



# wwPDB X-ray Structure Validation Summary Report ⓘ

Jun 15, 2020 – 08:28 am BST

PDB ID : 4WVD  
Title : Identification of a novel FXR ligand that regulates metabolism  
Authors : Wang, R.; Li, Y.  
Deposited on : 2014-11-05  
Resolution : 2.90 Å(reported)

This is a wwPDB X-ray Structure Validation Summary Report for a publicly released PDB entry.

We welcome your comments at [validation@mail.wwpdb.org](mailto:validation@mail.wwpdb.org)

A user guide is available at

<https://www.wwpdb.org/validation/2017/XrayValidationReportHelp>

with specific help available everywhere you see the ⓘ symbol.

---

The following versions of software and data (see [references ⓘ](#)) were used in the production of this report:

MolProbity	:	4.02b-467
Mogul	:	1.8.5 (274361), CSD as541be (2020)
Xtriage (Phenix)	:	1.13
EDS	:	2.11
buster-report	:	1.1.7 (2018)
Percentile statistics	:	20191225.v01 (using entries in the PDB archive December 25th 2019)
Refmac	:	5.8.0158
CCP4	:	7.0.044 (Gargrove)
Ideal geometry (proteins)	:	Engh & Huber (2001)
Ideal geometry (DNA, RNA)	:	Parkinson et al. (1996)
Validation Pipeline (wwPDB-VP)	:	2.11

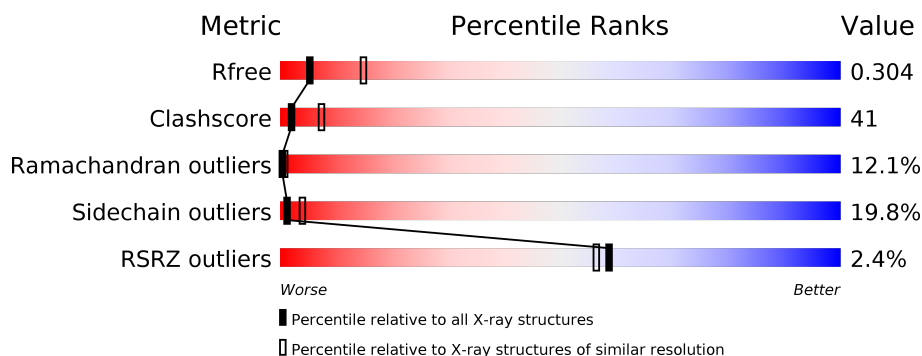
# 1 Overall quality at a glance ⓘ

The following experimental techniques were used to determine the structure:

## *X-RAY DIFFRACTION*

The reported resolution of this entry is 2.90 Å.

Percentile scores (ranging between 0-100) for global validation metrics of the entry are shown in the following graphic. The table shows the number of entries on which the scores are based.



Metric	Whole archive (#Entries)	Similar resolution (#Entries, resolution range(Å))
$R_{free}$	130704	1957 (2.90-2.90)
Clashscore	141614	2172 (2.90-2.90)
Ramachandran outliers	138981	2115 (2.90-2.90)
Sidechain outliers	138945	2117 (2.90-2.90)
RSRZ outliers	127900	1906 (2.90-2.90)

The table below summarises the geometric issues observed across the polymeric chains and their fit to the electron density. The red, orange, yellow and green segments on the lower bar indicate the fraction of residues that contain outliers for  $\geq 3$ , 2, 1 and 0 types of geometric quality criteria respectively. A grey segment represents the fraction of residues that are not modelled. The numeric value for each fraction is indicated below the corresponding segment, with a dot representing fractions  $\leq 5\%$ . The upper red bar (where present) indicates the fraction of residues that have poor fit to the electron density. The numeric value is given above the bar.

Mol	Chain	Length	Quality of chain
1	C	17	<div> <div>24%</div> <div>53%</div> <div>18%</div> <div>6%</div> </div>
1	D	17	<div> <div>76%</div> <div>24%</div> </div>
2	A	211	<div> <div>3%</div> <div>42%</div> <div>41%</div> <div>16%</div> <div>•</div> </div>
2	B	211	<div> <div>2%</div> <div>49%</div> <div>35%</div> <div>12%</div> <div>• •</div> </div>

The following table lists non-polymeric compounds, carbohydrate monomers and non-standard residues in protein, DNA, RNA chains that are outliers for geometric or electron-density-fit crite-

ria:

Mol	Type	Chain	Res	Chirality	Geometry	Clashes	Electron density
3	FMT	B	501	-	-	X	-
3	FMT	B	502	-	-	X	-
4	IVM	A	505	-	-	X	-
4	IVM	B	505	-	-	X	-

## 2 Entry composition [i](#)

There are 5 unique types of molecules in this entry. The entry contains 3643 atoms, of which 0 are hydrogens and 0 are deuteriums.

In the tables below, the ZeroOcc column contains the number of atoms modelled with zero occupancy, the AltConf column contains the number of residues with at least one atom in alternate conformation and the Trace column contains the number of residues modelled with at most 2 atoms.

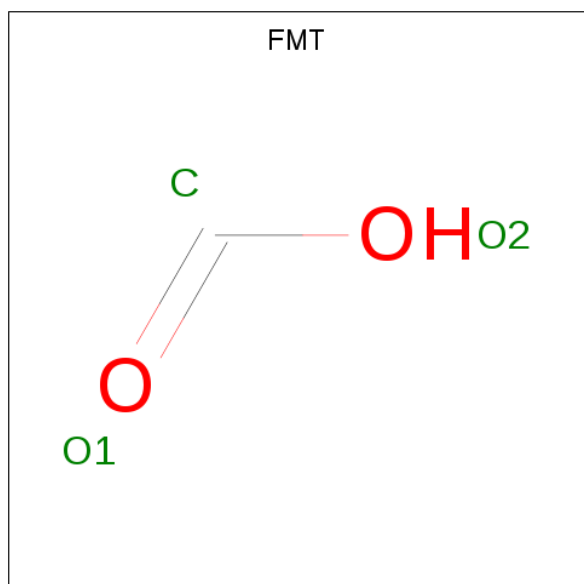
- Molecule 1 is a protein called Nuclear receptor corepressor 1.

Mol	Chain	Residues	Atoms					ZeroOcc	AltConf	Trace
1	C	16	Total	C	N	O	S	0	0	0
			115	74	20	20	1			
1	D	17	Total	C	N	O	S	0	0	0
			129	82	22	24	1			

- Molecule 2 is a protein called Bile acid receptor.

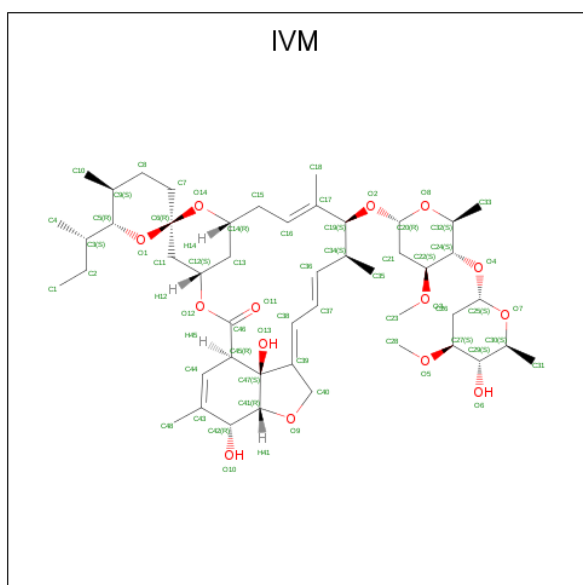
Mol	Chain	Residues	Atoms					ZeroOcc	AltConf	Trace
2	A	210	Total	C	N	O	S	0	0	0
			1653	1050	279	316	8			
2	B	208	Total	C	N	O	S	0	0	0
			1587	1006	268	304	9			

- Molecule 3 is FORMIC ACID (three-letter code: FMT) (formula: CH<sub>2</sub>O<sub>2</sub>).



Mol	Chain	Residues	Atoms	ZeroOcc	AltConf
3	A	1	Total C O 3 1 2	0	0
3	A	1	Total C O 3 1 2	0	0
3	A	1	Total C O 3 1 2	0	0
3	A	1	Total C O 3 1 2	0	0
3	B	1	Total C O 3 1 2	0	0
3	B	1	Total C O 3 1 2	0	0
3	B	1	Total C O 3 1 2	0	0
3	B	1	Total C O 3 1 2	0	0

- Molecule 4 is (2aE,4E,5'S,6S,6'R,7S,8E,11R,13R,15S,17aR,20R,20aR,20bS)-6'-[(2S)-butan-2-yl]-20,20b-dihydroxy-5',6,8,19-tetramethyl-17-oxo-3',4',5',6,6',10,11,14,15,17,17a,20,20a,20b-tetradecahydro-2H,7H-spiro[11,15-methanofuro[4,3,2-pq][2,6]benzodioxacyclooctadecine-13,2'-pyran]-7-yl 2,6-dideoxy-4-O-(2,6-dideoxy-3-O-methyl-alpha-L-arabino-hexopyranosyl)-3-O-methyl-alpha-L-arabino-hexopyranoside (three-letter code: IVM) (formula: C<sub>48</sub>H<sub>74</sub>O<sub>14</sub>).



Mol	Chain	Residues	Atoms	ZeroOcc	AltConf
4	A	1	Total C O 62 48 14	0	0
4	B	1	Total C O 62 48 14	0	0

- Molecule 5 is water.

Mol	Chain	Residues	Atoms		ZeroOcc	AltConf
5	A	5	Total 5	O 5	0	0
5	D	3	Total 3	O 3	0	0
5	B	3	Total 3	O 3	0	0

### 3 Residue-property plots [i](#)

These plots are drawn for all protein, RNA and DNA chains in the entry. The first graphic for a chain summarises the proportions of the various outlier classes displayed in the second graphic. The second graphic shows the sequence view annotated by issues in geometry and electron density. Residues are color-coded according to the number of geometric quality criteria for which they contain at least one outlier: green = 0, yellow = 1, orange = 2 and red = 3 or more. A red dot above a residue indicates a poor fit to the electron density ( $RSRZ > 2$ ). Stretches of 2 or more consecutive residues without any outlier are shown as a green connector. Residues present in the sample, but not in the model, are shown in grey.

#### • Molecule 1: Nuclear receptor corepressor 1

Chain C: 



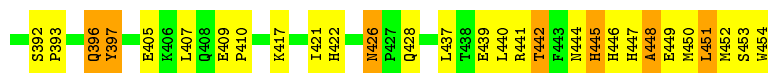
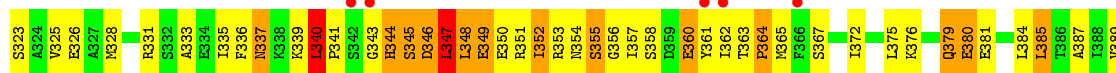
#### • Molecule 1: Nuclear receptor corepressor 1

Chain D: 



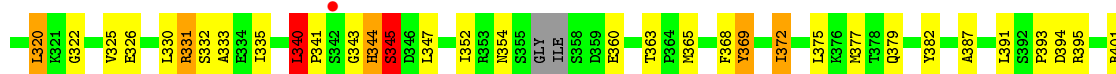
#### • Molecule 2: Bile acid receptor

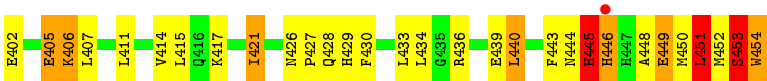
Chain A: 



#### • Molecule 2: Bile acid receptor

Chain B: 







## 4 Data and refinement statistics

Property	Value	Source
Space group	I 21 21 21	Depositor
Cell constants a, b, c, $\alpha$ , $\beta$ , $\gamma$	53.01Å 161.76Å 169.02Å 90.00° 90.00° 90.00°	Depositor
Resolution (Å)	50.00 – 2.90 38.61 – 2.90	Depositor EDS
% Data completeness (in resolution range)	98.3 (50.00-2.90) 98.4 (38.61-2.90)	Depositor EDS
$R_{merge}$	0.10	Depositor
$R_{sym}$	(Not available)	Depositor
$\langle I/\sigma(I) \rangle$ <sup>1</sup>	4.72 (at 2.90Å)	Xtriage
Refinement program	REFMAC 5.8.0073	Depositor
R, $R_{free}$	0.277 , 0.302 0.284 , 0.304	Depositor DCC
$R_{free}$ test set	819 reflections (5.01%)	wwPDB-VP
Wilson B-factor (Å <sup>2</sup> )	81.6	Xtriage
Anisotropy	0.165	Xtriage
Bulk solvent $k_{sol}$ (e/Å <sup>3</sup> ), $B_{sol}$ (Å <sup>2</sup> )	0.33 , 76.4	EDS
L-test for twinning <sup>2</sup>	$\langle  L  \rangle = 0.44$ , $\langle L^2 \rangle = 0.27$	Xtriage
Estimated twinning fraction	0.057 for -h,-l,-k	Xtriage
$F_o, F_c$ correlation	0.89	EDS
Total number of atoms	3643	wwPDB-VP
Average B, all atoms (Å <sup>2</sup> )	77.0	wwPDB-VP

Xtriage's analysis on translational NCS is as follows: *The largest off-origin peak in the Patterson function is 5.55% of the height of the origin peak. No significant pseudotranslation is detected.*

<sup>1</sup>Intensities estimated from amplitudes.

<sup>2</sup>Theoretical values of  $\langle |L| \rangle$ ,  $\langle L^2 \rangle$  for acentric reflections are 0.5, 0.333 respectively for untwinned datasets, and 0.375, 0.2 for perfectly twinned datasets.

## 5 Model quality [i](#)

### 5.1 Standard geometry [i](#)

Bond lengths and bond angles in the following residue types are not validated in this section: IVM, FMT

The Z score for a bond length (or angle) is the number of standard deviations the observed value is removed from the expected value. A bond length (or angle) with  $|Z| > 5$  is considered an outlier worth inspection. RMSZ is the root-mean-square of all Z scores of the bond lengths (or angles).

Mol	Chain	Bond lengths		Bond angles	
		RMSZ	$\# Z  > 5$	RMSZ	$\# Z  > 5$
1	C	0.65	0/115	0.86	0/153
1	D	0.49	0/129	0.80	0/170
2	A	0.59	0/1684	0.83	0/2280
2	B	0.57	0/1618	0.83	2/2198 (0.1%)
All	All	0.58	0/3546	0.83	2/4801 (0.0%)

Chiral center outliers are detected by calculating the chiral volume of a chiral center and verifying if the center is modelled as a planar moiety or with the opposite hand. A planarity outlier is detected by checking planarity of atoms in a peptide group, atoms in a mainchain group or atoms of a sidechain that are expected to be planar.

Mol	Chain	#Chirality outliers	#Planarity outliers
2	B	0	1

There are no bond length outliers.

All (2) bond angle outliers are listed below:

Mol	Chain	Res	Type	Atoms	Z	Observed( $^{\circ}$ )	Ideal( $^{\circ}$ )
2	B	340	LEU	CA-CB-CG	5.41	127.75	115.30
2	B	451	LEU	CA-CB-CG	5.01	126.81	115.30

There are no chirality outliers.

All (1) planarity outliers are listed below:

Mol	Chain	Res	Type	Group
2	B	453	SER	Peptide

## 5.2 Too-close contacts ⓘ

In the following table, the Non-H and H(model) columns list the number of non-hydrogen atoms and hydrogen atoms in the chain respectively. The H(added) column lists the number of hydrogen atoms added and optimized by MolProbity. The Clashes column lists the number of clashes within the asymmetric unit, whereas Symm-Clashes lists symmetry related clashes.

Mol	Chain	Non-H	H(model)	H(added)	Clashes	Symm-Clashes
1	C	115	0	115	12	0
1	D	129	0	135	1	0
2	A	1653	0	1593	110	0
2	B	1587	0	1464	89	0
3	A	12	0	4	0	0
3	B	12	0	4	2	1
4	A	62	0	74	37	0
4	B	62	0	74	62	0
5	A	5	0	0	0	0
5	B	3	0	0	0	0
5	D	3	0	0	0	0
All	All	3643	0	3463	289	1

The all-atom clashscore is defined as the number of clashes found per 1000 atoms (including hydrogen atoms). The all-atom clashscore for this structure is 41.

The worst 5 of 289 close contacts within the same asymmetric unit are listed below, sorted by their clash magnitude.

Atom-1	Atom-2	Interatomic distance (Å)	Clash overlap (Å)
4:A:505:IVM:C25	4:A:505:IVM:H23A	1.38	1.52
4:B:505:IVM:C21	4:B:505:IVM:H18	1.43	1.48
4:B:505:IVM:C20	4:B:505:IVM:H18	1.50	1.37
4:B:505:IVM:C1	4:B:505:IVM:H9	1.52	1.33
4:B:505:IVM:H10A	4:B:505:IVM:C14	1.61	1.29

All (1) symmetry-related close contacts are listed below. The label for Atom-2 includes the symmetry operator and encoded unit-cell translations to be applied.

Atom-1	Atom-2	Interatomic distance (Å)	Clash overlap (Å)
3:B:504:FMT:O2	3:B:504:FMT:O2[7_455]	1.63	0.57

## 5.3 Torsion angles [i](#)

### 5.3.1 Protein backbone [i](#)

In the following table, the Percentiles column shows the percent Ramachandran outliers of the chain as a percentile score with respect to all X-ray entries followed by that with respect to entries of similar resolution.

The Analysed column shows the number of residues for which the backbone conformation was analysed, and the total number of residues.

Mol	Chain	Analysed	Favoured	Allowed	Outliers	Percentiles	
1	C	14/17 (82%)	6 (43%)	5 (36%)	3 (21%)	0	0
1	D	15/17 (88%)	10 (67%)	5 (33%)	0	100	100
2	A	206/211 (98%)	151 (73%)	28 (14%)	27 (13%)	0	0
2	B	204/211 (97%)	152 (74%)	29 (14%)	23 (11%)	0	1
All	All	439/456 (96%)	319 (73%)	67 (15%)	53 (12%)	0	1

5 of 53 Ramachandran outliers are listed below:

Mol	Chain	Res	Type
1	C	2274	SER
2	A	312	ASP
2	A	336	PHE
2	A	345	SER
2	A	448	ALA

### 5.3.2 Protein sidechains [i](#)

In the following table, the Percentiles column shows the percent sidechain outliers of the chain as a percentile score with respect to all X-ray entries followed by that with respect to entries of similar resolution.

The Analysed column shows the number of residues for which the sidechain conformation was analysed, and the total number of residues.

Mol	Chain	Analysed	Rotameric	Outliers	Percentiles	
1	C	11/14 (79%)	8 (73%)	3 (27%)	0	1
1	D	14/14 (100%)	11 (79%)	3 (21%)	1	3
2	A	177/194 (91%)	145 (82%)	32 (18%)	1	5
2	B	161/194 (83%)	127 (79%)	34 (21%)	1	3
All	All	363/416 (87%)	291 (80%)	72 (20%)	1	4

5 of 72 residues with a non-rotameric sidechain are listed below:

Mol	Chain	Res	Type
2	A	442	THR
2	B	271	ASN
2	B	446	HIS
2	A	445	HIS
1	D	2261	LEU

Some sidechains can be flipped to improve hydrogen bonding and reduce clashes. 5 of 17 such sidechains are listed below:

Mol	Chain	Res	Type
2	A	426	ASN
2	A	428	GLN
2	B	293	ASN
2	A	423	GLN
2	B	422	HIS

### 5.3.3 RNA ⓘ

There are no RNA molecules in this entry.

## 5.4 Non-standard residues in protein, DNA, RNA chains ⓘ

There are no non-standard protein/DNA/RNA residues in this entry.

## 5.5 Carbohydrates ⓘ

There are no carbohydrates in this entry.

## 5.6 Ligand geometry ⓘ

10 ligands are modelled in this entry.

In the following table, the Counts columns list the number of bonds (or angles) for which Mogul statistics could be retrieved, the number of bonds (or angles) that are observed in the model and the number of bonds (or angles) that are defined in the Chemical Component Dictionary. The Link column lists molecule types, if any, to which the group is linked. The Z score for a bond length (or angle) is the number of standard deviations the observed value is removed from the expected value. A bond length (or angle) with  $|Z| > 2$  is considered an outlier worth inspection. RMSZ is the root-mean-square of all Z scores of the bond lengths (or angles).

Mol	Type	Chain	Res	Link	Bond lengths			Bond angles		
					Counts	RMSZ	# Z  > 2	Counts	RMSZ	# Z  > 2
3	FMT	A	503	-	0,2,2	0.00	-	0,1,1	0.00	-
3	FMT	B	503	-	0,2,2	0.00	-	0,1,1	0.00	-
3	FMT	B	504	-	0,2,2	0.00	-	0,1,1	0.00	-
3	FMT	A	501	-	0,2,2	0.00	-	0,1,1	0.00	-
4	IVM	A	505	-	65,68,68	3.38	27 (41%)	82,102,102	2.16	32 (39%)
3	FMT	A	502	-	0,2,2	0.00	-	0,1,1	0.00	-
3	FMT	B	502	-	0,2,2	0.00	-	0,1,1	0.00	-
3	FMT	B	501	-	0,2,2	0.00	-	0,1,1	0.00	-
4	IVM	B	505	-	65,68,68	3.18	28 (43%)	82,102,102	2.04	24 (29%)
3	FMT	A	504	-	0,2,2	0.00	-	0,1,1	0.00	-

In the following table, the Chirals column lists the number of chiral outliers, the number of chiral centers analysed, the number of these observed in the model and the number defined in the Chemical Component Dictionary. Similar counts are reported in the Torsion and Rings columns. '-' means no outliers of that kind were identified.

Mol	Type	Chain	Res	Link	Chirals	Torsions	Rings
4	IVM	A	505	-	-	7/45/141/141	1/6/7/7
4	IVM	B	505	-	-	24/45/141/141	1/6/7/7

The worst 5 of 55 bond length outliers are listed below:

Mol	Chain	Res	Type	Atoms	Z	Observed(Å)	Ideal(Å)
4	A	505	IVM	C45-C44	-11.47	1.37	1.51
4	B	505	IVM	C45-C44	-11.43	1.37	1.51
4	A	505	IVM	C45-C46	-9.49	1.37	1.52
4	B	505	IVM	C19-C17	-7.78	1.37	1.51
4	A	505	IVM	C19-C17	-7.65	1.38	1.51

The worst 5 of 56 bond angle outliers are listed below:

Mol	Chain	Res	Type	Atoms	Z	Observed(°)	Ideal(°)
4	B	505	IVM	C3-C5-C9	-6.53	104.82	116.50
4	A	505	IVM	C3-C5-C9	-5.77	106.19	116.50
4	B	505	IVM	C6-O14-C14	-4.78	105.59	114.49
4	A	505	IVM	C2-C3-C5	-4.61	105.40	111.86
4	B	505	IVM	C6-C11-C12	-4.50	104.41	111.54

There are no chirality outliers.

5 of 31 torsion outliers are listed below:

Mol	Chain	Res	Type	Atoms
4	A	505	IVM	C1-C2-C3-C5
4	A	505	IVM	C4-C3-C5-C9
4	A	505	IVM	C29-C27-O5-C28
4	B	505	IVM	C21-C20-O2-C19
4	B	505	IVM	C2-C3-C5-O1

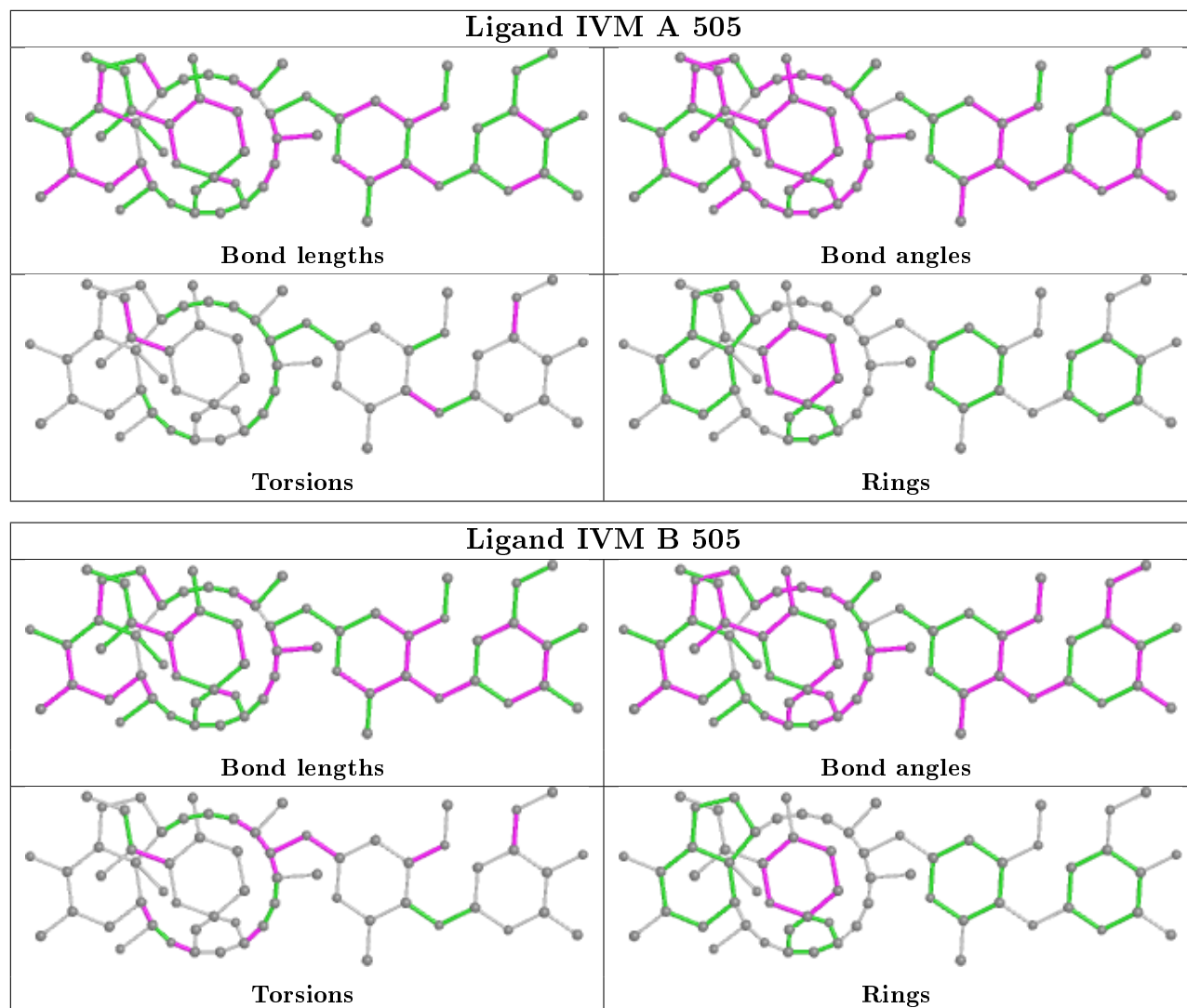
All (2) ring outliers are listed below:

Mol	Chain	Res	Type	Atoms
4	B	505	IVM	C5-C6-C7-C8-C9-O1
4	A	505	IVM	C5-C6-C7-C8-C9-O1

5 monomers are involved in 102 short contacts:

Mol	Chain	Res	Type	Clashes	Symm-Clashes
3	B	504	FMT	0	1
4	A	505	IVM	37	0
3	B	502	FMT	2	0
3	B	501	FMT	2	0
4	B	505	IVM	62	0

The following is a two-dimensional graphical depiction of Mogul quality analysis of bond lengths, bond angles, torsion angles, and ring geometry for all instances of the Ligand of Interest. In addition, ligands with molecular weight > 250 and outliers as shown on the validation Tables will also be included. For torsion angles, if less than 5% of the Mogul distribution of torsion angles is within 10 degrees of the torsion angle in question, then that torsion angle is considered an outlier. Any bond that is central to one or more torsion angles identified as an outlier by Mogul will be highlighted in the graph. For rings, the root-mean-square deviation (RMSD) between the ring in question and similar rings identified by Mogul is calculated over all ring torsion angles. If the average RMSD is greater than 60 degrees and the minimal RMSD between the ring in question and any Mogul-identified rings is also greater than 60 degrees, then that ring is considered an outlier. The outliers are highlighted in purple. The color gray indicates Mogul did not find sufficient equivalents in the CSD to analyse the geometry.



## 5.7 Other polymers [i](#)

There are no such residues in this entry.

## 5.8 Polymer linkage issues [i](#)

There are no chain breaks in this entry.



## 6 Fit of model and data [i](#)

### 6.1 Protein, DNA and RNA chains [i](#)

In the following table, the column labelled ‘#RSRZ> 2’ contains the number (and percentage) of RSRZ outliers, followed by percent RSRZ outliers for the chain as percentile scores relative to all X-ray entries and entries of similar resolution. The OWAB column contains the minimum, median, 95<sup>th</sup> percentile and maximum values of the occupancy-weighted average B-factor per residue. The column labelled ‘Q< 0.9’ lists the number of (and percentage) of residues with an average occupancy less than 0.9.

Mol	Chain	Analysed	<RSRZ>	#RSRZ>2		OWAB(Å²)	Q<0.9	
1	C	16/17 (94%)	0.29	0	100	100	58, 81, 125, 136	0
1	D	17/17 (100%)	0.29	0	100	100	65, 79, 118, 126	0
2	A	210/211 (99%)	0.16	7 (3%)	46	41	43, 74, 128, 158	0
2	B	208/211 (98%)	0.02	4 (1%)	66	65	45, 76, 122, 140	0
All	All	451/456 (98%)	0.11	11 (2%)	59	56	43, 76, 125, 158	0

The worst 5 of 11 RSRZ outliers are listed below:

Mol	Chain	Res	Type	RSRZ
2	A	278	PHE	3.2
2	B	342	SER	2.9
2	A	342	SER	2.9
2	A	366	PHE	2.8
2	A	362	ILE	2.8

### 6.2 Non-standard residues in protein, DNA, RNA chains [i](#)

There are no non-standard protein/DNA/RNA residues in this entry.

### 6.3 Carbohydrates [i](#)

There are no carbohydrates in this entry.

### 6.4 Ligands [i](#)

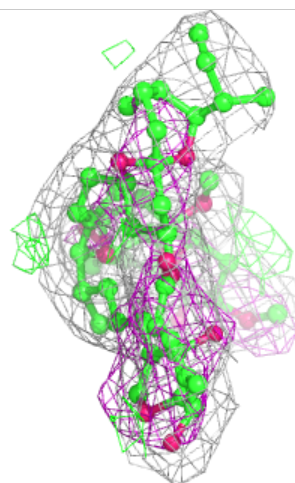
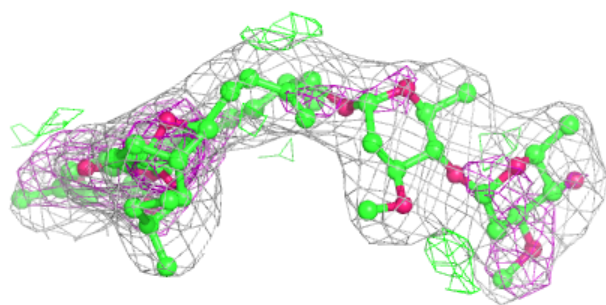
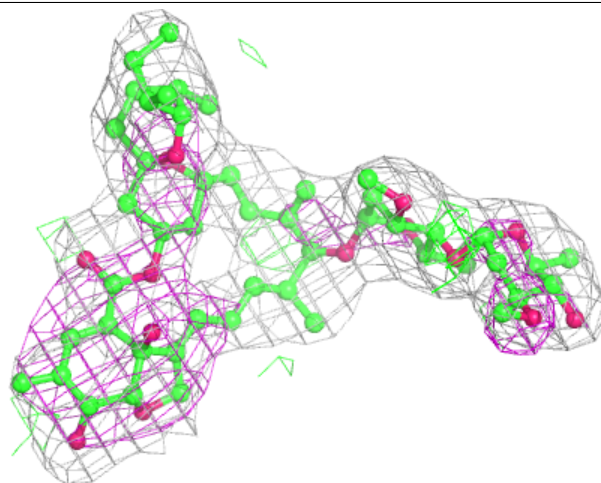
In the following table, the Atoms column lists the number of modelled atoms in the group and the number defined in the chemical component dictionary. The B-factors column lists the minimum, median, 95<sup>th</sup> percentile and maximum values of B factors of atoms in the group. The column labelled ‘Q< 0.9’ lists the number of atoms with occupancy less than 0.9.

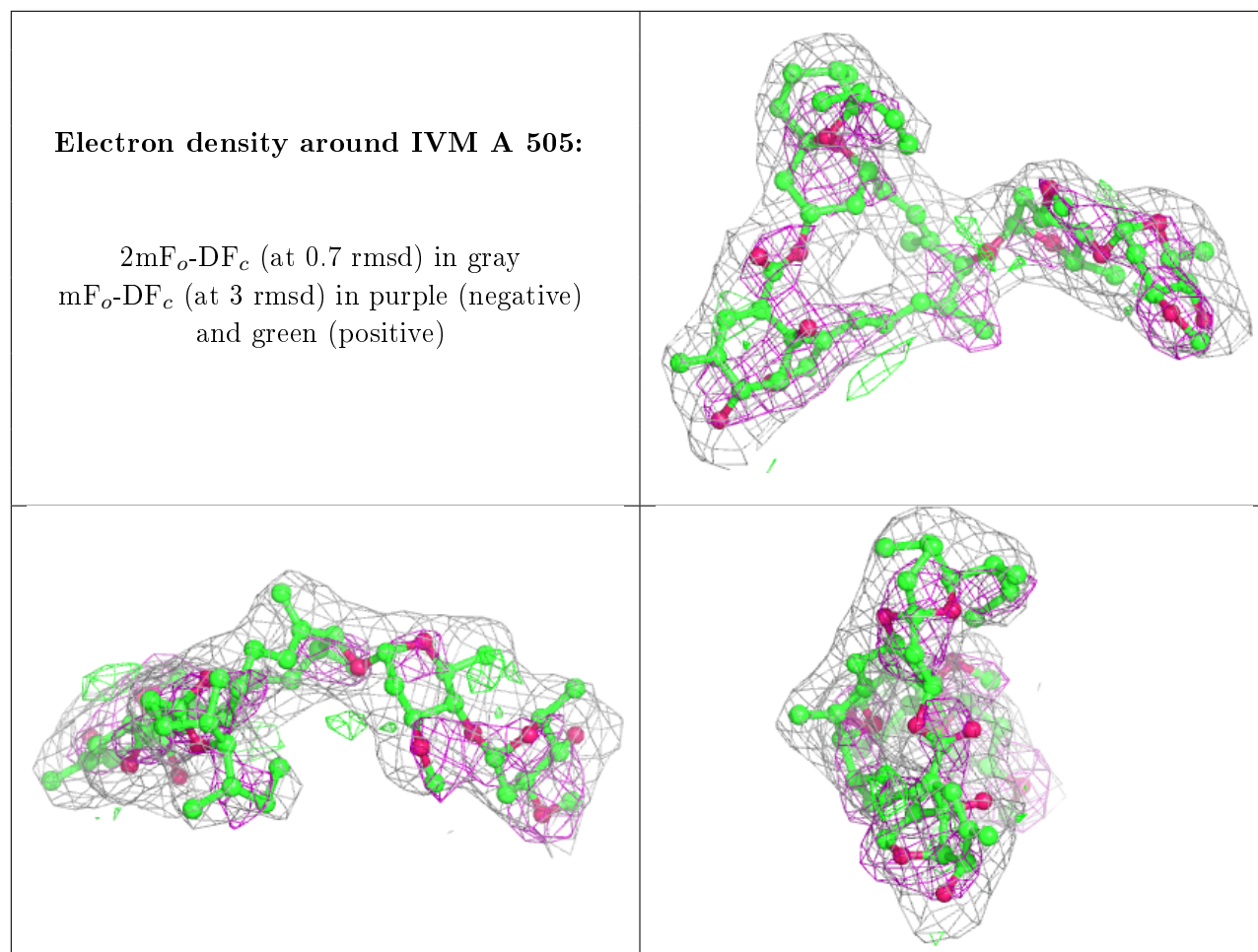
Mol	Type	Chain	Res	Atoms	RSCC	RSR	B-factors( $\text{\AA}^2$ )	Q<0.9
3	FMT	B	503	3/3	0.79	0.33	69,69,74,79	0
3	FMT	A	503	3/3	0.85	0.30	89,89,91,100	0
3	FMT	A	501	3/3	0.87	0.26	55,55,66,67	0
3	FMT	B	502	3/3	0.92	0.33	52,52,54,54	0
4	IVM	B	505	62/62	0.92	0.20	20,20,20,20	0
3	FMT	B	504	3/3	0.93	0.23	7,7,103,122	1
4	IVM	A	505	62/62	0.94	0.19	20,20,20,20	0
3	FMT	B	501	3/3	0.94	0.29	55,55,61,68	0
3	FMT	A	502	3/3	0.94	0.27	68,68,73,74	0
3	FMT	A	504	3/3	0.96	0.33	62,62,70,74	0

The following is a graphical depiction of the model fit to experimental electron density of all instances of the Ligand of Interest. In addition, ligands with molecular weight > 250 and outliers as shown on the geometry validation Tables will also be included. Each fit is shown from different orientation to approximate a three-dimensional view.

**Electron density around IVM B 505:**

2mF<sub>o</sub>-DF<sub>c</sub> (at 0.7 rmsd) in gray  
mF<sub>o</sub>-DF<sub>c</sub> (at 3 rmsd) in purple (negative)  
and green (positive)





## 6.5 Other polymers ⓘ

There are no such residues in this entry.