



Full wwPDB X-ray Structure Validation Report ⓘ

Aug 8, 2020 – 10:49 PM BST

PDB ID : 3WXP
Title : Structure of hyperthermophilic family 12 endocellulase (E197A) from *Pyrococcus furiosus* in complex with cellobiose
Authors : Kataoka, M.; Ishikawa, K.
Deposited on : 2014-08-04
Resolution : 1.42 Å(reported)

This is a Full wwPDB X-ray Structure Validation Report for a publicly released PDB entry.

We welcome your comments at validation@mail.wwpdb.org

A user guide is available at

<https://www.wwpdb.org/validation/2017/XrayValidationReportHelp>

with specific help available everywhere you see the ⓘ symbol.

The following versions of software and data (see [references ⓘ](#)) were used in the production of this report:

MolProbity : 4.02b-467
Mogul : 1.8.5 (274361), CSD as541be (2020)
Xtriage (Phenix) : 1.13
EDS : 2.13.1
Percentile statistics : 20191225.v01 (using entries in the PDB archive December 25th 2019)
Refmac : 5.8.0158
CCP4 : 7.0.044 (Gargrove)
Ideal geometry (proteins) : Engh & Huber (2001)
Ideal geometry (DNA, RNA) : Parkinson et al. (1996)
Validation Pipeline (wwPDB-VP) : 2.13.1

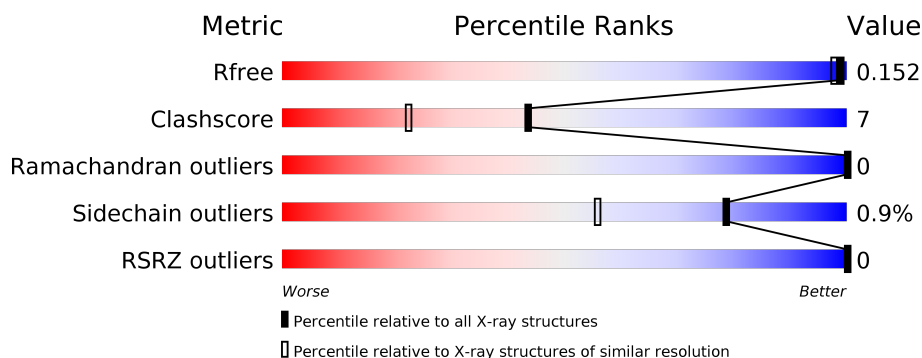
1 Overall quality at a glance

The following experimental techniques were used to determine the structure:

X-RAY DIFFRACTION

The reported resolution of this entry is 1.42 Å.

Percentile scores (ranging between 0-100) for global validation metrics of the entry are shown in the following graphic. The table shows the number of entries on which the scores are based.



Metric	Whole archive (#Entries)	Similar resolution (#Entries, resolution range(Å))
R_{free}	130704	2579 (1.44-1.40)
Clashscore	141614	2696 (1.44-1.40)
Ramachandran outliers	138981	2632 (1.44-1.40)
Sidechain outliers	138945	2631 (1.44-1.40)
RSRZ outliers	127900	2528 (1.44-1.40)

The table below summarises the geometric issues observed across the polymeric chains and their fit to the electron density. The red, orange, yellow and green segments on the lower bar indicate the fraction of residues that contain outliers for ≥ 3 , 2, 1 and 0 types of geometric quality criteria respectively. A grey segment represents the fraction of residues that are not modelled. The numeric value for each fraction is indicated below the corresponding segment, with a dot representing fractions $\leq 5\%$. The upper red bar (where present) indicates the fraction of residues that have poor fit to the electron density. The numeric value is given above the bar.

Mol	Chain	Length	Quality of chain
1	A	319	 76% 8% 15%
2	B	2	 100%
2	C	2	 100%

The following table lists non-polymeric compounds, carbohydrate monomers and non-standard residues in protein, DNA, RNA chains that are outliers for geometric or electron-density-fit criteria:

Mol	Type	Chain	Res	Chirality	Geometry	Clashes	Electron density
4	NHE	A	403	-	-	X	-

2 Entry composition [i](#)

There are 5 unique types of molecules in this entry. The entry contains 2729 atoms, of which 0 are hydrogens and 0 are deuteriums.

In the tables below, the ZeroOcc column contains the number of atoms modelled with zero occupancy, the AltConf column contains the number of residues with at least one atom in alternate conformation and the Trace column contains the number of residues modelled with at most 2 atoms.

- Molecule 1 is a protein called Endoglucanase A.

Mol	Chain	Residues	Atoms					ZeroOcc	AltConf	Trace
1	A	270	Total	C	N	O	S	0	11	0
			2244	1454	363	425	2			

There is a discrepancy between the modelled and reference sequences:

Chain	Residue	Modelled	Actual	Comment	Reference
A	197	ALA	GLU	engineered mutation	UNP Q9V2T0

- Molecule 2 is an oligosaccharide called beta-D-glucopyranose-(1-4)-beta-D-glucopyranose.

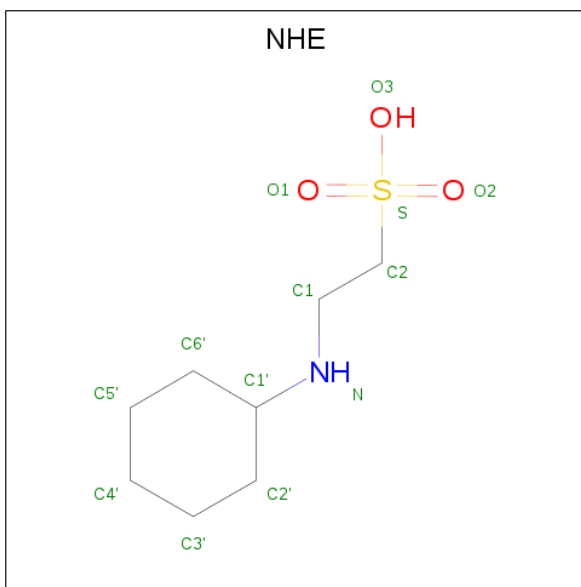


Mol	Chain	Residues	Atoms			ZeroOcc	AltConf	Trace
2	B	2	Total	C	O	0	0	0
			23	12	11			
2	C	2	Total	C	O	0	0	0
			23	12	11			

- Molecule 3 is CALCIUM ION (three-letter code: CA) (formula: Ca).

Mol	Chain	Residues	Atoms		ZeroOcc	AltConf
3	A	2	Total	Ca	0	0
			2	2		

- Molecule 4 is 2-[N-CYCLOHEXYLAMINO]ETHANE SULFONIC ACID (three-letter code: NHE) (formula: C₈H₁₇NO₃S).

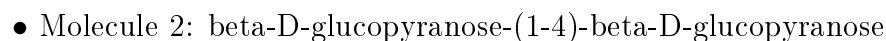
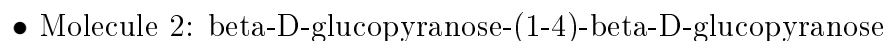


Mol	Chain	Residues	Atoms					ZeroOcc	AltConf
4	A	1	Total	C	N	O	S	0	0
			13	8	1	3	1		
4	A	1	Total	C	N	O	S	0	0
			13	8	1	3	1		
4	A	1	Total	C	N	O	S	0	0
			13	8	1	3	1		

- Molecule 5 is water.

Mol	Chain	Residues	Atoms		ZeroOcc	AltConf
5	A	391	Total	O	0	7
			398	398		

- Molecule 1: Endoglucanase A



4 Data and refinement statistics

Property	Value	Source
Space group	P 2 ₁ 2 ₁ 2	Depositor
Cell constants a, b, c, α , β , γ	58.74 Å 119.28 Å 46.79 Å 90.00° 90.00° 90.00°	Depositor
Resolution (Å)	46.84 – 1.42 46.79 – 1.42	Depositor EDS
% Data completeness (in resolution range)	99.7 (46.84-1.42) 99.7 (46.79-1.42)	Depositor EDS
R_{merge}	0.06	Depositor
R_{sym}	(Not available)	Depositor
$\langle I/\sigma(I) \rangle$ ¹	3.46 (at 1.42 Å)	Xtriage
Refinement program	REFMAC 5.7.0029	Depositor
R, R_{free}	0.112 , 0.152 0.110 , 0.152	Depositor DCC
R_{free} test set	3157 reflections (5.06%)	wwPDB-VP
Wilson B-factor (Å ²)	12.3	Xtriage
Anisotropy	0.815	Xtriage
Bulk solvent k_{sol} (e/Å ³), B_{sol} (Å ²)	0.34 , 46.9	EDS
L-test for twinning ²	$\langle L \rangle = 0.49$, $\langle L^2 \rangle = 0.32$	Xtriage
Estimated twinning fraction	No twinning to report.	Xtriage
F_o, F_c correlation	0.98	EDS
Total number of atoms	2729	wwPDB-VP
Average B, all atoms (Å ²)	18.0	wwPDB-VP

Xtriage's analysis on translational NCS is as follows: *The largest off-origin peak in the Patterson function is 6.09% of the height of the origin peak. No significant pseudotranslation is detected.*

¹Intensities estimated from amplitudes.

²Theoretical values of $\langle |L| \rangle$, $\langle L^2 \rangle$ for acentric reflections are 0.5, 0.333 respectively for untwinned datasets, and 0.375, 0.2 for perfectly twinned datasets.

5 Model quality ⓘ

5.1 Standard geometry ⓘ

Bond lengths and bond angles in the following residue types are not validated in this section: NHE, CA, BGC

The Z score for a bond length (or angle) is the number of standard deviations the observed value is removed from the expected value. A bond length (or angle) with $|Z| > 5$ is considered an outlier worth inspection. RMSZ is the root-mean-square of all Z scores of the bond lengths (or angles).

Mol	Chain	Bond lengths		Bond angles	
		RMSZ	$\# Z > 5$	RMSZ	$\# Z > 5$
1	A	1.11	2/2312 (0.1%)	1.01	3/3172 (0.1%)

All (2) bond length outliers are listed below:

Mol	Chain	Res	Type	Atoms	Z	Observed(Å)	Ideal(Å)
1	A	184	GLU	CD-OE1	5.43	1.31	1.25
1	A	246	PHE	CG-CD1	5.06	1.46	1.38

All (3) bond angle outliers are listed below:

Mol	Chain	Res	Type	Atoms	Z	Observed(°)	Ideal(°)
1	A	164	LYS	CD-CE-NZ	8.63	131.56	111.70
1	A	284	ASP	CB-CG-OD1	5.92	123.63	118.30
1	A	55	ARG	NE-CZ-NH2	-5.67	117.46	120.30

There are no chirality outliers.

There are no planarity outliers.

5.2 Too-close contacts ⓘ

In the following table, the Non-H and H(model) columns list the number of non-hydrogen atoms and hydrogen atoms in the chain respectively. The H(added) column lists the number of hydrogen atoms added and optimized by MolProbity. The Clashes column lists the number of clashes within the asymmetric unit, whereas Symm-Clashes lists symmetry related clashes.

Mol	Chain	Non-H	H(model)	H(added)	Clashes	Symm-Clashes
1	A	2244	0	2176	28	0
2	B	23	0	21	0	0
2	C	23	0	21	0	0

Continued on next page...

Continued from previous page...

Mol	Chain	Non-H	H(model)	H(added)	Clashes	Symm-Clashes
3	A	2	0	0	0	0
4	A	39	0	50	7	0
5	A	398	0	0	7	0
All	All	2729	0	2268	31	0

The all-atom clashscore is defined as the number of clashes found per 1000 atoms (including hydrogen atoms). The all-atom clashscore for this structure is 7.

All (31) close contacts within the same asymmetric unit are listed below, sorted by their clash magnitude.

Atom-1	Atom-2	Interatomic distance (Å)	Clash overlap (Å)
1:A:97:TYR:OH	1:A:102[B]:GLY:HA2	1.68	0.93
1:A:307[B]:ASN:OD1	4:A:403:NHE:HC22	1.69	0.92
1:A:118[A]:ARG:NH2	5:A:800:HOH:O	2.04	0.86
1:A:307[A]:ASN:OD1	5:A:861:HOH:O	2.00	0.79
1:A:97:TYR:CZ	1:A:102[B]:GLY:HA2	2.20	0.75
1:A:118[B]:ARG:NH2	5:A:724:HOH:O	2.27	0.67
1:A:69:LYS:NZ	5:A:707:HOH:O	2.27	0.67
1:A:97:TYR:HE1	1:A:102[B]:GLY:C	1.98	0.66
1:A:307[B]:ASN:OD1	4:A:403:NHE:C2	2.46	0.62
1:A:97:TYR:CE1	1:A:102[B]:GLY:C	2.76	0.58
4:A:403:NHE:HC'1	5:A:717:HOH:O	2.04	0.58
1:A:102[B]:GLY:HA3	5:A:717:HOH:O	2.05	0.56
1:A:97:TYR:CE1	1:A:102[B]:GLY:HA2	2.44	0.53
1:A:50:LYS:N	5:A:865:HOH:O	2.43	0.52
1:A:97:TYR:OH	1:A:102[B]:GLY:CA	2.51	0.49
1:A:97:TYR:HE1	1:A:102[B]:GLY:O	1.96	0.48
1:A:81:ILE:HG22	1:A:83:LEU:HG	1.96	0.47
1:A:307[B]:ASN:OD1	4:A:403:NHE:S	2.72	0.47
1:A:265:ILE:HG22	1:A:318:ILE:HD11	1.99	0.45
1:A:53:LYS:HE2	1:A:53:LYS:HB2	1.42	0.43
1:A:180:TRP:CZ3	1:A:197:ALA:HB2	2.54	0.43
1:A:181:LEU:HA	1:A:281:TYR:O	2.19	0.42
1:A:51:VAL:CG1	1:A:96[B]:THR:CG2	2.98	0.42
1:A:51:VAL:CG1	1:A:96[B]:THR:HG23	2.49	0.42
1:A:97:TYR:CE1	4:A:403:NHE:H4'2	2.55	0.42
1:A:103[B]:VAL:HG22	1:A:306:THR:HG22	2.02	0.41
1:A:211:GLY:HA3	1:A:237:ALA:HB2	2.03	0.41
1:A:97:TYR:CE1	1:A:102[B]:GLY:CA	3.04	0.41
1:A:164:LYS:HE3	1:A:166:GLU:OE2	2.20	0.40

There are no symmetry-related clashes.

5.3 Torsion angles

5.3.1 Protein backbone

In the following table, the Percentiles column shows the percent Ramachandran outliers of the chain as a percentile score with respect to all X-ray entries followed by that with respect to entries of similar resolution.

The Analysed column shows the number of residues for which the backbone conformation was analysed, and the total number of residues.

Mol	Chain	Analysed	Favoured	Allowed	Outliers	Percentiles	
1	A	279/319 (88%)	271 (97%)	8 (3%)	0	100	100

There are no Ramachandran outliers to report.

5.3.2 Protein sidechains

In the following table, the Percentiles column shows the percent sidechain outliers of the chain as a percentile score with respect to all X-ray entries followed by that with respect to entries of similar resolution.

The Analysed column shows the number of residues for which the sidechain conformation was analysed, and the total number of residues.

Mol	Chain	Analysed	Rotameric	Outliers	Percentiles	
1	A	245/283 (87%)	243 (99%)	2 (1%)	81	61

All (2) residues with a non-rotameric sidechain are listed below:

Mol	Chain	Res	Type
1	A	50	LYS
1	A	58	ASP

Some sidechains can be flipped to improve hydrogen bonding and reduce clashes. All (1) such sidechains are listed below:

Mol	Chain	Res	Type
1	A	169	ASN

5.3.3 RNA ⓘ

There are no RNA molecules in this entry.

5.4 Non-standard residues in protein, DNA, RNA chains ⓘ

There are no non-standard protein/DNA/RNA residues in this entry.

5.5 Carbohydrates ⓘ

4 monosaccharides are modelled in this entry.

In the following table, the Counts columns list the number of bonds (or angles) for which Mogul statistics could be retrieved, the number of bonds (or angles) that are observed in the model and the number of bonds (or angles) that are defined in the Chemical Component Dictionary. The Link column lists molecule types, if any, to which the group is linked. The Z score for a bond length (or angle) is the number of standard deviations the observed value is removed from the expected value. A bond length (or angle) with $|Z| > 2$ is considered an outlier worth inspection. RMSZ is the root-mean-square of all Z scores of the bond lengths (or angles).

Mol	Type	Chain	Res	Link	Bond lengths			Bond angles		
					Counts	RMSZ	# Z > 2	Counts	RMSZ	# Z > 2
2	BGC	B	1	2	12,12,12	0.76	0	17,17,17	1.58	4 (23%)
2	BGC	B	2	2	11,11,12	0.67	0	15,15,17	1.11	1 (6%)
2	BGC	C	1	2	12,12,12	0.89	1 (8%)	17,17,17	2.09	6 (35%)
2	BGC	C	2	2	11,11,12	0.61	0	15,15,17	1.38	3 (20%)

In the following table, the Chirals column lists the number of chiral outliers, the number of chiral centers analysed, the number of these observed in the model and the number defined in the Chemical Component Dictionary. Similar counts are reported in the Torsion and Rings columns. '-' means no outliers of that kind were identified.

Mol	Type	Chain	Res	Link	Chirals	Torsions	Rings
2	BGC	B	1	2	-	0/2/22/22	0/1/1/1
2	BGC	B	2	2	-	0/2/19/22	0/1/1/1
2	BGC	C	1	2	-	0/2/22/22	0/1/1/1
2	BGC	C	2	2	-	0/2/19/22	0/1/1/1

All (1) bond length outliers are listed below:

Mol	Chain	Res	Type	Atoms	Z	Observed(Å)	Ideal(Å)
2	C	1	BGC	O5-C1	2.03	1.48	1.42

All (14) bond angle outliers are listed below:

Mol	Chain	Res	Type	Atoms	Z	Observed(°)	Ideal(°)
2	C	1	BGC	O5-C1-C2	-5.16	101.07	110.28
2	C	1	BGC	C1-O5-C5	-3.84	106.42	113.66
2	B	1	BGC	C1-C2-C3	-2.96	104.18	110.31
2	C	2	BGC	O5-C1-C2	-2.91	106.28	110.77
2	C	1	BGC	C1-C2-C3	-2.79	104.53	110.31
2	C	1	BGC	O2-C2-C1	2.71	115.44	109.16
2	C	1	BGC	O1-C1-O5	2.52	117.94	110.38
2	C	1	BGC	O3-C3-C4	-2.38	104.84	110.35
2	B	1	BGC	O5-C5-C4	-2.30	105.52	109.69
2	B	2	BGC	O5-C1-C2	-2.30	107.22	110.77
2	B	1	BGC	O2-C2-C1	2.22	114.30	109.16
2	B	1	BGC	C1-O5-C5	-2.19	109.53	113.66
2	C	2	BGC	O2-C2-C3	-2.08	105.97	110.14
2	C	2	BGC	O6-C6-C5	-2.02	104.36	111.29

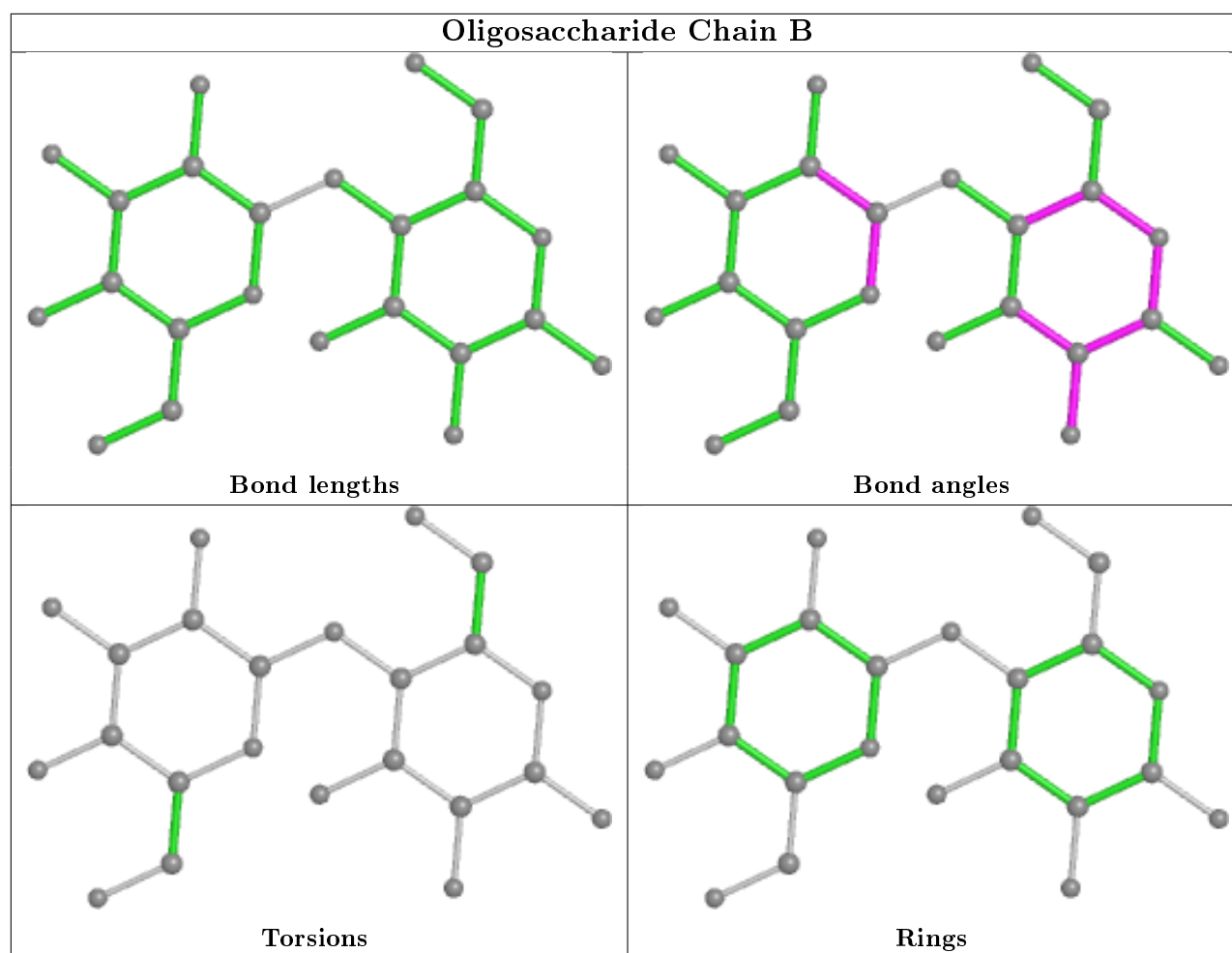
There are no chirality outliers.

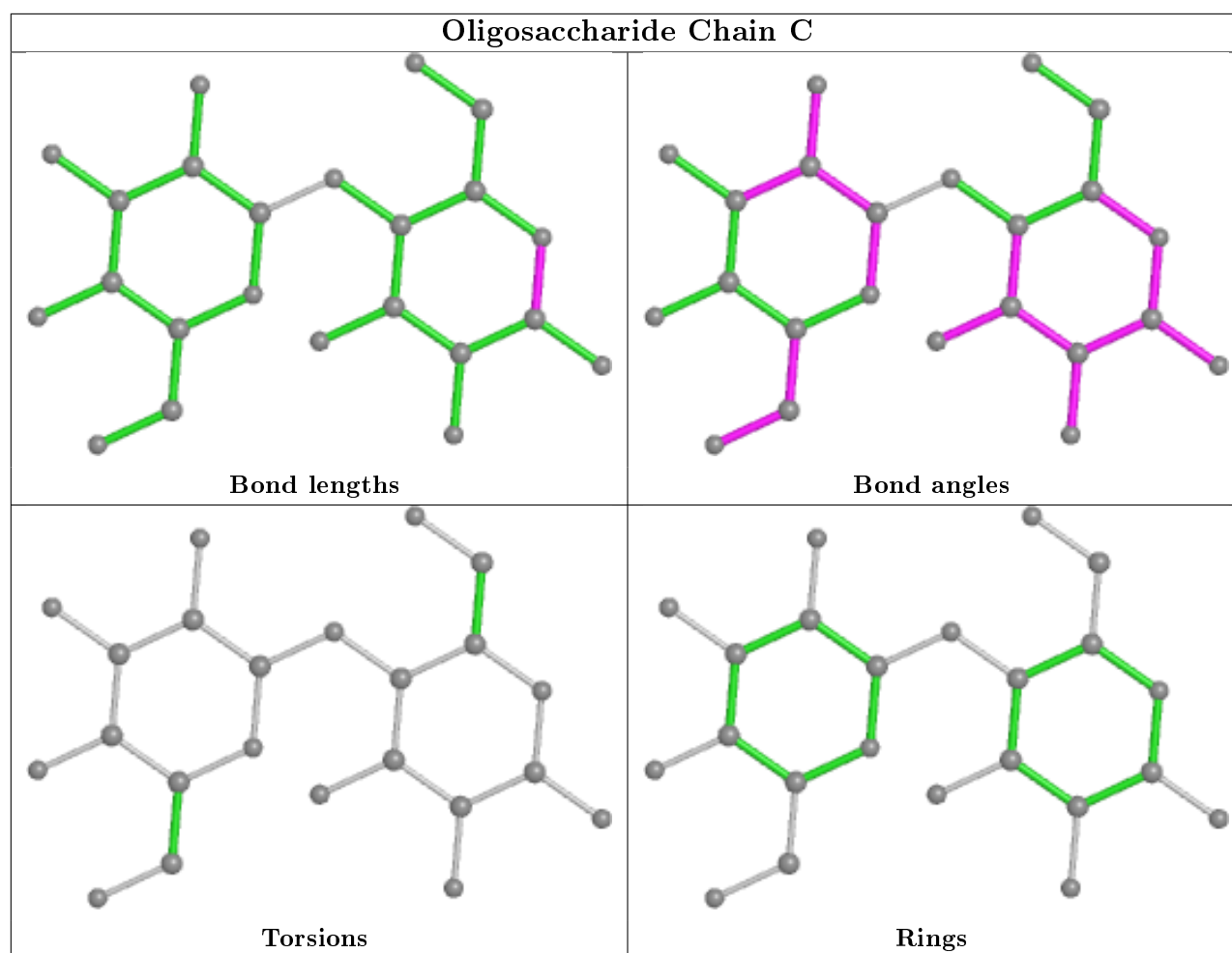
There are no torsion outliers.

There are no ring outliers.

No monomer is involved in short contacts.

The following is a two-dimensional graphical depiction of Mogul quality analysis of bond lengths, bond angles, torsion angles, and ring geometry for oligosaccharide.





5.6 Ligand geometry [i](#)

Of 5 ligands modelled in this entry, 2 are monoatomic - leaving 3 for Mogul analysis.

In the following table, the Counts columns list the number of bonds (or angles) for which Mogul statistics could be retrieved, the number of bonds (or angles) that are observed in the model and the number of bonds (or angles) that are defined in the Chemical Component Dictionary. The Link column lists molecule types, if any, to which the group is linked. The Z score for a bond length (or angle) is the number of standard deviations the observed value is removed from the expected value. A bond length (or angle) with $|Z| > 2$ is considered an outlier worth inspection. RMSZ is the root-mean-square of all Z scores of the bond lengths (or angles).

Mol	Type	Chain	Res	Link	Bond lengths			Bond angles		
					Counts	RMSZ	$\# Z > 2$	Counts	RMSZ	$\# Z > 2$
4	NHE	A	405	-	13,13,13	3.17	3 (23%)	16,17,17	3.21	10 (62%)
4	NHE	A	403	-	13,13,13	2.12	2 (15%)	16,17,17	3.14	7 (43%)
4	NHE	A	404	-	13,13,13	1.81	4 (30%)	16,17,17	2.52	7 (43%)

In the following table, the Chirals column lists the number of chiral outliers, the number of chiral

centers analysed, the number of these observed in the model and the number defined in the Chemical Component Dictionary. Similar counts are reported in the Torsion and Rings columns. '-' means no outliers of that kind were identified.

Mol	Type	Chain	Res	Link	Chirals	Torsions	Rings
4	NHE	A	405	-	-	1/7/15/15	0/1/1/1
4	NHE	A	403	-	-	2/7/15/15	0/1/1/1
4	NHE	A	404	-	-	1/7/15/15	0/1/1/1

All (9) bond length outliers are listed below:

Mol	Chain	Res	Type	Atoms	Z	Observed(Å)	Ideal(Å)
4	A	405	NHE	C2-S	-10.00	1.63	1.77
4	A	403	NHE	O3-S	5.53	1.67	1.47
4	A	403	NHE	C2-S	-4.62	1.70	1.77
4	A	404	NHE	C2-S	-4.61	1.71	1.77
4	A	405	NHE	O3-S	4.04	1.61	1.47
4	A	405	NHE	C6'-C1'	-2.72	1.45	1.52
4	A	404	NHE	O3-S	2.72	1.57	1.47
4	A	404	NHE	O2-S	-2.52	1.37	1.45
4	A	404	NHE	C1'-N	-2.05	1.43	1.48

All (24) bond angle outliers are listed below:

Mol	Chain	Res	Type	Atoms	Z	Observed(°)	Ideal(°)
4	A	403	NHE	C1-N-C1'	6.74	127.37	114.14
4	A	405	NHE	C3'-C2'-C1'	6.26	122.88	111.11
4	A	405	NHE	C1-N-C1'	5.67	125.28	114.14
4	A	403	NHE	C6'-C1'-C2'	5.44	120.24	110.82
4	A	403	NHE	O1-S-C2	5.25	113.23	106.92
4	A	404	NHE	C5'-C6'-C1'	5.03	120.58	111.11
4	A	405	NHE	C5'-C6'-C1'	4.98	120.47	111.11
4	A	403	NHE	C5'-C6'-C1'	4.65	119.86	111.11
4	A	404	NHE	C6'-C1'-C2'	4.19	118.08	110.82
4	A	405	NHE	O2-S-C2	3.90	111.61	106.92
4	A	403	NHE	O2-S-C2	3.84	111.54	106.92
4	A	404	NHE	C1-N-C1'	3.83	121.66	114.14
4	A	405	NHE	C6'-C1'-C2'	3.55	116.98	110.82
4	A	404	NHE	C3'-C2'-C1'	3.55	117.79	111.11
4	A	405	NHE	C2-C1-N	3.36	120.81	111.25
4	A	404	NHE	O2-S-C2	3.32	110.91	106.92
4	A	403	NHE	C4'-C3'-C2'	2.72	116.96	111.42
4	A	404	NHE	O1-S-C2	2.53	109.96	106.92
4	A	405	NHE	C6'-C1'-N	2.47	121.15	110.57

Continued on next page...

Continued from previous page...

Mol	Chain	Res	Type	Atoms	Z	Observed($^{\circ}$)	Ideal($^{\circ}$)
4	A	405	NHE	C2'-C1'-N	2.43	120.98	110.57
4	A	403	NHE	O2-S-O1	-2.30	105.97	113.95
4	A	405	NHE	O1-S-C2	-2.29	104.16	106.92
4	A	405	NHE	O2-S-O1	-2.11	106.65	113.95
4	A	404	NHE	O3-S-O2	-2.08	106.19	111.27

There are no chirality outliers.

All (4) torsion outliers are listed below:

Mol	Chain	Res	Type	Atoms
4	A	405	NHE	N-C1-C2-S
4	A	403	NHE	C2'-C1'-N-C1
4	A	404	NHE	C6'-C1'-N-C1
4	A	403	NHE	C2-C1-N-C1'

There are no ring outliers.

1 monomer is involved in 7 short contacts:

Mol	Chain	Res	Type	Clashes	Symm-Clashes
4	A	403	NHE	7	0

5.7 Other polymers [i](#)

There are no such residues in this entry.

5.8 Polymer linkage issues [i](#)

There are no chain breaks in this entry.

6 Fit of model and data [i](#)

6.1 Protein, DNA and RNA chains [i](#)

In the following table, the column labelled ‘#RSRZ> 2’ contains the number (and percentage) of RSRZ outliers, followed by percent RSRZ outliers for the chain as percentile scores relative to all X-ray entries and entries of similar resolution. The OWAB column contains the minimum, median, 95th percentile and maximum values of the occupancy-weighted average B-factor per residue. The column labelled ‘Q< 0.9’ lists the number of (and percentage) of residues with an average occupancy less than 0.9.

Mol	Chain	Analysed	<RSRZ>	#RSRZ>2	OWAB(Å ²)	Q<0.9
1	A	270/319 (84%)	-0.98	0 100 100	10, 14, 23, 53	0

There are no RSRZ outliers to report.

6.2 Non-standard residues in protein, DNA, RNA chains [i](#)

There are no non-standard protein/DNA/RNA residues in this entry.

6.3 Carbohydrates [i](#)

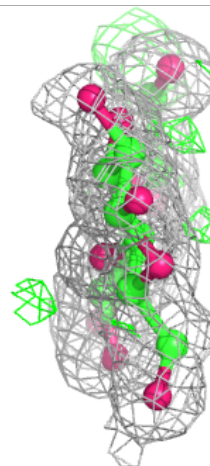
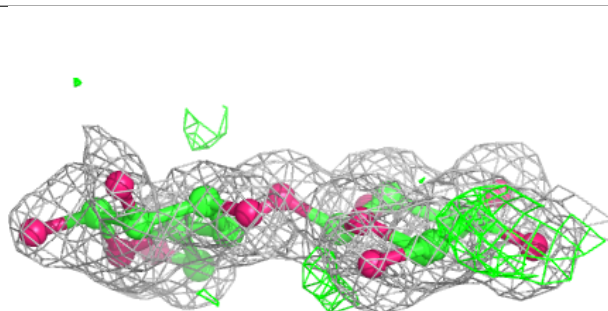
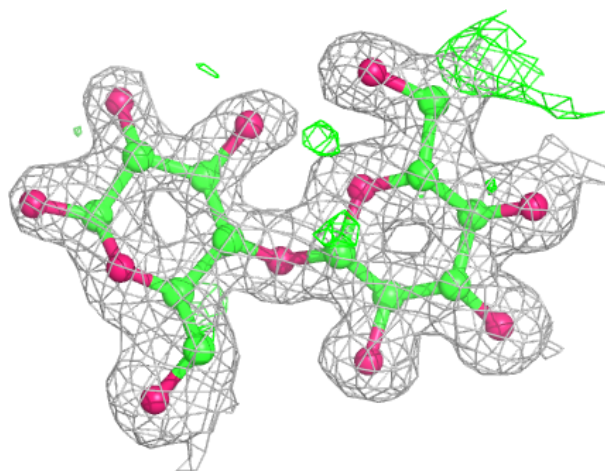
In the following table, the Atoms column lists the number of modelled atoms in the group and the number defined in the chemical component dictionary. The B-factors column lists the minimum, median, 95th percentile and maximum values of B factors of atoms in the group. The column labelled ‘Q< 0.9’ lists the number of atoms with occupancy less than 0.9.

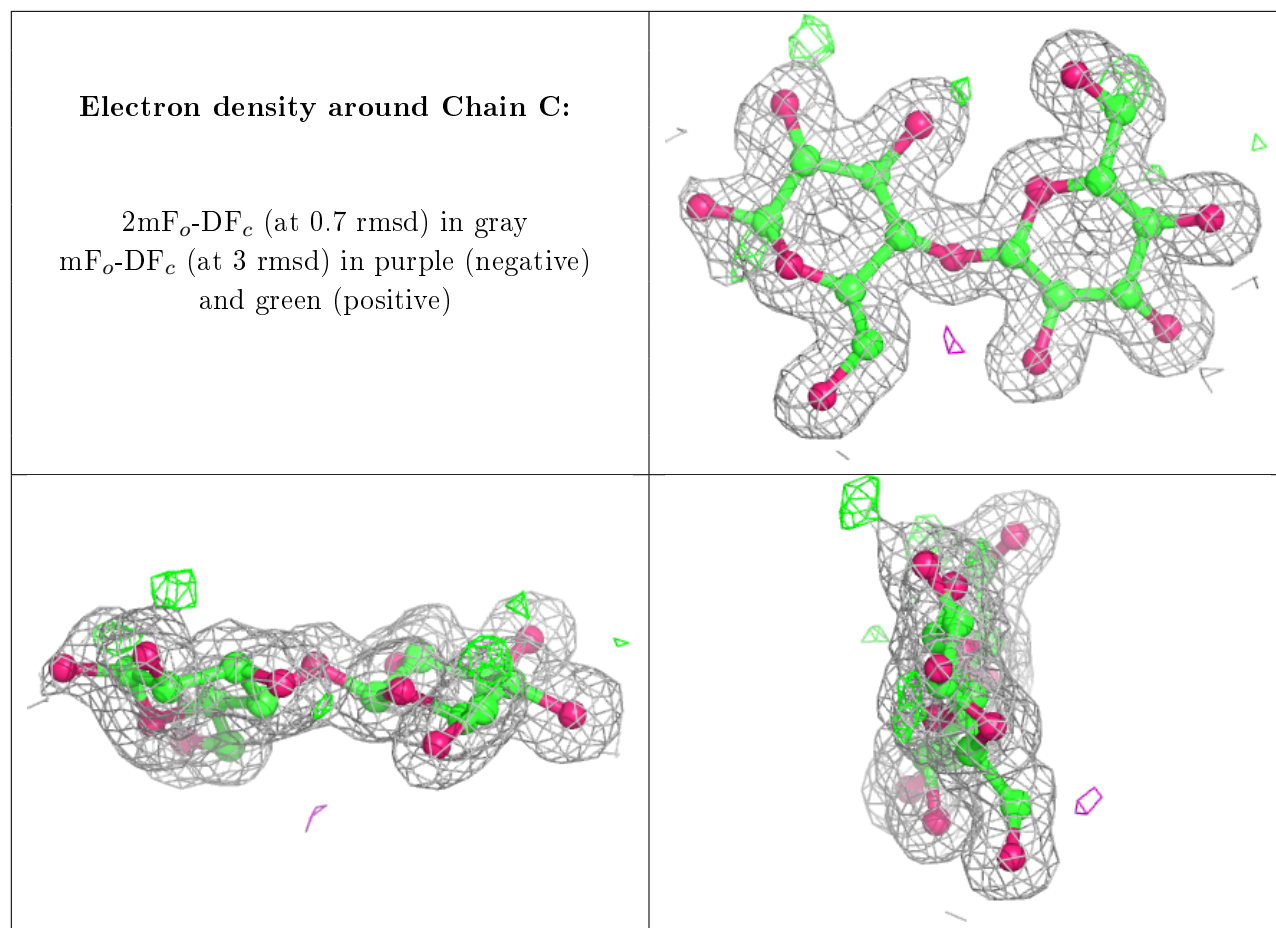
Mol	Type	Chain	Res	Atoms	RSCC	RSR	B-factors(Å ²)	Q<0.9
2	BGC	B	1	12/12	0.96	0.07	13,28,35,41	12
2	BGC	C	2	11/12	0.98	0.05	12,14,21,21	0
2	BGC	C	1	12/12	0.98	0.06	13,18,32,44	0
2	BGC	B	2	11/12	0.99	0.04	12,15,27,30	0

The following is a graphical depiction of the model fit to experimental electron density for oligosaccharide. Each fit is shown from different orientation to approximate a three-dimensional view.

Electron density around Chain B:

$2mF_o-DF_c$ (at 0.7 rmsd) in gray
 mF_o-DF_c (at 3 rmsd) in purple (negative)
and green (positive)





6.4 Ligands ⓘ

In the following table, the Atoms column lists the number of modelled atoms in the group and the number defined in the chemical component dictionary. The B-factors column lists the minimum, median, 95th percentile and maximum values of B factors of atoms in the group. The column labelled 'Q<0.9' lists the number of atoms with occupancy less than 0.9.

Mol	Type	Chain	Res	Atoms	RSCC	RSR	B-factors(\AA^2)	Q<0.9
4	NHE	A	403	13/13	0.87	0.14	14,19,32,33	13
4	NHE	A	405	13/13	0.93	0.12	20,24,68,110	0
4	NHE	A	404	13/13	0.99	0.05	19,21,35,38	0
3	CA	A	401	1/1	1.00	0.02	14,14,14,14	0
3	CA	A	402	1/1	1.00	0.04	12,12,12,12	1

6.5 Other polymers ⓘ

There are no such residues in this entry.