



Full wwPDB X-ray Structure Validation Report ⓘ

May 14, 2020 – 07:18 pm BST

PDB ID : 4WX0
Title : UndA complexed with beta-hydroxydodecanoic acid
Authors : Li, X.; Cate, J.D.H.
Deposited on : 2014-11-13
Resolution : 1.70 Å(reported)

This is a Full wwPDB X-ray Structure Validation Report for a publicly released PDB entry.

We welcome your comments at validation@mail.wwpdb.org

A user guide is available at

<https://www.wwpdb.org/validation/2017/XrayValidationReportHelp>

with specific help available everywhere you see the ⓘ symbol.

The following versions of software and data (see [references ⓘ](#)) were used in the production of this report:

MolProbity : 4.02b-467
Mogul : 1.8.5 (274361), CSD as541be (2020)
Xtriage (Phenix) : 1.13
EDS : 2.11
Percentile statistics : 20191225.v01 (using entries in the PDB archive December 25th 2019)
Refmac : 5.8.0158
CCP4 : 7.0.044 (Gargrove)
Ideal geometry (proteins) : Engh & Huber (2001)
Ideal geometry (DNA, RNA) : Parkinson et al. (1996)
Validation Pipeline (wwPDB-VP) : 2.11

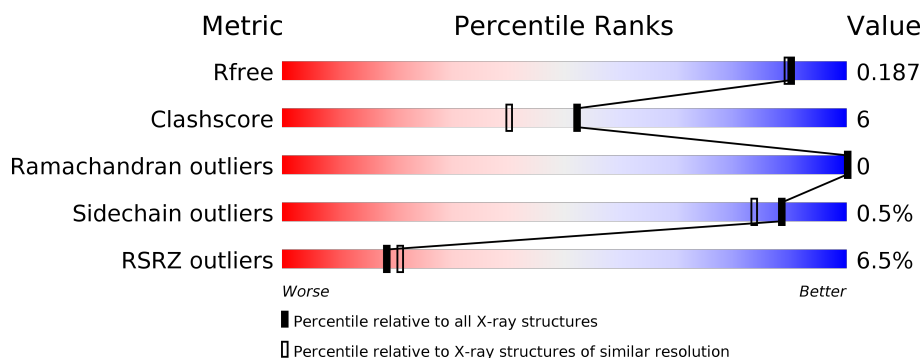
1 Overall quality at a glance

The following experimental techniques were used to determine the structure:

X-RAY DIFFRACTION

The reported resolution of this entry is 1.70 Å.

Percentile scores (ranging between 0-100) for global validation metrics of the entry are shown in the following graphic. The table shows the number of entries on which the scores are based.



Metric	Whole archive (#Entries)	Similar resolution (#Entries, resolution range(Å))
R_{free}	130704	4298 (1.70-1.70)
Clashscore	141614	4695 (1.70-1.70)
Ramachandran outliers	138981	4610 (1.70-1.70)
Sidechain outliers	138945	4610 (1.70-1.70)
RSRZ outliers	127900	4222 (1.70-1.70)

The table below summarises the geometric issues observed across the polymeric chains and their fit to the electron density. The red, orange, yellow and green segments on the lower bar indicate the fraction of residues that contain outliers for ≥ 3 , 2, 1 and 0 types of geometric quality criteria respectively. A grey segment represents the fraction of residues that are not modelled. The numeric value for each fraction is indicated below the corresponding segment, with a dot representing fractions $\leq 5\%$. The upper red bar (where present) indicates the fraction of residues that have poor fit to the electron density. The numeric value is given above the bar.

Mol	Chain	Length	Quality of chain
1	A	263	<div> <div>3%</div> <div>87%</div> <div>10%</div> <div>.</div> </div>
1	B	263	<div> <div>9%</div> <div>88%</div> <div>8%</div> <div>.</div> </div>

The following table lists non-polymeric compounds, carbohydrate monomers and non-standard residues in protein, DNA, RNA chains that are outliers for geometric or electron-density-fit criteria:

Mol	Type	Chain	Res	Chirality	Geometry	Clashes	Electron density
4	PER	B	303	-	-	X	-
5	SO4	A	304	-	-	X	-

2 Entry composition

There are 6 unique types of molecules in this entry. The entry contains 4821 atoms, of which 0 are hydrogens and 0 are deuteriums.

In the tables below, the ZeroOcc column contains the number of atoms modelled with zero occupancy, the AltConf column contains the number of residues with at least one atom in alternate conformation and the Trace column contains the number of residues modelled with at most 2 atoms.

- Molecule 1 is a protein called TENA/THI-4 family protein.

Mol	Chain	Residues	Atoms					ZeroOcc	AltConf	Trace
1	A	256	Total	C	N	O	S	0	1	0
			2095	1326	378	376	15			
1	B	255	Total	C	N	O	S	0	1	0
			2087	1320	377	375	15			

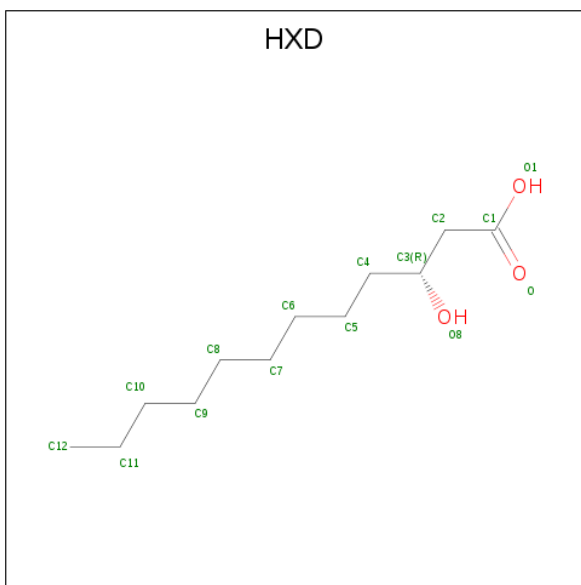
There are 4 discrepancies between the modelled and reference sequences:

Chain	Residue	Modelled	Actual	Comment	Reference
A	-1	GLY	-	expression tag	UNP Q4K8M0
A	0	PRO	-	expression tag	UNP Q4K8M0
B	-1	GLY	-	expression tag	UNP Q4K8M0
B	0	PRO	-	expression tag	UNP Q4K8M0

- Molecule 2 is FE (III) ION (three-letter code: FE) (formula: Fe).

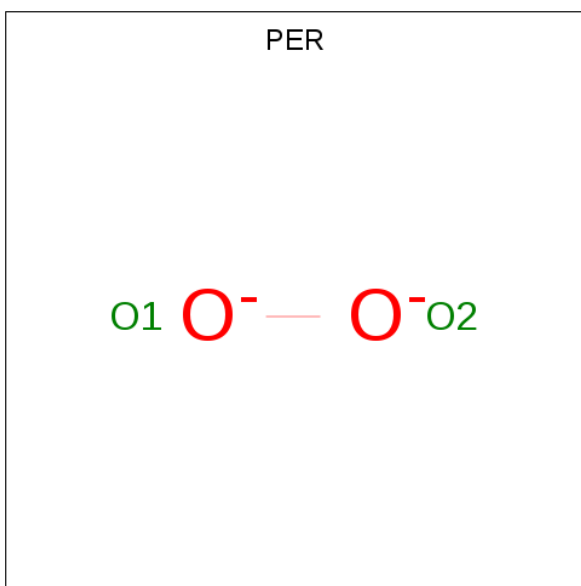
Mol	Chain	Residues	Atoms		ZeroOcc	AltConf
2	B	1	Total	Fe	0	0
			1	1		
2	A	1	Total	Fe	0	0
			1	1		

- Molecule 3 is (3R)-3-HYDROXYDODECANOIC ACID (three-letter code: HXD) (formula: C₁₂H₂₄O₃).



Mol	Chain	Residues	Atoms			ZeroOcc	AltConf
3	A	1	Total	C	O	0	0
			15	12	3		
3	B	1	Total	C	O	0	0
			15	12	3		

- Molecule 4 is PEROXIDE ION (three-letter code: PER) (formula: O₂).



Mol	Chain	Residues	Atoms		ZeroOcc	AltConf
4	A	1	Total	O	0	0
			2	2		
4	B	1	Total	O	0	0
			2	2		

- Molecule 5 is SULFATE ION (three-letter code: SO4) (formula: O₄S).

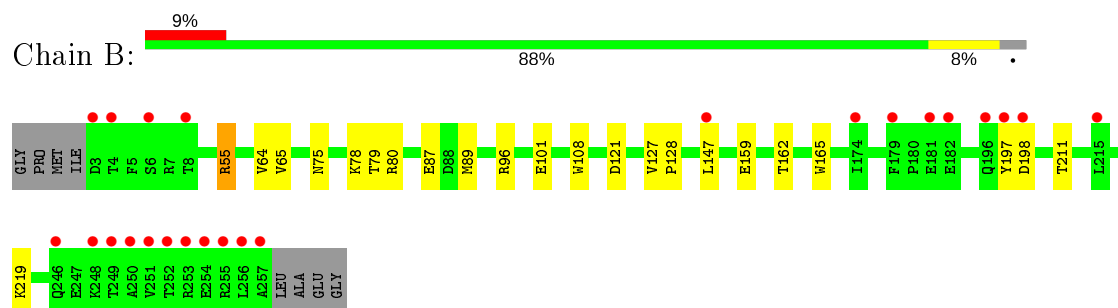
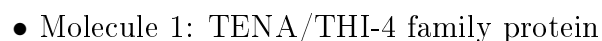


Mol	Chain	Residues	Atoms			ZeroOcc	AltConf
5	A	1	Total	O	S	0	0
			5	4	1		
5	A	1	Total	O	S	0	0
			5	4	1		
5	A	1	Total	O	S	0	0
			5	4	1		
5	A	1	Total	O	S	0	0
			5	4	1		
5	B	1	Total	O	S	0	0
			5	4	1		
5	B	1	Total	O	S	0	0
			5	4	1		
5	B	1	Total	O	S	0	0
			5	4	1		

- Molecule 6 is water.

Mol	Chain	Residues	Atoms		ZeroOcc	AltConf
6	A	347	Total	O	0	0
			347	347		
6	B	216	Total	O	0	0
			216	216		

- Molecule 1: TENA/THI-4 family protein



4 Data and refinement statistics

Property	Value	Source
Space group	P 2 2 21	Depositor
Cell constants a, b, c, α , β , γ	67.41Å 73.99Å 142.51Å 90.00° 90.00° 90.00°	Depositor
Resolution (Å)	65.75 – 1.70 65.67 – 1.70	Depositor EDS
% Data completeness (in resolution range)	95.6 (65.75-1.70) 95.6 (65.67-1.70)	Depositor EDS
R_{merge}	(Not available)	Depositor
R_{sym}	(Not available)	Depositor
$\langle I/\sigma(I) \rangle$ ¹	1.68 (at 1.70Å)	Xtriage
Refinement program	REFMAC 5.8.0049, PHENIX	Depositor
R, R_{free}	0.137 , 0.185 0.147 , 0.187	Depositor DCC
R_{free} test set	3839 reflections (5.07%)	wwPDB-VP
Wilson B-factor (Å ²)	23.2	Xtriage
Anisotropy	0.229	Xtriage
Bulk solvent k_{sol} (e/Å ³), B_{sol} (Å ²)	0.36 , 50.6	EDS
L-test for twinning ²	$\langle L \rangle = 0.49$, $\langle L^2 \rangle = 0.32$	Xtriage
Estimated twinning fraction	No twinning to report.	Xtriage
F_o, F_c correlation	0.97	EDS
Total number of atoms	4821	wwPDB-VP
Average B, all atoms (Å ²)	31.0	wwPDB-VP

Xtriage's analysis on translational NCS is as follows: *The largest off-origin peak in the Patterson function is 5.84% of the height of the origin peak. No significant pseudotranslation is detected.*

¹Intensities estimated from amplitudes.

²Theoretical values of $\langle |L| \rangle$, $\langle L^2 \rangle$ for acentric reflections are 0.5, 0.333 respectively for untwinned datasets, and 0.375, 0.2 for perfectly twinned datasets.

5 Model quality ⓘ

5.1 Standard geometry ⓘ

Bond lengths and bond angles in the following residue types are not validated in this section: HXD, SO4, PER, FE

The Z score for a bond length (or angle) is the number of standard deviations the observed value is removed from the expected value. A bond length (or angle) with $|Z| > 5$ is considered an outlier worth inspection. RMSZ is the root-mean-square of all Z scores of the bond lengths (or angles).

Mol	Chain	Bond lengths		Bond angles	
		RMSZ	$\# Z > 5$	RMSZ	$\# Z > 5$
1	A	0.67	0/2150	0.73	4/2919 (0.1%)
1	B	0.58	1/2142 (0.0%)	0.67	1/2908 (0.0%)
All	All	0.63	1/4292 (0.0%)	0.70	5/5827 (0.1%)

All (1) bond length outliers are listed below:

Mol	Chain	Res	Type	Atoms	Z	Observed(Å)	Ideal(Å)
1	B	128	PRO	N-CD	5.11	1.55	1.47

All (5) bond angle outliers are listed below:

Mol	Chain	Res	Type	Atoms	Z	Observed(°)	Ideal(°)
1	A	54	MET	CG-SD-CE	-6.71	89.47	100.20
1	A	200	ALA	CA-C-N	6.39	131.25	117.20
1	A	200	ALA	O-C-N	-5.71	113.57	122.70
1	A	80	ARG	NE-CZ-NH1	-5.16	117.72	120.30
1	B	127	VAL	C-N-CD	5.12	139.15	128.40

There are no chirality outliers.

There are no planarity outliers.

5.2 Too-close contacts ⓘ

In the following table, the Non-H and H(model) columns list the number of non-hydrogen atoms and hydrogen atoms in the chain respectively. The H(added) column lists the number of hydrogen atoms added and optimized by MolProbity. The Clashes column lists the number of clashes within the asymmetric unit, whereas Symm-Clashes lists symmetry related clashes.

Mol	Chain	Non-H	H(model)	H(added)	Clashes	Symm-Clashes
1	A	2095	0	2040	27	0
1	B	2087	0	2029	18	0
2	A	1	0	0	0	0
2	B	1	0	0	0	0
3	A	15	0	22	0	0
3	B	15	0	22	0	0
4	A	2	0	0	1	0
4	B	2	0	0	2	0
5	A	20	0	0	3	0
5	B	20	0	0	1	0
6	A	347	0	0	12	0
6	B	216	0	0	4	0
All	All	4821	0	4113	46	0

The all-atom clashscore is defined as the number of clashes found per 1000 atoms (including hydrogen atoms). The all-atom clashscore for this structure is 6.

All (46) close contacts within the same asymmetric unit are listed below, sorted by their clash magnitude.

Atom-1	Atom-2	Interatomic distance (Å)	Clash overlap (Å)
1:A:201[B]:HIS:ND1	6:A:725:HOH:O	1.64	1.28
1:A:75:ASN:O	1:A:147:LEU:HD21	1.58	1.01
5:A:306:SO4:O1	6:A:527:HOH:O	1.78	1.01
1:B:75:ASN:O	1:B:147:LEU:HD21	1.61	1.00
1:A:96:ARG:NH1	5:A:304:SO4:O1	2.15	0.78
1:A:201[B]:HIS:HD2	6:A:631:HOH:O	1.65	0.78
1:A:242:ARG:NH1	1:A:246:GLN:OE1	2.22	0.72
1:A:67:GLN:OE1	6:A:512:HOH:O	2.13	0.66
1:A:246:GLN:NE2	6:A:658:HOH:O	2.32	0.62
1:B:147:LEU:HD12	6:B:558:HOH:O	2.01	0.60
1:B:87:GLU:HB3	6:B:481:HOH:O	2.01	0.59
1:B:159:GLU:OE1	4:B:303:PER:O2	2.21	0.58
1:A:52:LYS:NZ	6:A:675:HOH:O	2.36	0.58
1:A:101:GLU:OE2	4:A:303:PER:O2	2.21	0.57
1:A:87:GLU:HB3	6:A:582:HOH:O	2.03	0.56
1:A:201[B]:HIS:CE1	6:A:725:HOH:O	2.27	0.55
1:B:162:THR:HA	1:B:165:TRP:CD1	2.42	0.55
1:B:96:ARG:NH1	6:B:401:HOH:O	2.41	0.53
1:B:197:TYR:CD2	1:B:198:ASP:HB2	2.44	0.52
1:A:201[B]:HIS:CE1	6:A:630:HOH:O	2.64	0.50
1:B:219:LYS:N	5:B:306:SO4:O4	2.43	0.49
1:A:162:THR:HA	1:A:165:TRP:CD1	2.48	0.48

Continued on next page...

Continued from previous page...

Atom-1	Atom-2	Interatomic distance (Å)	Clash overlap (Å)
1:B:78:LYS:HB2	1:B:147:LEU:CG	2.45	0.47
1:B:78:LYS:HB2	1:B:147:LEU:HG	1.97	0.47
1:A:242:ARG:NH1	1:A:245:GLN:OE1	2.48	0.46
1:A:78:LYS:HB2	1:A:147:LEU:CG	2.45	0.46
1:A:79:THR:HG22	1:A:147:LEU:HD13	1.98	0.46
1:A:34:ARG:NH2	6:A:632:HOH:O	2.48	0.45
1:A:78:LYS:HB2	1:A:147:LEU:HG	1.98	0.45
1:A:75:ASN:C	1:A:147:LEU:HD21	2.35	0.45
1:B:101:GLU:OE2	4:B:303:PER:O2	2.34	0.45
1:B:65:VAL:HG21	1:B:108:TRP:CE3	2.52	0.44
1:B:79:THR:HG22	1:B:147:LEU:HD13	1.98	0.44
1:A:79:THR:O	1:A:80:ARG:HD3	2.18	0.44
1:A:96:ARG:NH1	5:A:304:SO4:S	2.91	0.43
1:B:55:ARG:NH1	1:B:121:ASP:OD2	2.51	0.43
1:A:147:LEU:HD12	6:A:560:HOH:O	2.18	0.42
1:A:189:LYS:O	1:A:193:MET:HG2	2.20	0.42
1:A:242:ARG:HH12	1:A:246:GLN:CD	2.19	0.42
1:B:64:VAL:HG23	6:B:485:HOH:O	2.21	0.41
1:B:79:THR:O	1:B:80:ARG:HD3	2.20	0.41
1:A:65:VAL:HG21	1:A:108:TRP:CE3	2.56	0.40
1:A:58:LEU:HD13	1:A:112:SER:HA	2.04	0.40
1:B:75:ASN:C	1:B:147:LEU:HD21	2.38	0.40
1:B:89:MET:HE3	1:B:211:THR:HG21	2.03	0.40
1:A:64:VAL:HG23	6:A:629:HOH:O	2.21	0.40

There are no symmetry-related clashes.

5.3 Torsion angles [i](#)

5.3.1 Protein backbone [i](#)

In the following table, the Percentiles column shows the percent Ramachandran outliers of the chain as a percentile score with respect to all X-ray entries followed by that with respect to entries of similar resolution.

The Analysed column shows the number of residues for which the backbone conformation was analysed, and the total number of residues.

Mol	Chain	Analysed	Favoured	Allowed	Outliers	Percentiles	
1	A	255/263 (97%)	252 (99%)	3 (1%)	0	100	100

Continued on next page...

Continued from previous page...

Mol	Chain	Analysed	Favoured	Allowed	Outliers	Percentiles	
1	B	254/263 (97%)	251 (99%)	3 (1%)	0	100	100
All	All	509/526 (97%)	503 (99%)	6 (1%)	0	100	100

There are no Ramachandran outliers to report.

5.3.2 Protein sidechains [i](#)

In the following table, the Percentiles column shows the percent sidechain outliers of the chain as a percentile score with respect to all X-ray entries followed by that with respect to entries of similar resolution.

The Analysed column shows the number of residues for which the sidechain conformation was analysed, and the total number of residues.

Mol	Chain	Analysed	Rotameric	Outliers	Percentiles	
1	A	216/219 (99%)	215 (100%)	1 (0%)	88	83
1	B	215/219 (98%)	214 (100%)	1 (0%)	88	83
All	All	431/438 (98%)	429 (100%)	2 (0%)	88	83

All (2) residues with a non-rotameric sidechain are listed below:

Mol	Chain	Res	Type
1	A	197	TYR
1	B	55	ARG

Some sidechains can be flipped to improve hydrogen bonding and reduce clashes. All (3) such sidechains are listed below:

Mol	Chain	Res	Type
1	A	97	ASN
1	A	196	GLN
1	B	196	GLN

5.3.3 RNA [i](#)

There are no RNA molecules in this entry.

5.4 Non-standard residues in protein, DNA, RNA chains [i](#)

There are no non-standard protein/DNA/RNA residues in this entry.

5.5 Carbohydrates [i](#)

There are no carbohydrates in this entry.

5.6 Ligand geometry [i](#)

Of 14 ligands modelled in this entry, 2 are monoatomic - leaving 12 for Mogul analysis.

In the following table, the Counts columns list the number of bonds (or angles) for which Mogul statistics could be retrieved, the number of bonds (or angles) that are observed in the model and the number of bonds (or angles) that are defined in the Chemical Component Dictionary. The Link column lists molecule types, if any, to which the group is linked. The Z score for a bond length (or angle) is the number of standard deviations the observed value is removed from the expected value. A bond length (or angle) with $|Z| > 2$ is considered an outlier worth inspection. RMSZ is the root-mean-square of all Z scores of the bond lengths (or angles).

Mol	Type	Chain	Res	Link	Bond lengths			Bond angles		
					Counts	RMSZ	$\# Z > 2$	Counts	RMSZ	$\# Z > 2$
5	SO4	A	304	-	4,4,4	0.31	0	6,6,6	0.38	0
3	HXD	B	302	2	11,14,14	0.30	0	11,15,15	0.58	0
5	SO4	B	305	-	4,4,4	0.32	0	6,6,6	0.09	0
5	SO4	B	306	-	4,4,4	0.44	0	6,6,6	0.20	0
5	SO4	A	306	-	4,4,4	0.38	0	6,6,6	0.13	0
5	SO4	B	304	-	4,4,4	0.32	0	6,6,6	0.08	0
5	SO4	A	305	-	4,4,4	0.39	0	6,6,6	0.25	0
3	HXD	A	302	2	11,14,14	0.20	0	11,15,15	0.59	0
5	SO4	B	307	-	4,4,4	0.33	0	6,6,6	0.10	0
5	SO4	A	307	-	4,4,4	0.44	0	6,6,6	0.22	0
4	PER	A	303	2	0,1,1	0.00	-	-		
4	PER	B	303	2	0,1,1	0.00	-	-		

In the following table, the Chirals column lists the number of chiral outliers, the number of chiral centers analysed, the number of these observed in the model and the number defined in the Chemical Component Dictionary. Similar counts are reported in the Torsion and Rings columns. '-' means no outliers of that kind were identified.

Mol	Type	Chain	Res	Link	Chirals	Torsions	Rings
3	HXD	B	302	2	-	1/11/13/13	-
3	HXD	A	302	2	-	1/11/13/13	-

There are no bond length outliers.

There are no bond angle outliers.

There are no chirality outliers.

All (2) torsion outliers are listed below:

Mol	Chain	Res	Type	Atoms
3	B	302	HXD	C11-C10-C9-C8
3	A	302	HXD	C11-C10-C9-C8

There are no ring outliers.

5 monomers are involved in 7 short contacts:

Mol	Chain	Res	Type	Clashes	Symm-Clashes
5	A	304	SO4	2	0
5	B	306	SO4	1	0
5	A	306	SO4	1	0
4	A	303	PER	1	0
4	B	303	PER	2	0

5.7 Other polymers [i](#)

There are no such residues in this entry.

5.8 Polymer linkage issues [i](#)

There are no chain breaks in this entry.

6 Fit of model and data ⓘ

6.1 Protein, DNA and RNA chains ⓘ

In the following table, the column labelled ‘#RSRZ> 2’ contains the number (and percentage) of RSRZ outliers, followed by percent RSRZ outliers for the chain as percentile scores relative to all X-ray entries and entries of similar resolution. The OWAB column contains the minimum, median, 95th percentile and maximum values of the occupancy-weighted average B-factor per residue. The column labelled ‘Q< 0.9’ lists the number of (and percentage) of residues with an average occupancy less than 0.9.

Mol	Chain	Analysed	<RSRZ>	#RSRZ>2	OWAB(Å ²)	Q<0.9
1	A	256/263 (97%)	-0.02	9 (3%) 44 49	12, 19, 41, 89	0
1	B	255/263 (96%)	0.64	24 (9%) 8 9	15, 31, 79, 130	0
All	All	511/526 (97%)	0.31	33 (6%) 18 21	12, 24, 59, 130	0

All (33) RSRZ outliers are listed below:

Mol	Chain	Res	Type	RSRZ
1	B	256	LEU	18.2
1	B	257	ALA	15.0
1	A	197	TYR	12.4
1	B	197	TYR	12.4
1	B	255	ARG	12.1
1	B	251	VAL	11.5
1	B	250	ALA	9.4
1	B	198	ASP	8.5
1	A	2	ILE	7.7
1	B	253	ARG	7.7
1	B	249	THR	7.7
1	B	252	THR	7.6
1	B	3	ASP	6.7
1	B	254	GLU	6.5
1	A	198	ASP	6.4
1	B	248	LYS	5.2
1	A	147	LEU	3.6
1	B	4	THR	3.6
1	B	147	LEU	3.5
1	A	196	GLN	3.3
1	B	8	THR	3.0
1	B	246	GLN	2.9
1	B	181	GLU	2.9
1	B	196	GLN	2.8

Continued on next page...

Continued from previous page...

Mol	Chain	Res	Type	RSRZ
1	B	182	GLU	2.7
1	A	4	THR	2.6
1	B	179	PHE	2.6
1	A	3	ASP	2.4
1	A	195	ALA	2.3
1	A	8	THR	2.3
1	B	6	SER	2.2
1	B	215	LEU	2.1
1	B	174	ILE	2.1

6.2 Non-standard residues in protein, DNA, RNA chains [i](#)

There are no non-standard protein/DNA/RNA residues in this entry.

6.3 Carbohydrates [i](#)

There are no carbohydrates in this entry.

6.4 Ligands [i](#)

In the following table, the Atoms column lists the number of modelled atoms in the group and the number defined in the chemical component dictionary. The B-factors column lists the minimum, median, 95th percentile and maximum values of B factors of atoms in the group. The column labelled 'Q< 0.9' lists the number of atoms with occupancy less than 0.9.

Mol	Type	Chain	Res	Atoms	RSCC	RSR	B-factors(Å ²)	Q<0.9
5	SO4	B	306	5/5	0.83	0.32	86,87,98,106	0
5	SO4	B	307	5/5	0.89	0.30	53,89,109,111	0
5	SO4	A	307	5/5	0.93	0.27	60,67,79,95	0
5	SO4	A	306	5/5	0.94	0.23	55,57,80,83	0
5	SO4	A	305	5/5	0.95	0.10	46,52,79,81	0
5	SO4	B	305	5/5	0.96	0.14	66,74,82,85	0
3	HXD	B	302	15/15	0.96	0.08	25,31,35,36	0
5	SO4	B	304	5/5	0.97	0.09	50,65,75,76	0
3	HXD	A	302	15/15	0.97	0.07	17,21,26,28	0
4	PER	B	303	2/2	0.97	0.08	31,31,31,47	0
4	PER	A	303	2/2	0.98	0.13	22,22,22,41	0
5	SO4	A	304	5/5	0.99	0.10	47,49,54,65	0
2	FE	B	301	1/1	1.00	0.06	31,31,31,31	0
2	FE	A	301	1/1	1.00	0.07	21,21,21,21	0

6.5 Other polymers [i](#)

There are no such residues in this entry.