



# Full wwPDB X-ray Structure Validation Report ⓘ

Mar 1, 2021 – 04:12 PM EST

PDB ID : 6WX3  
Title : High resolution Tryptophan Synthase crystal structure from *Salmonella typhimurium* in complex with F9 inhibitor in the alpha-site, Cesium ion at the metal coordination site and internal aldimine form.  
Authors : Hilario, E.; Dunn, M.F.; Mueller, L.J.; Fan, L.  
Deposited on : 2020-05-09  
Resolution : 1.20 Å(reported)

This is a Full wwPDB X-ray Structure Validation Report for a publicly released PDB entry.

We welcome your comments at [validation@mail.wwpdb.org](mailto:validation@mail.wwpdb.org)

A user guide is available at

<https://www.wwpdb.org/validation/2017/XrayValidationReportHelp>

with specific help available everywhere you see the ⓘ symbol.

---

The following versions of software and data (see [references ⓘ](#)) were used in the production of this report:

MolProbity : 4.02b-467  
Mogul : 1.8.5 (274361), CSD as541be (2020)  
Xtriage (Phenix) : 1.13  
EDS : 2.17.1  
buster-report : 1.1.7 (2018)  
Percentile statistics : 20191225.v01 (using entries in the PDB archive December 25th 2019)  
Refmac : 5.8.0158  
CCP4 : 7.0.044 (Gargrove)  
Ideal geometry (proteins) : Engh & Huber (2001)  
Ideal geometry (DNA, RNA) : Parkinson et al. (1996)  
Validation Pipeline (wwPDB-VP) : 2.17.1

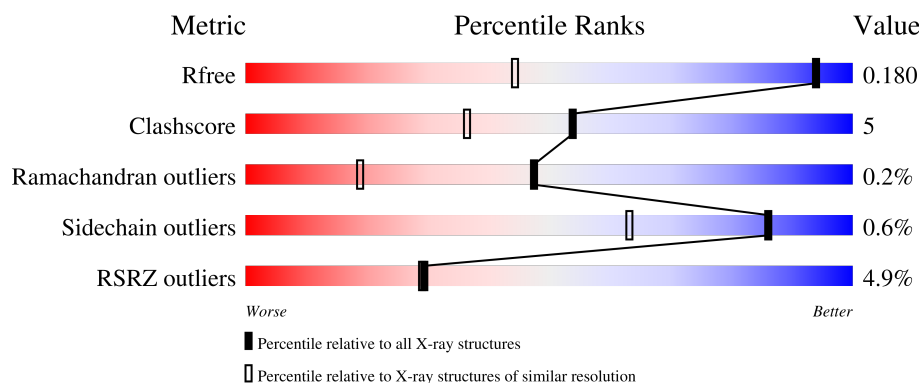
# 1 Overall quality at a glance

The following experimental techniques were used to determine the structure:

*X-RAY DIFFRACTION*

The reported resolution of this entry is 1.20 Å.

Percentile scores (ranging between 0-100) for global validation metrics of the entry are shown in the following graphic. The table shows the number of entries on which the scores are based.



Metric	Whole archive (#Entries)	Similar resolution (#Entries, resolution range(Å))
$R_{free}$	130704	1223 (1.22-1.18)
Clashscore	141614	1286 (1.22-1.18)
Ramachandran outliers	138981	1240 (1.22-1.18)
Sidechain outliers	138945	1239 (1.22-1.18)
RSRZ outliers	127900	1200 (1.22-1.18)

The table below summarises the geometric issues observed across the polymeric chains and their fit to the electron density. The red, orange, yellow and green segments of the lower bar indicate the fraction of residues that contain outliers for  $\geq 3$ , 2, 1 and 0 types of geometric quality criteria respectively. A grey segment represents the fraction of residues that are not modelled. The numeric value for each fraction is indicated below the corresponding segment, with a dot representing fractions  $\leq 5\%$ . The upper red bar (where present) indicates the fraction of residues that have poor fit to the electron density. The numeric value is given above the bar.

Mol	Chain	Length	Quality of chain
1	A	268	<div> <div>7%</div> <div>91%</div> <div>9%</div> </div>
2	B	397	<div> <div>3%</div> <div>90%</div> <div>8%</div> <div>.</div> </div>

The following table lists non-polymeric compounds, carbohydrate monomers and non-standard residues in protein, DNA, RNA chains that are outliers for geometric or electron-density-fit criteria:

Mol	Type	Chain	Res	Chirality	Geometry	Clashes	Electron density
4	CL	A	302	-	-	X	-

## 2 Entry composition [i](#)

There are 10 unique types of molecules in this entry. The entry contains 6271 atoms, of which 0 are hydrogens and 0 are deuteriums.

In the tables below, the ZeroOcc column contains the number of atoms modelled with zero occupancy, the AltConf column contains the number of residues with at least one atom in alternate conformation and the Trace column contains the number of residues modelled with at most 2 atoms.

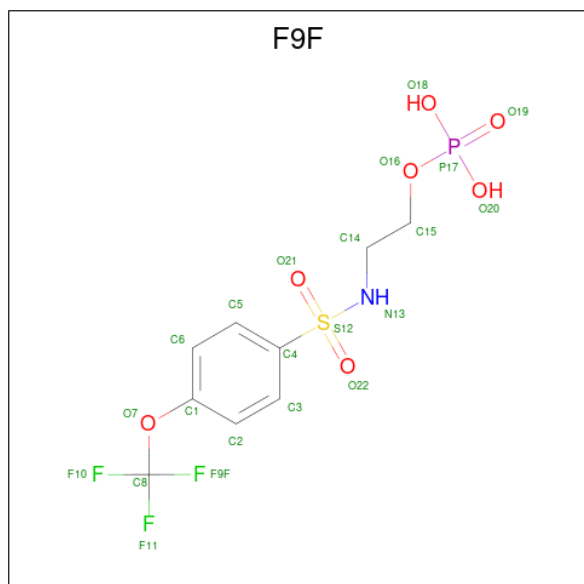
- Molecule 1 is a protein called Tryptophan synthase alpha chain.

Mol	Chain	Residues	Atoms					ZeroOcc	AltConf	Trace
1	A	268	Total	C	N	O	S	0	13	0
			2099	1333	363	394	9			

- Molecule 2 is a protein called Tryptophan synthase beta chain.

Mol	Chain	Residues	Atoms					ZeroOcc	AltConf	Trace
2	B	389	Total	C	N	O	S	0	38	0
			3225	2040	556	604	25			

- Molecule 3 is 2-([4-(TRIFLUOROMETHOXY)PHENYL]SULFONYL)AMINO)ETHYL DIHYDROGEN PHOSPHATE (three-letter code: F9F) (formula: C<sub>9</sub>H<sub>11</sub>F<sub>3</sub>NO<sub>7</sub>PS) (labeled as "Ligand of Interest" by depositor).

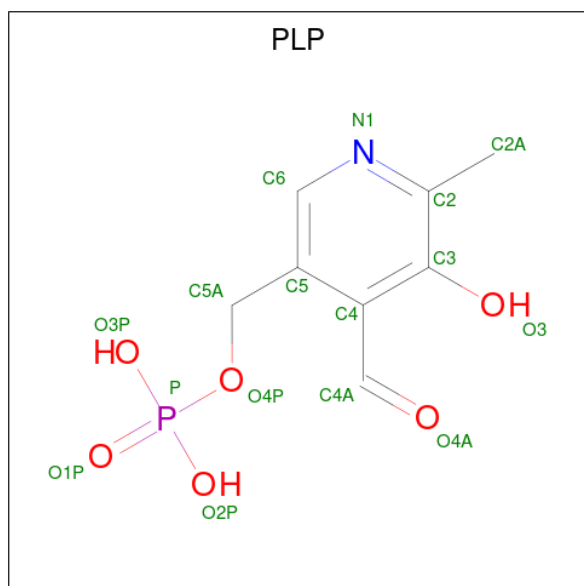


Mol	Chain	Residues	Atoms							ZeroOcc	AltConf
3	A	1	Total	C	F	N	O	P	S	0	0
			22	9	3	1	7	1	1		

- Molecule 4 is CHLORIDE ION (three-letter code: CL) (formula: Cl).

Mol	Chain	Residues	Atoms		ZeroOcc	AltConf
4	A	1	Total	Cl	0	0
			1	1		

- Molecule 5 is PYRIDOXAL-5'-PHOSPHATE (three-letter code: PLP) (formula: C<sub>8</sub>H<sub>10</sub>NO<sub>6</sub>P) (labeled as "Ligand of Interest" by depositor).

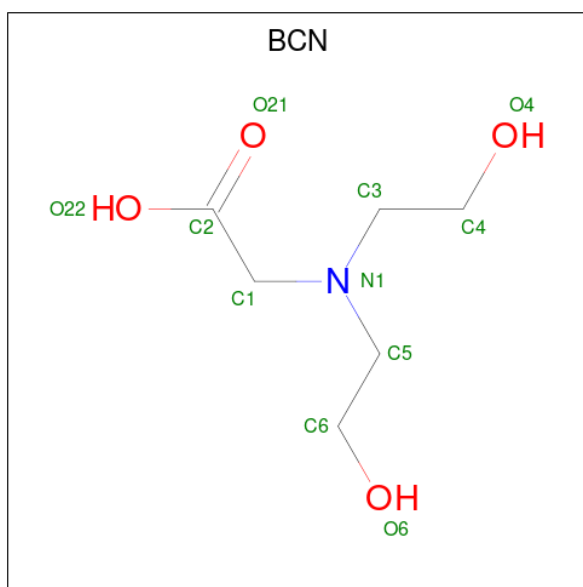


Mol	Chain	Residues	Atoms					ZeroOcc	AltConf
5	B	1	Total	C	N	O	P	0	0
			15	8	1	5	1		

- Molecule 6 is CESIUM ION (three-letter code: CS) (formula: Cs) (labeled as "Ligand of Interest" by depositor).

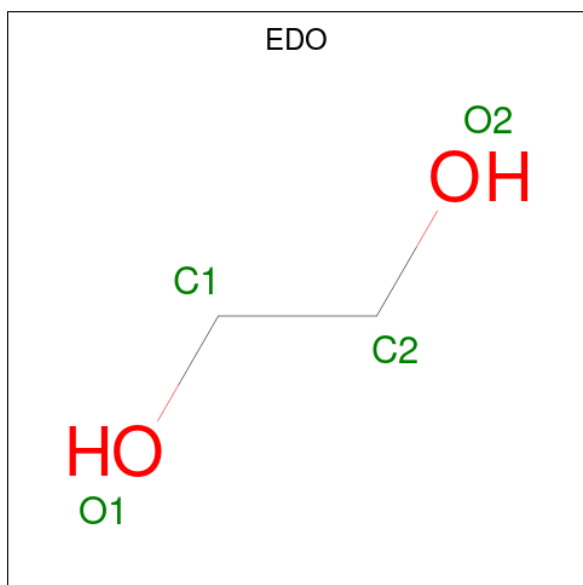
Mol	Chain	Residues	Atoms		ZeroOcc	AltConf
6	B	2	Total	Cs	0	1
			3	3		

- Molecule 7 is BICINE (three-letter code: BCN) (formula: C<sub>6</sub>H<sub>13</sub>NO<sub>4</sub>).



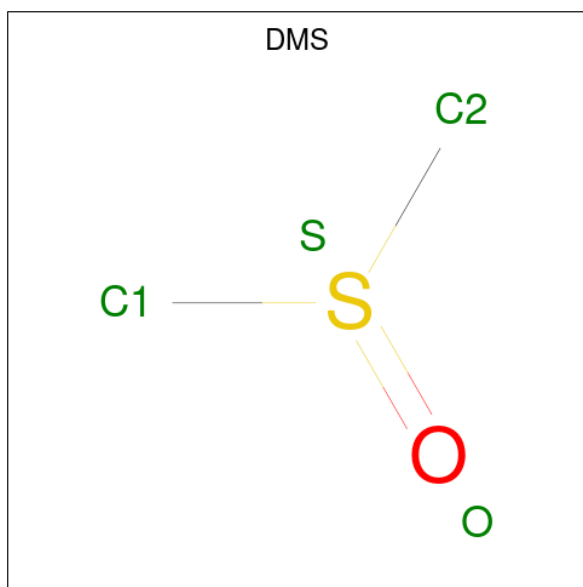
Mol	Chain	Residues	Atoms				ZeroOcc	AltConf
7	B	1	Total	C	N	O	0	0
			11	6	1	4		
7	B	1	Total	C	N	O	0	0
			11	6	1	4		
7	B	1	Total	C	N	O	0	0
			11	6	1	4		
7	B	1	Total	C	N	O	0	0
			11	6	1	4		

- Molecule 8 is 1,2-ETHANEDIOL (three-letter code: EDO) (formula:  $C_2H_6O_2$ ).



Mol	Chain	Residues	Atoms			ZeroOcc	AltConf
8	B	1	Total	C	O	0	0
			4	2	2		
8	B	1	Total	C	O	0	0
			4	2	2		

- Molecule 9 is DIMETHYL SULFOXIDE (three-letter code: DMS) (formula: C<sub>2</sub>H<sub>6</sub>OS).



Mol	Chain	Residues	Atoms				ZeroOcc	AltConf
9	B	1	Total	C	O	S	0	0
			4	2	1	1		

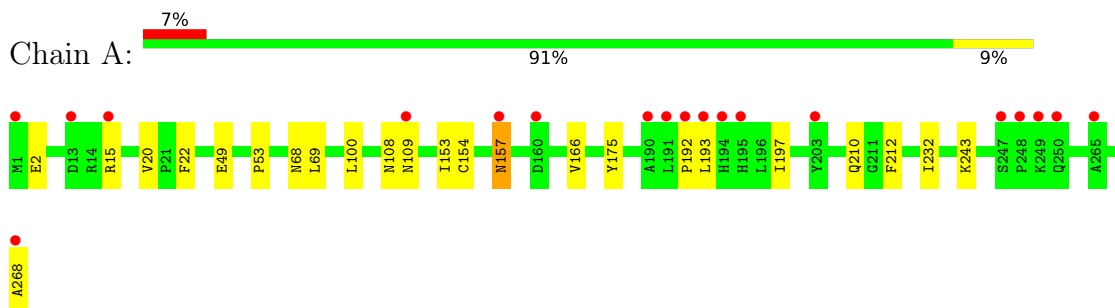
- Molecule 10 is water.

Mol	Chain	Residues	Atoms		ZeroOcc	AltConf
10	A	327	Total	O	0	6
			333	333		
10	B	500	Total	O	0	17
			517	517		

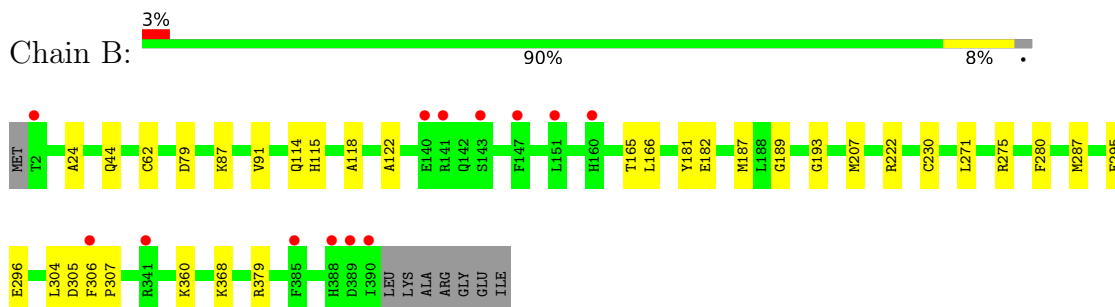
### 3 Residue-property plots [i](#)

These plots are drawn for all protein, RNA, DNA and oligosaccharide chains in the entry. The first graphic for a chain summarises the proportions of the various outlier classes displayed in the second graphic. The second graphic shows the sequence view annotated by issues in geometry and electron density. Residues are color-coded according to the number of geometric quality criteria for which they contain at least one outlier: green = 0, yellow = 1, orange = 2 and red = 3 or more. A red dot above a residue indicates a poor fit to the electron density ( $RSRZ > 2$ ). Stretches of 2 or more consecutive residues without any outlier are shown as a green connector. Residues present in the sample, but not in the model, are shown in grey.

- Molecule 1: Tryptophan synthase alpha chain



- Molecule 2: Tryptophan synthase beta chain





## 4 Data and refinement statistics

Property	Value	Source
Space group	C 1 2 1	Depositor
Cell constants a, b, c, $\alpha$ , $\beta$ , $\gamma$	182.12Å 59.06Å 67.41Å 90.00° 94.84° 90.00°	Depositor
Resolution (Å)	36.23 – 1.20 36.20 – 1.20	Depositor EDS
% Data completeness (in resolution range)	95.9 (36.23-1.20) 95.9 (36.20-1.20)	Depositor EDS
$R_{merge}$	(Not available)	Depositor
$R_{sym}$	0.10	Depositor
$\langle I/\sigma(I) \rangle$ <sup>1</sup>	1.41 (at 1.20Å)	Xtriage
Refinement program	REFMAC 5.8.0258	Depositor
R, $R_{free}$	0.155 , 0.181 0.153 , 0.180	Depositor DCC
$R_{free}$ test set	10452 reflections (4.91%)	wwPDB-VP
Wilson B-factor (Å <sup>2</sup> )	8.3	Xtriage
Anisotropy	1.334	Xtriage
Bulk solvent $k_{sol}$ (e/Å <sup>3</sup> ), $B_{sol}$ (Å <sup>2</sup> )	0.40 , 61.0	EDS
L-test for twinning <sup>2</sup>	$\langle  L  \rangle = 0.49$ , $\langle L^2 \rangle = 0.33$	Xtriage
Estimated twinning fraction	No twinning to report.	Xtriage
$F_o, F_c$ correlation	0.97	EDS
Total number of atoms	6271	wwPDB-VP
Average B, all atoms (Å <sup>2</sup> )	17.0	wwPDB-VP

Xtriage's analysis on translational NCS is as follows: *The largest off-origin peak in the Patterson function is 6.00% of the height of the origin peak. No significant pseudotranslation is detected.*

<sup>1</sup>Intensities estimated from amplitudes.

<sup>2</sup>Theoretical values of  $\langle |L| \rangle$ ,  $\langle L^2 \rangle$  for acentric reflections are 0.5, 0.333 respectively for untwinned datasets, and 0.375, 0.2 for perfectly twinned datasets.

## 5 Model quality [i](#)

### 5.1 Standard geometry [i](#)

Bond lengths and bond angles in the following residue types are not validated in this section: F9F, CS, EDO, PLP, BCN, DMS, CL

The Z score for a bond length (or angle) is the number of standard deviations the observed value is removed from the expected value. A bond length (or angle) with  $|Z| > 5$  is considered an outlier worth inspection. RMSZ is the root-mean-square of all Z scores of the bond lengths (or angles).

Mol	Chain	Bond lengths		Bond angles	
		RMSZ	# Z  >5	RMSZ	# Z  >5
1	A	0.32	0/2161	0.62	0/2932
2	B	0.34	0/3351	0.65	0/4519
All	All	0.33	0/5512	0.64	0/7451

There are no bond length outliers.

There are no bond angle outliers.

There are no chirality outliers.

There are no planarity outliers.

### 5.2 Too-close contacts [i](#)

In the following table, the Non-H and H(model) columns list the number of non-hydrogen atoms and hydrogen atoms in the chain respectively. The H(added) column lists the number of hydrogen atoms added and optimized by MolProbity. The Clashes column lists the number of clashes within the asymmetric unit, whereas Symm-Clashes lists symmetry-related clashes.

Mol	Chain	Non-H	H(model)	H(added)	Clashes	Symm-Clashes
1	A	2099	0	2117	24	0
2	B	3225	0	3242	32	0
3	A	22	0	9	1	0
4	A	1	0	0	2	0
5	B	15	0	6	0	0
6	B	3	0	0	0	0
7	B	44	0	48	0	0
8	B	8	0	12	1	0
9	B	4	0	6	0	0
10	A	333	0	0	7	0
10	B	517	0	0	13	0
All	All	6271	0	5440	58	0

The all-atom clashscore is defined as the number of clashes found per 1000 atoms (including hydrogen atoms). The all-atom clashscore for this structure is 5.

All (58) close contacts within the same asymmetric unit are listed below, sorted by their clash magnitude.

Atom-1	Atom-2	Interatomic distance (Å)	Clash overlap (Å)
4:A:302:CL:CL	10:A:612:HOH:O	1.94	1.23
1:A:192:PRO:CB	1:A:197:ILE:HD11	2.05	0.87
2:B:222[B]:ARG:NH1	10:B:1501:HOH:O	2.12	0.81
1:A:108:ASN:ND2	10:A:401:HOH:O	2.15	0.79
1:A:109:ASN:HB2	10:A:437:HOH:O	1.83	0.78
2:B:165[B]:THR:HG22	10:B:1509:HOH:O	1.81	0.78
1:A:192:PRO:HB2	1:A:197:ILE:CD1	2.14	0.77
1:A:192:PRO:HB2	1:A:197:ILE:HD11	1.67	0.76
1:A:192:PRO:HB3	1:A:197:ILE:HD11	1.68	0.74
2:B:306[B]:PHE:CD1	2:B:307[B]:PRO:HD2	2.23	0.73
2:B:230[B]:CYS:SG	2:B:304:LEU:HD11	2.30	0.72
1:A:192:PRO:HG3	1:A:210:GLN:OE1	1.91	0.70
2:B:181[C]:TYR:CE2	10:B:1634:HOH:O	2.45	0.69
1:A:153:ILE:HG12	10:A:477[B]:HOH:O	1.95	0.66
4:A:302:CL:CL	10:A:491:HOH:O	2.50	0.65
1:A:157:ASN:ND2	1:A:157:ASN:H	1.95	0.65
2:B:230[B]:CYS:SG	2:B:304:LEU:CD1	2.86	0.63
2:B:181[C]:TYR:CZ	10:B:1634:HOH:O	2.50	0.63
1:A:15:ARG:O	1:A:268:ALA:HB2	1.99	0.62
2:B:296[B]:GLU:N	2:B:296[B]:GLU:OE2	2.32	0.61
1:A:243:LYS:HG3	10:A:603:HOH:O	2.03	0.57
2:B:165[B]:THR:HG21	10:B:1562[B]:HOH:O	2.03	0.56
2:B:91[B]:VAL:HG13	2:B:187[B]:MET:SD	2.45	0.56
2:B:379[A]:ARG:HD3	10:B:1516:HOH:O	2.05	0.55
2:B:360[A]:LYS:HG3	10:B:1645:HOH:O	2.05	0.55
1:A:192:PRO:HB2	1:A:197:ILE:HD12	1.88	0.55
2:B:44[A]:GLN:HG3	10:B:1763:HOH:O	2.07	0.54
2:B:368:LYS:HE2	8:B:1407:EDO:H11	1.88	0.54
2:B:24:ALA:HB2	2:B:181[B]:TYR:HB2	1.90	0.54
1:A:154[B]:CYS:SG	1:A:166:VAL:HG11	2.50	0.52
2:B:62[B]:CYS:O	10:B:1502:HOH:O	2.19	0.52
2:B:296[B]:GLU:H	2:B:296[B]:GLU:CD	2.13	0.52
1:A:69:LEU:HD11	10:B:1682:HOH:O	2.09	0.51
2:B:91[B]:VAL:HG12	2:B:122:ALA:CB	2.42	0.50
2:B:165[B]:THR:HG22	2:B:166:LEU:H	1.77	0.50
2:B:181[B]:TYR:CA	2:B:182:GLU:N	2.75	0.49
1:A:22:PHE:HA	1:A:49[A]:GLU:O	2.12	0.48

*Continued on next page...*

Continued from previous page...

Atom-1	Atom-2	Interatomic distance (Å)	Clash overlap (Å)
1:A:175:TYR:CE2	3:A:301:F9F:H5	2.48	0.47
2:B:379[B]:ARG:NH1	10:B:1507:HOH:O	2.47	0.47
1:A:193:LEU:HD23	1:A:193:LEU:HA	1.84	0.45
1:A:157:ASN:ND2	1:A:157:ASN:N	2.62	0.45
2:B:295[B]:GLU:HG2	2:B:296[B]:GLU:H	1.81	0.45
2:B:115:HIS:CE1	2:B:189:GLY:HA2	2.52	0.44
2:B:305[B]:ASP:O	2:B:306[B]:PHE:C	2.55	0.44
2:B:79:ASP:HB2	2:B:379[A]:ARG:HB3	1.98	0.44
2:B:91[B]:VAL:HG12	2:B:122:ALA:HB2	1.99	0.43
1:A:192:PRO:CB	1:A:197:ILE:CD1	2.79	0.43
2:B:193:GLY:HA2	2:B:280:PHE:O	2.19	0.43
1:A:153:ILE:CG1	10:A:477[B]:HOH:O	2.63	0.42
2:B:275[A]:ARG:HD2	10:B:1836:HOH:O	2.19	0.42
2:B:91[B]:VAL:HG11	2:B:118:ALA:O	2.19	0.42
2:B:87:LYS:HD2	2:B:114:GLN:HG3	2.02	0.42
2:B:271[B]:LEU:HD12	10:B:1701:HOH:O	2.19	0.42
1:A:153:ILE:HD13	1:A:175:TYR:HB3	2.02	0.41
2:B:287[B]:MET:HA	2:B:287[B]:MET:CE	2.51	0.41
1:A:20:VAL:O	1:A:232:ILE:HA	2.20	0.40
1:A:53:PRO:HA	1:A:68:ASN:OD1	2.21	0.40
1:A:100:LEU:C	1:A:100:LEU:HD13	2.41	0.40

There are no symmetry-related clashes.

## 5.3 Torsion angles ⓘ

### 5.3.1 Protein backbone ⓘ

In the following table, the Percentiles column shows the percent Ramachandran outliers of the chain as a percentile score with respect to all X-ray entries followed by that with respect to entries of similar resolution.

The Analysed column shows the number of residues for which the backbone conformation was analysed, and the total number of residues.

Mol	Chain	Analysed	Favoured	Allowed	Outliers	Percentiles	
1	A	279/268 (104%)	274 (98%)	4 (1%)	1 (0%)	34	11
2	B	428/397 (108%)	419 (98%)	9 (2%)	0	100	100
All	All	707/665 (106%)	693 (98%)	13 (2%)	1 (0%)	47	19

All (1) Ramachandran outliers are listed below:

Mol	Chain	Res	Type
1	A	212	PHE

### 5.3.2 Protein sidechains [i](#)

In the following table, the Percentiles column shows the percent sidechain outliers of the chain as a percentile score with respect to all X-ray entries followed by that with respect to entries of similar resolution.

The Analysed column shows the number of residues for which the sidechain conformation was analysed, and the total number of residues.

Mol	Chain	Analysed	Rotameric	Outliers	Percentiles	
1	A	221/208 (106%)	219 (99%)	2 (1%)	78	50
2	B	346/311 (111%)	345 (100%)	1 (0%)	92	79
All	All	567/519 (109%)	564 (100%)	3 (0%)	86	67

All (3) residues with a non-rotameric sidechain are listed below:

Mol	Chain	Res	Type
1	A	2	GLU
1	A	157	ASN
2	B	207	MET

Sometimes sidechains can be flipped to improve hydrogen bonding and reduce clashes. All (1) such sidechains are listed below:

Mol	Chain	Res	Type
1	A	157	ASN

### 5.3.3 RNA [i](#)

There are no RNA molecules in this entry.

## 5.4 Non-standard residues in protein, DNA, RNA chains [i](#)

There are no non-standard protein/DNA/RNA residues in this entry.

## 5.5 Carbohydrates [i](#)

There are no monosaccharides in this entry.

## 5.6 Ligand geometry [i](#)

Of 13 ligands modelled in this entry, 4 are monoatomic - leaving 9 for Mogul analysis.

In the following table, the Counts columns list the number of bonds (or angles) for which Mogul statistics could be retrieved, the number of bonds (or angles) that are observed in the model and the number of bonds (or angles) that are defined in the Chemical Component Dictionary. The Link column lists molecule types, if any, to which the group is linked. The Z score for a bond length (or angle) is the number of standard deviations the observed value is removed from the expected value. A bond length (or angle) with  $|Z| > 2$  is considered an outlier worth inspection. RMSZ is the root-mean-square of all Z scores of the bond lengths (or angles).

Mol	Type	Chain	Res	Link	Bond lengths			Bond angles		
					Counts	RMSZ	# $ Z  > 2$	Counts	RMSZ	# $ Z  > 2$
3	F9F	A	301	-	22,22,22	0.52	0	32,33,33	0.69	0
7	BCN	B	1403	-	7,10,10	0.15	0	8,11,11	0.77	0
8	EDO	B	1409	-	3,3,3	0.06	0	2,2,2	0.19	0
7	BCN	B	1406	-	7,10,10	0.24	0	8,11,11	1.64	2 (25%)
7	BCN	B	1405	-	7,10,10	0.12	0	8,11,11	0.43	0
5	PLP	B	1401	2	15,15,16	0.87	1 (6%)	20,22,23	1.31	2 (10%)
8	EDO	B	1407	-	3,3,3	0.10	0	2,2,2	0.34	0
9	DMS	B	1408	-	3,3,3	0.23	0	3,3,3	0.10	0
7	BCN	B	1404	-	7,10,10	0.22	0	8,11,11	0.81	0

In the following table, the Chirals column lists the number of chiral outliers, the number of chiral centers analysed, the number of these observed in the model and the number defined in the Chemical Component Dictionary. Similar counts are reported in the Torsion and Rings columns. '-' means no outliers of that kind were identified.

Mol	Type	Chain	Res	Link	Chirals	Torsions	Rings
3	F9F	A	301	-	-	6/20/20/20	0/1/1/1
7	BCN	B	1403	-	-	2/8/10/10	-
8	EDO	B	1409	-	-	1/1/1/1	-
7	BCN	B	1406	-	-	2/8/10/10	-
7	BCN	B	1405	-	-	4/8/10/10	-
5	PLP	B	1401	2	-	0/6/6/8	0/1/1/1
8	EDO	B	1407	-	-	1/1/1/1	-
7	BCN	B	1404	-	-	2/8/10/10	-

All (1) bond length outliers are listed below:

Mol	Chain	Res	Type	Atoms	Z	Observed(Å)	Ideal(Å)
5	B	1401	PLP	C4A-C4	-2.13	1.47	1.51

All (4) bond angle outliers are listed below:

Mol	Chain	Res	Type	Atoms	Z	Observed(°)	Ideal(°)
5	B	1401	PLP	C4A-C4-C5	3.32	124.36	120.94
7	B	1406	BCN	C2-C1-N1	-3.31	108.78	113.48
5	B	1401	PLP	O4P-C5A-C5	2.84	114.77	109.35
7	B	1406	BCN	C5-N1-C3	2.55	117.51	111.44

There are no chirality outliers.

All (18) torsion outliers are listed below:

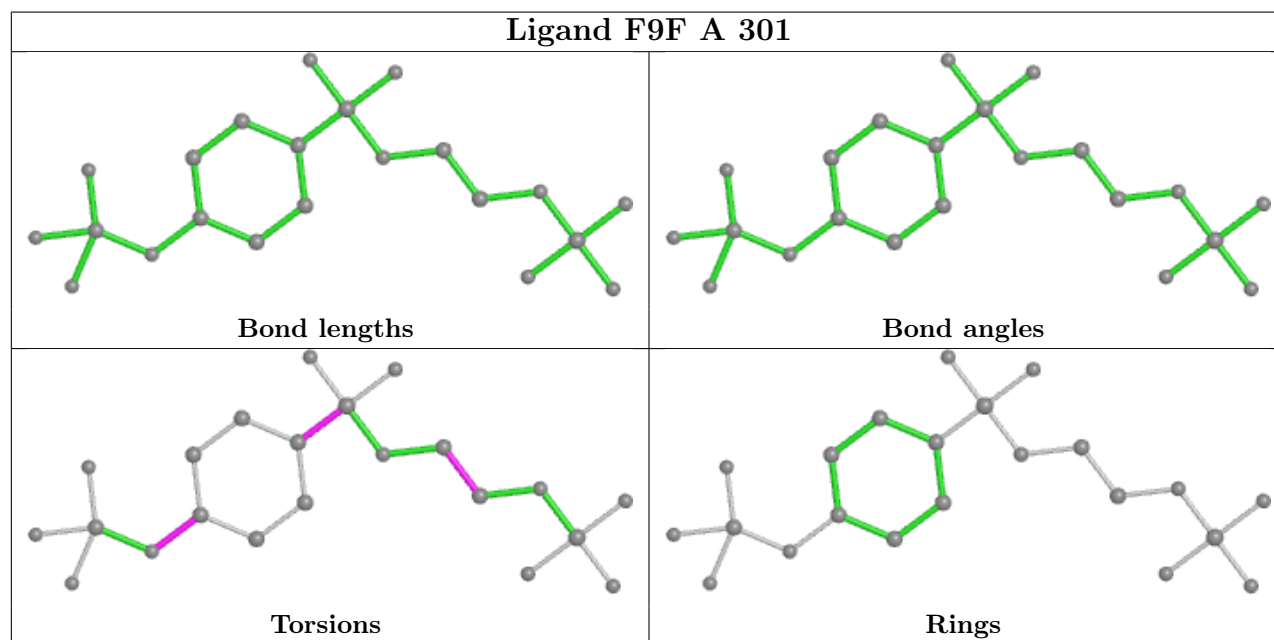
Mol	Chain	Res	Type	Atoms
7	B	1406	BCN	N1-C5-C6-O6
7	B	1405	BCN	N1-C3-C4-O4
8	B	1407	EDO	O1-C1-C2-O2
7	B	1405	BCN	C2-C1-N1-C3
3	A	301	F9F	C3-C4-S12-O21
7	B	1405	BCN	C2-C1-N1-C5
3	A	301	F9F	C5-C4-S12-O21
7	B	1403	BCN	C2-C1-N1-C3
8	B	1409	EDO	O1-C1-C2-O2
3	A	301	F9F	N13-C14-C15-O16
7	B	1406	BCN	C4-C3-N1-C1
7	B	1403	BCN	C2-C1-N1-C5
7	B	1404	BCN	C2-C1-N1-C3
3	A	301	F9F	C6-C1-O7-C8
7	B	1404	BCN	C2-C1-N1-C5
7	B	1405	BCN	C4-C3-N1-C5
3	A	301	F9F	C2-C1-O7-C8
3	A	301	F9F	C3-C4-S12-N13

There are no ring outliers.

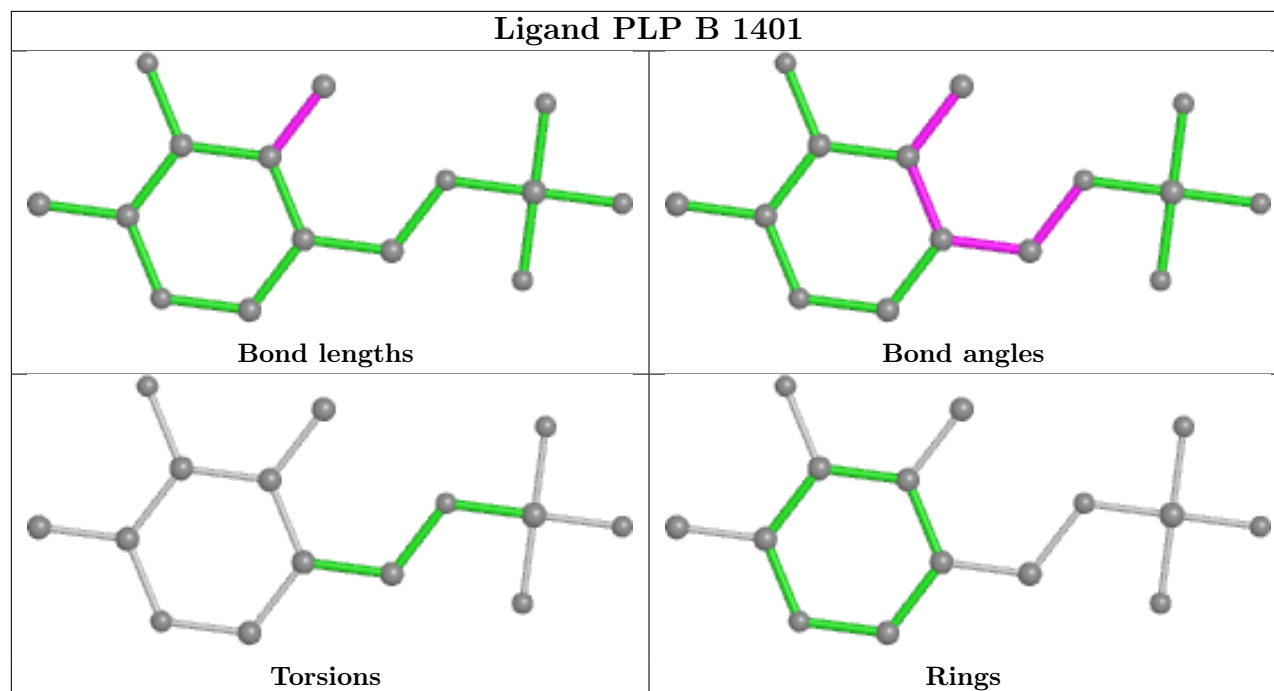
2 monomers are involved in 2 short contacts:

Mol	Chain	Res	Type	Clashes	Symm-Clashes
3	A	301	F9F	1	0
8	B	1407	EDO	1	0

The following is a two-dimensional graphical depiction of Mogul quality analysis of bond lengths, bond angles, torsion angles, and ring geometry for all instances of the Ligand of Interest. In addition, ligands with molecular weight > 250 and outliers as shown on the validation Tables will also be included. For torsion angles, if less than 5% of the Mogul distribution of torsion angles is within 10 degrees of the torsion angle in question, then that torsion angle is considered an outlier. Any bond that is central to one or more torsion angles identified as an outlier by Mogul will be highlighted in the graph. For rings, the root-mean-square deviation (RMSD) between the ring in question and similar rings identified by Mogul is calculated over all ring torsion angles. If the average RMSD is greater than 60 degrees and the minimal RMSD between the ring in question and any Mogul-identified rings is also greater than 60 degrees, then that ring is considered an outlier. The outliers are highlighted in purple. The color gray indicates Mogul did not find sufficient equivalents in the CSD to analyse the geometry.







## 5.7 Other polymers [i](#)

There are no such residues in this entry.

## 5.8 Polymer linkage issues [i](#)

There are no chain breaks in this entry.

## 6 Fit of model and data

### 6.1 Protein, DNA and RNA chains

In the following table, the column labelled ‘#RSRZ > 2’ contains the number (and percentage) of RSRZ outliers, followed by percent RSRZ outliers for the chain as percentile scores relative to all X-ray entries and entries of similar resolution. The OWAB column contains the minimum, median, 95<sup>th</sup> percentile and maximum values of the occupancy-weighted average B-factor per residue. The column labelled ‘Q < 0.9’ lists the number of (and percentage) of residues with an average occupancy less than 0.9.

Mol	Chain	Analysed	<RSRZ>	#RSRZ>2	OWAB(Å <sup>2</sup> )	Q<0.9
1	A	268/268 (100%)	0.29	19 (7%) 16 14	7, 14, 32, 58	8 (2%)
2	B	389/397 (97%)	0.27	13 (3%) 46 45	6, 11, 23, 50	4 (1%)
All	All	657/665 (98%)	0.28	32 (4%) 29 29	6, 13, 29, 58	12 (1%)

All (32) RSRZ outliers are listed below:

Mol	Chain	Res	Type	RSRZ
1	A	193	LEU	8.1
1	A	191	LEU	7.3
2	B	385	PHE	6.0
1	A	192	PRO	6.0
1	A	268	ALA	4.4
2	B	388	HIS	4.1
1	A	1	MET	4.1
2	B	390	ILE	4.0
1	A	190	ALA	3.7
2	B	2	THR	3.5
1	A	194	HIS	3.4
1	A	195	HIS	3.2
2	B	140	GLU	3.2
1	A	203	TYR	3.2
2	B	141	ARG	3.1
1	A	13	ASP	3.0
1	A	160	ASP	2.6
1	A	15	ARG	2.5
1	A	109	ASN	2.5
2	B	143[A]	SER	2.5
2	B	389	ASP	2.5
1	A	265	ALA	2.4
1	A	247	SER	2.4
2	B	306[A]	PHE	2.4

*Continued on next page...*

*Continued from previous page...*

Mol	Chain	Res	Type	RSRZ
2	B	160	HIS	2.3
1	A	249	LYS	2.3
1	A	250	GLN	2.3
1	A	248	PRO	2.2
1	A	157	ASN	2.2
2	B	341	ARG	2.2
2	B	151	LEU	2.1
2	B	147	PHE	2.0

## 6.2 Non-standard residues in protein, DNA, RNA chains ⓘ

There are no non-standard protein/DNA/RNA residues in this entry.

## 6.3 Carbohydrates ⓘ

There are no monosaccharides in this entry.

## 6.4 Ligands ⓘ

In the following table, the Atoms column lists the number of modelled atoms in the group and the number defined in the chemical component dictionary. The B-factors column lists the minimum, median, 95<sup>th</sup> percentile and maximum values of B factors of atoms in the group. The column labelled 'Q< 0.9' lists the number of atoms with occupancy less than 0.9.

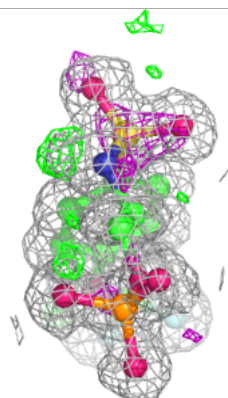
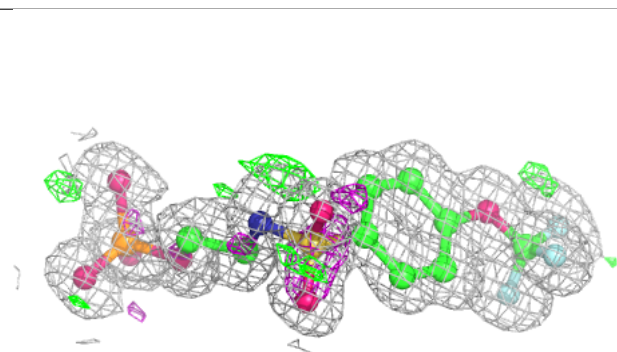
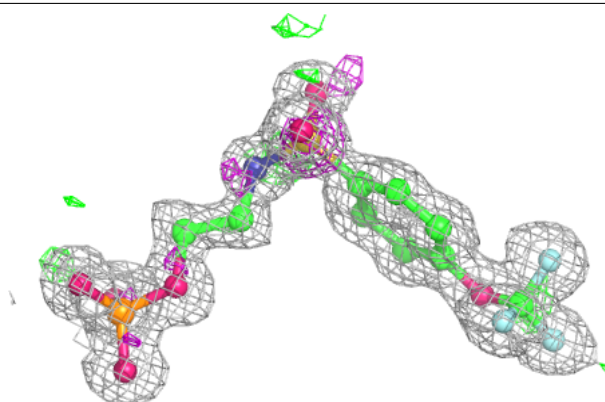
Mol	Type	Chain	Res	Atoms	RSCC	RSR	B-factors(Å <sup>2</sup> )	Q<0.9
8	EDO	B	1407	4/4	0.79	0.20	26,28,33,41	0
7	BCN	B	1406	11/11	0.83	0.20	22,28,37,39	0
7	BCN	B	1403	11/11	0.83	0.28	18,29,35,40	0
9	DMS	B	1408	4/4	0.85	0.28	75,80,83,87	0
8	EDO	B	1409	4/4	0.86	0.09	40,40,41,43	0
7	BCN	B	1405	11/11	0.93	0.27	22,31,36,37	0
7	BCN	B	1404	11/11	0.94	0.12	11,20,23,23	0
4	CL	A	302	1/1	0.98	0.11	27,27,27,27	0
3	F9F	A	301	22/22	0.98	0.06	10,12,14,16	0
6	CS	B	1402[A]	1/1	0.99	0.05	25,25,25,25	1
6	CS	B	1402[B]	1/1	0.99	0.05	16,16,16,16	1
5	PLP	B	1401	15/16	0.99	0.08	7,9,16,16	0
6	CS	B	1410	1/1	1.00	0.05	15,15,15,15	1

The following is a graphical depiction of the model fit to experimental electron density of all

instances of the Ligand of Interest. In addition, ligands with molecular weight > 250 and outliers as shown on the geometry validation Tables will also be included. Each fit is shown from different orientation to approximate a three-dimensional view.

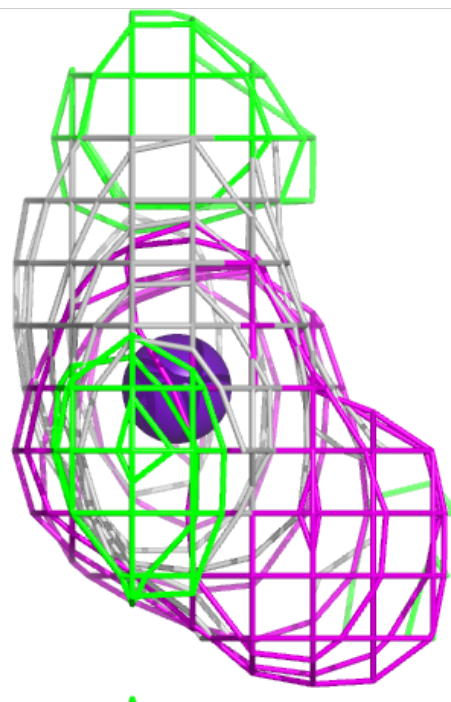
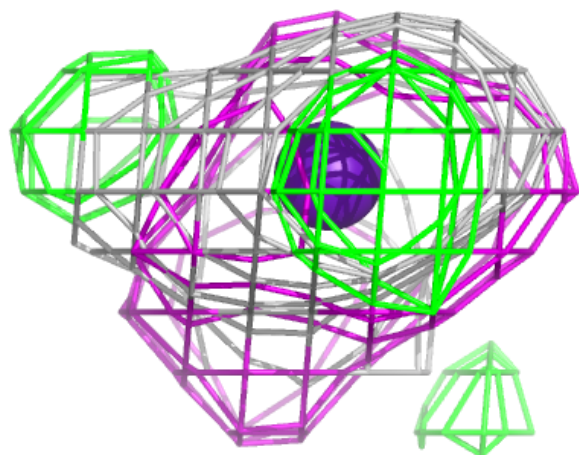
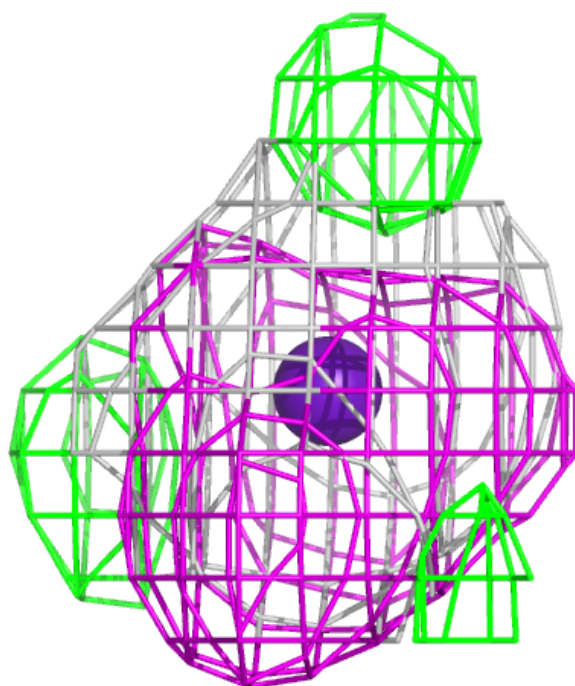
**Electron density around F9F A 301:**

$2mF_o - DF_c$  (at 0.7 rmsd) in gray  
 $mF_o - DF_c$  (at 3 rmsd) in purple (negative)  
and green (positive)



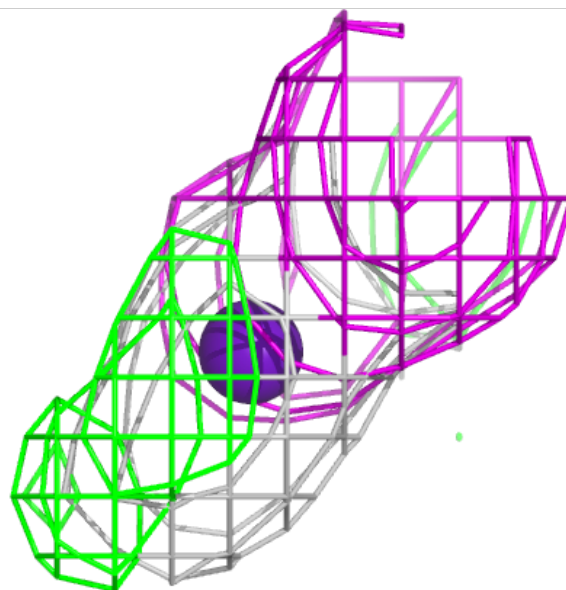
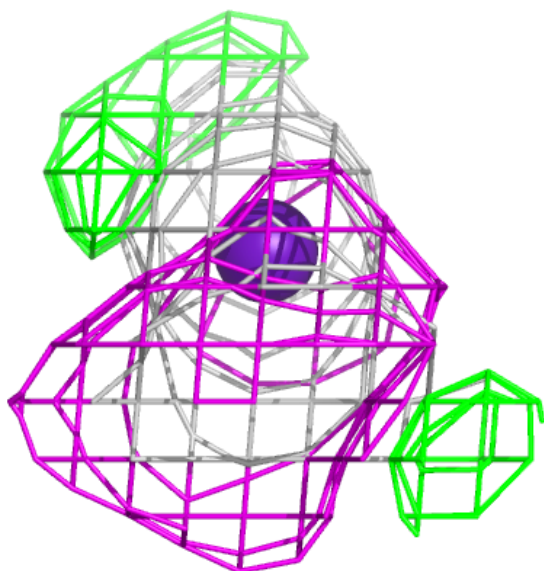
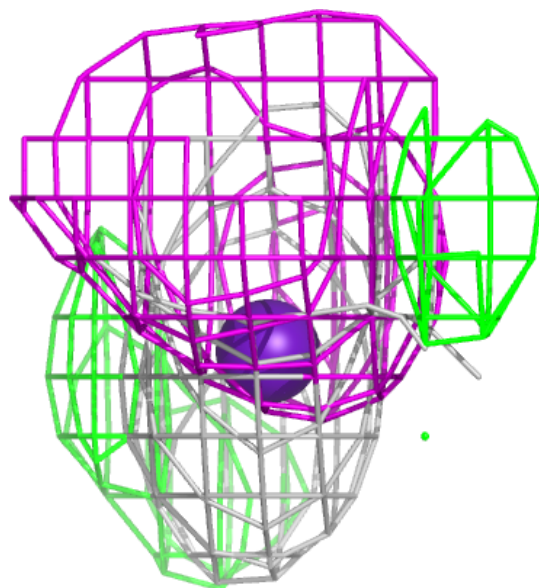
**Electron density around CS B 1402 (A):**

$2mF_o-DF_c$  (at 0.7 rmsd) in gray  
 $mF_o-DF_c$  (at 3 rmsd) in purple (negative)  
and green (positive)



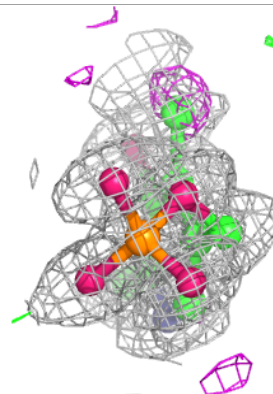
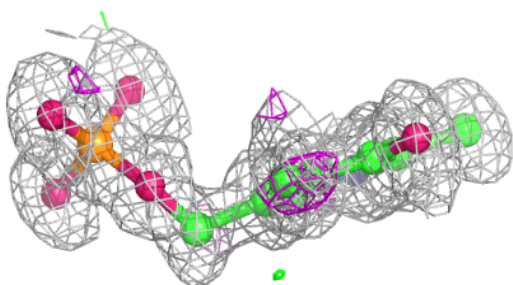
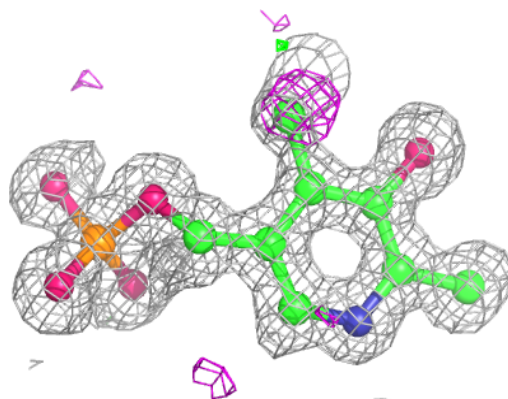
**Electron density around CS B 1402 (B):**

$2mF_o-DF_c$  (at 0.7 rmsd) in gray  
 $mF_o-DF_c$  (at 3 rmsd) in purple (negative)  
and green (positive)

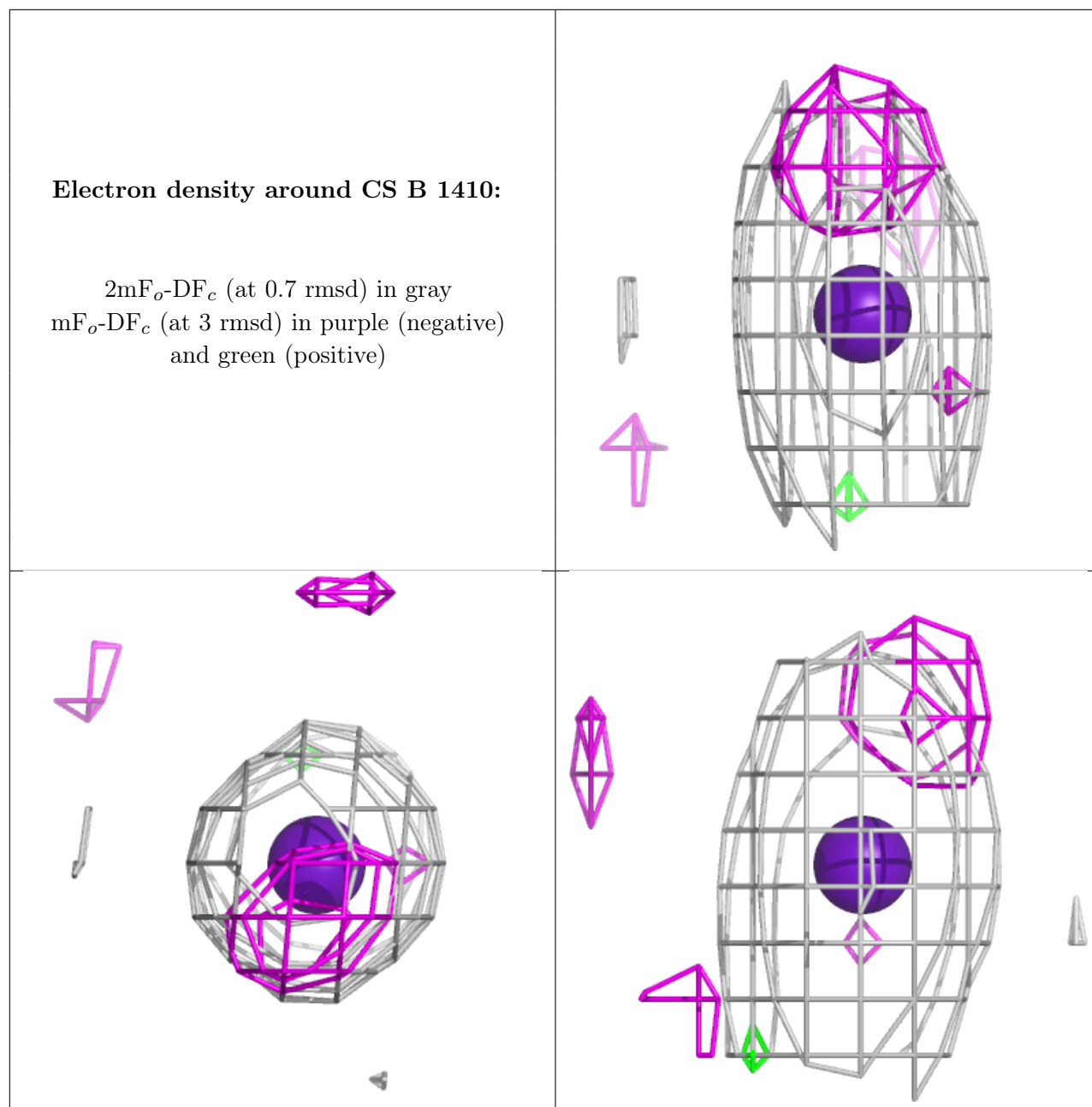


**Electron density around PLP B 1401:**

$2mF_o-DF_c$  (at 0.7 rmsd) in gray  
 $mF_o-DF_c$  (at 3 rmsd) in purple (negative)  
and green (positive)







## 6.5 Other polymers ⓘ

There are no such residues in this entry.