



Full wwPDB X-ray Structure Validation Report ⓘ

May 14, 2020 – 02:03 am BST

PDB ID : 5WYF
Title : Structure of amino acid racemase, 2.12 Å
Authors : Sakuraba, H.; Mutaguchi, Y.; Hayashi, J.; Ohshima, T.
Deposited on : 2017-01-12
Resolution : 2.12 Å(reported)

This is a Full wwPDB X-ray Structure Validation Report for a publicly released PDB entry.

We welcome your comments at validation@mail.wwpdb.org

A user guide is available at

<https://www.wwpdb.org/validation/2017/XrayValidationReportHelp>

with specific help available everywhere you see the ⓘ symbol.

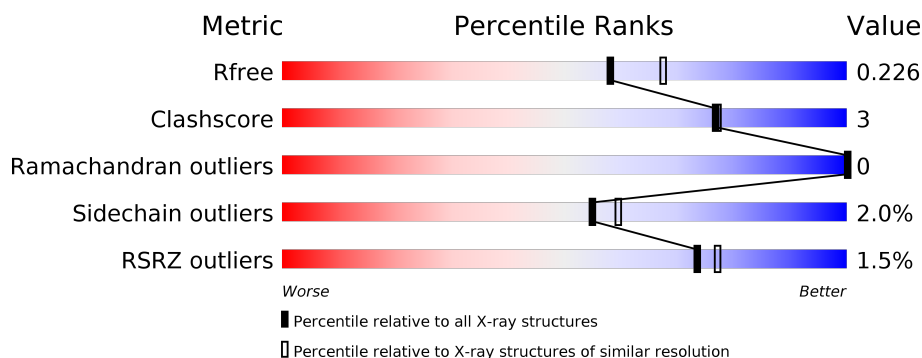
The following versions of software and data (see [references ⓘ](#)) were used in the production of this report:

MolProbity : 4.02b-467
Mogul : 1.8.5 (274361), CSD as541be (2020)
Xtriage (Phenix) : 1.13
EDS : 2.11
buster-report : 1.1.7 (2018)
Percentile statistics : 20191225.v01 (using entries in the PDB archive December 25th 2019)
Refmac : 5.8.0158
CCP4 : 7.0.044 (Gargrove)
Ideal geometry (proteins) : Engh & Huber (2001)
Ideal geometry (DNA, RNA) : Parkinson et al. (1996)
Validation Pipeline (wwPDB-VP) : 2.11

i

X-RAY DIFFRACTION

Percentile scores (ranging between 0-100) for global validation metrics of the entry are shown in the following graphic. The table shows the number of entries on which the scores are based.



Metric	Whole archive (#Entries)	Similar resolution (#Entries, resolution range(Å))
R_{free}	130704	6241 (2.14-2.10)
Clashscore	141614	6778 (2.14-2.10)
Ramachandran outliers	138981	6705 (2.14-2.10)
Sidechain outliers	138945	6706 (2.14-2.10)
RSRZ outliers	127900	6112 (2.14-2.10)

The table below summarises the geometric issues observed across the polymeric chains and their fit to the electron density. The red, orange, yellow and green segments on the lower bar indicate the fraction of residues that contain outliers for ≥ 3 , 2, 1 and 0 types of geometric quality criteria respectively. A grey segment represents the fraction of residues that are not modelled. The numeric value for each fraction is indicated below the corresponding segment, with a dot representing fractions $\leq 5\%$. The upper red bar (where present) indicates the fraction of residues that have poor fit to the electron density. The numeric value is given above the bar.

Mol	Chain	Length	Quality of chain
1	A	462	<div> <div></div> <div>88%</div> <div>8%</div> <div></div> </div>
1	B	462	<div> <div></div> <div>87%</div> <div>8%</div> <div></div> </div>
1	C	462	<div> <div></div> <div>90%</div> <div>6%</div> <div></div> </div>
1	D	462	<div> <div></div> <div>88%</div> <div>8%</div> <div></div> </div>

2 Entry composition [i](#)

There are 4 unique types of molecules in this entry. The entry contains 14327 atoms, of which 0 are hydrogens and 0 are deuteriums.

In the tables below, the ZeroOcc column contains the number of atoms modelled with zero occupancy, the AltConf column contains the number of residues with at least one atom in alternate conformation and the Trace column contains the number of residues modelled with at most 2 atoms.

- Molecule 1 is a protein called Isoleucine 2-epimerase.

Mol	Chain	Residues	Atoms					ZeroOcc	AltConf	Trace
1	A	446	Total	C	N	O	S	0	0	0
			3449	2199	579	654	17			
1	B	444	Total	C	N	O	S	0	0	0
			3437	2192	577	652	16			
1	C	446	Total	C	N	O	S	0	0	0
			3449	2199	579	654	17			
1	D	444	Total	C	N	O	S	0	0	0
			3437	2192	577	652	16			

There are 48 discrepancies between the modelled and reference sequences:

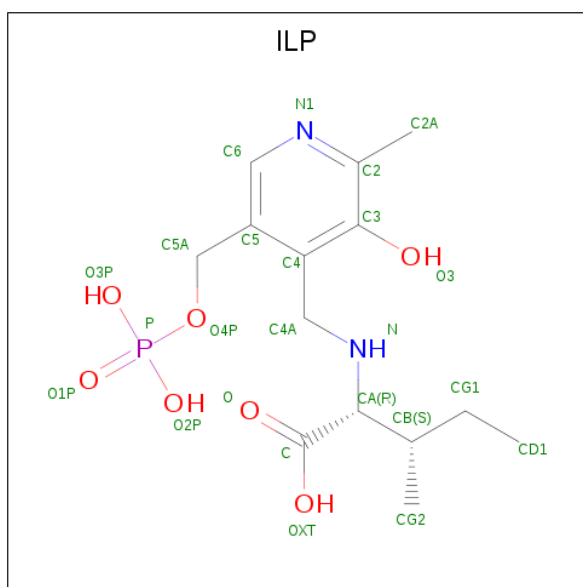
Chain	Residue	Modelled	Actual	Comment	Reference
A	-11	GLY	-	expression tag	UNP M1GRN3
A	-10	SER	-	expression tag	UNP M1GRN3
A	-9	GLY	-	expression tag	UNP M1GRN3
A	-8	GLY	-	expression tag	UNP M1GRN3
A	-7	ILE	-	expression tag	UNP M1GRN3
A	-6	GLU	-	expression tag	UNP M1GRN3
A	-5	GLY	-	expression tag	UNP M1GRN3
A	-4	ARG	-	expression tag	UNP M1GRN3
A	-3	HIS	-	expression tag	UNP M1GRN3
A	-2	MET	-	expression tag	UNP M1GRN3
A	-1	GLU	-	expression tag	UNP M1GRN3
A	0	LEU	-	expression tag	UNP M1GRN3
B	-11	GLY	-	expression tag	UNP M1GRN3
B	-10	SER	-	expression tag	UNP M1GRN3
B	-9	GLY	-	expression tag	UNP M1GRN3
B	-8	GLY	-	expression tag	UNP M1GRN3
B	-7	ILE	-	expression tag	UNP M1GRN3
B	-6	GLU	-	expression tag	UNP M1GRN3
B	-5	GLY	-	expression tag	UNP M1GRN3
B	-4	ARG	-	expression tag	UNP M1GRN3
B	-3	HIS	-	expression tag	UNP M1GRN3

Continued on next page...

Continued from previous page...

Chain	Residue	Modelled	Actual	Comment	Reference
B	-2	MET	-	expression tag	UNP M1GRN3
B	-1	GLU	-	expression tag	UNP M1GRN3
B	0	LEU	-	expression tag	UNP M1GRN3
C	-11	GLY	-	expression tag	UNP M1GRN3
C	-10	SER	-	expression tag	UNP M1GRN3
C	-9	GLY	-	expression tag	UNP M1GRN3
C	-8	GLY	-	expression tag	UNP M1GRN3
C	-7	ILE	-	expression tag	UNP M1GRN3
C	-6	GLU	-	expression tag	UNP M1GRN3
C	-5	GLY	-	expression tag	UNP M1GRN3
C	-4	ARG	-	expression tag	UNP M1GRN3
C	-3	HIS	-	expression tag	UNP M1GRN3
C	-2	MET	-	expression tag	UNP M1GRN3
C	-1	GLU	-	expression tag	UNP M1GRN3
C	0	LEU	-	expression tag	UNP M1GRN3
D	-11	GLY	-	expression tag	UNP M1GRN3
D	-10	SER	-	expression tag	UNP M1GRN3
D	-9	GLY	-	expression tag	UNP M1GRN3
D	-8	GLY	-	expression tag	UNP M1GRN3
D	-7	ILE	-	expression tag	UNP M1GRN3
D	-6	GLU	-	expression tag	UNP M1GRN3
D	-5	GLY	-	expression tag	UNP M1GRN3
D	-4	ARG	-	expression tag	UNP M1GRN3
D	-3	HIS	-	expression tag	UNP M1GRN3
D	-2	MET	-	expression tag	UNP M1GRN3
D	-1	GLU	-	expression tag	UNP M1GRN3
D	0	LEU	-	expression tag	UNP M1GRN3

- Molecule 2 is N-[O-PHOSPHONO-PYRIDOXYL]-ISOLEUCINE (three-letter code: ILP) (formula: C₁₄H₂₃N₂O₇P).



Mol	Chain	Residues	Atoms					ZeroOcc	AltConf
2	A	1	Total	C	N	O	P	0	0
			24	14	2	7	1		
2	B	1	Total	C	N	O	P	0	0
			24	14	2	7	1		
2	C	1	Total	C	N	O	P	0	0
			24	14	2	7	1		
2	D	1	Total	C	N	O	P	0	0
			24	14	2	7	1		

- Molecule 3 is CADMIUM ION (three-letter code: CD) (formula: Cd).

Mol	Chain	Residues	Atoms		ZeroOcc	AltConf
3	B	8	Total	Cd	0	0
			8	8		
3	A	10	Total	Cd	0	0
			10	10		
3	D	8	Total	Cd	0	0
			8	8		
3	C	10	Total	Cd	0	0
			10	10		

- Molecule 4 is water.

Mol	Chain	Residues	Atoms		ZeroOcc	AltConf
4	A	126	Total	O	0	0
			126	126		

Continued on next page...

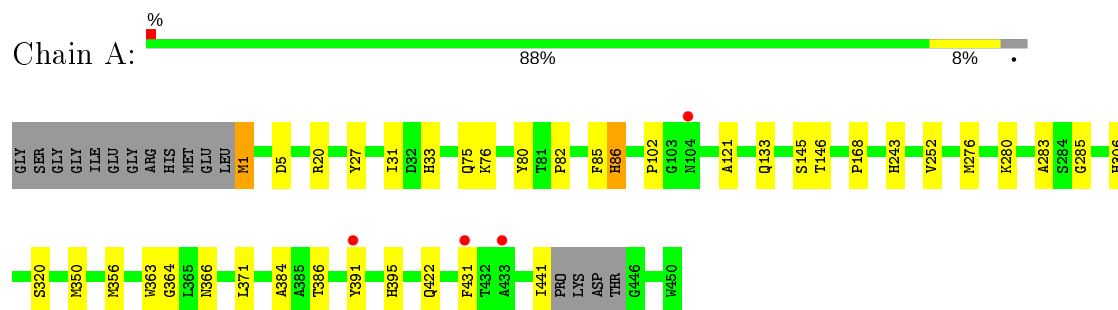
Continued from previous page...

Mol	Chain	Residues	Atoms		ZeroOcc	AltConf
4	B	119	Total 119	O 119	0	0
4	C	99	Total 99	O 99	0	0
4	D	79	Total 79	O 79	0	0

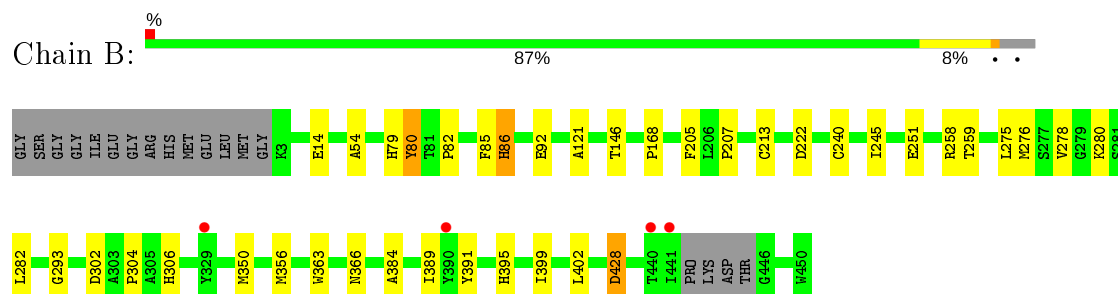
3 Residue-property plots [i](#)

These plots are drawn for all protein, RNA and DNA chains in the entry. The first graphic for a chain summarises the proportions of the various outlier classes displayed in the second graphic. The second graphic shows the sequence view annotated by issues in geometry and electron density. Residues are color-coded according to the number of geometric quality criteria for which they contain at least one outlier: green = 0, yellow = 1, orange = 2 and red = 3 or more. A red dot above a residue indicates a poor fit to the electron density ($RSRZ > 2$). Stretches of 2 or more consecutive residues without any outlier are shown as a green connector. Residues present in the sample, but not in the model, are shown in grey.

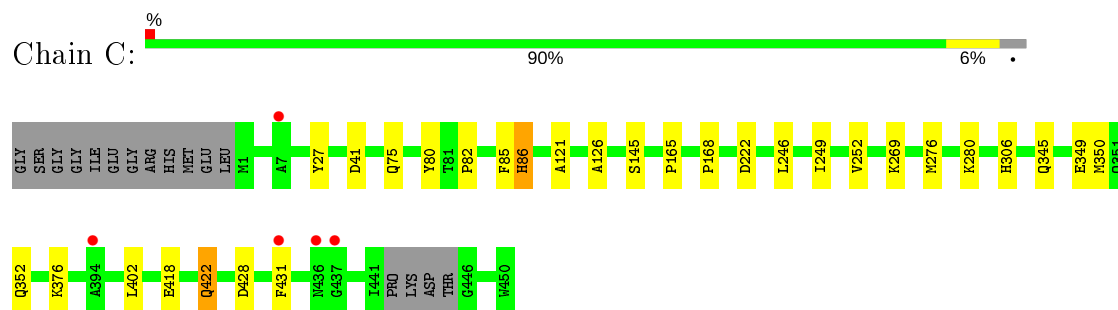
- Molecule 1: Isoleucine 2-epimerase



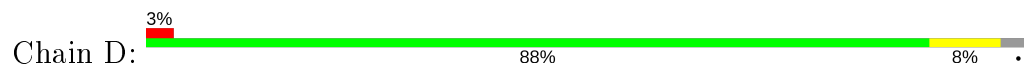
- Molecule 1: Isoleucine 2-epimerase

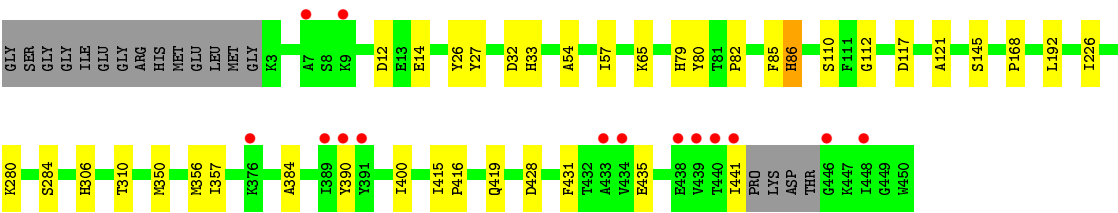


- Molecule 1: Isoleucine 2-epimerase



- Molecule 1: Isoleucine 2-epimerase





4 Data and refinement statistics

Property	Value	Source
Space group	P 1 21 1	Depositor
Cell constants a, b, c, α , β , γ	59.51Å 85.28Å 186.57Å 90.00° 96.93° 90.00°	Depositor
Resolution (Å)	50.00 – 2.12 50.01 – 2.12	Depositor EDS
% Data completeness (in resolution range)	99.2 (50.00-2.12) 99.2 (50.01-2.12)	Depositor EDS
R_{merge}	0.08	Depositor
R_{sym}	(Not available)	Depositor
$\langle I/\sigma(I) \rangle$ ¹	2.22 (at 2.12Å)	Xtriage
Refinement program	REFMAC 5.8.0158	Depositor
R, R_{free}	0.176 , 0.221 0.187 , 0.226	Depositor DCC
R_{free} test set	5270 reflections (5.06%)	wwPDB-VP
Wilson B-factor (Å ²)	32.1	Xtriage
Anisotropy	0.704	Xtriage
Bulk solvent k_{sol} (e/Å ³), B_{sol} (Å ²)	0.36 , 33.7	EDS
L-test for twinning ²	$\langle L \rangle = 0.49$, $\langle L^2 \rangle = 0.32$	Xtriage
Estimated twinning fraction	0.022 for h,-k,-h-l	Xtriage
F_o, F_c correlation	0.96	EDS
Total number of atoms	14327	wwPDB-VP
Average B, all atoms (Å ²)	38.0	wwPDB-VP

Xtriage's analysis on translational NCS is as follows: *The largest off-origin peak in the Patterson function is 6.96% of the height of the origin peak. No significant pseudotranslation is detected.*

¹Intensities estimated from amplitudes.

²Theoretical values of $\langle |L| \rangle$, $\langle L^2 \rangle$ for acentric reflections are 0.5, 0.333 respectively for untwinned datasets, and 0.375, 0.2 for perfectly twinned datasets.

5 Model quality [i](#)

5.1 Standard geometry [i](#)

Bond lengths and bond angles in the following residue types are not validated in this section: ILP, CD

The Z score for a bond length (or angle) is the number of standard deviations the observed value is removed from the expected value. A bond length (or angle) with $|Z| > 5$ is considered an outlier worth inspection. RMSZ is the root-mean-square of all Z scores of the bond lengths (or angles).

Mol	Chain	Bond lengths		Bond angles	
		RMSZ	# Z >5	RMSZ	# Z >5
1	A	0.78	0/3528	0.82	2/4779 (0.0%)
1	B	0.78	2/3516 (0.1%)	0.80	1/4764 (0.0%)
1	C	0.76	0/3528	0.81	1/4779 (0.0%)
1	D	0.71	0/3516	0.79	0/4764
All	All	0.76	2/14088 (0.0%)	0.81	4/19086 (0.0%)

All (2) bond length outliers are listed below:

Mol	Chain	Res	Type	Atoms	Z	Observed(Å)	Ideal(Å)
1	B	304	PRO	N-CA	-5.80	1.37	1.47
1	B	92	GLU	CD-OE1	5.09	1.31	1.25

All (4) bond angle outliers are listed below:

Mol	Chain	Res	Type	Atoms	Z	Observed(°)	Ideal(°)
1	A	5	ASP	CB-CG-OD1	5.77	123.49	118.30
1	A	1	MET	CG-SD-CE	5.39	108.82	100.20
1	B	428	ASP	CB-CG-OD2	-5.35	113.49	118.30
1	C	41	ASP	CB-CG-OD2	-5.06	113.74	118.30

There are no chirality outliers.

There are no planarity outliers.

5.2 Too-close contacts [i](#)

In the following table, the Non-H and H(model) columns list the number of non-hydrogen atoms and hydrogen atoms in the chain respectively. The H(added) column lists the number of hydrogen atoms added and optimized by MolProbity. The Clashes column lists the number of clashes within the asymmetric unit, whereas Symm-Clashes lists symmetry related clashes.

Mol	Chain	Non-H	H(model)	H(added)	Clashes	Symm-Clashes
1	A	3449	0	3414	30	0
1	B	3437	0	3399	25	0
1	C	3449	0	3414	15	0
1	D	3437	0	3399	21	0
2	A	24	0	19	1	0
2	B	24	0	20	0	0
2	C	24	0	20	1	0
2	D	24	0	20	1	0
3	A	10	0	0	0	0
3	B	8	0	0	0	0
3	C	10	0	0	0	0
3	D	8	0	0	0	0
4	A	126	0	0	6	0
4	B	119	0	0	1	0
4	C	99	0	0	1	0
4	D	79	0	0	0	0
All	All	14327	0	13705	84	0

The all-atom clashscore is defined as the number of clashes found per 1000 atoms (including hydrogen atoms). The all-atom clashscore for this structure is 3.

All (84) close contacts within the same asymmetric unit are listed below, sorted by their clash magnitude.

Atom-1	Atom-2	Interatomic distance (Å)	Clash overlap (Å)
1:D:82:PRO:HA	1:D:85:PHE:O	1.78	0.83
1:B:82:PRO:HA	1:B:85:PHE:O	1.91	0.71
1:A:82:PRO:HA	1:A:85:PHE:O	1.92	0.70
1:C:82:PRO:HA	1:C:85:PHE:O	1.92	0.69
1:A:356:MET:CE	1:A:371:LEU:HD13	2.23	0.68
1:A:33:HIS:HD2	4:A:1219:HOH:O	1.78	0.66
1:D:350:MET:HE3	1:D:428:ASP:HA	1.79	0.64
1:A:356:MET:HE2	1:A:371:LEU:HD13	1.80	0.64
1:C:121:ALA:HB2	1:C:306:HIS:CE1	2.32	0.64
1:A:356:MET:HE1	1:A:384:ALA:HB1	1.80	0.63
1:A:31:ILE:HD13	1:B:80:TYR:CD2	2.35	0.62
1:A:33:HIS:CD2	4:A:1219:HOH:O	2.53	0.61
1:D:431:PHE:O	1:D:435:GLU:HG3	1.99	0.61
4:A:1135:HOH:O	1:B:86:HIS:HB3	2.01	0.60
1:B:258:ARG:CD	1:B:366:ASN:HB2	2.33	0.58
1:D:121:ALA:HB2	1:D:306:HIS:CE1	2.38	0.58
1:B:389:ILE:HG22	1:B:399:ILE:HG23	1.86	0.57
1:D:356:MET:CE	1:D:384:ALA:HB1	2.36	0.56

Continued on next page...

Continued from previous page...

Atom-1	Atom-2	Interatomic distance (Å)	Clash overlap (Å)
1:A:356:MET:CE	1:A:384:ALA:HB1	2.37	0.55
1:C:269:LYS:NZ	4:C:1102:HOH:O	2.39	0.55
1:B:86:HIS:CD2	1:B:86:HIS:N	2.76	0.53
1:D:54:ALA:O	1:D:280:LYS:HD3	2.08	0.53
1:A:350:MET:CE	1:A:431:PHE:CE2	2.93	0.52
1:C:86:HIS:N	1:C:86:HIS:CD2	2.78	0.52
1:A:243:HIS:HD2	4:A:1224:HOH:O	1.92	0.52
2:D:1001:ILP:N	2:D:1001:ILP:O3	2.42	0.51
1:A:350:MET:CE	1:A:431:PHE:CD2	2.94	0.50
1:A:121:ALA:HB2	1:A:306:HIS:CE1	2.46	0.49
1:C:168:PRO:HG3	1:D:168:PRO:HG3	1.94	0.49
1:A:75:GLN:NE2	4:A:1105:HOH:O	2.40	0.49
1:B:350:MET:HE3	1:B:428:ASP:HA	1.95	0.48
1:C:249:ILE:O	1:C:276:MET:HA	2.13	0.48
1:A:356:MET:HE3	1:A:371:LEU:HD13	1.95	0.48
2:C:1001:ILP:O3	2:C:1001:ILP:N	2.45	0.48
1:B:240:CYS:HB3	1:B:245:ILE:O	2.13	0.48
1:B:258:ARG:HD2	1:B:366:ASN:HB2	1.96	0.48
1:B:121:ALA:HB2	1:B:306:HIS:CE1	2.48	0.47
1:A:252:VAL:HG12	1:A:280:LYS:HD2	1.95	0.47
1:C:418:GLU:OE2	1:C:422:GLN:NE2	2.46	0.47
1:C:86:HIS:ND1	1:D:14:GLU:OE1	2.38	0.47
1:A:363:TRP:O	1:A:366:ASN:HB3	2.14	0.47
1:B:222:ASP:HA	1:B:402:LEU:HD22	1.95	0.46
1:A:386:THR:HG22	1:A:441:ILE:HG21	1.98	0.45
1:B:356:MET:CE	1:B:384:ALA:HB1	2.47	0.45
1:D:350:MET:HE2	1:D:431:PHE:CD2	2.52	0.45
1:C:222:ASP:HA	1:C:402:LEU:HD22	1.98	0.45
1:D:350:MET:HE2	1:D:431:PHE:CE2	2.52	0.45
1:D:57:ILE:O	1:D:57:ILE:HG22	2.17	0.45
1:A:102:PRO:HD2	1:A:276:MET:SD	2.57	0.44
1:B:205:PHE:O	1:B:207:PRO:HD3	2.17	0.44
1:A:86:HIS:ND1	1:B:14:GLU:OE1	2.44	0.44
1:D:357:ILE:HD11	1:D:431:PHE:CE2	2.53	0.44
1:A:285:GLY:HA3	1:B:79:HIS:HB3	2.00	0.43
1:A:86:HIS:CD2	1:A:86:HIS:N	2.85	0.43
1:A:168:PRO:HG3	1:B:168:PRO:HG3	2.00	0.43
2:A:1001:ILP:O3	2:A:1001:ILP:N	2.51	0.43
1:B:302:ASP:OD2	4:B:1101:HOH:O	2.21	0.43
1:A:133:GLN:HE22	1:C:165:PRO:HA	1.84	0.43
1:D:32:ASP:OD2	1:D:33:HIS:ND1	2.38	0.43

Continued on next page...

Continued from previous page...

Atom-1	Atom-2	Interatomic distance (Å)	Clash overlap (Å)
1:A:350:MET:HE2	1:A:431:PHE:CE2	2.53	0.43
1:C:350:MET:HE3	1:C:428:ASP:N	2.34	0.42
1:A:422:GLN:NE2	4:A:1103:HOH:O	2.34	0.42
1:D:86:HIS:CD2	1:D:86:HIS:N	2.86	0.42
1:D:416:PRO:HD2	1:D:419:GLN:OE1	2.20	0.42
1:B:251:GLU:HG3	1:B:276:MET:HE3	2.01	0.42
1:B:54:ALA:O	1:B:280:LYS:HD3	2.20	0.42
1:A:146:THR:HG21	1:B:146:THR:HG21	2.01	0.42
1:B:275:LEU:HD23	1:B:293:GLY:HA3	2.02	0.42
1:D:26:TYR:CE1	1:D:400:ILE:HB	2.55	0.42
1:D:57:ILE:CD1	1:D:284:SER:O	2.68	0.41
1:D:79:HIS:CE1	1:D:310:THR:HA	2.55	0.41
1:C:27:TYR:CE1	1:D:85:PHE:CE1	3.08	0.41
1:A:364:GLY:C	1:A:366:ASN:H	2.23	0.41
1:A:20:ARG:NH2	1:B:302:ASP:OD1	2.47	0.41
1:C:126:ALA:HA	1:C:246:LEU:HD12	2.02	0.41
1:D:112:GLY:HA3	1:D:117:ASP:OD1	2.20	0.41
1:B:259:THR:HA	1:B:363:TRP:O	2.20	0.41
1:A:283:ALA:HB2	1:A:320:SER:HB2	2.01	0.41
1:B:278:VAL:HG12	1:B:282:LEU:HD22	2.03	0.40
1:C:252:VAL:HG12	1:C:280:LYS:HD2	2.02	0.40
1:D:415:ILE:O	1:D:415:ILE:HG23	2.21	0.40
1:B:391:TYR:CE2	1:B:395:HIS:CE1	3.10	0.40
1:C:350:MET:HE1	1:C:431:PHE:HE2	1.85	0.40
1:A:391:TYR:CE2	1:A:395:HIS:CE1	3.10	0.40

There are no symmetry-related clashes.

5.3 Torsion angles ⓘ

5.3.1 Protein backbone ⓘ

In the following table, the Percentiles column shows the percent Ramachandran outliers of the chain as a percentile score with respect to all X-ray entries followed by that with respect to entries of similar resolution.

The Analysed column shows the number of residues for which the backbone conformation was analysed, and the total number of residues.

Mol	Chain	Analysed	Favoured	Allowed	Outliers	Percentiles	
1	A	442/462 (96%)	429 (97%)	13 (3%)	0	100	100

Continued on next page...

Continued from previous page...

Mol	Chain	Analysed	Favoured	Allowed	Outliers	Percentiles	
1	B	440/462 (95%)	425 (97%)	15 (3%)	0	100	100
1	C	442/462 (96%)	426 (96%)	16 (4%)	0	100	100
1	D	440/462 (95%)	419 (95%)	21 (5%)	0	100	100
All	All	1764/1848 (96%)	1699 (96%)	65 (4%)	0	100	100

There are no Ramachandran outliers to report.

5.3.2 Protein sidechains ⓘ

In the following table, the Percentiles column shows the percent sidechain outliers of the chain as a percentile score with respect to all X-ray entries followed by that with respect to entries of similar resolution.

The Analysed column shows the number of residues for which the sidechain conformation was analysed, and the total number of residues.

Mol	Chain	Analysed	Rotameric	Outliers	Percentiles	
1	A	367/379 (97%)	361 (98%)	6 (2%)	62	68
1	B	366/379 (97%)	363 (99%)	3 (1%)	81	86
1	C	367/379 (97%)	358 (98%)	9 (2%)	47	50
1	D	366/379 (97%)	355 (97%)	11 (3%)	41	43
All	All	1466/1516 (97%)	1437 (98%)	29 (2%)	55	59

All (29) residues with a non-rotameric sidechain are listed below:

Mol	Chain	Res	Type
1	A	1	MET
1	A	27	TYR
1	A	76	LYS
1	A	80	TYR
1	A	86	HIS
1	A	145	SER
1	B	80	TYR
1	B	86	HIS
1	B	213	CYS
1	C	75	GLN
1	C	80	TYR
1	C	86	HIS
1	C	145	SER

Continued on next page...

Continued from previous page...

Mol	Chain	Res	Type
1	C	345	GLN
1	C	349	GLU
1	C	352	GLN
1	C	376	LYS
1	C	422	GLN
1	D	12	ASP
1	D	27	TYR
1	D	65	LYS
1	D	80	TYR
1	D	86	HIS
1	D	110	SER
1	D	145	SER
1	D	192	LEU
1	D	226	ILE
1	D	390	TYR
1	D	441	ILE

Some sidechains can be flipped to improve hydrogen bonding and reduce clashes. All (3) such sidechains are listed below:

Mol	Chain	Res	Type
1	A	104	ASN
1	A	133	GLN
1	C	352	GLN

5.3.3 RNA [i](#)

There are no RNA molecules in this entry.

5.4 Non-standard residues in protein, DNA, RNA chains [i](#)

There are no non-standard protein/DNA/RNA residues in this entry.

5.5 Carbohydrates [i](#)

There are no carbohydrates in this entry.

5.6 Ligand geometry [i](#)

Of 40 ligands modelled in this entry, 36 are monoatomic - leaving 4 for Mogul analysis.

In the following table, the Counts columns list the number of bonds (or angles) for which Mogul statistics could be retrieved, the number of bonds (or angles) that are observed in the model and the number of bonds (or angles) that are defined in the Chemical Component Dictionary. The Link column lists molecule types, if any, to which the group is linked. The Z score for a bond length (or angle) is the number of standard deviations the observed value is removed from the expected value. A bond length (or angle) with $|Z| > 2$ is considered an outlier worth inspection. RMSZ is the root-mean-square of all Z scores of the bond lengths (or angles).

Mol	Type	Chain	Res	Link	Bond lengths			Bond angles		
					Counts	RMSZ	# $ Z > 2$	Counts	RMSZ	# $ Z > 2$
2	ILP	B	1001	-	21,24,24	2.31	5 (23%)	26,34,34	2.01	10 (38%)
2	ILP	A	1001	-	21,24,24	1.97	5 (23%)	26,34,34	2.31	9 (34%)
2	ILP	D	1001	-	21,24,24	2.39	4 (19%)	26,34,34	2.37	10 (38%)
2	ILP	C	1001	-	21,24,24	2.03	3 (14%)	26,34,34	2.47	9 (34%)

In the following table, the Chirals column lists the number of chiral outliers, the number of chiral centers analysed, the number of these observed in the model and the number defined in the Chemical Component Dictionary. Similar counts are reported in the Torsion and Rings columns. '-' means no outliers of that kind were identified.

Mol	Type	Chain	Res	Link	Chirals	Torsions	Rings
2	ILP	B	1001	-	-	6/17/21/21	0/1/1/1
2	ILP	A	1001	-	-	8/17/21/21	0/1/1/1
2	ILP	D	1001	-	-	8/17/21/21	0/1/1/1
2	ILP	C	1001	-	-	8/17/21/21	0/1/1/1

All (17) bond length outliers are listed below:

Mol	Chain	Res	Type	Atoms	Z	Observed(Å)	Ideal(Å)
2	D	1001	ILP	C4A-C4	-7.66	1.42	1.51
2	B	1001	ILP	C4A-C4	-7.22	1.42	1.51
2	C	1001	ILP	C4A-C4	-6.42	1.43	1.51
2	A	1001	ILP	C4A-C4	-5.97	1.44	1.51
2	D	1001	ILP	C2A-C2	-5.55	1.41	1.50
2	B	1001	ILP	C5-C4	3.82	1.45	1.40
2	B	1001	ILP	C6-N1	3.75	1.42	1.34
2	C	1001	ILP	C2A-C2	-3.74	1.44	1.50
2	A	1001	ILP	C2A-C2	-3.34	1.44	1.50
2	D	1001	ILP	C6-N1	2.86	1.40	1.34
2	A	1001	ILP	P-O4P	2.41	1.68	1.60
2	C	1001	ILP	C5A-C5	-2.29	1.44	1.50
2	B	1001	ILP	C2A-C2	-2.29	1.46	1.50
2	B	1001	ILP	P-O3P	-2.27	1.46	1.54

Continued on next page...

Continued from previous page...

Mol	Chain	Res	Type	Atoms	Z	Observed(Å)	Ideal(Å)
2	D	1001	ILP	P-O4P	2.13	1.67	1.60
2	A	1001	ILP	CA-N	2.04	1.51	1.47
2	A	1001	ILP	C6-N1	2.02	1.38	1.34

All (38) bond angle outliers are listed below:

Mol	Chain	Res	Type	Atoms	Z	Observed(°)	Ideal(°)
2	C	1001	ILP	C4A-N-CA	8.38	125.39	113.78
2	D	1001	ILP	C4A-N-CA	6.60	122.92	113.78
2	A	1001	ILP	C4A-C4-C3	5.86	126.32	120.04
2	D	1001	ILP	C4A-C4-C3	4.33	124.68	120.04
2	C	1001	ILP	C4A-C4-C3	4.13	124.46	120.04
2	B	1001	ILP	C4A-N-CA	4.13	119.50	113.78
2	A	1001	ILP	C4A-N-CA	4.10	119.46	113.78
2	D	1001	ILP	C2A-C2-C3	3.95	125.77	120.89
2	B	1001	ILP	C4A-C4-C3	3.71	124.02	120.04
2	A	1001	ILP	C4-C3-C2	3.65	125.66	120.06
2	A	1001	ILP	O3P-P-O4P	-3.63	97.06	106.73
2	A	1001	ILP	C3-C4-C5	-3.36	115.49	118.72
2	B	1001	ILP	O3P-P-O4P	-3.36	97.79	106.73
2	D	1001	ILP	O3P-P-O4P	-3.33	97.88	106.73
2	A	1001	ILP	O3P-P-O2P	3.12	119.56	107.64
2	C	1001	ILP	O3P-P-O4P	-3.11	98.45	106.73
2	B	1001	ILP	C2A-C2-C3	3.01	124.61	120.89
2	A	1001	ILP	C3-C2-N1	-2.89	117.03	120.77
2	A	1001	ILP	C2A-C2-C3	2.87	124.43	120.89
2	C	1001	ILP	C6-C5-C4	2.80	120.10	118.12
2	D	1001	ILP	O4P-P-O1P	-2.72	98.85	106.47
2	D	1001	ILP	C3-C2-N1	-2.70	117.27	120.77
2	C	1001	ILP	C5-C6-N1	-2.58	119.53	123.82
2	D	1001	ILP	O3P-P-O2P	2.57	117.47	107.64
2	C	1001	ILP	O4P-P-O1P	-2.57	99.27	106.47
2	D	1001	ILP	O2P-P-O4P	-2.50	100.08	106.73
2	D	1001	ILP	C4-C3-C2	2.43	123.79	120.06
2	B	1001	ILP	O3P-P-O2P	2.43	116.92	107.64
2	B	1001	ILP	C3-C2-N1	-2.41	117.66	120.77
2	B	1001	ILP	O2P-P-O4P	-2.40	100.35	106.73
2	C	1001	ILP	O3P-P-O2P	2.38	116.72	107.64
2	D	1001	ILP	O3P-P-O1P	2.30	119.67	110.68
2	B	1001	ILP	C4-C4A-N	2.19	117.81	111.78
2	B	1001	ILP	C6-N1-C2	2.16	123.17	119.17
2	C	1001	ILP	C6-N1-C2	2.14	123.14	119.17

Continued on next page...

Continued from previous page...

Mol	Chain	Res	Type	Atoms	Z	Observed(°)	Ideal(°)
2	B	1001	ILP	C5-C6-N1	-2.14	120.26	123.82
2	C	1001	ILP	C3-C2-N1	-2.11	118.04	120.77
2	A	1001	ILP	O2P-P-O4P	-2.07	101.22	106.73

There are no chirality outliers.

All (30) torsion outliers are listed below:

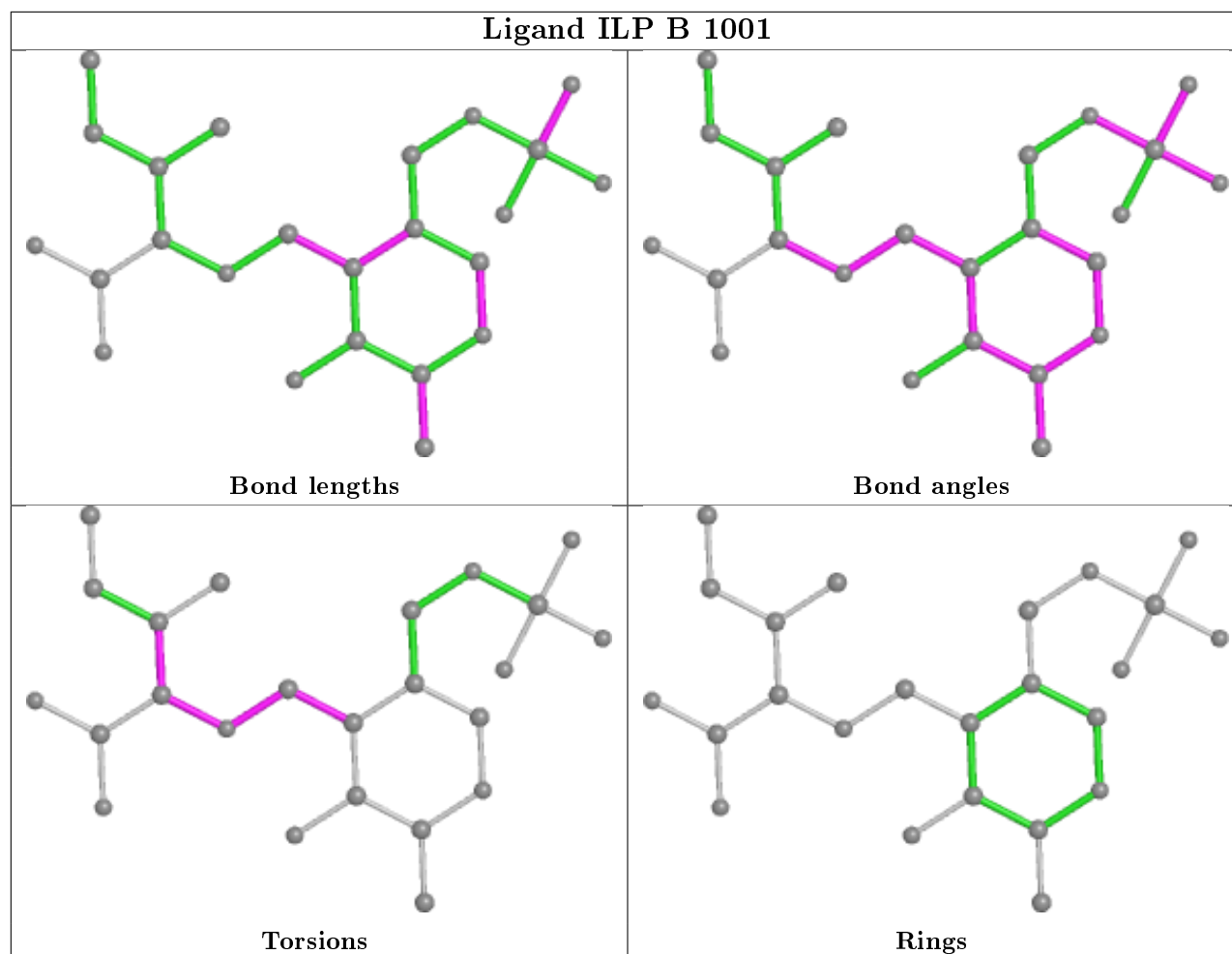
Mol	Chain	Res	Type	Atoms
2	A	1001	ILP	C5-C4-C4A-N
2	A	1001	ILP	CB-CA-N-C4A
2	D	1001	ILP	C5-C4-C4A-N
2	D	1001	ILP	CB-CA-N-C4A
2	C	1001	ILP	C5-C4-C4A-N
2	C	1001	ILP	CB-CA-N-C4A
2	B	1001	ILP	C5-C4-C4A-N
2	B	1001	ILP	CB-CA-N-C4A
2	B	1001	ILP	C4-C4A-N-CA
2	C	1001	ILP	N-CA-CB-CG2
2	B	1001	ILP	C3-C4-C4A-N
2	C	1001	ILP	N-CA-CB-CG1
2	D	1001	ILP	N-CA-CB-CG2
2	A	1001	ILP	N-CA-CB-CG1
2	D	1001	ILP	N-CA-CB-CG1
2	A	1001	ILP	C-CA-CB-CG2
2	D	1001	ILP	C-CA-CB-CG2
2	B	1001	ILP	C-CA-CB-CG2
2	A	1001	ILP	C4-C4A-N-CA
2	C	1001	ILP	C4-C4A-N-CA
2	A	1001	ILP	N-CA-CB-CG2
2	C	1001	ILP	C-CA-CB-CG2
2	A	1001	ILP	C-CA-N-C4A
2	D	1001	ILP	C-CA-N-C4A
2	C	1001	ILP	C-CA-N-C4A
2	B	1001	ILP	C-CA-N-C4A
2	D	1001	ILP	C4-C4A-N-CA
2	A	1001	ILP	C3-C4-C4A-N
2	D	1001	ILP	C3-C4-C4A-N
2	C	1001	ILP	C3-C4-C4A-N

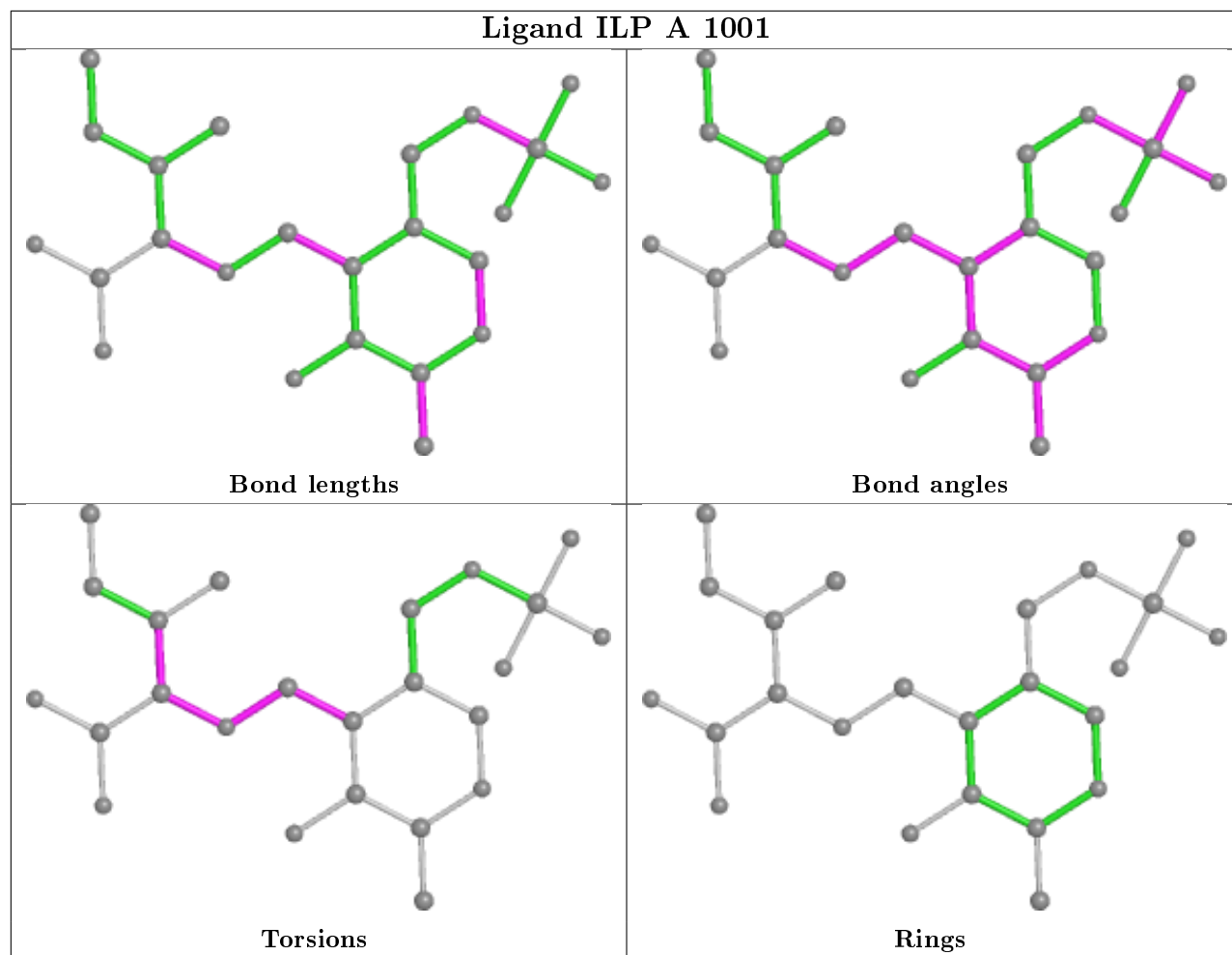
There are no ring outliers.

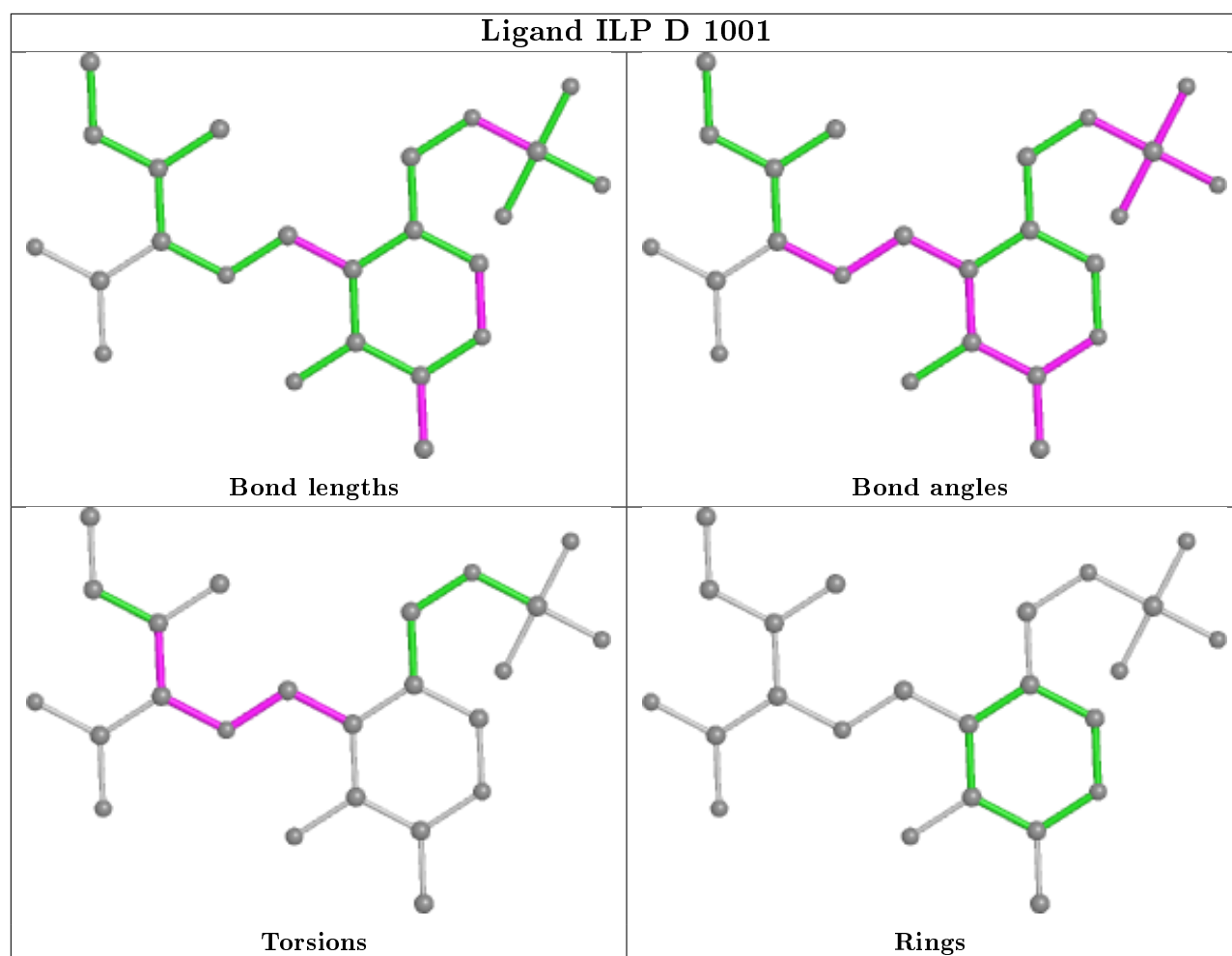
3 monomers are involved in 3 short contacts:

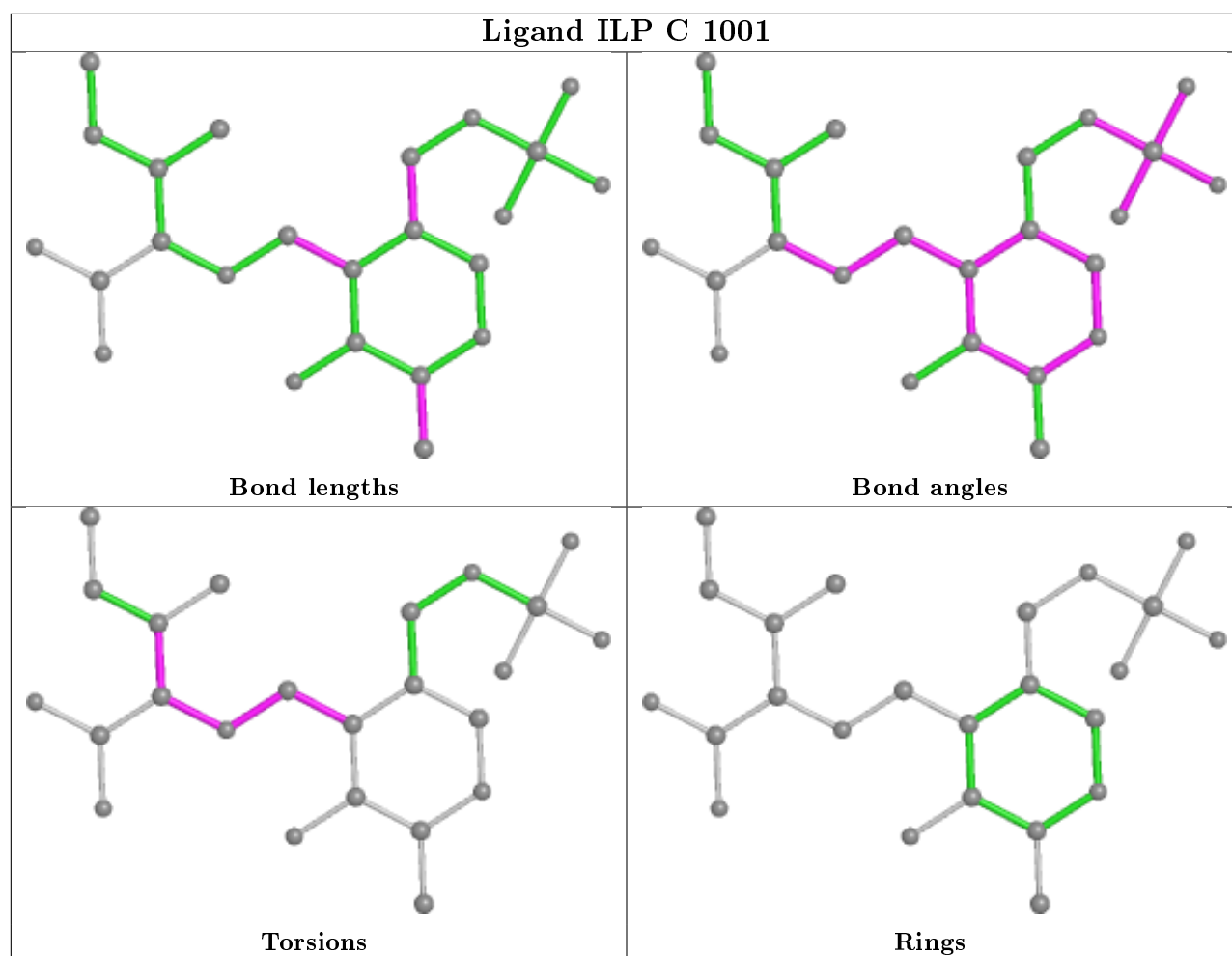
Mol	Chain	Res	Type	Clashes	Symm-Clashes
2	A	1001	ILP	1	0
2	D	1001	ILP	1	0
2	C	1001	ILP	1	0

The following is a two-dimensional graphical depiction of Mogul quality analysis of bond lengths, bond angles, torsion angles, and ring geometry for all instances of the Ligand of Interest. In addition, ligands with molecular weight > 250 and outliers as shown on the validation Tables will also be included. For torsion angles, if less than 5% of the Mogul distribution of torsion angles is within 10 degrees of the torsion angle in question, then that torsion angle is considered an outlier. Any bond that is central to one or more torsion angles identified as an outlier by Mogul will be highlighted in the graph. For rings, the root-mean-square deviation (RMSD) between the ring in question and similar rings identified by Mogul is calculated over all ring torsion angles. If the average RMSD is greater than 60 degrees and the minimal RMSD between the ring in question and any Mogul-identified rings is also greater than 60 degrees, then that ring is considered an outlier. The outliers are highlighted in purple. The color gray indicates Mogul did not find sufficient equivalents in the CSD to analyse the geometry.









5.7 Other polymers [i](#)

There are no such residues in this entry.

5.8 Polymer linkage issues [i](#)

There are no chain breaks in this entry.

6 Fit of model and data ⓘ

6.1 Protein, DNA and RNA chains ⓘ

In the following table, the column labelled ‘#RSRZ> 2’ contains the number (and percentage) of RSRZ outliers, followed by percent RSRZ outliers for the chain as percentile scores relative to all X-ray entries and entries of similar resolution. The OWAB column contains the minimum, median, 95th percentile and maximum values of the occupancy-weighted average B-factor per residue. The column labelled ‘Q< 0.9’ lists the number of (and percentage) of residues with an average occupancy less than 0.9.

Mol	Chain	Analysed	<RSRZ>	#RSRZ>2	OWAB(Å ²)	Q<0.9
1	A	446/462 (96%)	-0.07	4 (0%) 84 86	23, 32, 48, 75	0
1	B	444/462 (96%)	-0.24	4 (0%) 84 86	22, 34, 50, 84	0
1	C	446/462 (96%)	-0.03	5 (1%) 80 84	24, 38, 54, 76	0
1	D	444/462 (96%)	0.02	14 (3%) 47 54	22, 41, 62, 87	0
All	All	1780/1848 (96%)	-0.08	27 (1%) 73 77	22, 36, 55, 87	0

All (27) RSRZ outliers are listed below:

Mol	Chain	Res	Type	RSRZ
1	D	440	THR	5.7
1	D	439	VAL	4.3
1	B	440	THR	3.7
1	C	431	PHE	3.4
1	D	438	GLU	3.3
1	D	434	VAL	3.3
1	D	390	TYR	3.0
1	C	394	ALA	3.0
1	B	329	TYR	2.9
1	B	441	ILE	2.9
1	D	446	GLY	2.8
1	D	391	TYR	2.8
1	D	448	ILE	2.7
1	C	436	ASN	2.7
1	C	7	ALA	2.7
1	C	437	GLY	2.5
1	D	9	LYS	2.4
1	D	376	LYS	2.4
1	D	433	ALA	2.3
1	B	390	TYR	2.3
1	D	389	ILE	2.3

Continued on next page...

Continued from previous page...

Mol	Chain	Res	Type	RSRZ
1	A	431	PHE	2.3
1	A	433	ALA	2.2
1	A	104	ASN	2.2
1	D	441	ILE	2.1
1	D	7	ALA	2.1
1	A	391	TYR	2.1

6.2 Non-standard residues in protein, DNA, RNA chains [i](#)

There are no non-standard protein/DNA/RNA residues in this entry.

6.3 Carbohydrates [i](#)

There are no carbohydrates in this entry.

6.4 Ligands [i](#)

In the following table, the Atoms column lists the number of modelled atoms in the group and the number defined in the chemical component dictionary. The B-factors column lists the minimum, median, 95th percentile and maximum values of B factors of atoms in the group. The column labelled 'Q<0.9' lists the number of atoms with occupancy less than 0.9.

Mol	Type	Chain	Res	Atoms	RSCC	RSR	B-factors(\AA^2)	Q<0.9
3	CD	B	1007	1/1	0.80	0.16	52,52,52,52	0
3	CD	D	1004	1/1	0.80	0.07	62,62,62,62	0
3	CD	C	1004	1/1	0.89	0.08	55,55,55,55	0
3	CD	B	1005	1/1	0.90	0.06	55,55,55,55	0
3	CD	B	1009	1/1	0.91	0.04	110,110,110,110	0
3	CD	D	1002	1/1	0.92	0.09	64,64,64,64	0
3	CD	C	1003	1/1	0.93	0.07	61,61,61,61	0
3	CD	C	1002	1/1	0.94	0.04	69,69,69,69	0
3	CD	D	1006	1/1	0.94	0.03	69,69,69,69	0
3	CD	C	1009	1/1	0.94	0.06	55,55,55,55	0
3	CD	D	1003	1/1	0.95	0.06	60,60,60,60	0
3	CD	B	1002	1/1	0.95	0.07	97,97,97,97	0
3	CD	A	1011	1/1	0.95	0.03	71,71,71,71	0
3	CD	D	1008	1/1	0.96	0.07	62,62,62,62	0
3	CD	B	1006	1/1	0.96	0.08	56,56,56,56	0
3	CD	C	1011	1/1	0.96	0.02	107,107,107,107	0
3	CD	A	1007	1/1	0.97	0.04	62,62,62,62	0

Continued on next page...

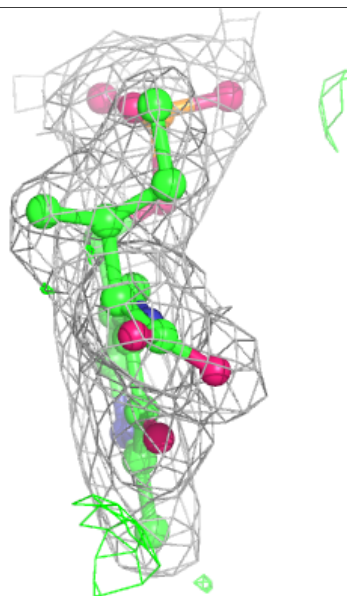
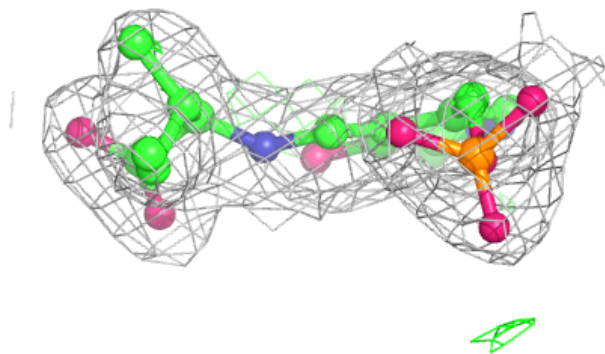
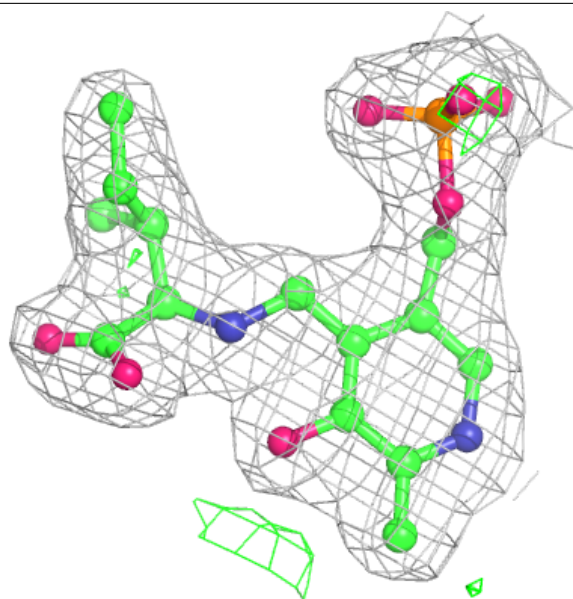
Continued from previous page...

Mol	Type	Chain	Res	Atoms	RSCC	RSR	B-factors(\AA^2)	Q<0.9
3	CD	C	1010	1/1	0.97	0.04	80,80,80,80	0
3	CD	A	1003	1/1	0.97	0.03	61,61,61,61	0
3	CD	C	1005	1/1	0.97	0.08	41,41,41,41	0
2	ILP	D	1001	24/24	0.97	0.12	27,32,39,40	0
3	CD	D	1007	1/1	0.97	0.05	83,83,83,83	0
3	CD	C	1008	1/1	0.98	0.03	76,76,76,76	0
3	CD	C	1006	1/1	0.98	0.05	62,62,62,62	0
3	CD	B	1004	1/1	0.98	0.09	50,50,50,50	0
3	CD	A	1009	1/1	0.98	0.02	69,69,69,69	0
2	ILP	A	1001	24/24	0.98	0.12	23,27,32,35	0
2	ILP	B	1001	24/24	0.98	0.11	25,29,31,34	0
3	CD	A	1004	1/1	0.98	0.07	46,46,46,46	0
2	ILP	C	1001	24/24	0.98	0.12	26,32,39,39	0
3	CD	C	1007	1/1	0.98	0.03	63,63,63,63	0
3	CD	A	1005	1/1	0.98	0.08	41,41,41,41	0
3	CD	A	1010	1/1	0.98	0.05	51,51,51,51	0
3	CD	D	1009	1/1	0.98	0.04	89,89,89,89	0
3	CD	A	1008	1/1	0.99	0.03	53,53,53,53	0
3	CD	A	1006	1/1	0.99	0.07	48,48,48,48	0
3	CD	A	1002	1/1	0.99	0.07	40,40,40,40	0
3	CD	D	1005	1/1	0.99	0.10	57,57,57,57	0
3	CD	B	1008	1/1	0.99	0.03	70,70,70,70	0
3	CD	B	1003	1/1	0.99	0.10	37,37,37,37	0

The following is a graphical depiction of the model fit to experimental electron density of all instances of the Ligand of Interest. In addition, ligands with molecular weight > 250 and outliers as shown on the geometry validation Tables will also be included. Each fit is shown from different orientation to approximate a three-dimensional view.

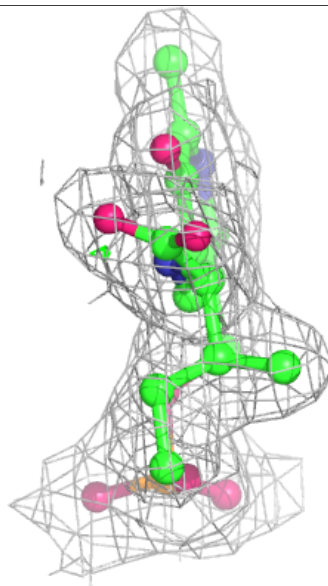
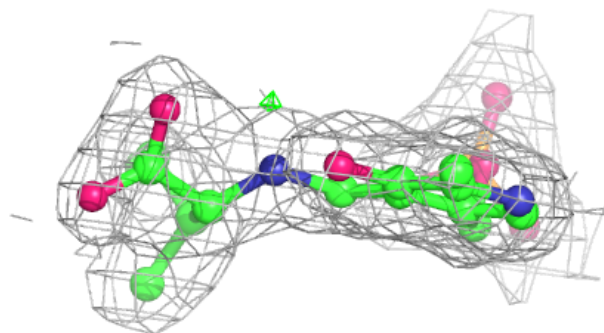
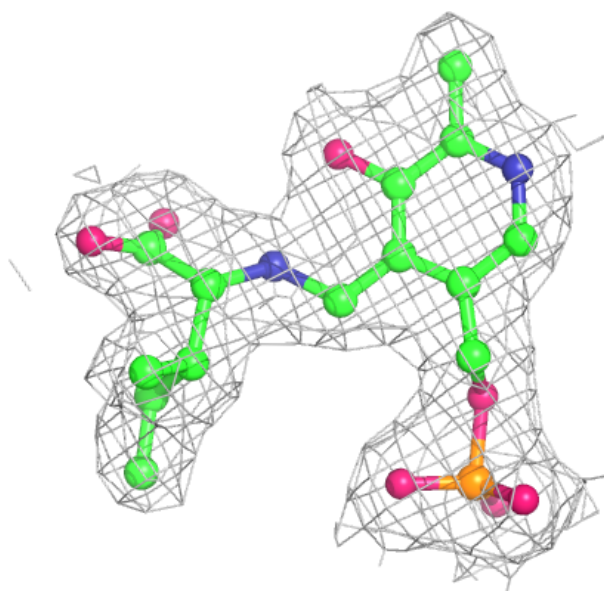
Electron density around ILP D 1001:

$2mF_o-DF_c$ (at 0.7 rmsd) in gray
 mF_o-DF_c (at 3 rmsd) in purple (negative)
and green (positive)



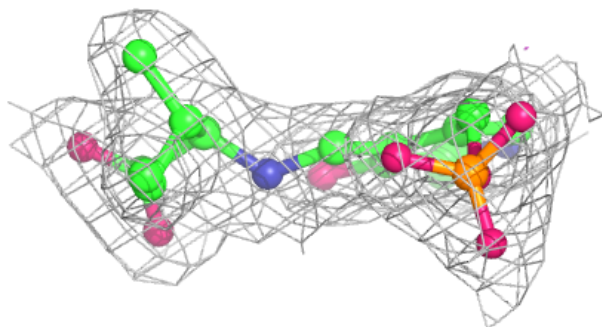
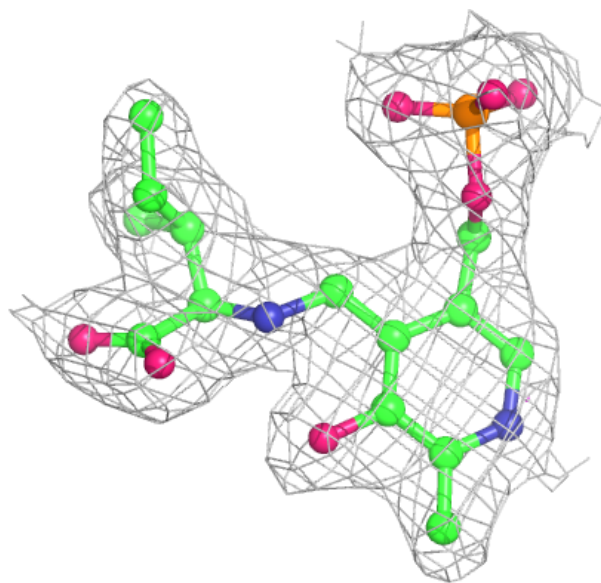
Electron density around ILP A 1001:

$2mF_o-DF_c$ (at 0.7 rmsd) in gray
 mF_o-DF_c (at 3 rmsd) in purple (negative)
and green (positive)



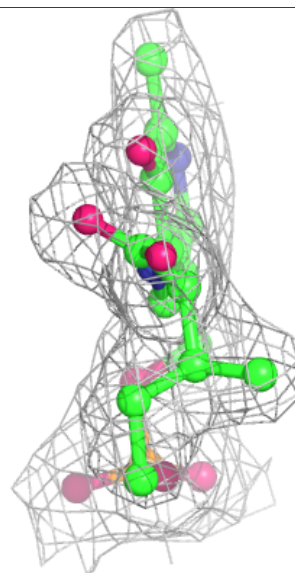
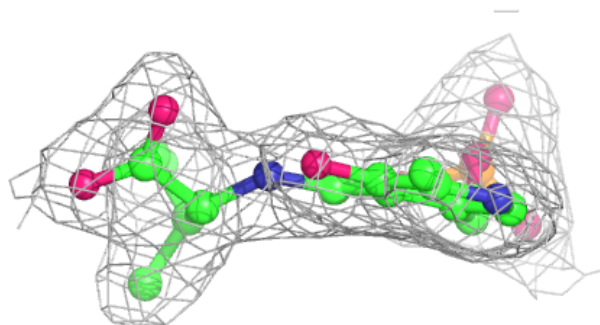
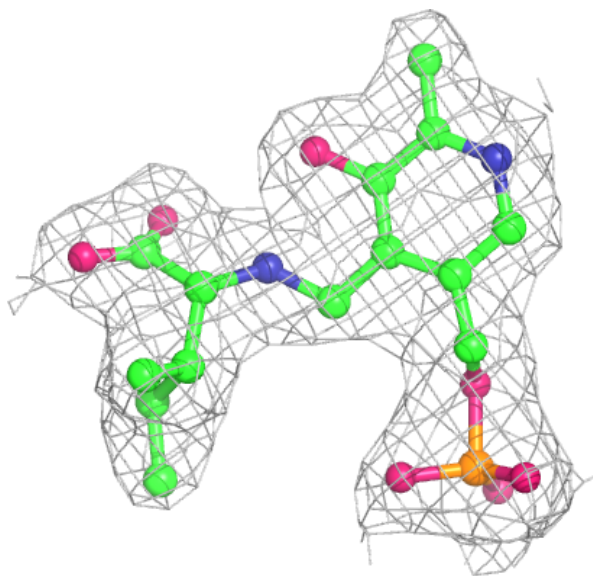
Electron density around ILP B 1001:

$2mF_o-DF_c$ (at 0.7 rmsd) in gray
 mF_o-DF_c (at 3 rmsd) in purple (negative)
and green (positive)



Electron density around ILP C 1001:

$2mF_o-DF_c$ (at 0.7 rmsd) in gray
 mF_o-DF_c (at 3 rmsd) in purple (negative)
and green (positive)



6.5 Other polymers [i](#)

There are no such residues in this entry.