



Full wwPDB X-ray Structure Validation Report ⓘ

Aug 10, 2020 – 11:12 AM BST

PDB ID : 1X0K
Title : Crystal Structure of Bacteriorhodopsin at pH 10
Authors : Okumura, H.; Murakami, M.; Kouyama, T.
Deposited on : 2005-03-23
Resolution : 2.60 Å(reported)

This is a Full wwPDB X-ray Structure Validation Report for a publicly released PDB entry.

We welcome your comments at validation@mail.wwpdb.org

A user guide is available at

<https://www.wwpdb.org/validation/2017/XrayValidationReportHelp>

with specific help available everywhere you see the ⓘ symbol.

The following versions of software and data (see [references ⓘ](#)) were used in the production of this report:

MolProbity : 4.02b-467
Mogul : 1.8.5 (274361), CSD as541be (2020)
Xtriage (Phenix) : 1.13
EDS : 2.13.1
buster-report : 1.1.7 (2018)
Percentile statistics : 20191225.v01 (using entries in the PDB archive December 25th 2019)
Refmac : 5.8.0158
CCP4 : 7.0.044 (Gargrove)
Ideal geometry (proteins) : Engh & Huber (2001)
Ideal geometry (DNA, RNA) : Parkinson et al. (1996)
Validation Pipeline (wwPDB-VP) : 2.13.1

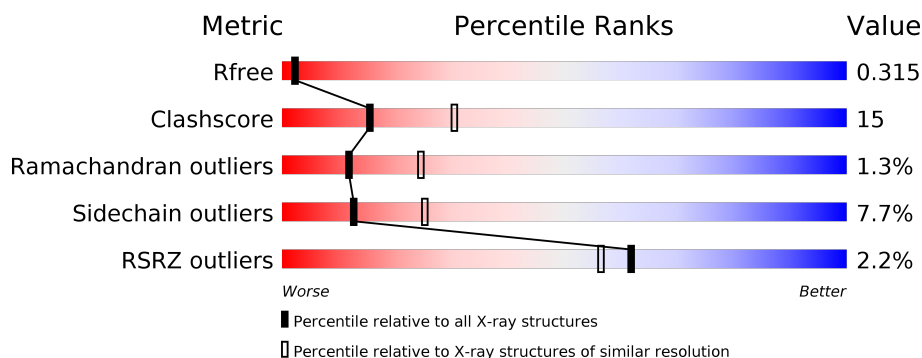
1 Overall quality at a glance

The following experimental techniques were used to determine the structure:

X-RAY DIFFRACTION

The reported resolution of this entry is 2.60 Å.

Percentile scores (ranging between 0-100) for global validation metrics of the entry are shown in the following graphic. The table shows the number of entries on which the scores are based.



Metric	Whole archive (#Entries)	Similar resolution (#Entries, resolution range(Å))
R_{free}	130704	3163 (2.60-2.60)
Clashscore	141614	3518 (2.60-2.60)
Ramachandran outliers	138981	3455 (2.60-2.60)
Sidechain outliers	138945	3455 (2.60-2.60)
RSRZ outliers	127900	3104 (2.60-2.60)

The table below summarises the geometric issues observed across the polymeric chains and their fit to the electron density. The red, orange, yellow and green segments on the lower bar indicate the fraction of residues that contain outliers for ≥ 3 , 2, 1 and 0 types of geometric quality criteria respectively. A grey segment represents the fraction of residues that are not modelled. The numeric value for each fraction is indicated below the corresponding segment, with a dot representing fractions $\leq 5\%$. The upper red bar (where present) indicates the fraction of residues that have poor fit to the electron density. The numeric value is given above the bar.

Mol	Chain	Length	Quality of chain
1	1	248	<div> <div>2%</div> <div> <div></div> <div>62%</div> <div>26%</div> <div>8%</div> </div> </div>
2	A	3	<div> <div>100%</div> </div>

The following table lists non-polymeric compounds, carbohydrate monomers and non-standard residues in protein, DNA, RNA chains that are outliers for geometric or electron-density-fit criteria:

Mol	Type	Chain	Res	Chirality	Geometry	Clashes	Electron density
2	GLC	A	1	X	-	-	-
4	L3P	1	260	-	-	-	X
4	L3P	1	280	-	-	-	X
4	L3P	1	290	-	-	-	X
4	L3P	1	300	-	-	-	X
5	L2P	1	270	-	-	-	X

2 Entry composition [i](#)

There are 6 unique types of molecules in this entry. The entry contains 2088 atoms, of which 0 are hydrogens and 0 are deuteriums.

In the tables below, the ZeroOcc column contains the number of atoms modelled with zero occupancy, the AltConf column contains the number of residues with at least one atom in alternate conformation and the Trace column contains the number of residues modelled with at most 2 atoms.

- Molecule 1 is a protein called Bacteriorhodopsin.

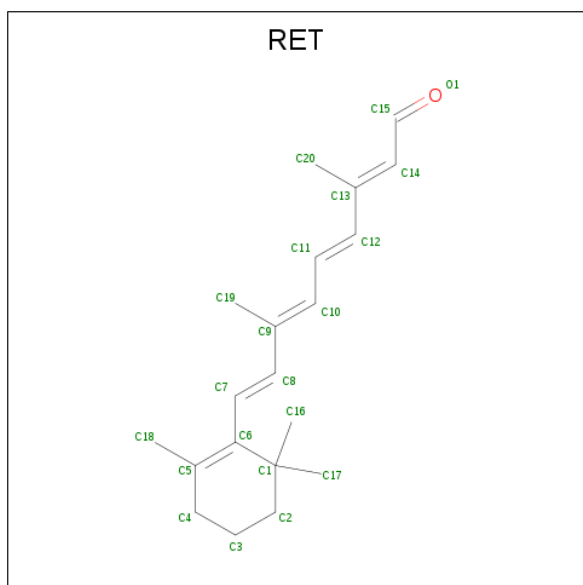
Mol	Chain	Residues	Atoms					ZeroOcc	AltConf	Trace
			Total	C	N	O	S			
1	1	227	1756	1180	268	299	9	0	0	0

- Molecule 2 is an oligosaccharide called beta-D-galactopyranose-(1-6)-alpha-D-mannopyranose-(1-2)-alpha-D-glucopyranose.



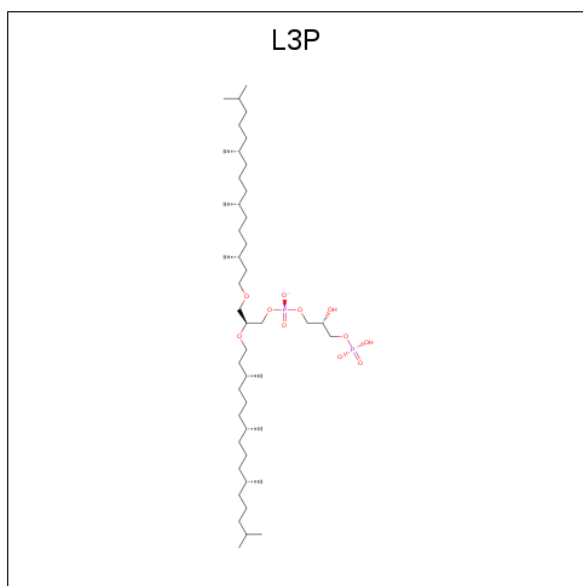
Mol	Chain	Residues	Atoms			ZeroOcc	AltConf	Trace
			Total	C	O			
2	A	3	33	18	15	0	0	0

- Molecule 3 is RETINAL (three-letter code: RET) (formula: C₂₀H₂₈O).



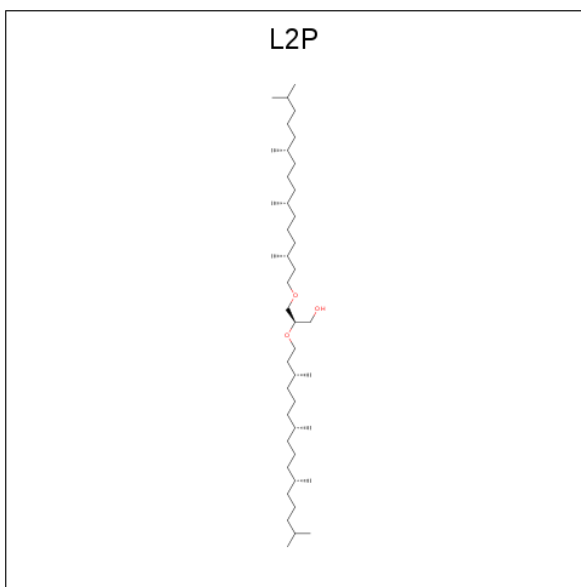
Mol	Chain	Residues	Atoms	ZeroOcc	AltConf
3	1	1	Total C 20 20	0	0

- Molecule 4 is 2,3-DI-O-PHYTANLY-3-SN-GLYCERO-1-PHOSPHORYL-3'-SN-GLYCEROL-1'-PHOSPHATE (three-letter code: L3P) (formula: $C_{46}H_{94}O_{11}P_2$).



Mol	Chain	Residues	Atoms	ZeroOcc	AltConf
4	1	1	Total C O P 50 43 6 1	0	0
4	1	1	Total C O P 40 33 6 1	0	0
4	1	1	Total C O P 50 43 6 1	0	0
4	1	1	Total C O P 50 43 6 1	0	0

- Molecule 5 is 2,3-DI-PHYTANYL-GLYCEROL (three-letter code: L2P) (formula: $C_{43}H_{88}O_3$).



Mol	Chain	Residues	Atoms			ZeroOcc	AltConf
5	1	1	Total	C	O	0	0
			46	43	3		

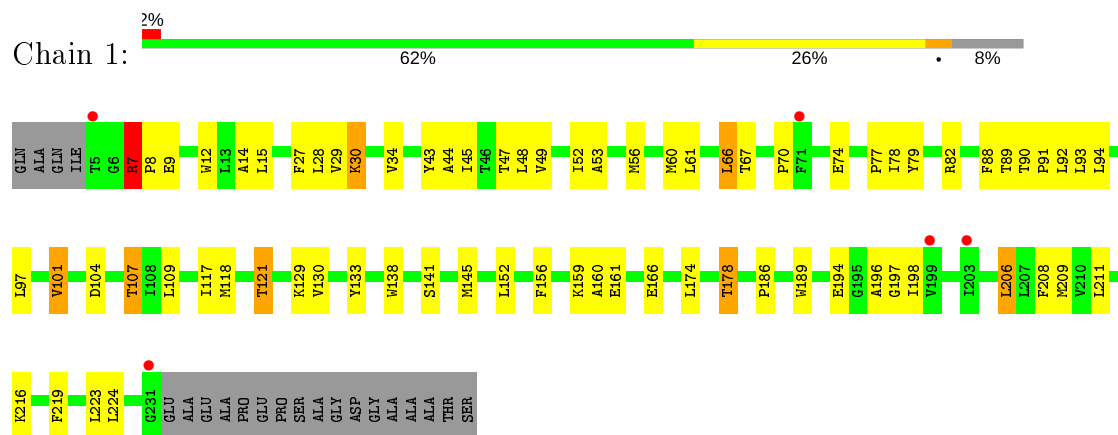
- Molecule 6 is water.

Mol	Chain	Residues	Atoms		ZeroOcc	AltConf
6	1	43	Total	O	0	0
			43	43		

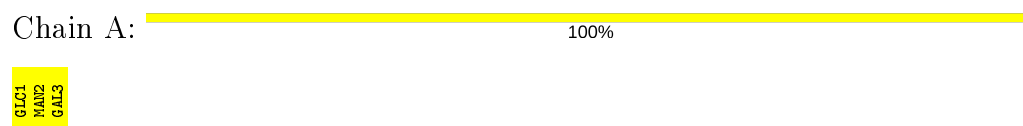
3 Residue-property plots [i](#)

These plots are drawn for all protein, RNA, DNA and oligosaccharide chains in the entry. The first graphic for a chain summarises the proportions of the various outlier classes displayed in the second graphic. The second graphic shows the sequence view annotated by issues in geometry and electron density. Residues are color-coded according to the number of geometric quality criteria for which they contain at least one outlier: green = 0, yellow = 1, orange = 2 and red = 3 or more. A red dot above a residue indicates a poor fit to the electron density ($RSRZ > 2$). Stretches of 2 or more consecutive residues without any outlier are shown as a green connector. Residues present in the sample, but not in the model, are shown in grey.

- Molecule 1: Bacteriorhodopsin



- Molecule 2: beta-D-galactopyranose-(1-6)-alpha-D-mannopyranose-(1-2)-alpha-D-glucopyranose



4 Data and refinement statistics

Property	Value	Source
Space group	P 6 2 2	Depositor
Cell constants a, b, c, α , β , γ	102.45Å 102.45Å 112.81Å 90.00° 90.00° 120.00°	Depositor
Resolution (Å)	14.96 – 2.60 41.28 – 2.60	Depositor EDS
% Data completeness (in resolution range)	99.2 (14.96-2.60) 99.0 (41.28-2.60)	Depositor EDS
R_{merge}	0.10	Depositor
R_{sym}	0.10	Depositor
$\langle I/\sigma(I) \rangle$ ¹	2.08 (at 2.61Å)	Xtriage
Refinement program	CNS 1.1, XTALVIEW	Depositor
R, R_{free}	0.263 , 0.309 0.260 , 0.315	Depositor DCC
R_{free} test set	574 reflections (5.12%)	wwPDB-VP
Wilson B-factor (Å ²)	48.0	Xtriage
Anisotropy	0.613	Xtriage
Bulk solvent k_{sol} (e/Å ³), B_{sol} (Å ²)	0.34 , 64.8	EDS
L-test for twinning ²	$\langle L \rangle = 0.53$, $\langle L^2 \rangle = 0.37$	Xtriage
Estimated twinning fraction	No twinning to report.	Xtriage
F_o, F_c correlation	0.92	EDS
Total number of atoms	2088	wwPDB-VP
Average B, all atoms (Å ²)	53.0	wwPDB-VP

Xtriage's analysis on translational NCS is as follows: *The largest off-origin peak in the Patterson function is 5.40% of the height of the origin peak. No significant pseudotranslation is detected.*

¹Intensities estimated from amplitudes.

²Theoretical values of $\langle |L| \rangle$, $\langle L^2 \rangle$ for acentric reflections are 0.5, 0.333 respectively for untwinned datasets, and 0.375, 0.2 for perfectly twinned datasets.

5 Model quality

5.1 Standard geometry

Bond lengths and bond angles in the following residue types are not validated in this section: GLC, RET, L2P, GAL, L3P, MAN

The Z score for a bond length (or angle) is the number of standard deviations the observed value is removed from the expected value. A bond length (or angle) with $|Z| > 5$ is considered an outlier worth inspection. RMSZ is the root-mean-square of all Z scores of the bond lengths (or angles).

Mol	Chain	Bond lengths		Bond angles	
		RMSZ	$\# Z > 5$	RMSZ	$\# Z > 5$
1	1	0.41	0/1804	0.55	0/2464

There are no bond length outliers.

There are no bond angle outliers.

There are no chirality outliers.

There are no planarity outliers.

5.2 Too-close contacts

In the following table, the Non-H and H(model) columns list the number of non-hydrogen atoms and hydrogen atoms in the chain respectively. The H(added) column lists the number of hydrogen atoms added and optimized by MolProbity. The Clashes column lists the number of clashes within the asymmetric unit, whereas Symm-Clashes lists symmetry related clashes.

Mol	Chain	Non-H	H(model)	H(added)	Clashes	Symm-Clashes
1	1	1756	0	1813	62	0
2	A	33	0	28	0	0
3	1	20	0	27	3	0
4	1	190	0	325	6	0
5	1	46	0	86	0	0
6	1	43	0	0	4	0
All	All	2088	0	2279	64	0

The all-atom clashscore is defined as the number of clashes found per 1000 atoms (including hydrogen atoms). The all-atom clashscore for this structure is 15.

All (64) close contacts within the same asymmetric unit are listed below, sorted by their clash magnitude.

Atom-1	Atom-2	Interatomic distance (Å)	Clash overlap (Å)
1:1:101:VAL:HG13	1:1:159:LYS:HB3	1.49	0.94
1:1:121:THR:HG22	1:1:141:SER:HB2	1.56	0.87
1:1:7:ARG:H	1:1:8:PRO:HD2	1.51	0.73
1:1:174:LEU:O	1:1:178:THR:HG23	1.93	0.69
1:1:101:VAL:CG1	1:1:159:LYS:HB3	2.23	0.68
1:1:15:LEU:HB3	1:1:209:MET:HE2	1.76	0.68
1:1:15:LEU:HD23	1:1:209:MET:HE1	1.76	0.67
1:1:14:ALA:HA	1:1:61:LEU:HD22	1.76	0.67
1:1:44:ALA:HA	4:1:260:L3P:H111	1.78	0.66
1:1:66:LEU:HG	1:1:79:TYR:CE1	2.34	0.62
1:1:101:VAL:HG22	1:1:160:ALA:HB2	1.82	0.60
1:1:48:LEU:O	1:1:52:ILE:HG12	2.02	0.60
1:1:44:ALA:HA	4:1:260:L3P:H142	1.84	0.59
1:1:34:VAL:HG21	1:1:43:TYR:CE1	2.38	0.59
4:1:260:L3P:H2	6:1:634:HOH:O	2.01	0.59
1:1:70:PRO:HG2	1:1:129:LYS:HD3	1.85	0.58
1:1:29:VAL:O	1:1:30:LYS:HB2	2.04	0.58
1:1:82:ARG:HH21	1:1:82:ARG:HG3	1.68	0.58
1:1:196:ALA:O	1:1:198:ILE:HG13	2.05	0.57
1:1:82:ARG:HH21	1:1:82:ARG:CG	2.20	0.55
1:1:121:THR:CG2	1:1:141:SER:HB2	2.33	0.55
1:1:15:LEU:HD23	1:1:209:MET:CE	2.38	0.54
1:1:104:ASP:HB2	1:1:107:THR:HG22	1.90	0.53
1:1:67:THR:HG22	1:1:78:ILE:O	2.10	0.52
1:1:12:TRP:CE2	1:1:206:LEU:HG	2.45	0.52
1:1:78:ILE:CD1	1:1:194:GLU:HG2	2.40	0.51
1:1:159:LYS:HE2	6:1:629:HOH:O	2.11	0.50
1:1:117:ILE:O	1:1:121:THR:HB	2.11	0.50
1:1:104:ASP:HB2	1:1:107:THR:CG2	2.43	0.49
1:1:186:PRO:HB3	3:1:250:RET:H183	1.95	0.48
1:1:90:THR:OG1	1:1:91:PRO:HD3	2.13	0.48
1:1:104:ASP:O	1:1:107:THR:HG23	2.13	0.47
1:1:28:LEU:HD13	4:1:260:L3P:H522	1.95	0.47
1:1:82:ARG:HH11	1:1:208:PHE:HD2	1.62	0.47
1:1:7:ARG:NH1	1:1:7:ARG:HG3	2.31	0.46
1:1:53:ALA:HB2	1:1:216:LYS:HE2	1.98	0.46
1:1:7:ARG:N	1:1:8:PRO:HD2	2.25	0.46
1:1:82:ARG:NH1	6:1:605:HOH:O	2.49	0.45
1:1:130:VAL:HB	1:1:133:TYR:CD2	2.52	0.45
1:1:141:SER:HB3	3:1:250:RET:H41	1.98	0.45
1:1:174:LEU:HD22	1:1:219:PHE:CE2	2.51	0.45
1:1:56:MET:CE	1:1:56:MET:HA	2.47	0.44

Continued on next page...

Continued from previous page...

Atom-1	Atom-2	Interatomic distance (Å)	Clash overlap (Å)
1:1:12:TRP:HB3	1:1:209:MET:HE3	1.99	0.44
1:1:47:THR:HG21	4:1:260:L3P:H13	1.98	0.44
1:1:118:MET:SD	1:1:145:MET:HB2	2.58	0.44
3:1:250:RET:H7	3:1:250:RET:H181	1.83	0.43
1:1:7:ARG:H	1:1:8:PRO:CD	2.24	0.43
1:1:15:LEU:HB3	1:1:209:MET:CE	2.47	0.43
1:1:166:GLU:HB2	6:1:630:HOH:O	2.19	0.43
1:1:60:MET:SD	1:1:82:ARG:NH2	2.92	0.42
1:1:27:PHE:CD1	1:1:224:LEU:HD12	2.55	0.42
1:1:88:PHE:C	1:1:91:PRO:HD2	2.40	0.42
1:1:7:ARG:N	1:1:9:GLU:OE2	2.53	0.42
1:1:174:LEU:HD11	1:1:223:LEU:HB2	2.01	0.42
1:1:7:ARG:CG	1:1:7:ARG:HH11	2.33	0.42
1:1:152:LEU:O	1:1:156:PHE:HB2	2.20	0.41
1:1:48:LEU:HG	4:1:260:L3P:H143	2.02	0.41
1:1:109:LEU:O	1:1:109:LEU:HD12	2.20	0.41
1:1:12:TRP:HE3	1:1:209:MET:HE1	1.86	0.41
1:1:66:LEU:HD21	1:1:77:PRO:HB2	2.02	0.41
1:1:92:LEU:HA	1:1:92:LEU:HD23	1.87	0.41
1:1:138:TRP:CD1	1:1:189:TRP:CE3	3.09	0.40
1:1:45:ILE:O	1:1:49:VAL:HG23	2.22	0.40
1:1:29:VAL:HG12	1:1:29:VAL:O	2.21	0.40

There are no symmetry-related clashes.

5.3 Torsion angles [i](#)

5.3.1 Protein backbone [i](#)

In the following table, the Percentiles column shows the percent Ramachandran outliers of the chain as a percentile score with respect to all X-ray entries followed by that with respect to entries of similar resolution.

The Analysed column shows the number of residues for which the backbone conformation was analysed, and the total number of residues.

Mol	Chain	Analysed	Favoured	Allowed	Outliers	Percentiles
1	1	225/248 (91%)	210 (93%)	12 (5%)	3 (1%)	12 24

All (3) Ramachandran outliers are listed below:

Mol	Chain	Res	Type
1	1	7	ARG
1	1	30	LYS
1	1	197	GLY

5.3.2 Protein sidechains ⓘ

In the following table, the Percentiles column shows the percent sidechain outliers of the chain as a percentile score with respect to all X-ray entries followed by that with respect to entries of similar resolution.

The Analysed column shows the number of residues for which the sidechain conformation was analysed, and the total number of residues.

Mol	Chain	Analysed	Rotameric	Outliers	Percentiles	
1	1	182/194 (94%)	168 (92%)	14 (8%)	13	25

All (14) residues with a non-rotameric sidechain are listed below:

Mol	Chain	Res	Type
1	1	7	ARG
1	1	66	LEU
1	1	74	GLU
1	1	89	THR
1	1	93	LEU
1	1	94	LEU
1	1	97	LEU
1	1	101	VAL
1	1	107	THR
1	1	121	THR
1	1	161	GLU
1	1	178	THR
1	1	206	LEU
1	1	211	LEU

Some sidechains can be flipped to improve hydrogen bonding and reduce clashes. There are no such sidechains identified.

5.3.3 RNA ⓘ

There are no RNA molecules in this entry.

5.4 Non-standard residues in protein, DNA, RNA chains ⓘ

There are no non-standard protein/DNA/RNA residues in this entry.

5.5 Carbohydrates ⓘ

3 monosaccharides are modelled in this entry.

In the following table, the Counts columns list the number of bonds (or angles) for which Mogul statistics could be retrieved, the number of bonds (or angles) that are observed in the model and the number of bonds (or angles) that are defined in the Chemical Component Dictionary. The Link column lists molecule types, if any, to which the group is linked. The Z score for a bond length (or angle) is the number of standard deviations the observed value is removed from the expected value. A bond length (or angle) with $|Z| > 2$ is considered an outlier worth inspection. RMSZ is the root-mean-square of all Z scores of the bond lengths (or angles).

Mol	Type	Chain	Res	Link	Bond lengths			Bond angles		
					Counts	RMSZ	# $ Z > 2$	Counts	RMSZ	# $ Z > 2$
2	GLC	A	1	2,5	11,11,12	2.28	4 (36%)	15,15,17	1.37	2 (13%)
2	MAN	A	2	2	11,11,12	2.27	6 (54%)	15,15,17	1.59	2 (13%)
2	GAL	A	3	2	11,11,12	2.89	6 (54%)	15,15,17	1.52	2 (13%)

In the following table, the Chirals column lists the number of chiral outliers, the number of chiral centers analysed, the number of these observed in the model and the number defined in the Chemical Component Dictionary. Similar counts are reported in the Torsion and Rings columns. '-' means no outliers of that kind were identified.

Mol	Type	Chain	Res	Link	Chirals	Torsions	Rings
2	GLC	A	1	2,5	1/1/4/5	0/2/19/22	0/1/1/1
2	MAN	A	2	2	-	2/2/19/22	0/1/1/1
2	GAL	A	3	2	-	1/2/19/22	0/1/1/1

All (16) bond length outliers are listed below:

Mol	Chain	Res	Type	Atoms	Z	Observed(Å)	Ideal(Å)
2	A	3	GAL	O5-C5	4.93	1.53	1.43
2	A	3	GAL	C4-C5	4.48	1.62	1.53
2	A	1	GLC	O5-C5	4.26	1.52	1.43
2	A	3	GAL	O5-C1	3.88	1.49	1.43
2	A	2	MAN	C2-C3	3.75	1.58	1.52
2	A	2	MAN	O2-C2	3.57	1.50	1.43
2	A	1	GLC	O5-C1	3.48	1.49	1.43
2	A	3	GAL	C4-C3	3.32	1.60	1.52

Continued on next page...

Continued from previous page...

Mol	Chain	Res	Type	Atoms	Z	Observed(Å)	Ideal(Å)
2	A	1	GLC	C1-C2	3.29	1.59	1.52
2	A	3	GAL	C1-C2	3.13	1.59	1.52
2	A	1	GLC	C2-C3	3.05	1.57	1.52
2	A	3	GAL	C2-C3	2.90	1.56	1.52
2	A	2	MAN	O5-C1	2.60	1.47	1.43
2	A	2	MAN	C1-C2	2.56	1.58	1.52
2	A	2	MAN	O5-C5	2.54	1.48	1.43
2	A	2	MAN	C4-C5	2.51	1.58	1.53

All (6) bond angle outliers are listed below:

Mol	Chain	Res	Type	Atoms	Z	Observed(°)	Ideal(°)
2	A	2	MAN	O6-C6-C5	3.95	124.83	111.29
2	A	1	GLC	O5-C5-C6	-3.71	101.38	107.20
2	A	3	GAL	C3-C4-C5	-3.33	104.30	110.24
2	A	2	MAN	C1-O5-C5	3.18	116.50	112.19
2	A	3	GAL	O5-C5-C6	2.40	110.97	107.20
2	A	1	GLC	O4-C4-C3	2.28	115.62	110.35

All (1) chirality outliers are listed below:

Mol	Chain	Res	Type	Atom
2	A	1	GLC	C1

All (3) torsion outliers are listed below:

Mol	Chain	Res	Type	Atoms
2	A	2	MAN	O5-C5-C6-O6
2	A	2	MAN	C4-C5-C6-O6
2	A	3	GAL	O5-C5-C6-O6

There are no ring outliers.

No monomer is involved in short contacts.

5.6 Ligand geometry ⓘ

6 ligands are modelled in this entry.

In the following table, the Counts columns list the number of bonds (or angles) for which Mogul statistics could be retrieved, the number of bonds (or angles) that are observed in the model and the number of bonds (or angles) that are defined in the Chemical Component Dictionary. The

Link column lists molecule types, if any, to which the group is linked. The Z score for a bond length (or angle) is the number of standard deviations the observed value is removed from the expected value. A bond length (or angle) with $|Z| > 2$ is considered an outlier worth inspection. RMSZ is the root-mean-square of all Z scores of the bond lengths (or angles).

Mol	Type	Chain	Res	Link	Bond lengths			Bond angles		
					Counts	RMSZ	$\# Z > 2$	Counts	RMSZ	$\# Z > 2$
4	L3P	1	280	-	39,39,58	1.99	13 (33%)	45,48,73	1.14	3 (6%)
4	L3P	1	300	-	49,49,58	1.71	15 (30%)	57,60,73	1.18	6 (10%)
4	L3P	1	260	-	49,49,58	1.28	6 (12%)	57,60,73	1.45	9 (15%)
4	L3P	1	290	-	49,49,58	1.92	17 (34%)	57,60,73	1.21	5 (8%)
3	RET	1	250	1	20,20,21	2.19	5 (25%)	27,27,28	1.66	8 (29%)
5	L2P	1	270	2	45,45,45	1.42	6 (13%)	51,53,53	1.92	15 (29%)

In the following table, the Chirals column lists the number of chiral outliers, the number of chiral centers analysed, the number of these observed in the model and the number defined in the Chemical Component Dictionary. Similar counts are reported in the Torsion and Rings columns. '-' means no outliers of that kind were identified.

Mol	Type	Chain	Res	Link	Chirals	Torsions	Rings
4	L3P	1	280	-	-	18/43/43/67	-
4	L3P	1	300	-	-	30/55/55/67	-
4	L3P	1	260	-	-	26/55/55/67	-
4	L3P	1	290	-	-	21/55/55/67	-
3	RET	1	250	1	-	0/13/30/31	0/1/1/1
5	L2P	1	270	2	-	22/51/51/51	-

All (62) bond length outliers are listed below:

Mol	Chain	Res	Type	Atoms	Z	Observed(Å)	Ideal(Å)
3	1	250	RET	C1-C6	5.61	1.61	1.53
4	1	280	L3P	O2-C2	5.15	1.58	1.43
3	1	250	RET	C5-C6	4.93	1.43	1.34
4	1	290	L3P	P1-O3	4.56	1.74	1.60
4	1	300	L3P	P1-O3	4.33	1.74	1.60
4	1	280	L3P	P1-O2P	4.15	1.70	1.54
3	1	250	RET	C14-C13	3.90	1.36	1.33
4	1	280	L3P	C3-C2	3.89	1.62	1.50
5	1	270	L2P	C26-C25	3.66	1.67	1.52
4	1	260	L3P	P1-O3	3.57	1.71	1.60
4	1	280	L3P	C1-C2	3.56	1.61	1.50
4	1	260	L3P	P1-O2P	3.43	1.68	1.54

Continued on next page...

Continued from previous page...

Mol	Chain	Res	Type	Atoms	Z	Observed(Å)	Ideal(Å)
4	1	260	L3P	O2-C41	3.34	1.52	1.43
4	1	290	L3P	C14-C13	3.14	1.62	1.52
4	1	300	L3P	C12-C11	3.11	1.61	1.50
4	1	290	L3P	C15-C13	3.11	1.68	1.52
4	1	300	L3P	C3-C2	3.03	1.60	1.50
4	1	290	L3P	P1-O2P	3.00	1.66	1.54
4	1	290	L3P	C3-C2	2.95	1.59	1.50
4	1	290	L3P	C12-C11	2.95	1.61	1.50
4	1	300	L3P	P1-O2P	2.86	1.65	1.54
4	1	290	L3P	C19-C18	2.81	1.61	1.52
4	1	280	L3P	P1-O3	2.75	1.69	1.60
3	1	250	RET	C2-C3	-2.75	1.45	1.52
4	1	280	L3P	O2-C41	2.72	1.50	1.43
4	1	300	L3P	C15-C13	2.69	1.66	1.52
4	1	280	L3P	O1-C1	2.64	1.49	1.42
4	1	290	L3P	C55-C53	2.63	1.66	1.52
4	1	290	L3P	C25-C23	2.63	1.66	1.52
5	1	270	L2P	C25-C23	2.62	1.66	1.52
3	1	250	RET	C7-C6	2.61	1.54	1.45
4	1	290	L3P	O1-C11	2.60	1.53	1.42
4	1	300	L3P	C17-C18	2.54	1.65	1.52
4	1	280	L3P	C52-C53	2.51	1.65	1.52
4	1	280	L3P	C42-C41	2.51	1.59	1.50
4	1	260	L3P	C42-C41	2.50	1.59	1.50
4	1	300	L3P	C19-C18	2.49	1.60	1.52
4	1	260	L3P	O2-C2	2.49	1.50	1.43
4	1	290	L3P	C26-C27	2.48	1.62	1.52
4	1	280	L3P	C56-C55	2.47	1.62	1.52
4	1	290	L3P	C54-C53	2.46	1.60	1.52
4	1	300	L3P	C26-C27	2.45	1.62	1.52
4	1	300	L3P	C55-C53	2.42	1.65	1.52
4	1	290	L3P	C17-C18	2.42	1.65	1.52
4	1	290	L3P	C56-C55	2.38	1.62	1.52
5	1	270	L2P	C42-C41	2.37	1.59	1.50
4	1	300	L3P	O1-C11	2.37	1.52	1.42
4	1	290	L3P	C26-C25	2.37	1.62	1.52
5	1	270	L2P	O2-C41	2.36	1.49	1.43
5	1	270	L2P	C47-C48	2.35	1.64	1.52
4	1	300	L3P	C14-C13	2.31	1.60	1.52
4	1	280	L3P	C12-C11	2.19	1.58	1.50
4	1	290	L3P	O2-C41	2.15	1.48	1.43
4	1	300	L3P	C26-C25	2.14	1.61	1.52

Continued on next page...

Continued from previous page...

Mol	Chain	Res	Type	Atoms	Z	Observed(Å)	Ideal(Å)
4	1	280	L3P	C56-C57	2.11	1.61	1.52
4	1	300	L3P	C54-C53	2.08	1.59	1.52
4	1	300	L3P	C56-C55	2.07	1.61	1.52
4	1	280	L3P	C12-C13	2.07	1.63	1.52
4	1	290	L3P	C21-C22	2.04	1.60	1.52
4	1	300	L3P	C25-C23	2.03	1.63	1.52
5	1	270	L2P	C22-C23	2.02	1.63	1.52
4	1	260	L3P	O1-C1	2.01	1.47	1.42

All (46) bond angle outliers are listed below:

Mol	Chain	Res	Type	Atoms	Z	Observed(°)	Ideal(°)
5	1	270	L2P	O1-C1-C2	6.19	123.99	109.44
5	1	270	L2P	C29-C28-C27	5.70	146.79	111.54
4	1	290	L3P	O1-C1-C2	4.94	121.06	109.44
4	1	260	L3P	C41-O2-C2	4.90	126.67	115.40
4	1	260	L3P	P1-O3-C3	4.55	130.83	118.30
4	1	280	L3P	C51-C50-C48	3.72	127.95	115.92
5	1	270	L2P	C26-C27-C28	3.44	132.21	115.98
5	1	270	L2P	C54-C53-C52	-3.39	99.02	111.29
3	1	250	RET	C1-C6-C7	3.15	124.69	115.78
4	1	260	L3P	O2-C41-C42	3.07	115.22	108.77
4	1	300	L3P	O1-C1-C2	2.95	116.38	109.44
4	1	260	L3P	C46-C45-C43	-2.90	106.53	115.92
3	1	250	RET	C8-C9-C10	-2.89	114.50	118.94
4	1	290	L3P	O2P-P1-O3	2.83	114.25	106.73
5	1	270	L2P	C16-C15-C13	-2.82	106.80	115.92
4	1	280	L3P	O2-C41-C42	2.78	114.60	108.77
5	1	270	L2P	C51-C52-C53	2.74	124.76	115.92
5	1	270	L2P	C16-C17-C18	-2.72	107.12	115.92
4	1	300	L3P	O2P-P1-O3	2.72	113.97	106.73
3	1	250	RET	C2-C1-C6	2.64	114.55	110.48
5	1	270	L2P	C30-C28-C29	-2.63	98.39	110.51
4	1	260	L3P	C26-C25-C23	-2.62	107.44	115.92
4	1	300	L3P	C21-C20-C18	2.60	124.32	115.92
5	1	270	L2P	C52-C51-C50	-2.59	101.33	113.24
4	1	290	L3P	O4-P1-O3	2.57	113.58	106.73
4	1	300	L3P	C47-C46-C45	-2.56	101.46	113.24
3	1	250	RET	C1-C6-C5	-2.55	119.02	122.61
4	1	300	L3P	C16-C17-C18	2.53	124.10	115.92
4	1	260	L3P	C51-C50-C48	-2.51	107.80	115.92
4	1	290	L3P	C47-C46-C45	-2.51	101.70	113.24

Continued on next page...

Continued from previous page...

Mol	Chain	Res	Type	Atoms	Z	Observed(°)	Ideal(°)
5	1	270	L2P	C14-C13-C12	-2.49	102.28	111.29
4	1	280	L3P	C51-C52-C53	2.47	123.89	115.92
5	1	270	L2P	C41-O2-C2	2.45	121.03	115.40
4	1	260	L3P	C11-O1-C1	2.44	124.51	113.61
5	1	270	L2P	O3-C3-C2	2.43	118.22	111.78
4	1	300	L3P	O4-P1-O3	2.42	113.18	106.73
3	1	250	RET	C2-C3-C4	2.31	116.55	111.38
4	1	260	L3P	O2P-P1-O3	2.24	112.69	106.73
5	1	270	L2P	C19-C18-C20	-2.21	103.30	111.29
3	1	250	RET	C19-C9-C8	2.19	121.53	118.08
3	1	250	RET	C7-C6-C5	-2.16	116.24	121.46
3	1	250	RET	C17-C1-C6	2.06	113.65	110.30
5	1	270	L2P	C22-C21-C20	-2.06	103.77	113.24
4	1	260	L3P	C56-C55-C53	2.05	122.53	115.92
4	1	290	L3P	C46-C47-C48	2.01	122.41	115.92
5	1	270	L2P	C49-C48-C47	2.01	118.55	111.29

There are no chirality outliers.

All (117) torsion outliers are listed below:

Mol	Chain	Res	Type	Atoms
4	1	280	L3P	C41-C42-C43-C44
4	1	300	L3P	C2-C3-O3-P1
4	1	300	L3P	C3-O3-P1-O4
4	1	300	L3P	C3-O3-P1-O1P
4	1	300	L3P	C3-O3-P1-O2P
4	1	300	L3P	C16-C17-C18-C19
4	1	300	L3P	C41-C42-C43-C44
4	1	260	L3P	C41-C42-C43-C44
4	1	290	L3P	C3-O3-P1-O4
4	1	290	L3P	C3-O3-P1-O1P
4	1	290	L3P	C3-O3-P1-O2P
5	1	270	L2P	C42-C41-O2-C2
5	1	270	L2P	C11-C12-C13-C14
5	1	270	L2P	C24-C23-C25-C26
4	1	290	L3P	C18-C20-C21-C22
4	1	260	L3P	C18-C20-C21-C22
4	1	290	L3P	C13-C15-C16-C17
4	1	290	L3P	C50-C51-C52-C53
4	1	290	L3P	C25-C26-C27-C28
4	1	300	L3P	C50-C51-C52-C53
5	1	270	L2P	C15-C16-C17-C18

Continued on next page...

Continued from previous page...

Mol	Chain	Res	Type	Atoms
4	1	260	L3P	C52-C53-C55-C56
4	1	280	L3P	C15-C16-C17-C18
4	1	260	L3P	C15-C16-C17-C18
4	1	260	L3P	C20-C21-C22-C23
4	1	290	L3P	C43-C45-C46-C47
4	1	260	L3P	C23-C25-C26-C27
4	1	280	L3P	C50-C51-C52-C53
4	1	260	L3P	C48-C50-C51-C52
4	1	280	L3P	C16-C17-C18-C20
4	1	290	L3P	C26-C27-C28-C29
4	1	260	L3P	C44-C43-C45-C46
5	1	270	L2P	C14-C13-C15-C16
4	1	300	L3P	C42-C41-O2-C2
4	1	260	L3P	C42-C41-O2-C2
4	1	280	L3P	C56-C57-C58-C59
4	1	280	L3P	C56-C57-C58-C60
4	1	290	L3P	C26-C27-C28-C30
5	1	270	L2P	C26-C27-C28-C30
4	1	280	L3P	C16-C17-C18-C19
4	1	260	L3P	C42-C43-C45-C46
5	1	270	L2P	C26-C27-C28-C29
4	1	300	L3P	C44-C43-C45-C46
4	1	260	L3P	C21-C22-C23-C24
4	1	260	L3P	C54-C53-C55-C56
5	1	270	L2P	C19-C18-C20-C21
5	1	270	L2P	C51-C52-C53-C54
4	1	300	L3P	C26-C27-C28-C30
4	1	300	L3P	C26-C27-C28-C29
4	1	290	L3P	O1-C1-C2-C3
4	1	290	L3P	C45-C46-C47-C48
4	1	300	L3P	C43-C45-C46-C47
4	1	290	L3P	C53-C55-C56-C57
4	1	300	L3P	C15-C16-C17-C18
4	1	290	L3P	C56-C57-C58-C60
4	1	280	L3P	C42-C43-C45-C46
4	1	280	L3P	C52-C53-C55-C56
4	1	300	L3P	C42-C43-C45-C46
4	1	260	L3P	C21-C22-C23-C25
4	1	260	L3P	C47-C48-C50-C51
5	1	270	L2P	C12-C13-C15-C16
5	1	270	L2P	C17-C18-C20-C21
5	1	270	L2P	C22-C23-C25-C26

Continued on next page...

Continued from previous page...

Mol	Chain	Res	Type	Atoms
5	1	270	L2P	C51-C52-C53-C55
4	1	280	L3P	C44-C43-C45-C46
4	1	300	L3P	C49-C48-C50-C51
4	1	260	L3P	C49-C48-C50-C51
4	1	300	L3P	C56-C57-C58-C59
4	1	260	L3P	C50-C51-C52-C53
4	1	260	L3P	C1-C2-C3-O3
4	1	280	L3P	C41-C42-C43-C45
4	1	260	L3P	C41-C42-C43-C45
4	1	300	L3P	C55-C56-C57-C58
4	1	260	L3P	C53-C55-C56-C57
4	1	300	L3P	C2-C1-O1-C11
4	1	280	L3P	C14-C13-C15-C16
4	1	300	L3P	C46-C47-C48-C49
4	1	300	L3P	C56-C57-C58-C60
4	1	290	L3P	C56-C57-C58-C59
4	1	300	L3P	O1-C11-C12-C13
4	1	280	L3P	C12-C13-C15-C16
4	1	300	L3P	C16-C17-C18-C20
4	1	300	L3P	C46-C47-C48-C50
4	1	300	L3P	C47-C48-C50-C51
4	1	290	L3P	C42-C43-C45-C46
4	1	260	L3P	C25-C26-C27-C28
4	1	260	L3P	C26-C27-C28-C30
4	1	300	L3P	C45-C46-C47-C48
4	1	300	L3P	C41-C42-C43-C45
5	1	270	L2P	C11-C12-C13-C15
4	1	260	L3P	C26-C27-C28-C29
4	1	260	L3P	C24-C23-C25-C26
4	1	280	L3P	C12-C11-O1-C1
4	1	280	L3P	O1-C11-C12-C13
4	1	280	L3P	O2-C41-C42-C43
4	1	260	L3P	O2-C2-C3-O3
4	1	260	L3P	C22-C23-C25-C26
5	1	270	L2P	C16-C17-C18-C20
5	1	270	L2P	C2-C1-O1-C11
4	1	290	L3P	O1-C1-C2-O2
4	1	290	L3P	C44-C43-C45-C46
5	1	270	L2P	C16-C17-C18-C19
4	1	300	L3P	C12-C11-O1-C1
5	1	270	L2P	C45-C46-C47-C48
4	1	290	L3P	C12-C11-O1-C1

Continued on next page...

Continued from previous page...

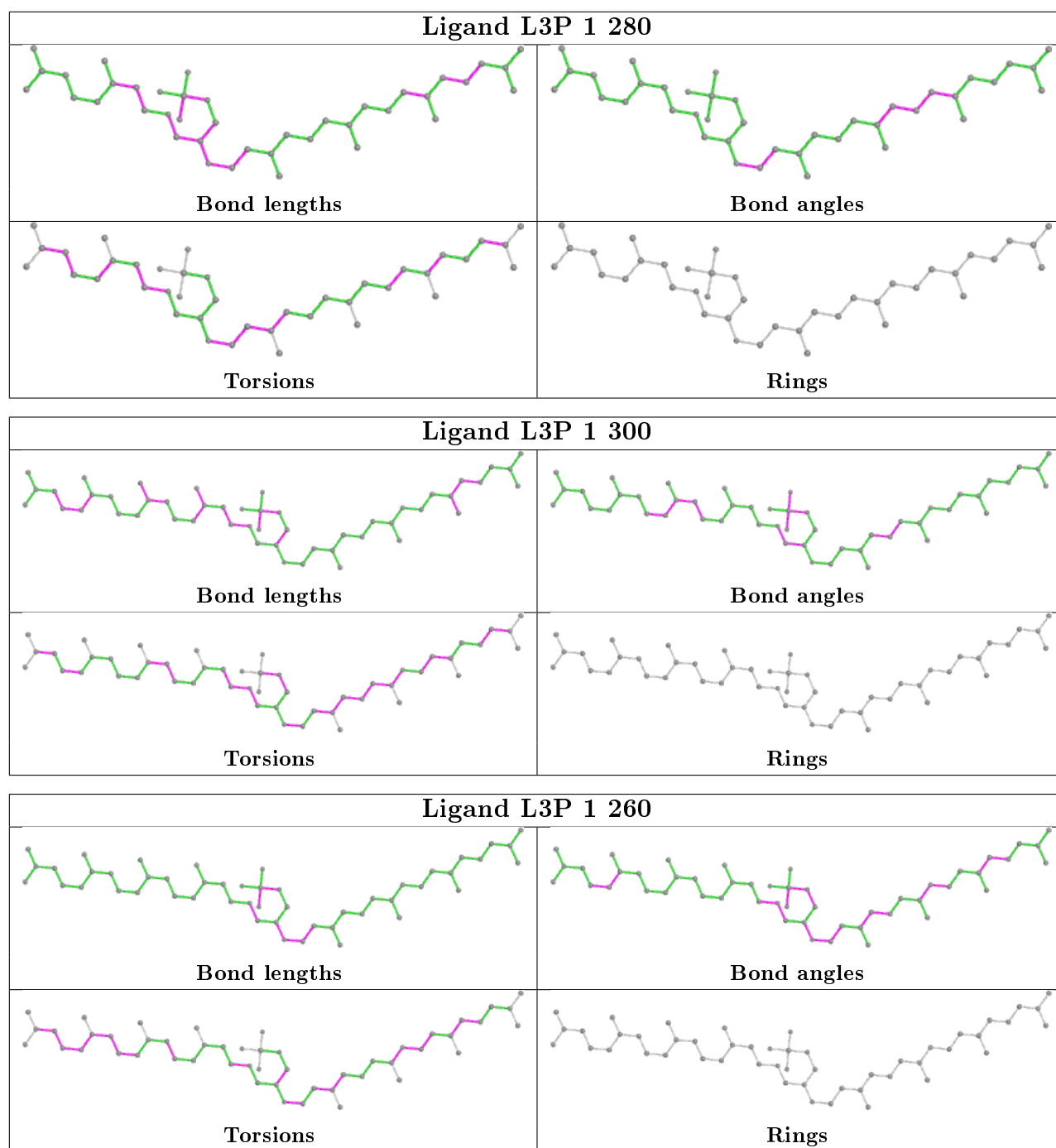
Mol	Chain	Res	Type	Atoms
5	1	270	L2P	C53-C55-C56-C57
4	1	280	L3P	C54-C53-C55-C56
4	1	300	L3P	C51-C52-C53-C55
4	1	290	L3P	C2-C1-O1-C11
4	1	290	L3P	C48-C50-C51-C52
5	1	270	L2P	C12-C11-O1-C1
4	1	280	L3P	C42-C41-O2-C2
5	1	270	L2P	C56-C57-C58-C60
4	1	300	L3P	C23-C25-C26-C27
5	1	270	L2P	C56-C57-C58-C59
4	1	300	L3P	C51-C52-C53-C54
4	1	260	L3P	C12-C11-O1-C1

There are no ring outliers.

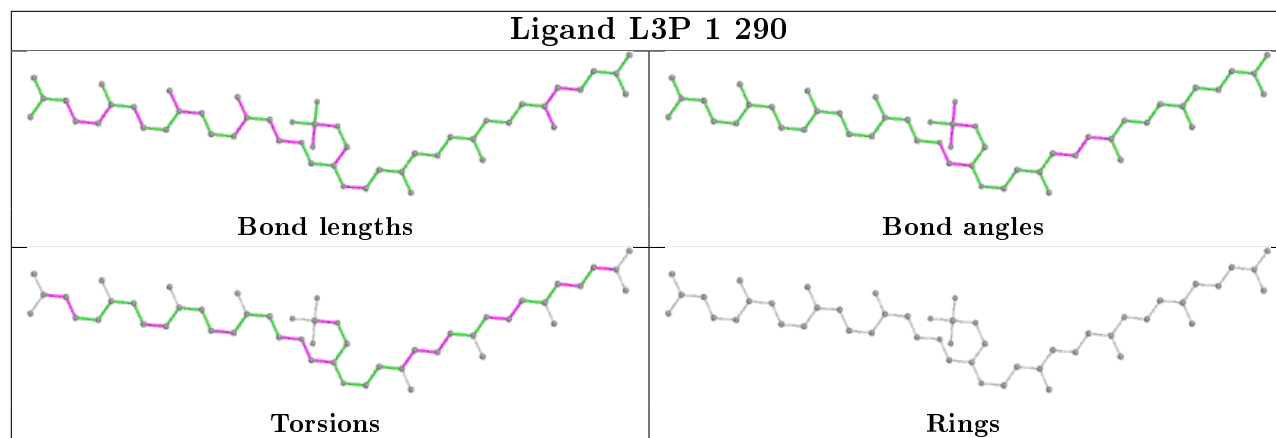
2 monomers are involved in 9 short contacts:

Mol	Chain	Res	Type	Clashes	Symm-Clashes
4	1	260	L3P	6	0
3	1	250	RET	3	0

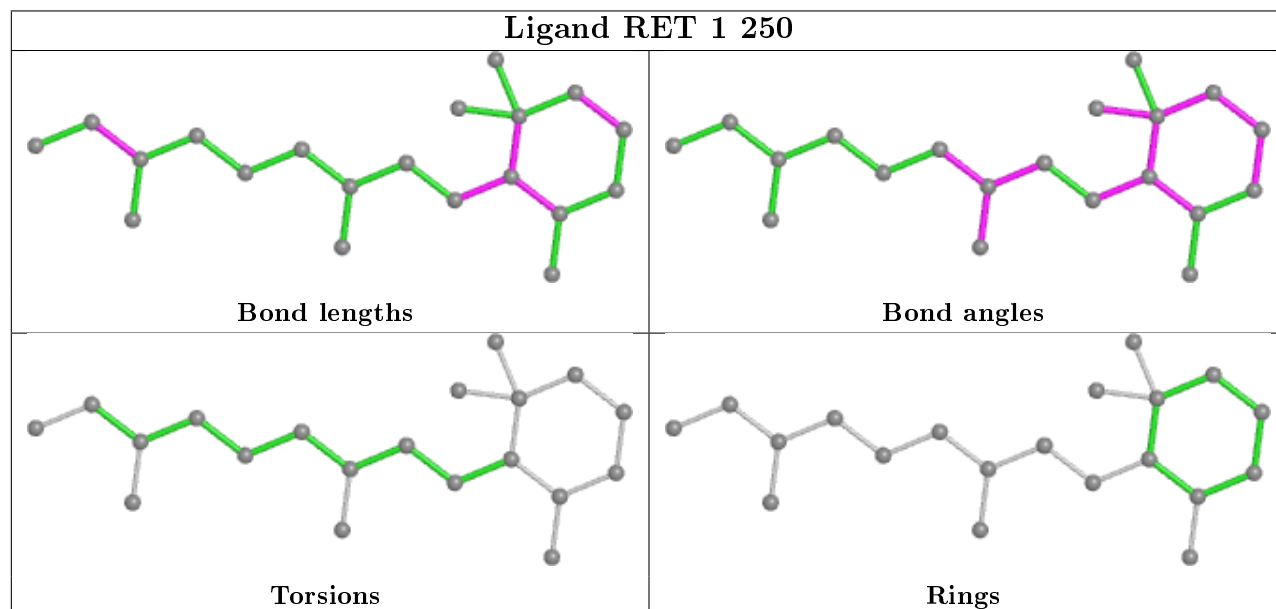
The following is a two-dimensional graphical depiction of Mogul quality analysis of bond lengths, bond angles, torsion angles, and ring geometry for all instances of the Ligand of Interest. In addition, ligands with molecular weight > 250 and outliers as shown on the validation Tables will also be included. For torsion angles, if less than 5% of the Mogul distribution of torsion angles is within 10 degrees of the torsion angle in question, then that torsion angle is considered an outlier. Any bond that is central to one or more torsion angles identified as an outlier by Mogul will be highlighted in the graph. For rings, the root-mean-square deviation (RMSD) between the ring in question and similar rings identified by Mogul is calculated over all ring torsion angles. If the average RMSD is greater than 60 degrees and the minimal RMSD between the ring in question and any Mogul-identified rings is also greater than 60 degrees, then that ring is considered an outlier. The outliers are highlighted in purple. The color gray indicates Mogul did not find sufficient equivalents in the CSD to analyse the geometry.

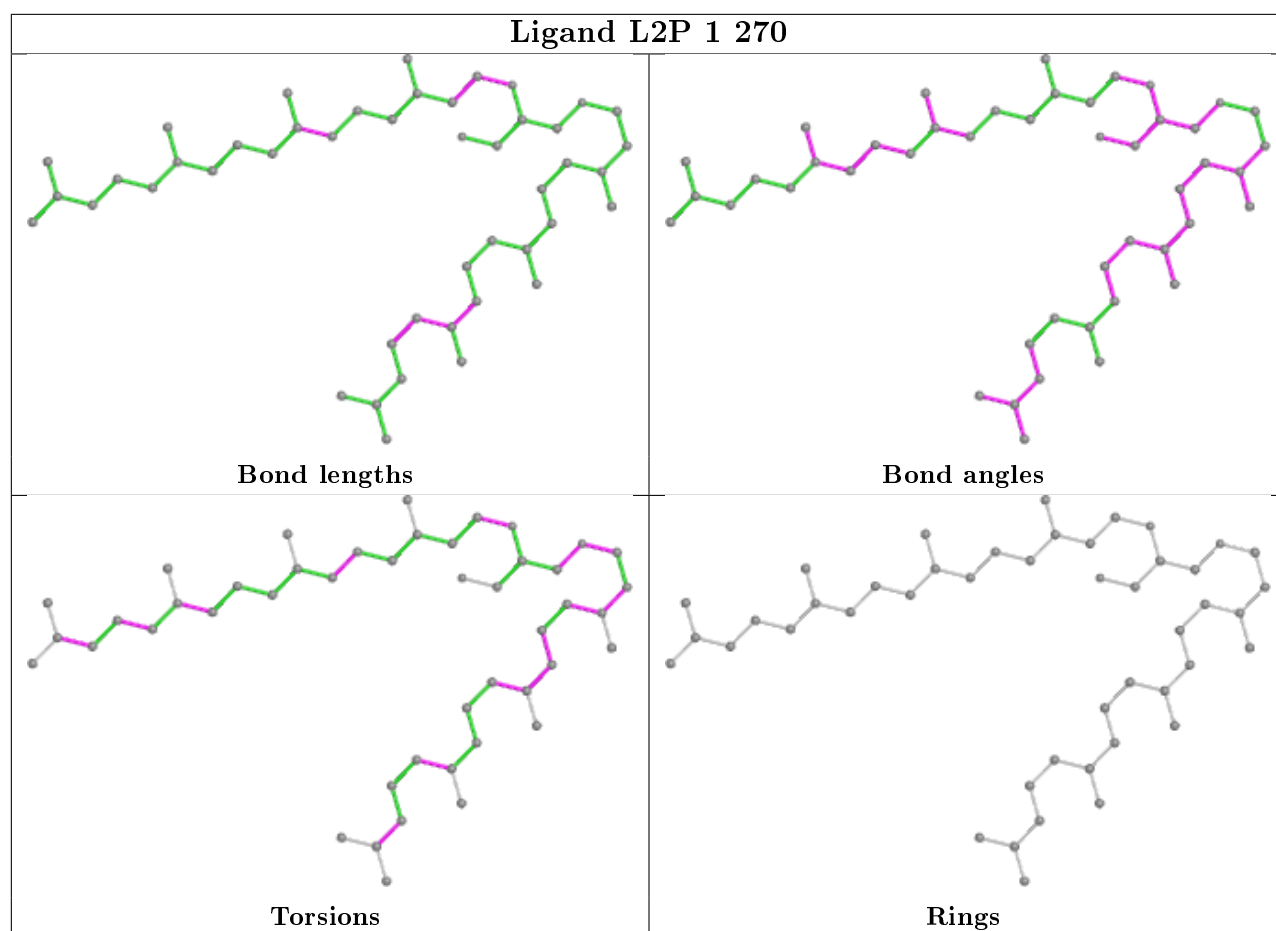


Ligand L3P 1 290



Ligand RET 1 250





5.7 Other polymers [i](#)

There are no such residues in this entry.

5.8 Polymer linkage issues [i](#)

There are no chain breaks in this entry.

6 Fit of model and data [i](#)

6.1 Protein, DNA and RNA chains [i](#)

In the following table, the column labelled ‘#RSRZ> 2’ contains the number (and percentage) of RSRZ outliers, followed by percent RSRZ outliers for the chain as percentile scores relative to all X-ray entries and entries of similar resolution. The OWAB column contains the minimum, median, 95th percentile and maximum values of the occupancy-weighted average B-factor per residue. The column labelled ‘Q< 0.9’ lists the number of (and percentage) of residues with an average occupancy less than 0.9.

Mol	Chain	Analysed	<RSRZ>	#RSRZ>2	OWAB(Å ²)	Q<0.9
1	1	227/248 (91%)	0.02	5 (2%) 62 56	28, 44, 64, 91	0

All (5) RSRZ outliers are listed below:

Mol	Chain	Res	Type	RSRZ
1	1	5	THR	9.6
1	1	203	ILE	3.1
1	1	71	PHE	2.4
1	1	199	VAL	2.3
1	1	231	GLY	2.1

6.2 Non-standard residues in protein, DNA, RNA chains [i](#)

There are no non-standard protein/DNA/RNA residues in this entry.

6.3 Carbohydrates [i](#)

In the following table, the Atoms column lists the number of modelled atoms in the group and the number defined in the chemical component dictionary. The B-factors column lists the minimum, median, 95th percentile and maximum values of B factors of atoms in the group. The column labelled ‘Q< 0.9’ lists the number of atoms with occupancy less than 0.9.

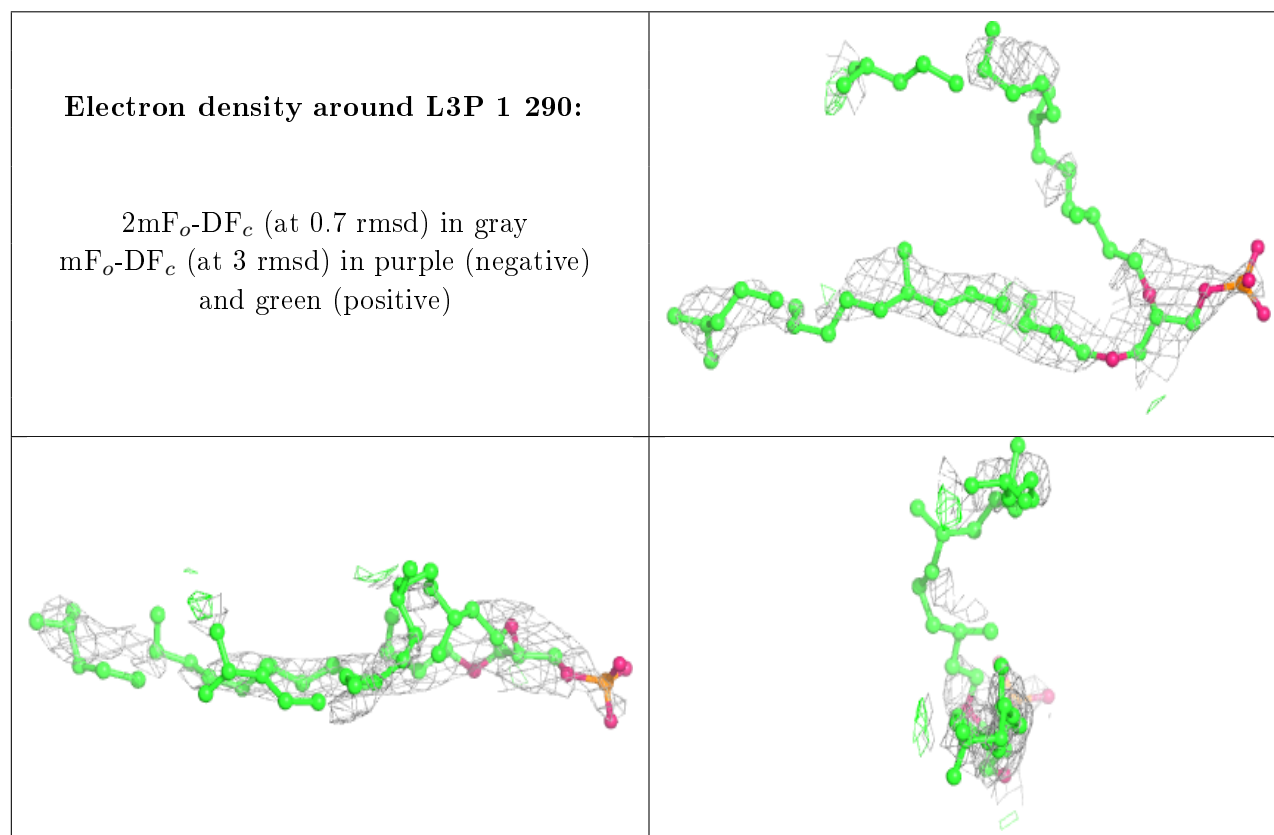
Mol	Type	Chain	Res	Atoms	RSCC	RSR	B-factors(Å ²)	Q<0.9
2	GAL	A	3	11/12	0.51	0.32	93,95,97,98	0
2	MAN	A	2	11/12	0.75	0.27	71,75,82,85	0
2	GLC	A	1	11/12	0.94	0.15	63,64,67,67	0

6.4 Ligands ⓘ

In the following table, the Atoms column lists the number of modelled atoms in the group and the number defined in the chemical component dictionary. The B-factors column lists the minimum, median, 95th percentile and maximum values of B factors of atoms in the group. The column labelled 'Q<0.9' lists the number of atoms with occupancy less than 0.9.

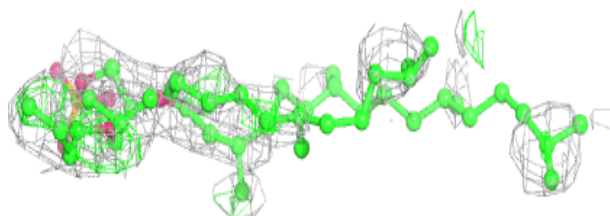
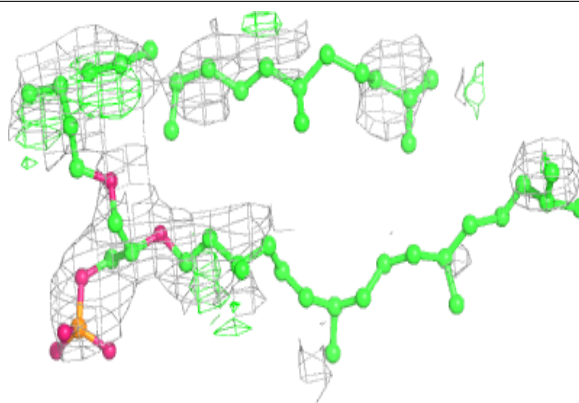
Mol	Type	Chain	Res	Atoms	RSCC	RSR	B-factors(Å ²)	Q<0.9
4	L3P	1	290	50/59	0.42	0.53	111,135,140,140	0
4	L3P	1	300	50/59	0.48	0.48	125,130,137,137	0
4	L3P	1	280	40/59	0.56	0.47	120,124,130,130	0
4	L3P	1	260	50/59	0.71	0.43	53,84,109,110	4
5	L2P	1	270	46/46	0.77	0.59	60,71,92,92	0
3	RET	1	250	20/21	0.93	0.21	27,41,45,46	0

The following is a graphical depiction of the model fit to experimental electron density of all instances of the Ligand of Interest. In addition, ligands with molecular weight > 250 and outliers as shown on the geometry validation Tables will also be included. Each fit is shown from different orientation to approximate a three-dimensional view.

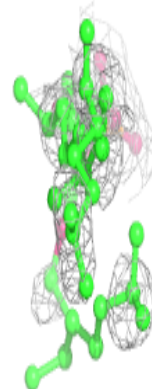
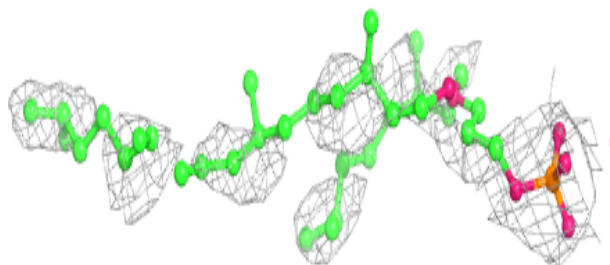
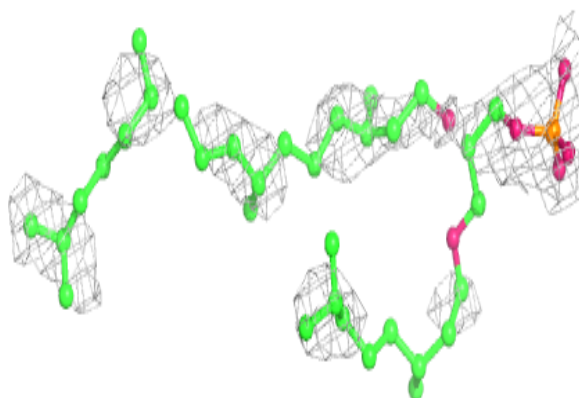


Electron density around L3P 1 300:

$2mF_o-DF_c$ (at 0.7 rmsd) in gray
 mF_o-DF_c (at 3 rmsd) in purple (negative)
and green (positive)

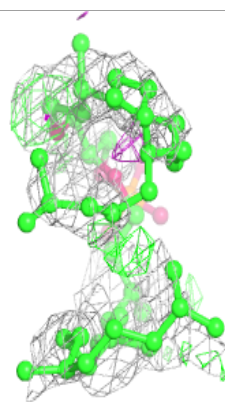
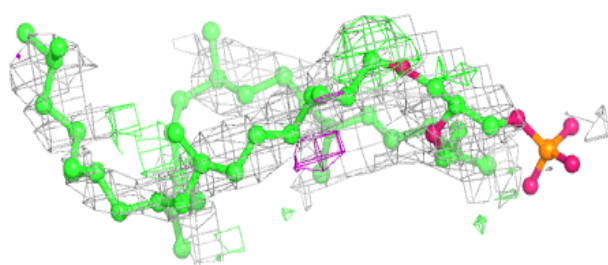
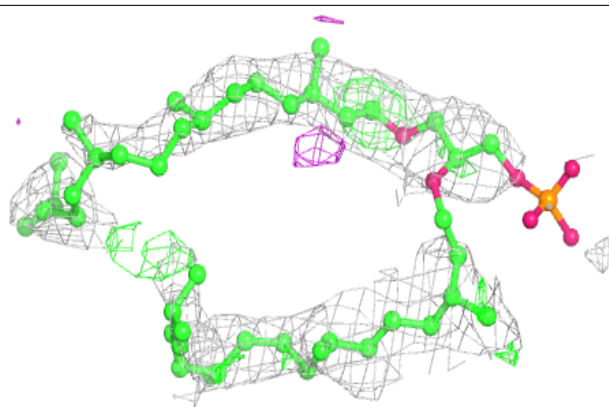
**Electron density around L3P 1 280:**

$2mF_o-DF_c$ (at 0.7 rmsd) in gray
 mF_o-DF_c (at 3 rmsd) in purple (negative)
and green (positive)

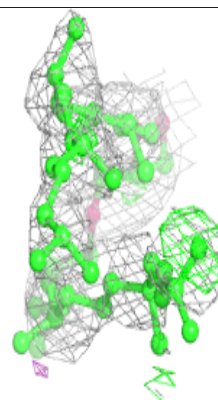
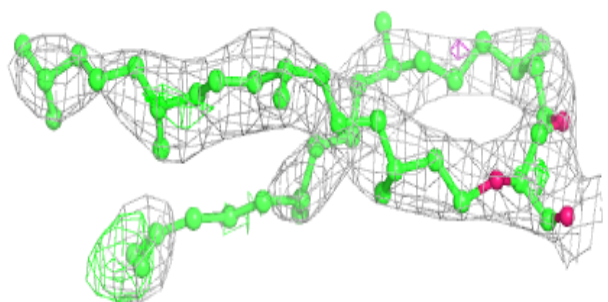
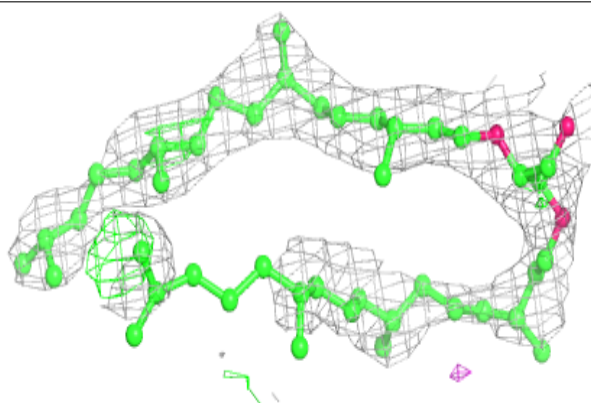


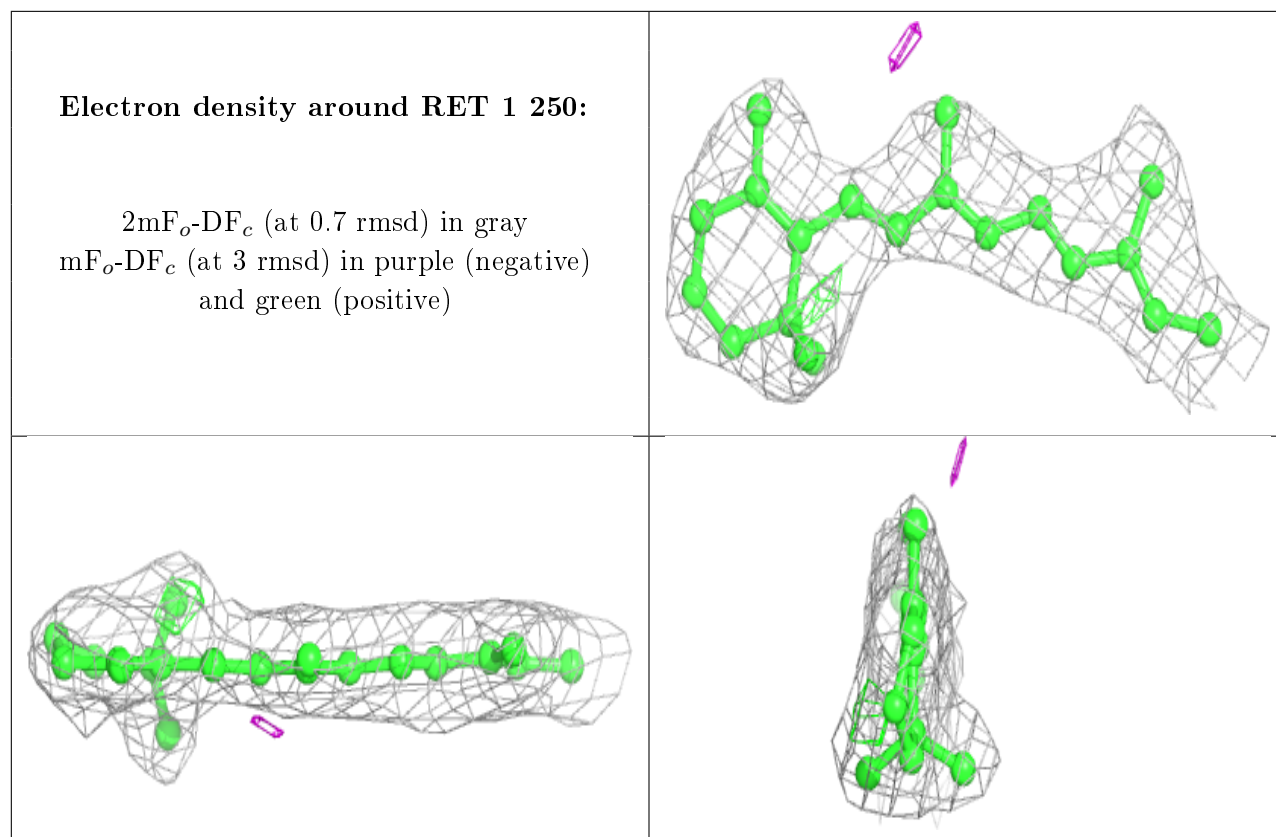
Electron density around L3P 1 260:

$2mF_o-DF_c$ (at 0.7 rmsd) in gray
 mF_o-DF_c (at 3 rmsd) in purple (negative)
and green (positive)

**Electron density around L2P 1 270:**

$2mF_o-DF_c$ (at 0.7 rmsd) in gray
 mF_o-DF_c (at 3 rmsd) in purple (negative)
and green (positive)





6.5 Other polymers [i](#)

There are no such residues in this entry.