



# Full wwPDB X-ray Structure Validation Report ⓘ

Aug 8, 2020 – 04:27 AM BST

PDB ID : 1X1V  
Title : Structure Of Banana Lectin- Methyl-Alpha-Mannose Complex  
Authors : Singh, D.D.; Saikrishnan, K.; Kumar, P.; Surolia, A.; Sekar, K.; Vijayan, M.  
Deposited on : 2005-04-14  
Resolution : 2.45 Å(reported)

This is a Full wwPDB X-ray Structure Validation Report for a publicly released PDB entry.

We welcome your comments at [validation@mail.wwpdb.org](mailto:validation@mail.wwpdb.org)

A user guide is available at

<https://www.wwpdb.org/validation/2017/XrayValidationReportHelp>

with specific help available everywhere you see the ⓘ symbol.

---

The following versions of software and data (see [references ⓘ](#)) were used in the production of this report:

MolProbity : 4.02b-467  
Mogul : 1.8.5 (274361), CSD as541be (2020)  
Xtriage (Phenix) : 1.13  
EDS : 2.13.1  
Percentile statistics : 20191225.v01 (using entries in the PDB archive December 25th 2019)  
Refmac : 5.8.0158  
CCP4 : 7.0.044 (Gargrove)  
Ideal geometry (proteins) : Engh & Huber (2001)  
Ideal geometry (DNA, RNA) : Parkinson et al. (1996)  
Validation Pipeline (wwPDB-VP) : 2.13.1

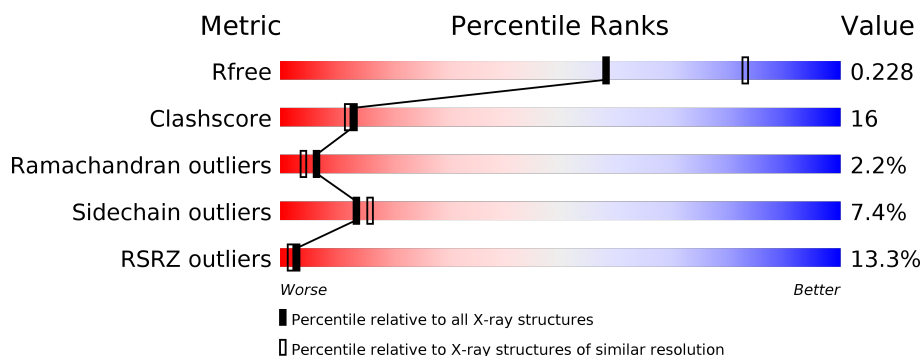
# 1 Overall quality at a glance ⓘ

The following experimental techniques were used to determine the structure:

## *X-RAY DIFFRACTION*

The reported resolution of this entry is 2.45 Å.

Percentile scores (ranging between 0-100) for global validation metrics of the entry are shown in the following graphic. The table shows the number of entries on which the scores are based.



Metric	Whole archive (#Entries)	Similar resolution (#Entries, resolution range(Å))
$R_{free}$	130704	1544 (2.48-2.44)
Clashscore	141614	1613 (2.48-2.44)
Ramachandran outliers	138981	1598 (2.48-2.44)
Sidechain outliers	138945	1598 (2.48-2.44)
RSRZ outliers	127900	1523 (2.48-2.44)

The table below summarises the geometric issues observed across the polymeric chains and their fit to the electron density. The red, orange, yellow and green segments on the lower bar indicate the fraction of residues that contain outliers for  $\geq 3$ , 2, 1 and 0 types of geometric quality criteria respectively. A grey segment represents the fraction of residues that are not modelled. The numeric value for each fraction is indicated below the corresponding segment, with a dot representing fractions  $\leq 5\%$ . The upper red bar (where present) indicates the fraction of residues that have poor fit to the electron density. The numeric value is given above the bar.

Mol	Chain	Length	Quality of chain
1	A	141	<div> <div>9%</div> <div>71%</div> <div>22%</div> <div>• • •</div> </div>
1	B	141	<div> <div>18%</div> <div>72%</div> <div>18%</div> <div>6%</div> <div>• •</div> </div>

The following table lists non-polymeric compounds, carbohydrate monomers and non-standard residues in protein, DNA, RNA chains that are outliers for geometric or electron-density-fit criteria:

Mol	Type	Chain	Res	Chirality	Geometry	Clashes	Electron density
2	MMA	A	801	X	-	-	-
2	MMA	A	803	X	-	-	-
2	MMA	A	805	X	-	X	-
2	MMA	B	802	X	-	-	-
2	MMA	B	804	X	-	-	-
4	HEZ	B	814	-	-	-	X
4	HEZ	B	815	-	-	-	X

## 2 Entry composition [i](#)

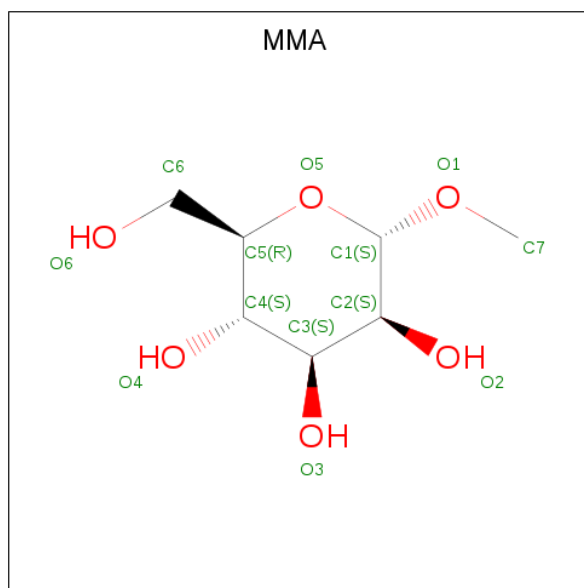
There are 5 unique types of molecules in this entry. The entry contains 2664 atoms, of which 0 are hydrogens and 0 are deuteriums.

In the tables below, the ZeroOcc column contains the number of atoms modelled with zero occupancy, the AltConf column contains the number of residues with at least one atom in alternate conformation and the Trace column contains the number of residues modelled with at most 2 atoms.

- Molecule 1 is a protein called lectin.

Mol	Chain	Residues	Atoms					ZeroOcc	AltConf	Trace
1	A	138	Total	C	N	O	S	0	0	0
			1019	659	167	191	2			
1	B	140	Total	C	N	O	S	0	0	0
			1031	665	170	194	2			

- Molecule 2 is methyl alpha-D-mannopyranoside (three-letter code: MMA) (formula:  $C_7H_{14}O_6$ ).



Mol	Chain	Residues	Atoms			ZeroOcc	AltConf
2	A	1	Total	C	O	0	0
			13	7	6		
2	A	1	Total	C	O	0	0
			13	7	6		
2	A	1	Total	C	O	0	0
			13	7	6		
2	B	1	Total	C	O	0	0
			13	7	6		

*Continued on next page...*

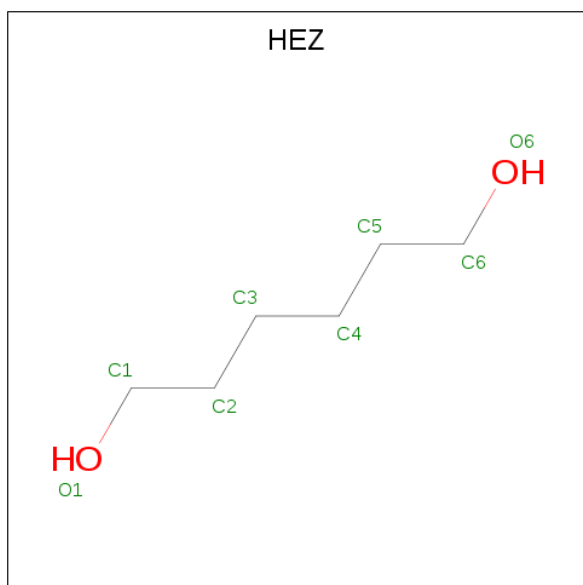
Continued from previous page...

Mol	Chain	Residues	Atoms			ZeroOcc	AltConf
2	B	1	Total	C	O	0	0
			13	7	6		

- Molecule 3 is ZINC ION (three-letter code: ZN) (formula: Zn).

Mol	Chain	Residues	Atoms		ZeroOcc	AltConf
3	B	1	Total	Zn	0	0
			1	1		
3	A	2	Total	Zn	0	0
			2	2		

- Molecule 4 is HEXANE-1,6-DIOL (three-letter code: HEZ) (formula: C<sub>6</sub>H<sub>14</sub>O<sub>2</sub>).



Mol	Chain	Residues	Atoms			ZeroOcc	AltConf
4	A	1	Total	C	O	0	0
			8	6	2		
4	A	1	Total	C	O	0	0
			8	6	2		
4	A	1	Total	C	O	0	0
			8	6	2		
4	B	1	Total	C	O	0	0
			8	6	2		
4	B	1	Total	C	O	0	0
			8	6	2		
4	B	1	Total	C	O	0	0
			8	6	2		

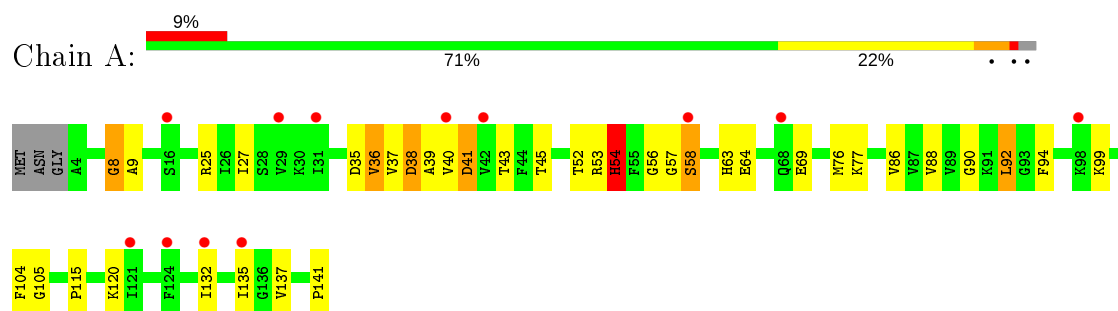
- Molecule 5 is water.

Mol	Chain	Residues	Atoms		ZeroOcc	AltConf
5	A	228	Total 228	O 228	0	0
5	B	270	Total 270	O 270	0	0

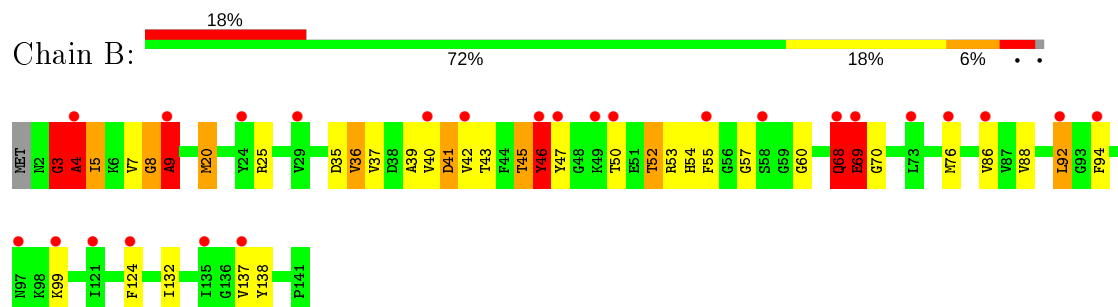
### 3 Residue-property plots [i](#)

These plots are drawn for all protein, RNA, DNA and oligosaccharide chains in the entry. The first graphic for a chain summarises the proportions of the various outlier classes displayed in the second graphic. The second graphic shows the sequence view annotated by issues in geometry and electron density. Residues are color-coded according to the number of geometric quality criteria for which they contain at least one outlier: green = 0, yellow = 1, orange = 2 and red = 3 or more. A red dot above a residue indicates a poor fit to the electron density ( $RSRZ > 2$ ). Stretches of 2 or more consecutive residues without any outlier are shown as a green connector. Residues present in the sample, but not in the model, are shown in grey.

- Molecule 1: lectin



- Molecule 1: lectin



## 4 Data and refinement statistics

Property	Value	Source
Space group	P 32 2 1	Depositor
Cell constants a, b, c, $\alpha$ , $\beta$ , $\gamma$	80.82Å 80.82Å 148.00Å 90.00° 90.00° 120.00°	Depositor
Resolution (Å)	24.92 – 2.45 24.91 – 2.45	Depositor EDS
% Data completeness (in resolution range)	(Not available) (24.92-2.45) 99.1 (24.91-2.45)	Depositor EDS
$R_{merge}$	0.07	Depositor
$R_{sym}$	(Not available)	Depositor
$\langle I/\sigma(I) \rangle$ <sup>1</sup>	3.69 (at 2.44Å)	Xtriage
Refinement program	REFMAC 5.2.0003	Depositor
R, $R_{free}$	0.224 , 0.260 0.228 , 0.228	Depositor DCC
$R_{free}$ test set	1077 reflections (5.14%)	wwPDB-VP
Wilson B-factor (Å <sup>2</sup> )	47.3	Xtriage
Anisotropy	0.512	Xtriage
Bulk solvent $k_{sol}$ (e/Å <sup>3</sup> ), $B_{sol}$ (Å <sup>2</sup> )	0.38 , 71.1	EDS
L-test for twinning <sup>2</sup>	$\langle  L  \rangle = 0.50$ , $\langle L^2 \rangle = 0.33$	Xtriage
Estimated twinning fraction	0.028 for -h,-k,l	Xtriage
$F_o, F_c$ correlation	0.93	EDS
Total number of atoms	2664	wwPDB-VP
Average B, all atoms (Å <sup>2</sup> )	52.0	wwPDB-VP

Xtriage's analysis on translational NCS is as follows: *The largest off-origin peak in the Patterson function is 4.84% of the height of the origin peak. No significant pseudotranslation is detected.*

<sup>1</sup>Intensities estimated from amplitudes.

<sup>2</sup>Theoretical values of  $\langle |L| \rangle$ ,  $\langle L^2 \rangle$  for acentric reflections are 0.5, 0.333 respectively for untwinned datasets, and 0.375, 0.2 for perfectly twinned datasets.



## 5 Model quality

### 5.1 Standard geometry

Bond lengths and bond angles in the following residue types are not validated in this section: ZN, MMA, HEZ

The Z score for a bond length (or angle) is the number of standard deviations the observed value is removed from the expected value. A bond length (or angle) with  $|Z| > 5$  is considered an outlier worth inspection. RMSZ is the root-mean-square of all Z scores of the bond lengths (or angles).

Mol	Chain	Bond lengths		Bond angles	
		RMSZ	$\# Z  > 5$	RMSZ	$\# Z  > 5$
1	A	0.79	3/1047 (0.3%)	1.23	9/1412 (0.6%)
1	B	0.48	0/1059	1.56	13/1428 (0.9%)
All	All	0.65	3/2106 (0.1%)	1.41	22/2840 (0.8%)

Chiral center outliers are detected by calculating the chiral volume of a chiral center and verifying if the center is modelled as a planar moiety or with the opposite hand. A planarity outlier is detected by checking planarity of atoms in a peptide group, atoms in a mainchain group or atoms of a sidechain that are expected to be planar.

Mol	Chain	#Chirality outliers	#Planarity outliers
1	A	0	2
1	B	1	10
All	All	1	12

All (3) bond length outliers are listed below:

Mol	Chain	Res	Type	Atoms	Z	Observed(Å)	Ideal(Å)
1	A	58	SER	C-N	-14.50	1.06	1.33
1	A	57	GLY	C-N	-10.96	1.08	1.34
1	A	53	ARG	C-N	9.61	1.56	1.34

All (22) bond angle outliers are listed below:

Mol	Chain	Res	Type	Atoms	Z	Observed(°)	Ideal(°)
1	B	68	GLN	O-C-N	-35.10	66.53	122.70
1	A	58	SER	O-C-N	-29.95	72.28	123.20
1	B	69	GLU	CA-CB-CG	18.47	154.04	113.40
1	B	3	GLY	O-C-N	-16.66	96.05	122.70
1	B	4	ALA	O-C-N	-13.84	100.55	122.70
1	A	58	SER	CA-C-N	12.13	140.46	116.20

*Continued on next page...*

*Continued from previous page...*

Mol	Chain	Res	Type	Atoms	Z	Observed(°)	Ideal(°)
1	A	57	GLY	C-N-CA	11.47	150.38	121.70
1	B	68	GLN	CA-C-N	10.68	140.69	117.20
1	B	69	GLU	CB-CA-C	10.45	131.29	110.40
1	B	46	TYR	O-C-N	-10.07	106.58	122.70
1	B	69	GLU	CA-C-N	-9.87	96.46	116.20
1	B	9	ALA	CA-C-N	-9.33	96.67	117.20
1	A	57	GLY	O-C-N	-9.14	108.07	122.70
1	B	3	GLY	CA-C-N	8.57	136.06	117.20
1	B	9	ALA	O-C-N	7.71	135.03	122.70
1	A	38	ASP	CB-CG-OD2	6.77	124.39	118.30
1	B	35	ASP	CB-CG-OD2	6.20	123.88	118.30
1	B	41	ASP	CB-CG-OD2	6.16	123.84	118.30
1	A	41	ASP	CB-CG-OD2	5.99	123.69	118.30
1	A	54	HIS	N-CA-CB	5.82	121.07	110.60
1	A	57	GLY	CA-C-N	5.41	129.10	117.20
1	A	35	ASP	CB-CG-OD2	5.08	122.87	118.30

All (1) chirality outliers are listed below:

Mol	Chain	Res	Type	Atom
1	B	69	GLU	CA

All (12) planarity outliers are listed below:

Mol	Chain	Res	Type	Group
1	A	58	SER	Mainchain
1	A	8	GLY	Peptide
1	B	3	GLY	Mainchain,Peptide
1	B	4	ALA	Mainchain
1	B	45	THR	Mainchain
1	B	46	TYR	Mainchain
1	B	68	GLN	Mainchain,Peptide
1	B	69	GLU	Mainchain
1	B	8	GLY	Peptide
1	B	9	ALA	Mainchain

## 5.2 Too-close contacts

In the following table, the Non-H and H(model) columns list the number of non-hydrogen atoms and hydrogen atoms in the chain respectively. The H(added) column lists the number of hydrogen atoms added and optimized by MolProbity. The Clashes column lists the number of clashes within

the asymmetric unit, whereas Symm-Clashes lists symmetry related clashes.

Mol	Chain	Non-H	H(model)	H(added)	Clashes	Symm-Clashes
1	A	1019	0	979	39	0
1	B	1031	0	990	33	1
2	A	39	0	39	12	0
2	B	26	0	25	1	0
3	A	2	0	0	0	0
3	B	1	0	0	0	0
4	A	24	0	42	1	0
4	B	24	0	42	0	0
5	A	228	0	0	4	1
5	B	270	0	0	0	0
All	All	2664	0	2117	70	1

The all-atom clashscore is defined as the number of clashes found per 1000 atoms (including hydrogen atoms). The all-atom clashscore for this structure is 16.

All (70) close contacts within the same asymmetric unit are listed below, sorted by their clash magnitude.

Atom-1	Atom-2	Interatomic distance (Å)	Clash overlap (Å)
1:A:41:ASP:OD1	1:A:54:HIS:HB2	1.64	0.98
1:B:3:GLY:O	1:B:5:ILE:N	2.00	0.94
1:B:40:VAL:HG23	1:B:132:ILE:HD11	1.63	0.78
1:B:46:TYR:CE2	1:B:47:TYR:CD1	2.74	0.75
1:A:141:PRO:HB3	1:B:3:GLY:HA2	1.71	0.72
1:A:43:THR:HG22	1:A:52:THR:HG22	1.70	0.72
1:A:105:GLY:N	2:A:805:MMA:H71	2.07	0.70
1:A:38:ASP:O	1:A:56:GLY:O	2.10	0.69
1:A:64:GLU:OE2	5:A:229:HOH:O	2.11	0.69
1:A:41:ASP:OD1	1:A:54:HIS:CB	2.40	0.68
1:B:45:THR:HG22	1:B:50:THR:HG22	1.75	0.67
1:B:46:TYR:CE2	1:B:47:TYR:HD1	2.11	0.66
1:A:40:VAL:HG23	1:A:132:ILE:CD1	2.27	0.65
1:A:43:THR:CG2	1:A:52:THR:HG22	2.26	0.65
1:A:76:MET:HE2	1:A:92:LEU:HD21	1.80	0.64
1:A:40:VAL:HG23	1:A:132:ILE:HD11	1.82	0.62
1:B:40:VAL:HG23	1:B:132:ILE:CD1	2.30	0.61
1:A:105:GLY:H	2:A:805:MMA:C7	2.12	0.61
1:A:39:ALA:HB1	1:A:54:HIS:CE1	2.35	0.61
1:B:4:ALA:HB1	1:B:138:TYR:CD2	2.36	0.60
1:A:39:ALA:CB	1:A:54:HIS:CE1	2.83	0.60
1:B:46:TYR:CD2	1:B:47:TYR:HD1	2.19	0.59

*Continued on next page...*

*Continued from previous page...*

Atom-1	Atom-2	Interatomic distance (Å)	Clash overlap (Å)
2:A:805:MMA:H72	5:A:295:HOH:O	2.01	0.59
1:A:27:ILE:HD11	1:A:45:THR:HG23	1.85	0.59
1:B:20:MET:CE	1:B:124:PHE:HD2	2.16	0.58
1:A:104:PHE:HA	2:A:805:MMA:H73	1.87	0.57
1:A:105:GLY:H	2:A:805:MMA:H71	1.70	0.57
1:B:41:ASP:OD1	1:B:54:HIS:HA	2.04	0.56
1:B:20:MET:HE1	1:B:42:VAL:HG11	1.87	0.56
1:B:39:ALA:HB1	1:B:55:PHE:O	2.06	0.56
1:A:63:HIS:NE2	2:A:805:MMA:H3	2.21	0.56
1:A:63:HIS:CE1	2:A:805:MMA:H3	2.42	0.55
1:B:43:THR:HG22	1:B:52:THR:CG2	2.37	0.54
1:B:20:MET:CE	1:B:42:VAL:HG11	2.37	0.54
1:B:86:VAL:HG12	1:B:88:VAL:HG13	1.90	0.54
1:A:63:HIS:NE2	2:A:805:MMA:H5	2.24	0.53
1:B:42:VAL:O	1:B:52:THR:HA	2.09	0.53
1:B:46:TYR:CE2	1:B:47:TYR:CE1	2.96	0.52
1:B:4:ALA:HB1	1:B:138:TYR:CE2	2.46	0.51
1:B:68:GLN:O	1:B:70:GLY:N	2.44	0.50
1:A:76:MET:HE2	1:A:94:PHE:CZ	2.48	0.48
1:A:115:PRO:HG2	1:B:8:GLY:HA2	1.95	0.48
1:B:46:TYR:CD2	1:B:47:TYR:CD1	3.02	0.46
1:B:37:VAL:CG1	1:B:132:ILE:HD12	2.45	0.46
1:A:37:VAL:HG21	1:A:92:LEU:HB2	1.97	0.46
1:B:43:THR:HG22	1:B:52:THR:HB	1.98	0.46
1:A:77:LYS:NZ	4:A:812:HEZ:H31	2.32	0.45
1:A:43:THR:HG23	5:A:294:HOH:O	2.17	0.45
1:A:63:HIS:NE2	2:A:805:MMA:C4	2.80	0.45
1:B:4:ALA:HB1	1:B:138:TYR:HD2	1.79	0.45
1:A:105:GLY:N	2:A:805:MMA:C7	2.73	0.45
1:A:36:VAL:HG22	1:A:90:GLY:HA2	1.99	0.44
1:A:8:GLY:O	1:A:9:ALA:HB3	2.18	0.44
1:A:64:GLU:OE1	5:A:451:HOH:O	2.20	0.44
1:A:76:MET:HE1	1:A:135:ILE:HG21	2.00	0.43
1:A:76:MET:CE	1:A:92:LEU:HD21	2.47	0.43
1:A:43:THR:CB	1:A:52:THR:HG22	2.48	0.43
1:A:39:ALA:C	1:A:132:ILE:HD11	2.39	0.42
1:A:86:VAL:HG12	1:A:88:VAL:HG13	2.01	0.42
1:A:63:HIS:CD2	2:A:805:MMA:HO4	2.35	0.42
1:A:37:VAL:CG1	1:A:132:ILE:HD12	2.49	0.41
1:A:141:PRO:HB3	1:B:3:GLY:CA	2.47	0.41
1:B:20:MET:HB3	1:B:55:PHE:HZ	1.85	0.41

*Continued on next page...*

Continued from previous page...

Atom-1	Atom-2	Interatomic distance (Å)	Clash overlap (Å)
1:B:36:VAL:HG13	1:B:37:VAL:N	2.35	0.41
1:B:60:GLY:HA2	2:B:802:MMA:O3	2.20	0.41
1:A:63:HIS:NE2	2:A:805:MMA:O4	2.40	0.41
1:B:76:MET:HG3	1:B:94:PHE:CE2	2.55	0.41
1:B:37:VAL:HG21	1:B:92:LEU:HB2	2.02	0.41
1:B:37:VAL:HG11	1:B:132:ILE:HD12	2.02	0.41
1:B:39:ALA:HB2	1:B:57:GLY:O	2.21	0.40

All (1) symmetry-related close contacts are listed below. The label for Atom-2 includes the symmetry operator and encoded unit-cell translations to be applied.

Atom-1	Atom-2	Interatomic distance (Å)	Clash overlap (Å)
1:B:53:ARG:O	5:A:322:HOH:O[6_665]	2.12	0.08

## 5.3 Torsion angles [i](#)

### 5.3.1 Protein backbone [i](#)

In the following table, the Percentiles column shows the percent Ramachandran outliers of the chain as a percentile score with respect to all X-ray entries followed by that with respect to entries of similar resolution.

The Analysed column shows the number of residues for which the backbone conformation was analysed, and the total number of residues.

Mol	Chain	Analysed	Favoured	Allowed	Outliers	Percentiles	
1	A	136/141 (96%)	126 (93%)	8 (6%)	2 (2%)	10	9
1	B	138/141 (98%)	129 (94%)	5 (4%)	4 (3%)	4	2
All	All	274/282 (97%)	255 (93%)	13 (5%)	6 (2%)	6	4

All (6) Ramachandran outliers are listed below:

Mol	Chain	Res	Type
1	B	5	ILE
1	A	54	HIS
1	B	4	ALA
1	B	9	ALA
1	B	46	TYR
1	A	69	GLU

### 5.3.2 Protein sidechains ⓘ

In the following table, the Percentiles column shows the percent sidechain outliers of the chain as a percentile score with respect to all X-ray entries followed by that with respect to entries of similar resolution.

The Analysed column shows the number of residues for which the sidechain conformation was analysed, and the total number of residues.

Mol	Chain	Analysed	Rotameric	Outliers	Percentiles	
1	A	101/103 (98%)	95 (94%)	6 (6%)	19	25
1	B	102/103 (99%)	93 (91%)	9 (9%)	10	11
All	All	203/206 (98%)	188 (93%)	15 (7%)	13	16

All (15) residues with a non-rotameric sidechain are listed below:

Mol	Chain	Res	Type
1	A	25	ARG
1	A	36	VAL
1	A	92	LEU
1	A	99	LYS
1	A	120	LYS
1	A	137	VAL
1	B	7	VAL
1	B	20	MET
1	B	25	ARG
1	B	36	VAL
1	B	52	THR
1	B	69	GLU
1	B	92	LEU
1	B	99	LYS
1	B	137	VAL

Some sidechains can be flipped to improve hydrogen bonding and reduce clashes. There are no such sidechains identified.

### 5.3.3 RNA ⓘ

There are no RNA molecules in this entry.

## 5.4 Non-standard residues in protein, DNA, RNA chains ⓘ

There are no non-standard protein/DNA/RNA residues in this entry.

## 5.5 Carbohydrates

There are no monosaccharides in this entry.

## 5.6 Ligand geometry

Of 14 ligands modelled in this entry, 3 are monoatomic - leaving 11 for Mogul analysis.

In the following table, the Counts columns list the number of bonds (or angles) for which Mogul statistics could be retrieved, the number of bonds (or angles) that are observed in the model and the number of bonds (or angles) that are defined in the Chemical Component Dictionary. The Link column lists molecule types, if any, to which the group is linked. The Z score for a bond length (or angle) is the number of standard deviations the observed value is removed from the expected value. A bond length (or angle) with  $|Z| > 2$  is considered an outlier worth inspection. RMSZ is the root-mean-square of all Z scores of the bond lengths (or angles).

Mol	Type	Chain	Res	Link	Bond lengths			Bond angles		
					Counts	RMSZ	$\# Z  > 2$	Counts	RMSZ	$\# Z  > 2$
4	HEZ	B	815	-	7,7,7	0.33	0	6,6,6	0.38	0
4	HEZ	A	811	-	7,7,7	0.35	0	6,6,6	0.37	0
2	MMA	B	802	-	13,13,13	0.55	0	18,18,18	3.55	8 (44%)
4	HEZ	A	812	-	7,7,7	0.34	0	6,6,6	0.37	0
2	MMA	A	805	-	13,13,13	0.62	0	18,18,18	3.17	6 (33%)
4	HEZ	B	814	-	7,7,7	0.33	0	6,6,6	0.32	0
2	MMA	B	804	-	13,13,13	0.58	0	18,18,18	4.74	8 (44%)
2	MMA	A	801	-	13,13,13	0.60	0	18,18,18	3.27	8 (44%)
4	HEZ	A	813	-	7,7,7	0.33	0	6,6,6	0.36	0
2	MMA	A	803	-	13,13,13	0.62	0	18,18,18	3.46	7 (38%)
4	HEZ	B	816	-	7,7,7	0.34	0	6,6,6	0.39	0

In the following table, the Chirals column lists the number of chiral outliers, the number of chiral centers analysed, the number of these observed in the model and the number defined in the Chemical Component Dictionary. Similar counts are reported in the Torsion and Rings columns. '-' means no outliers of that kind were identified.

Mol	Type	Chain	Res	Link	Chirals	Torsions	Rings
4	HEZ	B	815	-	-	3/5/5/5	-
4	HEZ	A	811	-	-	3/5/5/5	-
2	MMA	B	802	-	1/1/5/5	1/4/24/24	0/1/1/1
4	HEZ	A	812	-	-	1/5/5/5	-
2	MMA	A	805	-	1/1/5/5	1/4/24/24	0/1/1/1
4	HEZ	B	814	-	-	3/5/5/5	-
2	MMA	B	804	-	1/1/5/5	1/4/24/24	0/1/1/1

*Continued on next page...*

*Continued from previous page...*

Mol	Type	Chain	Res	Link	Chirals	Torsions	Rings
2	MMA	A	801	-	1/1/5/5	1/4/24/24	0/1/1/1
4	HEZ	A	813	-	-	2/5/5/5	-
2	MMA	A	803	-	1/1/5/5	1/4/24/24	0/1/1/1
4	HEZ	B	816	-	-	1/5/5/5	-

There are no bond length outliers.

All (37) bond angle outliers are listed below:

Mol	Chain	Res	Type	Atoms	Z	Observed(°)	Ideal(°)
2	B	804	MMA	O1-C1-C2	11.45	121.56	108.15
2	B	804	MMA	O4-C4-C5	11.27	137.27	109.30
2	A	803	MMA	O1-C1-C2	10.80	120.81	108.15
2	A	805	MMA	O1-C1-C2	10.74	120.73	108.15
2	B	802	MMA	O1-C1-C2	9.64	119.45	108.15
2	A	801	MMA	O1-C1-C2	9.41	119.18	108.15
2	B	804	MMA	O4-C4-C3	-7.63	92.71	110.35
2	B	802	MMA	O5-C1-O1	5.60	123.95	110.97
2	B	802	MMA	C7-O1-C1	5.42	121.63	113.27
2	B	804	MMA	C7-O1-C1	5.12	121.17	113.27
2	B	802	MMA	O3-C3-C4	-5.04	98.69	110.35
2	B	804	MMA	O5-C1-O1	4.96	122.48	110.97
2	A	801	MMA	O5-C1-O1	4.96	122.47	110.97
2	A	803	MMA	O5-C1-O1	4.83	122.17	110.97
2	A	805	MMA	O5-C1-C2	4.72	120.33	110.35
2	A	801	MMA	C7-O1-C1	4.65	120.45	113.27
2	A	803	MMA	C7-O1-C1	4.44	120.13	113.27
2	A	801	MMA	C1-O5-C5	-4.34	105.18	113.69
2	A	803	MMA	C1-C2-C3	-3.96	101.75	110.00
2	B	802	MMA	C1-O5-C5	-3.81	106.21	113.69
2	A	803	MMA	O4-C4-C5	3.80	118.72	109.30
2	B	804	MMA	C1-C2-C3	-3.71	102.26	110.00
2	B	802	MMA	C1-C2-C3	-3.69	102.30	110.00
2	A	801	MMA	O5-C1-C2	3.61	117.99	110.35
2	A	805	MMA	O5-C1-O1	3.42	118.89	110.97
2	B	804	MMA	C1-O5-C5	-3.34	107.12	113.69
2	A	803	MMA	C1-O5-C5	-3.22	107.36	113.69
2	A	805	MMA	C7-O1-C1	3.10	118.06	113.27
2	A	803	MMA	O5-C1-C2	3.02	116.75	110.35
2	A	801	MMA	C1-C2-C3	-2.86	104.04	110.00
2	B	802	MMA	O5-C1-C2	2.67	116.00	110.35
2	B	804	MMA	O5-C1-C2	2.62	115.89	110.35
2	A	805	MMA	C1-O5-C5	-2.58	108.62	113.69

*Continued on next page...*



*Continued from previous page...*

Mol	Chain	Res	Type	Atoms	Z	Observed( $^{\circ}$ )	Ideal( $^{\circ}$ )
2	A	801	MMA	O5-C5-C6	2.50	112.66	106.44
2	A	805	MMA	C1-C2-C3	-2.28	105.24	110.00
2	A	801	MMA	C3-C4-C5	2.10	113.98	110.24
2	B	802	MMA	O5-C5-C6	2.06	111.56	106.44

All (5) chirality outliers are listed below:

Mol	Chain	Res	Type	Atom
2	B	802	MMA	C1
2	A	805	MMA	C1
2	B	804	MMA	C1
2	A	801	MMA	C1
2	A	803	MMA	C1

All (18) torsion outliers are listed below:

Mol	Chain	Res	Type	Atoms
2	B	802	MMA	O5-C1-O1-C7
2	A	805	MMA	O5-C1-O1-C7
2	B	804	MMA	O5-C1-O1-C7
2	A	801	MMA	O5-C1-O1-C7
2	A	803	MMA	O5-C1-O1-C7
4	B	815	HEZ	C2-C3-C4-C5
4	A	811	HEZ	C1-C2-C3-C4
4	A	813	HEZ	C3-C4-C5-C6
4	B	814	HEZ	C2-C3-C4-C5
4	A	813	HEZ	C1-C2-C3-C4
4	B	815	HEZ	O1-C1-C2-C3
4	A	811	HEZ	O1-C1-C2-C3
4	A	811	HEZ	C4-C5-C6-O6
4	A	812	HEZ	C4-C5-C6-O6
4	B	814	HEZ	C4-C5-C6-O6
4	B	815	HEZ	C4-C5-C6-O6
4	B	814	HEZ	O1-C1-C2-C3
4	B	816	HEZ	C2-C3-C4-C5

There are no ring outliers.

3 monomers are involved in 14 short contacts:

Mol	Chain	Res	Type	Clashes	Symm-Clashes
2	B	802	MMA	1	0

*Continued on next page...*

*Continued from previous page...*

Mol	Chain	Res	Type	Clashes	Symm-Clashes
4	A	812	HEZ	1	0
2	A	805	MMA	12	0

## 5.7 Other polymers [i](#)

There are no such residues in this entry.

## 5.8 Polymer linkage issues [i](#)

The following chains have linkage breaks:

Mol	Chain	Number of breaks
1	A	2

All chain breaks are listed below:

Model	Chain	Residue-1	Atom-1	Residue-2	Atom-2	Distance (Å)
1	A	57:GLY	C	58:SER	N	1.08
1	A	58:SER	C	59:GLY	N	1.06

## 6 Fit of model and data

### 6.1 Protein, DNA and RNA chains

In the following table, the column labelled ‘#RSRZ> 2’ contains the number (and percentage) of RSRZ outliers, followed by percent RSRZ outliers for the chain as percentile scores relative to all X-ray entries and entries of similar resolution. The OWAB column contains the minimum, median, 95<sup>th</sup> percentile and maximum values of the occupancy-weighted average B-factor per residue. The column labelled ‘Q< 0.9’ lists the number of (and percentage) of residues with an average occupancy less than 0.9.

Mol	Chain	Analysed	<RSRZ>	#RSRZ>2	OWAB(Å <sup>2</sup> )	Q<0.9
1	A	138/141 (97%)	0.58	12 (8%) <b>10</b> <b>7</b>	39, 46, 52, 56	0
1	B	140/141 (99%)	0.86	25 (17%) <b>1</b> <b>0</b>	43, 51, 64, 67	0
All	All	278/282 (98%)	0.72	37 (13%) <b>3</b> <b>2</b>	39, 48, 61, 67	0

All (37) RSRZ outliers are listed below:

Mol	Chain	Res	Type	RSRZ
1	B	46	TYR	5.9
1	B	47	TYR	4.8
1	B	49	LYS	4.2
1	B	68	GLN	4.0
1	B	135	ILE	4.0
1	B	69	GLU	3.9
1	B	50	THR	3.7
1	B	94	PHE	3.6
1	B	86	VAL	3.6
1	A	135	ILE	3.6
1	A	132	ILE	3.4
1	B	124	PHE	3.3
1	A	40	VAL	3.3
1	B	4	ALA	3.2
1	B	42	VAL	3.1
1	B	73	LEU	2.9
1	A	58	SER	2.8
1	B	40	VAL	2.6
1	A	68	GLN	2.6
1	B	92	LEU	2.6
1	A	98	LYS	2.5
1	B	55	PHE	2.5
1	B	99	LYS	2.5
1	B	121	ILE	2.4

*Continued on next page...*

*Continued from previous page...*

Mol	Chain	Res	Type	RSRZ
1	B	76	MET	2.4
1	A	29	VAL	2.4
1	B	137	VAL	2.4
1	A	31	ILE	2.3
1	A	124	PHE	2.3
1	A	121	ILE	2.2
1	A	16	SER	2.2
1	B	24	TYR	2.2
1	B	97	ASN	2.2
1	B	29	VAL	2.1
1	A	42	VAL	2.1
1	B	58	SER	2.1
1	B	9	ALA	2.0

## 6.2 Non-standard residues in protein, DNA, RNA chains ⓘ

There are no non-standard protein/DNA/RNA residues in this entry.

## 6.3 Carbohydrates ⓘ

There are no monosaccharides in this entry.

## 6.4 Ligands ⓘ

In the following table, the Atoms column lists the number of modelled atoms in the group and the number defined in the chemical component dictionary. The B-factors column lists the minimum, median, 95<sup>th</sup> percentile and maximum values of B factors of atoms in the group. The column labelled 'Q< 0.9' lists the number of atoms with occupancy less than 0.9.

Mol	Type	Chain	Res	Atoms	RSCC	RSR	B-factors(Å <sup>2</sup> )	Q<0.9
4	HEZ	B	815	8/8	0.22	0.50	89,89,89,89	0
4	HEZ	B	814	8/8	0.50	0.41	86,88,88,88	0
4	HEZ	A	813	8/8	0.50	0.35	85,86,86,86	0
4	HEZ	A	812	8/8	0.69	0.30	72,74,76,77	0
3	ZN	A	903	1/1	0.70	0.12	83,83,83,83	0
4	HEZ	B	816	8/8	0.80	0.31	77,78,79,80	0
2	MMA	A	805	13/13	0.81	0.30	62,63,63,64	0
4	HEZ	A	811	8/8	0.81	0.26	63,64,66,66	0
2	MMA	B	804	13/13	0.81	0.23	42,45,46,46	0
2	MMA	A	801	13/13	0.92	0.19	33,34,37,37	0

*Continued on next page...*

*Continued from previous page...*

Mol	Type	Chain	Res	Atoms	RSCC	RSR	B-factors( $\text{\AA}^2$ )	Q<0.9
2	MMA	A	803	13/13	0.93	0.13	45,48,49,49	0
2	MMA	B	802	13/13	0.93	0.17	44,48,50,50	0
3	ZN	A	901	1/1	0.97	0.06	58,58,58,58	0
3	ZN	B	902	1/1	0.99	0.09	52,52,52,52	0

## 6.5 Other polymers [i](#)

There are no such residues in this entry.