



Full wwPDB X-ray Structure Validation Report ⓘ

May 29, 2020 – 04:51 pm BST

PDB ID : 2X2M
Title : Crystal Structure of phosphorylated RET tyrosine kinase domain with inhibitor
Authors : Knowles, P.P.; Murray-Rust, J.; Kjaer, S.; McDonald, N.Q.
Deposited on : 2010-01-13
Resolution : 2.50 Å(reported)

This is a Full wwPDB X-ray Structure Validation Report for a publicly released PDB entry.

We welcome your comments at validation@mail.wwpdb.org

A user guide is available at

<https://www.wwpdb.org/validation/2017/XrayValidationReportHelp>

with specific help available everywhere you see the ⓘ symbol.

The following versions of software and data (see [references ⓘ](#)) were used in the production of this report:

MolProbity	:	4.02b-467
Mogul	:	1.8.5 (274361), CSD as541be (2020)
Xtriage (Phenix)	:	1.13
EDS	:	2.11
Percentile statistics	:	20191225.v01 (using entries in the PDB archive December 25th 2019)
Refmac	:	5.8.0158
CCP4	:	7.0.044 (Gargrove)
Ideal geometry (proteins)	:	Engh & Huber (2001)
Ideal geometry (DNA, RNA)	:	Parkinson et al. (1996)
Validation Pipeline (wwPDB-VP)	:	2.11

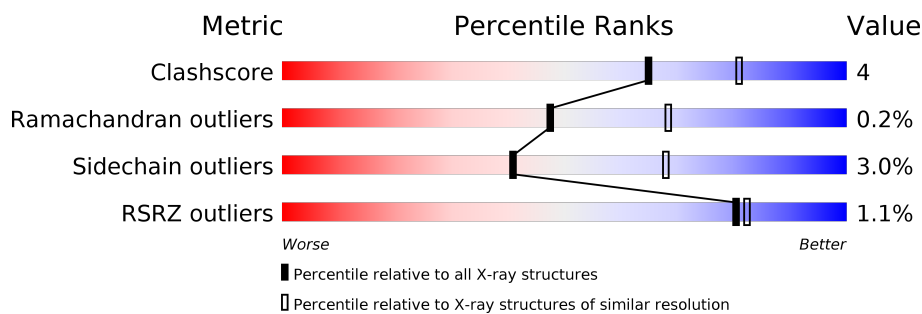
1 Overall quality at a glance

The following experimental techniques were used to determine the structure:

X-RAY DIFFRACTION

The reported resolution of this entry is 2.50 Å.

Percentile scores (ranging between 0-100) for global validation metrics of the entry are shown in the following graphic. The table shows the number of entries on which the scores are based.



Metric	Whole archive (#Entries)	Similar resolution (#Entries, resolution range(Å))
Clashscore	141614	5346 (2.50-2.50)
Ramachandran outliers	138981	5231 (2.50-2.50)
Sidechain outliers	138945	5233 (2.50-2.50)
RSRZ outliers	127900	4559 (2.50-2.50)

The table below summarises the geometric issues observed across the polymeric chains and their fit to the electron density. The red, orange, yellow and green segments on the lower bar indicate the fraction of residues that contain outliers for ≥ 3 , 2, 1 and 0 types of geometric quality criteria respectively. A grey segment represents the fraction of residues that are not modelled. The numeric value for each fraction is indicated below the corresponding segment, with a dot representing fractions $\leq 5\%$. The upper red bar (where present) indicates the fraction of residues that have poor fit to the electron density. The numeric value is given above the bar.

Mol	Chain	Length	Quality of chain
1	A	314	<div> <div>%</div> <div> <div></div> <div>79%</div> <div>12%</div> <div>9%</div> </div> </div>
1	B	314	<div> <div>%</div> <div> <div></div> <div>79%</div> <div>10%</div> <div>11%</div> </div> </div>

The following table lists non-polymeric compounds, carbohydrate monomers and non-standard residues in protein, DNA, RNA chains that are outliers for geometric or electron-density-fit criteria:

Mol	Type	Chain	Res	Chirality	Geometry	Clashes	Electron density
2	FMT	B	2012	-	-	X	-

2 Entry composition [i](#)

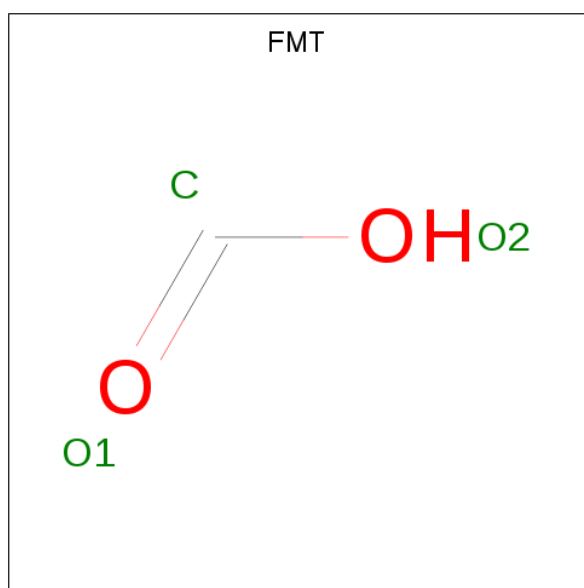
There are 4 unique types of molecules in this entry. The entry contains 4423 atoms, of which 0 are hydrogens and 0 are deuteriums.

In the tables below, the ZeroOcc column contains the number of atoms modelled with zero occupancy, the AltConf column contains the number of residues with at least one atom in alternate conformation and the Trace column contains the number of residues modelled with at most 2 atoms.

- Molecule 1 is a protein called PROTO-ONCOGENE TYROSINE-PROTEIN KINASE RECEPTOR RET.

Mol	Chain	Residues	Atoms						ZeroOcc	AltConf	Trace
1	A	287	Total	C	N	O	P	S	0	0	0
			2184	1417	371	382	1	13			
1	B	280	Total	C	N	O	P	S	0	0	0
			2143	1391	362	376	1	13			

- Molecule 2 is FORMIC ACID (three-letter code: FMT) (formula: CH₂O₂).



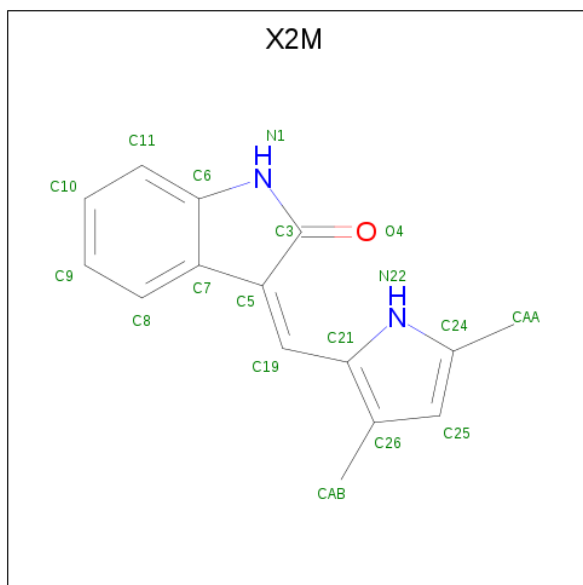
Mol	Chain	Residues	Atoms			ZeroOcc	AltConf
2	A	1	Total	C	O	0	0
			3	1	2		
2	A	1	Total	C	O	0	0
			3	1	2		
2	B	1	Total	C	O	0	0
			3	1	2		
2	B	1	Total	C	O	0	0
			3	1	2		

Continued on next page...

Continued from previous page...

Mol	Chain	Residues	Atoms			ZeroOcc	AltConf
2	B	1	Total	C	O	0	0
			3	1	2		

- Molecule 3 is (3Z)-3-[(3,5-DIMETHYL-1H-PYRROL-2-YL)METHYLIDENE]-1,3-DIHYDRO-2H-INDOL-2-ONE (three-letter code: X2M) (formula: C₁₅H₁₄N₂O).



Mol	Chain	Residues	Atoms				ZeroOcc	AltConf
3	A	1	Total	C	N	O	0	0
			18	15	2	1		
3	B	1	Total	C	N	O	0	0
			18	15	2	1		

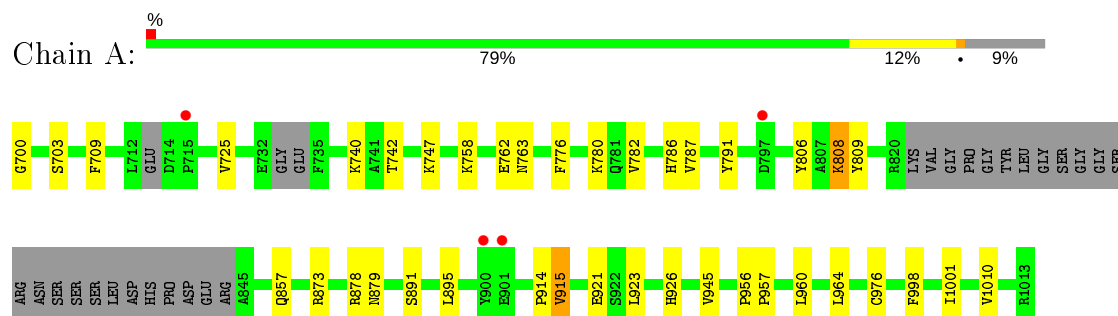
- Molecule 4 is water.

Mol	Chain	Residues	Atoms		ZeroOcc	AltConf
4	A	26	Total	O	0	0
			26	26		
4	B	19	Total	O	0	0
			19	19		

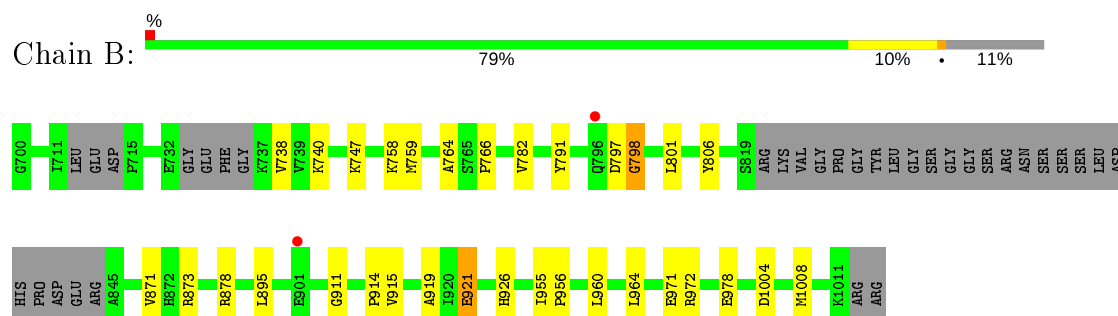
3 Residue-property plots [i](#)

These plots are drawn for all protein, RNA and DNA chains in the entry. The first graphic for a chain summarises the proportions of the various outlier classes displayed in the second graphic. The second graphic shows the sequence view annotated by issues in geometry and electron density. Residues are color-coded according to the number of geometric quality criteria for which they contain at least one outlier: green = 0, yellow = 1, orange = 2 and red = 3 or more. A red dot above a residue indicates a poor fit to the electron density ($RSRZ > 2$). Stretches of 2 or more consecutive residues without any outlier are shown as a green connector. Residues present in the sample, but not in the model, are shown in grey.

- Molecule 1: PROTO-ONCOGENE TYROSINE-PROTEIN KINASE RECEPTOR RET



- Molecule 1: PROTO-ONCOGENE TYROSINE-PROTEIN KINASE RECEPTOR RET



4 Data and refinement statistics

Property	Value	Source
Space group	P 1	Depositor
Cell constants a, b, c, α , β , γ	50.70Å 50.76Å 74.59Å 103.50° 99.66° 89.92°	Depositor
Resolution (Å)	30.00 – 2.50 18.99 – 2.50	Depositor EDS
% Data completeness (in resolution range)	95.5 (30.00-2.50) 95.7 (18.99-2.50)	Depositor EDS
R_{merge}	0.04	Depositor
R_{sym}	(Not available)	Depositor
$\langle I/\sigma(I) \rangle$ ¹	5.10 (at 2.49Å)	Xtriage
Refinement program	REFMAC 5.2.0019	Depositor
R, R_{free}	0.201 , 0.242 0.203 , (Not available)	Depositor DCC
R_{free} test set	No test flags present.	wwPDB-VP
Wilson B-factor (Å ²)	34.0	Xtriage
Anisotropy	0.048	Xtriage
Bulk solvent k_{sol} (e/Å ³), B_{sol} (Å ²)	0.36 , 31.2	EDS
L-test for twinning ²	$\langle L \rangle = 0.50$, $\langle L^2 \rangle = 0.33$	Xtriage
Estimated twinning fraction	0.096 for -k,-h,-l	Xtriage
F_o, F_c correlation	0.93	EDS
Total number of atoms	4423	wwPDB-VP
Average B, all atoms (Å ²)	29.0	wwPDB-VP

Xtriage's analysis on translational NCS is as follows: *The largest off-origin peak in the Patterson function is 7.33% of the height of the origin peak. No significant pseudotranslation is detected.*

¹Intensities estimated from amplitudes.

²Theoretical values of $\langle |L| \rangle$, $\langle L^2 \rangle$ for acentric reflections are 0.5, 0.333 respectively for untwinned datasets, and 0.375, 0.2 for perfectly twinned datasets.

5 Model quality

5.1 Standard geometry

Bond lengths and bond angles in the following residue types are not validated in this section: X2M, FMT, PTR

The Z score for a bond length (or angle) is the number of standard deviations the observed value is removed from the expected value. A bond length (or angle) with $|Z| > 5$ is considered an outlier worth inspection. RMSZ is the root-mean-square of all Z scores of the bond lengths (or angles).

Mol	Chain	Bond lengths		Bond angles	
		RMSZ	$\# Z > 5$	RMSZ	$\# Z > 5$
1	A	0.67	0/2213	0.74	0/2993
1	B	0.69	0/2172	0.76	0/2937
All	All	0.68	0/4385	0.75	0/5930

There are no bond length outliers.

There are no bond angle outliers.

There are no chirality outliers.

There are no planarity outliers.

5.2 Too-close contacts

In the following table, the Non-H and H(model) columns list the number of non-hydrogen atoms and hydrogen atoms in the chain respectively. The H(added) column lists the number of hydrogen atoms added and optimized by MolProbity. The Clashes column lists the number of clashes within the asymmetric unit, whereas Symm-Clashes lists symmetry related clashes.

Mol	Chain	Non-H	H(model)	H(added)	Clashes	Symm-Clashes
1	A	2184	0	2137	21	0
1	B	2143	0	2098	17	0
2	A	6	0	2	1	0
2	B	9	0	3	2	0
3	A	18	0	14	0	0
3	B	18	0	14	0	0
4	A	26	0	0	0	0
4	B	19	0	0	1	0
All	All	4423	0	4268	35	0

The all-atom clashscore is defined as the number of clashes found per 1000 atoms (including hydrogen atoms). The all-atom clashscore for this structure is 4.

All (35) close contacts within the same asymmetric unit are listed below, sorted by their clash magnitude.

Atom-1	Atom-2	Interatomic distance (Å)	Clash overlap (Å)
1:B:747:LYS:HD2	1:B:791:TYR:O	1.85	0.77
1:A:915:VAL:HG12	1:B:766:PRO:HD3	1.80	0.64
1:B:878:ARG:NH2	1:B:914:PRO:HG2	2.14	0.62
1:B:738:VAL:HG22	1:B:758:LYS:HG2	1.87	0.57
1:A:873:ARG:HD3	1:A:895:LEU:O	2.05	0.56
1:A:762:GLU:O	1:A:763:ASN:HB2	2.05	0.56
1:A:747:LYS:HD2	1:A:791:TYR:O	2.08	0.54
1:A:700:GLY:N	1:A:703:SER:HG	2.05	0.53
1:A:923:LEU:O	2:B:2012:FMT:H	2.09	0.52
1:B:797:ASP:O	1:B:798:GLY:O	2.28	0.52
1:A:740:LYS:HE3	1:A:806:TYR:CZ	2.45	0.51
1:A:915:VAL:HG13	1:B:764:ALA:O	2.12	0.50
1:B:873:ARG:HD3	1:B:895:LEU:O	2.12	0.50
1:A:926:HIS:HE2	2:B:2012:FMT:C	2.24	0.49
1:B:871:VAL:HG12	1:B:873:ARG:HG3	1.95	0.48
1:B:911:GLY:HA3	4:B:3015:HOH:O	2.12	0.48
2:A:2015:FMT:C	1:B:926:HIS:HE2	2.26	0.48
1:A:786:HIS:CE1	1:A:857:GLN:HG2	2.51	0.46
1:A:709:PHE:HE1	1:A:776:PHE:HE2	1.64	0.46
1:A:945:VAL:HG11	1:A:976:CYS:HB2	1.98	0.45
1:B:955:ILE:HA	1:B:956:PRO:HD3	1.85	0.45
1:A:725:VAL:HB	1:A:742:THR:HG22	1.98	0.44
1:A:878:ARG:NH2	1:A:914:PRO:HG2	2.32	0.44
1:B:740:LYS:HE3	1:B:806:TYR:CZ	2.53	0.44
1:B:972:ARG:HH21	1:B:978:GLU:N	2.17	0.43
1:A:879:ASN:O	1:A:891:SER:HB3	2.19	0.43
1:B:1004:ASP:O	1:B:1008:MET:HG3	2.18	0.43
1:A:808:LYS:HE2	1:A:809:TYR:CZ	2.54	0.42
1:B:759:MET:HB3	1:B:801:LEU:HD23	2.00	0.42
1:B:919:ALA:HB1	1:B:921:GLU:OE2	2.20	0.42
1:A:782:VAL:HG11	1:A:787:VAL:HG11	2.03	0.41
1:A:998:PHE:HA	1:A:1001:ILE:HD12	2.00	0.41
1:A:956:PRO:HA	1:A:957:PRO:HD2	1.78	0.41
1:A:915:VAL:HG12	1:B:766:PRO:CD	2.50	0.41
1:A:776:PHE:O	1:A:780:LYS:HG3	2.21	0.40

There are no symmetry-related clashes.

5.3 Torsion angles [i](#)

5.3.1 Protein backbone [i](#)

In the following table, the Percentiles column shows the percent Ramachandran outliers of the chain as a percentile score with respect to all X-ray entries followed by that with respect to entries of similar resolution.

The Analysed column shows the number of residues for which the backbone conformation was analysed, and the total number of residues.

Mol	Chain	Analysed	Favoured	Allowed	Outliers	Percentiles	
1	A	278/314 (88%)	270 (97%)	8 (3%)	0	100	100
1	B	271/314 (86%)	259 (96%)	11 (4%)	1 (0%)	34	54
All	All	549/628 (87%)	529 (96%)	19 (4%)	1 (0%)	47	68

All (1) Ramachandran outliers are listed below:

Mol	Chain	Res	Type
1	B	798	GLY

5.3.2 Protein sidechains [i](#)

In the following table, the Percentiles column shows the percent sidechain outliers of the chain as a percentile score with respect to all X-ray entries followed by that with respect to entries of similar resolution.

The Analysed column shows the number of residues for which the sidechain conformation was analysed, and the total number of residues.

Mol	Chain	Analysed	Rotameric	Outliers	Percentiles	
1	A	215/271 (79%)	208 (97%)	7 (3%)	38	64
1	B	212/271 (78%)	206 (97%)	6 (3%)	43	70
All	All	427/542 (79%)	414 (97%)	13 (3%)	41	68

All (13) residues with a non-rotameric sidechain are listed below:

Mol	Chain	Res	Type
1	A	758	LYS
1	A	808	LYS
1	A	915	VAL
1	A	921	GLU
1	A	960	LEU

Continued on next page...

Continued from previous page...

Mol	Chain	Res	Type
1	A	964	LEU
1	A	1010	VAL
1	B	782	VAL
1	B	915	VAL
1	B	921	GLU
1	B	960	LEU
1	B	964	LEU
1	B	971	GLU

Some sidechains can be flipped to improve hydrogen bonding and reduce clashes. All (3) such sidechains are listed below:

Mol	Chain	Res	Type
1	A	786	HIS
1	A	879	ASN
1	B	879	ASN

5.3.3 RNA ⓘ

There are no RNA molecules in this entry.

5.4 Non-standard residues in protein, DNA, RNA chains ⓘ

2 non-standard protein/DNA/RNA residues are modelled in this entry.

In the following table, the Counts columns list the number of bonds (or angles) for which Mogul statistics could be retrieved, the number of bonds (or angles) that are observed in the model and the number of bonds (or angles) that are defined in the Chemical Component Dictionary. The Link column lists molecule types, if any, to which the group is linked. The Z score for a bond length (or angle) is the number of standard deviations the observed value is removed from the expected value. A bond length (or angle) with $|Z| > 2$ is considered an outlier worth inspection. RMSZ is the root-mean-square of all Z scores of the bond lengths (or angles).

Mol	Type	Chain	Res	Link	Bond lengths			Bond angles		
					Counts	RMSZ	$\# Z > 2$	Counts	RMSZ	$\# Z > 2$
1	PTR	B	905	1	15,16,17	2.02	1 (6%)	19,22,24	0.89	0
1	PTR	A	905	1	15,16,17	2.03	1 (6%)	19,22,24	0.74	0

In the following table, the Chirals column lists the number of chiral outliers, the number of chiral centers analysed, the number of these observed in the model and the number defined in the Chemical Component Dictionary. Similar counts are reported in the Torsion and Rings columns. '-' means no outliers of that kind were identified.

Mol	Type	Chain	Res	Link	Chirals	Torsions	Rings
1	PTR	B	905	1	-	0/10/11/13	0/1/1/1
1	PTR	A	905	1	-	0/10/11/13	0/1/1/1

All (2) bond length outliers are listed below:

Mol	Chain	Res	Type	Atoms	Z	Observed(Å)	Ideal(Å)
1	A	905	PTR	OH-CZ	-7.43	1.23	1.40
1	B	905	PTR	OH-CZ	-7.31	1.24	1.40

There are no bond angle outliers.

There are no chirality outliers.

There are no torsion outliers.

There are no ring outliers.

No monomer is involved in short contacts.

5.5 Carbohydrates [i](#)

There are no carbohydrates in this entry.

5.6 Ligand geometry [i](#)

7 ligands are modelled in this entry.

In the following table, the Counts columns list the number of bonds (or angles) for which Mogul statistics could be retrieved, the number of bonds (or angles) that are observed in the model and the number of bonds (or angles) that are defined in the Chemical Component Dictionary. The Link column lists molecule types, if any, to which the group is linked. The Z score for a bond length (or angle) is the number of standard deviations the observed value is removed from the expected value. A bond length (or angle) with $|Z| > 2$ is considered an outlier worth inspection. RMSZ is the root-mean-square of all Z scores of the bond lengths (or angles).

Mol	Type	Chain	Res	Link	Bond lengths			Bond angles		
					Counts	RMSZ	$\# Z > 2$	Counts	RMSZ	$\# Z > 2$
2	FMT	B	2012	-	0,2,2	0.00	-	0,1,1	0.00	-
3	X2M	B	2015	-	17,20,20	2.52	5 (29%)	21,29,29	2.37	5 (23%)
2	FMT	A	2014	-	0,2,2	0.00	-	0,1,1	0.00	-
2	FMT	B	2014	-	0,2,2	0.00	-	0,1,1	0.00	-
2	FMT	B	2013	-	0,2,2	0.00	-	0,1,1	0.00	-
2	FMT	A	2015	-	0,2,2	0.00	-	0,1,1	0.00	-
3	X2M	A	2016	-	17,20,20	2.46	6 (35%)	21,29,29	1.82	4 (19%)

In the following table, the Chirals column lists the number of chiral outliers, the number of chiral centers analysed, the number of these observed in the model and the number defined in the Chemical Component Dictionary. Similar counts are reported in the Torsion and Rings columns. '-' means no outliers of that kind were identified.

Mol	Type	Chain	Res	Link	Chirals	Torsions	Rings
3	X2M	B	2015	-	-	0/4/16/16	0/3/3/3
3	X2M	A	2016	-	-	0/4/16/16	0/3/3/3

All (11) bond length outliers are listed below:

Mol	Chain	Res	Type	Atoms	Z	Observed(Å)	Ideal(Å)
3	B	2015	X2M	C5-C3	-6.79	1.40	1.50
3	A	2016	X2M	C5-C3	-6.74	1.40	1.50
3	B	2015	X2M	C19-C5	5.28	1.42	1.34
3	A	2016	X2M	C19-C5	4.23	1.41	1.34
3	A	2016	X2M	C7-C5	-3.37	1.39	1.45
3	B	2015	X2M	C7-C5	-3.09	1.40	1.45
3	A	2016	X2M	C6-N1	-2.77	1.33	1.38
3	B	2015	X2M	C6-N1	-2.72	1.33	1.38
3	A	2016	X2M	CAB-C26	2.51	1.56	1.51
3	B	2015	X2M	C25-C24	-2.37	1.34	1.39
3	A	2016	X2M	C25-C24	-2.28	1.34	1.39

All (9) bond angle outliers are listed below:

Mol	Chain	Res	Type	Atoms	Z	Observed(°)	Ideal(°)
3	B	2015	X2M	C5-C3-N1	7.56	111.12	106.88
3	B	2015	X2M	C6-N1-C3	-5.21	108.10	111.38
3	A	2016	X2M	C5-C3-N1	4.97	109.66	106.88
3	A	2016	X2M	C6-N1-C3	-3.94	108.90	111.38
3	B	2015	X2M	C19-C5-C3	2.56	130.25	119.96
3	A	2016	X2M	C11-C6-C7	-2.42	119.77	122.19
3	B	2015	X2M	O4-C3-N1	-2.41	122.54	126.36
3	B	2015	X2M	C11-C6-C7	-2.29	119.90	122.19
3	A	2016	X2M	C19-C5-C3	2.28	129.13	119.96

There are no chirality outliers.

There are no torsion outliers.

There are no ring outliers.

2 monomers are involved in 3 short contacts:

Mol	Chain	Res	Type	Clashes	Symm-Clashes
2	B	2012	FMT	2	0
2	A	2015	FMT	1	0

5.7 Other polymers [i](#)

There are no such residues in this entry.

5.8 Polymer linkage issues [i](#)

There are no chain breaks in this entry.

6 Fit of model and data [i](#)

6.1 Protein, DNA and RNA chains [i](#)

In the following table, the column labelled ‘#RSRZ> 2’ contains the number (and percentage) of RSRZ outliers, followed by percent RSRZ outliers for the chain as percentile scores relative to all X-ray entries and entries of similar resolution. The OWAB column contains the minimum, median, 95th percentile and maximum values of the occupancy-weighted average B-factor per residue. The column labelled ‘Q< 0.9’ lists the number of (and percentage) of residues with an average occupancy less than 0.9.

Mol	Chain	Analysed	<RSRZ>	#RSRZ>2	OWAB(Å ²)	Q<0.9
1	A	286/314 (91%)	-0.29	4 (1%) 75 77	17, 29, 44, 61	0
1	B	279/314 (88%)	-0.23	2 (0%) 87 89	19, 29, 47, 57	0
All	All	565/628 (89%)	-0.26	6 (1%) 80 82	17, 29, 46, 61	0

All (6) RSRZ outliers are listed below:

Mol	Chain	Res	Type	RSRZ
1	B	796	GLN	2.6
1	A	901	GLU	2.5
1	A	900	TYR	2.3
1	A	715	PRO	2.1
1	B	901	GLU	2.1
1	A	797	ASP	2.0

6.2 Non-standard residues in protein, DNA, RNA chains [i](#)

In the following table, the Atoms column lists the number of modelled atoms in the group and the number defined in the chemical component dictionary. The B-factors column lists the minimum, median, 95th percentile and maximum values of B factors of atoms in the group. The column labelled ‘Q< 0.9’ lists the number of atoms with occupancy less than 0.9.

Mol	Type	Chain	Res	Atoms	RSCC	RSR	B-factors(Å ²)	Q<0.9
1	PTR	B	905	16/17	0.95	0.11	28,33,38,38	0
1	PTR	A	905	16/17	0.96	0.11	23,28,33,34	0

6.3 Carbohydrates [i](#)

There are no carbohydrates in this entry.

6.4 Ligands [i](#)

In the following table, the Atoms column lists the number of modelled atoms in the group and the number defined in the chemical component dictionary. The B-factors column lists the minimum, median, 95th percentile and maximum values of B factors of atoms in the group. The column labelled 'Q< 0.9' lists the number of atoms with occupancy less than 0.9.

Mol	Type	Chain	Res	Atoms	RSCC	RSR	B-factors(\AA^2)	Q<0.9
2	FMT	B	2014	3/3	0.84	0.29	54,54,54,54	0
3	X2M	A	2016	18/18	0.96	0.12	24,26,27,28	0
2	FMT	B	2013	3/3	0.97	0.30	35,35,36,37	0
3	X2M	B	2015	18/18	0.97	0.10	23,25,25,26	0
2	FMT	A	2015	3/3	0.98	0.11	32,32,33,34	0
2	FMT	B	2012	3/3	0.98	0.09	28,28,28,29	0
2	FMT	A	2014	3/3	0.99	0.10	31,31,31,32	0

6.5 Other polymers [i](#)

There are no such residues in this entry.