



# Full wwPDB X-ray Structure Validation Report ⓘ

May 13, 2020 – 03:21 am BST

PDB ID : 5X2T  
Title : Direct Observation of Conformational Population Shifts in Hemoglobin: Crystal Structure of Half-Liganded Hemoglobin after Adding 4 mM bezafibrate pH 7.2.  
Authors : Ohki, M.; Park, S.-Y.  
Deposited on : 2017-02-02  
Resolution : 2.64 Å(reported)

This is a Full wwPDB X-ray Structure Validation Report for a publicly released PDB entry.

We welcome your comments at [validation@mail.wwpdb.org](mailto:validation@mail.wwpdb.org)

A user guide is available at

<https://www.wwpdb.org/validation/2017/XrayValidationReportHelp>

with specific help available everywhere you see the ⓘ symbol.

---

The following versions of software and data (see [references ⓘ](#)) were used in the production of this report:

MolProbity : 4.02b-467  
Mogul : 1.8.5 (274361), CSD as541be (2020)  
Xtriage (Phenix) : 1.13  
EDS : 2.11  
buster-report : 1.1.7 (2018)  
Percentile statistics : 20191225.v01 (using entries in the PDB archive December 25th 2019)  
Refmac : 5.8.0158  
CCP4 : 7.0.044 (Gargrove)  
Ideal geometry (proteins) : Engh & Huber (2001)  
Ideal geometry (DNA, RNA) : Parkinson et al. (1996)  
Validation Pipeline (wwPDB-VP) : 2.11

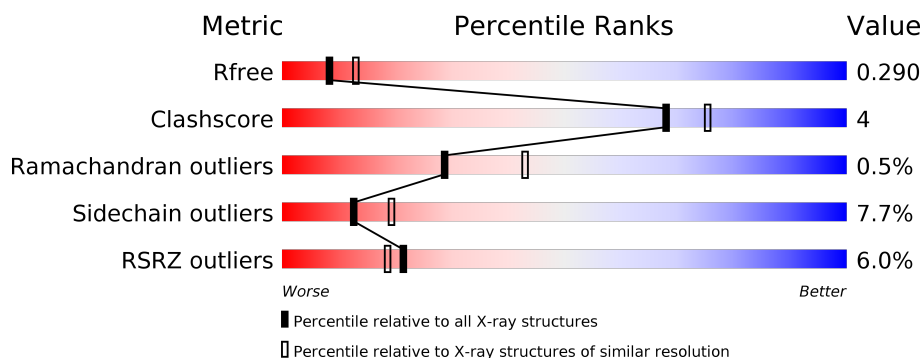
# 1 Overall quality at a glance

The following experimental techniques were used to determine the structure:

*X-RAY DIFFRACTION*

The reported resolution of this entry is 2.64 Å.

Percentile scores (ranging between 0-100) for global validation metrics of the entry are shown in the following graphic. The table shows the number of entries on which the scores are based.



Metric	Whole archive (#Entries)	Similar resolution (#Entries, resolution range(Å))
$R_{free}$	130704	1426 (2.66-2.62)
Clashscore	141614	1472 (2.66-2.62)
Ramachandran outliers	138981	1446 (2.66-2.62)
Sidechain outliers	138945	1446 (2.66-2.62)
RSRZ outliers	127900	1408 (2.66-2.62)

The table below summarises the geometric issues observed across the polymeric chains and their fit to the electron density. The red, orange, yellow and green segments on the lower bar indicate the fraction of residues that contain outliers for  $\geq 3$ , 2, 1 and 0 types of geometric quality criteria respectively. A grey segment represents the fraction of residues that are not modelled. The numeric value for each fraction is indicated below the corresponding segment, with a dot representing fractions  $\leq 5\%$ . The upper red bar (where present) indicates the fraction of residues that have poor fit to the electron density. The numeric value is given above the bar.

Mol	Chain	Length	Quality of chain
1	A	141	<div> <div>6%</div> <div> <div></div> <div>83%</div> <div>16%</div> <div>.</div> </div> </div>
1	C	141	<div> <div>9%</div> <div> <div></div> <div>91%</div> <div>9%</div> <div>.</div> </div> </div>
1	E	141	<div> <div>11%</div> <div> <div></div> <div>84%</div> <div>14%</div> <div>..</div> </div> </div>
1	G	141	<div> <div>4%</div> <div> <div></div> <div>85%</div> <div>12%</div> <div>..</div> </div> </div>
1	I	141	<div> <div>5%</div> <div> <div></div> <div>84%</div> <div>11%</div> <div>..</div> </div> </div>
1	K	141	<div> <div>4%</div> <div> <div></div> <div>87%</div> <div>11%</div> <div>..</div> </div> </div>

*Continued on next page...*

Continued from previous page...

Mol	Chain	Length	Quality of chain
2	B	146	<div><div></div><div>3%</div><div>86%</div><div>12%</div><div>..</div></div>
2	D	146	<div><div></div><div>9%</div><div>85%</div><div>12%</div><div>..</div></div>
2	F	146	<div><div></div><div>%</div><div>94%</div><div>5%</div><div>..</div></div>
2	H	146	<div><div></div><div>3%</div><div>92%</div><div>7%</div><div>.</div></div>
2	J	146	<div><div></div><div>3%</div><div>85%</div><div>11%</div><div>..</div></div>
2	L	146	<div><div></div><div>14%</div><div>76%</div><div>18%</div><div>5%</div><div>..</div></div>

## 2 Entry composition

There are 5 unique types of molecules in this entry. The entry contains 13573 atoms, of which 0 are hydrogens and 0 are deuteriums.

In the tables below, the ZeroOcc column contains the number of atoms modelled with zero occupancy, the AltConf column contains the number of residues with at least one atom in alternate conformation and the Trace column contains the number of residues modelled with at most 2 atoms.

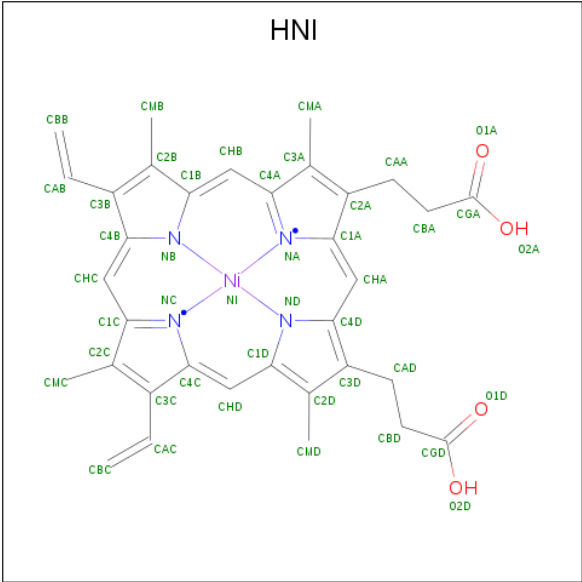
- Molecule 1 is a protein called Hemoglobin subunit alpha.

Mol	Chain	Residues	Atoms					ZeroOcc	AltConf	Trace
1	A	140	Total	C	N	O	S	0	0	0
			1062	680	186	193	3			
1	C	140	Total	C	N	O	S	0	0	0
			1062	680	186	193	3			
1	E	140	Total	C	N	O	S	0	0	0
			1062	680	186	193	3			
1	G	140	Total	C	N	O	S	0	0	0
			1062	680	186	193	3			
1	I	140	Total	C	N	O	S	0	0	0
			1062	680	186	193	3			
1	K	140	Total	C	N	O	S	0	0	0
			1062	680	186	193	3			

- Molecule 2 is a protein called Hemoglobin subunit beta.

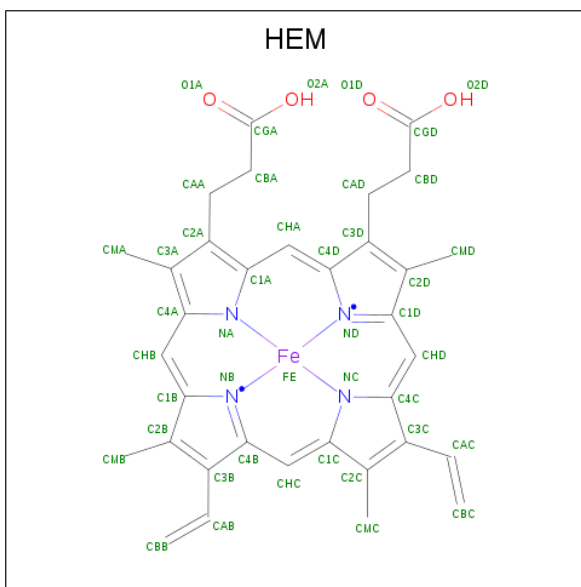
Mol	Chain	Residues	Atoms					ZeroOcc	AltConf	Trace
2	B	145	Total	C	N	O	S	0	0	0
			1110	715	192	200	3			
2	D	145	Total	C	N	O	S	0	0	0
			1110	715	192	200	3			
2	F	145	Total	C	N	O	S	0	0	0
			1110	715	192	200	3			
2	H	145	Total	C	N	O	S	0	0	0
			1110	715	192	200	3			
2	J	145	Total	C	N	O	S	0	0	0
			1110	715	192	200	3			
2	L	145	Total	C	N	O	S	0	0	0
			1110	715	192	200	3			

- Molecule 3 is PROTOPORPHYRIN IX CONTAINING NI(II) (three-letter code: HNI) (formula:  $C_{34}H_{32}N_4NiO_4$ ).



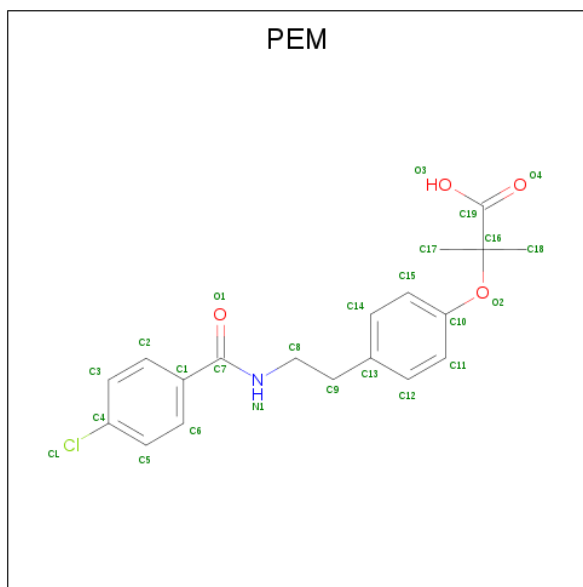
Mol	Chain	Residues	Atoms					ZeroOcc	AltConf
3	A	1	Total	C	N	Ni	O	0	0
			43	34	4	1	4		
3	D	1	Total	C	N	Ni	O	0	0
			43	34	4	1	4		
3	E	1	Total	C	N	Ni	O	0	0
			43	34	4	1	4		
3	H	1	Total	C	N	Ni	O	0	0
			43	34	4	1	4		
3	I	1	Total	C	N	Ni	O	0	0
			43	34	4	1	4		
3	L	1	Total	C	N	Ni	O	0	0
			43	34	4	1	4		

- Molecule 4 is PROTOPORPHYRIN IX CONTAINING FE (three-letter code: HEM) (formula: C<sub>34</sub>H<sub>32</sub>FeN<sub>4</sub>O<sub>4</sub>).



Mol	Chain	Residues	Atoms					ZeroOcc	AltConf
4	B	1	Total 43	C 34	Fe 1	N 4	O 4	0	0
4	C	1	Total 43	C 34	Fe 1	N 4	O 4	0	0
4	F	1	Total 43	C 34	Fe 1	N 4	O 4	0	0
4	G	1	Total 43	C 34	Fe 1	N 4	O 4	0	0
4	J	1	Total 43	C 34	Fe 1	N 4	O 4	0	0
4	K	1	Total 43	C 34	Fe 1	N 4	O 4	0	0

- Molecule 5 is 2-[P-[2-P-CHLOROBENZAMIDO)ETHYL]PHENOXY]-2-METHYLPROPI ONIC ACID (three-letter code: PEM) (formula: C<sub>19</sub>H<sub>20</sub>ClNO<sub>4</sub>).

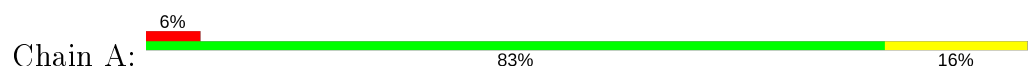


Mol	Chain	Residues	Atoms					ZeroOcc	AltConf
			Total	C	Cl	N	O		
5	I	1	25	19	1	1	4	0	0

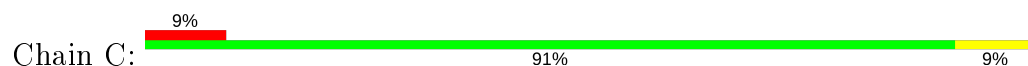
### 3 Residue-property plots [i](#)

These plots are drawn for all protein, RNA and DNA chains in the entry. The first graphic for a chain summarises the proportions of the various outlier classes displayed in the second graphic. The second graphic shows the sequence view annotated by issues in geometry and electron density. Residues are color-coded according to the number of geometric quality criteria for which they contain at least one outlier: green = 0, yellow = 1, orange = 2 and red = 3 or more. A red dot above a residue indicates a poor fit to the electron density ( $RSRZ > 2$ ). Stretches of 2 or more consecutive residues without any outlier are shown as a green connector. Residues present in the sample, but not in the model, are shown in grey.

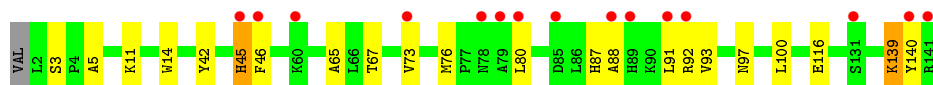
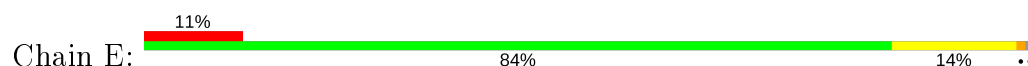
- Molecule 1: Hemoglobin subunit alpha



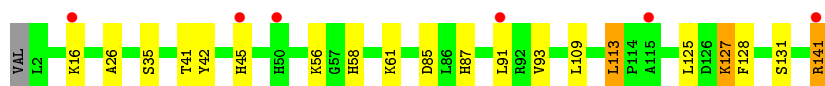
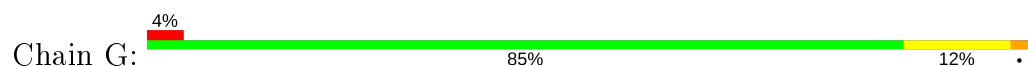
- Molecule 1: Hemoglobin subunit alpha



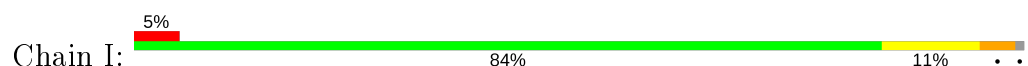
- Molecule 1: Hemoglobin subunit alpha



- Molecule 1: Hemoglobin subunit alpha

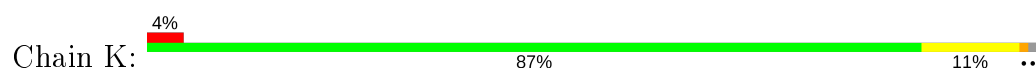


- Molecule 1: Hemoglobin subunit alpha

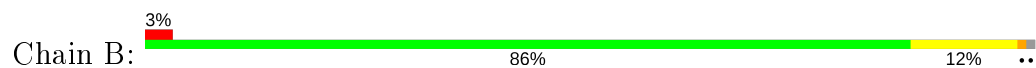


- Molecule 1: Hemoglobin subunit alpha

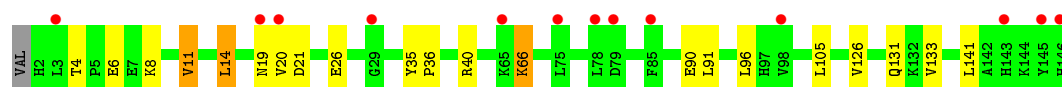
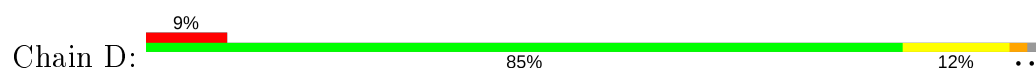




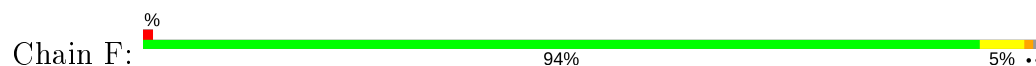
- Molecule 2: Hemoglobin subunit beta



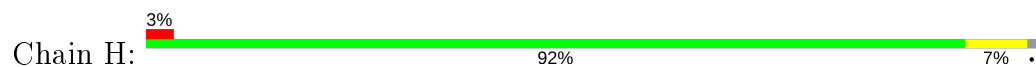
- Molecule 2: Hemoglobin subunit beta



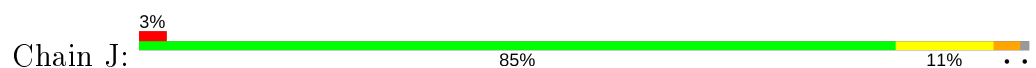
- Molecule 2: Hemoglobin subunit beta



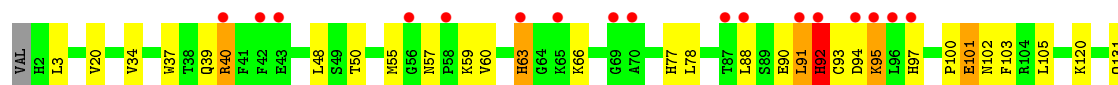
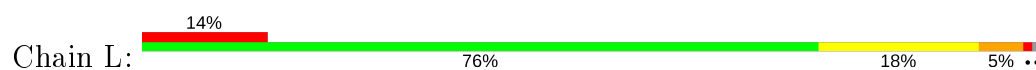
- Molecule 2: Hemoglobin subunit beta

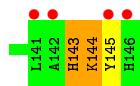


- Molecule 2: Hemoglobin subunit beta



- Molecule 2: Hemoglobin subunit beta





## 4 Data and refinement statistics

Property	Value	Source
Space group	C 1 2 1	Depositor
Cell constants a, b, c, $\alpha$ , $\beta$ , $\gamma$	228.49Å 55.02Å 138.50Å 90.00° 103.38° 90.00°	Depositor
Resolution (Å)	48.77 – 2.64 48.77 – 2.64	Depositor EDS
% Data completeness (in resolution range)	97.9 (48.77-2.64) 97.6 (48.77-2.64)	Depositor EDS
$R_{merge}$	(Not available)	Depositor
$R_{sym}$	(Not available)	Depositor
$\langle I/\sigma(I) \rangle$ <sup>1</sup>	2.47 (at 2.65Å)	Xtriage
Refinement program	BUSTER 2.10.2	Depositor
R, $R_{free}$	0.232 , 0.277 0.239 , 0.290	Depositor DCC
$R_{free}$ test set	2397 reflections (4.90%)	wwPDB-VP
Wilson B-factor (Å <sup>2</sup> )	61.9	Xtriage
Anisotropy	0.458	Xtriage
Bulk solvent $k_{sol}$ (e/Å <sup>3</sup> ), $B_{sol}$ (Å <sup>2</sup> )	0.35 , 57.3	EDS
L-test for twinning <sup>2</sup>	$\langle  L  \rangle = 0.48$ , $\langle L^2 \rangle = 0.31$	Xtriage
Estimated twinning fraction	No twinning to report.	Xtriage
$F_o, F_c$ correlation	0.93	EDS
Total number of atoms	13573	wwPDB-VP
Average B, all atoms (Å <sup>2</sup> )	76.0	wwPDB-VP

Xtriage's analysis on translational NCS is as follows: *The largest off-origin peak in the Patterson function is 3.80% of the height of the origin peak. No significant pseudotranslation is detected.*

<sup>1</sup>Intensities estimated from amplitudes.

<sup>2</sup>Theoretical values of  $\langle |L| \rangle$ ,  $\langle L^2 \rangle$  for acentric reflections are 0.5, 0.333 respectively for untwinned datasets, and 0.375, 0.2 for perfectly twinned datasets.

## 5 Model quality

### 5.1 Standard geometry

Bond lengths and bond angles in the following residue types are not validated in this section: HNI, HEM, PEM

The Z score for a bond length (or angle) is the number of standard deviations the observed value is removed from the expected value. A bond length (or angle) with  $|Z| > 5$  is considered an outlier worth inspection. RMSZ is the root-mean-square of all Z scores of the bond lengths (or angles).

Mol	Chain	Bond lengths		Bond angles	
		RMSZ	# Z  >5	RMSZ	# Z  >5
1	A	0.46	0/1090	0.60	0/1481
1	C	0.47	0/1090	0.64	0/1481
1	E	0.46	0/1090	0.63	0/1481
1	G	0.45	0/1090	0.62	0/1481
1	I	0.47	0/1090	0.65	0/1481
1	K	0.50	0/1090	0.65	0/1481
2	B	0.48	0/1139	0.62	0/1546
2	D	0.48	0/1139	0.61	0/1546
2	F	0.46	0/1139	0.61	0/1546
2	H	0.44	0/1139	0.60	0/1546
2	J	0.48	0/1139	0.64	0/1546
2	L	0.49	0/1139	0.72	2/1546 (0.1%)
All	All	0.47	0/13374	0.63	2/18162 (0.0%)

There are no bond length outliers.

All (2) bond angle outliers are listed below:

Mol	Chain	Res	Type	Atoms	Z	Observed(°)	Ideal(°)
2	L	91	LEU	C-N-CA	6.77	138.63	121.70
2	L	92	HIS	C-N-CA	6.33	137.53	121.70

There are no chirality outliers.

There are no planarity outliers.

### 5.2 Too-close contacts

In the following table, the Non-H and H(model) columns list the number of non-hydrogen atoms and hydrogen atoms in the chain respectively. The H(added) column lists the number of hydrogen

atoms added and optimized by MolProbity. The Clashes column lists the number of clashes within the asymmetric unit, whereas Symm-Clashes lists symmetry related clashes.

Mol	Chain	Non-H	H(model)	H(added)	Clashes	Symm-Clashes
1	A	1062	0	1061	12	0
1	C	1062	0	1061	5	0
1	E	1062	0	1061	13	0
1	G	1062	0	1061	13	0
1	I	1062	0	1061	12	0
1	K	1062	0	1061	12	0
2	B	1110	0	1100	9	0
2	D	1110	0	1100	11	0
2	F	1110	0	1100	3	0
2	H	1110	0	1100	3	0
2	J	1110	0	1100	8	0
2	L	1110	0	1100	18	0
3	A	43	0	30	2	0
3	D	43	0	30	3	0
3	E	43	0	30	1	0
3	H	43	0	31	0	0
3	I	43	0	31	2	0
3	L	43	0	30	3	0
4	B	43	0	30	2	0
4	C	43	0	30	2	0
4	F	43	0	30	3	0
4	G	43	0	30	3	0
4	J	43	0	30	1	0
4	K	43	0	30	2	0
5	I	25	0	19	0	0
All	All	13573	0	13347	103	0

The all-atom clashscore is defined as the number of clashes found per 1000 atoms (including hydrogen atoms). The all-atom clashscore for this structure is 4.

All (103) close contacts within the same asymmetric unit are listed below, sorted by their clash magnitude.

Atom-1	Atom-2	Interatomic distance (Å)	Clash overlap (Å)
2:D:20:VAL:N	2:D:21:ASP:HA	1.85	0.90
2:J:90:GLU:O	2:J:94:ASP:HB2	1.84	0.78
2:J:40:ARG:HB3	1:K:92:ARG:NE	2.03	0.74
1:I:113:LEU:HB3	1:I:116:GLU:HG2	1.73	0.70
1:E:88:ALA:HB2	1:E:139:LYS:HE3	1.77	0.66
2:L:100:PRO:HG3	2:L:144:LYS:HE2	1.77	0.66

*Continued on next page...*

*Continued from previous page...*

Atom-1	Atom-2	Interatomic distance (Å)	Clash overlap (Å)
3:A:201:HNI:HBB1	3:A:201:HNI:HMB1	1.78	0.65
4:B:201:HEM:HBC2	4:B:201:HEM:HMC2	1.79	0.65
1:I:44:PRO:HB3	2:L:97:HIS:CD2	2.33	0.64
1:I:92:ARG:HD2	2:L:37:TRP:HA	1.80	0.63
1:K:35:SER:HB3	2:L:131:GLN:HG3	1.80	0.63
1:K:58:HIS:HE1	4:K:201:HEM:CHA	2.13	0.62
2:D:20:VAL:H	2:D:21:ASP:HA	1.64	0.60
2:J:40:ARG:HB3	1:K:92:ARG:CZ	2.31	0.59
1:A:113:LEU:HB3	1:A:116:GLU:HB2	1.85	0.59
2:F:62:ALA:O	2:F:65:LYS:HG3	2.03	0.58
1:G:127:LYS:HZ1	1:G:128:PHE:H	1.49	0.58
1:G:127:LYS:HZ1	1:G:128:PHE:N	2.02	0.57
1:C:83:LEU:HD21	4:C:201:HEM:HBA2	1.85	0.57
1:A:35:SER:HB3	2:B:131:GLN:HG3	1.86	0.57
1:E:92:ARG:HG3	2:H:40:ARG:HD2	1.86	0.57
1:A:34:LEU:HD12	2:B:124:PRO:HB2	1.87	0.56
1:I:91:LEU:HA	2:L:40:ARG:HG3	1.87	0.56
2:J:25:GLY:HA3	2:J:61:LYS:HE3	1.87	0.56
2:L:90:GLU:C	2:L:92:HIS:HB2	2.25	0.56
1:E:87:HIS:HA	1:E:91:LEU:HB2	1.88	0.56
1:C:35:SER:HB3	2:D:131:GLN:HG3	1.88	0.55
2:L:88:LEU:HD11	3:L:201:HNI:HMA2	1.88	0.55
1:G:58:HIS:HE1	4:G:201:HEM:CHA	2.20	0.54
1:I:87:HIS:O	1:I:92:ARG:HA	2.08	0.54
2:D:66:LYS:HD3	3:D:201:HNI:HAA2	1.89	0.54
2:D:11:VAL:HG21	2:D:133:VAL:HG21	1.90	0.54
1:C:43:PHE:HB3	1:C:46:PHE:HB2	1.91	0.53
1:K:109:LEU:HD13	1:K:125:LEU:HD13	1.91	0.52
4:B:201:HEM:HHA	4:B:201:HEM:HBD1	1.91	0.52
1:A:83:LEU:HD21	3:A:201:HNI:HMA2	1.92	0.52
1:I:58:HIS:HE1	3:I:201:HNI:CHA	2.23	0.52
2:B:4:THR:HG22	2:B:7:GLU:H	1.76	0.51
1:E:97:ASN:HD22	1:E:100:LEU:HD12	1.74	0.51
2:L:39:GLN:HG2	2:L:48:LEU:HD23	1.93	0.51
2:L:103:PHE:CD1	3:L:201:HNI:HBB1	2.46	0.51
2:J:96:LEU:HB3	2:J:98:VAL:HG23	1.93	0.51
1:E:91:LEU:O	1:E:92:ARG:HG2	2.12	0.50
1:A:137:THR:HA	1:A:140:TYR:HE1	1.77	0.50
2:L:91:LEU:N	2:L:92:HIS:HB2	2.28	0.49
1:A:76:MET:HB3	1:A:135:VAL:HG21	1.94	0.49
1:A:47:ASP:H	1:A:54:GLN:NE2	2.11	0.49

*Continued on next page...*

*Continued from previous page...*

Atom-1	Atom-2	Interatomic distance (Å)	Clash overlap (Å)
1:I:22:GLY:HA3	1:I:60:LYS:HG2	1.96	0.48
1:E:73:VAL:HA	1:E:76:MET:HG3	1.96	0.48
2:L:57:ASN:HB3	2:L:60:VAL:HG22	1.96	0.48
2:B:57:ASN:HB3	2:B:60:VAL:HB	1.96	0.48
1:C:83:LEU:HD11	4:C:201:HEM:HMA3	1.95	0.47
1:E:88:ALA:HB2	1:E:139:LYS:CE	2.43	0.47
1:I:76:MET:SD	1:I:77:PRO:HD3	2.54	0.47
2:L:63:HIS:HE1	3:L:201:HNI:HAD2	1.80	0.47
1:C:72:HIS:HB3	1:C:75:ASP:HB3	1.97	0.46
2:J:92:HIS:HA	2:J:96:LEU:HB2	1.97	0.46
2:D:19:ASN:HB2	2:D:20:VAL:HB	1.98	0.46
1:G:87:HIS:HA	1:G:91:LEU:HB2	1.98	0.46
4:F:201:HEM:HBB2	4:F:201:HEM:HMB1	1.98	0.45
2:L:102:ASN:HA	2:L:105:LEU:HD12	1.96	0.45
1:G:26:ALA:HB2	1:G:56:LYS:HA	1.99	0.45
1:G:35:SER:HB3	2:H:131:GLN:HG2	1.98	0.45
1:E:5:ALA:HB3	1:G:141:ARG:HH22	1.82	0.45
1:A:137:THR:HA	1:A:140:TYR:CE1	2.52	0.44
2:F:63:HIS:NE2	4:F:201:HEM:HBD2	2.32	0.44
1:K:119:PRO:HG2	2:L:55:MET:HG3	1.99	0.44
2:L:92:HIS:N	2:L:93:CYS:HB3	2.32	0.44
2:B:90:GLU:HG3	2:B:144:LYS:HD3	1.98	0.44
1:A:119:PRO:HG2	2:B:55:MET:HG3	2.00	0.44
2:J:37:TRP:HB2	1:K:92:ARG:HB3	2.00	0.44
1:A:16:LYS:HG3	1:A:116:GLU:HG2	1.99	0.43
1:G:91:LEU:HB3	1:G:93:VAL:HG23	2.00	0.43
1:K:113:LEU:HB3	1:K:116:GLU:HB2	1.99	0.43
1:I:83:LEU:HD11	3:I:201:HNI:HMA2	2.00	0.43
1:K:63:ALA:HA	1:K:66:LEU:HD12	2.00	0.43
2:J:71:PHE:HE2	4:J:201:HEM:HAB	1.83	0.43
1:E:45:HIS:HD2	1:E:46:PHE:CD1	2.37	0.43
2:D:14:LEU:HD13	2:D:126:VAL:HG11	2.01	0.42
1:I:41:THR:HA	2:L:97:HIS:ND1	2.34	0.42
2:B:31:LEU:HD22	2:B:106:LEU:HD13	2.01	0.42
1:G:127:LYS:HG3	1:G:127:LYS:H	1.58	0.42
1:G:109:LEU:O	1:G:113:LEU:HG	2.20	0.42
1:E:92:ARG:HG3	2:H:40:ARG:CB	2.49	0.42
2:D:35:TYR:CZ	2:D:105:LEU:HD22	2.54	0.42
2:D:96:LEU:HD21	3:D:201:HNI:C2D	2.50	0.42
1:G:61:LYS:O	4:G:201:HEM:HMA3	2.19	0.42
1:E:65:ALA:HB2	3:E:201:HNI:HMA1	2.02	0.42

*Continued on next page...*

Continued from previous page...

Atom-1	Atom-2	Interatomic distance (Å)	Clash overlap (Å)
1:E:42:TYR:CE1	1:E:93:VAL:HA	2.55	0.41
1:A:140:TYR:HD2	2:D:36:PRO:HB2	1.85	0.41
2:B:92:HIS:HA	2:B:96:LEU:HD12	2.01	0.41
1:K:127:LYS:HD3	1:K:127:LYS:HA	1.89	0.41
1:G:42:TYR:HB3	4:G:201:HEM:HMD2	2.02	0.41
2:B:89:SER:O	2:B:93:CYS:SG	2.79	0.41
2:F:40:ARG:HH22	1:G:41:THR:HG22	1.85	0.41
1:I:90:LYS:HG2	1:I:91:LEU:HD22	2.03	0.41
1:I:96:VAL:HG21	2:L:101:GLU:HG3	2.03	0.41
1:E:139:LYS:H	1:E:139:LYS:HD3	1.85	0.41
4:F:201:HEM:CBA	4:F:201:HEM:HHA	2.51	0.41
1:K:101:LEU:HB2	4:K:201:HEM:HMC3	2.03	0.41
2:D:96:LEU:HD11	3:D:201:HNI:HBD2	2.02	0.40
1:K:122:HIS:CE1	2:L:34:VAL:HG21	2.56	0.40
1:A:42:TYR:CE2	1:A:93:VAL:HA	2.56	0.40

There are no symmetry-related clashes.

## 5.3 Torsion angles

### 5.3.1 Protein backbone

In the following table, the Percentiles column shows the percent Ramachandran outliers of the chain as a percentile score with respect to all X-ray entries followed by that with respect to entries of similar resolution.

The Analysed column shows the number of residues for which the backbone conformation was analysed, and the total number of residues.

Mol	Chain	Analysed	Favoured	Allowed	Outliers	Percentiles	
1	A	138/141 (98%)	132 (96%)	6 (4%)	0	100	100
1	C	138/141 (98%)	134 (97%)	4 (3%)	0	100	100
1	E	138/141 (98%)	127 (92%)	11 (8%)	0	100	100
1	G	138/141 (98%)	133 (96%)	4 (3%)	1 (1%)	22	32
1	I	138/141 (98%)	130 (94%)	7 (5%)	1 (1%)	22	32
1	K	138/141 (98%)	133 (96%)	5 (4%)	0	100	100
2	B	143/146 (98%)	137 (96%)	6 (4%)	0	100	100
2	D	143/146 (98%)	139 (97%)	4 (3%)	0	100	100

Continued on next page...



*Continued from previous page...*

Mol	Chain	Analysed	Favoured	Allowed	Outliers	Percentiles	
2	F	143/146 (98%)	137 (96%)	6 (4%)	0	100	100
2	H	143/146 (98%)	139 (97%)	4 (3%)	0	100	100
2	J	143/146 (98%)	138 (96%)	4 (3%)	1 (1%)	22	32
2	L	143/146 (98%)	131 (92%)	6 (4%)	6 (4%)	3	2
All	All	1686/1722 (98%)	1610 (96%)	67 (4%)	9 (0%)	29	43

All (9) Ramachandran outliers are listed below:

Mol	Chain	Res	Type
2	L	95	LYS
2	L	145	TYR
2	J	143	HIS
2	L	92	HIS
1	G	125	LEU
1	I	18	GLY
2	L	143	HIS
2	L	144	LYS
2	L	94	ASP

### 5.3.2 Protein sidechains ⓘ

In the following table, the Percentiles column shows the percent sidechain outliers of the chain as a percentile score with respect to all X-ray entries followed by that with respect to entries of similar resolution.

The Analysed column shows the number of residues for which the sidechain conformation was analysed, and the total number of residues.

Mol	Chain	Analysed	Rotameric	Outliers	Percentiles	
1	A	112/113 (99%)	104 (93%)	8 (7%)	14	22
1	C	112/113 (99%)	106 (95%)	6 (5%)	22	35
1	E	112/113 (99%)	103 (92%)	9 (8%)	12	18
1	G	112/113 (99%)	105 (94%)	7 (6%)	18	27
1	I	112/113 (99%)	101 (90%)	11 (10%)	8	10
1	K	112/113 (99%)	105 (94%)	7 (6%)	18	27
2	B	116/118 (98%)	110 (95%)	6 (5%)	23	36
2	D	116/118 (98%)	105 (90%)	11 (10%)	8	11

*Continued on next page...*

*Continued from previous page...*

Mol	Chain	Analysed	Rotameric	Outliers	Percentiles	
2	F	116/118 (98%)	111 (96%)	5 (4%)	29	45
2	H	116/118 (98%)	108 (93%)	8 (7%)	15	23
2	J	116/118 (98%)	101 (87%)	15 (13%)	4	5
2	L	116/118 (98%)	103 (89%)	13 (11%)	6	8
All	All	1368/1386 (99%)	1262 (92%)	106 (8%)	13	19

All (106) residues with a non-rotameric sidechain are listed below:

Mol	Chain	Res	Type
1	A	3	SER
1	A	11	LYS
1	A	67	THR
1	A	75	ASP
1	A	78	ASN
1	A	86	LEU
1	A	105	LEU
1	A	134	THR
2	B	4	THR
2	B	59	LYS
2	B	82	LYS
2	B	97	HIS
2	B	144	LYS
2	B	146	HIS
1	C	3	SER
1	C	9	ASN
1	C	30	GLU
1	C	48	LEU
1	C	92	ARG
1	C	139	LYS
2	D	4	THR
2	D	6	GLU
2	D	8	LYS
2	D	11	VAL
2	D	14	LEU
2	D	26	GLU
2	D	40	ARG
2	D	66	LYS
2	D	90	GLU
2	D	91	LEU
2	D	141	LEU
1	E	3	SER

*Continued on next page...*

*Continued from previous page...*

Mol	Chain	Res	Type
1	E	11	LYS
1	E	14	TRP
1	E	45	HIS
1	E	67	THR
1	E	80	LEU
1	E	116	GLU
1	E	139	LYS
1	E	140	TYR
2	F	4	THR
2	F	6	GLU
2	F	52	ASP
2	F	65	LYS
2	F	132	LYS
1	G	16	LYS
1	G	45	HIS
1	G	85	ASP
1	G	113	LEU
1	G	127	LYS
1	G	131	SER
1	G	141	ARG
2	H	3	LEU
2	H	14	LEU
2	H	17	LYS
2	H	19	ASN
2	H	20	VAL
2	H	22	GLU
2	H	47	ASP
2	H	65	LYS
1	I	16	LYS
1	I	41	THR
1	I	45	HIS
1	I	72	HIS
1	I	76	MET
1	I	83	LEU
1	I	86	LEU
1	I	87	HIS
1	I	91	LEU
1	I	116	GLU
1	I	138	SER
2	J	6	GLU
2	J	14	LEU
2	J	40	ARG

*Continued on next page...*

*Continued from previous page...*

Mol	Chain	Res	Type
2	J	43	GLU
2	J	59	LYS
2	J	68	LEU
2	J	71	PHE
2	J	77	HIS
2	J	82	LYS
2	J	94	ASP
2	J	96	LEU
2	J	120	LYS
2	J	121	GLU
2	J	143	HIS
2	J	144	LYS
1	K	23	GLU
1	K	60	LYS
1	K	61	LYS
1	K	85	ASP
1	K	92	ARG
1	K	127	LYS
1	K	141	ARG
2	L	3	LEU
2	L	20	VAL
2	L	40	ARG
2	L	50	THR
2	L	59	LYS
2	L	63	HIS
2	L	66	LYS
2	L	77	HIS
2	L	78	LEU
2	L	95	LYS
2	L	101	GLU
2	L	120	LYS
2	L	143	HIS

Some sidechains can be flipped to improve hydrogen bonding and reduce clashes. All (14) such sidechains are listed below:

Mol	Chain	Res	Type
1	A	54	GLN
1	A	58	HIS
2	B	39	GLN
2	B	143	HIS
2	D	139	ASN
1	E	45	HIS

*Continued on next page...*

*Continued from previous page...*

Mol	Chain	Res	Type
1	E	97	ASN
1	G	54	GLN
1	G	58	HIS
1	I	58	HIS
2	J	19	ASN
2	J	102	ASN
1	K	58	HIS
2	L	63	HIS

### 5.3.3 RNA [i](#)

There are no RNA molecules in this entry.

### 5.4 Non-standard residues in protein, DNA, RNA chains [i](#)

There are no non-standard protein/DNA/RNA residues in this entry.

### 5.5 Carbohydrates [i](#)

There are no carbohydrates in this entry.

### 5.6 Ligand geometry [i](#)

13 ligands are modelled in this entry.

In the following table, the Counts columns list the number of bonds (or angles) for which Mogul statistics could be retrieved, the number of bonds (or angles) that are observed in the model and the number of bonds (or angles) that are defined in the Chemical Component Dictionary. The Link column lists molecule types, if any, to which the group is linked. The Z score for a bond length (or angle) is the number of standard deviations the observed value is removed from the expected value. A bond length (or angle) with  $|Z| > 2$  is considered an outlier worth inspection. RMSZ is the root-mean-square of all Z scores of the bond lengths (or angles).

Mol	Type	Chain	Res	Link	Bond lengths			Bond angles		
					Counts	RMSZ	$\# Z  > 2$	Counts	RMSZ	$\# Z  > 2$
3	HNI	H	201	2	33,50,50	4.63	19 (57%)	22,82,82	5.52	11 (50%)
5	PEM	I	202	-	23,26,26	0.88	1 (4%)	32,36,36	1.00	1 (3%)
4	HEM	B	201	2	27,50,50	1.17	2 (7%)	17,82,82	1.47	4 (23%)
3	HNI	L	201	-	33,50,50	4.74	18 (54%)	22,82,82	5.23	9 (40%)
3	HNI	A	201	1	33,50,50	4.89	17 (51%)	22,82,82	5.44	10 (45%)

Mol	Type	Chain	Res	Link	Bond lengths			Bond angles		
					Counts	RMSZ	# Z  > 2	Counts	RMSZ	# Z  > 2
4	HEM	K	201	-	27,50,50	1.22	2 (7%)	17,82,82	1.98	5 (29%)
3	HNI	E	201	1	33,50,50	4.54	18 (54%)	22,82,82	5.34	11 (50%)
3	HNI	D	201	2	33,50,50	4.57	18 (54%)	22,82,82	5.53	11 (50%)
4	HEM	C	201	1	27,50,50	1.46	2 (7%)	17,82,82	2.12	7 (41%)
4	HEM	G	201	1	27,50,50	1.43	4 (14%)	17,82,82	1.90	5 (29%)
4	HEM	F	201	2	27,50,50	1.32	3 (11%)	17,82,82	2.11	6 (35%)
4	HEM	J	201	2	27,50,50	1.43	4 (14%)	17,82,82	1.43	4 (23%)
3	HNI	I	201	-	33,50,50	4.90	19 (57%)	22,82,82	5.19	11 (50%)

In the following table, the Chirals column lists the number of chiral outliers, the number of chiral centers analysed, the number of these observed in the model and the number defined in the Chemical Component Dictionary. Similar counts are reported in the Torsion and Rings columns. '-' means no outliers of that kind were identified.

Mol	Type	Chain	Res	Link	Chirals	Torsions	Rings
3	HNI	H	201	2	-	5/8/94/94	-
5	PEM	I	202	-	-	12/15/21/21	0/2/2/2
4	HEM	B	201	2	-	2/6/54/54	-
3	HNI	L	201	-	-	0/8/94/94	-
3	HNI	A	201	1	-	3/8/94/94	-
4	HEM	K	201	-	-	0/6/54/54	-
3	HNI	E	201	1	-	3/8/94/94	-
3	HNI	D	201	2	-	1/8/94/94	-
4	HEM	C	201	1	-	2/6/54/54	-
4	HEM	G	201	1	-	0/6/54/54	-
4	HEM	F	201	2	-	2/6/54/54	-
4	HEM	J	201	2	-	2/6/54/54	-
3	HNI	I	201	-	-	2/8/94/94	-

All (127) bond length outliers are listed below:

Mol	Chain	Res	Type	Atoms	Z	Observed(Å)	Ideal(Å)
3	L	201	HNI	CHD-C4C	-10.74	1.34	1.53
3	I	201	HNI	CHC-C1C	-10.69	1.34	1.53
3	A	201	HNI	CHC-C1C	-10.69	1.34	1.53
3	I	201	HNI	CHA-C1A	-10.47	1.35	1.53
3	E	201	HNI	CHA-C1A	-10.40	1.35	1.53
3	L	201	HNI	CHB-C4A	-10.11	1.35	1.53

*Continued on next page...*

*Continued from previous page...*

Mol	Chain	Res	Type	Atoms	Z	Observed(Å)	Ideal(Å)
3	H	201	HNI	CHA-C1A	-9.97	1.36	1.53
3	I	201	HNI	CHD-C4C	-9.96	1.36	1.53
3	A	201	HNI	CHB-C4A	-9.88	1.36	1.53
3	H	201	HNI	CHB-C4A	-9.87	1.36	1.53
3	D	201	HNI	CHD-C4C	-9.65	1.36	1.53
3	A	201	HNI	CHA-C1A	-9.63	1.36	1.53
3	E	201	HNI	CHB-C4A	-9.61	1.36	1.53
3	A	201	HNI	CHD-C4C	-9.61	1.36	1.53
3	H	201	HNI	CHC-C1C	-9.47	1.37	1.53
3	D	201	HNI	CHC-C1C	-9.44	1.37	1.53
3	I	201	HNI	CHB-C4A	-9.21	1.37	1.53
3	D	201	HNI	CHB-C4A	-9.19	1.37	1.53
3	L	201	HNI	CHA-C1A	-9.12	1.37	1.53
3	E	201	HNI	CHC-C1C	-9.06	1.37	1.53
3	L	201	HNI	CHC-C1C	-8.96	1.37	1.53
3	E	201	HNI	CHD-C4C	-8.95	1.37	1.53
3	H	201	HNI	CHD-C4C	-8.78	1.38	1.53
3	D	201	HNI	CHA-C1A	-8.77	1.38	1.53
3	H	201	HNI	C1D-C2D	8.57	1.49	1.38
3	I	201	HNI	C1D-C2D	8.24	1.49	1.38
3	L	201	HNI	C4D-C3D	8.01	1.49	1.38
3	D	201	HNI	C4D-C3D	8.01	1.49	1.38
3	L	201	HNI	C1D-C2D	7.72	1.48	1.38
3	H	201	HNI	C4D-C3D	7.63	1.48	1.38
3	E	201	HNI	C1D-C2D	7.57	1.48	1.38
3	A	201	HNI	C4D-C3D	7.41	1.48	1.38
3	E	201	HNI	C4D-C3D	7.19	1.48	1.38
3	A	201	HNI	C3A-C2A	6.95	1.39	1.34
3	A	201	HNI	C1D-C2D	6.84	1.47	1.38
3	I	201	HNI	C4D-C3D	6.46	1.47	1.38
3	I	201	HNI	C3A-C2A	6.25	1.39	1.34
3	I	201	HNI	CHC-C4B	-6.24	1.35	1.51
3	A	201	HNI	CHC-C4B	-6.21	1.36	1.51
3	D	201	HNI	C1D-C2D	5.88	1.46	1.38
3	D	201	HNI	C3A-C2A	5.66	1.38	1.34
3	L	201	HNI	CHC-C4B	-5.61	1.37	1.51
3	A	201	HNI	C1D-ND	-5.52	1.32	1.37
3	H	201	HNI	CHA-C4D	-5.35	1.38	1.51
3	H	201	HNI	CHC-C4B	-5.34	1.38	1.51
3	D	201	HNI	CHC-C4B	-5.34	1.38	1.51
3	L	201	HNI	CHD-C1D	-5.28	1.38	1.51
3	L	201	HNI	CHB-C1B	-5.27	1.38	1.51

*Continued on next page...*

*Continued from previous page...*

Mol	Chain	Res	Type	Atoms	Z	Observed(Å)	Ideal(Å)
3	E	201	HNI	C4C-C3C	-5.17	1.43	1.51
3	E	201	HNI	CHA-C4D	-5.17	1.38	1.51
3	E	201	HNI	CHC-C4B	-5.14	1.38	1.51
3	D	201	HNI	CHD-C1D	-5.11	1.38	1.51
4	C	201	HEM	C3B-C2B	-5.11	1.33	1.40
3	L	201	HNI	CHA-C4D	-5.00	1.39	1.51
4	G	201	HEM	C3B-C2B	-4.95	1.33	1.40
3	A	201	HNI	CHA-C4D	-4.95	1.39	1.51
3	I	201	HNI	CHA-C4D	-4.94	1.39	1.51
3	E	201	HNI	CHD-C1D	-4.92	1.39	1.51
3	I	201	HNI	C4B-NB	-4.92	1.33	1.37
3	D	201	HNI	CHA-C4D	-4.83	1.39	1.51
3	A	201	HNI	C4C-C3C	-4.80	1.43	1.51
3	D	201	HNI	CHB-C1B	-4.79	1.39	1.51
3	A	201	HNI	C4B-NB	-4.79	1.33	1.37
3	E	201	HNI	CHB-C1B	-4.77	1.39	1.51
3	H	201	HNI	C1B-NB	-4.77	1.33	1.37
3	I	201	HNI	C1B-C2B	4.75	1.44	1.38
3	H	201	HNI	CHB-C1B	-4.72	1.39	1.51
3	I	201	HNI	CHD-C1D	-4.69	1.39	1.51
3	L	201	HNI	C1B-NB	-4.69	1.33	1.37
3	L	201	HNI	C4C-C3C	-4.66	1.44	1.51
3	D	201	HNI	C4C-C3C	-4.62	1.44	1.51
3	I	201	HNI	CHB-C1B	-4.62	1.39	1.51
3	A	201	HNI	CHD-C1D	-4.56	1.40	1.51
3	A	201	HNI	C1B-C2B	4.45	1.44	1.38
3	A	201	HNI	CHB-C1B	-4.40	1.40	1.51
3	H	201	HNI	C4C-C3C	-4.40	1.44	1.51
3	I	201	HNI	C1D-ND	-4.39	1.33	1.37
3	H	201	HNI	CHD-C1D	-4.36	1.40	1.51
3	A	201	HNI	C4D-ND	-4.31	1.33	1.37
3	L	201	HNI	C1D-ND	-4.27	1.33	1.37
3	I	201	HNI	C4C-C3C	-4.23	1.44	1.51
3	D	201	HNI	C1D-ND	-4.13	1.33	1.37
3	D	201	HNI	C4D-ND	-4.13	1.33	1.37
3	E	201	HNI	C3A-C2A	4.05	1.37	1.34
3	L	201	HNI	C3B-C2B	-4.01	1.34	1.40
3	H	201	HNI	C3B-C2B	-4.00	1.34	1.40
3	D	201	HNI	C1B-C2B	3.94	1.43	1.38
3	L	201	HNI	C4B-NB	-3.84	1.34	1.37
3	I	201	HNI	C4D-ND	-3.84	1.34	1.37
3	E	201	HNI	C1B-NB	-3.83	1.34	1.37

*Continued on next page...*



*Continued from previous page...*

Mol	Chain	Res	Type	Atoms	Z	Observed(Å)	Ideal(Å)
3	H	201	HNI	C3A-C2A	3.82	1.37	1.34
4	B	201	HEM	C3B-C2B	-3.81	1.35	1.40
4	F	201	HEM	C3B-C2B	-3.76	1.35	1.40
3	D	201	HNI	C3B-C2B	-3.74	1.35	1.40
3	A	201	HNI	C1B-NB	-3.68	1.34	1.37
3	D	201	HNI	C4B-NB	-3.51	1.34	1.37
4	J	201	HEM	C3B-C2B	-3.51	1.35	1.40
3	H	201	HNI	C1D-ND	-3.44	1.34	1.37
3	L	201	HNI	C1B-C2B	3.43	1.42	1.38
3	E	201	HNI	C1B-C2B	3.42	1.42	1.38
3	I	201	HNI	C1B-NB	-3.36	1.34	1.37
3	E	201	HNI	C1D-ND	-3.28	1.34	1.37
4	K	201	HEM	C3B-C2B	-3.11	1.36	1.40
3	L	201	HNI	C3A-C2A	3.10	1.36	1.34
3	E	201	HNI	C3B-C2B	-2.89	1.36	1.40
4	F	201	HEM	C1A-NA	2.79	1.41	1.36
4	J	201	HEM	C4D-C3D	2.79	1.48	1.42
3	E	201	HNI	C4B-NB	-2.75	1.34	1.37
3	E	201	HNI	C4D-ND	-2.66	1.35	1.37
3	H	201	HNI	C1B-C2B	2.62	1.41	1.38
4	B	201	HEM	C4D-C3D	2.60	1.48	1.42
3	I	201	HNI	C3B-C2B	-2.52	1.36	1.40
3	D	201	HNI	C2C-C3C	2.49	1.41	1.35
4	J	201	HEM	C4A-NA	2.46	1.41	1.36
4	K	201	HEM	C4D-C3D	2.45	1.48	1.42
3	H	201	HNI	C2C-C3C	2.37	1.41	1.35
5	I	202	PEM	C4-CL	2.35	1.79	1.74
4	J	201	HEM	C4B-CHC	-2.34	1.34	1.41
4	G	201	HEM	C1A-NA	2.34	1.41	1.36
4	G	201	HEM	C4D-C3D	2.29	1.47	1.42
3	H	201	HNI	C4D-ND	-2.28	1.35	1.37
4	C	201	HEM	CAD-C3D	-2.26	1.48	1.52
3	L	201	HNI	C2C-C3C	2.18	1.41	1.35
4	F	201	HEM	C4D-C3D	2.12	1.47	1.42
3	I	201	HNI	CAA-C2A	2.07	1.54	1.51
4	G	201	HEM	C3C-C2C	-2.03	1.37	1.40
3	H	201	HNI	C4B-NB	-2.02	1.35	1.37

All (95) bond angle outliers are listed below:

Mol	Chain	Res	Type	Atoms	Z	Observed(°)	Ideal(°)
3	E	201	HNI	CHD-C4C-NC	12.61	125.99	110.03

*Continued on next page...*

*Continued from previous page...*

Mol	Chain	Res	Type	Atoms	Z	Observed(°)	Ideal(°)
3	H	201	HNI	CHD-C4C-NC	12.39	125.71	110.03
3	D	201	HNI	CHD-C4C-NC	12.25	125.53	110.03
3	H	201	HNI	CHC-C1C-NC	12.20	125.47	110.03
3	L	201	HNI	CHC-C1C-NC	11.90	125.08	110.03
3	D	201	HNI	CHC-C1C-NC	11.88	125.06	110.03
3	E	201	HNI	CHC-C1C-NC	11.86	125.04	110.03
3	D	201	HNI	CHB-C4A-NA	11.80	124.96	110.03
3	H	201	HNI	CHA-C1A-NA	11.78	124.94	110.03
3	D	201	HNI	CHA-C1A-NA	11.70	124.84	110.03
3	A	201	HNI	CHD-C4C-NC	11.63	124.75	110.03
3	A	201	HNI	CHC-C1C-NC	11.62	124.74	110.03
3	A	201	HNI	CHB-C4A-NA	11.42	124.48	110.03
3	I	201	HNI	CHC-C1C-NC	11.33	124.36	110.03
3	L	201	HNI	CHD-C4C-NC	11.31	124.34	110.03
3	I	201	HNI	CHD-C4C-NC	11.16	124.15	110.03
3	L	201	HNI	CHA-C1A-NA	10.92	123.84	110.03
3	A	201	HNI	CHA-C1A-NA	10.72	123.59	110.03
3	E	201	HNI	CHB-C4A-NA	10.62	123.47	110.03
3	I	201	HNI	CHB-C4A-NA	10.52	123.34	110.03
3	L	201	HNI	CHB-C4A-NA	10.47	123.28	110.03
3	H	201	HNI	CHB-C4A-NA	10.45	123.26	110.03
3	I	201	HNI	CHA-C1A-NA	10.29	123.06	110.03
3	E	201	HNI	CHA-C1A-NA	10.24	122.99	110.03
3	I	201	HNI	CHC-C4B-C3B	-6.18	121.24	129.55
3	A	201	HNI	CHC-C4B-C3B	-5.48	122.19	129.55
3	D	201	HNI	CHD-C1D-C2D	-5.47	119.99	129.45
4	C	201	HEM	CBD-CAD-C3D	-5.47	102.41	112.48
3	A	201	HNI	CHB-C1B-C2B	-5.43	120.05	129.45
3	H	201	HNI	CHB-C1B-C2B	-5.40	120.10	129.45
3	A	201	HNI	CHD-C1D-C2D	-5.32	120.24	129.45
3	L	201	HNI	CHB-C1B-C2B	-5.29	120.30	129.45
3	L	201	HNI	CHD-C1D-C2D	-5.20	120.46	129.45
3	H	201	HNI	CAA-CBA-CGA	-5.08	104.15	112.67
3	E	201	HNI	CHB-C1B-C2B	-5.06	120.69	129.45
3	D	201	HNI	CHB-C1B-C2B	-5.03	120.75	129.45
3	I	201	HNI	CHB-C1B-C2B	-4.72	121.28	129.45
4	G	201	HEM	CAD-CBD-CGD	-4.67	104.84	112.67
3	E	201	HNI	CHD-C1D-C2D	-4.67	121.38	129.45
3	L	201	HNI	CHC-C4B-C3B	-4.37	123.68	129.55
3	I	201	HNI	CHD-C1D-C2D	-4.28	122.03	129.45
3	E	201	HNI	CHC-C4B-C3B	-4.18	123.94	129.55
4	K	201	HEM	CBA-CAA-C2A	-4.15	104.82	112.49

*Continued on next page...*

*Continued from previous page...*

Mol	Chain	Res	Type	Atoms	Z	Observed(°)	Ideal(°)
4	F	201	HEM	CBD-CAD-C3D	-4.15	104.84	112.48
3	H	201	HNI	CHC-C4B-C3B	-4.14	123.99	129.55
3	H	201	HNI	CHD-C1D-C2D	-4.13	122.31	129.45
3	D	201	HNI	CHC-C4B-C3B	-3.86	124.35	129.55
4	K	201	HEM	C1D-C2D-C3D	-3.80	104.35	107.00
3	A	201	HNI	CMB-C2B-C3B	3.68	131.56	124.68
3	I	201	HNI	C3B-C4B-NB	3.64	112.19	107.17
4	F	201	HEM	C1D-C2D-C3D	-3.54	104.53	107.00
5	I	202	PEM	C16-O2-C10	3.50	126.97	121.04
3	D	201	HNI	CAA-CBA-CGA	-3.46	106.86	112.67
3	E	201	HNI	CAD-CBD-CGD	-3.45	106.89	112.67
3	A	201	HNI	C3B-C4B-NB	3.43	111.90	107.17
4	F	201	HEM	CMB-C2B-C3B	3.22	130.70	124.68
4	C	201	HEM	C4C-C3C-C2C	-3.07	104.75	106.90
4	J	201	HEM	CBD-CAD-C3D	-2.97	107.00	112.48
4	C	201	HEM	C1D-C2D-C3D	-2.93	104.96	107.00
4	B	201	HEM	CAA-CBA-CGA	-2.92	107.77	112.67
4	G	201	HEM	CAA-CBA-CGA	-2.92	107.78	112.67
3	L	201	HNI	C3B-C4B-NB	2.90	111.17	107.17
4	J	201	HEM	C3B-C4B-NB	2.79	112.82	109.21
4	F	201	HEM	CBA-CAA-C2A	2.76	117.58	112.49
4	C	201	HEM	CAD-CBD-CGD	-2.70	108.15	112.67
3	I	201	HNI	CBC-CAC-C3C	-2.64	118.03	127.20
4	F	201	HEM	C4C-C3C-C2C	-2.63	105.06	106.90
3	E	201	HNI	CMB-C2B-C3B	2.58	129.51	124.68
3	L	201	HNI	CMD-C2D-C3D	2.56	129.77	124.94
4	G	201	HEM	CMB-C2B-C3B	2.56	129.47	124.68
3	D	201	HNI	C3B-C4B-NB	2.56	110.69	107.17
4	K	201	HEM	CMB-C2B-C3B	2.55	129.46	124.68
4	C	201	HEM	C4A-C3A-C2A	-2.51	105.25	107.00
4	B	201	HEM	CMC-C2C-C3C	2.44	129.24	124.68
3	A	201	HNI	CBC-CAC-C3C	-2.40	118.84	127.20
4	K	201	HEM	C3B-C4B-NB	2.39	112.30	109.21
3	I	201	HNI	CAD-C3D-C4D	-2.38	125.62	127.30
3	E	201	HNI	CBC-CAC-C3C	-2.38	118.94	127.20
3	H	201	HNI	CBC-CAC-C3C	-2.36	118.98	127.20
4	F	201	HEM	CMD-C2D-C3D	2.33	129.34	124.94
4	J	201	HEM	CMC-C2C-C3C	2.29	128.97	124.68
4	K	201	HEM	CMC-C2C-C3C	2.29	128.96	124.68
3	D	201	HNI	CMD-C2D-C3D	2.21	129.10	124.94
4	B	201	HEM	C4A-C3A-C2A	-2.20	105.47	107.00
3	H	201	HNI	CBA-CAA-C2A	-2.20	110.46	114.35

*Continued on next page...*

*Continued from previous page...*

Mol	Chain	Res	Type	Atoms	Z	Observed(°)	Ideal(°)
3	I	201	HNI	CMB-C2B-C3B	2.19	128.77	124.68
4	G	201	HEM	C3B-C4B-NB	2.11	111.93	109.21
3	H	201	HNI	C3B-C4B-NB	2.11	110.08	107.17
4	C	201	HEM	CMD-C2D-C3D	2.10	128.91	124.94
3	D	201	HNI	CBC-CAC-C3C	-2.09	119.95	127.20
3	E	201	HNI	C3B-C4B-NB	2.07	110.02	107.17
4	G	201	HEM	CBD-CAD-C3D	-2.06	108.68	112.48
4	B	201	HEM	CMD-C2D-C1D	-2.04	125.32	128.46
4	J	201	HEM	C4C-C3C-C2C	-2.02	105.49	106.90
4	C	201	HEM	CMC-C2C-C3C	2.01	128.44	124.68

There are no chirality outliers.

All (34) torsion outliers are listed below:

Mol	Chain	Res	Type	Atoms
3	H	201	HNI	C1A-C2A-CAA-CBA
3	H	201	HNI	C2D-C3D-CAD-CBD
3	H	201	HNI	C4D-C3D-CAD-CBD
5	I	202	PEM	O1-C7-N1-C8
5	I	202	PEM	N1-C8-C9-C13
4	B	201	HEM	C2D-C3D-CAD-CBD
4	F	201	HEM	C1A-C2A-CAA-CBA
4	F	201	HEM	C3A-C2A-CAA-CBA
4	J	201	HEM	C1A-C2A-CAA-CBA
4	J	201	HEM	C3A-C2A-CAA-CBA
5	I	202	PEM	C1-C7-N1-C8
5	I	202	PEM	C6-C1-C7-O1
5	I	202	PEM	C6-C1-C7-N1
5	I	202	PEM	C2-C1-C7-N1
5	I	202	PEM	C2-C1-C7-O1
3	E	201	HNI	C2A-CAA-CBA-CGA
3	D	201	HNI	C2A-CAA-CBA-CGA
3	A	201	HNI	C2C-C3C-CAC-CBC
3	E	201	HNI	C2C-C3C-CAC-CBC
3	I	201	HNI	C2C-C3C-CAC-CBC
3	E	201	HNI	C4C-C3C-CAC-CBC
3	H	201	HNI	C3A-C2A-CAA-CBA
4	C	201	HEM	C2A-CAA-CBA-CGA
4	B	201	HEM	C4D-C3D-CAD-CBD
4	C	201	HEM	C1A-C2A-CAA-CBA
5	I	202	PEM	C12-C13-C9-C8
5	I	202	PEM	C14-C13-C9-C8

*Continued on next page...*

*Continued from previous page...*

Mol	Chain	Res	Type	Atoms
3	A	201	HNI	C4C-C3C-CAC-CBC
3	I	201	HNI	C4C-C3C-CAC-CBC
3	A	201	HNI	C2A-CAA-CBA-CGA
5	I	202	PEM	C17-C16-O2-C10
5	I	202	PEM	C11-C10-O2-C16
5	I	202	PEM	C15-C10-O2-C16
3	H	201	HNI	C2C-C3C-CAC-CBC

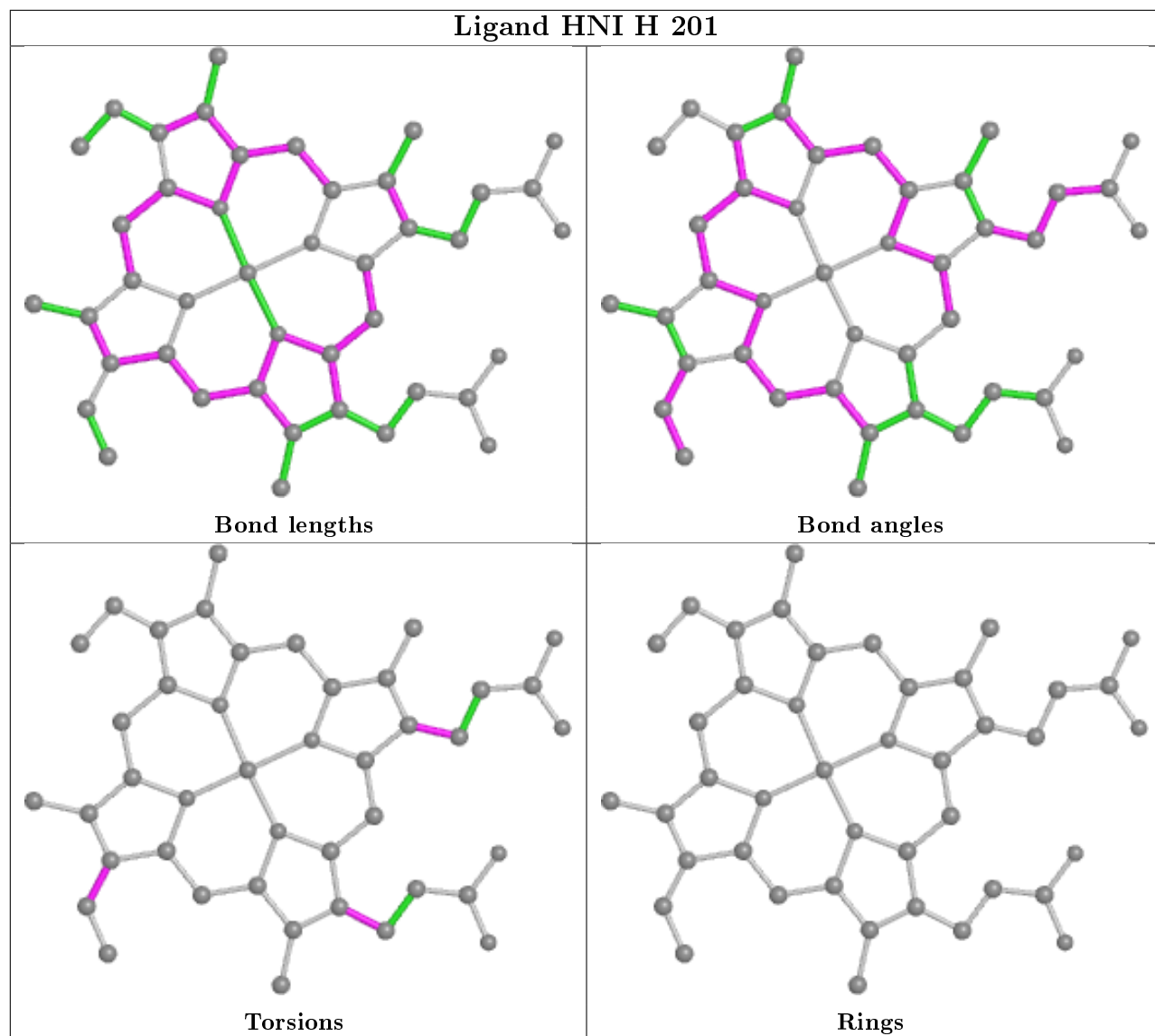
There are no ring outliers.

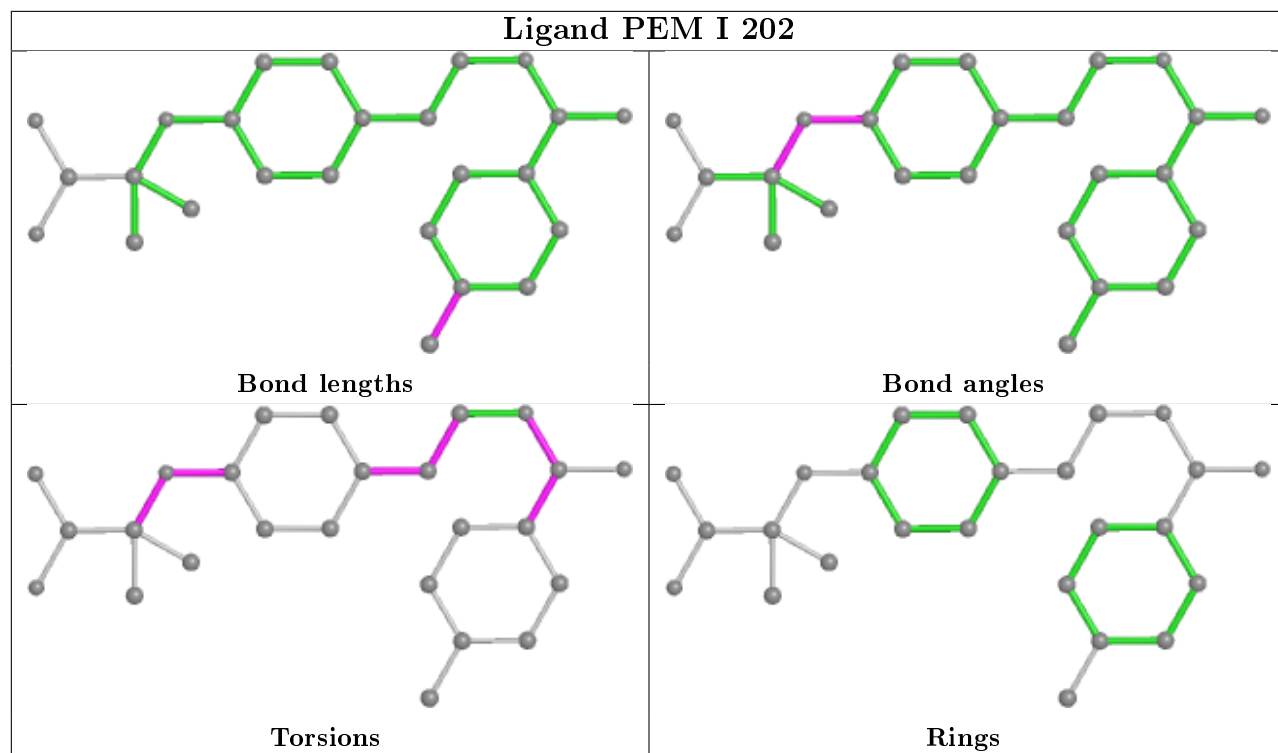
11 monomers are involved in 24 short contacts:

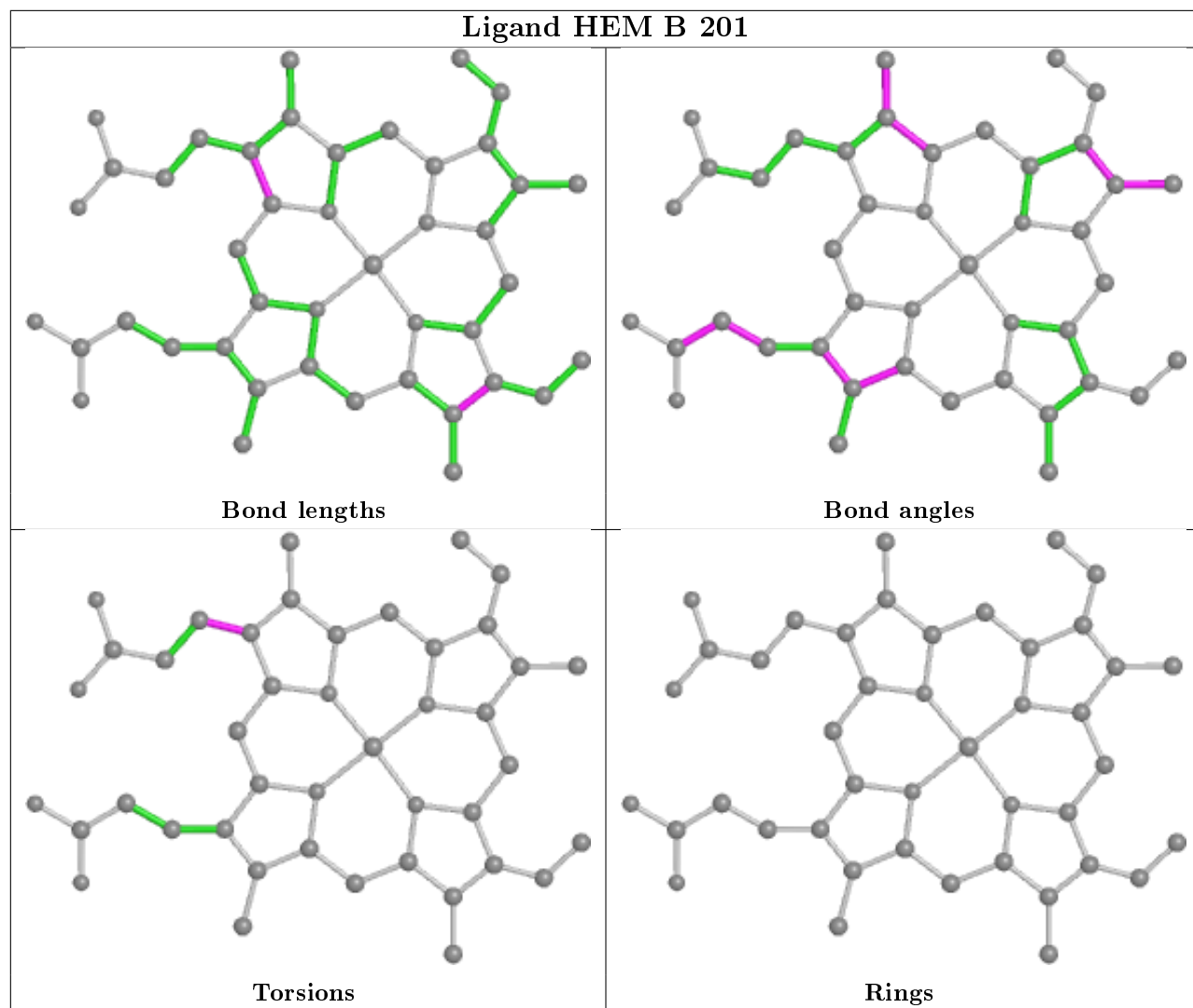
Mol	Chain	Res	Type	Clashes	Symm-Clashes
4	B	201	HEM	2	0
3	L	201	HNI	3	0
3	A	201	HNI	2	0
4	K	201	HEM	2	0
3	E	201	HNI	1	0
3	D	201	HNI	3	0
4	C	201	HEM	2	0
4	G	201	HEM	3	0
4	F	201	HEM	3	0
4	J	201	HEM	1	0
3	I	201	HNI	2	0

The following is a two-dimensional graphical depiction of Mogul quality analysis of bond lengths, bond angles, torsion angles, and ring geometry for all instances of the Ligand of Interest. In addition, ligands with molecular weight > 250 and outliers as shown on the validation Tables will also be included. For torsion angles, if less than 5% of the Mogul distribution of torsion angles is within 10 degrees of the torsion angle in question, then that torsion angle is considered an outlier. Any bond that is central to one or more torsion angles identified as an outlier by Mogul will be highlighted in the graph. For rings, the root-mean-square deviation (RMSD) between the ring in question and similar rings identified by Mogul is calculated over all ring torsion angles. If the average RMSD is greater than 60 degrees and the minimal RMSD between the ring in question and any Mogul-identified rings is also greater than 60 degrees, then that ring is considered an outlier. The outliers are highlighted in purple. The color gray indicates Mogul did not find sufficient equivalents in the CSD to analyse the geometry.

## Ligand HNI H 201

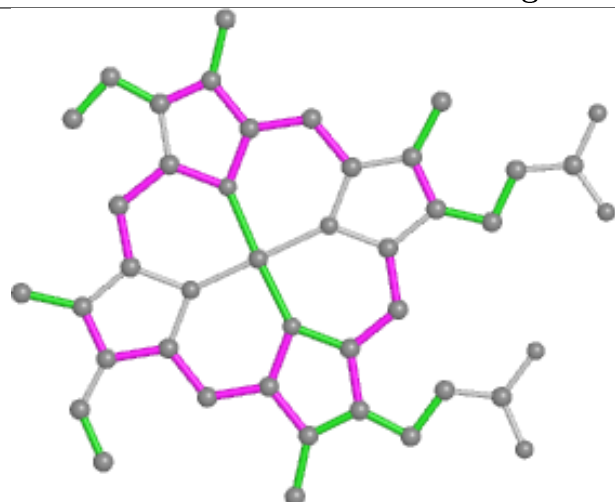




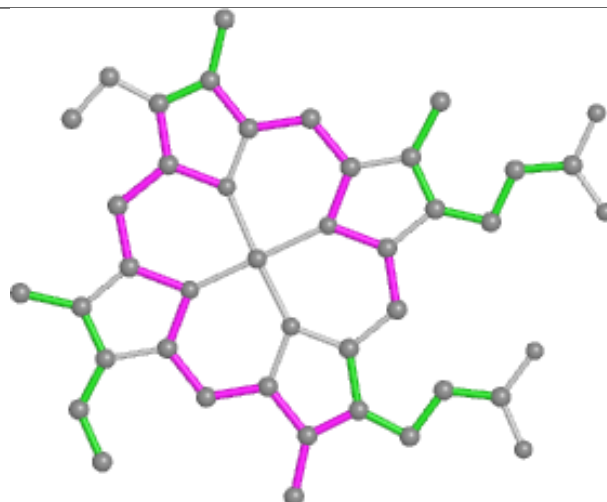




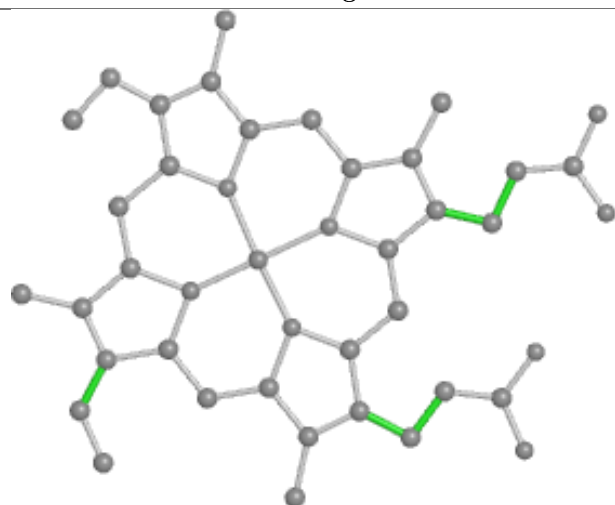
## Ligand HNI L 201



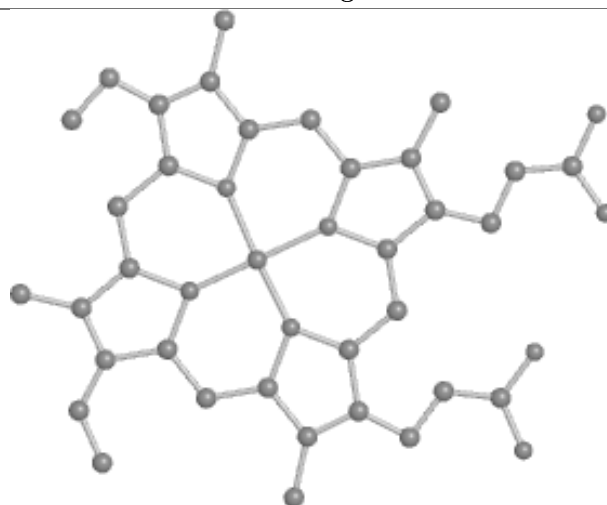
Bond lengths



Bond angles

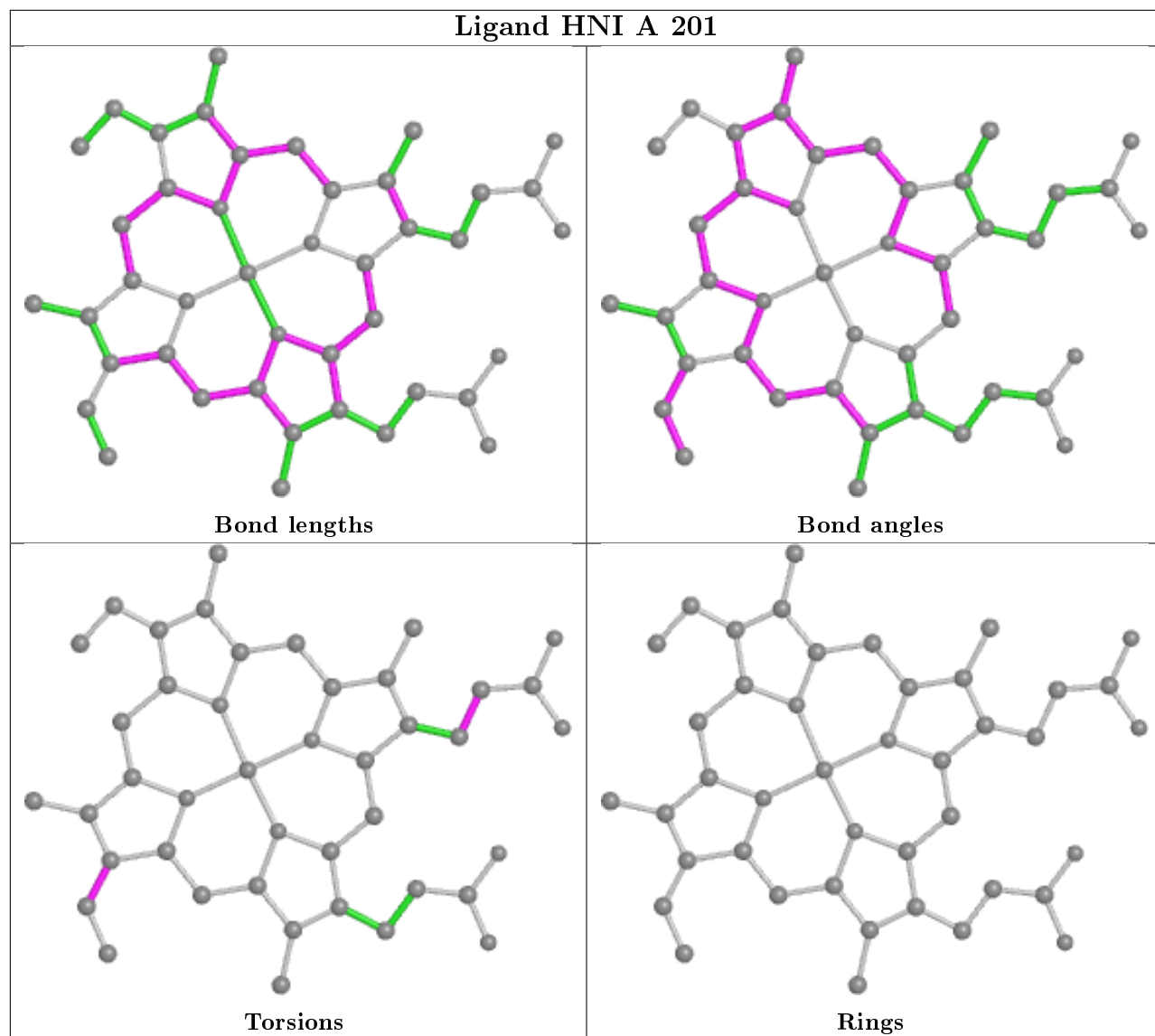


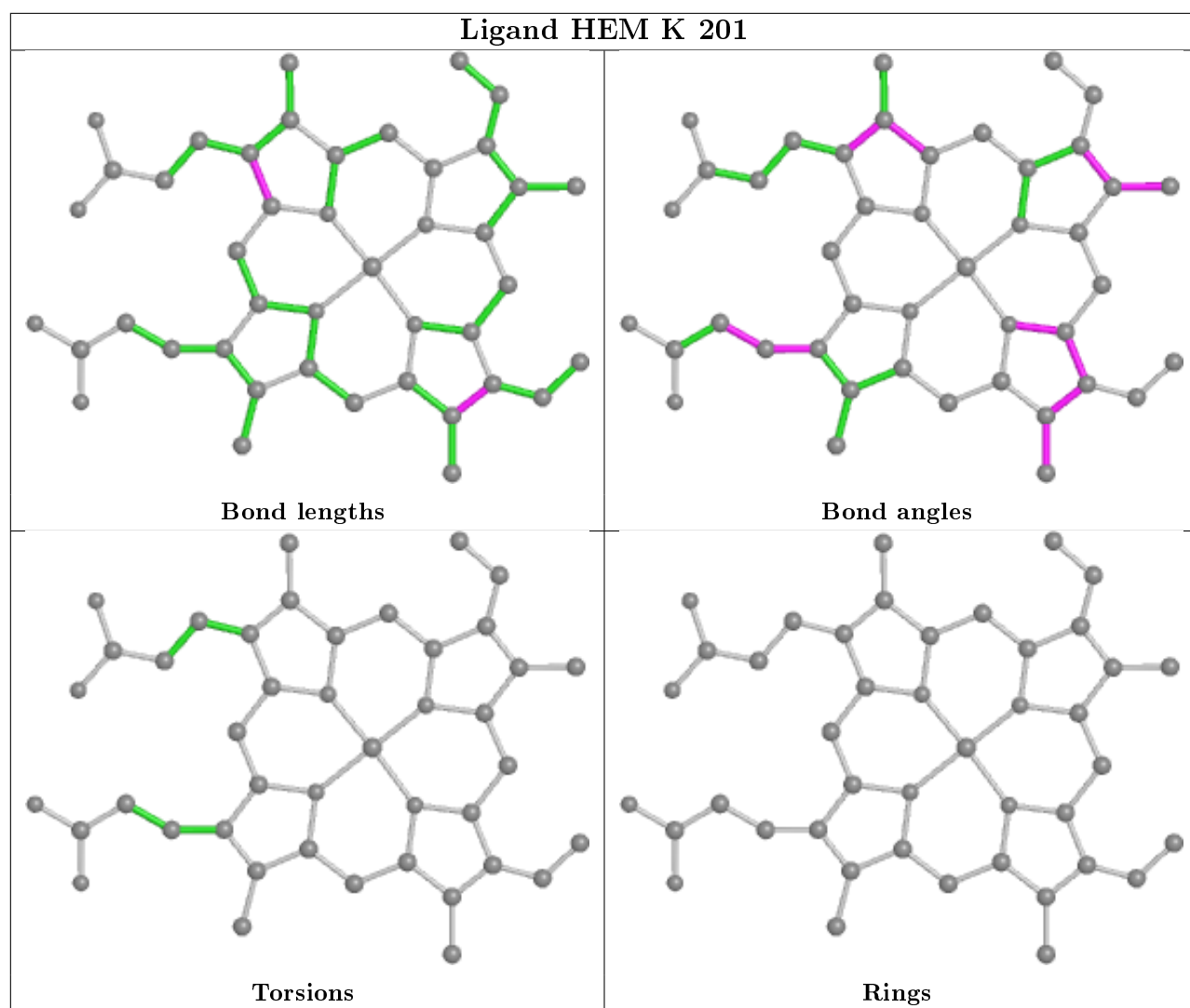
Torsions



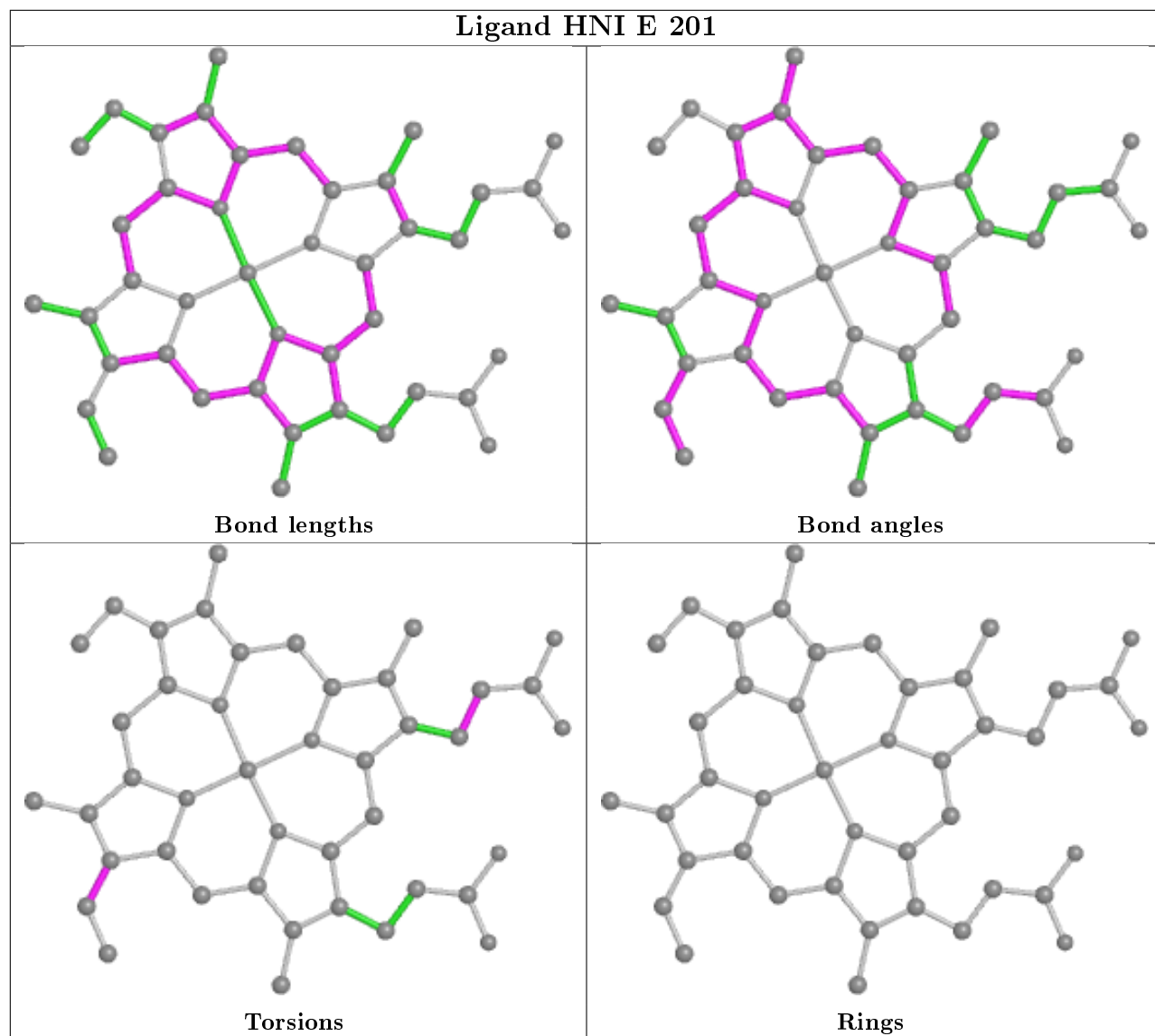
Rings

## Ligand HNI A 201

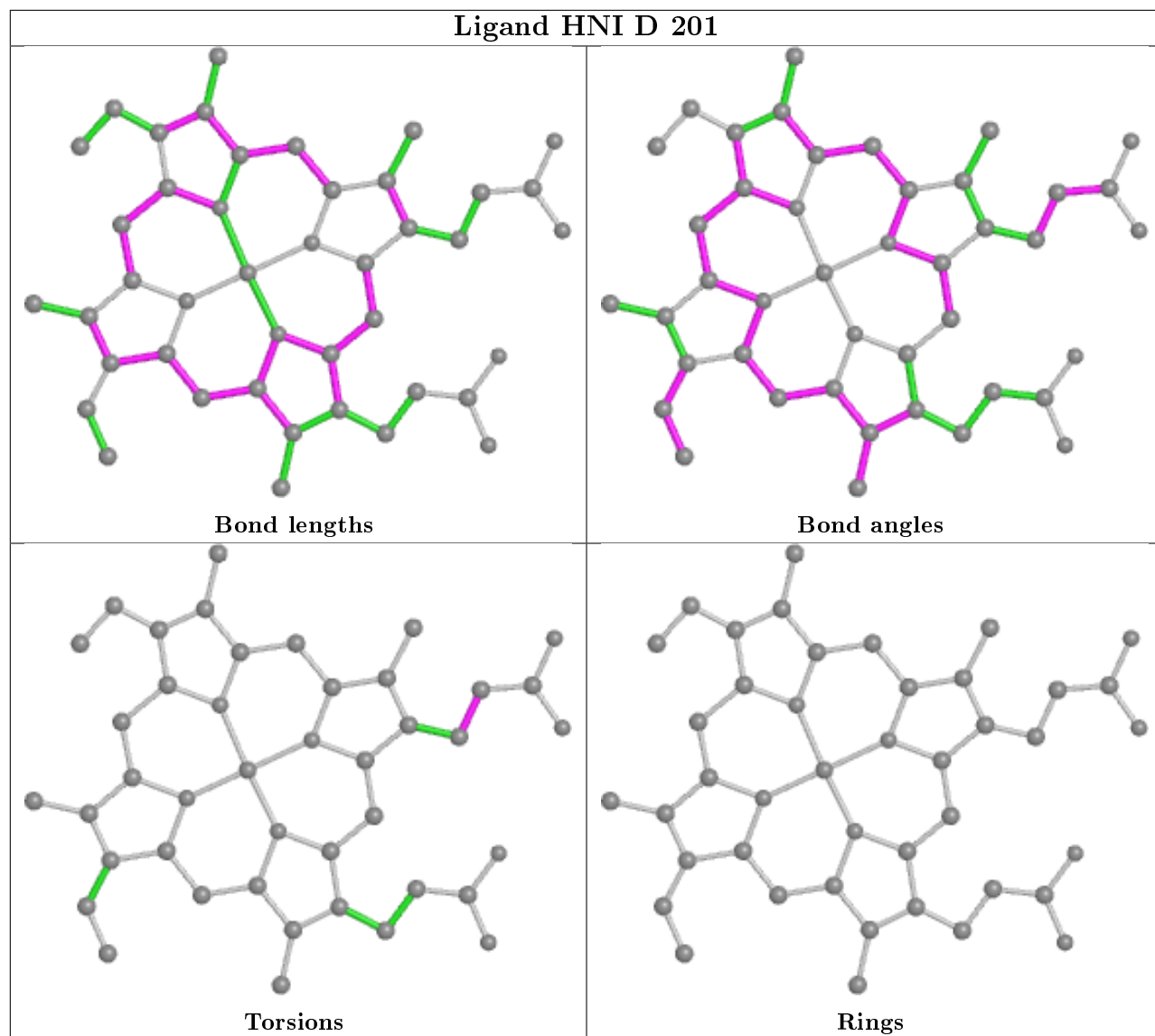


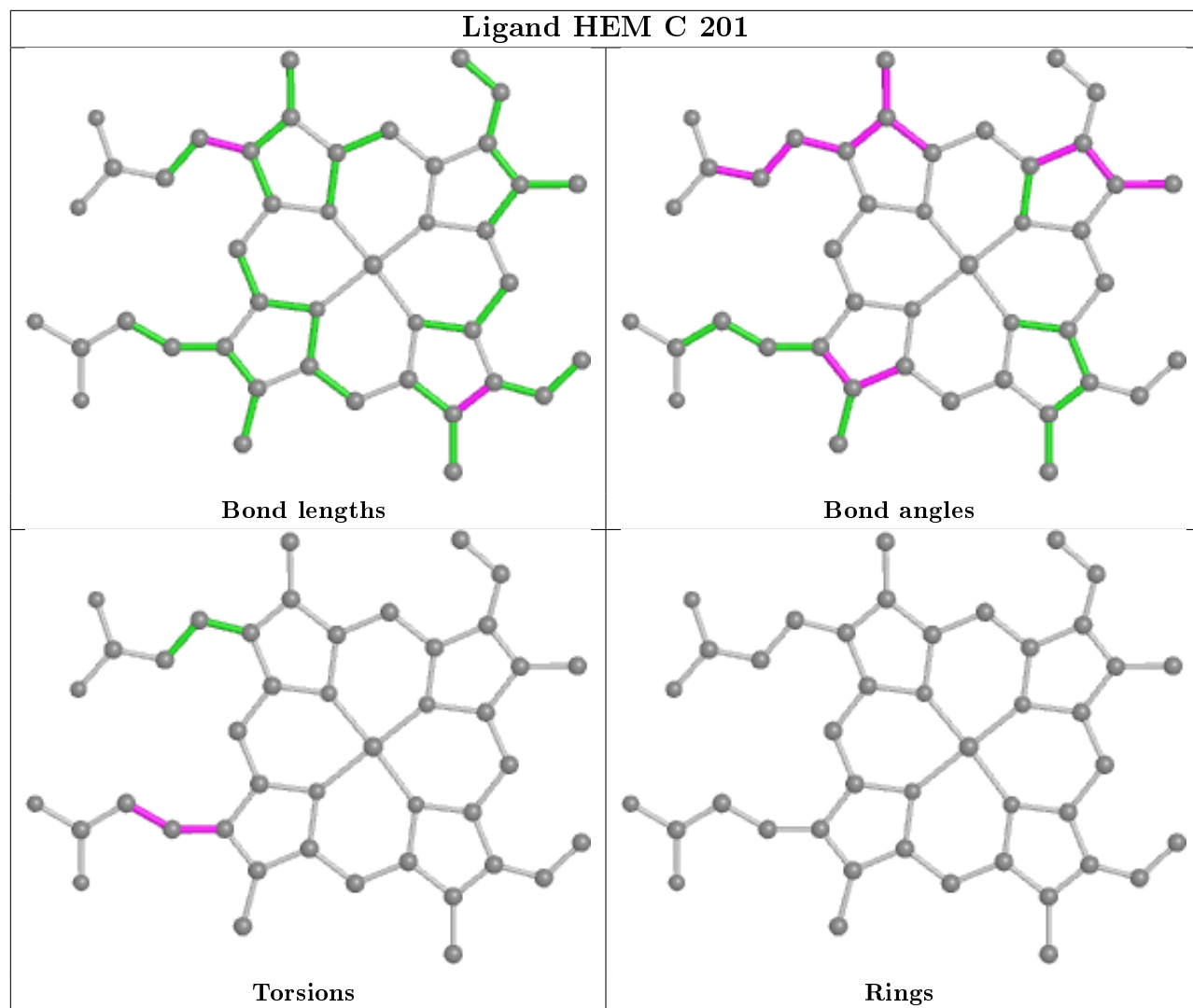


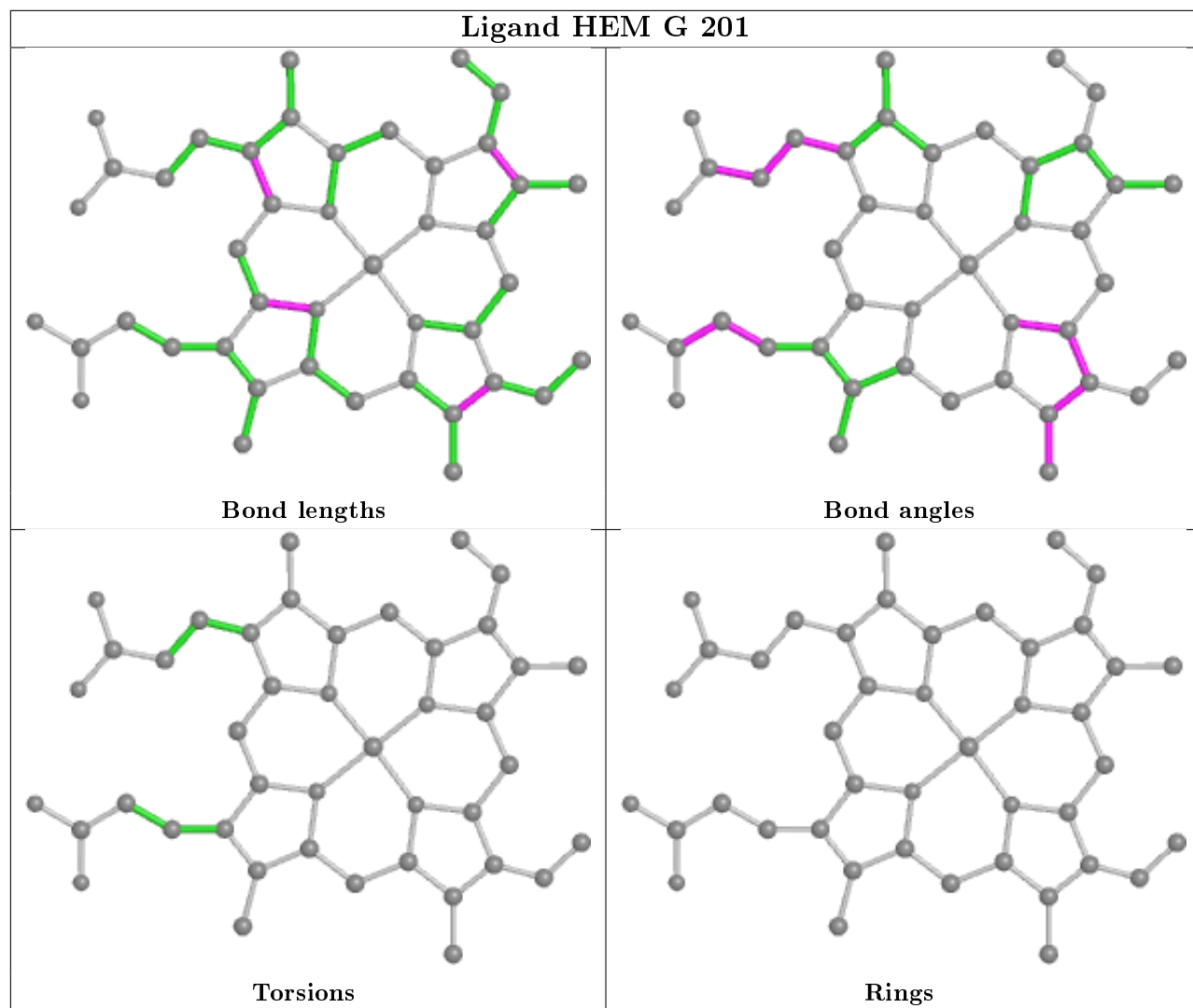
## Ligand HNI E 201

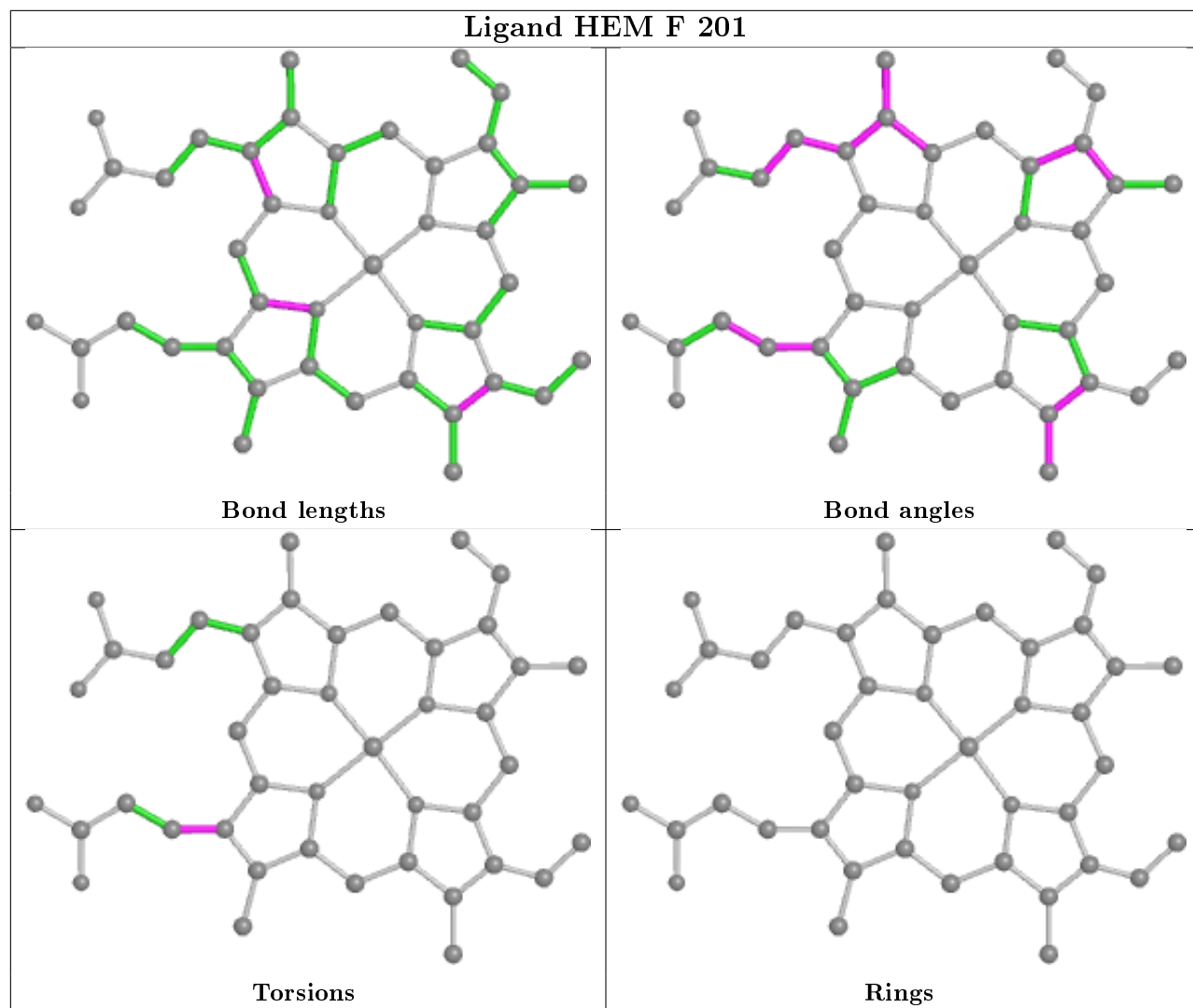


## Ligand HNI D 201

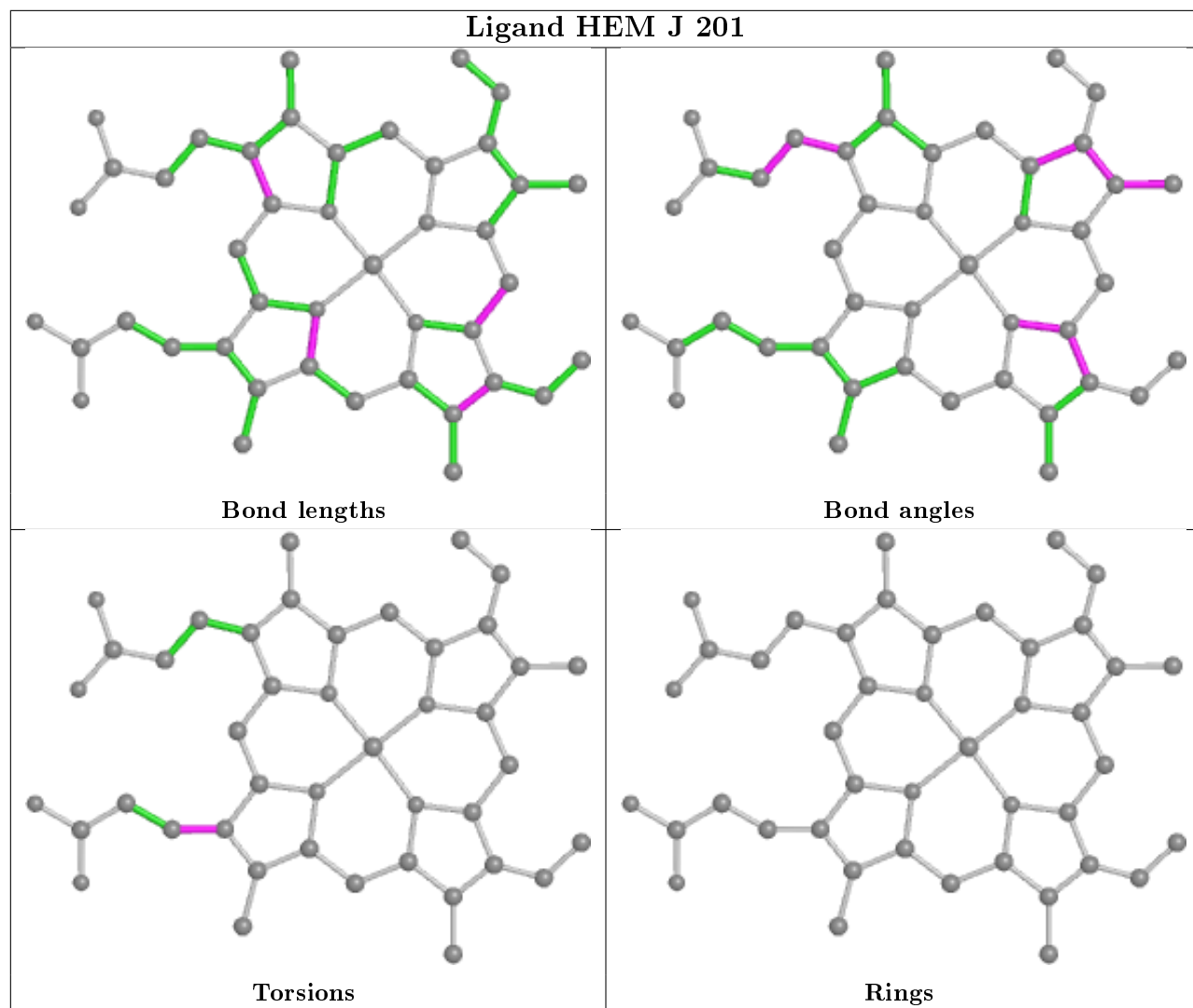


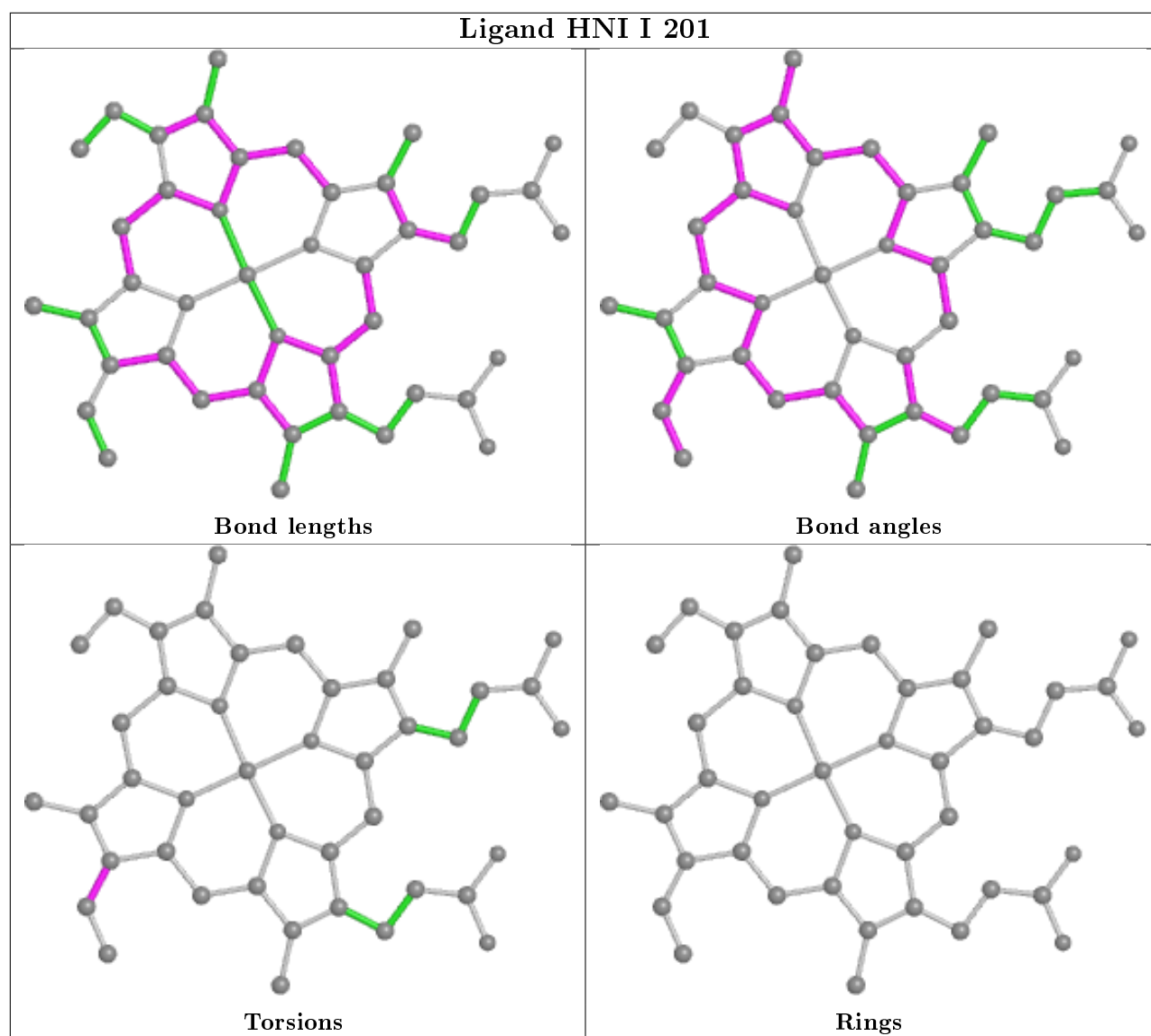












## 5.7 Other polymers [i](#)

There are no such residues in this entry.

## 5.8 Polymer linkage issues [i](#)

There are no chain breaks in this entry.

## 6 Fit of model and data ⓘ

### 6.1 Protein, DNA and RNA chains ⓘ

In the following table, the column labelled ‘#RSRZ> 2’ contains the number (and percentage) of RSRZ outliers, followed by percent RSRZ outliers for the chain as percentile scores relative to all X-ray entries and entries of similar resolution. The OWAB column contains the minimum, median, 95<sup>th</sup> percentile and maximum values of the occupancy-weighted average B-factor per residue. The column labelled ‘Q< 0.9’ lists the number of (and percentage) of residues with an average occupancy less than 0.9.

Mol	Chain	Analysed	<RSRZ>	#RSRZ>2	OWAB(Å <sup>2</sup> )	Q<0.9
1	A	140/141 (99%)	0.52	9 (6%) 19 16	45, 81, 124, 160	0
1	C	140/141 (99%)	0.43	12 (8%) 10 8	50, 74, 99, 124	0
1	E	140/141 (99%)	0.53	15 (10%) 6 4	48, 86, 110, 153	0
1	G	140/141 (99%)	0.18	6 (4%) 35 31	53, 72, 88, 121	0
1	I	140/141 (99%)	0.21	7 (5%) 28 25	44, 72, 105, 117	0
1	K	140/141 (99%)	0.14	5 (3%) 42 39	44, 70, 88, 116	0
2	B	145/146 (99%)	0.10	4 (2%) 53 49	43, 64, 93, 114	0
2	D	145/146 (99%)	0.63	13 (8%) 9 7	56, 83, 113, 121	0
2	F	145/146 (99%)	-0.06	2 (1%) 75 73	46, 62, 85, 113	0
2	H	145/146 (99%)	0.33	5 (3%) 45 41	58, 80, 107, 116	0
2	J	145/146 (99%)	0.09	4 (2%) 53 49	41, 63, 83, 120	0
2	L	145/146 (99%)	0.73	21 (14%) 2 1	52, 90, 118, 131	0
All	All	1710/1722 (99%)	0.32	103 (6%) 21 19	41, 73, 108, 160	0

All (103) RSRZ outliers are listed below:

Mol	Chain	Res	Type	RSRZ
1	A	140	TYR	10.7
2	D	20	VAL	9.5
1	I	141	ARG	6.1
1	K	141	ARG	5.9
1	A	141	ARG	5.5
1	C	140	TYR	5.5
1	C	70	VAL	5.3
2	J	145	TYR	5.2
2	L	145	TYR	5.2
2	L	94	ASP	5.1
2	L	146	HIS	4.9

*Continued on next page...*

*Continued from previous page...*

Mol	Chain	Res	Type	RSRZ
1	E	45	HIS	4.6
2	B	97	HIS	4.6
2	L	42	PHE	4.5
1	E	91	LEU	4.4
1	C	141	ARG	4.3
2	L	88	LEU	4.2
1	A	86	LEU	4.2
2	B	3	LEU	4.2
2	D	19	ASN	4.1
1	E	80	LEU	4.1
1	A	138	SER	4.0
2	D	78	LEU	3.9
1	E	141	ARG	3.9
1	A	2	LEU	3.9
1	A	15	GLY	3.7
1	E	46	PHE	3.6
1	G	45	HIS	3.6
2	L	40	ARG	3.6
2	L	97	HIS	3.5
2	L	58	PRO	3.5
1	A	13	ALA	3.3
2	H	56	GLY	3.3
2	L	95	LYS	3.3
2	F	145	TYR	3.3
2	H	145	TYR	3.3
2	L	43	GLU	3.3
1	G	115	ALA	3.2
1	G	141	ARG	3.2
2	J	146	HIS	3.2
1	C	138	SER	3.1
1	C	2	LEU	3.1
2	D	146	HIS	3.0
1	C	48	LEU	3.0
2	H	146	HIS	3.0
2	D	75	LEU	3.0
1	E	78	ASN	2.9
1	G	91	LEU	2.9
2	D	145	TYR	2.9
2	B	146	HIS	2.9
2	J	93	CYS	2.9
2	F	146	HIS	2.7
1	E	85	ASP	2.7

*Continued on next page...*

*Continued from previous page...*

Mol	Chain	Res	Type	RSRZ
2	J	40	ARG	2.7
1	C	46	PHE	2.7
1	I	48	LEU	2.7
2	L	142	ALA	2.7
1	E	92	ARG	2.6
2	L	91	LEU	2.6
1	E	60	LYS	2.5
1	C	20	HIS	2.5
2	L	96	LEU	2.5
1	K	121	VAL	2.5
2	L	141	LEU	2.5
1	I	89	HIS	2.5
2	D	85	PHE	2.5
1	A	8	THR	2.5
2	L	70	ALA	2.4
2	L	92	HIS	2.4
1	E	140	TYR	2.4
2	L	65	LYS	2.4
2	D	98	VAL	2.4
1	C	139	LYS	2.4
1	C	89	HIS	2.3
1	G	50	HIS	2.3
1	E	73	VAL	2.3
1	C	83	LEU	2.3
1	G	16	LYS	2.3
2	H	19	ASN	2.2
1	E	88	ALA	2.2
1	A	139	LYS	2.2
1	I	135	VAL	2.2
1	E	131	SER	2.2
2	B	59	LYS	2.2
1	C	24	TYR	2.2
2	D	143	HIS	2.2
2	D	29	GLY	2.2
1	E	89	HIS	2.2
2	L	63	HIS	2.1
1	K	14	TRP	2.1
2	D	65	LYS	2.1
1	I	86	LEU	2.1
1	K	85	ASP	2.1
2	L	87	THR	2.1
1	K	2	LEU	2.1

*Continued on next page...*

*Continued from previous page...*

Mol	Chain	Res	Type	RSRZ
2	D	79	ASP	2.1
1	I	45	HIS	2.1
1	I	51	GLY	2.1
1	E	79	ALA	2.1
2	L	56	GLY	2.0
2	D	3	LEU	2.0
2	L	69	GLY	2.0
2	H	67	VAL	2.0

## 6.2 Non-standard residues in protein, DNA, RNA chains ⓘ

There are no non-standard protein/DNA/RNA residues in this entry.

## 6.3 Carbohydrates ⓘ

There are no carbohydrates in this entry.

## 6.4 Ligands ⓘ

In the following table, the Atoms column lists the number of modelled atoms in the group and the number defined in the chemical component dictionary. The B-factors column lists the minimum, median, 95<sup>th</sup> percentile and maximum values of B factors of atoms in the group. The column labelled 'Q< 0.9' lists the number of atoms with occupancy less than 0.9.

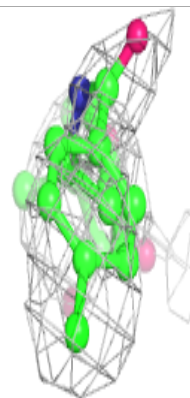
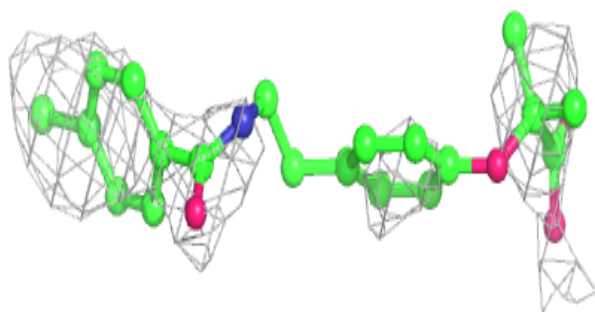
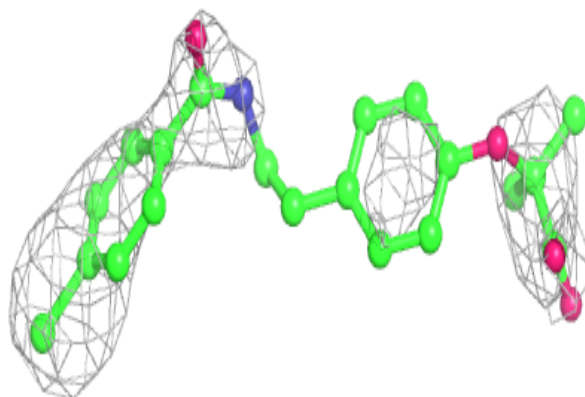
Mol	Type	Chain	Res	Atoms	RSCC	RSR	B-factors(Å <sup>2</sup> )	Q<0.9
5	PEM	I	202	25/25	0.72	0.37	117,125,127,127	0
3	HNI	L	201	43/43	0.89	0.23	99,102,111,114	0
3	HNI	I	201	43/43	0.94	0.23	80,83,92,93	0
3	HNI	H	201	43/43	0.95	0.20	75,77,84,86	0
4	HEM	B	201	43/43	0.95	0.18	61,64,74,76	0
3	HNI	E	201	43/43	0.96	0.19	79,82,90,93	0
3	HNI	D	201	43/43	0.96	0.19	73,76,85,87	0
4	HEM	C	201	43/43	0.96	0.18	61,63,71,73	0
4	HEM	G	201	43/43	0.96	0.18	61,64,73,74	0
4	HEM	J	201	43/43	0.96	0.19	56,62,72,74	0
4	HEM	K	201	43/43	0.96	0.19	68,72,82,84	0
3	HNI	A	201	43/43	0.97	0.17	68,70,77,78	0
4	HEM	F	201	43/43	0.97	0.18	47,50,59,61	0

The following is a graphical depiction of the model fit to experimental electron density of all

instances of the Ligand of Interest. In addition, ligands with molecular weight > 250 and outliers as shown on the geometry validation Tables will also be included. Each fit is shown from different orientation to approximate a three-dimensional view.

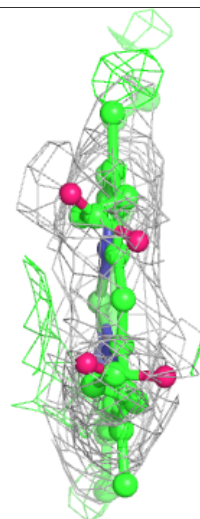
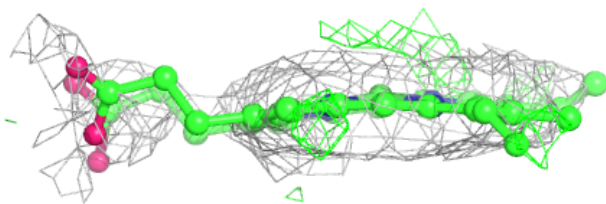
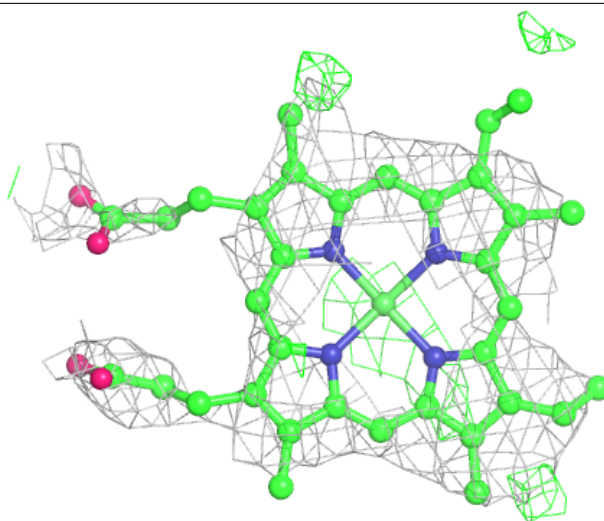
**Electron density around PEM I 202:**

$2mF_o-DF_c$  (at 0.7 rmsd) in gray  
 $mF_o-DF_c$  (at 3 rmsd) in purple (negative)  
and green (positive)



**Electron density around HNI L 201:**

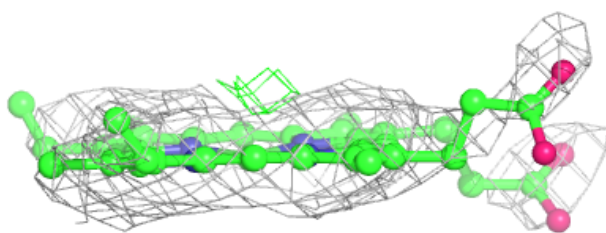
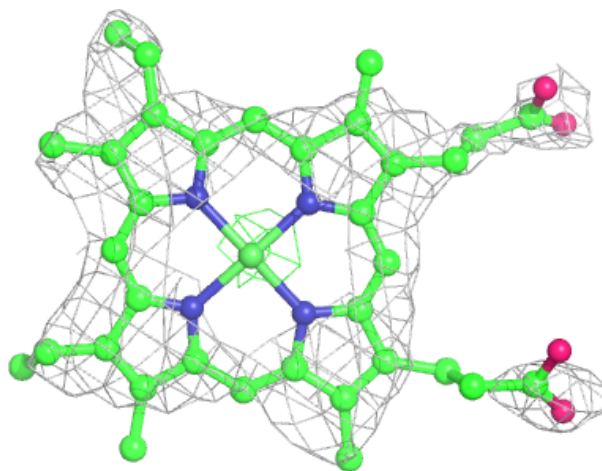
$2mF_o-DF_c$  (at 0.7 rmsd) in gray  
 $mF_o-DF_c$  (at 3 rmsd) in purple (negative)  
and green (positive)





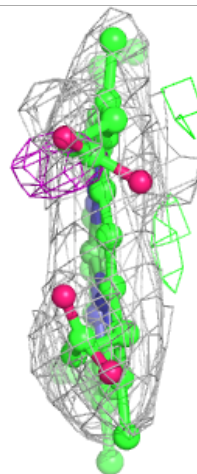
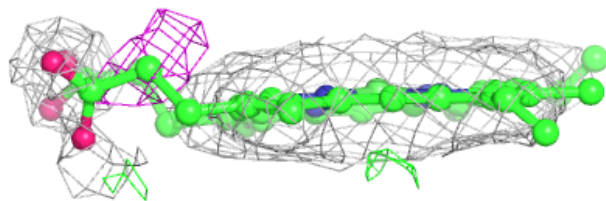
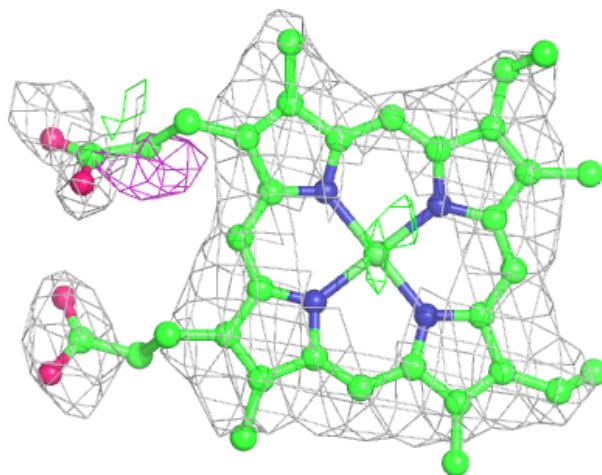
**Electron density around HNI I 201:**

$2mF_o-DF_c$  (at 0.7 rmsd) in gray  
 $mF_o-DF_c$  (at 3 rmsd) in purple (negative)  
and green (positive)



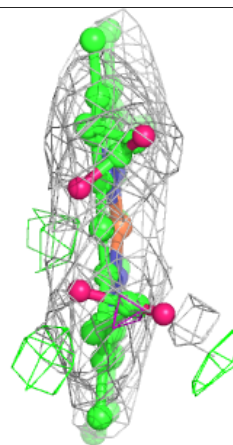
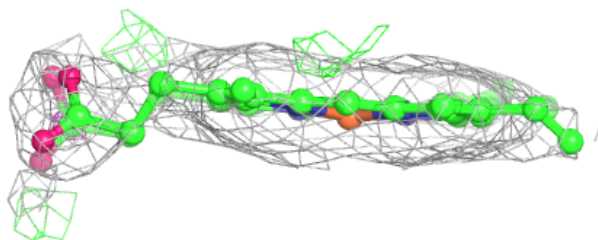
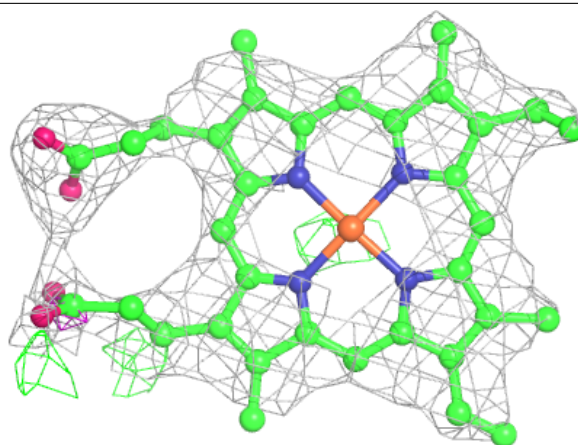
**Electron density around HNI H 201:**

$2mF_o-DF_c$  (at 0.7 rmsd) in gray  
 $mF_o-DF_c$  (at 3 rmsd) in purple (negative)  
and green (positive)



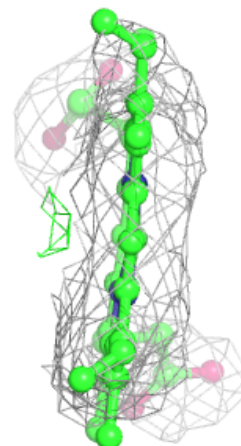
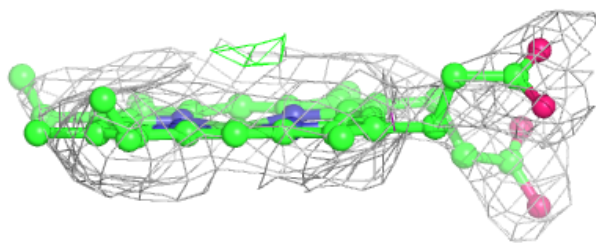
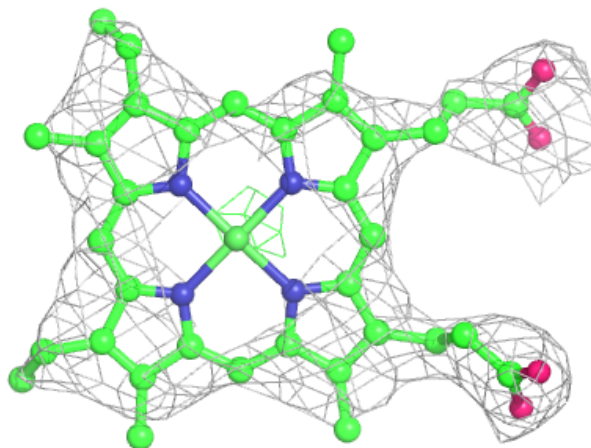
**Electron density around HEM B 201:**

$2mF_o - DF_c$  (at 0.7 rmsd) in gray  
 $mF_o - DF_c$  (at 3 rmsd) in purple (negative)  
and green (positive)



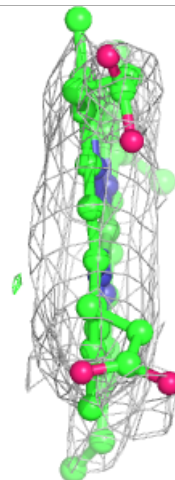
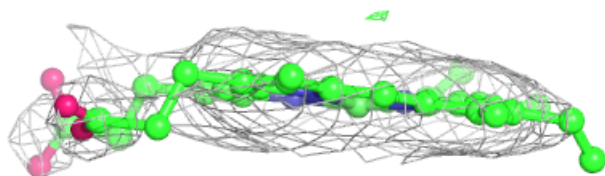
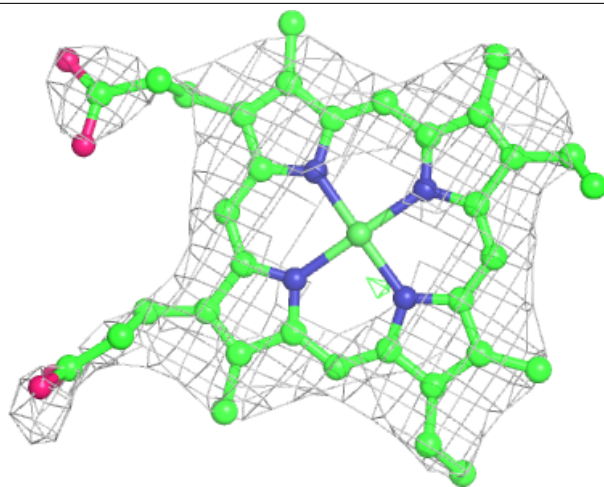
**Electron density around HNI E 201:**

$2mF_o-DF_c$  (at 0.7 rmsd) in gray  
 $mF_o-DF_c$  (at 3 rmsd) in purple (negative)  
and green (positive)



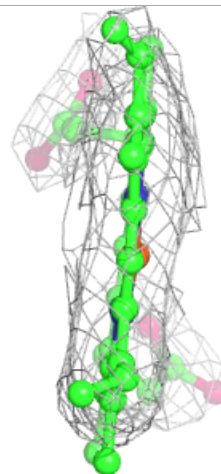
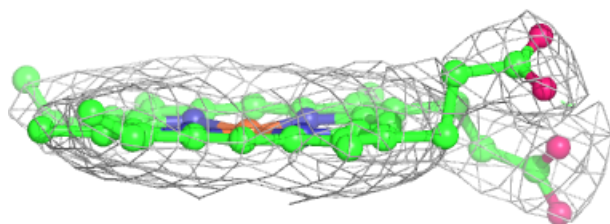
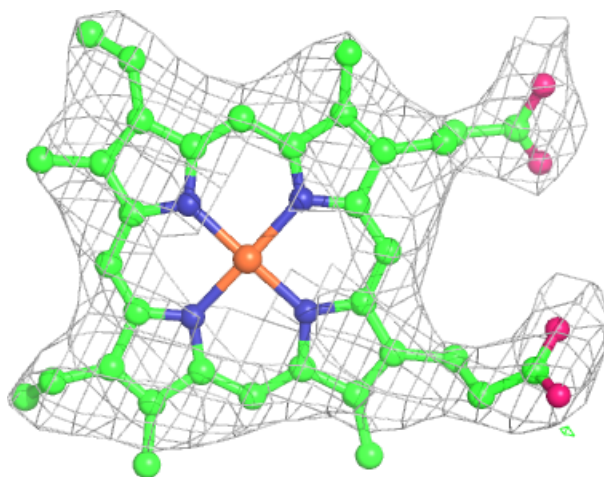
**Electron density around HNI D 201:**

$2mF_o-DF_c$  (at 0.7 rmsd) in gray  
 $mF_o-DF_c$  (at 3 rmsd) in purple (negative)  
and green (positive)



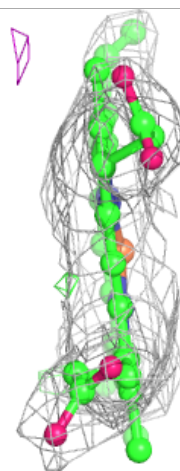
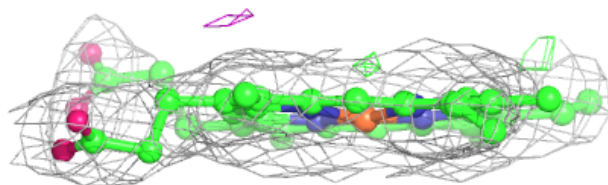
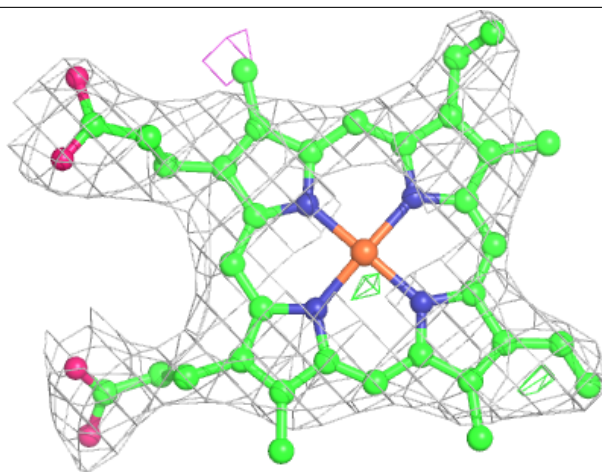
**Electron density around HEM C 201:**

$2mF_o-DF_c$  (at 0.7 rmsd) in gray  
 $mF_o-DF_c$  (at 3 rmsd) in purple (negative)  
and green (positive)



**Electron density around HEM G 201:**

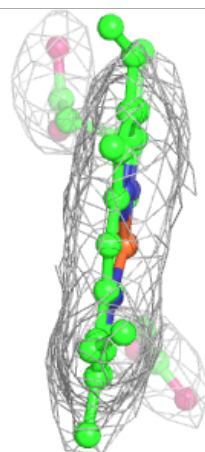
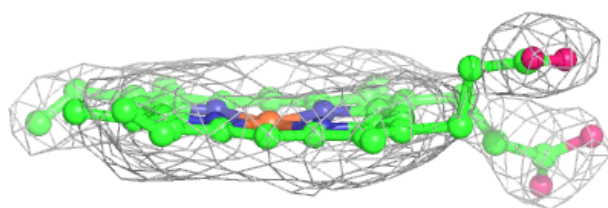
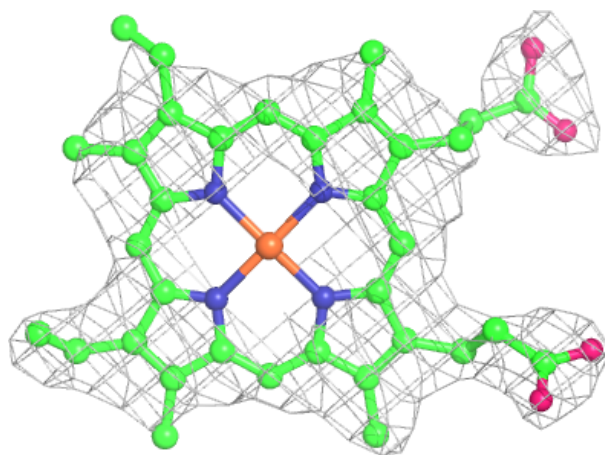
$2mF_o-DF_c$  (at 0.7 rmsd) in gray  
 $mF_o-DF_c$  (at 3 rmsd) in purple (negative)  
and green (positive)





**Electron density around HEM J 201:**

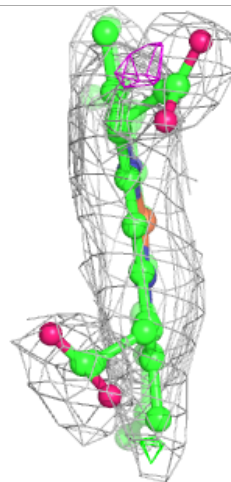
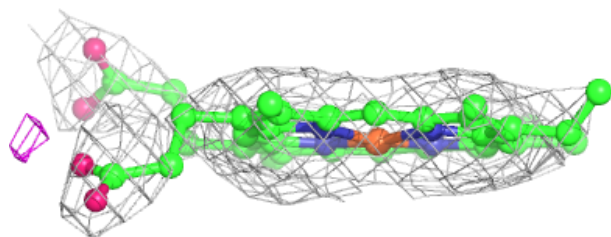
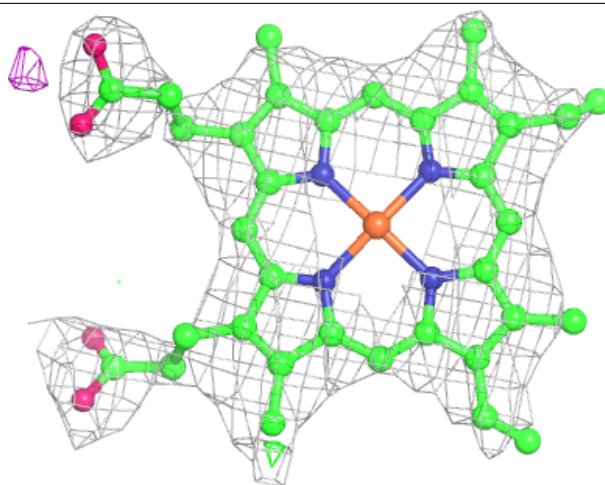
$2mF_o-DF_c$  (at 0.7 rmsd) in gray  
 $mF_o-DF_c$  (at 3 rmsd) in purple (negative)  
and green (positive)





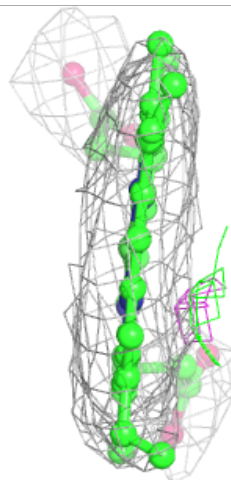
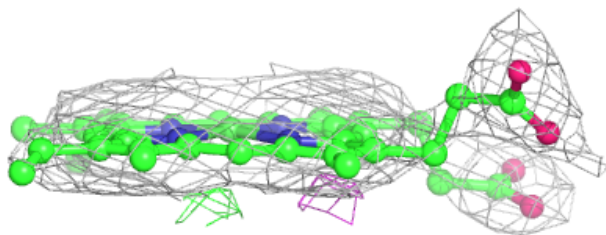
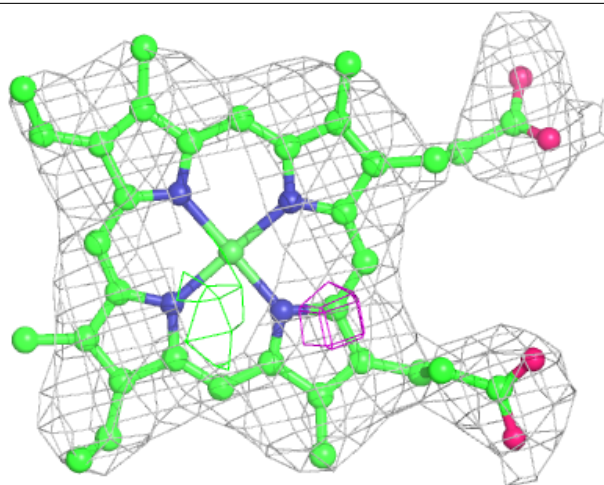
**Electron density around HEM K 201:**

$2mF_o-DF_c$  (at 0.7 rmsd) in gray  
 $mF_o-DF_c$  (at 3 rmsd) in purple (negative)  
and green (positive)



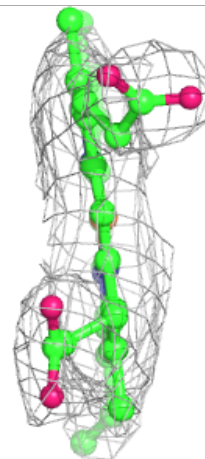
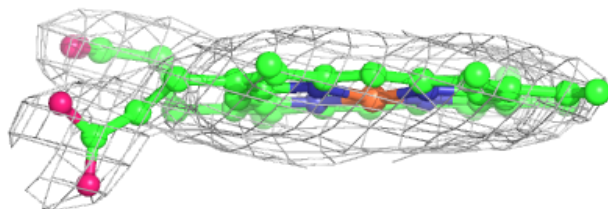
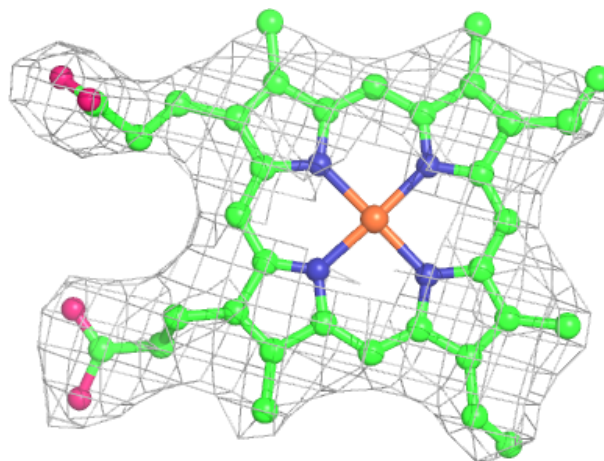
**Electron density around HNI A 201:**

$2mF_o-DF_c$  (at 0.7 rmsd) in gray  
 $mF_o-DF_c$  (at 3 rmsd) in purple (negative)  
and green (positive)



**Electron density around HEM F 201:**

$2mF_o-DF_c$  (at 0.7 rmsd) in gray  
 $mF_o-DF_c$  (at 3 rmsd) in purple (negative)  
and green (positive)



## 6.5 Other polymers [i](#)

There are no such residues in this entry.