



wwPDB X-ray Structure Validation Summary Report ⓘ

Nov 17, 2021 – 12:07 PM EST

PDB ID : 6X6Y
Title : Crystal structure of acetyltransferase Eis from Mycobacterium tuberculosis in complex with inhibitor SGT1264
Authors : Punetha, A.; Garneau-Tsodikova, S.; Tsodikov, O.V.
Deposited on : 2020-05-29
Resolution : 2.50 Å(reported)

This is a wwPDB X-ray Structure Validation Summary Report for a publicly released PDB entry.

We welcome your comments at validation@mail.wwpdb.org

A user guide is available at

<https://www.wwpdb.org/validation/2017/XrayValidationReportHelp>

with specific help available everywhere you see the ⓘ symbol.

The following versions of software and data (see [references ⓘ](#)) were used in the production of this report:

MolProbity : 4.02b-467
Mogul : 1.8.5 (274361), CSD as541be (2020)
Xtriage (Phenix) : 1.13
EDS : 2.23.2
buster-report : 1.1.7 (2018)
Percentile statistics : 20191225.v01 (using entries in the PDB archive December 25th 2019)
Refmac : 5.8.0158
CCP4 : 7.0.044 (Gargrove)
Ideal geometry (proteins) : Engh & Huber (2001)
Ideal geometry (DNA, RNA) : Parkinson et al. (1996)
Validation Pipeline (wwPDB-VP) : 2.23.2

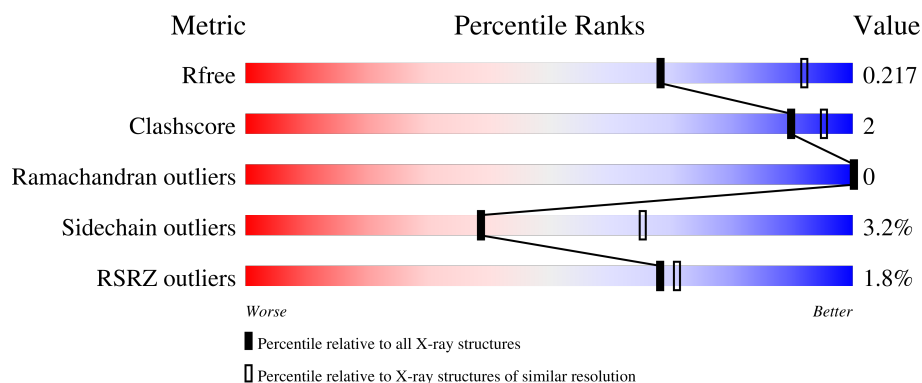
1 Overall quality at a glance

The following experimental techniques were used to determine the structure:

X-RAY DIFFRACTION


The reported resolution of this entry is 2.50 Å.

Percentile scores (ranging between 0-100) for global validation metrics of the entry are shown in the following graphic. The table shows the number of entries on which the scores are based.



Metric	Whole archive (#Entries)	Similar resolution (#Entries, resolution range(Å))
R_{free}	130704	4661 (2.50-2.50)
Clashscore	141614	5346 (2.50-2.50)
Ramachandran outliers	138981	5231 (2.50-2.50)
Sidechain outliers	138945	5233 (2.50-2.50)
RSRZ outliers	127900	4559 (2.50-2.50)

The table below summarises the geometric issues observed across the polymeric chains and their fit to the electron density. The red, orange, yellow and green segments of the lower bar indicate the fraction of residues that contain outliers for ≥ 3 , 2, 1 and 0 types of geometric quality criteria respectively. A grey segment represents the fraction of residues that are not modelled. The numeric value for each fraction is indicated below the corresponding segment, with a dot representing fractions $\leq 5\%$. The upper red bar (where present) indicates the fraction of residues that have poor fit to the electron density. The numeric value is given above the bar.

Mol	Chain	Length	Quality of chain
1	AAA	422	

2 Entry composition

There are 7 unique types of molecules in this entry. The entry contains 3334 atoms, of which 0 are hydrogens and 0 are deuteriums.

In the tables below, the ZeroOcc column contains the number of atoms modelled with zero occupancy, the AltConf column contains the number of residues with at least one atom in alternate conformation and the Trace column contains the number of residues modelled with at most 2 atoms.

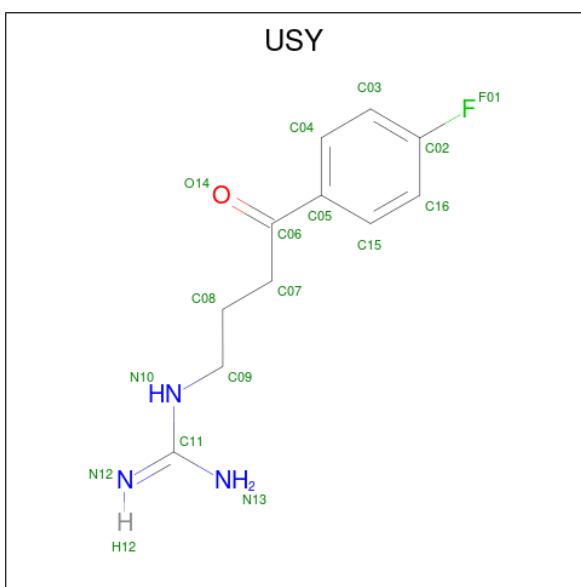
- Molecule 1 is a protein called N-acetyltransferase Eis.

Mol	Chain	Residues	Atoms					ZeroOcc	AltConf	Trace
1	AAA	394	Total	C	N	O	S	0	1	2
			3036	1908	561	556	11			

There are 21 discrepancies between the modelled and reference sequences:

Chain	Residue	Modelled	Actual	Comment	Reference
AAA	-19	MET	-	expression tag	UNP P9WFK7
AAA	-18	GLY	-	expression tag	UNP P9WFK7
AAA	-17	SER	-	expression tag	UNP P9WFK7
AAA	-16	SER	-	expression tag	UNP P9WFK7
AAA	-15	HIS	-	expression tag	UNP P9WFK7
AAA	-14	HIS	-	expression tag	UNP P9WFK7
AAA	-13	HIS	-	expression tag	UNP P9WFK7
AAA	-12	HIS	-	expression tag	UNP P9WFK7
AAA	-11	HIS	-	expression tag	UNP P9WFK7
AAA	-10	HIS	-	expression tag	UNP P9WFK7
AAA	-9	SER	-	expression tag	UNP P9WFK7
AAA	-8	SER	-	expression tag	UNP P9WFK7
AAA	-7	GLY	-	expression tag	UNP P9WFK7
AAA	-6	LEU	-	expression tag	UNP P9WFK7
AAA	-5	VAL	-	expression tag	UNP P9WFK7
AAA	-4	PRO	-	expression tag	UNP P9WFK7
AAA	-3	ARG	-	expression tag	UNP P9WFK7
AAA	-2	GLY	-	expression tag	UNP P9WFK7
AAA	-1	SER	-	expression tag	UNP P9WFK7
AAA	0	HIS	-	expression tag	UNP P9WFK7
AAA	204	ALA	CYS	engineered mutation	UNP P9WFK7

- Molecule 2 is N-[4-(4-fluorophenyl)-4-oxobutyl]guanidine (three-letter code: USY) (formula: $C_{11}H_{14}FN_3O$) (labeled as "Ligand of Interest" by depositor).



Mol	Chain	Residues	Atoms					ZeroOcc	AltConf
2	AAA	1	Total	C	F	N	O	0	0
			16	11	1	3	1		

- Molecule 3 is GLYCEROL (three-letter code: GOL) (formula: $C_3H_8O_3$).



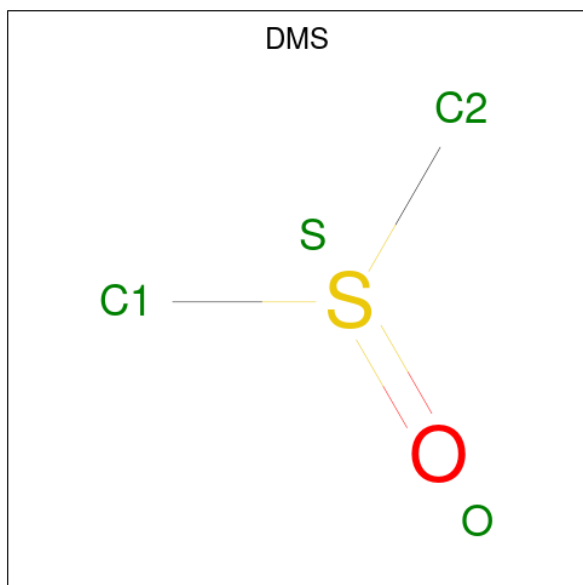
Mol	Chain	Residues	Atoms			ZeroOcc	AltConf
3	AAA	1	Total	C	O	0	0
			6	3	3		
3	AAA	1	Total	C	O	0	0
			6	3	3		
3	AAA	1	Total	C	O	0	0
			6	3	3		

Continued on next page...

Continued from previous page...

Mol	Chain	Residues	Atoms			ZeroOcc	AltConf
3	AAA	1	Total	C	O	0	0
			6	3	3		
3	AAA	1	Total	C	O	0	0
			6	3	3		
3	AAA	1	Total	C	O	0	0
			6	3	3		

- Molecule 4 is DIMETHYL SULFOXIDE (three-letter code: DMS) (formula: C_2H_6OS).



Mol	Chain	Residues	Atoms				ZeroOcc	AltConf
4	AAA	1	Total	C	O	S	0	0
			4	2	1	1		
4	AAA	1	Total	C	O	S	0	0
			4	2	1	1		

- Molecule 5 is DI(HYDROXYETHYL)ETHER (three-letter code: PEG) (formula: $C_4H_{10}O_3$).



Mol	Chain	Residues	Atoms			ZeroOcc	AltConf
5	AAA	1	Total	C	O	0	0
			7	4	3		

- Molecule 6 is CHLORIDE ION (three-letter code: CL) (formula: Cl).

Mol	Chain	Residues	Atoms		ZeroOcc	AltConf
6	AAA	1	Total	Cl	0	0
			1	1		

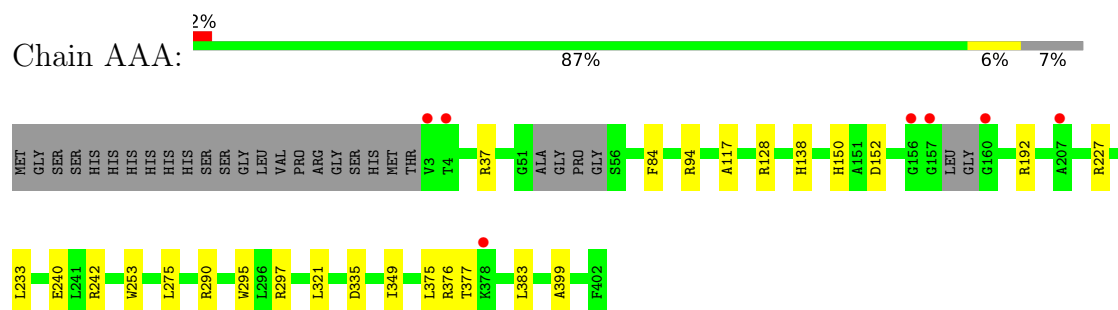
- Molecule 7 is water.

Mol	Chain	Residues	Atoms		ZeroOcc	AltConf
7	AAA	230	Total	O	0	0
			230	230		

3 Residue-property plots [i](#)

These plots are drawn for all protein, RNA, DNA and oligosaccharide chains in the entry. The first graphic for a chain summarises the proportions of the various outlier classes displayed in the second graphic. The second graphic shows the sequence view annotated by issues in geometry and electron density. Residues are color-coded according to the number of geometric quality criteria for which they contain at least one outlier: green = 0, yellow = 1, orange = 2 and red = 3 or more. A red dot above a residue indicates a poor fit to the electron density ($RSRZ > 2$). Stretches of 2 or more consecutive residues without any outlier are shown as a green connector. Residues present in the sample, but not in the model, are shown in grey.

- Molecule 1: N-acetyltransferase Eis



4 Data and refinement statistics

Property	Value	Source
Space group	H 3 2	Depositor
Cell constants a, b, c, α , β , γ	175.48Å 175.48Å 124.81Å 90.00° 90.00° 120.00°	Depositor
Resolution (Å)	39.97 – 2.50 39.93 – 2.49	Depositor EDS
% Data completeness (in resolution range)	99.4 (39.97-2.50) 99.5 (39.93-2.49)	Depositor EDS
R_{merge}	0.10	Depositor
R_{sym}	(Not available)	Depositor
$\langle I/\sigma(I) \rangle$ ¹	3.36 (at 2.48Å)	Xtriage
Refinement program	REFMAC 5.8.0258	Depositor
R, R_{free}	0.174 , 0.213 0.179 , 0.217	Depositor DCC
R_{free} test set	1312 reflections (5.07%)	wwPDB-VP
Wilson B-factor (Å ²)	34.5	Xtriage
Anisotropy	0.685	Xtriage
Bulk solvent k_{sol} (e/Å ³), B_{sol} (Å ²)	0.35 , 34.4	EDS
L-test for twinning ²	$\langle L \rangle = 0.49$, $\langle L^2 \rangle = 0.32$	Xtriage
Estimated twinning fraction	No twinning to report.	Xtriage
F_o, F_c correlation	0.95	EDS
Total number of atoms	3334	wwPDB-VP
Average B, all atoms (Å ²)	38.0	wwPDB-VP

Xtriage's analysis on translational NCS is as follows: *The largest off-origin peak in the Patterson function is 3.85% of the height of the origin peak. No significant pseudotranslation is detected.*

¹Intensities estimated from amplitudes.

²Theoretical values of $\langle |L| \rangle$, $\langle L^2 \rangle$ for acentric reflections are 0.5, 0.333 respectively for untwinned datasets, and 0.375, 0.2 for perfectly twinned datasets.

5 Model quality

5.1 Standard geometry

Bond lengths and bond angles in the following residue types are not validated in this section: CL, USY, PEG, GOL, DMS

The Z score for a bond length (or angle) is the number of standard deviations the observed value is removed from the expected value. A bond length (or angle) with $|Z| > 5$ is considered an outlier worth inspection. RMSZ is the root-mean-square of all Z scores of the bond lengths (or angles).

Mol	Chain	Bond lengths		Bond angles	
		RMSZ	$\# Z > 5$	RMSZ	$\# Z > 5$
1	AAA	0.63	0/3110	0.77	0/4228

There are no bond length outliers.

There are no bond angle outliers.

There are no chirality outliers.

There are no planarity outliers.

5.2 Too-close contacts

In the following table, the Non-H and H(model) columns list the number of non-hydrogen atoms and hydrogen atoms in the chain respectively. The H(added) column lists the number of hydrogen atoms added and optimized by MolProbity. The Clashes column lists the number of clashes within the asymmetric unit, whereas Symm-Clashes lists symmetry-related clashes.

Mol	Chain	Non-H	H(model)	H(added)	Clashes	Symm-Clashes
1	AAA	3036	0	2998	11	0
2	AAA	16	0	0	0	0
3	AAA	36	0	48	1	0
4	AAA	8	0	12	0	0
5	AAA	7	0	10	0	0
6	AAA	1	0	0	0	0
7	AAA	230	0	0	0	0
All	All	3334	0	3068	11	0

The all-atom clashscore is defined as the number of clashes found per 1000 atoms (including hydrogen atoms). The all-atom clashscore for this structure is 2.

The worst 5 of 11 close contacts within the same asymmetric unit are listed below, sorted by their clash magnitude.

Atom-1	Atom-2	Interatomic distance (Å)	Clash overlap (Å)
1:AAA:297:ARG:HH12	3:AAA:502:GOL:H11	1.57	0.68
1:AAA:192:ARG:NH2	1:AAA:240:GLU:OE1	2.36	0.55
1:AAA:349:ILE:HD11	1:AAA:375:LEU:HD21	1.92	0.51
1:AAA:242:ARG:NH2	1:AAA:399:ALA:O	2.46	0.49
1:AAA:321:LEU:HA	1:AAA:349:ILE:HG23	1.97	0.47

There are no symmetry-related clashes.

5.3 Torsion angles [i](#)

5.3.1 Protein backbone [i](#)

In the following table, the Percentiles column shows the percent Ramachandran outliers of the chain as a percentile score with respect to all X-ray entries followed by that with respect to entries of similar resolution.

The Analysed column shows the number of residues for which the backbone conformation was analysed, and the total number of residues.

Mol	Chain	Analysed	Favoured	Allowed	Outliers	Percentiles	
1	AAA	389/422 (92%)	381 (98%)	8 (2%)	0	100	100

There are no Ramachandran outliers to report.

5.3.2 Protein sidechains [i](#)

In the following table, the Percentiles column shows the percent sidechain outliers of the chain as a percentile score with respect to all X-ray entries followed by that with respect to entries of similar resolution.

The Analysed column shows the number of residues for which the sidechain conformation was analysed, and the total number of residues.

Mol	Chain	Analysed	Rotameric	Outliers	Percentiles	
1	AAA	309/329 (94%)	299 (97%)	10 (3%)	39	65

5 of 10 residues with a non-rotameric sidechain are listed below:

Mol	Chain	Res	Type
1	AAA	290	ARG
1	AAA	335	ASP

Continued on next page...

Continued from previous page...

Mol	Chain	Res	Type
1	AAA	376	ARG
1	AAA	128	ARG
1	AAA	138	HIS

Sometimes sidechains can be flipped to improve hydrogen bonding and reduce clashes. There are no such sidechains identified.

5.3.3 RNA [i](#)

There are no RNA molecules in this entry.

5.4 Non-standard residues in protein, DNA, RNA chains [i](#)

There are no non-standard protein/DNA/RNA residues in this entry.

5.5 Carbohydrates [i](#)

There are no monosaccharides in this entry.

5.6 Ligand geometry [i](#)

Of 11 ligands modelled in this entry, 1 is monoatomic - leaving 10 for Mogul analysis.

In the following table, the Counts columns list the number of bonds (or angles) for which Mogul statistics could be retrieved, the number of bonds (or angles) that are observed in the model and the number of bonds (or angles) that are defined in the Chemical Component Dictionary. The Link column lists molecule types, if any, to which the group is linked. The Z score for a bond length (or angle) is the number of standard deviations the observed value is removed from the expected value. A bond length (or angle) with $|Z| > 2$ is considered an outlier worth inspection. RMSZ is the root-mean-square of all Z scores of the bond lengths (or angles).

Mol	Type	Chain	Res	Link	Bond lengths			Bond angles		
					Counts	RMSZ	$\# Z > 2$	Counts	RMSZ	$\# Z > 2$
5	PEG	AAA	506	-	6,6,6	0.23	0	5,5,5	0.21	0
4	DMS	AAA	503	-	3,3,3	0.26	0	3,3,3	0.08	0
4	DMS	AAA	504	-	3,3,3	0.22	0	3,3,3	0.06	0
3	GOL	AAA	507	-	5,5,5	0.12	0	5,5,5	0.27	0
3	GOL	AAA	508	-	5,5,5	0.17	0	5,5,5	0.43	0
2	USY	AAA	501	-	16,16,16	1.94	4 (25%)	19,20,20	1.33	3 (15%)
3	GOL	AAA	510	-	5,5,5	0.14	0	5,5,5	0.39	0

Mol	Type	Chain	Res	Link	Bond lengths			Bond angles		
					Counts	RMSZ	# Z > 2	Counts	RMSZ	# Z > 2
3	GOL	AAA	509	-	5,5,5	0.11	0	5,5,5	0.25	0
3	GOL	AAA	505	-	5,5,5	0.14	0	5,5,5	0.35	0
3	GOL	AAA	502	-	5,5,5	0.11	0	5,5,5	0.34	0

In the following table, the Chirals column lists the number of chiral outliers, the number of chiral centers analysed, the number of these observed in the model and the number defined in the Chemical Component Dictionary. Similar counts are reported in the Torsion and Rings columns. '-' means no outliers of that kind were identified.

Mol	Type	Chain	Res	Link	Chirals	Torsions	Rings
5	PEG	AAA	506	-	-	2/4/4/4	-
3	GOL	AAA	507	-	-	2/4/4/4	-
3	GOL	AAA	508	-	-	2/4/4/4	-
2	USY	AAA	501	-	-	3/11/11/11	0/1/1/1
3	GOL	AAA	510	-	-	4/4/4/4	-
3	GOL	AAA	509	-	-	1/4/4/4	-
3	GOL	AAA	505	-	-	2/4/4/4	-
3	GOL	AAA	502	-	-	4/4/4/4	-

All (4) bond length outliers are listed below:

Mol	Chain	Res	Type	Atoms	Z	Observed(Å)	Ideal(Å)
2	AAA	501	USY	C11-N10	5.72	1.44	1.33
2	AAA	501	USY	C11-N12	3.19	1.45	1.32
2	AAA	501	USY	O14-C06	-2.62	1.18	1.22
2	AAA	501	USY	C11-N13	-2.15	1.26	1.34

All (3) bond angle outliers are listed below:

Mol	Chain	Res	Type	Atoms	Z	Observed(°)	Ideal(°)
2	AAA	501	USY	C08-C07-C06	-2.67	108.70	113.62
2	AAA	501	USY	C04-C05-C15	2.18	121.69	118.59
2	AAA	501	USY	C07-C06-C05	2.06	121.99	119.13

There are no chirality outliers.

5 of 20 torsion outliers are listed below:

Mol	Chain	Res	Type	Atoms
3	AAA	502	GOL	C1-C2-C3-O3
3	AAA	505	GOL	C1-C2-C3-O3

Continued on next page...

Continued from previous page...

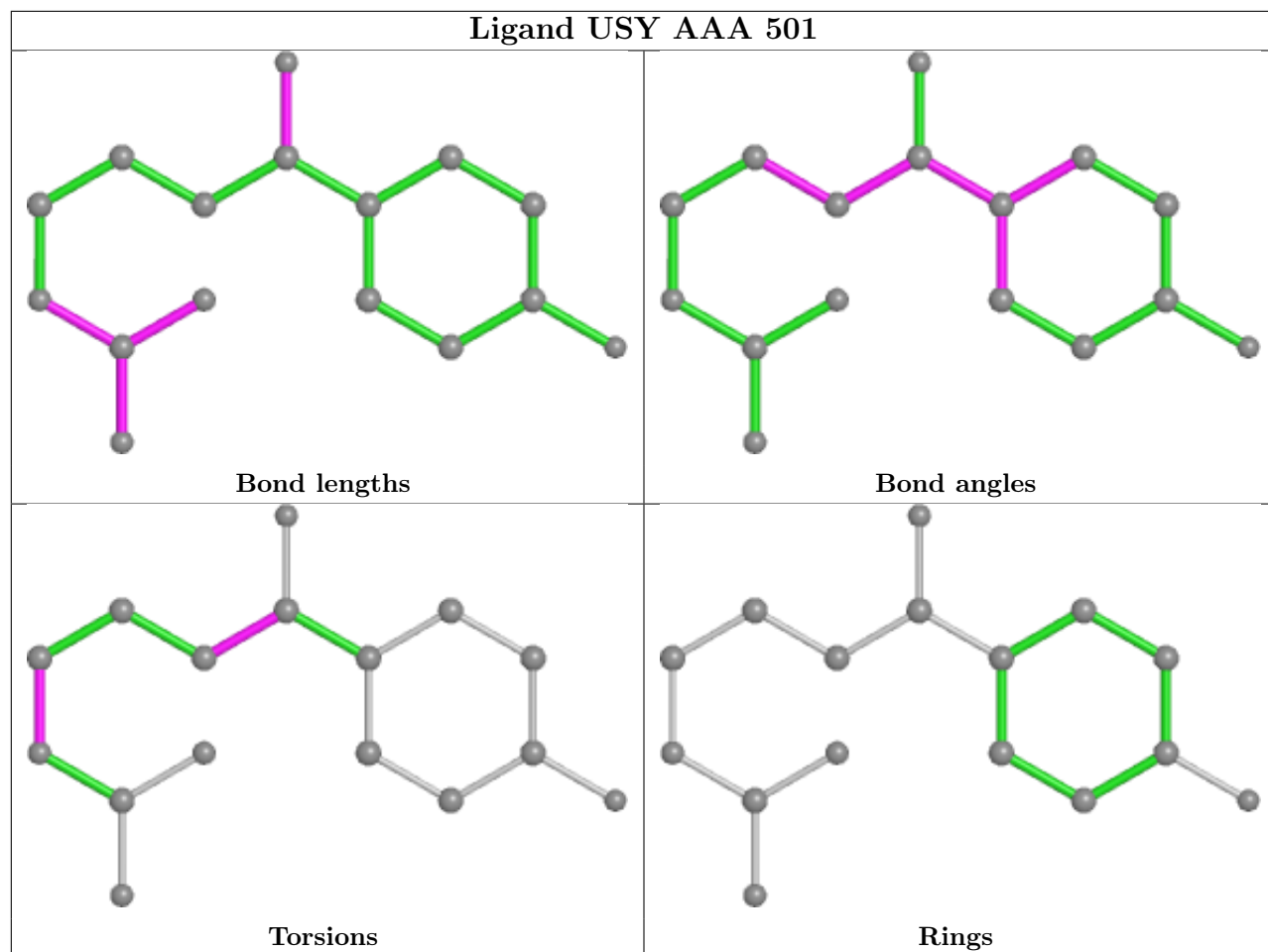
Mol	Chain	Res	Type	Atoms
3	AAA	508	GOL	O1-C1-C2-C3
3	AAA	510	GOL	O1-C1-C2-O2
3	AAA	510	GOL	O1-C1-C2-C3

There are no ring outliers.

1 monomer is involved in 1 short contact:

Mol	Chain	Res	Type	Clashes	Symm-Clashes
3	AAA	502	GOL	1	0

The following is a two-dimensional graphical depiction of Mogul quality analysis of bond lengths, bond angles, torsion angles, and ring geometry for all instances of the Ligand of Interest. In addition, ligands with molecular weight > 250 and outliers as shown on the validation Tables will also be included. For torsion angles, if less than 5% of the Mogul distribution of torsion angles is within 10 degrees of the torsion angle in question, then that torsion angle is considered an outlier. Any bond that is central to one or more torsion angles identified as an outlier by Mogul will be highlighted in the graph. For rings, the root-mean-square deviation (RMSD) between the ring in question and similar rings identified by Mogul is calculated over all ring torsion angles. If the average RMSD is greater than 60 degrees and the minimal RMSD between the ring in question and any Mogul-identified rings is also greater than 60 degrees, then that ring is considered an outlier. The outliers are highlighted in purple. The color gray indicates Mogul did not find sufficient equivalents in the CSD to analyse the geometry.



5.7 Other polymers [i](#)

There are no such residues in this entry.

5.8 Polymer linkage issues [i](#)

There are no chain breaks in this entry.

6 Fit of model and data [i](#)

6.1 Protein, DNA and RNA chains [i](#)

In the following table, the column labelled ‘#RSRZ > 2’ contains the number (and percentage) of RSRZ outliers, followed by percent RSRZ outliers for the chain as percentile scores relative to all X-ray entries and entries of similar resolution. The OWAB column contains the minimum, median, 95th percentile and maximum values of the occupancy-weighted average B-factor per residue. The column labelled ‘Q < 0.9’ lists the number of (and percentage) of residues with an average occupancy less than 0.9.

Mol	Chain	Analysed	<RSRZ>	#RSRZ>2	OWAB(Å ²)	Q<0.9
1	AAA	394/422 (93%)	-0.44	7 (1%) 68 71	23, 34, 64, 82	0

The worst 5 of 7 RSRZ outliers are listed below:

Mol	Chain	Res	Type	RSRZ
1	AAA	156	GLY	3.1
1	AAA	160	GLY	3.0
1	AAA	3	VAL	2.7
1	AAA	4	THR	2.4
1	AAA	207	ALA	2.1

6.2 Non-standard residues in protein, DNA, RNA chains [i](#)

There are no non-standard protein/DNA/RNA residues in this entry.

6.3 Carbohydrates [i](#)

There are no monosaccharides in this entry.

6.4 Ligands [i](#)

In the following table, the Atoms column lists the number of modelled atoms in the group and the number defined in the chemical component dictionary. The B-factors column lists the minimum, median, 95th percentile and maximum values of B factors of atoms in the group. The column labelled ‘Q < 0.9’ lists the number of atoms with occupancy less than 0.9.

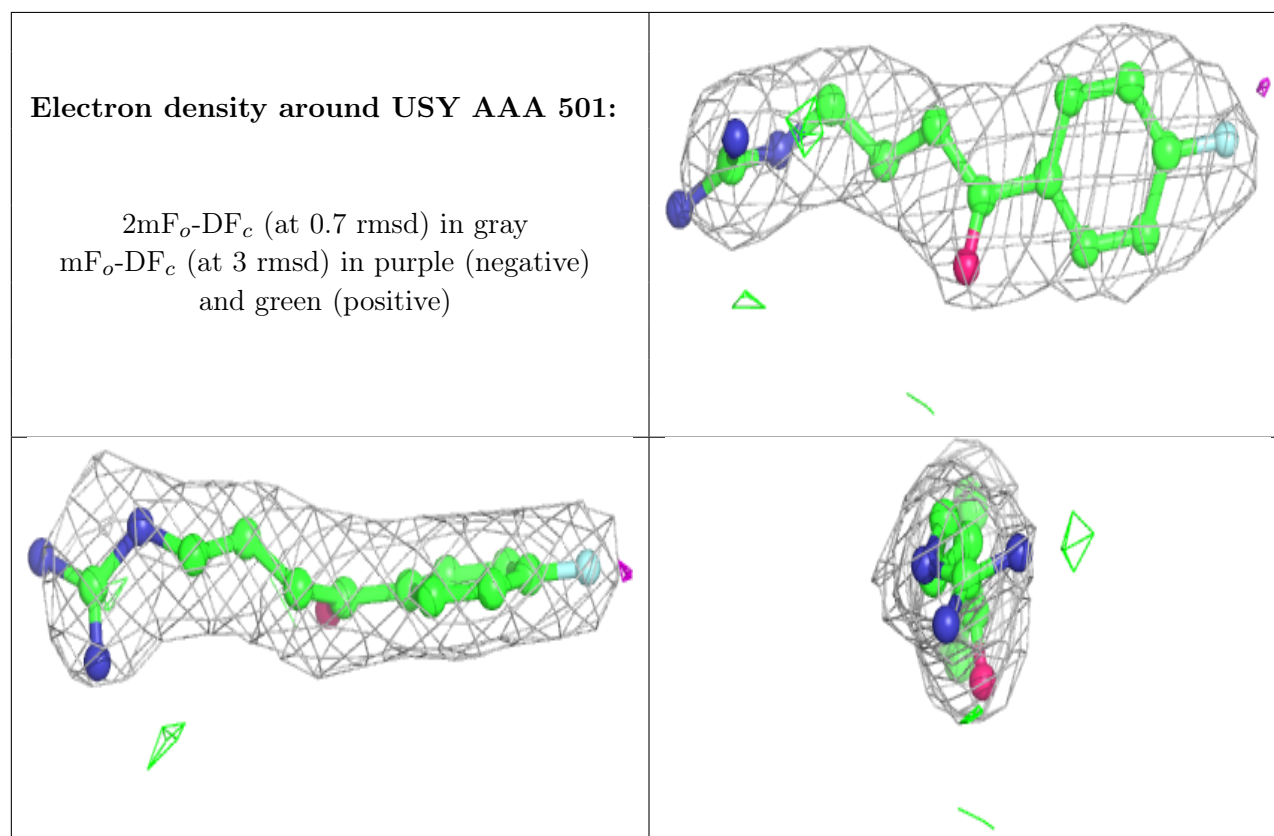
Mol	Type	Chain	Res	Atoms	RSCC	RSR	B-factors(Å ²)	Q<0.9
5	PEG	AAA	506	7/7	0.77	0.36	63,71,75,78	0
3	GOL	AAA	508	6/6	0.80	0.19	60,64,65,67	0

Continued on next page...

Continued from previous page...

Mol	Type	Chain	Res	Atoms	RSCC	RSR	B-factors(\AA^2)	Q<0.9
3	GOL	AAA	510	6/6	0.83	0.15	40,42,42,43	0
3	GOL	AAA	507	6/6	0.84	0.28	77,78,79,79	0
3	GOL	AAA	502	6/6	0.87	0.19	59,63,66,70	0
3	GOL	AAA	505	6/6	0.89	0.20	63,64,69,73	0
4	DMS	AAA	504	4/4	0.90	0.18	88,90,90,94	0
4	DMS	AAA	503	4/4	0.91	0.22	91,91,94,96	0
3	GOL	AAA	509	6/6	0.93	0.17	47,48,49,50	0
2	USY	AAA	501	16/16	0.94	0.14	33,38,57,61	0
6	CL	AAA	511	1/1	0.96	0.23	49,49,49,49	0

The following is a graphical depiction of the model fit to experimental electron density of all instances of the Ligand of Interest. In addition, ligands with molecular weight > 250 and outliers as shown on the geometry validation Tables will also be included. Each fit is shown from different orientation to approximate a three-dimensional view.



6.5 Other polymers ⓘ

There are no such residues in this entry.