



wwPDB X-ray Structure Validation Summary Report ⓘ

May 26, 2020 – 08:43 am BST

PDB ID : 4XBG
Title : Crystal structure of human 4E10 Fab in complex with phosphatidic acid (06:0 PA): 2.73 Å resolution
Authors : Irimia, A.; Stanfield, R.L.; Wilson, I.A.
Deposited on : 2014-12-16
Resolution : 2.73 Å(reported)

This is a wwPDB X-ray Structure Validation Summary Report for a publicly released PDB entry.

We welcome your comments at validation@mail.wwpdb.org

A user guide is available at

<https://www.wwpdb.org/validation/2017/XrayValidationReportHelp>

with specific help available everywhere you see the ⓘ symbol.

The following versions of software and data (see [references ⓘ](#)) were used in the production of this report:

MolProbity : 4.02b-467
Mogul : 1.8.5 (274361), CSD as541be (2020)
Xtriage (Phenix) : 1.13
EDS : 2.11
buster-report : 1.1.7 (2018)
Percentile statistics : 20191225.v01 (using entries in the PDB archive December 25th 2019)
Refmac : 5.8.0158
CCP4 : 7.0.044 (Gargrove)
Ideal geometry (proteins) : Engh & Huber (2001)
Ideal geometry (DNA, RNA) : Parkinson et al. (1996)
Validation Pipeline (wwPDB-VP) : 2.11

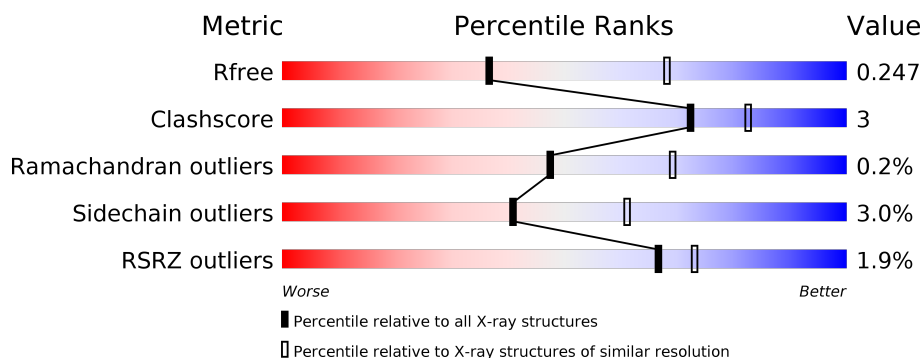
1 Overall quality at a glance

The following experimental techniques were used to determine the structure:

X-RAY DIFFRACTION

The reported resolution of this entry is 2.73 Å.

Percentile scores (ranging between 0-100) for global validation metrics of the entry are shown in the following graphic. The table shows the number of entries on which the scores are based.



Metric	Whole archive (#Entries)	Similar resolution (#Entries, resolution range(Å))
R_{free}	130704	1271 (2.76-2.72)
Clashscore	141614	1322 (2.76-2.72)
Ramachandran outliers	138981	1297 (2.76-2.72)
Sidechain outliers	138945	1298 (2.76-2.72)
RSRZ outliers	127900	1243 (2.76-2.72)

The table below summarises the geometric issues observed across the polymeric chains and their fit to the electron density. The red, orange, yellow and green segments on the lower bar indicate the fraction of residues that contain outliers for ≥ 3 , 2, 1 and 0 types of geometric quality criteria respectively. A grey segment represents the fraction of residues that are not modelled. The numeric value for each fraction is indicated below the corresponding segment, with a dot representing fractions $\leq 5\%$. The upper red bar (where present) indicates the fraction of residues that have poor fit to the electron density. The numeric value is given above the bar.

Mol	Chain	Length	Quality of chain
1	B	215	<div><div></div><div>89%10%</div></div>
1	D	215	<div><div></div><div>88%11%</div></div>
1	F	215	<div><div>5%</div><div>84%13%</div></div>
1	I	215	<div><div>2%</div><div>87%12%</div></div>
1	K	215	<div><div>4%</div><div>88%9%</div></div>
1	L	215	<div><div>%</div><div>93%6%</div></div>

Continued on next page...

Continued from previous page...

Mol	Chain	Length	Quality of chain
2	A	230	<div><div><div>%</div><div></div><div>86%</div><div>12%</div><div></div></div></div>
2	C	230	<div><div><div>2%</div><div></div><div>89%</div><div>9%</div><div></div></div></div>
2	E	230	<div><div><div>%</div><div></div><div>86%</div><div>8%</div><div>5%</div></div></div>
2	G	230	<div><div><div>%</div><div></div><div>85%</div><div>9%</div><div>5%</div></div></div>
2	H	230	<div><div><div>%</div><div></div><div>93%</div><div>7%</div><div></div></div></div>
2	J	230	<div><div><div>4%</div><div></div><div>84%</div><div>10%</div><div>6%</div></div></div>

2 Entry composition

There are 7 unique types of molecules in this entry. The entry contains 20282 atoms, of which 0 are hydrogens and 0 are deuteriums.

In the tables below, the ZeroOcc column contains the number of atoms modelled with zero occupancy, the AltConf column contains the number of residues with at least one atom in alternate conformation and the Trace column contains the number of residues modelled with at most 2 atoms.

- Molecule 1 is a protein called 4E10 Fab light chain.

Mol	Chain	Residues	Atoms					ZeroOcc	AltConf	Trace
1	L	214	Total	C	N	O	S	0	3	0
			1648	1022	285	336	5			
1	B	214	Total	C	N	O	S	0	3	0
			1659	1030	287	337	5			
1	D	214	Total	C	N	O	S	0	5	0
			1671	1035	292	339	5			
1	F	212	Total	C	N	O	S	0	1	0
			1600	990	279	327	4			
1	I	214	Total	C	N	O	S	0	1	0
			1611	1000	276	330	5			
1	K	212	Total	C	N	O	S	0	1	0
			1585	983	271	326	5			

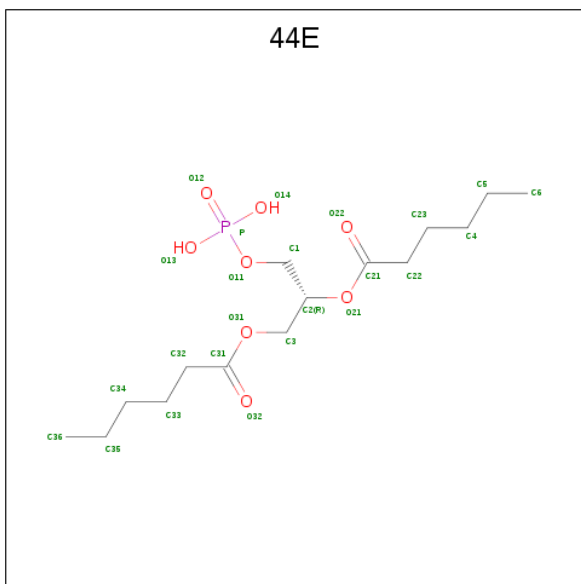
- Molecule 2 is a protein called 4E10 Fab heavy chain.

Mol	Chain	Residues	Atoms					ZeroOcc	AltConf	Trace
2	H	230	Total	C	N	O	S	0	6	0
			1716	1083	293	331	9			
2	A	227	Total	C	N	O	S	0	5	0
			1709	1081	293	327	8			
2	C	226	Total	C	N	O	S	0	2	0
			1648	1040	280	321	7			
2	E	218	Total	C	N	O	S	0	3	0
			1602	1014	269	312	7			
2	G	219	Total	C	N	O	S	0	3	0
			1606	1016	268	314	8			
2	J	217	Total	C	N	O	S	0	3	0
			1553	984	256	305	8			

- Molecule 3 is UNKNOWN LIGAND (three-letter code: UNL) (formula:).

Mol	Chain	Residues	Atoms			ZeroOcc	AltConf
3	D	1	Total 18	C 12	O 6	0	0
3	K	1	Total 18	C 12	O 6	0	0
3	B	1	Total 21	C 14	O 7	0	0
3	I	1	Total 21	C 14	O 7	0	0
3	L	1	Total 21	C 14	O 7	0	0
3	F	1	Total 6	C 4	O 2	0	0

- Molecule 4 is (2R)-3-(phosphonoxy)propane-1,2-diyl dihexanoate (three-letter code: 44E) (formula: C₁₅H₂₉O₈P).



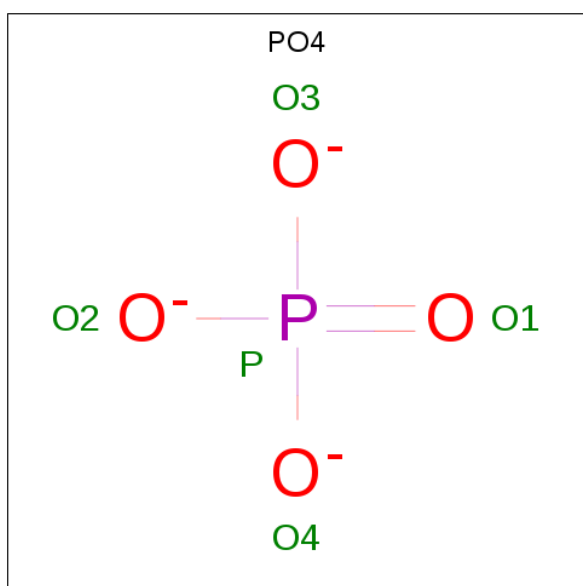
Mol	Chain	Residues	Atoms				ZeroOcc	AltConf
4	H	1	Total 17	C 8	O 8	P 1	0	0
4	A	1	Total 10	C 3	O 6	P 1	0	0
4	A	1	Total 16	C 9	O 6	P 1	0	0

- Molecule 5 is GLYCEROL (three-letter code: GOL) (formula: $\text{C}_3\text{H}_8\text{O}_3$).



Mol	Chain	Residues	Atoms			ZeroOcc	AltConf
5	B	1	Total	C	O	0	0
			6	3	3		
5	A	1	Total	C	O	0	0
			6	3	3		

- Molecule 6 is PHOSPHATE ION (three-letter code: PO4) (formula: O_4P).



Mol	Chain	Residues	Atoms			ZeroOcc	AltConf
6	C	1	Total	O	P	0	0
			5	4	1		
6	E	1	Total	O	P	0	0
			5	4	1		

Continued on next page...

Continued from previous page...

Mol	Chain	Residues	Atoms			ZeroOcc	AltConf
6	G	1	Total	O	P	0	0
			5	4	1		
6	J	1	Total	O	P	0	0
			5	4	1		

- Molecule 7 is water.

Mol	Chain	Residues	Atoms		ZeroOcc	AltConf
7	L	72	Total	O	0	0
			72	72		
7	H	63	Total	O	0	0
			63	63		
7	B	73	Total	O	0	0
			73	73		
7	A	72	Total	O	0	0
			72	72		
7	D	35	Total	O	0	0
			35	35		
7	C	41	Total	O	0	0
			41	41		
7	F	34	Total	O	0	0
			34	34		
7	E	32	Total	O	0	0
			32	32		
7	I	19	Total	O	0	0
			19	19		
7	G	35	Total	O	0	0
			35	35		
7	K	14	Total	O	0	0
			14	14		
7	J	4	Total	O	0	0
			4	4		

3 Residue-property plots [i](#)

These plots are drawn for all protein, RNA and DNA chains in the entry. The first graphic for a chain summarises the proportions of the various outlier classes displayed in the second graphic. The second graphic shows the sequence view annotated by issues in geometry and electron density. Residues are color-coded according to the number of geometric quality criteria for which they contain at least one outlier: green = 0, yellow = 1, orange = 2 and red = 3 or more. A red dot above a residue indicates a poor fit to the electron density ($RSRZ > 2$). Stretches of 2 or more consecutive residues without any outlier are shown as a green connector. Residues present in the sample, but not in the model, are shown in grey.

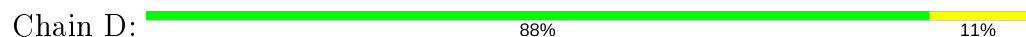
- Molecule 1: 4E10 Fab light chain



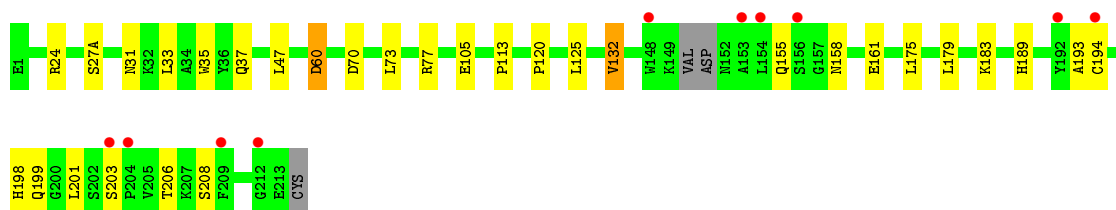
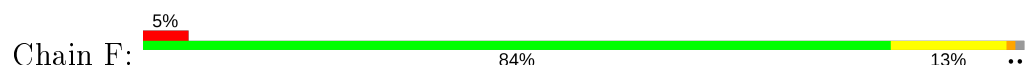
- Molecule 1: 4E10 Fab light chain



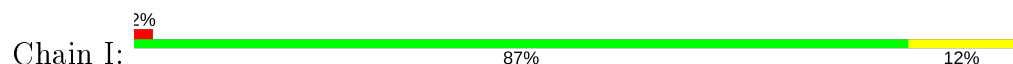
- Molecule 1: 4E10 Fab light chain



- Molecule 1: 4E10 Fab light chain

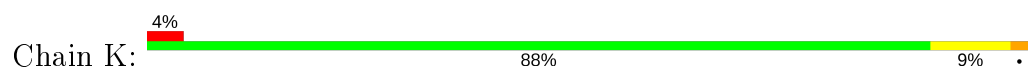


- Molecule 1: 4E10 Fab light chain

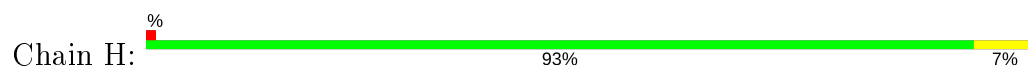




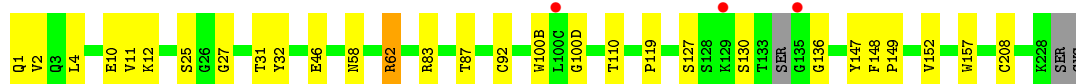
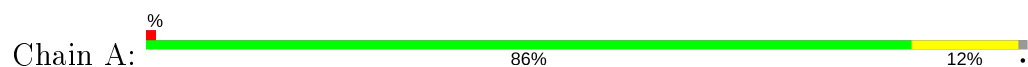
- Molecule 1: 4E10 Fab light chain



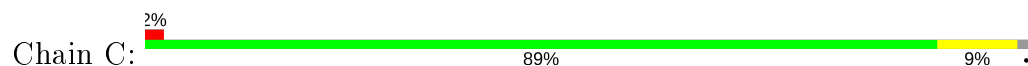
- Molecule 2: 4E10 Fab heavy chain



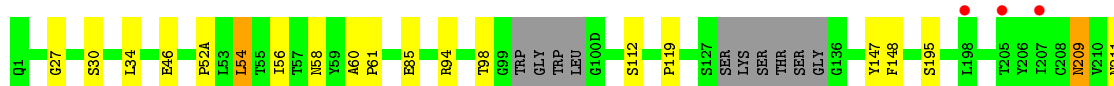
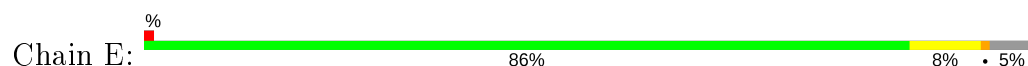
- Molecule 2: 4E10 Fab heavy chain



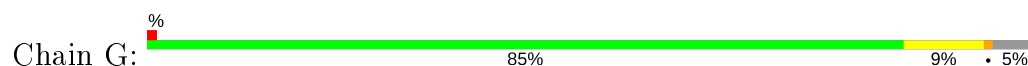
- Molecule 2: 4E10 Fab heavy chain

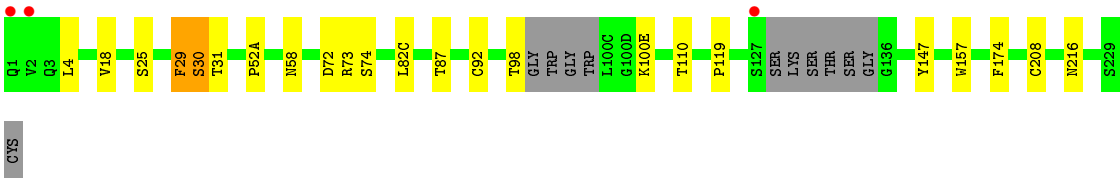


- Molecule 2: 4E10 Fab heavy chain

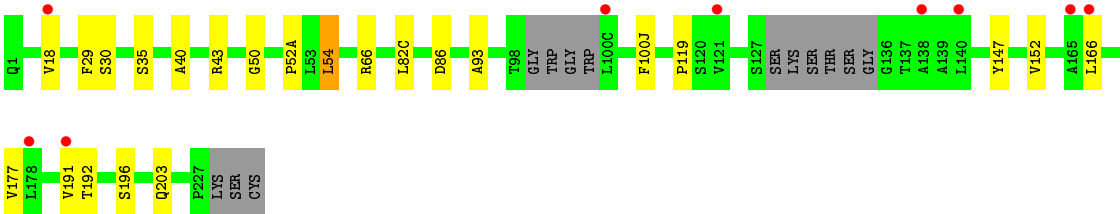
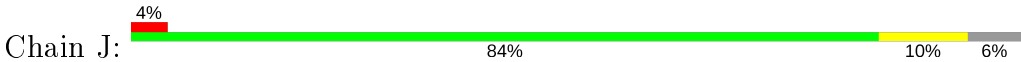


- Molecule 2: 4E10 Fab heavy chain





● Molecule 2: 4E10 Fab heavy chain



4 Data and refinement statistics

Property	Value	Source
Space group	P 61 2 2	Depositor
Cell constants a, b, c, α , β , γ	149.56 Å 149.56 Å 470.50 Å 90.00° 90.00° 120.00°	Depositor
Resolution (Å)	39.24 – 2.73 39.24 – 2.73	Depositor EDS
% Data completeness (in resolution range)	97.6 (39.24-2.73) 97.6 (39.24-2.73)	Depositor EDS
R_{merge}	(Not available)	Depositor
R_{sym}	0.10	Depositor
$\langle I/\sigma(I) \rangle$ ¹	1.81 (at 2.73 Å)	Xtriage
Refinement program	PHENIX 1.8.4_1496	Depositor
R, R_{free}	0.202 , 0.246 0.205 , 0.247	Depositor DCC
R_{free} test set	4060 reflections (5.00%)	wwPDB-VP
Wilson B-factor (Å ²)	46.1	Xtriage
Anisotropy	0.125	Xtriage
Bulk solvent k_{sol} (e/Å ³), B_{sol} (Å ²)	0.31 , 43.1	EDS
L-test for twinning ²	$\langle L \rangle = 0.46$, $\langle L^2 \rangle = 0.29$	Xtriage
Estimated twinning fraction	No twinning to report.	Xtriage
F_o, F_c correlation	0.92	EDS
Total number of atoms	20282	wwPDB-VP
Average B, all atoms (Å ²)	49.0	wwPDB-VP

Xtriage's analysis on translational NCS is as follows: *The analyses of the Patterson function reveals a significant off-origin peak that is 20.61 % of the origin peak, indicating pseudo-translational symmetry. The chance of finding a peak of this or larger height randomly in a structure without pseudo-translational symmetry is equal to 8.3657e-03.*

¹Intensities estimated from amplitudes.

²Theoretical values of $\langle |L| \rangle$, $\langle L^2 \rangle$ for acentric reflections are 0.5, 0.333 respectively for untwinned datasets, and 0.375, 0.2 for perfectly twinned datasets.

5 Model quality [i](#)

5.1 Standard geometry [i](#)

Bond lengths and bond angles in the following residue types are not validated in this section: GOL, PO4, UNL, 44E

The Z score for a bond length (or angle) is the number of standard deviations the observed value is removed from the expected value. A bond length (or angle) with $|Z| > 5$ is considered an outlier worth inspection. RMSZ is the root-mean-square of all Z scores of the bond lengths (or angles).

Mol	Chain	Bond lengths		Bond angles	
		RMSZ	# Z >5	RMSZ	# Z >5
1	B	0.26	0/1695	0.44	0/2297
1	D	0.25	0/1710	0.45	0/2319
1	F	0.25	0/1632	0.48	0/2218
1	I	0.25	0/1647	0.44	0/2240
1	K	0.25	0/1621	0.47	0/2210
1	L	0.25	0/1684	0.45	0/2285
2	A	0.26	0/1760	0.46	0/2401
2	C	0.27	0/1692	0.45	0/2311
2	E	0.24	0/1648	0.45	0/2252
2	G	0.24	0/1652	0.47	0/2259
2	H	0.25	0/1774	0.47	0/2424
2	J	0.23	0/1599	0.45	0/2197
All	All	0.25	0/20114	0.46	0/27413

There are no bond length outliers.

There are no bond angle outliers.

There are no chirality outliers.

There are no planarity outliers.

5.2 Too-close contacts [i](#)

In the following table, the Non-H and H(model) columns list the number of non-hydrogen atoms and hydrogen atoms in the chain respectively. The H(added) column lists the number of hydrogen atoms added and optimized by MolProbity. The Clashes column lists the number of clashes within the asymmetric unit, whereas Symm-Clashes lists symmetry related clashes.

Mol	Chain	Non-H	H(model)	H(added)	Clashes	Symm-Clashes
1	B	1659	0	1610	12	0

Continued on next page...

Continued from previous page...

Mol	Chain	Non-H	H(model)	H(added)	Clashes	Symm-Clashes
1	D	1671	0	1617	12	0
1	F	1600	0	1501	16	0
1	I	1611	0	1525	15	0
1	K	1585	0	1481	12	0
1	L	1648	0	1587	10	0
2	A	1709	0	1701	13	0
2	C	1648	0	1622	9	0
2	E	1602	0	1576	9	0
2	G	1606	0	1572	12	0
2	H	1716	0	1698	8	0
2	J	1553	0	1479	10	0
3	B	21	0	0	0	0
3	D	18	0	0	0	0
3	F	6	0	0	0	0
3	I	21	0	0	0	0
3	K	18	0	0	0	0
3	L	21	0	0	0	0
4	A	26	0	24	0	0
4	H	17	0	9	1	0
5	A	6	0	8	0	0
5	B	6	0	8	0	0
6	C	5	0	0	0	0
6	E	5	0	0	0	0
6	G	5	0	0	0	0
6	J	5	0	0	1	0
7	A	72	0	0	0	0
7	B	73	0	0	0	0
7	C	41	0	0	1	0
7	D	35	0	0	0	0
7	E	32	0	0	2	0
7	F	34	0	0	0	0
7	G	35	0	0	0	0
7	H	63	0	0	0	0
7	I	19	0	0	0	0
7	J	4	0	0	0	0
7	K	14	0	0	1	0
7	L	72	0	0	0	0
All	All	20282	0	19018	133	0

The all-atom clashscore is defined as the number of clashes found per 1000 atoms (including hydrogen atoms). The all-atom clashscore for this structure is 3.

The worst 5 of 133 close contacts within the same asymmetric unit are listed below, sorted by their clash magnitude.

Atom-1	Atom-2	Interatomic distance (Å)	Clash overlap (Å)
2:A:127:SER:HB3	2:A:130:SER:HB3	1.59	0.85
1:D:77[B]:ARG:NH2	1:D:79:GLU:OE2	2.19	0.76
2:A:46:GLU:OE2	2:A:62[B]:ARG:NH2	2.22	0.73
1:I:32:LYS:HD2	1:I:92:GLY:HA2	1.72	0.70
1:B:24:ARG:NH1	1:B:70:ASP:OD1	2.23	0.70

There are no symmetry-related clashes.

5.3 Torsion angles [i](#)

5.3.1 Protein backbone [i](#)

In the following table, the Percentiles column shows the percent Ramachandran outliers of the chain as a percentile score with respect to all X-ray entries followed by that with respect to entries of similar resolution.

The Analysed column shows the number of residues for which the backbone conformation was analysed, and the total number of residues.

Mol	Chain	Analysed	Favoured	Allowed	Outliers	Percentiles	
1	B	215/215 (100%)	208 (97%)	7 (3%)	0	100	100
1	D	217/215 (101%)	208 (96%)	7 (3%)	2 (1%)	17	32
1	F	209/215 (97%)	196 (94%)	13 (6%)	0	100	100
1	I	213/215 (99%)	205 (96%)	8 (4%)	0	100	100
1	K	211/215 (98%)	203 (96%)	8 (4%)	0	100	100
1	L	215/215 (100%)	208 (97%)	7 (3%)	0	100	100
2	A	228/230 (99%)	221 (97%)	6 (3%)	1 (0%)	34	55
2	C	224/230 (97%)	218 (97%)	6 (3%)	0	100	100
2	E	215/230 (94%)	209 (97%)	5 (2%)	1 (0%)	29	48
2	G	216/230 (94%)	209 (97%)	5 (2%)	2 (1%)	17	32
2	H	234/230 (102%)	230 (98%)	4 (2%)	0	100	100
2	J	214/230 (93%)	209 (98%)	5 (2%)	0	100	100
All	All	2611/2670 (98%)	2524 (97%)	81 (3%)	6 (0%)	47	69

5 of 6 Ramachandran outliers are listed below:

Mol	Chain	Res	Type
2	G	30	SER

Continued on next page...

Continued from previous page...

Mol	Chain	Res	Type
1	D	29	GLY
2	A	136	GLY
1	D	30	ASN
2	E	27	GLY

5.3.2 Protein sidechains ⓘ

In the following table, the Percentiles column shows the percent sidechain outliers of the chain as a percentile score with respect to all X-ray entries followed by that with respect to entries of similar resolution.

The Analysed column shows the number of residues for which the sidechain conformation was analysed, and the total number of residues.

Mol	Chain	Analysed	Rotameric	Outliers	Percentiles	
1	B	187/185 (101%)	184 (98%)	3 (2%)	62	78
1	D	188/185 (102%)	185 (98%)	3 (2%)	62	78
1	F	173/185 (94%)	162 (94%)	11 (6%)	17	31
1	I	177/185 (96%)	171 (97%)	6 (3%)	37	58
1	K	173/185 (94%)	164 (95%)	9 (5%)	23	39
1	L	185/185 (100%)	183 (99%)	2 (1%)	73	84
2	A	191/189 (101%)	185 (97%)	6 (3%)	40	60
2	C	181/189 (96%)	174 (96%)	7 (4%)	32	53
2	E	177/189 (94%)	171 (97%)	6 (3%)	37	58
2	G	178/189 (94%)	175 (98%)	3 (2%)	60	76
2	H	192/189 (102%)	187 (97%)	5 (3%)	46	66
2	J	167/189 (88%)	161 (96%)	6 (4%)	35	55
All	All	2169/2244 (97%)	2102 (97%)	67 (3%)	41	60

5 of 67 residues with a non-rotameric sidechain are listed below:

Mol	Chain	Res	Type
1	F	77	ARG
2	E	54	LEU
2	J	54	LEU
1	F	105	GLU
1	F	201	LEU

Some sidechains can be flipped to improve hydrogen bonding and reduce clashes. All (1) such sidechains are listed below:

Mol	Chain	Res	Type
1	L	124	GLN

5.3.3 RNA [i](#)

There are no RNA molecules in this entry.

5.4 Non-standard residues in protein, DNA, RNA chains [i](#)

There are no non-standard protein/DNA/RNA residues in this entry.

5.5 Carbohydrates [i](#)

There are no carbohydrates in this entry.

5.6 Ligand geometry [i](#)

Of 15 ligands modelled in this entry, 6 are unknown - leaving 9 for Mogul analysis.

In the following table, the Counts columns list the number of bonds (or angles) for which Mogul statistics could be retrieved, the number of bonds (or angles) that are observed in the model and the number of bonds (or angles) that are defined in the Chemical Component Dictionary. The Link column lists molecule types, if any, to which the group is linked. The Z score for a bond length (or angle) is the number of standard deviations the observed value is removed from the expected value. A bond length (or angle) with $|Z| > 2$ is considered an outlier worth inspection. RMSZ is the root-mean-square of all Z scores of the bond lengths (or angles).

Mol	Type	Chain	Res	Link	Bond lengths			Bond angles		
					Counts	RMSZ	$\# Z > 2$	Counts	RMSZ	$\# Z > 2$
6	PO4	J	301	-	4,4,4	0.87	0	6,6,6	0.48	0
5	GOL	B	302	-	5,5,5	0.36	0	5,5,5	0.24	0
4	44E	A	301	-	9,9,23	0.66	0	11,12,28	0.62	0
6	PO4	C	301	-	4,4,4	0.91	0	6,6,6	0.43	0
4	44E	H	301	-	16,16,23	0.50	0	20,21,28	0.72	0
6	PO4	E	301	-	4,4,4	0.89	0	6,6,6	0.45	0
5	GOL	A	303	-	5,5,5	0.35	0	5,5,5	0.30	0
6	PO4	G	301	-	4,4,4	0.92	0	6,6,6	0.42	0
4	44E	A	302	-	15,15,23	0.46	0	18,18,28	0.64	0

In the following table, the Chirals column lists the number of chiral outliers, the number of chiral

centers analysed, the number of these observed in the model and the number defined in the Chemical Component Dictionary. Similar counts are reported in the Torsion and Rings columns. '-' means no outliers of that kind were identified.

Mol	Type	Chain	Res	Link	Chirals	Torsions	Rings
4	44E	H	301	-	-	6/17/17/25	-
5	GOL	A	303	-	-	2/4/4/4	-
5	GOL	B	302	-	-	4/4/4/4	-
4	44E	A	301	-	-	2/8/8/25	-
4	44E	A	302	-	-	3/14/14/25	-

There are no bond length outliers.

There are no bond angle outliers.

There are no chirality outliers.

5 of 17 torsion outliers are listed below:

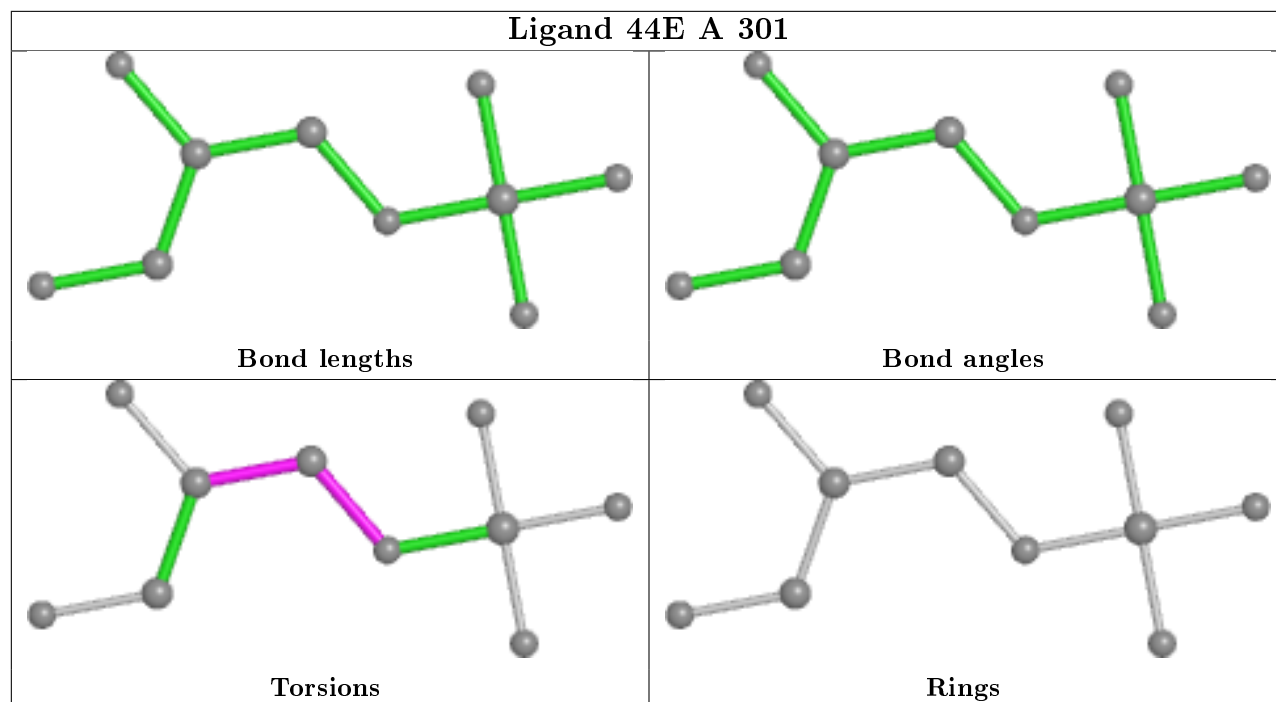
Mol	Chain	Res	Type	Atoms
5	B	302	GOL	O1-C1-C2-C3
5	B	302	GOL	C1-C2-C3-O3
5	A	303	GOL	O1-C1-C2-C3
4	H	301	44E	O32-C31-O31-C3
4	H	301	44E	C22-C21-O21-C2

There are no ring outliers.

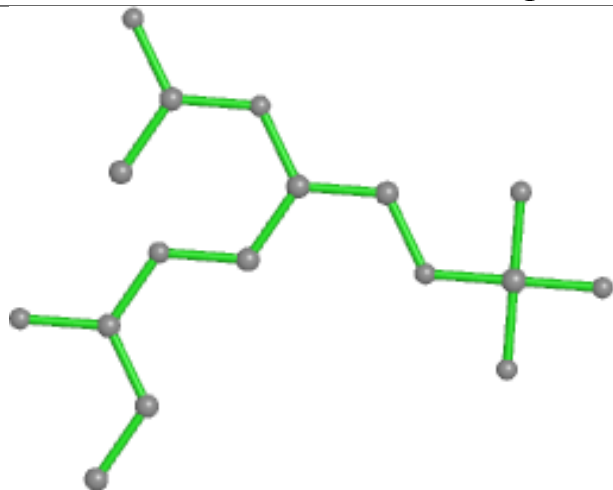
2 monomers are involved in 2 short contacts:

Mol	Chain	Res	Type	Clashes	Symm-Clashes
6	J	301	PO4	1	0
4	H	301	44E	1	0

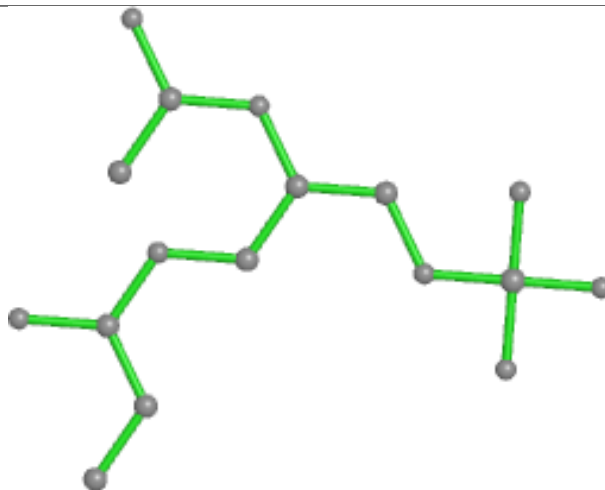
The following is a two-dimensional graphical depiction of Mogul quality analysis of bond lengths, bond angles, torsion angles, and ring geometry for all instances of the Ligand of Interest. In addition, ligands with molecular weight > 250 and outliers as shown on the validation Tables will also be included. For torsion angles, if less than 5% of the Mogul distribution of torsion angles is within 10 degrees of the torsion angle in question, then that torsion angle is considered an outlier. Any bond that is central to one or more torsion angles identified as an outlier by Mogul will be highlighted in the graph. For rings, the root-mean-square deviation (RMSD) between the ring in question and similar rings identified by Mogul is calculated over all ring torsion angles. If the average RMSD is greater than 60 degrees and the minimal RMSD between the ring in question and any Mogul-identified rings is also greater than 60 degrees, then that ring is considered an outlier. The outliers are highlighted in purple. The color gray indicates Mogul did not find sufficient equivalents in the CSD to analyse the geometry.



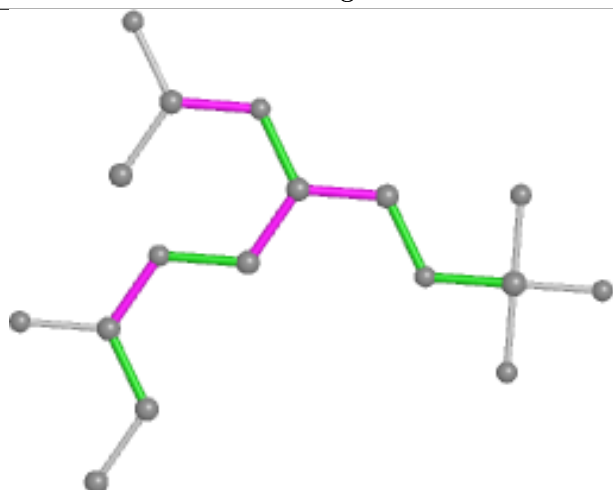
Ligand 44E H 301



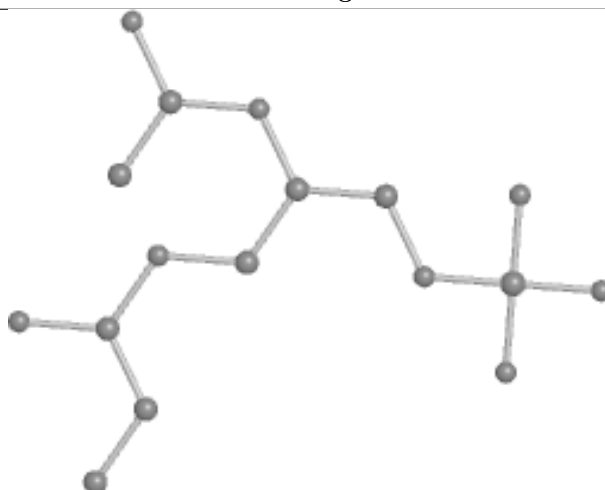
Bond lengths



Bond angles

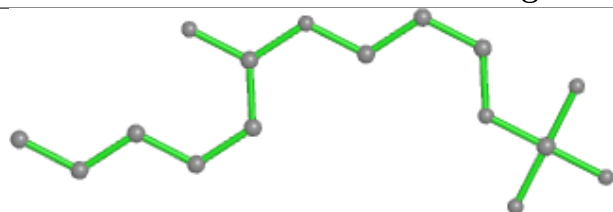


Torsions

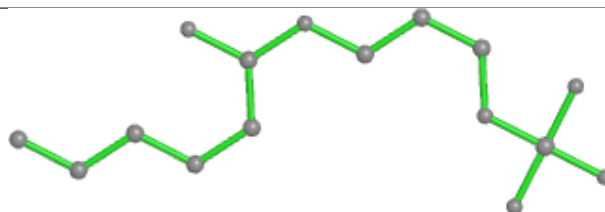


Rings

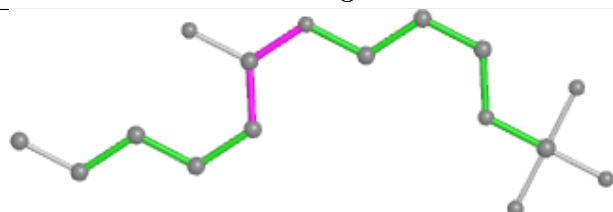
Ligand 44E A 302



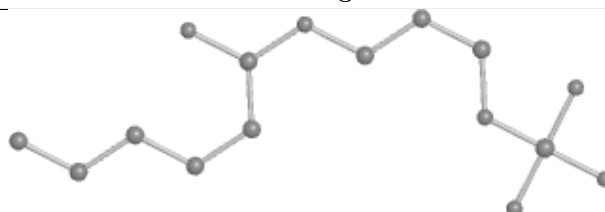
Bond lengths



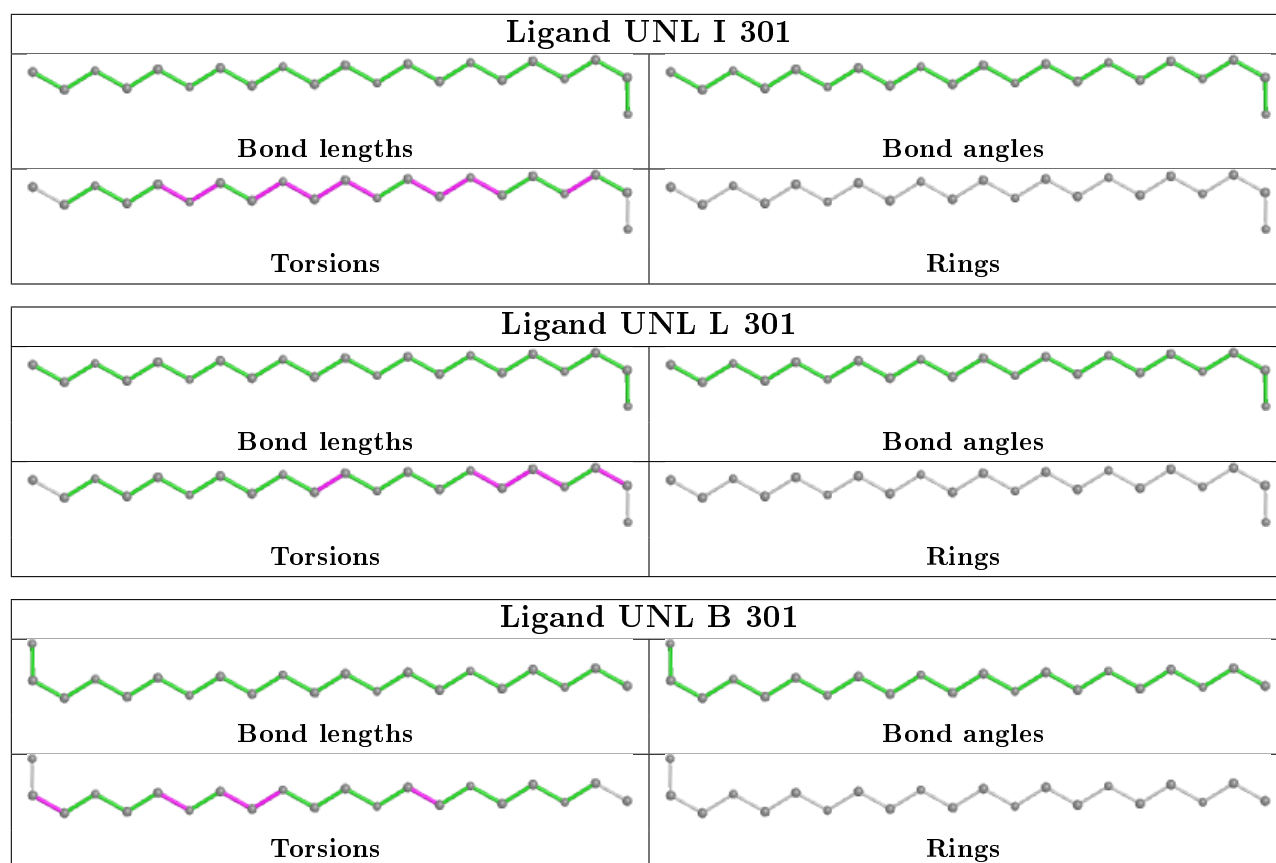
Bond angles



Torsions



Rings



5.7 Other polymers [i](#)

There are no such residues in this entry.

5.8 Polymer linkage issues [i](#)

There are no chain breaks in this entry.

6 Fit of model and data ⓘ

6.1 Protein, DNA and RNA chains ⓘ

In the following table, the column labelled ‘#RSRZ> 2’ contains the number (and percentage) of RSRZ outliers, followed by percent RSRZ outliers for the chain as percentile scores relative to all X-ray entries and entries of similar resolution. The OWAB column contains the minimum, median, 95th percentile and maximum values of the occupancy-weighted average B-factor per residue. The column labelled ‘Q< 0.9’ lists the number of (and percentage) of residues with an average occupancy less than 0.9.

Mol	Chain	Analysed	<RSRZ>	#RSRZ>2	OWAB(Å ²)	Q<0.9
1	B	214/215 (99%)	-0.33	0 100 100	20, 33, 51, 76	0
1	D	214/215 (99%)	-0.25	0 100 100	26, 43, 61, 73	0
1	F	212/215 (98%)	0.17	10 (4%) 31 34	27, 54, 95, 107	0
1	I	214/215 (99%)	0.07	4 (1%) 66 73	38, 60, 80, 96	0
1	K	212/215 (98%)	0.23	9 (4%) 36 39	43, 72, 100, 107	0
1	L	214/215 (99%)	-0.27	2 (0%) 84 88	24, 37, 58, 80	0
2	A	227/230 (98%)	-0.27	3 (1%) 77 82	19, 31, 63, 89	0
2	C	226/230 (98%)	-0.24	5 (2%) 62 69	26, 40, 81, 100	0
2	E	218/230 (94%)	-0.10	3 (1%) 75 80	25, 43, 86, 104	0
2	G	219/230 (95%)	-0.03	3 (1%) 75 80	32, 52, 74, 106	0
2	H	230/230 (100%)	-0.25	2 (0%) 84 88	20, 34, 65, 86	0
2	J	217/230 (94%)	0.48	9 (4%) 37 41	45, 79, 102, 115	0
All	All	2617/2670 (98%)	-0.07	50 (1%) 66 73	19, 46, 90, 115	0

The worst 5 of 50 RSRZ outliers are listed below:

Mol	Chain	Res	Type	RSRZ
2	J	100(C)	LEU	5.0
2	C	134	SER	4.6
1	F	154	LEU	4.4
1	K	150	VAL	4.2
1	F	203	SER	4.1

6.2 Non-standard residues in protein, DNA, RNA chains ⓘ

There are no non-standard protein/DNA/RNA residues in this entry.

6.3 Carbohydrates ⓘ

There are no carbohydrates in this entry.

6.4 Ligands ⓘ

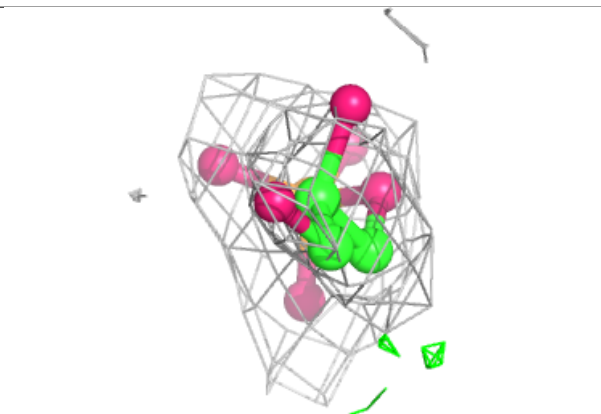
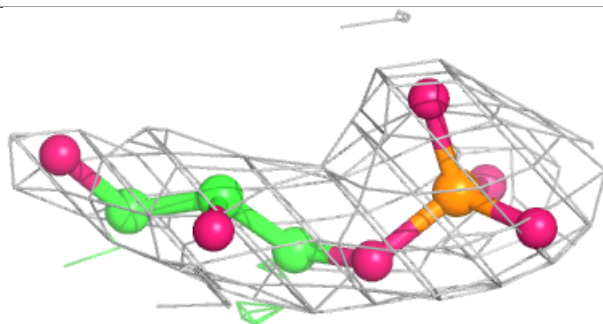
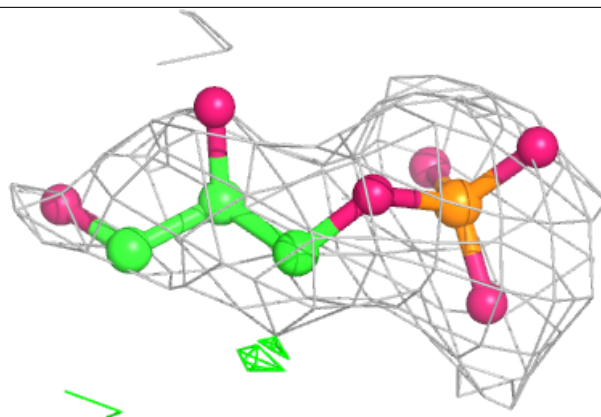
In the following table, the Atoms column lists the number of modelled atoms in the group and the number defined in the chemical component dictionary. The B-factors column lists the minimum, median, 95th percentile and maximum values of B factors of atoms in the group. The column labelled 'Q< 0.9' lists the number of atoms with occupancy less than 0.9.

Mol	Type	Chain	Res	Atoms	RSCC	RSR	B-factors(\AA^2)	Q<0.9
5	GOL	A	303	6/6	0.72	0.28	45,52,61,68	0
6	PO4	C	301	5/5	0.83	0.18	88,90,99,109	0
4	44E	A	301	10/24	0.83	0.22	74,79,95,115	0
6	PO4	J	301	5/5	0.86	0.17	72,85,89,98	0
3	UNL	D	301	18/-	0.87	0.25	45,55,65,65	0
5	GOL	B	302	6/6	0.88	0.24	26,43,46,46	0
3	UNL	K	301	18/-	0.89	0.16	50,66,78,86	0
3	UNL	F	301	6/-	0.89	0.21	46,50,64,69	0
3	UNL	I	301	21/-	0.90	0.19	45,55,63,65	0
4	44E	H	301	17/24	0.91	0.24	49,71,85,87	0
6	PO4	G	301	5/5	0.91	0.15	76,81,96,96	0
6	PO4	E	301	5/5	0.91	0.21	64,69,96,112	0
3	UNL	L	301	21/-	0.93	0.16	23,34,43,51	0
3	UNL	B	301	21/-	0.93	0.15	30,41,51,59	0
4	44E	A	302	16/24	0.93	0.23	46,70,80,82	0

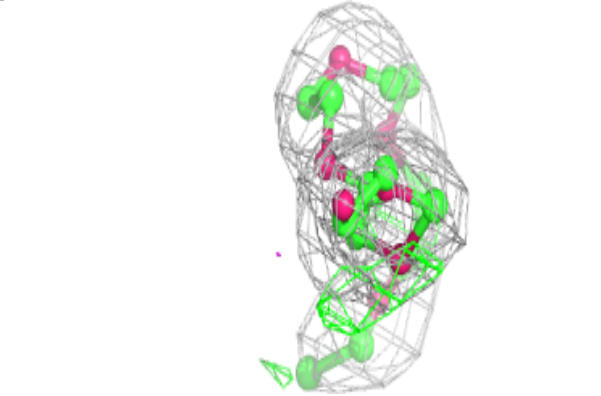
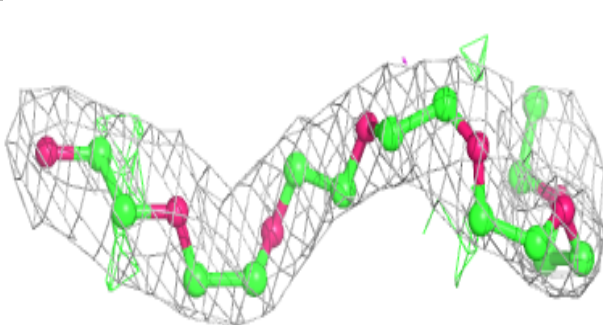
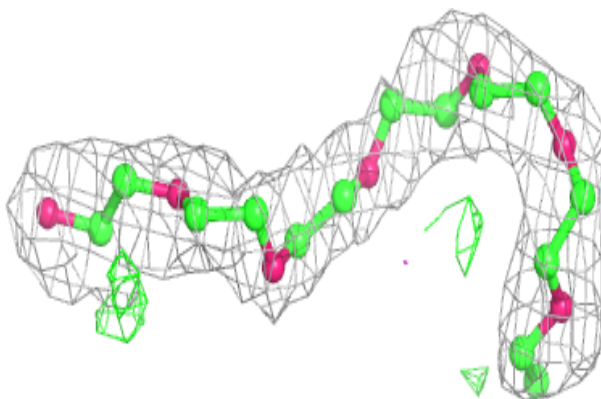
The following is a graphical depiction of the model fit to experimental electron density of all instances of the Ligand of Interest. In addition, ligands with molecular weight > 250 and outliers as shown on the geometry validation Tables will also be included. Each fit is shown from different orientation to approximate a three-dimensional view.

Electron density around 44E A 301:

$2mF_o-DF_c$ (at 0.7 rmsd) in gray
 mF_o-DF_c (at 3 rmsd) in purple (negative)
and green (positive)

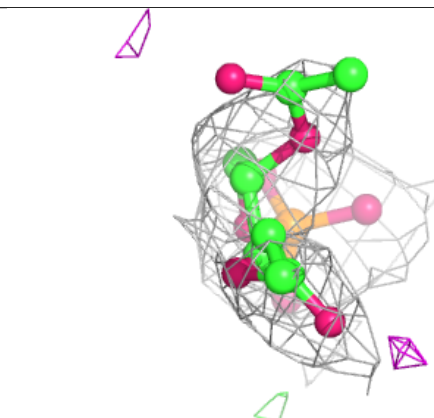
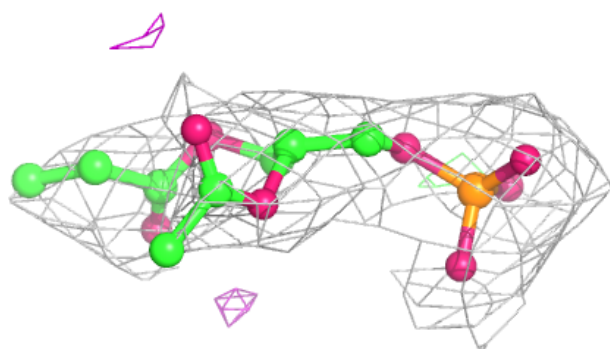
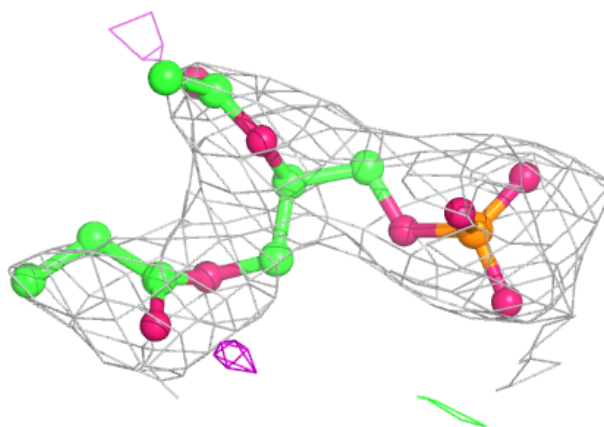
**Electron density around UNL I 301:**

$2mF_o-DF_c$ (at 0.7 rmsd) in gray
 mF_o-DF_c (at 3 rmsd) in purple (negative)
and green (positive)

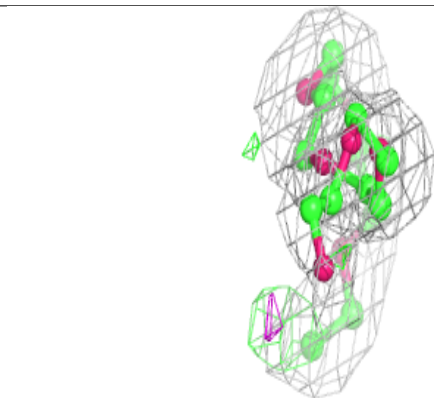
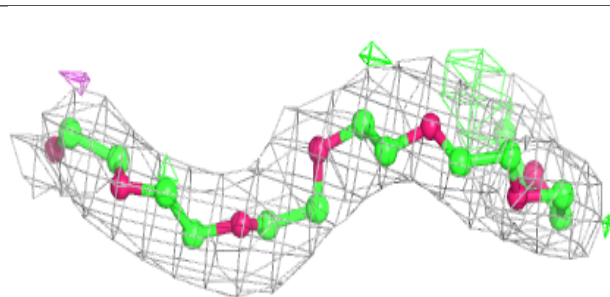
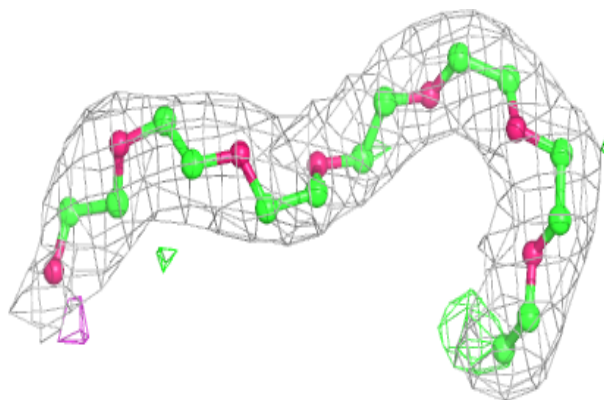


Electron density around 44E H 301:

$2mF_o-DF_c$ (at 0.7 rmsd) in gray
 mF_o-DF_c (at 3 rmsd) in purple (negative)
and green (positive)

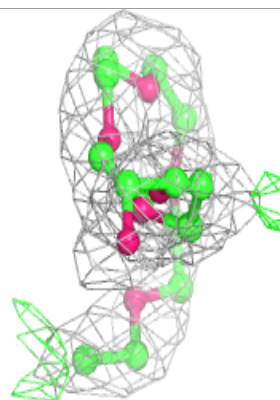
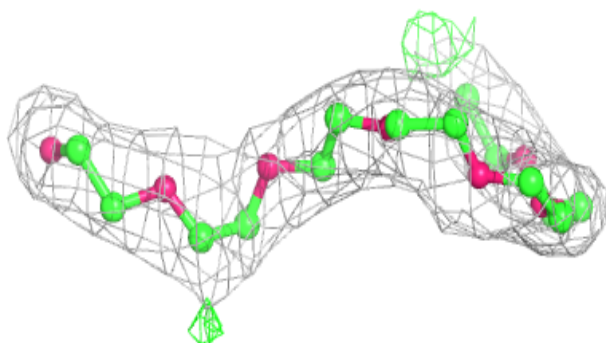
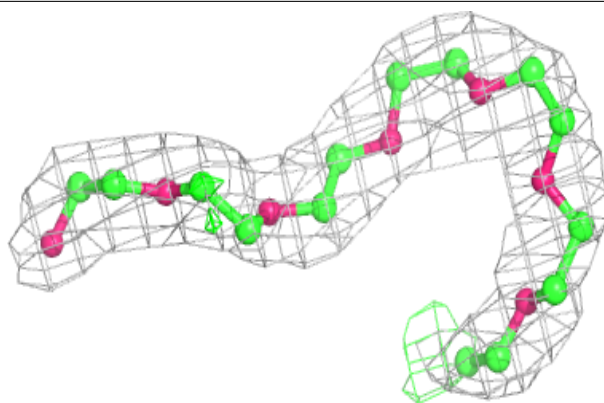
**Electron density around UNL L 301:**

$2mF_o-DF_c$ (at 0.7 rmsd) in gray
 mF_o-DF_c (at 3 rmsd) in purple (negative)
and green (positive)

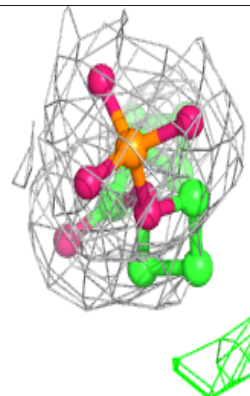
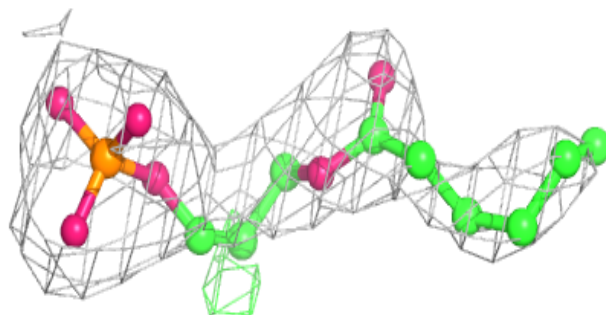
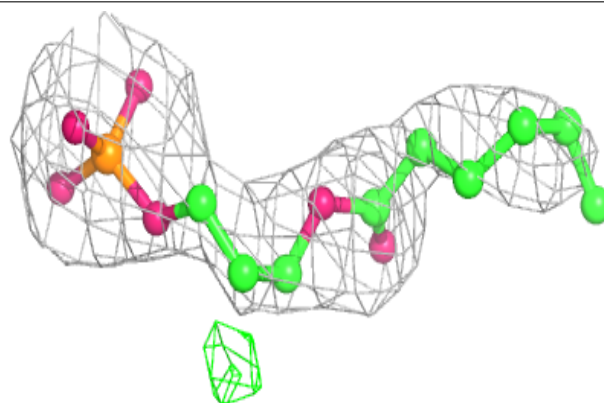


Electron density around UNL B 301:

$2mF_o-DF_c$ (at 0.7 rmsd) in gray
 mF_o-DF_c (at 3 rmsd) in purple (negative)
and green (positive)

**Electron density around 44E A 302:**

$2mF_o-DF_c$ (at 0.7 rmsd) in gray
 mF_o-DF_c (at 3 rmsd) in purple (negative)
and green (positive)



6.5 Other polymers [i](#)

There are no such residues in this entry.