



# wwPDB X-ray Structure Validation Summary Report ⓘ

Oct 6, 2021 – 12:08 PM EDT

PDB ID : 6XBB  
Title : Crystal structure of Streptomyces svaceus SsDesB in complex with NADP+  
Authors : Lountos, G.T.; Giddings, L.A.; Waugh, D.S.  
Deposited on : 2020-06-05  
Resolution : 2.37 Å(reported)

This is a wwPDB X-ray Structure Validation Summary Report for a publicly released PDB entry.

We welcome your comments at [validation@mail.wwpdb.org](mailto:validation@mail.wwpdb.org)

A user guide is available at

<https://www.wwpdb.org/validation/2017/XrayValidationReportHelp>

with specific help available everywhere you see the ⓘ symbol.

---

The following versions of software and data (see [references ⓘ](#)) were used in the production of this report:

MolProbity : 4.02b-467  
Mogul : 1.8.5 (274361), CSD as541be (2020)  
Xtriage (Phenix) : 1.13  
EDS : 2.23.2  
buster-report : 1.1.7 (2018)  
Percentile statistics : 20191225.v01 (using entries in the PDB archive December 25th 2019)  
Refmac : 5.8.0158  
CCP4 : 7.0.044 (Gargrove)  
Ideal geometry (proteins) : Engh & Huber (2001)  
Ideal geometry (DNA, RNA) : Parkinson et al. (1996)  
Validation Pipeline (wwPDB-VP) : 2.23.2

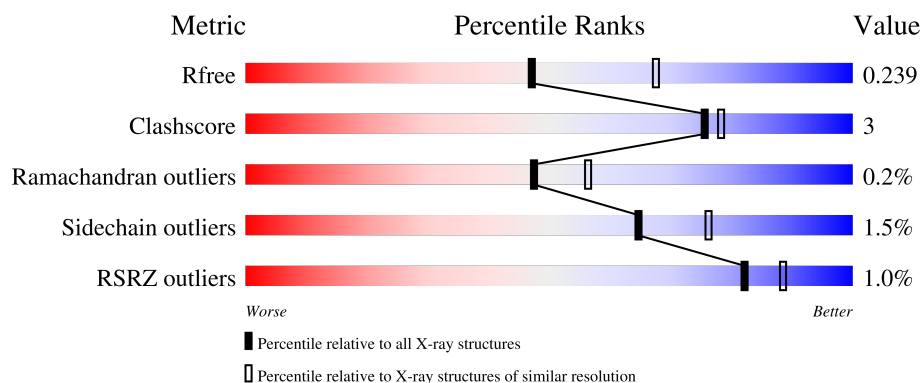
# 1 Overall quality at a glance

The following experimental techniques were used to determine the structure:

*X-RAY DIFFRACTION*






The reported resolution of this entry is 2.37 Å.

Percentile scores (ranging between 0-100) for global validation metrics of the entry are shown in the following graphic. The table shows the number of entries on which the scores are based.



Metric	Whole archive (#Entries)	Similar resolution (#Entries, resolution range(Å))
$R_{free}$	130704	1164 (2.36-2.36)
Clashscore	141614	1232 (2.36-2.36)
Ramachandran outliers	138981	1211 (2.36-2.36)
Sidechain outliers	138945	1212 (2.36-2.36)
RSRZ outliers	127900	1150 (2.36-2.36)

The table below summarises the geometric issues observed across the polymeric chains and their fit to the electron density. The red, orange, yellow and green segments of the lower bar indicate the fraction of residues that contain outliers for  $\geq 3$ , 2, 1 and 0 types of geometric quality criteria respectively. A grey segment represents the fraction of residues that are not modelled. The numeric value for each fraction is indicated below the corresponding segment, with a dot representing fractions  $\leq 5\%$ . The upper red bar (where present) indicates the fraction of residues that have poor fit to the electron density. The numeric value is given above the bar.

Mol	Chain	Length	Quality of chain
1	A	425	
1	B	425	
1	C	425	
1	D	425	
1	E	425	

*Continued on next page...*

Continued from previous page...

Mol	Chain	Length	Quality of chain
1	F	425	<div><div></div><div>2%</div><div>87%</div><div>11%</div><div></div></div>
1	G	425	<div><div></div><div>2%</div><div>87%</div><div>11%</div><div></div></div>
1	H	425	<div><div></div><div>%</div><div>89%</div><div>9%</div><div></div></div>

## 2 Entry composition

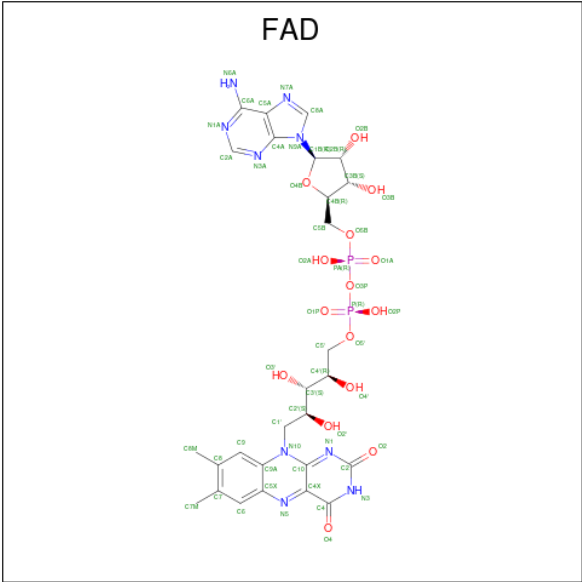
There are 4 unique types of molecules in this entry. The entry contains 28784 atoms, of which 0 are hydrogens and 0 are deuteriums.

In the tables below, the ZeroOcc column contains the number of atoms modelled with zero occupancy, the AltConf column contains the number of residues with at least one atom in alternate conformation and the Trace column contains the number of residues modelled with at most 2 atoms.

- Molecule 1 is a protein called Monooxygenase.

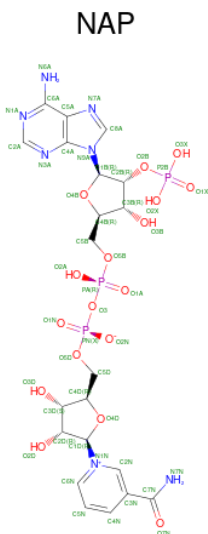
Mol	Chain	Residues	Atoms					ZeroOcc	AltConf	Trace
1	A	418	Total	C	N	O	S	0	0	0
			3353	2146	554	645	8			
1	B	416	Total	C	N	O	S	0	0	0
			3340	2138	552	642	8			
1	C	416	Total	C	N	O	S	0	0	0
			3340	2138	552	642	8			
1	D	417	Total	C	N	O	S	0	0	0
			3346	2141	553	644	8			
1	E	417	Total	C	N	O	S	0	0	0
			3346	2141	553	644	8			
1	F	416	Total	C	N	O	S	0	0	0
			3340	2138	552	642	8			
1	G	416	Total	C	N	O	S	0	0	0
			3340	2138	552	642	8			
1	H	420	Total	C	N	O	S	0	0	0
			3370	2155	557	650	8			

- Molecule 2 is FLAVIN-ADENINE DINUCLEOTIDE (three-letter code: FAD) (formula:  $C_{27}H_{33}N_9O_{15}P_2$ ) (labeled as "Ligand of Interest" by depositor).



Mol	Chain	Residues	Atoms					ZeroOcc	AltConf
2	A	1	Total	C	N	O	P	0	0
			53	27	9	15	2		
2	B	1	Total	C	N	O	P	0	0
			53	27	9	15	2		
2	C	1	Total	C	N	O	P	0	0
			53	27	9	15	2		
2	D	1	Total	C	N	O	P	0	0
			53	27	9	15	2		
2	E	1	Total	C	N	O	P	0	0
			53	27	9	15	2		
2	F	1	Total	C	N	O	P	0	0
			53	27	9	15	2		
2	G	1	Total	C	N	O	P	0	0
			53	27	9	15	2		
2	H	1	Total	C	N	O	P	0	0
			53	27	9	15	2		

- Molecule 3 is NADP NICOTINAMIDE-ADENINE-DINUCLEOTIDE PHOSPHATE (three-letter code: NAP) (formula: C<sub>21</sub>H<sub>28</sub>N<sub>7</sub>O<sub>17</sub>P<sub>3</sub>) (labeled as "Ligand of Interest" by depositor).



Mol	Chain	Residues	Atoms					ZeroOcc	AltConf
3	A	1	Total 48	C 21	N 7	O 17	P 3	0	0
3	B	1	Total 48	C 21	N 7	O 17	P 3	0	0
3	C	1	Total 48	C 21	N 7	O 17	P 3	0	0
3	D	1	Total 48	C 21	N 7	O 17	P 3	0	0
3	E	1	Total 48	C 21	N 7	O 17	P 3	0	0
3	F	1	Total 48	C 21	N 7	O 17	P 3	0	0
3	G	1	Total 48	C 21	N 7	O 17	P 3	0	0
3	H	1	Total 48	C 21	N 7	O 17	P 3	0	0

- Molecule 4 is water.

Mol	Chain	Residues	Atoms	ZeroOcc	AltConf
4	A	197	Total O 197 197	0	0
4	B	157	Total O 157 157	0	0
4	C	160	Total O 160 160	0	0
4	D	158	Total O 158 158	0	0

*Continued on next page...*

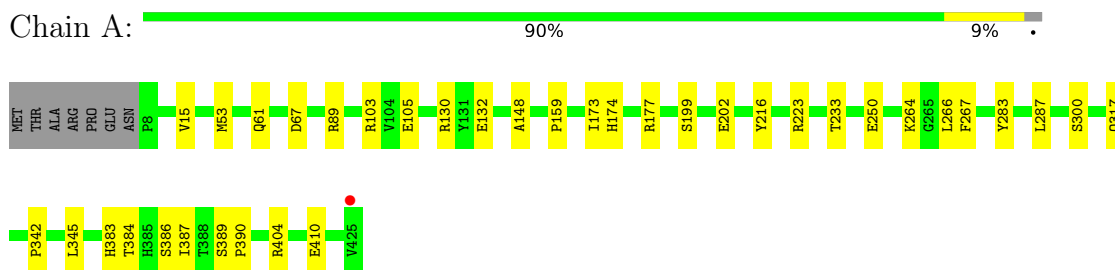
*Continued from previous page...*

Mol	Chain	Residues	Atoms		ZeroOcc	AltConf
4	E	142	Total 142	O 142	0	0
4	F	132	Total 132	O 132	0	0
4	G	135	Total 135	O 135	0	0
4	H	120	Total 120	O 120	0	0

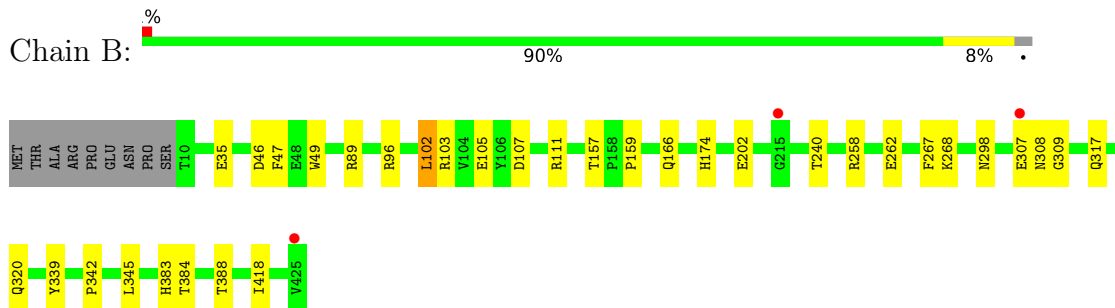
### 3 Residue-property plots [i](#)

These plots are drawn for all protein, RNA, DNA and oligosaccharide chains in the entry. The first graphic for a chain summarises the proportions of the various outlier classes displayed in the second graphic. The second graphic shows the sequence view annotated by issues in geometry and electron density. Residues are color-coded according to the number of geometric quality criteria for which they contain at least one outlier: green = 0, yellow = 1, orange = 2 and red = 3 or more. A red dot above a residue indicates a poor fit to the electron density ( $RSRZ > 2$ ). Stretches of 2 or more consecutive residues without any outlier are shown as a green connector. Residues present in the sample, but not in the model, are shown in grey.

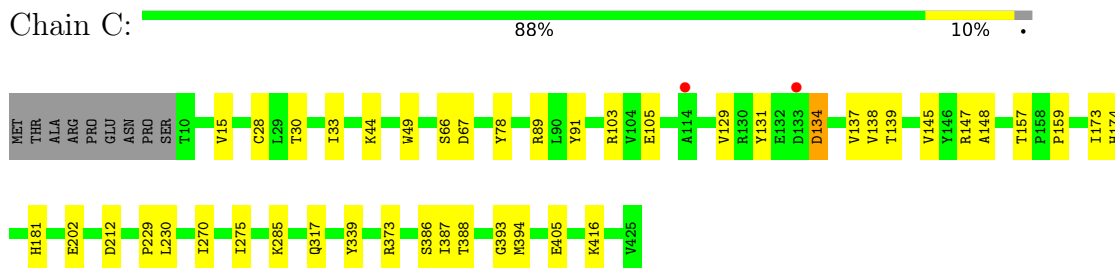
#### • Molecule 1: Monooxygenase



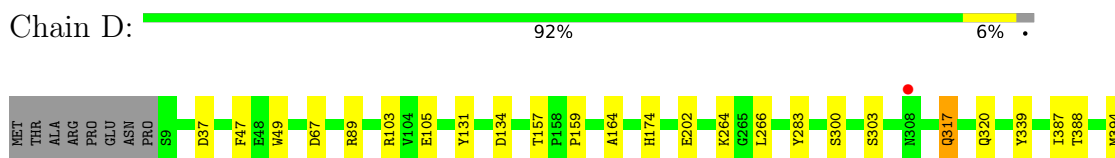
#### • Molecule 1: Monooxygenase

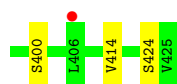


#### • Molecule 1: Monooxygenase

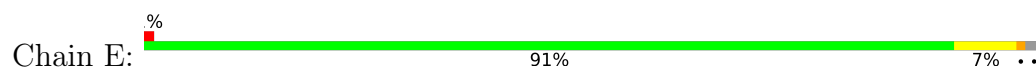


#### • Molecule 1: Monooxygenase

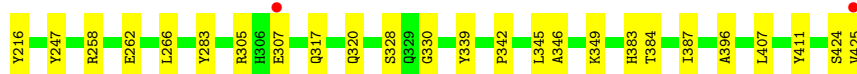
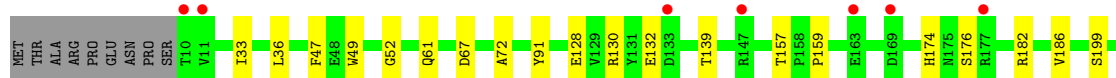
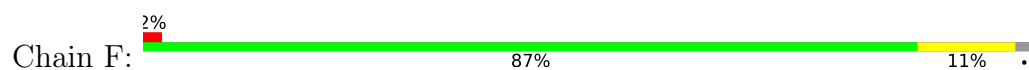




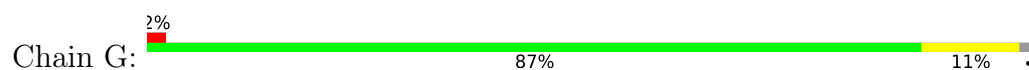
• Molecule 1: Monooxygenase



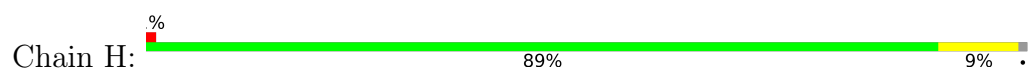
• Molecule 1: Monooxygenase



• Molecule 1: Monooxygenase



• Molecule 1: Monooxygenase



## 4 Data and refinement statistics

Property	Value	Source
Space group	P 1 21 1	Depositor
Cell constants a, b, c, $\alpha$ , $\beta$ , $\gamma$	84.12Å 153.43Å 141.31Å 90.00° 92.44° 90.00°	Depositor
Resolution (Å)	37.02 – 2.37 44.82 – 2.37	Depositor EDS
% Data completeness (in resolution range)	93.7 (37.02-2.37) 93.8 (44.82-2.37)	Depositor EDS
$R_{merge}$	0.06	Depositor
$R_{sym}$	0.05	Depositor
$\langle I/\sigma(I) \rangle$ <sup>1</sup>	2.64 (at 2.37Å)	Xtriage
Refinement program	PHENIX 1.16_3549	Depositor
R, $R_{free}$	0.189 , 0.239 0.189 , 0.239	Depositor DCC
$R_{free}$ test set	6789 reflections (4.97%)	wwPDB-VP
Wilson B-factor (Å <sup>2</sup> )	32.2	Xtriage
Anisotropy	0.123	Xtriage
Bulk solvent $k_{sol}$ (e/Å <sup>3</sup> ), $B_{sol}$ (Å <sup>2</sup> )	0.29 , 33.5	EDS
L-test for twinning <sup>2</sup>	$\langle  L  \rangle = 0.49$ , $\langle L^2 \rangle = 0.33$	Xtriage
Estimated twinning fraction	0.026 for h,-k,-l	Xtriage
$F_o, F_c$ correlation	0.94	EDS
Total number of atoms	28784	wwPDB-VP
Average B, all atoms (Å <sup>2</sup> )	35.0	wwPDB-VP

Xtriage's analysis on translational NCS is as follows: *The analyses of the Patterson function reveals a significant off-origin peak that is 65.25 % of the origin peak, indicating pseudo-translational symmetry. The chance of finding a peak of this or larger height randomly in a structure without pseudo-translational symmetry is equal to 7.2939e-06. The detected translational NCS is most likely also responsible for the elevated intensity ratio.*

<sup>1</sup>Intensities estimated from amplitudes.

<sup>2</sup>Theoretical values of  $\langle |L| \rangle$ ,  $\langle L^2 \rangle$  for acentric reflections are 0.5, 0.333 respectively for untwinned datasets, and 0.375, 0.2 for perfectly twinned datasets.

## 5 Model quality [i](#)

### 5.1 Standard geometry [i](#)

Bond lengths and bond angles in the following residue types are not validated in this section: FAD, NAP

The Z score for a bond length (or angle) is the number of standard deviations the observed value is removed from the expected value. A bond length (or angle) with  $|Z| > 5$  is considered an outlier worth inspection. RMSZ is the root-mean-square of all Z scores of the bond lengths (or angles).

Mol	Chain	Bond lengths		Bond angles	
		RMSZ	# Z  >5	RMSZ	# Z  >5
1	A	0.25	0/3439	0.42	0/4672
1	B	0.25	0/3425	0.42	0/4653
1	C	0.26	0/3425	0.42	0/4653
1	D	0.25	0/3431	0.42	0/4661
1	E	0.25	0/3431	0.43	0/4661
1	F	0.25	0/3425	0.42	0/4653
1	G	0.25	0/3425	0.42	0/4653
1	H	0.25	0/3456	0.42	0/4696
All	All	0.25	0/27457	0.42	0/37302

There are no bond length outliers.

There are no bond angle outliers.

There are no chirality outliers.

There are no planarity outliers.

### 5.2 Too-close contacts [i](#)

In the following table, the Non-H and H(model) columns list the number of non-hydrogen atoms and hydrogen atoms in the chain respectively. The H(added) column lists the number of hydrogen atoms added and optimized by MolProbity. The Clashes column lists the number of clashes within the asymmetric unit, whereas Symm-Clashes lists symmetry-related clashes.

Mol	Chain	Non-H	H(model)	H(added)	Clashes	Symm-Clashes
1	A	3353	0	3234	24	0
1	B	3340	0	3221	23	0
1	C	3340	0	3221	25	0
1	D	3346	0	3226	15	0
1	E	3346	0	3226	19	0

*Continued on next page...*

*Continued from previous page...*

Mol	Chain	Non-H	H(model)	H(added)	Clashes	Symm-Clashes
1	F	3340	0	3221	26	0
1	G	3340	0	3221	24	0
1	H	3370	0	3245	22	0
2	A	53	0	31	0	0
2	B	53	0	31	0	0
2	C	53	0	31	0	0
2	D	53	0	31	0	0
2	E	53	0	31	0	0
2	F	53	0	31	1	0
2	G	53	0	31	0	0
2	H	53	0	31	0	0
3	A	48	0	23	5	0
3	B	48	0	23	2	0
3	C	48	0	23	1	0
3	D	48	0	23	2	0
3	E	48	0	23	3	0
3	F	48	0	23	2	0
3	G	48	0	23	2	0
3	H	48	0	23	2	0
4	A	197	0	0	0	0
4	B	157	0	0	2	0
4	C	160	0	0	0	0
4	D	158	0	0	0	0
4	E	142	0	0	1	0
4	F	132	0	0	1	0
4	G	135	0	0	0	0
4	H	120	0	0	0	0
All	All	28784	0	26247	167	0

The all-atom clashscore is defined as the number of clashes found per 1000 atoms (including hydrogen atoms). The all-atom clashscore for this structure is 3.

The worst 5 of 167 close contacts within the same asymmetric unit are listed below, sorted by their clash magnitude.

Atom-1	Atom-2	Interatomic distance (Å)	Clash overlap (Å)
1:F:317:GLN:OE1	1:F:320:GLN:N	2.04	0.90
1:H:169:ASP:HB2	1:H:306:HIS:HB3	1.72	0.72
1:H:190:SER:HB3	1:H:329:GLN:H	1.55	0.71
1:C:66:SER:HB2	1:C:393:GLY:HA2	1.74	0.70
1:D:317:GLN:OE1	1:D:320:GLN:N	2.14	0.68

There are no symmetry-related clashes.

## 5.3 Torsion angles [i](#)

### 5.3.1 Protein backbone [i](#)

In the following table, the Percentiles column shows the percent Ramachandran outliers of the chain as a percentile score with respect to all X-ray entries followed by that with respect to entries of similar resolution.

The Analysed column shows the number of residues for which the backbone conformation was analysed, and the total number of residues.

Mol	Chain	Analysed	Favoured	Allowed	Outliers	Percentiles	
1	A	416/425 (98%)	402 (97%)	13 (3%)	1 (0%)	47	56
1	B	414/425 (97%)	396 (96%)	16 (4%)	2 (0%)	29	32
1	C	414/425 (97%)	394 (95%)	19 (5%)	1 (0%)	47	56
1	D	415/425 (98%)	396 (95%)	18 (4%)	1 (0%)	47	56
1	E	415/425 (98%)	399 (96%)	16 (4%)	0	100	100
1	F	414/425 (97%)	399 (96%)	14 (3%)	1 (0%)	47	56
1	G	414/425 (97%)	393 (95%)	21 (5%)	0	100	100
1	H	418/425 (98%)	398 (95%)	19 (4%)	1 (0%)	47	56
All	All	3320/3400 (98%)	3177 (96%)	136 (4%)	7 (0%)	47	56

5 of 7 Ramachandran outliers are listed below:

Mol	Chain	Res	Type
1	B	308	ASN
1	A	67	ASP
1	F	67	ASP
1	H	67	ASP
1	B	267	PHE

### 5.3.2 Protein sidechains [i](#)

In the following table, the Percentiles column shows the percent sidechain outliers of the chain as a percentile score with respect to all X-ray entries followed by that with respect to entries of similar resolution.

The Analysed column shows the number of residues for which the sidechain conformation was analysed, and the total number of residues.

Mol	Chain	Analysed	Rotameric	Outliers	Percentiles	
1	A	361/367 (98%)	357 (99%)	4 (1%)	73	84
1	B	359/367 (98%)	358 (100%)	1 (0%)	92	96
1	C	359/367 (98%)	355 (99%)	4 (1%)	73	84
1	D	360/367 (98%)	355 (99%)	5 (1%)	67	78
1	E	360/367 (98%)	350 (97%)	10 (3%)	43	53
1	F	359/367 (98%)	358 (100%)	1 (0%)	92	96
1	G	359/367 (98%)	350 (98%)	9 (2%)	47	58
1	H	363/367 (99%)	355 (98%)	8 (2%)	52	63
All	All	2880/2936 (98%)	2838 (98%)	42 (2%)	65	76

5 of 42 residues with a non-rotameric sidechain are listed below:

Mol	Chain	Res	Type
1	G	183	SER
1	H	134	ASP
1	G	262	GLU
1	G	317	GLN
1	H	196	SER

Sometimes sidechains can be flipped to improve hydrogen bonding and reduce clashes. All (5) such sidechains are listed below:

Mol	Chain	Res	Type
1	C	308	ASN
1	D	308	ASN
1	E	150	HIS
1	E	180	GLN
1	H	308	ASN

### 5.3.3 RNA ⓘ

There are no RNA molecules in this entry.

## 5.4 Non-standard residues in protein, DNA, RNA chains ⓘ

There are no non-standard protein/DNA/RNA residues in this entry.

## 5.5 Carbohydrates ⓘ

There are no monosaccharides in this entry.

## 5.6 Ligand geometry ⓘ

16 ligands are modelled in this entry.

In the following table, the Counts columns list the number of bonds (or angles) for which Mogul statistics could be retrieved, the number of bonds (or angles) that are observed in the model and the number of bonds (or angles) that are defined in the Chemical Component Dictionary. The Link column lists molecule types, if any, to which the group is linked. The Z score for a bond length (or angle) is the number of standard deviations the observed value is removed from the expected value. A bond length (or angle) with  $|Z| > 2$  is considered an outlier worth inspection. RMSZ is the root-mean-square of all Z scores of the bond lengths (or angles).

Mol	Type	Chain	Res	Link	Bond lengths			Bond angles		
					Counts	RMSZ	# Z  > 2	Counts	RMSZ	# Z  > 2
3	NAP	G	502	-	45,52,52	4.49	15 (33%)	56,80,80	1.93	7 (12%)
3	NAP	C	502	-	45,52,52	4.48	15 (33%)	56,80,80	1.90	6 (10%)
2	FAD	F	501	-	51,58,58	1.22	5 (9%)	60,89,89	2.22	7 (11%)
3	NAP	A	502	-	45,52,52	4.49	15 (33%)	56,80,80	1.89	8 (14%)
2	FAD	C	501	-	51,58,58	1.22	6 (11%)	60,89,89	2.20	7 (11%)
2	FAD	B	501	-	51,58,58	1.23	6 (11%)	60,89,89	2.21	7 (11%)
3	NAP	D	502	-	45,52,52	4.50	15 (33%)	56,80,80	1.92	8 (14%)
3	NAP	F	502	-	45,52,52	4.47	14 (31%)	56,80,80	1.89	6 (10%)
3	NAP	B	502	-	45,52,52	4.47	15 (33%)	56,80,80	1.93	7 (12%)
3	NAP	H	502	-	45,52,52	4.48	15 (33%)	56,80,80	1.88	8 (14%)
2	FAD	G	501	-	51,58,58	1.23	6 (11%)	60,89,89	2.22	7 (11%)
3	NAP	E	502	-	45,52,52	4.49	15 (33%)	56,80,80	1.89	5 (8%)
2	FAD	H	501	-	51,58,58	1.22	6 (11%)	60,89,89	2.22	7 (11%)
2	FAD	E	501	-	51,58,58	1.22	6 (11%)	60,89,89	2.21	7 (11%)
2	FAD	A	501	-	51,58,58	1.20	5 (9%)	60,89,89	2.22	7 (11%)
2	FAD	D	501	-	51,58,58	1.22	5 (9%)	60,89,89	2.21	7 (11%)

In the following table, the Chirals column lists the number of chiral outliers, the number of chiral centers analysed, the number of these observed in the model and the number defined in the Chemical Component Dictionary. Similar counts are reported in the Torsion and Rings columns. '-' means no outliers of that kind were identified.

Mol	Type	Chain	Res	Link	Chirals	Torsions	Rings
3	NAP	G	502	-	-	7/31/67/67	0/5/5/5
3	NAP	C	502	-	-	7/31/67/67	0/5/5/5
2	FAD	F	501	-	-	3/30/50/50	0/6/6/6
3	NAP	A	502	-	-	11/31/67/67	0/5/5/5
2	FAD	C	501	-	-	5/30/50/50	0/6/6/6
2	FAD	B	501	-	-	3/30/50/50	0/6/6/6
3	NAP	D	502	-	-	9/31/67/67	0/5/5/5
3	NAP	F	502	-	-	10/31/67/67	0/5/5/5
3	NAP	B	502	-	-	7/31/67/67	0/5/5/5
3	NAP	H	502	-	-	8/31/67/67	0/5/5/5
2	FAD	G	501	-	-	5/30/50/50	0/6/6/6
3	NAP	E	502	-	-	12/31/67/67	0/5/5/5
2	FAD	H	501	-	-	3/30/50/50	0/6/6/6
2	FAD	E	501	-	-	7/30/50/50	0/6/6/6
2	FAD	A	501	-	-	5/30/50/50	0/6/6/6
2	FAD	D	501	-	-	5/30/50/50	0/6/6/6

The worst 5 of 164 bond length outliers are listed below:

Mol	Chain	Res	Type	Atoms	Z	Observed(Å)	Ideal(Å)
3	D	502	NAP	O4D-C1D	15.42	1.62	1.41
3	A	502	NAP	O4D-C1D	15.39	1.62	1.41
3	G	502	NAP	O4D-C1D	15.35	1.62	1.41
3	E	502	NAP	O4D-C1D	15.34	1.62	1.41
3	B	502	NAP	O4D-C1D	15.32	1.62	1.41

The worst 5 of 111 bond angle outliers are listed below:

Mol	Chain	Res	Type	Atoms	Z	Observed(°)	Ideal(°)
2	A	501	FAD	C4-N3-C2	13.07	126.18	115.14
2	F	501	FAD	C4-N3-C2	13.05	126.16	115.14
2	G	501	FAD	C4-N3-C2	13.03	126.14	115.14
2	H	501	FAD	C4-N3-C2	13.02	126.14	115.14
2	E	501	FAD	C4-N3-C2	12.98	126.10	115.14

There are no chirality outliers.

5 of 107 torsion outliers are listed below:

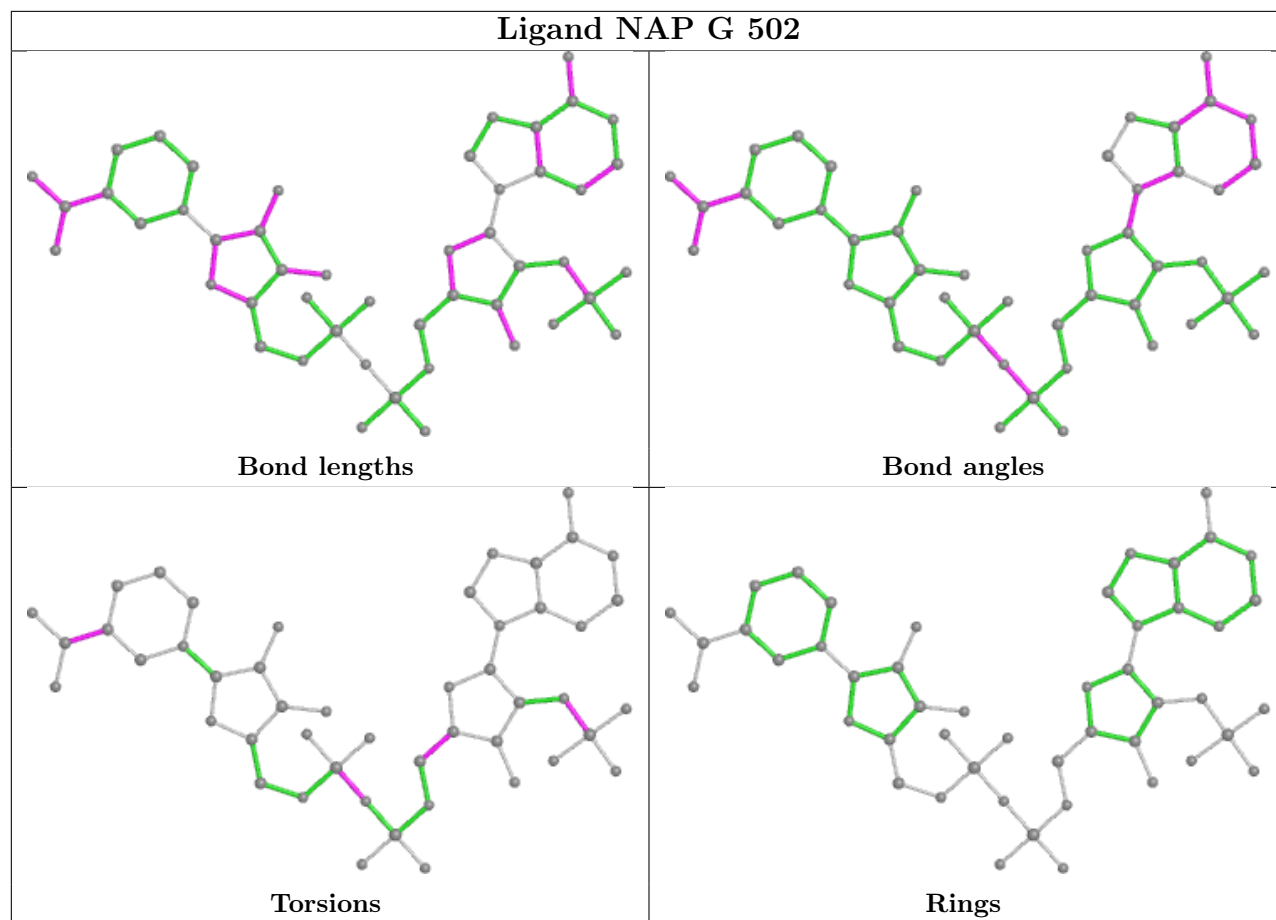
Mol	Chain	Res	Type	Atoms
2	A	501	FAD	C5B-O5B-PA-O2A
2	B	501	FAD	O4B-C4B-C5B-O5B
2	B	501	FAD	PA-O3P-P-O5'
2	C	501	FAD	C5B-O5B-PA-O2A
2	D	501	FAD	C5B-O5B-PA-O2A

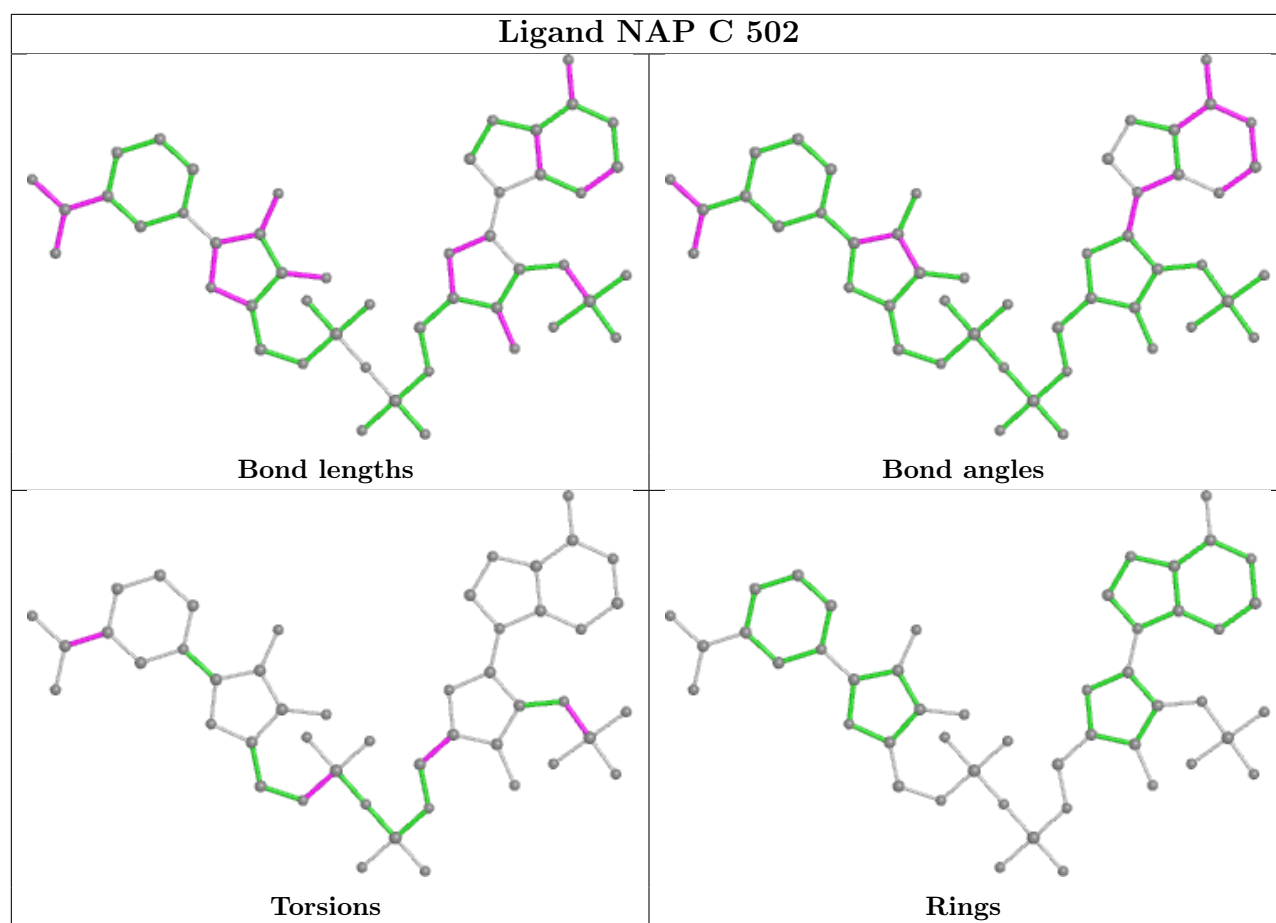
There are no ring outliers.

9 monomers are involved in 20 short contacts:

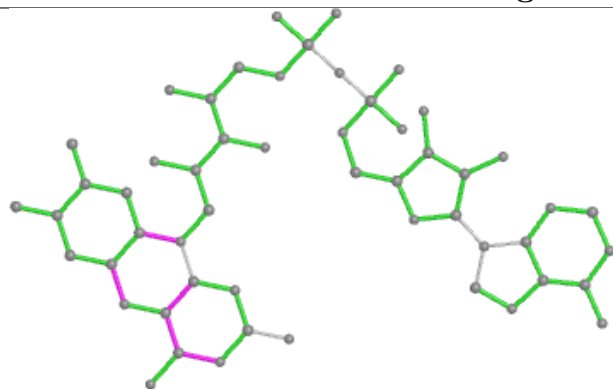
Mol	Chain	Res	Type	Clashes	Symm-Clashes
3	G	502	NAP	2	0
3	C	502	NAP	1	0
2	F	501	FAD	1	0
3	A	502	NAP	5	0
3	D	502	NAP	2	0
3	F	502	NAP	2	0
3	B	502	NAP	2	0
3	H	502	NAP	2	0
3	E	502	NAP	3	0

The following is a two-dimensional graphical depiction of Mogul quality analysis of bond lengths, bond angles, torsion angles, and ring geometry for all instances of the Ligand of Interest. In addition, ligands with molecular weight > 250 and outliers as shown on the validation Tables will also be included. For torsion angles, if less than 5% of the Mogul distribution of torsion angles is within 10 degrees of the torsion angle in question, then that torsion angle is considered an outlier. Any bond that is central to one or more torsion angles identified as an outlier by Mogul will be highlighted in the graph. For rings, the root-mean-square deviation (RMSD) between the ring in question and similar rings identified by Mogul is calculated over all ring torsion angles. If the average RMSD is greater than 60 degrees and the minimal RMSD between the ring in question and any Mogul-identified rings is also greater than 60 degrees, then that ring is considered an outlier. The outliers are highlighted in purple. The color gray indicates Mogul did not find sufficient equivalents in the CSD to analyse the geometry.

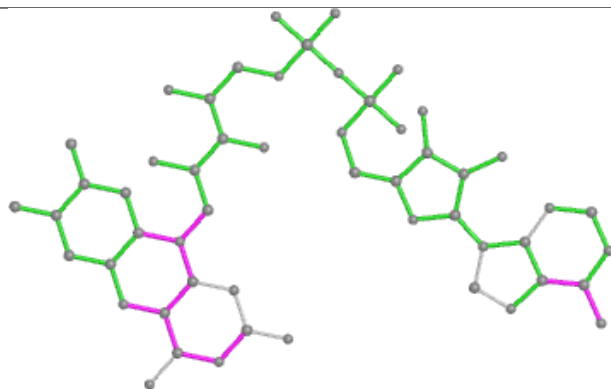




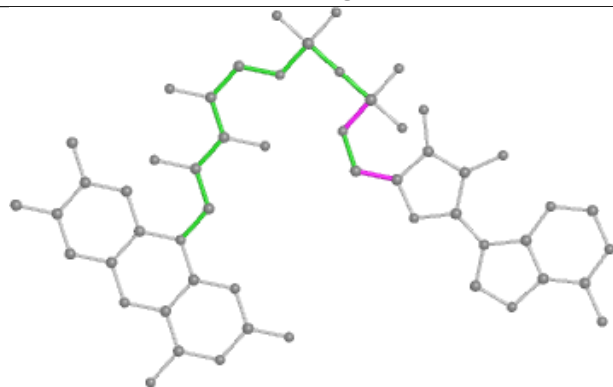
## Ligand FAD F 501



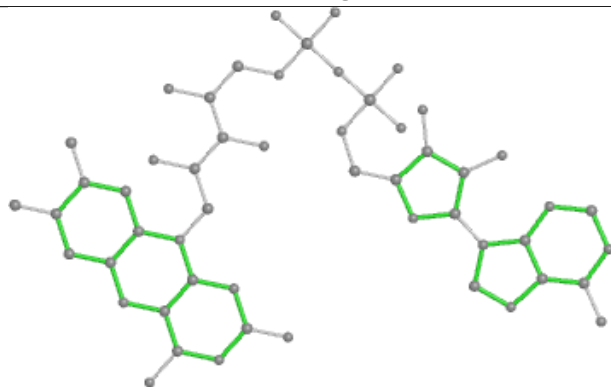
Bond lengths



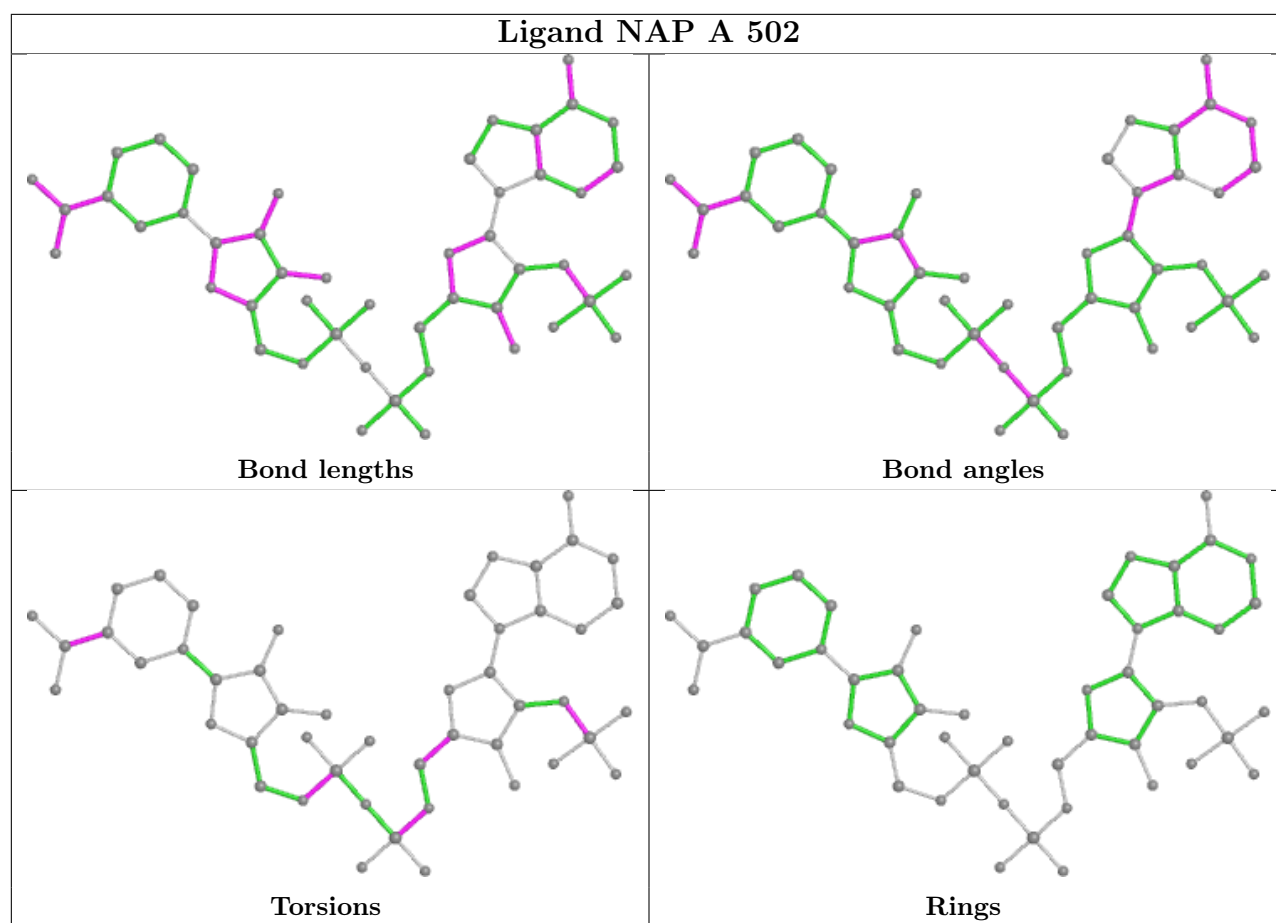
Bond angles

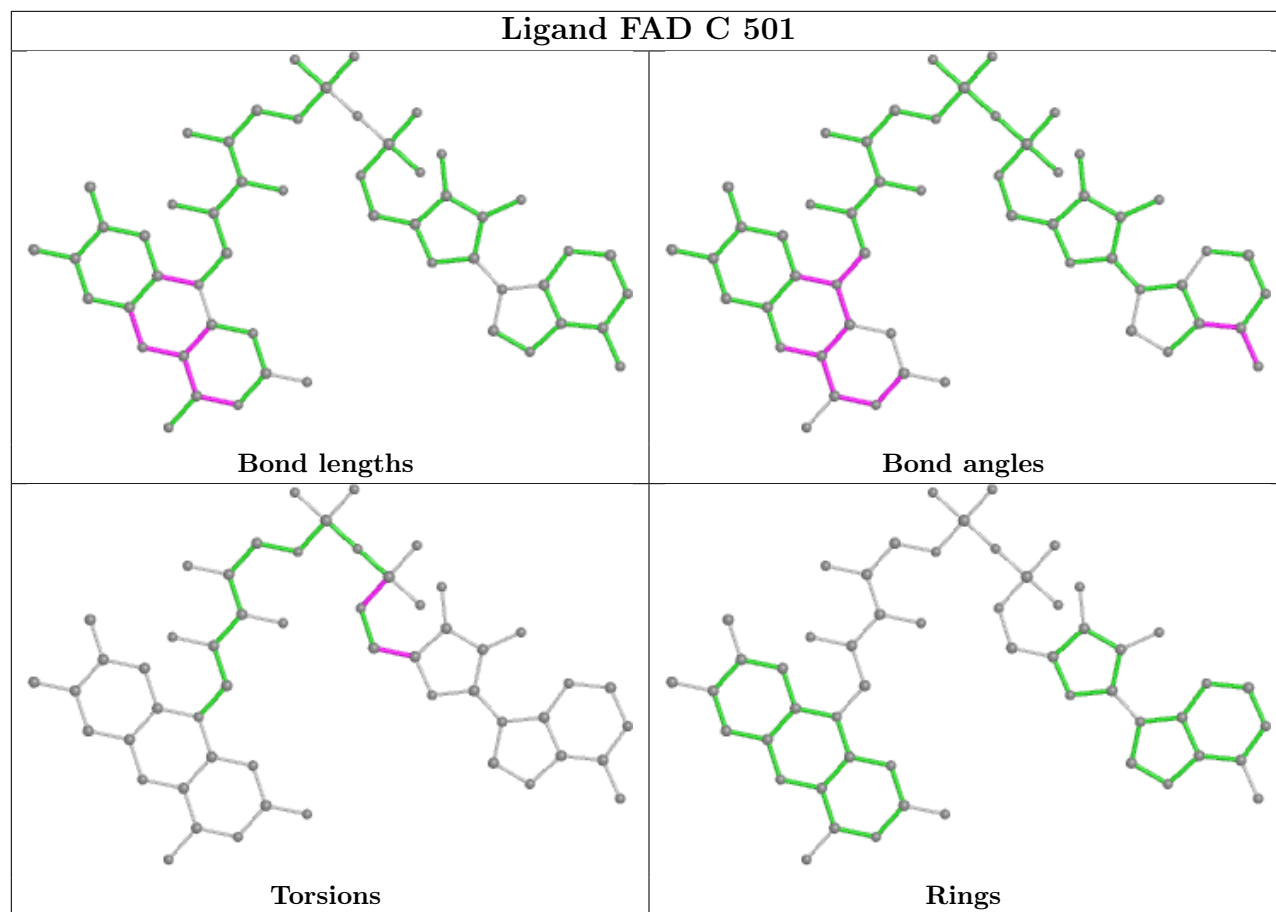


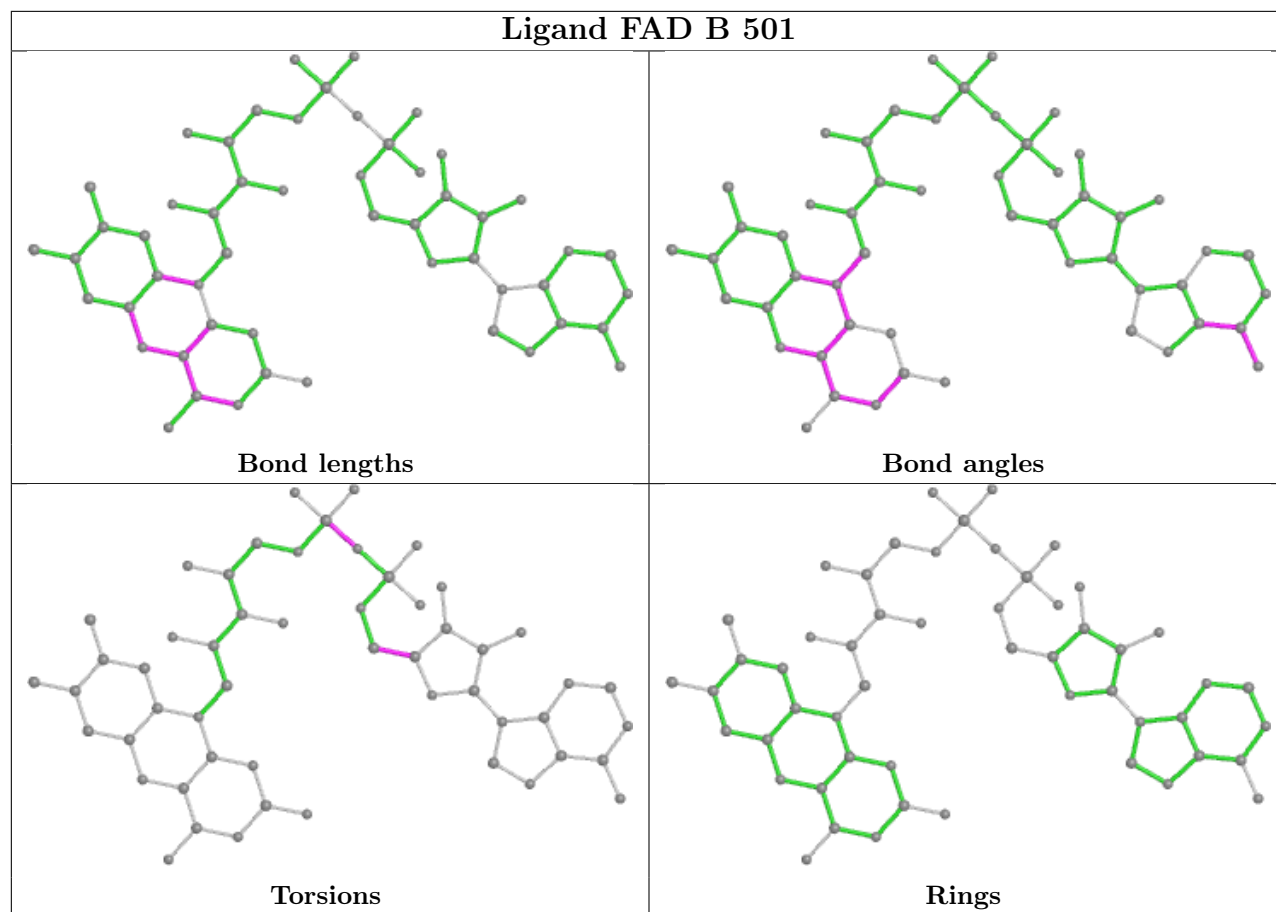
Torsions

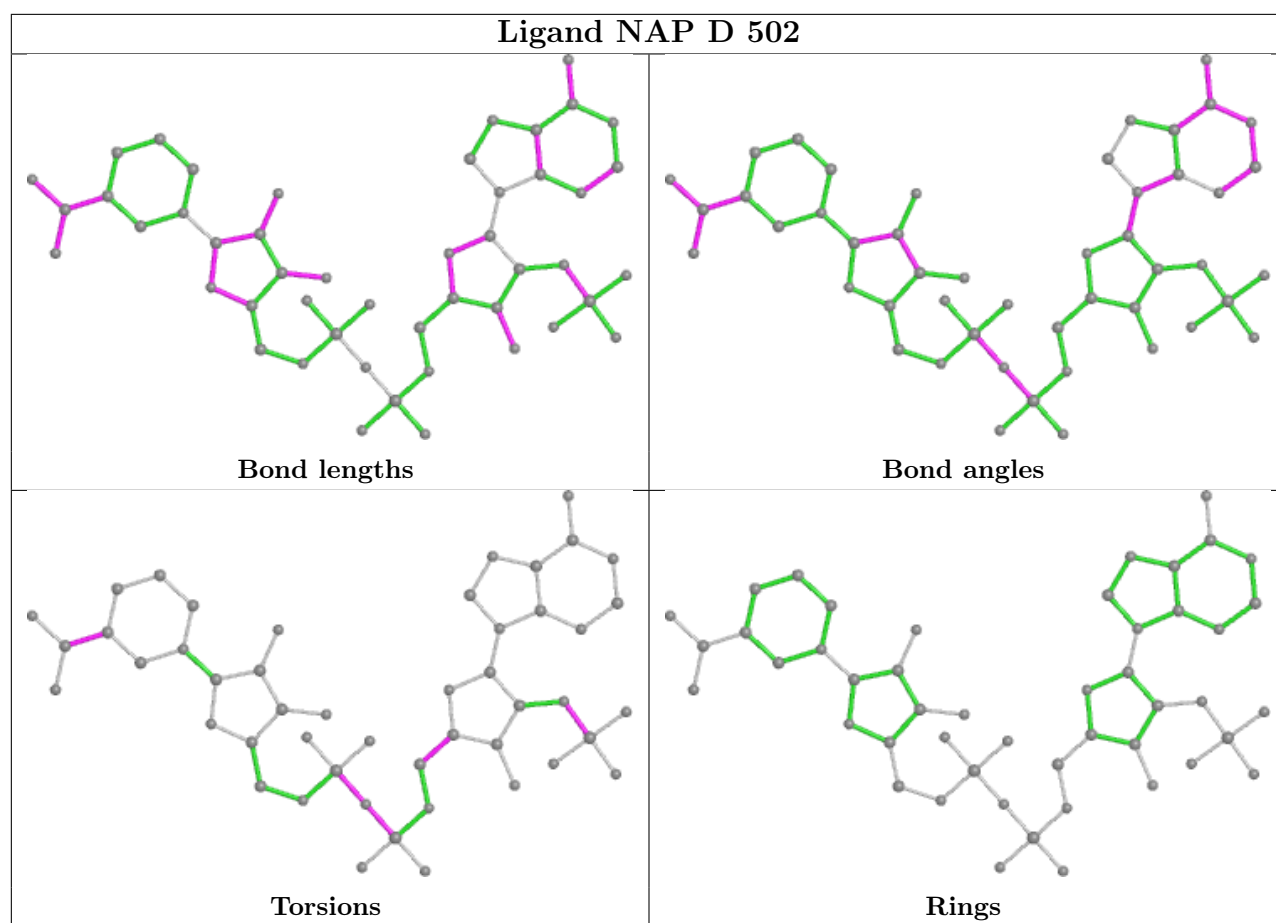


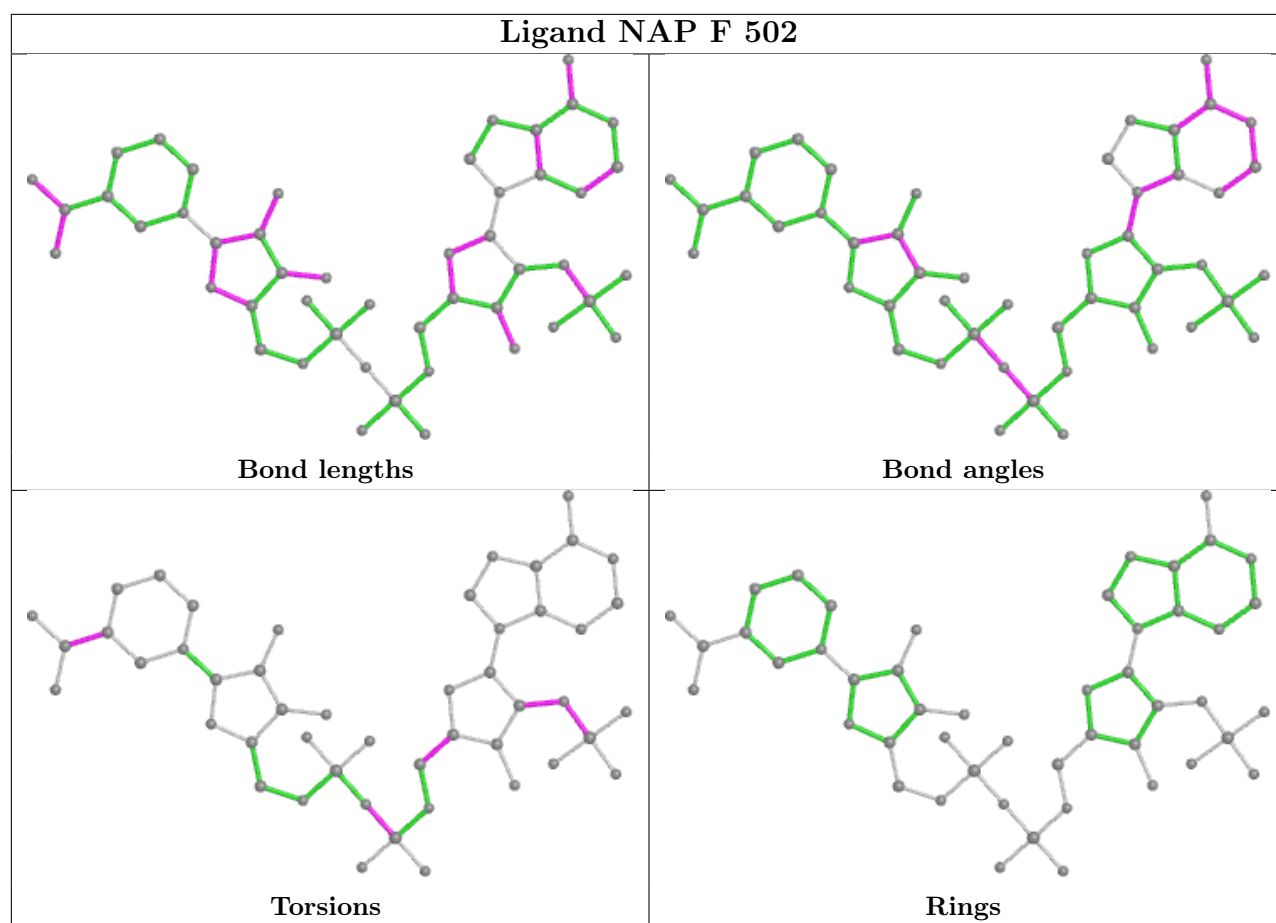
Rings

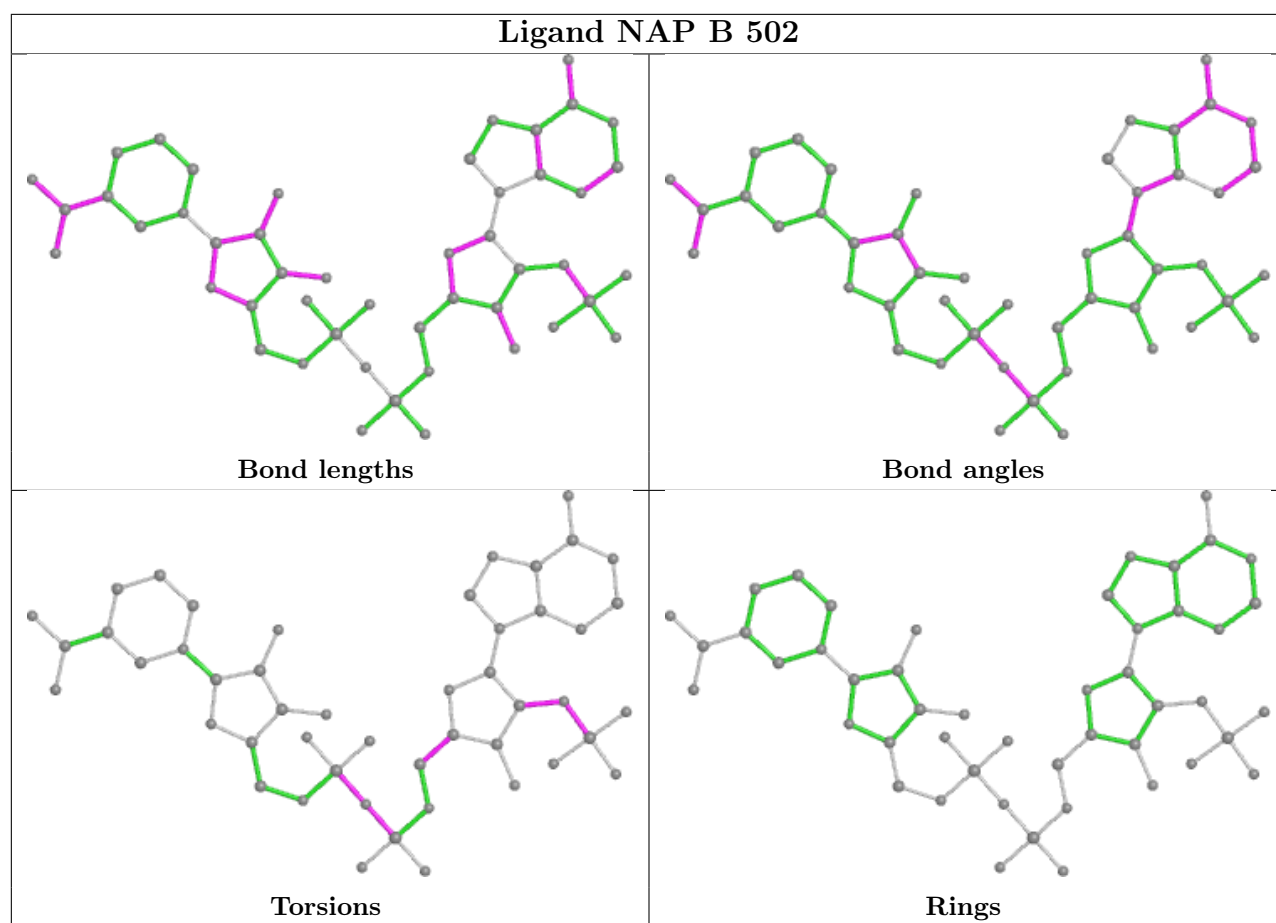


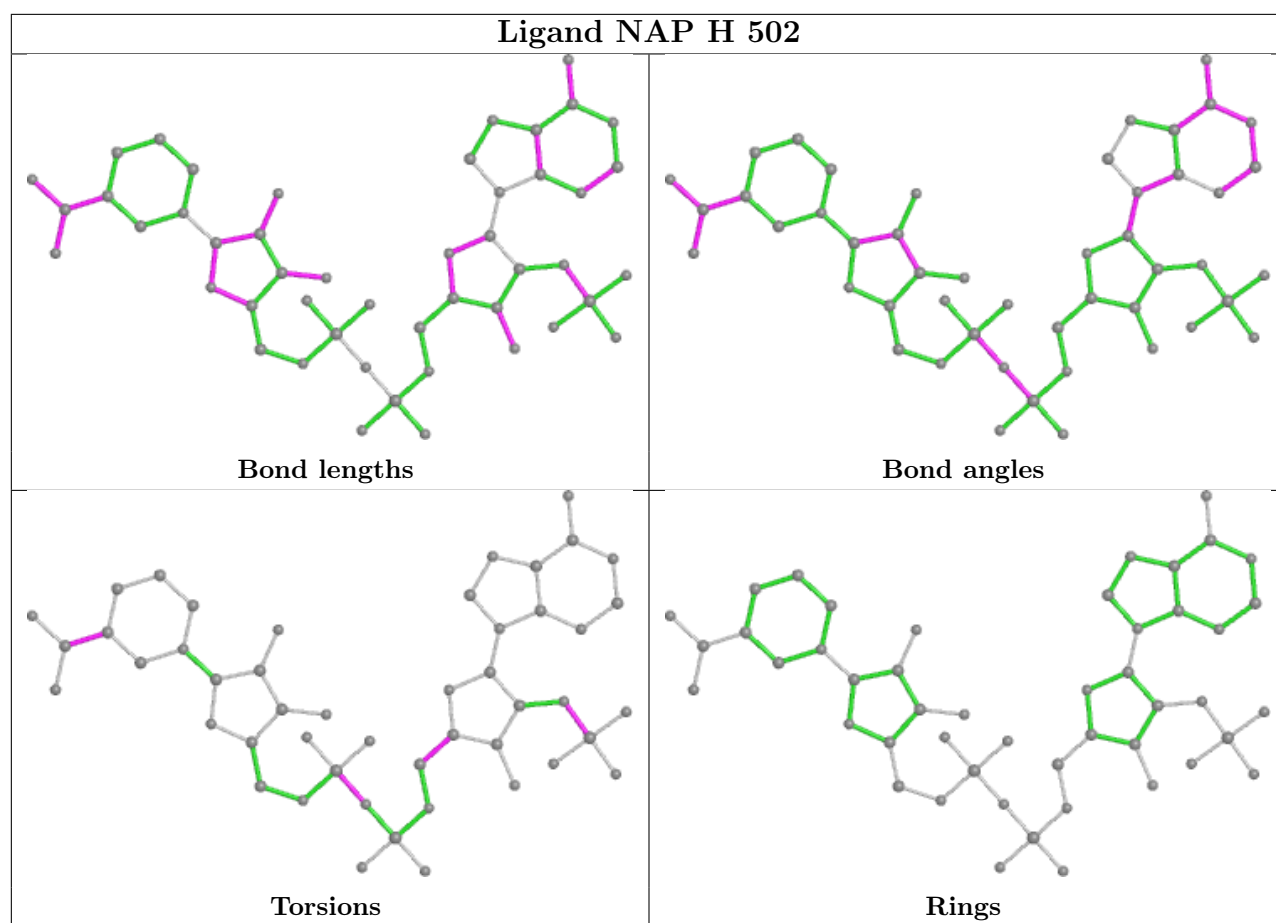


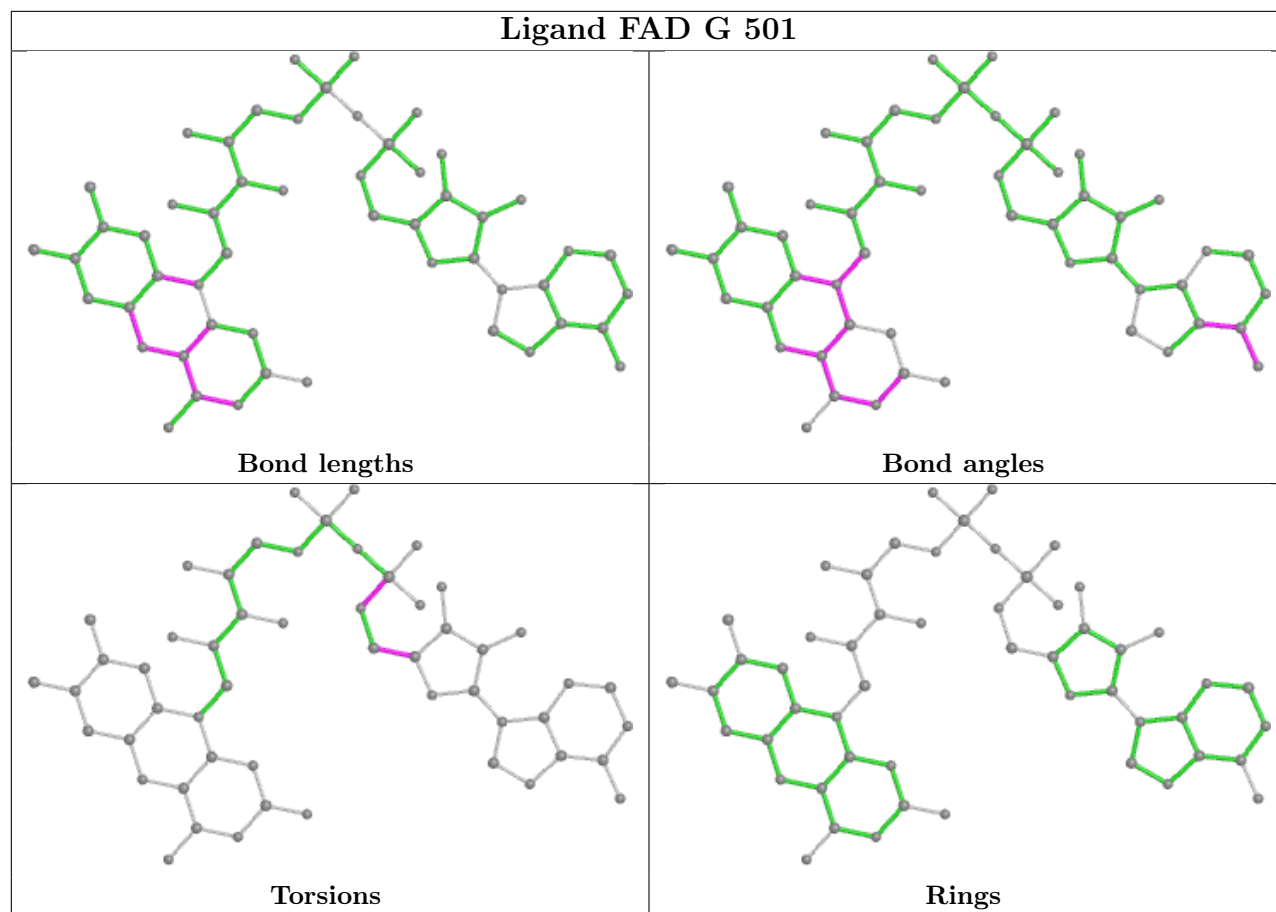


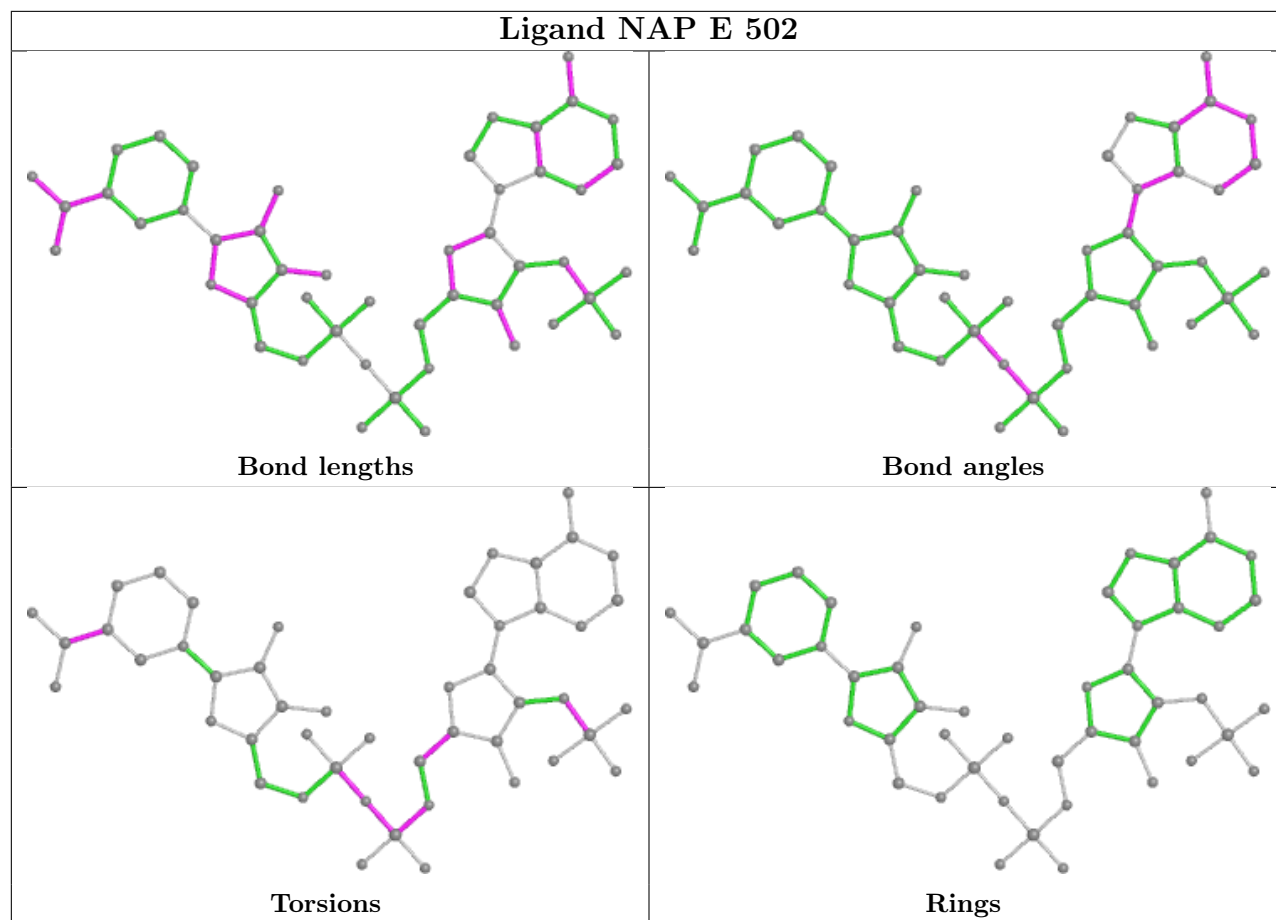


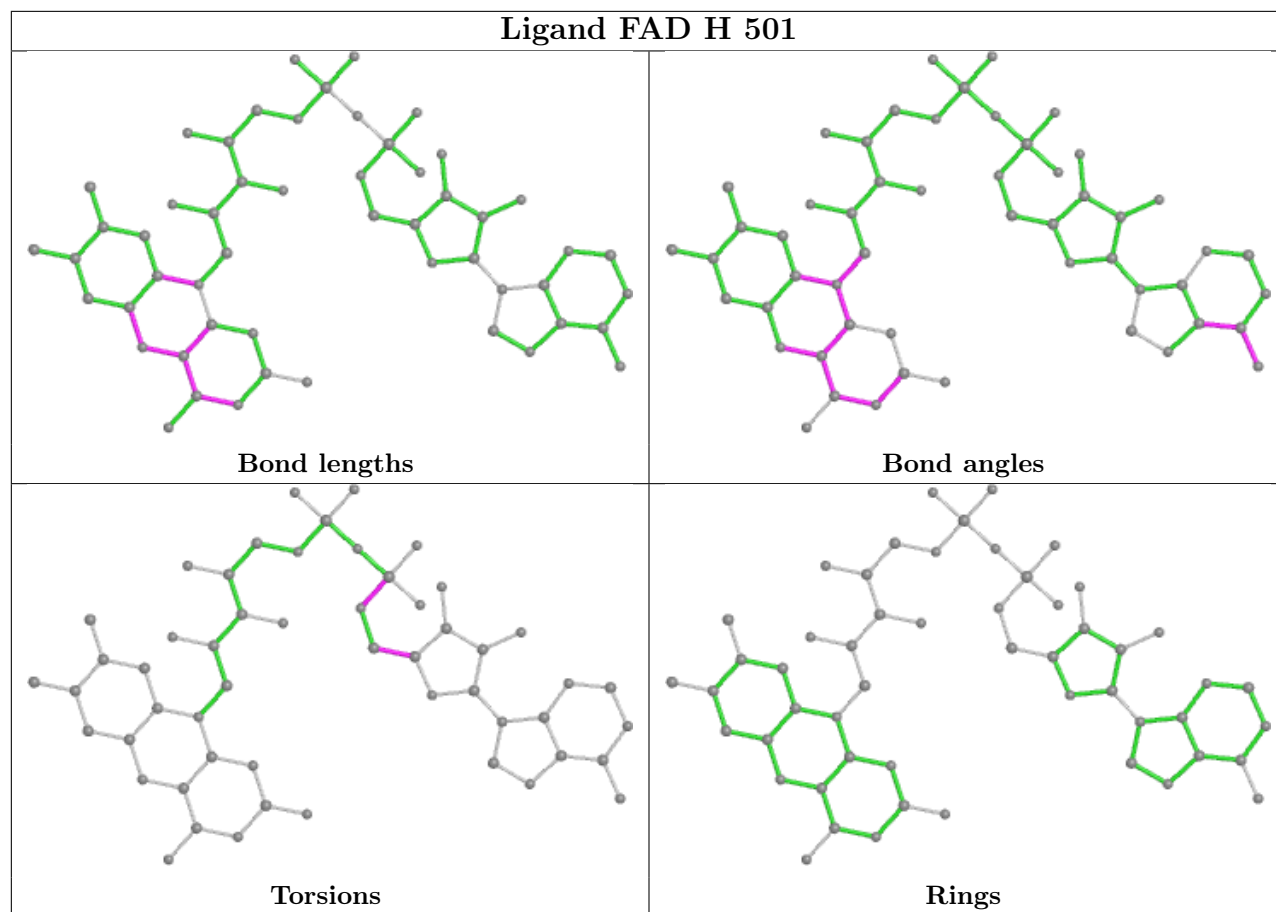


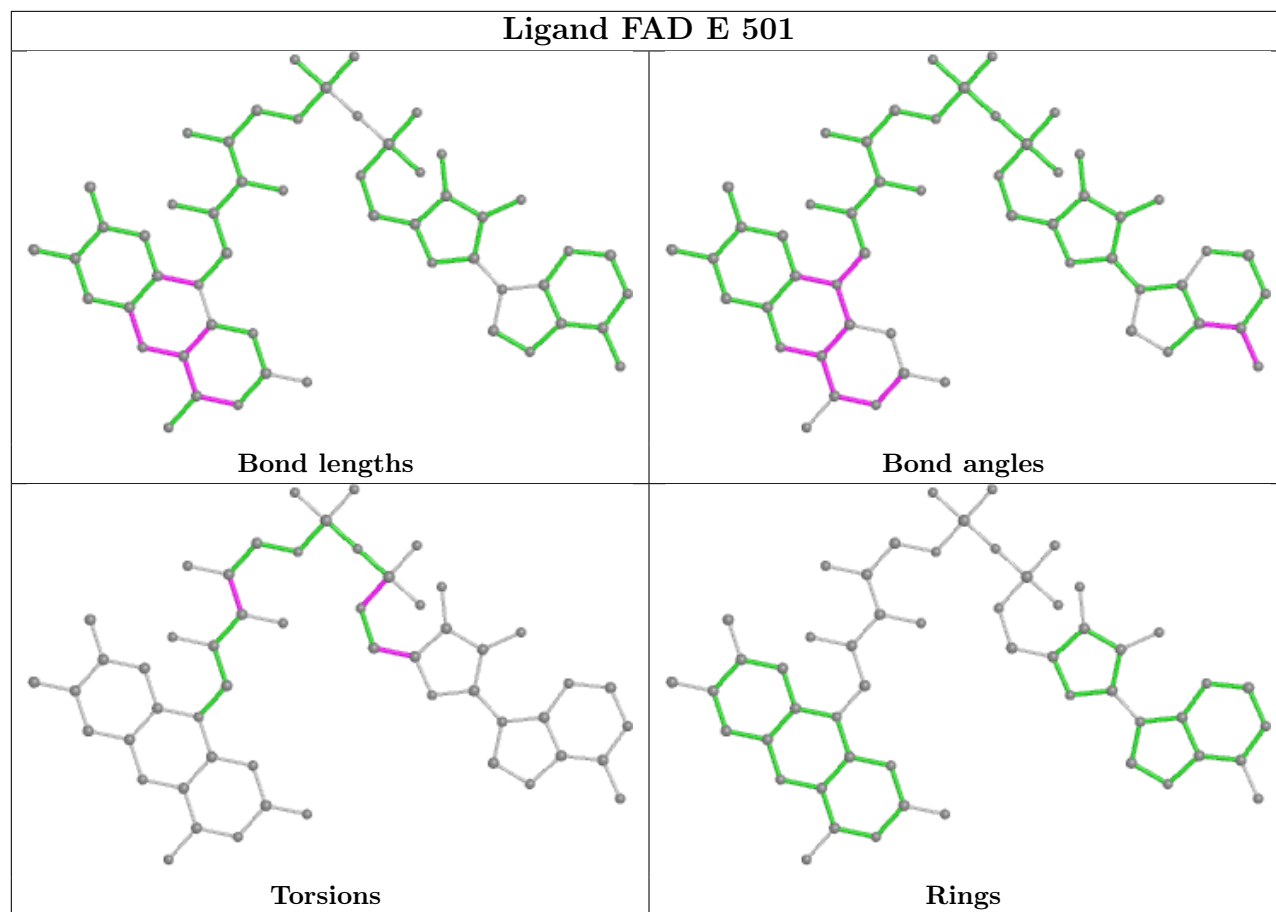


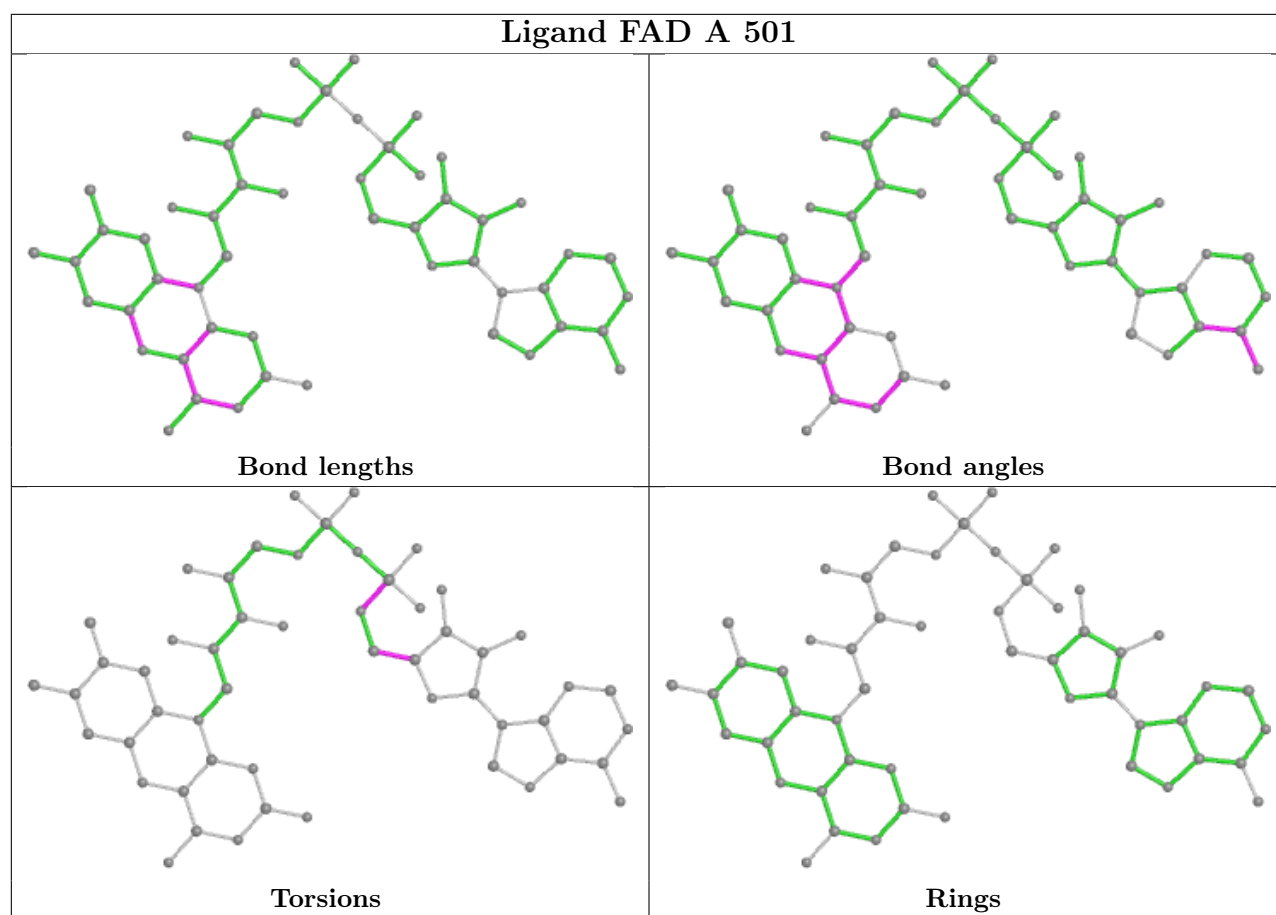


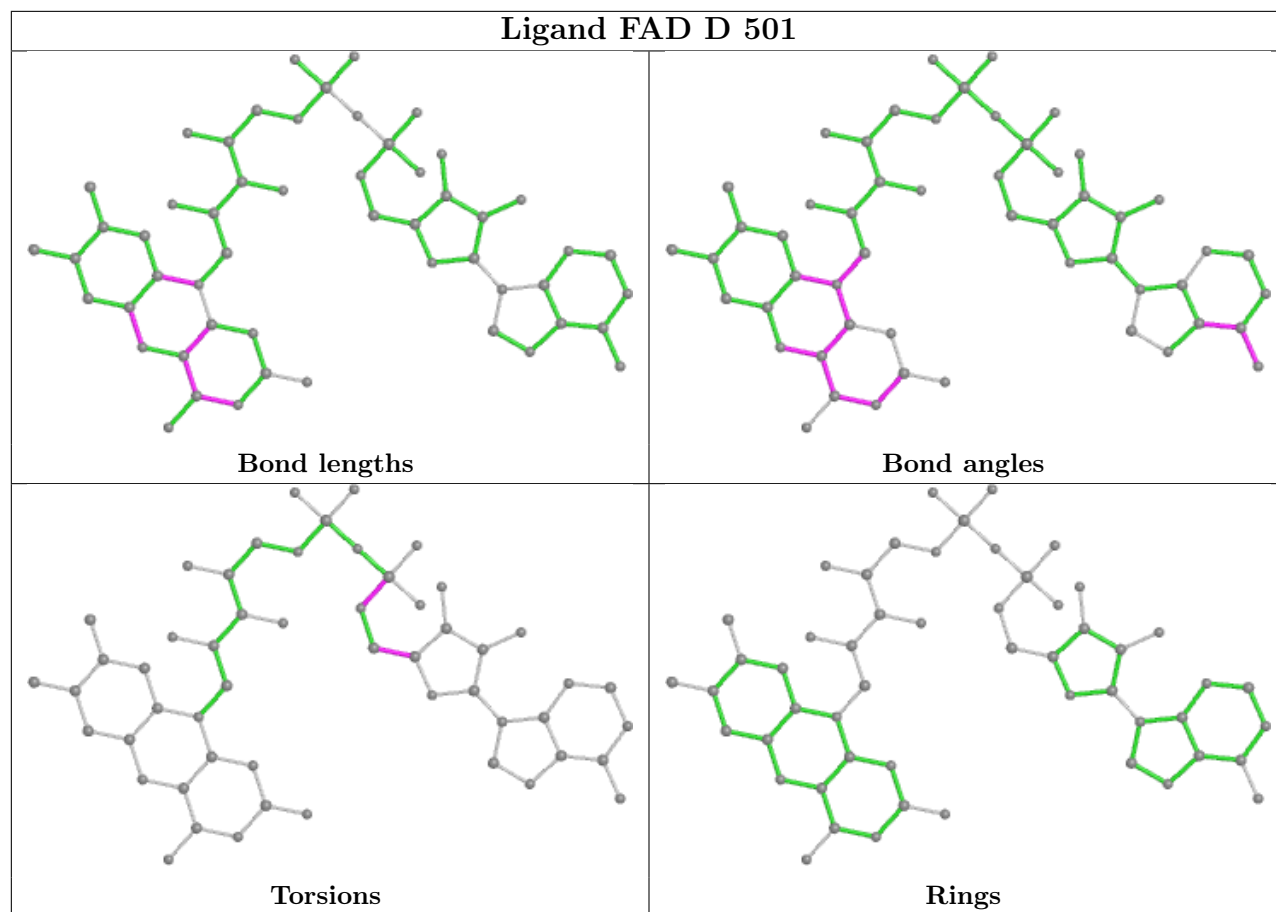












## 5.7 Other polymers [i](#)

There are no such residues in this entry.

## 5.8 Polymer linkage issues [i](#)

There are no chain breaks in this entry.

## 6 Fit of model and data [i](#)

### 6.1 Protein, DNA and RNA chains [i](#)

In the following table, the column labelled ‘#RSRZ > 2’ contains the number (and percentage) of RSRZ outliers, followed by percent RSRZ outliers for the chain as percentile scores relative to all X-ray entries and entries of similar resolution. The OWAB column contains the minimum, median, 95<sup>th</sup> percentile and maximum values of the occupancy-weighted average B-factor per residue. The column labelled ‘Q < 0.9’ lists the number of (and percentage) of residues with an average occupancy less than 0.9.

Mol	Chain	Analysed	<RSRZ>	#RSRZ > 2	OWAB(Å <sup>2</sup> )	Q < 0.9
1	A	418/425 (98%)	-0.28	1 (0%) 95 97	17, 30, 44, 76	0
1	B	416/425 (97%)	-0.25	3 (0%) 87 92	20, 31, 49, 61	0
1	C	416/425 (97%)	-0.17	2 (0%) 91 95	20, 32, 51, 67	0
1	D	417/425 (98%)	-0.21	2 (0%) 91 95	22, 35, 50, 62	0
1	E	417/425 (98%)	-0.17	5 (1%) 79 86	19, 32, 51, 67	0
1	F	416/425 (97%)	-0.02	9 (2%) 62 72	23, 39, 56, 76	0
1	G	416/425 (97%)	-0.02	7 (1%) 70 78	23, 35, 53, 73	0
1	H	420/425 (98%)	-0.16	3 (0%) 87 92	21, 37, 58, 72	0
All	All	3336/3400 (98%)	-0.16	32 (0%) 82 88	17, 34, 52, 76	0

The worst 5 of 32 RSRZ outliers are listed below:

Mol	Chain	Res	Type	RSRZ
1	F	425	VAL	4.6
1	H	425	VAL	4.0
1	G	142	ALA	3.6
1	G	189	GLU	3.5
1	B	307	GLU	3.3

### 6.2 Non-standard residues in protein, DNA, RNA chains [i](#)

There are no non-standard protein/DNA/RNA residues in this entry.

### 6.3 Carbohydrates [i](#)

There are no monosaccharides in this entry.

## 6.4 Ligands ⓘ

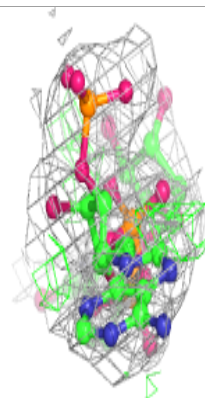
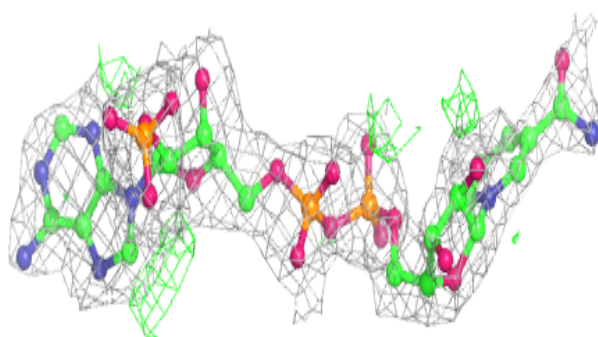
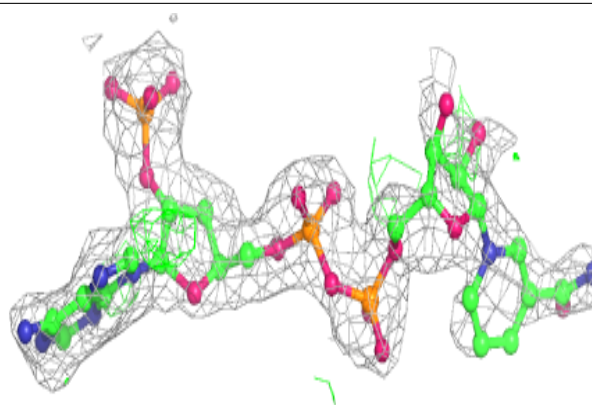
In the following table, the Atoms column lists the number of modelled atoms in the group and the number defined in the chemical component dictionary. The B-factors column lists the minimum, median, 95<sup>th</sup> percentile and maximum values of B factors of atoms in the group. The column labelled 'Q< 0.9' lists the number of atoms with occupancy less than 0.9.

Mol	Type	Chain	Res	Atoms	RSCC	RSR	B-factors(Å <sup>2</sup> )	Q<0.9
3	NAP	E	502	48/48	0.92	0.17	26,36,40,45	48
3	NAP	G	502	48/48	0.92	0.13	31,38,43,44	48
3	NAP	C	502	48/48	0.93	0.14	24,34,44,46	48
3	NAP	D	502	48/48	0.93	0.13	29,39,42,45	48
2	FAD	F	501	53/53	0.94	0.12	30,37,46,47	0
3	NAP	A	502	48/48	0.94	0.14	23,30,38,42	48
2	FAD	B	501	53/53	0.95	0.12	23,30,35,37	0
3	NAP	B	502	48/48	0.95	0.12	19,33,40,41	48
3	NAP	F	502	48/48	0.95	0.12	30,40,47,51	48
2	FAD	G	501	53/53	0.95	0.13	22,31,42,48	0
2	FAD	C	501	53/53	0.96	0.12	22,31,43,44	0
2	FAD	D	501	53/53	0.96	0.11	25,32,39,42	0
2	FAD	E	501	53/53	0.96	0.10	21,28,36,37	0
2	FAD	A	501	53/53	0.96	0.11	21,28,34,36	0
3	NAP	H	502	48/48	0.96	0.12	28,39,43,44	48
2	FAD	H	501	53/53	0.97	0.09	27,35,40,46	0

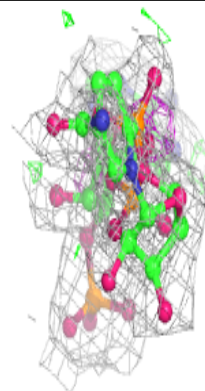
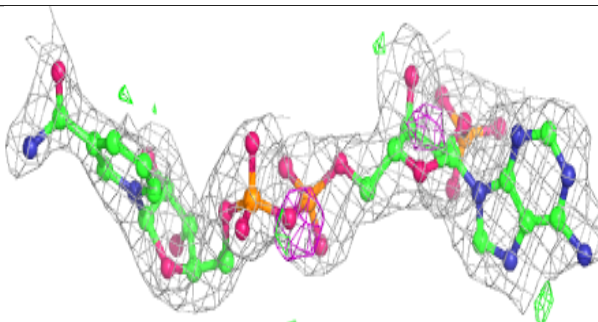
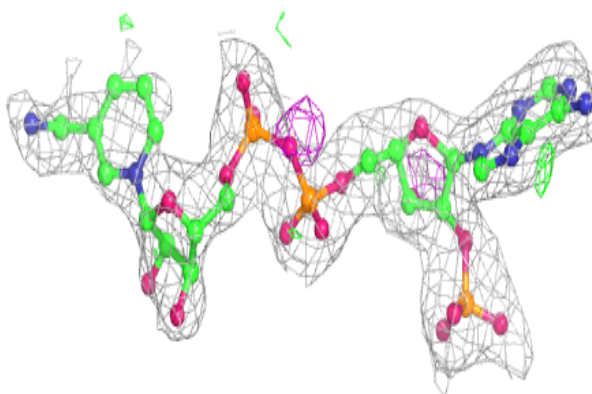
The following is a graphical depiction of the model fit to experimental electron density of all instances of the Ligand of Interest. In addition, ligands with molecular weight > 250 and outliers as shown on the geometry validation Tables will also be included. Each fit is shown from different orientation to approximate a three-dimensional view.

**Electron density around NAP E 502:**

$2mF_o-DF_c$  (at 0.7 rmsd) in gray  
 $mF_o-DF_c$  (at 3 rmsd) in purple (negative)  
and green (positive)

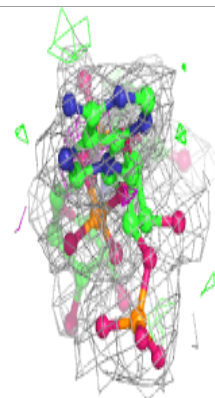
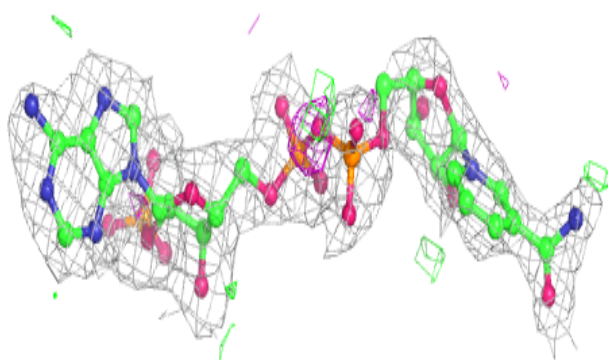
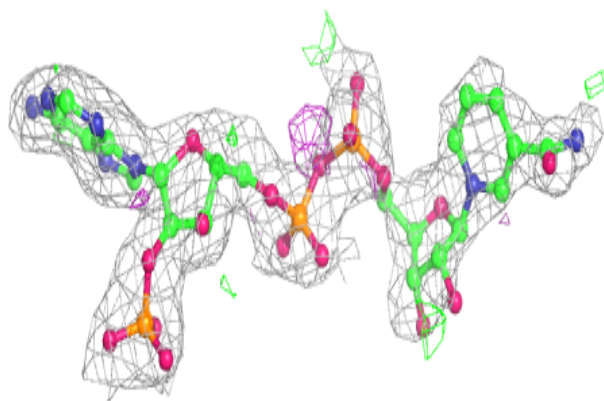
**Electron density around NAP G 502:**

$2mF_o-DF_c$  (at 0.7 rmsd) in gray  
 $mF_o-DF_c$  (at 3 rmsd) in purple (negative)  
and green (positive)

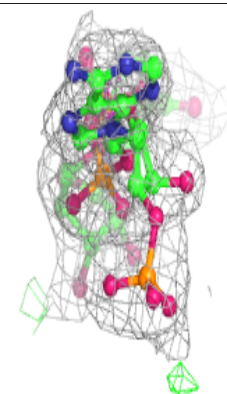
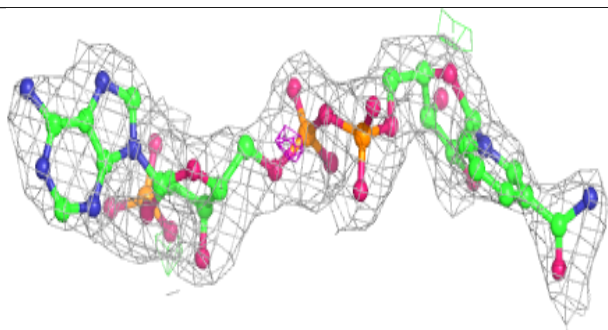
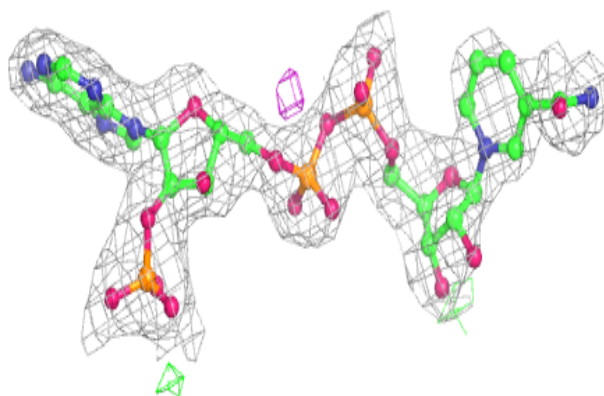


**Electron density around NAP C 502:**

$2mF_o-DF_c$  (at 0.7 rmsd) in gray  
 $mF_o-DF_c$  (at 3 rmsd) in purple (negative)  
and green (positive)

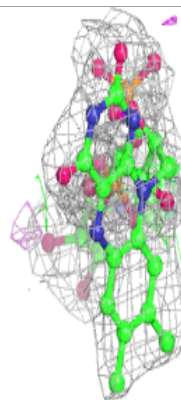
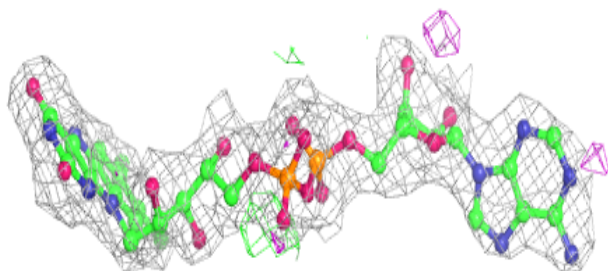
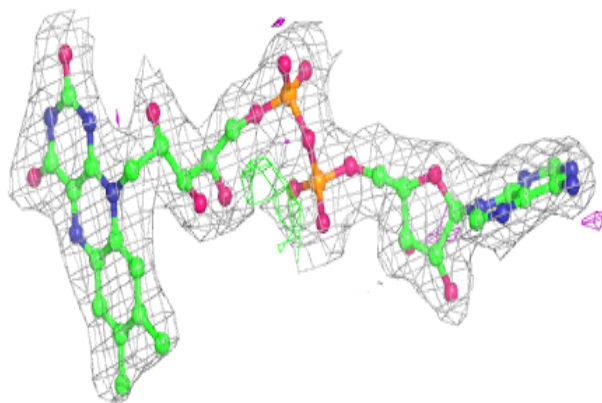
**Electron density around NAP D 502:**

$2mF_o-DF_c$  (at 0.7 rmsd) in gray  
 $mF_o-DF_c$  (at 3 rmsd) in purple (negative)  
and green (positive)

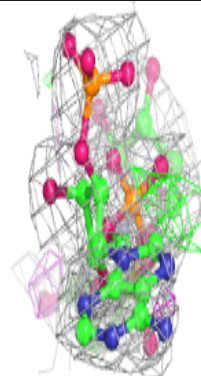
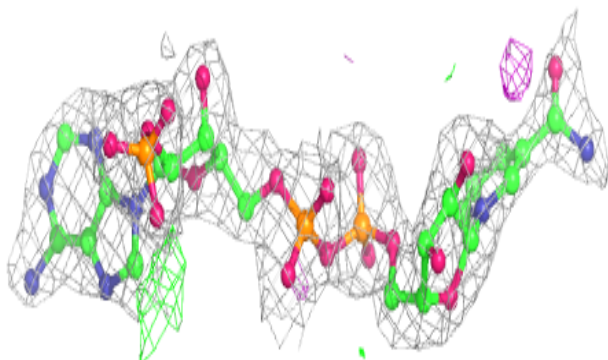
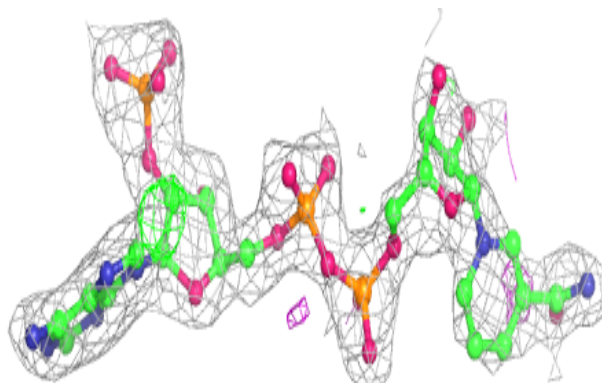


**Electron density around FAD F 501:**

$2mF_o-DF_c$  (at 0.7 rmsd) in gray  
 $mF_o-DF_c$  (at 3 rmsd) in purple (negative)  
and green (positive)

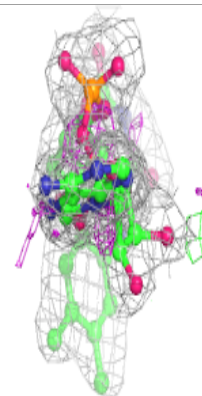
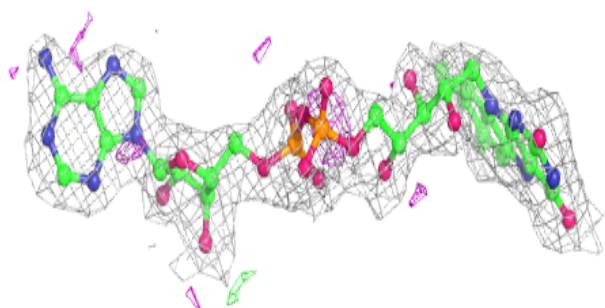
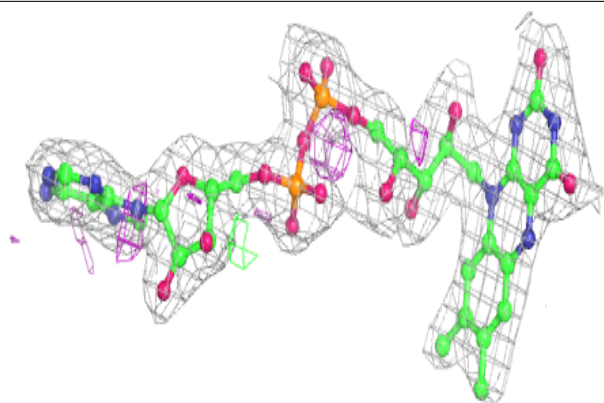
**Electron density around NAP A 502:**

$2mF_o-DF_c$  (at 0.7 rmsd) in gray  
 $mF_o-DF_c$  (at 3 rmsd) in purple (negative)  
and green (positive)

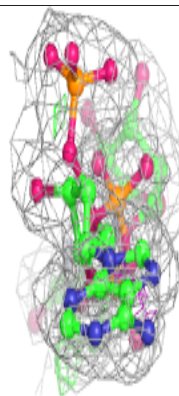
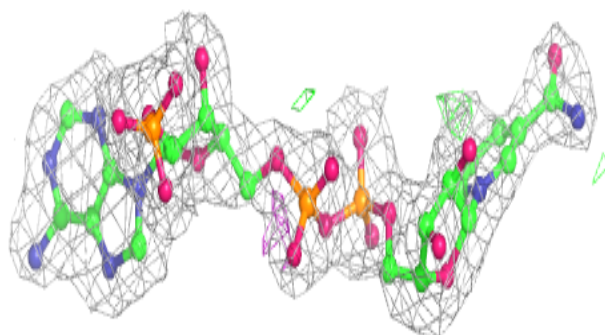
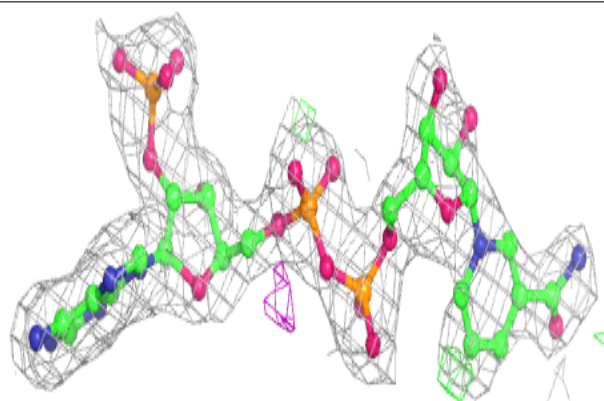


**Electron density around FAD B 501:**

$2mF_o-DF_c$  (at 0.7 rmsd) in gray  
 $mF_o-DF_c$  (at 3 rmsd) in purple (negative)  
and green (positive)

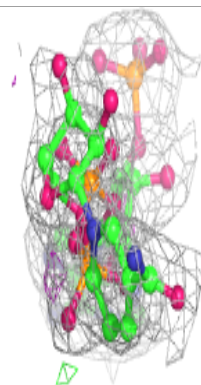
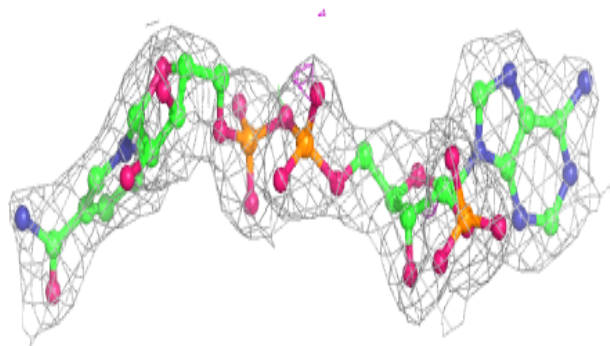
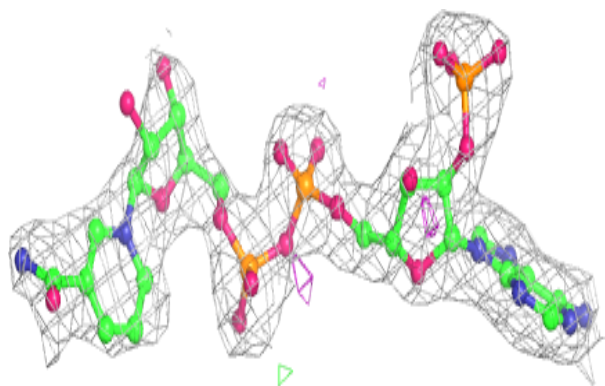
**Electron density around NAP B 502:**

$2mF_o-DF_c$  (at 0.7 rmsd) in gray  
 $mF_o-DF_c$  (at 3 rmsd) in purple (negative)  
and green (positive)

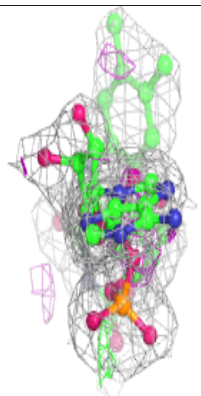
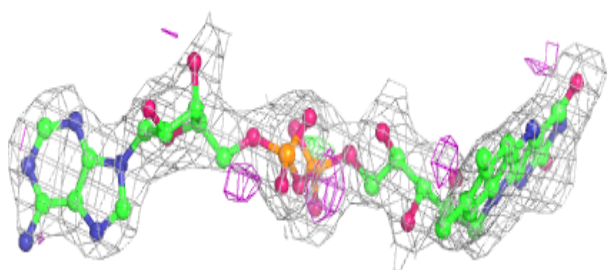
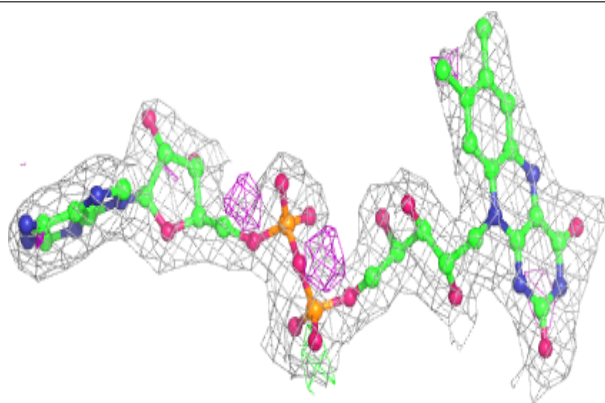


**Electron density around NAP F 502:**

$2mF_o-DF_c$  (at 0.7 rmsd) in gray  
 $mF_o-DF_c$  (at 3 rmsd) in purple (negative)  
and green (positive)

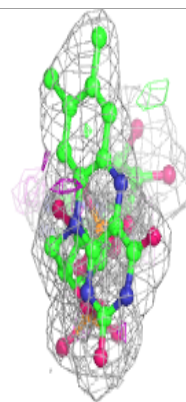
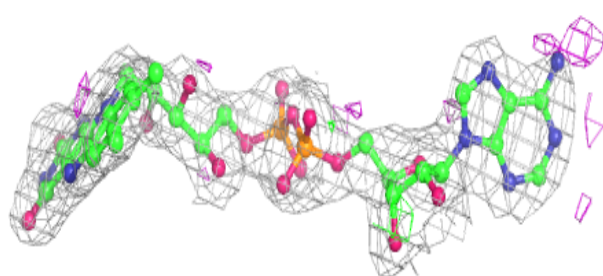
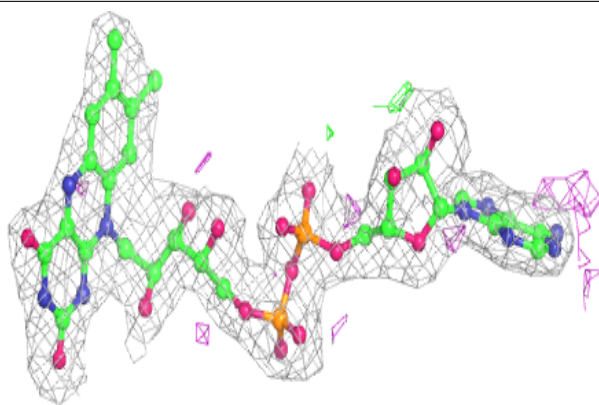
**Electron density around FAD G 501:**

$2mF_o-DF_c$  (at 0.7 rmsd) in gray  
 $mF_o-DF_c$  (at 3 rmsd) in purple (negative)  
and green (positive)

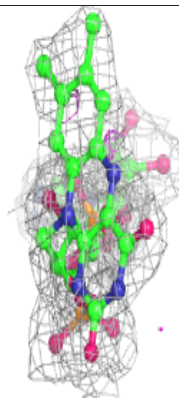
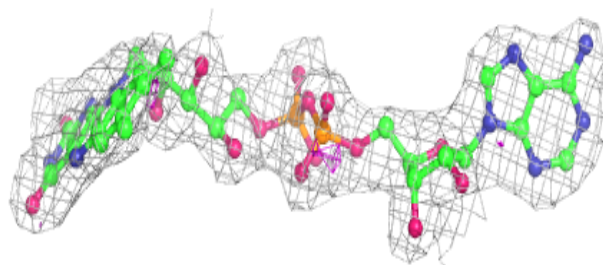
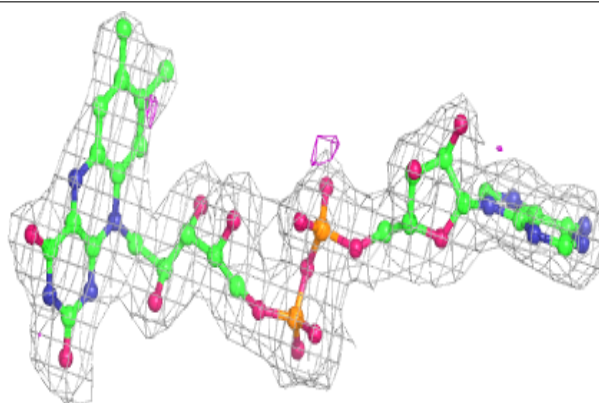


**Electron density around FAD C 501:**

$2mF_o-DF_c$  (at 0.7 rmsd) in gray  
 $mF_o-DF_c$  (at 3 rmsd) in purple (negative)  
and green (positive)

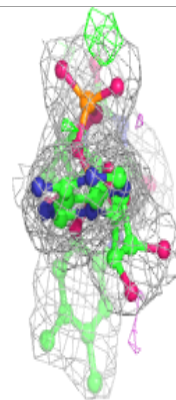
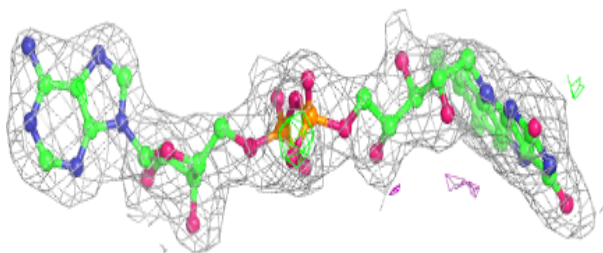
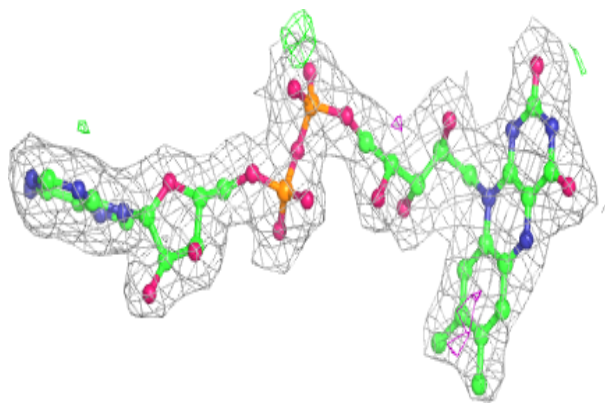
**Electron density around FAD D 501:**

$2mF_o-DF_c$  (at 0.7 rmsd) in gray  
 $mF_o-DF_c$  (at 3 rmsd) in purple (negative)  
and green (positive)

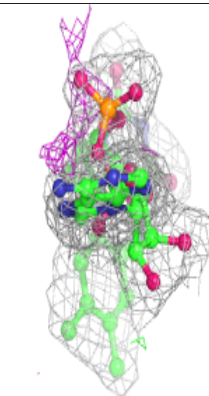
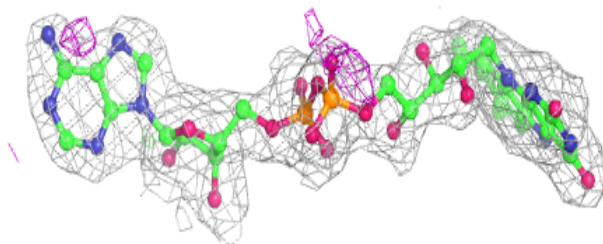
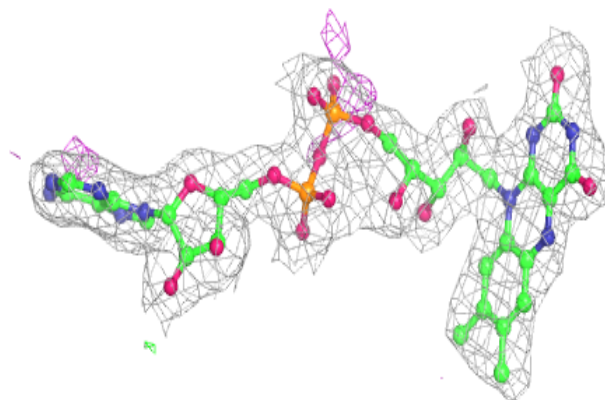


**Electron density around FAD E 501:**

$2mF_o-DF_c$  (at 0.7 rmsd) in gray  
 $mF_o-DF_c$  (at 3 rmsd) in purple (negative)  
and green (positive)

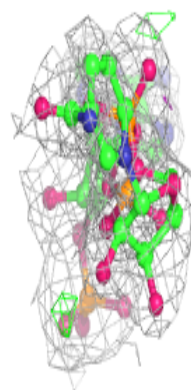
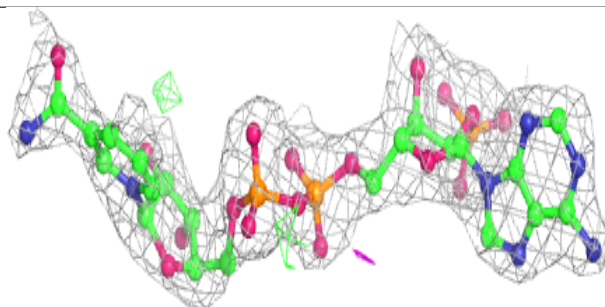
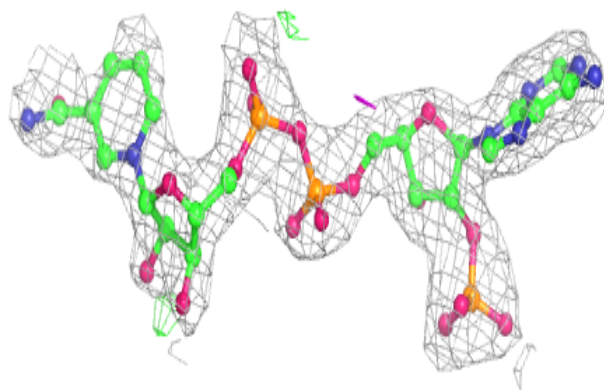
**Electron density around FAD A 501:**

$2mF_o-DF_c$  (at 0.7 rmsd) in gray  
 $mF_o-DF_c$  (at 3 rmsd) in purple (negative)  
and green (positive)

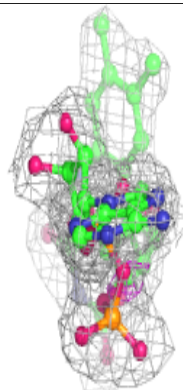
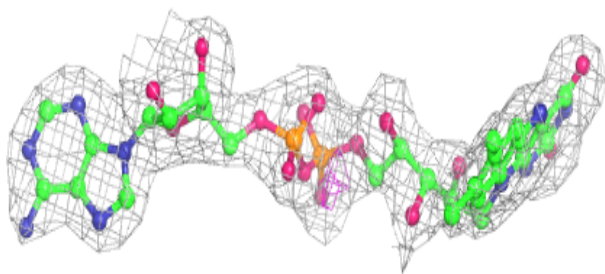
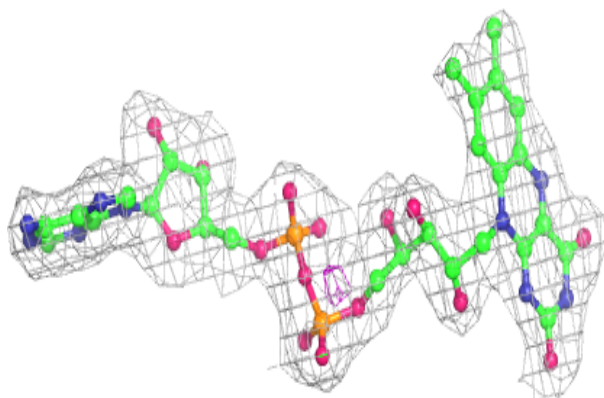


**Electron density around NAP H 502:**

$2mF_o-DF_c$  (at 0.7 rmsd) in gray  
 $mF_o-DF_c$  (at 3 rmsd) in purple (negative)  
and green (positive)

**Electron density around FAD H 501:**

$2mF_o-DF_c$  (at 0.7 rmsd) in gray  
 $mF_o-DF_c$  (at 3 rmsd) in purple (negative)  
and green (positive)



## 6.5 Other polymers [i](#)

There are no such residues in this entry.