



Full wwPDB X-ray Structure Validation Report ⓘ

May 17, 2020 – 03:35 am BST

PDB ID : 1XDF
Title : Crystal structure of pathogenesis-related protein LIPR-10.2A from yellow lupine
Authors : Pasternak, O.; Biesiadka, J.; Dolot, R.; Handschuh, L.; Bujacz, G.; Sikorski, M.M.; Jaskolski, M.
Deposited on : 2004-09-06
Resolution : 1.90 Å(reported)

This is a Full wwPDB X-ray Structure Validation Report for a publicly released PDB entry.

We welcome your comments at validation@mail.wwpdb.org

A user guide is available at

<https://www.wwpdb.org/validation/2017/XrayValidationReportHelp>

with specific help available everywhere you see the ⓘ symbol.

The following versions of software and data (see [references ⓘ](#)) were used in the production of this report:

MolProbity : 4.02b-467
Mogul : 1.8.5 (274361), CSD as541be (2020)
Xtriage (Phenix) : 1.13
EDS : 2.11
Percentile statistics : 20191225.v01 (using entries in the PDB archive December 25th 2019)
Refmac : 5.8.0158
CCP4 : 7.0.044 (Gargrove)
Ideal geometry (proteins) : Engh & Huber (2001)
Ideal geometry (DNA, RNA) : Parkinson et al. (1996)
Validation Pipeline (wwPDB-VP) : 2.11

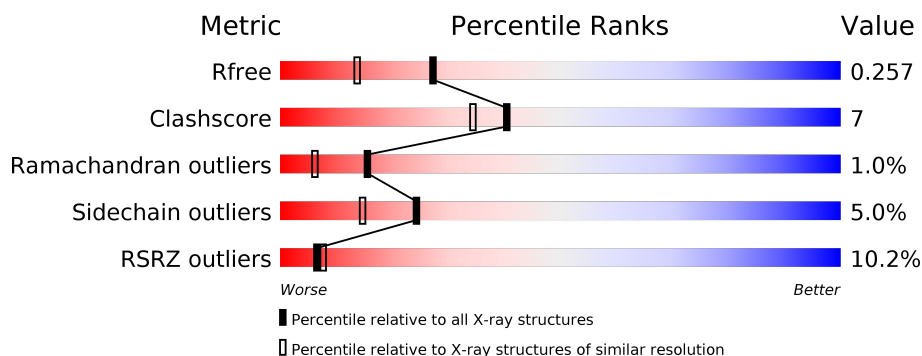
1 Overall quality at a glance

The following experimental techniques were used to determine the structure:

X-RAY DIFFRACTION

The reported resolution of this entry is 1.90 Å.

Percentile scores (ranging between 0-100) for global validation metrics of the entry are shown in the following graphic. The table shows the number of entries on which the scores are based.



Metric	Whole archive (#Entries)	Similar resolution (#Entries, resolution range(Å))
R_{free}	130704	6207 (1.90-1.90)
Clashscore	141614	6847 (1.90-1.90)
Ramachandran outliers	138981	6760 (1.90-1.90)
Sidechain outliers	138945	6760 (1.90-1.90)
RSRZ outliers	127900	6082 (1.90-1.90)

The table below summarises the geometric issues observed across the polymeric chains and their fit to the electron density. The red, orange, yellow and green segments on the lower bar indicate the fraction of residues that contain outliers for ≥ 3 , 2, 1 and 0 types of geometric quality criteria respectively. A grey segment represents the fraction of residues that are not modelled. The numeric value for each fraction is indicated below the corresponding segment, with a dot representing fractions $\leq 5\%$. The upper red bar (where present) indicates the fraction of residues that have poor fit to the electron density. The numeric value is given above the bar.

Mol	Chain	Length	Quality of chain
1	A	157	<div> <div>9%</div> <div>87%</div> <div>12%</div> <div>.</div> </div>
1	B	157	<div> <div>11%</div> <div>77%</div> <div>20%</div> <div>..</div> </div>

2 Entry composition [i](#)

There are 4 unique types of molecules in this entry. The entry contains 2643 atoms, of which 0 are hydrogens and 0 are deuteriums.

In the tables below, the ZeroOcc column contains the number of atoms modelled with zero occupancy, the AltConf column contains the number of residues with at least one atom in alternate conformation and the Trace column contains the number of residues modelled with at most 2 atoms.

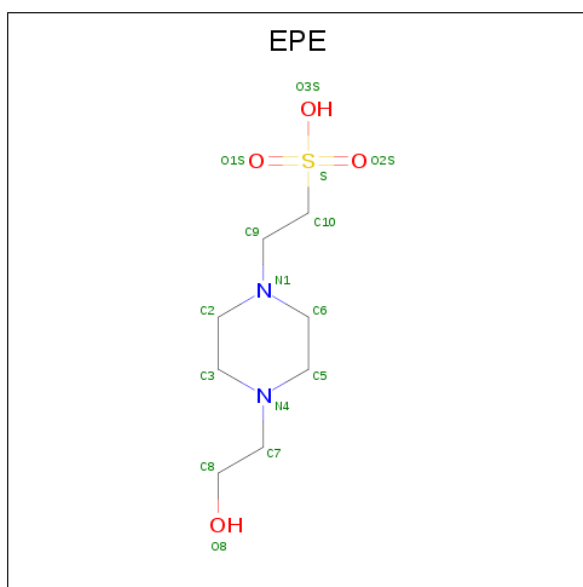
- Molecule 1 is a protein called PR10.2A.

Mol	Chain	Residues	Atoms				ZeroOcc	AltConf	Trace
1	A	157	Total	C	N	O	0	0	0
			1180	747	193	240			
1	B	157	Total	C	N	O	0	0	0
			1166	740	192	234			

- Molecule 2 is SODIUM ION (three-letter code: NA) (formula: Na).

Mol	Chain	Residues	Atoms		ZeroOcc	AltConf
2	A	1	Total	Na	0	0
			1	1		

- Molecule 3 is 4-(2-HYDROXYETHYL)-1-PIPERAZINE ETHANESULFONIC ACID (three-letter code: EPE) (formula: C₈H₁₈N₂O₄S).



Mol	Chain	Residues	Atoms					ZeroOcc	AltConf
3	A	1	Total	C	N	O	S	0	0
			15	8	2	4	1		

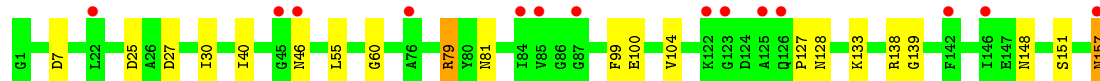
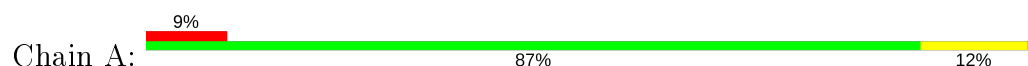
- Molecule 4 is water.

Mol	Chain	Residues	Atoms		ZeroOcc	AltConf
4	A	157	Total 157	O 157	0	0
4	B	124	Total 124	O 124	0	0

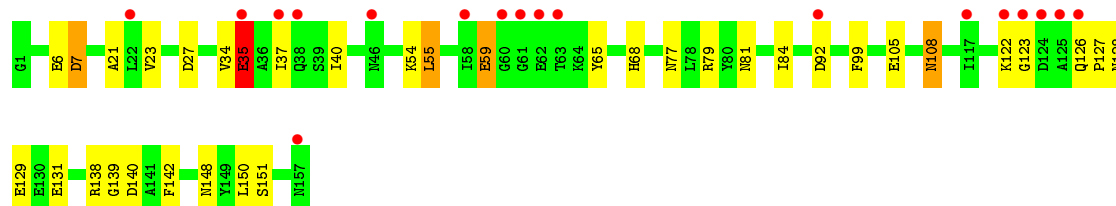
3 Residue-property plots [i](#)

These plots are drawn for all protein, RNA and DNA chains in the entry. The first graphic for a chain summarises the proportions of the various outlier classes displayed in the second graphic. The second graphic shows the sequence view annotated by issues in geometry and electron density. Residues are color-coded according to the number of geometric quality criteria for which they contain at least one outlier: green = 0, yellow = 1, orange = 2 and red = 3 or more. A red dot above a residue indicates a poor fit to the electron density ($RSRZ > 2$). Stretches of 2 or more consecutive residues without any outlier are shown as a green connector. Residues present in the sample, but not in the model, are shown in grey.

• Molecule 1: PR10.2A



• Molecule 1: PR10.2A



4 Data and refinement statistics

Property	Value	Source
Space group	P 21 21 21	Depositor
Cell constants a, b, c, α , β , γ	48.96 Å 69.24 Å 112.92 Å 90.00° 90.00° 90.00°	Depositor
Resolution (Å)	20.00 – 1.90 24.46 – 1.90	Depositor EDS
% Data completeness (in resolution range)	96.8 (20.00-1.90) 96.0 (24.46-1.90)	Depositor EDS
R_{merge}	0.05	Depositor
R_{sym}	(Not available)	Depositor
$\langle I/\sigma(I) \rangle$ ¹	2.41 (at 1.90 Å)	Xtriage
Refinement program	REFMAC 5.1.19	Depositor
R, R_{free}	0.205 , 0.251 0.213 , 0.257	Depositor DCC
R_{free} test set	1237 reflections (4.02%)	wwPDB-VP
Wilson B-factor (Å ²)	31.0	Xtriage
Anisotropy	0.588	Xtriage
Bulk solvent k_{sol} (e/Å ³), B_{sol} (Å ²)	0.34 , 52.1	EDS
L-test for twinning ²	$\langle L \rangle = 0.49$, $\langle L^2 \rangle = 0.32$	Xtriage
Estimated twinning fraction	No twinning to report.	Xtriage
F_o, F_c correlation	0.95	EDS
Total number of atoms	2643	wwPDB-VP
Average B, all atoms (Å ²)	29.0	wwPDB-VP

Xtriage's analysis on translational NCS is as follows: *The analyses of the Patterson function reveals a significant off-origin peak that is 28.14 % of the origin peak, indicating pseudo-translational symmetry. The chance of finding a peak of this or larger height randomly in a structure without pseudo-translational symmetry is equal to 1.9421e-03. The detected translational NCS is most likely also responsible for the elevated intensity ratio.*

¹Intensities estimated from amplitudes.

²Theoretical values of $\langle |L| \rangle$, $\langle L^2 \rangle$ for acentric reflections are 0.5, 0.333 respectively for untwinned datasets, and 0.375, 0.2 for perfectly twinned datasets.

5 Model quality

5.1 Standard geometry

Bond lengths and bond angles in the following residue types are not validated in this section: NA, EPE

The Z score for a bond length (or angle) is the number of standard deviations the observed value is removed from the expected value. A bond length (or angle) with $|Z| > 5$ is considered an outlier worth inspection. RMSZ is the root-mean-square of all Z scores of the bond lengths (or angles).

Mol	Chain	Bond lengths		Bond angles	
		RMSZ	$\# Z > 5$	RMSZ	$\# Z > 5$
1	A	0.85	0/1198	1.01	5/1617 (0.3%)
1	B	0.86	1/1184 (0.1%)	0.93	4/1600 (0.2%)
All	All	0.86	1/2382 (0.0%)	0.97	9/3217 (0.3%)

Chiral center outliers are detected by calculating the chiral volume of a chiral center and verifying if the center is modelled as a planar moiety or with the opposite hand. A planarity outlier is detected by checking planarity of atoms in a peptide group, atoms in a mainchain group or atoms of a sidechain that are expected to be planar.

Mol	Chain	#Chirality outliers	#Planarity outliers
1	B	0	1

All (1) bond length outliers are listed below:

Mol	Chain	Res	Type	Atoms	Z	Observed(Å)	Ideal(Å)
1	B	105	GLU	CD-OE2	-5.68	1.19	1.25

All (9) bond angle outliers are listed below:

Mol	Chain	Res	Type	Atoms	Z	Observed(°)	Ideal(°)
1	B	7	ASP	CB-CG-OD2	8.74	126.17	118.30
1	A	7	ASP	CB-CG-OD2	7.71	125.23	118.30
1	A	25	ASP	CB-CG-OD2	6.59	124.23	118.30
1	B	92	ASP	CB-CG-OD2	6.24	123.92	118.30
1	B	27	ASP	CB-CG-OD2	6.08	123.78	118.30
1	B	140	ASP	CB-CG-OD1	5.42	123.18	118.30
1	A	138	ARG	NE-CZ-NH1	5.30	122.95	120.30
1	A	27	ASP	CB-CG-OD2	5.20	122.98	118.30
1	A	79	ARG	CA-CB-CG	5.03	124.47	113.40

There are no chirality outliers.

All (1) planarity outliers are listed below:

Mol	Chain	Res	Type	Group
1	B	123	GLY	Peptide

5.2 Too-close contacts ⓘ

In the following table, the Non-H and H(model) columns list the number of non-hydrogen atoms and hydrogen atoms in the chain respectively. The H(added) column lists the number of hydrogen atoms added and optimized by MolProbity. The Clashes column lists the number of clashes within the asymmetric unit, whereas Symm-Clashes lists symmetry related clashes.

Mol	Chain	Non-H	H(model)	H(added)	Clashes	Symm-Clashes
1	A	1180	0	1181	17	0
1	B	1166	0	1162	20	0
2	A	1	0	0	0	0
3	A	15	0	17	0	0
4	A	157	0	0	2	0
4	B	124	0	0	2	0
All	All	2643	0	2360	34	0

The all-atom clashscore is defined as the number of clashes found per 1000 atoms (including hydrogen atoms). The all-atom clashscore for this structure is 7.

All (34) close contacts within the same asymmetric unit are listed below, sorted by their clash magnitude.

Atom-1	Atom-2	Interatomic distance (Å)	Clash overlap (Å)
1:A:79:ARG:HH21	1:A:81:ASN:HD21	1.32	0.77
1:B:108:ASN:HD22	1:B:108:ASN:C	1.89	0.74
1:B:40:ILE:HG12	1:B:55:LEU:HD13	1.70	0.73
1:B:79:ARG:HH11	1:B:81:ASN:HD21	1.38	0.70
1:B:99:PHE:CZ	1:B:139:GLY:HA3	2.30	0.66
1:A:60:GLY:HA2	1:B:23:VAL:HG23	1.78	0.66
1:A:99:PHE:CZ	1:A:139:GLY:HA3	2.34	0.63
1:A:30:ILE:CG2	1:A:40:ILE:HD11	2.28	0.62
1:A:40:ILE:HD13	1:A:55:LEU:HD21	1.85	0.59
1:A:30:ILE:HG21	1:A:40:ILE:HD11	1.86	0.56
1:A:40:ILE:HD13	1:A:55:LEU:CD2	2.39	0.52
1:B:99:PHE:CE1	1:B:139:GLY:HA3	2.45	0.51
1:B:127:PRO:HA	1:B:131:GLU:OE1	2.13	0.49
1:B:68:HIS:CD2	1:B:142:PHE:CE2	3.01	0.49

Continued on next page...

Continued from previous page...

Atom-1	Atom-2	Interatomic distance (Å)	Clash overlap (Å)
1:A:40:ILE:CD1	1:A:55:LEU:CD2	2.92	0.47
1:B:34:VAL:HB	1:B:37:ILE:HD12	1.97	0.47
1:B:108:ASN:ND2	1:B:108:ASN:C	2.62	0.45
1:A:60:GLY:HA2	1:B:23:VAL:CG2	2.45	0.45
1:B:21:ALA:CB	1:B:150:LEU:HD11	2.46	0.45
1:A:81:ASN:ND2	1:A:100:GLU:HA	2.31	0.45
1:A:127:PRO:HA	4:A:557:HOH:O	2.16	0.45
1:B:54:LYS:HD3	1:B:65:TYR:CD2	2.52	0.44
1:A:40:ILE:CD1	1:A:55:LEU:HD21	2.48	0.43
1:B:59:GLU:OE1	4:B:276:HOH:O	2.21	0.43
1:B:84:ILE:HD13	1:B:138:ARG:HB3	2.01	0.42
1:A:79:ARG:HE	1:A:79:ARG:HB3	1.81	0.42
1:A:128:ASN:N	4:A:556:HOH:O	2.31	0.41
1:B:34:VAL:O	1:B:35:GLU:C	2.59	0.41
1:B:7:ASP:OD1	4:B:247:HOH:O	2.22	0.41
1:A:128:ASN:OD1	1:A:128:ASN:C	2.59	0.41
1:A:133:LYS:HD3	1:B:77:ASN:OD1	2.21	0.41
1:B:35:GLU:N	1:B:35:GLU:CD	2.73	0.40
1:A:151:SER:O	1:A:157:ASN:ND2	2.53	0.40
1:B:126:GLN:N	1:B:127:PRO:HD3	2.36	0.40

There are no symmetry-related clashes.

5.3 Torsion angles [i](#)

5.3.1 Protein backbone [i](#)

In the following table, the Percentiles column shows the percent Ramachandran outliers of the chain as a percentile score with respect to all X-ray entries followed by that with respect to entries of similar resolution.

The Analysed column shows the number of residues for which the backbone conformation was analysed, and the total number of residues.

Mol	Chain	Analysed	Favoured	Allowed	Outliers	Percentiles	
1	A	155/157 (99%)	153 (99%)	2 (1%)	0	100	100
1	B	155/157 (99%)	147 (95%)	5 (3%)	3 (2%)	8	1
All	All	310/314 (99%)	300 (97%)	7 (2%)	3 (1%)	15	6

All (3) Ramachandran outliers are listed below:

Mol	Chain	Res	Type
1	B	128	ASN
1	B	35	GLU
1	B	129	GLU

5.3.2 Protein sidechains ⓘ

In the following table, the Percentiles column shows the percent sidechain outliers of the chain as a percentile score with respect to all X-ray entries followed by that with respect to entries of similar resolution.

The Analysed column shows the number of residues for which the sidechain conformation was analysed, and the total number of residues.

Mol	Chain	Analysed	Rotameric	Outliers	Percentiles	
1	A	122/123 (99%)	118 (97%)	4 (3%)	38	29
1	B	118/123 (96%)	110 (93%)	8 (7%)	16	7
All	All	240/246 (98%)	228 (95%)	12 (5%)	24	15

All (12) residues with a non-rotameric sidechain are listed below:

Mol	Chain	Res	Type
1	A	46	ASN
1	A	104	VAL
1	A	148	ASN
1	A	157	ASN
1	B	6	GLU
1	B	35	GLU
1	B	55	LEU
1	B	59	GLU
1	B	108	ASN
1	B	122	LYS
1	B	148	ASN
1	B	151	SER

Some sidechains can be flipped to improve hydrogen bonding and reduce clashes. All (6) such sidechains are listed below:

Mol	Chain	Res	Type
1	A	46	ASN
1	A	81	ASN
1	B	46	ASN
1	B	81	ASN

Continued on next page...

Continued from previous page...

Mol	Chain	Res	Type
1	B	108	ASN
1	B	157	ASN

5.3.3 RNA ⓘ

There are no RNA molecules in this entry.

5.4 Non-standard residues in protein, DNA, RNA chains ⓘ

There are no non-standard protein/DNA/RNA residues in this entry.

5.5 Carbohydrates ⓘ

There are no carbohydrates in this entry.

5.6 Ligand geometry ⓘ

Of 2 ligands modelled in this entry, 1 is monoatomic - leaving 1 for Mogul analysis.

In the following table, the Counts columns list the number of bonds (or angles) for which Mogul statistics could be retrieved, the number of bonds (or angles) that are observed in the model and the number of bonds (or angles) that are defined in the Chemical Component Dictionary. The Link column lists molecule types, if any, to which the group is linked. The Z score for a bond length (or angle) is the number of standard deviations the observed value is removed from the expected value. A bond length (or angle) with $|Z| > 2$ is considered an outlier worth inspection. RMSZ is the root-mean-square of all Z scores of the bond lengths (or angles).

Mol	Type	Chain	Res	Link	Bond lengths			Bond angles		
					Counts	RMSZ	$\# Z > 2$	Counts	RMSZ	$\# Z > 2$
3	EPE	A	301	-	15,15,15	0.82	1 (6%)	18,20,20	1.45	3 (16%)

In the following table, the Chirals column lists the number of chiral outliers, the number of chiral centers analysed, the number of these observed in the model and the number defined in the Chemical Component Dictionary. Similar counts are reported in the Torsion and Rings columns. '-' means no outliers of that kind were identified.

Mol	Type	Chain	Res	Link	Chirals	Torsions	Rings
3	EPE	A	301	-	-	2/9/19/19	0/1/1/1

All (1) bond length outliers are listed below:

Mol	Chain	Res	Type	Atoms	Z	Observed(Å)	Ideal(Å)
3	A	301	EPE	C10-S	2.93	1.81	1.77

All (3) bond angle outliers are listed below:

Mol	Chain	Res	Type	Atoms	Z	Observed($^{\circ}$)	Ideal($^{\circ}$)
3	A	301	EPE	O3S-S-C10	2.59	109.96	105.77
3	A	301	EPE	O2S-S-C10	2.57	110.01	106.92
3	A	301	EPE	C5-N4-C3	2.25	113.89	108.83

There are no chirality outliers.

All (2) torsion outliers are listed below:

Mol	Chain	Res	Type	Atoms
3	A	301	EPE	C10-C9-N1-C6
3	A	301	EPE	C9-C10-S-O2S

There are no ring outliers.

No monomer is involved in short contacts.

5.7 Other polymers [i](#)

There are no such residues in this entry.

5.8 Polymer linkage issues [i](#)

There are no chain breaks in this entry.

6 Fit of model and data

6.1 Protein, DNA and RNA chains

In the following table, the column labelled ‘#RSRZ> 2’ contains the number (and percentage) of RSRZ outliers, followed by percent RSRZ outliers for the chain as percentile scores relative to all X-ray entries and entries of similar resolution. The OWAB column contains the minimum, median, 95th percentile and maximum values of the occupancy-weighted average B-factor per residue. The column labelled ‘Q< 0.9’ lists the number of (and percentage) of residues with an average occupancy less than 0.9.

Mol	Chain	Analysed	<RSRZ>	#RSRZ>2	OWAB(Å ²)	Q<0.9
1	A	157/157 (100%)	0.30	14 (8%) 9 11	12, 24, 38, 49	0
1	B	157/157 (100%)	0.60	18 (11%) 4 5	15, 25, 40, 55	0
All	All	314/314 (100%)	0.45	32 (10%) 6 8	12, 25, 40, 55	0

All (32) RSRZ outliers are listed below:

Mol	Chain	Res	Type	RSRZ
1	B	125	ALA	9.8
1	B	61	GLY	7.6
1	B	157	ASN	5.5
1	B	60	GLY	4.7
1	A	157	ASN	4.6
1	B	62	GLU	4.0
1	B	126	GLN	4.0
1	A	46	ASN	4.0
1	B	122	LYS	3.7
1	B	124	ASP	3.3
1	B	46	ASN	3.2
1	A	123	GLY	3.1
1	A	84	ILE	2.9
1	B	123	GLY	2.7
1	B	38	GLN	2.7
1	B	37	ILE	2.6
1	B	58	ILE	2.6
1	A	146	ILE	2.4
1	A	85	VAL	2.4
1	A	22	LEU	2.4
1	A	45	GLY	2.3
1	B	22	LEU	2.3
1	B	35	GLU	2.3
1	B	92	ASP	2.2

Continued on next page...

Continued from previous page...

Mol	Chain	Res	Type	RSRZ
1	B	63	THR	2.2
1	A	125	ALA	2.2
1	A	76	ALA	2.1
1	B	117	ILE	2.1
1	A	126	GLN	2.1
1	A	142	PHE	2.0
1	A	122	LYS	2.0
1	A	87	GLY	2.0

6.2 Non-standard residues in protein, DNA, RNA chains [i](#)

There are no non-standard protein/DNA/RNA residues in this entry.

6.3 Carbohydrates [i](#)

There are no carbohydrates in this entry.

6.4 Ligands [i](#)

In the following table, the Atoms column lists the number of modelled atoms in the group and the number defined in the chemical component dictionary. The B-factors column lists the minimum, median, 95th percentile and maximum values of B factors of atoms in the group. The column labelled 'Q< 0.9' lists the number of atoms with occupancy less than 0.9.

Mol	Type	Chain	Res	Atoms	RSCC	RSR	B-factors(\AA^2)	Q<0.9
3	EPE	A	301	15/15	0.38	0.34	65,68,71,72	15
2	NA	A	401	1/1	0.93	0.29	47,47,47,47	0

6.5 Other polymers [i](#)

There are no such residues in this entry.