



# Full wwPDB X-ray Structure Validation Report ⓘ

May 16, 2020 – 09:47 pm BST

PDB ID : 1XDS  
Title : Crystal structure of Aclacinomycin-10-hydroxylase (RdmB) in complex with S-adenosyl-L-methionine (SAM) and 11-deoxy-beta-rhodomycin (DbrA)  
Authors : Jansson, A.; Koskiniemi, H.; Erola, A.; Wang, J.; Mantsala, P.; Schneider, G.; Niemi, J.; Structural Proteomics in Europe (SPINE)  
Deposited on : 2004-09-08  
Resolution : 2.30 Å(reported)

This is a Full wwPDB X-ray Structure Validation Report for a publicly released PDB entry.

We welcome your comments at [validation@mail.wwpdb.org](mailto:validation@mail.wwpdb.org)

A user guide is available at

<https://www.wwpdb.org/validation/2017/XrayValidationReportHelp>

with specific help available everywhere you see the ⓘ symbol.

---

The following versions of software and data (see [references ⓘ](#)) were used in the production of this report:

MolProbity : 4.02b-467  
Mogul : 1.8.5 (274361), CSD as541be (2020)  
Xtriage (Phenix) : 1.13  
EDS : 2.11  
buster-report : 1.1.7 (2018)  
Percentile statistics : 20191225.v01 (using entries in the PDB archive December 25th 2019)  
Refmac : 5.8.0158  
CCP4 : 7.0.044 (Gargrove)  
Ideal geometry (proteins) : Engh & Huber (2001)  
Ideal geometry (DNA, RNA) : Parkinson et al. (1996)  
Validation Pipeline (wwPDB-VP) : 2.11

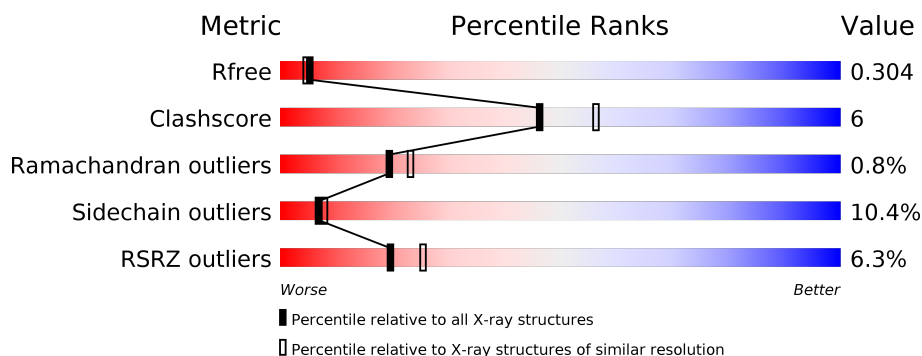
# 1 Overall quality at a glance

The following experimental techniques were used to determine the structure:

## *X-RAY DIFFRACTION*

The reported resolution of this entry is 2.30 Å.

Percentile scores (ranging between 0-100) for global validation metrics of the entry are shown in the following graphic. The table shows the number of entries on which the scores are based.



Metric	Whole archive (#Entries)	Similar resolution (#Entries, resolution range(Å))
$R_{free}$	130704	5042 (2.30-2.30)
Clashscore	141614	5643 (2.30-2.30)
Ramachandran outliers	138981	5575 (2.30-2.30)
Sidechain outliers	138945	5575 (2.30-2.30)
RSRZ outliers	127900	4938 (2.30-2.30)

The table below summarises the geometric issues observed across the polymeric chains and their fit to the electron density. The red, orange, yellow and green segments on the lower bar indicate the fraction of residues that contain outliers for  $\geq 3$ , 2, 1 and 0 types of geometric quality criteria respectively. A grey segment represents the fraction of residues that are not modelled. The numeric value for each fraction is indicated below the corresponding segment, with a dot representing fractions  $\leq 5\%$ . The upper red bar (where present) indicates the fraction of residues that have poor fit to the electron density. The numeric value is given above the bar.

Mol	Chain	Length	Quality of chain
1	A	374	<div> <div>5%</div> <div>71%</div> <div>15%</div> <div>• • 10%</div> </div>
1	B	374	<div> <div>6%</div> <div>69%</div> <div>13%</div> <div>5% • 12%</div> </div>

The following table lists non-polymeric compounds, carbohydrate monomers and non-standard residues in protein, DNA, RNA chains that are outliers for geometric or electron-density-fit criteria:

Mol	Type	Chain	Res	Chirality	Geometry	Clashes	Electron density
3	DRA	B	9600	X	-	-	-

## 2 Entry composition

There are 4 unique types of molecules in this entry. The entry contains 5315 atoms, of which 0 are hydrogens and 0 are deuteriums.

In the tables below, the ZeroOcc column contains the number of atoms modelled with zero occupancy, the AltConf column contains the number of residues with at least one atom in alternate conformation and the Trace column contains the number of residues modelled with at most 2 atoms.

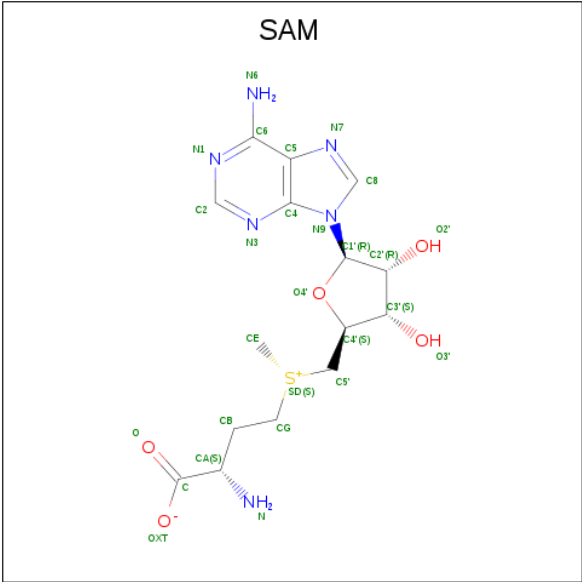
- Molecule 1 is a protein called Protein RdmB.

Mol	Chain	Residues	Atoms						ZeroOcc	AltConf	Trace
1	A	336	Total	C	N	O	S	Se	39	0	0
			2534	1592	458	476	2	6			
1	B	330	Total	C	N	O	S	Se	28	0	0
			2499	1573	452	467	1	6			

There are 14 discrepancies between the modelled and reference sequences:

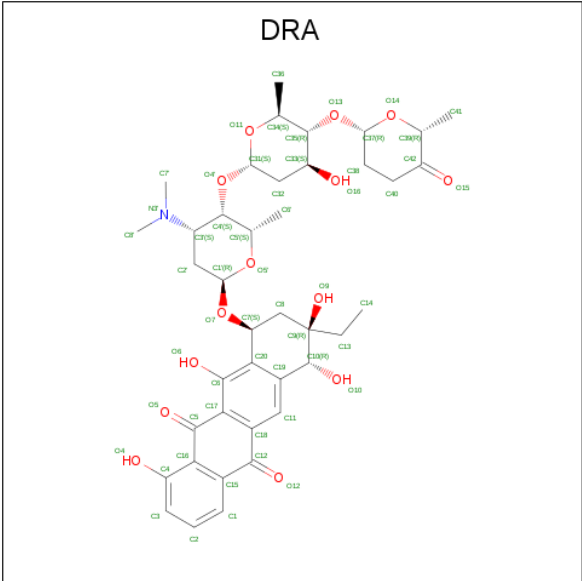
Chain	Residue	Modelled	Actual	Comment	Reference
A	1	MSE	MET	MODIFIED RESIDUE	UNP Q54527
A	31	MSE	MET	MODIFIED RESIDUE	UNP Q54527
A	96	MSE	MET	MODIFIED RESIDUE	UNP Q54527
A	163	MSE	MET	MODIFIED RESIDUE	UNP Q54527
A	196	MSE	MET	MODIFIED RESIDUE	UNP Q54527
A	308	MSE	MET	MODIFIED RESIDUE	UNP Q54527
A	312	MSE	MET	MODIFIED RESIDUE	UNP Q54527
B	1	MSE	MET	MODIFIED RESIDUE	UNP Q54527
B	31	MSE	MET	MODIFIED RESIDUE	UNP Q54527
B	96	MSE	MET	MODIFIED RESIDUE	UNP Q54527
B	163	MSE	MET	MODIFIED RESIDUE	UNP Q54527
B	196	MSE	MET	MODIFIED RESIDUE	UNP Q54527
B	308	MSE	MET	MODIFIED RESIDUE	UNP Q54527
B	312	MSE	MET	MODIFIED RESIDUE	UNP Q54527

- Molecule 2 is S-ADENOSYLMETHIONINE (three-letter code: SAM) (formula: C<sub>15</sub>H<sub>22</sub>N<sub>6</sub>O<sub>5</sub>S).



Mol	Chain	Residues	Atoms					ZeroOcc	AltConf
2	A	1	Total	C	N	O	S	0	0
			27	15	6	5	1		
2	B	1	Total	C	N	O	S	0	0
			27	15	6	5	1		

- Molecule 3 is 11-DEOXY-BETA-RHODOMYCIN (three-letter code: DRA) (formula: C<sub>40</sub>H<sub>51</sub>NO<sub>14</sub>).



Mol	Chain	Residues	Atoms				ZeroOcc	AltConf
3	A	1	Total	C	N	O	8	0
			55	40	1	14		

Continued on next page...

*Continued from previous page...*

Mol	Chain	Residues	Atoms				ZeroOcc	AltConf
3	B	1	Total	C	N	O	8	0
			55	40	1	14		

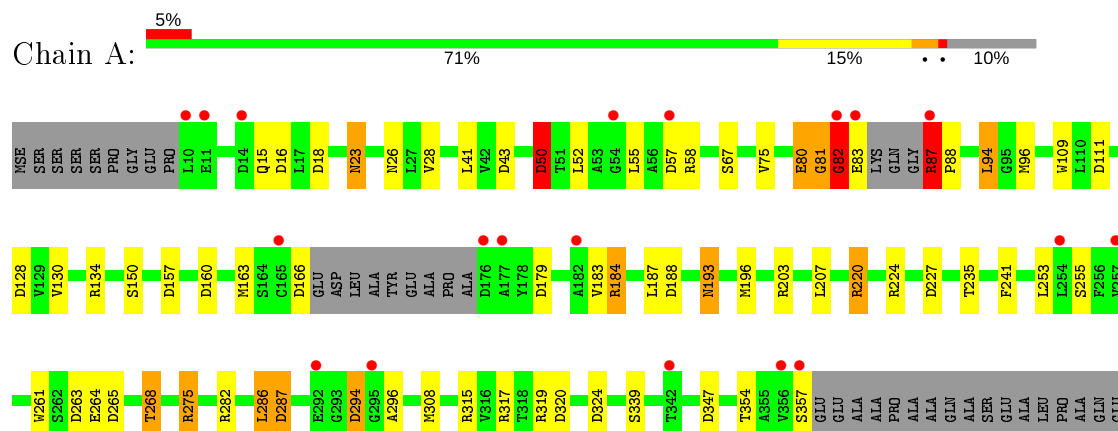
- Molecule 4 is water.

Mol	Chain	Residues	Atoms		ZeroOcc	AltConf
4	A	56	Total	O	0	0
			56	56		
4	B	62	Total	O	0	0
			62	62		

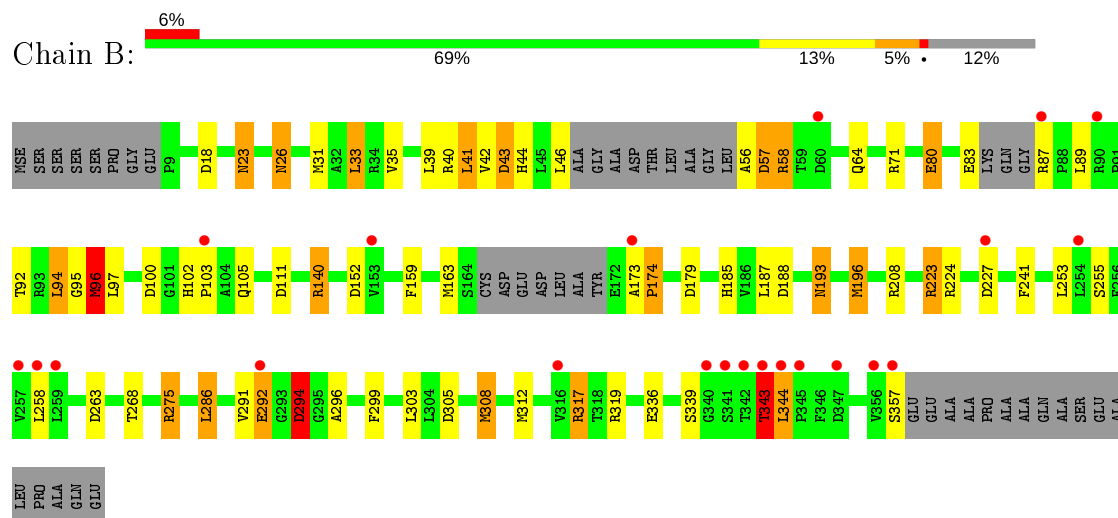
### 3 Residue-property plots [i](#)

These plots are drawn for all protein, RNA and DNA chains in the entry. The first graphic for a chain summarises the proportions of the various outlier classes displayed in the second graphic. The second graphic shows the sequence view annotated by issues in geometry and electron density. Residues are color-coded according to the number of geometric quality criteria for which they contain at least one outlier: green = 0, yellow = 1, orange = 2 and red = 3 or more. A red dot above a residue indicates a poor fit to the electron density ( $RSRZ > 2$ ). Stretches of 2 or more consecutive residues without any outlier are shown as a green connector. Residues present in the sample, but not in the model, are shown in grey.

#### • Molecule 1: Protein RdmB



#### • Molecule 1: Protein RdmB



## 4 Data and refinement statistics

Property	Value	Source
Space group	P 32 2 1	Depositor
Cell constants a, b, c, $\alpha$ , $\beta$ , $\gamma$	79.89 Å 79.89 Å 232.60 Å 90.00° 90.00° 120.00°	Depositor
Resolution (Å)	76.00 – 2.30 33.82 – 2.29	Depositor EDS
% Data completeness (in resolution range)	95.8 (76.00-2.30) 95.8 (33.82-2.29)	Depositor EDS
$R_{merge}$	(Not available)	Depositor
$R_{sym}$	0.06	Depositor
$\langle I/\sigma(I) \rangle$ <sup>1</sup>	3.85 (at 2.29 Å)	Xtriage
Refinement program	REFMAC 5.1.24	Depositor
R, $R_{free}$	0.251 , 0.296 0.264 , 0.304	Depositor DCC
$R_{free}$ test set	1910 reflections (5.02%)	wwPDB-VP
Wilson B-factor (Å <sup>2</sup> )	39.3	Xtriage
Anisotropy	0.001	Xtriage
Bulk solvent $k_{sol}$ (e/Å <sup>3</sup> ), $B_{sol}$ (Å <sup>2</sup> )	0.34 , 37.8	EDS
L-test for twinning <sup>2</sup>	$\langle  L  \rangle = 0.50$ , $\langle L^2 \rangle = 0.34$	Xtriage
Estimated twinning fraction	0.025 for -h,-k,l	Xtriage
$F_o, F_c$ correlation	0.90	EDS
Total number of atoms	5315	wwPDB-VP
Average B, all atoms (Å <sup>2</sup> )	42.0	wwPDB-VP

Xtriage's analysis on translational NCS is as follows: *The largest off-origin peak in the Patterson function is 4.32% of the height of the origin peak. No significant pseudotranslation is detected.*

<sup>1</sup>Intensities estimated from amplitudes.

<sup>2</sup>Theoretical values of  $\langle |L| \rangle$ ,  $\langle L^2 \rangle$  for acentric reflections are 0.5, 0.333 respectively for untwinned datasets, and 0.375, 0.2 for perfectly twinned datasets.



## 5 Model quality

### 5.1 Standard geometry

Bond lengths and bond angles in the following residue types are not validated in this section: DRA, SAM

The Z score for a bond length (or angle) is the number of standard deviations the observed value is removed from the expected value. A bond length (or angle) with  $|Z| > 5$  is considered an outlier worth inspection. RMSZ is the root-mean-square of all Z scores of the bond lengths (or angles).

Mol	Chain	Bond lengths		Bond angles	
		RMSZ	# Z  >5	RMSZ	# Z  >5
1	A	2.61	10/2570 (0.4%)	1.19	31/3484 (0.9%)
1	B	1.72	8/2536 (0.3%)	1.28	24/3437 (0.7%)
All	All	2.21	18/5106 (0.4%)	1.23	55/6921 (0.8%)

Chiral center outliers are detected by calculating the chiral volume of a chiral center and verifying if the center is modelled as a planar moiety or with the opposite hand. A planarity outlier is detected by checking planarity of atoms in a peptide group, atoms in a mainchain group or atoms of a sidechain that are expected to be planar.

Mol	Chain	#Chirality outliers	#Planarity outliers
1	A	0	6
1	B	0	3
All	All	0	9

All (18) bond length outliers are listed below:

Mol	Chain	Res	Type	Atoms	Z	Observed(Å)	Ideal(Å)
1	A	275	ARG	CD-NE	85.05	2.91	1.46
1	A	184	ARG	NE-CZ	72.23	2.27	1.33
1	A	220	ARG	CD-NE	-59.93	0.44	1.46
1	B	275	ARG	CD-NE	49.48	2.30	1.46
1	B	83	GLU	CG-CD	48.12	2.24	1.51
1	B	223	ARG	CD-NE	42.03	2.17	1.46
1	A	134	ARG	CD-NE	11.35	1.65	1.46
1	A	80	GLU	C-N	-10.15	1.14	1.33
1	B	196	MSE	SE-CE	-9.29	1.40	1.95
1	A	87	ARG	CB-CG	8.30	1.75	1.52
1	A	83	GLU	CB-CG	-7.69	1.37	1.52
1	A	347	ASP	CB-CG	7.27	1.67	1.51
1	B	58	ARG	CA-CB	-6.59	1.39	1.53
1	A	308	MSE	CG-SE	-6.40	1.73	1.95

*Continued on next page...*

*Continued from previous page...*

Mol	Chain	Res	Type	Atoms	Z	Observed(Å)	Ideal(Å)
1	A	96	MSE	CG-SE	-5.96	1.75	1.95
1	B	96	MSE	CG-SE	-5.48	1.76	1.95
1	B	58	ARG	C-N	5.30	1.46	1.34
1	B	308	MSE	SE-CE	-5.09	1.65	1.95

All (55) bond angle outliers are listed below:

Mol	Chain	Res	Type	Atoms	Z	Observed(°)	Ideal(°)
1	B	275	ARG	CD-NE-CZ	28.75	163.85	123.60
1	B	83	GLU	CG-CD-OE2	-22.12	74.06	118.30
1	B	83	GLU	CG-CD-OE1	21.01	160.32	118.30
1	A	275	ARG	CG-CD-NE	-20.82	68.07	111.80
1	B	83	GLU	CB-CG-CD	-19.98	60.25	114.20
1	A	81	GLY	N-CA-C	17.57	157.03	113.10
1	B	58	ARG	CA-CB-CG	14.66	145.65	113.40
1	B	275	ARG	CG-CD-NE	-14.58	81.19	111.80
1	A	87	ARG	CA-CB-CG	12.84	141.65	113.40
1	A	184	ARG	NE-CZ-NH2	-10.87	114.86	120.30
1	A	184	ARG	CD-NE-CZ	10.58	138.41	123.60
1	A	80	GLU	C-N-CA	8.94	141.06	122.30
1	A	80	GLU	O-C-N	-8.93	108.02	123.20
1	A	220	ARG	CD-NE-CZ	-8.71	111.41	123.60
1	A	347	ASP	CB-CG-OD2	8.54	125.98	118.30
1	B	58	ARG	CB-CA-C	8.41	127.22	110.40
1	A	50	ASP	CA-CB-CG	-8.26	95.23	113.40
1	B	57	ASP	O-C-N	-8.10	109.74	122.70
1	B	223	ARG	CG-CD-NE	-7.81	95.41	111.80
1	A	294	ASP	CB-CG-OD2	7.46	125.01	118.30
1	A	111	ASP	CB-CG-OD2	6.89	124.50	118.30
1	A	347	ASP	CA-CB-CG	-6.85	98.34	113.40
1	A	80	GLU	CA-C-N	6.81	129.82	116.20
1	A	82	GLY	O-C-N	-6.62	112.10	122.70
1	A	134	ARG	CD-NE-CZ	-6.61	114.35	123.60
1	A	227	ASP	CB-CG-OD2	6.56	124.21	118.30
1	B	58	ARG	CB-CG-CD	6.54	128.61	111.60
1	A	263	ASP	CB-CG-OD2	6.42	124.08	118.30
1	B	58	ARG	N-CA-CB	-6.42	99.05	110.60
1	B	294	ASP	CB-CG-OD2	6.41	124.07	118.30
1	B	227	ASP	CB-CG-OD2	6.33	124.00	118.30
1	A	160	ASP	CB-CG-OD2	6.28	123.95	118.30
1	B	263	ASP	CB-CG-OD2	6.28	123.95	118.30
1	B	56	ALA	CB-CA-C	-6.08	100.97	110.10

*Continued on next page...*

*Continued from previous page...*

Mol	Chain	Res	Type	Atoms	Z	Observed(°)	Ideal(°)
1	B	111	ASP	CB-CG-OD2	5.93	123.64	118.30
1	B	179	ASP	CB-CG-OD2	5.92	123.63	118.30
1	A	188	ASP	CB-CG-OD2	5.89	123.60	118.30
1	A	166	ASP	CB-CG-OD2	5.87	123.58	118.30
1	A	287	ASP	CB-CG-OD2	5.86	123.57	118.30
1	B	317	ARG	NE-CZ-NH1	5.82	123.21	120.30
1	A	94	LEU	CA-CB-CG	5.79	128.63	115.30
1	B	305	ASP	CB-CG-OD2	5.75	123.47	118.30
1	A	57	ASP	CB-CG-OD2	5.71	123.44	118.30
1	A	324	ASP	CB-CG-OD2	5.68	123.41	118.30
1	B	188	ASP	CB-CG-OD2	5.66	123.39	118.30
1	A	320	ASP	CB-CG-OD2	5.53	123.27	118.30
1	A	43	ASP	CB-CG-OD2	5.50	123.25	118.30
1	B	152	ASP	CB-CG-OD2	5.50	123.25	118.30
1	B	100	ASP	CB-CG-OD2	5.39	123.15	118.30
1	A	317	ARG	NE-CZ-NH1	5.34	122.97	120.30
1	B	43	ASP	CB-CG-OD2	5.23	123.01	118.30
1	A	179	ASP	CB-CG-OD2	5.21	122.98	118.30
1	A	157	ASP	CB-CG-OD2	5.13	122.92	118.30
1	B	317	ARG	NE-CZ-NH2	-5.10	117.75	120.30
1	A	18	ASP	CB-CG-OD2	5.09	122.88	118.30

There are no chirality outliers.

All (9) planarity outliers are listed below:

Mol	Chain	Res	Type	Group
1	A	184	ARG	Sidechain
1	A	220	ARG	Sidechain
1	A	50	ASP	Sidechain
1	A	80	GLU	Peptide
1	A	82	GLY	Mainchain
1	A	87	ARG	Mainchain
1	B	223	ARG	Sidechain
1	B	57	ASP	Mainchain
1	B	58	ARG	Mainchain

## 5.2 Too-close contacts

In the following table, the Non-H and H(model) columns list the number of non-hydrogen atoms and hydrogen atoms in the chain respectively. The H(added) column lists the number of hydrogen atoms added and optimized by MolProbity. The Clashes column lists the number of clashes within

the asymmetric unit, whereas Symm-Clashes lists symmetry related clashes.

Mol	Chain	Non-H	H(model)	H(added)	Clashes	Symm-Clashes
1	A	2534	0	2535	23	0
1	B	2499	0	2503	40	0
2	A	27	0	22	2	0
2	B	27	0	22	0	0
3	A	55	0	46	3	0
3	B	55	0	47	7	0
4	A	56	0	0	1	0
4	B	62	0	0	4	0
All	All	5315	0	5175	64	0

The all-atom clashscore is defined as the number of clashes found per 1000 atoms (including hydrogen atoms). The all-atom clashscore for this structure is 6.

All (64) close contacts within the same asymmetric unit are listed below, sorted by their clash magnitude.

Atom-1	Atom-2	Interatomic distance (Å)	Clash overlap (Å)
1:B:196:MSE:HE3	4:B:9647:HOH:O	1.80	0.81
1:A:23:ASN:C	1:A:23:ASN:HD22	1.94	0.70
1:A:163:MSE:SE	3:A:5600:DRA:H7'2	2.42	0.70
1:B:163:MSE:SE	3:B:9600:DRA:H7'2	2.42	0.68
1:A:255:SER:HB3	2:A:5635:SAM:HN1	1.60	0.66
1:B:23:ASN:C	1:B:23:ASN:HD22	1.98	0.66
1:B:173:ALA:HB3	1:B:174:PRO:HD3	1.77	0.65
1:B:196:MSE:HE1	1:B:255:SER:CB	2.27	0.65
1:A:16:ASP:HB3	1:B:94:LEU:HD22	1.80	0.64
1:A:193:ASN:C	1:A:193:ASN:HD22	2.01	0.62
1:B:196:MSE:HE1	1:B:255:SER:OG	2.00	0.61
1:A:87:ARG:O	1:A:88:PRO:O	2.18	0.61
1:A:196:MSE:HG2	1:A:253:LEU:HD21	1.84	0.60
1:A:109:TRP:CH2	1:A:163:MSE:HE1	2.37	0.60
1:B:159:PHE:CE1	1:B:163:MSE:HE3	2.37	0.60
3:B:9600:DRA:O10	3:B:9600:DRA:H142	2.04	0.57
1:B:42:VAL:HG13	1:B:96:MSE:HE3	1.86	0.57
1:B:193:ASN:C	1:B:193:ASN:HD22	2.09	0.55
1:A:183:VAL:HG12	1:A:207:LEU:HD11	1.89	0.53
3:A:5600:DRA:H6'2	3:A:5600:DRA:H321	1.90	0.53
1:B:42:VAL:CG1	1:B:96:MSE:HE3	2.39	0.52
1:B:31:MSE:HE3	1:B:31:MSE:HA	1.91	0.52
1:B:102:HIS:O	1:B:105:GLN:NE2	2.41	0.52
1:B:42:VAL:HG21	1:B:95:GLY:O	2.10	0.51

*Continued on next page...*

*Continued from previous page...*

Atom-1	Atom-2	Interatomic distance (Å)	Clash overlap (Å)
3:B:9600:DRA:H321	3:B:9600:DRA:H8'3	1.92	0.51
1:A:282:ARG:HD3	1:A:354:THR:HG22	1.92	0.51
1:B:80:GLU:HG3	1:B:92:THR:HG22	1.93	0.50
1:B:102:HIS:CD2	1:B:103:PRO:HD2	2.46	0.50
1:B:23:ASN:C	1:B:23:ASN:ND2	2.64	0.50
1:B:308:MSE:HE1	3:B:9600:DRA:C4	2.42	0.49
1:B:208:ARG:NH1	4:B:9664:HOH:O	2.45	0.49
1:A:286:LEU:N	1:A:286:LEU:HD23	2.28	0.49
1:B:296:ALA:HA	4:B:9686:HOH:O	2.13	0.48
1:B:80:GLU:O	1:B:89:LEU:HD12	2.14	0.48
1:B:312:MSE:HE1	3:B:9600:DRA:H3	1.94	0.48
1:A:28:VAL:HG21	1:B:303:LEU:CD1	2.43	0.47
1:A:52:LEU:HD11	1:A:67:SER:HB3	1.97	0.47
3:B:9600:DRA:O10	3:B:9600:DRA:C14	2.63	0.46
1:B:255:SER:HA	1:B:286:LEU:HB2	1.97	0.46
1:B:291:VAL:O	1:B:294:ASP:HB2	2.16	0.46
1:A:130:VAL:HG21	1:B:35:VAL:HG11	1.98	0.45
1:B:258:LEU:O	1:B:317:ARG:NH2	2.50	0.45
1:A:196:MSE:HE3	1:A:196:MSE:HA	1.99	0.44
1:A:75:VAL:HG11	1:B:299:PHE:HA	1.99	0.44
1:B:39:LEU:HB2	1:B:41:LEU:HD13	1.98	0.44
1:A:23:ASN:C	1:A:23:ASN:ND2	2.66	0.43
1:B:291:VAL:O	1:B:292:GLU:C	2.58	0.42
1:B:26:ASN:C	1:B:26:ASN:HD22	2.22	0.42
1:B:97:LEU:CD2	1:B:102:HIS:CE1	3.02	0.42
1:B:343:THR:HG22	1:B:344:LEU:HD22	2.00	0.42
1:B:46:LEU:HD23	1:B:46:LEU:N	2.33	0.42
1:A:294:ASP:HB3	1:A:296:ALA:H	1.83	0.42
1:A:109:TRP:HH2	1:A:163:MSE:HE1	1.82	0.42
1:B:294:ASP:HB3	1:B:296:ALA:H	1.85	0.42
1:B:357:SER:O	1:B:357:SER:OG	2.35	0.41
1:A:193:ASN:C	1:A:193:ASN:ND2	2.73	0.41
1:A:261:TRP:HB3	1:A:265:ASP:HB2	2.02	0.41
1:B:43:ASP:O	1:B:46:LEU:N	2.54	0.41
1:B:33:LEU:HD13	1:B:33:LEU:HA	1.93	0.41
1:A:23:ASN:ND2	4:A:5652:HOH:O	2.54	0.40
1:A:264:GLU:O	1:A:268:THR:HG22	2.20	0.40
1:B:140:ARG:HD3	4:B:9657:HOH:O	2.21	0.40
1:B:308:MSE:HE1	3:B:9600:DRA:C16	2.50	0.40
2:A:5635:SAM:O	3:A:5600:DRA:H8'1	2.22	0.40

There are no symmetry-related clashes.

## 5.3 Torsion angles [i](#)

### 5.3.1 Protein backbone [i](#)

In the following table, the Percentiles column shows the percent Ramachandran outliers of the chain as a percentile score with respect to all X-ray entries followed by that with respect to entries of similar resolution.

The Analysed column shows the number of residues for which the backbone conformation was analysed, and the total number of residues.

Mol	Chain	Analysed	Favoured	Allowed	Outliers	Percentiles	
1	A	330/374 (88%)	315 (96%)	13 (4%)	2 (1%)	25	31
1	B	322/374 (86%)	302 (94%)	17 (5%)	3 (1%)	17	20
All	All	652/748 (87%)	617 (95%)	30 (5%)	5 (1%)	19	23

All (5) Ramachandran outliers are listed below:

Mol	Chain	Res	Type
1	A	81	GLY
1	B	343	THR
1	B	292	GLU
1	B	174	PRO
1	A	82	GLY

### 5.3.2 Protein sidechains [i](#)

In the following table, the Percentiles column shows the percent sidechain outliers of the chain as a percentile score with respect to all X-ray entries followed by that with respect to entries of similar resolution.

The Analysed column shows the number of residues for which the sidechain conformation was analysed, and the total number of residues.

Mol	Chain	Analysed	Rotameric	Outliers	Percentiles	
1	A	261/280 (93%)	236 (90%)	25 (10%)	8	10
1	B	258/280 (92%)	229 (89%)	29 (11%)	6	6
All	All	519/560 (93%)	465 (90%)	54 (10%)	7	8

All (54) residues with a non-rotameric sidechain are listed below:

Mol	Chain	Res	Type
1	A	15	GLN

*Continued on next page...*

*Continued from previous page...*

Mol	Chain	Res	Type
1	A	23	ASN
1	A	26	ASN
1	A	41	LEU
1	A	50	ASP
1	A	55	LEU
1	A	58	ARG
1	A	87	ARG
1	A	94	LEU
1	A	128	ASP
1	A	150	SER
1	A	187	LEU
1	A	193	ASN
1	A	203	ARG
1	A	224	ARG
1	A	235	THR
1	A	241	PHE
1	A	268	THR
1	A	275	ARG
1	A	286	LEU
1	A	287	ASP
1	A	315	ARG
1	A	319	ARG
1	A	339	SER
1	A	357	SER
1	B	18	ASP
1	B	23	ASN
1	B	26	ASN
1	B	33	LEU
1	B	40	ARG
1	B	41	LEU
1	B	44	HIS
1	B	64	GLN
1	B	71	ARG
1	B	80	GLU
1	B	87	ARG
1	B	94	LEU
1	B	96	MSE
1	B	140	ARG
1	B	185	HIS
1	B	187	LEU
1	B	193	ASN
1	B	224	ARG

*Continued on next page...*

*Continued from previous page...*

Mol	Chain	Res	Type
1	B	241	PHE
1	B	253	LEU
1	B	268	THR
1	B	275	ARG
1	B	286	LEU
1	B	294	ASP
1	B	319	ARG
1	B	336	GLU
1	B	339	SER
1	B	343	THR
1	B	344	LEU

Some sidechains can be flipped to improve hydrogen bonding and reduce clashes. All (12) such sidechains are listed below:

Mol	Chain	Res	Type
1	A	23	ASN
1	A	26	ASN
1	A	72	HIS
1	A	185	HIS
1	A	193	ASN
1	A	260	ASN
1	B	23	ASN
1	B	26	ASN
1	B	72	HIS
1	B	185	HIS
1	B	193	ASN
1	B	260	ASN

### 5.3.3 RNA ⓘ

There are no RNA molecules in this entry.

## 5.4 Non-standard residues in protein, DNA, RNA chains ⓘ

There are no non-standard protein/DNA/RNA residues in this entry.

## 5.5 Carbohydrates ⓘ

There are no carbohydrates in this entry.



## 5.6 Ligand geometry

4 ligands are modelled in this entry.

In the following table, the Counts columns list the number of bonds (or angles) for which Mogul statistics could be retrieved, the number of bonds (or angles) that are observed in the model and the number of bonds (or angles) that are defined in the Chemical Component Dictionary. The Link column lists molecule types, if any, to which the group is linked. The Z score for a bond length (or angle) is the number of standard deviations the observed value is removed from the expected value. A bond length (or angle) with  $|Z| > 2$  is considered an outlier worth inspection. RMSZ is the root-mean-square of all Z scores of the bond lengths (or angles).

Mol	Type	Chain	Res	Link	Bond lengths			Bond angles		
					Counts	RMSZ	# Z  > 2	Counts	RMSZ	# Z  > 2
3	DRA	B	9600	-	59,61,61	4.56	8 (13%)	78,94,94	1.92	13 (16%)
3	DRA	A	5600	-	59,61,61	3.21	12 (20%)	78,94,94	2.64	20 (25%)
2	SAM	B	9635	-	21,29,29	1.76	1 (4%)	18,42,42	2.37	7 (38%)
2	SAM	A	5635	-	21,29,29	1.81	1 (4%)	18,42,42	2.43	8 (44%)

In the following table, the Chirals column lists the number of chiral outliers, the number of chiral centers analysed, the number of these observed in the model and the number defined in the Chemical Component Dictionary. Similar counts are reported in the Torsion and Rings columns. '-' means no outliers of that kind were identified.

Mol	Type	Chain	Res	Link	Chirals	Torsions	Rings
3	DRA	B	9600	-	2/2/17/17	11/19/99/99	0/7/7/7
3	DRA	A	5600	-	-	10/19/99/99	0/7/7/7
2	SAM	B	9635	-	-	0/8/33/33	0/3/3/3
2	SAM	A	5635	-	-	1/8/33/33	0/3/3/3

All (22) bond length outliers are listed below:

Mol	Chain	Res	Type	Atoms	Z	Observed(Å)	Ideal(Å)
3	B	9600	DRA	O13-C37	29.89	2.18	1.41
3	A	5600	DRA	O13-C37	-15.46	1.02	1.41
3	A	5600	DRA	O10-C10	-12.75	1.22	1.42
3	B	9600	DRA	O10-C10	-12.55	1.22	1.42
2	A	5635	SAM	C4-N3	6.67	1.44	1.35
2	B	9635	SAM	C4-N3	6.51	1.44	1.35
3	B	9600	DRA	C8'-N3'	-5.56	1.26	1.46
3	B	9600	DRA	C7'-N3'	-5.51	1.26	1.46
3	A	5600	DRA	C8'-N3'	-5.40	1.27	1.46
3	A	5600	DRA	C18-C17	5.22	1.49	1.41
3	A	5600	DRA	C7'-N3'	-5.17	1.27	1.46

*Continued on next page...*

*Continued from previous page...*

Mol	Chain	Res	Type	Atoms	Z	Observed(Å)	Ideal(Å)
3	A	5600	DRA	O4-C4	-5.08	1.26	1.36
3	B	9600	DRA	O4-C4	-5.07	1.26	1.36
3	B	9600	DRA	C18-C17	4.86	1.48	1.41
3	A	5600	DRA	O14-C39	4.52	1.52	1.43
3	B	9600	DRA	C18-C12	-4.18	1.39	1.48
3	A	5600	DRA	C18-C12	-3.71	1.40	1.48
3	B	9600	DRA	C15-C12	-3.64	1.40	1.48
3	A	5600	DRA	O14-C37	3.14	1.50	1.42
3	A	5600	DRA	C15-C12	-3.00	1.42	1.48
3	A	5600	DRA	C41-C39	2.57	1.60	1.51
3	A	5600	DRA	O12-C12	2.07	1.26	1.22

All (48) bond angle outliers are listed below:

Mol	Chain	Res	Type	Atoms	Z	Observed(°)	Ideal(°)
3	A	5600	DRA	C37-O13-C35	12.27	139.49	114.66
3	A	5600	DRA	O13-C37-C38	9.18	132.55	108.25
3	A	5600	DRA	C37-O14-C39	8.81	123.42	113.83
3	B	9600	DRA	C37-O13-C35	-7.68	99.12	114.66
3	A	5600	DRA	O4'-C31-C32	6.02	120.02	108.41
3	A	5600	DRA	O11-C31-C32	5.75	119.55	110.87
2	A	5635	SAM	C5'-SD-CG	5.51	117.45	103.40
3	B	9600	DRA	O11-C31-C32	5.35	118.94	110.87
3	B	9600	DRA	O10-C10-C19	5.33	121.72	110.56
2	B	9635	SAM	C5'-SD-CG	4.97	116.08	103.40
2	B	9635	SAM	N3-C2-N1	-4.79	121.19	128.68
2	A	5635	SAM	N3-C2-N1	-4.66	121.39	128.68
3	B	9600	DRA	O4'-C31-C32	4.32	116.75	108.41
2	B	9635	SAM	C4-C5-N7	-4.10	105.13	109.40
3	B	9600	DRA	O15-C42-C40	-3.89	114.88	122.11
3	B	9600	DRA	C38-C40-C42	-3.63	102.91	112.33
3	B	9600	DRA	C8'-N3'-C3'	3.53	123.73	113.11
3	B	9600	DRA	C2'-C3'-N3'	-3.53	105.69	115.67
3	A	5600	DRA	C2'-C3'-N3'	-3.43	105.99	115.67
3	B	9600	DRA	C15-C16-C4	3.37	121.55	118.41
3	A	5600	DRA	C15-C16-C4	3.25	121.44	118.41
3	A	5600	DRA	O14-C39-C41	3.24	119.07	109.53
3	A	5600	DRA	C8'-N3'-C7'	3.24	119.93	110.38
3	A	5600	DRA	C8'-N3'-C3'	3.06	122.32	113.11
2	B	9635	SAM	C2-N1-C6	3.03	123.94	118.75
2	A	5635	SAM	C4-C5-N7	-2.91	106.36	109.40
3	A	5600	DRA	O13-C37-O14	-2.79	100.85	109.86

*Continued on next page...*

*Continued from previous page...*

Mol	Chain	Res	Type	Atoms	Z	Observed(°)	Ideal(°)
3	B	9600	DRA	O13-C37-C38	-2.66	101.21	108.25
3	A	5600	DRA	C11-C18-C17	-2.66	116.81	120.34
2	A	5635	SAM	C5-C6-N6	-2.65	116.32	120.35
2	B	9635	SAM	C3'-C2'-C1'	2.63	104.94	100.98
3	A	5600	DRA	C11-C18-C12	2.62	123.67	119.13
3	B	9600	DRA	C18-C12-C15	2.54	121.86	117.60
2	A	5635	SAM	C2'-C3'-C4'	2.46	107.42	102.64
3	A	5600	DRA	O14-C37-C38	-2.44	106.00	111.25
3	A	5600	DRA	O4'-C31-O11	2.43	117.72	109.86
3	A	5600	DRA	C13-C9-C10	2.35	116.22	112.21
2	A	5635	SAM	C2-N1-C6	2.35	122.77	118.75
2	B	9635	SAM	C2'-C3'-C4'	2.32	107.14	102.64
2	A	5635	SAM	O4'-C4'-C5'	2.30	114.69	108.88
3	A	5600	DRA	C9-C8-C7	-2.30	109.76	114.55
3	B	9600	DRA	C8'-N3'-C7'	2.29	117.13	110.38
3	A	5600	DRA	O13-C35-C34	2.27	112.69	106.79
2	A	5635	SAM	C1'-N9-C4	-2.22	122.74	126.64
3	B	9600	DRA	O4'-C4'-C3'	2.18	114.55	109.17
2	B	9635	SAM	O4'-C4'-C5'	2.07	114.12	108.88
3	A	5600	DRA	C40-C42-C39	2.04	119.64	116.42
3	A	5600	DRA	O5'-C5'-C6'	2.02	111.06	106.70

All (2) chirality outliers are listed below:

Mol	Chain	Res	Type	Atom
3	B	9600	DRA	C10
3	B	9600	DRA	C31

All (22) torsion outliers are listed below:

Mol	Chain	Res	Type	Atoms
3	B	9600	DRA	C14-C13-C9-C10
3	B	9600	DRA	C14-C13-C9-O9
3	B	9600	DRA	C14-C13-C9-C8
3	B	9600	DRA	C2'-C1'-O7-C7
3	B	9600	DRA	O5'-C1'-O7-C7
3	B	9600	DRA	C32-C31-O4'-C4'
3	B	9600	DRA	O14-C37-O13-C35
3	B	9600	DRA	C38-C37-O13-C35
3	A	5600	DRA	C14-C13-C9-C10
3	A	5600	DRA	C14-C13-C9-O9
3	A	5600	DRA	C14-C13-C9-C8

*Continued on next page...*

*Continued from previous page...*

Mol	Chain	Res	Type	Atoms
3	A	5600	DRA	C2'-C1'-O7-C7
3	A	5600	DRA	O5'-C1'-O7-C7
3	A	5600	DRA	C32-C31-O4'-C4'
3	B	9600	DRA	C33-C35-O13-C37
3	A	5600	DRA	C33-C35-O13-C37
3	A	5600	DRA	C38-C37-O13-C35
3	B	9600	DRA	C4'-C3'-N3'-C8'
3	A	5600	DRA	C4'-C3'-N3'-C8'
3	B	9600	DRA	O11-C31-O4'-C4'
3	A	5600	DRA	O14-C37-O13-C35
2	A	5635	SAM	N-CA-CB-CG

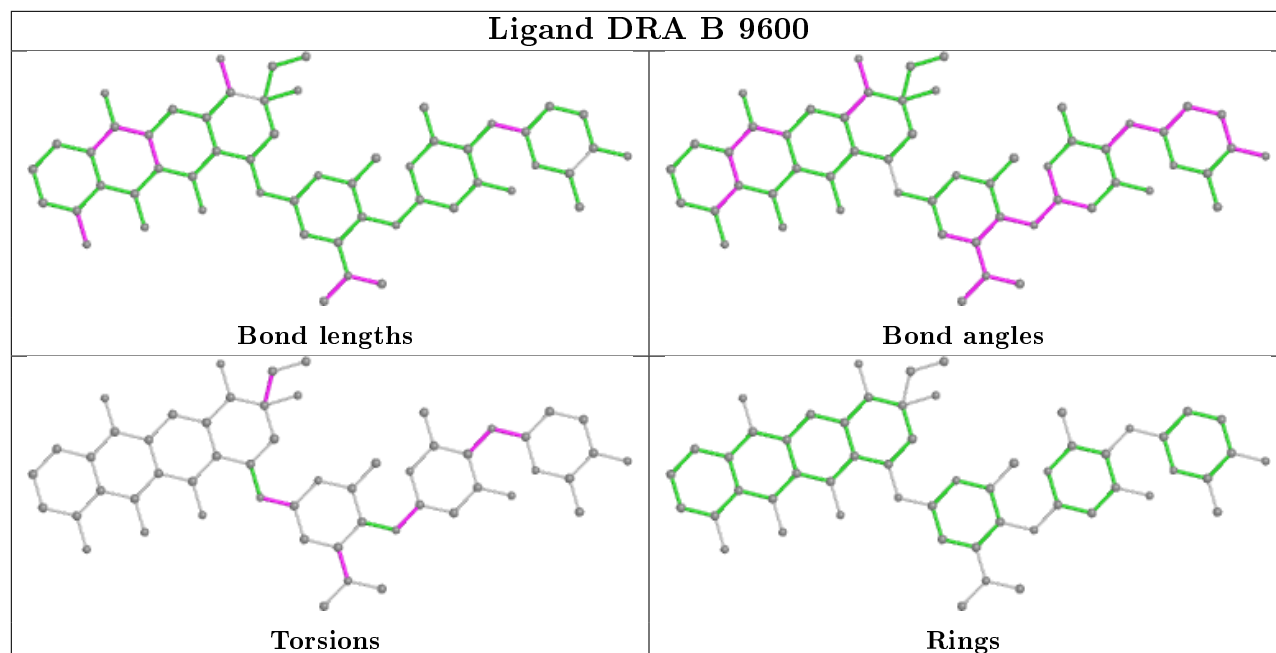
There are no ring outliers.

3 monomers are involved in 11 short contacts:

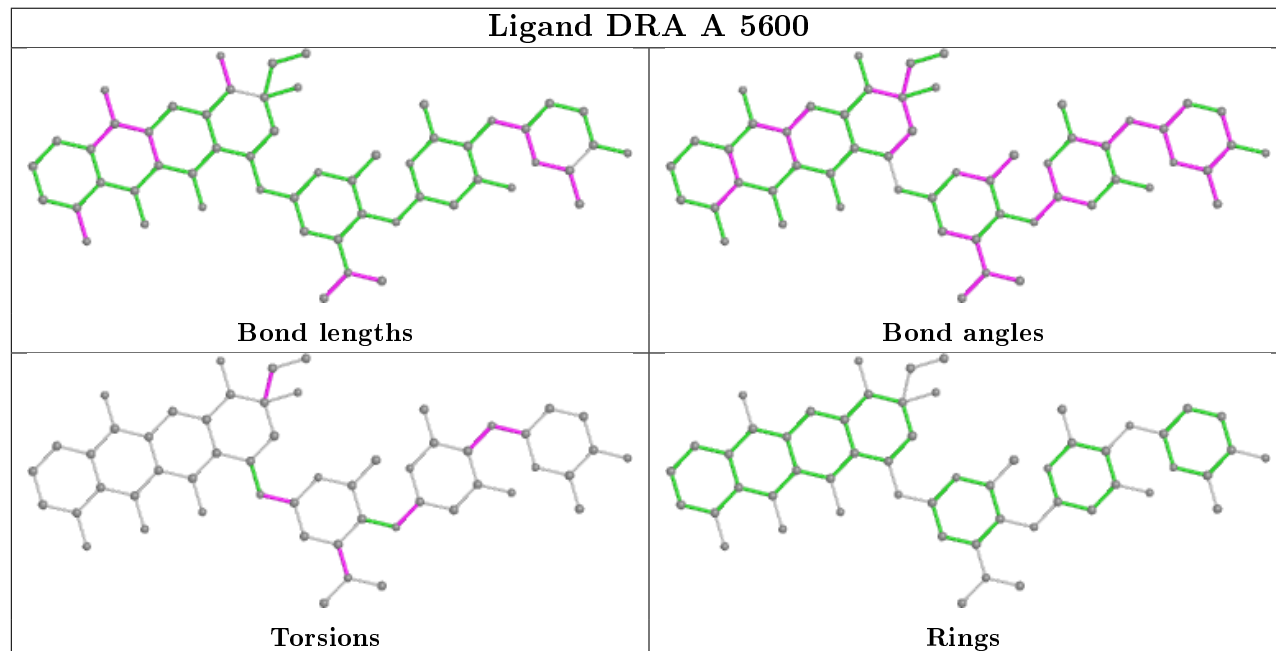
Mol	Chain	Res	Type	Clashes	Symm-Clashes
3	B	9600	DRA	7	0
3	A	5600	DRA	3	0
2	A	5635	SAM	2	0

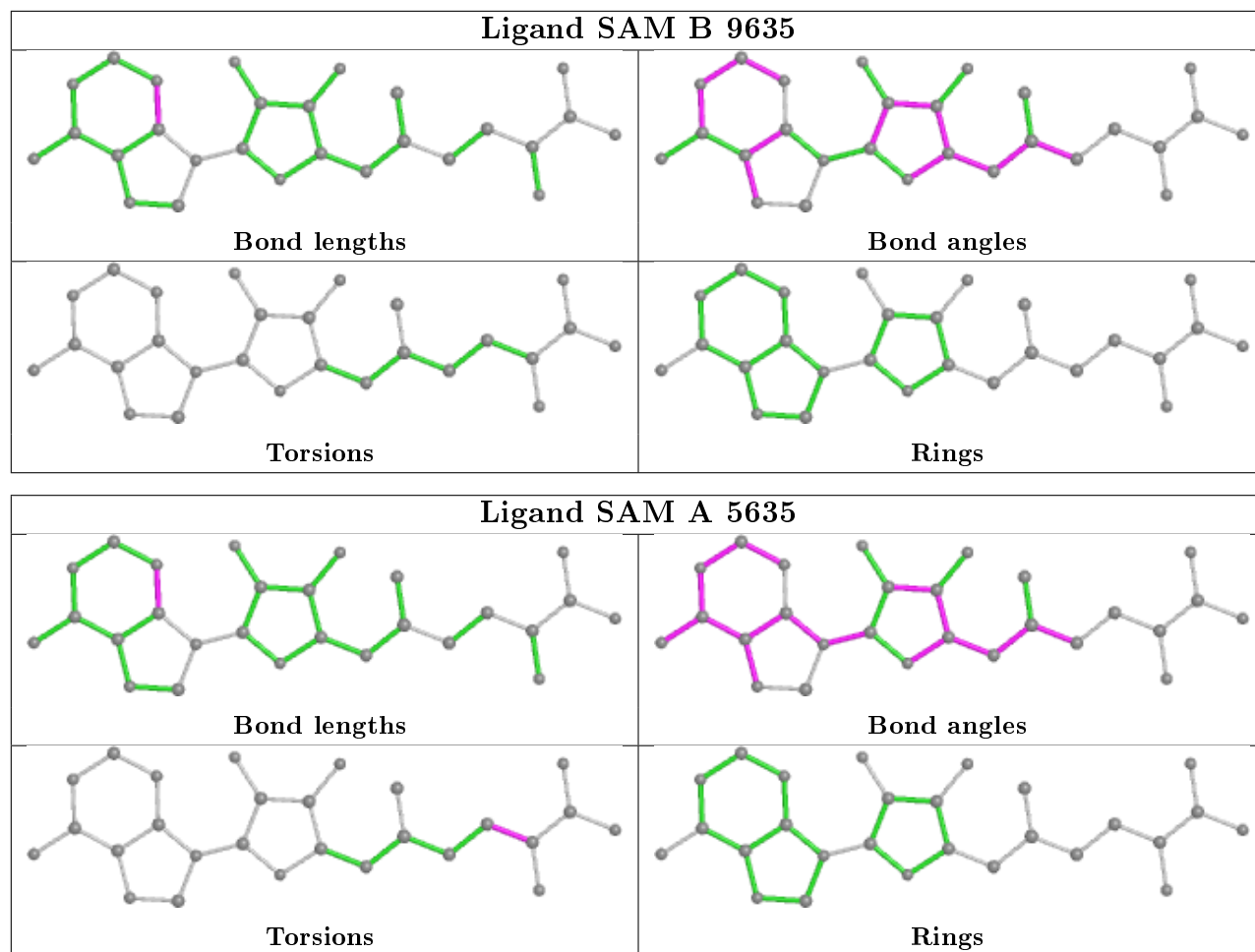
The following is a two-dimensional graphical depiction of Mogul quality analysis of bond lengths, bond angles, torsion angles, and ring geometry for all instances of the Ligand of Interest. In addition, ligands with molecular weight > 250 and outliers as shown on the validation Tables will also be included. For torsion angles, if less than 5% of the Mogul distribution of torsion angles is within 10 degrees of the torsion angle in question, then that torsion angle is considered an outlier. Any bond that is central to one or more torsion angles identified as an outlier by Mogul will be highlighted in the graph. For rings, the root-mean-square deviation (RMSD) between the ring in question and similar rings identified by Mogul is calculated over all ring torsion angles. If the average RMSD is greater than 60 degrees and the minimal RMSD between the ring in question and any Mogul-identified rings is also greater than 60 degrees, then that ring is considered an outlier. The outliers are highlighted in purple. The color gray indicates Mogul did not find sufficient equivalents in the CSD to analyse the geometry.

## Ligand DRA B 9600



## Ligand DRA A 5600





## 5.7 Other polymers [i](#)

There are no such residues in this entry.

## 5.8 Polymer linkage issues [i](#)

The following chains have linkage breaks:

Mol	Chain	Number of breaks
1	A	1

All chain breaks are listed below:

Model	Chain	Residue-1	Atom-1	Residue-2	Atom-2	Distance (Å)
1	A	80:GLU	C	81:GLY	N	1.14

## 6 Fit of model and data

### 6.1 Protein, DNA and RNA chains

In the following table, the column labelled ‘#RSRZ> 2’ contains the number (and percentage) of RSRZ outliers, followed by percent RSRZ outliers for the chain as percentile scores relative to all X-ray entries and entries of similar resolution. The OWAB column contains the minimum, median, 95<sup>th</sup> percentile and maximum values of the occupancy-weighted average B-factor per residue. The column labelled ‘Q< 0.9’ lists the number of (and percentage) of residues with an average occupancy less than 0.9.

Mol	Chain	Analysed	<RSRZ>	#RSRZ>2		OWAB(Å <sup>2</sup> )	Q<0.9
1	A	330/374 (88%)	0.26	19 (5%)	23 29	25, 38, 57, 68	9 (2%)
1	B	322/374 (86%)	0.50	22 (6%)	17 22	27, 43, 66, 73	4 (1%)
All	All	652/748 (87%)	0.38	41 (6%)	20 25	25, 40, 63, 73	13 (1%)

All (41) RSRZ outliers are listed below:

Mol	Chain	Res	Type	RSRZ
1	A	87	ARG	17.3
1	B	342	THR	8.4
1	B	343	THR	5.9
1	B	340	GLY	4.9
1	A	83	GLU	4.8
1	B	344	LEU	4.5
1	A	10	LEU	4.4
1	A	356	VAL	4.3
1	B	60	ASP	4.1
1	B	357	SER	4.0
1	B	90	ARG	3.9
1	A	292	GLU	3.8
1	B	341	SER	3.7
1	B	345	PRO	3.6
1	B	87	ARG	3.5
1	B	292	GLU	3.3
1	B	173	ALA	3.3
1	B	103	PRO	3.2
1	B	153	VAL	3.2
1	A	82	GLY	3.2
1	B	356	VAL	3.0
1	B	347	ASP	2.9
1	A	11	GLU	2.9
1	A	357	SER	2.9

*Continued on next page...*

*Continued from previous page...*

Mol	Chain	Res	Type	RSRZ
1	A	54	GLY	2.7
1	B	254	LEU	2.6
1	A	254	LEU	2.6
1	A	57	ASP	2.5
1	A	177	ALA	2.5
1	A	257	VAL	2.4
1	A	165	CYS	2.4
1	B	258	LEU	2.3
1	B	257	VAL	2.3
1	B	227	ASP	2.3
1	A	182	ALA	2.3
1	B	259	LEU	2.3
1	A	14	ASP	2.3
1	A	176	ASP	2.2
1	A	342	THR	2.1
1	A	295	GLY	2.1
1	B	316	VAL	2.1

## 6.2 Non-standard residues in protein, DNA, RNA chains ⓘ

There are no non-standard protein/DNA/RNA residues in this entry.

## 6.3 Carbohydrates ⓘ

There are no carbohydrates in this entry.

## 6.4 Ligands ⓘ

In the following table, the Atoms column lists the number of modelled atoms in the group and the number defined in the chemical component dictionary. The B-factors column lists the minimum, median, 95<sup>th</sup> percentile and maximum values of B factors of atoms in the group. The column labelled 'Q< 0.9' lists the number of atoms with occupancy less than 0.9.

Mol	Type	Chain	Res	Atoms	RSCC	RSR	B-factors( $\text{\AA}^2$ )	Q<0.9
3	DRA	B	9600	55/55	0.76	0.25	48,60,70,72	8
3	DRA	A	5600	55/55	0.79	0.21	41,57,70,70	8
2	SAM	B	9635	27/27	0.91	0.16	34,37,40,43	0
2	SAM	A	5635	27/27	0.95	0.14	26,30,38,38	0

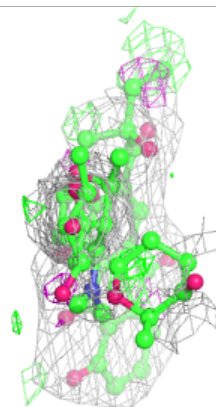
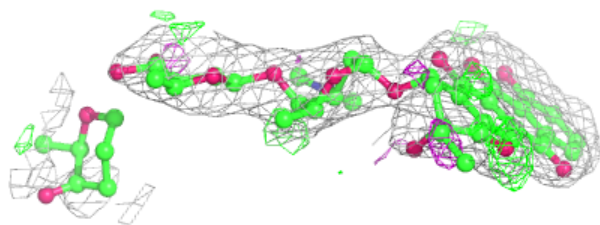
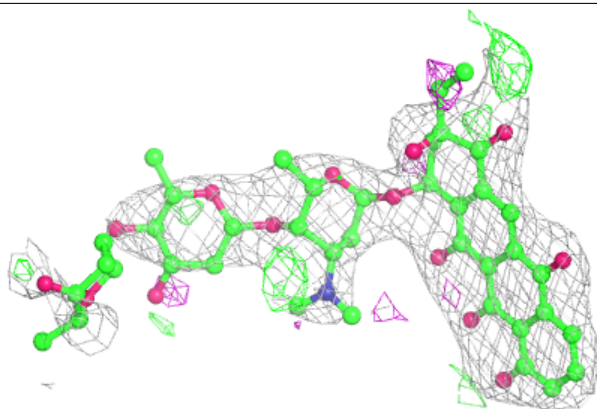
The following is a graphical depiction of the model fit to experimental electron density of all



instances of the Ligand of Interest. In addition, ligands with molecular weight > 250 and outliers as shown on the geometry validation Tables will also be included. Each fit is shown from different orientation to approximate a three-dimensional view.

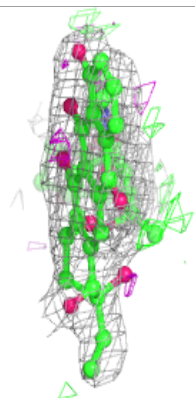
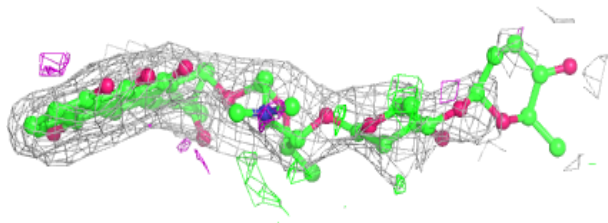
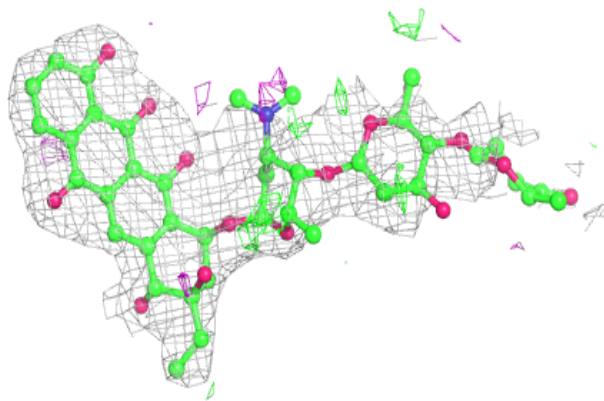
**Electron density around DRA B 9600:**

$2mF_o-DF_c$  (at 0.7 rmsd) in gray  
 $mF_o-DF_c$  (at 3 rmsd) in purple (negative)  
and green (positive)

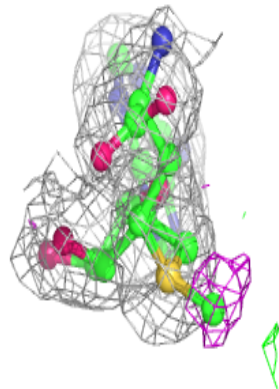
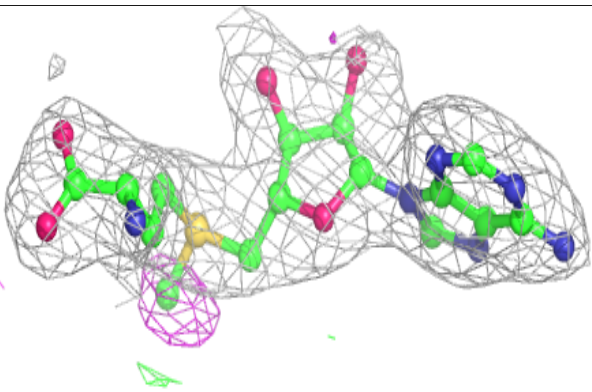
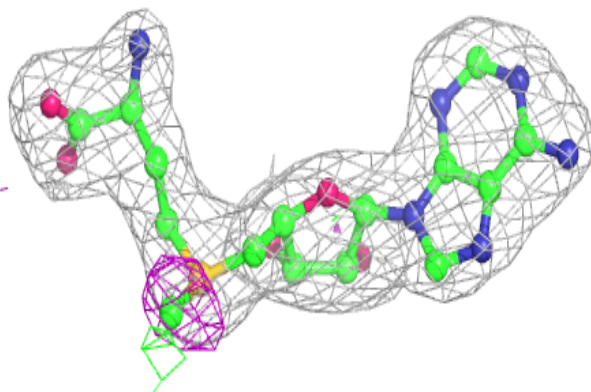


**Electron density around DRA A 5600:**

$2mF_o-DF_c$  (at 0.7 rmsd) in gray  
 $mF_o-DF_c$  (at 3 rmsd) in purple (negative)  
and green (positive)

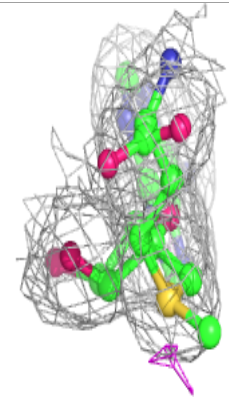
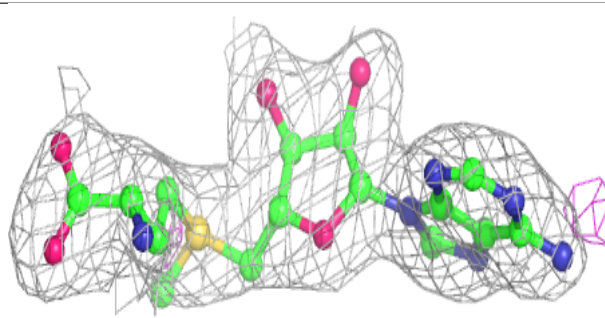
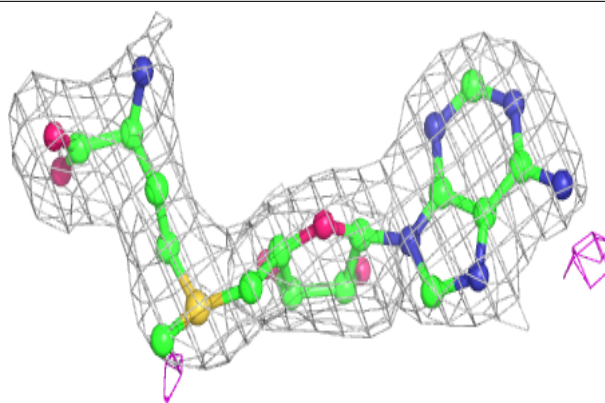
**Electron density around SAM B 9635:**

$2mF_o-DF_c$  (at 0.7 rmsd) in gray  
 $mF_o-DF_c$  (at 3 rmsd) in purple (negative)  
and green (positive)



**Electron density around SAM A 5635:**

$2mF_o-DF_c$  (at 0.7 rmsd) in gray  
 $mF_o-DF_c$  (at 3 rmsd) in purple (negative)  
and green (positive)



## 6.5 Other polymers [i](#)

There are no such residues in this entry.