



Full wwPDB X-ray Structure Validation Report ⓘ

May 29, 2020 – 05:03 pm BST

PDB ID : 2XFW
Title : Structure of the E192N mutant of E. coli N-acetylneuraminic acid lyase in complex with pyruvate in crystal form III
Authors : Campeotto, I.; Murshudov, G.N.; Bolt, A.H.; Trinh, C.H.; Phillips, S.E.V.; Nelson, A.; Pearson, A.R.; Berry, A.
Deposited on : 2010-05-28
Resolution : 1.65 Å(reported)

This is a Full wwPDB X-ray Structure Validation Report for a publicly released PDB entry.

We welcome your comments at validation@mail.wwpdb.org

A user guide is available at

<https://www.wwpdb.org/validation/2017/XrayValidationReportHelp>

with specific help available everywhere you see the ⓘ symbol.

The following versions of software and data (see [references ⓘ](#)) were used in the production of this report:

MolProbity : 4.02b-467
Mogul : 1.8.5 (274361), CSD as541be (2020)
Xtriage (Phenix) : 1.13
EDS : 2.11
Percentile statistics : 20191225.v01 (using entries in the PDB archive December 25th 2019)
Refmac : 5.8.0158
CCP4 : 7.0.044 (Gargrove)
Ideal geometry (proteins) : Engh & Huber (2001)
Ideal geometry (DNA, RNA) : Parkinson et al. (1996)
Validation Pipeline (wwPDB-VP) : 2.11

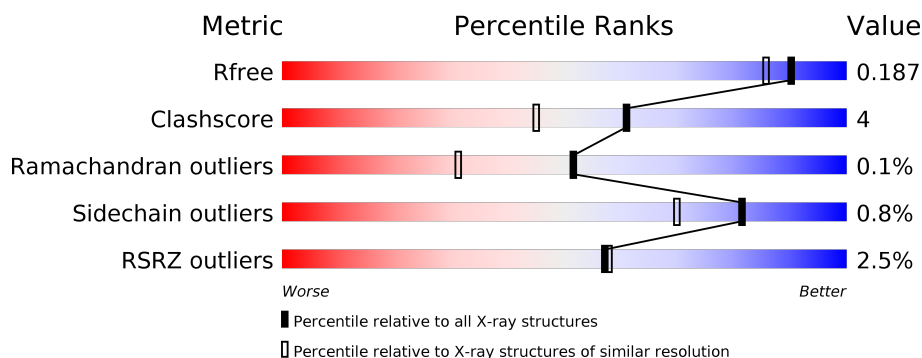
1 Overall quality at a glance ⓘ

The following experimental techniques were used to determine the structure:

X-RAY DIFFRACTION

The reported resolution of this entry is 1.65 Å.

Percentile scores (ranging between 0-100) for global validation metrics of the entry are shown in the following graphic. The table shows the number of entries on which the scores are based.



Metric	Whole archive (#Entries)	Similar resolution (#Entries, resolution range(Å))
R_{free}	130704	1827 (1.66-1.66)
Clashscore	141614	1931 (1.66-1.66)
Ramachandran outliers	138981	1891 (1.66-1.66)
Sidechain outliers	138945	1891 (1.66-1.66)
RSRZ outliers	127900	1791 (1.66-1.66)

The table below summarises the geometric issues observed across the polymeric chains and their fit to the electron density. The red, orange, yellow and green segments on the lower bar indicate the fraction of residues that contain outliers for ≥ 3 , 2, 1 and 0 types of geometric quality criteria respectively. A grey segment represents the fraction of residues that are not modelled. The numeric value for each fraction is indicated below the corresponding segment, with a dot representing fractions $\leq 5\%$. The upper red bar (where present) indicates the fraction of residues that have poor fit to the electron density. The numeric value is given above the bar.

Mol	Chain	Length	Quality of chain
1	A	304	<div> <div>3%</div> <div> <div></div> <div>87%</div> <div>11%</div> <div></div> </div> </div>
1	B	304	<div> <div>2%</div> <div> <div></div> <div>88%</div> <div>10%</div> <div></div> </div> </div>
1	C	304	<div> <div>3%</div> <div> <div></div> <div>89%</div> <div>9%</div> <div></div> </div> </div>
1	D	304	<div> <div>2%</div> <div> <div></div> <div>91%</div> <div>8%</div> <div></div> </div> </div>

2 Entry composition

There are 4 unique types of molecules in this entry. The entry contains 10447 atoms, of which 0 are hydrogens and 0 are deuteriums.

In the tables below, the ZeroOcc column contains the number of atoms modelled with zero occupancy, the AltConf column contains the number of residues with at least one atom in alternate conformation and the Trace column contains the number of residues modelled with at most 2 atoms.

- Molecule 1 is a protein called N-ACETYLNEURAMINIC ACID LYASE.

Mol	Chain	Residues	Atoms					ZeroOcc	AltConf	Trace
1	A	299	Total	C	N	O	S	0	6	0
			2351	1497	402	441	11			
1	B	298	Total	C	N	O	S	0	8	0
			2360	1507	402	439	12			
1	C	299	Total	C	N	O	S	0	5	0
			2345	1494	400	440	11			
1	D	299	Total	C	N	O	S	0	5	0
			2347	1494	402	440	11			

There are 36 discrepancies between the modelled and reference sequences:

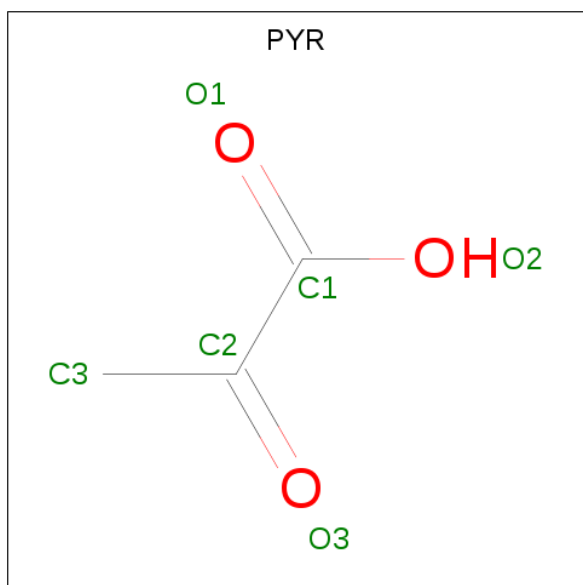
Chain	Residue	Modelled	Actual	Comment	Reference
A	-6	MET	-	expression tag	UNP B7M0T7
A	-5	GLU	-	expression tag	UNP B7M0T7
A	-4	HIS	-	expression tag	UNP B7M0T7
A	-3	HIS	-	expression tag	UNP B7M0T7
A	-2	HIS	-	expression tag	UNP B7M0T7
A	-1	HIS	-	expression tag	UNP B7M0T7
A	0	HIS	-	expression tag	UNP B7M0T7
A	1	HIS	-	expression tag	UNP B7M0T7
A	192	ASN	GLU	engineered mutation	UNP B7M0T7
B	-6	MET	-	expression tag	UNP B7M0T7
B	-5	GLU	-	expression tag	UNP B7M0T7
B	-4	HIS	-	expression tag	UNP B7M0T7
B	-3	HIS	-	expression tag	UNP B7M0T7
B	-2	HIS	-	expression tag	UNP B7M0T7
B	-1	HIS	-	expression tag	UNP B7M0T7
B	0	HIS	-	expression tag	UNP B7M0T7
B	1	HIS	-	expression tag	UNP B7M0T7
B	192	ASN	GLU	engineered mutation	UNP B7M0T7
C	-6	MET	-	expression tag	UNP B7M0T7
C	-5	GLU	-	expression tag	UNP B7M0T7
C	-4	HIS	-	expression tag	UNP B7M0T7

Continued on next page...

Continued from previous page...

Chain	Residue	Modelled	Actual	Comment	Reference
C	-3	HIS	-	expression tag	UNP B7M0T7
C	-2	HIS	-	expression tag	UNP B7M0T7
C	-1	HIS	-	expression tag	UNP B7M0T7
C	0	HIS	-	expression tag	UNP B7M0T7
C	1	HIS	-	expression tag	UNP B7M0T7
C	192	ASN	GLU	engineered mutation	UNP B7M0T7
D	-6	MET	-	expression tag	UNP B7M0T7
D	-5	GLU	-	expression tag	UNP B7M0T7
D	-4	HIS	-	expression tag	UNP B7M0T7
D	-3	HIS	-	expression tag	UNP B7M0T7
D	-2	HIS	-	expression tag	UNP B7M0T7
D	-1	HIS	-	expression tag	UNP B7M0T7
D	0	HIS	-	expression tag	UNP B7M0T7
D	1	HIS	-	expression tag	UNP B7M0T7
D	192	ASN	GLU	engineered mutation	UNP B7M0T7

- Molecule 2 is PYRUVIC ACID (three-letter code: PYR) (formula: $C_3H_4O_3$).



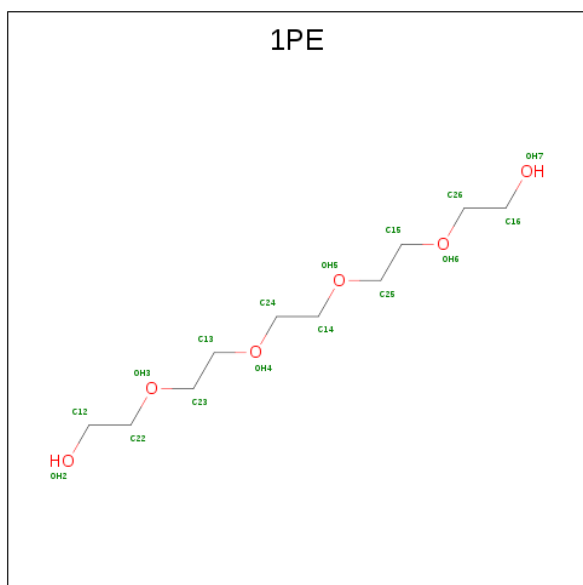
Mol	Chain	Residues	Atoms			ZeroOcc	AltConf
2	A	1	Total	C	O	0	0
			6	3	3		
2	B	1	Total	C	O	0	0
			6	3	3		
2	C	1	Total	C	O	0	0
			6	3	3		
2	C	1	Total	C	O	0	0
			6	3	3		

Continued on next page...

Continued from previous page...

Mol	Chain	Residues	Atoms			ZeroOcc	AltConf
2	C	1	Total	C	O	0	0
			6	3	3		
2	D	1	Total	C	O	0	0
			6	3	3		

- Molecule 3 is PENTAETHYLENE GLYCOL (three-letter code: 1PE) (formula: $C_{10}H_{22}O_6$).



Mol	Chain	Residues	Atoms			ZeroOcc	AltConf
3	A	1	Total	C	O	0	0
			8	5	3		
3	A	1	Total	C	O	0	0
			8	5	3		
3	D	1	Total	C	O	0	0
			7	4	3		
3	D	1	Total	C	O	0	0
			8	5	3		

- Molecule 4 is water.

Mol	Chain	Residues	Atoms		ZeroOcc	AltConf
4	A	256	Total	O	0	0
			256	256		
4	B	221	Total	O	0	0
			221	221		
4	C	242	Total	O	0	0
			242	242		

Continued on next page...

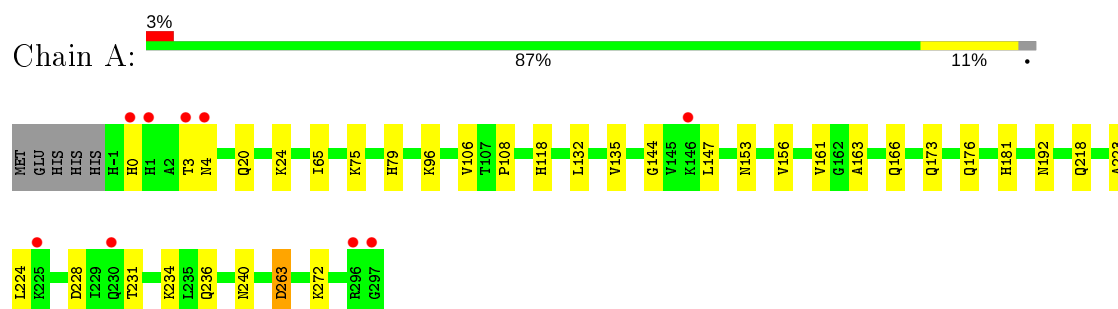
Continued from previous page...

Mol	Chain	Residues	Atoms		ZeroOcc	AltConf
4	D	258	Total	O	0	0
			258	258		

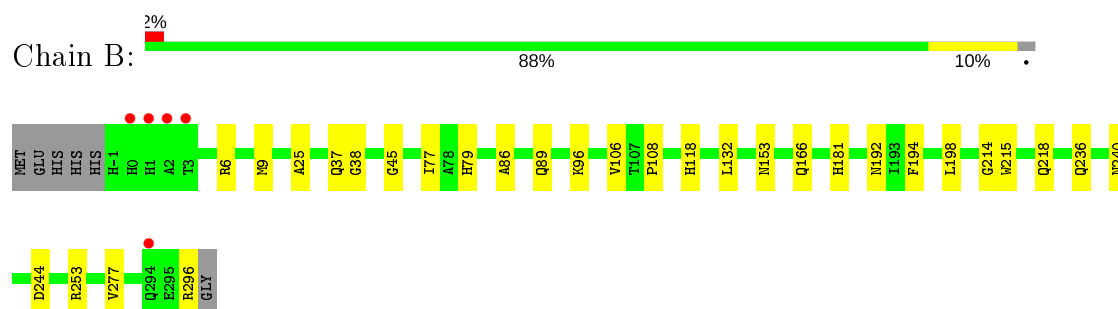
3 Residue-property plots [i](#)

These plots are drawn for all protein, RNA and DNA chains in the entry. The first graphic for a chain summarises the proportions of the various outlier classes displayed in the second graphic. The second graphic shows the sequence view annotated by issues in geometry and electron density. Residues are color-coded according to the number of geometric quality criteria for which they contain at least one outlier: green = 0, yellow = 1, orange = 2 and red = 3 or more. A red dot above a residue indicates a poor fit to the electron density ($RSRZ > 2$). Stretches of 2 or more consecutive residues without any outlier are shown as a green connector. Residues present in the sample, but not in the model, are shown in grey.

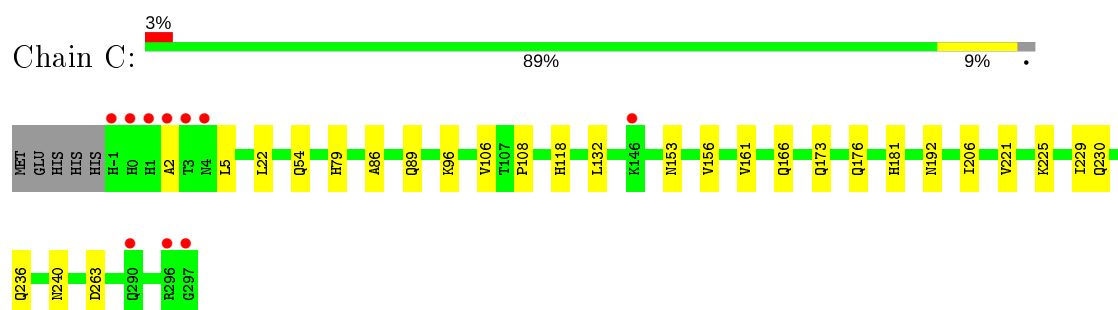
• Molecule 1: N-ACETYLNEURAMINIC ACID LYASE



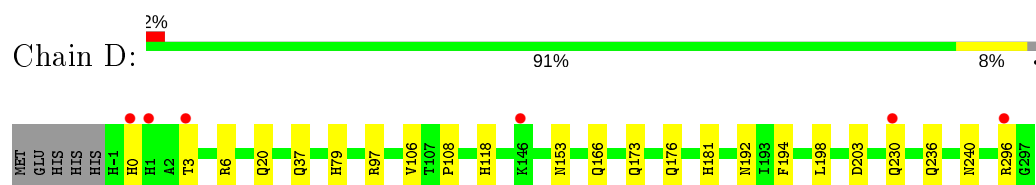
• Molecule 1: N-ACETYLNEURAMINIC ACID LYASE



• Molecule 1: N-ACETYLNEURAMINIC ACID LYASE



• Molecule 1: N-ACETYLNEURAMINIC ACID LYASE



4 Data and refinement statistics

Property	Value	Source
Space group	P 1 21 1	Depositor
Cell constants a, b, c, α , β , γ	78.11Å 116.53Å 83.74Å 90.00° 117.95° 90.00°	Depositor
Resolution (Å)	73.98 – 1.65 35.25 – 1.65	Depositor EDS
% Data completeness (in resolution range)	99.1 (73.98-1.65) 99.3 (35.25-1.65)	Depositor EDS
R_{merge}	0.09	Depositor
R_{sym}	(Not available)	Depositor
$\langle I/\sigma(I) \rangle$ ¹	1.85 (at 1.64Å)	Xtriage
Refinement program	REFMAC 5.5.0097	Depositor
R, R_{free}	0.156 , 0.182 0.164 , 0.187	Depositor DCC
R_{free} test set	7980 reflections (5.02%)	wwPDB-VP
Wilson B-factor (Å ²)	13.5	Xtriage
Anisotropy	0.044	Xtriage
Bulk solvent k_{sol} (e/Å ³), B_{sol} (Å ²)	0.35 , 46.1	EDS
L-test for twinning ²	$\langle L \rangle = 0.51$, $\langle L^2 \rangle = 0.35$	Xtriage
Estimated twinning fraction	0.128 for h,-k,-h-l	Xtriage
Reported twinning fraction	0.904 for H, K, L 0.096 for -H, -K, H+L	Depositor
Outliers	0 of 158864 reflections	Xtriage
F_o, F_c correlation	0.96	EDS
Total number of atoms	10447	wwPDB-VP
Average B, all atoms (Å ²)	14.0	wwPDB-VP

Xtriage's analysis on translational NCS is as follows: *The largest off-origin peak in the Patterson function is 4.37% of the height of the origin peak. No significant pseudotranslation is detected.*

¹Intensities estimated from amplitudes.

²Theoretical values of $\langle |L| \rangle$, $\langle L^2 \rangle$ for acentric reflections are 0.5, 0.333 respectively for untwinned datasets, and 0.375, 0.2 for perfectly twinned datasets.

5 Model quality [i](#)

5.1 Standard geometry [i](#)

Bond lengths and bond angles in the following residue types are not validated in this section: KPI, PYR, 1PE

The Z score for a bond length (or angle) is the number of standard deviations the observed value is removed from the expected value. A bond length (or angle) with $|Z| > 5$ is considered an outlier worth inspection. RMSZ is the root-mean-square of all Z scores of the bond lengths (or angles).

Mol	Chain	Bond lengths		Bond angles	
		RMSZ	$\# Z > 5$	RMSZ	$\# Z > 5$
1	A	0.52	0/2397	0.65	0/3243
1	B	0.48	0/2412	0.64	1/3261 (0.0%)
1	C	0.49	0/2388	0.64	0/3231
1	D	0.50	0/2390	0.66	0/3233
All	All	0.50	0/9587	0.65	1/12968 (0.0%)

There are no bond length outliers.

All (1) bond angle outliers are listed below:

Mol	Chain	Res	Type	Atoms	Z	Observed(°)	Ideal(°)
1	B	244	ASP	CB-CG-OD1	5.54	123.28	118.30

There are no chirality outliers.

There are no planarity outliers.

5.2 Too-close contacts [i](#)

In the following table, the Non-H and H(model) columns list the number of non-hydrogen atoms and hydrogen atoms in the chain respectively. The H(added) column lists the number of hydrogen atoms added and optimized by MolProbity. The Clashes column lists the number of clashes within the asymmetric unit, whereas Symm-Clashes lists symmetry related clashes.

Mol	Chain	Non-H	H(model)	H(added)	Clashes	Symm-Clashes
1	A	2351	0	2375	28	0
1	B	2360	0	2400	24	0
1	C	2345	0	2368	17	0
1	D	2347	0	2368	16	0
2	A	6	0	3	0	0
2	B	6	0	3	0	0

Continued on next page...

Continued from previous page...

Mol	Chain	Non-H	H(model)	H(added)	Clashes	Symm-Clashes
2	C	18	0	9	0	0
2	D	6	0	3	0	0
3	A	16	0	18	2	0
3	D	15	0	18	3	0
4	A	256	0	0	2	0
4	B	221	0	0	1	0
4	C	242	0	0	2	0
4	D	258	0	0	6	0
All	All	10447	0	9565	85	0

The all-atom clashscore is defined as the number of clashes found per 1000 atoms (including hydrogen atoms). The all-atom clashscore for this structure is 4.

All (85) close contacts within the same asymmetric unit are listed below, sorted by their clash magnitude.

Atom-1	Atom-2	Interatomic distance (Å)	Clash overlap (Å)
1:B:9[B]:MET:CE	1:B:77:ILE:HD11	1.84	1.06
1:B:9[B]:MET:HE1	1:B:77:ILE:HD11	1.44	0.99
1:D:37:GLN:NE2	4:D:2042:HOH:O	2.04	0.90
1:B:9[B]:MET:HE3	1:B:77:ILE:HD11	1.60	0.82
1:B:9[B]:MET:CE	1:B:77:ILE:CD1	2.58	0.80
1:C:79:HIS:HE1	1:C:106:VAL:H	1.30	0.80
1:D:79:HIS:HE1	1:D:106:VAL:H	1.33	0.76
1:A:79:HIS:HE1	1:A:106:VAL:H	1.33	0.75
1:B:79:HIS:HE1	1:B:106:VAL:H	1.34	0.74
1:B:96[B]:LYS:HD3	1:B:132:LEU:HD13	1.68	0.73
1:B:9[B]:MET:HE1	1:B:77:ILE:CD1	2.15	0.73
1:A:224:LEU:O	1:C:229:ILE:HD12	1.89	0.71
1:A:4:ASN:HD22	1:A:75:LYS:NZ	1.89	0.70
1:B:9[B]:MET:HE3	1:B:77:ILE:CD1	2.20	0.69
1:A:218:GLN:NE2	4:A:2193:HOH:O	2.26	0.68
1:A:223:ALA:CB	1:A:231[A]:THR:HG23	2.26	0.66
1:A:173:GLN:HA	1:A:176:GLN:HE21	1.60	0.65
1:C:173:GLN:HA	1:C:176:GLN:HE21	1.64	0.63
1:A:4:ASN:HD22	1:A:75:LYS:HZ1	1.47	0.62
1:B:215:TRP:CE3	1:B:296:ARG:HD3	2.33	0.62
1:D:173:GLN:HA	1:D:176:GLN:HE21	1.65	0.61
1:D:6:ARG:NE	1:D:203:ASP:OD2	2.35	0.59
1:A:20[B]:GLN:HE22	1:A:272:LYS:H	1.50	0.59
1:D:296:ARG:NE	4:D:2255:HOH:O	2.37	0.58
1:B:38:GLY:O	1:B:218[B]:GLN:NE2	2.34	0.58

Continued on next page...

Continued from previous page...

Atom-1	Atom-2	Interatomic distance (Å)	Clash overlap (Å)
1:D:97[A]:ARG:NH2	4:D:2111:HOH:O	2.36	0.57
1:B:96[B]:LYS:HD3	1:B:132:LEU:CD1	2.35	0.56
1:A:223:ALA:HB1	1:A:231[A]:THR:HG23	1.88	0.56
1:A:192:ASN:HA	1:A:240:ASN:HD21	1.73	0.54
1:B:25:ALA:HB1	4:B:2032:HOH:O	2.07	0.53
1:B:108:PRO:HD2	1:B:118:HIS:HD2	1.74	0.53
1:B:153:ASN:OD1	1:B:181:HIS:HE1	1.92	0.53
1:A:0:HIS:O	1:A:3:THR:OG1	2.27	0.51
1:A:223:ALA:HB1	1:A:231[A]:THR:CG2	2.41	0.50
1:A:223:ALA:HB2	1:A:231[A]:THR:HG23	1.93	0.50
1:B:192:ASN:HA	1:B:240:ASN:HD21	1.77	0.48
1:A:153:ASN:OD1	1:A:181:HIS:HE1	1.96	0.48
1:C:156:VAL:HA	1:C:161:VAL:HG11	1.95	0.48
1:D:0:HIS:HA	1:D:3:THR:HG23	1.96	0.48
1:C:79:HIS:CE1	1:C:106:VAL:H	2.20	0.48
1:A:135:VAL:HG22	1:A:163:ALA:HB3	1.95	0.48
1:C:96:LYS:HD3	1:C:132:LEU:HD13	1.95	0.48
1:D:181:HIS:HD2	4:D:2001:HOH:O	1.97	0.47
1:D:108:PRO:HD2	1:D:118:HIS:HD2	1.80	0.47
1:C:192:ASN:HA	1:C:240:ASN:HD21	1.80	0.47
1:D:153:ASN:OD1	1:D:181:HIS:HE1	1.97	0.47
1:A:263:ASP:HA	3:A:1299:1PE:H221	1.95	0.47
1:A:223:ALA:CB	1:A:231[A]:THR:CG2	2.93	0.47
1:D:236:GLN:HE21	1:D:240:ASN:ND2	2.13	0.47
1:B:79:HIS:CE1	1:B:106:VAL:H	2.24	0.47
1:C:118:HIS:HE1	4:C:2119:HOH:O	1.98	0.47
1:C:108:PRO:HD2	1:C:118:HIS:HD2	1.81	0.46
1:A:96:LYS:HD3	1:A:132:LEU:HD13	1.97	0.46
1:C:86:ALA:HA	1:C:89:GLN:HE21	1.81	0.46
1:A:228:ASP:CG	1:A:231[A]:THR:HG22	2.37	0.46
1:C:96:LYS:HE2	4:C:2137:HOH:O	2.16	0.45
1:C:153:ASN:OD1	1:C:181:HIS:HE1	1.99	0.45
1:A:156:VAL:HA	1:A:161:VAL:HG11	1.98	0.45
1:B:236:GLN:HE21	1:B:240:ASN:ND2	2.15	0.45
1:D:20:GLN:NE2	4:D:2018:HOH:O	2.49	0.45
1:B:194:PHE:CE2	1:B:198:LEU:HD11	2.52	0.45
1:D:192:ASN:HA	1:D:240:ASN:HD21	1.82	0.45
1:A:108:PRO:HD2	1:A:118:HIS:HD2	1.83	0.44
1:B:45:GLY:O	1:B:79:HIS:HD2	2.01	0.44
1:C:22:LEU:HD21	1:C:54[B]:GLN:HE21	1.83	0.43
1:D:194:PHE:CE2	1:D:198:LEU:HD11	2.54	0.43

Continued on next page...

Continued from previous page...

Atom-1	Atom-2	Interatomic distance (Å)	Clash overlap (Å)
1:B:37:GLN:HE22	1:B:214:GLY:H	1.66	0.43
1:C:2:ALA:HB1	1:C:5:LEU:HD12	2.01	0.42
1:D:236:GLN:HE21	1:D:240:ASN:HD21	1.68	0.42
1:C:236:GLN:HE21	1:C:240:ASN:ND2	2.18	0.42
1:A:75:LYS:HE2	3:A:1300:1PE:H222	2.02	0.42
1:A:24:LYS:HD3	1:A:65:ILE:HD11	2.01	0.42
1:A:144:GLY:HA2	3:D:1300:1PE:H131	2.02	0.42
1:C:221:VAL:HG12	1:C:225:LYS:HE3	2.02	0.41
1:A:236:GLN:HE21	1:A:240:ASN:ND2	2.17	0.41
1:B:6:ARG:HE	1:B:6:ARG:HB2	1.66	0.41
1:B:96[A]:LYS:HD3	1:B:132:LEU:HD13	2.02	0.41
1:B:86:ALA:HA	1:B:89:GLN:HE21	1.86	0.41
1:A:144:GLY:CA	3:D:1300:1PE:H131	2.51	0.41
1:B:253:ARG:HG3	1:B:277:VAL:HG22	2.03	0.40
1:A:234:LYS:HG2	4:A:2195:HOH:O	2.21	0.40
1:D:37:GLN:CG	4:D:2255:HOH:O	2.69	0.40
3:D:1300:1PE:H132	3:D:1300:1PE:H221	1.66	0.40

There are no symmetry-related clashes.

5.3 Torsion angles ⓘ

5.3.1 Protein backbone ⓘ

In the following table, the Percentiles column shows the percent Ramachandran outliers of the chain as a percentile score with respect to all X-ray entries followed by that with respect to entries of similar resolution.

The Analysed column shows the number of residues for which the backbone conformation was analysed, and the total number of residues.

Mol	Chain	Analysed	Favoured	Allowed	Outliers	Percentiles	
1	A	302/304 (99%)	297 (98%)	4 (1%)	1 (0%)	41	22
1	B	303/304 (100%)	298 (98%)	5 (2%)	0	100	100
1	C	301/304 (99%)	294 (98%)	7 (2%)	0	100	100
1	D	301/304 (99%)	296 (98%)	5 (2%)	0	100	100
All	All	1207/1216 (99%)	1185 (98%)	21 (2%)	1 (0%)	51	31

All (1) Ramachandran outliers are listed below:

Mol	Chain	Res	Type
1	A	147	LEU

5.3.2 Protein sidechains ⓘ

In the following table, the Percentiles column shows the percent sidechain outliers of the chain as a percentile score with respect to all X-ray entries followed by that with respect to entries of similar resolution.

The Analysed column shows the number of residues for which the sidechain conformation was analysed, and the total number of residues.

Mol	Chain	Analysed	Rotameric	Outliers	Percentiles	
1	A	251/250 (100%)	249 (99%)	2 (1%)	81	70
1	B	253/250 (101%)	252 (100%)	1 (0%)	91	85
1	C	250/250 (100%)	247 (99%)	3 (1%)	71	53
1	D	250/250 (100%)	248 (99%)	2 (1%)	81	70
All	All	1004/1000 (100%)	996 (99%)	8 (1%)	81	70

All (8) residues with a non-rotameric sidechain are listed below:

Mol	Chain	Res	Type
1	A	166	GLN
1	A	263	ASP
1	B	166	GLN
1	C	166	GLN
1	C	230	GLN
1	C	263	ASP
1	D	166	GLN
1	D	230	GLN

Some sidechains can be flipped to improve hydrogen bonding and reduce clashes. All (41) such sidechains are listed below:

Mol	Chain	Res	Type
1	A	4	ASN
1	A	79	HIS
1	A	118	HIS
1	A	138	ASN
1	A	166	GLN
1	A	176	GLN
1	A	181	HIS
1	A	218	GLN

Continued on next page...

Continued from previous page...

Mol	Chain	Res	Type
1	A	240	ASN
1	A	260	HIS
1	B	32	GLN
1	B	37	GLN
1	B	79	HIS
1	B	89	GLN
1	B	118	HIS
1	B	138	ASN
1	B	166	GLN
1	B	181	HIS
1	B	240	ASN
1	B	260	HIS
1	C	79	HIS
1	C	89	GLN
1	C	118	HIS
1	C	138	ASN
1	C	166	GLN
1	C	176	GLN
1	C	181	HIS
1	C	240	ASN
1	C	260	HIS
1	C	294	GLN
1	D	0	HIS
1	D	37	GLN
1	D	79	HIS
1	D	118	HIS
1	D	138	ASN
1	D	166	GLN
1	D	176	GLN
1	D	181	HIS
1	D	230	GLN
1	D	240	ASN
1	D	260	HIS

5.3.3 RNA ⓘ

There are no RNA molecules in this entry.

5.4 Non-standard residues in protein, DNA, RNA chains ⓘ

4 non-standard protein/DNA/RNA residues are modelled in this entry.

In the following table, the Counts columns list the number of bonds (or angles) for which Mogul statistics could be retrieved, the number of bonds (or angles) that are observed in the model and the number of bonds (or angles) that are defined in the Chemical Component Dictionary. The Link column lists molecule types, if any, to which the group is linked. The Z score for a bond length (or angle) is the number of standard deviations the observed value is removed from the expected value. A bond length (or angle) with $|Z| > 2$ is considered an outlier worth inspection. RMSZ is the root-mean-square of all Z scores of the bond lengths (or angles).

Mol	Type	Chain	Res	Link	Bond lengths			Bond angles		
					Counts	RMSZ	$\# Z > 2$	Counts	RMSZ	$\# Z > 2$
1	KPI	C	165	1	10,13,14	0.61	0	6,15,17	1.32	1 (16%)
1	KPI	A	165	1	10,13,14	0.77	0	6,15,17	0.79	0
1	KPI	D	165	1	10,13,14	0.86	0	6,15,17	0.91	0
1	KPI	B	165	1	10,13,14	0.97	0	6,15,17	0.90	0

In the following table, the Chirals column lists the number of chiral outliers, the number of chiral centers analysed, the number of these observed in the model and the number defined in the Chemical Component Dictionary. Similar counts are reported in the Torsion and Rings columns. '-' means no outliers of that kind were identified.

Mol	Type	Chain	Res	Link	Chirals	Torsions	Rings
1	KPI	C	165	1	-	1/9/14/16	-
1	KPI	A	165	1	-	2/9/14/16	-
1	KPI	D	165	1	-	1/9/14/16	-
1	KPI	B	165	1	-	1/9/14/16	-

There are no bond length outliers.

All (1) bond angle outliers are listed below:

Mol	Chain	Res	Type	Atoms	Z	Observed(°)	Ideal(°)
1	C	165	KPI	C1-CX1-CX2	2.98	121.22	117.92

There are no chirality outliers.

All (5) torsion outliers are listed below:

Mol	Chain	Res	Type	Atoms
1	C	165	KPI	C1-CX1-NZ-CE
1	A	165	KPI	C1-CX1-NZ-CE
1	A	165	KPI	CX2-CX1-NZ-CE
1	D	165	KPI	C1-CX1-NZ-CE
1	B	165	KPI	C1-CX1-NZ-CE

There are no ring outliers.

No monomer is involved in short contacts.

5.5 Carbohydrates [i](#)

There are no carbohydrates in this entry.

5.6 Ligand geometry [i](#)

10 ligands are modelled in this entry.

In the following table, the Counts columns list the number of bonds (or angles) for which Mogul statistics could be retrieved, the number of bonds (or angles) that are observed in the model and the number of bonds (or angles) that are defined in the Chemical Component Dictionary. The Link column lists molecule types, if any, to which the group is linked. The Z score for a bond length (or angle) is the number of standard deviations the observed value is removed from the expected value. A bond length (or angle) with $|Z| > 2$ is considered an outlier worth inspection. RMSZ is the root-mean-square of all Z scores of the bond lengths (or angles).

Mol	Type	Chain	Res	Link	Bond lengths			Bond angles		
					Counts	RMSZ	$\# Z > 2$	Counts	RMSZ	$\# Z > 2$
3	1PE	D	1299	-	6,6,15	0.50	0	5,5,14	0.47	0
2	PYR	A	1298	-	2,5,5	1.99	1 (50%)	2,6,6	1.01	0
2	PYR	D	1298	-	2,5,5	2.14	1 (50%)	2,6,6	0.83	0
3	1PE	A	1299	-	7,7,15	0.57	0	6,6,14	0.34	0
2	PYR	C	1300	-	2,5,5	1.98	1 (50%)	2,6,6	0.19	0
3	1PE	D	1300	-	7,7,15	0.75	0	6,6,14	0.86	0
3	1PE	A	1300	-	7,7,15	0.67	0	6,6,14	0.26	0
2	PYR	C	1298	-	2,5,5	2.02	1 (50%)	2,6,6	0.86	0
2	PYR	C	1299	-	2,5,5	1.91	1 (50%)	2,6,6	0.33	0
2	PYR	B	1297	-	2,5,5	1.88	1 (50%)	2,6,6	0.65	0

In the following table, the Chirals column lists the number of chiral outliers, the number of chiral centers analysed, the number of these observed in the model and the number defined in the Chemical Component Dictionary. Similar counts are reported in the Torsion and Rings columns. '-' means no outliers of that kind were identified.

Mol	Type	Chain	Res	Link	Chirals	Torsions	Rings
3	1PE	D	1299	-	-	1/4/4/13	-
2	PYR	A	1298	-	-	0/0/4/4	-
2	PYR	D	1298	-	-	0/0/4/4	-
3	1PE	A	1299	-	-	4/5/5/13	-
2	PYR	C	1300	-	-	0/0/4/4	-

Continued on next page...

Continued from previous page...

Mol	Type	Chain	Res	Link	Chirals	Torsions	Rings
3	1PE	D	1300	-	-	2/5/5/13	-
3	1PE	A	1300	-	-	2/5/5/13	-
2	PYR	C	1298	-	-	0/0/4/4	-
2	PYR	C	1299	-	-	0/0/4/4	-
2	PYR	B	1297	-	-	0/0/4/4	-

All (6) bond length outliers are listed below:

Mol	Chain	Res	Type	Atoms	Z	Observed(Å)	Ideal(Å)
2	D	1298	PYR	O3-C2	2.99	1.32	1.22
2	C	1298	PYR	O3-C2	2.85	1.31	1.22
2	A	1298	PYR	O3-C2	2.80	1.31	1.22
2	C	1300	PYR	O3-C2	2.79	1.31	1.22
2	C	1299	PYR	O3-C2	2.67	1.31	1.22
2	B	1297	PYR	O3-C2	2.66	1.31	1.22

There are no bond angle outliers.

There are no chirality outliers.

All (9) torsion outliers are listed below:

Mol	Chain	Res	Type	Atoms
3	D	1299	1PE	C13-C23-OH3-C22
3	D	1300	1PE	OH4-C13-C23-OH3
3	D	1300	1PE	C13-C23-OH3-C22
3	A	1299	1PE	OH2-C12-C22-OH3
3	A	1300	1PE	OH2-C12-C22-OH3
3	A	1299	1PE	C12-C22-OH3-C23
3	A	1299	1PE	C13-C23-OH3-C22
3	A	1299	1PE	OH4-C13-C23-OH3
3	A	1300	1PE	C13-C23-OH3-C22

There are no ring outliers.

3 monomers are involved in 5 short contacts:

Mol	Chain	Res	Type	Clashes	Symm-Clashes
3	A	1299	1PE	1	0
3	D	1300	1PE	3	0
3	A	1300	1PE	1	0

5.7 Other polymers

There are no such residues in this entry.

5.8 Polymer linkage issues

There are no chain breaks in this entry.

6 Fit of model and data ⓘ

6.1 Protein, DNA and RNA chains ⓘ

In the following table, the column labelled ‘#RSRZ> 2’ contains the number (and percentage) of RSRZ outliers, followed by percent RSRZ outliers for the chain as percentile scores relative to all X-ray entries and entries of similar resolution. The OWAB column contains the minimum, median, 95th percentile and maximum values of the occupancy-weighted average B-factor per residue. The column labelled ‘Q< 0.9’ lists the number of (and percentage) of residues with an average occupancy less than 0.9.

Mol	Chain	Analysed	<RSRZ>	#RSRZ>2			OWAB(Å ²)	Q<0.9
1	A	298/304 (98%)	-0.16	9 (3%)	50	51	7, 11, 25, 38	1 (0%)
1	B	297/304 (97%)	-0.17	5 (1%)	70	73	7, 12, 24, 40	2 (0%)
1	C	298/304 (98%)	-0.18	10 (3%)	45	45	7, 11, 25, 41	0
1	D	298/304 (98%)	-0.18	6 (2%)	65	67	7, 11, 23, 39	0
All	All	1191/1216 (97%)	-0.17	30 (2%)	57	58	7, 11, 25, 41	3 (0%)

All (30) RSRZ outliers are listed below:

Mol	Chain	Res	Type	RSRZ
1	C	1	HIS	9.1
1	B	1	HIS	8.1
1	A	0	HIS	8.0
1	B	0	HIS	7.7
1	D	1	HIS	6.9
1	A	1	HIS	6.6
1	B	3	THR	5.7
1	D	0	HIS	5.4
1	C	0	HIS	5.1
1	D	3	THR	5.0
1	A	3	THR	4.6
1	C	296	ARG	4.5
1	A	297	GLY	3.6
1	C	3	THR	3.6
1	D	296	ARG	3.3
1	D	146	LYS	3.2
1	A	146	LYS	2.9
1	C	297	GLY	2.7
1	B	294	GLN	2.6
1	C	4	ASN	2.5
1	A	230	GLN	2.4

Continued on next page...

Continued from previous page...

Mol	Chain	Res	Type	RSRZ
1	C	-1	HIS	2.4
1	B	2	ALA	2.4
1	C	2	ALA	2.4
1	D	230	GLN	2.3
1	C	290	GLN	2.2
1	A	296	ARG	2.2
1	A	225	LYS	2.0
1	C	146	LYS	2.0
1	A	4	ASN	2.0

6.2 Non-standard residues in protein, DNA, RNA chains [i](#)

In the following table, the Atoms column lists the number of modelled atoms in the group and the number defined in the chemical component dictionary. The B-factors column lists the minimum, median, 95th percentile and maximum values of B factors of atoms in the group. The column labelled 'Q< 0.9' lists the number of atoms with occupancy less than 0.9.

Mol	Type	Chain	Res	Atoms	RSCC	RSR	B-factors(Å ²)	Q<0.9
1	KPI	B	165	14/15	0.96	0.12	7,8,10,11	0
1	KPI	A	165	14/15	0.97	0.10	7,8,10,11	0
1	KPI	D	165	14/15	0.97	0.10	7,8,9,10	0
1	KPI	C	165	14/15	0.97	0.11	7,8,9,13	0

6.3 Carbohydrates [i](#)

There are no carbohydrates in this entry.

6.4 Ligands [i](#)

In the following table, the Atoms column lists the number of modelled atoms in the group and the number defined in the chemical component dictionary. The B-factors column lists the minimum, median, 95th percentile and maximum values of B factors of atoms in the group. The column labelled 'Q< 0.9' lists the number of atoms with occupancy less than 0.9.

Mol	Type	Chain	Res	Atoms	RSCC	RSR	B-factors(Å ²)	Q<0.9
3	1PE	A	1300	8/16	0.28	0.28	53,54,55,55	0
2	PYR	C	1300	6/6	0.72	0.26	57,58,58,59	0
2	PYR	C	1299	6/6	0.74	0.21	46,46,47,47	0
2	PYR	D	1298	6/6	0.79	0.17	25,29,30,32	0
3	1PE	D	1300	8/16	0.82	0.13	30,32,32,32	0

Continued on next page...

Continued from previous page...

Mol	Type	Chain	Res	Atoms	RSCC	RSR	B-factors(\AA^2)	Q<0.9
2	PYR	C	1298	6/6	0.85	0.17	21,25,29,29	0
3	1PE	A	1299	8/16	0.87	0.14	31,33,35,35	0
3	1PE	D	1299	7/16	0.87	0.11	38,39,40,41	0
2	PYR	B	1297	6/6	0.88	0.15	26,29,33,33	0
2	PYR	A	1298	6/6	0.89	0.14	23,27,30,32	0

6.5 Other polymers [i](#)

There are no such residues in this entry.