



Full wwPDB X-ray Structure Validation Report ⓘ

May 17, 2020 – 01:50 pm BST

PDB ID : 4XGX
Title : Crystal structure of Escherichia coli Flavin trafficking protein, an FMN transferase, Y60N mutant, ADP-inhibited
Authors : Tomchick, D.R.; Brautigam, C.A.; Deka, R.K.; Norgard, M.V.
Deposited on : 2015-01-02
Resolution : 1.90 Å(reported)

This is a Full wwPDB X-ray Structure Validation Report for a publicly released PDB entry.

We welcome your comments at validation@mail.wwpdb.org

A user guide is available at

<https://www.wwpdb.org/validation/2017/XrayValidationReportHelp>

with specific help available everywhere you see the ⓘ symbol.

The following versions of software and data (see [references ⓘ](#)) were used in the production of this report:

MolProbity : 4.02b-467
Mogul : 1.8.5 (274361), CSD as541be (2020)
Xtriage (Phenix) : 1.13
EDS : 2.11
buster-report : 1.1.7 (2018)
Percentile statistics : 20191225.v01 (using entries in the PDB archive December 25th 2019)
Refmac : 5.8.0158
CCP4 : 7.0.044 (Gargrove)
Ideal geometry (proteins) : Engh & Huber (2001)
Ideal geometry (DNA, RNA) : Parkinson et al. (1996)
Validation Pipeline (wwPDB-VP) : 2.11

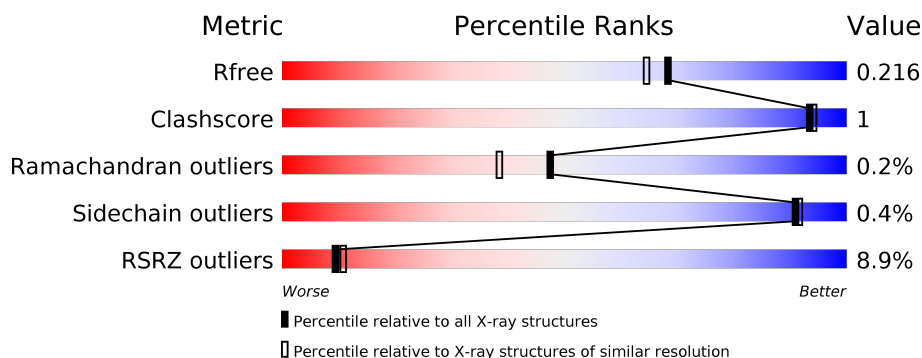
1 Overall quality at a glance

The following experimental techniques were used to determine the structure:

X-RAY DIFFRACTION

The reported resolution of this entry is 1.90 Å.

Percentile scores (ranging between 0-100) for global validation metrics of the entry are shown in the following graphic. The table shows the number of entries on which the scores are based.



Metric	Whole archive (#Entries)	Similar resolution (#Entries, resolution range(Å))
R_{free}	130704	6207 (1.90-1.90)
Clashscore	141614	6847 (1.90-1.90)
Ramachandran outliers	138981	6760 (1.90-1.90)
Sidechain outliers	138945	6760 (1.90-1.90)
RSRZ outliers	127900	6082 (1.90-1.90)

The table below summarises the geometric issues observed across the polymeric chains and their fit to the electron density. The red, orange, yellow and green segments on the lower bar indicate the fraction of residues that contain outliers for ≥ 3 , 2, 1 and 0 types of geometric quality criteria respectively. A grey segment represents the fraction of residues that are not modelled. The numeric value for each fraction is indicated below the corresponding segment, with a dot representing fractions $\leq 5\%$. The upper red bar (where present) indicates the fraction of residues that have poor fit to the electron density. The numeric value is given above the bar.

Mol	Chain	Length	Quality of chain
1	A	340	<div> <div>9%</div> <div> <div></div> <div>84%</div> <div>•</div> <div>15%</div> </div> </div>
1	B	340	<div> <div>6%</div> <div> <div></div> <div>81%</div> <div>6%</div> <div>14%</div> </div> </div>

The following table lists non-polymeric compounds, carbohydrate monomers and non-standard residues in protein, DNA, RNA chains that are outliers for geometric or electron-density-fit criteria:

Mol	Type	Chain	Res	Chirality	Geometry	Clashes	Electron density
5	EDO	B	409	-	-	-	X

2 Entry composition

There are 6 unique types of molecules in this entry. The entry contains 9560 atoms, of which 4566 are hydrogens and 0 are deuteriums.

In the tables below, the ZeroOcc column contains the number of atoms modelled with zero occupancy, the AltConf column contains the number of residues with at least one atom in alternate conformation and the Trace column contains the number of residues modelled with at most 2 atoms.

- Molecule 1 is a protein called FAD:protein FMN transferase.

Mol	Chain	Residues	Atoms						ZeroOcc	AltConf	Trace
1	A	290	Total	C	H	N	O	S	0	3	0
			4462	1400	2233	383	435	11			
1	B	293	Total	C	H	N	O	S	0	8	0
			4568	1435	2285	390	446	12			

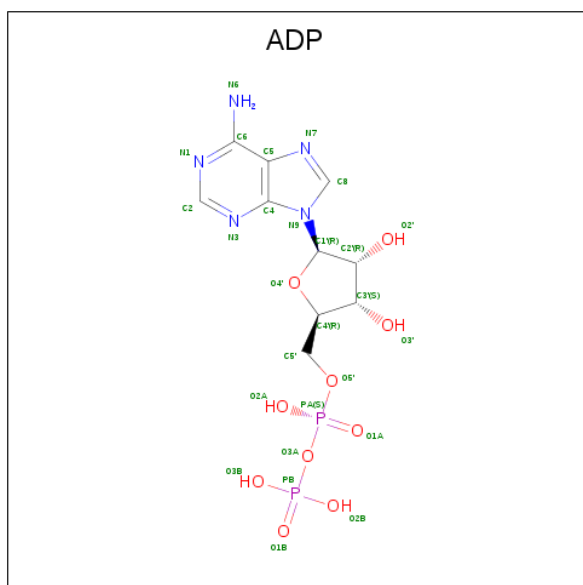
There are 20 discrepancies between the modelled and reference sequences:

Chain	Residue	Modelled	Actual	Comment	Reference
A	1	MET	-	initiating methionine	UNP P0AB85
A	60	ASN	TYR	engineered mutation	UNP P0AB85
A	333	LEU	-	expression tag	UNP P0AB85
A	334	GLU	-	expression tag	UNP P0AB85
A	335	HIS	-	expression tag	UNP P0AB85
A	336	HIS	-	expression tag	UNP P0AB85
A	337	HIS	-	expression tag	UNP P0AB85
A	338	HIS	-	expression tag	UNP P0AB85
A	339	HIS	-	expression tag	UNP P0AB85
A	340	HIS	-	expression tag	UNP P0AB85
B	1	MET	-	initiating methionine	UNP P0AB85
B	60	ASN	TYR	engineered mutation	UNP P0AB85
B	333	LEU	-	expression tag	UNP P0AB85
B	334	GLU	-	expression tag	UNP P0AB85
B	335	HIS	-	expression tag	UNP P0AB85
B	336	HIS	-	expression tag	UNP P0AB85
B	337	HIS	-	expression tag	UNP P0AB85
B	338	HIS	-	expression tag	UNP P0AB85
B	339	HIS	-	expression tag	UNP P0AB85
B	340	HIS	-	expression tag	UNP P0AB85

- Molecule 2 is MAGNESIUM ION (three-letter code: MG) (formula: Mg).

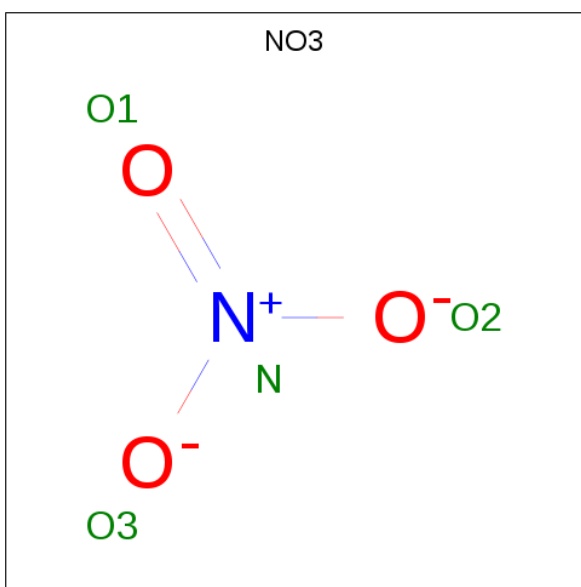
Mol	Chain	Residues	Atoms	ZeroOcc	AltConf
2	B	2	Total Mg 2 2	0	0
2	A	2	Total Mg 2 2	0	0

- Molecule 3 is ADENOSINE-5'-DIPHOSPHATE (three-letter code: ADP) (formula: $C_{10}H_{15}N_5O_{10}P_2$).



Mol	Chain	Residues	Atoms						ZeroOcc	AltConf
3	A	1	Total	C	H	N	O	P	0	0
			39	10	12	5	10	2		
3	B	1	Total	C	H	N	O	P	0	0
			39	10	12	5	10	2		

- Molecule 4 is NITRATE ION (three-letter code: NO3) (formula: NO_3).



Mol	Chain	Residues	Atoms			ZeroOcc	AltConf
4	A	1	Total	N	O	0	0
			4	1	3		
4	A	1	Total	N	O	0	0
			4	1	3		
4	A	1	Total	N	O	0	0
			4	1	3		
4	A	1	Total	N	O	0	0
			4	1	3		
4	A	1	Total	N	O	0	0
			4	1	3		
4	B	1	Total	N	O	0	0
			4	1	3		
4	B	1	Total	N	O	0	0
			4	1	3		
4	B	1	Total	N	O	0	0
			4	1	3		

- Molecule 5 is 1,2-ETHANEDIOL (three-letter code: EDO) (formula: C₂H₆O₂).



Mol	Chain	Residues	Atoms				ZeroOcc	AltConf
5	A	1	Total	C	H	O	0	0
			10	2	6	2		
5	A	1	Total	C	H	O	0	0
			10	2	6	2		
5	B	1	Total	C	H	O	0	0
			10	2	6	2		
5	B	1	Total	C	H	O	0	0
			10	2	6	2		

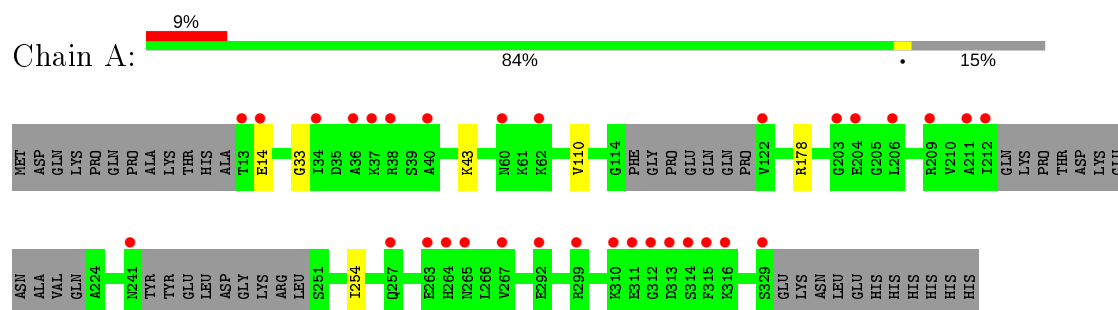
- Molecule 6 is water.

Mol	Chain	Residues	Atoms		ZeroOcc	AltConf
6	A	160	Total	O	0	0
			160	160		
6	B	212	Total	O	0	0
			212	212		

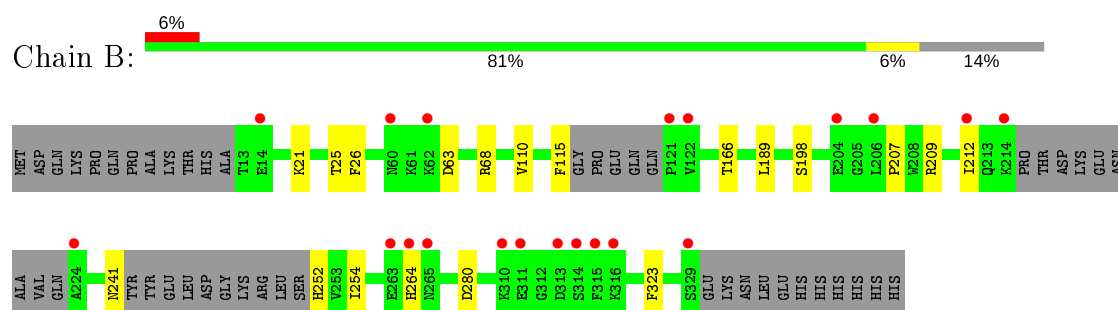
3 Residue-property plots [i](#)

These plots are drawn for all protein, RNA and DNA chains in the entry. The first graphic for a chain summarises the proportions of the various outlier classes displayed in the second graphic. The second graphic shows the sequence view annotated by issues in geometry and electron density. Residues are color-coded according to the number of geometric quality criteria for which they contain at least one outlier: green = 0, yellow = 1, orange = 2 and red = 3 or more. A red dot above a residue indicates a poor fit to the electron density ($RSRZ > 2$). Stretches of 2 or more consecutive residues without any outlier are shown as a green connector. Residues present in the sample, but not in the model, are shown in grey.

- Molecule 1: FAD:protein FMN transferase



- Molecule 1: FAD:protein FMN transferase



4 Data and refinement statistics

Property	Value	Source
Space group	P 21 21 21	Depositor
Cell constants a, b, c, α , β , γ	54.58Å 56.98Å 224.77Å 90.00° 90.00° 90.00°	Depositor
Resolution (Å)	28.26 – 1.90 29.64 – 1.90	Depositor EDS
% Data completeness (in resolution range)	88.4 (28.26-1.90) 88.4 (29.64-1.90)	Depositor EDS
R_{merge}	0.04	Depositor
R_{sym}	(Not available)	Depositor
$\langle I/\sigma(I) \rangle$ ¹	3.44 (at 1.91Å)	Xtriage
Refinement program	PHENIX	Depositor
R, R_{free}	0.180 , 0.214 0.183 , 0.216	Depositor DCC
R_{free} test set	2495 reflections (5.01%)	wwPDB-VP
Wilson B-factor (Å ²)	19.1	Xtriage
Anisotropy	0.186	Xtriage
Bulk solvent k_{sol} (e/Å ³), B_{sol} (Å ²)	0.42 , 57.1	EDS
L-test for twinning ²	$\langle L \rangle = 0.49$, $\langle L^2 \rangle = 0.33$	Xtriage
Estimated twinning fraction	0.026 for k,h,-l	Xtriage
F_o, F_c correlation	0.94	EDS
Total number of atoms	9560	wwPDB-VP
Average B, all atoms (Å ²)	33.0	wwPDB-VP

Xtriage's analysis on translational NCS is as follows: *The largest off-origin peak in the Patterson function is 4.14% of the height of the origin peak. No significant pseudotranslation is detected.*

¹Intensities estimated from amplitudes.

²Theoretical values of $\langle |L| \rangle$, $\langle L^2 \rangle$ for acentric reflections are 0.5, 0.333 respectively for untwinned datasets, and 0.375, 0.2 for perfectly twinned datasets.

5 Model quality

5.1 Standard geometry

Bond lengths and bond angles in the following residue types are not validated in this section: MG, EDO, ADP, NO3

The Z score for a bond length (or angle) is the number of standard deviations the observed value is removed from the expected value. A bond length (or angle) with $|Z| > 5$ is considered an outlier worth inspection. RMSZ is the root-mean-square of all Z scores of the bond lengths (or angles).

Mol	Chain	Bond lengths		Bond angles	
		RMSZ	# Z >5	RMSZ	# Z >5
1	A	0.28	0/2278	0.47	0/3086
1	B	0.30	0/2353	0.49	0/3185
All	All	0.29	0/4631	0.48	0/6271

There are no bond length outliers.

There are no bond angle outliers.

There are no chirality outliers.

There are no planarity outliers.

5.2 Too-close contacts

In the following table, the Non-H and H(model) columns list the number of non-hydrogen atoms and hydrogen atoms in the chain respectively. The H(added) column lists the number of hydrogen atoms added and optimized by MolProbity. The Clashes column lists the number of clashes within the asymmetric unit, whereas Symm-Clashes lists symmetry related clashes.

Mol	Chain	Non-H	H(model)	H(added)	Clashes	Symm-Clashes
1	A	2229	2233	2226	4	0
1	B	2283	2285	2271	9	0
2	A	2	0	0	0	0
2	B	2	0	0	0	0
3	A	27	12	12	0	0
3	B	27	12	12	0	0
4	A	20	0	0	0	0
4	B	16	0	0	0	0
5	A	8	12	12	0	0
5	B	8	12	12	0	0
6	A	160	0	0	2	0

Continued on next page...

Continued from previous page...

Mol	Chain	Non-H	H(model)	H(added)	Clashes	Symm-Clashes
6	B	212	0	0	2	0
All	All	4994	4566	4545	13	0

The all-atom clashscore is defined as the number of clashes found per 1000 atoms (including hydrogen atoms). The all-atom clashscore for this structure is 1.

All (13) close contacts within the same asymmetric unit are listed below, sorted by their clash magnitude.

Atom-1	Atom-2	Interatomic distance (Å)	Clash overlap (Å)
1:B:207:PRO:O	1:B:209:ARG:NH1	2.33	0.62
1:A:14:GLU:O	1:A:33:GLY:N	2.33	0.56
1:A:178:ARG:NH2	6:A:504:HOH:O	2.37	0.56
1:B:241:ASN:ND2	6:B:505:HOH:O	2.39	0.53
1:B:189:LEU:HD13	1:B:198:SER:HB3	1.92	0.52
1:A:110:VAL:HA	1:A:254:ILE:CD1	2.42	0.50
1:B:110:VAL:HA	1:B:254:ILE:HD12	1.93	0.49
1:B:21:LYS:NZ	6:B:508:HOH:O	2.43	0.46
1:B:63[A]:ASP:OD1	1:B:68:ARG:NH2	2.53	0.42
1:A:43:LYS:NZ	6:A:509:HOH:O	2.44	0.42
1:B:25:THR:OG1	1:B:26:PHE:N	2.51	0.42
1:B:115:PHE:CD2	1:B:252:HIS:N	2.88	0.41
1:B:212:ILE:HD13	1:B:323:PHE:HZ	1.85	0.41

There are no symmetry-related clashes.

5.3 Torsion angles ⓘ

5.3.1 Protein backbone ⓘ

In the following table, the Percentiles column shows the percent Ramachandran outliers of the chain as a percentile score with respect to all X-ray entries followed by that with respect to entries of similar resolution.

The Analysed column shows the number of residues for which the backbone conformation was analysed, and the total number of residues.

Mol	Chain	Analysed	Favoured	Allowed	Outliers	Percentiles	
1	A	285/340 (84%)	277 (97%)	8 (3%)	0	100	100
1	B	293/340 (86%)	286 (98%)	6 (2%)	1 (0%)	41	31
All	All	578/680 (85%)	563 (97%)	14 (2%)	1 (0%)	47	38

All (1) Ramachandran outliers are listed below:

Mol	Chain	Res	Type
1	B	264	HIS

5.3.2 Protein sidechains [i](#)

In the following table, the Percentiles column shows the percent sidechain outliers of the chain as a percentile score with respect to all X-ray entries followed by that with respect to entries of similar resolution.

The Analysed column shows the number of residues for which the sidechain conformation was analysed, and the total number of residues.

Mol	Chain	Analysed	Rotameric	Outliers	Percentiles	
1	A	246/288 (85%)	246 (100%)	0	100	100
1	B	254/288 (88%)	252 (99%)	2 (1%)	81	82
All	All	500/576 (87%)	498 (100%)	2 (0%)	91	91

All (2) residues with a non-rotameric sidechain are listed below:

Mol	Chain	Res	Type
1	B	166	THR
1	B	280	ASP

Some sidechains can be flipped to improve hydrogen bonding and reduce clashes. There are no such sidechains identified.

5.3.3 RNA [i](#)

There are no RNA molecules in this entry.

5.4 Non-standard residues in protein, DNA, RNA chains [i](#)

There are no non-standard protein/DNA/RNA residues in this entry.

5.5 Carbohydrates [i](#)

There are no carbohydrates in this entry.

5.6 Ligand geometry

Of 19 ligands modelled in this entry, 4 are monoatomic - leaving 15 for Mogul analysis.

In the following table, the Counts columns list the number of bonds (or angles) for which Mogul statistics could be retrieved, the number of bonds (or angles) that are observed in the model and the number of bonds (or angles) that are defined in the Chemical Component Dictionary. The Link column lists molecule types, if any, to which the group is linked. The Z score for a bond length (or angle) is the number of standard deviations the observed value is removed from the expected value. A bond length (or angle) with $|Z| > 2$ is considered an outlier worth inspection. RMSZ is the root-mean-square of all Z scores of the bond lengths (or angles).

Mol	Type	Chain	Res	Link	Bond lengths			Bond angles		
					Counts	RMSZ	# $ Z > 2$	Counts	RMSZ	# $ Z > 2$
4	NO3	A	404	-	1,3,3	0.50	0	0,3,3	0.00	-
4	NO3	B	404	-	1,3,3	0.63	0	0,3,3	0.00	-
5	EDO	B	408	-	3,3,3	0.45	0	2,2,2	0.36	0
5	EDO	A	410	-	3,3,3	0.41	0	2,2,2	0.38	0
4	NO3	B	405	-	1,3,3	0.65	0	0,3,3	0.00	-
4	NO3	A	407	-	1,3,3	0.65	0	0,3,3	0.00	-
5	EDO	A	409	-	3,3,3	0.40	0	2,2,2	0.35	0
5	EDO	B	409	-	3,3,3	0.46	0	2,2,2	0.33	0
4	NO3	B	406	-	1,3,3	0.66	0	0,3,3	0.00	-
4	NO3	A	406	-	1,3,3	0.60	0	0,3,3	0.00	-
3	ADP	B	403	2	24,29,29	0.86	1 (4%)	29,45,45	1.36	3 (10%)
4	NO3	A	408	-	1,3,3	0.75	0	0,3,3	0.00	-
4	NO3	B	407	-	1,3,3	0.59	0	0,3,3	0.00	-
3	ADP	A	403	2	24,29,29	0.87	0	29,45,45	1.40	7 (24%)
4	NO3	A	405	-	1,3,3	0.60	0	0,3,3	0.00	-

In the following table, the Chirals column lists the number of chiral outliers, the number of chiral centers analysed, the number of these observed in the model and the number defined in the Chemical Component Dictionary. Similar counts are reported in the Torsion and Rings columns. '-' means no outliers of that kind were identified.

Mol	Type	Chain	Res	Link	Chirals	Torsions	Rings
5	EDO	B	408	-	-	0/1/1/1	-
5	EDO	A	410	-	-	0/1/1/1	-
5	EDO	A	409	-	-	0/1/1/1	-
5	EDO	B	409	-	-	0/1/1/1	-
3	ADP	B	403	2	-	3/12/32/32	0/3/3/3
3	ADP	A	403	2	-	1/12/32/32	0/3/3/3

All (1) bond length outliers are listed below:

Mol	Chain	Res	Type	Atoms	Z	Observed(Å)	Ideal(Å)
3	B	403	ADP	C5-C4	2.03	1.46	1.40

All (10) bond angle outliers are listed below:

Mol	Chain	Res	Type	Atoms	Z	Observed(°)	Ideal(°)
3	A	403	ADP	N3-C2-N1	-3.58	123.08	128.68
3	B	403	ADP	N3-C2-N1	-3.56	123.12	128.68
3	A	403	ADP	C5-C6-N6	-2.90	115.95	120.35
3	B	403	ADP	PA-O3A-PB	-2.63	123.81	132.83
3	B	403	ADP	C3'-C2'-C1'	2.50	104.74	100.98
3	A	403	ADP	PA-O3A-PB	-2.33	124.84	132.83
3	A	403	ADP	N6-C6-N1	2.32	123.39	118.57
3	A	403	ADP	C1'-N9-C4	-2.30	122.61	126.64
3	A	403	ADP	C3'-C2'-C1'	2.12	104.17	100.98
3	A	403	ADP	O3B-PB-O2B	2.09	115.62	107.64

There are no chirality outliers.

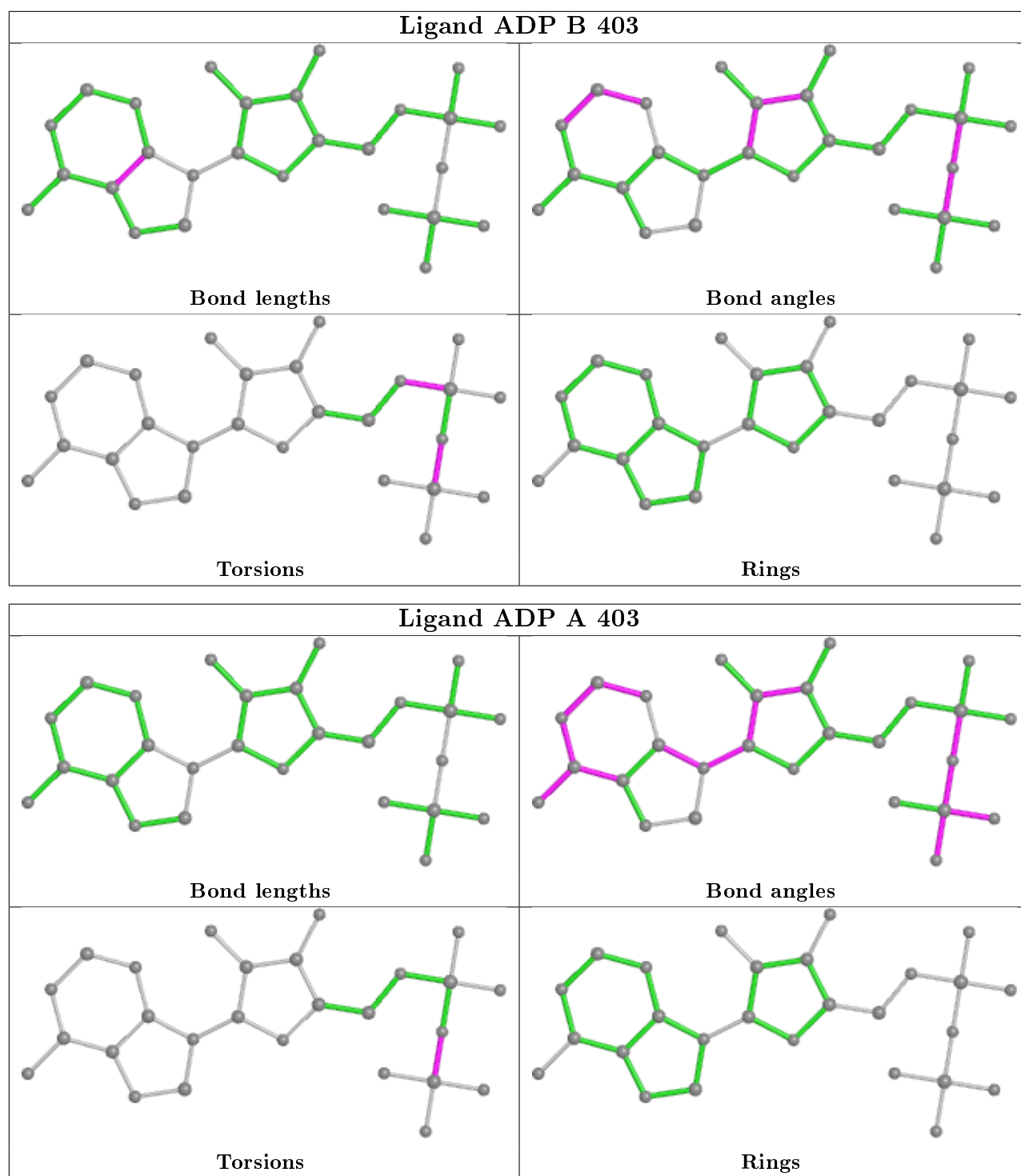
All (4) torsion outliers are listed below:

Mol	Chain	Res	Type	Atoms
3	B	403	ADP	PA-O3A-PB-O1B
3	B	403	ADP	PA-O3A-PB-O2B
3	A	403	ADP	PA-O3A-PB-O2B
3	B	403	ADP	C5'-O5'-PA-O1A

There are no ring outliers.

No monomer is involved in short contacts.

The following is a two-dimensional graphical depiction of Mogul quality analysis of bond lengths, bond angles, torsion angles, and ring geometry for all instances of the Ligand of Interest. In addition, ligands with molecular weight > 250 and outliers as shown on the validation Tables will also be included. For torsion angles, if less than 5% of the Mogul distribution of torsion angles is within 10 degrees of the torsion angle in question, then that torsion angle is considered an outlier. Any bond that is central to one or more torsion angles identified as an outlier by Mogul will be highlighted in the graph. For rings, the root-mean-square deviation (RMSD) between the ring in question and similar rings identified by Mogul is calculated over all ring torsion angles. If the average RMSD is greater than 60 degrees and the minimal RMSD between the ring in question and any Mogul-identified rings is also greater than 60 degrees, then that ring is considered an outlier. The outliers are highlighted in purple. The color gray indicates Mogul did not find sufficient equivalents in the CSD to analyse the geometry.



5.7 Other polymers ⓘ

There are no such residues in this entry.

5.8 Polymer linkage issues ⓘ

There are no chain breaks in this entry.

6 Fit of model and data

6.1 Protein, DNA and RNA chains

In the following table, the column labelled ‘#RSRZ> 2’ contains the number (and percentage) of RSRZ outliers, followed by percent RSRZ outliers for the chain as percentile scores relative to all X-ray entries and entries of similar resolution. The OWAB column contains the minimum, median, 95th percentile and maximum values of the occupancy-weighted average B-factor per residue. The column labelled ‘Q< 0.9’ lists the number of (and percentage) of residues with an average occupancy less than 0.9.

Mol	Chain	Analysed	<RSRZ>	#RSRZ>2	OWAB(Å ²)	Q<0.9
1	A	290/340 (85%)	0.50	32 (11%) 5 6	8, 27, 75, 107	0
1	B	293/340 (86%)	0.24	20 (6%) 17 19	7, 21, 57, 103	0
All	All	583/680 (85%)	0.37	52 (8%) 9 11	7, 24, 69, 107	0

All (52) RSRZ outliers are listed below:

Mol	Chain	Res	Type	RSRZ
1	A	122	VAL	9.0
1	B	122	VAL	7.7
1	B	265	ASN	5.9
1	A	13	THR	5.6
1	A	313	ASP	5.0
1	B	315	PHE	4.8
1	B	62	LYS	4.7
1	A	315	PHE	4.7
1	B	311	GLU	4.7
1	A	206	LEU	4.6
1	A	14	GLU	4.6
1	A	209	ARG	4.6
1	A	203	GLY	4.4
1	A	62	LYS	4.3
1	B	264	HIS	4.3
1	B	313	ASP	3.9
1	B	206	LEU	3.9
1	A	265	ASN	3.8
1	A	34	ILE	3.7
1	B	263	GLU	3.6
1	B	121	PRO	3.5
1	B	310	LYS	3.4
1	A	329	SER	3.4
1	B	314	SER	3.4

Continued on next page...

Continued from previous page...

Mol	Chain	Res	Type	RSRZ
1	A	316	LYS	3.3
1	B	214	LYS	3.2
1	A	314	SER	3.2
1	A	212	ILE	3.1
1	B	204	GLU	3.1
1	A	310	LYS	3.0
1	B	316	LYS	3.0
1	A	60	ASN	2.9
1	A	311	GLU	2.9
1	A	267	VAL	2.8
1	B	329	SER	2.8
1	A	299	ARG	2.7
1	B	60	ASN	2.4
1	B	14	GLU	2.4
1	A	312	GLY	2.3
1	A	38	ARG	2.3
1	A	36	ALA	2.3
1	A	257	GLN	2.3
1	B	224	ALA	2.2
1	A	292	GLU	2.2
1	B	212	ILE	2.2
1	A	241	ASN	2.2
1	A	204	GLU	2.2
1	A	263	GLU	2.1
1	A	40	ALA	2.1
1	A	264	HIS	2.0
1	A	37	LYS	2.0
1	A	211	ALA	2.0

6.2 Non-standard residues in protein, DNA, RNA chains [i](#)

There are no non-standard protein/DNA/RNA residues in this entry.

6.3 Carbohydrates [i](#)

There are no carbohydrates in this entry.

6.4 Ligands [i](#)

In the following table, the Atoms column lists the number of modelled atoms in the group and the number defined in the chemical component dictionary. The B-factors column lists the minimum,

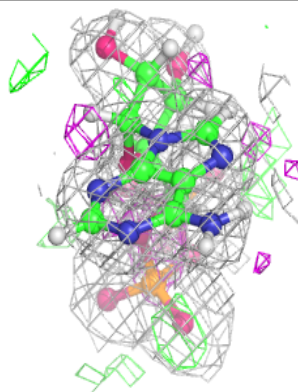
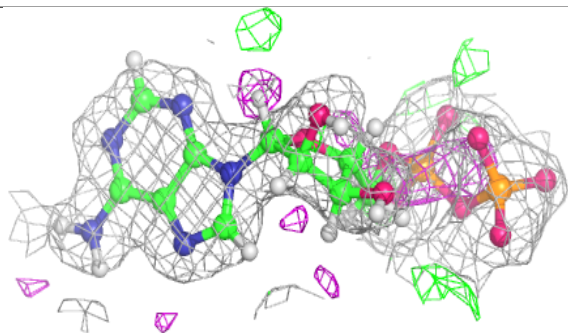
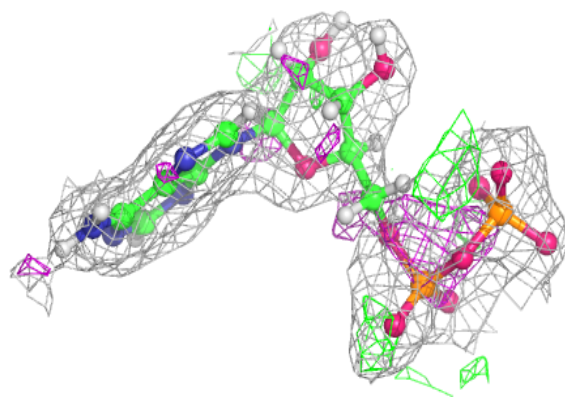
median, 95th percentile and maximum values of B factors of atoms in the group. The column labelled 'Q< 0.9' lists the number of atoms with occupancy less than 0.9.

Mol	Type	Chain	Res	Atoms	RSCC	RSR	B-factors(Å ²)	Q<0.9
5	EDO	B	409	4/4	0.71	0.40	52,62,67,67	0
4	NO3	A	408	4/4	0.80	0.18	43,47,50,52	0
4	NO3	B	404	4/4	0.85	0.14	44,48,50,53	0
4	NO3	B	407	4/4	0.85	0.27	54,58,61,67	0
4	NO3	A	407	4/4	0.88	0.19	47,47,52,53	0
5	EDO	B	408	4/4	0.89	0.20	29,43,52,63	0
4	NO3	A	405	4/4	0.89	0.13	36,50,50,55	0
3	ADP	B	403	27/27	0.90	0.18	8,27,74,161	0
5	EDO	A	410	4/4	0.91	0.21	40,48,53,57	0
2	MG	A	402	1/1	0.91	0.11	40,40,40,40	0
3	ADP	A	403	27/27	0.92	0.13	9,36,64,70	0
2	MG	B	402	1/1	0.94	0.09	39,39,39,39	0
5	EDO	A	409	4/4	0.94	0.24	40,50,61,71	0
4	NO3	B	405	4/4	0.95	0.13	39,41,48,52	0
4	NO3	A	406	4/4	0.95	0.16	41,45,49,53	0
4	NO3	A	404	4/4	0.97	0.09	21,26,26,34	0
4	NO3	B	406	4/4	0.97	0.10	23,26,29,31	0
2	MG	A	401	1/1	0.99	0.07	21,21,21,21	0
2	MG	B	401	1/1	0.99	0.07	22,22,22,22	0

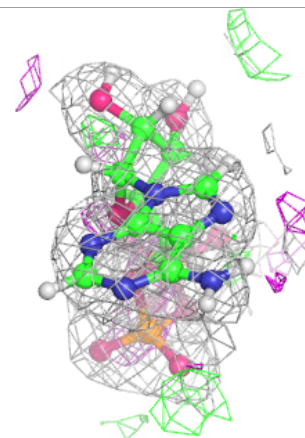
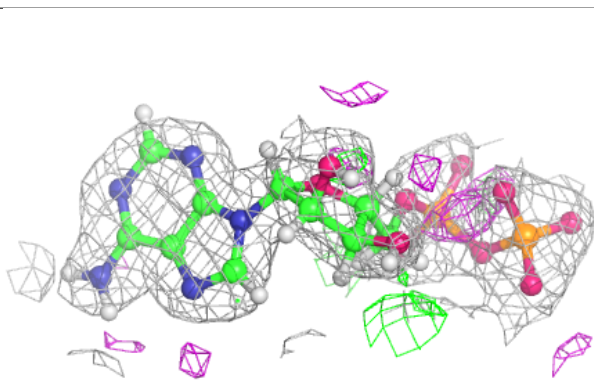
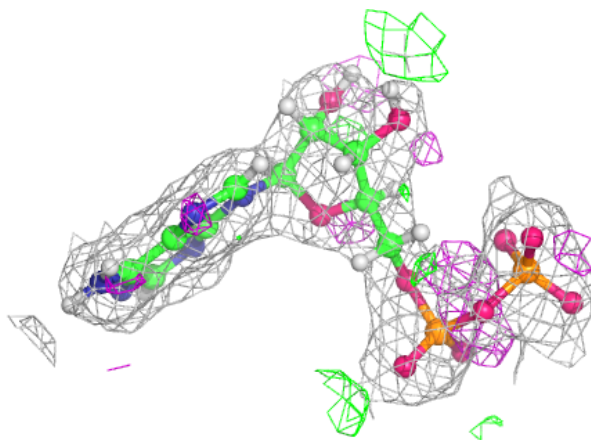
The following is a graphical depiction of the model fit to experimental electron density of all instances of the Ligand of Interest. In addition, ligands with molecular weight > 250 and outliers as shown on the geometry validation Tables will also be included. Each fit is shown from different orientation to approximate a three-dimensional view.

Electron density around ADP B 403:

$2mF_o-DF_c$ (at 0.7 rmsd) in gray
 mF_o-DF_c (at 3 rmsd) in purple (negative)
and green (positive)

**Electron density around ADP A 403:**

$2mF_o-DF_c$ (at 0.7 rmsd) in gray
 mF_o-DF_c (at 3 rmsd) in purple (negative)
and green (positive)



6.5 Other polymers

There are no such residues in this entry.