



Full wwPDB X-ray Structure Validation Report ⓘ

Aug 8, 2020 – 09:40 PM BST

PDB ID : 5XHQ
Title : Apolipoprotein N-acyl Transferase
Authors : Yingzhi, X.; Yong, X.; Guangyuan, L.; Fei, S.
Deposited on : 2017-04-23
Resolution : 2.59 Å(reported)

This is a Full wwPDB X-ray Structure Validation Report for a publicly released PDB entry.

We welcome your comments at validation@mail.wwpdb.org

A user guide is available at

<https://www.wwpdb.org/validation/2017/XrayValidationReportHelp>

with specific help available everywhere you see the ⓘ symbol.

The following versions of software and data (see [references ⓘ](#)) were used in the production of this report:

MolProbity : 4.02b-467
Mogul : 1.8.5 (274361), CSD as541be (2020)
Xtriage (Phenix) : 1.13
EDS : 2.13.1
buster-report : 1.1.7 (2018)
Percentile statistics : 20191225.v01 (using entries in the PDB archive December 25th 2019)
Refmac : 5.8.0158
CCP4 : 7.0.044 (Gargrove)
Ideal geometry (proteins) : Engh & Huber (2001)
Ideal geometry (DNA, RNA) : Parkinson et al. (1996)
Validation Pipeline (wwPDB-VP) : 2.13.1

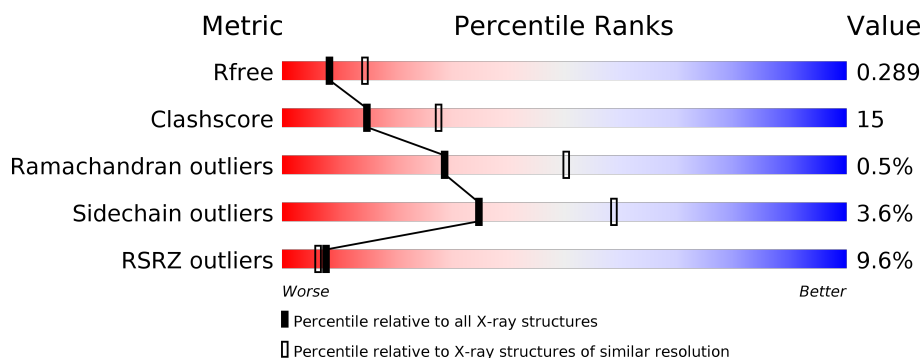
1 Overall quality at a glance ⓘ

The following experimental techniques were used to determine the structure:

X-RAY DIFFRACTION

The reported resolution of this entry is 2.59 Å.

Percentile scores (ranging between 0-100) for global validation metrics of the entry are shown in the following graphic. The table shows the number of entries on which the scores are based.



Metric	Whole archive (#Entries)	Similar resolution (#Entries, resolution range(Å))
R_{free}	130704	3676 (2.60-2.56)
Clashscore	141614	4049 (2.60-2.56)
Ramachandran outliers	138981	3979 (2.60-2.56)
Sidechain outliers	138945	3979 (2.60-2.56)
RSRZ outliers	127900	3614 (2.60-2.56)

The table below summarises the geometric issues observed across the polymeric chains and their fit to the electron density. The red, orange, yellow and green segments on the lower bar indicate the fraction of residues that contain outliers for ≥ 3 , 2, 1 and 0 types of geometric quality criteria respectively. A grey segment represents the fraction of residues that are not modelled. The numeric value for each fraction is indicated below the corresponding segment, with a dot representing fractions $\leq 5\%$. The upper red bar (where present) indicates the fraction of residues that have poor fit to the electron density. The numeric value is given above the bar.

Mol	Chain	Length	Quality of chain
1	A	516	<div> <div>12%</div> <div>66%</div> <div>26%</div> <div>5%</div> </div>
1	B	516	<div> <div>6%</div> <div>73%</div> <div>21%</div> <div>5%</div> </div>

The following table lists non-polymeric compounds, carbohydrate monomers and non-standard residues in protein, DNA, RNA chains that are outliers for geometric or electron-density-fit criteria:

Mol	Type	Chain	Res	Chirality	Geometry	Clashes	Electron density
2	HTG	A	602	-	-	X	-
2	HTG	B	604	-	-	-	X

2 Entry composition

There are 5 unique types of molecules in this entry. The entry contains 7783 atoms, of which 0 are hydrogens and 0 are deuteriums.

In the tables below, the ZeroOcc column contains the number of atoms modelled with zero occupancy, the AltConf column contains the number of residues with at least one atom in alternate conformation and the Trace column contains the number of residues modelled with at most 2 atoms.

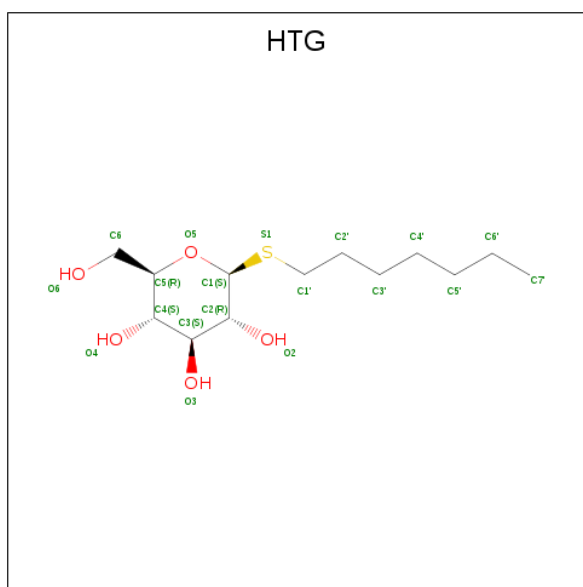
- Molecule 1 is a protein called Apolipoprotein N-acyltransferase.

Mol	Chain	Residues	Atoms					ZeroOcc	AltConf	Trace
1	A	488	Total	C	N	O	S	0	0	0
			3819	2518	628	660	13			
1	B	490	Total	C	N	O	S	0	0	0
			3822	2520	628	661	13			

There are 22 discrepancies between the modelled and reference sequences:

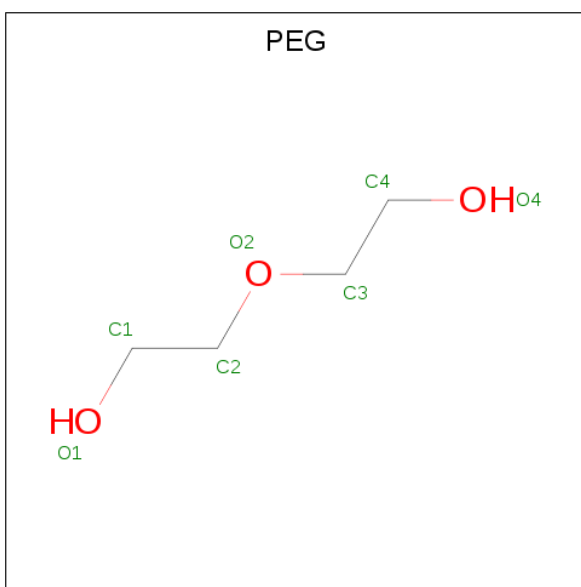
Chain	Residue	Modelled	Actual	Comment	Reference
A	62	GLY	CYS	engineered mutation	UNP P23930
A	283	VAL	ALA	engineered mutation	UNP P23930
A	377	VAL	ALA	engineered mutation	UNP P23930
A	509	GLY	-	expression tag	UNP P23930
A	510	SER	-	expression tag	UNP P23930
A	511	SER	-	expression tag	UNP P23930
A	512	GLY	-	expression tag	UNP P23930
A	513	SER	-	expression tag	UNP P23930
A	514	SER	-	expression tag	UNP P23930
A	515	GLY	-	expression tag	UNP P23930
A	516	GLY	-	expression tag	UNP P23930
B	62	GLY	CYS	engineered mutation	UNP P23930
B	283	VAL	ALA	engineered mutation	UNP P23930
B	377	VAL	ALA	engineered mutation	UNP P23930
B	509	GLY	-	expression tag	UNP P23930
B	510	SER	-	expression tag	UNP P23930
B	511	SER	-	expression tag	UNP P23930
B	512	GLY	-	expression tag	UNP P23930
B	513	SER	-	expression tag	UNP P23930
B	514	SER	-	expression tag	UNP P23930
B	515	GLY	-	expression tag	UNP P23930
B	516	GLY	-	expression tag	UNP P23930

- Molecule 2 is heptyl 1-thio-beta-D-glucopyranoside (three-letter code: HTG) (formula: C₁₃H₂₆O₅S).



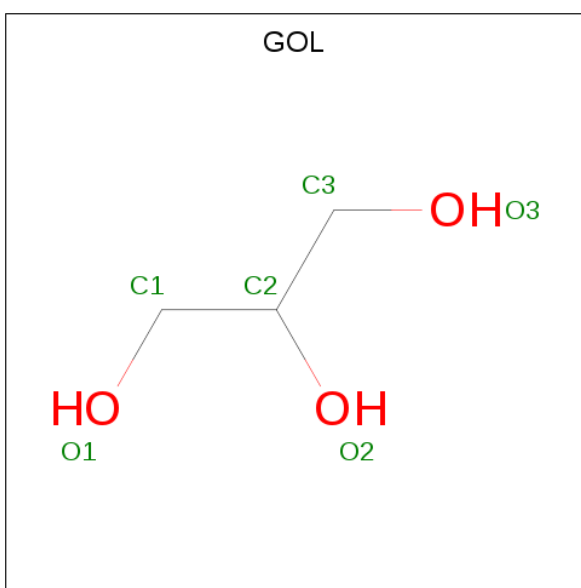
Mol	Chain	Residues	Atoms				ZeroOcc	AltConf
2	A	1	Total	C	O	S	0	0
			19	13	5	1		
2	A	1	Total	C	O	S	0	0
			19	13	5	1		
2	B	1	Total	C	O	S	0	0
			19	13	5	1		
2	B	1	Total	C	O	S	0	0
			12	6	5	1		
2	B	1	Total	C	O	S	0	0
			19	13	5	1		
2	B	1	Total	C			0	0
			7	7				

- Molecule 3 is DI(HYDROXYETHYL)ETHER (three-letter code: PEG) (formula: C₄H₁₀O₃).



Mol	Chain	Residues	Atoms			ZeroOcc	AltConf
3	A	1	Total	C	O	0	0
			7	4	3		
3	B	1	Total	C	O	0	0
			7	4	3		

- Molecule 4 is GLYCEROL (three-letter code: GOL) (formula: $C_3H_8O_3$).



Mol	Chain	Residues	Atoms			ZeroOcc	AltConf
4	B	1	Total	C	O	0	0
			6	3	3		
4	B	1	Total	C	O	0	0
			6	3	3		

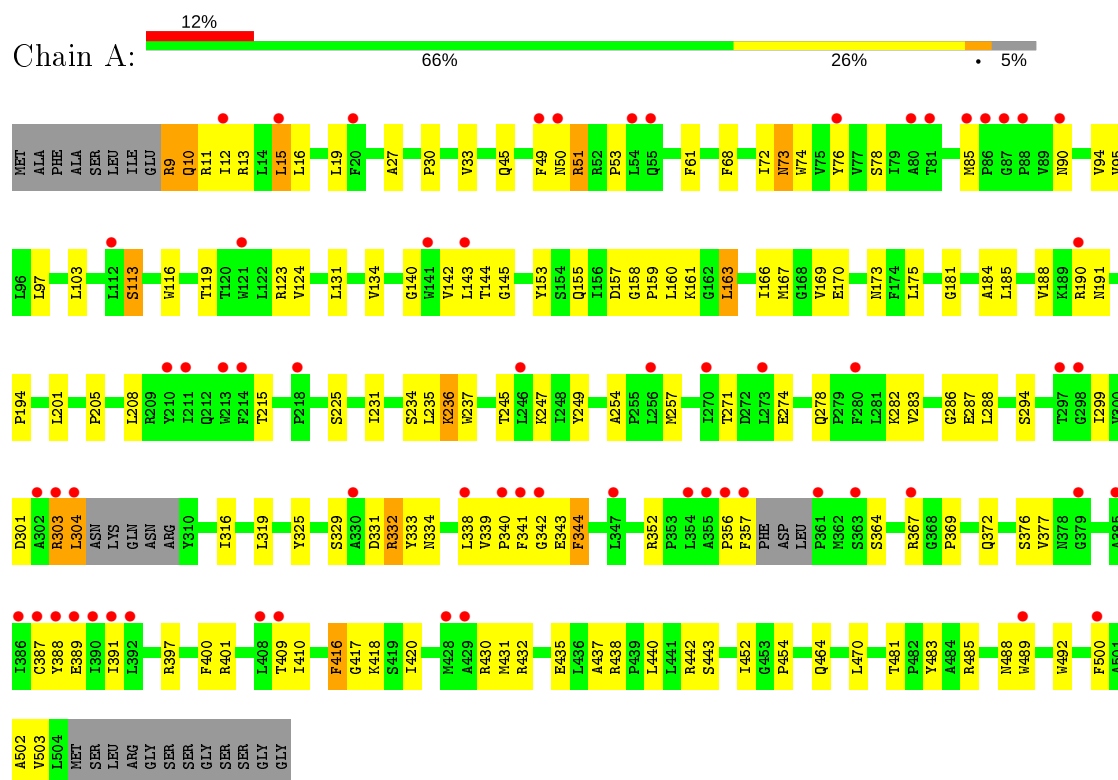
- Molecule 5 is water.

Mol	Chain	Residues	Atoms		ZeroOcc	AltConf
5	A	7	Total 7	O 7	0	0
5	B	14	Total 14	O 14	0	0

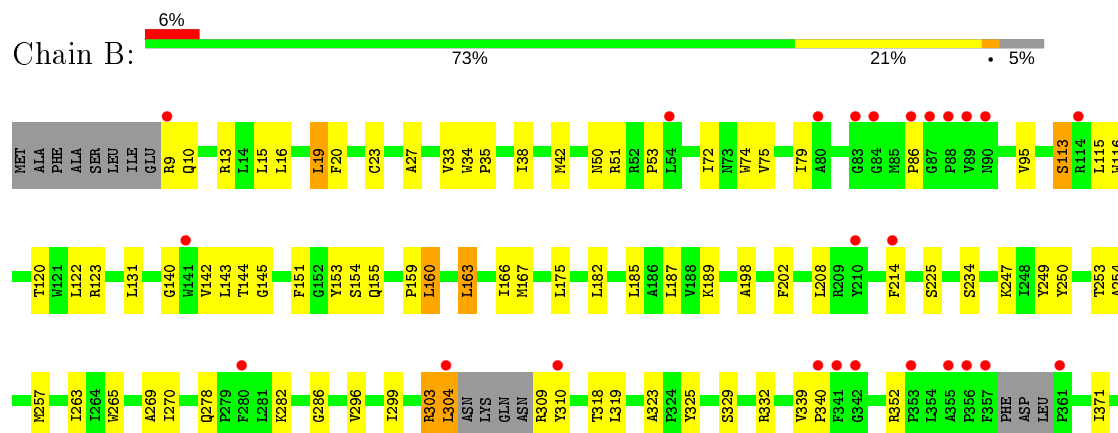
3 Residue-property plots

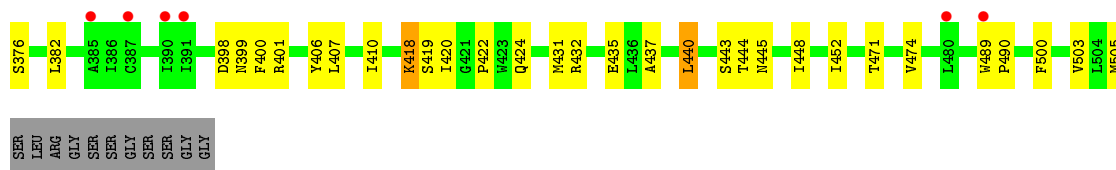
These plots are drawn for all protein, RNA, DNA and oligosaccharide chains in the entry. The first graphic for a chain summarises the proportions of the various outlier classes displayed in the second graphic. The second graphic shows the sequence view annotated by issues in geometry and electron density. Residues are color-coded according to the number of geometric quality criteria for which they contain at least one outlier: green = 0, yellow = 1, orange = 2 and red = 3 or more. A red dot above a residue indicates a poor fit to the electron density ($RSRZ > 2$). Stretches of 2 or more consecutive residues without any outlier are shown as a green connector. Residues present in the sample, but not in the model, are shown in grey.

• Molecule 1: Apolipoprotein N-acyltransferase



• Molecule 1: Apolipoprotein N-acyltransferase





4 Data and refinement statistics

Property	Value	Source
Space group	P 21 21 21	Depositor
Cell constants a, b, c, α , β , γ	90.87Å 134.09Å 135.16Å 90.00° 90.00° 90.00°	Depositor
Resolution (Å)	40.36 – 2.59 40.36 – 2.59	Depositor EDS
% Data completeness (in resolution range)	80.6 (40.36-2.59) 80.6 (40.36-2.59)	Depositor EDS
R_{merge}	0.14	Depositor
R_{sym}	(Not available)	Depositor
$\langle I/\sigma(I) \rangle$ ¹	6.27 (at 2.58Å)	Xtriage
Refinement program	PHENIX dev_1819	Depositor
R, R_{free}	0.233 , 0.288 0.239 , 0.289	Depositor DCC
R_{free} test set	2138 reflections (5.08%)	wwPDB-VP
Wilson B-factor (Å ²)	46.8	Xtriage
Anisotropy	1.285	Xtriage
Bulk solvent k_{sol} (e/Å ³), B_{sol} (Å ²)	0.32 , 48.5	EDS
L-test for twinning ²	$\langle L \rangle = 0.48$, $\langle L^2 \rangle = 0.32$	Xtriage
Estimated twinning fraction	0.000 for -h,l,k	Xtriage
F_o, F_c correlation	0.93	EDS
Total number of atoms	7783	wwPDB-VP
Average B, all atoms (Å ²)	48.0	wwPDB-VP

Xtriage's analysis on translational NCS is as follows: *The analyses of the Patterson function reveals a significant off-origin peak that is 38.19 % of the origin peak, indicating pseudo-translational symmetry. The chance of finding a peak of this or larger height randomly in a structure without pseudo-translational symmetry is equal to 3.8248e-04. The detected translational NCS is most likely also responsible for the elevated intensity ratio.*

¹ Intensities estimated from amplitudes.

² Theoretical values of $\langle |L| \rangle$, $\langle L^2 \rangle$ for acentric reflections are 0.5, 0.333 respectively for untwinned datasets, and 0.375, 0.2 for perfectly twinned datasets.

5 Model quality [i](#)

5.1 Standard geometry [i](#)

Bond lengths and bond angles in the following residue types are not validated in this section: HTG, GOL, PEG

The Z score for a bond length (or angle) is the number of standard deviations the observed value is removed from the expected value. A bond length (or angle) with $|Z| > 5$ is considered an outlier worth inspection. RMSZ is the root-mean-square of all Z scores of the bond lengths (or angles).

Mol	Chain	Bond lengths		Bond angles	
		RMSZ	$\# Z > 5$	RMSZ	$\# Z > 5$
1	A	0.49	0/3929	0.63	1/5370 (0.0%)
1	B	0.58	0/3932	0.67	5/5377 (0.1%)
All	All	0.54	0/7861	0.65	6/10747 (0.1%)

There are no bond length outliers.

All (6) bond angle outliers are listed below:

Mol	Chain	Res	Type	Atoms	Z	Observed(°)	Ideal(°)
1	B	303	ARG	CB-CA-C	-9.04	92.32	110.40
1	A	158	GLY	C-N-CD	6.09	141.19	128.40
1	B	323	ALA	C-N-CD	6.09	141.18	128.40
1	B	160	LEU	CB-CA-C	-6.07	98.67	110.20
1	B	304	LEU	N-CA-C	5.84	126.78	111.00
1	B	116	TRP	C-N-CD	5.63	140.23	128.40

There are no chirality outliers.

There are no planarity outliers.

5.2 Too-close contacts [i](#)

In the following table, the Non-H and H(model) columns list the number of non-hydrogen atoms and hydrogen atoms in the chain respectively. The H(added) column lists the number of hydrogen atoms added and optimized by MolProbity. The Clashes column lists the number of clashes within the asymmetric unit, whereas Symm-Clashes lists symmetry related clashes.

Mol	Chain	Non-H	H(model)	H(added)	Clashes	Symm-Clashes
1	A	3819	0	3880	138	0
1	B	3822	0	3870	95	0
2	A	38	0	52	12	0

Continued on next page...

Continued from previous page...

Mol	Chain	Non-H	H(model)	H(added)	Clashes	Symm-Clashes
2	B	57	0	76	6	0
3	A	7	0	10	2	0
3	B	7	0	10	0	0
4	B	12	0	16	0	0
5	A	7	0	0	2	0
5	B	14	0	0	2	0
All	All	7783	0	7914	236	0

The all-atom clashscore is defined as the number of clashes found per 1000 atoms (including hydrogen atoms). The all-atom clashscore for this structure is 15.

All (236) close contacts within the same asymmetric unit are listed below, sorted by their clash magnitude.

Atom-1	Atom-2	Interatomic distance (Å)	Clash overlap (Å)
1:B:304:LEU:HD21	1:B:310:TYR:CE1	1.07	1.59
1:B:304:LEU:CD2	1:B:310:TYR:CE1	1.88	1.56
1:B:304:LEU:CD2	1:B:310:TYR:CD1	1.96	1.46
1:A:185:LEU:CD2	1:A:194:PRO:HG2	1.67	1.24
1:A:185:LEU:CD2	1:A:194:PRO:CG	2.20	1.18
1:A:155:GLN:NE2	1:A:159:PRO:O	1.77	1.17
1:A:185:LEU:HD22	1:A:194:PRO:CG	1.74	1.14
1:B:304:LEU:C	1:B:309:ARG:N	2.04	1.09
1:B:304:LEU:HD23	1:B:310:TYR:CD1	1.83	1.09
1:A:185:LEU:HD23	1:A:194:PRO:HG2	1.32	1.05
1:B:304:LEU:O	1:B:309:ARG:N	1.89	1.03
1:B:155:GLN:NE2	1:B:159:PRO:O	1.94	1.01
1:A:339:VAL:CG1	1:A:341:PHE:CE1	2.51	0.94
1:B:304:LEU:HD22	1:B:310:TYR:CD1	2.01	0.92
1:B:304:LEU:HD21	1:B:310:TYR:HE1	1.10	0.90
1:B:304:LEU:HD21	1:B:310:TYR:CZ	2.04	0.89
1:A:342:GLY:HA2	1:A:344:PHE:CE1	2.07	0.88
1:A:185:LEU:HD22	1:A:194:PRO:CB	2.04	0.87
1:A:339:VAL:HG12	1:A:341:PHE:CE1	2.11	0.86
1:A:301:ASP:OD2	1:A:303:ARG:NE	2.10	0.85
1:B:319:LEU:HD23	1:B:325:TYR:HB2	1.57	0.84
1:A:287:GLU:OE2	2:A:602:HTG:O2	1.95	0.82
1:A:185:LEU:CD2	1:A:194:PRO:HG3	2.09	0.82
1:B:160:LEU:HD22	1:B:175:LEU:HD23	1.61	0.82
1:A:13:ARG:O	1:A:16:LEU:HB2	1.80	0.80
1:A:166:ILE:HG22	1:A:167:MET:HG3	1.65	0.78
1:B:304:LEU:CD2	1:B:310:TYR:HD1	1.92	0.78

Continued on next page...

Continued from previous page...

Atom-1	Atom-2	Interatomic distance (Å)	Clash overlap (Å)
1:A:185:LEU:HD22	1:A:194:PRO:HG3	1.64	0.77
1:A:74:TRP:CD1	1:A:420:ILE:HD12	2.20	0.77
1:A:50:ASN:C	1:A:51:ARG:HG2	2.05	0.77
1:A:9:ARG:HH11	1:A:9:ARG:HG2	1.50	0.76
1:B:304:LEU:HA	1:B:310:TYR:H	1.50	0.76
1:A:50:ASN:ND2	2:A:601:HTG:O3	2.16	0.75
1:A:9:ARG:HD3	1:A:9:ARG:O	1.87	0.74
1:A:9:ARG:NH1	1:A:9:ARG:HG2	2.02	0.73
1:B:9:ARG:CD	1:B:51:ARG:HH22	2.03	0.72
1:A:339:VAL:HG12	1:A:341:PHE:CD1	2.26	0.71
1:B:166:ILE:HG22	1:B:167:MET:HG3	1.72	0.71
2:A:602:HTG:H1'2	1:B:247:LYS:HG2	1.72	0.70
1:B:9:ARG:HD2	1:B:51:ARG:HH22	1.56	0.70
1:A:339:VAL:HG11	1:A:341:PHE:CE1	2.27	0.69
1:A:9:ARG:HD3	1:A:9:ARG:C	2.13	0.69
1:A:30:PRO:CD	1:A:420:ILE:HG22	2.24	0.68
1:A:10:GLN:O	1:A:13:ARG:HB2	1.93	0.68
1:A:73:ASN:HD21	3:A:603:PEG:H41	1.56	0.68
1:A:159:PRO:O	1:A:160:LEU:HB2	1.94	0.68
1:A:76:TYR:HB2	1:A:94:VAL:HG21	1.75	0.67
1:B:329:SER:O	1:B:332:ARG:HD2	1.95	0.67
1:B:500:PHE:O	1:B:503:VAL:HG22	1.95	0.67
1:B:269:ALA:O	5:B:702:HOH:O	2.14	0.66
1:A:185:LEU:HD22	1:A:194:PRO:HB3	1.78	0.66
1:B:304:LEU:HD22	1:B:310:TYR:CE1	2.14	0.66
1:A:74:TRP:HD1	1:A:420:ILE:CD1	2.08	0.66
1:B:420:ILE:HD12	1:B:424:GLN:NE2	2.10	0.65
1:A:157:ASP:OD1	1:A:430:ARG:NH2	2.27	0.65
1:B:440:LEU:HB3	1:B:452:ILE:HB	1.78	0.65
1:A:247:LYS:NZ	2:B:601:HTG:O2	2.31	0.64
1:A:74:TRP:HD1	1:A:420:ILE:HD12	1.63	0.64
1:A:334:ASN:O	1:A:372:GLN:NE2	2.27	0.63
1:B:160:LEU:CD2	1:B:175:LEU:HD23	2.27	0.63
1:B:74:TRP:CB	1:B:419:SER:HB3	2.29	0.62
1:B:234:SER:O	1:B:352:ARG:NH2	2.34	0.61
1:A:339:VAL:O	1:A:341:PHE:O	2.19	0.61
1:B:319:LEU:HD23	1:B:325:TYR:CB	2.29	0.61
1:A:142:VAL:HG12	1:A:143:LEU:HG	1.83	0.60
1:B:304:LEU:HD22	1:B:310:TYR:HD1	1.58	0.60
1:A:9:ARG:HH11	1:A:9:ARG:CG	2.14	0.60
2:A:602:HTG:H1'2	1:B:247:LYS:HE2	1.84	0.60

Continued on next page...

Continued from previous page...

Atom-1	Atom-2	Interatomic distance (Å)	Clash overlap (Å)
1:A:27:ALA:HA	1:A:33:VAL:O	2.02	0.60
1:B:286:GLY:HA3	2:B:604:HTG:H2'2	1.83	0.60
1:B:410:ILE:HG22	1:B:443:SER:HB3	1.84	0.59
1:B:448:ILE:H	1:B:448:ILE:HD12	1.68	0.59
1:A:160:LEU:CD2	1:A:175:LEU:HD23	2.33	0.58
1:A:143:LEU:O	1:A:144:THR:OG1	2.17	0.58
1:A:74:TRP:CD1	1:A:420:ILE:CD1	2.85	0.58
1:B:160:LEU:HD11	1:B:202:PHE:CE1	2.40	0.57
1:A:409:THR:HG23	1:A:442:ARG:HD2	1.87	0.57
1:A:160:LEU:HD22	1:A:175:LEU:HD23	1.85	0.56
1:A:191:ASN:O	1:A:194:PRO:HD2	2.05	0.56
1:A:190:ARG:HH12	2:A:601:HTG:H6'2	1.70	0.56
1:A:409:THR:HG22	1:A:440:LEU:HD11	1.86	0.56
1:A:30:PRO:HD3	1:A:420:ILE:HG22	1.88	0.56
1:A:339:VAL:HG11	1:A:341:PHE:CZ	2.41	0.56
1:A:12:ILE:O	1:A:16:LEU:HG	2.06	0.56
1:A:344:PHE:CD2	1:A:364:SER:HB3	2.41	0.56
1:A:116:TRP:NE1	1:A:502:ALA:O	2.31	0.56
1:A:339:VAL:HG12	1:A:340:PRO:HD2	1.87	0.55
1:B:339:VAL:HG12	1:B:340:PRO:HD2	1.89	0.55
1:A:397:ARG:HG3	1:A:483:TYR:CE2	2.42	0.55
1:B:371:ILE:HD11	1:B:398:ASP:HB3	1.89	0.54
1:A:45:GLN:HG2	1:A:181:GLY:HA2	1.88	0.54
1:A:339:VAL:CG1	1:A:340:PRO:CD	2.86	0.53
1:B:371:ILE:HD13	1:B:399:ASN:ND2	2.24	0.53
1:A:10:GLN:HG3	1:A:11:ARG:H	1.74	0.53
1:B:304:LEU:CD2	1:B:310:TYR:HE1	1.80	0.53
1:A:215:THR:O	5:A:702:HOH:O	2.18	0.53
1:B:74:TRP:HB3	1:B:419:SER:HB3	1.89	0.53
1:A:338:LEU:H	1:A:367:ARG:NH1	2.07	0.53
1:A:410:ILE:HG22	1:A:443:SER:HB3	1.90	0.53
1:A:13:ARG:NH2	1:A:49:PHE:O	2.31	0.53
1:B:159:PRO:O	1:B:160:LEU:HB2	2.09	0.53
1:A:301:ASP:OD2	1:A:303:ARG:CD	2.57	0.52
1:A:319:LEU:HG	1:A:325:TYR:HB2	1.91	0.52
1:A:283:VAL:HG13	2:A:602:HTG:H6'2	1.91	0.52
1:A:249:TYR:OH	5:A:701:HOH:O	2.12	0.52
1:B:225:SER:OG	1:B:471:THR:OG1	2.22	0.52
1:A:10:GLN:HG3	1:A:11:ARG:N	2.25	0.52
1:A:78:SER:HB2	1:A:416:PHE:CE1	2.44	0.52
1:B:74:TRP:HB2	1:B:419:SER:HB3	1.91	0.52

Continued on next page...

Continued from previous page...

Atom-1	Atom-2	Interatomic distance (Å)	Clash overlap (Å)
1:A:287:GLU:CD	2:A:602:HTG:O2	2.49	0.52
1:A:53:PRO:HA	1:A:113:SER:HB3	1.92	0.51
1:A:163:LEU:HD11	1:A:205:PRO:HG2	1.90	0.51
1:A:205:PRO:HB3	1:A:208:LEU:HD12	1.93	0.51
1:B:214:PHE:HB3	1:B:437:ALA:HB1	1.92	0.51
1:A:231:ILE:HD11	1:A:249:TYR:HE2	1.75	0.50
1:A:254:ALA:HA	1:A:257:MET:HG3	1.93	0.50
1:B:166:ILE:HD12	1:B:208:LEU:HD13	1.94	0.50
1:A:16:LEU:HD23	1:A:19:LEU:HD12	1.94	0.49
1:A:331:ASP:OD2	1:A:376:SER:O	2.29	0.49
1:B:270:ILE:HB	1:B:299:ILE:HG13	1.93	0.49
1:A:225:SER:HA	1:A:470:LEU:O	2.13	0.48
1:A:169:VAL:HB	1:A:431:MET:HE2	1.94	0.48
1:A:131:LEU:O	1:A:134:VAL:HG12	2.12	0.48
2:B:603:HTG:O4	5:B:703:HOH:O	2.19	0.48
1:A:236:LYS:HG3	1:A:271:THR:HG21	1.96	0.48
1:A:489:TRP:HA	1:A:492:TRP:HB2	1.96	0.48
1:B:249:TYR:HB3	1:B:265:TRP:CZ2	2.48	0.48
1:B:431:MET:HE3	1:B:435:GLU:HG3	1.95	0.48
1:B:182:LEU:HB2	1:B:198:ALA:HB2	1.96	0.47
1:B:72:ILE:O	1:B:75:VAL:HG22	2.14	0.47
1:A:170:GLU:HA	1:A:173:ASN:ND2	2.29	0.47
3:A:603:PEG:H42	3:A:603:PEG:H22	1.48	0.47
1:B:131:LEU:HD12	1:B:131:LEU:HA	1.71	0.47
1:A:45:GLN:CD	1:A:124:VAL:HG12	2.34	0.47
1:A:316:ILE:HG12	1:A:410:ILE:HD11	1.96	0.47
1:A:45:GLN:OE1	1:A:123:ARG:NH1	2.48	0.47
2:A:602:HTG:C1'	1:B:247:LYS:HE2	2.44	0.47
1:A:274:GLU:OE1	1:A:325:TYR:OH	2.25	0.46
1:A:400:PHE:O	1:A:401:ARG:NH1	2.43	0.46
1:A:72:ILE:HD13	1:A:97:LEU:HD23	1.97	0.46
1:A:10:GLN:CG	1:A:11:ARG:N	2.77	0.46
1:A:339:VAL:HG12	1:A:340:PRO:CD	2.46	0.46
1:A:339:VAL:CG1	1:A:340:PRO:HD2	2.45	0.46
1:A:430:ARG:HG2	1:A:452:ILE:HD12	1.97	0.46
1:B:444:THR:HG22	1:B:445:ASN:N	2.31	0.46
1:A:387:CYS:SG	1:A:388:TYR:N	2.89	0.46
1:A:254:ALA:O	1:A:257:MET:HG3	2.15	0.46
1:B:278:GLN:O	1:B:282:LYS:HG3	2.15	0.46
1:A:338:LEU:H	1:A:367:ARG:HH12	1.63	0.46
1:A:155:GLN:HE21	1:A:160:LEU:HB2	1.80	0.45

Continued on next page...

Continued from previous page...

Atom-1	Atom-2	Interatomic distance (Å)	Clash overlap (Å)
1:A:400:PHE:HE1	1:A:438:ARG:HG3	1.81	0.45
1:B:418:LYS:CD	1:B:418:LYS:N	2.76	0.45
1:B:53:PRO:HA	1:B:113:SER:HB3	1.98	0.45
1:A:184:ALA:O	1:A:188:VAL:HG13	2.17	0.45
1:A:153:TYR:CD1	1:A:431:MET:HG3	2.52	0.45
1:B:27:ALA:HA	1:B:33:VAL:O	2.17	0.45
1:B:382:LEU:HD23	1:B:406:TYR:HB2	1.98	0.45
1:A:185:LEU:HD21	1:A:194:PRO:HG3	1.95	0.45
1:B:406:TYR:HE1	1:B:474:VAL:HG12	1.81	0.45
1:B:489:TRP:CG	1:B:490:PRO:HD3	2.51	0.45
1:B:503:VAL:O	1:B:505:MET:N	2.48	0.45
1:A:10:GLN:O	1:A:13:ARG:N	2.50	0.45
1:B:13:ARG:HH22	2:B:602:HTG:H61	1.82	0.45
1:A:61:PHE:HE2	1:A:103:LEU:HD12	1.82	0.45
1:B:9:ARG:HD3	1:B:51:ARG:HH22	1.80	0.45
1:B:50:ASN:HB3	2:B:602:HTG:H61	1.98	0.45
1:A:68:PHE:O	1:A:72:ILE:HG13	2.17	0.45
1:A:85:MET:HB2	1:A:90:ASN:OD1	2.16	0.45
1:A:15:LEU:HD22	1:A:15:LEU:HA	1.84	0.44
1:A:341:PHE:CD1	1:A:341:PHE:N	2.83	0.44
1:B:120:THR:O	1:B:123:ARG:N	2.48	0.44
1:B:9:ARG:HB3	1:B:10:GLN:H	1.56	0.44
1:B:432:ARG:HA	1:B:432:ARG:HD3	1.51	0.44
1:A:431:MET:HE3	1:A:435:GLU:HG3	1.98	0.44
1:A:500:PHE:O	1:A:503:VAL:HG22	2.17	0.44
1:B:163:LEU:HD12	1:B:208:LEU:HD12	1.99	0.44
1:A:333:TYR:OH	1:A:389:GLU:OE1	2.22	0.44
1:B:339:VAL:CG1	1:B:340:PRO:HD2	2.47	0.44
1:B:419:SER:O	1:B:422:PRO:HD2	2.18	0.44
1:A:234:SER:O	1:A:352:ARG:NH2	2.47	0.44
1:B:19:LEU:HD23	1:B:19:LEU:HA	1.82	0.44
1:B:249:TYR:HB3	1:B:265:TRP:CE2	2.53	0.44
1:A:417:GLY:O	1:A:418:LYS:HB2	2.17	0.43
1:B:254:ALA:O	1:B:257:MET:HG3	2.17	0.43
1:B:34:TRP:CD2	1:B:35:PRO:HD3	2.53	0.43
1:B:144:THR:OG1	1:B:340:PRO:HD3	2.18	0.43
1:B:400:PHE:O	1:B:401:ARG:NH1	2.48	0.43
1:B:160:LEU:CD2	1:B:175:LEU:CD2	2.94	0.43
1:A:278:GLN:O	1:A:282:LYS:HG3	2.18	0.43
1:B:253:THR:HG23	1:B:263:ILE:HD13	2.01	0.43
1:A:140:GLY:O	1:A:145:GLY:HA3	2.19	0.43

Continued on next page...

Continued from previous page...

Atom-1	Atom-2	Interatomic distance (Å)	Clash overlap (Å)
1:A:420:ILE:H	1:A:420:ILE:HG13	1.66	0.43
1:A:432:ARG:HA	1:A:432:ARG:HD3	1.77	0.43
1:A:301:ASP:OD2	1:A:303:ARG:HD2	2.17	0.43
1:B:296:VAL:HG22	1:B:318:THR:HG22	2.01	0.43
1:B:407:LEU:HB2	1:B:440:LEU:HD12	1.99	0.43
1:A:481:THR:O	1:A:485:ARG:HG3	2.18	0.43
1:B:142:VAL:HG12	1:B:143:LEU:HG	2.01	0.43
1:B:250:TYR:CE1	2:B:601:HTG:H4'1	2.54	0.43
1:B:185:LEU:HD12	1:B:189:LYS:HG3	2.01	0.42
1:B:74:TRP:HB2	1:B:419:SER:CB	2.49	0.42
1:A:235:LEU:O	1:A:237:TRP:N	2.52	0.42
1:A:74:TRP:HD1	1:A:420:ILE:HD11	1.81	0.42
1:B:16:LEU:HD23	1:B:16:LEU:HA	1.87	0.42
1:A:257:MET:HE1	1:A:288:LEU:HA	2.01	0.42
1:A:340:PRO:HD2	1:A:341:PHE:CD1	2.54	0.42
1:B:51:ARG:HD3	1:B:51:ARG:HA	1.64	0.42
1:A:437:ALA:HA	1:A:454:PRO:O	2.19	0.42
1:A:344:PHE:CE2	1:A:364:SER:HB3	2.55	0.42
1:A:163:LEU:HD11	1:A:205:PRO:CG	2.50	0.42
1:A:391:ILE:O	1:A:432:ARG:NH2	2.53	0.42
1:B:151:PHE:O	1:B:154:SER:OG	2.24	0.42
1:A:286:GLY:HA3	2:A:602:HTG:H7'2	2.01	0.41
1:A:338:LEU:HD22	1:A:343:GLU:HB2	2.02	0.41
1:A:50:ASN:C	1:A:51:ARG:CG	2.83	0.41
1:A:13:ARG:O	1:A:16:LEU:CB	2.60	0.41
1:A:231:ILE:HD11	1:A:245:THR:HG23	2.03	0.41
1:A:51:ARG:HB3	1:A:51:ARG:HE	1.58	0.41
1:A:488:ASN:HB3	1:A:492:TRP:CD1	2.56	0.41
2:A:601:HTG:H1'1	2:A:601:HTG:H4'1	1.80	0.41
2:A:602:HTG:H1'2	1:B:247:LYS:CE	2.50	0.41
1:B:254:ALA:HA	1:B:257:MET:HG3	2.02	0.41
1:B:153:TYR:CD1	1:B:431:MET:HG3	2.56	0.41
1:B:9:ARG:HA	1:B:9:ARG:HD3	1.67	0.41
1:B:20:PHE:O	1:B:23:CYS:HB3	2.20	0.41
1:B:140:GLY:O	1:B:145:GLY:HA3	2.20	0.41
1:A:201:LEU:HA	1:A:201:LEU:HD23	1.85	0.41
1:B:489:TRP:CD2	1:B:490:PRO:HD3	2.56	0.41
1:A:339:VAL:HG13	1:A:340:PRO:HD3	2.03	0.40
1:A:369:PRO:HB2	1:A:372:GLN:HG2	2.02	0.40
2:A:602:HTG:H1'2	1:B:247:LYS:CG	2.45	0.40
1:A:341:PHE:HD1	1:A:341:PHE:H	1.60	0.40

Continued on next page...

Continued from previous page...

Atom-1	Atom-2	Interatomic distance (Å)	Clash overlap (Å)
1:A:329:SER:O	1:A:332:ARG:HD2	2.22	0.40
1:A:356:PRO:HG2	1:A:357:PHE:CD1	2.57	0.40
1:A:304:LEU:H	1:A:304:LEU:HD12	1.87	0.40
1:B:38:ILE:O	1:B:42:MET:HG2	2.22	0.40

There are no symmetry-related clashes.

5.3 Torsion angles [i](#)

5.3.1 Protein backbone [i](#)

In the following table, the Percentiles column shows the percent Ramachandran outliers of the chain as a percentile score with respect to all X-ray entries followed by that with respect to entries of similar resolution.

The Analysed column shows the number of residues for which the backbone conformation was analysed, and the total number of residues.

Mol	Chain	Analysed	Favoured	Allowed	Outliers	Percentiles	
1	A	482/516 (93%)	451 (94%)	27 (6%)	4 (1%)	19	37
1	B	484/516 (94%)	458 (95%)	25 (5%)	1 (0%)	47	69
All	All	966/1032 (94%)	909 (94%)	52 (5%)	5 (0%)	29	50

All (5) Ramachandran outliers are listed below:

Mol	Chain	Res	Type
1	A	236	LYS
1	B	86	PRO
1	A	119	THR
1	A	299	ILE
1	A	377	VAL

5.3.2 Protein sidechains [i](#)

In the following table, the Percentiles column shows the percent sidechain outliers of the chain as a percentile score with respect to all X-ray entries followed by that with respect to entries of similar resolution.

The Analysed column shows the number of residues for which the sidechain conformation was analysed, and the total number of residues.

Mol	Chain	Analysed	Rotameric	Outliers	Percentiles	
1	A	404/428 (94%)	388 (96%)	16 (4%)	31	55
1	B	402/428 (94%)	389 (97%)	13 (3%)	39	63
All	All	806/856 (94%)	777 (96%)	29 (4%)	35	59

All (29) residues with a non-rotameric sidechain are listed below:

Mol	Chain	Res	Type
1	A	9	ARG
1	A	10	GLN
1	A	15	LEU
1	A	51	ARG
1	A	73	ASN
1	A	95	VAL
1	A	113	SER
1	A	161	LYS
1	A	163	LEU
1	A	294	SER
1	A	303	ARG
1	A	304	LEU
1	A	332	ARG
1	A	344	PHE
1	A	416	PHE
1	A	464	GLN
1	B	15	LEU
1	B	19	LEU
1	B	79	ILE
1	B	95	VAL
1	B	113	SER
1	B	115	LEU
1	B	122	LEU
1	B	163	LEU
1	B	187	LEU
1	B	303	ARG
1	B	376	SER
1	B	418	LYS
1	B	440	LEU

Some sidechains can be flipped to improve hydrogen bonding and reduce clashes. All (1) such sidechains are listed below:

Mol	Chain	Res	Type
1	A	50	ASN

5.3.3 RNA ⓘ

There are no RNA molecules in this entry.

5.4 Non-standard residues in protein, DNA, RNA chains ⓘ

There are no non-standard protein/DNA/RNA residues in this entry.

5.5 Carbohydrates ⓘ

There are no monosaccharides in this entry.

5.6 Ligand geometry ⓘ

10 ligands are modelled in this entry.

In the following table, the Counts columns list the number of bonds (or angles) for which Mogul statistics could be retrieved, the number of bonds (or angles) that are observed in the model and the number of bonds (or angles) that are defined in the Chemical Component Dictionary. The Link column lists molecule types, if any, to which the group is linked. The Z score for a bond length (or angle) is the number of standard deviations the observed value is removed from the expected value. A bond length (or angle) with $|Z| > 2$ is considered an outlier worth inspection. RMSZ is the root-mean-square of all Z scores of the bond lengths (or angles).

Mol	Type	Chain	Res	Link	Bond lengths			Bond angles		
					Counts	RMSZ	# $ Z > 2$	Counts	RMSZ	# $ Z > 2$
3	PEG	B	605	-	6,6,6	0.53	0	5,5,5	0.30	0
3	PEG	A	603	-	6,6,6	0.49	0	5,5,5	0.42	0
2	HTG	B	603	-	19,19,19	2.11	7 (36%)	23,24,24	2.02	4 (17%)
2	HTG	A	601	-	19,19,19	2.00	7 (36%)	23,24,24	1.62	2 (8%)
2	HTG	B	604	-	6,6,19	0.12	0	5,5,24	0.38	0
4	GOL	B	606	-	5,5,5	0.29	0	5,5,5	0.41	0
4	GOL	B	607	-	5,5,5	0.42	0	5,5,5	0.33	0
2	HTG	A	602	-	19,19,19	1.67	2 (10%)	23,24,24	2.36	8 (34%)
2	HTG	B	602	-	11,12,19	2.38	6 (54%)	15,17,24	2.12	6 (40%)
2	HTG	B	601	-	19,19,19	1.83	6 (31%)	23,24,24	1.10	3 (13%)

In the following table, the Chirals column lists the number of chiral outliers, the number of chiral centers analysed, the number of these observed in the model and the number defined in the Chemical Component Dictionary. Similar counts are reported in the Torsion and Rings columns. '-' means no outliers of that kind were identified.

Mol	Type	Chain	Res	Link	Chirals	Torsions	Rings
3	PEG	B	605	-	-	3/4/4/4	-
3	PEG	A	603	-	-	3/4/4/4	-
2	HTG	B	603	-	-	8/10/30/30	0/1/1/1
2	HTG	A	601	-	-	5/10/30/30	0/1/1/1
2	HTG	B	604	-	-	1/4/4/30	-
4	GOL	B	606	-	-	0/4/4/4	-
4	GOL	B	607	-	-	2/4/4/4	-
2	HTG	A	602	-	-	5/10/30/30	0/1/1/1
2	HTG	B	602	-	-	1/2/22/30	0/1/1/1
2	HTG	B	601	-	-	5/10/30/30	0/1/1/1

All (28) bond length outliers are listed below:

Mol	Chain	Res	Type	Atoms	Z	Observed(Å)	Ideal(Å)
2	A	602	HTG	C1-S1	-5.17	1.72	1.80
2	B	603	HTG	O5-C5	4.52	1.55	1.44
2	B	603	HTG	O5-C1	4.33	1.49	1.42
2	A	601	HTG	O5-C5	4.26	1.54	1.44
2	B	602	HTG	O5-C5	4.08	1.54	1.44
2	A	601	HTG	O5-C1	4.05	1.48	1.42
2	B	601	HTG	O5-C5	3.82	1.53	1.44
2	A	602	HTG	C1'-S1	-3.62	1.76	1.81
2	B	602	HTG	O5-C1	3.18	1.47	1.42
2	B	601	HTG	O5-C1	3.01	1.47	1.42
2	B	602	HTG	C6-C5	-2.97	1.41	1.51
2	B	603	HTG	C3-C2	-2.91	1.44	1.52
2	A	601	HTG	C6-C5	-2.91	1.42	1.51
2	B	601	HTG	C6-C5	-2.82	1.42	1.51
2	B	601	HTG	O3-C3	2.79	1.49	1.43
2	B	602	HTG	O3-C3	2.66	1.49	1.43
2	B	603	HTG	C6-C5	-2.66	1.42	1.51
2	B	601	HTG	C3-C2	-2.57	1.45	1.52
2	B	602	HTG	C3-C2	-2.54	1.45	1.52
2	A	601	HTG	O2-C2	2.53	1.48	1.43
2	B	603	HTG	O2-C2	2.50	1.48	1.43
2	A	601	HTG	O3-C3	2.42	1.48	1.43
2	A	601	HTG	C3-C2	-2.38	1.46	1.52
2	B	603	HTG	O3-C3	2.36	1.48	1.43
2	B	602	HTG	O2-C2	2.13	1.48	1.43
2	B	601	HTG	O2-C2	2.12	1.48	1.43
2	B	603	HTG	C1'-S1	2.11	1.84	1.81
2	A	601	HTG	C4-C5	2.04	1.57	1.53

All (23) bond angle outliers are listed below:

Mol	Chain	Res	Type	Atoms	Z	Observed(°)	Ideal(°)
2	B	603	HTG	C1'-S1-C1	7.53	114.17	100.09
2	A	602	HTG	O5-C1-S1	-6.86	93.41	109.82
2	A	601	HTG	C1'-S1-C1	6.48	112.21	100.09
2	A	602	HTG	C1'-S1-C1	6.19	111.67	100.09
2	B	602	HTG	C3-C4-C5	4.00	117.37	110.24
2	B	603	HTG	C1-O5-C5	3.83	119.64	112.58
2	B	602	HTG	C6-C5-C4	-3.16	105.61	113.00
2	A	602	HTG	O5-C1-C2	-3.01	106.53	110.31
2	B	601	HTG	C1'-S1-C1	2.97	105.64	100.09
2	B	602	HTG	O5-C1-C2	2.95	114.03	110.31
2	B	603	HTG	O5-C5-C6	2.87	113.57	106.44
2	B	602	HTG	C1-C2-C3	2.64	115.81	110.59
2	A	601	HTG	O5-C1-C2	2.63	113.62	110.31
2	A	602	HTG	O2-C2-C3	-2.58	104.38	110.35
2	B	603	HTG	O5-C1-C2	2.55	113.52	110.31
2	B	602	HTG	C4-C3-C2	2.33	114.89	110.82
2	B	601	HTG	O5-C1-C2	2.26	113.16	110.31
2	A	602	HTG	C3-C4-C5	-2.17	106.37	110.24
2	A	602	HTG	C1-C2-C3	-2.16	106.32	110.59
2	A	602	HTG	O2-C2-C1	2.10	114.12	110.27
2	B	602	HTG	O2-C2-C1	-2.09	106.42	110.27
2	A	602	HTG	O5-C5-C4	-2.09	105.90	109.69
2	B	601	HTG	O5-C5-C4	-2.08	105.91	109.69

There are no chirality outliers.

All (33) torsion outliers are listed below:

Mol	Chain	Res	Type	Atoms
2	B	603	HTG	O5-C1-S1-C1'
2	B	603	HTG	C2'-C1'-S1-C1
2	A	601	HTG	O5-C1-S1-C1'
4	B	607	GOL	O1-C1-C2-C3
2	A	602	HTG	C2-C1-S1-C1'
2	A	602	HTG	O5-C1-S1-C1'
2	A	601	HTG	C1'-C2'-C3'-C4'
3	A	603	PEG	C4-C3-O2-C2
2	B	603	HTG	O5-C5-C6-O6
2	B	601	HTG	S1-C1'-C2'-C3'
2	B	601	HTG	C3'-C4'-C5'-C6'
2	B	603	HTG	C4-C5-C6-O6
2	A	602	HTG	O5-C5-C6-O6

Continued on next page...

Continued from previous page...

Mol	Chain	Res	Type	Atoms
4	B	607	GOL	O1-C1-C2-O2
3	A	603	PEG	O1-C1-C2-O2
3	A	603	PEG	O2-C3-C4-O4
2	B	603	HTG	C1'-C2'-C3'-C4'
2	B	603	HTG	C2'-C3'-C4'-C5'
2	B	601	HTG	C2'-C3'-C4'-C5'
2	B	603	HTG	C3'-C4'-C5'-C6'
2	B	602	HTG	O5-C5-C6-O6
2	A	601	HTG	C3'-C4'-C5'-C6'
2	A	602	HTG	C1'-C2'-C3'-C4'
2	A	601	HTG	O5-C5-C6-O6
2	B	601	HTG	C4'-C5'-C6'-C7'
2	A	601	HTG	C4-C5-C6-O6
2	B	603	HTG	C4'-C5'-C6'-C7'
2	B	604	HTG	C2'-C3'-C4'-C5'
3	B	605	PEG	C1-C2-O2-C3
3	B	605	PEG	O2-C3-C4-O4
2	B	601	HTG	C1'-C2'-C3'-C4'
3	B	605	PEG	O1-C1-C2-O2
2	A	602	HTG	C2'-C3'-C4'-C5'

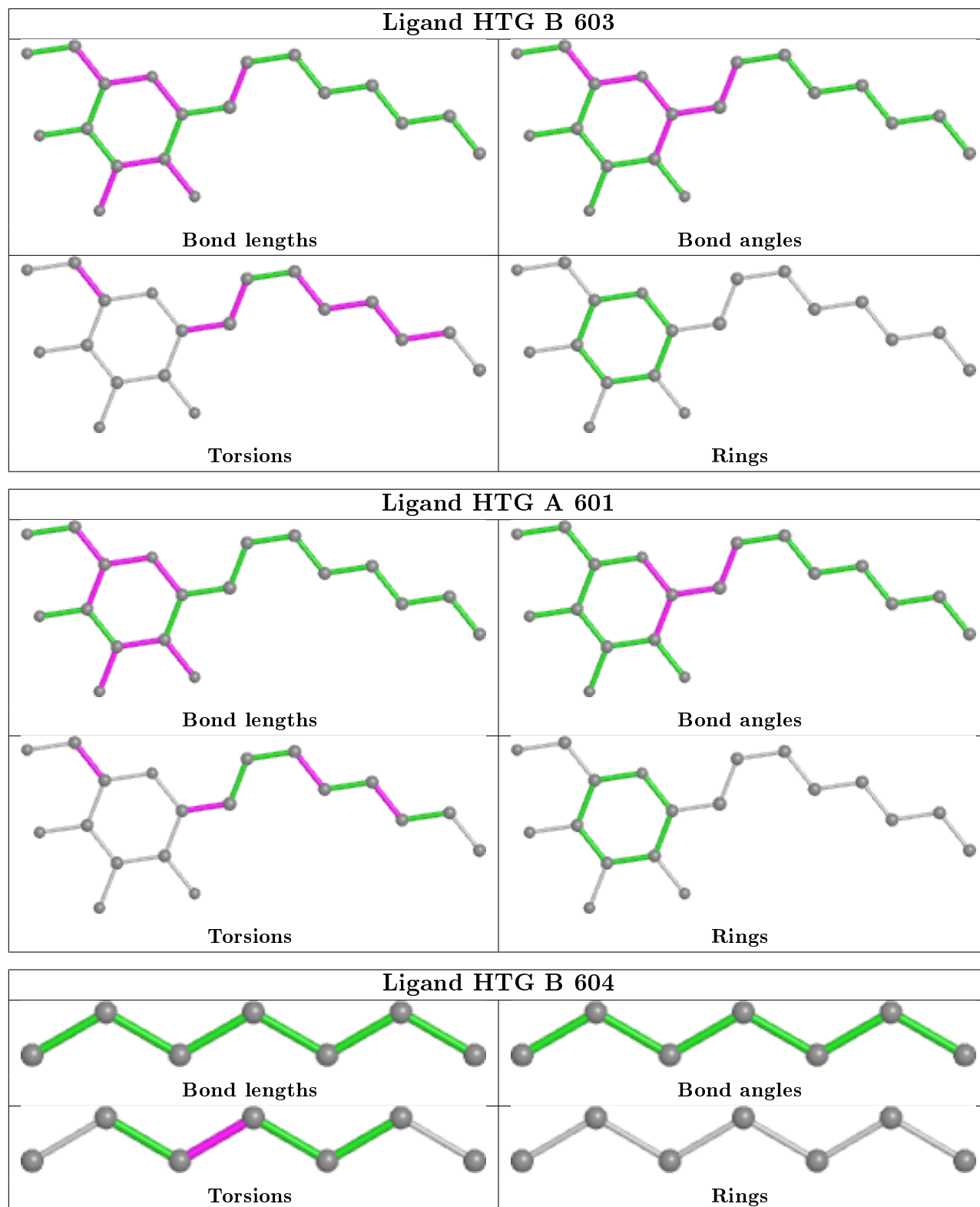
There are no ring outliers.

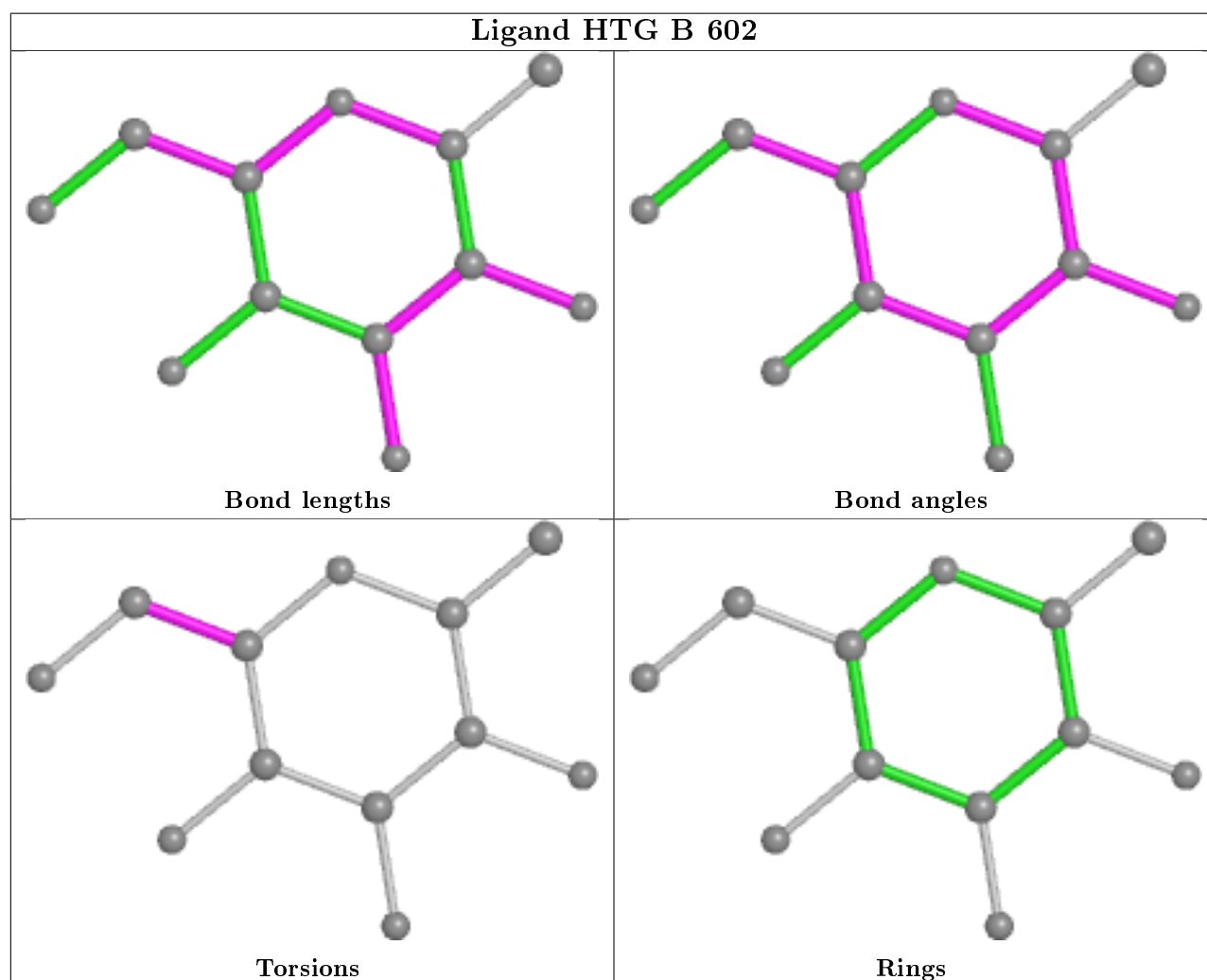
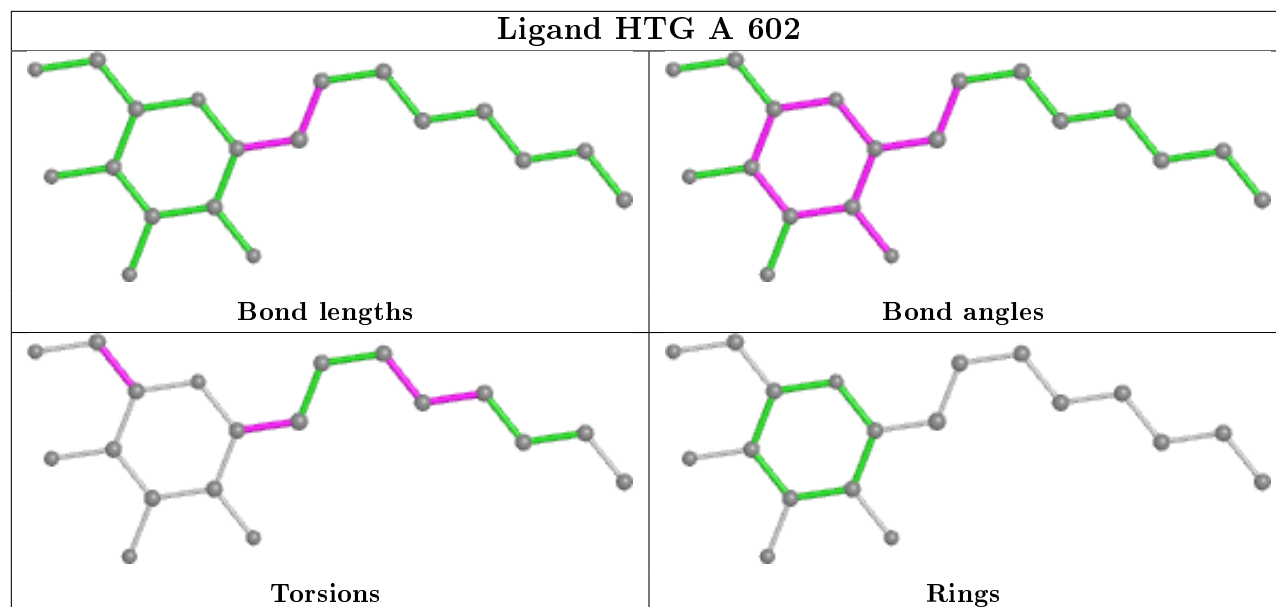
7 monomers are involved in 20 short contacts:

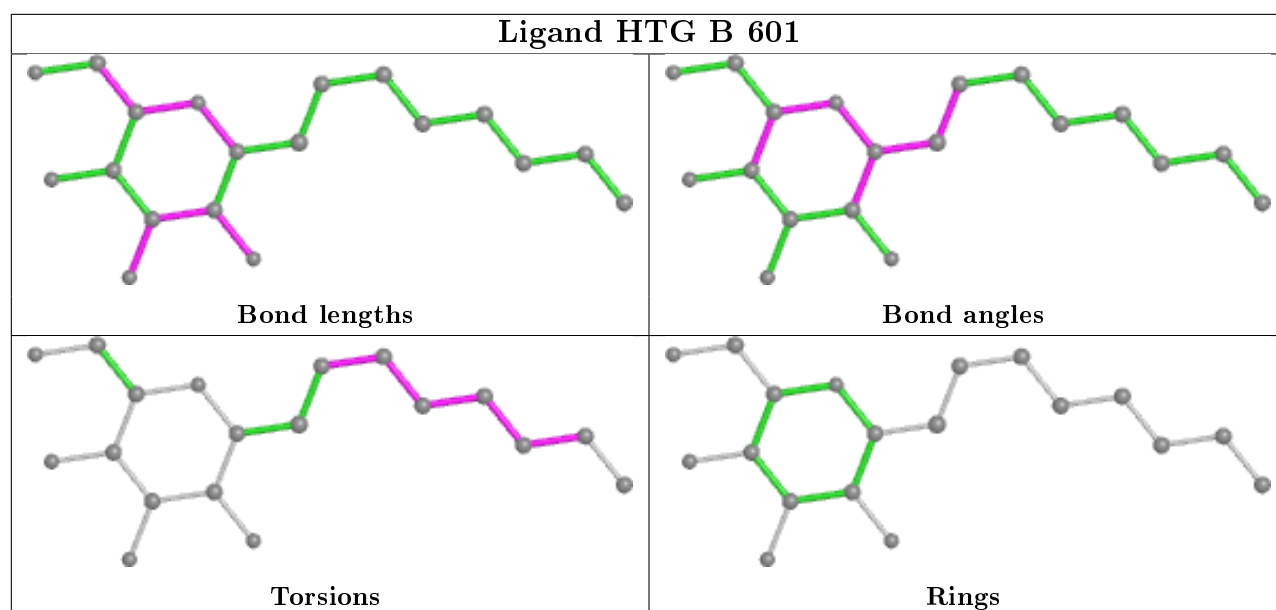
Mol	Chain	Res	Type	Clashes	Symm-Clashes
3	A	603	PEG	2	0
2	B	603	HTG	1	0
2	A	601	HTG	3	0
2	B	604	HTG	1	0
2	A	602	HTG	9	0
2	B	602	HTG	2	0
2	B	601	HTG	2	0

The following is a two-dimensional graphical depiction of Mogul quality analysis of bond lengths, bond angles, torsion angles, and ring geometry for all instances of the Ligand of Interest. In addition, ligands with molecular weight > 250 and outliers as shown on the validation Tables will also be included. For torsion angles, if less than 5% of the Mogul distribution of torsion angles is within 10 degrees of the torsion angle in question, then that torsion angle is considered an outlier. Any bond that is central to one or more torsion angles identified as an outlier by Mogul will be highlighted in the graph. For rings, the root-mean-square deviation (RMSD) between the ring in question and similar rings identified by Mogul is calculated over all ring torsion angles. If the average RMSD is greater than 60 degrees and the minimal RMSD between the ring in question and

any Mogul-identified rings is also greater than 60 degrees, then that ring is considered an outlier. The outliers are highlighted in purple. The color gray indicates Mogul did not find sufficient equivalents in the CSD to analyse the geometry.







5.7 Other polymers [i](#)

There are no such residues in this entry.

5.8 Polymer linkage issues [i](#)

There are no chain breaks in this entry.

6 Fit of model and data ⓘ

6.1 Protein, DNA and RNA chains ⓘ

In the following table, the column labelled ‘#RSRZ> 2’ contains the number (and percentage) of RSRZ outliers, followed by percent RSRZ outliers for the chain as percentile scores relative to all X-ray entries and entries of similar resolution. The OWAB column contains the minimum, median, 95th percentile and maximum values of the occupancy-weighted average B-factor per residue. The column labelled ‘Q< 0.9’ lists the number of (and percentage) of residues with an average occupancy less than 0.9.

Mol	Chain	Analysed	<RSRZ>	#RSRZ>2	OWAB(Å ²)	Q<0.9
1	A	488/516 (94%)	0.64	63 (12%) 3 2	32, 49, 77, 94	0
1	B	490/516 (94%)	0.38	31 (6%) 20 17	25, 42, 67, 88	0
All	All	978/1032 (94%)	0.51	94 (9%) 8 6	25, 45, 73, 94	0

All (94) RSRZ outliers are listed below:

Mol	Chain	Res	Type	RSRZ
1	A	304	LEU	6.5
1	B	88	PRO	6.4
1	A	55	GLN	6.1
1	A	357	PHE	6.0
1	A	391	ILE	5.3
1	B	357	PHE	5.2
1	A	355	ALA	5.0
1	A	367	ARG	4.8
1	B	86	PRO	4.8
1	B	89	VAL	4.7
1	B	304	LEU	4.6
1	A	387	CYS	4.6
1	B	361	PRO	4.5
1	B	310	TYR	4.4
1	A	342	GLY	4.2
1	B	489	TRP	4.1
1	A	341	PHE	4.0
1	A	340	PRO	3.9
1	A	338	LEU	3.9
1	B	87	GLY	3.8
1	B	80	ALA	3.8
1	B	341	PHE	3.8
1	A	49	PHE	3.8
1	B	141	TRP	3.7

Continued on next page...

Continued from previous page...

Mol	Chain	Res	Type	RSRZ
1	A	409	THR	3.5
1	A	54	LEU	3.5
1	A	385	ALA	3.5
1	A	390	ILE	3.5
1	A	298	GLY	3.4
1	A	356	PRO	3.4
1	B	90	ASN	3.4
1	A	330	ALA	3.4
1	A	361	PRO	3.4
1	A	428	MET	3.3
1	A	354	LEU	3.2
1	B	342	GLY	3.2
1	A	86	PRO	3.1
1	B	84	GLY	3.1
1	A	392	LEU	3.1
1	A	303	ARG	3.1
1	B	210	TYR	3.1
1	A	20	PHE	3.0
1	A	214	PHE	3.0
1	A	210	TYR	3.0
1	A	246	LEU	3.0
1	A	388	TYR	2.9
1	A	112	LEU	2.9
1	B	214	PHE	2.9
1	A	88	PRO	2.9
1	A	363	SER	2.9
1	A	386	ILE	2.8
1	A	81	THR	2.8
1	A	408	LEU	2.8
1	A	213	TRP	2.8
1	A	141	TRP	2.7
1	A	347	LEU	2.7
1	B	356	PRO	2.7
1	A	80	ALA	2.7
1	A	190	ARG	2.7
1	A	429	ALA	2.6
1	A	85	MET	2.6
1	A	87	GLY	2.6
1	A	280	PHE	2.5
1	B	391	ILE	2.5
1	A	256	LEU	2.5
1	A	50	ASN	2.5

Continued on next page...

Continued from previous page...

Mol	Chain	Res	Type	RSRZ
1	A	489	TRP	2.4
1	B	340	PRO	2.4
1	A	143	LEU	2.4
1	A	273	LEU	2.4
1	B	385	ALA	2.4
1	A	211	ILE	2.4
1	A	12	ILE	2.3
1	B	355	ALA	2.3
1	A	121	TRP	2.3
1	A	76	TYR	2.3
1	B	480	LEU	2.3
1	B	387	CYS	2.3
1	A	90	ASN	2.2
1	A	218	PRO	2.2
1	A	389	GLU	2.2
1	B	390	ILE	2.2
1	A	270	ILE	2.1
1	A	297	THR	2.1
1	B	114	ARG	2.1
1	B	9	ARG	2.1
1	B	83	GLY	2.1
1	B	280	PHE	2.1
1	A	302	ALA	2.1
1	B	353	PRO	2.1
1	A	15	LEU	2.1
1	A	379	GLY	2.0
1	A	500	PHE	2.0
1	B	54	LEU	2.0

6.2 Non-standard residues in protein, DNA, RNA chains [i](#)

There are no non-standard protein/DNA/RNA residues in this entry.

6.3 Carbohydrates [i](#)

There are no monosaccharides in this entry.

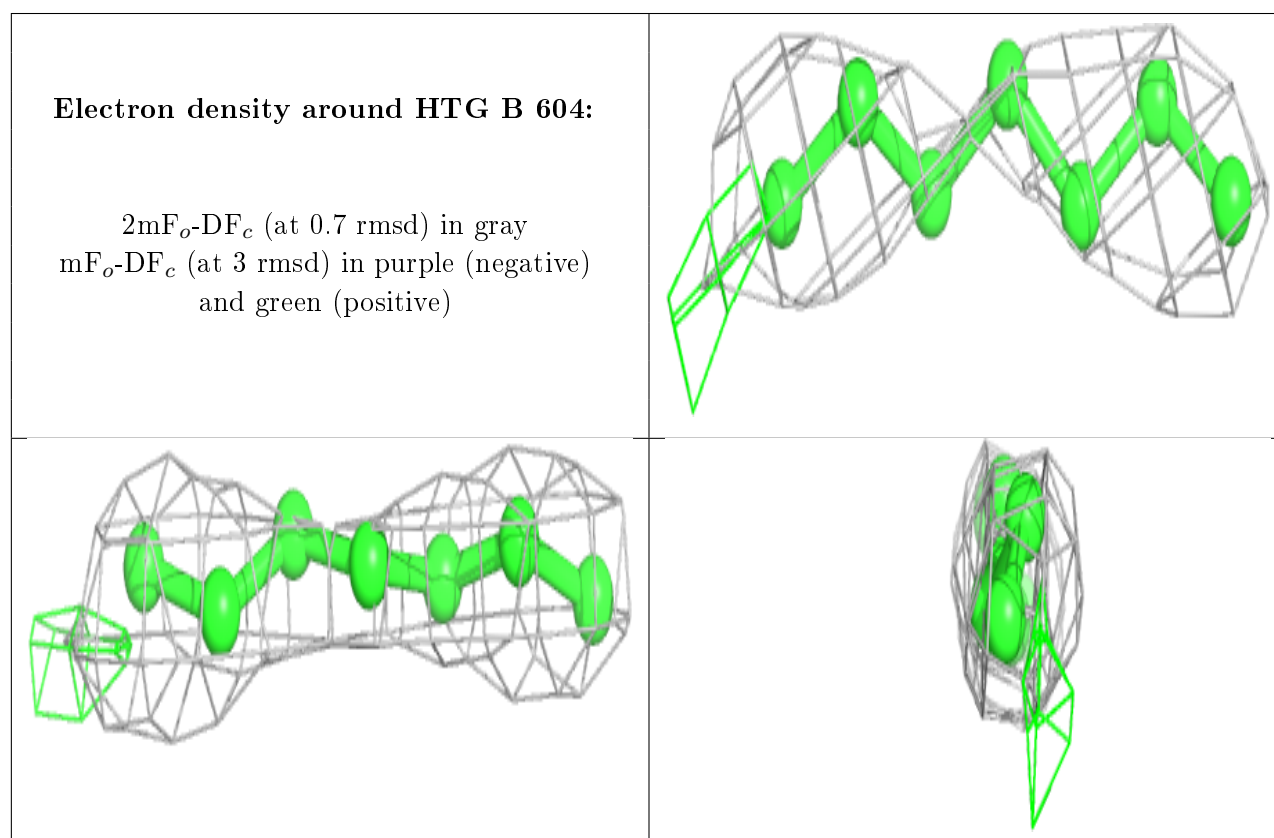
6.4 Ligands [i](#)

In the following table, the Atoms column lists the number of modelled atoms in the group and the number defined in the chemical component dictionary. The B-factors column lists the minimum,

median, 95th percentile and maximum values of B factors of atoms in the group. The column labelled 'Q< 0.9' lists the number of atoms with occupancy less than 0.9.

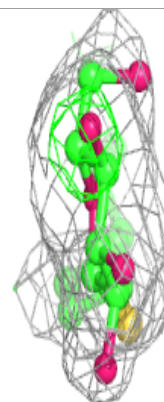
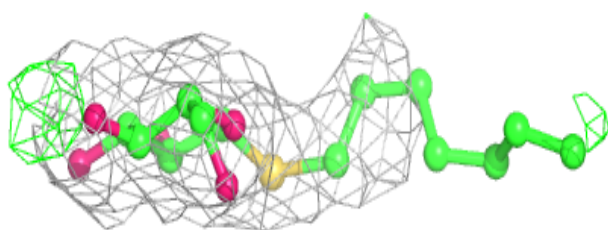
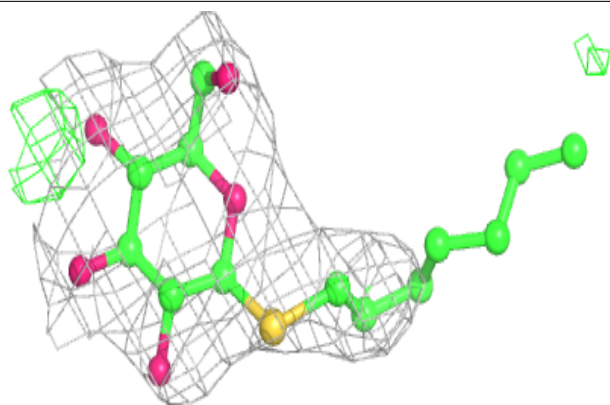
Mol	Type	Chain	Res	Atoms	RSCC	RSR	B-factors(Å ²)	Q<0.9
2	HTG	B	604	7/19	0.73	0.48	41,50,54,63	0
2	HTG	A	601	19/19	0.77	0.26	62,82,94,98	0
3	PEG	B	605	7/7	0.77	0.24	38,46,58,59	0
4	GOL	B	606	6/6	0.77	0.31	63,70,74,76	0
3	PEG	A	603	7/7	0.79	0.16	46,54,59,59	0
2	HTG	B	602	12/19	0.85	0.13	46,58,61,72	0
2	HTG	A	602	19/19	0.86	0.18	41,49,57,63	0
2	HTG	B	603	19/19	0.87	0.20	47,55,71,76	0
2	HTG	B	601	19/19	0.87	0.20	41,49,57,63	0
4	GOL	B	607	6/6	0.95	0.18	51,56,59,62	0

The following is a graphical depiction of the model fit to experimental electron density of all instances of the Ligand of Interest. In addition, ligands with molecular weight > 250 and outliers as shown on the geometry validation Tables will also be included. Each fit is shown from different orientation to approximate a three-dimensional view.



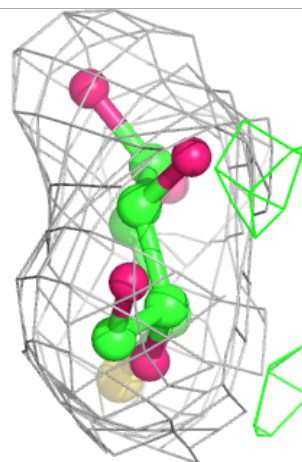
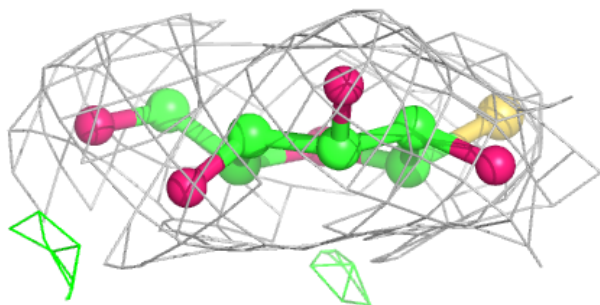
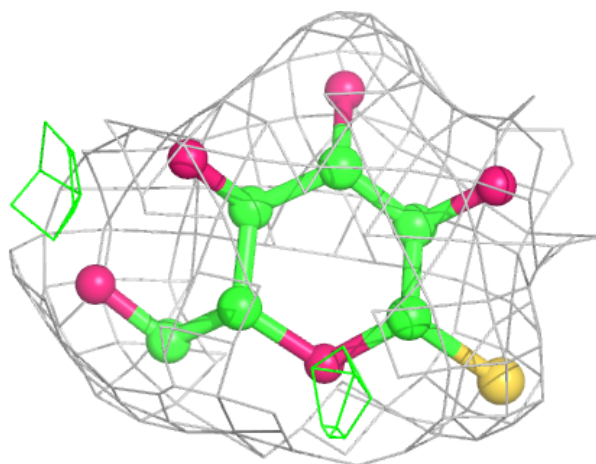
Electron density around HTG A 601:

$2mF_o - DF_c$ (at 0.7 rmsd) in gray
 $mF_o - DF_c$ (at 3 rmsd) in purple (negative)
and green (positive)



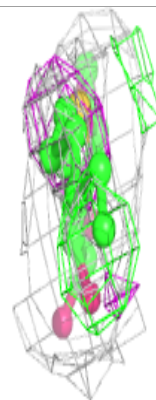
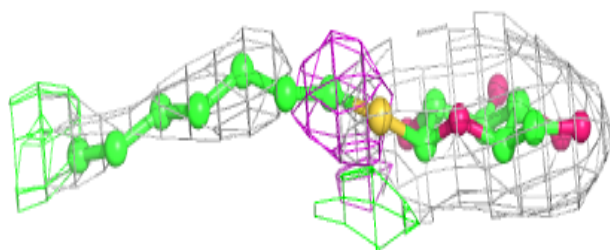
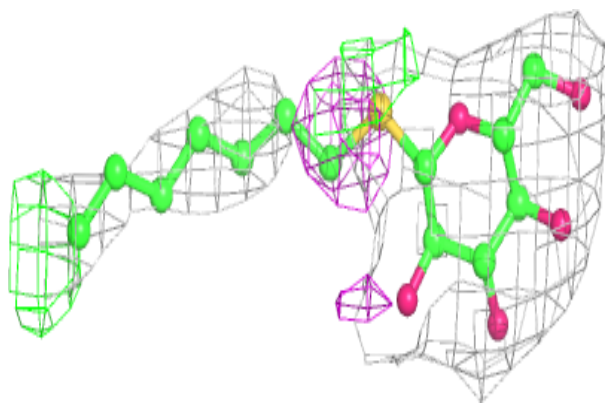
Electron density around HTG B 602:

$2mF_o-DF_c$ (at 0.7 rmsd) in gray
 mF_o-DF_c (at 3 rmsd) in purple (negative)
and green (positive)

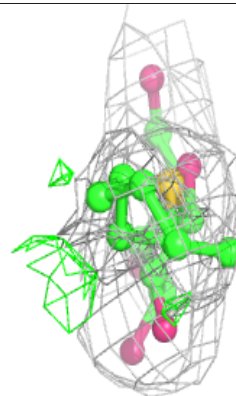
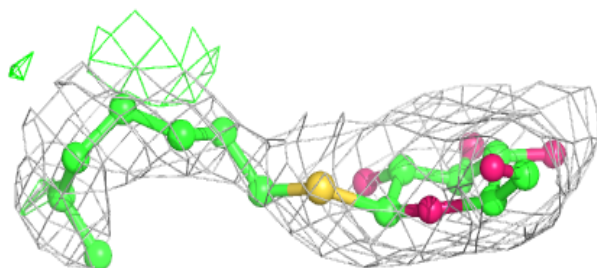
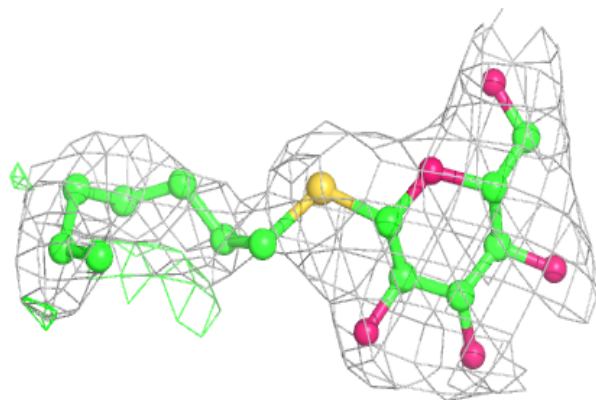


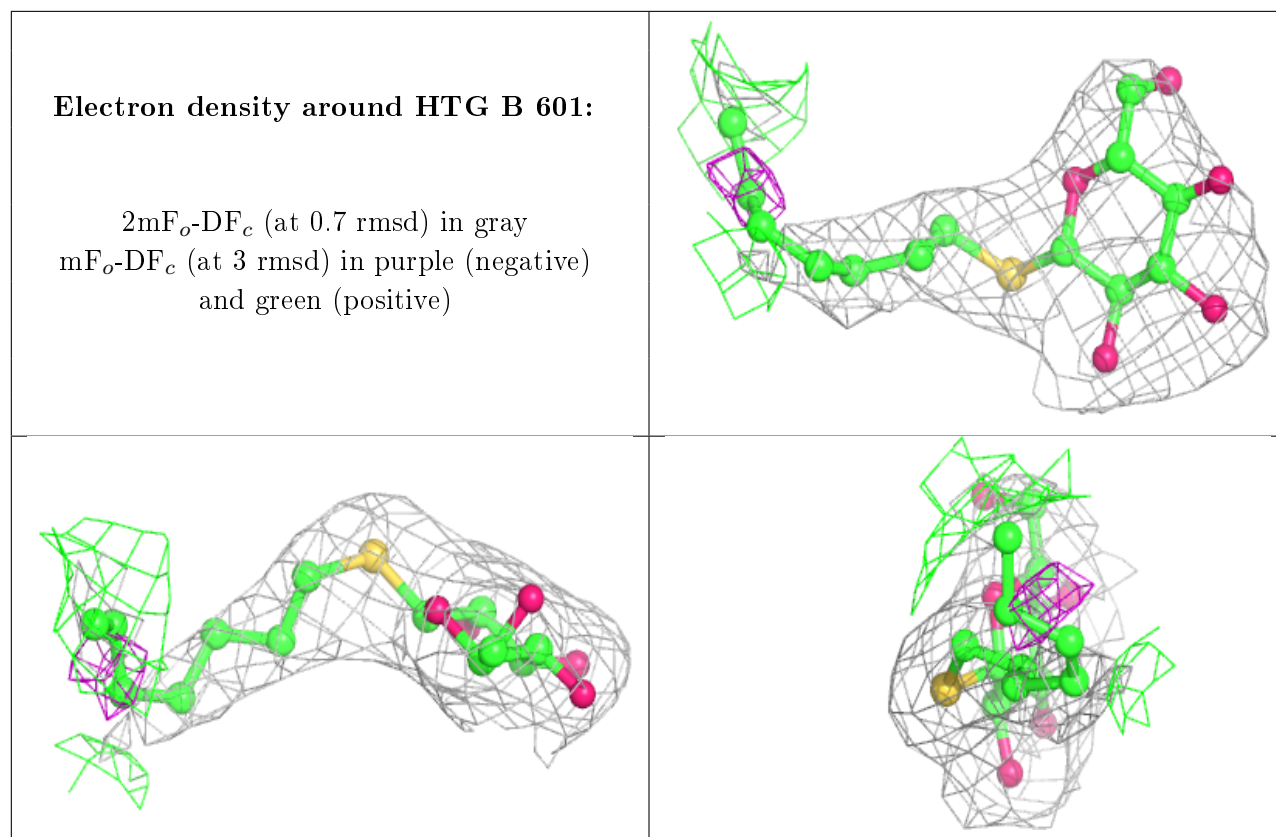
Electron density around HTG A 602:

$2mF_o-DF_c$ (at 0.7 rmsd) in gray
 mF_o-DF_c (at 3 rmsd) in purple (negative)
and green (positive)

**Electron density around HTG B 603:**

$2mF_o-DF_c$ (at 0.7 rmsd) in gray
 mF_o-DF_c (at 3 rmsd) in purple (negative)
and green (positive)





6.5 Other polymers [i](#)

There are no such residues in this entry.