



# Full wwPDB X-ray Structure Validation Report ⓘ

Nov 4, 2021 – 12:04 PM EDT

PDB ID : 6XNG  
Title : MHC-like protein complex structure  
Authors : Thirunavukkarasu, P.; Le Nours, J.; Rossjohn, J.  
Deposited on : 2020-07-02  
Resolution : 2.79 Å(reported)

This is a Full wwPDB X-ray Structure Validation Report for a publicly released PDB entry.

We welcome your comments at [validation@mail.wwpdb.org](mailto:validation@mail.wwpdb.org)

A user guide is available at

<https://www.wwpdb.org/validation/2017/XrayValidationReportHelp>

with specific help available everywhere you see the ⓘ symbol.

---

The following versions of software and data (see [references ⓘ](#)) were used in the production of this report:

MolProbity : 4.02b-467  
Mogul : 1.8.5 (274361), CSD as541be (2020)  
Xtriage (Phenix) : 1.13  
EDS : 2.23.2  
buster-report : 1.1.7 (2018)  
Percentile statistics : 20191225.v01 (using entries in the PDB archive December 25th 2019)  
Refmac : 5.8.0158  
CCP4 : 7.0.044 (Gargrove)  
Ideal geometry (proteins) : Engh & Huber (2001)  
Ideal geometry (DNA, RNA) : Parkinson et al. (1996)  
Validation Pipeline (wwPDB-VP) : 2.23.2

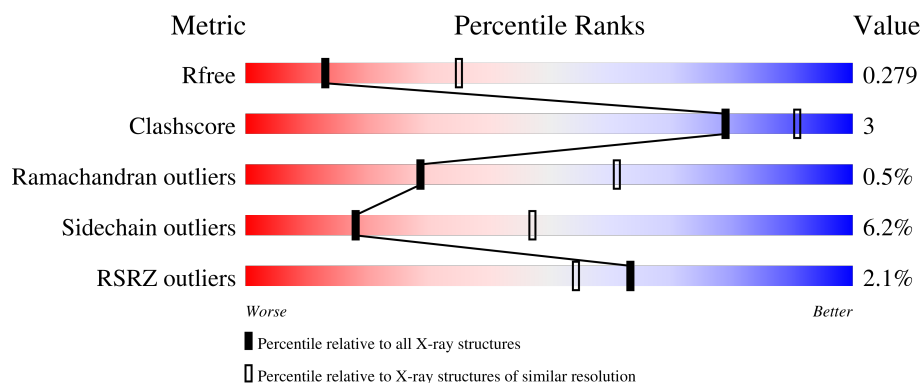
# 1 Overall quality at a glance

The following experimental techniques were used to determine the structure:

*X-RAY DIFFRACTION*

The reported resolution of this entry is 2.79 Å.

Percentile scores (ranging between 0-100) for global validation metrics of the entry are shown in the following graphic. The table shows the number of entries on which the scores are based.





Metric	Whole archive (#Entries)	Similar resolution (#Entries, resolution range(Å))
$R_{free}$	130704	3140 (2.80-2.80)
Clashscore	141614	3569 (2.80-2.80)
Ramachandran outliers	138981	3498 (2.80-2.80)
Sidechain outliers	138945	3500 (2.80-2.80)
RSRZ outliers	127900	3078 (2.80-2.80)

The table below summarises the geometric issues observed across the polymeric chains and their fit to the electron density. The red, orange, yellow and green segments of the lower bar indicate the fraction of residues that contain outliers for  $\geq 3$ , 2, 1 and 0 types of geometric quality criteria respectively. A grey segment represents the fraction of residues that are not modelled. The numeric value for each fraction is indicated below the corresponding segment, with a dot representing fractions  $\leq 5\%$ . The upper red bar (where present) indicates the fraction of residues that have poor fit to the electron density. The numeric value is given above the bar.

Mol	Chain	Length	Quality of chain
1	A	302	<div> <div>2%</div> <div> <div></div> <div>83%</div> <div>12%</div> <div></div> </div> <div>...</div> </div>
2	B	99	<div> <div>3%</div> <div> <div></div> <div>86%</div> <div>13%</div> <div></div> </div> <div>.</div> </div>
3	C	207	<div> <div>%</div> <div> <div></div> <div>87%</div> <div>11%</div> <div></div> </div> <div>.</div> </div>
4	D	242	<div> <div>2%</div> <div> <div></div> <div>90%</div> <div>8%</div> <div></div> </div> <div>.</div> </div>
5	E	2	<div> <div></div> <div> <div>50%</div> <div>50%</div> </div> </div>

*Continued on next page...*

*Continued from previous page...*

Mol	Chain	Length	Quality of chain
5	F	2	 50%50%
6	G	3	 67%33%

## 2 Entry composition

There are 8 unique types of molecules in this entry. The entry contains 6843 atoms, of which 0 are hydrogens and 0 are deuteriums.

In the tables below, the ZeroOcc column contains the number of atoms modelled with zero occupancy, the AltConf column contains the number of residues with at least one atom in alternate conformation and the Trace column contains the number of residues modelled with at most 2 atoms.

- Molecule 1 is a protein called Antigen-presenting glycoprotein CD1d1.

Mol	Chain	Residues	Atoms					ZeroOcc	AltConf	Trace
1	A	294	Total	C	N	O	S	0	0	0
			2333	1485	409	425	14			

There are 24 discrepancies between the modelled and reference sequences:

Chain	Residue	Modelled	Actual	Comment	Reference
A	201	HIS	ASP	conflict	UNP P11609
A	280	GLY	-	expression tag	UNP P11609
A	281	SER	-	expression tag	UNP P11609
A	282	LEU	-	expression tag	UNP P11609
A	283	HIS	-	expression tag	UNP P11609
A	284	HIS	-	expression tag	UNP P11609
A	285	ILE	-	expression tag	UNP P11609
A	286	LEU	-	expression tag	UNP P11609
A	287	ASP	-	expression tag	UNP P11609
A	288	ALA	-	expression tag	UNP P11609
A	289	GLN	-	expression tag	UNP P11609
A	290	LYS	-	expression tag	UNP P11609
A	291	MET	-	expression tag	UNP P11609
A	292	VAL	-	expression tag	UNP P11609
A	293	TRP	-	expression tag	UNP P11609
A	294	ASN	-	expression tag	UNP P11609
A	295	HIS	-	expression tag	UNP P11609
A	296	ARG	-	expression tag	UNP P11609
A	297	HIS	-	expression tag	UNP P11609
A	298	HIS	-	expression tag	UNP P11609
A	299	HIS	-	expression tag	UNP P11609
A	300	HIS	-	expression tag	UNP P11609
A	301	HIS	-	expression tag	UNP P11609
A	302	HIS	-	expression tag	UNP P11609

- Molecule 2 is a protein called Beta-2-microglobulin.

Mol	Chain	Residues	Atoms					ZeroOcc	AltConf	Trace
2	B	99	Total	C	N	O	S	0	0	0
			782	498	132	145	7			

- Molecule 3 is a protein called NKT Valpha14 (Mouse)-2C12 TCR.

Mol	Chain	Residues	Atoms					ZeroOcc	AltConf	Trace
3	C	204	Total	C	N	O	S	0	0	0
			1554	962	263	322	7			

- Molecule 4 is a protein called NKT Vbeta8.2 (Mouse)-2C12 TCR.

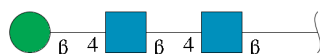
Mol	Chain	Residues	Atoms					ZeroOcc	AltConf	Trace
4	D	241	Total	C	N	O	S	0	0	0
			1874	1177	330	361	6			

- Molecule 5 is an oligosaccharide called 2-acetamido-2-deoxy-beta-D-glucopyranose-(1-4)-2-acetamido-2-deoxy-beta-D-glucopyranose.



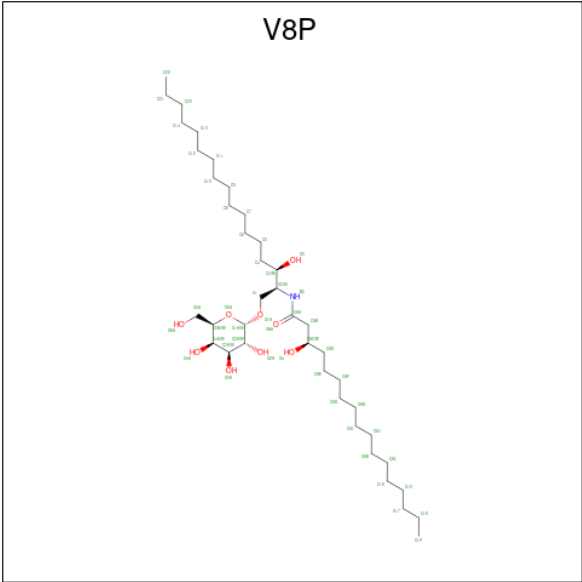
Mol	Chain	Residues	Atoms				ZeroOcc	AltConf	Trace
5	E	2	Total	C	N	O	0	0	0
			28	16	2	10			
5	F	2	Total	C	N	O	0	0	0
			28	16	2	10			

- Molecule 6 is an oligosaccharide called beta-D-mannopyranose-(1-4)-2-acetamido-2-deoxy-beta-D-glucopyranose-(1-4)-2-acetamido-2-deoxy-beta-D-glucopyranose.



Mol	Chain	Residues	Atoms				ZeroOcc	AltConf	Trace
6	G	3	Total	C	N	O	0	0	0
			39	22	2	15			

- Molecule 7 is (3R)-N-[(2S,3R)-1-(alpha-D-galactopyranosyloxy)-3-hydroxyheptadecan-2-yl]-3-hydroxyheptadecanamide (three-letter code: V8P) (formula: C<sub>40</sub>H<sub>79</sub>NO<sub>9</sub>) (labeled as "Ligand of Interest" by depositor).



Mol	Chain	Residues	Atoms			ZeroOcc	AltConf
7	A	1	Total	C		0	0
			10	10			
7	A	1	Total	C	N O	0	0
			50	40	1 9		

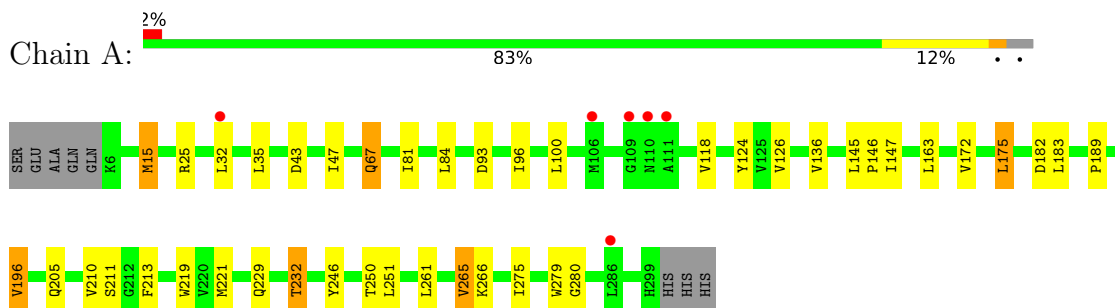
- Molecule 8 is water.

Mol	Chain	Residues	Atoms		ZeroOcc	AltConf
8	A	50	Total	O	0	0
			50	50		
8	B	18	Total	O	0	0
			18	18		
8	C	42	Total	O	0	0
			42	42		
8	D	35	Total	O	0	0
			35	35		

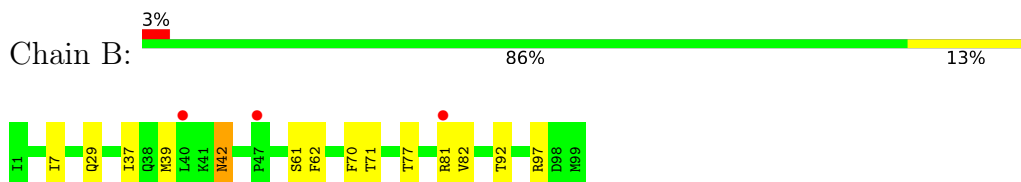
### 3 Residue-property plots [i](#)

These plots are drawn for all protein, RNA, DNA and oligosaccharide chains in the entry. The first graphic for a chain summarises the proportions of the various outlier classes displayed in the second graphic. The second graphic shows the sequence view annotated by issues in geometry and electron density. Residues are color-coded according to the number of geometric quality criteria for which they contain at least one outlier: green = 0, yellow = 1, orange = 2 and red = 3 or more. A red dot above a residue indicates a poor fit to the electron density ( $RSRZ > 2$ ). Stretches of 2 or more consecutive residues without any outlier are shown as a green connector. Residues present in the sample, but not in the model, are shown in grey.

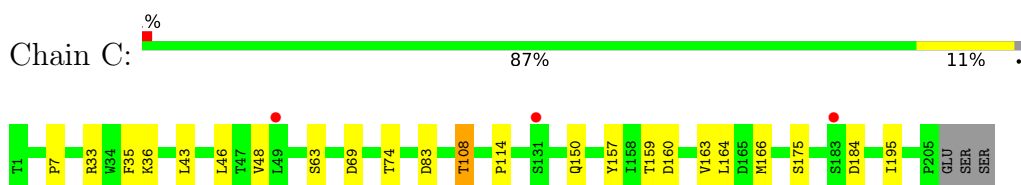
- Molecule 1: Antigen-presenting glycoprotein CD1d1



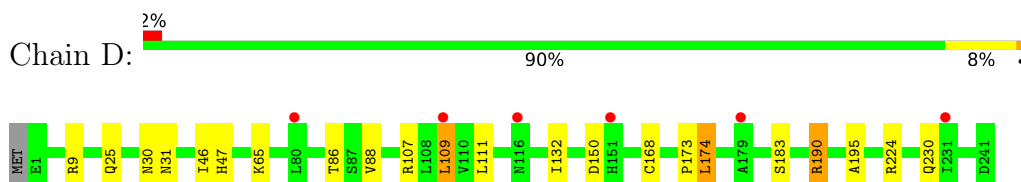
- Molecule 2: Beta-2-microglobulin



- Molecule 3: NKT Valpha14 (Mouse)-2C12 TCR



- Molecule 4: NKT Vbeta8.2 (Mouse)-2C12 TCR



- Molecule 5: 2-acetamido-2-deoxy-beta-D-glucopyranose-(1-4)-2-acetamido-2-deoxy-beta-D-glucopyranose





- Molecule 5: 2-acetamido-2-deoxy-beta-D-glucopyranose-(1-4)-2-acetamido-2-deoxy-beta-D-glucopyranose

Chain F:



- Molecule 6: beta-D-mannopyranose-(1-4)-2-acetamido-2-deoxy-beta-D-glucopyranose-(1-4)-2-acetamido-2-deoxy-beta-D-glucopyranose

Chain G:





## 4 Data and refinement statistics

Property	Value	Source
Space group	P 21 21 21	Depositor
Cell constants a, b, c, $\alpha$ , $\beta$ , $\gamma$	58.34Å 80.66Å 242.80Å 90.00° 90.00° 90.00°	Depositor
Resolution (Å)	47.33 – 2.79 48.50 – 2.79	Depositor EDS
% Data completeness (in resolution range)	99.1 (47.33-2.79) 99.1 (48.50-2.79)	Depositor EDS
$R_{merge}$	(Not available)	Depositor
$R_{sym}$	(Not available)	Depositor
$\langle I/\sigma(I) \rangle$ <sup>1</sup>	2.02 (at 2.81Å)	Xtriage
Refinement program	BUSTER 2.10.3	Depositor
R, $R_{free}$	0.203 , 0.277 0.208 , 0.279	Depositor DCC
$R_{free}$ test set	1440 reflections (4.96%)	wwPDB-VP
Wilson B-factor (Å <sup>2</sup> )	65.2	Xtriage
Anisotropy	0.675	Xtriage
Bulk solvent $k_{sol}$ (e/Å <sup>3</sup> ), $B_{sol}$ (Å <sup>2</sup> )	0.32 , 51.5	EDS
L-test for twinning <sup>2</sup>	$\langle  L  \rangle = 0.49$ , $\langle L^2 \rangle = 0.33$	Xtriage
Estimated twinning fraction	No twinning to report.	Xtriage
$F_o, F_c$ correlation	0.94	EDS
Total number of atoms	6843	wwPDB-VP
Average B, all atoms (Å <sup>2</sup> )	73.0	wwPDB-VP

Xtriage's analysis on translational NCS is as follows: *The largest off-origin peak in the Patterson function is 3.74% of the height of the origin peak. No significant pseudotranslation is detected.*

<sup>1</sup>Intensities estimated from amplitudes.

<sup>2</sup>Theoretical values of  $\langle |L| \rangle$ ,  $\langle L^2 \rangle$  for acentric reflections are 0.5, 0.333 respectively for untwinned datasets, and 0.375, 0.2 for perfectly twinned datasets.

## 5 Model quality [i](#)

### 5.1 Standard geometry [i](#)

Bond lengths and bond angles in the following residue types are not validated in this section: NAG, V8P, BMA

The Z score for a bond length (or angle) is the number of standard deviations the observed value is removed from the expected value. A bond length (or angle) with  $|Z| > 5$  is considered an outlier worth inspection. RMSZ is the root-mean-square of all Z scores of the bond lengths (or angles).

Mol	Chain	Bond lengths		Bond angles	
		RMSZ	$\# Z  > 5$	RMSZ	$\# Z  > 5$
1	A	0.41	0/2406	0.62	0/3279
2	B	0.41	0/808	0.62	0/1106
3	C	0.42	0/1583	0.65	0/2158
4	D	0.41	0/1926	0.63	0/2630
All	All	0.42	0/6723	0.63	0/9173

There are no bond length outliers.

There are no bond angle outliers.

There are no chirality outliers.

There are no planarity outliers.

### 5.2 Too-close contacts [i](#)

In the following table, the Non-H and H(model) columns list the number of non-hydrogen atoms and hydrogen atoms in the chain respectively. The H(added) column lists the number of hydrogen atoms added and optimized by MolProbity. The Clashes column lists the number of clashes within the asymmetric unit, whereas Symm-Clashes lists symmetry-related clashes.

Mol	Chain	Non-H	H(model)	H(added)	Clashes	Symm-Clashes
1	A	2333	0	2183	19	0
2	B	782	0	714	6	0
3	C	1554	0	1466	8	0
4	D	1874	0	1747	7	0
5	E	28	0	25	0	0
5	F	28	0	25	1	0
6	G	39	0	34	0	0
7	A	60	0	0	0	0
8	A	50	0	0	1	0

*Continued on next page...*

*Continued from previous page...*

Mol	Chain	Non-H	H(model)	H(added)	Clashes	Symm-Clashes
8	B	18	0	0	0	0
8	C	42	0	0	0	0
8	D	35	0	0	0	0
All	All	6843	0	6194	36	0

The all-atom clashscore is defined as the number of clashes found per 1000 atoms (including hydrogen atoms). The all-atom clashscore for this structure is 3.

All (36) close contacts within the same asymmetric unit are listed below, sorted by their clash magnitude.

Atom-1	Atom-2	Interatomic distance (Å)	Clash overlap (Å)
1:A:229:GLN:O	1:A:232:THR:HG22	1.55	1.05
3:C:114:PRO:HG3	3:C:163:VAL:HG21	1.60	0.82
3:C:164:LEU:HB3	4:D:168:CYS:HB2	1.77	0.67
3:C:175:SER:OG	4:D:190:ARG:HD2	1.96	0.65
1:A:219:TRP:HB3	1:A:266:LYS:HB2	1.78	0.64
1:A:211:SER:HB2	1:A:246:TYR:HD1	1.63	0.62
3:C:7:PRO:O	3:C:108:THR:HB	1.98	0.62
1:A:189:PRO:HB3	1:A:213:PHE:HB3	1.83	0.60
1:A:15:MET:HG2	2:B:62:PHE:HE1	1.69	0.58
1:A:100:LEU:HG	1:A:118:VAL:HG22	1.86	0.57
1:A:124:TYR:CZ	1:A:136:VAL:HG11	2.41	0.56
1:A:196:VAL:HG12	1:A:205:GLN:HB3	1.89	0.54
4:D:86:THR:HG23	4:D:109:LEU:HA	1.90	0.52
1:A:221:MET:HE1	8:A:547:HOH:O	2.10	0.51
3:C:33:ARG:HG3	3:C:48:VAL:HG22	1.92	0.50
1:A:172:VAL:HA	1:A:175:LEU:HB2	1.93	0.50
1:A:265:VAL:HG13	1:A:275:ILE:HB	1.93	0.50
2:B:81:ARG:HD3	2:B:92:THR:HB	1.95	0.48
3:C:36:LYS:HB2	3:C:46:LEU:HD11	1.96	0.48
2:B:37:ILE:HG12	2:B:82:VAL:HG22	1.96	0.48
4:D:46:ILE:HG22	4:D:47:HIS:CD2	2.49	0.48
1:A:126:VAL:HG21	1:A:147:ILE:HD11	1.97	0.47
2:B:42:ASN:HA	2:B:77:THR:HB	1.96	0.47
2:B:29:GLN:HA	2:B:61:SER:HB2	1.97	0.47
2:B:7:ILE:HG12	2:B:82:VAL:HG21	1.96	0.46
1:A:15:MET:HE2	1:A:15:MET:HB2	1.92	0.45
1:A:32:LEU:HD22	1:A:175:LEU:HD13	1.99	0.44
1:A:145:LEU:HB3	1:A:146:PRO:HD3	2.00	0.44
3:C:157:TYR:HB3	4:D:174:LEU:HD11	2.01	0.43
1:A:47:ILE:HD12	1:A:67:GLN:HG2	2.01	0.42

*Continued on next page...*

*Continued from previous page...*

Atom-1	Atom-2	Interatomic distance (Å)	Clash overlap (Å)
4:D:150:ASP:HB2	4:D:173:PRO:HG2	2.01	0.42
1:A:84:LEU:HD22	1:A:146:PRO:HB3	2.01	0.41
1:A:35:LEU:HD12	1:A:183:LEU:HD23	2.03	0.41
3:C:35:PHE:CD1	3:C:43:LEU:HB3	2.57	0.40
1:A:25:ARG:HB3	5:F:1:NAG:H82	2.03	0.40
4:D:132:ILE:HG23	4:D:195:ALA:HB1	2.02	0.40

There are no symmetry-related clashes.

## 5.3 Torsion angles [i](#)

### 5.3.1 Protein backbone [i](#)

In the following table, the Percentiles column shows the percent Ramachandran outliers of the chain as a percentile score with respect to all X-ray entries followed by that with respect to entries of similar resolution.

The Analysed column shows the number of residues for which the backbone conformation was analysed, and the total number of residues.

Mol	Chain	Analysed	Favoured	Allowed	Outliers	Percentiles	
1	A	292/302 (97%)	283 (97%)	7 (2%)	2 (1%)	22	53
2	B	97/99 (98%)	92 (95%)	4 (4%)	1 (1%)	15	44
3	C	202/207 (98%)	195 (96%)	7 (4%)	0	100	100
4	D	239/242 (99%)	231 (97%)	7 (3%)	1 (0%)	34	66
All	All	830/850 (98%)	801 (96%)	25 (3%)	4 (0%)	29	61

All (4) Ramachandran outliers are listed below:

Mol	Chain	Res	Type
1	A	279	TRP
2	B	42	ASN
4	D	183	SER
1	A	280	GLY

### 5.3.2 Protein sidechains [i](#)

In the following table, the Percentiles column shows the percent sidechain outliers of the chain as a percentile score with respect to all X-ray entries followed by that with respect to entries of similar

resolution.

The Analysed column shows the number of residues for which the sidechain conformation was analysed, and the total number of residues.

Mol	Chain	Analysed	Rotameric	Outliers	Percentiles	
1	A	247/264 (94%)	231 (94%)	16 (6%)	17	44
2	B	84/93 (90%)	80 (95%)	4 (5%)	25	58
3	C	178/186 (96%)	167 (94%)	11 (6%)	18	47
4	D	198/207 (96%)	185 (93%)	13 (7%)	16	44
All	All	707/750 (94%)	663 (94%)	44 (6%)	18	47

All (44) residues with a non-rotameric sidechain are listed below:

Mol	Chain	Res	Type
1	A	15	MET
1	A	43	ASP
1	A	67	GLN
1	A	81	ILE
1	A	93	ASP
1	A	96	ILE
1	A	163	LEU
1	A	175	LEU
1	A	182	ASP
1	A	196	VAL
1	A	210	VAL
1	A	232	THR
1	A	250	THR
1	A	251	LEU
1	A	261	LEU
1	A	265	VAL
2	B	39	MET
2	B	70	PHE
2	B	71	THR
2	B	97	ARG
3	C	63	SER
3	C	69	ASP
3	C	74	THR
3	C	83	ASP
3	C	108	THR
3	C	150	GLN
3	C	159	THR
3	C	160	ASP

*Continued on next page...*

*Continued from previous page...*

Mol	Chain	Res	Type
3	C	166	MET
3	C	184	ASP
3	C	195	ILE
4	D	9	ARG
4	D	25	GLN
4	D	30	ASN
4	D	31	ASN
4	D	65	LYS
4	D	88	VAL
4	D	107	ARG
4	D	109	LEU
4	D	111	LEU
4	D	174	LEU
4	D	190	ARG
4	D	224	ARG
4	D	230	GLN

Sometimes sidechains can be flipped to improve hydrogen bonding and reduce clashes. All (2) such sidechains are listed below:

Mol	Chain	Res	Type
1	A	60	ASN
3	C	30	ASN

### 5.3.3 RNA [i](#)

There are no RNA molecules in this entry.

## 5.4 Non-standard residues in protein, DNA, RNA chains [i](#)

There are no non-standard protein/DNA/RNA residues in this entry.

## 5.5 Carbohydrates [i](#)

7 monosaccharides are modelled in this entry.

In the following table, the Counts columns list the number of bonds (or angles) for which Mogul statistics could be retrieved, the number of bonds (or angles) that are observed in the model and the number of bonds (or angles) that are defined in the Chemical Component Dictionary. The Link column lists molecule types, if any, to which the group is linked. The Z score for a bond length (or angle) is the number of standard deviations the observed value is removed from the

expected value. A bond length (or angle) with  $|Z| > 2$  is considered an outlier worth inspection. RMSZ is the root-mean-square of all Z scores of the bond lengths (or angles).

Mol	Type	Chain	Res	Link	Bond lengths			Bond angles		
					Counts	RMSZ	$\# Z  > 2$	Counts	RMSZ	$\# Z  > 2$
5	NAG	E	1	1,5	14,14,15	0.31	0	17,19,21	0.70	0
5	NAG	E	2	5	14,14,15	0.30	0	17,19,21	0.79	1 (5%)
5	NAG	F	1	1,5	14,14,15	0.30	0	17,19,21	0.86	1 (5%)
5	NAG	F	2	5	14,14,15	0.37	0	17,19,21	0.61	0
6	NAG	G	1	1,6	14,14,15	0.30	0	17,19,21	0.45	0
6	NAG	G	2	6	14,14,15	0.29	0	17,19,21	0.83	1 (5%)
6	BMA	G	3	6	11,11,12	0.33	0	15,15,17	0.57	0

In the following table, the Chirals column lists the number of chiral outliers, the number of chiral centers analysed, the number of these observed in the model and the number defined in the Chemical Component Dictionary. Similar counts are reported in the Torsion and Rings columns. '-' means no outliers of that kind were identified.

Mol	Type	Chain	Res	Link	Chirals	Torsions	Rings
5	NAG	E	1	1,5	-	2/6/23/26	0/1/1/1
5	NAG	E	2	5	-	0/6/23/26	0/1/1/1
5	NAG	F	1	1,5	-	0/6/23/26	0/1/1/1
5	NAG	F	2	5	-	1/6/23/26	0/1/1/1
6	NAG	G	1	1,6	-	0/6/23/26	0/1/1/1
6	NAG	G	2	6	-	0/6/23/26	0/1/1/1
6	BMA	G	3	6	-	0/2/19/22	0/1/1/1

There are no bond length outliers.

All (3) bond angle outliers are listed below:

Mol	Chain	Res	Type	Atoms	Z	Observed(°)	Ideal(°)
5	F	1	NAG	C1-O5-C5	2.78	115.96	112.19
6	G	2	NAG	O5-C1-C2	-2.61	107.17	111.29
5	E	2	NAG	C1-O5-C5	2.15	115.10	112.19

There are no chirality outliers.

All (3) torsion outliers are listed below:

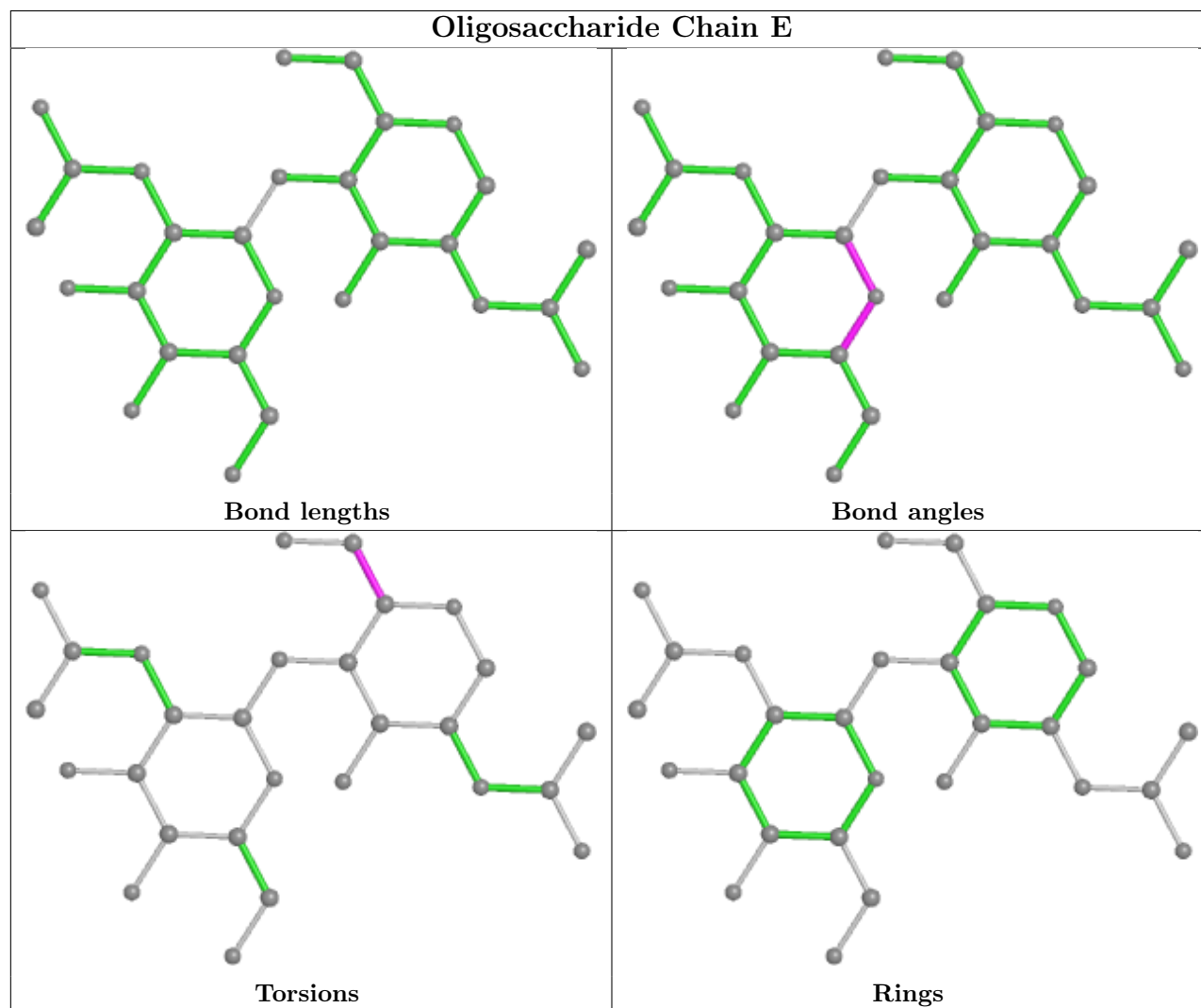
Mol	Chain	Res	Type	Atoms
5	F	2	NAG	O5-C5-C6-O6
5	E	1	NAG	C4-C5-C6-O6
5	E	1	NAG	O5-C5-C6-O6

There are no ring outliers.

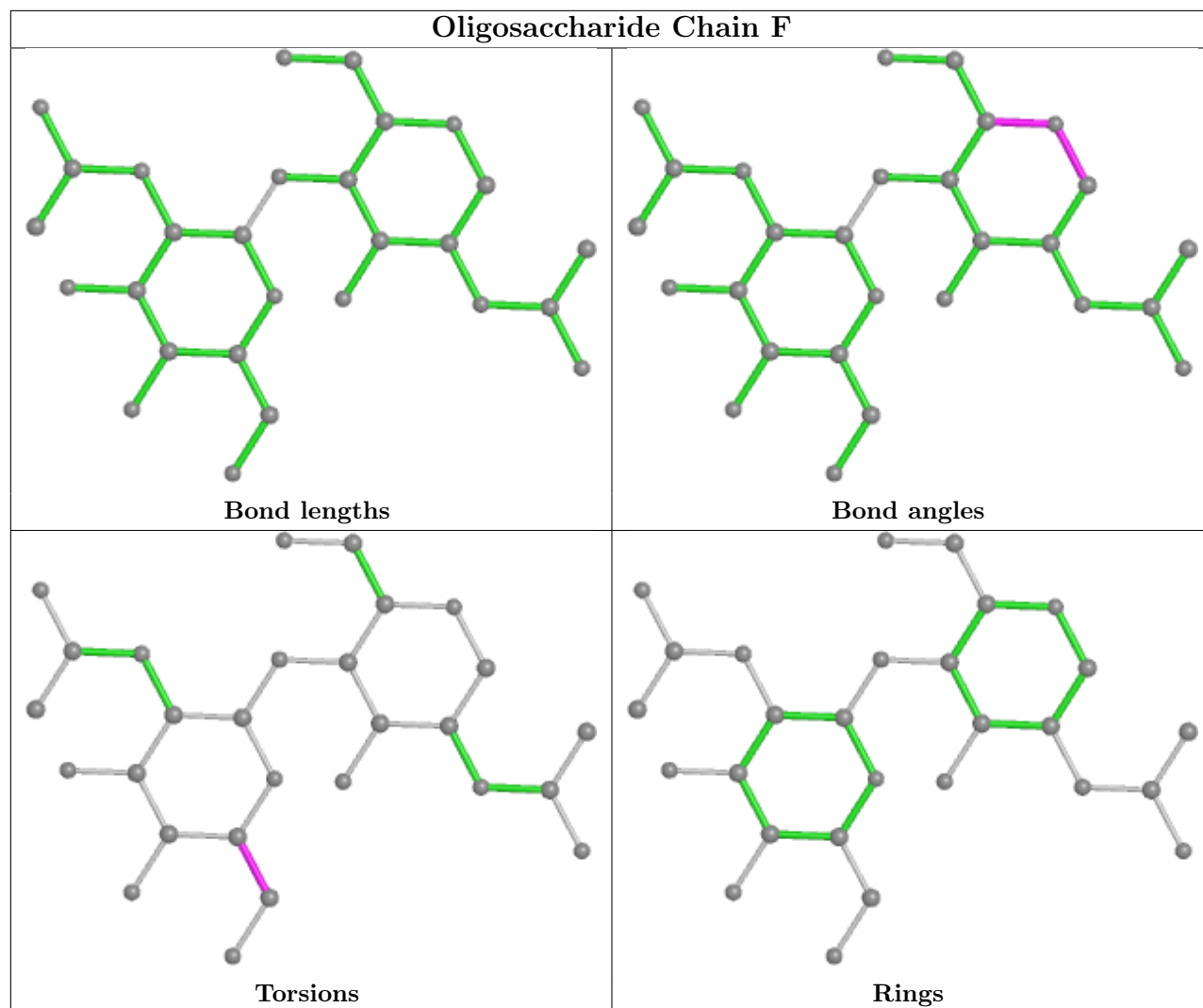
1 monomer is involved in 1 short contact:

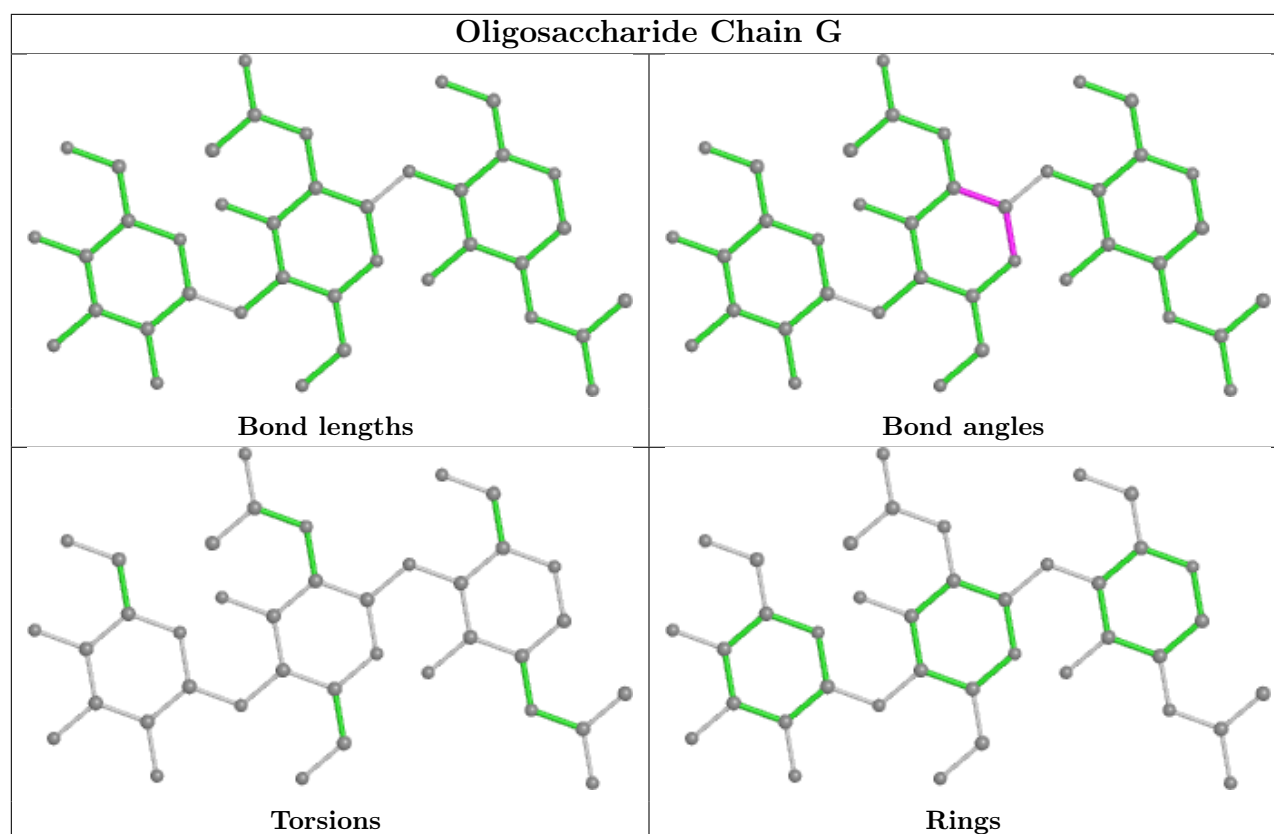
Mol	Chain	Res	Type	Clashes	Symm-Clashes
5	F	1	NAG	1	0

The following is a two-dimensional graphical depiction of Mogul quality analysis of bond lengths, bond angles, torsion angles, and ring geometry for oligosaccharide.









## 5.6 Ligand geometry [i](#)

2 ligands are modelled in this entry.

In the following table, the Counts columns list the number of bonds (or angles) for which Mogul statistics could be retrieved, the number of bonds (or angles) that are observed in the model and the number of bonds (or angles) that are defined in the Chemical Component Dictionary. The Link column lists molecule types, if any, to which the group is linked. The Z score for a bond length (or angle) is the number of standard deviations the observed value is removed from the expected value. A bond length (or angle) with  $|Z| > 2$  is considered an outlier worth inspection. RMSZ is the root-mean-square of all Z scores of the bond lengths (or angles).

Mol	Type	Chain	Res	Link	Bond lengths			Bond angles		
					Counts	RMSZ	$\# Z  > 2$	Counts	RMSZ	$\# Z  > 2$
7	V8P	A	402	-	50,50,50	0.71	0	55,59,59	0.84	1 (1%)
7	V8P	A	401	-	9,9,50	0.47	0	8,8,59	0.65	0

In the following table, the Chirals column lists the number of chiral outliers, the number of chiral centers analysed, the number of these observed in the model and the number defined in the Chemical Component Dictionary. Similar counts are reported in the Torsion and Rings columns. '-' means no outliers of that kind were identified.

Mol	Type	Chain	Res	Link	Chirals	Torsions	Rings
7	V8P	A	402	-	-	22/47/67/67	0/1/1/1
7	V8P	A	401	-	-	4/7/7/67	-

There are no bond length outliers.

All (1) bond angle outliers are listed below:

Mol	Chain	Res	Type	Atoms	Z	Observed(°)	Ideal(°)
7	A	402	V8P	CAB-CAA-N2	-2.12	113.55	116.33

There are no chirality outliers.

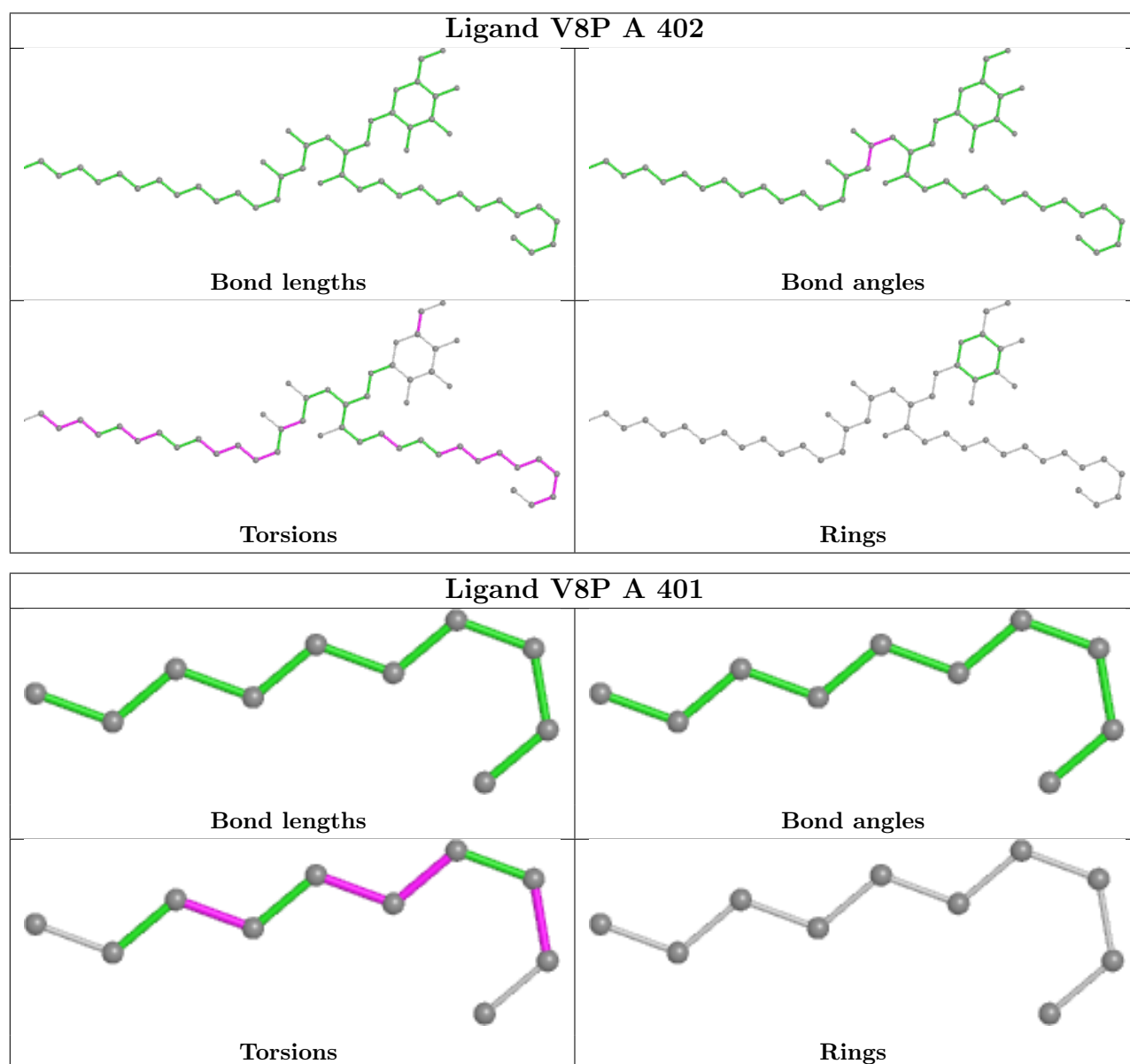
All (26) torsion outliers are listed below:

Mol	Chain	Res	Type	Atoms
7	A	402	V8P	O5A-C5M-C6A-O6A
7	A	402	V8P	C13-C14-C20-C21
7	A	402	V8P	C16-C15-C17-C18
7	A	401	V8P	C11-C10-C9-C8
7	A	402	V8P	CAE-CAF-CAG-CAH
7	A	402	V8P	CAF-CAG-CAH-CAI
7	A	402	V8P	C17-C15-C16-CAL
7	A	401	V8P	C11-C12-C13-C14
7	A	402	V8P	C7-C8-C9-C10
7	A	402	V8P	C11-C12-C13-C14
7	A	402	V8P	C11-C10-C9-C8
7	A	401	V8P	C10-C11-C12-C13
7	A	402	V8P	CAD-CAE-CAF-CAG
7	A	402	V8P	C9-C10-C11-C12
7	A	402	V8P	C15-C17-C18-C19
7	A	402	V8P	C14-C20-C21-C22
7	A	402	V8P	CAI-CAJ-CAK-CAL
7	A	402	V8P	C4A-C5M-C6A-O6A
7	A	401	V8P	C13-C14-C20-C21
7	A	402	V8P	C4-C5-C6-C7
7	A	402	V8P	CAJ-CAK-CAL-C16
7	A	402	V8P	C10-C11-C12-C13
7	A	402	V8P	CAA-CAB-CAC-O4
7	A	402	V8P	C12-C13-C14-C20
7	A	402	V8P	CAA-CAB-CAC-CAD
7	A	402	V8P	CAC-CAD-CAE-CAF

There are no ring outliers.

No monomer is involved in short contacts.

The following is a two-dimensional graphical depiction of Mogul quality analysis of bond lengths, bond angles, torsion angles, and ring geometry for all instances of the Ligand of Interest. In addition, ligands with molecular weight > 250 and outliers as shown on the validation Tables will also be included. For torsion angles, if less than 5% of the Mogul distribution of torsion angles is within 10 degrees of the torsion angle in question, then that torsion angle is considered an outlier. Any bond that is central to one or more torsion angles identified as an outlier by Mogul will be highlighted in the graph. For rings, the root-mean-square deviation (RMSD) between the ring in question and similar rings identified by Mogul is calculated over all ring torsion angles. If the average RMSD is greater than 60 degrees and the minimal RMSD between the ring in question and any Mogul-identified rings is also greater than 60 degrees, then that ring is considered an outlier. The outliers are highlighted in purple. The color gray indicates Mogul did not find sufficient equivalents in the CSD to analyse the geometry.



## 5.7 Other polymers

There are no such residues in this entry.

## 5.8 Polymer linkage issues

There are no chain breaks in this entry.

## 6 Fit of model and data

### 6.1 Protein, DNA and RNA chains

In the following table, the column labelled ‘#RSRZ > 2’ contains the number (and percentage) of RSRZ outliers, followed by percent RSRZ outliers for the chain as percentile scores relative to all X-ray entries and entries of similar resolution. The OWAB column contains the minimum, median, 95<sup>th</sup> percentile and maximum values of the occupancy-weighted average B-factor per residue. The column labelled ‘Q < 0.9’ lists the number of (and percentage) of residues with an average occupancy less than 0.9.

Mol	Chain	Analysed	<RSRZ>	#RSRZ>2	OWAB(Å <sup>2</sup> )	Q<0.9
1	A	294/302 (97%)	0.16	6 (2%) 65 56	46, 71, 97, 110	0
2	B	99/99 (100%)	0.23	3 (3%) 50 40	62, 76, 92, 96	0
3	C	204/207 (98%)	0.12	3 (1%) 73 68	41, 65, 90, 117	0
4	D	241/242 (99%)	0.18	6 (2%) 57 47	49, 72, 104, 128	0
All	All	838/850 (98%)	0.16	18 (2%) 63 54	41, 71, 97, 128	0

All (18) RSRZ outliers are listed below:

Mol	Chain	Res	Type	RSRZ
2	B	47	PRO	4.0
1	A	286	LEU	3.5
1	A	106	MET	3.3
1	A	109	GLY	2.9
3	C	183	SER	2.7
1	A	32	LEU	2.5
3	C	49	LEU	2.5
1	A	110	ASN	2.5
4	D	116	ASN	2.4
1	A	111	ALA	2.4
4	D	109	LEU	2.3
4	D	231	ILE	2.3
4	D	179	ALA	2.3
3	C	131	SER	2.2
4	D	151	HIS	2.2
4	D	80	LEU	2.1
2	B	81	ARG	2.1
2	B	40	LEU	2.1

## 6.2 Non-standard residues in protein, DNA, RNA chains ⓘ

There are no non-standard protein/DNA/RNA residues in this entry.

## 6.3 Carbohydrates ⓘ

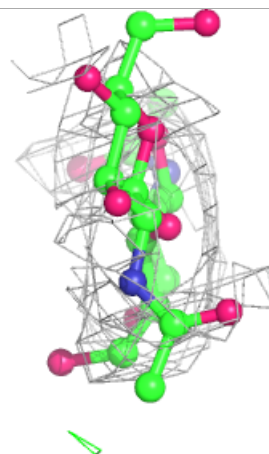
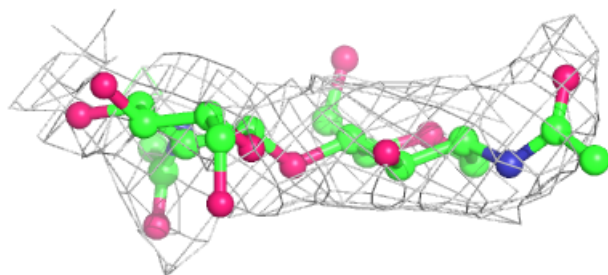
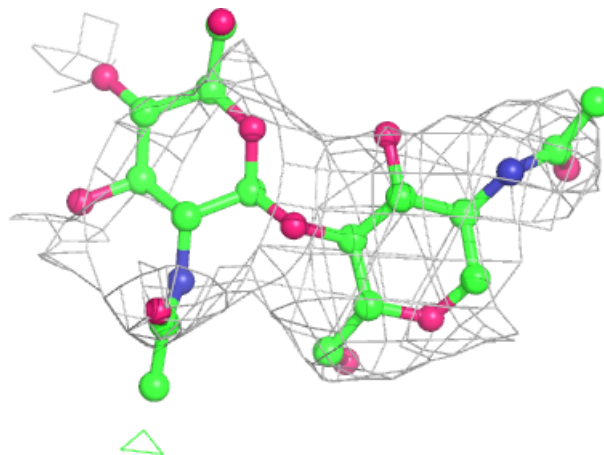
In the following table, the Atoms column lists the number of modelled atoms in the group and the number defined in the chemical component dictionary. The B-factors column lists the minimum, median, 95<sup>th</sup> percentile and maximum values of B factors of atoms in the group. The column labelled 'Q< 0.9' lists the number of atoms with occupancy less than 0.9.

Mol	Type	Chain	Res	Atoms	RSCC	RSR	B-factors(Å <sup>2</sup> )	Q<0.9
6	BMA	G	3	11/12	0.67	0.21	124,126,128,129	0
5	NAG	E	2	14/15	0.70	0.39	122,126,127,128	0
5	NAG	F	2	14/15	0.76	0.23	101,107,111,111	0
6	NAG	G	2	14/15	0.88	0.19	101,106,112,119	0
6	NAG	G	1	14/15	0.91	0.16	88,91,93,97	0
5	NAG	E	1	14/15	0.93	0.29	106,109,112,118	0
5	NAG	F	1	14/15	0.94	0.14	85,96,99,102	0

The following is a graphical depiction of the model fit to experimental electron density for oligosaccharide. Each fit is shown from different orientation to approximate a three-dimensional view.

**Electron density around Chain E:**

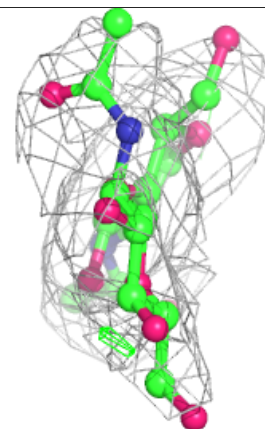
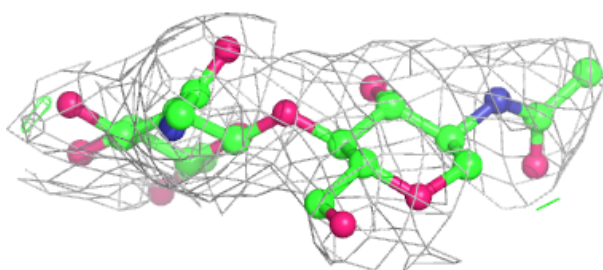
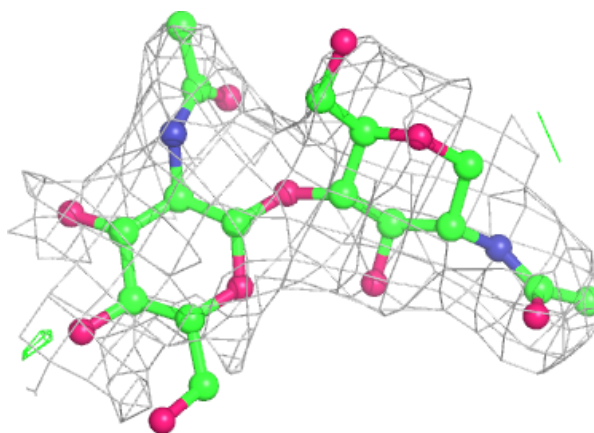
$2mF_o-DF_c$  (at 0.7 rmsd) in gray  
 $mF_o-DF_c$  (at 3 rmsd) in purple (negative)  
and green (positive)



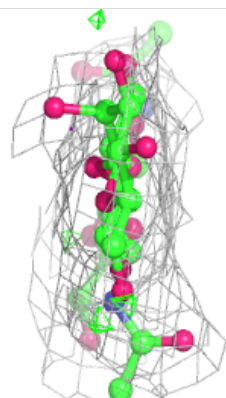
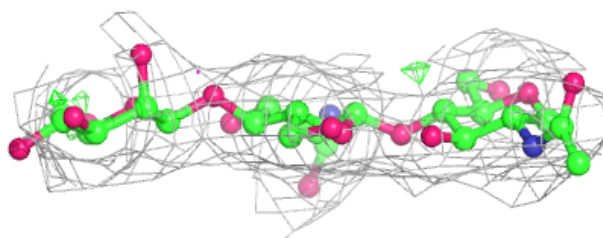
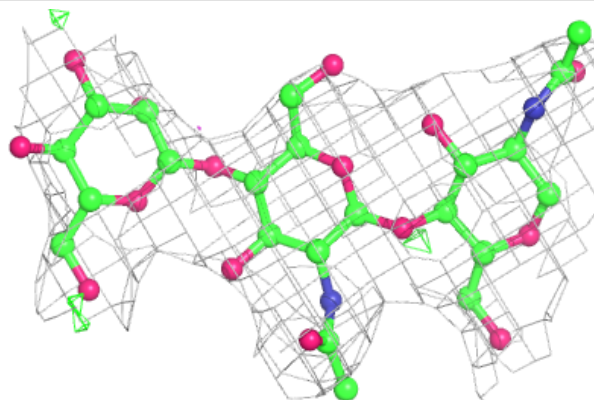


**Electron density around Chain F:**

$2mF_o - DF_c$  (at 0.7 rmsd) in gray  
 $mF_o - DF_c$  (at 3 rmsd) in purple (negative)  
and green (positive)

**Electron density around Chain G:**

$2mF_o - DF_c$  (at 0.7 rmsd) in gray  
 $mF_o - DF_c$  (at 3 rmsd) in purple (negative)  
and green (positive)

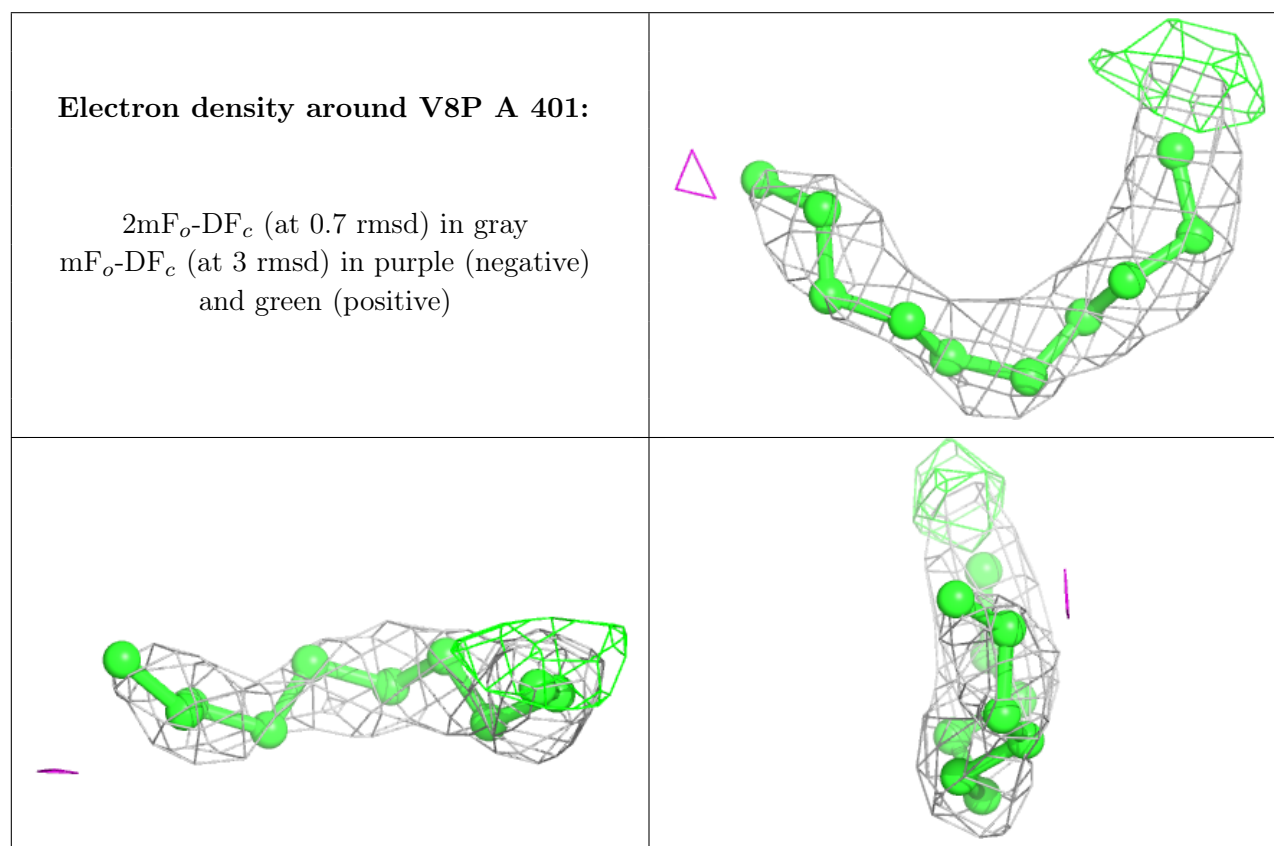


## 6.4 Ligands ⓘ

In the following table, the Atoms column lists the number of modelled atoms in the group and the number defined in the chemical component dictionary. The B-factors column lists the minimum, median, 95<sup>th</sup> percentile and maximum values of B factors of atoms in the group. The column labelled 'Q< 0.9' lists the number of atoms with occupancy less than 0.9.

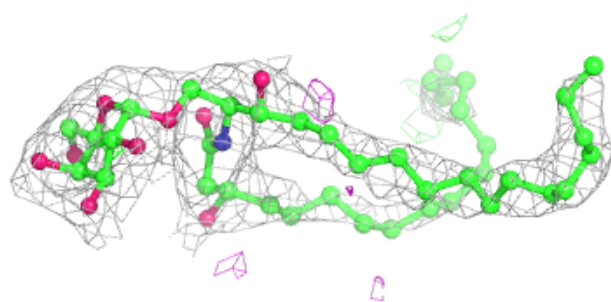
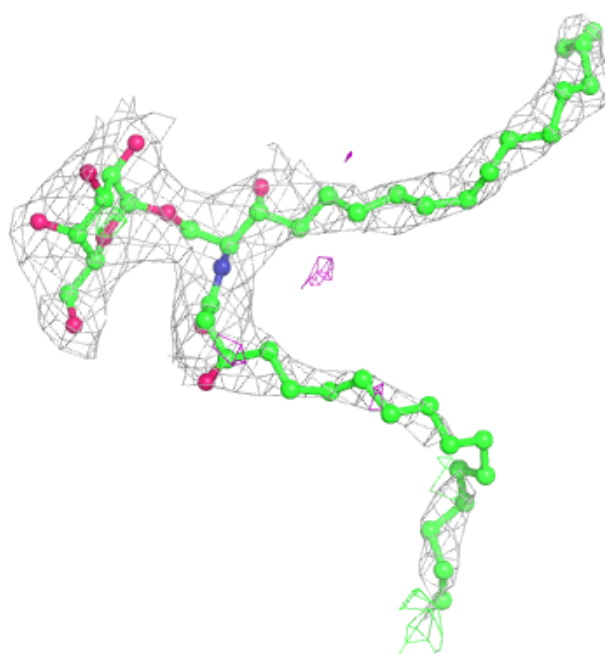
Mol	Type	Chain	Res	Atoms	RSCC	RSR	B-factors(Å <sup>2</sup> )	Q<0.9
7	V8P	A	401	10/50	0.84	0.46	43,56,59,60	0
7	V8P	A	402	50/50	0.95	0.29	54,64,84,85	0

The following is a graphical depiction of the model fit to experimental electron density of all instances of the Ligand of Interest. In addition, ligands with molecular weight > 250 and outliers as shown on the geometry validation Tables will also be included. Each fit is shown from different orientation to approximate a three-dimensional view.



**Electron density around V8P A 402:**

$2mF_o-DF_c$  (at 0.7 rmsd) in gray  
 $mF_o-DF_c$  (at 3 rmsd) in purple (negative)  
and green (positive)



## 6.5 Other polymers [i](#)

There are no such residues in this entry.