



Full wwPDB EM Validation Report ⓘ

Dec 7, 2022 – 05:00 PM JST

PDB ID : 7XNN
EMDB ID : EMD-33319
Title : human KCNQ1-CaM-ML277-PIP2 complex in state B
Authors : Ma, D.; Guo, J.
Deposited on : 2022-04-29
Resolution : 2.50 Å(reported)

This is a Full wwPDB EM Validation Report for a publicly released PDB entry.

We welcome your comments at validation@mail.wwpdb.org

A user guide is available at

<https://www.wwpdb.org/validation/2017/EMValidationReportHelp>

with specific help available everywhere you see the ⓘ symbol.

The types of validation reports are described at

<http://www.wwpdb.org/validation/2017/FAQs#types>.

The following versions of software and data (see [references ⓘ](#)) were used in the production of this report:

EMDB validation analysis : 0.0.1.dev43
Mogul : 1.8.5 (274361), CSD as541be (2020)
MolProbity : 4.02b-467
buster-report : 1.1.7 (2018)
Percentile statistics : 20191225.v01 (using entries in the PDB archive December 25th 2019)
MapQ : 1.9.9
Ideal geometry (proteins) : Engh & Huber (2001)
Ideal geometry (DNA, RNA) : Parkinson et al. (1996)
Validation Pipeline (wwPDB-VP) : 2.31.3

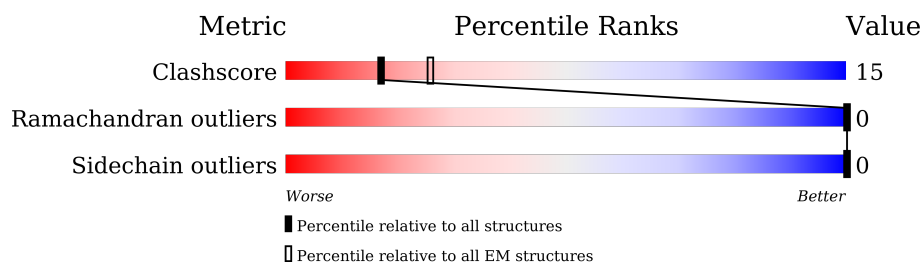
1 Overall quality at a glance

The following experimental techniques were used to determine the structure:

ELECTRON MICROSCOPY

The reported resolution of this entry is 2.50 Å.

Percentile scores (ranging between 0-100) for global validation metrics of the entry are shown in the following graphic. The table shows the number of entries on which the scores are based.



Metric	Whole archive (#Entries)	EM structures (#Entries)
Clashscore	158937	4297
Ramachandran outliers	154571	4023
Sidechain outliers	154315	3826

The table below summarises the geometric issues observed across the polymeric chains and their fit to the map. The red, orange, yellow and green segments of the bar indicate the fraction of residues that contain outliers for ≥ 3 , 2, 1 and 0 types of geometric quality criteria respectively. A grey segment represents the fraction of residues that are not modelled. The numeric value for each fraction is indicated below the corresponding segment, with a dot representing fractions $\leq 5\%$. The upper red bar (where present) indicates the fraction of residues that have poor fit to the EM map (all-atom inclusion $< 40\%$). The numeric value is given above the bar.

Mol	Chain	Length	Quality of chain
1	A	177	
1	D	177	
1	F	177	
1	H	177	
2	B	692	
2	C	692	
2	E	692	
2	G	692	

2 Entry composition

There are 5 unique types of molecules in this entry. The entry contains 27652 atoms, of which 13372 are hydrogens and 0 are deuteriums.

In the tables below, the AltConf column contains the number of residues with at least one atom in alternate conformation and the Trace column contains the number of residues modelled with at most 2 atoms.

- Molecule 1 is a protein called Calmodulin-3.

Mol	Chain	Residues	Atoms						AltConf	Trace
1	A	144	Total	C	H	N	O	S	0	0
			1377	520	549	154	152	2		
1	D	144	Total	C	H	N	O	S	0	0
			1377	520	549	154	152	2		
1	F	144	Total	C	H	N	O	S	0	0
			1377	520	549	154	152	2		
1	H	144	Total	C	H	N	O	S	0	0
			1377	520	549	154	152	2		

There are 112 discrepancies between the modelled and reference sequences:

Chain	Residue	Modelled	Actual	Comment	Reference
A	150	LEU	-	expression tag	UNP P0DP25
A	151	GLU	-	expression tag	UNP P0DP25
A	152	GLY	-	expression tag	UNP P0DP25
A	153	GLY	-	expression tag	UNP P0DP25
A	154	SER	-	expression tag	UNP P0DP25
A	155	SER	-	expression tag	UNP P0DP25
A	156	GLY	-	expression tag	UNP P0DP25
A	157	GLY	-	expression tag	UNP P0DP25
A	158	LEU	-	expression tag	UNP P0DP25
A	159	VAL	-	expression tag	UNP P0DP25
A	160	PRO	-	expression tag	UNP P0DP25
A	161	ARG	-	expression tag	UNP P0DP25
A	162	GLY	-	expression tag	UNP P0DP25
A	163	SER	-	expression tag	UNP P0DP25
A	164	GLY	-	expression tag	UNP P0DP25
A	165	GLY	-	expression tag	UNP P0DP25
A	166	SER	-	expression tag	UNP P0DP25
A	167	SER	-	expression tag	UNP P0DP25
A	168	GLY	-	expression tag	UNP P0DP25
A	169	GLY	-	expression tag	UNP P0DP25
A	170	HIS	-	expression tag	UNP P0DP25
A	171	HIS	-	expression tag	UNP P0DP25

Continued on next page...

Continued from previous page...

Chain	Residue	Modelled	Actual	Comment	Reference
A	172	HIS	-	expression tag	UNP P0DP25
A	173	HIS	-	expression tag	UNP P0DP25
A	174	HIS	-	expression tag	UNP P0DP25
A	175	HIS	-	expression tag	UNP P0DP25
A	176	HIS	-	expression tag	UNP P0DP25
A	177	HIS	-	expression tag	UNP P0DP25
D	150	LEU	-	expression tag	UNP P0DP25
D	151	GLU	-	expression tag	UNP P0DP25
D	152	GLY	-	expression tag	UNP P0DP25
D	153	GLY	-	expression tag	UNP P0DP25
D	154	SER	-	expression tag	UNP P0DP25
D	155	SER	-	expression tag	UNP P0DP25
D	156	GLY	-	expression tag	UNP P0DP25
D	157	GLY	-	expression tag	UNP P0DP25
D	158	LEU	-	expression tag	UNP P0DP25
D	159	VAL	-	expression tag	UNP P0DP25
D	160	PRO	-	expression tag	UNP P0DP25
D	161	ARG	-	expression tag	UNP P0DP25
D	162	GLY	-	expression tag	UNP P0DP25
D	163	SER	-	expression tag	UNP P0DP25
D	164	GLY	-	expression tag	UNP P0DP25
D	165	GLY	-	expression tag	UNP P0DP25
D	166	SER	-	expression tag	UNP P0DP25
D	167	SER	-	expression tag	UNP P0DP25
D	168	GLY	-	expression tag	UNP P0DP25
D	169	GLY	-	expression tag	UNP P0DP25
D	170	HIS	-	expression tag	UNP P0DP25
D	171	HIS	-	expression tag	UNP P0DP25
D	172	HIS	-	expression tag	UNP P0DP25
D	173	HIS	-	expression tag	UNP P0DP25
D	174	HIS	-	expression tag	UNP P0DP25
D	175	HIS	-	expression tag	UNP P0DP25
D	176	HIS	-	expression tag	UNP P0DP25
D	177	HIS	-	expression tag	UNP P0DP25
F	150	LEU	-	expression tag	UNP P0DP25
F	151	GLU	-	expression tag	UNP P0DP25
F	152	GLY	-	expression tag	UNP P0DP25
F	153	GLY	-	expression tag	UNP P0DP25
F	154	SER	-	expression tag	UNP P0DP25
F	155	SER	-	expression tag	UNP P0DP25
F	156	GLY	-	expression tag	UNP P0DP25
F	157	GLY	-	expression tag	UNP P0DP25

Continued on next page...

Continued from previous page...

Chain	Residue	Modelled	Actual	Comment	Reference
F	158	LEU	-	expression tag	UNP P0DP25
F	159	VAL	-	expression tag	UNP P0DP25
F	160	PRO	-	expression tag	UNP P0DP25
F	161	ARG	-	expression tag	UNP P0DP25
F	162	GLY	-	expression tag	UNP P0DP25
F	163	SER	-	expression tag	UNP P0DP25
F	164	GLY	-	expression tag	UNP P0DP25
F	165	GLY	-	expression tag	UNP P0DP25
F	166	SER	-	expression tag	UNP P0DP25
F	167	SER	-	expression tag	UNP P0DP25
F	168	GLY	-	expression tag	UNP P0DP25
F	169	GLY	-	expression tag	UNP P0DP25
F	170	HIS	-	expression tag	UNP P0DP25
F	171	HIS	-	expression tag	UNP P0DP25
F	172	HIS	-	expression tag	UNP P0DP25
F	173	HIS	-	expression tag	UNP P0DP25
F	174	HIS	-	expression tag	UNP P0DP25
F	175	HIS	-	expression tag	UNP P0DP25
F	176	HIS	-	expression tag	UNP P0DP25
F	177	HIS	-	expression tag	UNP P0DP25
H	150	LEU	-	expression tag	UNP P0DP25
H	151	GLU	-	expression tag	UNP P0DP25
H	152	GLY	-	expression tag	UNP P0DP25
H	153	GLY	-	expression tag	UNP P0DP25
H	154	SER	-	expression tag	UNP P0DP25
H	155	SER	-	expression tag	UNP P0DP25
H	156	GLY	-	expression tag	UNP P0DP25
H	157	GLY	-	expression tag	UNP P0DP25
H	158	LEU	-	expression tag	UNP P0DP25
H	159	VAL	-	expression tag	UNP P0DP25
H	160	PRO	-	expression tag	UNP P0DP25
H	161	ARG	-	expression tag	UNP P0DP25
H	162	GLY	-	expression tag	UNP P0DP25
H	163	SER	-	expression tag	UNP P0DP25
H	164	GLY	-	expression tag	UNP P0DP25
H	165	GLY	-	expression tag	UNP P0DP25
H	166	SER	-	expression tag	UNP P0DP25
H	167	SER	-	expression tag	UNP P0DP25
H	168	GLY	-	expression tag	UNP P0DP25
H	169	GLY	-	expression tag	UNP P0DP25
H	170	HIS	-	expression tag	UNP P0DP25
H	171	HIS	-	expression tag	UNP P0DP25

Continued on next page...

Continued from previous page...

Chain	Residue	Modelled	Actual	Comment	Reference
H	172	HIS	-	expression tag	UNP P0DP25
H	173	HIS	-	expression tag	UNP P0DP25
H	174	HIS	-	expression tag	UNP P0DP25
H	175	HIS	-	expression tag	UNP P0DP25
H	176	HIS	-	expression tag	UNP P0DP25
H	177	HIS	-	expression tag	UNP P0DP25

- Molecule 2 is a protein called Potassium voltage-gated channel subfamily KQT member 1.

Mol	Chain	Residues	Atoms						AltConf	Trace
2	B	330	Total	C	H	N	O	S	0	0
			5387	1749	2725	464	438	11		
2	C	330	Total	C	H	N	O	S	0	0
			5387	1749	2725	464	438	11		
2	E	330	Total	C	H	N	O	S	0	0
			5387	1749	2725	464	438	11		
2	G	330	Total	C	H	N	O	S	0	0
			5387	1749	2725	464	438	11		

There are 64 discrepancies between the modelled and reference sequences:

Chain	Residue	Modelled	Actual	Comment	Reference
B	677	LEU	-	expression tag	UNP P51787
B	678	GLU	-	expression tag	UNP P51787
B	679	GLY	-	expression tag	UNP P51787
B	680	GLY	-	expression tag	UNP P51787
B	681	SER	-	expression tag	UNP P51787
B	682	SER	-	expression tag	UNP P51787
B	683	GLY	-	expression tag	UNP P51787
B	684	GLY	-	expression tag	UNP P51787
B	685	TRP	-	expression tag	UNP P51787
B	686	SER	-	expression tag	UNP P51787
B	687	HIS	-	expression tag	UNP P51787
B	688	PRO	-	expression tag	UNP P51787
B	689	GLN	-	expression tag	UNP P51787
B	690	PHE	-	expression tag	UNP P51787
B	691	GLU	-	expression tag	UNP P51787
B	692	LYS	-	expression tag	UNP P51787
C	677	LEU	-	expression tag	UNP P51787
C	678	GLU	-	expression tag	UNP P51787
C	679	GLY	-	expression tag	UNP P51787
C	680	GLY	-	expression tag	UNP P51787

Continued on next page...

Continued from previous page...

Chain	Residue	Modelled	Actual	Comment	Reference
C	681	SER	-	expression tag	UNP P51787
C	682	SER	-	expression tag	UNP P51787
C	683	GLY	-	expression tag	UNP P51787
C	684	GLY	-	expression tag	UNP P51787
C	685	TRP	-	expression tag	UNP P51787
C	686	SER	-	expression tag	UNP P51787
C	687	HIS	-	expression tag	UNP P51787
C	688	PRO	-	expression tag	UNP P51787
C	689	GLN	-	expression tag	UNP P51787
C	690	PHE	-	expression tag	UNP P51787
C	691	GLU	-	expression tag	UNP P51787
C	692	LYS	-	expression tag	UNP P51787
E	677	LEU	-	expression tag	UNP P51787
E	678	GLU	-	expression tag	UNP P51787
E	679	GLY	-	expression tag	UNP P51787
E	680	GLY	-	expression tag	UNP P51787
E	681	SER	-	expression tag	UNP P51787
E	682	SER	-	expression tag	UNP P51787
E	683	GLY	-	expression tag	UNP P51787
E	684	GLY	-	expression tag	UNP P51787
E	685	TRP	-	expression tag	UNP P51787
E	686	SER	-	expression tag	UNP P51787
E	687	HIS	-	expression tag	UNP P51787
E	688	PRO	-	expression tag	UNP P51787
E	689	GLN	-	expression tag	UNP P51787
E	690	PHE	-	expression tag	UNP P51787
E	691	GLU	-	expression tag	UNP P51787
E	692	LYS	-	expression tag	UNP P51787
G	677	LEU	-	expression tag	UNP P51787
G	678	GLU	-	expression tag	UNP P51787
G	679	GLY	-	expression tag	UNP P51787
G	680	GLY	-	expression tag	UNP P51787
G	681	SER	-	expression tag	UNP P51787
G	682	SER	-	expression tag	UNP P51787
G	683	GLY	-	expression tag	UNP P51787
G	684	GLY	-	expression tag	UNP P51787
G	685	TRP	-	expression tag	UNP P51787
G	686	SER	-	expression tag	UNP P51787
G	687	HIS	-	expression tag	UNP P51787
G	688	PRO	-	expression tag	UNP P51787
G	689	GLN	-	expression tag	UNP P51787
G	690	PHE	-	expression tag	UNP P51787

Continued on next page...

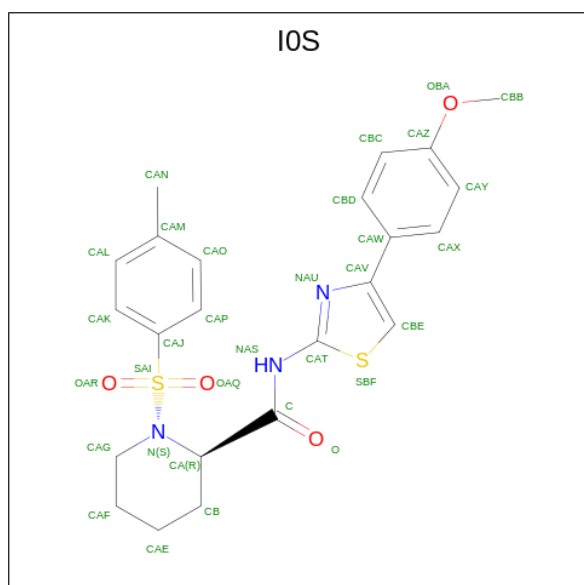
Continued from previous page...

Chain	Residue	Modelled	Actual	Comment	Reference
G	691	GLU	-	expression tag	UNP P51787
G	692	LYS	-	expression tag	UNP P51787

- Molecule 3 is POTASSIUM ION (three-letter code: K) (formula: K).

Mol	Chain	Residues	Atoms	AltConf
3	B	3	Total K 3 3	0
3	C	1	Total K 1 1	0

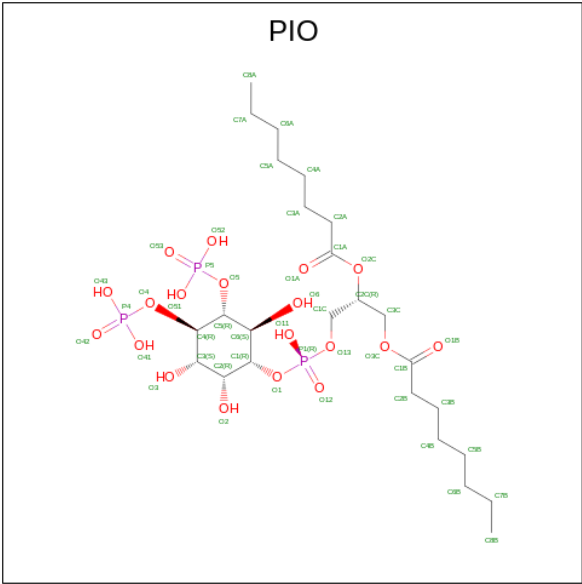
- Molecule 4 is (2R)-N-[4-(4-methoxyphenyl)-1,3-thiazol-2-yl]-1-(4-methylbenzene-1-sulfonyl)piperidine-2-carboxamide (three-letter code: IOS) (formula: C₂₃H₂₅N₃O₄S₂).



Mol	Chain	Residues	Atoms	AltConf
4	B	1	Total C H N O S 57 23 25 3 4 2	0
4	C	1	Total C H N O S 57 23 25 3 4 2	0
4	E	1	Total C H N O S 57 23 25 3 4 2	0
4	G	1	Total C H N O S 57 23 25 3 4 2	0

- Molecule 5 is [(2R)-2-octanoyloxy-3-[oxidanyl-[(1R,2R,3S,4R,5R,6S)-2,3,6-tris(oxidanyl)-4,5-diphosphonooxy-cyclohexyl]oxy-phosphoryl]oxy-propyl] octanoate (three-letter code: PIO)

(formula: C₂₅H₄₉O₁₉P₃).

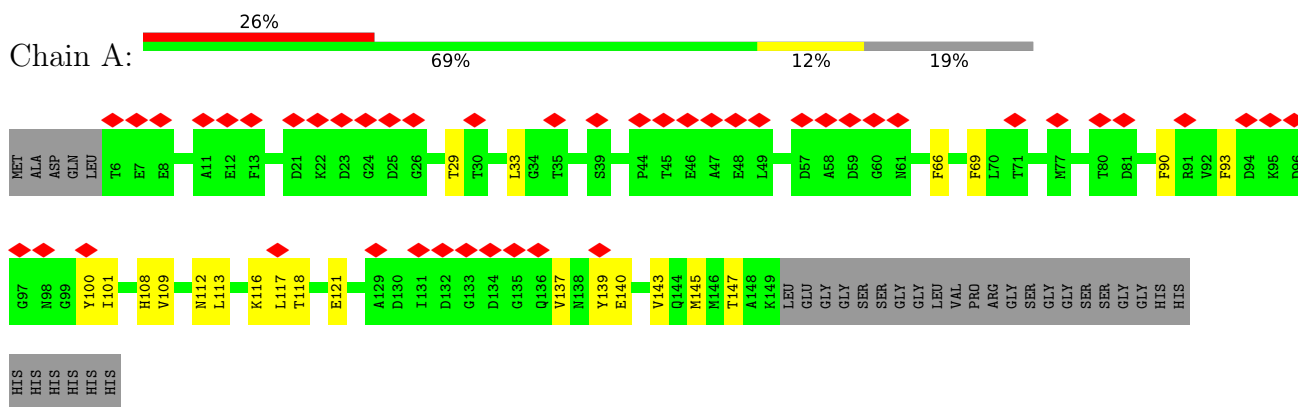


Mol	Chain	Residues	Atoms					AltConf
5	B	1	Total	C	H	O	P	0
			91	25	44	19	3	
5	C	1	Total	C	H	O	P	0
			91	25	44	19	3	
5	E	1	Total	C	H	O	P	0
			91	25	44	19	3	
5	G	1	Total	C	H	O	P	0
			91	25	44	19	3	

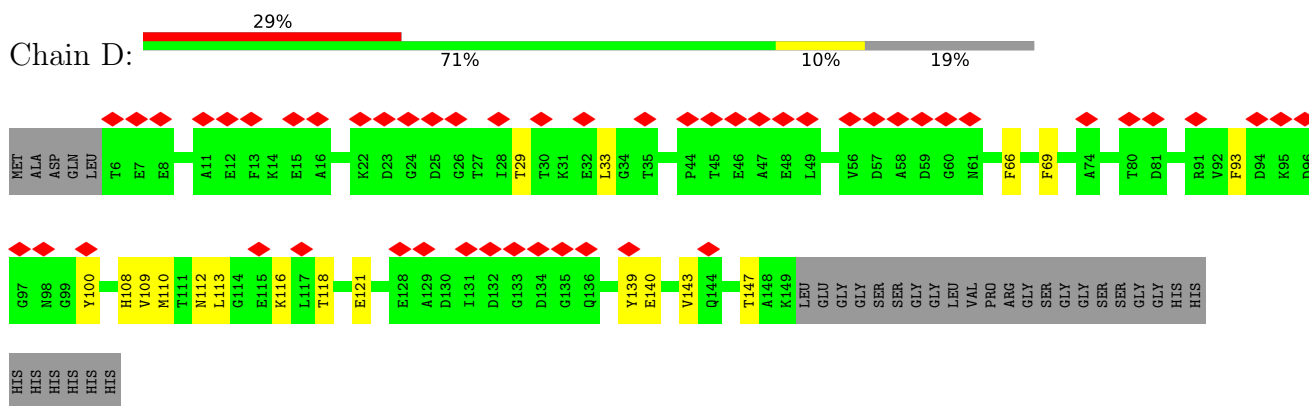
3 Residue-property plots [i](#)

These plots are drawn for all protein, RNA, DNA and oligosaccharide chains in the entry. The first graphic for a chain summarises the proportions of the various outlier classes displayed in the second graphic. The second graphic shows the sequence view annotated by issues in geometry and atom inclusion in map density. Residues are color-coded according to the number of geometric quality criteria for which they contain at least one outlier: green = 0, yellow = 1, orange = 2 and red = 3 or more. A red diamond above a residue indicates a poor fit to the EM map for this residue (all-atom inclusion < 40%). Stretches of 2 or more consecutive residues without any outlier are shown as a green connector. Residues present in the sample, but not in the model, are shown in grey.

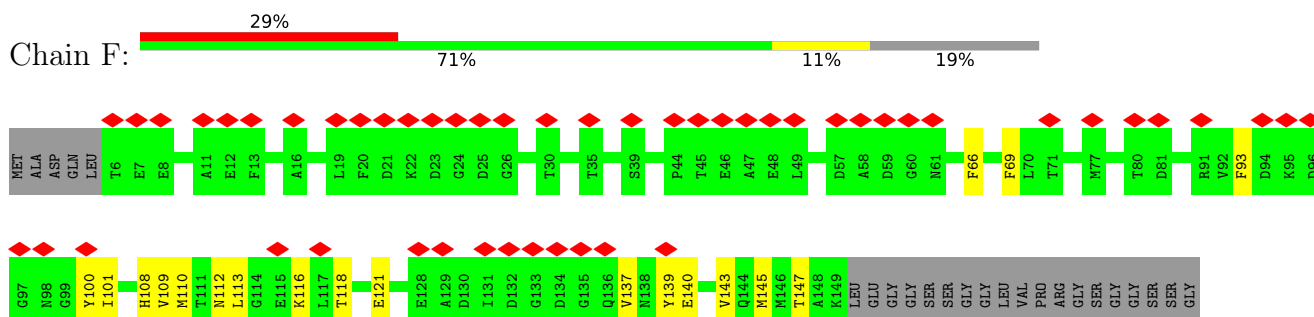
• Molecule 1: Calmodulin-3

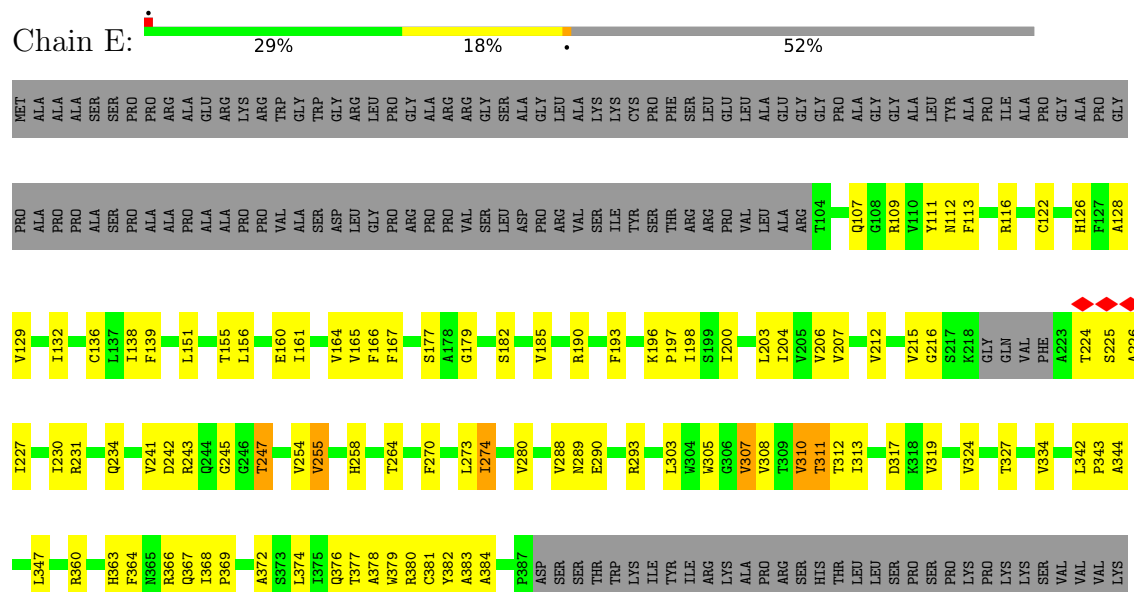


• Molecule 1: Calmodulin-3



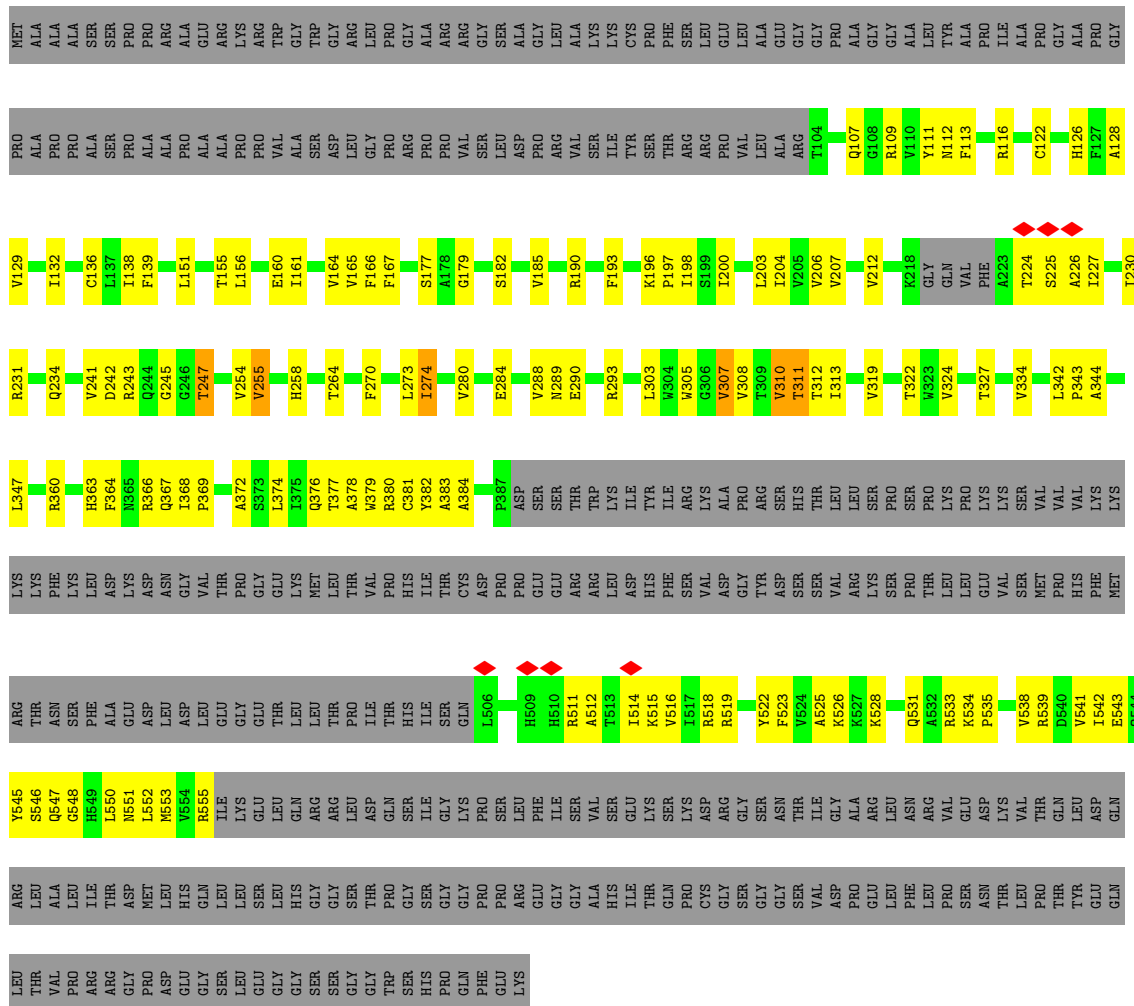
• Molecule 1: Calmodulin-3







Chain G:



4 Experimental information

Property	Value	Source
EM reconstruction method	SINGLE PARTICLE	Depositor
Imposed symmetry	POINT, Not provided	
Number of particles used	257550	Depositor
Resolution determination method	FSC 0.143 CUT-OFF	Depositor
CTF correction method	PHASE FLIPPING AND AMPLITUDE CORRECTION	Depositor
Microscope	FEI TITAN KRIOS	Depositor
Voltage (kV)	300	Depositor
Electron dose ($e^-/\text{\AA}^2$)	64	Depositor
Minimum defocus (nm)	-1100	Depositor
Maximum defocus (nm)	-1300	Depositor
Magnification	Not provided	
Image detector	GATAN K2 SUMMIT (4k x 4k)	Depositor
Maximum map value	0.096	Depositor
Minimum map value	-0.046	Depositor
Average map value	-0.000	Depositor
Map value standard deviation	0.002	Depositor
Recommended contour level	0.0081	Depositor
Map size (Å)	243.36002, 243.36002, 243.36002	wwPDB
Map dimensions	240, 240, 240	wwPDB
Map angles (°)	90.0, 90.0, 90.0	wwPDB
Pixel spacing (Å)	1.014, 1.014, 1.014	Depositor

5 Model quality

5.1 Standard geometry

Bond lengths and bond angles in the following residue types are not validated in this section: PIO, K, IOS

The Z score for a bond length (or angle) is the number of standard deviations the observed value is removed from the expected value. A bond length (or angle) with $|Z| > 5$ is considered an outlier worth inspection. RMSZ is the root-mean-square of all Z scores of the bond lengths (or angles).

Mol	Chain	Bond lengths		Bond angles	
		RMSZ	$\# Z > 5$	RMSZ	$\# Z > 5$
1	A	0.35	0/838	0.47	0/1152
1	D	0.35	0/838	0.47	0/1152
1	F	0.35	0/838	0.47	0/1152
1	H	0.35	0/838	0.47	0/1152
2	B	1.24	24/2729 (0.9%)	0.63	1/3695 (0.0%)
2	C	1.24	24/2729 (0.9%)	0.62	1/3695 (0.0%)
2	E	1.24	24/2729 (0.9%)	0.63	1/3695 (0.0%)
2	G	1.24	24/2729 (0.9%)	0.63	1/3695 (0.0%)
All	All	1.10	96/14268 (0.7%)	0.59	4/19388 (0.0%)

All (96) bond length outliers are listed below:

Mol	Chain	Res	Type	Atoms	Z	Observed(Å)	Ideal(Å)
2	B	280	VAL	CB-CG1	-8.66	1.34	1.52
2	C	280	VAL	CB-CG1	-8.65	1.34	1.52
2	E	280	VAL	CB-CG1	-8.65	1.34	1.52
2	G	280	VAL	CB-CG1	-8.65	1.34	1.52
2	B	307	VAL	CB-CG2	-8.37	1.35	1.52
2	C	307	VAL	CB-CG2	-8.35	1.35	1.52
2	E	307	VAL	CB-CG2	-8.35	1.35	1.52
2	G	307	VAL	CB-CG2	-8.35	1.35	1.52
2	G	319	VAL	CB-CG2	-8.15	1.35	1.52
2	C	319	VAL	CB-CG2	-8.12	1.35	1.52
2	B	319	VAL	CB-CG2	-8.10	1.35	1.52
2	E	319	VAL	CB-CG2	-8.08	1.35	1.52
2	B	310	VAL	CB-CG2	-7.83	1.36	1.52
2	C	310	VAL	CB-CG2	-7.81	1.36	1.52
2	E	310	VAL	CB-CG2	-7.81	1.36	1.52
2	G	310	VAL	CB-CG2	-7.81	1.36	1.52
2	B	308	VAL	CB-CG1	-7.49	1.37	1.52
2	C	308	VAL	CB-CG1	-7.49	1.37	1.52

Continued on next page...

Continued from previous page...

Mol	Chain	Res	Type	Atoms	Z	Observed(Å)	Ideal(Å)
2	E	308	VAL	CB-CG1	-7.49	1.37	1.52
2	G	308	VAL	CB-CG1	-7.47	1.37	1.52
2	G	307	VAL	CB-CG1	-7.19	1.37	1.52
2	B	307	VAL	CB-CG1	-7.17	1.37	1.52
2	C	307	VAL	CB-CG1	-7.17	1.37	1.52
2	E	307	VAL	CB-CG1	-7.17	1.37	1.52
2	B	305	TRP	CB-CG	-7.13	1.37	1.50
2	C	305	TRP	CB-CG	-7.13	1.37	1.50
2	E	305	TRP	CB-CG	-7.13	1.37	1.50
2	G	305	TRP	CB-CG	-7.13	1.37	1.50
2	B	308	VAL	CB-CG2	-7.08	1.38	1.52
2	C	308	VAL	CB-CG2	-7.06	1.38	1.52
2	E	308	VAL	CB-CG2	-7.05	1.38	1.52
2	G	308	VAL	CB-CG2	-7.05	1.38	1.52
2	B	334	VAL	CB-CG2	-6.89	1.38	1.52
2	C	334	VAL	CB-CG2	-6.89	1.38	1.52
2	E	334	VAL	CB-CG2	-6.89	1.38	1.52
2	G	334	VAL	CB-CG2	-6.86	1.38	1.52
2	B	319	VAL	CB-CG1	-6.79	1.38	1.52
2	G	319	VAL	CB-CG1	-6.79	1.38	1.52
2	E	319	VAL	CB-CG1	-6.78	1.38	1.52
2	C	319	VAL	CB-CG1	-6.74	1.38	1.52
2	G	324	VAL	CB-CG1	-6.69	1.38	1.52
2	B	324	VAL	CB-CG1	-6.66	1.38	1.52
2	C	324	VAL	CB-CG1	-6.65	1.38	1.52
2	E	324	VAL	CB-CG1	-6.65	1.38	1.52
2	C	280	VAL	CB-CG2	-6.55	1.39	1.52
2	E	280	VAL	CB-CG2	-6.55	1.39	1.52
2	G	280	VAL	CB-CG2	-6.55	1.39	1.52
2	B	280	VAL	CB-CG2	-6.54	1.39	1.52
2	B	255	VAL	CB-CG1	-6.37	1.39	1.52
2	E	255	VAL	CB-CG1	-6.37	1.39	1.52
2	G	255	VAL	CB-CG1	-6.34	1.39	1.52
2	C	255	VAL	CB-CG1	-6.32	1.39	1.52
2	C	334	VAL	CB-CG1	-6.16	1.40	1.52
2	E	334	VAL	CB-CG1	-6.16	1.40	1.52
2	B	334	VAL	CB-CG1	-6.16	1.40	1.52
2	G	334	VAL	CB-CG1	-6.15	1.40	1.52
2	B	324	VAL	CB-CG2	-5.97	1.40	1.52
2	C	255	VAL	CB-CG2	-5.96	1.40	1.52
2	G	255	VAL	CB-CG2	-5.96	1.40	1.52
2	B	255	VAL	CB-CG2	-5.96	1.40	1.52

Continued on next page...

Continued from previous page...

Mol	Chain	Res	Type	Atoms	Z	Observed(Å)	Ideal(Å)
2	G	324	VAL	CB-CG2	-5.95	1.40	1.52
2	C	324	VAL	CB-CG2	-5.94	1.40	1.52
2	E	255	VAL	CB-CG2	-5.93	1.40	1.52
2	E	324	VAL	CB-CG2	-5.90	1.40	1.52
2	C	311	THR	CB-CG2	-5.51	1.34	1.52
2	G	311	THR	CB-CG2	-5.50	1.34	1.52
2	B	311	THR	CB-CG2	-5.48	1.34	1.52
2	E	311	THR	CB-CG2	-5.47	1.34	1.52
2	C	310	VAL	CB-CG1	-5.36	1.41	1.52
2	E	310	VAL	CB-CG1	-5.36	1.41	1.52
2	G	310	VAL	CB-CG1	-5.36	1.41	1.52
2	C	254	VAL	CB-CG2	-5.36	1.41	1.52
2	E	254	VAL	CB-CG2	-5.36	1.41	1.52
2	G	254	VAL	CB-CG2	-5.36	1.41	1.52
2	B	254	VAL	CB-CG2	-5.35	1.41	1.52
2	B	310	VAL	CB-CG1	-5.35	1.41	1.52
2	B	247	THR	CB-CG2	-5.31	1.34	1.52
2	E	247	THR	CB-CG2	-5.31	1.34	1.52
2	E	254	VAL	CB-CG1	-5.31	1.41	1.52
2	G	247	THR	CB-CG2	-5.31	1.34	1.52
2	C	247	THR	CB-CG2	-5.30	1.34	1.52
2	B	254	VAL	CB-CG1	-5.27	1.41	1.52
2	C	254	VAL	CB-CG1	-5.26	1.41	1.52
2	G	254	VAL	CB-CG1	-5.26	1.41	1.52
2	G	274	ILE	CB-CG2	-5.20	1.36	1.52
2	E	313	ILE	CB-CG2	-5.20	1.36	1.52
2	B	313	ILE	CB-CG2	-5.19	1.36	1.52
2	C	313	ILE	CB-CG2	-5.18	1.36	1.52
2	G	313	ILE	CB-CG2	-5.18	1.36	1.52
2	B	274	ILE	CB-CG2	-5.17	1.36	1.52
2	C	274	ILE	CB-CG2	-5.17	1.36	1.52
2	E	274	ILE	CB-CG2	-5.17	1.36	1.52
2	C	327	THR	CB-CG2	-5.17	1.35	1.52
2	E	327	THR	CB-CG2	-5.17	1.35	1.52
2	G	327	THR	CB-CG2	-5.14	1.35	1.52
2	B	327	THR	CB-CG2	-5.13	1.35	1.52

All (4) bond angle outliers are listed below:

Mol	Chain	Res	Type	Atoms	Z	Observed(°)	Ideal(°)
2	G	303	LEU	CA-CB-CG	6.70	130.71	115.30
2	C	303	LEU	CA-CB-CG	6.70	130.70	115.30

Continued on next page...

Continued from previous page...

Mol	Chain	Res	Type	Atoms	Z	Observed(°)	Ideal(°)
2	E	303	LEU	CA-CB-CG	6.70	130.70	115.30
2	B	303	LEU	CA-CB-CG	6.68	130.67	115.30

There are no chirality outliers.

There are no planarity outliers.

5.2 Too-close contacts ⓘ

In the following table, the Non-H and H(model) columns list the number of non-hydrogen atoms and hydrogen atoms in the chain respectively. The H(added) column lists the number of hydrogen atoms added and optimized by MolProbity. The Clashes column lists the number of clashes within the asymmetric unit, whereas Symm-Clashes lists symmetry-related clashes.

Mol	Chain	Non-H	H(model)	H(added)	Clashes	Symm-Clashes
1	A	828	549	549	14	0
1	D	828	549	549	11	0
1	F	828	549	549	13	0
1	H	828	549	549	11	0
2	B	2662	2725	2726	101	0
2	C	2662	2725	2726	99	0
2	E	2662	2725	2726	102	0
2	G	2662	2725	2726	102	0
3	B	3	0	0	0	0
3	C	1	0	0	0	0
4	B	32	25	0	0	0
4	C	32	25	0	0	0
4	E	32	25	0	0	0
4	G	32	25	0	0	0
5	B	47	44	44	2	0
5	C	47	44	44	3	0
5	E	47	44	44	2	0
5	G	47	44	44	3	0
All	All	14280	13372	13276	424	0

The all-atom clashscore is defined as the number of clashes found per 1000 atoms (including hydrogen atoms). The all-atom clashscore for this structure is 15.

All (424) close contacts within the same asymmetric unit are listed below, sorted by their clash magnitude.

Atom-1	Atom-2	Interatomic distance (Å)	Clash overlap (Å)
1:F:108:HIS:O	1:F:112:ASN:ND2	1.99	0.96
1:A:108:HIS:O	1:A:112:ASN:ND2	1.99	0.95
1:H:108:HIS:O	1:H:112:ASN:ND2	1.99	0.95
1:D:108:HIS:O	1:D:112:ASN:ND2	1.99	0.95
1:H:93:PHE:O	1:H:100:TYR:OH	1.88	0.91
1:D:93:PHE:O	1:D:100:TYR:OH	1.88	0.90
1:A:93:PHE:O	1:A:100:TYR:OH	1.88	0.89
1:F:93:PHE:O	1:F:100:TYR:OH	1.88	0.89
5:C:703:PIO:O43	5:C:703:PIO:O6	1.94	0.84
5:G:902:PIO:O43	5:G:902:PIO:O6	1.94	0.84
2:E:552:LEU:O	2:E:555:ARG:N	2.22	0.73
2:C:552:LEU:O	2:C:555:ARG:N	2.22	0.72
2:G:552:LEU:O	2:G:555:ARG:N	2.22	0.72
2:B:552:LEU:O	2:B:555:ARG:N	2.22	0.71
1:A:143:VAL:O	1:A:147:THR:N	2.24	0.71
1:D:143:VAL:O	1:D:147:THR:N	2.24	0.71
1:F:143:VAL:O	1:F:147:THR:N	2.24	0.71
1:H:143:VAL:O	1:H:147:THR:N	2.24	0.70
2:E:311:THR:O	2:E:312:THR:OG1	2.12	0.68
2:G:311:THR:O	2:G:312:THR:OG1	2.12	0.68
2:C:311:THR:O	2:C:312:THR:OG1	2.12	0.67
2:B:311:THR:O	2:B:312:THR:OG1	2.12	0.67
1:A:145:MET:O	2:B:382:TYR:OH	2.09	0.64
2:C:289:ASN:OD1	2:C:290:GLU:N	2.33	0.62
2:G:289:ASN:OD1	2:G:290:GLU:N	2.33	0.62
2:B:289:ASN:OD1	2:B:290:GLU:N	2.33	0.62
2:E:289:ASN:OD1	2:E:290:GLU:N	2.33	0.62
2:C:380:ARG:NH2	1:D:116:LYS:O	2.33	0.62
2:E:107:GLN:O	2:E:177:SER:OG	2.18	0.62
2:C:107:GLN:O	2:C:177:SER:OG	2.17	0.61
1:D:118:THR:O	1:D:121:GLU:N	2.34	0.60
1:H:118:THR:O	1:H:121:GLU:N	2.34	0.60
1:F:118:THR:O	1:F:121:GLU:N	2.34	0.60
1:A:118:THR:O	1:A:121:GLU:N	2.34	0.60
2:G:139:PHE:HB3	2:G:156:LEU:HD11	1.84	0.59
2:E:139:PHE:HB3	2:E:156:LEU:HD11	1.84	0.59
2:E:224:THR:HG23	2:E:225:SER:N	2.18	0.59
2:B:224:THR:HG23	2:B:225:SER:N	2.18	0.58
2:C:197:PRO:O	2:C:200:ILE:HG22	2.03	0.58
2:C:224:THR:HG23	2:C:225:SER:N	2.18	0.58
2:G:224:THR:HG23	2:G:225:SER:N	2.18	0.58
2:B:197:PRO:O	2:B:200:ILE:HG22	2.03	0.58

Continued on next page...

Continued from previous page...

Atom-1	Atom-2	Interatomic distance (Å)	Clash overlap (Å)
2:C:139:PHE:HB3	2:C:156:LEU:HD11	1.84	0.58
2:B:139:PHE:HB3	2:B:156:LEU:HD11	1.84	0.58
2:B:107:GLN:O	2:B:177:SER:OG	2.17	0.57
2:G:197:PRO:O	2:G:200:ILE:HG22	2.03	0.57
2:E:197:PRO:O	2:E:200:ILE:HG22	2.03	0.57
2:G:107:GLN:O	2:G:177:SER:OG	2.17	0.57
2:G:270:PHE:O	2:G:274:ILE:HG12	2.05	0.57
2:C:270:PHE:O	2:C:274:ILE:HG12	2.05	0.57
2:B:270:PHE:O	2:B:274:ILE:HG12	2.05	0.56
2:G:378:ALA:HB2	2:G:522:TYR:HE2	1.70	0.56
2:C:538:VAL:O	2:C:541:VAL:HG22	2.05	0.56
2:E:378:ALA:HB2	2:E:522:TYR:HE2	1.70	0.56
2:G:382:TYR:OH	1:H:145:MET:O	2.15	0.56
2:B:538:VAL:O	2:B:541:VAL:HG22	2.05	0.56
2:E:538:VAL:O	2:E:541:VAL:HG22	2.05	0.56
2:C:116:ARG:NH2	5:C:703:PIO:O52	2.38	0.56
2:C:378:ALA:HB2	2:C:522:TYR:HE2	1.70	0.56
2:G:538:VAL:O	2:G:541:VAL:HG22	2.05	0.56
2:G:116:ARG:NH2	5:G:902:PIO:O52	2.38	0.55
2:C:224:THR:HG23	2:C:225:SER:H	1.71	0.55
2:E:270:PHE:O	2:E:274:ILE:HG12	2.05	0.55
2:E:116:ARG:NH2	5:E:902:PIO:O52	2.38	0.55
2:G:224:THR:HG23	2:G:225:SER:H	1.71	0.55
2:B:224:THR:HG23	2:B:225:SER:H	1.71	0.55
2:C:383:ALA:O	2:C:518:ARG:NH1	2.40	0.55
2:E:224:THR:HG23	2:E:225:SER:H	1.71	0.55
2:E:383:ALA:O	2:E:518:ARG:NH1	2.40	0.55
2:B:378:ALA:HB2	2:B:522:TYR:HE2	1.70	0.55
2:E:535:PRO:HB3	2:E:541:VAL:HG13	1.89	0.55
2:B:116:ARG:NH2	5:B:705:PIO:O52	2.38	0.54
2:C:535:PRO:HB3	2:C:541:VAL:HG13	1.89	0.54
2:B:383:ALA:O	2:B:518:ARG:NH1	2.40	0.54
2:G:383:ALA:O	2:G:518:ARG:NH1	2.40	0.54
1:H:66:PHE:HA	1:H:69:PHE:HB3	1.90	0.54
1:F:66:PHE:HA	1:F:69:PHE:HB3	1.90	0.54
2:G:535:PRO:HB3	2:G:541:VAL:HG13	1.89	0.54
2:B:241:VAL:HG13	2:B:242:ASP:N	2.24	0.53
2:C:241:VAL:HG13	2:C:242:ASP:N	2.24	0.53
2:G:126:HIS:O	2:G:129:VAL:HG12	2.08	0.53
1:A:66:PHE:HA	1:A:69:PHE:HB3	1.89	0.53
2:B:550:LEU:HD21	2:G:545:TYR:HE1	1.74	0.53

Continued on next page...

Continued from previous page...

Atom-1	Atom-2	Interatomic distance (Å)	Clash overlap (Å)
2:E:241:VAL:HG13	2:E:242:ASP:N	2.23	0.53
2:G:241:VAL:HG13	2:G:242:ASP:N	2.23	0.53
2:E:126:HIS:O	2:E:129:VAL:HG12	2.08	0.53
2:B:126:HIS:O	2:B:129:VAL:HG12	2.08	0.53
2:B:535:PRO:HB3	2:B:541:VAL:HG13	1.89	0.53
2:B:264:THR:HG23	2:G:247:THR:HG23	1.90	0.53
2:C:307:VAL:O	2:C:311:THR:HG22	2.09	0.53
2:B:307:VAL:O	2:B:311:THR:HG22	2.09	0.53
1:D:66:PHE:HA	1:D:69:PHE:HB3	1.89	0.53
2:G:307:VAL:O	2:G:311:THR:HG22	2.09	0.52
2:G:151:LEU:H	2:G:151:LEU:HD23	1.75	0.52
2:B:151:LEU:H	2:B:151:LEU:HD23	1.75	0.52
2:C:151:LEU:HD23	2:C:151:LEU:H	1.75	0.52
2:E:151:LEU:HD23	2:E:151:LEU:H	1.75	0.52
2:C:126:HIS:O	2:C:129:VAL:HG12	2.08	0.52
2:E:545:TYR:HE1	2:G:550:LEU:HD21	1.75	0.52
2:G:368:ILE:HB	2:G:369:PRO:HD3	1.92	0.52
2:E:307:VAL:O	2:E:311:THR:HG22	2.09	0.51
2:B:113:PHE:CD1	2:B:122:CYS:HB3	2.45	0.51
2:B:368:ILE:HB	2:B:369:PRO:HD3	1.92	0.51
2:C:113:PHE:CD1	2:C:122:CYS:HB3	2.45	0.51
2:E:247:THR:HG23	2:G:264:THR:HG23	1.93	0.51
2:G:113:PHE:CD1	2:G:122:CYS:HB3	2.46	0.51
2:C:368:ILE:HB	2:C:369:PRO:HD3	1.92	0.50
2:C:545:TYR:HE1	2:E:550:LEU:HD21	1.74	0.50
2:G:203:LEU:O	2:G:206:VAL:HG12	2.11	0.50
2:B:161:ILE:O	2:B:164:VAL:HG12	2.12	0.50
2:E:161:ILE:O	2:E:164:VAL:HG12	2.12	0.50
2:E:368:ILE:HB	2:E:369:PRO:HD3	1.92	0.50
2:E:380:ARG:NH2	1:F:116:LYS:O	2.45	0.50
2:B:203:LEU:O	2:B:206:VAL:HG12	2.11	0.50
2:C:203:LEU:O	2:C:206:VAL:HG12	2.11	0.50
2:C:247:THR:HG23	2:E:264:THR:HG23	1.93	0.50
2:E:382:TYR:OH	1:F:145:MET:O	2.18	0.50
2:E:113:PHE:CD1	2:E:122:CYS:HB3	2.46	0.50
2:E:203:LEU:O	2:E:206:VAL:HG12	2.11	0.50
2:G:161:ILE:O	2:G:164:VAL:HG12	2.12	0.50
2:B:550:LEU:O	2:B:553:MET:N	2.45	0.49
2:C:161:ILE:O	2:C:164:VAL:HG12	2.12	0.49
2:C:550:LEU:O	2:C:553:MET:N	2.45	0.49
2:G:550:LEU:O	2:G:553:MET:N	2.45	0.49

Continued on next page...

Continued from previous page...

Atom-1	Atom-2	Interatomic distance (Å)	Clash overlap (Å)
2:B:247:THR:HG23	2:C:264:THR:HG23	1.93	0.49
2:B:525:ALA:O	2:B:526:LYS:C	2.51	0.49
2:G:378:ALA:HB2	2:G:522:TYR:CE2	2.47	0.49
2:B:378:ALA:HB2	2:B:522:TYR:CE2	2.47	0.49
2:E:378:ALA:HB2	2:E:522:TYR:CE2	2.47	0.49
2:C:525:ALA:O	2:C:526:LYS:C	2.51	0.49
2:E:550:LEU:O	2:E:553:MET:N	2.45	0.49
2:E:160:GLU:OE1	2:E:234:GLN:NE2	2.46	0.49
2:G:538:VAL:HG13	2:G:539:ARG:N	2.28	0.49
2:E:548:GLY:HA2	2:E:551:ASN:HD22	1.78	0.49
2:G:548:GLY:HA2	2:G:551:ASN:HD22	1.78	0.49
2:B:160:GLU:OE1	2:B:234:GLN:NE2	2.46	0.49
2:B:379:TRP:O	2:B:383:ALA:HB3	2.13	0.48
2:G:379:TRP:O	2:G:383:ALA:HB3	2.13	0.48
2:B:342:LEU:HB2	2:B:343:PRO:HD3	1.95	0.48
2:C:376:GLN:NE2	1:D:110:MET:HA	2.28	0.48
2:E:538:VAL:HG13	2:E:539:ARG:N	2.28	0.48
2:G:525:ALA:O	2:G:526:LYS:C	2.51	0.48
2:C:226:ALA:O	2:C:230:ILE:HG12	2.14	0.48
2:C:378:ALA:HB2	2:C:522:TYR:CE2	2.47	0.48
2:B:545:TYR:HE1	2:C:550:LEU:HD21	1.77	0.48
2:C:160:GLU:OE1	2:C:234:GLN:NE2	2.46	0.48
2:C:538:VAL:HG13	2:C:539:ARG:N	2.28	0.48
2:B:226:ALA:O	2:B:230:ILE:HG12	2.14	0.48
2:B:323:TRP:O	2:B:327:THR:OG1	2.25	0.48
2:B:548:GLY:HA2	2:B:551:ASN:HD22	1.78	0.48
2:G:160:GLU:OE1	2:G:234:GLN:NE2	2.46	0.48
2:G:226:ALA:O	2:G:230:ILE:HG12	2.14	0.48
2:C:342:LEU:HB2	2:C:343:PRO:HD3	1.95	0.48
2:C:548:GLY:HA2	2:C:551:ASN:HD22	1.78	0.48
2:B:538:VAL:HG13	2:B:539:ARG:N	2.28	0.48
2:E:379:TRP:O	2:E:383:ALA:HB3	2.13	0.48
2:C:379:TRP:O	2:C:383:ALA:HB3	2.13	0.47
2:G:190:ARG:O	2:G:193:PHE:HB3	2.14	0.47
2:B:204:ILE:HA	2:B:207:VAL:HG12	1.96	0.47
2:B:545:TYR:CZ	2:C:546:SER:OG	2.68	0.47
2:E:342:LEU:HB2	2:E:343:PRO:HD3	1.95	0.47
2:G:204:ILE:HA	2:G:207:VAL:HG12	1.96	0.47
2:E:190:ARG:O	2:E:193:PHE:HB3	2.14	0.47
2:C:138:ILE:O	2:C:138:ILE:HG22	2.15	0.47
2:E:226:ALA:O	2:E:230:ILE:HG12	2.14	0.47

Continued on next page...

Continued from previous page...

Atom-1	Atom-2	Interatomic distance (Å)	Clash overlap (Å)
2:E:288:VAL:HG13	2:E:288:VAL:O	2.14	0.47
2:E:525:ALA:O	2:E:526:LYS:C	2.51	0.47
2:G:538:VAL:O	2:G:541:VAL:CG2	2.63	0.47
2:B:546:SER:OG	2:G:545:TYR:CZ	2.68	0.47
2:E:538:VAL:O	2:E:541:VAL:CG2	2.63	0.47
2:G:342:LEU:HB2	2:G:343:PRO:HD3	1.95	0.47
2:B:538:VAL:O	2:B:541:VAL:CG2	2.63	0.47
2:E:204:ILE:HA	2:E:207:VAL:HG12	1.96	0.47
2:E:344:ALA:O	2:G:342:LEU:HD23	2.15	0.47
1:H:101:ILE:O	1:H:137:VAL:N	2.35	0.47
2:B:344:ALA:O	2:C:342:LEU:HD23	2.15	0.46
2:B:528:LYS:HA	2:B:531:GLN:NE2	2.31	0.46
2:C:190:ARG:O	2:C:193:PHE:HB3	2.15	0.46
2:C:204:ILE:HA	2:C:207:VAL:HG12	1.96	0.46
2:C:288:VAL:O	2:C:288:VAL:HG13	2.14	0.46
2:C:528:LYS:HA	2:C:531:GLN:NE2	2.31	0.46
2:E:111:TYR:HB2	2:E:177:SER:OG	2.16	0.46
2:B:190:ARG:O	2:B:193:PHE:HB3	2.15	0.46
2:B:288:VAL:O	2:B:288:VAL:HG13	2.14	0.46
2:B:519:ARG:O	2:B:523:PHE:CD2	2.69	0.46
2:G:519:ARG:O	2:G:523:PHE:CD2	2.69	0.46
2:E:366:ARG:O	2:E:369:PRO:HD2	2.16	0.46
1:A:109:VAL:HG23	1:A:113:LEU:HD12	1.98	0.46
2:C:111:TYR:HB2	2:C:177:SER:OG	2.16	0.46
2:C:344:ALA:O	2:E:342:LEU:HD23	2.15	0.46
2:G:288:VAL:HG13	2:G:288:VAL:O	2.14	0.46
2:E:242:ASP:OD2	2:E:245:GLY:HA2	2.16	0.46
2:E:519:ARG:O	2:E:523:PHE:CD2	2.69	0.46
2:G:111:TYR:HB2	2:G:177:SER:OG	2.16	0.46
2:G:528:LYS:HA	2:G:531:GLN:NE2	2.31	0.46
2:C:519:ARG:O	2:C:523:PHE:CD2	2.69	0.46
1:F:109:VAL:HG23	1:F:113:LEU:HD12	1.98	0.46
2:G:366:ARG:O	2:G:369:PRO:HD2	2.16	0.46
2:C:242:ASP:OD2	2:C:245:GLY:HA2	2.16	0.46
2:B:242:ASP:OD2	2:B:245:GLY:HA2	2.16	0.45
2:E:381:CYS:SG	2:E:382:TYR:N	2.90	0.45
2:G:242:ASP:OD2	2:G:245:GLY:HA2	2.16	0.45
1:H:109:VAL:HG23	1:H:113:LEU:HD12	1.98	0.45
2:G:166:PHE:HD2	2:G:167:PHE:CD1	2.35	0.45
2:G:381:CYS:SG	2:G:382:TYR:N	2.90	0.45
2:B:138:ILE:HG22	2:B:138:ILE:O	2.15	0.45

Continued on next page...

Continued from previous page...

Atom-1	Atom-2	Interatomic distance (Å)	Clash overlap (Å)
2:C:547:GLN:O	2:C:551:ASN:ND2	2.49	0.45
2:E:384:ALA:HB1	2:E:515:LYS:HG2	1.99	0.45
1:D:109:VAL:HG23	1:D:113:LEU:HD12	1.98	0.45
2:E:528:LYS:HA	2:E:531:GLN:NE2	2.31	0.45
2:E:547:GLN:O	2:E:551:ASN:ND2	2.49	0.45
2:G:547:GLN:O	2:G:551:ASN:ND2	2.49	0.45
2:B:381:CYS:SG	2:B:382:TYR:N	2.89	0.45
2:G:138:ILE:HG22	2:G:138:ILE:O	2.15	0.45
2:B:166:PHE:HD2	2:B:167:PHE:CD1	2.34	0.45
2:C:323:TRP:O	2:C:327:THR:OG1	2.25	0.45
2:C:381:CYS:O	2:C:384:ALA:HB2	2.17	0.45
2:C:381:CYS:SG	2:C:382:TYR:N	2.90	0.45
2:C:384:ALA:HB1	2:C:515:LYS:HG2	1.99	0.45
2:C:538:VAL:O	2:C:541:VAL:CG2	2.63	0.45
2:E:138:ILE:HG22	2:E:138:ILE:O	2.15	0.45
2:G:381:CYS:O	2:G:384:ALA:HB2	2.17	0.45
2:B:111:TYR:HB2	2:B:177:SER:OG	2.16	0.45
2:E:372:ALA:O	2:E:376:GLN:HG2	2.17	0.45
2:E:381:CYS:O	2:E:384:ALA:HB2	2.17	0.45
2:G:284:GLU:OE2	2:G:322:THR:OG1	2.28	0.45
2:G:372:ALA:O	2:G:376:GLN:HG2	2.17	0.45
2:B:547:GLN:O	2:B:551:ASN:ND2	2.49	0.45
2:C:289:ASN:N	2:C:293:ARG:O	2.47	0.45
2:B:366:ARG:O	2:B:369:PRO:HD2	2.16	0.45
2:E:343:PRO:O	2:E:347:LEU:HG	2.17	0.45
2:B:372:ALA:O	2:B:376:GLN:HG2	2.17	0.44
2:B:381:CYS:O	2:B:384:ALA:HB2	2.17	0.44
2:C:366:ARG:O	2:C:369:PRO:HD2	2.16	0.44
2:G:343:PRO:O	2:G:347:LEU:HG	2.17	0.44
2:B:343:PRO:O	2:B:347:LEU:HG	2.17	0.44
2:C:166:PHE:HD2	2:C:167:PHE:CD1	2.35	0.44
2:C:372:ALA:O	2:C:376:GLN:HG2	2.17	0.44
2:G:380:ARG:NH2	1:H:116:LYS:O	2.50	0.44
2:B:193:PHE:O	2:B:196:LYS:HG2	2.18	0.44
2:E:552:LEU:HD11	2:G:553:MET:HE1	1.99	0.44
2:B:289:ASN:N	2:B:293:ARG:O	2.47	0.44
2:B:360:ARG:O	2:B:363:HIS:N	2.51	0.44
2:C:511:ARG:HA	2:C:514:ILE:HG12	2.00	0.44
2:B:182:SER:O	2:B:185:VAL:HG12	2.18	0.44
2:B:384:ALA:HB1	2:B:515:LYS:HG2	1.99	0.44
2:B:528:LYS:HA	2:B:531:GLN:HG2	1.99	0.44

Continued on next page...

Continued from previous page...

Atom-1	Atom-2	Interatomic distance (Å)	Clash overlap (Å)
1:F:101:ILE:O	1:F:137:VAL:N	2.36	0.44
2:B:511:ARG:HA	2:B:514:ILE:HG12	2.00	0.44
2:G:364:PHE:N	2:G:364:PHE:CD1	2.85	0.44
2:C:343:PRO:O	2:C:347:LEU:HG	2.17	0.44
2:E:182:SER:O	2:E:185:VAL:HG12	2.18	0.44
2:G:360:ARG:O	2:G:363:HIS:N	2.51	0.44
2:G:511:ARG:HA	2:G:514:ILE:HG12	2.00	0.44
2:C:179:GLY:HA2	2:C:190:ARG:HH12	1.83	0.44
2:C:182:SER:O	2:C:185:VAL:HG12	2.18	0.44
2:E:166:PHE:HD2	2:E:167:PHE:CD1	2.35	0.44
2:B:310:VAL:O	2:B:310:VAL:HG22	2.18	0.44
2:C:528:LYS:O	2:C:531:GLN:HG2	2.18	0.44
2:E:364:PHE:CD1	2:E:364:PHE:N	2.85	0.44
2:E:512:ALA:O	2:E:516:VAL:HG23	2.18	0.44
2:E:528:LYS:HA	2:E:531:GLN:HG2	1.99	0.44
2:G:310:VAL:O	2:G:310:VAL:HG22	2.18	0.44
2:B:512:ALA:O	2:B:516:VAL:HG23	2.18	0.43
2:B:553:MET:HE1	2:G:552:LEU:HD11	1.99	0.43
2:E:310:VAL:O	2:E:310:VAL:HG22	2.18	0.43
2:E:511:ARG:HA	2:E:514:ILE:HG12	2.00	0.43
2:G:161:ILE:HA	2:G:164:VAL:HG12	2.00	0.43
2:G:182:SER:O	2:G:185:VAL:HG12	2.18	0.43
2:B:179:GLY:HA2	2:B:190:ARG:HH12	1.83	0.43
2:B:525:ALA:O	2:B:528:LYS:N	2.51	0.43
2:E:542:ILE:HG13	2:E:543:GLU:N	2.33	0.43
2:G:384:ALA:HB1	2:G:515:LYS:HG2	1.99	0.43
1:A:116:LYS:O	2:B:380:ARG:NH2	2.52	0.43
2:C:512:ALA:O	2:C:516:VAL:HG23	2.18	0.43
2:E:525:ALA:O	2:E:528:LYS:N	2.51	0.43
2:G:227:ILE:HG22	2:G:231:ARG:CZ	2.49	0.43
2:B:161:ILE:HA	2:B:164:VAL:HG12	2.00	0.43
2:C:227:ILE:HG22	2:C:231:ARG:CZ	2.49	0.43
2:C:528:LYS:HA	2:C:531:GLN:HG2	1.99	0.43
2:G:193:PHE:O	2:G:196:LYS:HG2	2.18	0.43
2:B:113:PHE:CE1	2:B:122:CYS:HB3	2.54	0.43
2:C:360:ARG:O	2:C:363:HIS:N	2.51	0.43
2:C:525:ALA:O	2:C:528:LYS:N	2.51	0.43
2:C:113:PHE:CE1	2:C:122:CYS:HB3	2.54	0.43
2:C:193:PHE:O	2:C:196:LYS:HG2	2.18	0.43
2:C:317:ASP:OD1	2:C:317:ASP:N	2.52	0.43
2:G:525:ALA:O	2:G:528:LYS:N	2.51	0.43

Continued on next page...

Continued from previous page...

Atom-1	Atom-2	Interatomic distance (Å)	Clash overlap (Å)
2:B:212:VAL:HG11	2:B:230:ILE:HD11	2.01	0.43
2:B:227:ILE:HG22	2:B:231:ARG:CZ	2.49	0.43
2:C:310:VAL:HG22	2:C:310:VAL:O	2.18	0.43
2:C:364:PHE:CD1	2:C:364:PHE:N	2.85	0.43
2:C:542:ILE:HG13	2:C:543:GLU:N	2.33	0.43
2:E:179:GLY:HA2	2:E:190:ARG:HH12	1.83	0.43
2:E:227:ILE:HG22	2:E:231:ARG:CZ	2.49	0.43
2:G:342:LEU:N	2:G:343:PRO:CD	2.81	0.43
2:G:528:LYS:HA	2:G:531:GLN:HG2	1.99	0.43
2:B:155:THR:HG23	2:B:156:LEU:HD12	2.00	0.43
2:B:342:LEU:HD23	2:G:344:ALA:O	2.18	0.43
2:B:342:LEU:N	2:B:343:PRO:CD	2.81	0.43
2:B:546:SER:OG	2:G:545:TYR:CE2	2.71	0.43
2:E:155:THR:HG23	2:E:156:LEU:HD12	2.00	0.43
2:E:193:PHE:O	2:E:196:LYS:HG2	2.18	0.43
2:G:109:ARG:O	2:G:112:ASN:OD1	2.37	0.43
2:G:512:ALA:O	2:G:516:VAL:HG23	2.18	0.43
2:B:109:ARG:O	2:B:112:ASN:OD1	2.37	0.43
2:B:198:ILE:HG12	2:B:243:ARG:NH2	2.34	0.43
2:B:528:LYS:O	2:B:531:GLN:HG2	2.18	0.43
2:C:109:ARG:O	2:C:112:ASN:OD1	2.37	0.43
2:C:545:TYR:CZ	2:E:546:SER:OG	2.72	0.43
2:C:552:LEU:HD11	2:E:553:MET:HE1	2.00	0.43
2:E:317:ASP:OD1	2:E:317:ASP:N	2.52	0.43
2:E:528:LYS:O	2:E:531:GLN:HG2	2.18	0.43
2:G:113:PHE:CE1	2:G:122:CYS:HB3	2.54	0.43
2:G:179:GLY:HA2	2:G:190:ARG:HH12	1.83	0.43
2:C:212:VAL:HG11	2:C:230:ILE:HD11	2.01	0.43
2:E:161:ILE:HA	2:E:164:VAL:HG12	2.00	0.43
2:E:342:LEU:N	2:E:343:PRO:CD	2.81	0.43
2:B:317:ASP:N	2:B:317:ASP:OD1	2.52	0.42
2:E:113:PHE:CE1	2:E:122:CYS:HB3	2.54	0.42
2:E:212:VAL:HG11	2:E:230:ILE:HD11	2.01	0.42
2:G:551:ASN:O	2:G:555:ARG:HD3	2.19	0.42
2:E:360:ARG:O	2:E:363:HIS:N	2.51	0.42
2:G:155:THR:HG23	2:G:156:LEU:HD12	2.00	0.42
2:C:155:THR:HG23	2:C:156:LEU:HD12	2.00	0.42
2:C:342:LEU:N	2:C:343:PRO:CD	2.81	0.42
2:E:533:ARG:O	2:E:533:ARG:HG2	2.19	0.42
2:B:164:VAL:HG13	2:B:165:VAL:N	2.35	0.42
2:B:539:ARG:O	2:B:543:GLU:HG3	2.19	0.42

Continued on next page...

Continued from previous page...

Atom-1	Atom-2	Interatomic distance (Å)	Clash overlap (Å)
2:E:109:ARG:O	2:E:112:ASN:OD1	2.37	0.42
2:G:212:VAL:HG11	2:G:230:ILE:HD11	2.01	0.42
2:G:539:ARG:O	2:G:543:GLU:HG3	2.19	0.42
2:B:551:ASN:O	2:B:555:ARG:HD3	2.19	0.42
2:C:161:ILE:HA	2:C:164:VAL:HG12	2.00	0.42
2:E:198:ILE:HG12	2:E:243:ARG:NH2	2.34	0.42
2:E:545:TYR:CZ	2:G:546:SER:OG	2.72	0.42
2:G:198:ILE:HG12	2:G:243:ARG:NH2	2.34	0.42
2:G:533:ARG:O	2:G:533:ARG:HG2	2.19	0.42
2:E:164:VAL:HG13	2:E:165:VAL:N	2.35	0.42
2:G:528:LYS:O	2:G:531:GLN:HG2	2.18	0.42
2:C:374:LEU:HD12	2:C:525:ALA:HB3	2.02	0.42
2:C:533:ARG:O	2:C:533:ARG:HG2	2.19	0.42
2:B:531:GLN:HA	2:B:534:LYS:HE3	2.02	0.42
2:C:164:VAL:HG13	2:C:165:VAL:N	2.35	0.42
2:E:539:ARG:O	2:E:543:GLU:HG3	2.19	0.42
2:G:542:ILE:HG13	2:G:543:GLU:N	2.33	0.42
2:B:364:PHE:O	2:B:367:GLN:HB3	2.20	0.42
2:B:542:ILE:HG13	2:B:543:GLU:N	2.33	0.42
2:E:551:ASN:O	2:E:555:ARG:HD3	2.19	0.42
2:G:364:PHE:O	2:G:367:GLN:HB3	2.20	0.42
1:A:139:TYR:CD2	1:A:140:GLU:N	2.88	0.42
2:B:533:ARG:O	2:B:533:ARG:HG2	2.19	0.42
2:G:289:ASN:N	2:G:293:ARG:O	2.47	0.42
2:C:551:ASN:O	2:C:555:ARG:HD3	2.19	0.41
1:D:139:TYR:CD2	1:D:140:GLU:N	2.88	0.41
2:E:541:VAL:O	2:E:545:TYR:HD2	2.03	0.41
2:B:541:VAL:O	2:B:545:TYR:HD2	2.03	0.41
2:C:539:ARG:O	2:C:543:GLU:HG3	2.19	0.41
1:F:113:LEU:N	1:F:116:LYS:HD2	2.35	0.41
1:F:139:TYR:CD2	1:F:140:GLU:N	2.88	0.41
2:C:198:ILE:HG12	2:C:243:ARG:NH2	2.34	0.41
2:C:541:VAL:O	2:C:545:TYR:HD2	2.03	0.41
2:E:364:PHE:O	2:E:367:GLN:HB3	2.20	0.41
1:H:139:TYR:CD2	1:H:140:GLU:N	2.88	0.41
1:A:29:THR:O	1:A:33:LEU:N	2.53	0.41
2:C:128:ALA:O	2:C:132:ILE:HG12	2.21	0.41
2:C:136:CYS:SG	2:C:234:GLN:OE1	2.78	0.41
2:C:531:GLN:HA	2:C:534:LYS:HE3	2.02	0.41
2:C:550:LEU:O	2:C:553:MET:HB2	2.21	0.41
2:E:128:ALA:O	2:E:132:ILE:HG12	2.21	0.41

Continued on next page...

Continued from previous page...

Atom-1	Atom-2	Interatomic distance (Å)	Clash overlap (Å)
2:E:136:CYS:SG	2:E:234:GLN:OE1	2.78	0.41
2:C:116:ARG:HH22	5:C:703:PIO:P5	2.44	0.41
2:C:364:PHE:O	2:C:367:GLN:HB3	2.20	0.41
2:G:164:VAL:HG13	2:G:165:VAL:N	2.35	0.41
1:H:113:LEU:N	1:H:116:LYS:HD2	2.35	0.41
2:B:364:PHE:N	2:B:364:PHE:CD1	2.85	0.41
2:C:215:VAL:HG13	2:C:216:GLY:N	2.36	0.41
2:C:255:VAL:O	2:C:258:HIS:N	2.54	0.41
2:E:116:ARG:HH22	5:E:902:PIO:P5	2.44	0.41
2:E:270:PHE:O	2:E:273:LEU:HB3	2.21	0.41
2:E:374:LEU:HD12	2:E:525:ALA:HB3	2.02	0.41
2:E:376:GLN:NE2	1:F:110:MET:HA	2.36	0.41
2:G:128:ALA:O	2:G:132:ILE:HG12	2.21	0.41
2:G:136:CYS:SG	2:G:234:GLN:OE1	2.78	0.41
2:G:270:PHE:O	2:G:273:LEU:HB3	2.21	0.41
2:G:311:THR:C	2:G:312:THR:HG1	2.19	0.41
1:A:101:ILE:O	1:A:137:VAL:N	2.35	0.41
1:A:117:LEU:HD23	2:B:380:ARG:NH2	2.36	0.41
2:B:116:ARG:HH22	5:B:705:PIO:P5	2.44	0.41
2:B:224:THR:CG2	2:B:225:SER:N	2.84	0.41
2:B:255:VAL:O	2:B:258:HIS:N	2.54	0.41
2:E:215:VAL:HG13	2:E:216:GLY:N	2.36	0.41
2:B:377:THR:HG21	2:B:522:TYR:N	2.36	0.41
2:E:224:THR:CG2	2:E:225:SER:N	2.84	0.41
2:G:374:LEU:HD12	2:G:525:ALA:HB3	2.02	0.41
2:G:541:VAL:O	2:G:545:TYR:HD2	2.03	0.41
2:B:270:PHE:O	2:B:273:LEU:HB3	2.21	0.40
2:C:165:VAL:HG13	2:C:166:PHE:N	2.36	0.40
2:E:550:LEU:O	2:E:553:MET:HB2	2.20	0.40
2:G:377:THR:HG21	2:G:522:TYR:N	2.36	0.40
2:B:374:LEU:HD12	2:B:525:ALA:HB3	2.02	0.40
2:C:224:THR:CG2	2:C:225:SER:N	2.84	0.40
2:E:289:ASN:N	2:E:293:ARG:O	2.47	0.40
2:E:377:THR:HG21	2:E:522:TYR:N	2.36	0.40
2:G:165:VAL:HG13	2:G:166:PHE:N	2.36	0.40
2:G:528:LYS:HA	2:G:531:GLN:HE21	1.87	0.40
2:G:531:GLN:HA	2:G:534:LYS:HE3	2.02	0.40
2:B:165:VAL:HG13	2:B:166:PHE:N	2.36	0.40
2:B:215:VAL:HG13	2:B:216:GLY:N	2.36	0.40
2:E:165:VAL:HG13	2:E:166:PHE:N	2.36	0.40
2:E:531:GLN:HA	2:E:534:LYS:HE3	2.02	0.40

Continued on next page...

Continued from previous page...

Atom-1	Atom-2	Interatomic distance (Å)	Clash overlap (Å)
1:F:66:PHE:O	1:F:66:PHE:CD2	2.75	0.40
2:G:116:ARG:HH22	5:G:902:PIO:P5	2.44	0.40
2:G:224:THR:CG2	2:G:225:SER:N	2.84	0.40
2:E:255:VAL:O	2:E:258:HIS:N	2.54	0.40
2:G:255:VAL:O	2:G:258:HIS:N	2.54	0.40
1:A:90:PHE:CE1	2:B:375:ILE:CD1	3.04	0.40
1:A:113:LEU:N	1:A:116:LYS:HD2	2.35	0.40
2:B:550:LEU:O	2:B:553:MET:HB2	2.21	0.40
2:C:360:ARG:O	2:C:363:HIS:HB3	2.22	0.40
1:D:29:THR:O	1:D:33:LEU:N	2.53	0.40
1:D:113:LEU:N	1:D:116:LYS:HD2	2.35	0.40
2:E:136:CYS:HG	2:E:234:GLN:CD	2.24	0.40
2:G:550:LEU:O	2:G:553:MET:HB2	2.21	0.40

There are no symmetry-related clashes.

5.3 Torsion angles

5.3.1 Protein backbone

In the following table, the Percentiles column shows the percent Ramachandran outliers of the chain as a percentile score with respect to all PDB entries followed by that with respect to all EM entries.

The Analysed column shows the number of residues for which the backbone conformation was analysed, and the total number of residues.

Mol	Chain	Analysed	Favoured	Allowed	Outliers	Percentiles	
1	A	142/177 (80%)	131 (92%)	11 (8%)	0	100	100
1	D	142/177 (80%)	131 (92%)	11 (8%)	0	100	100
1	F	142/177 (80%)	131 (92%)	11 (8%)	0	100	100
1	H	142/177 (80%)	131 (92%)	11 (8%)	0	100	100
2	B	324/692 (47%)	290 (90%)	34 (10%)	0	100	100
2	C	324/692 (47%)	292 (90%)	32 (10%)	0	100	100
2	E	324/692 (47%)	290 (90%)	34 (10%)	0	100	100
2	G	324/692 (47%)	290 (90%)	34 (10%)	0	100	100
All	All	1864/3476 (54%)	1686 (90%)	178 (10%)	0	100	100

There are no Ramachandran outliers to report.

5.3.2 Protein sidechains ⓘ

In the following table, the Percentiles column shows the percent sidechain outliers of the chain as a percentile score with respect to all PDB entries followed by that with respect to all EM entries.

The Analysed column shows the number of residues for which the sidechain conformation was analysed, and the total number of residues.

Mol	Chain	Analysed	Rotameric	Outliers	Percentiles	
1	A	31/146 (21%)	31 (100%)	0	100	100
1	D	31/146 (21%)	31 (100%)	0	100	100
1	F	31/146 (21%)	31 (100%)	0	100	100
1	H	31/146 (21%)	31 (100%)	0	100	100
2	B	279/579 (48%)	279 (100%)	0	100	100
2	C	279/579 (48%)	279 (100%)	0	100	100
2	E	279/579 (48%)	279 (100%)	0	100	100
2	G	279/579 (48%)	279 (100%)	0	100	100
All	All	1240/2900 (43%)	1240 (100%)	0	100	100

There are no protein residues with a non-rotameric sidechain to report.

Sometimes sidechains can be flipped to improve hydrogen bonding and reduce clashes. All (24) such sidechains are listed below:

Mol	Chain	Res	Type
1	A	108	HIS
2	B	258	HIS
2	B	363	HIS
2	B	510	HIS
2	B	531	GLN
2	B	551	ASN
2	C	258	HIS
2	C	363	HIS
2	C	376	GLN
2	C	531	GLN
2	C	551	ASN
1	D	108	HIS
2	E	258	HIS
2	E	363	HIS

Continued on next page...

Continued from previous page...

Mol	Chain	Res	Type
2	E	510	HIS
2	E	531	GLN
2	E	551	ASN
1	F	108	HIS
2	G	258	HIS
2	G	363	HIS
2	G	510	HIS
2	G	531	GLN
2	G	551	ASN
1	H	108	HIS

5.3.3 RNA ⓘ

There are no RNA molecules in this entry.

5.4 Non-standard residues in protein, DNA, RNA chains ⓘ

There are no non-standard protein/DNA/RNA residues in this entry.

5.5 Carbohydrates ⓘ

There are no monosaccharides in this entry.

5.6 Ligand geometry ⓘ

Of 12 ligands modelled in this entry, 4 are monoatomic - leaving 8 for Mogul analysis.

In the following table, the Counts columns list the number of bonds (or angles) for which Mogul statistics could be retrieved, the number of bonds (or angles) that are observed in the model and the number of bonds (or angles) that are defined in the Chemical Component Dictionary. The Link column lists molecule types, if any, to which the group is linked. The Z score for a bond length (or angle) is the number of standard deviations the observed value is removed from the expected value. A bond length (or angle) with $|Z| > 2$ is considered an outlier worth inspection. RMSZ is the root-mean-square of all Z scores of the bond lengths (or angles).

Mol	Type	Chain	Res	Link	Bond lengths			Bond angles		
					Counts	RMSZ	# Z > 2	Counts	RMSZ	# Z > 2
4	I0S	G	901	-	32,35,35	2.26	8 (25%)	43,50,50	2.01	7 (16%)
4	I0S	E	901	-	32,35,35	2.26	7 (21%)	43,50,50	2.01	7 (16%)
4	I0S	C	702	-	32,35,35	2.26	7 (21%)	43,50,50	2.01	7 (16%)

Mol	Type	Chain	Res	Link	Bond lengths			Bond angles		
					Counts	RMSZ	# Z > 2	Counts	RMSZ	# Z > 2
5	PIO	B	705	-	47,47,47	1.18	6 (12%)	61,65,65	1.12	4 (6%)
5	PIO	E	902	-	47,47,47	1.18	6 (12%)	61,65,65	1.12	4 (6%)
5	PIO	C	703	-	47,47,47	1.18	6 (12%)	61,65,65	1.12	4 (6%)
5	PIO	G	902	-	47,47,47	1.18	6 (12%)	61,65,65	1.12	4 (6%)
4	I0S	B	704	-	32,35,35	2.26	7 (21%)	43,50,50	2.01	7 (16%)

In the following table, the Chirals column lists the number of chiral outliers, the number of chiral centers analysed, the number of these observed in the model and the number defined in the Chemical Component Dictionary. Similar counts are reported in the Torsion and Rings columns. '-' means no outliers of that kind were identified.

Mol	Type	Chain	Res	Link	Chirals	Torsions	Rings
4	I0S	G	901	-	-	1/24/37/37	0/4/4/4
4	I0S	E	901	-	-	1/24/37/37	0/4/4/4
4	I0S	C	702	-	-	1/24/37/37	0/4/4/4
5	PIO	B	705	-	-	18/44/68/68	0/1/1/1
5	PIO	E	902	-	-	18/44/68/68	0/1/1/1
5	PIO	C	703	-	-	18/44/68/68	0/1/1/1
5	PIO	G	902	-	-	18/44/68/68	0/1/1/1
4	I0S	B	704	-	-	1/24/37/37	0/4/4/4

All (53) bond length outliers are listed below:

Mol	Chain	Res	Type	Atoms	Z	Observed(Å)	Ideal(Å)
4	E	901	I0S	CBE-SBF	-7.45	1.58	1.70
4	C	702	I0S	CBE-SBF	-7.40	1.58	1.70
4	G	901	I0S	CBE-SBF	-7.40	1.58	1.70
4	B	704	I0S	CBE-SBF	-7.37	1.59	1.70
4	B	704	I0S	SAI-N	4.02	1.69	1.63
4	C	702	I0S	CAE-CB	-4.00	1.42	1.53
4	B	704	I0S	CAE-CB	-3.99	1.42	1.53
4	E	901	I0S	CAE-CB	-3.98	1.42	1.53
4	G	901	I0S	CAE-CB	-3.98	1.42	1.53
4	G	901	I0S	SAI-N	3.98	1.69	1.63
4	C	702	I0S	SAI-N	3.97	1.69	1.63
4	E	901	I0S	SAI-N	3.96	1.69	1.63
4	B	704	I0S	CAT-NAS	3.34	1.42	1.36
4	G	901	I0S	CAT-NAS	3.31	1.42	1.36
4	E	901	I0S	CAT-NAS	3.29	1.42	1.36
4	C	702	I0S	CAT-NAS	3.28	1.42	1.36

Continued on next page...

Continued from previous page...

Mol	Chain	Res	Type	Atoms	Z	Observed(Å)	Ideal(Å)
4	B	704	I0S	O-C	-3.28	1.16	1.23
4	C	702	I0S	O-C	-3.26	1.16	1.23
4	E	901	I0S	O-C	-3.25	1.16	1.23
4	G	901	I0S	O-C	-3.24	1.16	1.23
5	B	705	PIO	P4-O4	3.15	1.65	1.59
5	C	703	PIO	P4-O4	3.14	1.65	1.59
5	G	902	PIO	P4-O4	3.14	1.65	1.59
5	E	902	PIO	P4-O4	3.10	1.65	1.59
4	G	901	I0S	C-NAS	3.07	1.42	1.35
5	E	902	PIO	P5-O5	3.07	1.65	1.59
5	G	902	PIO	P5-O5	3.07	1.65	1.59
4	B	704	I0S	C-NAS	3.06	1.42	1.35
5	B	705	PIO	P5-O5	3.05	1.65	1.59
4	C	702	I0S	C-NAS	3.05	1.42	1.35
4	E	901	I0S	C-NAS	3.04	1.42	1.35
5	C	703	PIO	P5-O5	3.03	1.65	1.59
5	G	902	PIO	O2C-C2C	-2.58	1.40	1.46
5	B	705	PIO	O2C-C2C	-2.55	1.40	1.46
5	C	703	PIO	O2C-C2C	-2.54	1.40	1.46
5	E	902	PIO	O2C-C2C	-2.54	1.40	1.46
5	C	703	PIO	O3C-C3C	-2.49	1.39	1.45
5	E	902	PIO	O3C-C3C	-2.48	1.39	1.45
5	G	902	PIO	O3C-C3C	-2.48	1.39	1.45
5	B	705	PIO	O3C-C3C	-2.47	1.39	1.45
5	B	705	PIO	O3C-C1B	2.30	1.40	1.33
5	C	703	PIO	O3C-C1B	2.29	1.40	1.33
4	G	901	I0S	CAF-CAE	-2.29	1.42	1.51
4	B	704	I0S	CAF-CAE	-2.29	1.42	1.51
5	E	902	PIO	O3C-C1B	2.28	1.40	1.33
5	G	902	PIO	O3C-C1B	2.28	1.40	1.33
4	C	702	I0S	CAF-CAE	-2.27	1.42	1.51
4	E	901	I0S	CAF-CAE	-2.27	1.42	1.51
5	B	705	PIO	O2C-C1A	2.12	1.40	1.34
5	C	703	PIO	O2C-C1A	2.11	1.40	1.34
5	G	902	PIO	O2C-C1A	2.11	1.40	1.34
5	E	902	PIO	O2C-C1A	2.10	1.40	1.34
4	G	901	I0S	CAJ-SAI	2.04	1.79	1.76

All (44) bond angle outliers are listed below:

Mol	Chain	Res	Type	Atoms	Z	Observed(°)	Ideal(°)
4	E	901	I0S	OAR-SAI-OAQ	-9.82	103.60	119.52

Continued on next page...

Continued from previous page...

Mol	Chain	Res	Type	Atoms	Z	Observed(°)	Ideal(°)
4	G	901	I0S	OAR-SAI-OAQ	-9.82	103.61	119.52
4	B	704	I0S	OAR-SAI-OAQ	-9.81	103.62	119.52
4	C	702	I0S	OAR-SAI-OAQ	-9.81	103.62	119.52
5	B	705	PIO	O2C-C1A-C2A	4.19	120.53	111.50
5	C	703	PIO	O2C-C1A-C2A	4.19	120.53	111.50
5	E	902	PIO	O2C-C1A-C2A	4.19	120.52	111.50
5	G	902	PIO	O2C-C1A-C2A	4.17	120.49	111.50
5	B	705	PIO	C5-C6-C1	3.71	116.66	108.96
5	E	902	PIO	C5-C6-C1	3.71	116.65	108.96
5	C	703	PIO	C5-C6-C1	3.69	116.62	108.96
5	G	902	PIO	C5-C6-C1	3.69	116.62	108.96
5	G	902	PIO	C6-C1-C2	3.29	115.60	110.85
5	B	705	PIO	C6-C1-C2	3.28	115.58	110.85
5	E	902	PIO	C6-C1-C2	3.27	115.57	110.85
5	C	703	PIO	C6-C1-C2	3.27	115.56	110.85
4	C	702	I0S	OAQ-SAI-CAJ	2.99	111.83	108.05
4	B	704	I0S	OAQ-SAI-CAJ	2.99	111.83	108.05
4	G	901	I0S	OAQ-SAI-CAJ	2.97	111.81	108.05
4	E	901	I0S	OAQ-SAI-CAJ	2.96	111.79	108.05
4	G	901	I0S	OAQ-SAI-N	2.84	112.15	106.97
4	E	901	I0S	OAQ-SAI-N	2.84	112.14	106.97
4	C	702	I0S	OAQ-SAI-N	2.83	112.14	106.97
4	B	704	I0S	OAQ-SAI-N	2.81	112.10	106.97
4	C	702	I0S	CAG-N-CA	-2.69	107.76	114.64
4	B	704	I0S	CAG-N-CA	-2.69	107.77	114.64
4	E	901	I0S	CAG-N-CA	-2.68	107.80	114.64
4	G	901	I0S	CAG-N-CA	-2.67	107.81	114.64
4	E	901	I0S	CB-CA-C	-2.53	107.52	112.12
4	G	901	I0S	CB-CA-C	-2.53	107.53	112.12
4	B	704	I0S	CAF-CAG-N	2.53	114.01	110.31
4	C	702	I0S	CAF-CAG-N	2.52	114.01	110.31
4	C	702	I0S	CB-CA-C	-2.52	107.54	112.12
4	B	704	I0S	CB-CA-C	-2.52	107.55	112.12
4	E	901	I0S	CAF-CAG-N	2.51	113.99	110.31
4	G	901	I0S	CAF-CAG-N	2.50	113.98	110.31
5	E	902	PIO	O3C-C1B-C2B	2.44	119.58	111.91
5	G	902	PIO	O3C-C1B-C2B	2.44	119.58	111.91
5	B	705	PIO	O3C-C1B-C2B	2.43	119.53	111.91
5	C	703	PIO	O3C-C1B-C2B	2.43	119.53	111.91
4	B	704	I0S	CAT-NAS-C	-2.19	124.15	129.02
4	G	901	I0S	CAT-NAS-C	-2.15	124.23	129.02
4	C	702	I0S	CAT-NAS-C	-2.15	124.23	129.02

Continued on next page...

Continued from previous page...

Mol	Chain	Res	Type	Atoms	Z	Observed(°)	Ideal(°)
4	E	901	I0S	CAT-NAS-C	-2.14	124.26	129.02

There are no chirality outliers.

All (76) torsion outliers are listed below:

Mol	Chain	Res	Type	Atoms
5	B	705	PIO	C5-C4-O4-P4
5	B	705	PIO	O1A-C1A-O2C-C2C
5	B	705	PIO	C2A-C1A-O2C-C2C
5	C	703	PIO	C5-C4-O4-P4
5	C	703	PIO	O1A-C1A-O2C-C2C
5	C	703	PIO	C2A-C1A-O2C-C2C
5	E	902	PIO	C5-C4-O4-P4
5	E	902	PIO	O1A-C1A-O2C-C2C
5	E	902	PIO	C2A-C1A-O2C-C2C
5	G	902	PIO	C5-C4-O4-P4
5	G	902	PIO	O1A-C1A-O2C-C2C
5	G	902	PIO	C2A-C1A-O2C-C2C
5	B	705	PIO	O1B-C1B-O3C-C3C
5	C	703	PIO	O1B-C1B-O3C-C3C
5	E	902	PIO	O1B-C1B-O3C-C3C
5	G	902	PIO	O1B-C1B-O3C-C3C
5	B	705	PIO	C2B-C1B-O3C-C3C
5	C	703	PIO	C2B-C1B-O3C-C3C
5	E	902	PIO	C2B-C1B-O3C-C3C
5	G	902	PIO	C2B-C1B-O3C-C3C
5	B	705	PIO	O2C-C2C-C3C-O3C
5	C	703	PIO	O2C-C2C-C3C-O3C
5	E	902	PIO	O2C-C2C-C3C-O3C
5	G	902	PIO	O2C-C2C-C3C-O3C
5	B	705	PIO	C3B-C4B-C5B-C6B
5	C	703	PIO	C3B-C4B-C5B-C6B
5	E	902	PIO	C3B-C4B-C5B-C6B
5	G	902	PIO	C3B-C4B-C5B-C6B
5	B	705	PIO	C1C-C2C-C3C-O3C
5	C	703	PIO	C1C-C2C-C3C-O3C
5	E	902	PIO	C1C-C2C-C3C-O3C
5	G	902	PIO	C1C-C2C-C3C-O3C
5	B	705	PIO	C2B-C3B-C4B-C5B
5	C	703	PIO	C2B-C3B-C4B-C5B
5	E	902	PIO	C2B-C3B-C4B-C5B
5	G	902	PIO	C2B-C3B-C4B-C5B

Continued on next page...

Continued from previous page...

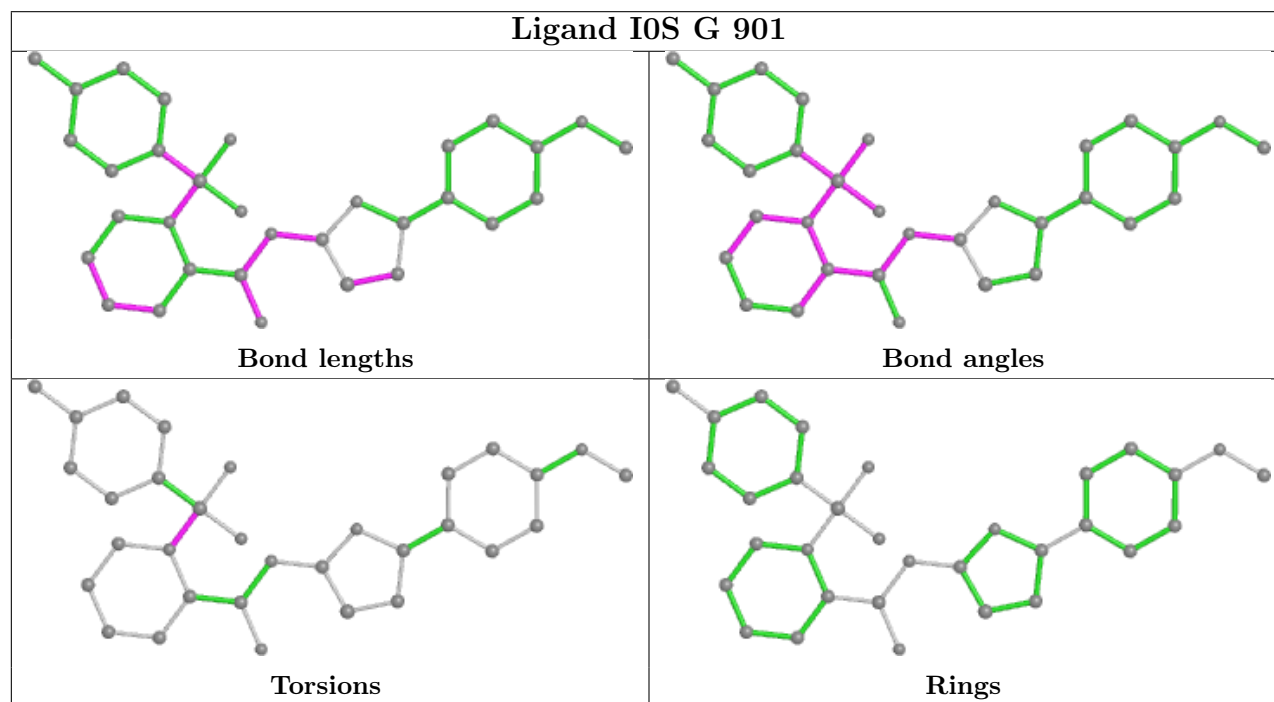
Mol	Chain	Res	Type	Atoms
5	B	705	PIO	C4-C5-O5-P5
5	C	703	PIO	C4-C5-O5-P5
5	E	902	PIO	C4-C5-O5-P5
5	G	902	PIO	C4-C5-O5-P5
5	E	902	PIO	C5B-C6B-C7B-C8B
5	G	902	PIO	C5B-C6B-C7B-C8B
5	B	705	PIO	C5B-C6B-C7B-C8B
5	C	703	PIO	C5B-C6B-C7B-C8B
5	B	705	PIO	C5-O5-P5-O53
5	C	703	PIO	C5-O5-P5-O53
5	E	902	PIO	C5-O5-P5-O53
5	G	902	PIO	C5-O5-P5-O53
5	B	705	PIO	C1C-O13-P1-O12
5	C	703	PIO	C1C-O13-P1-O12
5	E	902	PIO	C1C-O13-P1-O12
5	G	902	PIO	C1C-O13-P1-O12
5	B	705	PIO	C2C-C1C-O13-P1
5	C	703	PIO	C2C-C1C-O13-P1
5	E	902	PIO	C2C-C1C-O13-P1
5	G	902	PIO	C2C-C1C-O13-P1
5	E	902	PIO	C5A-C6A-C7A-C8A
5	B	705	PIO	C5A-C6A-C7A-C8A
5	C	703	PIO	C5A-C6A-C7A-C8A
5	G	902	PIO	C5A-C6A-C7A-C8A
4	B	704	I0S	CA-N-SAI-OAQ
4	C	702	I0S	CA-N-SAI-OAQ
4	E	901	I0S	CA-N-SAI-OAQ
4	G	901	I0S	CA-N-SAI-OAQ
5	B	705	PIO	C3-C4-O4-P4
5	B	705	PIO	C4-O4-P4-O43
5	B	705	PIO	C6-C5-O5-P5
5	C	703	PIO	C3-C4-O4-P4
5	C	703	PIO	C4-O4-P4-O43
5	C	703	PIO	C6-C5-O5-P5
5	E	902	PIO	C3-C4-O4-P4
5	E	902	PIO	C4-O4-P4-O43
5	E	902	PIO	C6-C5-O5-P5
5	G	902	PIO	C3-C4-O4-P4
5	G	902	PIO	C4-O4-P4-O43
5	G	902	PIO	C6-C5-O5-P5

There are no ring outliers.

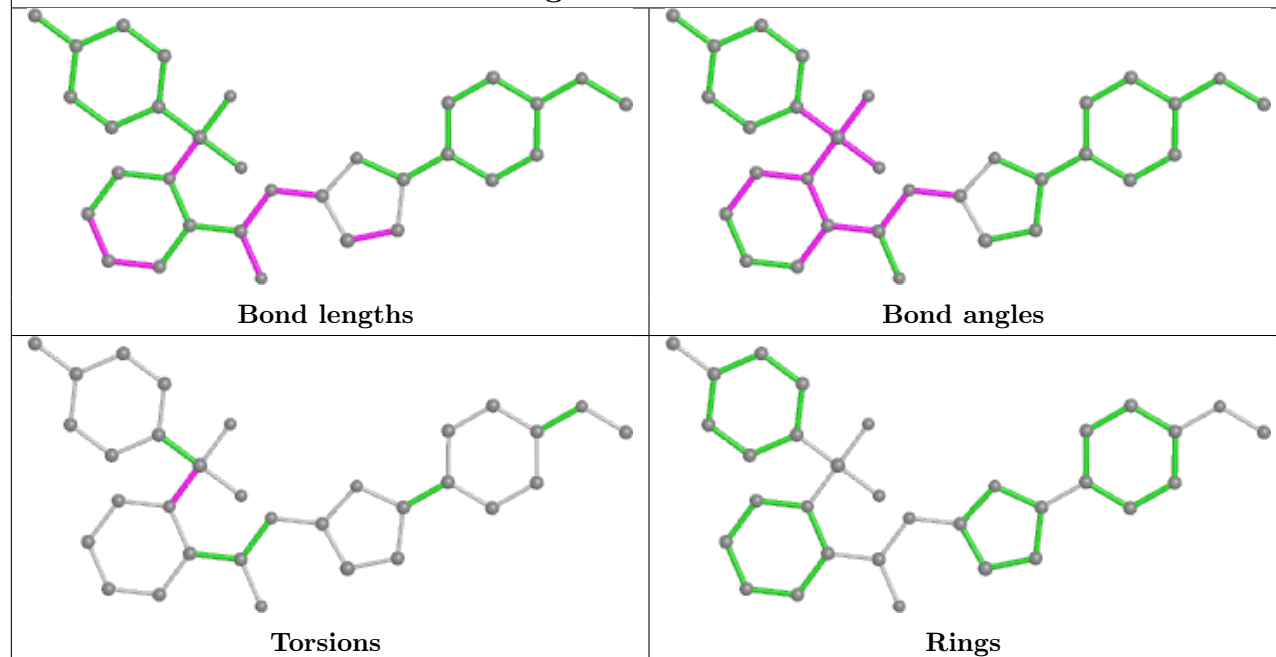
4 monomers are involved in 10 short contacts:

Mol	Chain	Res	Type	Clashes	Symm-Clashes
5	B	705	PIO	2	0
5	E	902	PIO	2	0
5	C	703	PIO	3	0
5	G	902	PIO	3	0

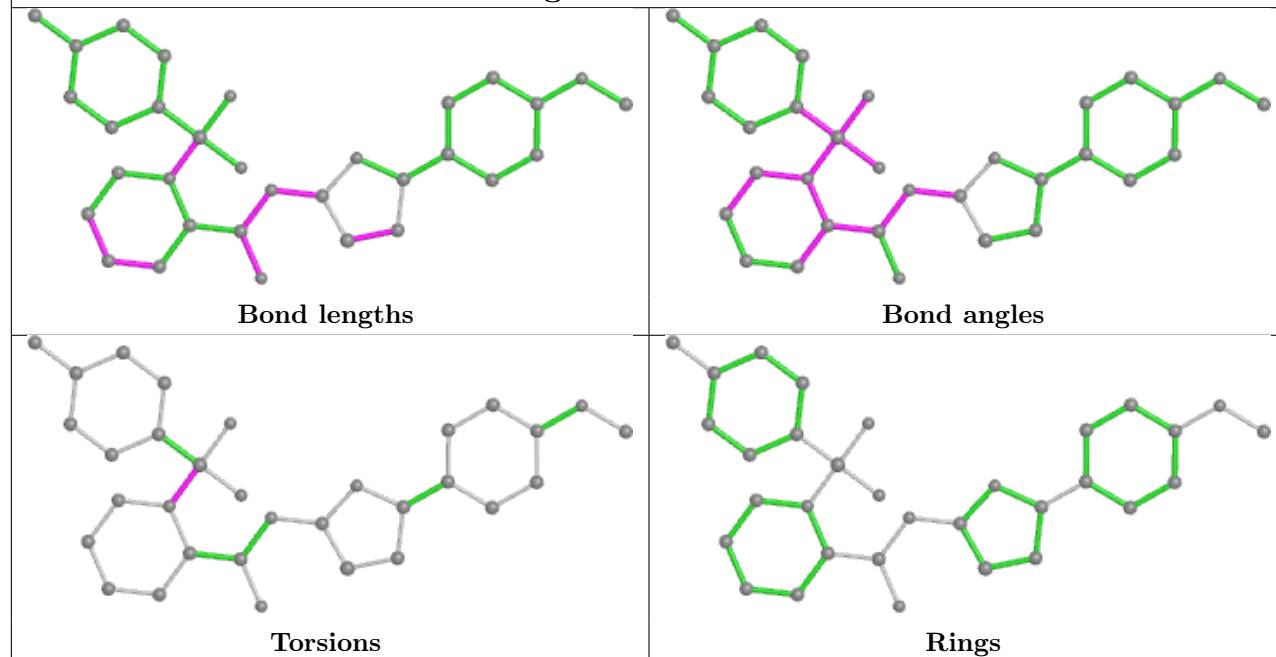
The following is a two-dimensional graphical depiction of Mogul quality analysis of bond lengths, bond angles, torsion angles, and ring geometry for all instances of the Ligand of Interest. In addition, ligands with molecular weight > 250 and outliers as shown on the validation Tables will also be included. For torsion angles, if less than 5% of the Mogul distribution of torsion angles is within 10 degrees of the torsion angle in question, then that torsion angle is considered an outlier. Any bond that is central to one or more torsion angles identified as an outlier by Mogul will be highlighted in the graph. For rings, the root-mean-square deviation (RMSD) between the ring in question and similar rings identified by Mogul is calculated over all ring torsion angles. If the average RMSD is greater than 60 degrees and the minimal RMSD between the ring in question and any Mogul-identified rings is also greater than 60 degrees, then that ring is considered an outlier. The outliers are highlighted in purple. The color gray indicates Mogul did not find sufficient equivalents in the CSD to analyse the geometry.



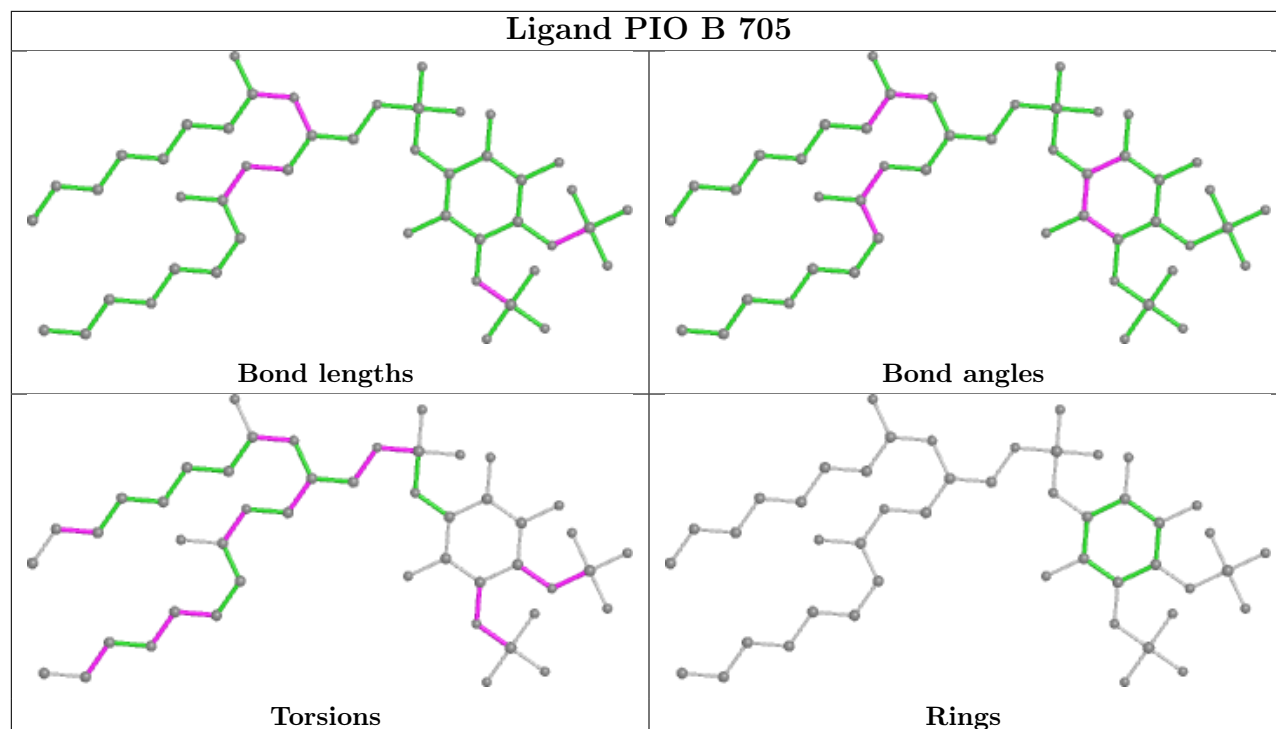
Ligand IOS E 901



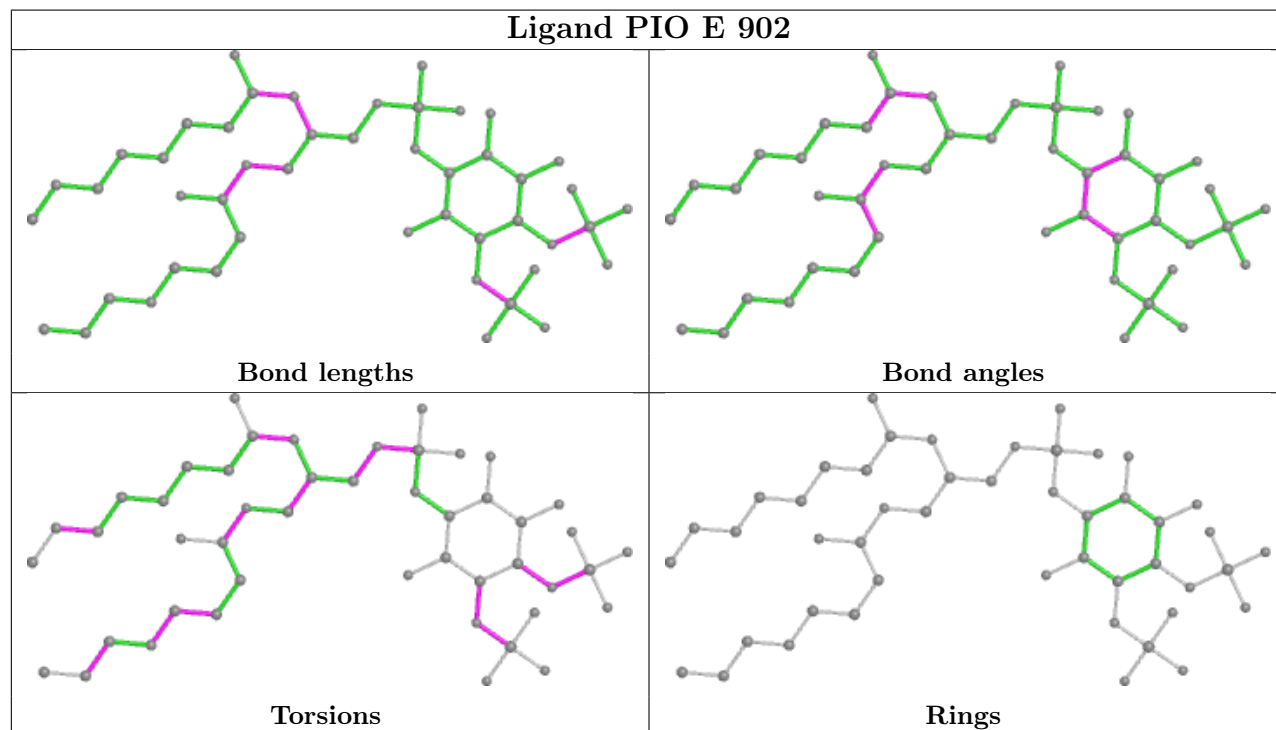
Ligand IOS C 702



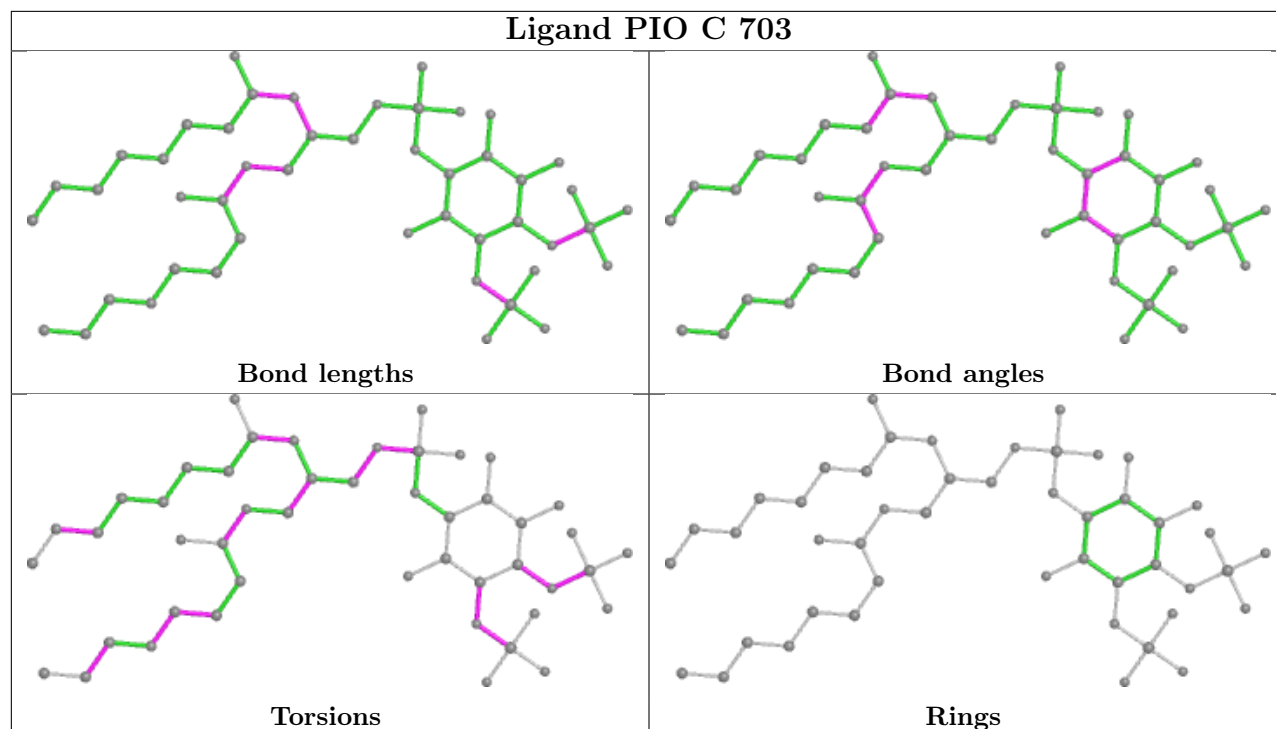
Ligand PIO B 705



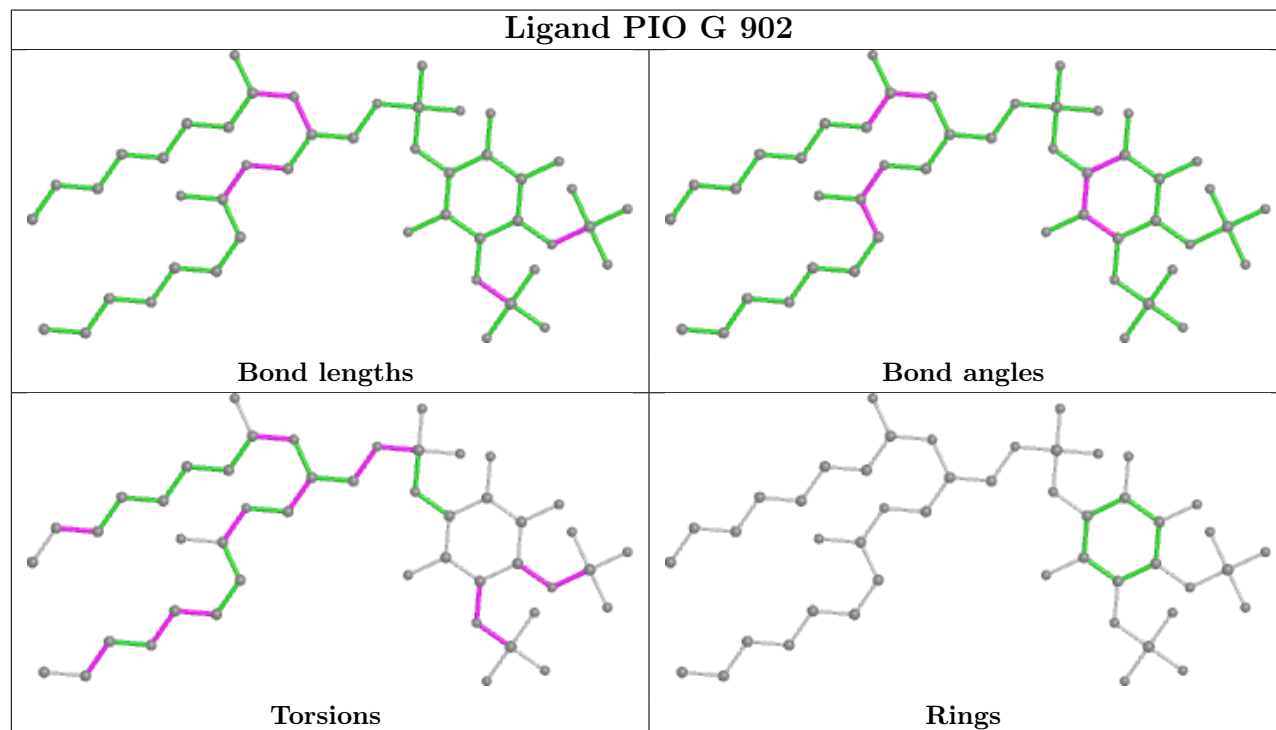
Ligand PIO E 902

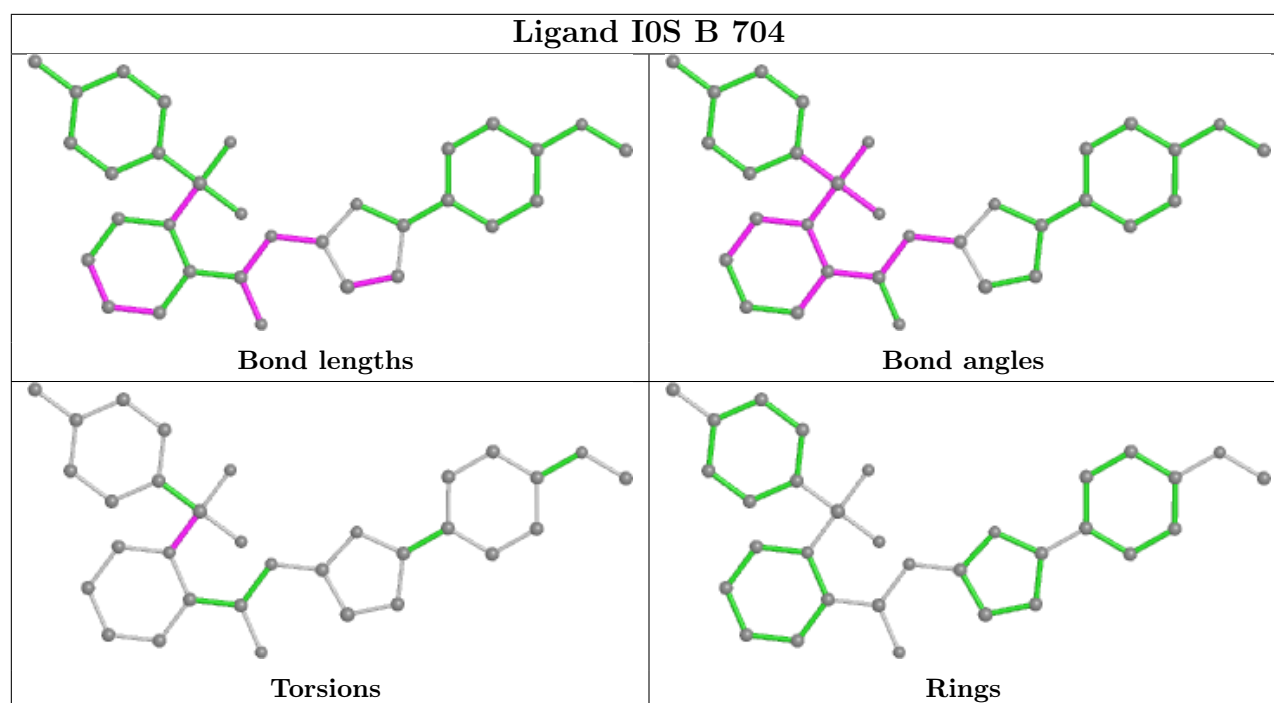


Ligand PIO C 703



Ligand PIO G 902





5.7 Other polymers [i](#)

There are no such residues in this entry.

5.8 Polymer linkage issues [i](#)

There are no chain breaks in this entry.

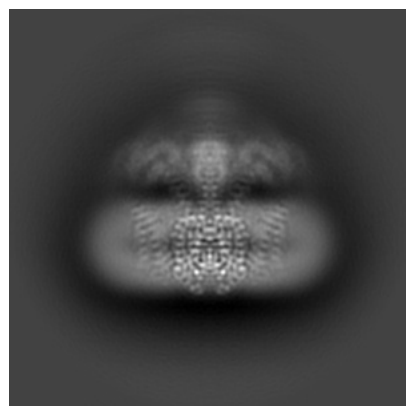
6 Map visualisation [i](#)

This section contains visualisations of the EMDB entry EMD-33319. These allow visual inspection of the internal detail of the map and identification of artifacts.

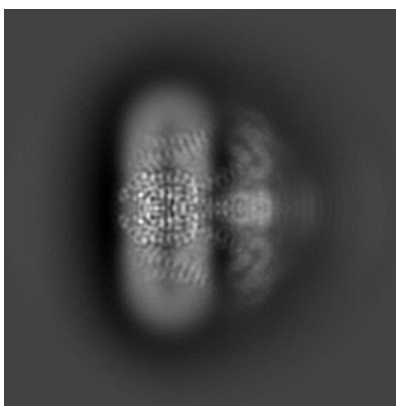
Images derived from a raw map, generated by summing the deposited half-maps, are presented below the corresponding image components of the primary map to allow further visual inspection and comparison with those of the primary map.

6.1 Orthogonal projections [i](#)

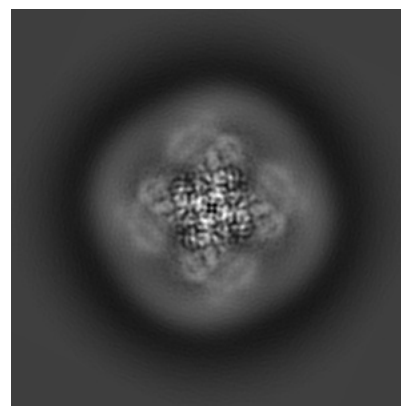
6.1.1 Primary map



X

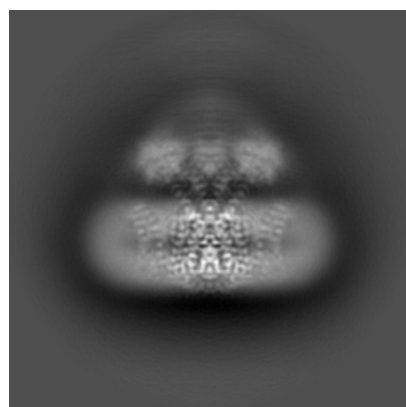


Y

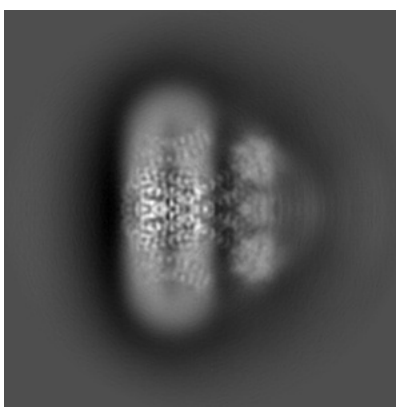


Z

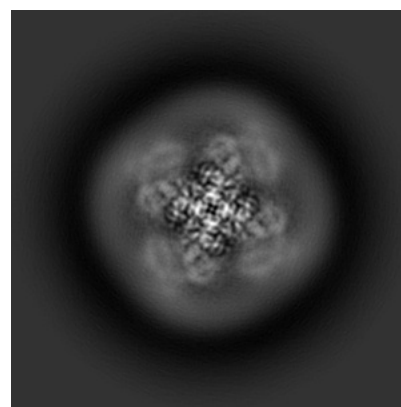
6.1.2 Raw map



X



Y

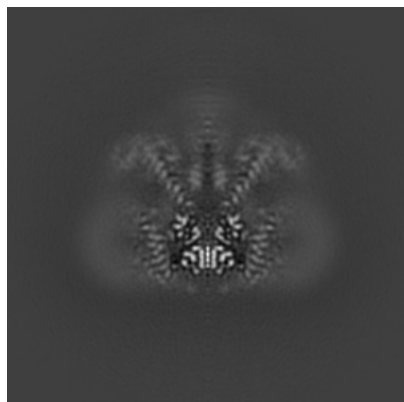


Z

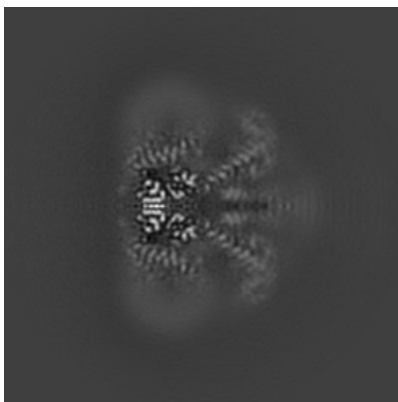
The images above show the map projected in three orthogonal directions.

6.2 Central slices [i](#)

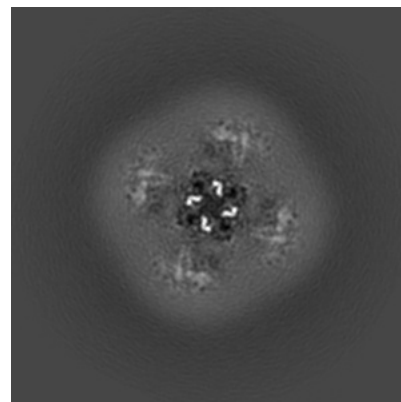
6.2.1 Primary map



X Index: 120

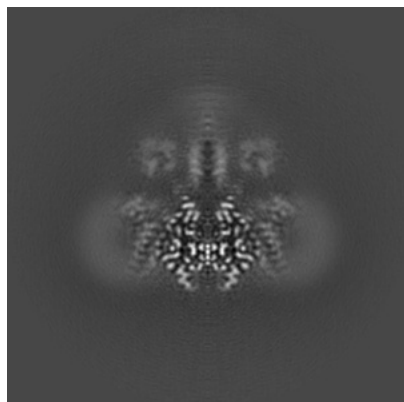


Y Index: 120

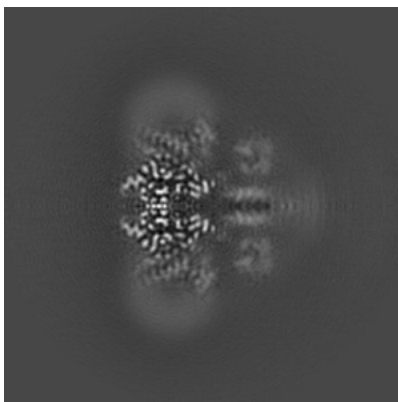


Z Index: 120

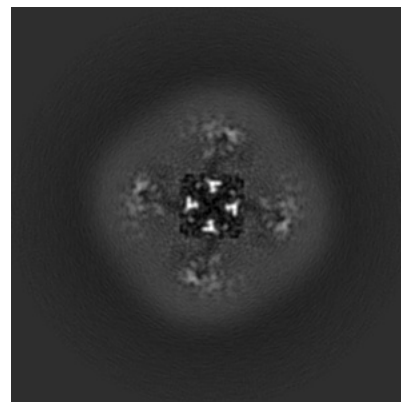
6.2.2 Raw map



X Index: 120



Y Index: 120

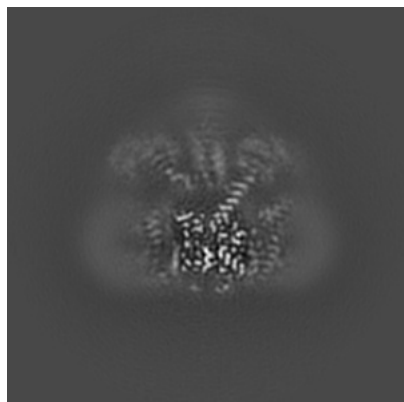


Z Index: 120

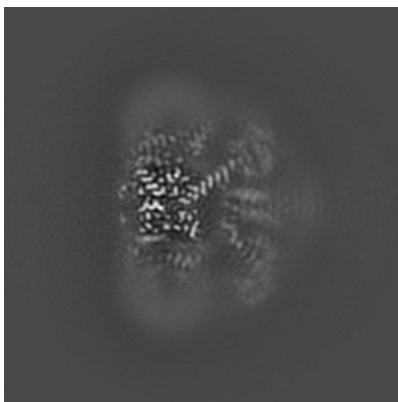
The images above show central slices of the map in three orthogonal directions.

6.3 Largest variance slices [i](#)

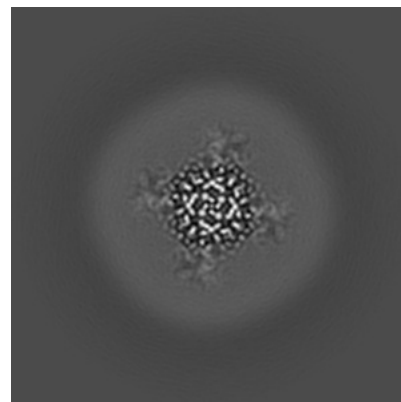
6.3.1 Primary map



X Index: 124

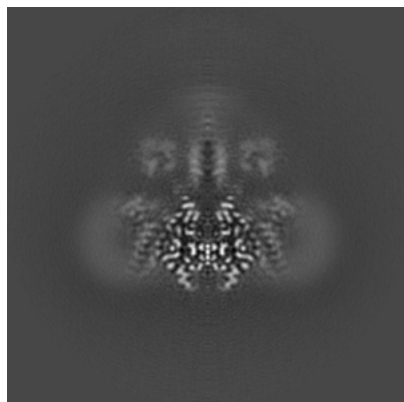


Y Index: 116

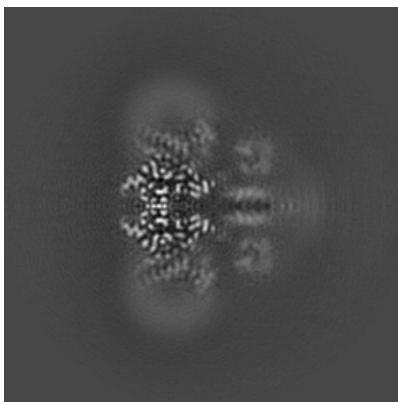


Z Index: 86

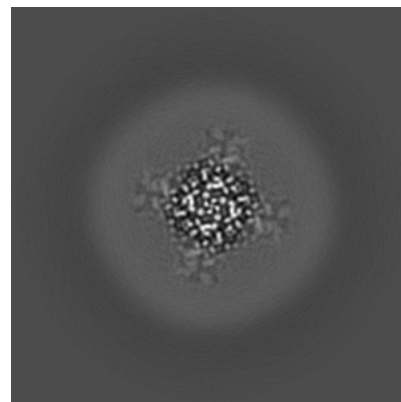
6.3.2 Raw map



X Index: 120



Y Index: 120

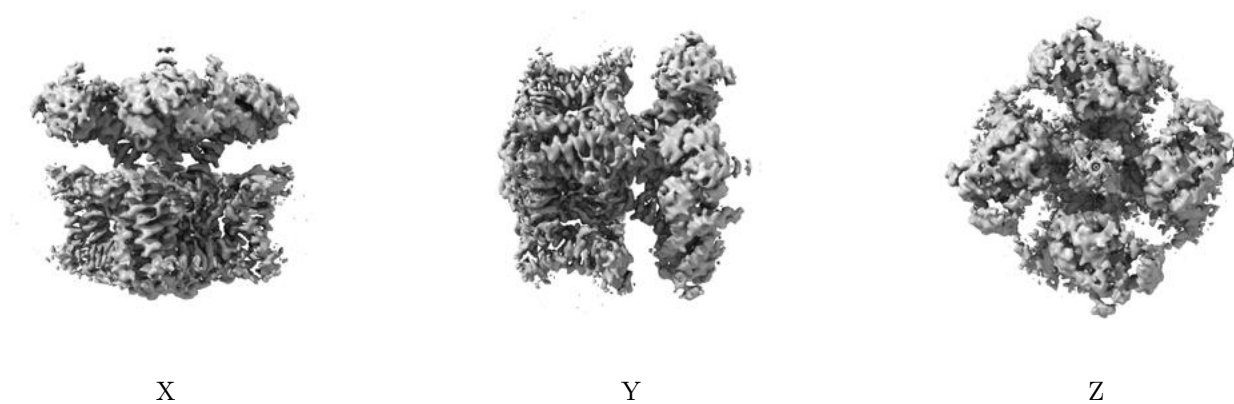


Z Index: 88

The images above show the largest variance slices of the map in three orthogonal directions.

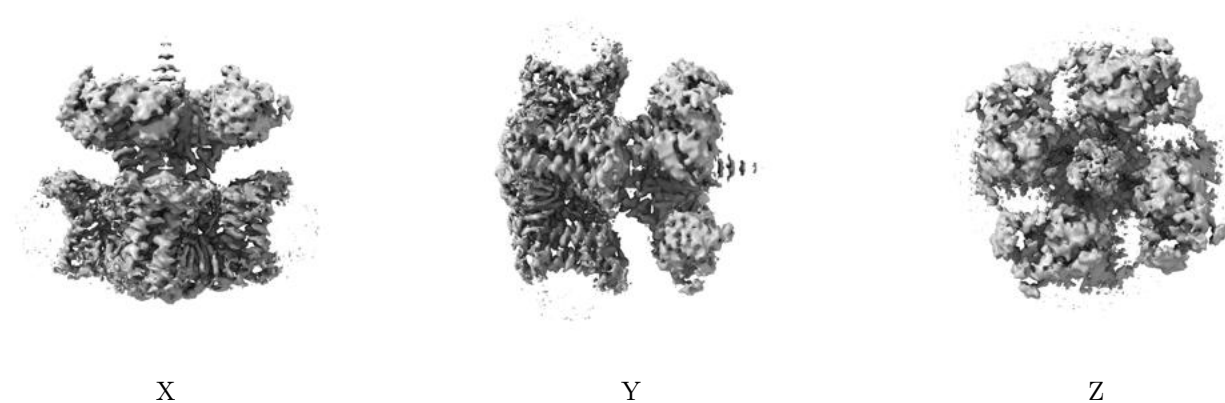
6.4 Orthogonal surface views [i](#)

6.4.1 Primary map



The images above show the 3D surface view of the map at the recommended contour level 0.0081. These images, in conjunction with the slice images, may facilitate assessment of whether an appropriate contour level has been provided.

6.4.2 Raw map



These images show the 3D surface of the raw map. The raw map's contour level was selected so that its surface encloses the same volume as the primary map does at its recommended contour level.

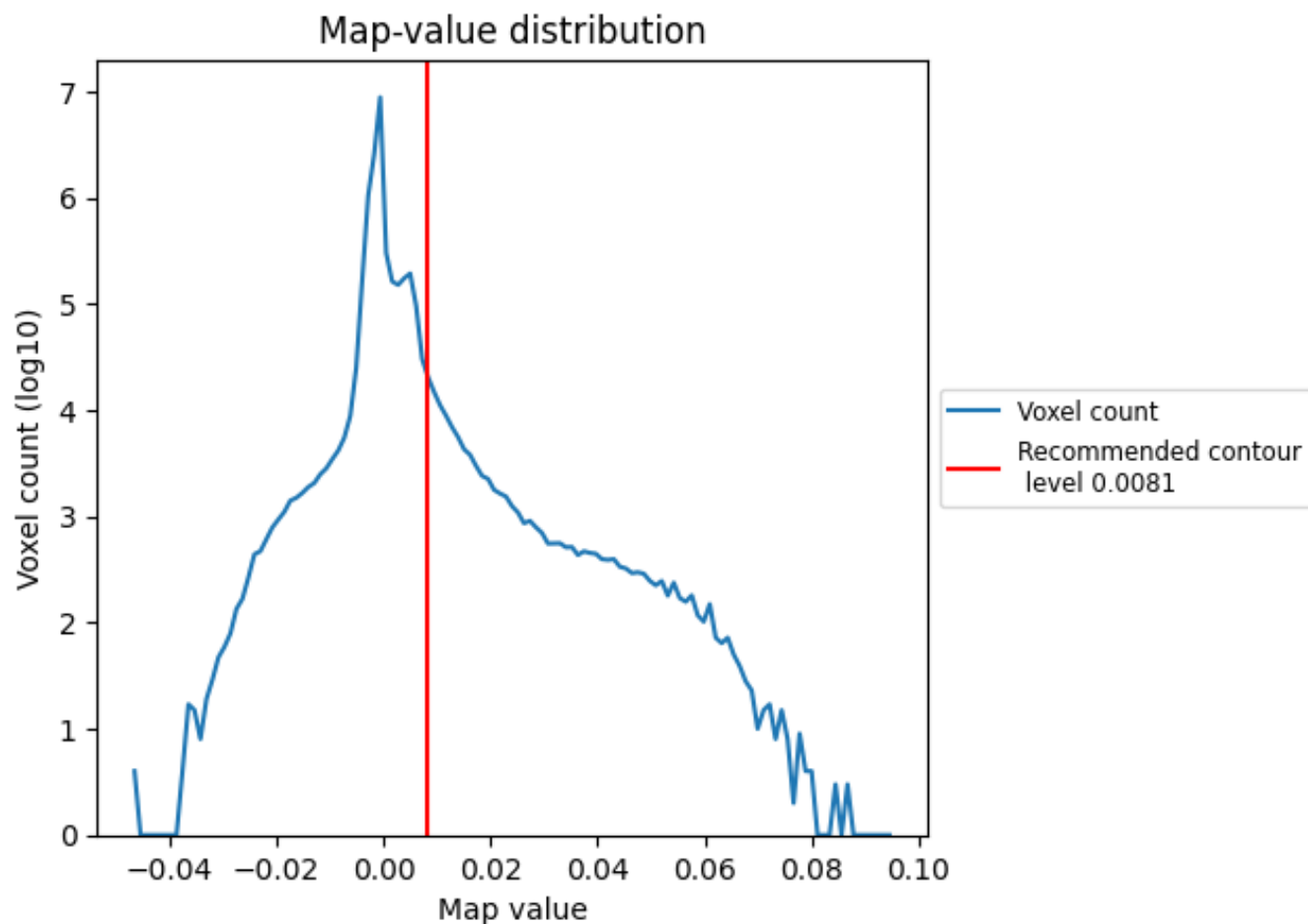
6.5 Mask visualisation [i](#)

This section was not generated. No masks/segmentation were deposited.

7 Map analysis [i](#)

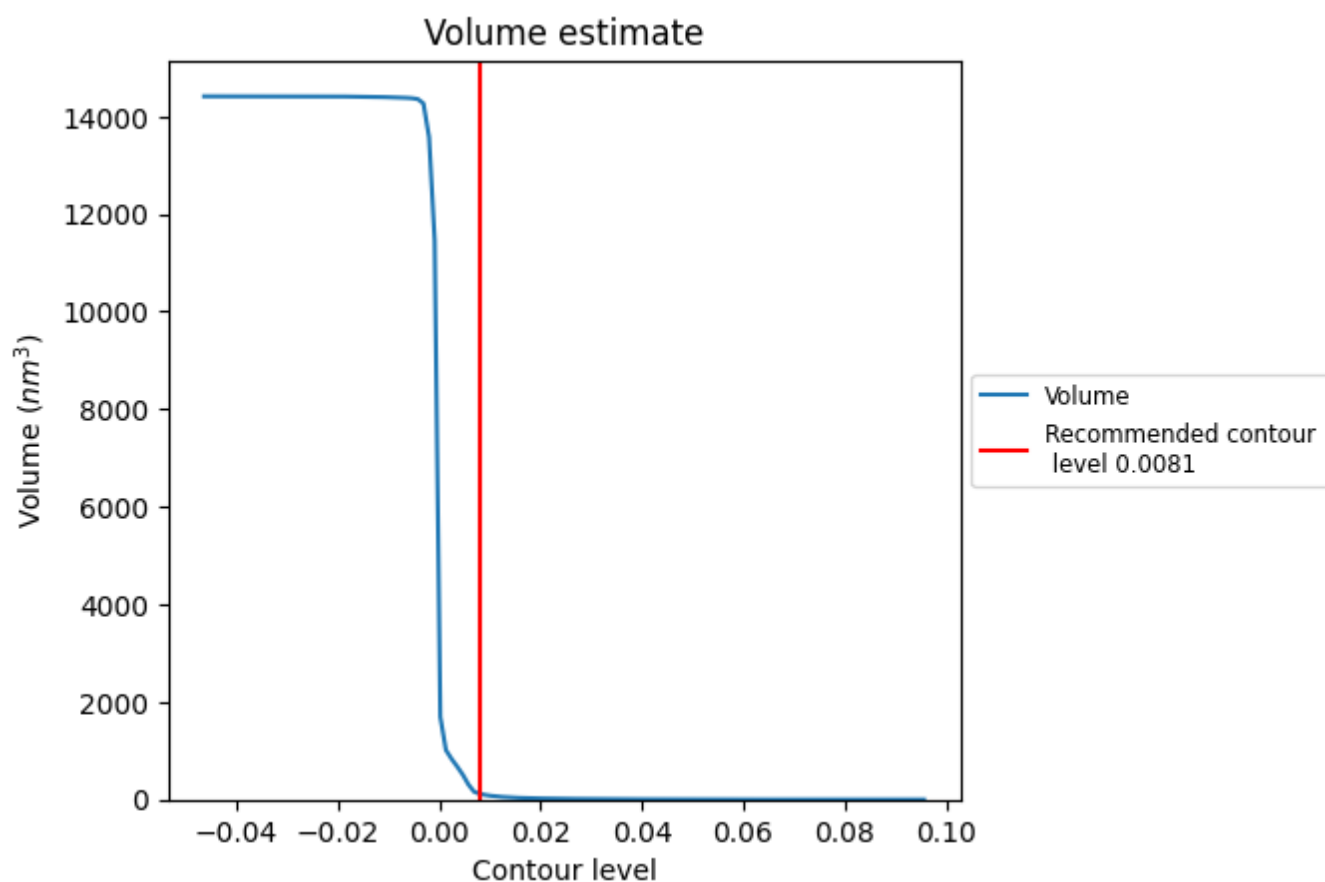
This section contains the results of statistical analysis of the map.

7.1 Map-value distribution [i](#)



The map-value distribution is plotted in 128 intervals along the x-axis. The y-axis is logarithmic. A spike in this graph at zero usually indicates that the volume has been masked.

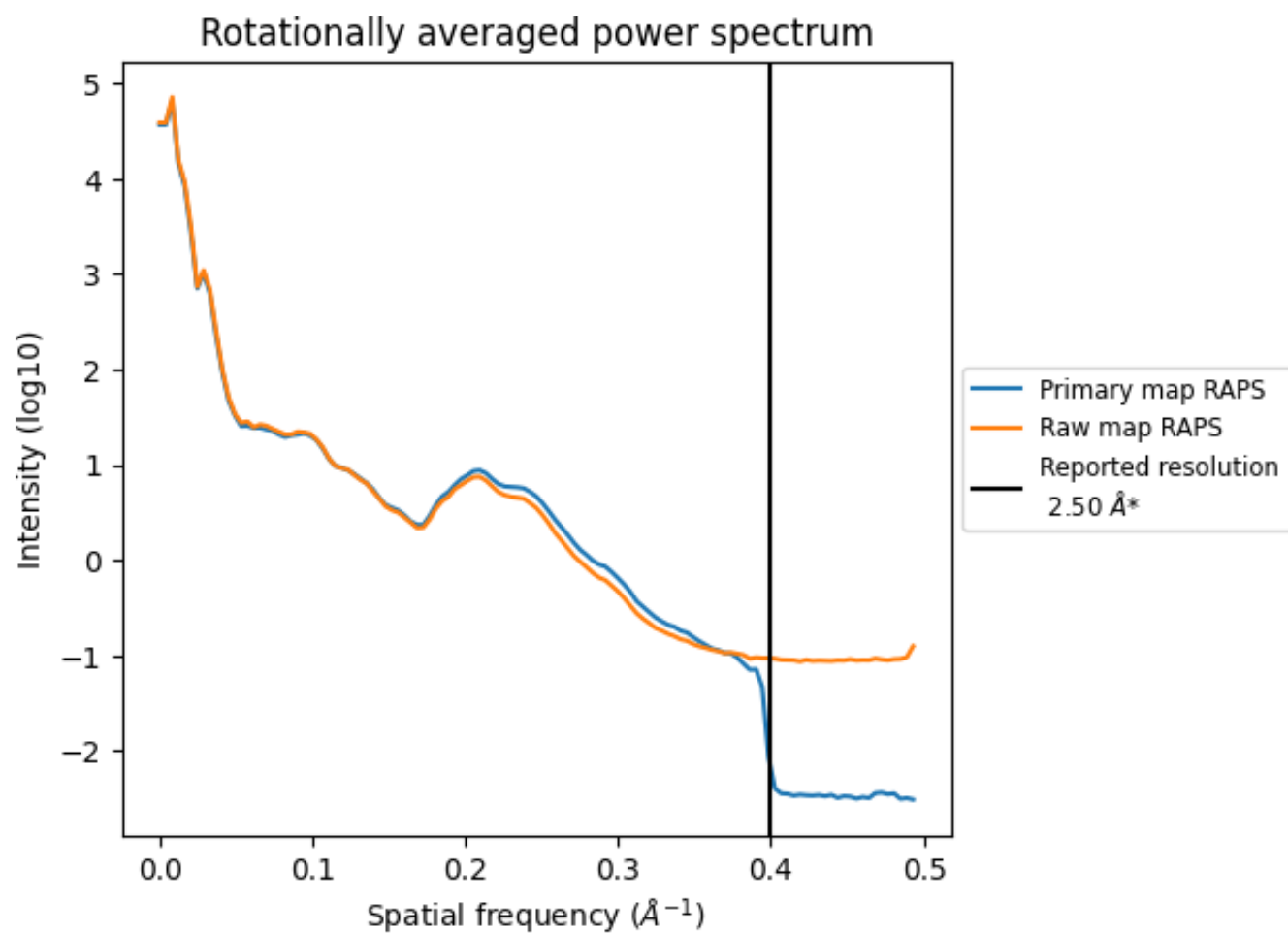
7.2 Volume estimate [i](#)



The volume at the recommended contour level is 115 nm³; this corresponds to an approximate mass of 104 kDa.

The volume estimate graph shows how the enclosed volume varies with the contour level. The recommended contour level is shown as a vertical line and the intersection between the line and the curve gives the volume of the enclosed surface at the given level.

7.3 Rotationally averaged power spectrum ⓘ

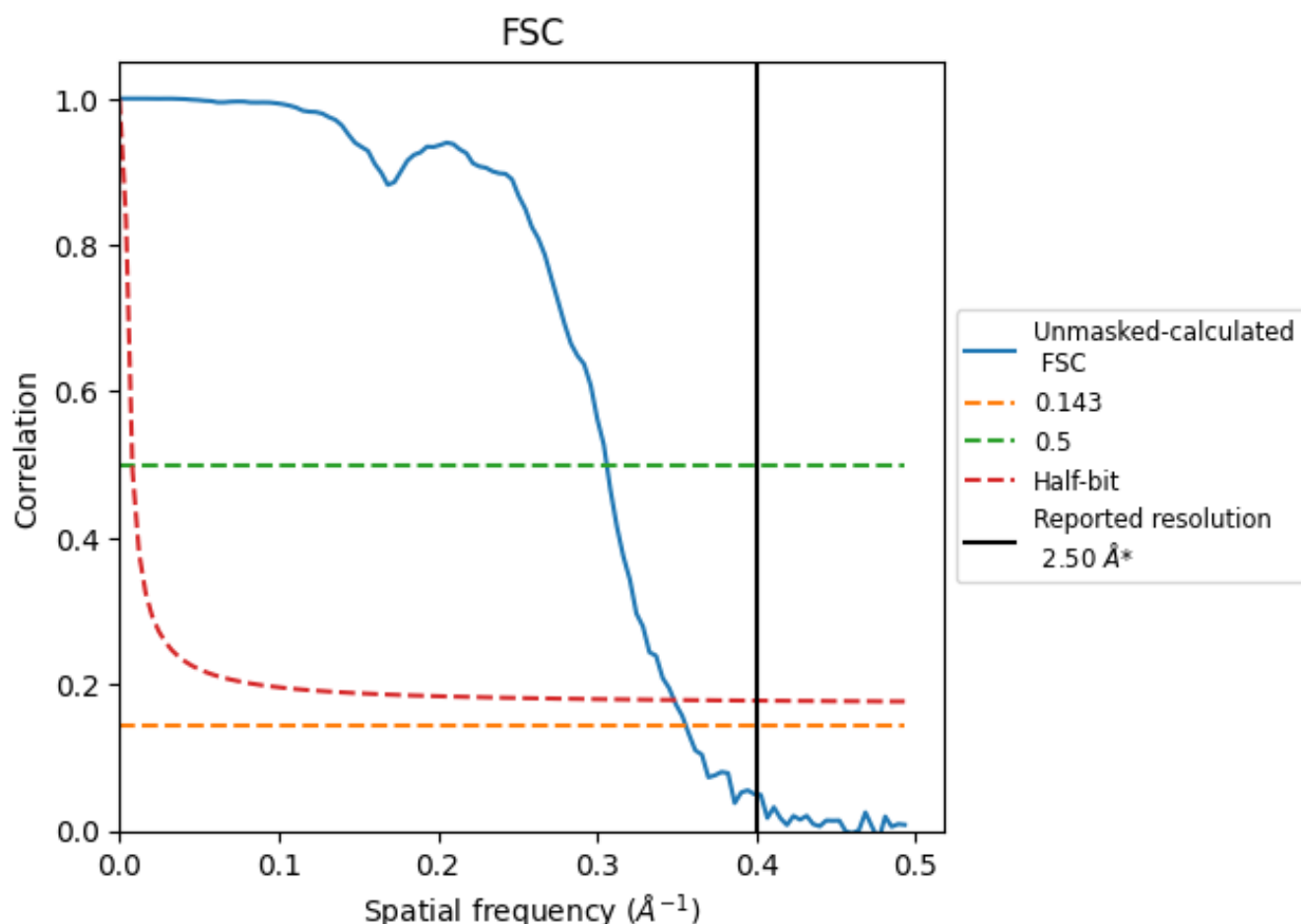


*Reported resolution corresponds to spatial frequency of 0.400 Å⁻¹

8 Fourier-Shell correlation [i](#)

Fourier-Shell Correlation (FSC) is the most commonly used method to estimate the resolution of single-particle and subtomogram-averaged maps. The shape of the curve depends on the imposed symmetry, mask and whether or not the two 3D reconstructions used were processed from a common reference. The reported resolution is shown as a black line. A curve is displayed for the half-bit criterion in addition to lines showing the 0.143 gold standard cut-off and 0.5 cut-off.

8.1 FSC [i](#)



*Reported resolution corresponds to spatial frequency of 0.400 \AA^{-1}

8.2 Resolution estimates [i](#)

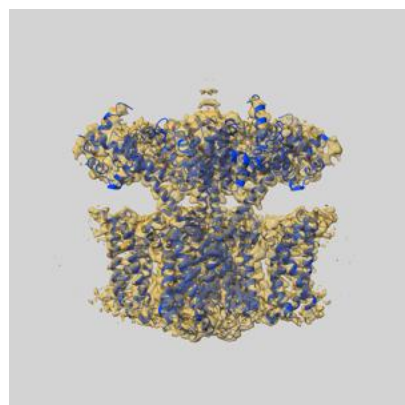
Resolution estimate (Å)	Estimation criterion (FSC cut-off)		
	0.143	0.5	Half-bit
Reported by author	2.50	-	-
Author-provided FSC curve	-	-	-
Unmasked-calculated*	2.81	3.27	2.87

*Resolution estimate based on FSC curve calculated by comparison of deposited half-maps. The value from deposited half-maps intersecting FSC 0.143 CUT-OFF 2.81 differs from the reported value 2.5 by more than 10 %

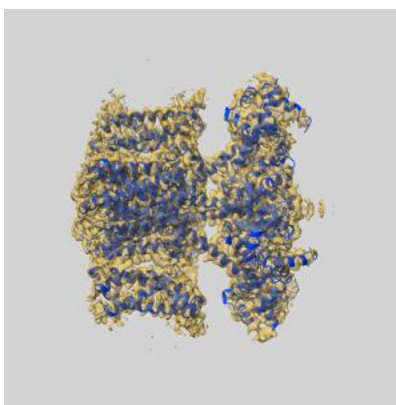
9 Map-model fit [i](#)

This section contains information regarding the fit between EMDB map EMD-33319 and PDB model 7XNN. Per-residue inclusion information can be found in section [3](#) on page [10](#).

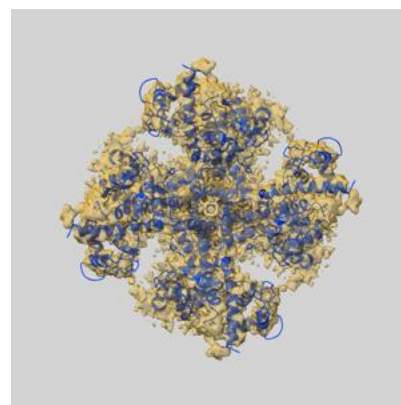
9.1 Map-model overlay [i](#)



X



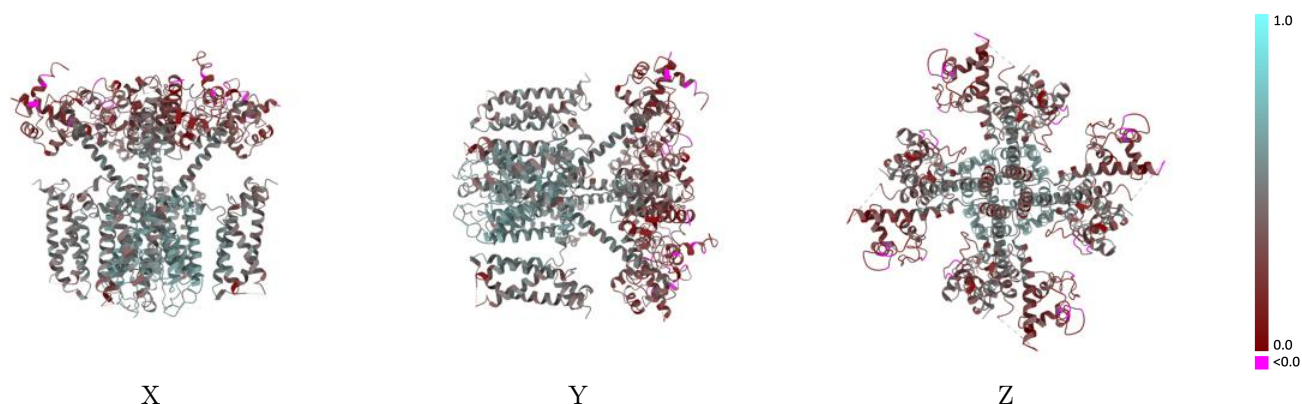
Y



Z

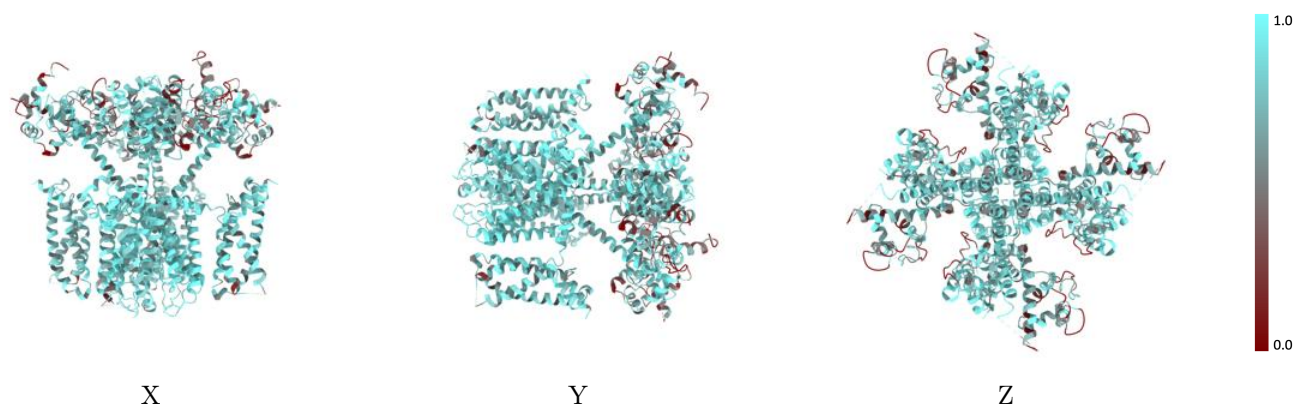
The images above show the 3D surface view of the map at the recommended contour level 0.0081 at 50% transparency in yellow overlaid with a ribbon representation of the model coloured in blue. These images allow for the visual assessment of the quality of fit between the atomic model and the map.

9.2 Q-score mapped to coordinate model [i](#)



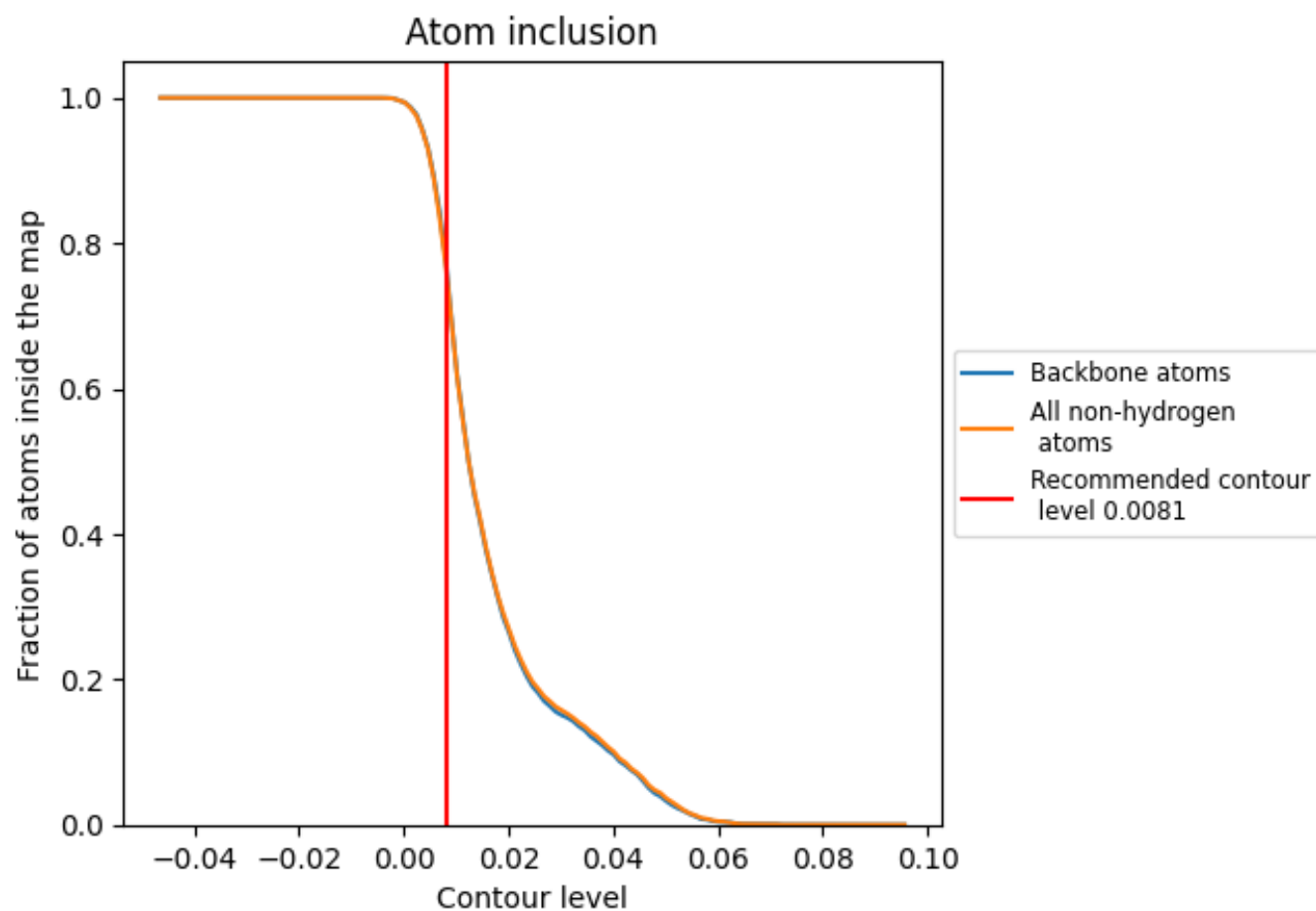
The images above show the model with each residue coloured according to its Q-score. This shows their resolvability in the map with higher Q-score values reflecting better resolvability. Please note: Q-score is calculating the resolvability of atoms, and thus high values are only expected at resolutions at which atoms can be resolved. Low Q-score values may therefore be expected for many entries.

9.3 Atom inclusion mapped to coordinate model [i](#)



The images above show the model with each residue coloured according to its atom inclusion. This shows to what extent they are inside the map at the recommended contour level (0.0081).

9.4 Atom inclusion [i](#)



At the recommended contour level, 77% of all backbone atoms, 77% of all non-hydrogen atoms, are inside the map.

9.5 Map-model fit summary ⓘ

The table lists the average atom inclusion at the recommended contour level (0.0081) and Q-score for the entire model and for each chain.

Chain	Atom inclusion	Q-score
All	<div></div> 0.7655	<div></div> 0.4280
A	<div></div> 0.5961	<div></div> 0.2630
B	<div></div> 0.8260	<div></div> 0.4800
C	<div></div> 0.8240	<div></div> 0.4790
D	<div></div> 0.5852	<div></div> 0.2590
E	<div></div> 0.8247	<div></div> 0.4770
F	<div></div> 0.5888	<div></div> 0.2620
G	<div></div> 0.8243	<div></div> 0.4780
H	<div></div> 0.5937	<div></div> 0.2630

1.0

0.0

<0.0