



# Full wwPDB X-ray Structure Validation Report ⓘ

May 22, 2020 – 12:05 am BST

PDB ID : 5XP5  
Title : C-Src in complex with ATP-Chf  
Authors : Duan, Y.; Guo, M.; Dai, S.; Chen, L.; Chen, Y.  
Deposited on : 2017-06-01  
Resolution : 2.10 Å(reported)

This is a Full wwPDB X-ray Structure Validation Report for a publicly released PDB entry.

We welcome your comments at [validation@mail.wwpdb.org](mailto:validation@mail.wwpdb.org)

A user guide is available at

<https://www.wwpdb.org/validation/2017/XrayValidationReportHelp>

with specific help available everywhere you see the ⓘ symbol.

---

The following versions of software and data (see [references ⓘ](#)) were used in the production of this report:

MolProbity : 4.02b-467  
Mogul : 1.8.5 (274361), CSD as541be (2020)  
Xtriage (Phenix) : 1.13  
EDS : 2.11  
buster-report : 1.1.7 (2018)  
Percentile statistics : 20191225.v01 (using entries in the PDB archive December 25th 2019)  
Refmac : 5.8.0158  
CCP4 : 7.0.044 (Gargrove)  
Ideal geometry (proteins) : Engh & Huber (2001)  
Ideal geometry (DNA, RNA) : Parkinson et al. (1996)  
Validation Pipeline (wwPDB-VP) : 2.11

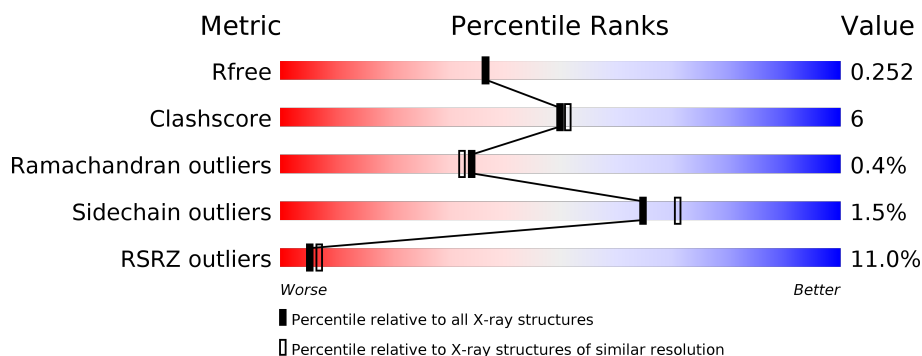
# 1 Overall quality at a glance

The following experimental techniques were used to determine the structure:

## *X-RAY DIFFRACTION*

The reported resolution of this entry is 2.10 Å.

Percentile scores (ranging between 0-100) for global validation metrics of the entry are shown in the following graphic. The table shows the number of entries on which the scores are based.



Metric	Whole archive (#Entries)	Similar resolution (#Entries, resolution range(Å))
$R_{free}$	130704	5197 (2.10-2.10)
Clashscore	141614	5710 (2.10-2.10)
Ramachandran outliers	138981	5647 (2.10-2.10)
Sidechain outliers	138945	5648 (2.10-2.10)
RSRZ outliers	127900	5083 (2.10-2.10)

The table below summarises the geometric issues observed across the polymeric chains and their fit to the electron density. The red, orange, yellow and green segments on the lower bar indicate the fraction of residues that contain outliers for  $\geq 3$ , 2, 1 and 0 types of geometric quality criteria respectively. A grey segment represents the fraction of residues that are not modelled. The numeric value for each fraction is indicated below the corresponding segment, with a dot representing fractions  $\leq 5\%$ . The upper red bar (where present) indicates the fraction of residues that have poor fit to the electron density. The numeric value is given above the bar.

Mol	Chain	Length	Quality of chain
1	A	286	<div> <div>14%</div> <div> <div></div> <div>75%</div> <div>17%</div> <div>• 7%</div> </div> </div>
1	B	286	<div> <div>7%</div> <div> <div></div> <div>85%</div> <div>8%</div> <div>7%</div> </div> </div>

## 2 Entry composition

There are 4 unique types of molecules in this entry. The entry contains 4543 atoms, of which 0 are hydrogens and 0 are deuteriums.

In the tables below, the ZeroOcc column contains the number of atoms modelled with zero occupancy, the AltConf column contains the number of residues with at least one atom in alternate conformation and the Trace column contains the number of residues modelled with at most 2 atoms.

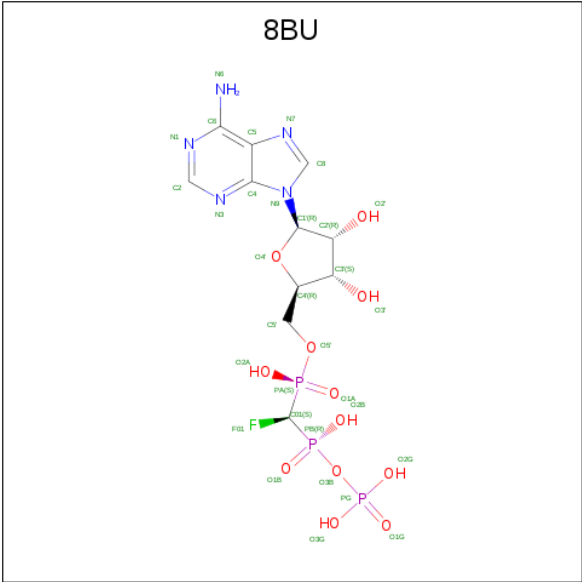
- Molecule 1 is a protein called Proto-oncogene tyrosine-protein kinase Src.

Mol	Chain	Residues	Atoms					ZeroOcc	AltConf	Trace
1	A	267	Total	C	N	O	S	0	0	0
			2145	1378	359	391	17			
1	B	267	Total	C	N	O	S	0	0	0
			2145	1378	359	391	17			

There are 6 discrepancies between the modelled and reference sequences:

Chain	Residue	Modelled	Actual	Comment	Reference
A	248	GLY	-	expression tag	UNP P00523
A	249	HIS	-	expression tag	UNP P00523
A	250	MET	-	expression tag	UNP P00523
B	248	GLY	-	expression tag	UNP P00523
B	249	HIS	-	expression tag	UNP P00523
B	250	MET	-	expression tag	UNP P00523

- Molecule 2 is [(2R,3S,4R,5R)-5-(6-aminopurin-9-yl)-3,4-bis(oxidanyl)oxolan-2-yl]methoxy-[(S)-fluoranyl-[oxidanyl(phosphonooxy)phosphoryl]methyl]phosphinic acid (three-letter code: 8BU) (formula: C<sub>11</sub>H<sub>17</sub>FN<sub>5</sub>O<sub>12</sub>P<sub>3</sub>).



Mol	Chain	Residues	Atoms						ZeroOcc	AltConf
2	A	1	Total	C	F	N	O	P	0	0
			32	11	1	5	12	3		
2	B	1	Total	C	F	N	O	P	0	0
			32	11	1	5	12	3		

- Molecule 3 is MAGNESIUM ION (three-letter code: MG) (formula: Mg).

Mol	Chain	Residues	Atoms		ZeroOcc	AltConf
3	B	1	Total	Mg	0	0
			1	1		
3	A	1	Total	Mg	0	0
			1	1		

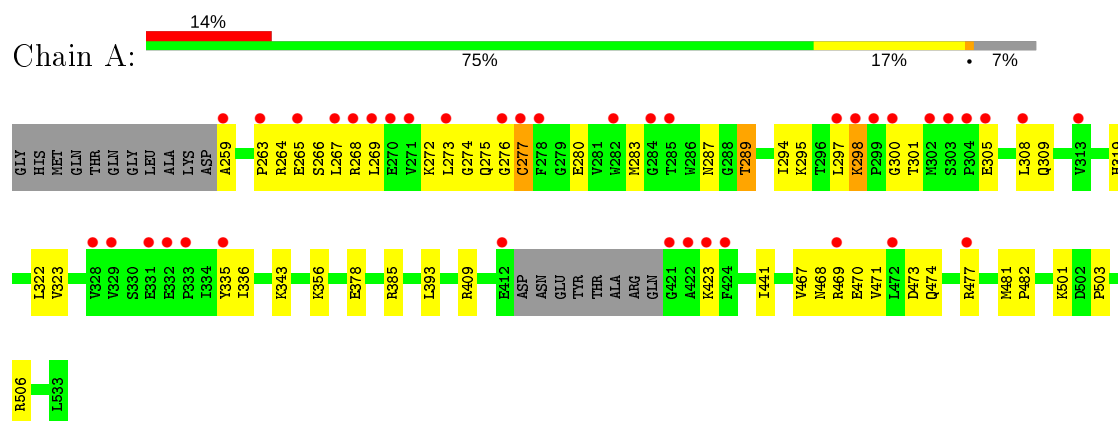
- Molecule 4 is water.

Mol	Chain	Residues	Atoms		ZeroOcc	AltConf
4	A	91	Total	O	0	0
			91	91		
4	B	96	Total	O	0	0
			96	96		

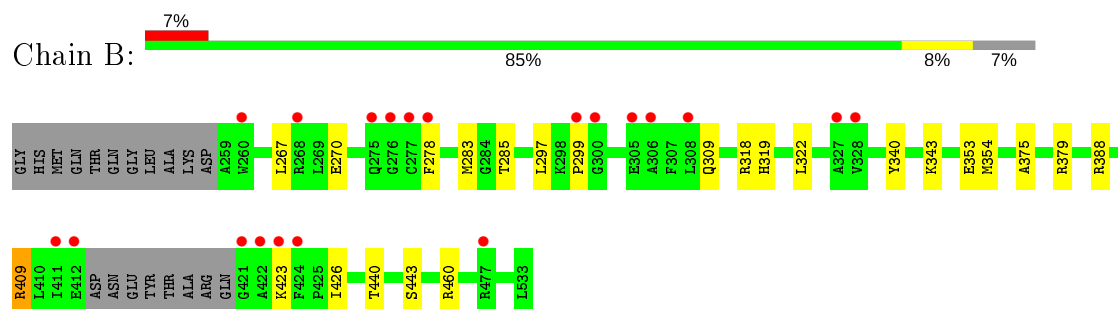
### 3 Residue-property plots [i](#)

These plots are drawn for all protein, RNA and DNA chains in the entry. The first graphic for a chain summarises the proportions of the various outlier classes displayed in the second graphic. The second graphic shows the sequence view annotated by issues in geometry and electron density. Residues are color-coded according to the number of geometric quality criteria for which they contain at least one outlier: green = 0, yellow = 1, orange = 2 and red = 3 or more. A red dot above a residue indicates a poor fit to the electron density ( $RSRZ > 2$ ). Stretches of 2 or more consecutive residues without any outlier are shown as a green connector. Residues present in the sample, but not in the model, are shown in grey.

- Molecule 1: Proto-oncogene tyrosine-protein kinase Src



- Molecule 1: Proto-oncogene tyrosine-protein kinase Src



## 4 Data and refinement statistics

Property	Value	Source
Space group	P 1	Depositor
Cell constants a, b, c, $\alpha$ , $\beta$ , $\gamma$	42.29Å 63.69Å 73.81Å 79.07° 89.23° 89.24°	Depositor
Resolution (Å)	43.45 – 2.10 43.45 – 2.10	Depositor EDS
% Data completeness (in resolution range)	93.7 (43.45-2.10) 93.7 (43.45-2.10)	Depositor EDS
$R_{merge}$	(Not available)	Depositor
$R_{sym}$	(Not available)	Depositor
$\langle I/\sigma(I) \rangle$ <sup>1</sup>	1.26 (at 2.10Å)	Xtriage
Refinement program	PHENIX 1.8.4 _1496	Depositor
R, $R_{free}$	0.218 , 0.246 0.225 , 0.252	Depositor DCC
$R_{free}$ test set	1971 reflections (4.77%)	wwPDB-VP
Wilson B-factor (Å <sup>2</sup> )	40.2	Xtriage
Anisotropy	0.144	Xtriage
Bulk solvent $k_{sol}$ (e/Å <sup>3</sup> ), $B_{sol}$ (Å <sup>2</sup> )	0.33 , 42.8	EDS
L-test for twinning <sup>2</sup>	$\langle  L  \rangle = 0.50$ , $\langle L^2 \rangle = 0.33$	Xtriage
Estimated twinning fraction	0.023 for h,-k,-l	Xtriage
$F_o, F_c$ correlation	0.94	EDS
Total number of atoms	4543	wwPDB-VP
Average B, all atoms (Å <sup>2</sup> )	54.0	wwPDB-VP

Xtriage's analysis on translational NCS is as follows: *The largest off-origin peak in the Patterson function is 8.08% of the height of the origin peak. No significant pseudotranslation is detected.*

<sup>1</sup>Intensities estimated from amplitudes.

<sup>2</sup>Theoretical values of  $\langle |L| \rangle$ ,  $\langle L^2 \rangle$  for acentric reflections are 0.5, 0.333 respectively for untwinned datasets, and 0.375, 0.2 for perfectly twinned datasets.

## 5 Model quality [i](#)

### 5.1 Standard geometry [i](#)

Bond lengths and bond angles in the following residue types are not validated in this section: 8BU, MG

The Z score for a bond length (or angle) is the number of standard deviations the observed value is removed from the expected value. A bond length (or angle) with  $|Z| > 5$  is considered an outlier worth inspection. RMSZ is the root-mean-square of all Z scores of the bond lengths (or angles).

Mol	Chain	Bond lengths		Bond angles	
		RMSZ	$\# Z  > 5$	RMSZ	$\# Z  > 5$
1	A	0.28	0/2197	0.50	0/2973
1	B	0.27	0/2197	0.44	1/2973 (0.0%)
All	All	0.28	0/4394	0.47	1/5946 (0.0%)

Chiral center outliers are detected by calculating the chiral volume of a chiral center and verifying if the center is modelled as a planar moiety or with the opposite hand. A planarity outlier is detected by checking planarity of atoms in a peptide group, atoms in a mainchain group or atoms of a sidechain that are expected to be planar.

Mol	Chain	#Chirality outliers	#Planarity outliers
1	A	0	1

There are no bond length outliers.

All (1) bond angle outliers are listed below:

Mol	Chain	Res	Type	Atoms	Z	Observed( $^{\circ}$ )	Ideal( $^{\circ}$ )
1	B	409	ARG	NE-CZ-NH1	-5.66	117.47	120.30

There are no chirality outliers.

All (1) planarity outliers are listed below:

Mol	Chain	Res	Type	Group
1	A	298	LYS	Peptide

### 5.2 Too-close contacts [i](#)

In the following table, the Non-H and H(model) columns list the number of non-hydrogen atoms and hydrogen atoms in the chain respectively. The H(added) column lists the number of hydrogen atoms added and optimized by MolProbity. The Clashes column lists the number of clashes within

the asymmetric unit, whereas Symm-Clashes lists symmetry related clashes.

Mol	Chain	Non-H	H(model)	H(added)	Clashes	Symm-Clashes
1	A	2145	0	2139	34	0
1	B	2145	0	2139	16	0
2	A	32	0	0	1	0
2	B	32	0	0	1	0
3	A	1	0	0	0	0
3	B	1	0	0	0	0
4	A	91	0	0	4	1
4	B	96	0	0	5	1
All	All	4543	0	4278	50	1

The all-atom clashscore is defined as the number of clashes found per 1000 atoms (including hydrogen atoms). The all-atom clashscore for this structure is 6.

All (50) close contacts within the same asymmetric unit are listed below, sorted by their clash magnitude.

Atom-1	Atom-2	Interatomic distance (Å)	Clash overlap (Å)
1:B:460:ARG:NH1	4:B:703:HOH:O	2.07	0.85
1:A:501:LYS:O	4:A:701:HOH:O	2.00	0.79
1:A:343:LYS:O	4:A:702:HOH:O	2.08	0.69
1:A:297:LEU:HD21	1:A:301:THR:H	1.60	0.67
1:A:264:ARG:HE	1:A:335:TYR:HE2	1.41	0.67
1:A:274:GLY:HA3	2:A:601:8BU:C5'	2.36	0.56
1:A:423:LYS:HB3	4:A:756:HOH:O	2.05	0.55
1:B:309:GLN:N	1:B:309:GLN:OE1	2.42	0.53
1:A:263:PRO:O	1:A:266:SER:OG	2.26	0.53
1:A:470:GLU:O	1:A:474:GLN:HG2	2.08	0.53
1:A:378:GLU:HG3	1:A:441:ILE:HG12	1.91	0.52
1:A:305:GLU:HG3	1:A:308:LEU:HD23	1.92	0.52
1:A:259:ALA:HB3	4:A:703:HOH:O	2.11	0.51
1:B:319:HIS:HB3	1:B:322:LEU:HG	1.91	0.51
1:A:503:PRO:HA	1:A:506:ARG:CZ	2.41	0.51
1:A:473:ASP:O	1:A:477:ARG:HG3	2.11	0.50
1:A:468:ASN:O	1:A:471:VAL:HB	2.12	0.49
1:A:305:GLU:HA	1:A:308:LEU:HB3	1.94	0.49
1:B:426:ILE:H	1:B:426:ILE:HD12	1.78	0.48
1:A:269:LEU:HD12	1:A:269:LEU:H	1.79	0.48
1:A:264:ARG:HA	1:A:267:LEU:HD13	1.96	0.47
1:B:343:LYS:O	4:B:704:HOH:O	2.20	0.47
1:B:270:GLU:OE2	1:B:285:THR:OG1	2.16	0.47
1:A:273:LEU:HD11	1:A:283:MET:HB2	1.97	0.46

*Continued on next page...*



Continued from previous page...

Atom-1	Atom-2	Interatomic distance (Å)	Clash overlap (Å)
1:B:440:THR:O	1:B:443:SER:OG	2.31	0.46
1:A:287:ASN:HB2	1:A:289:THR:HG22	1.98	0.45
1:B:423:LYS:HB2	1:B:423:LYS:HE2	1.74	0.45
1:B:278:PHE:HZ	2:B:601:8BU:O2B	2.01	0.44
1:A:305:GLU:O	1:A:308:LEU:HB3	2.17	0.44
1:B:267:LEU:HA	1:B:285:THR:O	2.17	0.44
1:A:467:VAL:O	1:A:471:VAL:HG23	2.18	0.44
1:A:297:LEU:HD23	1:A:298:LYS:O	2.18	0.43
1:A:263:PRO:HB2	1:A:265:GLU:HG2	2.00	0.43
1:B:388:ARG:NH1	4:B:713:HOH:O	2.45	0.43
1:A:272:LYS:HD2	1:A:280:GLU:OE2	2.19	0.43
1:B:297:LEU:O	1:B:299:PRO:HD3	2.19	0.43
1:A:276:GLY:O	1:A:277:CYS:HB2	2.19	0.42
1:B:283:MET:HG3	1:B:340:TYR:CE1	2.54	0.42
1:A:269:LEU:HG	1:A:294:ILE:HD13	2.02	0.41
1:A:385:ARG:HH12	1:A:409:ARG:HH21	1.68	0.41
1:A:385:ARG:NH1	1:A:409:ARG:HH21	2.18	0.41
1:B:353:GLU:OE2	4:B:705:HOH:O	2.22	0.41
1:B:375:ALA:O	1:B:379:ARG:HG3	2.20	0.41
1:A:295:LYS:HB3	1:A:336:ILE:HB	2.02	0.41
1:B:318:ARG:NH2	4:B:717:HOH:O	2.53	0.41
1:A:319:HIS:HB3	1:A:322:LEU:HG	2.02	0.41
1:A:273:LEU:CD1	1:A:283:MET:HB2	2.50	0.40
1:A:323:VAL:HG21	1:A:393:LEU:HD12	2.02	0.40
1:A:356:LYS:HB3	1:A:356:LYS:HE3	1.64	0.40
1:A:481:MET:HA	1:A:482:PRO:HD3	1.92	0.40

All (1) symmetry-related close contacts are listed below. The label for Atom-2 includes the symmetry operator and encoded unit-cell translations to be applied.

Atom-1	Atom-2	Interatomic distance (Å)	Clash overlap (Å)
4:A:786:HOH:O	4:B:784:HOH:O[1_554]	2.11	0.09

## 5.3 Torsion angles [i](#)

### 5.3.1 Protein backbone [i](#)

In the following table, the Percentiles column shows the percent Ramachandran outliers of the chain as a percentile score with respect to all X-ray entries followed by that with respect to entries of similar resolution.

The Analysed column shows the number of residues for which the backbone conformation was analysed, and the total number of residues.

Mol	Chain	Analysed	Favoured	Allowed	Outliers	Percentiles	
1	A	263/286 (92%)	246 (94%)	15 (6%)	2 (1%)	19	15
1	B	263/286 (92%)	251 (95%)	12 (5%)	0	100	100
All	All	526/572 (92%)	497 (94%)	27 (5%)	2 (0%)	34	32

All (2) Ramachandran outliers are listed below:

Mol	Chain	Res	Type
1	A	268	ARG
1	A	300	GLY

### 5.3.2 Protein sidechains ⓘ

In the following table, the Percentiles column shows the percent sidechain outliers of the chain as a percentile score with respect to all X-ray entries followed by that with respect to entries of similar resolution.

The Analysed column shows the number of residues for which the sidechain conformation was analysed, and the total number of residues.

Mol	Chain	Analysed	Rotameric	Outliers	Percentiles	
1	A	230/245 (94%)	225 (98%)	5 (2%)	52	57
1	B	230/245 (94%)	228 (99%)	2 (1%)	78	84
All	All	460/490 (94%)	453 (98%)	7 (2%)	65	71

All (7) residues with a non-rotameric sidechain are listed below:

Mol	Chain	Res	Type
1	A	275	GLN
1	A	277	CYS
1	A	289	THR
1	A	309	GLN
1	A	469	ARG
1	B	354	MET
1	B	409	ARG

Some sidechains can be flipped to improve hydrogen bonding and reduce clashes. All (2) such sidechains are listed below:

Mol	Chain	Res	Type
1	A	309	GLN
1	A	312	GLN

### 5.3.3 RNA [i](#)

There are no RNA molecules in this entry.

## 5.4 Non-standard residues in protein, DNA, RNA chains [i](#)

There are no non-standard protein/DNA/RNA residues in this entry.

## 5.5 Carbohydrates [i](#)

There are no carbohydrates in this entry.

## 5.6 Ligand geometry [i](#)

Of 4 ligands modelled in this entry, 2 are monoatomic - leaving 2 for Mogul analysis.

In the following table, the Counts columns list the number of bonds (or angles) for which Mogul statistics could be retrieved, the number of bonds (or angles) that are observed in the model and the number of bonds (or angles) that are defined in the Chemical Component Dictionary. The Link column lists molecule types, if any, to which the group is linked. The Z score for a bond length (or angle) is the number of standard deviations the observed value is removed from the expected value. A bond length (or angle) with  $|Z| > 2$  is considered an outlier worth inspection. RMSZ is the root-mean-square of all Z scores of the bond lengths (or angles).

Mol	Type	Chain	Res	Link	Bond lengths			Bond angles		
					Counts	RMSZ	# Z  > 2	Counts	RMSZ	# Z  > 2
2	8BU	A	601	3	27,34,34	1.44	5 (18%)	34,54,54	1.73	10 (29%)
2	8BU	B	601	3	27,34,34	1.48	6 (22%)	34,54,54	1.58	5 (14%)

In the following table, the Chirals column lists the number of chiral outliers, the number of chiral centers analysed, the number of these observed in the model and the number defined in the Chemical Component Dictionary. Similar counts are reported in the Torsion and Rings columns. '-' means no outliers of that kind were identified.

Mol	Type	Chain	Res	Link	Chirals	Torsions	Rings
2	8BU	A	601	3	-	4/15/44/44	0/3/3/3
2	8BU	B	601	3	-	5/15/44/44	0/3/3/3

All (11) bond length outliers are listed below:

Mol	Chain	Res	Type	Atoms	Z	Observed(Å)	Ideal(Å)
2	A	601	8BU	C5-C4	2.93	1.48	1.40
2	A	601	8BU	PA-O5'	2.90	1.61	1.57
2	B	601	8BU	O4'-C1'	2.89	1.45	1.41
2	B	601	8BU	PB-O2B	-2.81	1.50	1.56
2	A	601	8BU	O4'-C1'	2.75	1.44	1.41
2	B	601	8BU	C4-N3	-2.54	1.32	1.35
2	B	601	8BU	C5-C4	2.25	1.46	1.40
2	B	601	8BU	PA-O2A	-2.18	1.51	1.56
2	A	601	8BU	PB-O3B	2.16	1.60	1.58
2	B	601	8BU	C5-N7	-2.16	1.31	1.39
2	A	601	8BU	PB-O2B	-2.08	1.51	1.56

All (15) bond angle outliers are listed below:

Mol	Chain	Res	Type	Atoms	Z	Observed(°)	Ideal(°)
2	B	601	8BU	C4-C5-N7	-5.68	103.48	109.40
2	A	601	8BU	C4-C5-N7	-4.73	104.47	109.40
2	A	601	8BU	PG-O3B-PB	-2.97	122.14	132.62
2	A	601	8BU	O2A-PA-O1A	2.96	118.78	111.58
2	A	601	8BU	C3'-C2'-C1'	2.89	105.33	100.98
2	A	601	8BU	O1A-PA-C01	-2.77	106.33	113.19
2	A	601	8BU	PA-O5'-C5'	-2.71	116.10	122.84
2	B	601	8BU	PA-O5'-C5'	-2.53	116.56	122.84
2	B	601	8BU	PG-O3B-PB	-2.51	123.77	132.62
2	B	601	8BU	O3'-C3'-C2'	-2.44	103.94	111.82
2	B	601	8BU	O2'-C2'-C3'	-2.30	104.39	111.82
2	A	601	8BU	O5'-PA-O1A	-2.07	110.23	114.99
2	A	601	8BU	C5-C6-N1	-2.05	115.70	120.35
2	A	601	8BU	O2B-PB-O1B	2.03	116.52	111.58
2	A	601	8BU	N6-C6-N1	2.02	122.78	118.57

There are no chirality outliers.

All (9) torsion outliers are listed below:

Mol	Chain	Res	Type	Atoms
2	A	601	8BU	PA-C01-PB-O1B
2	A	601	8BU	C5'-O5'-PA-O2A
2	B	601	8BU	PA-C01-PB-O1B
2	B	601	8BU	PA-C01-PB-O2B
2	B	601	8BU	C3'-C4'-C5'-O5'
2	B	601	8BU	O4'-C4'-C5'-O5'

*Continued on next page...*

*Continued from previous page...*

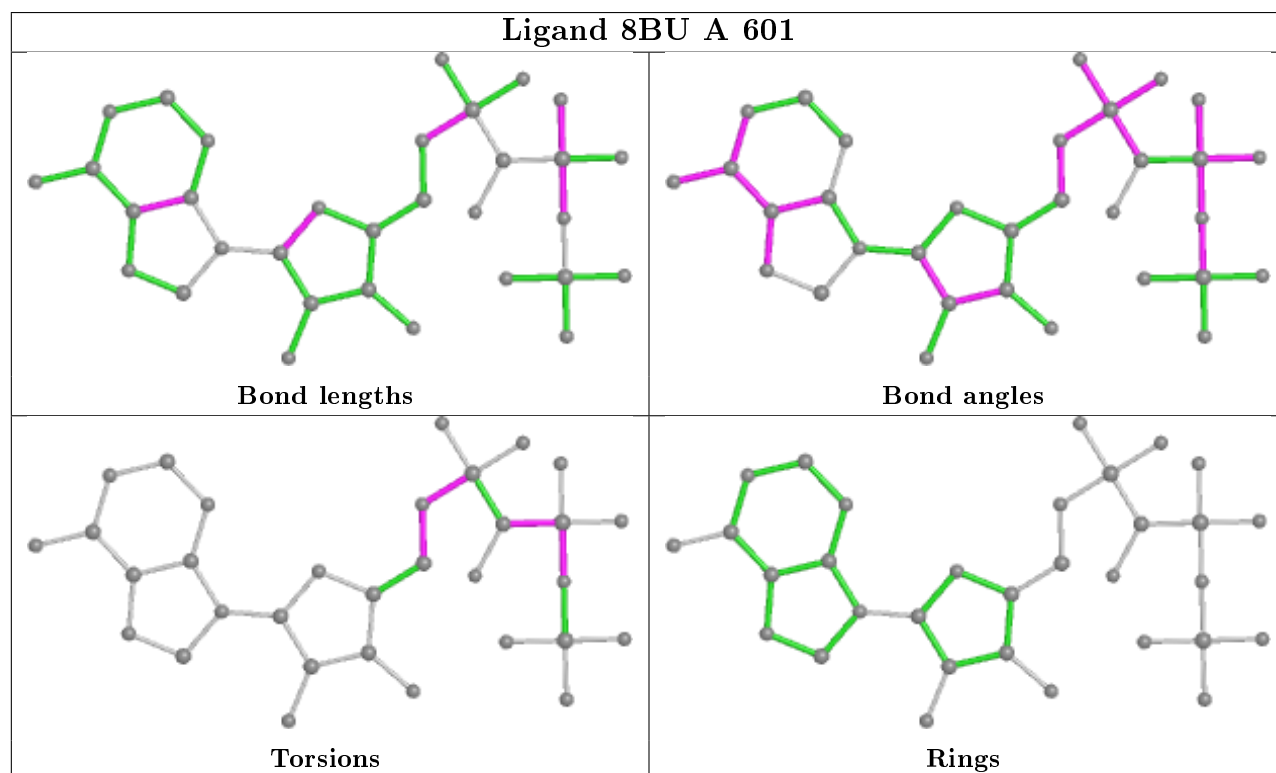
Mol	Chain	Res	Type	Atoms
2	A	601	8BU	C4'-C5'-O5'-PA
2	B	601	8BU	C5'-O5'-PA-C01
2	A	601	8BU	PG-O3B-PB-O2B

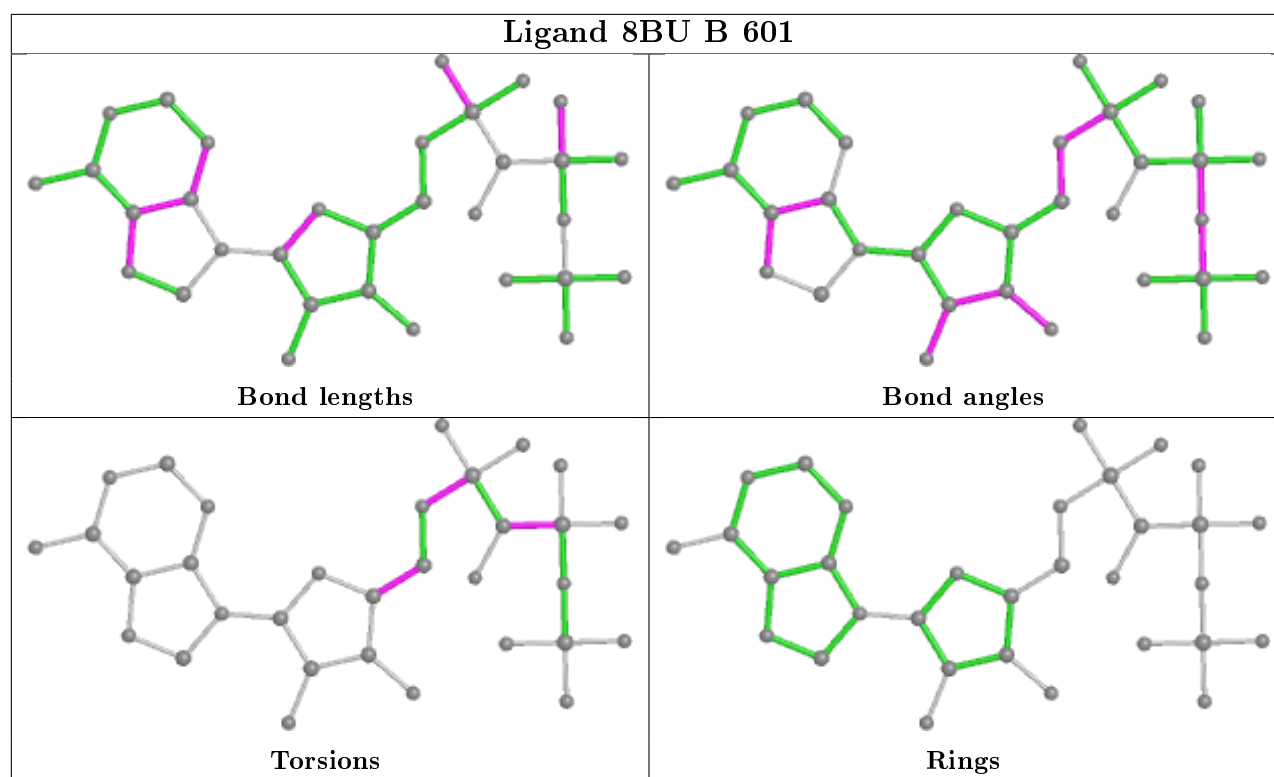
There are no ring outliers.

2 monomers are involved in 2 short contacts:

Mol	Chain	Res	Type	Clashes	Symm-Clashes
2	A	601	8BU	1	0
2	B	601	8BU	1	0

The following is a two-dimensional graphical depiction of Mogul quality analysis of bond lengths, bond angles, torsion angles, and ring geometry for all instances of the Ligand of Interest. In addition, ligands with molecular weight > 250 and outliers as shown on the validation Tables will also be included. For torsion angles, if less than 5% of the Mogul distribution of torsion angles is within 10 degrees of the torsion angle in question, then that torsion angle is considered an outlier. Any bond that is central to one or more torsion angles identified as an outlier by Mogul will be highlighted in the graph. For rings, the root-mean-square deviation (RMSD) between the ring in question and similar rings identified by Mogul is calculated over all ring torsion angles. If the average RMSD is greater than 60 degrees and the minimal RMSD between the ring in question and any Mogul-identified rings is also greater than 60 degrees, then that ring is considered an outlier. The outliers are highlighted in purple. The color gray indicates Mogul did not find sufficient equivalents in the CSD to analyse the geometry.





## 5.7 Other polymers [i](#)

There are no such residues in this entry.

## 5.8 Polymer linkage issues [i](#)

There are no chain breaks in this entry.

## 6 Fit of model and data ⓘ

### 6.1 Protein, DNA and RNA chains ⓘ

In the following table, the column labelled ‘#RSRZ> 2’ contains the number (and percentage) of RSRZ outliers, followed by percent RSRZ outliers for the chain as percentile scores relative to all X-ray entries and entries of similar resolution. The OWAB column contains the minimum, median, 95<sup>th</sup> percentile and maximum values of the occupancy-weighted average B-factor per residue. The column labelled ‘Q< 0.9’ lists the number of (and percentage) of residues with an average occupancy less than 0.9.

Mol	Chain	Analysed	<RSRZ>	#RSRZ>2	OWAB(Å <sup>2</sup> )	Q<0.9
1	A	267/286 (93%)	0.91	39 (14%) 2 3	27, 49, 104, 121	0
1	B	267/286 (93%)	0.66	20 (7%) 14 18	27, 50, 89, 114	0
All	All	534/572 (93%)	0.78	59 (11%) 5 7	27, 49, 98, 121	0

All (59) RSRZ outliers are listed below:

Mol	Chain	Res	Type	RSRZ
1	A	277	CYS	11.5
1	B	277	CYS	9.5
1	A	422	ALA	7.5
1	A	308	LEU	6.4
1	A	299	PRO	6.2
1	A	267	LEU	6.2
1	A	421	GLY	6.1
1	A	268	ARG	5.6
1	A	331	GLU	4.9
1	B	278	PHE	4.9
1	B	423	LYS	4.7
1	A	304	PRO	4.6
1	A	273	LEU	4.4
1	B	421	GLY	4.4
1	B	422	ALA	4.2
1	B	412	GLU	4.1
1	A	284	GLY	4.1
1	A	303	SER	4.1
1	A	302	MET	4.0
1	A	297	LEU	3.9
1	A	269	LEU	3.8
1	A	276	GLY	3.8
1	A	263	PRO	3.7
1	B	424	PHE	3.7

*Continued on next page...*

*Continued from previous page...*

Mol	Chain	Res	Type	RSRZ
1	A	271	VAL	3.6
1	B	268	ARG	3.6
1	B	411	ILE	3.6
1	A	328	VAL	3.5
1	A	423	LYS	3.5
1	A	333	PRO	3.5
1	B	300	GLY	3.4
1	B	308	LEU	3.4
1	A	335	TYR	3.4
1	A	305	GLU	3.4
1	A	477	ARG	3.3
1	A	300	GLY	3.2
1	A	424	PHE	3.2
1	A	265	GLU	3.1
1	B	305	GLU	3.1
1	B	306	ALA	3.0
1	A	332	GLU	2.9
1	B	260	TRP	2.9
1	A	278	PHE	2.9
1	A	298	LYS	2.8
1	A	472	LEU	2.8
1	B	327	ALA	2.7
1	A	285	THR	2.7
1	B	477	ARG	2.6
1	A	329	VAL	2.5
1	A	282	TRP	2.4
1	B	328	VAL	2.3
1	A	412	GLU	2.3
1	B	276	GLY	2.3
1	B	275	GLN	2.2
1	B	299	PRO	2.2
1	A	270	GLU	2.1
1	A	313	VAL	2.1
1	A	469	ARG	2.1
1	A	259	ALA	2.0

## 6.2 Non-standard residues in protein, DNA, RNA chains ⓘ

There are no non-standard protein/DNA/RNA residues in this entry.



## 6.3 Carbohydrates [i](#)

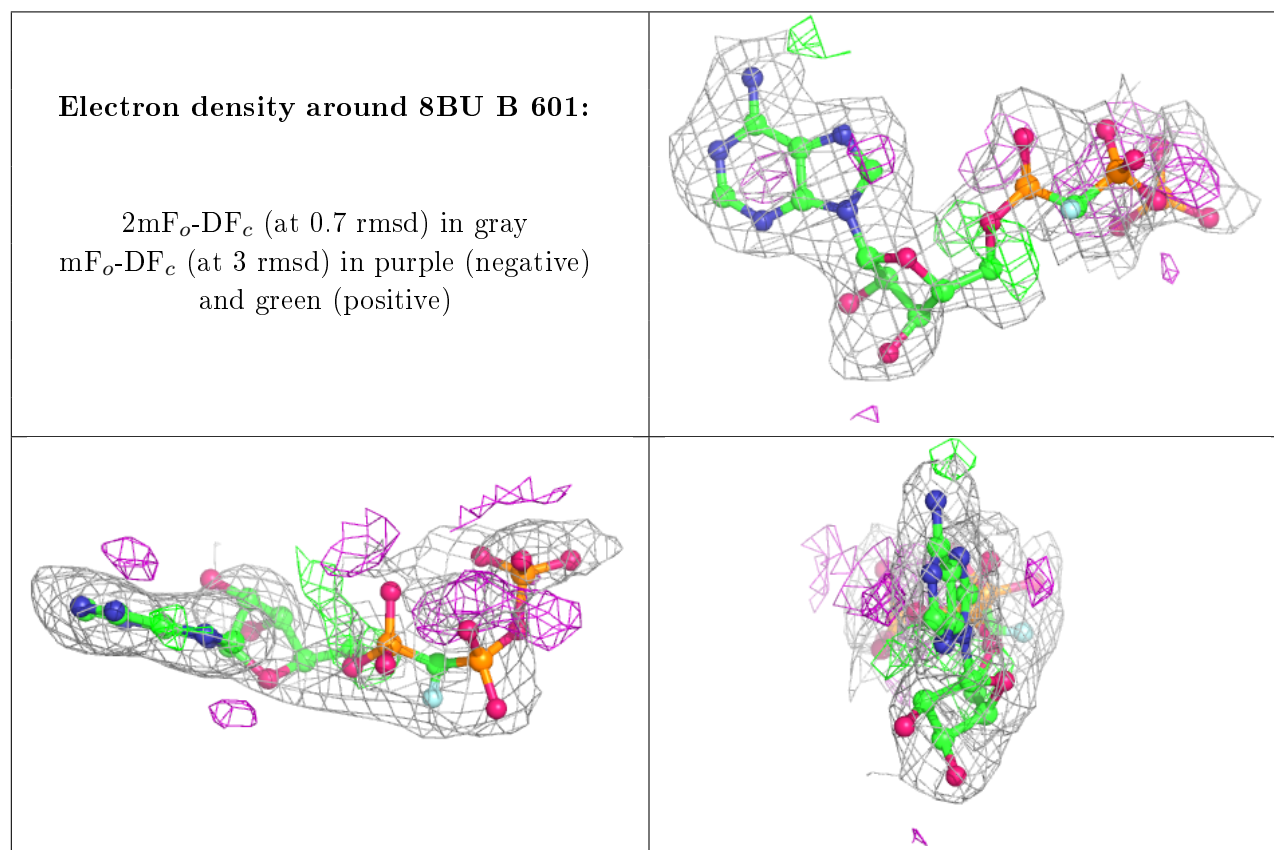
There are no carbohydrates in this entry.

## 6.4 Ligands [i](#)

In the following table, the Atoms column lists the number of modelled atoms in the group and the number defined in the chemical component dictionary. The B-factors column lists the minimum, median, 95<sup>th</sup> percentile and maximum values of B factors of atoms in the group. The column labelled 'Q<0.9' lists the number of atoms with occupancy less than 0.9.

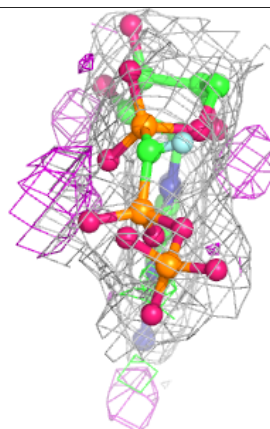
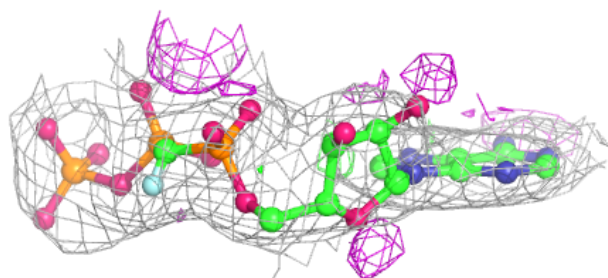
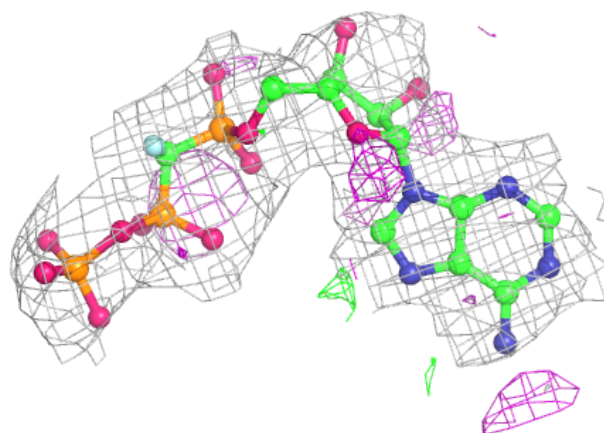
Mol	Type	Chain	Res	Atoms	RSCC	RSR	B-factors(Å <sup>2</sup> )	Q<0.9
2	8BU	B	601	32/32	0.82	0.19	38,89,156,180	0
2	8BU	A	601	32/32	0.85	0.16	52,98,137,177	0
3	MG	A	602	1/1	0.90	0.35	30,30,30,30	0
3	MG	B	602	1/1	0.97	0.24	30,30,30,30	0

The following is a graphical depiction of the model fit to experimental electron density of all instances of the Ligand of Interest. In addition, ligands with molecular weight > 250 and outliers as shown on the geometry validation Tables will also be included. Each fit is shown from different orientation to approximate a three-dimensional view.



**Electron density around 8BU A 601:**

$2mF_o-DF_c$  (at 0.7 rmsd) in gray  
 $mF_o-DF_c$  (at 3 rmsd) in purple (negative)  
and green (positive)



## 6.5 Other polymers [i](#)

There are no such residues in this entry.