



# Full wwPDB X-ray Structure Validation Report ⓘ

May 21, 2020 – 08:48 am BST

PDB ID : 4XR1  
Title : Escherichia Coli Replication Terminator Protein (Tus) Complexed With DNA-AG/AT mismatch.  
Authors : Oakley, A.J.  
Deposited on : 2015-01-20  
Resolution : 2.40 Å(reported)

This is a Full wwPDB X-ray Structure Validation Report for a publicly released PDB entry.

We welcome your comments at [validation@mail.wwpdb.org](mailto:validation@mail.wwpdb.org)

A user guide is available at

<https://www.wwpdb.org/validation/2017/XrayValidationReportHelp>

with specific help available everywhere you see the ⓘ symbol.

---

The following versions of software and data (see [references ⓘ](#)) were used in the production of this report:

MolProbity : 4.02b-467  
Mogul : 1.8.5 (274361), CSD as541be (2020)  
Xtriage (Phenix) : 1.13  
EDS : 2.11  
Percentile statistics : 20191225.v01 (using entries in the PDB archive December 25th 2019)  
Refmac : 5.8.0158  
CCP4 : 7.0.044 (Gargrove)  
Ideal geometry (proteins) : Engh & Huber (2001)  
Ideal geometry (DNA, RNA) : Parkinson et al. (1996)  
Validation Pipeline (wwPDB-VP) : 2.11

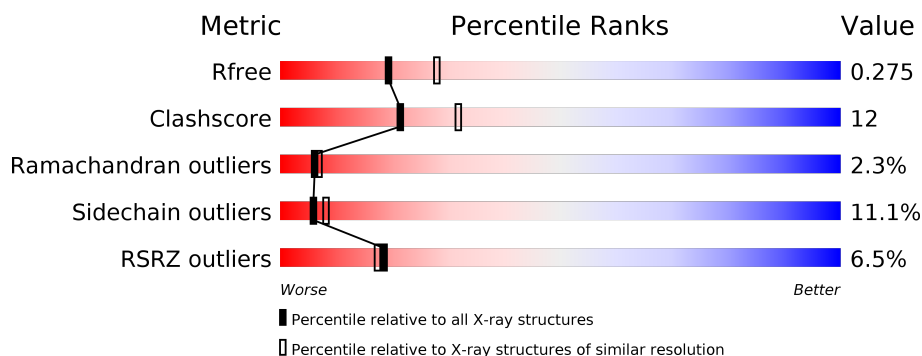
# 1 Overall quality at a glance

The following experimental techniques were used to determine the structure:

## *X-RAY DIFFRACTION*

The reported resolution of this entry is 2.40 Å.

Percentile scores (ranging between 0-100) for global validation metrics of the entry are shown in the following graphic. The table shows the number of entries on which the scores are based.



Metric	Whole archive (#Entries)	Similar resolution (#Entries, resolution range(Å))
$R_{free}$	130704	3907 (2.40-2.40)
Clashscore	141614	4398 (2.40-2.40)
Ramachandran outliers	138981	4318 (2.40-2.40)
Sidechain outliers	138945	4319 (2.40-2.40)
RSRZ outliers	127900	3811 (2.40-2.40)

The table below summarises the geometric issues observed across the polymeric chains and their fit to the electron density. The red, orange, yellow and green segments on the lower bar indicate the fraction of residues that contain outliers for  $\geq 3$ , 2, 1 and 0 types of geometric quality criteria respectively. A grey segment represents the fraction of residues that are not modelled. The numeric value for each fraction is indicated below the corresponding segment, with a dot representing fractions  $\leq 5\%$ . The upper red bar (where present) indicates the fraction of residues that have poor fit to the electron density. The numeric value is given above the bar.

Mol	Chain	Length	Quality of chain
1	A	316	<div> <div>6%</div> <div> <div></div> <div>70%</div> <div>20%</div> <div>6%</div> <div>••</div> </div> </div>
2	B	16	<div> <div>6%</div> <div> <div></div> <div>56%</div> <div>25%</div> <div>6%</div> <div>13%</div> </div> </div>
3	C	16	<div> <div>19%</div> <div> <div></div> <div>81%</div> <div>13%</div> <div>6%</div> </div> </div>

## 2 Entry composition

There are 6 unique types of molecules in this entry. The entry contains 3214 atoms, of which 0 are hydrogens and 0 are deuteriums.

In the tables below, the ZeroOcc column contains the number of atoms modelled with zero occupancy, the AltConf column contains the number of residues with at least one atom in alternate conformation and the Trace column contains the number of residues modelled with at most 2 atoms.

- Molecule 1 is a protein called DNA replication terminus site-binding protein.

Mol	Chain	Residues	Atoms					ZeroOcc	AltConf	Trace
1	A	307	Total	C	N	O	S	0	3	0
			2530	1605	479	443	3			

There are 7 discrepancies between the modelled and reference sequences:

Chain	Residue	Modelled	Actual	Comment	Reference
A	-6	MET	-	initiating methionine	UNP P16525
A	-5	HIS	-	expression tag	UNP P16525
A	-4	HIS	-	expression tag	UNP P16525
A	-3	HIS	-	expression tag	UNP P16525
A	-2	HIS	-	expression tag	UNP P16525
A	-1	HIS	-	expression tag	UNP P16525
A	0	HIS	-	expression tag	UNP P16525

- Molecule 2 is a DNA chain called DNA (5'-D(\*TP\*AP\*GP\*TP\*TP\*AP\*CP\*AP\*AP\*CP\*AP\*TP\*AP\*G)-3').

Mol	Chain	Residues	Atoms					ZeroOcc	AltConf	Trace
2	B	14	Total	C	N	O	P	0	0	0
			285	138	54	80	13			

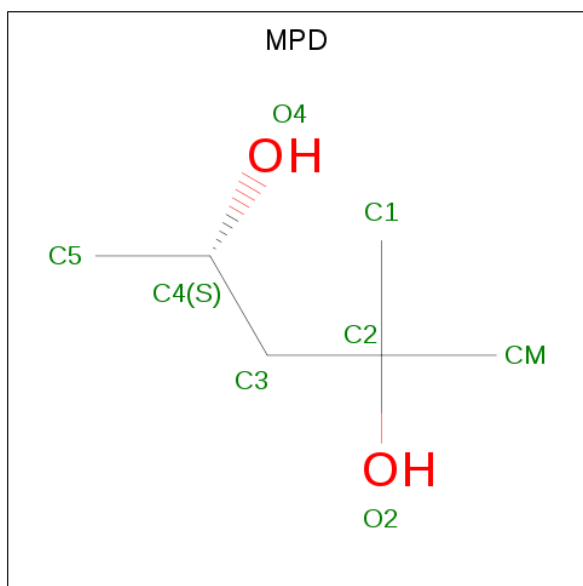
- Molecule 3 is a DNA chain called DNA (5'-D(\*GP\*TP\*AP\*AP\*TP\*GP\*TP\*TP\*GP\*TP\*AP\*AP\*CP\*TP\*A)-3').

Mol	Chain	Residues	Atoms					ZeroOcc	AltConf	Trace
3	C	15	Total	C	N	O	P	0	0	1
			289	139	50	86	14			

- Molecule 4 is IODIDE ION (three-letter code: IOD) (formula: I).

Mol	Chain	Residues	Atoms	ZeroOcc	AltConf
4	A	6	Total I 6 6	0	0

- Molecule 5 is (4S)-2-METHYL-2,4-PENTANEDIOL (three-letter code: MPD) (formula:  $C_6H_{14}O_2$ ).



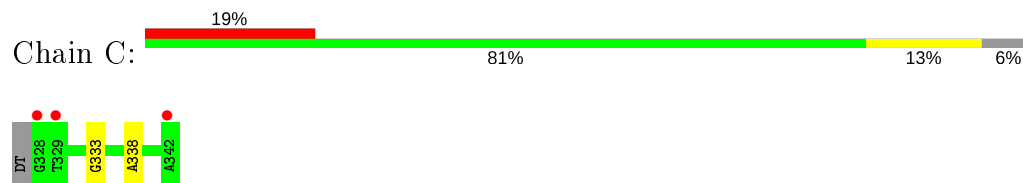
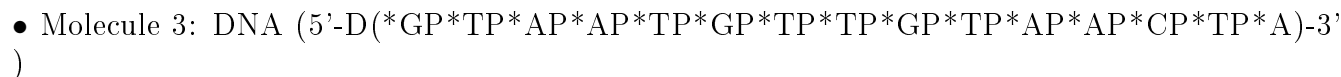
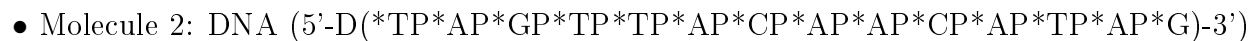
Mol	Chain	Residues	Atoms	ZeroOcc	AltConf
5	A	1	Total C O 8 6 2	0	0

- Molecule 6 is water.

Mol	Chain	Residues	Atoms	ZeroOcc	AltConf
6	A	72	Total O 72 72	0	0
6	B	13	Total O 13 13	0	0
6	C	11	Total O 11 11	0	0



- Molecule 1: DNA replication terminus site-binding protein



## 4 Data and refinement statistics

Property	Value	Source
Space group	P 41 21 2	Depositor
Cell constants a, b, c, $\alpha$ , $\beta$ , $\gamma$	64.81Å 64.81Å 246.71Å 90.00° 90.00° 90.00°	Depositor
Resolution (Å)	62.68 – 2.40 40.03 – 2.40	Depositor EDS
% Data completeness (in resolution range)	99.4 (62.68-2.40) 99.4 (40.03-2.40)	Depositor EDS
$R_{merge}$	0.12	Depositor
$R_{sym}$	(Not available)	Depositor
$\langle I/\sigma(I) \rangle$ <sup>1</sup>	3.03 (at 2.39Å)	Xtriage
Refinement program	REFMAC 5.8.0073	Depositor
R, $R_{free}$	0.198 , 0.269 0.204 , 0.275	Depositor DCC
$R_{free}$ test set	1092 reflections (5.11%)	wwPDB-VP
Wilson B-factor (Å <sup>2</sup> )	37.6	Xtriage
Anisotropy	0.532	Xtriage
Bulk solvent $k_{sol}$ (e/Å <sup>3</sup> ), $B_{sol}$ (Å <sup>2</sup> )	0.31 , 43.6	EDS
L-test for twinning <sup>2</sup>	$\langle  L  \rangle = 0.49$ , $\langle L^2 \rangle = 0.32$	Xtriage
Estimated twinning fraction	No twinning to report.	Xtriage
$F_o, F_c$ correlation	0.94	EDS
Total number of atoms	3214	wwPDB-VP
Average B, all atoms (Å <sup>2</sup> )	67.0	wwPDB-VP

Xtriage's analysis on translational NCS is as follows: *The largest off-origin peak in the Patterson function is 5.12% of the height of the origin peak. No significant pseudotranslation is detected.*

<sup>1</sup>Intensities estimated from amplitudes.

<sup>2</sup>Theoretical values of  $\langle |L| \rangle$ ,  $\langle L^2 \rangle$  for acentric reflections are 0.5, 0.333 respectively for untwinned datasets, and 0.375, 0.2 for perfectly twinned datasets.

## 5 Model quality ⓘ

### 5.1 Standard geometry ⓘ

Bond lengths and bond angles in the following residue types are not validated in this section: MPD, IOD

The Z score for a bond length (or angle) is the number of standard deviations the observed value is removed from the expected value. A bond length (or angle) with  $|Z| > 5$  is considered an outlier worth inspection. RMSZ is the root-mean-square of all Z scores of the bond lengths (or angles).

Mol	Chain	Bond lengths		Bond angles	
		RMSZ	$\# Z  > 5$	RMSZ	$\# Z  > 5$
1	A	0.88	1/2594 (0.0%)	1.17	20/3519 (0.6%)
2	B	0.83	1/320 (0.3%)	1.23	1/492 (0.2%)
3	C	0.76	0/323	1.03	1/498 (0.2%)
All	All	0.86	2/3237 (0.1%)	1.16	22/4509 (0.5%)

All (2) bond length outliers are listed below:

Mol	Chain	Res	Type	Atoms	Z	Observed(Å)	Ideal(Å)
1	A	55	ARG	CZ-NH2	-5.39	1.26	1.33
2	B	321	DA	O3'-P	-5.20	1.54	1.61

All (22) bond angle outliers are listed below:

Mol	Chain	Res	Type	Atoms	Z	Observed(°)	Ideal(°)
1	A	232	ARG	NE-CZ-NH2	-14.22	113.19	120.30
1	A	232	ARG	NE-CZ-NH1	13.34	126.97	120.30
1	A	145	ARG	NE-CZ-NH1	11.99	126.29	120.30
1	A	302	ARG	NE-CZ-NH2	-11.87	114.36	120.30
2	B	323	DA	C1'-O4'-C4'	-10.94	99.16	110.10
1	A	302	ARG	NE-CZ-NH1	8.86	124.73	120.30
1	A	218	ASP	CB-CG-OD1	7.37	124.93	118.30
1	A	9	ARG	NE-CZ-NH2	6.36	123.48	120.30
1	A	297	ARG	NE-CZ-NH1	6.35	123.48	120.30
1	A	299	ILE	CB-CA-C	-6.24	99.13	111.60
1	A	214	ARG	NE-CZ-NH1	6.21	123.40	120.30
1	A	302	ARG	CG-CD-NE	-6.14	98.91	111.80
1	A	71	LEU	CB-CG-CD1	6.05	121.29	111.00
1	A	145	ARG	NE-CZ-NH2	-6.04	117.28	120.30
1	A	21	LEU	CA-CB-CG	5.99	129.06	115.30
1	A	168	LEU	CA-CB-CG	5.94	128.97	115.30

*Continued on next page...*

*Continued from previous page...*

Mol	Chain	Res	Type	Atoms	Z	Observed(°)	Ideal(°)
1	A	189	GLN	CA-CB-CG	5.85	126.28	113.40
1	A	214	ARG	NE-CZ-NH2	-5.65	117.47	120.30
1	A	281	ASP	CB-CG-OD1	5.36	123.12	118.30
1	A	65	ASP	CB-CG-OD1	5.30	123.07	118.30
1	A	297	ARG	NE-CZ-NH2	-5.29	117.66	120.30
3	C	338	DA	C1'-O4'-C4'	-5.17	104.93	110.10

There are no chirality outliers.

There are no planarity outliers.

## 5.2 Too-close contacts ⓘ

In the following table, the Non-H and H(model) columns list the number of non-hydrogen atoms and hydrogen atoms in the chain respectively. The H(added) column lists the number of hydrogen atoms added and optimized by MolProbity. The Clashes column lists the number of clashes within the asymmetric unit, whereas Symm-Clashes lists symmetry related clashes.

Mol	Chain	Non-H	H(model)	H(added)	Clashes	Symm-Clashes
1	A	2530	0	2570	66	0
2	B	285	0	160	3	0
3	C	289	0	161	1	0
4	A	6	0	0	1	0
5	A	8	0	14	3	0
6	A	72	0	0	6	0
6	B	13	0	0	1	0
6	C	11	0	0	2	0
All	All	3214	0	2905	72	0

The all-atom clashscore is defined as the number of clashes found per 1000 atoms (including hydrogen atoms). The all-atom clashscore for this structure is 12.

All (72) close contacts within the same asymmetric unit are listed below, sorted by their clash magnitude.

Atom-1	Atom-2	Interatomic distance (Å)	Clash overlap (Å)
1:A:199:SER:HB3	1:A:205:ARG:HA	1.20	1.15
1:A:200:VAL:HG13	1:A:201:ALA:H	1.12	1.10
1:A:200:VAL:HG11	1:A:208:TRP:CE3	1.96	0.99
1:A:217:GLN:NE2	6:A:1101:HOH:O	1.90	0.92
1:A:194:LEU:O	1:A:196:SER:N	2.03	0.91
1:A:200:VAL:HG13	1:A:201:ALA:N	1.85	0.91

*Continued on next page...*

*Continued from previous page...*

Atom-1	Atom-2	Interatomic distance (Å)	Clash overlap (Å)
1:A:80:GLN:NE2	1:A:80:GLN:H	1.73	0.87
1:A:80:GLN:HE21	1:A:80:GLN:H	0.90	0.85
1:A:199:SER:CB	1:A:205:ARG:HA	2.05	0.84
1:A:80:GLN:HE21	1:A:80:GLN:N	1.74	0.84
1:A:199:SER:HB3	1:A:205:ARG:CA	2.08	0.80
1:A:201:ALA:HB1	1:A:202:PRO:HD3	1.67	0.76
1:A:75[A]:ARG:NE	6:A:1162:HOH:O	2.19	0.75
5:A:1007:MPD:H31	6:C:403:HOH:O	1.86	0.75
1:A:211:LYS:HE3	6:A:1169:HOH:O	1.88	0.73
1:A:144:HIS:HE1	1:A:150:LEU:O	1.72	0.72
1:A:228:LEU:HD22	1:A:299:ILE:HD11	1.71	0.72
1:A:201:ALA:CB	1:A:202:PRO:CD	2.68	0.71
1:A:29:GLU:HG3	6:A:1113:HOH:O	1.91	0.71
1:A:201:ALA:CB	1:A:202:PRO:HD3	2.20	0.70
1:A:20:GLU:OE2	1:A:113:HIS:HE1	1.73	0.70
1:A:196:SER:HB2	1:A:197:PRO:HD3	1.74	0.69
1:A:78:PHE:HB3	1:A:80:GLN:NE2	2.08	0.69
1:A:232:ARG:NH2	3:C:333:DG:N7	2.40	0.68
1:A:77:LEU:H	1:A:81:GLN:HE22	1.43	0.66
1:A:31:HIS:HD2	1:A:101:GLN:O	1.80	0.64
2:B:316:DA:OP2	6:B:409:HOH:O	2.15	0.63
5:A:1007:MPD:H11	5:A:1007:MPD:H53	1.80	0.62
1:A:211:LYS:HB3	6:A:1169:HOH:O	1.98	0.62
1:A:12:THR:HG22	1:A:16:GLN:HE21	1.63	0.62
2:B:316:DA:H2''	2:B:317:DC:O5'	2.01	0.60
1:A:37:ARG:HH11	1:A:60:GLN:NE2	2.00	0.59
1:A:39:PHE:HE1	1:A:60:GLN:HE21	1.50	0.59
1:A:141:GLU:HG3	1:A:141:GLU:O	2.03	0.58
1:A:201:ALA:HB3	1:A:202:PRO:CD	2.34	0.57
1:A:228:LEU:CD2	1:A:299:ILE:HD11	2.35	0.56
1:A:15:ARG:HD2	4:A:1006:IOD:I	2.77	0.55
1:A:24:PHE:HB2	1:A:113:HIS:CD2	2.42	0.54
1:A:200:VAL:CG1	1:A:201:ALA:N	2.61	0.54
1:A:200:VAL:CG1	1:A:208:TRP:CE3	2.83	0.54
1:A:36:ALA:O	1:A:62:LEU:HA	2.07	0.54
1:A:210:ARG:HD3	6:A:1166:HOH:O	2.07	0.53
1:A:37:ARG:NH1	1:A:60:GLN:NE2	2.55	0.53
1:A:20:GLU:OE2	1:A:113:HIS:CE1	2.59	0.53
1:A:78:PHE:H	1:A:81:GLN:NE2	2.05	0.53
1:A:46:LYS:O	1:A:49:GLU:HB2	2.09	0.52
1:A:208:TRP:NE1	1:A:212:LEU:HD11	2.25	0.52

*Continued on next page...*

Continued from previous page...

Atom-1	Atom-2	Interatomic distance (Å)	Clash overlap (Å)
5:A:1007:MPD:C3	6:C:403:HOH:O	2.51	0.52
1:A:140:PHE:O	1:A:144:HIS:HD2	1.94	0.51
1:A:178:ILE:HA	1:A:230:ILE:O	2.11	0.50
1:A:200:VAL:HG11	1:A:208:TRP:CZ3	2.46	0.50
1:A:144:HIS:CE1	1:A:150:LEU:O	2.61	0.50
1:A:78:PHE:HB3	1:A:80:GLN:HE22	1.75	0.49
1:A:111:VAL:HG21	1:A:163:HIS:HE1	1.76	0.49
1:A:173:ALA:HB2	1:A:239:ILE:HD13	1.95	0.49
1:A:76:HIS:CE1	1:A:82:GLN:OE1	2.68	0.47
1:A:77:LEU:H	1:A:81:GLN:NE2	2.11	0.46
1:A:50:HIS:HE1	1:A:89:LYS:NZ	2.13	0.46
1:A:219:ILE:O	1:A:222:LEU:HB2	2.15	0.46
1:A:31:HIS:CD2	1:A:101:GLN:O	2.66	0.45
2:B:322:DT:H2''	2:B:323:DA:H5'	1.99	0.45
1:A:215:GLU:OE2	1:A:302:ARG:HD3	2.17	0.44
1:A:12:THR:CG2	1:A:16:GLN:HE21	2.31	0.44
1:A:111:VAL:CG2	1:A:163:HIS:HE1	2.30	0.43
1:A:203:TRP:CH2	1:A:211:LYS:HE2	2.53	0.43
1:A:37:ARG:NH1	1:A:60:GLN:HE22	2.16	0.43
1:A:9:ARG:HH21	1:A:131:GLU:CD	2.22	0.43
1:A:200:VAL:CG1	1:A:201:ALA:H	1.98	0.42
1:A:140:PHE:O	1:A:144:HIS:CD2	2.73	0.42
1:A:198:ARG:NE	1:A:199:SER:H	2.18	0.41
1:A:198:ARG:CD	1:A:199:SER:H	2.34	0.41
1:A:9:ARG:NH2	1:A:131:GLU:OE2	2.54	0.40

There are no symmetry-related clashes.

## 5.3 Torsion angles ⓘ

### 5.3.1 Protein backbone ⓘ

In the following table, the Percentiles column shows the percent Ramachandran outliers of the chain as a percentile score with respect to all X-ray entries followed by that with respect to entries of similar resolution.

The Analysed column shows the number of residues for which the backbone conformation was analysed, and the total number of residues.

Mol	Chain	Analysed	Favoured	Allowed	Outliers	Percentiles
1	A	308/316 (98%)	293 (95%)	8 (3%)	7 (2%)	6 7

All (7) Ramachandran outliers are listed below:

Mol	Chain	Res	Type
1	A	195	LYS
1	A	197	PRO
1	A	200	VAL
1	A	201	ALA
1	A	194	LEU
1	A	198	ARG
1	A	196	SER

### 5.3.2 Protein sidechains [i](#)

In the following table, the Percentiles column shows the percent sidechain outliers of the chain as a percentile score with respect to all X-ray entries followed by that with respect to entries of similar resolution.

The Analysed column shows the number of residues for which the sidechain conformation was analysed, and the total number of residues.

Mol	Chain	Analysed	Rotameric	Outliers	Percentiles
1	A	273/280 (98%)	243 (89%)	30 (11%)	<b>6</b> <b>8</b>

All (30) residues with a non-rotameric sidechain are listed below:

Mol	Chain	Res	Type
1	A	6	LEU
1	A	21	LEU
1	A	28	LEU
1	A	41	LEU
1	A	46	LYS
1	A	53	LEU
1	A	55	ARG
1	A	71	LEU
1	A	77	LEU
1	A	79	ILE
1	A	80	GLN
1	A	83	SER
1	A	98	LEU
1	A	112	SER
1	A	141	GLU
1	A	168	LEU
1	A	177	ILE
1	A	187	LEU

*Continued on next page...*

*Continued from previous page...*

Mol	Chain	Res	Type
1	A	192	LYS
1	A	198	ARG
1	A	205	ARG
1	A	214	ARG
1	A	222	LEU
1	A	232	ARG
1	A	265	ARG
1	A	292	GLN
1	A	294	GLN
1	A	297	ARG
1	A	299	ILE
1	A	305	LEU

Some sidechains can be flipped to improve hydrogen bonding and reduce clashes. All (13) such sidechains are listed below:

Mol	Chain	Res	Type
1	A	16	GLN
1	A	31	HIS
1	A	50	HIS
1	A	51	ASN
1	A	60	GLN
1	A	64	ASN
1	A	67	GLN
1	A	80	GLN
1	A	81	GLN
1	A	85	ASN
1	A	113	HIS
1	A	144	HIS
1	A	163	HIS

### 5.3.3 RNA ⓘ

There are no RNA molecules in this entry.

## 5.4 Non-standard residues in protein, DNA, RNA chains ⓘ

There are no non-standard protein/DNA/RNA residues in this entry.

## 5.5 Carbohydrates

There are no carbohydrates in this entry.

## 5.6 Ligand geometry

Of 7 ligands modelled in this entry, 6 are monoatomic - leaving 1 for Mogul analysis.

In the following table, the Counts columns list the number of bonds (or angles) for which Mogul statistics could be retrieved, the number of bonds (or angles) that are observed in the model and the number of bonds (or angles) that are defined in the Chemical Component Dictionary. The Link column lists molecule types, if any, to which the group is linked. The Z score for a bond length (or angle) is the number of standard deviations the observed value is removed from the expected value. A bond length (or angle) with  $|Z| > 2$  is considered an outlier worth inspection. RMSZ is the root-mean-square of all Z scores of the bond lengths (or angles).

Mol	Type	Chain	Res	Link	Bond lengths			Bond angles		
					Counts	RMSZ	$\# Z  > 2$	Counts	RMSZ	$\# Z  > 2$
5	MPD	A	1007	-	7,7,7	1.57	1 (14%)	9,10,10	3.00	5 (55%)

In the following table, the Chirals column lists the number of chiral outliers, the number of chiral centers analysed, the number of these observed in the model and the number defined in the Chemical Component Dictionary. Similar counts are reported in the Torsion and Rings columns. '-' means no outliers of that kind were identified.

Mol	Type	Chain	Res	Link	Chirals	Torsions	Rings
5	MPD	A	1007	-	-	1/5/5/5	-

All (1) bond length outliers are listed below:

Mol	Chain	Res	Type	Atoms	Z	Observed(Å)	Ideal(Å)
5	A	1007	MPD	C1-C2	2.60	1.60	1.52

All (5) bond angle outliers are listed below:

Mol	Chain	Res	Type	Atoms	Z	Observed(°)	Ideal(°)
5	A	1007	MPD	O2-C2-CM	-5.86	89.27	108.08
5	A	1007	MPD	O2-C2-C3	-4.01	94.72	109.80
5	A	1007	MPD	CM-C2-C1	3.33	117.52	110.57
5	A	1007	MPD	CM-C2-C3	2.89	123.41	109.96
5	A	1007	MPD	O2-C2-C1	2.51	116.14	108.08

There are no chirality outliers.

All (1) torsion outliers are listed below:

Mol	Chain	Res	Type	Atoms
5	A	1007	MPD	C2-C3-C4-C5

There are no ring outliers.

1 monomer is involved in 3 short contacts:

Mol	Chain	Res	Type	Clashes	Symm-Clashes
5	A	1007	MPD	3	0

## 5.7 Other polymers [i](#)

There are no such residues in this entry.

## 5.8 Polymer linkage issues [i](#)

There are no chain breaks in this entry.

## 6 Fit of model and data ⓘ

### 6.1 Protein, DNA and RNA chains ⓘ

In the following table, the column labelled ‘#RSRZ> 2’ contains the number (and percentage) of RSRZ outliers, followed by percent RSRZ outliers for the chain as percentile scores relative to all X-ray entries and entries of similar resolution. The OWAB column contains the minimum, median, 95<sup>th</sup> percentile and maximum values of the occupancy-weighted average B-factor per residue. The column labelled ‘Q< 0.9’ lists the number of (and percentage) of residues with an average occupancy less than 0.9.

Mol	Chain	Analysed	<RSRZ>	#RSRZ>2			OWAB(Å²)	Q<0.9
1	A	307/316 (97%)	0.09	18 (5%)	22	21	47, 61, 103, 139	0
2	B	14/16 (87%)	0.14	1 (7%)	16	14	54, 63, 112, 175	0
3	C	15/16 (93%)	0.35	3 (20%)	1	0	50, 60, 112, 117	2 (13%)
All	All	336/348 (96%)	0.10	22 (6%)	18	17	47, 61, 110, 175	2 (0%)

All (22) RSRZ outliers are listed below:

Mol	Chain	Res	Type	RSRZ
1	A	199	SER	6.4
1	A	195	LYS	6.1
1	A	248	GLN	4.9
1	A	196	SER	4.8
2	B	324	DG	4.6
1	A	198	ARG	3.9
1	A	205	ARG	3.7
1	A	200	VAL	3.4
1	A	203	TRP	3.4
1	A	201	ALA	3.4
3	C	342	DA	3.3
1	A	202	PRO	2.8
1	A	5	ASP	2.7
1	A	85	ASN	2.7
3	C	329	DT	2.6
3	C	328	DG	2.6
1	A	292	GLN	2.4
1	A	4	TYR	2.3
1	A	194	LEU	2.3
1	A	46	LYS	2.3
1	A	206	GLU	2.2
1	A	75[A]	ARG	2.2

## 6.2 Non-standard residues in protein, DNA, RNA chains [i](#)

There are no non-standard protein/DNA/RNA residues in this entry.

## 6.3 Carbohydrates [i](#)

There are no carbohydrates in this entry.

## 6.4 Ligands [i](#)

In the following table, the Atoms column lists the number of modelled atoms in the group and the number defined in the chemical component dictionary. The B-factors column lists the minimum, median, 95<sup>th</sup> percentile and maximum values of B factors of atoms in the group. The column labelled 'Q< 0.9' lists the number of atoms with occupancy less than 0.9.

Mol	Type	Chain	Res	Atoms	RSCC	RSR	B-factors( $\text{\AA}^2$ )	Q<0.9
5	MPD	A	1007	8/8	0.74	0.30	46,59,71,79	0
4	IOD	A	1006	1/1	0.96	0.07	94,94,94,94	1
4	IOD	A	1004	1/1	0.96	0.13	90,90,90,90	1
4	IOD	A	1005	1/1	0.99	0.06	95,95,95,95	1
4	IOD	A	1002	1/1	0.99	0.18	68,68,68,68	1
4	IOD	A	1003	1/1	0.99	0.10	71,71,71,71	1
4	IOD	A	1001	1/1	1.00	0.12	62,62,62,62	0

## 6.5 Other polymers [i](#)

There are no such residues in this entry.