



Full wwPDB X-ray Structure Validation Report ⓘ

Oct 31, 2021 – 05:36 AM EDT

PDB ID : 1XS6
Title : dCTP deaminase from Escherichia coli. E138A mutant enzyme in complex with dUTP
Authors : Johansson, E.; Fano, M.; Bynck, J.H.; Neuhard, J.; Larsen, S.; Sigurskjold, B.W.; Christensen, U.; Willemoes, M.
Deposited on : 2004-10-18
Resolution : 2.00 Å(reported)

This is a Full wwPDB X-ray Structure Validation Report for a publicly released PDB entry.

We welcome your comments at validation@mail.wwpdb.org

A user guide is available at

<https://www.wwpdb.org/validation/2017/XrayValidationReportHelp>

with specific help available everywhere you see the ⓘ symbol.

The following versions of software and data (see [references ⓘ](#)) were used in the production of this report:

MolProbity : 4.02b-467
Mogul : 1.8.5 (274361), CSD as541be (2020)
Xtriage (Phenix) : 1.13
EDS : 2.23.2
buster-report : 1.1.7 (2018)
Percentile statistics : 20191225.v01 (using entries in the PDB archive December 25th 2019)
Refmac : 5.8.0158
CCP4 : 7.0.044 (Gargrove)
Ideal geometry (proteins) : Engh & Huber (2001)
Ideal geometry (DNA, RNA) : Parkinson et al. (1996)
Validation Pipeline (wwPDB-VP) : 2.23.2

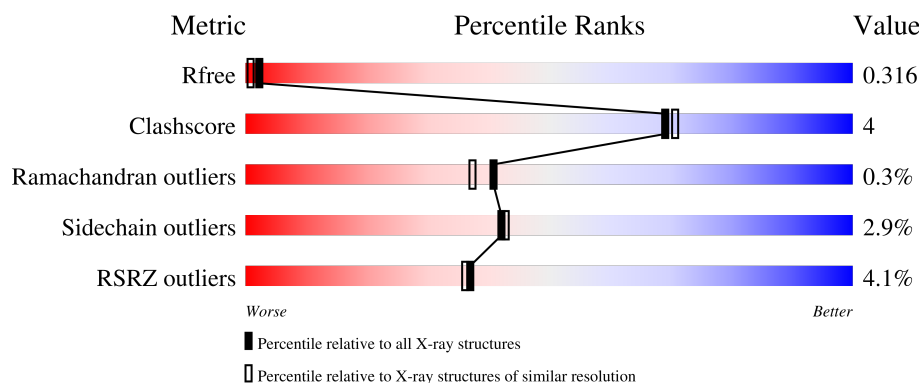
1 Overall quality at a glance

The following experimental techniques were used to determine the structure:

X-RAY DIFFRACTION

The reported resolution of this entry is 2.00 Å.

Percentile scores (ranging between 0-100) for global validation metrics of the entry are shown in the following graphic. The table shows the number of entries on which the scores are based.



Metric	Whole archive (#Entries)	Similar resolution (#Entries, resolution range(Å))
R_{free}	130704	8085 (2.00-2.00)
Clashscore	141614	9178 (2.00-2.00)
Ramachandran outliers	138981	9054 (2.00-2.00)
Sidechain outliers	138945	9053 (2.00-2.00)
RSRZ outliers	127900	7900 (2.00-2.00)

The table below summarises the geometric issues observed across the polymeric chains and their fit to the electron density. The red, orange, yellow and green segments of the lower bar indicate the fraction of residues that contain outliers for ≥ 3 , 2, 1 and 0 types of geometric quality criteria respectively. A grey segment represents the fraction of residues that are not modelled. The numeric value for each fraction is indicated below the corresponding segment, with a dot representing fractions $\leq 5\%$. The upper red bar (where present) indicates the fraction of residues that have poor fit to the electron density. The numeric value is given above the bar.

Mol	Chain	Length	Quality of chain
1	A	193	<div> <div>5%</div> <div>84%</div> <div>14%</div> <div>.</div> </div>
1	B	193	<div> <div>6%</div> <div>93%</div> <div>6%</div> <div>.</div> </div>
1	C	193	<div> <div>3%</div> <div>85%</div> <div>14%</div> <div>..</div> </div>
1	D	193	<div> <div>5%</div> <div>89%</div> <div>9%</div> <div>.</div> </div>
1	E	193	<div> <div>3%</div> <div>86%</div> <div>12%</div> <div>.</div> </div>

Continued on next page...

Continued from previous page...

Mol	Chain	Length	Quality of chain
1	F	193	<div><div></div><div>3%</div><div>83%</div><div>16%</div><div></div></div>

2 Entry composition

There are 4 unique types of molecules in this entry. The entry contains 9518 atoms, of which 0 are hydrogens and 0 are deuteriums.

In the tables below, the ZeroOcc column contains the number of atoms modelled with zero occupancy, the AltConf column contains the number of residues with at least one atom in alternate conformation and the Trace column contains the number of residues modelled with at most 2 atoms.

- Molecule 1 is a protein called Deoxycytidine triphosphate deaminase.

Mol	Chain	Residues	Atoms					ZeroOcc	AltConf	Trace
1	A	193	Total	C	N	O	S	0	0	0
			1492	939	271	276	6			
1	B	193	Total	C	N	O	S	0	0	0
			1492	939	271	276	6			
1	C	193	Total	C	N	O	S	0	0	0
			1492	939	271	276	6			
1	D	193	Total	C	N	O	S	0	0	0
			1492	939	271	276	6			
1	E	193	Total	C	N	O	S	0	0	0
			1492	939	271	276	6			
1	F	193	Total	C	N	O	S	0	0	0
			1492	939	271	276	6			

There are 6 discrepancies between the modelled and reference sequences:

Chain	Residue	Modelled	Actual	Comment	Reference
A	138	ALA	GLU	engineered mutation	UNP P28248
B	138	ALA	GLU	engineered mutation	UNP P28248
C	138	ALA	GLU	engineered mutation	UNP P28248
D	138	ALA	GLU	engineered mutation	UNP P28248
E	138	ALA	GLU	engineered mutation	UNP P28248
F	138	ALA	GLU	engineered mutation	UNP P28248

- Molecule 2 is MAGNESIUM ION (three-letter code: MG) (formula: Mg).

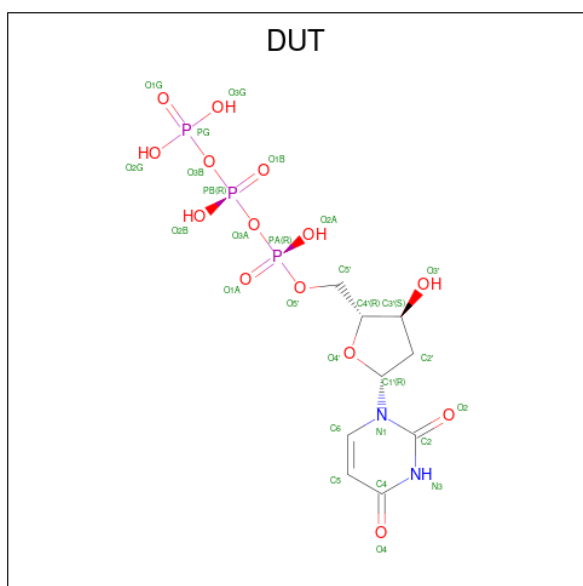
Mol	Chain	Residues	Atoms		ZeroOcc	AltConf
2	A	1	Total	Mg	0	0
			1	1		
2	B	1	Total	Mg	0	0
			1	1		
2	C	1	Total	Mg	0	0
			1	1		

Continued on next page...

Continued from previous page...

Mol	Chain	Residues	Atoms		ZeroOcc	AltConf
2	D	2	Total	Mg	0	0
			2	2		
2	E	1	Total	Mg	0	0
			1	1		
2	F	1	Total	Mg	0	0
			1	1		

- Molecule 3 is DEOXYURIDINE-5'-TRIPHOSPHATE (three-letter code: DUT) (formula: $C_9H_{15}N_2O_{14}P_3$).



Mol	Chain	Residues	Atoms					ZeroOcc	AltConf
3	A	1	Total	C	N	O	P	0	0
			28	9	2	14	3		
3	B	1	Total	C	N	O	P	0	0
			28	9	2	14	3		
3	C	1	Total	C	N	O	P	0	0
			28	9	2	14	3		
3	D	1	Total	C	N	O	P	0	0
			28	9	2	14	3		
3	E	1	Total	C	N	O	P	0	0
			28	9	2	14	3		
3	F	1	Total	C	N	O	P	0	0
			28	9	2	14	3		

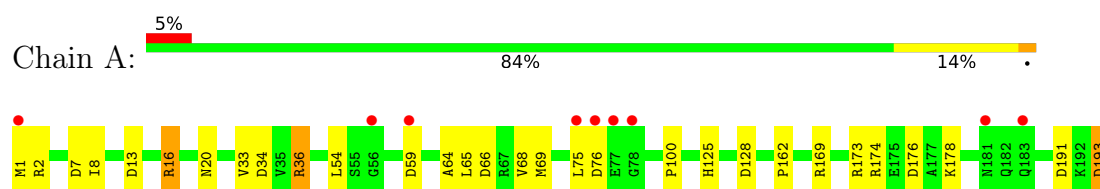
- Molecule 4 is water.

Mol	Chain	Residues	Atoms		ZeroOcc	AltConf
4	A	56	Total 56	O 56	0	0
4	B	61	Total 61	O 61	0	0
4	C	63	Total 63	O 63	0	0
4	D	76	Total 76	O 76	0	0
4	E	71	Total 71	O 71	0	0
4	F	64	Total 64	O 64	0	0

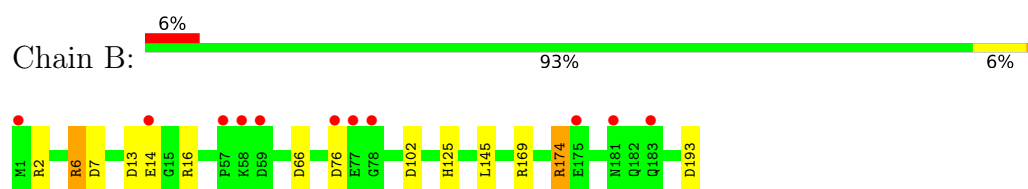
3 Residue-property plots [i](#)

These plots are drawn for all protein, RNA, DNA and oligosaccharide chains in the entry. The first graphic for a chain summarises the proportions of the various outlier classes displayed in the second graphic. The second graphic shows the sequence view annotated by issues in geometry and electron density. Residues are color-coded according to the number of geometric quality criteria for which they contain at least one outlier: green = 0, yellow = 1, orange = 2 and red = 3 or more. A red dot above a residue indicates a poor fit to the electron density ($RSRZ > 2$). Stretches of 2 or more consecutive residues without any outlier are shown as a green connector. Residues present in the sample, but not in the model, are shown in grey.

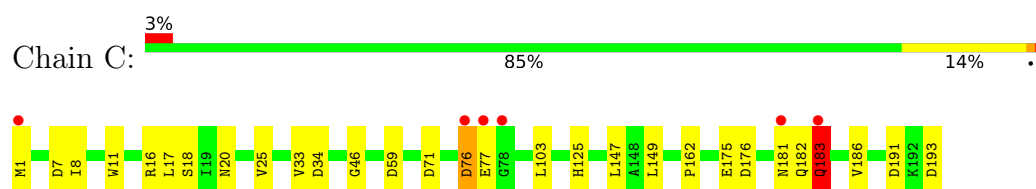
- Molecule 1: Deoxycytidine triphosphate deaminase



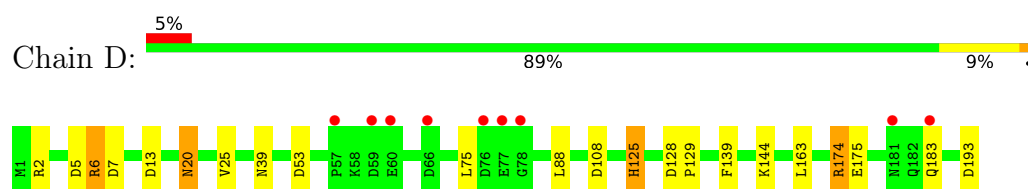
- Molecule 1: Deoxycytidine triphosphate deaminase



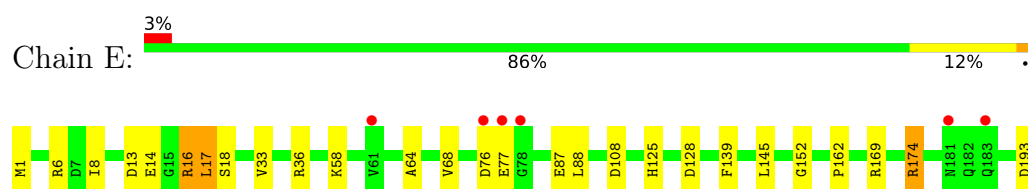
- Molecule 1: Deoxycytidine triphosphate deaminase



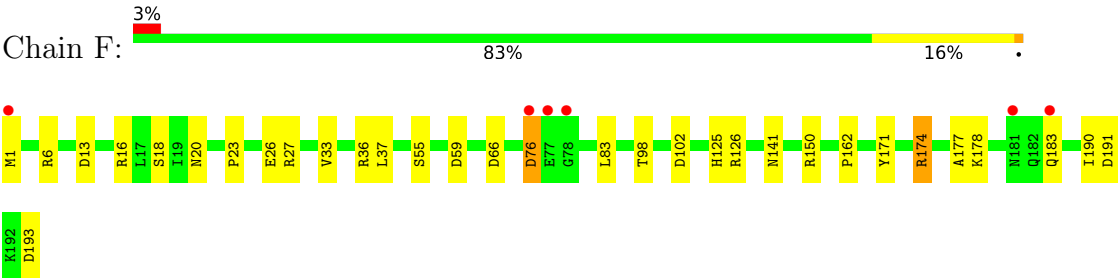
- Molecule 1: Deoxycytidine triphosphate deaminase



- Molecule 1: Deoxycytidine triphosphate deaminase



- Molecule 1: Deoxycytidine triphosphate deaminase



4 Data and refinement statistics

Property	Value	Source
Space group	C 1 2 1	Depositor
Cell constants a, b, c, α , β , γ	179.93Å 63.07Å 96.36Å 90.00° 102.18° 90.00°	Depositor
Resolution (Å)	25.00 – 2.00 24.34 – 2.00	Depositor EDS
% Data completeness (in resolution range)	97.1 (25.00-2.00) 97.1 (24.34-2.00)	Depositor EDS
R_{merge}	(Not available)	Depositor
R_{sym}	0.11	Depositor
$\langle I/\sigma(I) \rangle$ ¹	2.49 (at 1.99Å)	Xtriage
Refinement program	REFMAC 5.2.0001	Depositor
R, R_{free}	0.258 , 0.313 0.264 , 0.316	Depositor DCC
R_{free} test set	3527 reflections (5.07%)	wwPDB-VP
Wilson B-factor (Å ²)	21.5	Xtriage
Anisotropy	0.403	Xtriage
Bulk solvent k_{sol} (e/Å ³), B_{sol} (Å ²)	0.37 , 49.9	EDS
L-test for twinning ²	$\langle L \rangle = 0.49$, $\langle L^2 \rangle = 0.33$	Xtriage
Estimated twinning fraction	No twinning to report.	Xtriage
F_o, F_c correlation	0.93	EDS
Total number of atoms	9518	wwPDB-VP
Average B, all atoms (Å ²)	20.0	wwPDB-VP

Xtriage's analysis on translational NCS is as follows: *The analyses of the Patterson function reveals a significant off-origin peak that is 82.99 % of the origin peak, indicating pseudo-translational symmetry. The chance of finding a peak of this or larger height randomly in a structure without pseudo-translational symmetry is equal to 2.4276e-07. The detected translational NCS is most likely also responsible for the elevated intensity ratio.*

¹Intensities estimated from amplitudes.

²Theoretical values of $\langle |L| \rangle$, $\langle L^2 \rangle$ for acentric reflections are 0.5, 0.333 respectively for untwinned datasets, and 0.375, 0.2 for perfectly twinned datasets.

5 Model quality

5.1 Standard geometry

Bond lengths and bond angles in the following residue types are not validated in this section: MG, DUT

The Z score for a bond length (or angle) is the number of standard deviations the observed value is removed from the expected value. A bond length (or angle) with $|Z| > 5$ is considered an outlier worth inspection. RMSZ is the root-mean-square of all Z scores of the bond lengths (or angles).

Mol	Chain	Bond lengths		Bond angles	
		RMSZ	$\# Z > 5$	RMSZ	$\# Z > 5$
1	A	0.65	0/1523	0.94	12/2065 (0.6%)
1	B	0.64	0/1523	0.99	14/2065 (0.7%)
1	C	0.65	0/1523	0.94	6/2065 (0.3%)
1	D	0.65	0/1523	0.98	10/2065 (0.5%)
1	E	0.65	0/1523	0.94	9/2065 (0.4%)
1	F	0.65	0/1523	0.97	10/2065 (0.5%)
All	All	0.65	0/9138	0.96	61/12390 (0.5%)

Chiral center outliers are detected by calculating the chiral volume of a chiral center and verifying if the center is modelled as a planar moiety or with the opposite hand. A planarity outlier is detected by checking planarity of atoms in a peptide group, atoms in a mainchain group or atoms of a sidechain that are expected to be planar.

Mol	Chain	#Chirality outliers	#Planarity outliers
1	C	0	1

There are no bond length outliers.

All (61) bond angle outliers are listed below:

Mol	Chain	Res	Type	Atoms	Z	Observed(°)	Ideal(°)
1	C	193	ASP	CB-CG-OD2	8.90	126.31	118.30
1	B	6	ARG	NE-CZ-NH2	-8.24	116.18	120.30
1	E	174	ARG	NE-CZ-NH2	-8.12	116.24	120.30
1	B	174	ARG	NE-CZ-NH2	-7.96	116.32	120.30
1	E	174	ARG	NE-CZ-NH1	7.81	124.20	120.30
1	B	76	ASP	CB-CG-OD2	7.60	125.14	118.30
1	D	174	ARG	NE-CZ-NH2	-7.36	116.62	120.30
1	A	13	ASP	CB-CG-OD2	7.28	124.86	118.30
1	D	128	ASP	CB-CG-OD2	7.25	124.82	118.30
1	E	169	ARG	NE-CZ-NH2	-7.07	116.77	120.30

Continued on next page...

Continued from previous page...

Mol	Chain	Res	Type	Atoms	Z	Observed(°)	Ideal(°)
1	F	174	ARG	NE-CZ-NH1	7.01	123.81	120.30
1	F	13	ASP	CB-CG-OD2	7.00	124.60	118.30
1	B	2	ARG	NE-CZ-NH1	6.82	123.71	120.30
1	F	66	ASP	CB-CG-OD2	6.53	124.18	118.30
1	A	59	ASP	CB-CG-OD2	6.53	124.17	118.30
1	A	193	ASP	CB-CG-OD2	6.52	124.17	118.30
1	A	7	ASP	CB-CG-OD2	6.48	124.14	118.30
1	B	2	ARG	NE-CZ-NH2	-6.44	117.08	120.30
1	F	76	ASP	CB-CG-OD2	6.42	124.08	118.30
1	E	169	ARG	NE-CZ-NH1	6.30	123.45	120.30
1	B	6	ARG	NE-CZ-NH1	6.24	123.42	120.30
1	D	7	ASP	CB-CG-OD2	6.22	123.89	118.30
1	B	193	ASP	CB-CG-OD2	6.16	123.85	118.30
1	A	66	ASP	CB-CG-OD2	6.09	123.79	118.30
1	E	13	ASP	CB-CG-OD2	6.05	123.75	118.30
1	E	76	ASP	CB-CG-OD2	6.04	123.74	118.30
1	E	128	ASP	CB-CG-OD2	6.03	123.73	118.30
1	B	7	ASP	CB-CG-OD2	5.97	123.67	118.30
1	A	169	ARG	NE-CZ-NH2	-5.92	117.34	120.30
1	B	169	ARG	NE-CZ-NH2	-5.87	117.37	120.30
1	A	128	ASP	CB-CG-OD2	5.85	123.56	118.30
1	C	76	ASP	CB-CG-OD2	5.83	123.54	118.30
1	D	5	ASP	CB-CG-OD1	5.81	123.53	118.30
1	D	2	ARG	NE-CZ-NH2	-5.78	117.41	120.30
1	B	102	ASP	CB-CG-OD2	5.77	123.49	118.30
1	F	193	ASP	CB-CG-OD2	5.72	123.45	118.30
1	C	191	ASP	CB-CG-OD2	5.69	123.42	118.30
1	D	13	ASP	CB-CG-OD2	5.69	123.42	118.30
1	B	169	ARG	NE-CZ-NH1	5.66	123.13	120.30
1	D	108	ASP	CB-CG-OD2	5.64	123.38	118.30
1	E	193	ASP	CB-CG-OD2	5.61	123.35	118.30
1	C	71	ASP	CB-CG-OD2	5.59	123.33	118.30
1	B	174	ARG	NE-CZ-NH1	5.57	123.08	120.30
1	C	7	ASP	CB-CG-OD2	5.50	123.25	118.30
1	F	126	ARG	NE-CZ-NH1	5.49	123.04	120.30
1	C	34	ASP	CB-CG-OD2	5.44	123.19	118.30
1	A	2	ARG	NE-CZ-NH1	5.36	122.98	120.30
1	F	102	ASP	CB-CG-OD2	5.34	123.10	118.30
1	B	66	ASP	CB-CG-OD2	5.33	123.09	118.30
1	A	176	ASP	CB-CG-OD2	5.32	123.08	118.30
1	B	13	ASP	CB-CG-OD2	5.31	123.08	118.30
1	D	193	ASP	CB-CG-OD2	5.27	123.04	118.30

Continued on next page...

Continued from previous page...

Mol	Chain	Res	Type	Atoms	Z	Observed(°)	Ideal(°)
1	F	191	ASP	CB-CG-OD2	5.26	123.03	118.30
1	F	174	ARG	NE-CZ-NH2	-5.24	117.68	120.30
1	A	34	ASP	CB-CG-OD2	5.22	123.00	118.30
1	D	2	ARG	NE-CZ-NH1	5.10	122.85	120.30
1	E	108	ASP	CB-CG-OD2	5.07	122.86	118.30
1	F	59	ASP	CB-CG-OD2	5.06	122.86	118.30
1	A	191	ASP	CB-CG-OD2	5.05	122.84	118.30
1	A	76	ASP	CB-CG-OD2	5.03	122.82	118.30
1	D	174	ARG	NE-CZ-NH1	5.00	122.80	120.30

There are no chirality outliers.

All (1) planarity outliers are listed below:

Mol	Chain	Res	Type	Group
1	C	76	ASP	Peptide

5.2 Too-close contacts

In the following table, the Non-H and H(model) columns list the number of non-hydrogen atoms and hydrogen atoms in the chain respectively. The H(added) column lists the number of hydrogen atoms added and optimized by MolProbity. The Clashes column lists the number of clashes within the asymmetric unit, whereas Symm-Clashes lists symmetry-related clashes.

Mol	Chain	Non-H	H(model)	H(added)	Clashes	Symm-Clashes
1	A	1492	0	1494	15	0
1	B	1492	0	1494	3	0
1	C	1492	0	1494	20	0
1	D	1492	0	1494	11	1
1	E	1492	0	1494	10	1
1	F	1492	0	1494	14	0
2	A	1	0	0	0	0
2	B	1	0	0	0	0
2	C	1	0	0	0	0
2	D	2	0	0	0	0
2	E	1	0	0	0	0
2	F	1	0	0	0	0
3	A	28	0	11	0	0
3	B	28	0	11	0	0
3	C	28	0	11	0	0
3	D	28	0	11	0	0
3	E	28	0	11	0	0

Continued on next page...

Continued from previous page...

Mol	Chain	Non-H	H(model)	H(added)	Clashes	Symm-Clashes
3	F	28	0	11	0	0
4	A	56	0	0	5	0
4	B	61	0	0	2	0
4	C	63	0	0	2	0
4	D	76	0	0	5	0
4	E	71	0	0	3	0
4	F	64	0	0	7	0
All	All	9518	0	9030	67	1

The all-atom clashscore is defined as the number of clashes found per 1000 atoms (including hydrogen atoms). The all-atom clashscore for this structure is 4.

All (67) close contacts within the same asymmetric unit are listed below, sorted by their clash magnitude.

Atom-1	Atom-2	Interatomic distance (Å)	Clash overlap (Å)
1:C:182:GLN:HA	1:C:183:GLN:HB2	1.39	1.04
1:F:20:ASN:ND2	4:F:6208:HOH:O	1.97	0.95
1:A:75:LEU:O	4:A:2231:HOH:O	1.89	0.89
1:A:174:ARG:HD2	4:A:2246:HOH:O	1.77	0.85
1:D:183:GLN:OE1	1:D:183:GLN:N	2.14	0.80
1:F:37:LEU:HA	4:F:6237:HOH:O	1.81	0.80
1:A:174:ARG:CD	4:A:2246:HOH:O	2.34	0.75
1:D:25:VAL:HG22	4:D:5228:HOH:O	1.90	0.72
1:F:36:ARG:HD2	4:F:6210:HOH:O	1.91	0.69
1:C:182:GLN:CA	1:C:183:GLN:HB2	2.19	0.69
1:A:178:LYS:NZ	1:A:193:ASP:OD2	2.24	0.68
1:E:6:ARG:NH2	4:E:6257:HOH:O	2.28	0.67
1:C:182:GLN:HA	1:C:183:GLN:CB	2.20	0.66
1:A:20:ASN:ND2	4:A:2208:HOH:O	2.30	0.65
1:E:1:MET:CE	1:E:162:PRO:HG2	2.30	0.62
1:D:20:ASN:ND2	4:D:5226:HOH:O	2.33	0.60
1:C:25:VAL:HG22	4:C:3222:HOH:O	2.01	0.60
1:A:36:ARG:HD3	4:A:2238:HOH:O	2.01	0.60
1:F:36:ARG:CD	4:F:6210:HOH:O	2.47	0.59
1:D:129:PRO:HG3	1:D:163:LEU:HD11	1.83	0.59
1:E:14:GLU:OE2	1:E:16:ARG:NH2	2.35	0.59
1:D:174:ARG:NH2	4:D:5212:HOH:O	2.36	0.58
1:D:6:ARG:NH2	4:D:5272:HOH:O	2.35	0.58
1:C:1:MET:CE	1:C:162:PRO:HG2	2.34	0.58
1:A:54:LEU:HD21	1:C:147:LEU:HD22	1.85	0.57
1:A:1:MET:HE1	1:A:162:PRO:HG2	1.87	0.57

Continued on next page...

Continued from previous page...

Atom-1	Atom-2	Interatomic distance (Å)	Clash overlap (Å)
1:A:54:LEU:HD12	1:C:149:LEU:CD2	2.35	0.56
1:C:11:TRP:CZ3	1:C:103:LEU:HD22	2.41	0.56
1:D:6:ARG:CZ	4:D:5272:HOH:O	2.55	0.54
1:C:175:GLU:HG3	1:C:176:ASP:N	2.23	0.53
1:C:20:ASN:ND2	4:C:3202:HOH:O	2.34	0.53
1:D:88:LEU:HD12	1:D:139:PHE:O	2.09	0.53
1:D:39:ASN:OD1	1:D:75:LEU:HB2	2.09	0.52
1:F:174:ARG:CD	4:F:6250:HOH:O	2.57	0.52
1:D:53:ASP:OD1	1:F:150:ARG:NH1	2.42	0.52
1:E:17:LEU:HD12	1:E:18:SER:N	2.26	0.50
1:D:125:HIS:HD2	4:F:6226:HOH:O	1.95	0.50
1:C:1:MET:HE1	1:C:162:PRO:HG2	1.95	0.48
1:F:83:LEU:HD23	1:F:141:ASN:HB2	1.95	0.47
1:C:183:GLN:HB3	1:C:186:VAL:CG2	2.45	0.47
1:E:88:LEU:HD12	1:E:139:PHE:O	2.15	0.46
1:E:174:ARG:HD3	4:E:6238:HOH:O	2.14	0.46
1:F:171:TYR:CZ	1:F:177:ALA:HB1	2.51	0.46
1:F:174:ARG:HD2	4:F:6250:HOH:O	2.15	0.46
1:E:36:ARG:HD3	1:E:152:GLY:O	2.16	0.45
1:F:1:MET:CE	1:F:162:PRO:HG2	2.46	0.45
1:F:23:PRO:HG2	1:F:33:VAL:CG1	2.47	0.45
1:B:174:ARG:HD3	4:B:3229:HOH:O	2.17	0.45
1:E:174:ARG:CD	4:E:6238:HOH:O	2.64	0.45
1:C:11:TRP:HB3	1:C:17:LEU:CD2	2.46	0.45
1:A:16:ARG:O	1:A:100:PRO:HD3	2.16	0.44
1:E:8:ILE:HG21	1:E:33:VAL:CG2	2.47	0.44
1:C:18:SER:HB3	1:C:20:ASN:HD21	1.81	0.44
1:C:181:ASN:O	1:C:183:GLN:HG3	2.17	0.44
1:E:64:ALA:O	1:E:68:VAL:HG13	2.18	0.44
1:C:11:TRP:HB3	1:C:17:LEU:HD23	2.00	0.43
1:F:178:LYS:HZ3	1:F:190:ILE:HA	1.82	0.43
1:F:27:ARG:NE	1:F:27:ARG:HA	2.34	0.43
1:A:65:LEU:O	1:A:69:MET:HG2	2.20	0.42
1:A:54:LEU:HD12	1:C:149:LEU:HD23	2.02	0.41
1:B:145:LEU:HD11	1:C:46:GLY:HA2	2.03	0.41
1:B:6:ARG:CD	4:B:3249:HOH:O	2.68	0.41
1:F:18:SER:HB3	1:F:98:THR:HB	2.03	0.41
1:A:8:ILE:HD13	1:A:33:VAL:HG23	2.02	0.40
1:A:54:LEU:HD12	1:C:149:LEU:HD22	2.03	0.40
1:C:8:ILE:HG21	1:C:33:VAL:CG2	2.52	0.40
1:A:64:ALA:O	1:A:68:VAL:HG13	2.22	0.40

All (1) symmetry-related close contacts are listed below. The label for Atom-2 includes the symmetry operator and encoded unit-cell translations to be applied.

Atom-1	Atom-2	Interatomic distance (Å)	Clash overlap (Å)
1:D:144:LYS:NZ	1:E:87:GLU:OE2[2_657]	2.18	0.02

5.3 Torsion angles [i](#)

5.3.1 Protein backbone [i](#)

In the following table, the Percentiles column shows the percent Ramachandran outliers of the chain as a percentile score with respect to all X-ray entries followed by that with respect to entries of similar resolution.

The Analysed column shows the number of residues for which the backbone conformation was analysed, and the total number of residues.

Mol	Chain	Analysed	Favoured	Allowed	Outliers	Percentiles	
1	A	191/193 (99%)	187 (98%)	4 (2%)	0	100	100
1	B	191/193 (99%)	184 (96%)	7 (4%)	0	100	100
1	C	191/193 (99%)	184 (96%)	5 (3%)	2 (1%)	15	9
1	D	191/193 (99%)	183 (96%)	8 (4%)	0	100	100
1	E	191/193 (99%)	185 (97%)	5 (3%)	1 (0%)	29	23
1	F	191/193 (99%)	185 (97%)	6 (3%)	0	100	100
All	All	1146/1158 (99%)	1108 (97%)	35 (3%)	3 (0%)	41	37

All (3) Ramachandran outliers are listed below:

Mol	Chain	Res	Type
1	C	183	GLN
1	C	77	GLU
1	E	58	LYS

5.3.2 Protein sidechains [i](#)

In the following table, the Percentiles column shows the percent sidechain outliers of the chain as a percentile score with respect to all X-ray entries followed by that with respect to entries of similar resolution.

The Analysed column shows the number of residues for which the sidechain conformation was analysed, and the total number of residues.

Mol	Chain	Analysed	Rotameric	Outliers	Percentiles	
1	A	157/157 (100%)	153 (98%)	4 (2%)	47	49
1	B	157/157 (100%)	154 (98%)	3 (2%)	57	61
1	C	157/157 (100%)	153 (98%)	4 (2%)	47	49
1	D	157/157 (100%)	153 (98%)	4 (2%)	47	49
1	E	157/157 (100%)	152 (97%)	5 (3%)	39	38
1	F	157/157 (100%)	150 (96%)	7 (4%)	27	24
All	All	942/942 (100%)	915 (97%)	27 (3%)	42	43

All (27) residues with a non-rotameric sidechain are listed below:

Mol	Chain	Res	Type
1	A	16	ARG
1	A	36	ARG
1	A	125	HIS
1	A	173	ARG
1	B	14	GLU
1	B	16	ARG
1	B	125	HIS
1	C	16	ARG
1	C	59	ASP
1	C	125	HIS
1	C	183	GLN
1	D	6	ARG
1	D	20	ASN
1	D	125	HIS
1	D	175	GLU
1	E	16	ARG
1	E	17	LEU
1	E	77	GLU
1	E	125	HIS
1	E	145	LEU
1	F	6	ARG
1	F	16	ARG
1	F	26	GLU
1	F	55	SER
1	F	76	ASP
1	F	125	HIS
1	F	183	GLN

Sometimes sidechains can be flipped to improve hydrogen bonding and reduce clashes. All (4) such sidechains are listed below:

Mol	Chain	Res	Type
1	C	183	GLN
1	D	20	ASN
1	D	125	HIS
1	F	20	ASN

5.3.3 RNA [i](#)

There are no RNA molecules in this entry.

5.4 Non-standard residues in protein, DNA, RNA chains [i](#)

There are no non-standard protein/DNA/RNA residues in this entry.

5.5 Carbohydrates [i](#)

There are no monosaccharides in this entry.

5.6 Ligand geometry [i](#)

Of 13 ligands modelled in this entry, 7 are monoatomic - leaving 6 for Mogul analysis.

In the following table, the Counts columns list the number of bonds (or angles) for which Mogul statistics could be retrieved, the number of bonds (or angles) that are observed in the model and the number of bonds (or angles) that are defined in the Chemical Component Dictionary. The Link column lists molecule types, if any, to which the group is linked. The Z score for a bond length (or angle) is the number of standard deviations the observed value is removed from the expected value. A bond length (or angle) with $|Z| > 2$ is considered an outlier worth inspection. RMSZ is the root-mean-square of all Z scores of the bond lengths (or angles).

Mol	Type	Chain	Res	Link	Bond lengths			Bond angles		
					Counts	RMSZ	# Z > 2	Counts	RMSZ	# Z > 2
3	DUT	A	1194	2	22,29,29	0.87	1 (4%)	27,45,45	1.32	3 (11%)
3	DUT	C	3194	2	22,29,29	0.86	0	27,45,45	1.43	4 (14%)
3	DUT	E	5194	2	22,29,29	0.93	1 (4%)	27,45,45	1.58	4 (14%)
3	DUT	B	2194	2	22,29,29	0.80	0	27,45,45	1.61	5 (18%)
3	DUT	D	4194	2	22,29,29	0.89	1 (4%)	27,45,45	1.49	5 (18%)
3	DUT	F	6194	2	22,29,29	0.90	1 (4%)	27,45,45	1.47	4 (14%)

In the following table, the Chirals column lists the number of chiral outliers, the number of chiral centers analysed, the number of these observed in the model and the number defined in the

Chemical Component Dictionary. Similar counts are reported in the Torsion and Rings columns.
'-' means no outliers of that kind were identified.

Mol	Type	Chain	Res	Link	Chirals	Torsions	Rings
3	DUT	A	1194	2	-	5/19/34/34	0/2/2/2
3	DUT	C	3194	2	-	4/19/34/34	0/2/2/2
3	DUT	E	5194	2	-	5/19/34/34	0/2/2/2
3	DUT	B	2194	2	-	4/19/34/34	0/2/2/2
3	DUT	D	4194	2	-	4/19/34/34	0/2/2/2
3	DUT	F	6194	2	-	5/19/34/34	0/2/2/2

All (4) bond length outliers are listed below:

Mol	Chain	Res	Type	Atoms	Z	Observed(Å)	Ideal(Å)
3	D	4194	DUT	C4-N3	2.87	1.38	1.33
3	F	6194	DUT	C4-N3	2.56	1.37	1.33
3	A	1194	DUT	C4-N3	2.42	1.37	1.33
3	E	5194	DUT	C4-N3	2.14	1.36	1.33

All (25) bond angle outliers are listed below:

Mol	Chain	Res	Type	Atoms	Z	Observed(°)	Ideal(°)
3	B	2194	DUT	C2'-C1'-N1	-4.72	103.38	114.27
3	E	5194	DUT	C2'-C1'-N1	-3.99	105.07	114.27
3	F	6194	DUT	C2'-C1'-N1	-3.91	105.25	114.27
3	C	3194	DUT	C2'-C1'-N1	-3.59	105.98	114.27
3	E	5194	DUT	O3G-PG-O2G	3.56	121.22	107.64
3	D	4194	DUT	C2'-C1'-N1	-3.43	106.35	114.27
3	A	1194	DUT	C2'-C1'-N1	-3.29	106.67	114.27
3	A	1194	DUT	O3'-C3'-C4'	2.66	120.28	110.10
3	C	3194	DUT	PB-O3A-PA	-2.61	123.87	132.83
3	D	4194	DUT	O2A-PA-O1A	2.60	125.09	112.24
3	C	3194	DUT	O4'-C1'-C2'	2.39	110.77	106.25
3	D	4194	DUT	O4'-C4'-C3'	2.32	111.08	105.67
3	B	2194	DUT	O4'-C4'-C5'	2.29	116.92	109.37
3	B	2194	DUT	O3'-C3'-C4'	2.28	118.83	110.10
3	B	2194	DUT	O3B-PG-O1G	-2.26	98.63	111.19
3	D	4194	DUT	O3G-PG-O2G	2.26	116.27	107.64
3	F	6194	DUT	O3G-PG-O2G	2.25	116.23	107.64
3	E	5194	DUT	O3'-C3'-C4'	2.22	118.61	110.10
3	C	3194	DUT	O3'-C3'-C4'	2.21	118.55	110.10
3	B	2194	DUT	O2G-PG-O1G	2.20	119.30	110.68
3	F	6194	DUT	PB-O3B-PG	-2.17	125.37	132.83

Continued on next page...

Continued from previous page...

Mol	Chain	Res	Type	Atoms	Z	Observed(°)	Ideal(°)
3	E	5194	DUT	O4'-C4'-C5'	2.15	116.46	109.37
3	A	1194	DUT	C3'-C2'-C1'	2.09	107.76	102.54
3	F	6194	DUT	PB-O3A-PA	-2.03	125.87	132.83
3	D	4194	DUT	PB-O3A-PA	-2.00	125.95	132.83

There are no chirality outliers.

All (27) torsion outliers are listed below:

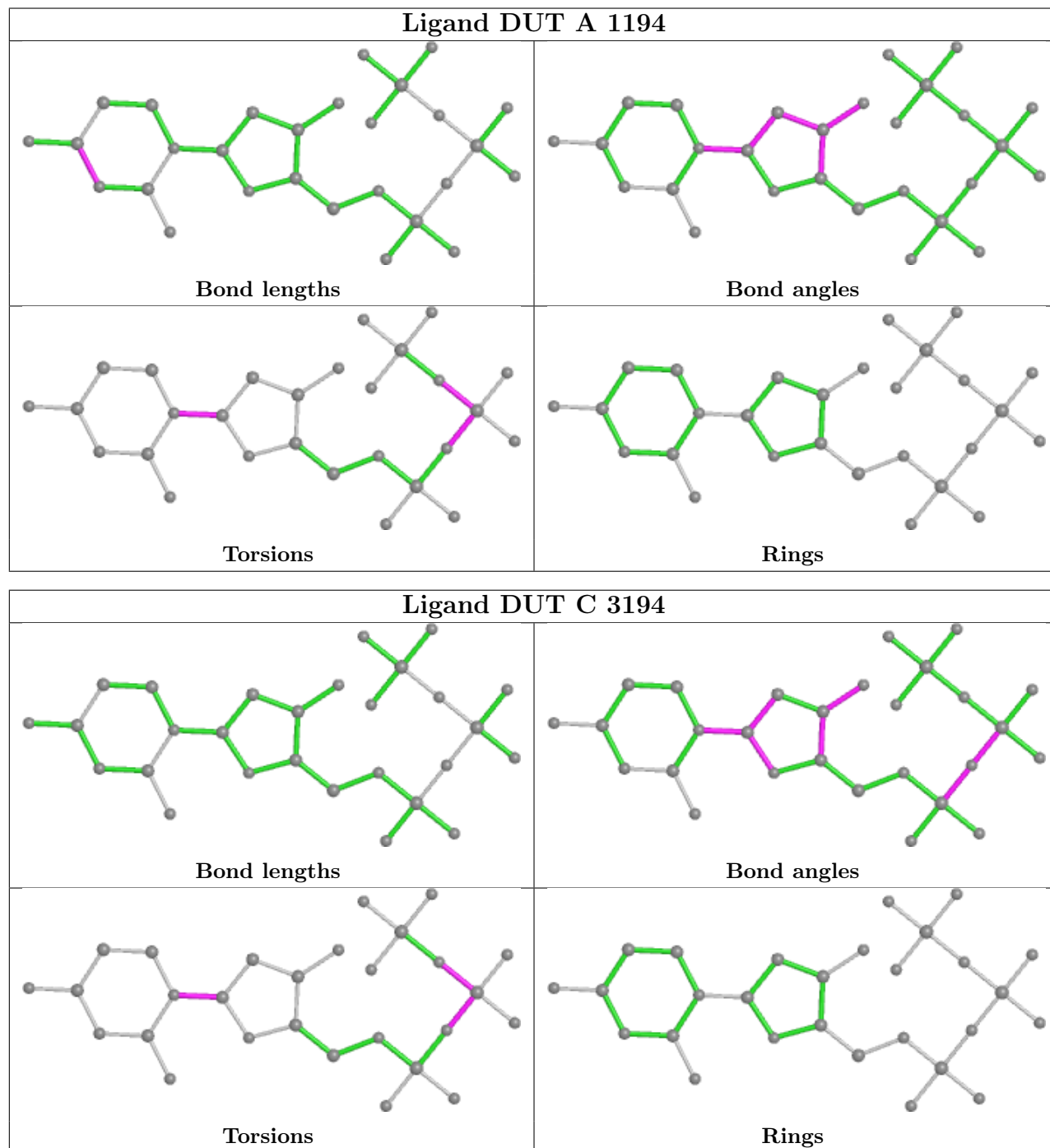
Mol	Chain	Res	Type	Atoms
3	A	1194	DUT	O4'-C1'-N1-C6
3	B	2194	DUT	O4'-C1'-N1-C6
3	C	3194	DUT	O4'-C1'-N1-C6
3	D	4194	DUT	O4'-C1'-N1-C6
3	E	5194	DUT	O4'-C1'-N1-C6
3	F	6194	DUT	O4'-C1'-N1-C6
3	E	5194	DUT	PG-O3B-PB-O1B
3	A	1194	DUT	PA-O3A-PB-O1B
3	A	1194	DUT	PG-O3B-PB-O2B
3	B	2194	DUT	PG-O3B-PB-O2B
3	D	4194	DUT	PG-O3B-PB-O2B
3	E	5194	DUT	PG-O3B-PB-O2B
3	F	6194	DUT	PA-O3A-PB-O1B
3	F	6194	DUT	PG-O3B-PB-O2B
3	A	1194	DUT	PA-O3A-PB-O2B
3	C	3194	DUT	PA-O3A-PB-O1B
3	C	3194	DUT	PG-O3B-PB-O1B
3	E	5194	DUT	PA-O3A-PB-O2B
3	A	1194	DUT	PG-O3B-PB-O1B
3	B	2194	DUT	PB-O3A-PA-O2A
3	B	2194	DUT	PG-O3B-PB-O1B
3	C	3194	DUT	PG-O3B-PB-O2B
3	D	4194	DUT	PA-O3A-PB-O2B
3	D	4194	DUT	PG-O3B-PB-O1B
3	E	5194	DUT	PA-O3A-PB-O1B
3	F	6194	DUT	PB-O3A-PA-O2A
3	F	6194	DUT	PG-O3B-PB-O1B

There are no ring outliers.

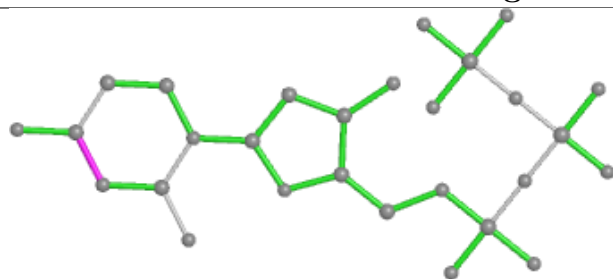
No monomer is involved in short contacts.

The following is a two-dimensional graphical depiction of Mogul quality analysis of bond lengths, bond angles, torsion angles, and ring geometry for all instances of the Ligand of Interest. In

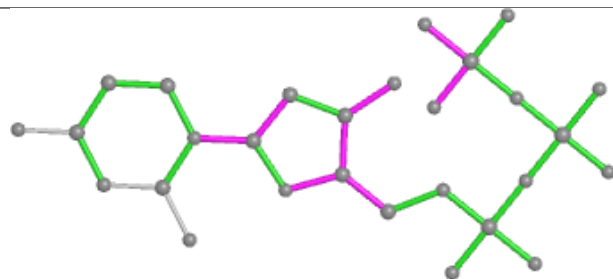
addition, ligands with molecular weight > 250 and outliers as shown on the validation Tables will also be included. For torsion angles, if less than 5% of the Mogul distribution of torsion angles is within 10 degrees of the torsion angle in question, then that torsion angle is considered an outlier. Any bond that is central to one or more torsion angles identified as an outlier by Mogul will be highlighted in the graph. For rings, the root-mean-square deviation (RMSD) between the ring in question and similar rings identified by Mogul is calculated over all ring torsion angles. If the average RMSD is greater than 60 degrees and the minimal RMSD between the ring in question and any Mogul-identified rings is also greater than 60 degrees, then that ring is considered an outlier. The outliers are highlighted in purple. The color gray indicates Mogul did not find sufficient equivalents in the CSD to analyse the geometry.



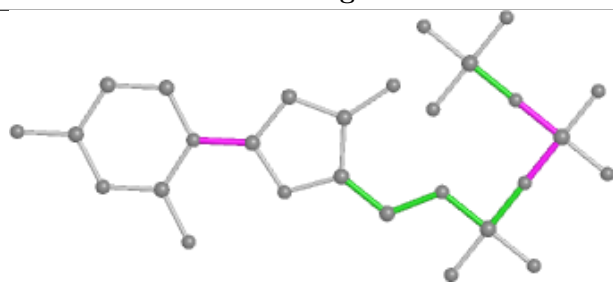
Ligand DUT E 5194



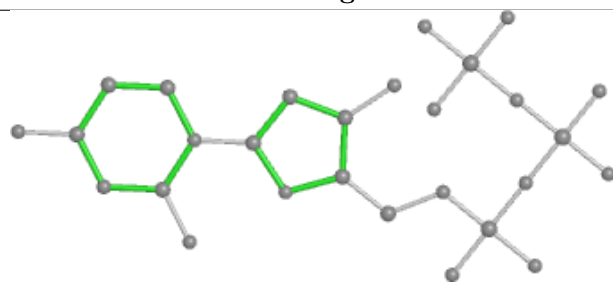
Bond lengths



Bond angles

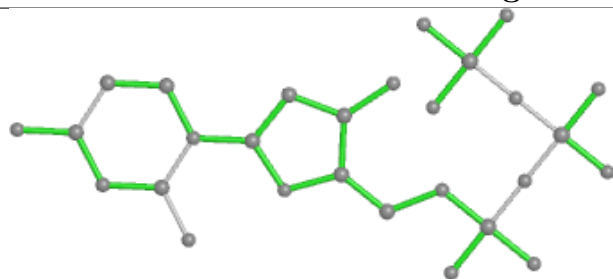


Torsions

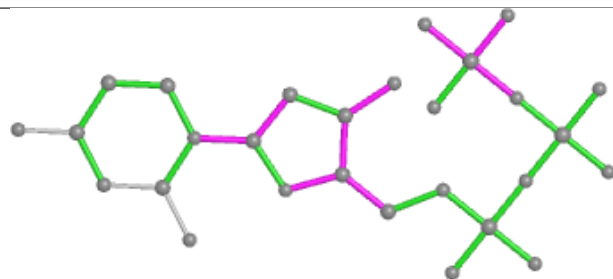


Rings

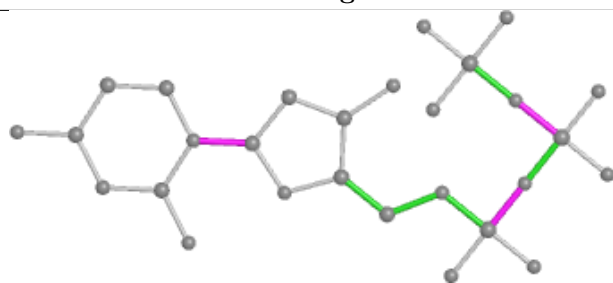
Ligand DUT B 2194



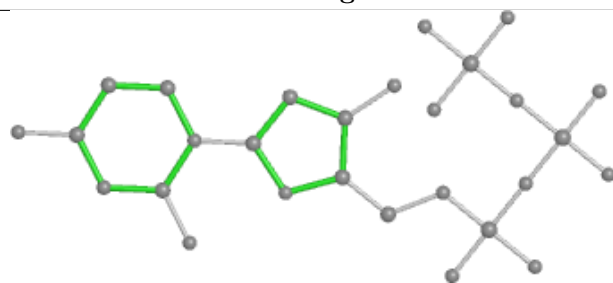
Bond lengths



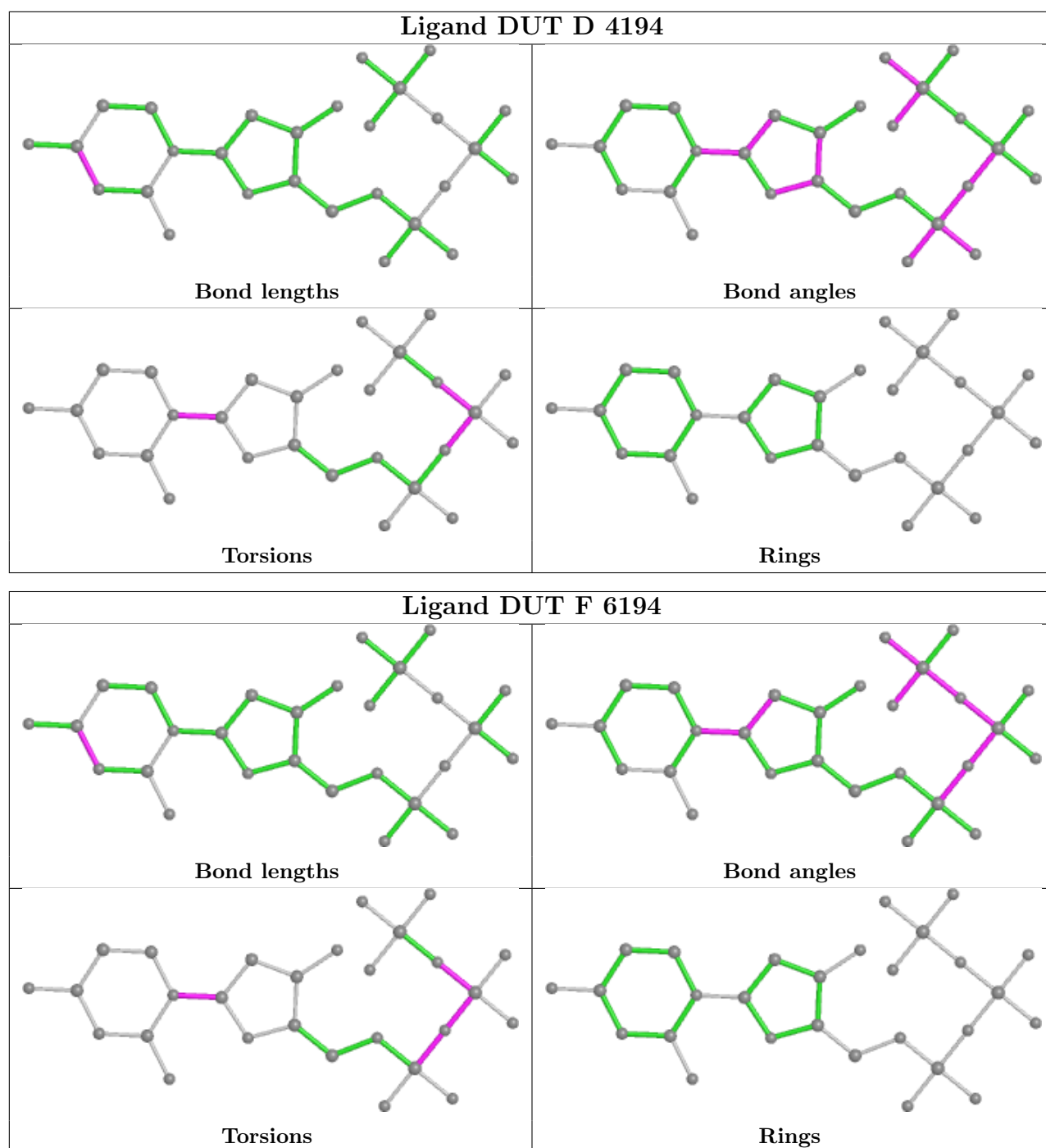
Bond angles



Torsions



Rings



5.7 Other polymers [i](#)

There are no such residues in this entry.

5.8 Polymer linkage issues [i](#)

There are no chain breaks in this entry.

6 Fit of model and data

6.1 Protein, DNA and RNA chains

In the following table, the column labelled ‘#RSRZ > 2’ contains the number (and percentage) of RSRZ outliers, followed by percent RSRZ outliers for the chain as percentile scores relative to all X-ray entries and entries of similar resolution. The OWAB column contains the minimum, median, 95th percentile and maximum values of the occupancy-weighted average B-factor per residue. The column labelled ‘Q < 0.9’ lists the number of (and percentage) of residues with an average occupancy less than 0.9.

Mol	Chain	Analysed	<RSRZ>	#RSRZ>2	OWAB(Å ²)	Q<0.9
1	A	193/193 (100%)	0.26	9 (4%) 31 30	12, 19, 29, 40	0
1	B	193/193 (100%)	0.22	11 (5%) 23 23	12, 19, 31, 39	0
1	C	193/193 (100%)	0.26	6 (3%) 49 48	11, 19, 28, 41	0
1	D	193/193 (100%)	0.25	9 (4%) 31 30	12, 19, 31, 38	0
1	E	193/193 (100%)	0.27	6 (3%) 49 48	12, 19, 28, 39	0
1	F	193/193 (100%)	0.21	6 (3%) 49 48	12, 19, 30, 37	0
All	All	1158/1158 (100%)	0.24	47 (4%) 37 36	11, 19, 30, 41	0

All (47) RSRZ outliers are listed below:

Mol	Chain	Res	Type	RSRZ
1	C	78	GLY	7.1
1	C	77	GLU	4.8
1	F	76	ASP	4.6
1	B	57	PRO	4.5
1	F	181	ASN	4.3
1	E	77	GLU	4.1
1	D	59	ASP	3.9
1	E	76	ASP	3.9
1	E	183	GLN	3.8
1	D	181	ASN	3.8
1	D	77	GLU	3.7
1	E	181	ASN	3.7
1	D	76	ASP	3.6
1	B	181	ASN	3.5
1	C	181	ASN	3.5
1	B	76	ASP	3.4
1	A	181	ASN	3.4
1	A	78	GLY	3.4
1	E	78	GLY	3.4

Continued on next page...

Continued from previous page...

Mol	Chain	Res	Type	RSRZ
1	C	183	GLN	3.2
1	A	76	ASP	3.2
1	D	57	PRO	3.2
1	A	75	LEU	3.1
1	B	59	ASP	3.1
1	B	183	GLN	3.1
1	F	77	GLU	3.0
1	A	183	GLN	3.0
1	B	78	GLY	2.9
1	F	183	GLN	2.9
1	D	78	GLY	2.8
1	A	77	GLU	2.8
1	B	175	GLU	2.7
1	D	183	GLN	2.7
1	B	77	GLU	2.6
1	C	76	ASP	2.5
1	F	78	GLY	2.5
1	B	1	MET	2.4
1	D	60	GLU	2.3
1	B	58	LYS	2.2
1	E	61	VAL	2.2
1	A	59	ASP	2.2
1	A	1	MET	2.2
1	A	56	GLY	2.2
1	D	66	ASP	2.2
1	F	1	MET	2.1
1	C	1	MET	2.1
1	B	14	GLU	2.0

6.2 Non-standard residues in protein, DNA, RNA chains [i](#)

There are no non-standard protein/DNA/RNA residues in this entry.

6.3 Carbohydrates [i](#)

There are no monosaccharides in this entry.

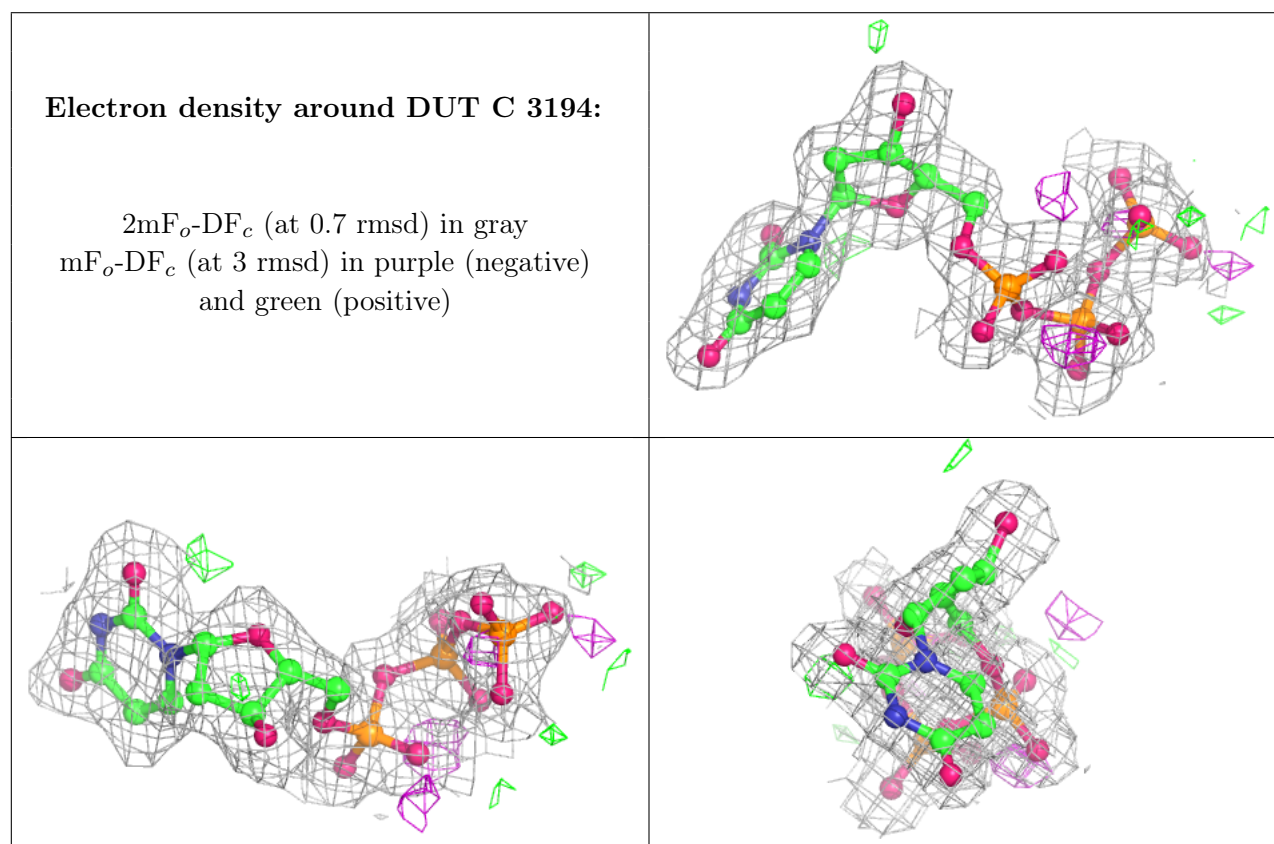
6.4 Ligands [i](#)

In the following table, the Atoms column lists the number of modelled atoms in the group and the number defined in the chemical component dictionary. The B-factors column lists the minimum,

median, 95th percentile and maximum values of B factors of atoms in the group. The column labelled 'Q< 0.9' lists the number of atoms with occupancy less than 0.9.

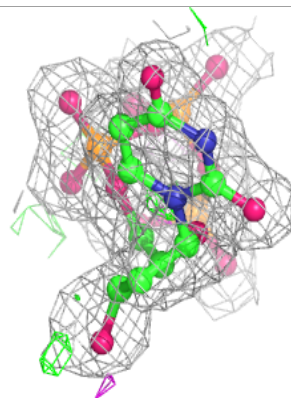
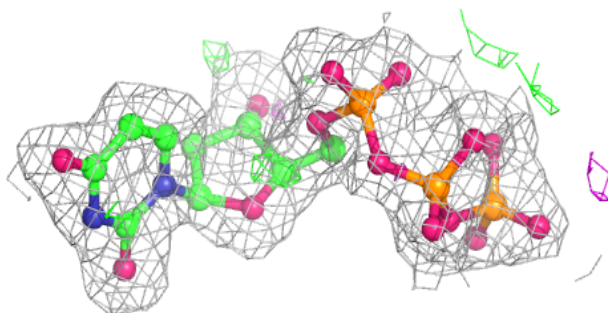
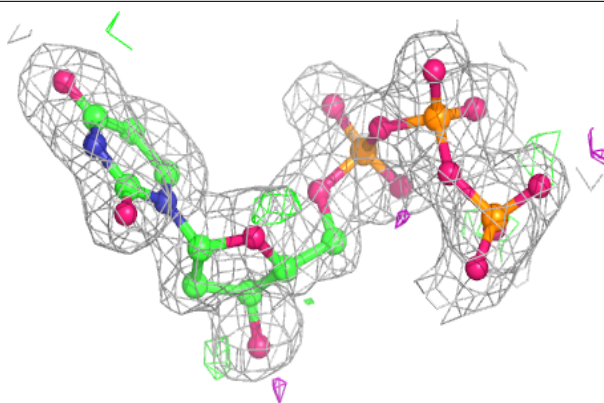
Mol	Type	Chain	Res	Atoms	RSCC	RSR	B-factors(Å ²)	Q<0.9
2	MG	D	5195	1/1	0.85	0.10	23,23,23,23	0
2	MG	A	2195	1/1	0.90	0.13	21,21,21,21	0
3	DUT	C	3194	28/28	0.94	0.12	6,14,15,16	0
3	DUT	B	2194	28/28	0.95	0.10	11,15,16,17	0
2	MG	B	3195	1/1	0.95	0.11	7,7,7,7	0
2	MG	D	5196	1/1	0.96	0.04	18,18,18,18	0
3	DUT	D	4194	28/28	0.96	0.10	13,15,17,17	0
3	DUT	A	1194	28/28	0.97	0.09	12,14,16,18	0
2	MG	C	1195	1/1	0.97	0.10	15,15,15,15	0
3	DUT	E	5194	28/28	0.97	0.10	12,14,16,16	0
3	DUT	F	6194	28/28	0.97	0.10	10,14,16,16	0
2	MG	E	6195	1/1	0.98	0.07	18,18,18,18	0
2	MG	F	4195	1/1	0.98	0.06	15,15,15,15	0

The following is a graphical depiction of the model fit to experimental electron density of all instances of the Ligand of Interest. In addition, ligands with molecular weight > 250 and outliers as shown on the geometry validation Tables will also be included. Each fit is shown from different orientation to approximate a three-dimensional view.

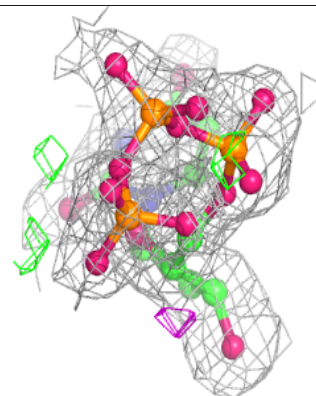
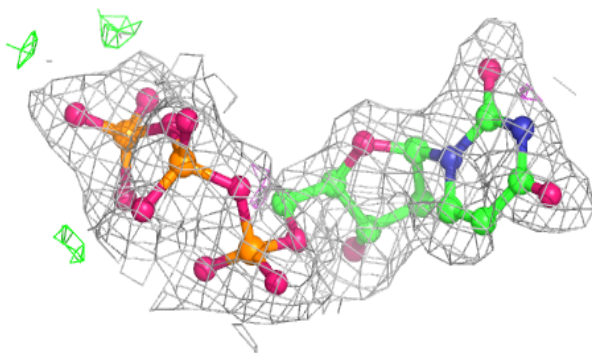
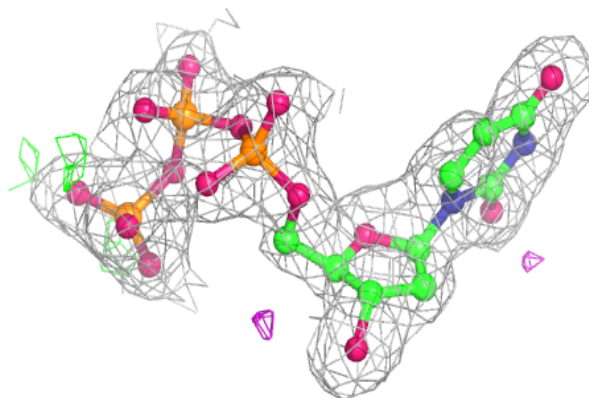


Electron density around DUT B 2194:

$2mF_o-DF_c$ (at 0.7 rmsd) in gray
 mF_o-DF_c (at 3 rmsd) in purple (negative)
and green (positive)

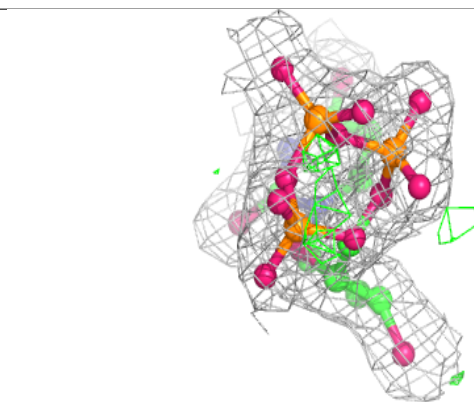
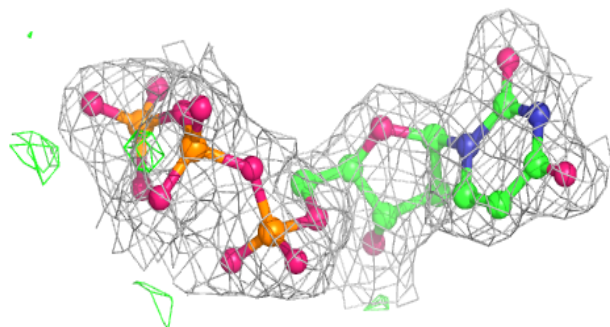
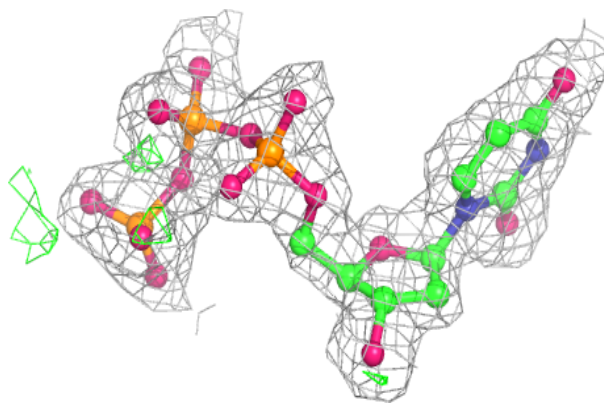
**Electron density around DUT D 4194:**

$2mF_o-DF_c$ (at 0.7 rmsd) in gray
 mF_o-DF_c (at 3 rmsd) in purple (negative)
and green (positive)

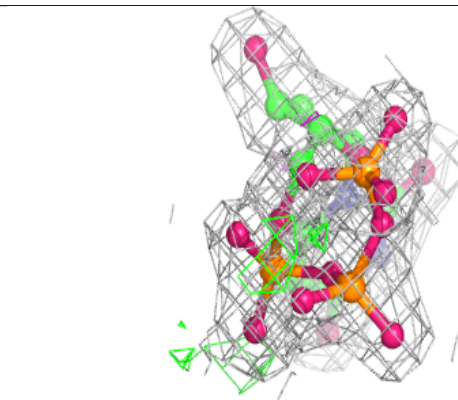
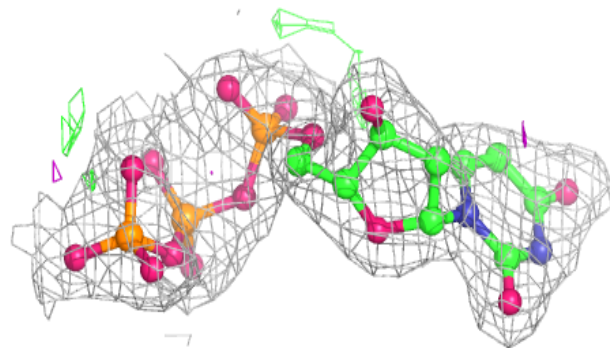
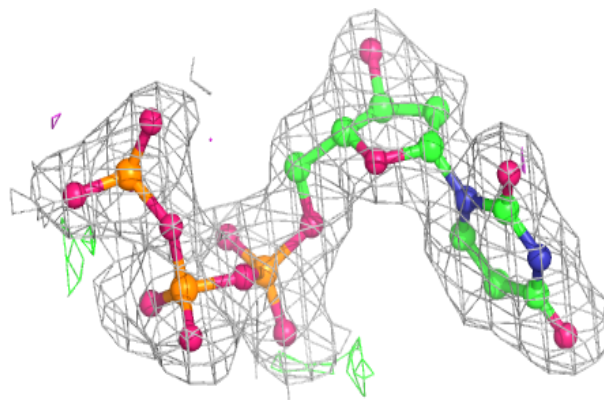


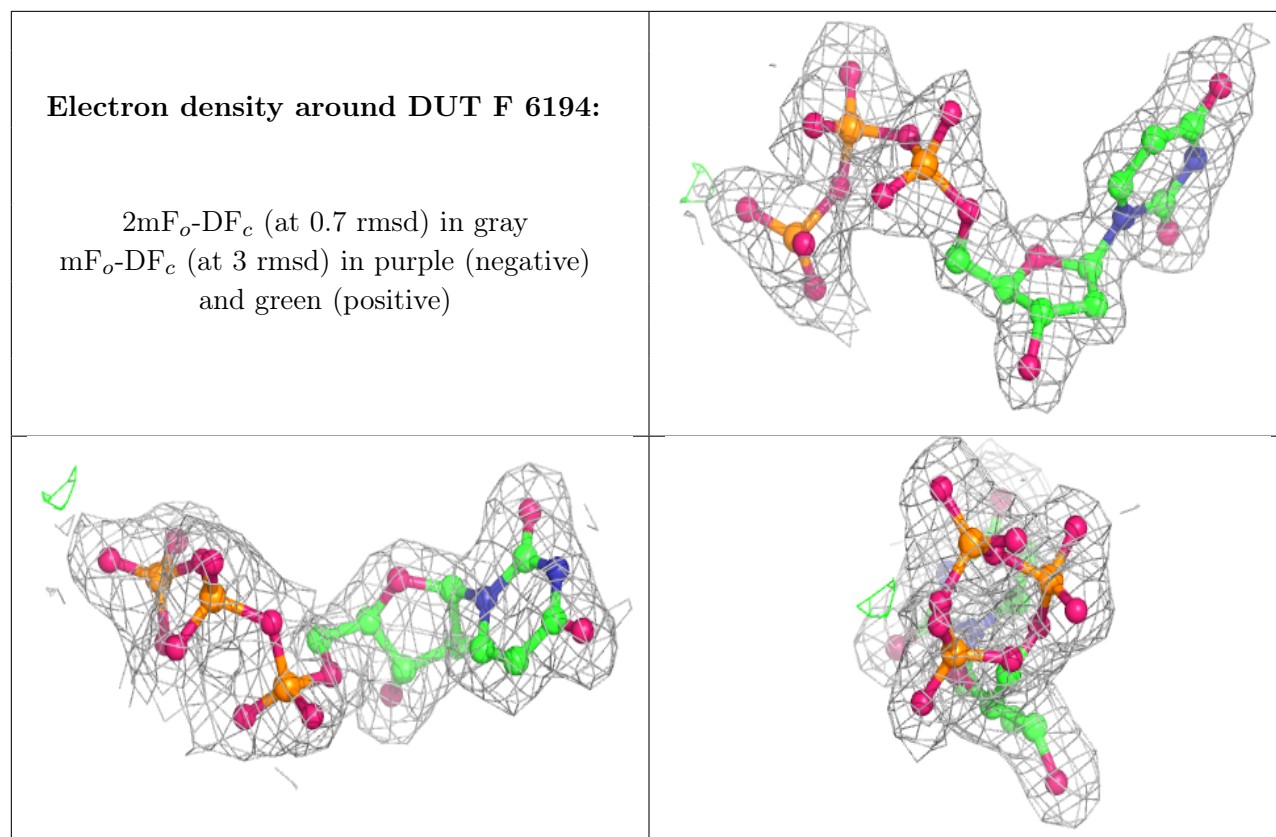
Electron density around DUT A 1194:

$2mF_o-DF_c$ (at 0.7 rmsd) in gray
 mF_o-DF_c (at 3 rmsd) in purple (negative)
and green (positive)

**Electron density around DUT E 5194:**

$2mF_o-DF_c$ (at 0.7 rmsd) in gray
 mF_o-DF_c (at 3 rmsd) in purple (negative)
and green (positive)





6.5 Other polymers [i](#)

There are no such residues in this entry.