



# Full wwPDB X-ray Structure Validation Report ⓘ

Aug 17, 2020 – 09:23 AM BST

PDB ID : 4XSS  
Title : Insulin-like growth factor I in complex with site 1 of a hybrid insulin receptor  
/ Type 1 insulin-like growth factor receptor  
Authors : Lawrence, C.; Kong, G.K.-W.; Menting, J.G.; Lawrence, M.C.  
Deposited on : 2015-01-22  
Resolution : 3.00 Å(reported)

This is a Full wwPDB X-ray Structure Validation Report for a publicly released PDB entry.

We welcome your comments at [validation@mail.wwpdb.org](mailto:validation@mail.wwpdb.org)

A user guide is available at

<https://www.wwpdb.org/validation/2017/XrayValidationReportHelp>

with specific help available everywhere you see the ⓘ symbol.

---

The following versions of software and data (see [references ⓘ](#)) were used in the production of this report:

MolProbity : 4.02b-467  
Mogul : 1.8.5 (274361), CSD as541be (2020)  
Xtriage (Phenix) : 1.13  
EDS : 2.13.1  
Percentile statistics : 20191225.v01 (using entries in the PDB archive December 25th 2019)  
Refmac : 5.8.0158  
CCP4 : 7.0.044 (Gargrove)  
Ideal geometry (proteins) : Engh & Huber (2001)  
Ideal geometry (DNA, RNA) : Parkinson et al. (1996)  
Validation Pipeline (wwPDB-VP) : 2.13.1

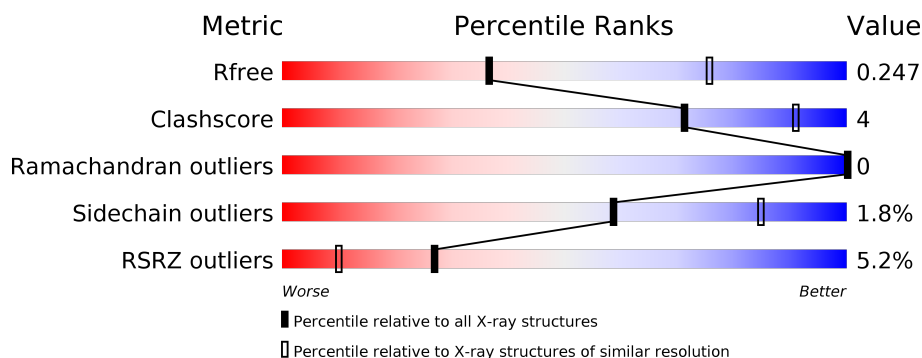
# 1 Overall quality at a glance

The following experimental techniques were used to determine the structure:

*X-RAY DIFFRACTION*

The reported resolution of this entry is 3.00 Å.

Percentile scores (ranging between 0-100) for global validation metrics of the entry are shown in the following graphic. The table shows the number of entries on which the scores are based.



Metric	Whole archive (#Entries)	Similar resolution (#Entries, resolution range(Å))
$R_{free}$	130704	2092 (3.00-3.00)
Clashscore	141614	2416 (3.00-3.00)
Ramachandran outliers	138981	2333 (3.00-3.00)
Sidechain outliers	138945	2336 (3.00-3.00)
RSRZ outliers	127900	1990 (3.00-3.00)

The table below summarises the geometric issues observed across the polymeric chains and their fit to the electron density. The red, orange, yellow and green segments on the lower bar indicate the fraction of residues that contain outliers for  $\geq 3$ , 2, 1 and 0 types of geometric quality criteria respectively. A grey segment represents the fraction of residues that are not modelled. The numeric value for each fraction is indicated below the corresponding segment, with a dot representing fractions  $\leq 5\%$ . The upper red bar (where present) indicates the fraction of residues that have poor fit to the electron density. The numeric value is given above the bar.

Mol	Chain	Length	Quality of chain
1	B	70	<div> <div></div> <div>60% 7% 33%</div> </div>
2	E	317	<div> <div>6%</div> <div>90% 8%</div> </div>
3	F	16	<div> <div>6%</div> <div>56% 13% 6% 25%</div> </div>
4	A	4	<div> <div></div> <div>75% 25%</div> </div>
5	C	3	<div> <div></div> <div>67% 33%</div> </div>

The following table lists non-polymeric compounds, carbohydrate monomers and non-standard residues in protein, DNA, RNA chains that are outliers for geometric or electron-density-fit criteria:

Mol	Type	Chain	Res	Chirality	Geometry	Clashes	Electron density
4	FUC	A	4	-	-	-	X
7	NAG	E	412	-	-	-	X

## 2 Entry composition

There are 7 unique types of molecules in this entry. The entry contains 3081 atoms, of which 0 are hydrogens and 0 are deuteriums.

In the tables below, the ZeroOcc column contains the number of atoms modelled with zero occupancy, the AltConf column contains the number of residues with at least one atom in alternate conformation and the Trace column contains the number of residues modelled with at most 2 atoms.

- Molecule 1 is a protein called Insulin-like growth factor I.

Mol	Chain	Residues	Atoms					ZeroOcc	AltConf	Trace
1	B	47	Total	C	N	O	S	0	0	0
			368	230	61	70	7			

- Molecule 2 is a protein called Insulin receptor.

Mol	Chain	Residues	Atoms					ZeroOcc	AltConf	Trace
2	E	309	Total	C	N	O	S	0	0	0
			2461	1545	432	450	34			

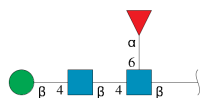
There are 8 discrepancies between the modelled and reference sequences:

Chain	Residue	Modelled	Actual	Comment	Reference
E	144	HIS	TYR	conflict	UNP P06213
E	311	SER	-	expression tag	UNP P06213
E	312	SER	-	expression tag	UNP P06213
E	313	SER	-	expression tag	UNP P06213
E	314	LEU	-	expression tag	UNP P06213
E	315	VAL	-	expression tag	UNP P06213
E	316	PRO	-	expression tag	UNP P06213
E	317	ARG	-	expression tag	UNP P06213

- Molecule 3 is a protein called Insulin-like growth factor receptor alpha-CT peptide.

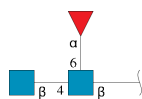
Mol	Chain	Residues	Atoms				ZeroOcc	AltConf	Trace
3	F	12	Total	C	N	O	0	0	0
			104	68	19	17			

- Molecule 4 is an oligosaccharide called beta-D-mannopyranose-(1-4)-2-acetamido-2-deoxy-beta-D-glucopyranose-(1-4)-[alpha-L-fucopyranose-(1-6)]2-acetamido-2-deoxy-beta-D-glucopyranose.



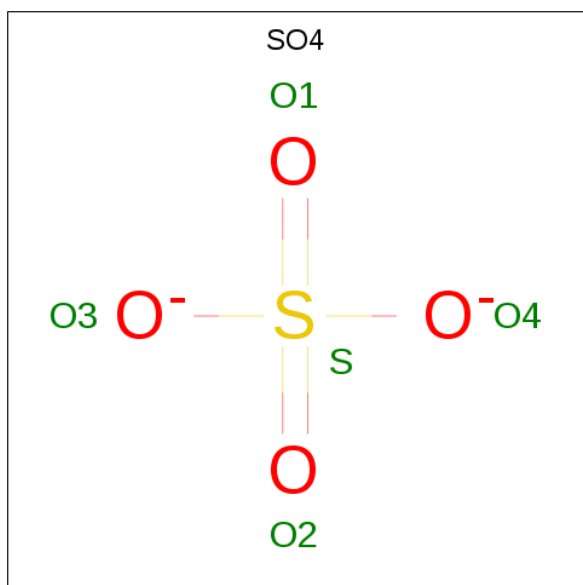
Mol	Chain	Residues	Atoms				ZeroOcc	AltConf	Trace
4	A	4	Total	C	N	O	0	0	0
			49	28	2	19			

- Molecule 5 is an oligosaccharide called 2-acetamido-2-deoxy-beta-D-glucopyranose-(1-4)-[alpha-L-fucopyranose-(1-6)]2-acetamido-2-deoxy-beta-D-glucopyranose.



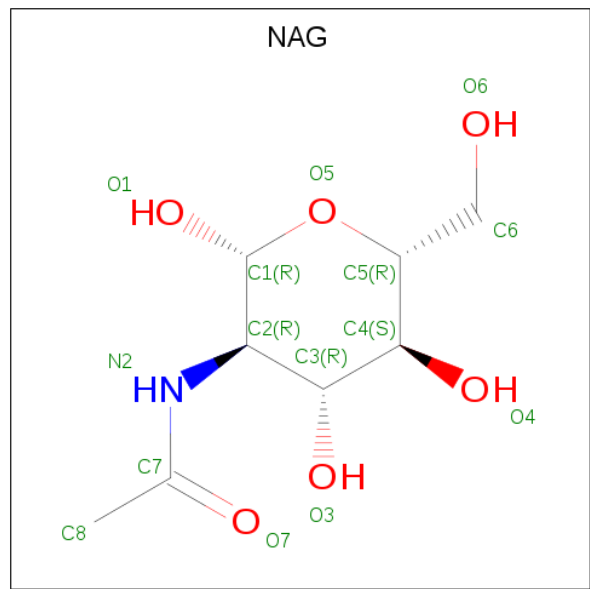
Mol	Chain	Residues	Atoms				ZeroOcc	AltConf	Trace
5	C	3	Total	C	N	O	0	0	0
			38	22	2	14			

- Molecule 6 is SULFATE ION (three-letter code: SO4) (formula: O<sub>4</sub>S).



Mol	Chain	Residues	Atoms			ZeroOcc	AltConf
6	E	1	Total	O	S	0	0
			5	4	1		

- Molecule 7 is 2-acetamido-2-deoxy-beta-D-glucopyranose (three-letter code: NAG) (formula:  $\text{C}_8\text{H}_{15}\text{NO}_6$ ).



Mol	Chain	Residues	Atoms				ZeroOcc	AltConf
7	E	1	Total	C	N	O	0	0
			14	8	1	5		
7	E	1	Total	C	N	O	0	0
			14	8	1	5		
7	E	1	Total	C	N	O	0	0
			14	8	1	5		
7	E	1	Total	C	N	O	0	0
			14	8	1	5		







## 4 Data and refinement statistics

Property	Value	Source
Space group	H 3 2	Depositor
Cell constants a, b, c, $\alpha$ , $\beta$ , $\gamma$	219.16Å 219.16Å 121.22Å 90.00° 90.00° 120.00°	Depositor
Resolution (Å)	48.28 – 3.00 46.30 – 3.00	Depositor EDS
% Data completeness (in resolution range)	99.8 (48.28-3.00) 99.8 (46.30-3.00)	Depositor EDS
$R_{merge}$	0.13	Depositor
$R_{sym}$	(Not available)	Depositor
$\langle I/\sigma(I) \rangle$ <sup>1</sup>	1.21 (at 3.01Å)	Xtriage
Refinement program	BUSTER 2.10.2	Depositor
R, $R_{free}$	0.209 , 0.229 0.235 , 0.247	Depositor DCC
$R_{free}$ test set	1147 reflections (5.13%)	wwPDB-VP
Wilson B-factor (Å <sup>2</sup> )	87.5	Xtriage
Anisotropy	0.618	Xtriage
Bulk solvent $k_{sol}$ (e/Å <sup>3</sup> ), $B_{sol}$ (Å <sup>2</sup> )	0.33 , 88.1	EDS
L-test for twinning <sup>2</sup>	$\langle  L  \rangle = 0.46$ , $\langle L^2 \rangle = 0.29$	Xtriage
Estimated twinning fraction	No twinning to report.	Xtriage
$F_o, F_c$ correlation	0.94	EDS
Total number of atoms	3081	wwPDB-VP
Average B, all atoms (Å <sup>2</sup> )	129.0	wwPDB-VP

Xtriage's analysis on translational NCS is as follows: *The largest off-origin peak in the Patterson function is 3.38% of the height of the origin peak. No significant pseudotranslation is detected.*

<sup>1</sup>Intensities estimated from amplitudes.

<sup>2</sup>Theoretical values of  $\langle |L| \rangle$ ,  $\langle L^2 \rangle$  for acentric reflections are 0.5, 0.333 respectively for untwinned datasets, and 0.375, 0.2 for perfectly twinned datasets.

## 5 Model quality [i](#)

### 5.1 Standard geometry [i](#)

Bond lengths and bond angles in the following residue types are not validated in this section: FUC, BMA, SO4, NAG

The Z score for a bond length (or angle) is the number of standard deviations the observed value is removed from the expected value. A bond length (or angle) with  $|Z| > 5$  is considered an outlier worth inspection. RMSZ is the root-mean-square of all Z scores of the bond lengths (or angles).

Mol	Chain	Bond lengths		Bond angles	
		RMSZ	# Z  >5	RMSZ	# Z  >5
1	B	0.48	0/373	0.67	0/500
2	E	0.54	0/2522	0.76	0/3420
3	F	0.65	0/107	0.80	0/144
All	All	0.54	0/3002	0.75	0/4064

There are no bond length outliers.

There are no bond angle outliers.

There are no chirality outliers.

There are no planarity outliers.

### 5.2 Too-close contacts [i](#)

In the following table, the Non-H and H(model) columns list the number of non-hydrogen atoms and hydrogen atoms in the chain respectively. The H(added) column lists the number of hydrogen atoms added and optimized by MolProbity. The Clashes column lists the number of clashes within the asymmetric unit, whereas Symm-Clashes lists symmetry related clashes.

Mol	Chain	Non-H	H(model)	H(added)	Clashes	Symm-Clashes
1	B	368	0	337	7	0
2	E	2461	0	2360	17	0
3	F	104	0	98	2	0
4	A	49	0	43	0	0
5	C	38	0	34	0	0
6	E	5	0	0	0	0
7	E	56	0	52	0	0
All	All	3081	0	2924	21	0

The all-atom clashscore is defined as the number of clashes found per 1000 atoms (including hydrogen atoms). The all-atom clashscore for this structure is 4.

All (21) close contacts within the same asymmetric unit are listed below, sorted by their clash magnitude.

Atom-1	Atom-2	Interatomic distance (Å)	Clash overlap (Å)
1:B:14:LEU:HB3	1:B:23:PHE:HE1	1.46	0.79
1:B:14:LEU:HB3	1:B:23:PHE:CE1	2.30	0.67
1:B:23:PHE:HE2	2:E:39:PHE:HE2	1.50	0.59
2:E:263:HIS:CE1	2:E:276:GLN:HB3	2.39	0.57
1:B:46:GLU:HB3	1:B:56:ARG:HD2	1.87	0.57
2:E:56:MET:HG3	2:E:81:VAL:HB	1.87	0.57
2:E:169:CYS:HB2	2:E:180:GLU:HG3	1.87	0.56
1:B:23:PHE:CE2	2:E:39:PHE:HE2	2.26	0.54
1:B:23:PHE:HE2	2:E:39:PHE:CE2	2.26	0.53
2:E:278:VAL:HG12	2:E:294:MET:HG3	1.93	0.51
2:E:89:PHE:O	2:E:90:ASN:HB2	2.11	0.50
2:E:12:ASP:OD1	2:E:14:ARG:HD2	2.10	0.50
2:E:107:TYR:HA	2:E:183:TRP:CD1	2.51	0.45
2:E:278:VAL:CG1	2:E:294:MET:HG3	2.47	0.45
2:E:169:CYS:HB2	2:E:180:GLU:CG	2.48	0.43
2:E:89:PHE:HB2	3:F:695:PHE:CE1	2.54	0.43
1:B:15:GLN:OE1	2:E:39:PHE:CD2	2.71	0.43
2:E:19:ARG:O	2:E:22:GLU:HB2	2.19	0.42
2:E:158:ILE:HG13	2:E:162:THR:OG1	2.19	0.41
2:E:294:MET:SD	2:E:299:LEU:HA	2.61	0.41
3:F:703:PRO:O	3:F:704:ARG:HB2	2.22	0.40

There are no symmetry-related clashes.

## 5.3 Torsion angles [i](#)

### 5.3.1 Protein backbone [i](#)

In the following table, the Percentiles column shows the percent Ramachandran outliers of the chain as a percentile score with respect to all X-ray entries followed by that with respect to entries of similar resolution.

The Analysed column shows the number of residues for which the backbone conformation was analysed, and the total number of residues.

Mol	Chain	Analysed	Favoured	Allowed	Outliers	Percentiles	
1	B	43/70 (61%)	42 (98%)	1 (2%)	0	100	100
2	E	307/317 (97%)	289 (94%)	18 (6%)	0	100	100

*Continued on next page...*

*Continued from previous page...*

Mol	Chain	Analysed	Favoured	Allowed	Outliers	Percentiles	
3	F	10/16 (62%)	9 (90%)	1 (10%)	0	100	100
All	All	360/403 (89%)	340 (94%)	20 (6%)	0	100	100

There are no Ramachandran outliers to report.

### 5.3.2 Protein sidechains ⓘ

In the following table, the Percentiles column shows the percent sidechain outliers of the chain as a percentile score with respect to all X-ray entries followed by that with respect to entries of similar resolution.

The Analysed column shows the number of residues for which the sidechain conformation was analysed, and the total number of residues.

Mol	Chain	Analysed	Rotameric	Outliers	Percentiles	
1	B	40/57 (70%)	40 (100%)	0	100	100
2	E	285/293 (97%)	280 (98%)	5 (2%)	59	85
3	F	12/16 (75%)	11 (92%)	1 (8%)	11	39
All	All	337/366 (92%)	331 (98%)	6 (2%)	59	85

All (6) residues with a non-rotameric sidechain are listed below:

Mol	Chain	Res	Type
2	E	2	LEU
2	E	27	SER
2	E	269	SER
2	E	274	CYS
2	E	290	SER
3	F	704	ARG

Some sidechains can be flipped to improve hydrogen bonding and reduce clashes. All (2) such sidechains are listed below:

Mol	Chain	Res	Type
2	E	152	ASN
2	E	263	HIS

### 5.3.3 RNA ⓘ

There are no RNA molecules in this entry.

## 5.4 Non-standard residues in protein, DNA, RNA chains ⓘ

There are no non-standard protein/DNA/RNA residues in this entry.

## 5.5 Carbohydrates ⓘ

7 monosaccharides are modelled in this entry.

In the following table, the Counts columns list the number of bonds (or angles) for which Mogul statistics could be retrieved, the number of bonds (or angles) that are observed in the model and the number of bonds (or angles) that are defined in the Chemical Component Dictionary. The Link column lists molecule types, if any, to which the group is linked. The Z score for a bond length (or angle) is the number of standard deviations the observed value is removed from the expected value. A bond length (or angle) with  $|Z| > 2$  is considered an outlier worth inspection. RMSZ is the root-mean-square of all Z scores of the bond lengths (or angles).

Mol	Type	Chain	Res	Link	Bond lengths			Bond angles		
					Counts	RMSZ	$\# Z  > 2$	Counts	RMSZ	$\# Z  > 2$
4	NAG	A	1	2,4	14,14,15	0.34	0	17,19,21	0.57	0
4	NAG	A	2	4	14,14,15	0.33	0	17,19,21	0.62	0
4	BMA	A	3	4	11,11,12	0.35	0	15,15,17	0.47	0
4	FUC	A	4	4	10,10,11	0.46	0	14,14,16	0.84	1 (7%)
5	NAG	C	1	2,5	14,14,15	0.32	0	17,19,21	0.65	0
5	NAG	C	2	5	14,14,15	0.33	0	17,19,21	0.93	1 (5%)
5	FUC	C	3	5	10,10,11	0.50	0	14,14,16	0.80	0

In the following table, the Chirals column lists the number of chiral outliers, the number of chiral centers analysed, the number of these observed in the model and the number defined in the Chemical Component Dictionary. Similar counts are reported in the Torsion and Rings columns. '-' means no outliers of that kind were identified.

Mol	Type	Chain	Res	Link	Chirals	Torsions	Rings
4	NAG	A	1	2,4	-	0/6/23/26	0/1/1/1
4	NAG	A	2	4	-	0/6/23/26	0/1/1/1
4	BMA	A	3	4	-	0/2/19/22	0/1/1/1
4	FUC	A	4	4	-	-	0/1/1/1
5	NAG	C	1	2,5	-	2/6/23/26	0/1/1/1
5	NAG	C	2	5	-	0/6/23/26	0/1/1/1
5	FUC	C	3	5	-	-	0/1/1/1

There are no bond length outliers.

All (2) bond angle outliers are listed below:

Mol	Chain	Res	Type	Atoms	Z	Observed(°)	Ideal(°)
5	C	2	NAG	C1-C2-N2	2.79	115.26	110.49
4	A	4	FUC	C1-C2-C3	2.32	112.52	109.67

There are no chirality outliers.

All (2) torsion outliers are listed below:

Mol	Chain	Res	Type	Atoms
5	C	1	NAG	C4-C5-C6-O6
5	C	1	NAG	O5-C5-C6-O6

There are no ring outliers.

No monomer is involved in short contacts.

## 5.6 Ligand geometry

5 ligands are modelled in this entry.

In the following table, the Counts columns list the number of bonds (or angles) for which Mogul statistics could be retrieved, the number of bonds (or angles) that are observed in the model and the number of bonds (or angles) that are defined in the Chemical Component Dictionary. The Link column lists molecule types, if any, to which the group is linked. The Z score for a bond length (or angle) is the number of standard deviations the observed value is removed from the expected value. A bond length (or angle) with  $|Z| > 2$  is considered an outlier worth inspection. RMSZ is the root-mean-square of all Z scores of the bond lengths (or angles).

Mol	Type	Chain	Res	Link	Bond lengths			Bond angles		
					Counts	RMSZ	# Z  > 2	Counts	RMSZ	# Z  > 2
7	NAG	E	408	2	14,14,15	0.29	0	17,19,21	0.86	1 (5%)
7	NAG	E	407	2	14,14,15	0.31	0	17,19,21	1.60	3 (17%)
7	NAG	E	402	2	14,14,15	0.33	0	17,19,21	0.95	1 (5%)
6	SO4	E	401	-	4,4,4	0.30	0	6,6,6	0.43	0
7	NAG	E	412	2	14,14,15	0.39	0	17,19,21	0.97	1 (5%)

In the following table, the Chirals column lists the number of chiral outliers, the number of chiral centers analysed, the number of these observed in the model and the number defined in the Chemical Component Dictionary. Similar counts are reported in the Torsion and Rings columns. '-' means no outliers of that kind were identified.

Mol	Type	Chain	Res	Link	Chirals	Torsions	Rings
7	NAG	E	408	2	-	4/6/23/26	0/1/1/1
7	NAG	E	407	2	-	2/6/23/26	0/1/1/1

*Continued on next page...*

*Continued from previous page...*

Mol	Type	Chain	Res	Link	Chirals	Torsions	Rings
7	NAG	E	402	2	-	0/6/23/26	0/1/1/1
7	NAG	E	412	2	-	3/6/23/26	0/1/1/1

There are no bond length outliers.

All (6) bond angle outliers are listed below:

Mol	Chain	Res	Type	Atoms	Z	Observed(°)	Ideal(°)
7	E	407	NAG	C1-O5-C5	4.89	118.82	112.19
7	E	402	NAG	O5-C1-C2	-3.08	106.42	111.29
7	E	407	NAG	C1-C2-N2	2.91	115.46	110.49
7	E	412	NAG	C1-O5-C5	2.73	115.90	112.19
7	E	407	NAG	O5-C1-C2	-2.28	107.69	111.29
7	E	408	NAG	O5-C1-C2	2.26	114.85	111.29

There are no chirality outliers.

All (9) torsion outliers are listed below:

Mol	Chain	Res	Type	Atoms
7	E	408	NAG	C8-C7-N2-C2
7	E	408	NAG	O7-C7-N2-C2
7	E	407	NAG	O5-C5-C6-O6
7	E	407	NAG	C4-C5-C6-O6
7	E	412	NAG	C4-C5-C6-O6
7	E	412	NAG	O5-C5-C6-O6
7	E	412	NAG	C1-C2-N2-C7
7	E	408	NAG	O5-C5-C6-O6
7	E	408	NAG	C1-C2-N2-C7

There are no ring outliers.

No monomer is involved in short contacts.

## 5.7 Other polymers ⓘ

There are no such residues in this entry.

## 5.8 Polymer linkage issues ⓘ

There are no chain breaks in this entry.

## 6 Fit of model and data

### 6.1 Protein, DNA and RNA chains

In the following table, the column labelled ‘#RSRZ> 2’ contains the number (and percentage) of RSRZ outliers, followed by percent RSRZ outliers for the chain as percentile scores relative to all X-ray entries and entries of similar resolution. The OWAB column contains the minimum, median, 95<sup>th</sup> percentile and maximum values of the occupancy-weighted average B-factor per residue. The column labelled ‘Q< 0.9’ lists the number of (and percentage) of residues with an average occupancy less than 0.9.

Mol	Chain	Analysed	<RSRZ>	#RSRZ>2	OWAB(Å <sup>2</sup> )	Q<0.9
1	B	47/70 (67%)	0.20	0 <span>100</span> <span>100</span>	132, 159, 187, 199	0
2	E	309/317 (97%)	0.24	18 (5%) <span>23</span> <span>7</span>	80, 115, 180, 220	0
3	F	12/16 (75%)	0.17	1 (8%) <span>11</span> <span>3</span>	116, 133, 152, 197	0
All	All	368/403 (91%)	0.24	19 (5%) <span>27</span> <span>10</span>	80, 121, 182, 220	0

All (19) RSRZ outliers are listed below:

Mol	Chain	Res	Type	RSRZ
2	E	268	ASN	8.3
2	E	271	ARG	5.6
2	E	269	SER	5.5
2	E	272	GLN	5.4
2	E	275	HIS	3.7
2	E	163	ALA	3.7
2	E	264	HIS	3.7
2	E	273	GLY	3.6
2	E	305	LEU	3.1
2	E	270	ARG	2.8
2	E	274	CYS	2.7
2	E	165	GLY	2.3
2	E	152	ASN	2.3
2	E	153	GLU	2.2
2	E	266	CYS	2.2
2	E	267	LYS	2.2
2	E	295	ASN	2.0
2	E	164	LYS	2.0
3	F	704	ARG	2.0



## 6.2 Non-standard residues in protein, DNA, RNA chains [i](#)

There are no non-standard protein/DNA/RNA residues in this entry.

## 6.3 Carbohydrates [i](#)

In the following table, the Atoms column lists the number of modelled atoms in the group and the number defined in the chemical component dictionary. The B-factors column lists the minimum, median, 95<sup>th</sup> percentile and maximum values of B factors of atoms in the group. The column labelled 'Q< 0.9' lists the number of atoms with occupancy less than 0.9.

Mol	Type	Chain	Res	Atoms	RSCC	RSR	B-factors(Å <sup>2</sup> )	Q<0.9
4	FUC	A	4	10/11	0.62	0.56	212,213,217,218	0
4	BMA	A	3	11/12	0.68	0.40	230,233,237,240	0
5	FUC	C	3	10/11	0.81	0.38	166,171,175,178	0
4	NAG	A	2	14/15	0.81	0.36	216,220,227,229	0
5	NAG	C	1	14/15	0.84	0.15	151,159,165,166	0
4	NAG	A	1	14/15	0.89	0.24	190,198,212,213	0
5	NAG	C	2	14/15	0.90	0.33	164,171,173,177	0

## 6.4 Ligands [i](#)

In the following table, the Atoms column lists the number of modelled atoms in the group and the number defined in the chemical component dictionary. The B-factors column lists the minimum, median, 95<sup>th</sup> percentile and maximum values of B factors of atoms in the group. The column labelled 'Q< 0.9' lists the number of atoms with occupancy less than 0.9.

Mol	Type	Chain	Res	Atoms	RSCC	RSR	B-factors(Å <sup>2</sup> )	Q<0.9
7	NAG	E	412	14/15	0.47	0.43	197,206,209,209	0
7	NAG	E	402	14/15	0.74	0.19	184,191,198,199	0
7	NAG	E	408	14/15	0.91	0.26	124,137,151,156	0
7	NAG	E	407	14/15	0.92	0.25	94,98,106,109	0
6	SO4	E	401	5/5	0.93	0.25	130,134,137,139	0

## 6.5 Other polymers [i](#)

There are no such residues in this entry.