



# Full wwPDB X-ray Structure Validation Report ⓘ

May 25, 2020 – 05:33 am BST

PDB ID : 4XT1  
Title : Structure of a nanobody-bound viral GPCR bound to human chemokine CX3CL1  
Authors : Burg, J.S.; Jude, K.M.; Waghray, D.; Garcia, K.C.  
Deposited on : 2015-01-22  
Resolution : 2.89 Å(reported)

This is a Full wwPDB X-ray Structure Validation Report for a publicly released PDB entry.

We welcome your comments at [validation@mail.wwpdb.org](mailto:validation@mail.wwpdb.org)

A user guide is available at

<https://www.wwpdb.org/validation/2017/XrayValidationReportHelp>

with specific help available everywhere you see the ⓘ symbol.

---

The following versions of software and data (see [references ⓘ](#)) were used in the production of this report:

MolProbity : 4.02b-467  
Mogul : 1.8.5 (274361), CSD as541be (2020)  
Xtriage (Phenix) : 1.13  
EDS : 2.11  
buster-report : 1.1.7 (2018)  
Percentile statistics : 20191225.v01 (using entries in the PDB archive December 25th 2019)  
Refmac : 5.8.0158  
CCP4 : 7.0.044 (Gargrove)  
Ideal geometry (proteins) : Engh & Huber (2001)  
Ideal geometry (DNA, RNA) : Parkinson et al. (1996)  
Validation Pipeline (wwPDB-VP) : 2.11

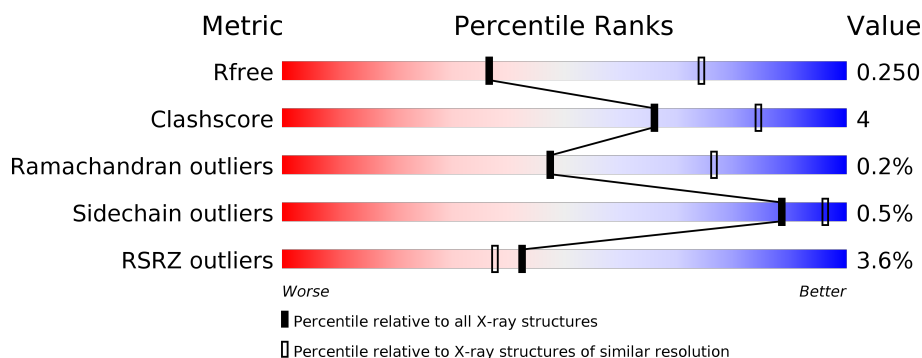
# 1 Overall quality at a glance

The following experimental techniques were used to determine the structure:

## *X-RAY DIFFRACTION*

The reported resolution of this entry is 2.89 Å.

Percentile scores (ranging between 0-100) for global validation metrics of the entry are shown in the following graphic. The table shows the number of entries on which the scores are based.



Metric	Whole archive (#Entries)	Similar resolution (#Entries, resolution range(Å))
$R_{free}$	130704	2691 (2.90-2.86)
Clashscore	141614	2947 (2.90-2.86)
Ramachandran outliers	138981	2868 (2.90-2.86)
Sidechain outliers	138945	2871 (2.90-2.86)
RSRZ outliers	127900	2629 (2.90-2.86)

The table below summarises the geometric issues observed across the polymeric chains and their fit to the electron density. The red, orange, yellow and green segments on the lower bar indicate the fraction of residues that contain outliers for  $\geq 3$ , 2, 1 and 0 types of geometric quality criteria respectively. A grey segment represents the fraction of residues that are not modelled. The numeric value for each fraction is indicated below the corresponding segment, with a dot representing fractions  $\leq 5\%$ . The upper red bar (where present) indicates the fraction of residues that have poor fit to the electron density. The numeric value is given above the bar.

Mol	Chain	Length	Quality of chain
1	A	362	<div> <div style="width: 100%; height: 10px; background-color: red; position: relative;"> <span style="position: absolute; top: -10px; left: 0;">%</span> </div> <div style="display: flex; justify-content: space-between; margin-top: 5px;"> <span>73%</span> <span>7%</span> <span>20%</span> </div> </div>
2	B	91	<div> <div style="width: 100%; height: 10px; background-color: red; position: relative;"> <span style="position: absolute; top: -10px; left: 0;">7%</span> </div> <div style="display: flex; justify-content: space-between; margin-top: 5px;"> <span>65%</span> <span>10%</span> <span>25%</span> </div> </div>
3	C	134	<div> <div style="width: 100%; height: 10px; background-color: red; position: relative;"> <span style="position: absolute; top: -10px; left: 0;">5%</span> </div> <div style="display: flex; justify-content: space-between; margin-top: 5px;"> <span>81%</span> <span>• •</span> <span>13%</span> </div> </div>

## 2 Entry composition

There are 8 unique types of molecules in this entry. The entry contains 3978 atoms, of which 0 are hydrogens and 0 are deuteriums.

In the tables below, the ZeroOcc column contains the number of atoms modelled with zero occupancy, the AltConf column contains the number of residues with at least one atom in alternate conformation and the Trace column contains the number of residues modelled with at most 2 atoms.

- Molecule 1 is a protein called G-protein coupled receptor homolog US28.

Mol	Chain	Residues	Atoms					ZeroOcc	AltConf	Trace
1	A	291	Total	C	N	O	S	0	0	0
			2357	1582	362	393	20			

There are 8 discrepancies between the modelled and reference sequences:

Chain	Residue	Modelled	Actual	Comment	Reference
A	-7	ASP	-	expression tag	UNP P69332
A	-6	TYR	-	expression tag	UNP P69332
A	-5	LYS	-	expression tag	UNP P69332
A	-4	ASP	-	expression tag	UNP P69332
A	-3	ASP	-	expression tag	UNP P69332
A	-2	ASP	-	expression tag	UNP P69332
A	-1	ASP	-	expression tag	UNP P69332
A	0	ALA	-	expression tag	UNP P69332

- Molecule 2 is a protein called Fractalkine.

Mol	Chain	Residues	Atoms					ZeroOcc	AltConf	Trace
2	B	68	Total	C	N	O	S	0	0	0
			474	297	82	90	5			

There are 15 discrepancies between the modelled and reference sequences:

Chain	Residue	Modelled	Actual	Comment	Reference
B	9	ALA	ASN	engineered mutation	UNP P78423
B	78	SER	-	expression tag	UNP P78423
B	79	GLY	-	expression tag	UNP P78423
B	80	SER	-	expression tag	UNP P78423
B	81	GLY	-	expression tag	UNP P78423
B	82	SER	-	expression tag	UNP P78423
B	83	ALA	-	expression tag	UNP P78423
B	84	ALA	-	expression tag	UNP P78423

*Continued on next page...*

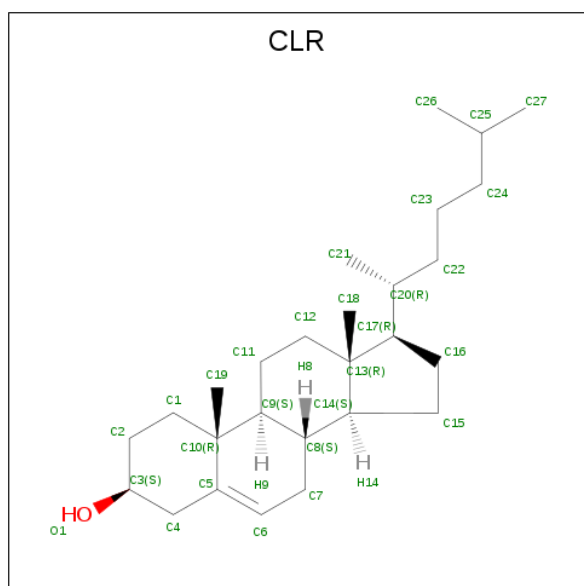
Continued from previous page...

Chain	Residue	Modelled	Actual	Comment	Reference
B	85	ALA	-	expression tag	UNP P78423
B	86	LEU	-	expression tag	UNP P78423
B	87	GLU	-	expression tag	UNP P78423
B	88	VAL	-	expression tag	UNP P78423
B	89	LEU	-	expression tag	UNP P78423
B	90	PHE	-	expression tag	UNP P78423
B	91	GLN	-	expression tag	UNP P78423

- Molecule 3 is a protein called nanobody 7.

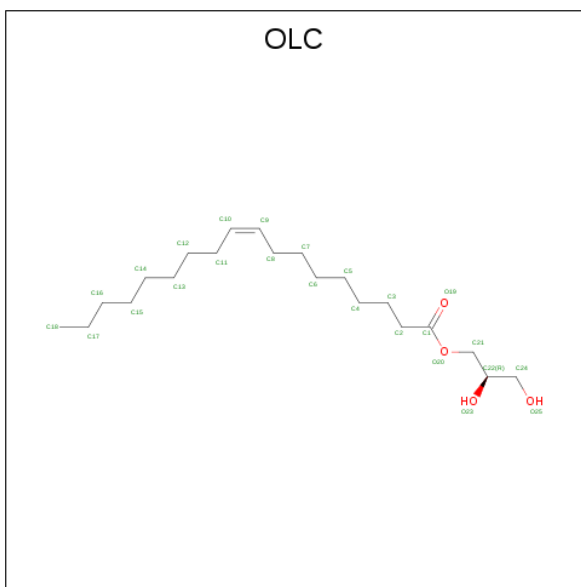
Mol	Chain	Residues	Atoms					ZeroOcc	AltConf	Trace
3	C	116	Total	C	N	O	S	0	0	0
			869	545	149	171	4			

- Molecule 4 is CHOLESTEROL (three-letter code: CLR) (formula:  $C_{27}H_{46}O$ ).



Mol	Chain	Residues	Atoms			ZeroOcc	AltConf
4	A	1	Total	C	O	0	0
			28	27	1		
4	A	1	Total	C	O	0	0
			28	27	1		

- Molecule 5 is (2R)-2,3-dihydroxypropyl (9Z)-octadec-9-enoate (three-letter code: OLC) (formula:  $C_{21}H_{40}O_4$ ).

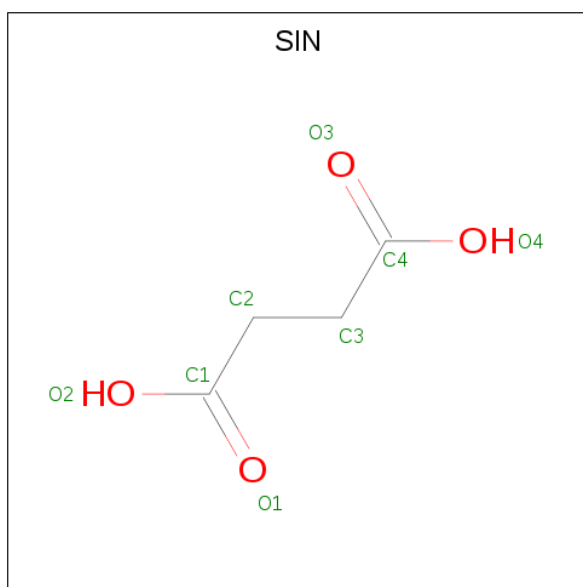


Mol	Chain	Residues	Atoms			ZeroOcc	AltConf
5	A	1	Total	C	O	0	0
			20	16	4		
5	A	1	Total	C	O	0	0
			20	16	4		
5	A	1	Total	C	O	0	0
			16	12	4		
5	A	1	Total	C	O	0	0
			21	17	4		
5	A	1	Total	C	O	0	0
			25	21	4		
5	A	1	Total	C	O	0	0
			14	10	4		

- Molecule 6 is UNKNOWN LIGAND (three-letter code: UNL) (formula: ).

Mol	Chain	Residues	Atoms		ZeroOcc	AltConf
6	A	7	Total	C	0	0
			75	75		

- Molecule 7 is SUCCINIC ACID (three-letter code: SIN) (formula: C<sub>4</sub>H<sub>6</sub>O<sub>4</sub>).



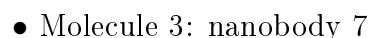
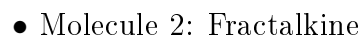
Mol	Chain	Residues	Atoms	ZeroOcc	AltConf
7	A	1	Total C O 8 4 4	0	0

- Molecule 8 is water.

Mol	Chain	Residues	Atoms	ZeroOcc	AltConf
8	A	18	Total O 18 18	0	0
8	B	1	Total O 1 1	0	0
8	C	4	Total O 4 4	0	0



- Molecule 1: G-protein coupled receptor homolog US28



## 4 Data and refinement statistics

Property	Value	Source
Space group	I 4	Depositor
Cell constants a, b, c, $\alpha$ , $\beta$ , $\gamma$	81.02Å 81.02Å 231.30Å 90.00° 90.00° 90.00°	Depositor
Resolution (Å)	38.23 – 2.89 38.23 – 2.89	Depositor EDS
% Data completeness (in resolution range)	99.6 (38.23-2.89) 94.3 (38.23-2.89)	Depositor EDS
$R_{merge}$	0.20	Depositor
$R_{sym}$	(Not available)	Depositor
$\langle I/\sigma(I) \rangle$ <sup>1</sup>	1.77 (at 2.90Å)	Xtriage
Refinement program	PHENIX dev_1839	Depositor
R, $R_{free}$	0.199 , 0.249 0.199 , 0.250	Depositor DCC
$R_{free}$ test set	1659 reflections (9.97%)	wwPDB-VP
Wilson B-factor (Å <sup>2</sup> )	52.6	Xtriage
Anisotropy	0.086	Xtriage
Bulk solvent $k_{sol}$ (e/Å <sup>3</sup> ), $B_{sol}$ (Å <sup>2</sup> )	0.31 , 64.5	EDS
L-test for twinning <sup>2</sup>	$\langle  L  \rangle = 0.48$ , $\langle L^2 \rangle = 0.31$	Xtriage
Estimated twinning fraction	0.060 for -h,k,-l	Xtriage
$F_o, F_c$ correlation	0.92	EDS
Total number of atoms	3978	wwPDB-VP
Average B, all atoms (Å <sup>2</sup> )	66.0	wwPDB-VP

Xtriage's analysis on translational NCS is as follows: *The largest off-origin peak in the Patterson function is 6.46% of the height of the origin peak. No significant pseudotranslation is detected.*

<sup>1</sup>Intensities estimated from amplitudes.

<sup>2</sup>Theoretical values of  $\langle |L| \rangle$ ,  $\langle L^2 \rangle$  for acentric reflections are 0.5, 0.333 respectively for untwinned datasets, and 0.375, 0.2 for perfectly twinned datasets.



## 5 Model quality

### 5.1 Standard geometry

Bond lengths and bond angles in the following residue types are not validated in this section: UNL, OLC, PCA, SIN, CLR

The Z score for a bond length (or angle) is the number of standard deviations the observed value is removed from the expected value. A bond length (or angle) with  $|Z| > 5$  is considered an outlier worth inspection. RMSZ is the root-mean-square of all Z scores of the bond lengths (or angles).

Mol	Chain	Bond lengths		Bond angles	
		RMSZ	# Z  >5	RMSZ	# Z  >5
1	A	0.22	0/2423	0.36	0/3306
2	B	0.19	0/475	0.33	0/652
3	C	0.21	0/885	0.36	0/1202
All	All	0.21	0/3783	0.36	0/5160

There are no bond length outliers.

There are no bond angle outliers.

There are no chirality outliers.

There are no planarity outliers.

### 5.2 Too-close contacts

In the following table, the Non-H and H(model) columns list the number of non-hydrogen atoms and hydrogen atoms in the chain respectively. The H(added) column lists the number of hydrogen atoms added and optimized by MolProbity. The Clashes column lists the number of clashes within the asymmetric unit, whereas Symm-Clashes lists symmetry related clashes.

Mol	Chain	Non-H	H(model)	H(added)	Clashes	Symm-Clashes
1	A	2357	0	2380	18	0
2	B	474	0	415	5	0
3	C	869	0	826	5	0
4	A	56	0	92	6	0
5	A	116	0	161	5	0
6	A	75	0	0	0	0
7	A	8	0	4	0	0
8	A	18	0	0	0	0
8	B	1	0	0	0	0
8	C	4	0	0	0	0
All	All	3978	0	3878	31	0

The all-atom clashscore is defined as the number of clashes found per 1000 atoms (including hydrogen atoms). The all-atom clashscore for this structure is 4.

All (31) close contacts within the same asymmetric unit are listed below, sorted by their clash magnitude.

Atom-1	Atom-2	Interatomic distance (Å)	Clash overlap (Å)
1:A:231:ILE:HG12	5:A:406:OLC:H2	1.80	0.63
1:A:243:PRO:HA	4:A:401:CLR:H161	1.82	0.61
1:A:246:LEU:HB3	4:A:401:CLR:H151	1.84	0.59
3:C:34:MET:HB2	3:C:78:VAL:HG21	1.86	0.56
1:A:234:VAL:HG11	5:A:406:OLC:H7A	1.88	0.56
1:A:121:PHE:O	1:A:125:ILE:HG12	2.08	0.53
1:A:54:VAL:HG13	1:A:292:VAL:HG21	1.89	0.52
1:A:27:ASP:OD2	1:A:267:ARG:NH2	2.45	0.50
3:C:71:ARG:HB3	3:C:78:VAL:HG22	1.95	0.49
1:A:70:VAL:O	1:A:74:ASN:ND2	2.36	0.49
1:A:35:VAL:HG13	5:A:403:OLC:H8A	1.95	0.48
2:B:6:THR:HG22	2:B:8:CYS:H	1.80	0.47
1:A:209:TYR:CE2	5:A:407:OLC:H6A	2.50	0.46
1:A:271:ARG:HD2	4:A:402:CLR:H42	1.98	0.46
4:A:401:CLR:H11	4:A:402:CLR:H11	1.98	0.46
1:A:194:LEU:HA	1:A:198:VAL:HB	1.99	0.45
4:A:402:CLR:H232	4:A:402:CLR:H211	1.62	0.45
2:B:19:ILE:HG21	2:B:57:TRP:CE3	2.51	0.45
2:B:38:ALA:HA	2:B:53:PRO:HD3	2.00	0.44
4:A:401:CLR:H211	4:A:401:CLR:H232	1.58	0.44
2:B:16:THR:HG21	2:B:49:PHE:HB3	2.01	0.43
2:B:18:LYS:HB2	2:B:18:LYS:HE3	1.85	0.43
3:C:100:THR:O	3:C:102:VAL:N	2.48	0.43
1:A:54:VAL:O	1:A:58:ILE:HG13	2.19	0.42
1:A:124:GLU:OE2	1:A:151:TRP:NE1	2.52	0.42
1:A:230:LEU:HD21	3:C:101:ILE:HD13	2.01	0.42
3:C:90:THR:HG23	3:C:115:THR:HA	2.02	0.41
1:A:158:ILE:HA	1:A:158:ILE:HD12	1.95	0.41
1:A:211:ILE:O	1:A:215:VAL:HG23	2.20	0.41
5:A:403:OLC:H8	5:A:403:OLC:H11	1.70	0.41
1:A:193:MET:HE1	1:A:249:PHE:HD1	1.86	0.41

There are no symmetry-related clashes.

## 5.3 Torsion angles

### 5.3.1 Protein backbone

In the following table, the Percentiles column shows the percent Ramachandran outliers of the chain as a percentile score with respect to all X-ray entries followed by that with respect to entries of similar resolution.

The Analysed column shows the number of residues for which the backbone conformation was analysed, and the total number of residues.

Mol	Chain	Analysed	Favoured	Allowed	Outliers	Percentiles	
1	A	287/362 (79%)	277 (96%)	9 (3%)	1 (0%)	41	70
2	B	66/91 (72%)	62 (94%)	4 (6%)	0	100	100
3	C	114/134 (85%)	111 (97%)	3 (3%)	0	100	100
All	All	467/587 (80%)	450 (96%)	16 (3%)	1 (0%)	47	76

All (1) Ramachandran outliers are listed below:

Mol	Chain	Res	Type
1	A	17	ASP

### 5.3.2 Protein sidechains

In the following table, the Percentiles column shows the percent sidechain outliers of the chain as a percentile score with respect to all X-ray entries followed by that with respect to entries of similar resolution.

The Analysed column shows the number of residues for which the sidechain conformation was analysed, and the total number of residues.

Mol	Chain	Analysed	Rotameric	Outliers	Percentiles	
1	A	260/334 (78%)	260 (100%)	0	100	100
2	B	43/72 (60%)	43 (100%)	0	100	100
3	C	87/105 (83%)	85 (98%)	2 (2%)	50	79
All	All	390/511 (76%)	388 (100%)	2 (0%)	88	96

All (2) residues with a non-rotameric sidechain are listed below:

Mol	Chain	Res	Type
3	C	71	ARG
3	C	100	THR

Some sidechains can be flipped to improve hydrogen bonding and reduce clashes. There are no such sidechains identified.

### 5.3.3 RNA ⓘ

There are no RNA molecules in this entry.

## 5.4 Non-standard residues in protein, DNA, RNA chains ⓘ

1 non-standard protein/DNA/RNA residue is modelled in this entry.

In the following table, the Counts columns list the number of bonds (or angles) for which Mogul statistics could be retrieved, the number of bonds (or angles) that are observed in the model and the number of bonds (or angles) that are defined in the Chemical Component Dictionary. The Link column lists molecule types, if any, to which the group is linked. The Z score for a bond length (or angle) is the number of standard deviations the observed value is removed from the expected value. A bond length (or angle) with  $|Z| > 2$  is considered an outlier worth inspection. RMSZ is the root-mean-square of all Z scores of the bond lengths (or angles).

Mol	Type	Chain	Res	Link	Bond lengths			Bond angles		
					Counts	RMSZ	$\# Z  > 2$	Counts	RMSZ	$\# Z  > 2$
2	PCA	B	1	2	7,8,9	1.80	1 (14%)	9,10,12	2.23	5 (55%)

In the following table, the Chirals column lists the number of chiral outliers, the number of chiral centers analysed, the number of these observed in the model and the number defined in the Chemical Component Dictionary. Similar counts are reported in the Torsion and Rings columns. '-' means no outliers of that kind were identified.

Mol	Type	Chain	Res	Link	Chirals	Torsions	Rings
2	PCA	B	1	2	-	0/0/11/13	0/1/1/1

All (1) bond length outliers are listed below:

Mol	Chain	Res	Type	Atoms	Z	Observed(Å)	Ideal(Å)
2	B	1	PCA	CD-N	4.63	1.46	1.34

All (5) bond angle outliers are listed below:

Mol	Chain	Res	Type	Atoms	Z	Observed(°)	Ideal(°)
2	B	1	PCA	CB-CA-C	-3.14	108.38	112.70
2	B	1	PCA	OE-CD-CG	-3.05	121.45	126.76
2	B	1	PCA	CA-N-CD	-2.92	103.57	113.58
2	B	1	PCA	CB-CA-N	2.60	110.76	103.30

*Continued on next page...*

*Continued from previous page...*

Mol	Chain	Res	Type	Atoms	Z	Observed(°)	Ideal(°)
2	B	1	PCA	CG-CD-N	2.44	114.70	108.39

There are no chirality outliers.

There are no torsion outliers.

There are no ring outliers.

No monomer is involved in short contacts.

## 5.5 Carbohydrates [i](#)

There are no carbohydrates in this entry.

## 5.6 Ligand geometry [i](#)

Of 16 ligands modelled in this entry, 7 are unknown - leaving 9 for Mogul analysis.

In the following table, the Counts columns list the number of bonds (or angles) for which Mogul statistics could be retrieved, the number of bonds (or angles) that are observed in the model and the number of bonds (or angles) that are defined in the Chemical Component Dictionary. The Link column lists molecule types, if any, to which the group is linked. The Z score for a bond length (or angle) is the number of standard deviations the observed value is removed from the expected value. A bond length (or angle) with  $|Z| > 2$  is considered an outlier worth inspection. RMSZ is the root-mean-square of all Z scores of the bond lengths (or angles).

Mol	Type	Chain	Res	Link	Bond lengths			Bond angles		
					Counts	RMSZ	$\# Z  > 2$	Counts	RMSZ	$\# Z  > 2$
4	CLR	A	402	-	31,31,31	0.51	0	48,48,48	1.15	2 (4%)
7	SIN	A	416	-	1,7,7	0.16	0	2,8,8	0.94	0
5	OLC	A	404	-	19,19,24	1.04	1 (5%)	20,20,25	0.90	1 (5%)
5	OLC	A	407	-	24,24,24	0.93	1 (4%)	25,25,25	0.90	2 (8%)
5	OLC	A	403	-	19,19,24	1.04	1 (5%)	20,20,25	0.87	1 (5%)
5	OLC	A	406	-	20,20,24	1.03	1 (5%)	21,21,25	0.96	2 (9%)
5	OLC	A	408	-	13,13,24	1.27	1 (7%)	14,14,25	1.03	1 (7%)
5	OLC	A	405	-	15,15,24	1.14	1 (6%)	16,16,25	0.89	1 (6%)
4	CLR	A	401	-	31,31,31	0.53	0	48,48,48	1.23	5 (10%)

In the following table, the Chirals column lists the number of chiral outliers, the number of chiral centers analysed, the number of these observed in the model and the number defined in the Chemical Component Dictionary. Similar counts are reported in the Torsion and Rings columns. '-' means no outliers of that kind were identified.

Mol	Type	Chain	Res	Link	Chirals	Torsions	Rings
4	CLR	A	402	-	-	6/10/68/68	0/4/4/4
7	SIN	A	416	-	-	0/1/5/5	-
5	OLC	A	404	-	-	6/19/19/24	-
5	OLC	A	407	-	-	11/24/24/24	-
5	OLC	A	403	-	-	3/19/19/24	-
5	OLC	A	406	-	-	4/20/20/24	-
5	OLC	A	408	-	-	7/13/13/24	-
5	OLC	A	405	-	-	3/15/15/24	-
4	CLR	A	401	-	-	7/10/68/68	0/4/4/4

All (6) bond length outliers are listed below:

Mol	Chain	Res	Type	Atoms	Z	Observed(Å)	Ideal(Å)
5	A	406	OLC	O20-C1	4.37	1.46	1.33
5	A	408	OLC	O20-C1	4.35	1.46	1.33
5	A	403	OLC	O20-C1	4.31	1.45	1.33
5	A	407	OLC	O20-C1	4.31	1.45	1.33
5	A	404	OLC	O20-C1	4.30	1.45	1.33
5	A	405	OLC	O20-C1	4.22	1.45	1.33

All (15) bond angle outliers are listed below:

Mol	Chain	Res	Type	Atoms	Z	Observed(°)	Ideal(°)
4	A	401	CLR	C13-C17-C20	-3.50	114.00	119.49
4	A	402	CLR	C13-C17-C20	-3.23	114.42	119.49
5	A	406	OLC	O20-C1-C2	2.78	120.62	111.91
5	A	408	OLC	O20-C1-C2	2.74	120.49	111.91
4	A	401	CLR	C13-C14-C8	-2.72	110.36	114.38
5	A	407	OLC	O20-C1-C2	2.64	120.21	111.91
5	A	404	OLC	O20-C1-C2	2.53	119.85	111.91
5	A	403	OLC	O20-C1-C2	2.42	119.50	111.91
4	A	401	CLR	C8-C7-C6	-2.31	109.41	112.73
5	A	405	OLC	O20-C1-C2	2.28	119.06	111.91
4	A	401	CLR	C10-C9-C8	-2.20	109.43	112.73
4	A	402	CLR	C13-C14-C8	-2.18	111.15	114.38
5	A	407	OLC	O20-C1-O19	-2.16	118.14	123.59
5	A	406	OLC	O20-C1-O19	-2.16	118.14	123.59
4	A	401	CLR	C11-C9-C10	-2.03	110.41	113.08

There are no chirality outliers.

All (47) torsion outliers are listed below:

Mol	Chain	Res	Type	Atoms
5	A	408	OLC	O20-C21-C22-O23
5	A	408	OLC	C2-C1-O20-C21
5	A	408	OLC	O19-C1-O20-C21
4	A	401	CLR	C21-C20-C22-C23
4	A	402	CLR	C22-C23-C24-C25
5	A	405	OLC	C1-C2-C3-C4
4	A	402	CLR	C20-C22-C23-C24
5	A	405	OLC	O20-C21-C22-O23
5	A	408	OLC	O20-C21-C22-C24
5	A	408	OLC	C1-C2-C3-C4
5	A	407	OLC	C5-C6-C7-C8
5	A	407	OLC	C4-C5-C6-C7
5	A	405	OLC	C3-C4-C5-C6
5	A	404	OLC	O20-C21-C22-O23
5	A	407	OLC	C14-C15-C16-C17
5	A	403	OLC	C1-C2-C3-C4
5	A	406	OLC	C2-C3-C4-C5
5	A	407	OLC	C13-C14-C15-C16
5	A	407	OLC	C6-C7-C8-C9
4	A	401	CLR	C20-C22-C23-C24
5	A	404	OLC	C3-C4-C5-C6
4	A	401	CLR	C13-C17-C20-C21
5	A	407	OLC	O20-C21-C22-C24
5	A	407	OLC	O23-C22-C24-O25
4	A	401	CLR	C13-C17-C20-C22
5	A	404	OLC	C2-C3-C4-C5
5	A	404	OLC	C4-C5-C6-C7
5	A	403	OLC	C4-C5-C6-C7
5	A	404	OLC	C2-C1-O20-C21
5	A	407	OLC	O20-C21-C22-O23
4	A	402	CLR	C13-C17-C20-C21
4	A	402	CLR	C13-C17-C20-C22
5	A	404	OLC	O19-C1-O20-C21
4	A	402	CLR	C21-C20-C22-C23
4	A	401	CLR	C16-C17-C20-C22
5	A	407	OLC	C3-C4-C5-C6
5	A	403	OLC	C5-C6-C7-C8
4	A	401	CLR	C16-C17-C20-C21
5	A	408	OLC	O20-C1-C2-C3
5	A	406	OLC	O20-C21-C22-C24
5	A	406	OLC	C7-C8-C9-C10
5	A	407	OLC	C9-C10-C11-C12
4	A	402	CLR	C16-C17-C20-C22

*Continued on next page...*

*Continued from previous page...*

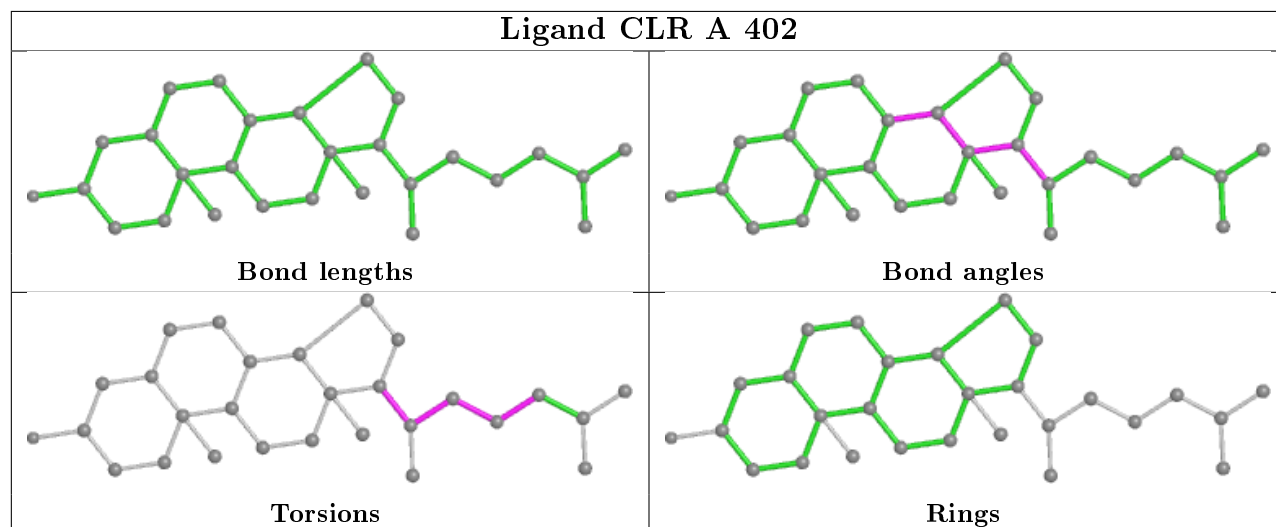
Mol	Chain	Res	Type	Atoms
5	A	407	OLC	C21-C22-C24-O25
5	A	408	OLC	O19-C1-C2-C3
4	A	401	CLR	C22-C23-C24-C25
5	A	406	OLC	O20-C21-C22-O23

There are no ring outliers.

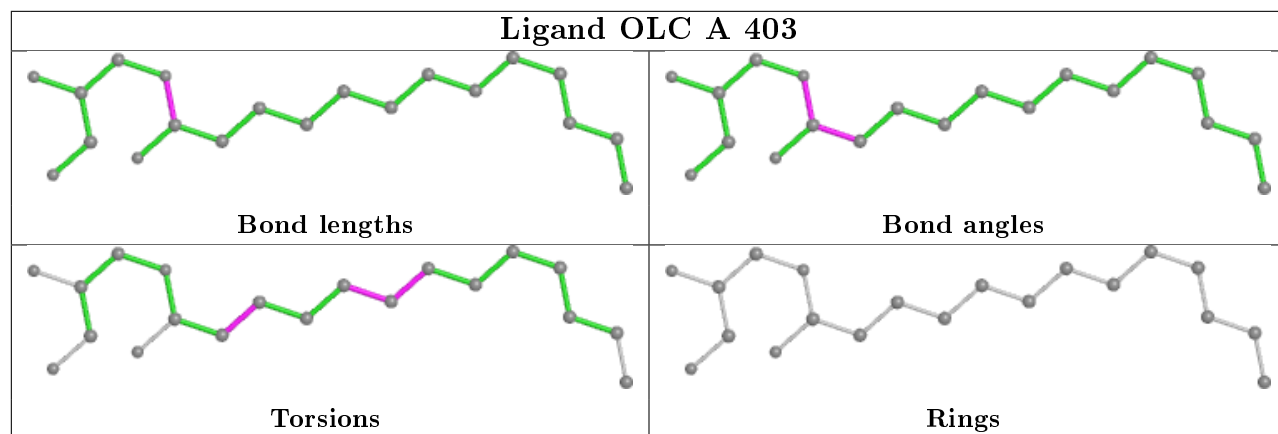
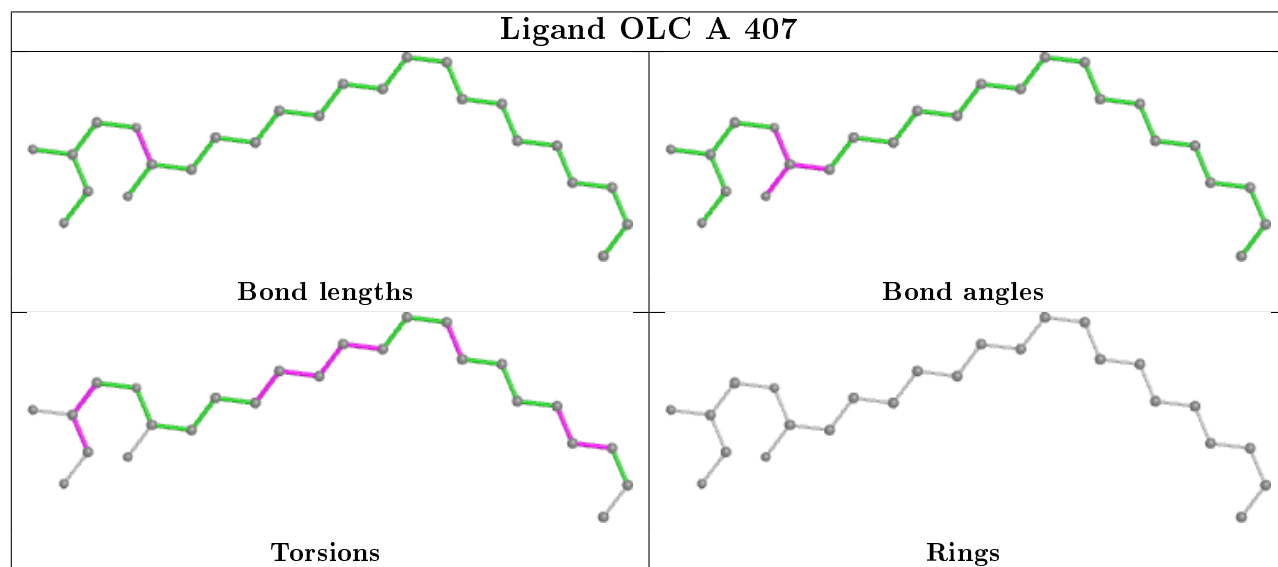
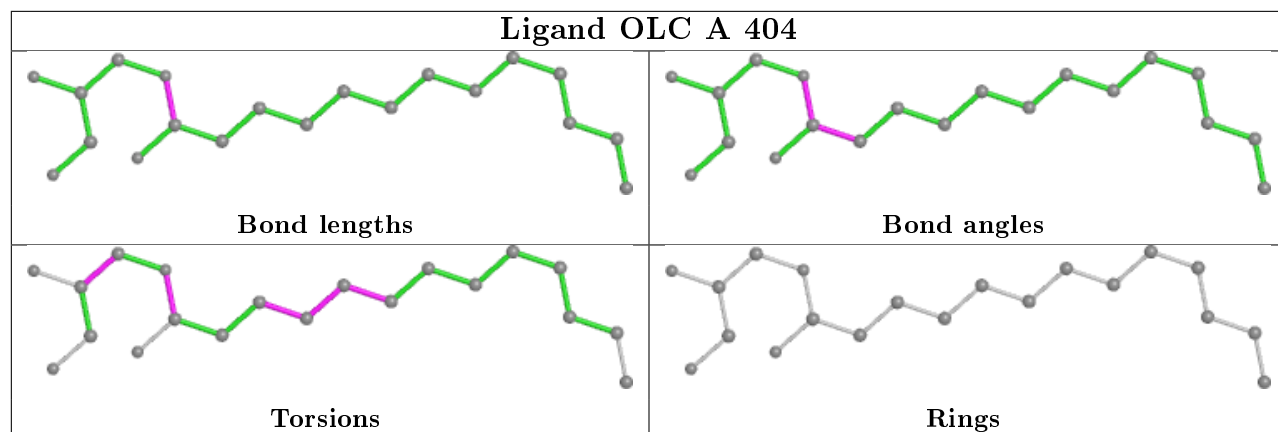
5 monomers are involved in 11 short contacts:

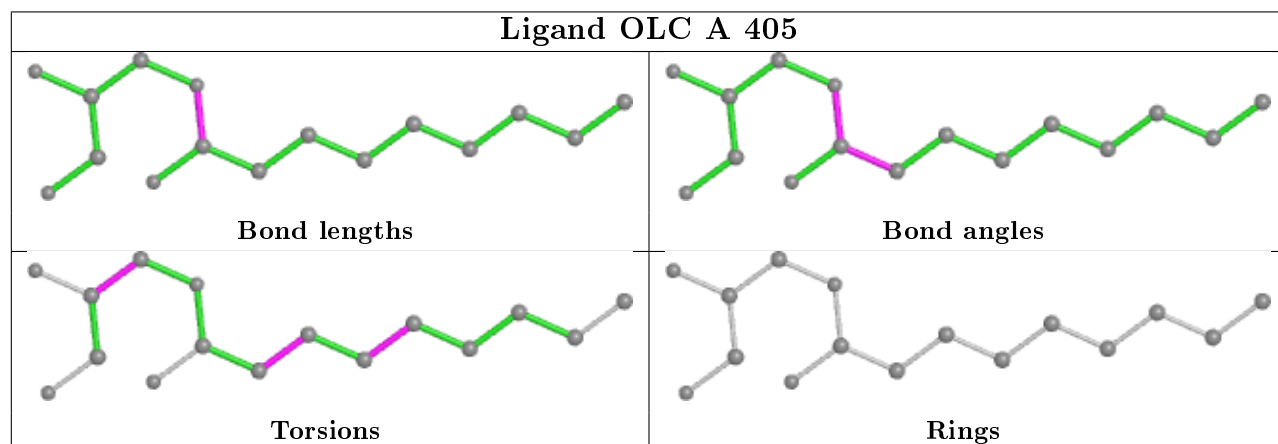
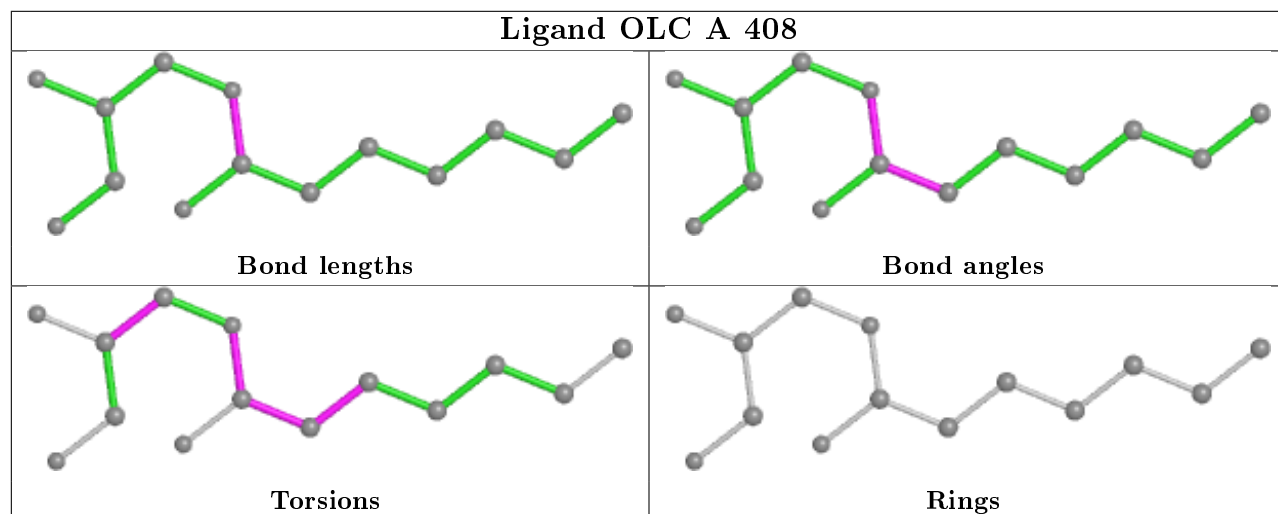
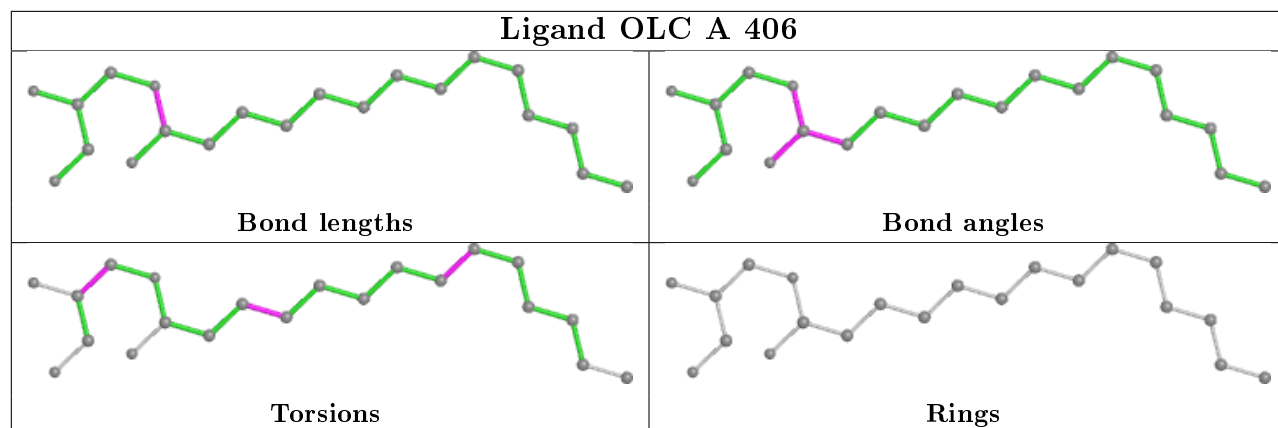
Mol	Chain	Res	Type	Clashes	Symm-Clashes
4	A	402	CLR	3	0
5	A	407	OLC	1	0
5	A	403	OLC	2	0
5	A	406	OLC	2	0
4	A	401	CLR	4	0

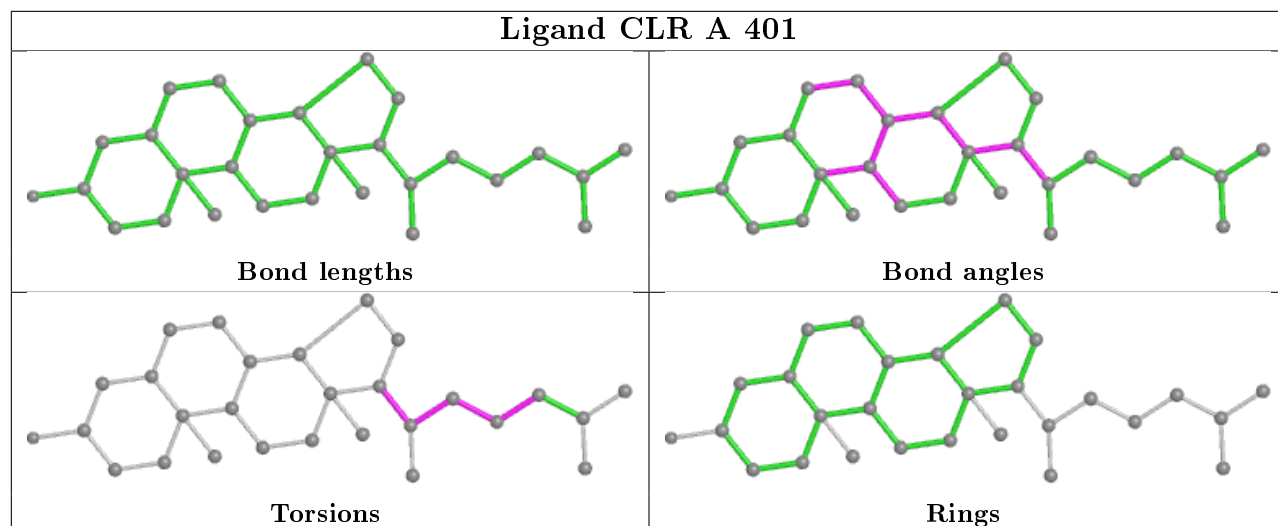
The following is a two-dimensional graphical depiction of Mogul quality analysis of bond lengths, bond angles, torsion angles, and ring geometry for all instances of the Ligand of Interest. In addition, ligands with molecular weight > 250 and outliers as shown on the validation Tables will also be included. For torsion angles, if less than 5% of the Mogul distribution of torsion angles is within 10 degrees of the torsion angle in question, then that torsion angle is considered an outlier. Any bond that is central to one or more torsion angles identified as an outlier by Mogul will be highlighted in the graph. For rings, the root-mean-square deviation (RMSD) between the ring in question and similar rings identified by Mogul is calculated over all ring torsion angles. If the average RMSD is greater than 60 degrees and the minimal RMSD between the ring in question and any Mogul-identified rings is also greater than 60 degrees, then that ring is considered an outlier. The outliers are highlighted in purple. The color gray indicates Mogul did not find sufficient equivalents in the CSD to analyse the geometry.











## 5.7 Other polymers [i](#)

There are no such residues in this entry.

## 5.8 Polymer linkage issues [i](#)

There are no chain breaks in this entry.

## 6 Fit of model and data [i](#)

### 6.1 Protein, DNA and RNA chains [i](#)

In the following table, the column labelled ‘#RSRZ> 2’ contains the number (and percentage) of RSRZ outliers, followed by percent RSRZ outliers for the chain as percentile scores relative to all X-ray entries and entries of similar resolution. The OWAB column contains the minimum, median, 95<sup>th</sup> percentile and maximum values of the occupancy-weighted average B-factor per residue. The column labelled ‘Q< 0.9’ lists the number of (and percentage) of residues with an average occupancy less than 0.9.

Mol	Chain	Analysed	<RSRZ>	#RSRZ>2	OWAB(Å <sup>2</sup> )	Q<0.9
1	A	291/362 (80%)	-0.38	4 (1%) 75 75	30, 49, 89, 165	0
2	B	67/91 (73%)	0.43	6 (8%) 9 6	50, 107, 146, 162	0
3	C	116/134 (86%)	0.04	7 (6%) 21 17	40, 76, 119, 144	0
All	All	474/587 (80%)	-0.16	17 (3%) 42 38	30, 57, 123, 165	0

All (17) RSRZ outliers are listed below:

Mol	Chain	Res	Type	RSRZ
1	A	15	ASP	4.5
3	C	44	GLN	4.1
2	B	20	PRO	3.5
2	B	24	LEU	3.4
2	B	19	ILE	3.3
1	A	16	TYR	2.9
2	B	21	VAL	2.7
3	C	74	ALA	2.7
2	B	22	ALA	2.6
1	A	101	SER	2.5
3	C	11	LEU	2.4
2	B	43	THR	2.4
3	C	25	SER	2.3
3	C	12	VAL	2.2
3	C	1	GLN	2.2
3	C	87	PRO	2.1
1	A	179	TYR	2.1

### 6.2 Non-standard residues in protein, DNA, RNA chains [i](#)

In the following table, the Atoms column lists the number of modelled atoms in the group and the number defined in the chemical component dictionary. The B-factors column lists the minimum,

median, 95<sup>th</sup> percentile and maximum values of B factors of atoms in the group. The column labelled 'Q< 0.9' lists the number of atoms with occupancy less than 0.9.

Mol	Type	Chain	Res	Atoms	RSCC	RSR	B-factors(Å <sup>2</sup> )	Q<0.9
2	PCA	B	1	8/9	0.93	0.20	43,58,67,73	0

### 6.3 Carbohydrates [i](#)

There are no carbohydrates in this entry.

### 6.4 Ligands [i](#)

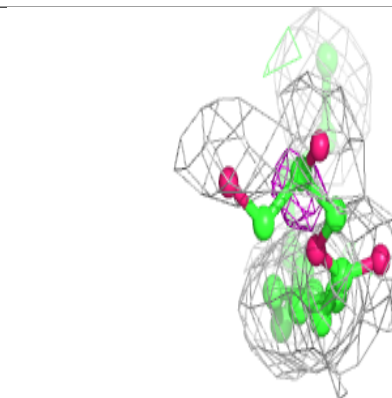
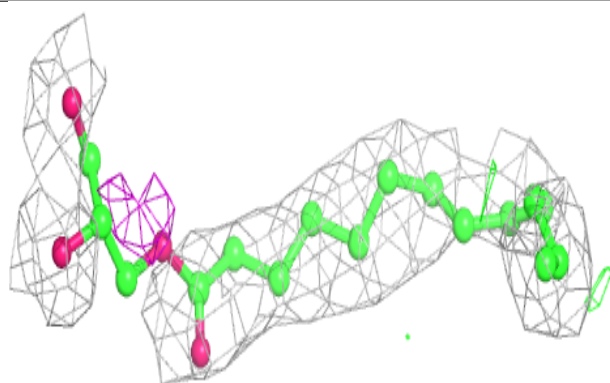
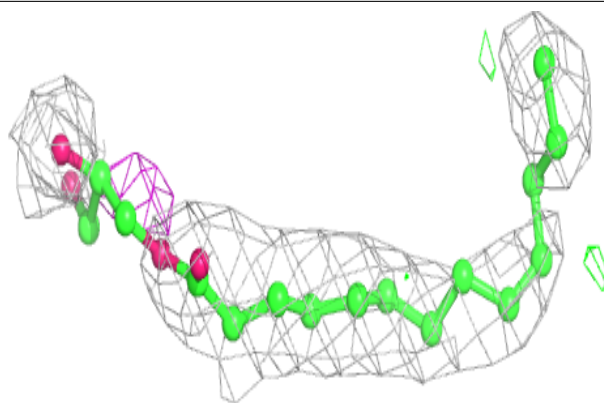
In the following table, the Atoms column lists the number of modelled atoms in the group and the number defined in the chemical component dictionary. The B-factors column lists the minimum, median, 95<sup>th</sup> percentile and maximum values of B factors of atoms in the group. The column labelled 'Q< 0.9' lists the number of atoms with occupancy less than 0.9.

Mol	Type	Chain	Res	Atoms	RSCC	RSR	B-factors(Å <sup>2</sup> )	Q<0.9
5	OLC	A	403	20/25	0.64	0.39	43,78,125,126	0
5	OLC	A	408	14/25	0.74	0.28	56,89,116,123	0
5	OLC	A	407	25/25	0.76	0.30	49,73,114,122	0
6	UNL	A	415	12/-	0.78	0.32	57,67,77,95	0
5	OLC	A	404	20/25	0.79	0.29	69,81,106,107	0
5	OLC	A	405	16/25	0.79	0.35	58,90,106,109	0
4	CLR	A	401	28/28	0.85	0.43	78,100,112,120	0
6	UNL	A	414	12/-	0.88	0.30	56,61,66,70	0
6	UNL	A	410	12/-	0.88	0.27	40,64,82,83	0
4	CLR	A	402	28/28	0.88	0.25	63,78,92,101	0
6	UNL	A	409	7/-	0.88	0.19	47,55,64,66	0
5	OLC	A	406	21/25	0.88	0.29	52,74,94,95	0
6	UNL	A	411	10/-	0.90	0.27	54,64,78,85	0
7	SIN	A	416	8/8	0.90	0.35	73,86,98,107	0
6	UNL	A	412	12/-	0.90	0.20	39,56,68,75	0
6	UNL	A	413	10/-	0.92	0.22	42,52,62,65	0

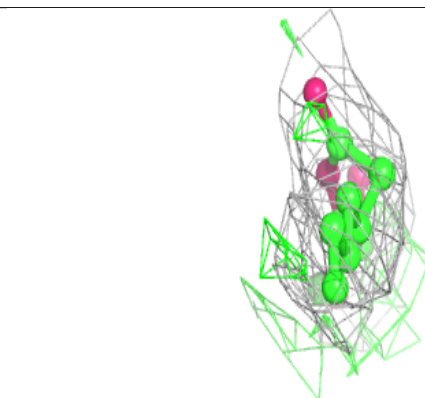
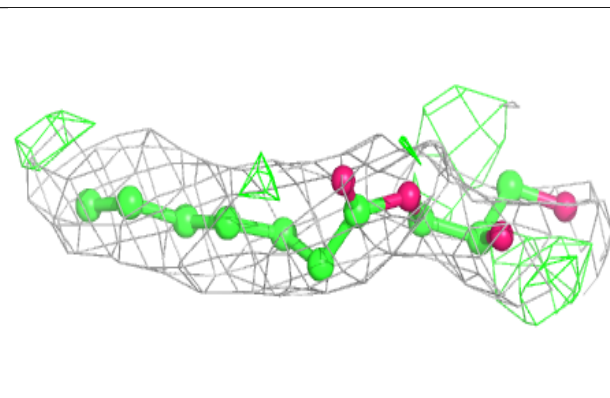
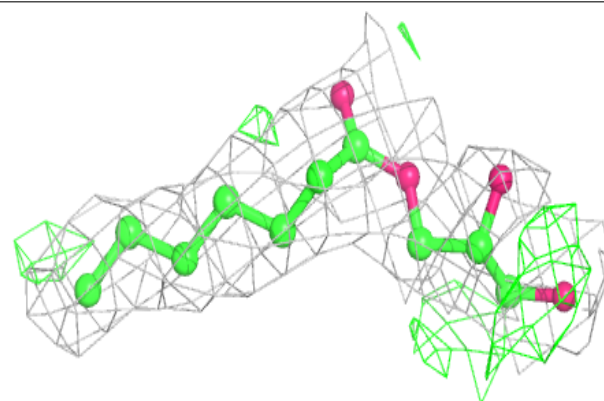
The following is a graphical depiction of the model fit to experimental electron density of all instances of the Ligand of Interest. In addition, ligands with molecular weight > 250 and outliers as shown on the geometry validation Tables will also be included. Each fit is shown from different orientation to approximate a three-dimensional view.

**Electron density around OLC A 403:**

$2mF_o-DF_c$  (at 0.7 rmsd) in gray  
 $mF_o-DF_c$  (at 3 rmsd) in purple (negative)  
and green (positive)

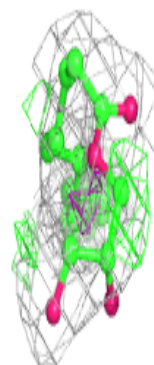
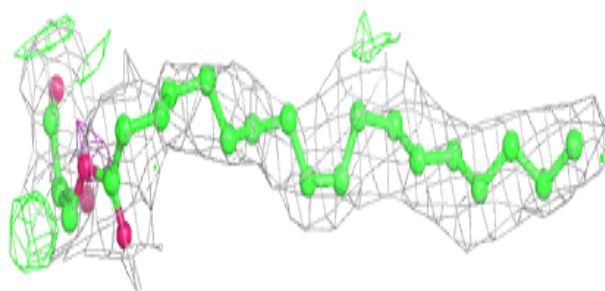
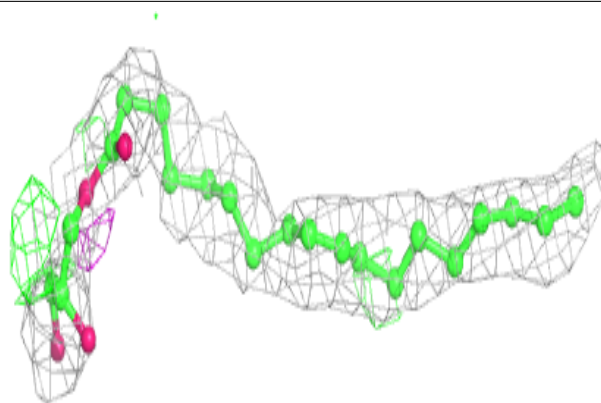
**Electron density around OLC A 408:**

$2mF_o-DF_c$  (at 0.7 rmsd) in gray  
 $mF_o-DF_c$  (at 3 rmsd) in purple (negative)  
and green (positive)

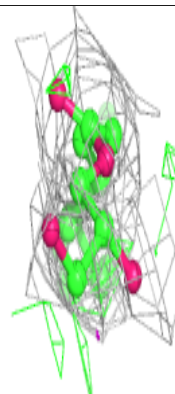
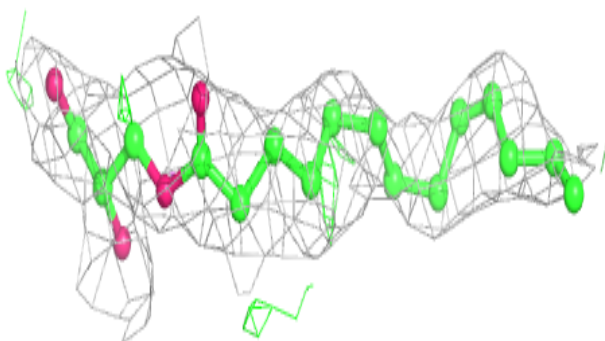
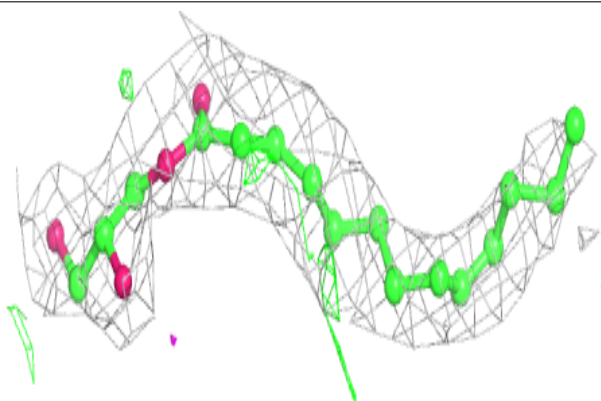


**Electron density around OLC A 407:**

$2mF_o-DF_c$  (at 0.7 rmsd) in gray  
 $mF_o-DF_c$  (at 3 rmsd) in purple (negative)  
and green (positive)

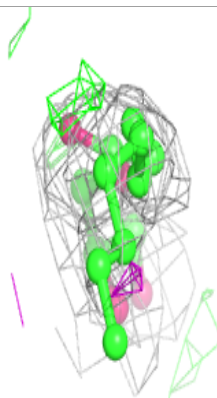
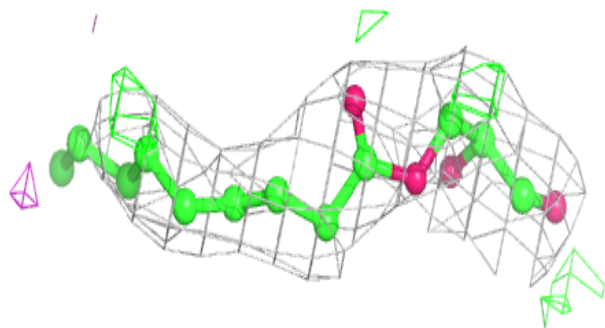
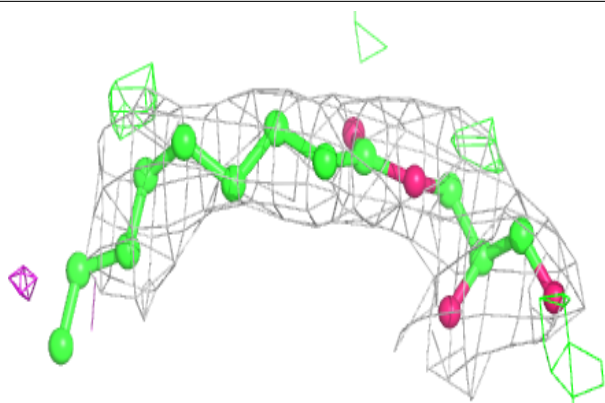
**Electron density around OLC A 404:**

$2mF_o-DF_c$  (at 0.7 rmsd) in gray  
 $mF_o-DF_c$  (at 3 rmsd) in purple (negative)  
and green (positive)

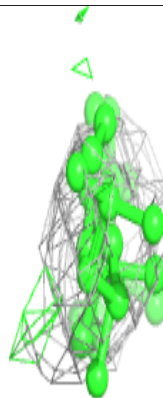
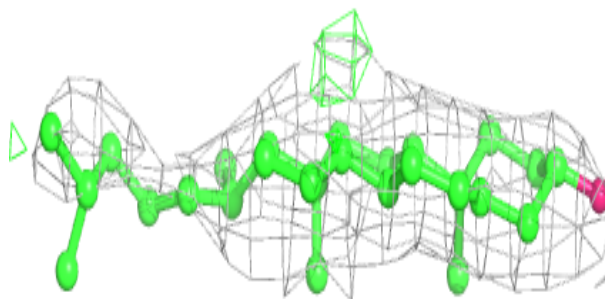
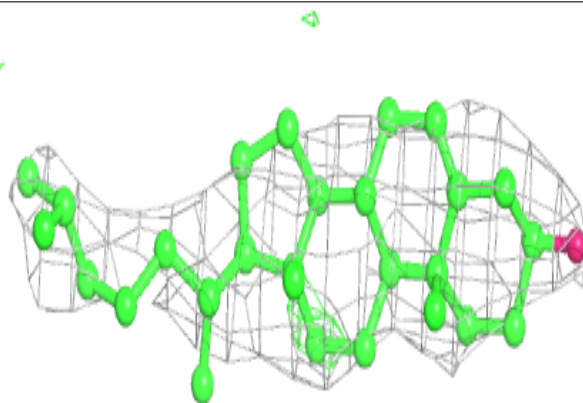


**Electron density around OLC A 405:**

$2mF_o-DF_c$  (at 0.7 rmsd) in gray  
 $mF_o-DF_c$  (at 3 rmsd) in purple (negative)  
and green (positive)

**Electron density around CLR A 401:**

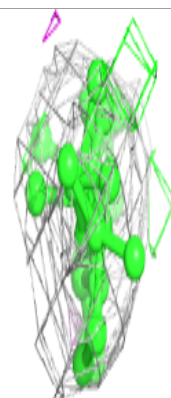
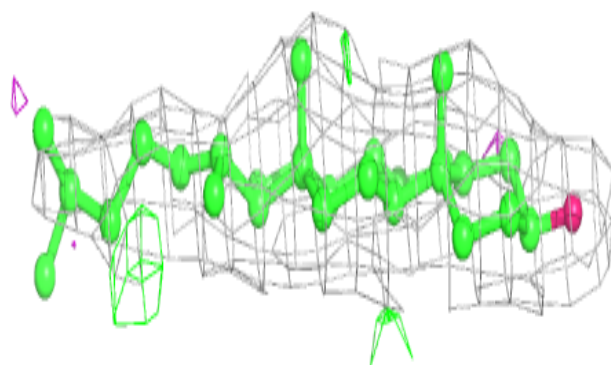
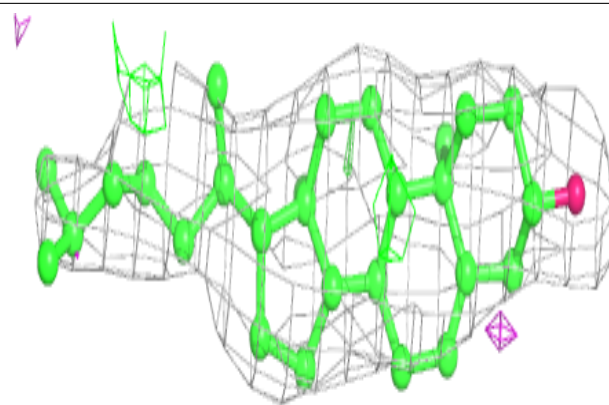
$2mF_o-DF_c$  (at 0.7 rmsd) in gray  
 $mF_o-DF_c$  (at 3 rmsd) in purple (negative)  
and green (positive)



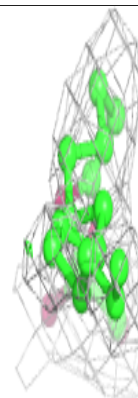
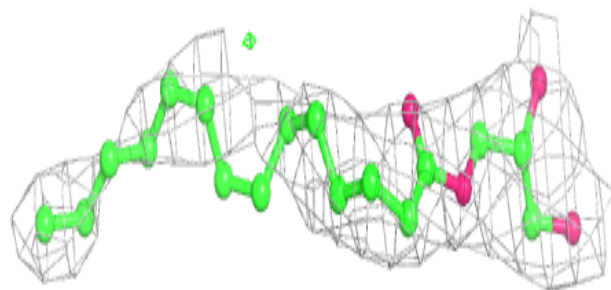
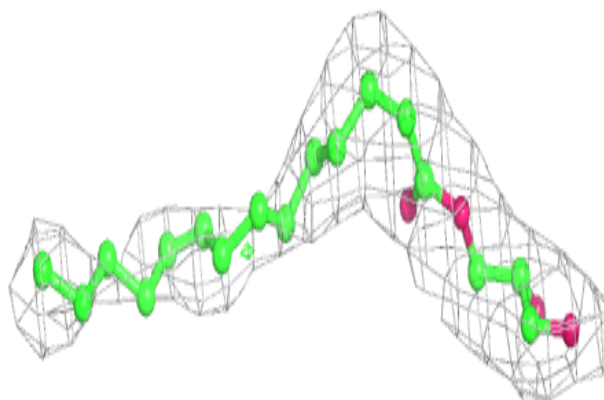


**Electron density around CLR A 402:**

$2mF_o-DF_c$  (at 0.7 rmsd) in gray  
 $mF_o-DF_c$  (at 3 rmsd) in purple (negative)  
and green (positive)

**Electron density around OLC A 406:**

$2mF_o-DF_c$  (at 0.7 rmsd) in gray  
 $mF_o-DF_c$  (at 3 rmsd) in purple (negative)  
and green (positive)



## 6.5 Other polymers

There are no such residues in this entry.