



# Full wwPDB X-ray Structure Validation Report ⓘ

May 22, 2020 – 03:27 am BST

PDB ID : 5XTQ  
Title : Crystal structure of baculoviral sulfhydryl oxidase P33 (H227D mutant)  
Authors : Kuang, W.; Hu, Z.; Gong, P.  
Deposited on : 2017-06-20  
Resolution : 2.04 Å(reported)

This is a Full wwPDB X-ray Structure Validation Report for a publicly released PDB entry.

We welcome your comments at [validation@mail.wwpdb.org](mailto:validation@mail.wwpdb.org)

A user guide is available at

<https://www.wwpdb.org/validation/2017/XrayValidationReportHelp>

with specific help available everywhere you see the ⓘ symbol.

---

The following versions of software and data (see [references ⓘ](#)) were used in the production of this report:

MolProbity : 4.02b-467  
Mogul : 1.8.5 (274361), CSD as541be (2020)  
Xtriage (Phenix) : 1.13  
EDS : 2.11  
buster-report : 1.1.7 (2018)  
Percentile statistics : 20191225.v01 (using entries in the PDB archive December 25th 2019)  
Refmac : 5.8.0158  
CCP4 : 7.0.044 (Gargrove)  
Ideal geometry (proteins) : Engh & Huber (2001)  
Ideal geometry (DNA, RNA) : Parkinson et al. (1996)  
Validation Pipeline (wwPDB-VP) : 2.11

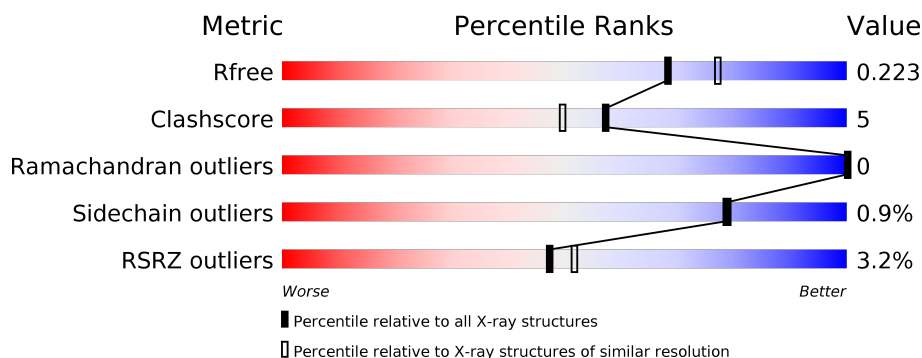
# 1 Overall quality at a glance

The following experimental techniques were used to determine the structure:

*X-RAY DIFFRACTION*

The reported resolution of this entry is 2.04 Å.

Percentile scores (ranging between 0-100) for global validation metrics of the entry are shown in the following graphic. The table shows the number of entries on which the scores are based.



Metric	Whole archive (#Entries)	Similar resolution (#Entries, resolution range(Å))
$R_{free}$	130704	1692 (2.04-2.04)
Clashscore	141614	1773 (2.04-2.04)
Ramachandran outliers	138981	1752 (2.04-2.04)
Sidechain outliers	138945	1752 (2.04-2.04)
RSRZ outliers	127900	1672 (2.04-2.04)

The table below summarises the geometric issues observed across the polymeric chains and their fit to the electron density. The red, orange, yellow and green segments on the lower bar indicate the fraction of residues that contain outliers for  $\geq 3$ , 2, 1 and 0 types of geometric quality criteria respectively. A grey segment represents the fraction of residues that are not modelled. The numeric value for each fraction is indicated below the corresponding segment, with a dot representing fractions  $\leq 5\%$ . The upper red bar (where present) indicates the fraction of residues that have poor fit to the electron density. The numeric value is given above the bar.

Mol	Chain	Length	Quality of chain
1	A	293	<div> <div>3%</div> <div>78% 6% 15%</div> </div>
1	B	293	<div> <div>2%</div> <div>80% 6% 13%</div> </div>
1	C	293	<div> <div>3%</div> <div>74% 9% 17%</div> </div>
1	D	293	<div> <div>2%</div> <div>76% 10% 13%</div> </div>

The following table lists non-polymeric compounds, carbohydrate monomers and non-standard residues in protein, DNA, RNA chains that are outliers for geometric or electron-density-fit crite-

ria:

Mol	Type	Chain	Res	Chirality	Geometry	Clashes	Electron density
3	GOL	A	302	-	-	X	-
3	GOL	D	303	-	-	X	-

## 2 Entry composition

There are 4 unique types of molecules in this entry. The entry contains 8638 atoms, of which 0 are hydrogens and 0 are deuteriums.

In the tables below, the ZeroOcc column contains the number of atoms modelled with zero occupancy, the AltConf column contains the number of residues with at least one atom in alternate conformation and the Trace column contains the number of residues modelled with at most 2 atoms.

- Molecule 1 is a protein called FAD-linked sulfhydryl oxidase.

Mol	Chain	Residues	Atoms					ZeroOcc	AltConf	Trace
1	A	248	Total	C	N	O	S	0	0	0
			2004	1302	320	365	17			
1	B	254	Total	C	N	O	S	0	0	0
			2056	1334	326	378	18			
1	C	242	Total	C	N	O	S	0	0	0
			1972	1280	315	360	17			
1	D	255	Total	C	N	O	S	0	0	0
			2051	1333	328	372	18			

There are 140 discrepancies between the modelled and reference sequences:

Chain	Residue	Modelled	Actual	Comment	Reference
A	-33	MET	-	initiating methionine	UNP P41480
A	-32	GLY	-	expression tag	UNP P41480
A	-31	SER	-	expression tag	UNP P41480
A	-30	SER	-	expression tag	UNP P41480
A	-29	HIS	-	expression tag	UNP P41480
A	-28	HIS	-	expression tag	UNP P41480
A	-27	HIS	-	expression tag	UNP P41480
A	-26	HIS	-	expression tag	UNP P41480
A	-25	HIS	-	expression tag	UNP P41480
A	-24	HIS	-	expression tag	UNP P41480
A	-23	SER	-	expression tag	UNP P41480
A	-22	SER	-	expression tag	UNP P41480
A	-21	GLY	-	expression tag	UNP P41480
A	-20	LEU	-	expression tag	UNP P41480
A	-19	VAL	-	expression tag	UNP P41480
A	-18	PRO	-	expression tag	UNP P41480
A	-17	ARG	-	expression tag	UNP P41480
A	-16	GLY	-	expression tag	UNP P41480
A	-15	SER	-	expression tag	UNP P41480
A	-14	HIS	-	expression tag	UNP P41480
A	-13	MET	-	expression tag	UNP P41480

*Continued on next page...*

*Continued from previous page...*

Chain	Residue	Modelled	Actual	Comment	Reference
A	-12	ALA	-	expression tag	UNP P41480
A	-11	SER	-	expression tag	UNP P41480
A	-10	MET	-	expression tag	UNP P41480
A	-9	THR	-	expression tag	UNP P41480
A	-8	GLY	-	expression tag	UNP P41480
A	-7	GLY	-	expression tag	UNP P41480
A	-6	GLN	-	expression tag	UNP P41480
A	-5	GLN	-	expression tag	UNP P41480
A	-4	MET	-	expression tag	UNP P41480
A	-3	GLY	-	expression tag	UNP P41480
A	-2	ARG	-	expression tag	UNP P41480
A	-1	GLY	-	expression tag	UNP P41480
A	0	SER	-	expression tag	UNP P41480
A	227	ASP	HIS	engineered mutation	UNP P41480
B	-33	MET	-	initiating methionine	UNP P41480
B	-32	GLY	-	expression tag	UNP P41480
B	-31	SER	-	expression tag	UNP P41480
B	-30	SER	-	expression tag	UNP P41480
B	-29	HIS	-	expression tag	UNP P41480
B	-28	HIS	-	expression tag	UNP P41480
B	-27	HIS	-	expression tag	UNP P41480
B	-26	HIS	-	expression tag	UNP P41480
B	-25	HIS	-	expression tag	UNP P41480
B	-24	HIS	-	expression tag	UNP P41480
B	-23	SER	-	expression tag	UNP P41480
B	-22	SER	-	expression tag	UNP P41480
B	-21	GLY	-	expression tag	UNP P41480
B	-20	LEU	-	expression tag	UNP P41480
B	-19	VAL	-	expression tag	UNP P41480
B	-18	PRO	-	expression tag	UNP P41480
B	-17	ARG	-	expression tag	UNP P41480
B	-16	GLY	-	expression tag	UNP P41480
B	-15	SER	-	expression tag	UNP P41480
B	-14	HIS	-	expression tag	UNP P41480
B	-13	MET	-	expression tag	UNP P41480
B	-12	ALA	-	expression tag	UNP P41480
B	-11	SER	-	expression tag	UNP P41480
B	-10	MET	-	expression tag	UNP P41480
B	-9	THR	-	expression tag	UNP P41480
B	-8	GLY	-	expression tag	UNP P41480
B	-7	GLY	-	expression tag	UNP P41480
B	-6	GLN	-	expression tag	UNP P41480

*Continued on next page...*

*Continued from previous page...*

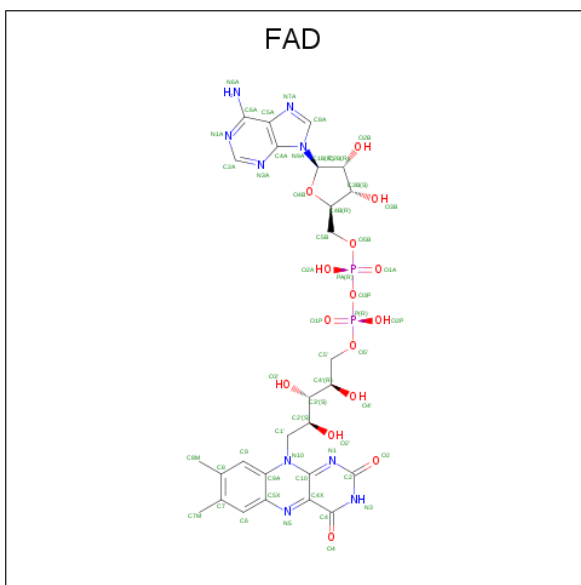
Chain	Residue	Modelled	Actual	Comment	Reference
B	-5	GLN	-	expression tag	UNP P41480
B	-4	MET	-	expression tag	UNP P41480
B	-3	GLY	-	expression tag	UNP P41480
B	-2	ARG	-	expression tag	UNP P41480
B	-1	GLY	-	expression tag	UNP P41480
B	0	SER	-	expression tag	UNP P41480
B	227	ASP	HIS	engineered mutation	UNP P41480
C	-33	MET	-	initiating methionine	UNP P41480
C	-32	GLY	-	expression tag	UNP P41480
C	-31	SER	-	expression tag	UNP P41480
C	-30	SER	-	expression tag	UNP P41480
C	-29	HIS	-	expression tag	UNP P41480
C	-28	HIS	-	expression tag	UNP P41480
C	-27	HIS	-	expression tag	UNP P41480
C	-26	HIS	-	expression tag	UNP P41480
C	-25	HIS	-	expression tag	UNP P41480
C	-24	HIS	-	expression tag	UNP P41480
C	-23	SER	-	expression tag	UNP P41480
C	-22	SER	-	expression tag	UNP P41480
C	-21	GLY	-	expression tag	UNP P41480
C	-20	LEU	-	expression tag	UNP P41480
C	-19	VAL	-	expression tag	UNP P41480
C	-18	PRO	-	expression tag	UNP P41480
C	-17	ARG	-	expression tag	UNP P41480
C	-16	GLY	-	expression tag	UNP P41480
C	-15	SER	-	expression tag	UNP P41480
C	-14	HIS	-	expression tag	UNP P41480
C	-13	MET	-	expression tag	UNP P41480
C	-12	ALA	-	expression tag	UNP P41480
C	-11	SER	-	expression tag	UNP P41480
C	-10	MET	-	expression tag	UNP P41480
C	-9	THR	-	expression tag	UNP P41480
C	-8	GLY	-	expression tag	UNP P41480
C	-7	GLY	-	expression tag	UNP P41480
C	-6	GLN	-	expression tag	UNP P41480
C	-5	GLN	-	expression tag	UNP P41480
C	-4	MET	-	expression tag	UNP P41480
C	-3	GLY	-	expression tag	UNP P41480
C	-2	ARG	-	expression tag	UNP P41480
C	-1	GLY	-	expression tag	UNP P41480
C	0	SER	-	expression tag	UNP P41480
C	227	ASP	HIS	engineered mutation	UNP P41480

*Continued on next page...*

*Continued from previous page...*

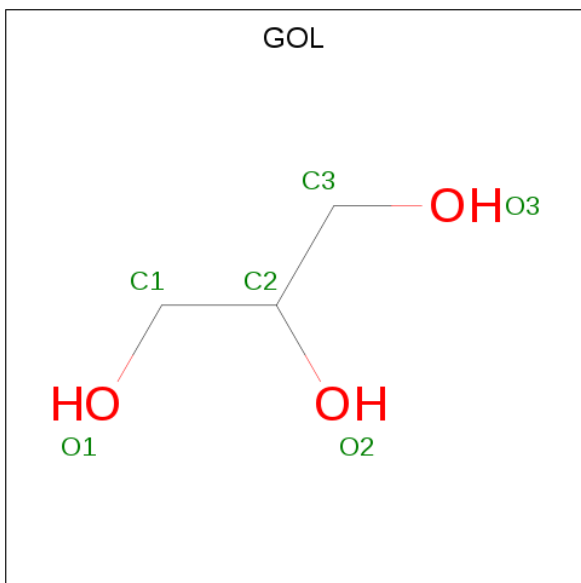
Chain	Residue	Modelled	Actual	Comment	Reference
D	-33	MET	-	initiating methionine	UNP P41480
D	-32	GLY	-	expression tag	UNP P41480
D	-31	SER	-	expression tag	UNP P41480
D	-30	SER	-	expression tag	UNP P41480
D	-29	HIS	-	expression tag	UNP P41480
D	-28	HIS	-	expression tag	UNP P41480
D	-27	HIS	-	expression tag	UNP P41480
D	-26	HIS	-	expression tag	UNP P41480
D	-25	HIS	-	expression tag	UNP P41480
D	-24	HIS	-	expression tag	UNP P41480
D	-23	SER	-	expression tag	UNP P41480
D	-22	SER	-	expression tag	UNP P41480
D	-21	GLY	-	expression tag	UNP P41480
D	-20	LEU	-	expression tag	UNP P41480
D	-19	VAL	-	expression tag	UNP P41480
D	-18	PRO	-	expression tag	UNP P41480
D	-17	ARG	-	expression tag	UNP P41480
D	-16	GLY	-	expression tag	UNP P41480
D	-15	SER	-	expression tag	UNP P41480
D	-14	HIS	-	expression tag	UNP P41480
D	-13	MET	-	expression tag	UNP P41480
D	-12	ALA	-	expression tag	UNP P41480
D	-11	SER	-	expression tag	UNP P41480
D	-10	MET	-	expression tag	UNP P41480
D	-9	THR	-	expression tag	UNP P41480
D	-8	GLY	-	expression tag	UNP P41480
D	-7	GLY	-	expression tag	UNP P41480
D	-6	GLN	-	expression tag	UNP P41480
D	-5	GLN	-	expression tag	UNP P41480
D	-4	MET	-	expression tag	UNP P41480
D	-3	GLY	-	expression tag	UNP P41480
D	-2	ARG	-	expression tag	UNP P41480
D	-1	GLY	-	expression tag	UNP P41480
D	0	SER	-	expression tag	UNP P41480
D	227	ASP	HIS	engineered mutation	UNP P41480

- Molecule 2 is FLAVIN-ADENINE DINUCLEOTIDE (three-letter code: FAD) (formula: C<sub>27</sub>H<sub>33</sub>N<sub>9</sub>O<sub>15</sub>P<sub>2</sub>).



Mol	Chain	Residues	Atoms					ZeroOcc	AltConf
2	A	1	Total 53	C 27	N 9	O 15	P 2	0	0
2	B	1	Total 53	C 27	N 9	O 15	P 2	0	0
2	C	1	Total 53	C 27	N 9	O 15	P 2	0	0
2	D	1	Total 53	C 27	N 9	O 15	P 2	0	0

- Molecule 3 is GLYCEROL (three-letter code: GOL) (formula:  $\text{C}_3\text{H}_8\text{O}_3$ ).





Mol	Chain	Residues	Atoms	ZeroOcc	AltConf
3	A	1	Total C O 6 3 3	0	0
3	C	1	Total C O 6 3 3	0	0
3	D	1	Total C O 6 3 3	0	0
3	D	1	Total C O 6 3 3	0	0

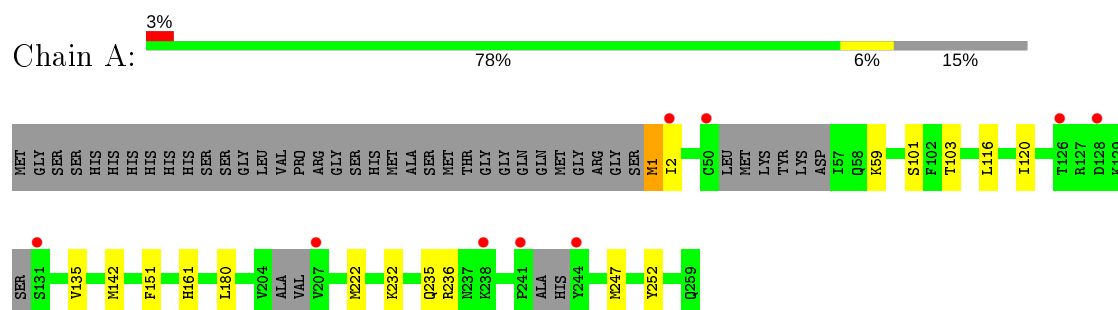
- Molecule 4 is water.

Mol	Chain	Residues	Atoms	ZeroOcc	AltConf
4	A	77	Total O 77 77	0	0
4	B	93	Total O 93 93	0	0
4	C	66	Total O 66 66	0	0
4	D	83	Total O 83 83	0	0

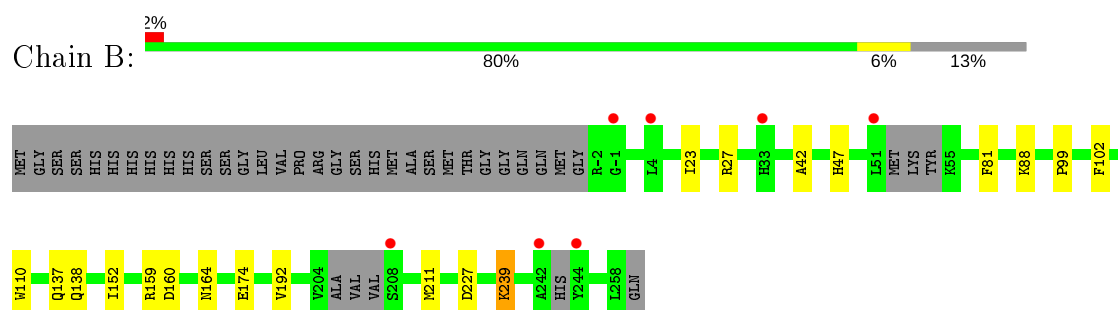
### 3 Residue-property plots [i](#)

These plots are drawn for all protein, RNA and DNA chains in the entry. The first graphic for a chain summarises the proportions of the various outlier classes displayed in the second graphic. The second graphic shows the sequence view annotated by issues in geometry and electron density. Residues are color-coded according to the number of geometric quality criteria for which they contain at least one outlier: green = 0, yellow = 1, orange = 2 and red = 3 or more. A red dot above a residue indicates a poor fit to the electron density ( $RSRZ > 2$ ). Stretches of 2 or more consecutive residues without any outlier are shown as a green connector. Residues present in the sample, but not in the model, are shown in grey.

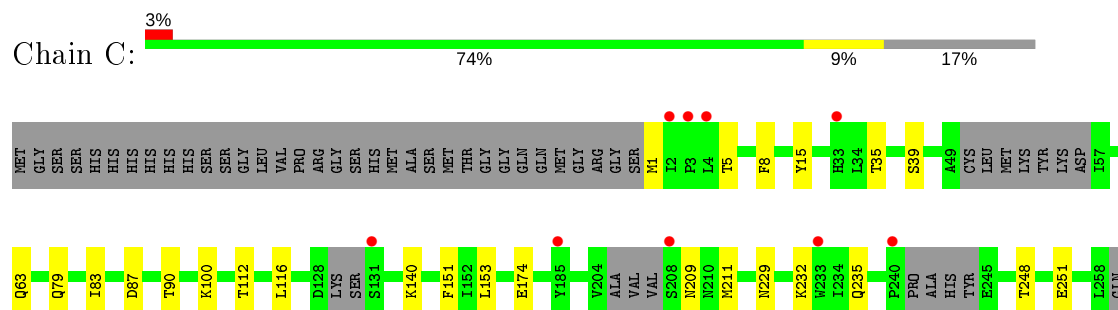
- Molecule 1: FAD-linked sulfhydryl oxidase



- Molecule 1: FAD-linked sulfhydryl oxidase

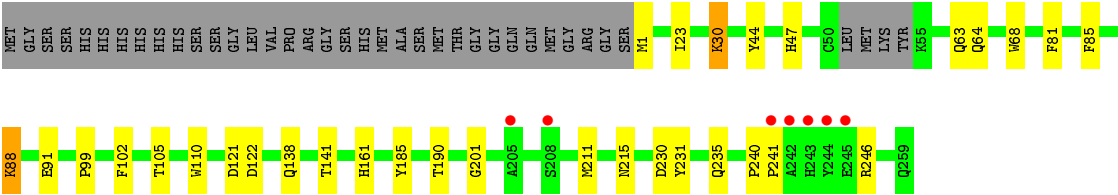


- Molecule 1: FAD-linked sulfhydryl oxidase



- Molecule 1: FAD-linked sulfhydryl oxidase





## 4 Data and refinement statistics

Property	Value	Source
Space group	P 1	Depositor
Cell constants a, b, c, $\alpha$ , $\beta$ , $\gamma$	59.10Å 76.04Å 80.63Å 84.61° 71.27° 69.00°	Depositor
Resolution (Å)	27.57 – 2.04 27.57 – 2.04	Depositor EDS
% Data completeness (in resolution range)	78.5 (27.57-2.04) 78.6 (27.57-2.04)	Depositor EDS
$R_{merge}$	0.04	Depositor
$R_{sym}$	(Not available)	Depositor
$\langle I/\sigma(I) \rangle$ <sup>1</sup>	4.48 (at 2.04Å)	Xtriage
Refinement program	PHENIX 1.11.1_2575	Depositor
R, $R_{free}$	0.186 , 0.223 0.186 , 0.223	Depositor DCC
$R_{free}$ test set	3008 reflections (4.87%)	wwPDB-VP
Wilson B-factor (Å <sup>2</sup> )	26.4	Xtriage
Anisotropy	0.086	Xtriage
Bulk solvent $k_{sol}$ (e/Å <sup>3</sup> ), $B_{sol}$ (Å <sup>2</sup> )	0.38 , 53.9	EDS
L-test for twinning <sup>2</sup>	$\langle  L  \rangle = 0.50$ , $\langle L^2 \rangle = 0.33$	Xtriage
Estimated twinning fraction	0.011 for -h,-h+k,-l	Xtriage
$F_o, F_c$ correlation	0.95	EDS
Total number of atoms	8638	wwPDB-VP
Average B, all atoms (Å <sup>2</sup> )	28.0	wwPDB-VP

Xtriage's analysis on translational NCS is as follows: *The largest off-origin peak in the Patterson function is 6.01% of the height of the origin peak. No significant pseudotranslation is detected.*

<sup>1</sup>Intensities estimated from amplitudes.

<sup>2</sup>Theoretical values of  $\langle |L| \rangle$ ,  $\langle L^2 \rangle$  for acentric reflections are 0.5, 0.333 respectively for untwinned datasets, and 0.375, 0.2 for perfectly twinned datasets.

## 5 Model quality [i](#)

### 5.1 Standard geometry [i](#)

Bond lengths and bond angles in the following residue types are not validated in this section: GOL, FAD

The Z score for a bond length (or angle) is the number of standard deviations the observed value is removed from the expected value. A bond length (or angle) with  $|Z| > 5$  is considered an outlier worth inspection. RMSZ is the root-mean-square of all Z scores of the bond lengths (or angles).

Mol	Chain	Bond lengths		Bond angles	
		RMSZ	$\# Z  > 5$	RMSZ	$\# Z  > 5$
1	A	0.37	0/2049	0.52	0/2772
1	B	0.41	0/2103	0.53	0/2847
1	C	0.38	0/2016	0.51	0/2728
1	D	0.39	0/2099	0.51	0/2844
All	All	0.39	0/8267	0.52	0/11191

There are no bond length outliers.

There are no bond angle outliers.

There are no chirality outliers.

There are no planarity outliers.

### 5.2 Too-close contacts [i](#)

In the following table, the Non-H and H(model) columns list the number of non-hydrogen atoms and hydrogen atoms in the chain respectively. The H(added) column lists the number of hydrogen atoms added and optimized by MolProbity. The Clashes column lists the number of clashes within the asymmetric unit, whereas Symm-Clashes lists symmetry related clashes.

Mol	Chain	Non-H	H(model)	H(added)	Clashes	Symm-Clashes
1	A	2004	0	1917	22	0
1	B	2056	0	1972	15	0
1	C	1972	0	1895	16	0
1	D	2051	0	1978	29	0
2	A	53	0	30	2	0
2	B	53	0	30	2	0
2	C	53	0	30	1	0
2	D	53	0	30	2	0
3	A	6	0	8	4	0

*Continued on next page...*

*Continued from previous page...*

Mol	Chain	Non-H	H(model)	H(added)	Clashes	Symm-Clashes
3	C	6	0	8	1	0
3	D	12	0	16	5	0
4	A	77	0	0	0	0
4	B	93	0	0	2	0
4	C	66	0	0	2	0
4	D	83	0	0	3	0
All	All	8638	0	7914	80	0

The all-atom clashscore is defined as the number of clashes found per 1000 atoms (including hydrogen atoms). The all-atom clashscore for this structure is 5.

All (80) close contacts within the same asymmetric unit are listed below, sorted by their clash magnitude.

Atom-1	Atom-2	Interatomic distance (Å)	Clash overlap (Å)
1:D:215:ASN:H	3:D:303:GOL:H32	1.16	1.05
1:A:151:PHE:H	3:A:302:GOL:H12	1.21	1.05
1:A:222:MET:CE	1:A:247:MET:HG3	1.89	1.01
1:A:222:MET:HE2	1:A:247:MET:HG3	1.53	0.90
1:C:5:THR:HG23	1:C:8:PHE:H	1.43	0.81
1:A:222:MET:HE3	1:A:252:TYR:HB2	1.66	0.77
1:D:63:GLN:NE2	1:D:64:GLN:OE1	2.16	0.77
1:D:47:HIS:NE2	1:D:138:GLN:OE1	2.17	0.76
1:A:222:MET:HE2	1:A:247:MET:CG	2.16	0.75
1:D:215:ASN:N	3:D:303:GOL:H32	1.98	0.75
1:D:230:ASP:OD2	1:D:246:ARG:NH1	2.20	0.75
1:A:151:PHE:N	3:A:302:GOL:H12	1.99	0.74
1:A:1:MET:SD	1:A:2:ILE:N	2.56	0.71
1:D:121:ASP:HB3	3:D:303:GOL:H31	1.75	0.68
3:A:302:GOL:HO1	3:A:302:GOL:HO3	1.38	0.67
1:D:215:ASN:H	3:D:303:GOL:C3	2.02	0.65
1:A:222:MET:HE3	1:A:247:MET:HG3	1.77	0.63
1:C:15:TYR:HE1	1:C:116:LEU:HD11	1.64	0.63
1:A:116:LEU:HB3	1:A:142:MET:HE3	1.81	0.61
1:D:201:GLY:HA3	1:D:211:MET:HE2	1.83	0.59
1:D:121:ASP:HA	3:D:303:GOL:H2	1.85	0.59
1:C:248:THR:HG23	1:C:251:GLU:H	1.68	0.58
1:A:116:LEU:HB3	1:A:142:MET:CE	2.32	0.58
1:B:47:HIS:CE1	1:B:138:GLN:HE22	2.24	0.56
1:D:99:PRO:HG2	1:D:102:PHE:CZ	2.40	0.55
1:A:235:GLN:OE1	2:A:301:FAD:N3	2.40	0.55
1:A:232:LYS:HD2	1:A:236:ARG:NH2	2.22	0.54

*Continued on next page...*

*Continued from previous page...*

Atom-1	Atom-2	Interatomic distance (Å)	Clash overlap (Å)
1:B:159:ARG:NH1	1:B:160:ASP:OD1	2.42	0.53
1:D:30:LYS:H	1:D:30:LYS:HD2	1.73	0.53
1:A:120:ILE:HD11	1:A:142:MET:HE2	1.89	0.53
1:B:164:ASN:ND2	4:B:402:HOH:O	2.34	0.53
1:B:99:PRO:HG2	1:B:102:PHE:CZ	2.44	0.52
1:B:174:GLU:CD	1:D:161:HIS:HE2	2.12	0.52
1:C:211:MET:HE1	4:C:436:HOH:O	2.10	0.51
1:D:235:GLN:OE1	2:D:301:FAD:N3	2.40	0.51
1:C:229:ASN:O	1:C:232:LYS:HG2	2.10	0.51
1:B:227:ASP:HB2	4:D:420:HOH:O	2.11	0.50
1:A:101:SER:OG	1:A:103:THR:HG22	2.12	0.49
1:D:44:TYR:CG	1:D:141:THR:HG23	2.48	0.49
1:C:112:THR:O	1:C:116:LEU:HD13	2.14	0.48
1:C:87:ASP:O	1:C:90:THR:OG1	2.29	0.47
1:D:91:GLU:OE2	4:D:401:HOH:O	2.20	0.47
1:B:239:LYS:HG3	1:D:185:TYR:CE1	2.50	0.47
1:A:222:MET:CE	1:A:247:MET:CG	2.75	0.46
1:D:68:TRP:CE2	1:D:88:LYS:HG3	2.51	0.46
1:C:140:LYS:NZ	3:C:302:GOL:O1	2.42	0.46
1:D:1:MET:HG3	1:D:122:ASP:OD2	2.16	0.46
1:D:201:GLY:HA3	1:D:211:MET:CE	2.46	0.46
1:C:15:TYR:HE1	1:C:116:LEU:CD1	2.28	0.46
1:C:248:THR:HG22	1:C:251:GLU:OE1	2.16	0.45
1:D:23:ILE:HD11	1:D:85:PHE:CD2	2.51	0.45
1:A:135:VAL:HG13	1:A:180:LEU:HD13	1.99	0.45
1:B:174:GLU:OE2	1:D:161:HIS:NE2	2.49	0.44
1:B:88:LYS:HA	1:B:88:LYS:HD3	1.85	0.44
1:D:105:THR:HB	4:D:448:HOH:O	2.17	0.44
1:A:161:HIS:HE2	1:C:174:GLU:CD	2.21	0.43
1:C:63:GLN:NE2	4:C:403:HOH:O	2.39	0.43
1:D:1:MET:HA	1:D:122:ASP:OD1	2.19	0.43
1:C:235:GLN:OE1	2:C:301:FAD:N3	2.51	0.43
1:A:120:ILE:HG12	1:A:142:MET:HG3	2.01	0.43
1:A:120:ILE:HD11	1:A:142:MET:CE	2.48	0.43
1:C:79:GLN:O	1:C:83:ILE:HG12	2.18	0.43
1:D:23:ILE:HD12	1:D:81:PHE:HZ	1.83	0.43
1:A:151:PHE:HB2	3:A:302:GOL:H12	2.00	0.43
1:B:23:ILE:HD11	1:B:42:ALA:HB1	2.01	0.43
1:B:192:VAL:HG11	1:B:211:MET:CE	2.49	0.43
1:D:110:TRP:CD2	2:D:301:FAD:HM82	2.54	0.43
1:B:174:GLU:HG2	1:D:231:TYR:CE1	2.54	0.42

*Continued on next page...*

*Continued from previous page...*

Atom-1	Atom-2	Interatomic distance (Å)	Clash overlap (Å)
1:C:151:PHE:O	1:C:153:LEU:N	2.53	0.41
1:A:142:MET:HE2	1:A:142:MET:HB3	1.86	0.41
1:B:27:ARG:HD3	1:B:81:PHE:CD1	2.56	0.41
1:A:59:LYS:N	1:A:59:LYS:HD2	2.36	0.41
1:C:35:THR:O	1:C:39:SER:OG	2.29	0.41
1:B:152:ILE:HD13	4:B:444:HOH:O	2.20	0.41
1:B:110:TRP:CD2	2:B:301:FAD:HM82	2.57	0.40
2:B:301:FAD:H8A	2:B:301:FAD:H2B	1.90	0.40
1:D:240:PRO:HA	1:D:241:PRO:HD3	1.93	0.40
1:D:190:THR:O	1:D:211:MET:HA	2.21	0.40
2:A:301:FAD:H8A	2:A:301:FAD:H2B	1.65	0.40
1:D:99:PRO:HG2	1:D:102:PHE:CE2	2.57	0.40

There are no symmetry-related clashes.

## 5.3 Torsion angles [i](#)

### 5.3.1 Protein backbone [i](#)

In the following table, the Percentiles column shows the percent Ramachandran outliers of the chain as a percentile score with respect to all X-ray entries followed by that with respect to entries of similar resolution.

The Analysed column shows the number of residues for which the backbone conformation was analysed, and the total number of residues.

Mol	Chain	Analysed	Favoured	Allowed	Outliers	Percentiles	
1	A	238/293 (81%)	233 (98%)	5 (2%)	0	100	100
1	B	246/293 (84%)	241 (98%)	5 (2%)	0	100	100
1	C	232/293 (79%)	228 (98%)	4 (2%)	0	100	100
1	D	251/293 (86%)	245 (98%)	6 (2%)	0	100	100
All	All	967/1172 (82%)	947 (98%)	20 (2%)	0	100	100

There are no Ramachandran outliers to report.

### 5.3.2 Protein sidechains [i](#)

In the following table, the Percentiles column shows the percent sidechain outliers of the chain as a percentile score with respect to all X-ray entries followed by that with respect to entries of similar



resolution.

The Analysed column shows the number of residues for which the sidechain conformation was analysed, and the total number of residues.

Mol	Chain	Analysed	Rotameric	Outliers	Percentiles	
1	A	213/269 (79%)	212 (100%)	1 (0%)	88	89
1	B	221/269 (82%)	219 (99%)	2 (1%)	78	79
1	C	213/269 (79%)	210 (99%)	3 (1%)	67	65
1	D	218/269 (81%)	216 (99%)	2 (1%)	78	79
All	All	865/1076 (80%)	857 (99%)	8 (1%)	78	79

All (8) residues with a non-rotameric sidechain are listed below:

Mol	Chain	Res	Type
1	A	1	MET
1	B	137	GLN
1	B	239	LYS
1	C	1	MET
1	C	100	LYS
1	C	209	ASN
1	D	30	LYS
1	D	88	LYS

Some sidechains can be flipped to improve hydrogen bonding and reduce clashes. All (9) such sidechains are listed below:

Mol	Chain	Res	Type
1	A	138	GLN
1	B	47	HIS
1	B	64	GLN
1	C	93	ASN
1	C	154	GLN
1	C	197	GLN
1	C	209	ASN
1	C	215	ASN
1	D	197	GLN

### 5.3.3 RNA ⓘ

There are no RNA molecules in this entry.

## 5.4 Non-standard residues in protein, DNA, RNA chains [i](#)

There are no non-standard protein/DNA/RNA residues in this entry.

## 5.5 Carbohydrates [i](#)

There are no carbohydrates in this entry.

## 5.6 Ligand geometry [i](#)

8 ligands are modelled in this entry.

In the following table, the Counts columns list the number of bonds (or angles) for which Mogul statistics could be retrieved, the number of bonds (or angles) that are observed in the model and the number of bonds (or angles) that are defined in the Chemical Component Dictionary. The Link column lists molecule types, if any, to which the group is linked. The Z score for a bond length (or angle) is the number of standard deviations the observed value is removed from the expected value. A bond length (or angle) with  $|Z| > 2$  is considered an outlier worth inspection. RMSZ is the root-mean-square of all Z scores of the bond lengths (or angles).

Mol	Type	Chain	Res	Link	Bond lengths			Bond angles		
					Counts	RMSZ	$\# Z  > 2$	Counts	RMSZ	$\# Z  > 2$
3	GOL	A	302	-	5,5,5	0.31	0	5,5,5	0.97	0
2	FAD	B	301	-	51,58,58	4.54	21 (41%)	60,89,89	2.14	17 (28%)
3	GOL	C	302	-	5,5,5	0.39	0	5,5,5	0.46	0
2	FAD	D	301	-	51,58,58	4.65	23 (45%)	60,89,89	2.04	15 (25%)
2	FAD	C	301	-	51,58,58	4.67	23 (45%)	60,89,89	2.18	14 (23%)
2	FAD	A	301	-	51,58,58	4.67	22 (43%)	60,89,89	1.98	12 (20%)
3	GOL	D	302	-	5,5,5	0.34	0	5,5,5	0.53	0
3	GOL	D	303	-	5,5,5	0.51	0	5,5,5	0.46	0

In the following table, the Chirals column lists the number of chiral outliers, the number of chiral centers analysed, the number of these observed in the model and the number defined in the Chemical Component Dictionary. Similar counts are reported in the Torsion and Rings columns. '-' means no outliers of that kind were identified.

Mol	Type	Chain	Res	Link	Chirals	Torsions	Rings
3	GOL	A	302	-	-	2/4/4/4	-
2	FAD	B	301	-	-	5/30/50/50	0/6/6/6
3	GOL	C	302	-	-	4/4/4/4	-
2	FAD	D	301	-	-	8/30/50/50	0/6/6/6
2	FAD	C	301	-	-	3/30/50/50	0/6/6/6

*Continued on next page...*

*Continued from previous page...*

Mol	Type	Chain	Res	Link	Chirals	Torsions	Rings
2	FAD	A	301	-	-	2/30/50/50	0/6/6/6
3	GOL	D	302	-	-	4/4/4/4	-
3	GOL	D	303	-	-	3/4/4/4	-

All (89) bond length outliers are listed below:

Mol	Chain	Res	Type	Atoms	Z	Observed(Å)	Ideal(Å)
2	A	301	FAD	C2B-C1B	-15.56	1.30	1.53
2	C	301	FAD	C2B-C1B	-15.33	1.30	1.53
2	B	301	FAD	C2B-C1B	-14.93	1.31	1.53
2	D	301	FAD	C2B-C1B	-14.89	1.31	1.53
2	A	301	FAD	O4B-C1B	14.10	1.60	1.41
2	C	301	FAD	O4B-C1B	14.07	1.60	1.41
2	D	301	FAD	O4B-C1B	13.72	1.60	1.41
2	B	301	FAD	O4B-C1B	13.01	1.59	1.41
2	D	301	FAD	C10-N1	10.88	1.47	1.33
2	B	301	FAD	C10-N1	10.69	1.47	1.33
2	A	301	FAD	C10-N1	10.55	1.46	1.33
2	C	301	FAD	C10-N1	10.21	1.46	1.33
2	D	301	FAD	C4X-N5	9.30	1.46	1.33
2	B	301	FAD	C9A-N10	9.12	1.50	1.38
2	C	301	FAD	C4X-N5	9.10	1.46	1.33
2	D	301	FAD	C9A-N10	8.81	1.50	1.38
2	C	301	FAD	C5X-N5	8.67	1.49	1.35
2	A	301	FAD	C5X-N5	8.51	1.49	1.35
2	A	301	FAD	C4X-N5	8.50	1.45	1.33
2	C	301	FAD	C9A-N10	8.44	1.49	1.38
2	D	301	FAD	C5X-N5	8.28	1.49	1.35
2	B	301	FAD	C5X-N5	8.24	1.49	1.35
2	C	301	FAD	C4-N3	8.24	1.47	1.33
2	A	301	FAD	C9A-N10	8.22	1.49	1.38
2	B	301	FAD	C4X-N5	8.20	1.45	1.33
2	D	301	FAD	C4-N3	8.04	1.47	1.33
2	A	301	FAD	C4-N3	7.77	1.46	1.33
2	B	301	FAD	C4-N3	7.38	1.45	1.33
2	C	301	FAD	C4-C4X	6.48	1.52	1.41
2	A	301	FAD	C2-N3	6.38	1.50	1.38
2	D	301	FAD	C4-C4X	6.23	1.52	1.41
2	C	301	FAD	C2-N3	6.17	1.50	1.38
2	A	301	FAD	C4-C4X	6.10	1.51	1.41
2	B	301	FAD	C4X-C10	6.00	1.44	1.38
2	C	301	FAD	C4X-C10	5.91	1.44	1.38

*Continued on next page...*

*Continued from previous page...*

Mol	Chain	Res	Type	Atoms	Z	Observed(Å)	Ideal(Å)
2	D	301	FAD	C2-N3	5.90	1.49	1.38
2	B	301	FAD	C2-N3	5.79	1.49	1.38
2	D	301	FAD	C2-N1	5.76	1.49	1.38
2	B	301	FAD	C4-C4X	5.74	1.51	1.41
2	D	301	FAD	C4X-C10	5.61	1.44	1.38
2	A	301	FAD	O4B-C4B	-5.57	1.32	1.45
2	C	301	FAD	O4B-C4B	-5.51	1.32	1.45
2	A	301	FAD	C4X-C10	5.50	1.44	1.38
2	D	301	FAD	O4B-C4B	-5.50	1.32	1.45
2	B	301	FAD	O4B-C4B	-5.47	1.32	1.45
2	B	301	FAD	C2-N1	5.45	1.49	1.38
2	A	301	FAD	C2-N1	5.16	1.48	1.38
2	C	301	FAD	C2-N1	4.70	1.47	1.38
2	A	301	FAD	C6A-N6A	3.87	1.48	1.34
2	D	301	FAD	C6A-N6A	3.80	1.47	1.34
2	C	301	FAD	C6A-N6A	3.62	1.47	1.34
2	B	301	FAD	C6A-N6A	3.62	1.47	1.34
2	A	301	FAD	C8M-C8	3.46	1.57	1.51
2	B	301	FAD	O3B-C3B	-3.40	1.35	1.43
2	C	301	FAD	C8M-C8	3.22	1.57	1.51
2	D	301	FAD	O3B-C3B	-3.22	1.35	1.43
2	B	301	FAD	C8M-C8	3.20	1.57	1.51
2	D	301	FAD	C2A-N3A	3.18	1.37	1.32
2	D	301	FAD	C8M-C8	3.16	1.57	1.51
2	A	301	FAD	C2A-N3A	3.16	1.37	1.32
2	A	301	FAD	O3B-C3B	-3.05	1.35	1.43
2	C	301	FAD	O3B-C3B	-3.02	1.35	1.43
2	B	301	FAD	C5A-C4A	-2.92	1.33	1.40
2	C	301	FAD	C2A-N3A	2.92	1.36	1.32
2	B	301	FAD	C2A-N3A	2.90	1.36	1.32
2	C	301	FAD	C5A-C4A	-2.86	1.33	1.40
2	D	301	FAD	C5A-C4A	-2.78	1.33	1.40
2	A	301	FAD	C5A-C4A	-2.71	1.33	1.40
2	A	301	FAD	O2B-C2B	2.65	1.49	1.43
2	A	301	FAD	O4-C4	-2.60	1.18	1.24
2	C	301	FAD	O2B-C2B	2.57	1.49	1.43
2	B	301	FAD	O4-C4	-2.55	1.18	1.24
2	D	301	FAD	O2B-C2B	2.52	1.48	1.43
2	B	301	FAD	O2B-C2B	2.50	1.48	1.43
2	B	301	FAD	C5'-C4'	2.46	1.55	1.51
2	A	301	FAD	C5'-C4'	2.43	1.55	1.51
2	A	301	FAD	P-O5'	2.42	1.69	1.59

*Continued on next page...*

*Continued from previous page...*

Mol	Chain	Res	Type	Atoms	Z	Observed(Å)	Ideal(Å)
2	C	301	FAD	O4-C4	-2.37	1.18	1.24
2	C	301	FAD	O2'-C2'	-2.32	1.38	1.43
2	D	301	FAD	O2'-C2'	-2.23	1.38	1.43
2	C	301	FAD	C5'-C4'	2.20	1.54	1.51
2	C	301	FAD	P-O5'	2.18	1.68	1.59
2	B	301	FAD	P-O5'	2.12	1.67	1.59
2	A	301	FAD	O2'-C2'	-2.11	1.38	1.43
2	D	301	FAD	O4-C4	-2.09	1.19	1.24
2	C	301	FAD	PA-O5B	2.09	1.67	1.59
2	D	301	FAD	C5'-C4'	2.07	1.54	1.51
2	D	301	FAD	P-O5'	2.07	1.67	1.59
2	D	301	FAD	PA-O5B	2.05	1.67	1.59

All (58) bond angle outliers are listed below:

Mol	Chain	Res	Type	Atoms	Z	Observed(°)	Ideal(°)
2	C	301	FAD	C5A-C6A-N6A	6.89	130.82	120.35
2	B	301	FAD	C5A-C6A-N6A	6.43	130.12	120.35
2	B	301	FAD	C4-N3-C2	6.33	120.48	115.14
2	C	301	FAD	C4-N3-C2	6.31	120.47	115.14
2	A	301	FAD	C4-N3-C2	6.01	120.22	115.14
2	C	301	FAD	N3A-C2A-N1A	-5.89	119.48	128.68
2	A	301	FAD	C5A-C6A-N6A	5.77	129.12	120.35
2	A	301	FAD	N3A-C2A-N1A	-5.72	119.73	128.68
2	D	301	FAD	C5A-C6A-N6A	5.68	128.99	120.35
2	D	301	FAD	N3A-C2A-N1A	-5.59	119.94	128.68
2	D	301	FAD	C4-N3-C2	5.49	119.78	115.14
2	B	301	FAD	N3A-C2A-N1A	-5.37	120.28	128.68
2	C	301	FAD	N6A-C6A-N1A	-5.14	107.91	118.57
2	B	301	FAD	N6A-C6A-N1A	-4.72	108.78	118.57
2	D	301	FAD	C4X-N5-C5X	4.66	121.43	116.77
2	A	301	FAD	C4X-N5-C5X	4.26	121.03	116.77
2	D	301	FAD	C7M-C7-C8	4.15	129.23	120.74
2	D	301	FAD	N6A-C6A-N1A	-3.99	110.29	118.57
2	B	301	FAD	C4X-N5-C5X	3.95	120.71	116.77
2	A	301	FAD	C7M-C7-C8	3.92	128.76	120.74
2	C	301	FAD	C1'-N10-C9A	3.89	121.35	118.29
2	B	301	FAD	C7M-C7-C8	3.84	128.61	120.74
2	A	301	FAD	N6A-C6A-N1A	-3.82	110.65	118.57
2	B	301	FAD	C5X-C9A-N10	3.75	120.43	117.72
2	A	301	FAD	C7M-C7-C6	-3.65	111.60	120.34
2	D	301	FAD	C7M-C7-C6	-3.63	111.65	120.34

*Continued on next page...*

*Continued from previous page...*

Mol	Chain	Res	Type	Atoms	Z	Observed(°)	Ideal(°)
2	C	301	FAD	C7M-C7-C6	-3.56	111.83	120.34
2	C	301	FAD	C7M-C7-C8	3.47	127.84	120.74
2	C	301	FAD	C4-C4X-C10	-3.36	117.73	119.95
2	C	301	FAD	P-O3P-PA	-3.32	121.43	132.83
2	B	301	FAD	C7M-C7-C6	-3.28	112.48	120.34
2	C	301	FAD	C4X-N5-C5X	3.19	119.96	116.77
2	C	301	FAD	C4-C4X-N5	3.15	122.19	118.60
2	D	301	FAD	C5X-C9A-N10	3.02	119.90	117.72
2	B	301	FAD	O5'-C5'-C4'	-2.95	101.48	109.36
2	A	301	FAD	C3B-C2B-C1B	2.79	105.17	100.98
2	B	301	FAD	C4X-C10-N10	-2.78	117.44	120.30
2	D	301	FAD	C5B-C4B-C3B	-2.76	104.84	115.18
2	A	301	FAD	P-O3P-PA	-2.62	123.84	132.83
2	B	301	FAD	C4X-C4-N3	-2.56	119.92	123.43
2	A	301	FAD	C4X-C4-N3	-2.56	119.93	123.43
2	C	301	FAD	C4X-C4-N3	-2.51	120.00	123.43
2	D	301	FAD	C6-C5X-N5	2.51	121.82	119.05
2	D	301	FAD	C4X-C10-N10	-2.50	117.73	120.30
2	D	301	FAD	C9A-C5X-N5	-2.44	118.55	122.36
2	B	301	FAD	C5B-C4B-C3B	-2.42	106.11	115.18
2	B	301	FAD	C9A-C5X-N5	-2.40	118.60	122.36
2	B	301	FAD	C1'-N10-C9A	2.30	120.11	118.29
2	C	301	FAD	C5X-C9A-N10	2.24	119.34	117.72
2	A	301	FAD	C5'-C4'-C3'	-2.18	108.00	112.20
2	D	301	FAD	C4X-C4-N3	-2.17	120.46	123.43
2	B	301	FAD	P-O3P-PA	-2.16	125.42	132.83
2	A	301	FAD	C4X-C10-N10	-2.13	118.11	120.30
2	D	301	FAD	P-O3P-PA	-2.10	125.62	132.83
2	C	301	FAD	C5B-C4B-C3B	-2.09	107.35	115.18
2	D	301	FAD	C5'-C4'-C3'	-2.07	108.20	112.20
2	B	301	FAD	C3B-C2B-C1B	2.03	104.03	100.98
2	B	301	FAD	O4B-C4B-C3B	2.00	109.08	105.11

There are no chirality outliers.

All (31) torsion outliers are listed below:

Mol	Chain	Res	Type	Atoms
2	B	301	FAD	C5B-O5B-PA-O3P
3	C	302	GOL	O1-C1-C2-C3
3	C	302	GOL	C1-C2-C3-O3
2	D	301	FAD	C5B-O5B-PA-O3P
2	D	301	FAD	C5'-O5'-P-O1P

*Continued on next page...*

*Continued from previous page...*

Mol	Chain	Res	Type	Atoms
2	D	301	FAD	C5'-O5'-P-O2P
2	C	301	FAD	C5B-O5B-PA-O1A
2	C	301	FAD	O4B-C4B-C5B-O5B
2	C	301	FAD	C3B-C4B-C5B-O5B
3	C	302	GOL	O2-C2-C3-O3
3	A	302	GOL	C1-C2-C3-O3
3	D	302	GOL	C1-C2-C3-O3
3	A	302	GOL	O2-C2-C3-O3
3	C	302	GOL	O1-C1-C2-O2
3	D	302	GOL	O2-C2-C3-O3
3	D	303	GOL	O2-C2-C3-O3
2	B	301	FAD	PA-O3P-P-O5'
2	D	301	FAD	PA-O3P-P-O5'
2	D	301	FAD	C5'-O5'-P-O3P
2	A	301	FAD	C5'-O5'-P-O3P
3	D	302	GOL	O1-C1-C2-O2
3	D	303	GOL	O1-C1-C2-O2
2	B	301	FAD	C5B-O5B-PA-O1A
2	B	301	FAD	C5B-O5B-PA-O2A
2	D	301	FAD	C5B-O5B-PA-O1A
2	D	301	FAD	P-O3P-PA-O2A
2	B	301	FAD	C3B-C4B-C5B-O5B
2	A	301	FAD	P-O3P-PA-O1A
3	D	302	GOL	O1-C1-C2-C3
3	D	303	GOL	C1-C2-C3-O3
2	D	301	FAD	C5B-O5B-PA-O2A

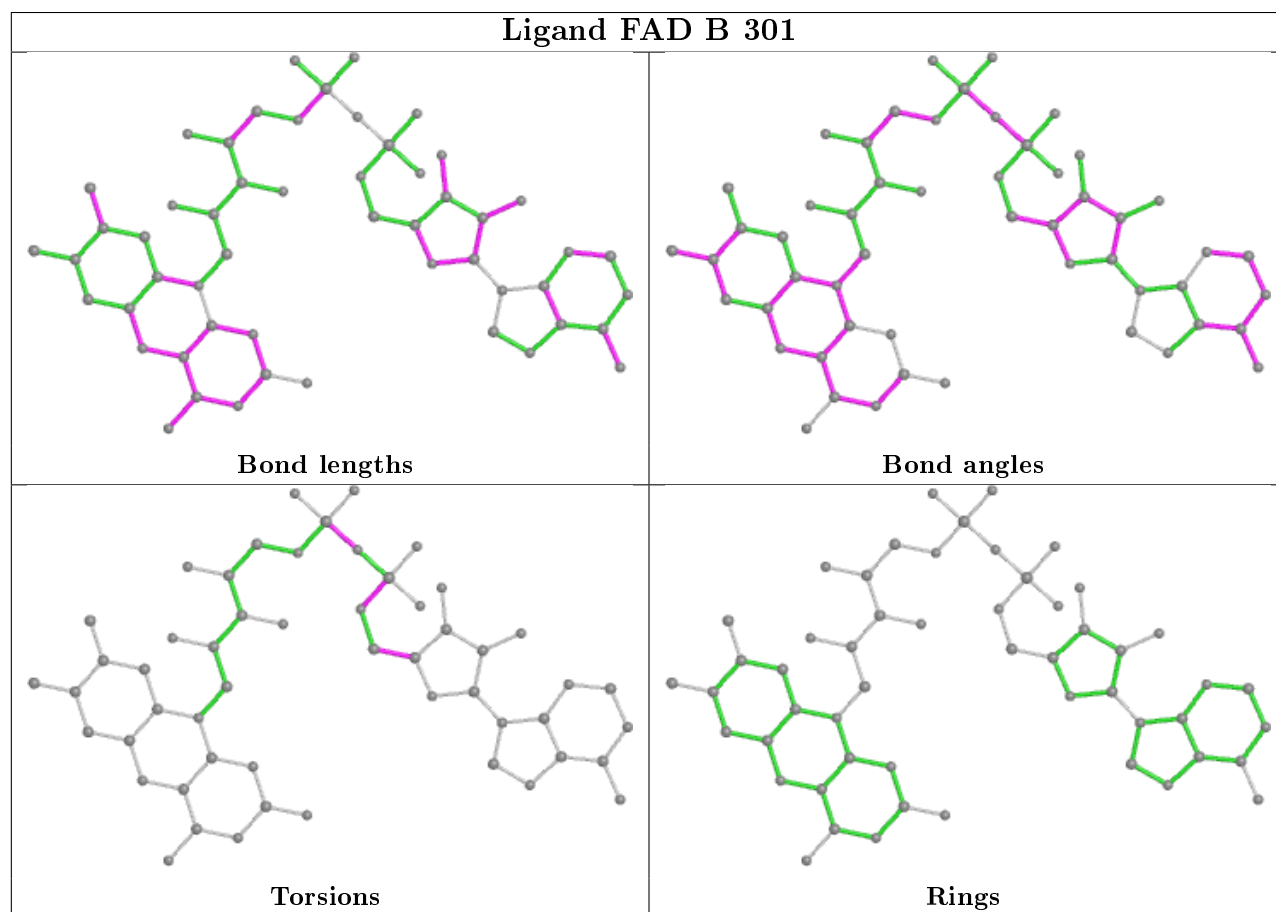
There are no ring outliers.

7 monomers are involved in 17 short contacts:

Mol	Chain	Res	Type	Clashes	Symm-Clashes
3	A	302	GOL	4	0
2	B	301	FAD	2	0
3	C	302	GOL	1	0
2	D	301	FAD	2	0
2	C	301	FAD	1	0
2	A	301	FAD	2	0
3	D	303	GOL	5	0

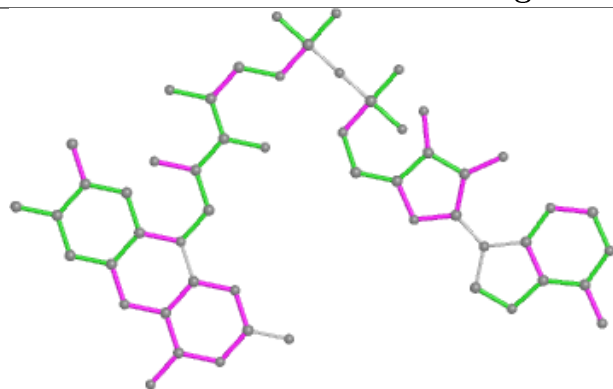
The following is a two-dimensional graphical depiction of Mogul quality analysis of bond lengths, bond angles, torsion angles, and ring geometry for all instances of the Ligand of Interest. In addition, ligands with molecular weight > 250 and outliers as shown on the validation Tables will

also be included. For torsion angles, if less than 5% of the Mogul distribution of torsion angles is within 10 degrees of the torsion angle in question, then that torsion angle is considered an outlier. Any bond that is central to one or more torsion angles identified as an outlier by Mogul will be highlighted in the graph. For rings, the root-mean-square deviation (RMSD) between the ring in question and similar rings identified by Mogul is calculated over all ring torsion angles. If the average RMSD is greater than 60 degrees and the minimal RMSD between the ring in question and any Mogul-identified rings is also greater than 60 degrees, then that ring is considered an outlier. The outliers are highlighted in purple. The color gray indicates Mogul did not find sufficient equivalents in the CSD to analyse the geometry.

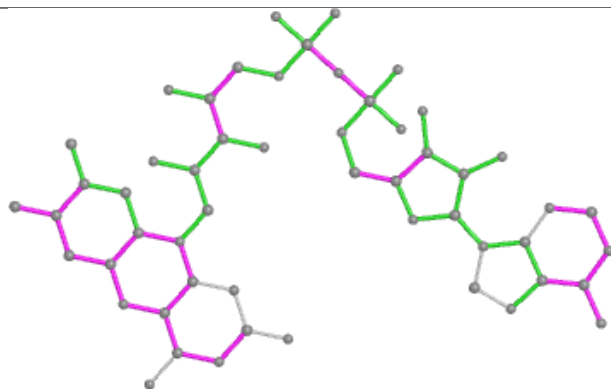




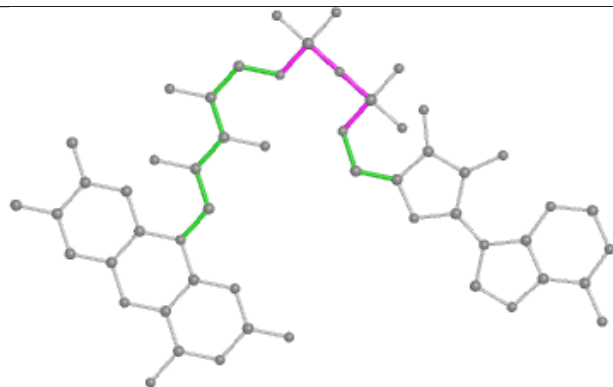
## Ligand FAD D 301



Bond lengths



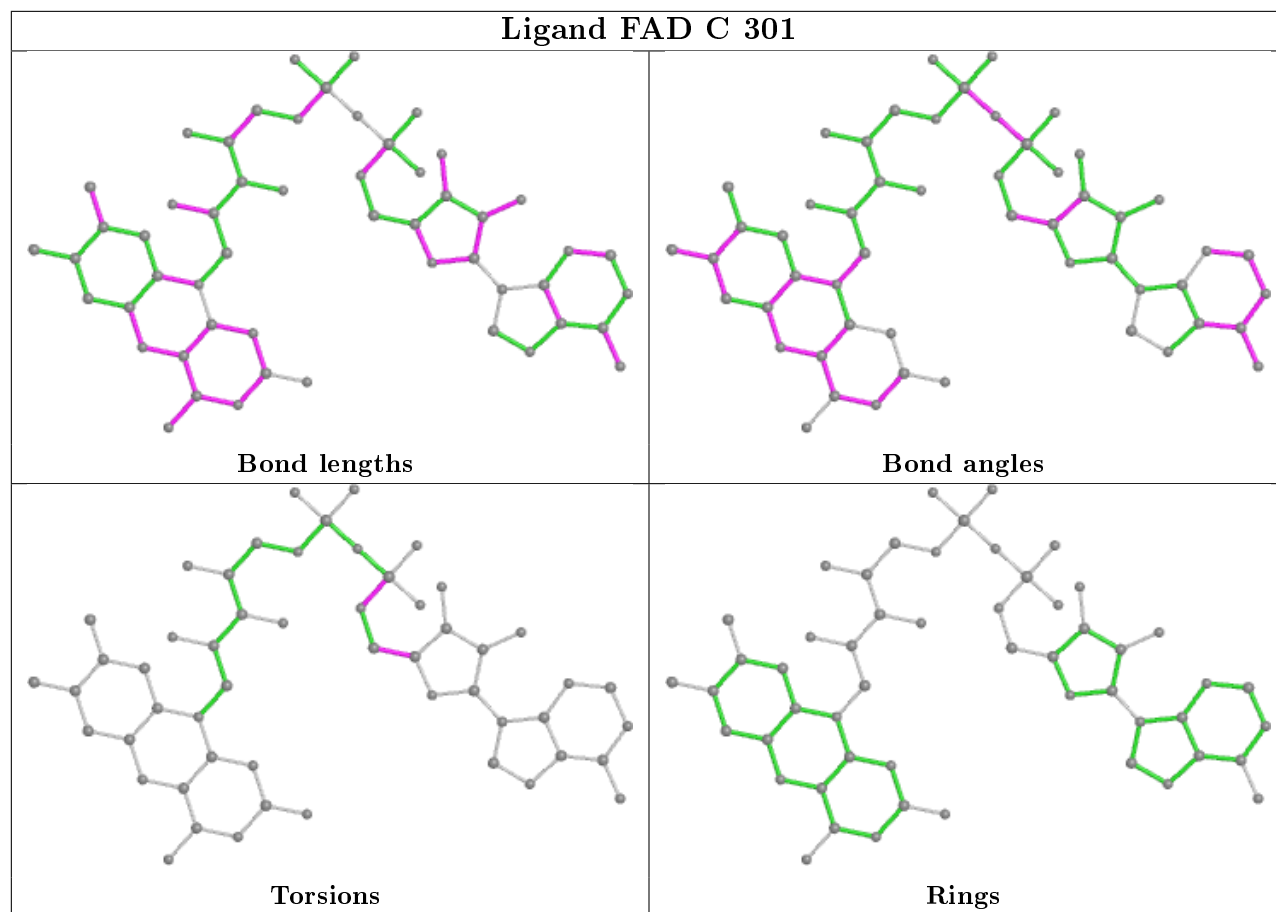
Bond angles

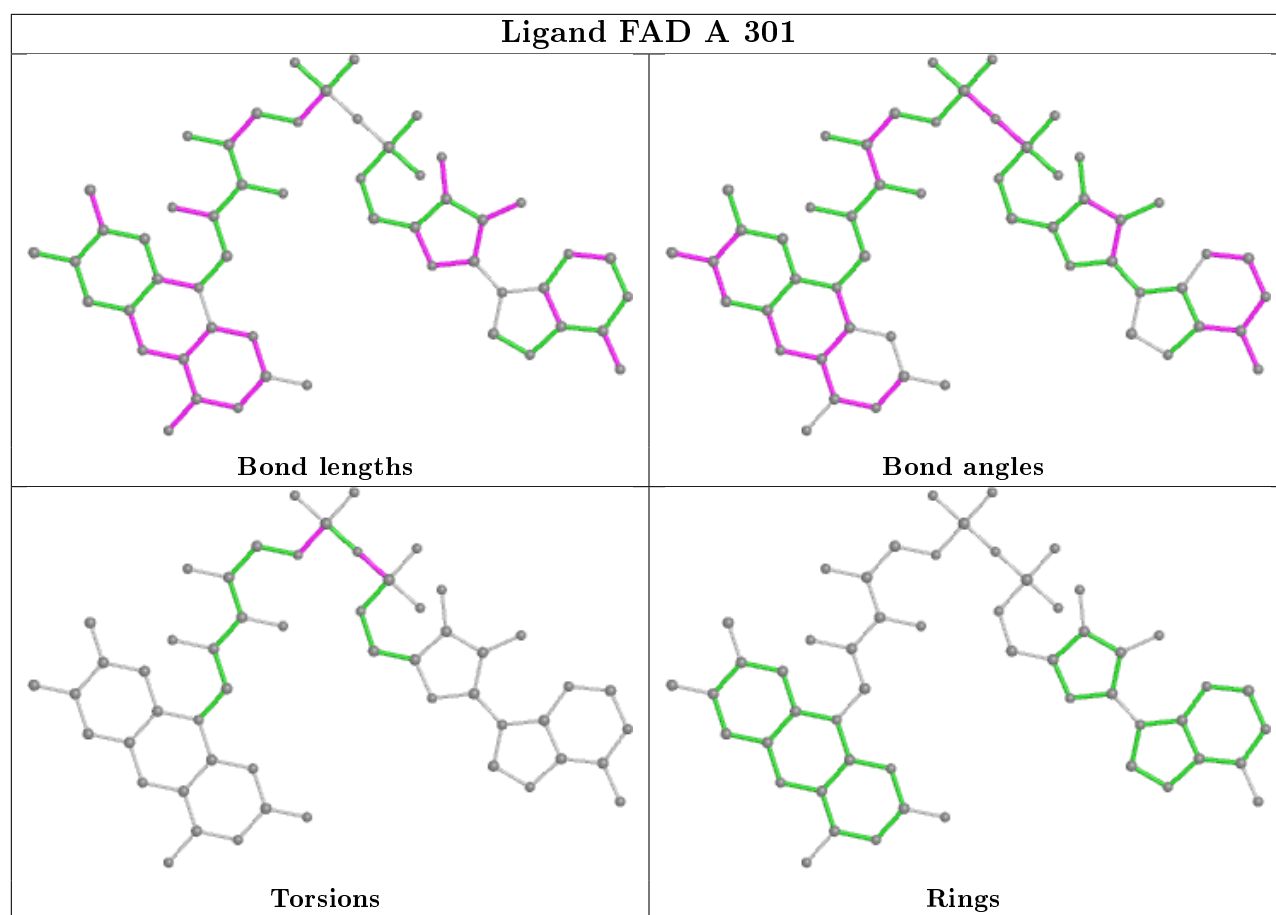


Torsions



Rings





## 5.7 Other polymers [i](#)

There are no such residues in this entry.

## 5.8 Polymer linkage issues [i](#)

There are no chain breaks in this entry.

## 6 Fit of model and data ⓘ

### 6.1 Protein, DNA and RNA chains ⓘ

In the following table, the column labelled ‘#RSRZ> 2’ contains the number (and percentage) of RSRZ outliers, followed by percent RSRZ outliers for the chain as percentile scores relative to all X-ray entries and entries of similar resolution. The OWAB column contains the minimum, median, 95<sup>th</sup> percentile and maximum values of the occupancy-weighted average B-factor per residue. The column labelled ‘Q< 0.9’ lists the number of (and percentage) of residues with an average occupancy less than 0.9.

Mol	Chain	Analysed	<RSRZ>	#RSRZ>2	OWAB(Å <sup>2</sup> )	Q<0.9
1	A	248/293 (84%)	-0.04	9 (3%) 42 46	18, 28, 50, 64	0
1	B	254/293 (86%)	-0.19	7 (2%) 53 58	15, 26, 42, 53	0
1	C	242/293 (82%)	-0.05	9 (3%) 41 45	18, 29, 46, 64	0
1	D	255/293 (87%)	-0.12	7 (2%) 54 59	14, 26, 45, 65	0
All	All	999/1172 (85%)	-0.10	32 (3%) 47 52	14, 27, 46, 65	0

All (32) RSRZ outliers are listed below:

Mol	Chain	Res	Type	RSRZ
1	D	242	ALA	6.7
1	D	244	TYR	5.2
1	A	241	PRO	5.1
1	D	208	SER	4.8
1	D	243	HIS	4.5
1	C	233	TRP	3.7
1	A	238	LYS	3.5
1	A	128	ASP	3.2
1	B	33	HIS	3.1
1	B	244	TYR	3.1
1	A	207	VAL	3.1
1	B	242	ALA	3.1
1	C	33	HIS	2.9
1	C	131	SER	2.8
1	B	208	SER	2.7
1	A	244	TYR	2.7
1	A	131	SER	2.6
1	C	4	LEU	2.5
1	C	2	ILE	2.5
1	B	51	LEU	2.5
1	A	50	CYS	2.5

*Continued on next page...*

*Continued from previous page...*

Mol	Chain	Res	Type	RSRZ
1	C	185	TYR	2.5
1	D	205	ALA	2.5
1	B	4	LEU	2.4
1	D	241	PRO	2.3
1	B	-1	GLY	2.3
1	C	240	PRO	2.2
1	C	208	SER	2.2
1	D	245	GLU	2.2
1	C	3	PRO	2.1
1	A	2	ILE	2.1
1	A	126	THR	2.1

## 6.2 Non-standard residues in protein, DNA, RNA chains [i](#)

There are no non-standard protein/DNA/RNA residues in this entry.

## 6.3 Carbohydrates [i](#)

There are no carbohydrates in this entry.

## 6.4 Ligands [i](#)

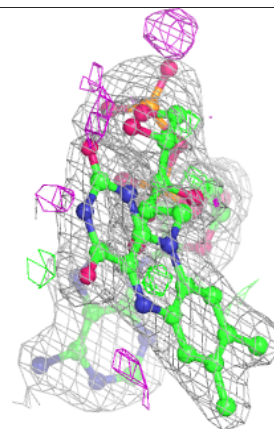
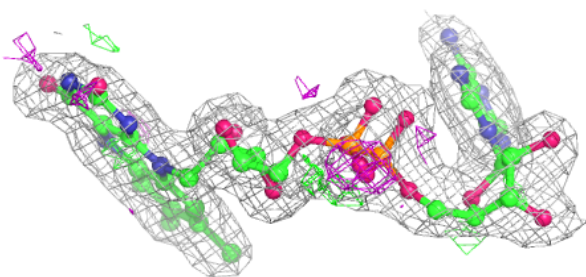
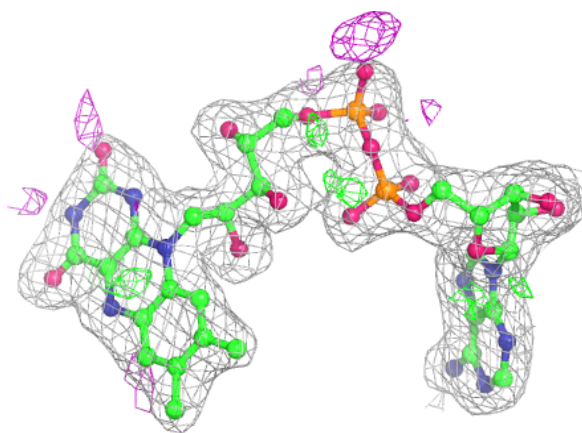
In the following table, the Atoms column lists the number of modelled atoms in the group and the number defined in the chemical component dictionary. The B-factors column lists the minimum, median, 95<sup>th</sup> percentile and maximum values of B factors of atoms in the group. The column labelled 'Q< 0.9' lists the number of atoms with occupancy less than 0.9.

Mol	Type	Chain	Res	Atoms	RSCC	RSR	B-factors(Å <sup>2</sup> )	Q<0.9
3	GOL	D	302	6/6	0.83	0.22	29,37,41,44	0
3	GOL	C	302	6/6	0.90	0.11	38,43,49,50	0
3	GOL	D	303	6/6	0.90	0.17	27,32,36,37	0
3	GOL	A	302	6/6	0.93	0.17	33,36,40,45	0
2	FAD	C	301	53/53	0.95	0.10	19,29,46,50	0
2	FAD	A	301	53/53	0.95	0.10	20,27,39,48	0
2	FAD	B	301	53/53	0.96	0.10	15,20,34,43	0
2	FAD	D	301	53/53	0.97	0.09	14,22,32,44	0

The following is a graphical depiction of the model fit to experimental electron density of all instances of the Ligand of Interest. In addition, ligands with molecular weight > 250 and outliers as shown on the geometry validation Tables will also be included. Each fit is shown from different orientation to approximate a three-dimensional view.

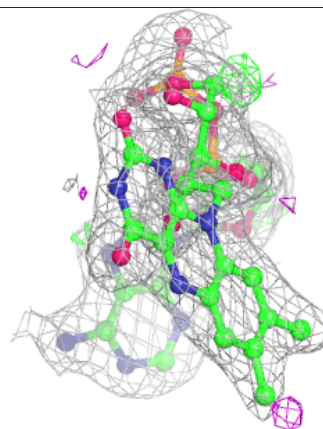
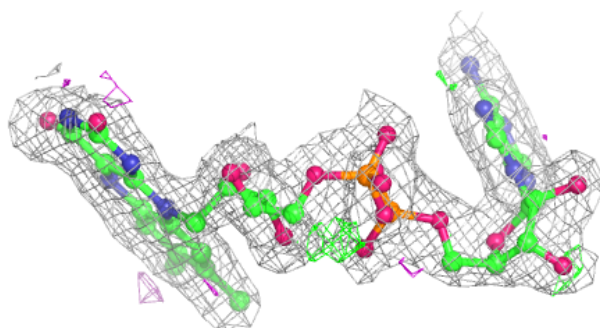
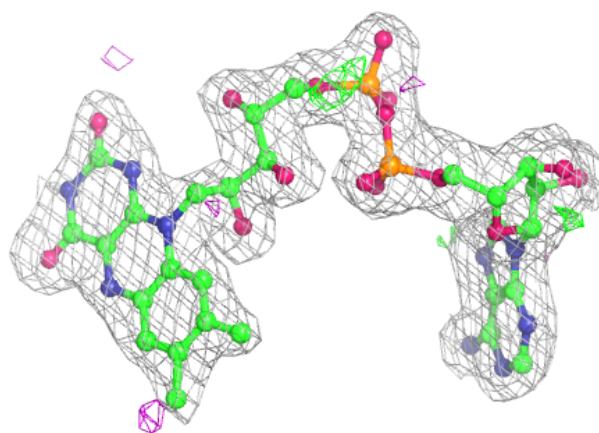
**Electron density around FAD C 301:**

$2mF_o-DF_c$  (at 0.7 rmsd) in gray  
 $mF_o-DF_c$  (at 3 rmsd) in purple (negative)  
and green (positive)



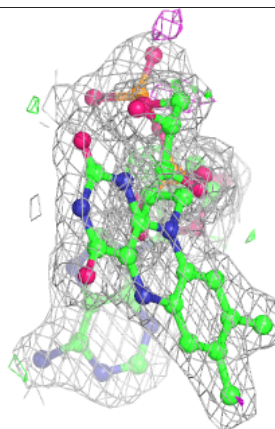
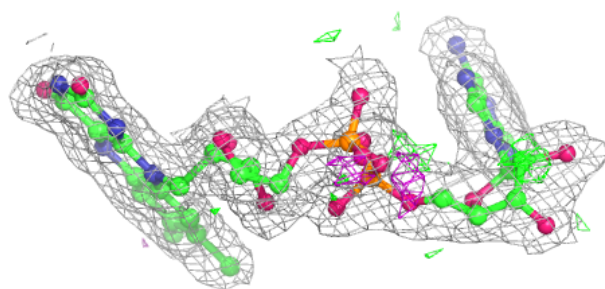
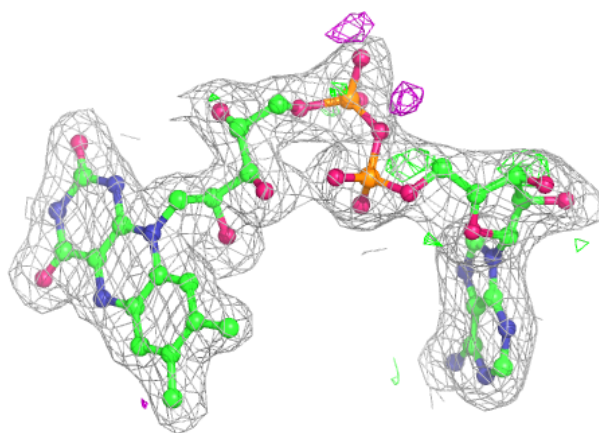
**Electron density around FAD A 301:**

$2mF_o-DF_c$  (at 0.7 rmsd) in gray  
 $mF_o-DF_c$  (at 3 rmsd) in purple (negative)  
and green (positive)

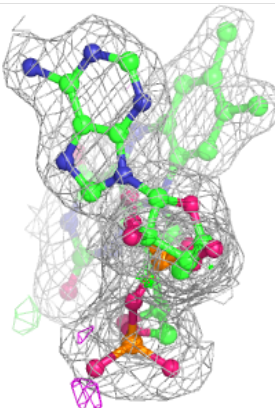
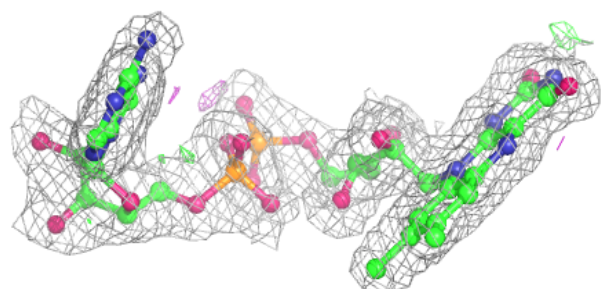
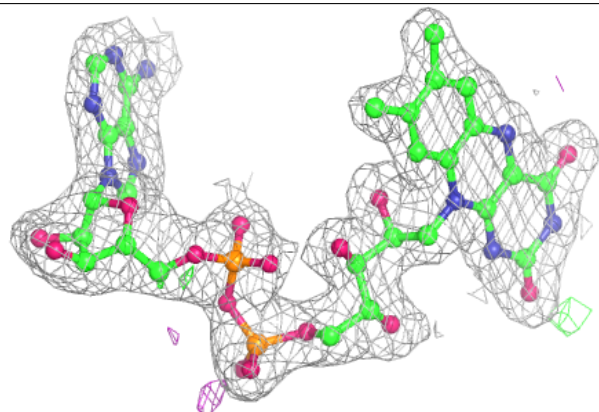


**Electron density around FAD B 301:**

$2mF_o-DF_c$  (at 0.7 rmsd) in gray  
 $mF_o-DF_c$  (at 3 rmsd) in purple (negative)  
and green (positive)

**Electron density around FAD D 301:**

$2mF_o-DF_c$  (at 0.7 rmsd) in gray  
 $mF_o-DF_c$  (at 3 rmsd) in purple (negative)  
and green (positive)





## 6.5 Other polymers [i](#)

There are no such residues in this entry.