



Full wwPDB X-ray Structure Validation Report ⓘ

Jun 14, 2020 – 07:43 am BST

PDB ID : 1XVI
Title : Crystal Structure of YedP, phosphatase-like domain protein from Escherichia coli K12
Authors : Kim, Y.; Joachimiak, A.; Cymborowski, M.; Skarina, T.; Savchenko, A.; Edwards, A.; Midwest Center for Structural Genomics (MCSG)
Deposited on : 2004-10-28
Resolution : 2.26 Å(reported)

This is a Full wwPDB X-ray Structure Validation Report for a publicly released PDB entry.

We welcome your comments at validation@mail.wwpdb.org

A user guide is available at

<https://www.wwpdb.org/validation/2017/XrayValidationReportHelp>

with specific help available everywhere you see the ⓘ symbol.

The following versions of software and data (see [references ⓘ](#)) were used in the production of this report:

MolProbity	:	4.02b-467
Mogul	:	1.8.5 (274361), CSD as541be (2020)
Xtriage (Phenix)	:	1.13
EDS	:	2.11
Percentile statistics	:	20191225.v01 (using entries in the PDB archive December 25th 2019)
Refmac	:	5.8.0158
CCP4	:	7.0.044 (Gargrove)
Ideal geometry (proteins)	:	Engh & Huber (2001)
Ideal geometry (DNA, RNA)	:	Parkinson et al. (1996)
Validation Pipeline (wwPDB-VP)	:	2.11

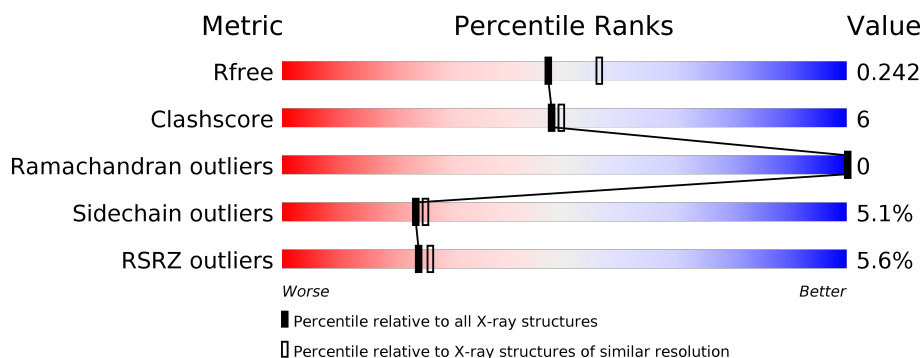
1 Overall quality at a glance

The following experimental techniques were used to determine the structure:

X-RAY DIFFRACTION

The reported resolution of this entry is 2.26 Å.

Percentile scores (ranging between 0-100) for global validation metrics of the entry are shown in the following graphic. The table shows the number of entries on which the scores are based.



Metric	Whole archive (#Entries)	Similar resolution (#Entries, resolution range(Å))
R_{free}	130704	1377 (2.26-2.26)
Clashscore	141614	1487 (2.26-2.26)
Ramachandran outliers	138981	1449 (2.26-2.26)
Sidechain outliers	138945	1450 (2.26-2.26)
RSRZ outliers	127900	1356 (2.26-2.26)

The table below summarises the geometric issues observed across the polymeric chains and their fit to the electron density. The red, orange, yellow and green segments on the lower bar indicate the fraction of residues that contain outliers for ≥ 3 , 2, 1 and 0 types of geometric quality criteria respectively. A grey segment represents the fraction of residues that are not modelled. The numeric value for each fraction is indicated below the corresponding segment, with a dot representing fractions $\leq 5\%$. The upper red bar (where present) indicates the fraction of residues that have poor fit to the electron density. The numeric value is given above the bar.

Mol	Chain	Length	Quality of chain
1	A	275	<div> <div>4%</div> <div> <div></div> <div>71%</div> <div>11%</div> <div>•</div> <div>16%</div> </div> </div>
1	B	275	<div> <div>5%</div> <div> <div></div> <div>70%</div> <div>13%</div> <div>•</div> <div>15%</div> </div> </div>

2 Entry composition

There are 6 unique types of molecules in this entry. The entry contains 4166 atoms, of which 0 are hydrogens and 0 are deuteriums.

In the tables below, the ZeroOcc column contains the number of atoms modelled with zero occupancy, the AltConf column contains the number of residues with at least one atom in alternate conformation and the Trace column contains the number of residues modelled with at most 2 atoms.

- Molecule 1 is a protein called Putative mannosyl-3-phosphoglycerate phosphatase.

Mol	Chain	Residues	Atoms					ZeroOcc	AltConf	Trace
1	A	232	Total	C	N	O	S	0	6	0
			1848	1176	313	353	6			
1	B	234	Total	C	N	O	S	0	8	0
			1876	1199	312	357	8			

There are 8 discrepancies between the modelled and reference sequences:

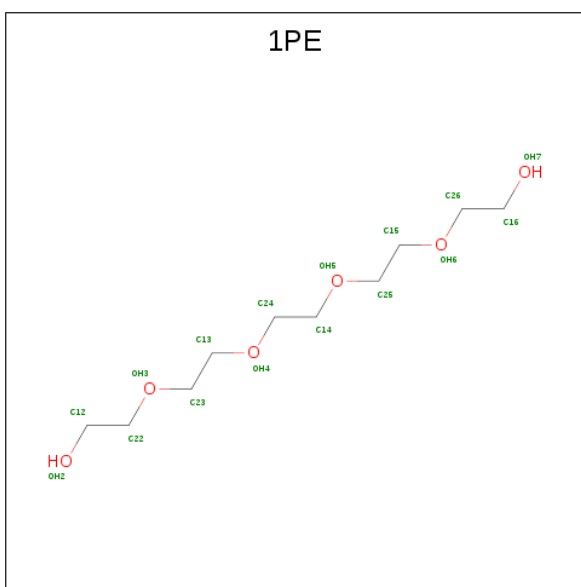
Chain	Residue	Modelled	Actual	Comment	Reference
A	-1	GLY	-	CLONING ARTIFACT	UNP P76329
A	0	HIS	-	CLONING ARTIFACT	UNP P76329
A	272	GLY	-	CLONING ARTIFACT	UNP P76329
A	273	SER	-	CLONING ARTIFACT	UNP P76329
B	-1	GLY	-	CLONING ARTIFACT	UNP P76329
B	0	HIS	-	CLONING ARTIFACT	UNP P76329
B	272	GLY	-	CLONING ARTIFACT	UNP P76329
B	273	SER	-	CLONING ARTIFACT	UNP P76329

- Molecule 2 is SULFATE ION (three-letter code: SO4) (formula: O₄S).



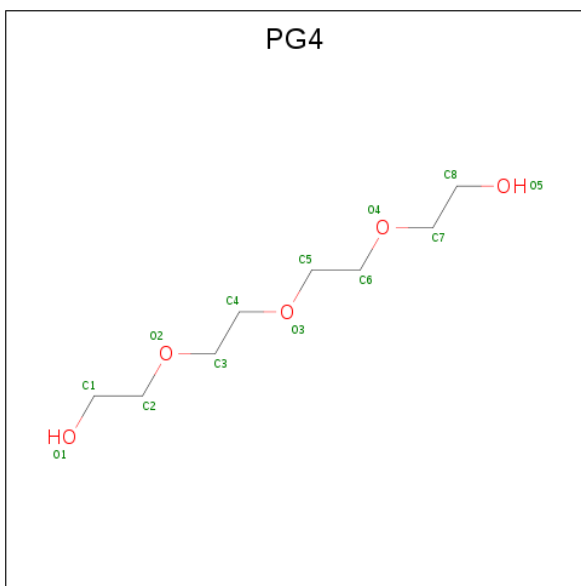
Mol	Chain	Residues	Atoms			ZeroOcc	AltConf
2	A	1	Total	O	S	0	0
			5	4	1		
2	A	1	Total	O	S	0	0
			5	4	1		
2	B	1	Total	O	S	0	0
			5	4	1		

- Molecule 3 is PENTAETHYLENE GLYCOL (three-letter code: 1PE) (formula: C₁₀H₂₂O₆).



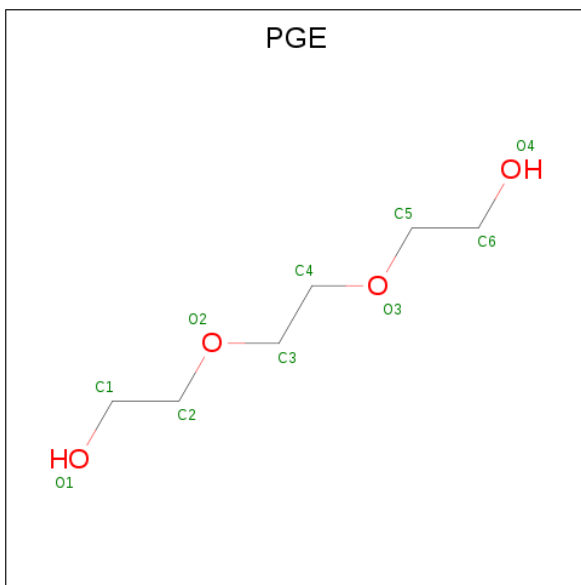
Mol	Chain	Residues	Atoms			ZeroOcc	AltConf
3	A	1	Total	C	O	0	0
			16	10	6		

- Molecule 4 is TETRAETHYLENE GLYCOL (three-letter code: PG4) (formula: $C_8H_{18}O_5$).



Mol	Chain	Residues	Atoms			ZeroOcc	AltConf
4	A	1	Total	C	O	0	0
			13	8	5		

- Molecule 5 is TRIETHYLENE GLYCOL (three-letter code: PGE) (formula: $C_6H_{14}O_4$).



Mol	Chain	Residues	Atoms			ZeroOcc	AltConf
5	A	1	Total	C	O	0	0
			10	6	4		

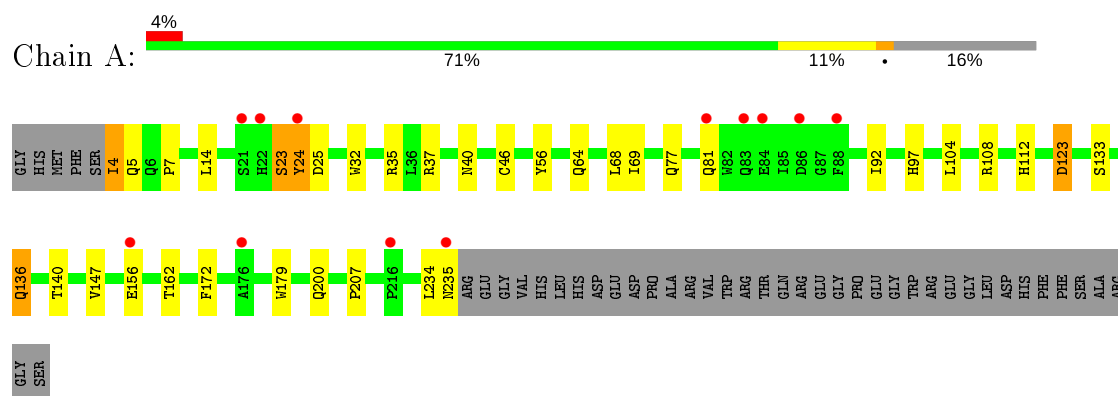
- Molecule 6 is water.

Mol	Chain	Residues	Atoms		ZeroOcc	AltConf
6	A	192	Total 192	O 192	0	0
6	B	196	Total 196	O 196	0	0

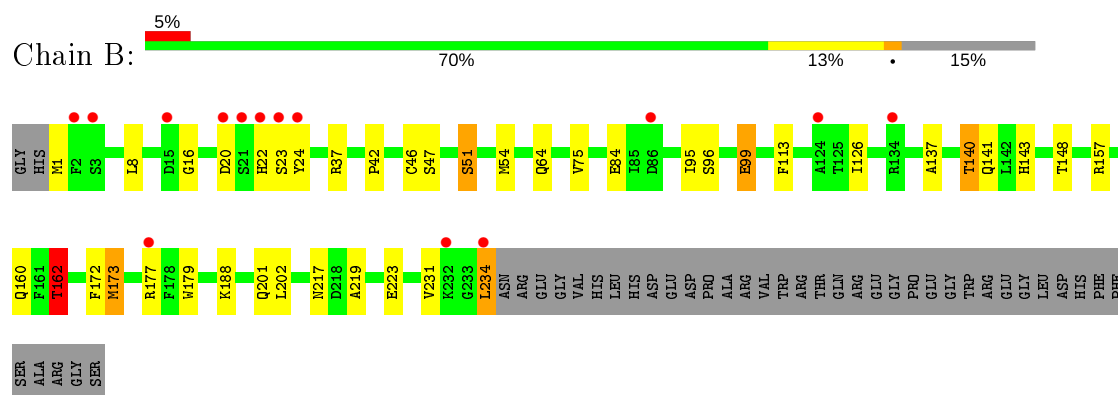
3 Residue-property plots [i](#)

These plots are drawn for all protein, RNA and DNA chains in the entry. The first graphic for a chain summarises the proportions of the various outlier classes displayed in the second graphic. The second graphic shows the sequence view annotated by issues in geometry and electron density. Residues are color-coded according to the number of geometric quality criteria for which they contain at least one outlier: green = 0, yellow = 1, orange = 2 and red = 3 or more. A red dot above a residue indicates a poor fit to the electron density ($RSRZ > 2$). Stretches of 2 or more consecutive residues without any outlier are shown as a green connector. Residues present in the sample, but not in the model, are shown in grey.

- Molecule 1: Putative mannosyl-3-phosphoglycerate phosphatase



- Molecule 1: Putative mannosyl-3-phosphoglycerate phosphatase



4 Data and refinement statistics

Property	Value	Source
Space group	P 1 21 1	Depositor
Cell constants a, b, c, α , β , γ	54.78Å 79.97Å 75.47Å 90.00° 99.56° 90.00°	Depositor
Resolution (Å)	74.33 – 2.26 35.22 – 2.26	Depositor EDS
% Data completeness (in resolution range)	96.8 (74.33-2.26) 96.8 (35.22-2.26)	Depositor EDS
R_{merge}	0.06	Depositor
R_{sym}	(Not available)	Depositor
$\langle I/\sigma(I) \rangle$ ¹	3.35 (at 2.27Å)	Xtriage
Refinement program	REFMAC 5.2.0000	Depositor
R, R_{free}	0.184 , 0.243 0.183 , 0.242	Depositor DCC
R_{free} test set	2964 reflections (10.15%)	wwPDB-VP
Wilson B-factor (Å ²)	28.3	Xtriage
Anisotropy	0.158	Xtriage
Bulk solvent k_{sol} (e/Å ³), B_{sol} (Å ²)	0.35 , 57.3	EDS
L-test for twinning ²	$\langle L \rangle = 0.49$, $\langle L^2 \rangle = 0.33$	Xtriage
Estimated twinning fraction	No twinning to report.	Xtriage
F_o, F_c correlation	0.94	EDS
Total number of atoms	4166	wwPDB-VP
Average B, all atoms (Å ²)	32.0	wwPDB-VP

Xtriage's analysis on translational NCS is as follows: *The largest off-origin peak in the Patterson function is 9.12% of the height of the origin peak. No significant pseudotranslation is detected.*

¹Intensities estimated from amplitudes.

²Theoretical values of $\langle |L| \rangle$, $\langle L^2 \rangle$ for acentric reflections are 0.5, 0.333 respectively for untwinned datasets, and 0.375, 0.2 for perfectly twinned datasets.

5 Model quality

5.1 Standard geometry

Bond lengths and bond angles in the following residue types are not validated in this section: PG4, PGE, SO4, 1PE

The Z score for a bond length (or angle) is the number of standard deviations the observed value is removed from the expected value. A bond length (or angle) with $|Z| > 5$ is considered an outlier worth inspection. RMSZ is the root-mean-square of all Z scores of the bond lengths (or angles).

Mol	Chain	Bond lengths		Bond angles	
		RMSZ	$\# Z > 5$	RMSZ	$\# Z > 5$
1	A	0.57	0/1905	0.68	2/2592 (0.1%)
1	B	0.62	1/1940 (0.1%)	0.70	0/2638
All	All	0.60	1/3845 (0.0%)	0.69	2/5230 (0.0%)

Chiral center outliers are detected by calculating the chiral volume of a chiral center and verifying if the center is modelled as a planar moiety or with the opposite hand. A planarity outlier is detected by checking planarity of atoms in a peptide group, atoms in a mainchain group or atoms of a sidechain that are expected to be planar.

Mol	Chain	#Chirality outliers	#Planarity outliers
1	A	0	1

All (1) bond length outliers are listed below:

Mol	Chain	Res	Type	Atoms	Z	Observed(Å)	Ideal(Å)
1	B	162	THR	CA-CB	5.86	1.68	1.53

All (2) bond angle outliers are listed below:

Mol	Chain	Res	Type	Atoms	Z	Observed(°)	Ideal(°)
1	A	35	ARG	NE-CZ-NH2	-6.31	117.14	120.30
1	A	14	LEU	CA-CB-CG	5.18	127.22	115.30

There are no chirality outliers.

All (1) planarity outliers are listed below:

Mol	Chain	Res	Type	Group
1	A	23	SER	Peptide

5.2 Too-close contacts ⓘ

In the following table, the Non-H and H(model) columns list the number of non-hydrogen atoms and hydrogen atoms in the chain respectively. The H(added) column lists the number of hydrogen atoms added and optimized by MolProbity. The Clashes column lists the number of clashes within the asymmetric unit, whereas Symm-Clashes lists symmetry related clashes.

Mol	Chain	Non-H	H(model)	H(added)	Clashes	Symm-Clashes
1	A	1848	0	1833	20	0
1	B	1876	0	1869	25	0
2	A	10	0	0	0	0
2	B	5	0	0	0	0
3	A	16	0	22	1	0
4	A	13	0	18	2	0
5	A	10	0	14	0	0
6	A	192	0	0	3	0
6	B	196	0	0	6	0
All	All	4166	0	3756	46	0

The all-atom clashscore is defined as the number of clashes found per 1000 atoms (including hydrogen atoms). The all-atom clashscore for this structure is 6.

All (46) close contacts within the same asymmetric unit are listed below, sorted by their clash magnitude.

Atom-1	Atom-2	Interatomic distance (Å)	Clash overlap (Å)
1:B:37:ARG:NH1	1:B:64:GLN:O	2.13	0.81
1:B:162:THR:HG22	6:B:565:HOH:O	1.82	0.79
1:B:16:GLY:N	6:B:698:HOH:O	2.11	0.79
1:B:219:ALA:O	1:B:223:GLU:HG2	1.88	0.73
1:A:37:ARG:NH1	1:A:64:GLN:O	2.26	0.69
1:A:234:LEU:O	6:A:726:HOH:O	2.13	0.67
1:B:20:ASP:HB3	1:B:23:SER:HB3	1.78	0.66
1:B:96:SER:OG	1:B:99[A]:GLU:HG2	1.95	0.66
1:A:4:ILE:HG13	6:A:650:HOH:O	1.96	0.66
1:B:47:SER:HB3	1:B:54:MET:SD	2.36	0.66
1:B:157:ARG:HH11	1:B:160:GLN:NE2	1.98	0.61
1:A:133:SER:OG	1:A:136[B]:GLN:HG2	2.01	0.60
1:B:46[A]:CYS:SG	1:B:188:LYS:HG2	2.42	0.60
1:B:95[B]:ILE:HD13	6:B:570:HOH:O	2.04	0.57
1:A:5:GLN:NE2	1:A:40:ASN:HD22	2.08	0.52
1:A:32:TRP:CD1	4:A:602:PG4:H21	2.45	0.52
1:A:200:GLN:HB2	1:A:207:PRO:HD3	1.92	0.52
1:B:143:HIS:HE1	1:B:148:THR:OG1	1.93	0.51

Continued on next page...

Continued from previous page...

Atom-1	Atom-2	Interatomic distance (Å)	Clash overlap (Å)
1:A:25:ASP:OD1	1:A:56:TYR:OH	2.17	0.51
1:B:173[B]:MET:HE1	6:B:696:HOH:O	2.11	0.49
1:A:7:PRO:HB2	1:A:207:PRO:HB3	1.93	0.49
1:B:126:ILE:HG21	1:B:140:THR:CG2	2.43	0.49
1:A:172:PHE:CE1	1:A:179:TRP:HB3	2.49	0.47
1:B:157:ARG:NH1	1:B:160:GLN:NE2	2.61	0.46
1:B:64:GLN:HG3	6:B:588:HOH:O	2.16	0.46
1:B:172:PHE:CE1	1:B:179:TRP:HB3	2.52	0.45
1:B:177:ARG:HD2	6:B:643:HOH:O	2.16	0.45
1:A:5:GLN:HE21	1:A:40:ASN:HD22	1.65	0.45
1:A:46[B]:CYS:SG	1:A:69:ILE:HD12	2.58	0.44
1:A:104:LEU:HD12	1:A:147:VAL:HG11	1.99	0.43
1:A:68:LEU:HG	1:A:77:GLN:HB3	2.01	0.43
1:B:51:SER:HB2	1:B:75:VAL:HG11	2.00	0.43
1:A:97:HIS:HD2	6:A:686:HOH:O	2.02	0.43
1:B:201[B]:GLN:HG3	1:B:202:LEU:N	2.34	0.43
1:B:126:ILE:HD13	1:B:141:GLN:HG3	1.99	0.43
1:B:137:ALA:O	1:B:140:THR:HG22	2.18	0.43
1:A:123:ASP:N	1:A:123:ASP:OD2	2.49	0.43
1:B:8:LEU:O	1:B:42:PRO:HD2	2.19	0.42
1:A:23:SER:OG	1:A:24:TYR:N	2.50	0.42
1:B:143:HIS:CE1	1:B:148:THR:OG1	2.72	0.41
1:A:108:ARG:O	1:A:112:HIS:HA	2.21	0.41
1:B:234:LEU:HD12	1:B:234:LEU:HA	1.88	0.41
1:A:234:LEU:HG	1:A:235:ASN:N	2.36	0.41
1:B:113:PHE:HE1	1:B:160:GLN:HG3	1.86	0.41
3:A:601:1PE:H131	4:A:602:PG4:H82	2.03	0.40

There are no symmetry-related clashes.

5.3 Torsion angles

5.3.1 Protein backbone

In the following table, the Percentiles column shows the percent Ramachandran outliers of the chain as a percentile score with respect to all X-ray entries followed by that with respect to entries of similar resolution.

The Analysed column shows the number of residues for which the backbone conformation was analysed, and the total number of residues.

Mol	Chain	Analysed	Favoured	Allowed	Outliers	Percentiles	
1	A	236/275 (86%)	232 (98%)	4 (2%)	0	100	100
1	B	240/275 (87%)	233 (97%)	7 (3%)	0	100	100
All	All	476/550 (86%)	465 (98%)	11 (2%)	0	100	100

There are no Ramachandran outliers to report.

5.3.2 Protein sidechains ⓘ

In the following table, the Percentiles column shows the percent sidechain outliers of the chain as a percentile score with respect to all X-ray entries followed by that with respect to entries of similar resolution.

The Analysed column shows the number of residues for which the sidechain conformation was analysed, and the total number of residues.

Mol	Chain	Analysed	Rotameric	Outliers	Percentiles	
1	A	200/229 (87%)	191 (96%)	9 (4%)	27	31
1	B	204/229 (89%)	190 (93%)	14 (7%)	15	14
All	All	404/458 (88%)	381 (94%)	23 (6%)	24	20

All (23) residues with a non-rotameric sidechain are listed below:

Mol	Chain	Res	Type
1	A	4	ILE
1	A	24	TYR
1	A	81	GLN
1	A	123	ASP
1	A	136[A]	GLN
1	A	136[B]	GLN
1	A	140	THR
1	A	156	GLU
1	A	162	THR
1	B	1	MET
1	B	22	HIS
1	B	24	TYR
1	B	51	SER
1	B	84	GLU
1	B	99[A]	GLU
1	B	99[B]	GLU
1	B	140	THR
1	B	162	THR

Continued on next page...

Continued from previous page...

Mol	Chain	Res	Type
1	B	173[A]	MET
1	B	173[B]	MET
1	B	217	ASN
1	B	231	VAL
1	B	234	LEU

Some sidechains can be flipped to improve hydrogen bonding and reduce clashes. All (10) such sidechains are listed below:

Mol	Chain	Res	Type
1	A	5	GLN
1	A	81	GLN
1	A	141	GLN
1	A	200	GLN
1	B	5	GLN
1	B	40	ASN
1	B	72	ASN
1	B	143	HIS
1	B	160	GLN
1	B	200	GLN

5.3.3 RNA [i](#)

There are no RNA molecules in this entry.

5.4 Non-standard residues in protein, DNA, RNA chains [i](#)

There are no non-standard protein/DNA/RNA residues in this entry.

5.5 Carbohydrates [i](#)

There are no carbohydrates in this entry.

5.6 Ligand geometry [i](#)

6 ligands are modelled in this entry.

In the following table, the Counts columns list the number of bonds (or angles) for which Mogul statistics could be retrieved, the number of bonds (or angles) that are observed in the model and the number of bonds (or angles) that are defined in the Chemical Component Dictionary. The

Link column lists molecule types, if any, to which the group is linked. The Z score for a bond length (or angle) is the number of standard deviations the observed value is removed from the expected value. A bond length (or angle) with $|Z| > 2$ is considered an outlier worth inspection. RMSZ is the root-mean-square of all Z scores of the bond lengths (or angles).

Mol	Type	Chain	Res	Link	Bond lengths			Bond angles		
					Counts	RMSZ	# Z > 2	Counts	RMSZ	# Z > 2
2	SO4	A	502	-	4,4,4	0.16	0	6,6,6	0.20	0
2	SO4	B	503	-	4,4,4	0.19	0	6,6,6	0.27	0
5	PGE	A	603	-	9,9,9	0.44	0	8,8,8	0.35	0
2	SO4	A	501	-	4,4,4	0.17	0	6,6,6	0.26	0
4	PG4	A	602	-	12,12,12	0.62	0	11,11,11	0.57	0
3	1PE	A	601	-	15,15,15	0.71	0	14,14,14	0.69	0

In the following table, the Chirals column lists the number of chiral outliers, the number of chiral centers analysed, the number of these observed in the model and the number defined in the Chemical Component Dictionary. Similar counts are reported in the Torsion and Rings columns. '-' means no outliers of that kind were identified.

Mol	Type	Chain	Res	Link	Chirals	Torsions	Rings
5	PGE	A	603	-	-	3/7/7/7	-
4	PG4	A	602	-	-	5/10/10/10	-
3	1PE	A	601	-	-	9/13/13/13	-

There are no bond length outliers.

There are no bond angle outliers.

There are no chirality outliers.

All (17) torsion outliers are listed below:

Mol	Chain	Res	Type	Atoms
3	A	601	1PE	OH5-C14-C24-OH4
3	A	601	1PE	OH4-C13-C23-OH3
4	A	602	PG4	O1-C1-C2-O2
5	A	603	PGE	O3-C5-C6-O4
5	A	603	PGE	O2-C3-C4-O3
4	A	602	PG4	O3-C5-C6-O4
3	A	601	1PE	OH7-C16-C26-OH6
3	A	601	1PE	OH6-C15-C25-OH5
3	A	601	1PE	C13-C23-OH3-C22
3	A	601	1PE	C25-C15-OH6-C26
4	A	602	PG4	O4-C7-C8-O5
3	A	601	1PE	C23-C13-OH4-C24

Continued on next page...

Continued from previous page...

Mol	Chain	Res	Type	Atoms
4	A	602	PG4	C6-C5-O3-C4
5	A	603	PGE	C3-C4-O3-C5
3	A	601	1PE	C14-C24-OH4-C13
3	A	601	1PE	C16-C26-OH6-C15
4	A	602	PG4	O2-C3-C4-O3

There are no ring outliers.

2 monomers are involved in 2 short contacts:

Mol	Chain	Res	Type	Clashes	Symm-Clashes
4	A	602	PG4	2	0
3	A	601	1PE	1	0

5.7 Other polymers [i](#)

There are no such residues in this entry.

5.8 Polymer linkage issues [i](#)

There are no chain breaks in this entry.

6 Fit of model and data ⓘ

6.1 Protein, DNA and RNA chains ⓘ

In the following table, the column labelled ‘#RSRZ> 2’ contains the number (and percentage) of RSRZ outliers, followed by percent RSRZ outliers for the chain as percentile scores relative to all X-ray entries and entries of similar resolution. The OWAB column contains the minimum, median, 95th percentile and maximum values of the occupancy-weighted average B-factor per residue. The column labelled ‘Q< 0.9’ lists the number of (and percentage) of residues with an average occupancy less than 0.9.

Mol	Chain	Analysed	<RSRZ>	#RSRZ>2		OWAB(Å ²)	Q<0.9
1	A	232/275 (84%)	0.20	12 (5%)	27 30	16, 31, 51, 68	1 (0%)
1	B	234/275 (85%)	0.02	14 (5%)	21 23	16, 26, 49, 66	1 (0%)
All	All	466/550 (84%)	0.11	26 (5%)	24 26	16, 28, 50, 68	2 (0%)

All (26) RSRZ outliers are listed below:

Mol	Chain	Res	Type	RSRZ
1	B	22	HIS	6.7
1	A	22	HIS	6.6
1	A	21	SER	4.9
1	A	24	TYR	4.9
1	B	24	TYR	4.8
1	B	15	ASP	3.5
1	A	84[A]	GLU	3.5
1	B	23	SER	3.1
1	A	88	PHE	3.0
1	A	235	ASN	2.9
1	A	81	GLN	2.9
1	A	176	ALA	2.9
1	A	216	PRO	2.8
1	B	3	SER	2.8
1	B	86[A]	ASP	2.7
1	B	21	SER	2.7
1	B	234	LEU	2.5
1	B	124	ALA	2.5
1	B	232	LYS	2.4
1	A	83	GLN	2.3
1	A	86[A]	ASP	2.2
1	B	134	ARG	2.2
1	A	156	GLU	2.2
1	B	177	ARG	2.0

Continued on next page...

Continued from previous page...

Mol	Chain	Res	Type	RSRZ
1	B	20	ASP	2.0
1	B	2	PHE	2.0

6.2 Non-standard residues in protein, DNA, RNA chains [i](#)

There are no non-standard protein/DNA/RNA residues in this entry.

6.3 Carbohydrates [i](#)

There are no carbohydrates in this entry.

6.4 Ligands [i](#)

In the following table, the Atoms column lists the number of modelled atoms in the group and the number defined in the chemical component dictionary. The B-factors column lists the minimum, median, 95th percentile and maximum values of B factors of atoms in the group. The column labelled 'Q< 0.9' lists the number of atoms with occupancy less than 0.9.

Mol	Type	Chain	Res	Atoms	RSCC	RSR	B-factors(\AA^2)	Q<0.9
2	SO4	A	502	5/5	0.88	0.29	103,103,103,103	0
3	1PE	A	601	16/16	0.91	0.21	43,47,57,58	0
4	PG4	A	602	13/13	0.92	0.18	35,39,40,40	0
5	PGE	A	603	10/10	0.94	0.21	46,48,49,50	0
2	SO4	A	501	5/5	0.94	0.14	58,58,59,59	0
2	SO4	B	503	5/5	0.97	0.12	46,46,46,47	0

6.5 Other polymers [i](#)

There are no such residues in this entry.