



wwPDB EM Validation Summary Report ⓘ

Dec 13, 2022 – 04:53 PM JST

PDB ID : 7XW7
EMDB ID : EMD-33493
Title : TSHR-K1-70 complex
Authors : Duan, J.; Xu, P.; Luan, X.; Ji, Y.; Yuan, Q.; He, X.; Ye, J.; Cheng, X.; Jiang, H.; Zhang, S.; Jiang, Y.; Xu, H.E.
Deposited on : 2022-05-26
Resolution : 5.50 Å(reported)

This is a wwPDB EM Validation Summary Report for a publicly released PDB entry.

We welcome your comments at validation@mail.wwpdb.org

A user guide is available at

<https://www.wwpdb.org/validation/2017/EMValidationReportHelp>
with specific help available everywhere you see the ⓘ symbol.

The types of validation reports are described at

<http://www.wwpdb.org/validation/2017/FAQs#types>.

The following versions of software and data (see [references ⓘ](#)) were used in the production of this report:

EMDB validation analysis : 0.0.1.dev43
MolProbity : 4.02b-467
Percentile statistics : 20191225.v01 (using entries in the PDB archive December 25th 2019)
MapQ : 1.9.9
Ideal geometry (proteins) : Engh & Huber (2001)
Ideal geometry (DNA, RNA) : Parkinson et al. (1996)
Validation Pipeline (wwPDB-VP) : 2.31.3

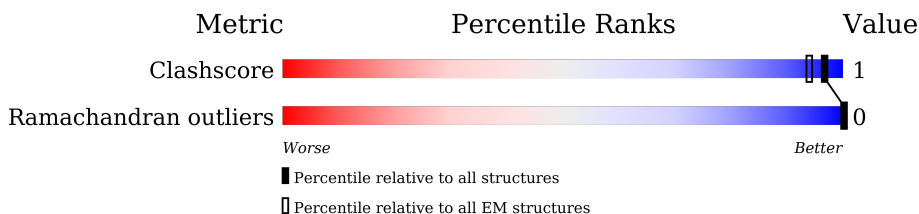
1 Overall quality at a glance

The following experimental techniques were used to determine the structure:

ELECTRON MICROSCOPY

The reported resolution of this entry is 5.50 Å.

Percentile scores (ranging between 0-100) for global validation metrics of the entry are shown in the following graphic. The table shows the number of entries on which the scores are based.



Metric	Whole archive (#Entries)	EM structures (#Entries)
Clashscore	158937	4297
Ramachandran outliers	154571	4023

The table below summarises the geometric issues observed across the polymeric chains and their fit to the map. The red, orange, yellow and green segments of the bar indicate the fraction of residues that contain outliers for ≥ 3 , 2, 1 and 0 types of geometric quality criteria respectively. A grey segment represents the fraction of residues that are not modelled. The numeric value for each fraction is indicated below the corresponding segment, with a dot representing fractions $\leq 5\%$. The upper red bar (where present) indicates the fraction of residues that have poor fit to the EM map (all-atom inclusion $< 40\%$). The numeric value is given above the bar.

Mol	Chain	Length	Quality of chain
1	A	118	<div> <div>45%</div> <div>98%</div> </div>
2	B	109	<div> <div>42%</div> <div>100%</div> </div>
3	R	702	<div> <div>31%</div> <div>80%</div> <div>19%</div> </div>

2 Entry composition

There are 3 unique types of molecules in this entry. The entry contains 3923 atoms, of which 0 are hydrogens and 0 are deuteriums.

In the tables below, the AltConf column contains the number of residues with at least one atom in alternate conformation and the Trace column contains the number of residues modelled with at most 2 atoms.

- Molecule 1 is a protein called K1-70 scFv heavy chain.

Mol	Chain	Residues	Atoms				AltConf	Trace
1	A	118	Total	C	N	O	0	0
			578	342	118	118		

- Molecule 2 is a protein called K1-70 scFv light chain.

Mol	Chain	Residues	Atoms				AltConf	Trace
2	B	109	Total	C	N	O	0	0
			531	313	109	109		

- Molecule 3 is a protein called Thyrotropin receptor.

Mol	Chain	Residues	Atoms				AltConf	Trace
3	R	567	Total	C	N	O	0	0
			2814	1680	567	567		

There are 61 discrepancies between the modelled and reference sequences:

Chain	Residue	Modelled	Actual	Comment	Reference
R	?	-	ALA	deletion	UNP P16473
R	?	-	LEU	deletion	UNP P16473
R	?	-	ASN	deletion	UNP P16473
R	?	-	SER	deletion	UNP P16473
R	?	-	PRO	deletion	UNP P16473
R	?	-	LEU	deletion	UNP P16473
R	?	-	HIS	deletion	UNP P16473
R	?	-	GLN	deletion	UNP P16473
R	?	-	GLU	deletion	UNP P16473
R	?	-	TYR	deletion	UNP P16473
R	?	-	GLU	deletion	UNP P16473
R	?	-	GLU	deletion	UNP P16473
R	?	-	ASN	deletion	UNP P16473
R	?	-	LEU	deletion	UNP P16473
R	?	-	GLY	deletion	UNP P16473

Continued on next page...

Continued from previous page...

Chain	Residue	Modelled	Actual	Comment	Reference
R	?	-	ASP	deletion	UNP P16473
R	?	-	SER	deletion	UNP P16473
R	?	-	ILE	deletion	UNP P16473
R	?	-	VAL	deletion	UNP P16473
R	?	-	GLY	deletion	UNP P16473
R	?	-	TYR	deletion	UNP P16473
R	?	-	LYS	deletion	UNP P16473
R	?	-	GLU	deletion	UNP P16473
R	?	-	LYS	deletion	UNP P16473
R	?	-	SER	deletion	UNP P16473
R	?	-	LYS	deletion	UNP P16473
R	?	-	PHE	deletion	UNP P16473
R	?	-	GLN	deletion	UNP P16473
R	?	-	ASP	deletion	UNP P16473
R	?	-	THR	deletion	UNP P16473
R	?	-	HIS	deletion	UNP P16473
R	?	-	ASN	deletion	UNP P16473
R	?	-	ASN	deletion	UNP P16473
R	?	-	ALA	deletion	UNP P16473
R	?	-	HIS	deletion	UNP P16473
R	?	-	TYR	deletion	UNP P16473
R	?	-	TYR	deletion	UNP P16473
R	?	-	VAL	deletion	UNP P16473
R	?	-	PHE	deletion	UNP P16473
R	?	-	PHE	deletion	UNP P16473
R	?	-	GLU	deletion	UNP P16473
R	?	-	GLU	deletion	UNP P16473
R	?	-	GLN	deletion	UNP P16473
R	?	-	GLU	deletion	UNP P16473
R	?	-	ASP	deletion	UNP P16473
R	?	-	GLU	deletion	UNP P16473
R	?	-	ILE	deletion	UNP P16473
R	?	-	ILE	deletion	UNP P16473
R	?	-	GLY	deletion	UNP P16473
R	?	-	PHE	deletion	UNP P16473
R	367	ASN	GLY	conflict	UNP P16473
R	368	LYS	GLN	conflict	UNP P16473
R	369	THR	GLU	conflict	UNP P16473
R	765	HIS	-	expression tag	UNP P16473
R	766	HIS	-	expression tag	UNP P16473
R	767	HIS	-	expression tag	UNP P16473
R	768	HIS	-	expression tag	UNP P16473

Continued on next page...

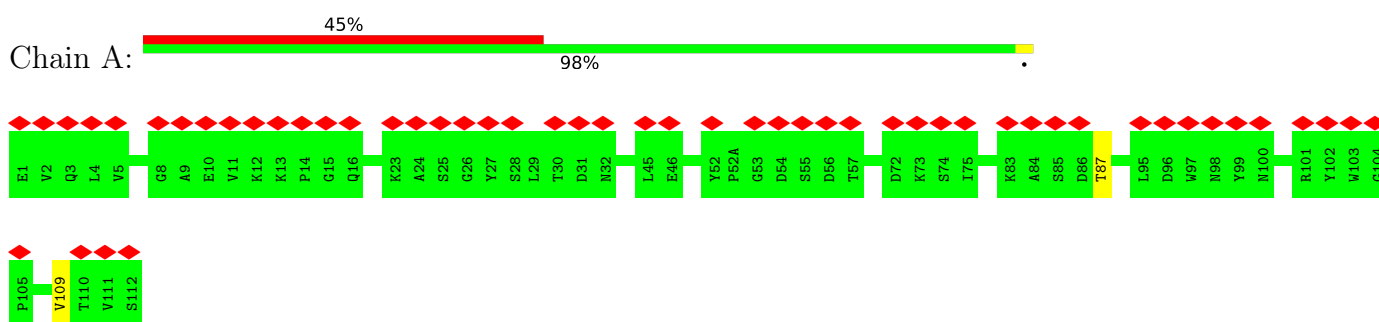
Continued from previous page...

Chain	Residue	Modelled	Actual	Comment	Reference
R	769	HIS	-	expression tag	UNP P16473
R	770	HIS	-	expression tag	UNP P16473
R	771	HIS	-	expression tag	UNP P16473
R	772	HIS	-	expression tag	UNP P16473

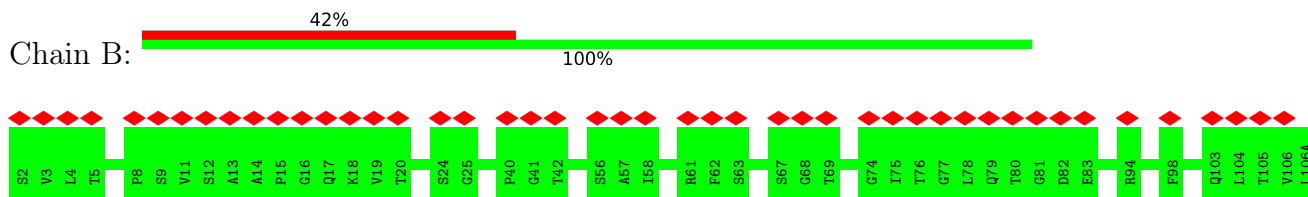
3 Residue-property plots

These plots are drawn for all protein, RNA, DNA and oligosaccharide chains in the entry. The first graphic for a chain summarises the proportions of the various outlier classes displayed in the second graphic. The second graphic shows the sequence view annotated by issues in geometry and atom inclusion in map density. Residues are color-coded according to the number of geometric quality criteria for which they contain at least one outlier: green = 0, yellow = 1, orange = 2 and red = 3 or more. A red diamond above a residue indicates a poor fit to the EM map for this residue (all-atom inclusion < 40%). Stretches of 2 or more consecutive residues without any outlier are shown as a green connector. Residues present in the sample, but not in the model, are shown in grey.

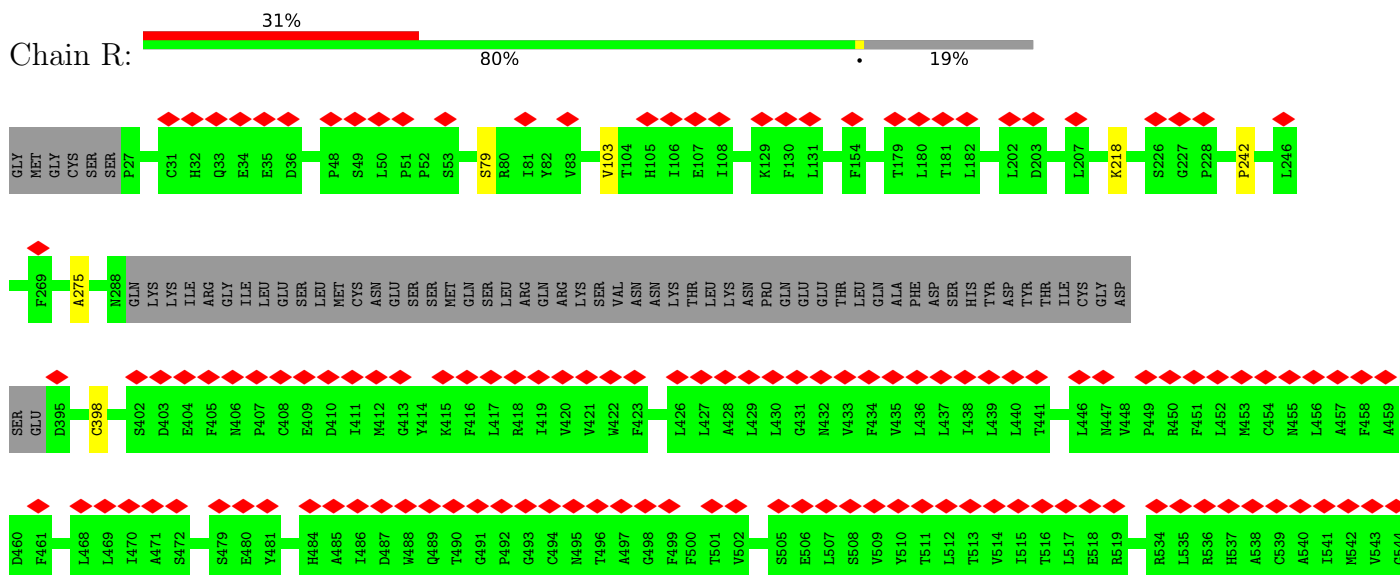
- Molecule 1: K1-70 scFv heavy chain



- Molecule 2: K1-70 scFv light chain



- Molecule 3: Thyrotropin receptor



GLN	LYS	VAL	THR	HIS	ASP	MET	ARG	GLN	GLY	LEU	HIS	ASN	MET	GLU	ASP	VAL	TYR	GLU	LEU	ILE	GLU	ASN	SER	HIS	LEU	THR	PRO	LYS	GLN	GLY	ILE	SER	GLU	GLU	TYR	MET	GLN	THR	VAL	LEU	HIS	HIS	HIS	HIS	HIS	HIS							
I635	A638	P639	I640	S641	F642	Y643	A644	L645	S646	L653	I654	S659	K660	I661	L662	L663	V664	L665	F666	M674	P675	F676	L677	Y678	A679	I680	F681	T682	L692	L693	C699	LYS	ARG	GLN	ALA	ALA	ALA	TYR	ARG	GLY	GLN	ARG	VAL	PRO	PRO	LYS	ASN	SER	THR	ASP	ILE	GLN	VAL
G545	W546	V547	C548	P556	L557	V558	G559	I560	I568	C569	L570	P571	E575	T576	P577	L578	T588	L589	N590	I591	V592	A593	F594	V595	I596	V597	C598	C599	C600	Y601	V602	K603	I604	Y605	I606	M614	P615	G616	D617	K618	D619	A623	K624	R625	M626	A627	V628	L629	I630	F631	T632	D633	F634

4 Experimental information

Property	Value	Source
EM reconstruction method	SINGLE PARTICLE	Depositor
Imposed symmetry	POINT, Not provided	
Number of particles used	52479	Depositor
Resolution determination method	FSC 0.143 CUT-OFF	Depositor
CTF correction method	PHASE FLIPPING AND AMPLITUDE CORRECTION	Depositor
Microscope	FEI TITAN KRIOS	Depositor
Voltage (kV)	300	Depositor
Electron dose ($e^-/\text{\AA}^2$)	60	Depositor
Minimum defocus (nm)	1200	Depositor
Maximum defocus (nm)	2200	Depositor
Magnification	Not provided	
Image detector	GATAN K3 (6k x 4k)	Depositor
Maximum map value	1.426	Depositor
Minimum map value	-0.002	Depositor
Average map value	0.006	Depositor
Map value standard deviation	0.044	Depositor
Recommended contour level	0.1	Depositor
Map size (Å)	208.0, 208.0, 208.0	wwPDB
Map dimensions	200, 200, 200	wwPDB
Map angles (°)	90.0, 90.0, 90.0	wwPDB
Pixel spacing (Å)	1.04, 1.04, 1.04	Depositor

5 Model quality [i](#)

5.1 Standard geometry [i](#)

The Z score for a bond length (or angle) is the number of standard deviations the observed value is removed from the expected value. A bond length (or angle) with $|Z| > 5$ is considered an outlier worth inspection. RMSZ is the root-mean-square of all Z scores of the bond lengths (or angles).

Mol	Chain	Bond lengths		Bond angles	
		RMSZ	$\# Z > 5$	RMSZ	$\# Z > 5$
1	A	0.25	0/577	0.46	0/799
2	B	0.26	0/530	0.46	0/732
3	R	0.23	0/2812	0.39	0/3921
All	All	0.24	0/3919	0.41	0/5452

There are no bond length outliers.

There are no bond angle outliers.

There are no chirality outliers.

There are no planarity outliers.

5.2 Too-close contacts [i](#)

In the following table, the Non-H and H(model) columns list the number of non-hydrogen atoms and hydrogen atoms in the chain respectively. The H(added) column lists the number of hydrogen atoms added and optimized by MolProbity. The Clashes column lists the number of clashes within the asymmetric unit, whereas Symm-Clashes lists symmetry-related clashes.

Mol	Chain	Non-H	H(model)	H(added)	Clashes	Symm-Clashes
1	A	578	0	262	1	0
2	B	531	0	245	0	0
3	R	2814	0	1227	3	0
All	All	3923	0	1734	4	0

The all-atom clashscore is defined as the number of clashes found per 1000 atoms (including hydrogen atoms). The all-atom clashscore for this structure is 1.

All (4) close contacts within the same asymmetric unit are listed below, sorted by their clash magnitude.

Atom-1	Atom-2	Interatomic distance (Å)	Clash overlap (Å)
1:A:87:THR:HA	1:A:109:VAL:O	1.99	0.62

Continued on next page...

Continued from previous page...

Atom-1	Atom-2	Interatomic distance (Å)	Clash overlap (Å)
3:R:275:ALA:HB3	3:R:398:CYS:HA	1.90	0.52
3:R:79:SER:HA	3:R:103:VAL:HA	2.00	0.43
3:R:218:LYS:HA	3:R:242:PRO:HA	2.02	0.41

There are no symmetry-related clashes.

5.3 Torsion angles [i](#)

5.3.1 Protein backbone [i](#)

In the following table, the Percentiles column shows the percent Ramachandran outliers of the chain as a percentile score with respect to all PDB entries followed by that with respect to all EM entries.

The Analysed column shows the number of residues for which the backbone conformation was analysed, and the total number of residues.

Mol	Chain	Analysed	Favoured	Allowed	Outliers	Percentiles	
1	A	116/118 (98%)	115 (99%)	1 (1%)	0	100	100
2	B	107/109 (98%)	105 (98%)	2 (2%)	0	100	100
3	R	563/702 (80%)	553 (98%)	10 (2%)	0	100	100
All	All	786/929 (85%)	773 (98%)	13 (2%)	0	100	100

There are no Ramachandran outliers to report.

5.3.2 Protein sidechains [i](#)

There are no protein residues with a non-rotameric sidechain to report in this entry.

5.3.3 RNA [i](#)

There are no RNA molecules in this entry.

5.4 Non-standard residues in protein, DNA, RNA chains [i](#)

There are no non-standard protein/DNA/RNA residues in this entry.

5.5 Carbohydrates [i](#)

There are no monosaccharides in this entry.

5.6 Ligand geometry [i](#)

There are no ligands in this entry.

5.7 Other polymers [i](#)

There are no such residues in this entry.

5.8 Polymer linkage issues [i](#)

There are no chain breaks in this entry.

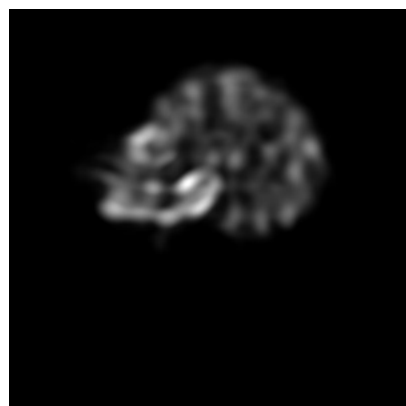
6 Map visualisation [i](#)

This section contains visualisations of the EMDB entry EMD-33493. These allow visual inspection of the internal detail of the map and identification of artifacts.

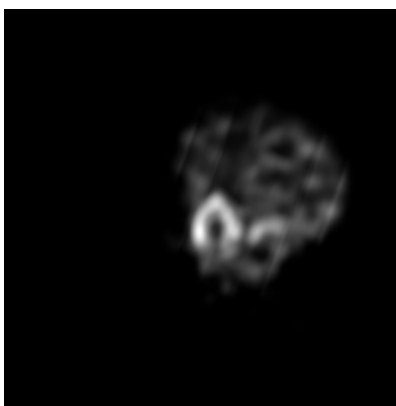
Images derived from a raw map, generated by summing the deposited half-maps, are presented below the corresponding image components of the primary map to allow further visual inspection and comparison with those of the primary map.

6.1 Orthogonal projections [i](#)

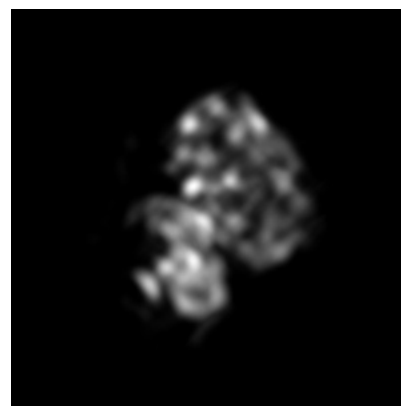
6.1.1 Primary map



X

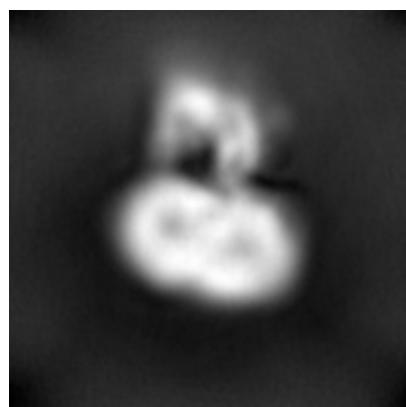


Y

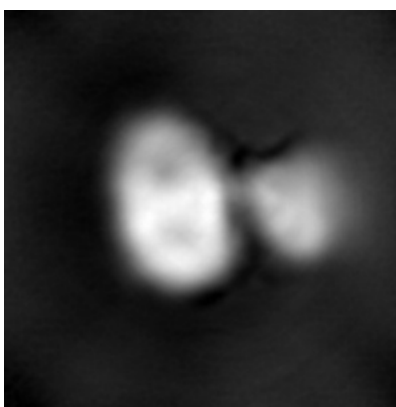


Z

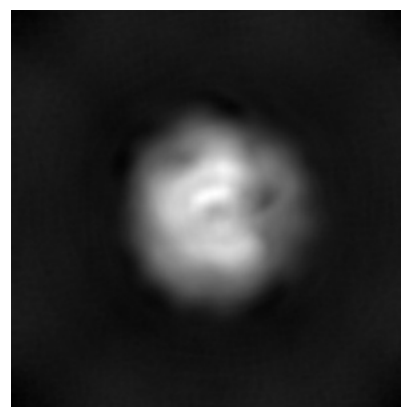
6.1.2 Raw map



X



Y

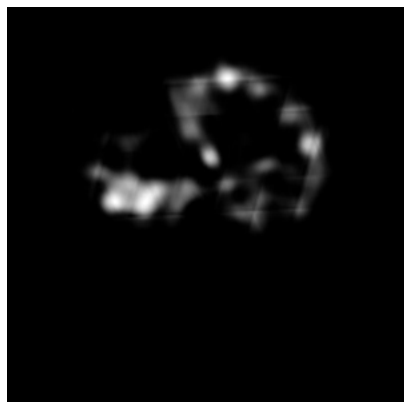


Z

The images above show the map projected in three orthogonal directions.

6.2 Central slices [i](#)

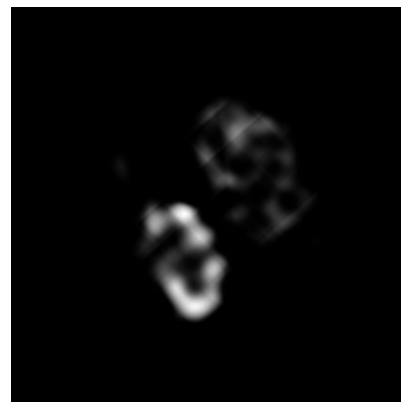
6.2.1 Primary map



X Index: 100

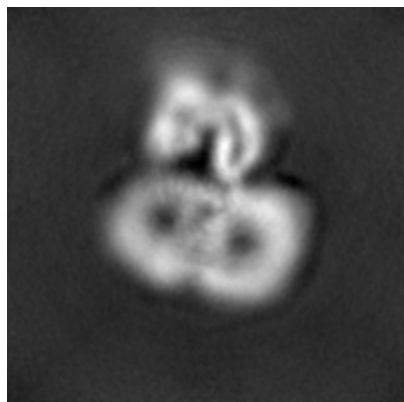


Y Index: 100

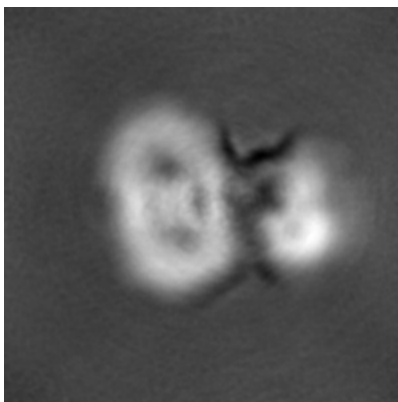


Z Index: 100

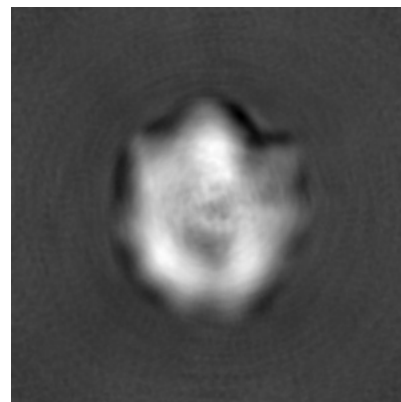
6.2.2 Raw map



X Index: 100



Y Index: 100



Z Index: 100

The images above show central slices of the map in three orthogonal directions.

6.3 Largest variance slices [i](#)

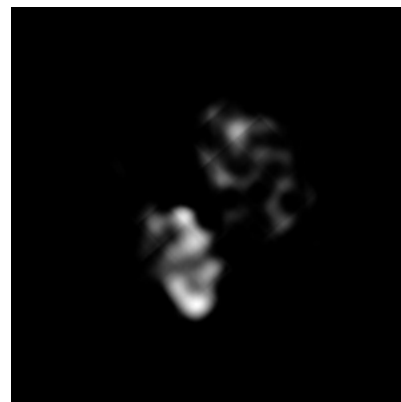
6.3.1 Primary map



X Index: 89

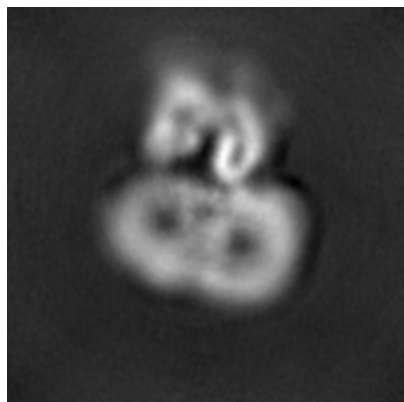


Y Index: 91

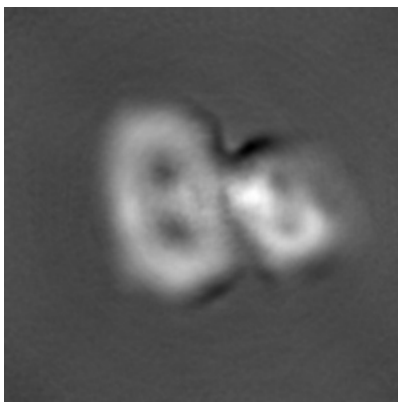


Z Index: 98

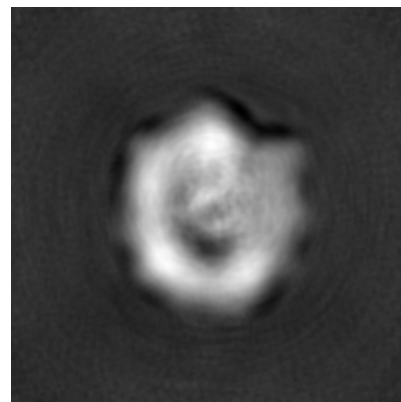
6.3.2 Raw map



X Index: 104



Y Index: 108

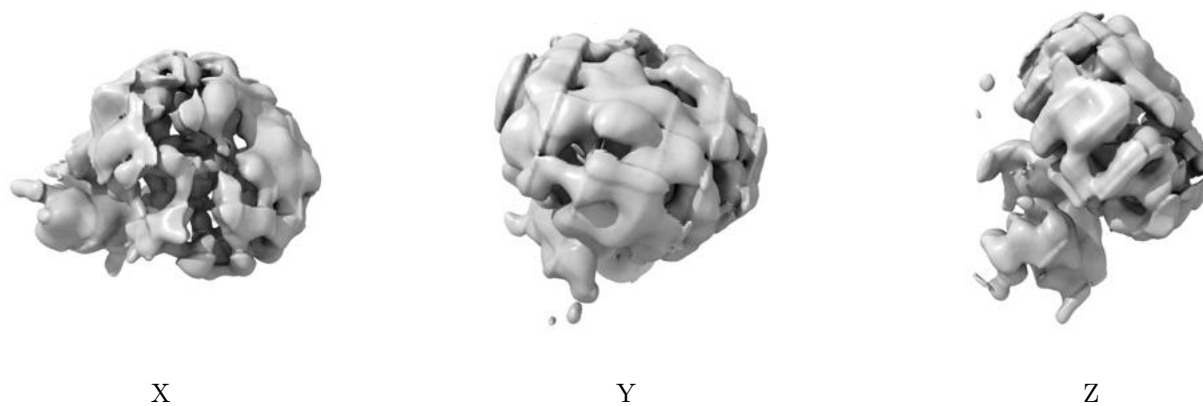


Z Index: 94

The images above show the largest variance slices of the map in three orthogonal directions.

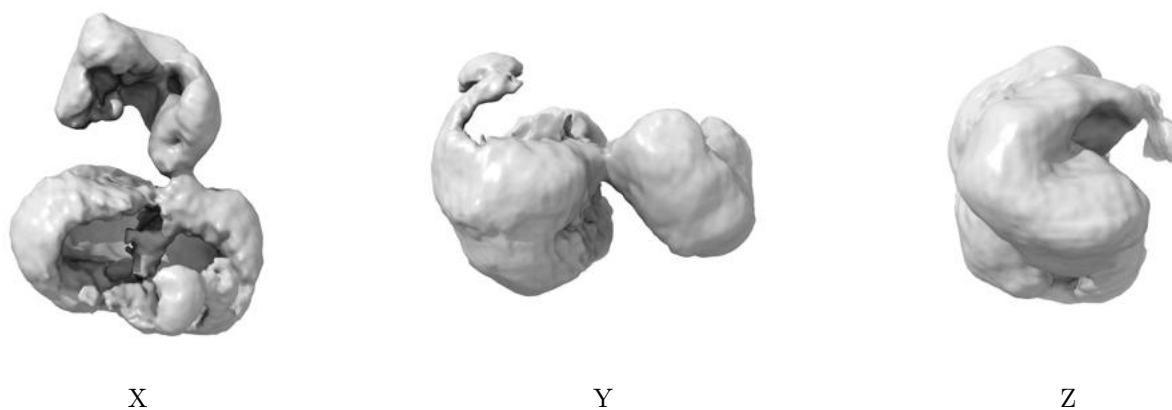
6.4 Orthogonal surface views [i](#)

6.4.1 Primary map



The images above show the 3D surface view of the map at the recommended contour level 0.1. These images, in conjunction with the slice images, may facilitate assessment of whether an appropriate contour level has been provided.

6.4.2 Raw map



These images show the 3D surface of the raw map. The raw map's contour level was selected so that its surface encloses the same volume as the primary map does at its recommended contour level.

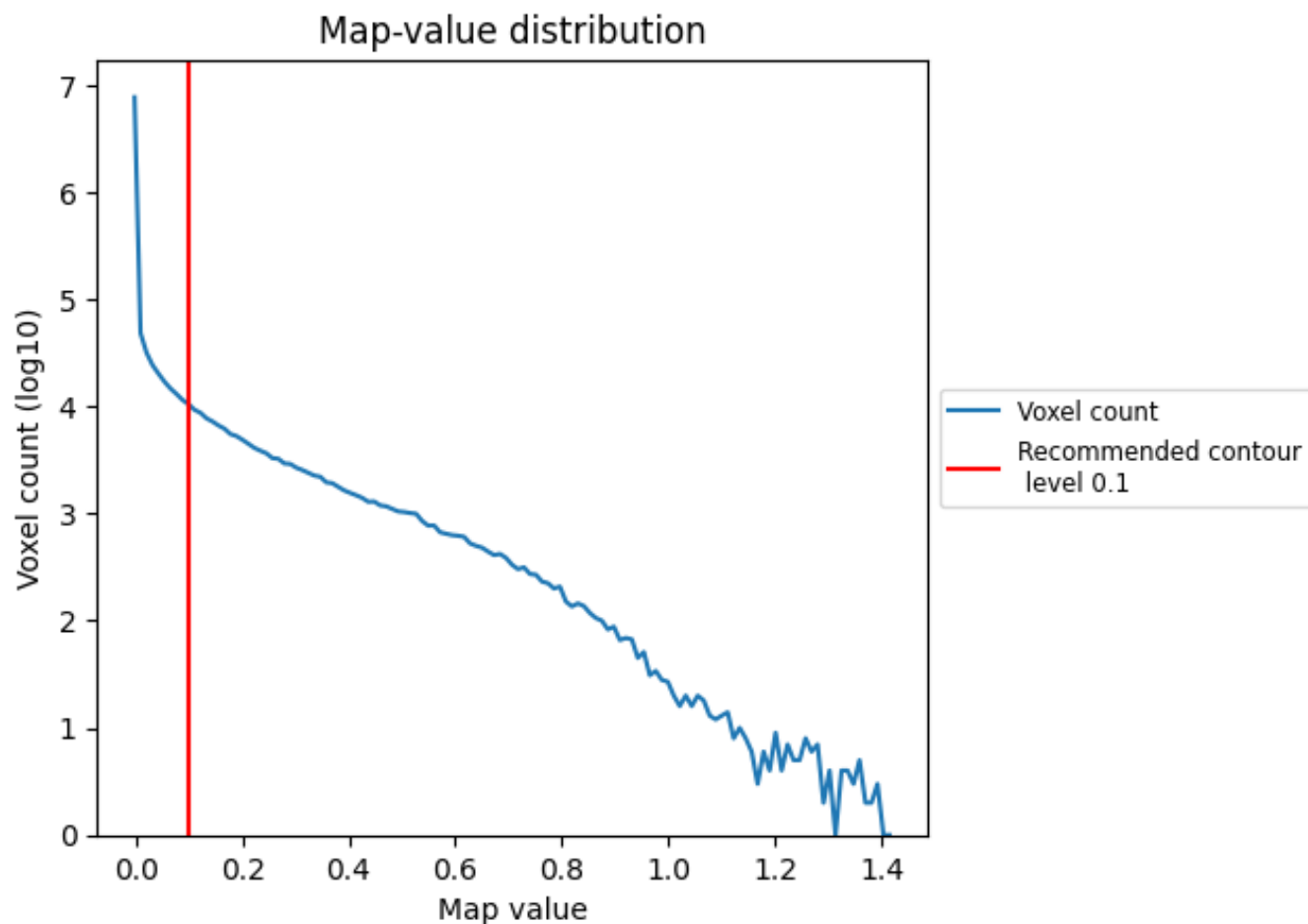
6.5 Mask visualisation [i](#)

This section was not generated. No masks/segmentation were deposited.

7 Map analysis [i](#)

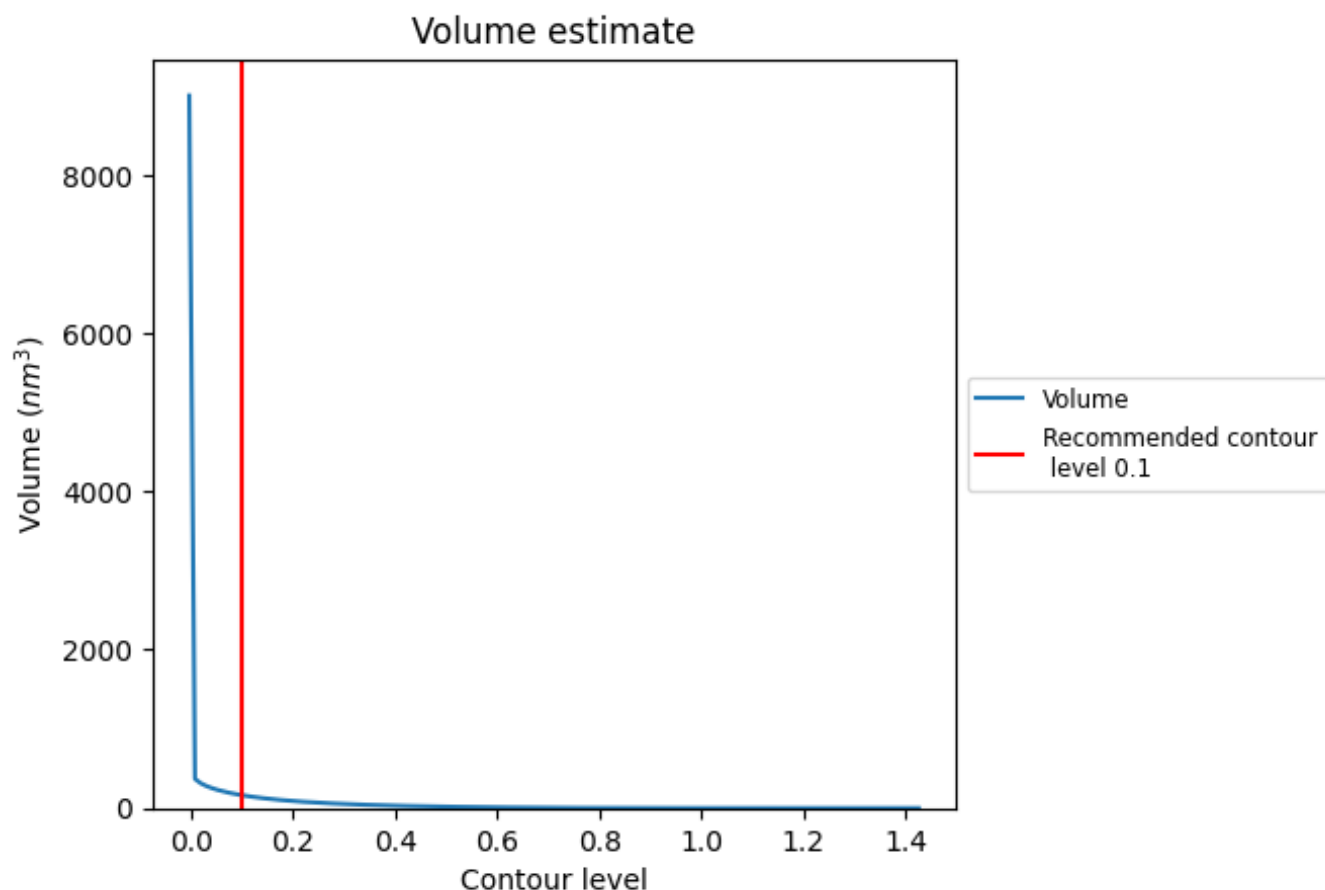
This section contains the results of statistical analysis of the map.

7.1 Map-value distribution [i](#)



The map-value distribution is plotted in 128 intervals along the x-axis. The y-axis is logarithmic. A spike in this graph at zero usually indicates that the volume has been masked.

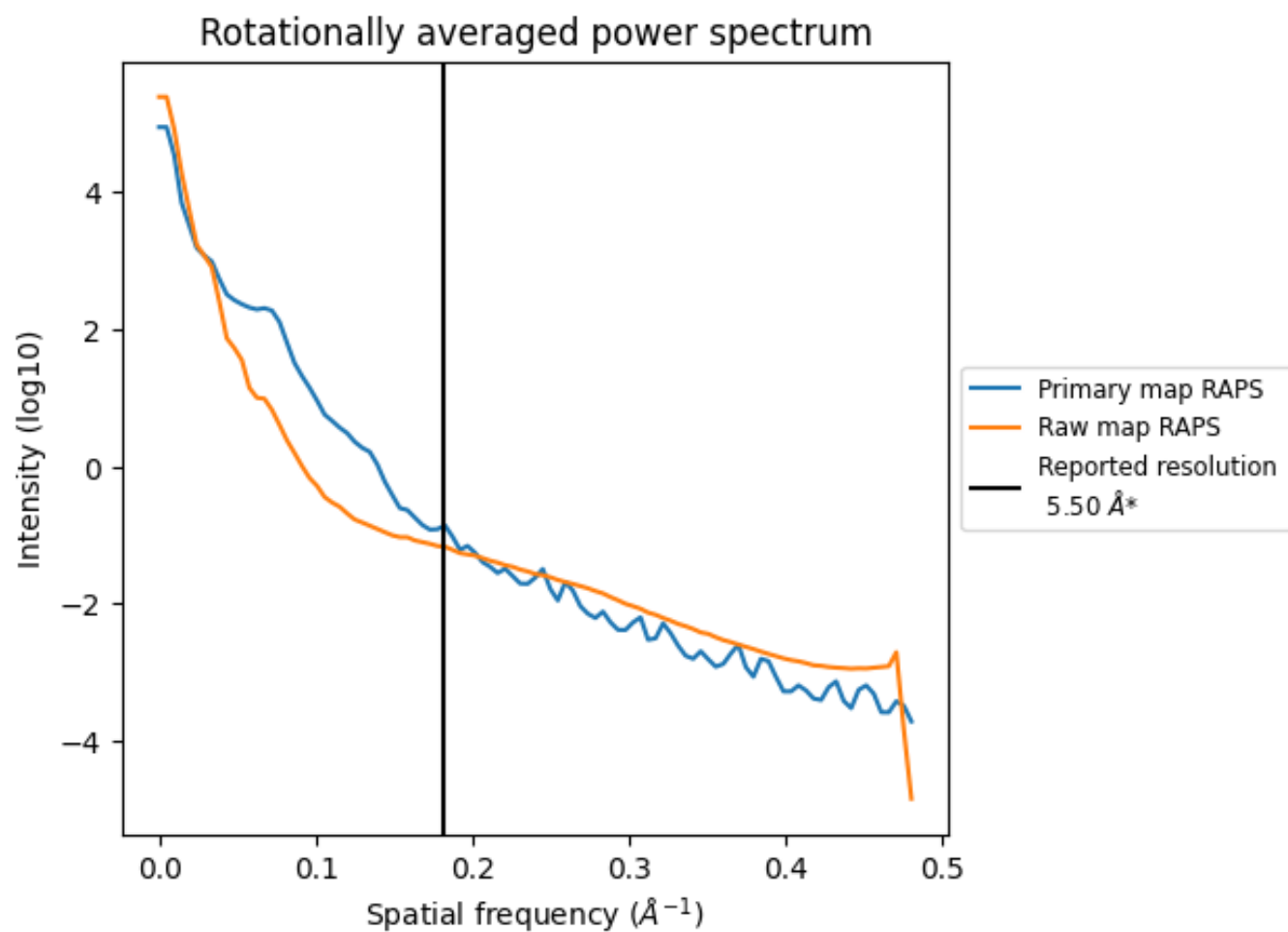
7.2 Volume estimate [i](#)



The volume at the recommended contour level is 165 nm³; this corresponds to an approximate mass of 149 kDa.

The volume estimate graph shows how the enclosed volume varies with the contour level. The recommended contour level is shown as a vertical line and the intersection between the line and the curve gives the volume of the enclosed surface at the given level.

7.3 Rotationally averaged power spectrum ⓘ

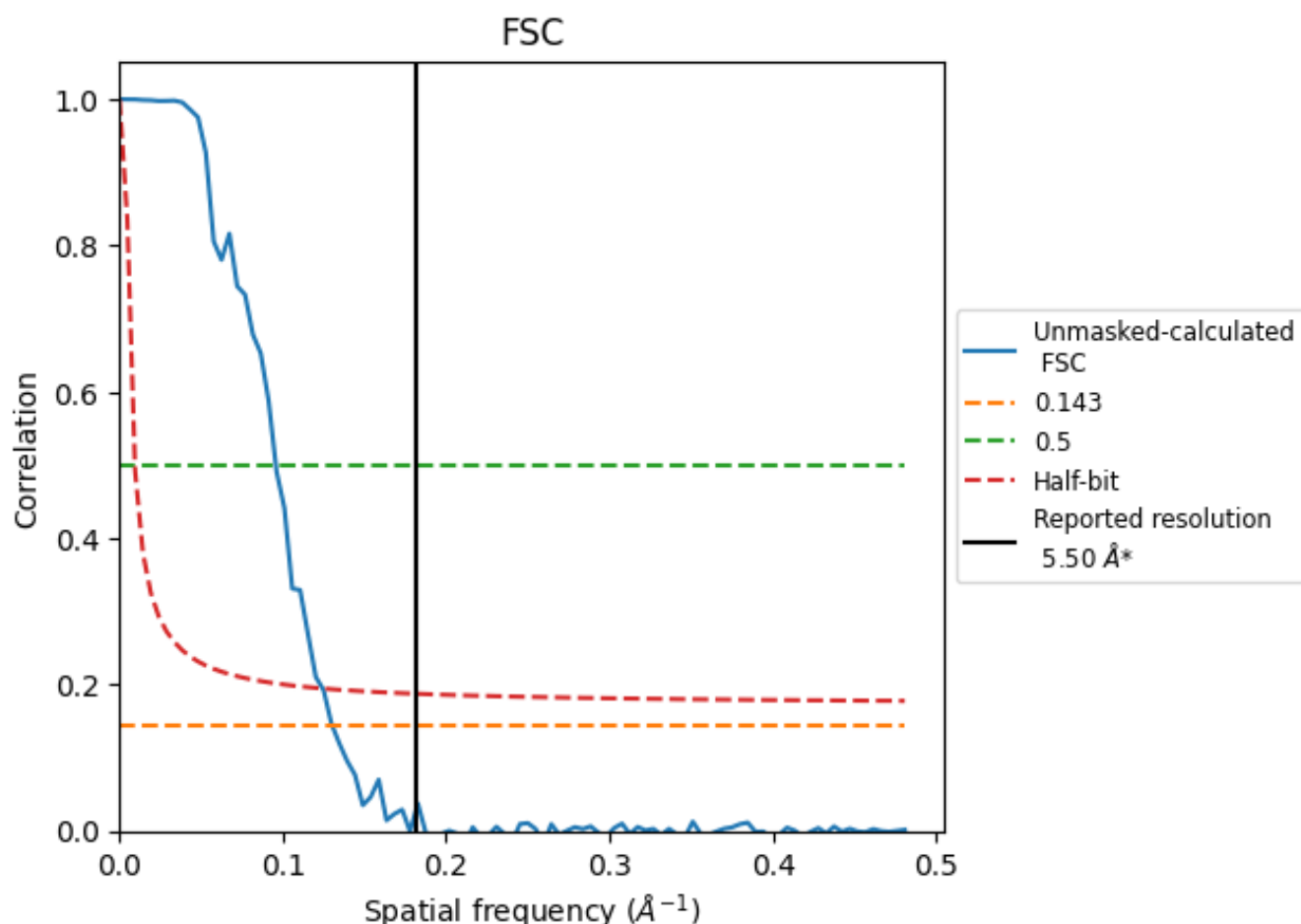


*Reported resolution corresponds to spatial frequency of 0.182 Å⁻¹

8 Fourier-Shell correlation [i](#)

Fourier-Shell Correlation (FSC) is the most commonly used method to estimate the resolution of single-particle and subtomogram-averaged maps. The shape of the curve depends on the imposed symmetry, mask and whether or not the two 3D reconstructions used were processed from a common reference. The reported resolution is shown as a black line. A curve is displayed for the half-bit criterion in addition to lines showing the 0.143 gold standard cut-off and 0.5 cut-off.

8.1 FSC [i](#)



*Reported resolution corresponds to spatial frequency of 0.182 Å⁻¹

8.2 Resolution estimates [i](#)

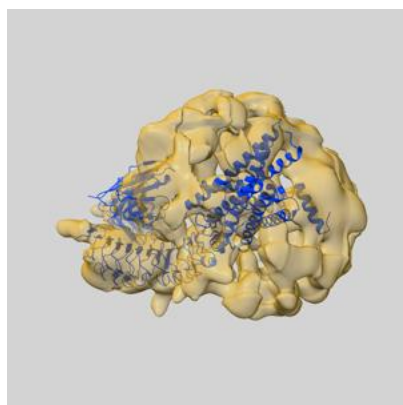
Resolution estimate (Å)	Estimation criterion (FSC cut-off)		
	0.143	0.5	Half-bit
Reported by author	5.50	-	-
Author-provided FSC curve	-	-	-
Unmasked-calculated*	7.67	10.45	8.04

*Resolution estimate based on FSC curve calculated by comparison of deposited half-maps. The value from deposited half-maps intersecting FSC 0.143 CUT-OFF 7.67 differs from the reported value 5.5 by more than 10 %

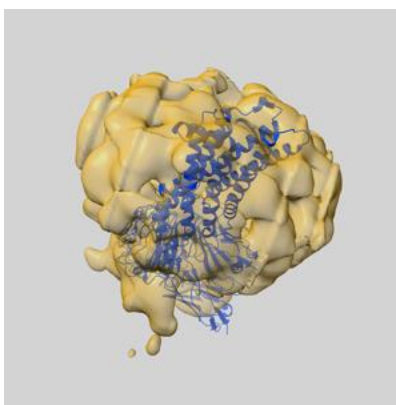
9 Map-model fit [i](#)

This section contains information regarding the fit between EMDB map EMD-33493 and PDB model 7XW7. Per-residue inclusion information can be found in [section 3](#) on [page 6](#).

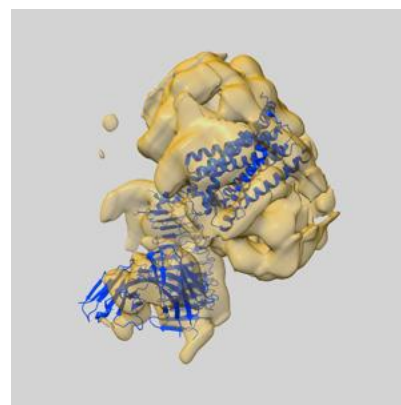
9.1 Map-model overlay [i](#)



X



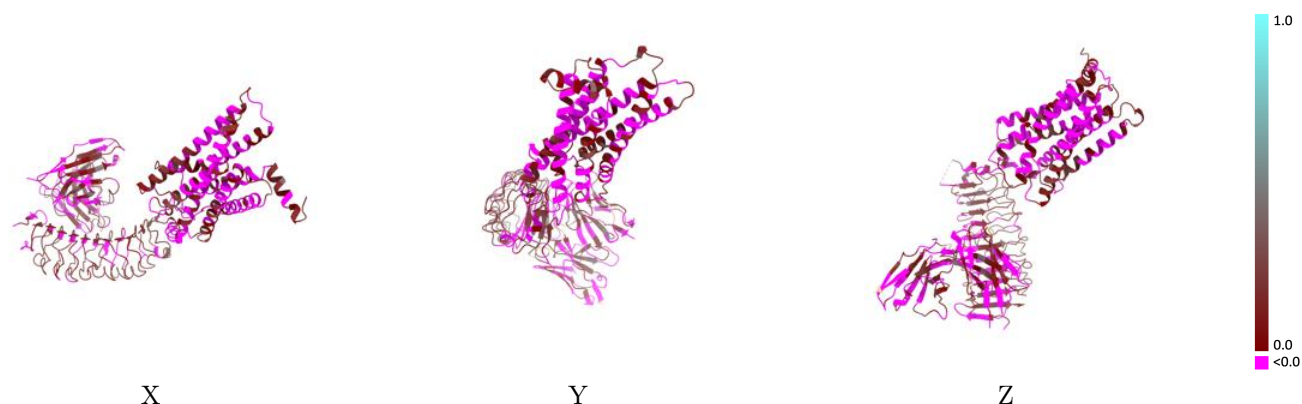
Y



Z

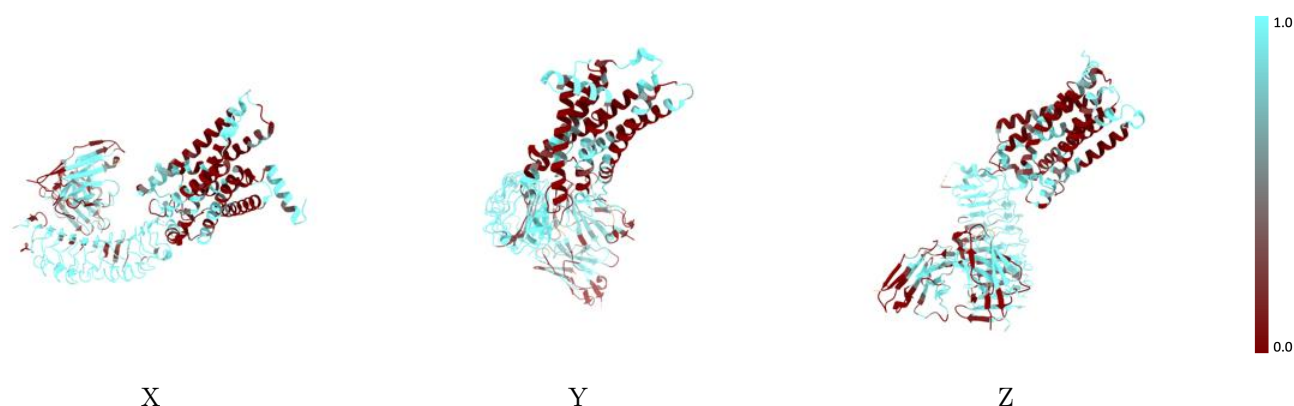
The images above show the 3D surface view of the map at the recommended contour level 0.1 at 50% transparency in yellow overlaid with a ribbon representation of the model coloured in blue. These images allow for the visual assessment of the quality of fit between the atomic model and the map.

9.2 Q-score mapped to coordinate model [i](#)



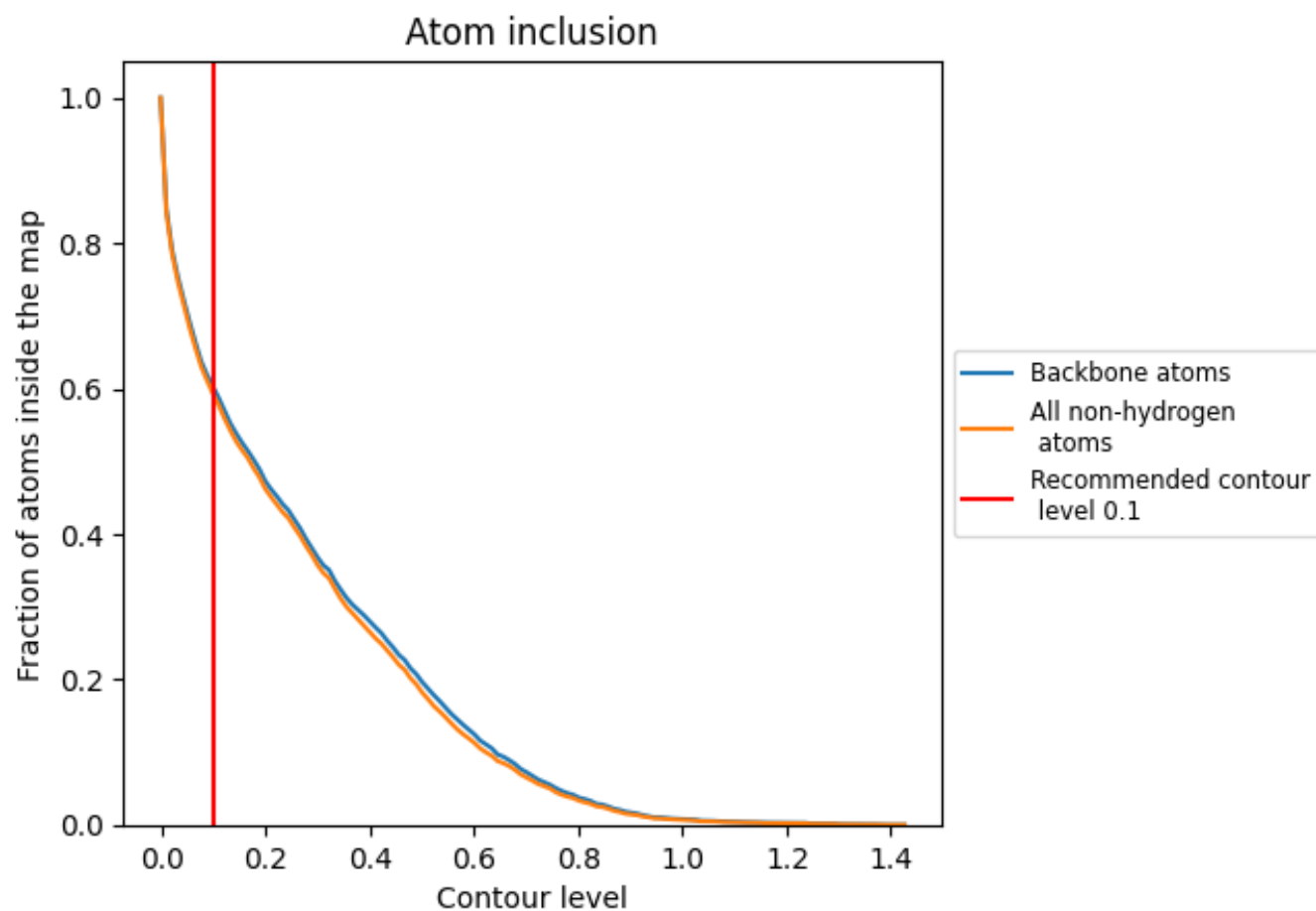
The images above show the model with each residue coloured according to its Q-score. This shows their resolvability in the map with higher Q-score values reflecting better resolvability. Please note: Q-score is calculating the resolvability of atoms, and thus high values are only expected at resolutions at which atoms can be resolved. Low Q-score values may therefore be expected for many entries.

9.3 Atom inclusion mapped to coordinate model [i](#)



The images above show the model with each residue coloured according to its atom inclusion. This shows to what extent they are inside the map at the recommended contour level (0.1).

9.4 Atom inclusion [i](#)



At the recommended contour level, 60% of all backbone atoms, 59% of all non-hydrogen atoms, are inside the map.

9.5 Map-model fit summary ⓘ

The table lists the average atom inclusion at the recommended contour level (0.1) and Q-score for the entire model and for each chain.

Chain	Atom inclusion	Q-score
All	<div></div> 0.5904	<div></div> 0.0400
A	<div></div> 0.5294	<div></div> 0.0120
B	<div></div> 0.5254	<div></div> 0.0190
R	<div></div> 0.6151	<div></div> 0.0500

