



# wwPDB X-ray Structure Validation Summary Report ⓘ

Aug 8, 2020 – 05:27 AM BST

PDB ID : 1XZW  
Title : Sweet potato purple acid phosphatase/phosphate complex  
Authors : Schenk, G.; Carrington, L.E.; Gahan, L.R.; Hamilton, S.E.; de Jersey, J.;  
Guddat, L.W.  
Deposited on : 2004-11-12  
Resolution : 2.50 Å(reported)

This is a wwPDB X-ray Structure Validation Summary Report for a publicly released PDB entry.

We welcome your comments at [validation@mail.wwpdb.org](mailto:validation@mail.wwpdb.org)

A user guide is available at

<https://www.wwpdb.org/validation/2017/XrayValidationReportHelp>

with specific help available everywhere you see the ⓘ symbol.

---

The following versions of software and data (see [references ⓘ](#)) were used in the production of this report:

MolProbity : 4.02b-467  
Mogul : 1.8.5 (274361), CSD as541be (2020)  
Xtriage (Phenix) : 1.13  
EDS : 2.13.1  
Percentile statistics : 20191225.v01 (using entries in the PDB archive December 25th 2019)  
Refmac : 5.8.0158  
CCP4 : 7.0.044 (Gargrove)  
Ideal geometry (proteins) : Engh & Huber (2001)  
Ideal geometry (DNA, RNA) : Parkinson et al. (1996)  
Validation Pipeline (wwPDB-VP) : 2.13.1

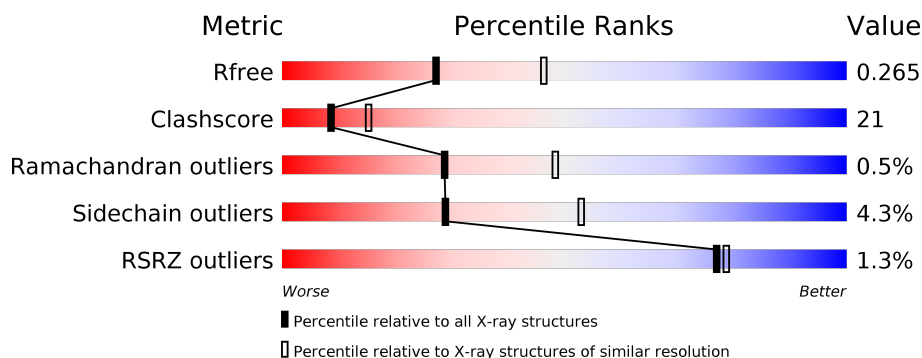
# 1 Overall quality at a glance

The following experimental techniques were used to determine the structure:

*X-RAY DIFFRACTION*

The reported resolution of this entry is 2.50 Å.

Percentile scores (ranging between 0-100) for global validation metrics of the entry are shown in the following graphic. The table shows the number of entries on which the scores are based.






Metric	Whole archive (#Entries)	Similar resolution (#Entries, resolution range(Å))
$R_{free}$	130704	4661 (2.50-2.50)
Clashscore	141614	5346 (2.50-2.50)
Ramachandran outliers	138981	5231 (2.50-2.50)
Sidechain outliers	138945	5233 (2.50-2.50)
RSRZ outliers	127900	4559 (2.50-2.50)

The table below summarises the geometric issues observed across the polymeric chains and their fit to the electron density. The red, orange, yellow and green segments on the lower bar indicate the fraction of residues that contain outliers for  $\geq 3$ , 2, 1 and 0 types of geometric quality criteria respectively. A grey segment represents the fraction of residues that are not modelled. The numeric value for each fraction is indicated below the corresponding segment, with a dot representing fractions  $\leq 5\%$ . The upper red bar (where present) indicates the fraction of residues that have poor fit to the electron density. The numeric value is given above the bar.

Mol	Chain	Length	Quality of chain
1	A	426	<div> <div>%</div> <div> <div></div> <div>66%</div> <div>31%</div> <div>.</div> </div> </div>
1	B	426	<div> <div>%</div> <div> <div></div> <div>67%</div> <div>30%</div> <div>.</div> </div> </div>
2	C	4	<div> <div></div> <div>50%</div> <div>50%</div> </div>
2	H	4	<div> <div></div> <div>50%</div> <div>50%</div> </div>
3	D	2	<div> <div></div> <div>100%</div> </div>
4	E	2	<div> <div></div> <div>100%</div> </div>

*Continued on next page...*

*Continued from previous page...*

Mol	Chain	Length	Quality of chain
4	F	2	 100%
5	G	3	 33% 67%
5	I	3	 33% 67%

The following table lists non-polymeric compounds, carbohydrate monomers and non-standard residues in protein, DNA, RNA chains that are outliers for geometric or electron-density-fit criteria:

Mol	Type	Chain	Res	Chirality	Geometry	Clashes	Electron density
2	NAG	C	1	X	-	-	-
2	NAG	C	2	X	-	-	-
2	MAN	C	3	X	-	-	-
2	FUC	C	4	-	-	X	-
2	NAG	H	1	X	-	-	-
2	NAG	H	2	X	-	-	-
2	MAN	H	3	X	-	-	-
2	FUC	H	4	X	-	-	-
4	FUC	E	2	X	-	-	-
4	FUC	F	2	X	-	-	-
5	FUC	I	2	X	-	X	-

## 2 Entry composition [i](#)

There are 10 unique types of molecules in this entry. The entry contains 7368 atoms, of which 0 are hydrogens and 0 are deuteriums.

In the tables below, the ZeroOcc column contains the number of atoms modelled with zero occupancy, the AltConf column contains the number of residues with at least one atom in alternate conformation and the Trace column contains the number of residues modelled with at most 2 atoms.

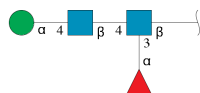
- Molecule 1 is a protein called purple acid phosphatase.

Mol	Chain	Residues	Atoms					ZeroOcc	AltConf	Trace
1	A	424	Total	C	N	O	S	0	0	0
			3442	2211	577	646	8			
1	B	426	Total	C	N	O	S	0	0	0
			3457	2220	580	649	8			

There are 2 discrepancies between the modelled and reference sequences:

Chain	Residue	Modelled	Actual	Comment	Reference
A	57	PHE	VAL	SEE REMARK 999	GB 6635441
B	557	PHE	VAL	SEE REMARK 999	GB 6635441

- Molecule 2 is an oligosaccharide called alpha-D-mannopyranose-(1-4)-2-acetamido-2-deoxy-beta-D-glucopyranose-(1-4)-[alpha-L-fucopyranose-(1-3)]2-acetamido-2-deoxy-beta-D-glucopyranose.



Mol	Chain	Residues	Atoms				ZeroOcc	AltConf	Trace
2	C	4	Total	C	N	O	0	0	0
			49	28	2	19			
2	H	4	Total	C	N	O	0	0	0
			49	28	2	19			

- Molecule 3 is an oligosaccharide called 2-acetamido-2-deoxy-beta-D-glucopyranose-(1-4)-2-acetamido-2-deoxy-beta-D-glucopyranose.



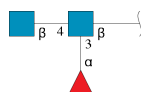
Mol	Chain	Residues	Atoms				ZeroOcc	AltConf	Trace
3	D	2	Total	C	N	O	0	0	0
			28	16	2	10			

- Molecule 4 is an oligosaccharide called alpha-L-fucopyranose-(1-3)-2-acetamido-2-deoxy-beta-D-glucopyranose.



Mol	Chain	Residues	Atoms				ZeroOcc	AltConf	Trace
4	E	2	Total	C	N	O	0	0	0
			24	14	1	9			
4	F	2	Total	C	N	O	0	0	0
			24	14	1	9			

- Molecule 5 is an oligosaccharide called alpha-L-fucopyranose-(1-3)-[2-acetamido-2-deoxy-beta-D-glucopyranose-(1-4)]2-acetamido-2-deoxy-beta-D-glucopyranose.



Mol	Chain	Residues	Atoms				ZeroOcc	AltConf	Trace
5	G	3	Total	C	N	O	0	0	0
			38	22	2	14			
5	I	3	Total	C	N	O	0	0	0
			38	22	2	14			

- Molecule 6 is FE (III) ION (three-letter code: FE) (formula: Fe).

Mol	Chain	Residues	Atoms		ZeroOcc	AltConf
6	B	1	Total	Fe	0	0
			1	1		
6	A	1	Total	Fe	0	0
			1	1		

- Molecule 7 is MANGANESE (II) ION (three-letter code: MN) (formula: Mn).

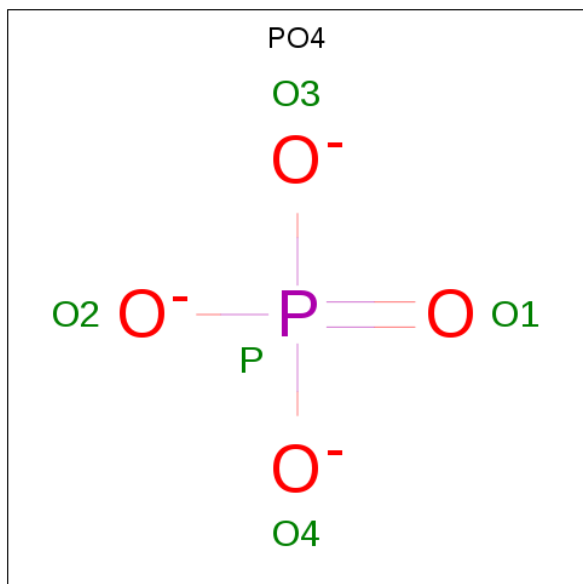
Mol	Chain	Residues	Atoms		ZeroOcc	AltConf
7	B	1	Total	Mn	0	0
			1	1		

*Continued on next page...*

*Continued from previous page...*

Mol	Chain	Residues	Atoms		ZeroOcc	AltConf
7	A	1	Total	Mn	0	0
			1	1		

- Molecule 8 is PHOSPHATE ION (three-letter code: PO4) (formula: O<sub>4</sub>P).



Mol	Chain	Residues	Atoms			ZeroOcc	AltConf
8	A	1	Total	O	P	0	0
			5	4	1		
8	A	1	Total	O	P	0	0
			5	4	1		
8	B	1	Total	O	P	0	0
			5	4	1		
8	B	1	Total	O	P	0	0
			5	4	1		

- Molecule 9 is 2-acetamido-2-deoxy-beta-D-glucopyranose (three-letter code: NAG) (formula: C<sub>8</sub>H<sub>15</sub>NO<sub>6</sub>).



Mol	Chain	Residues	Atoms				ZeroOcc	AltConf
9	B	1	Total	C	N	O	0	0
			14	8	1	5		

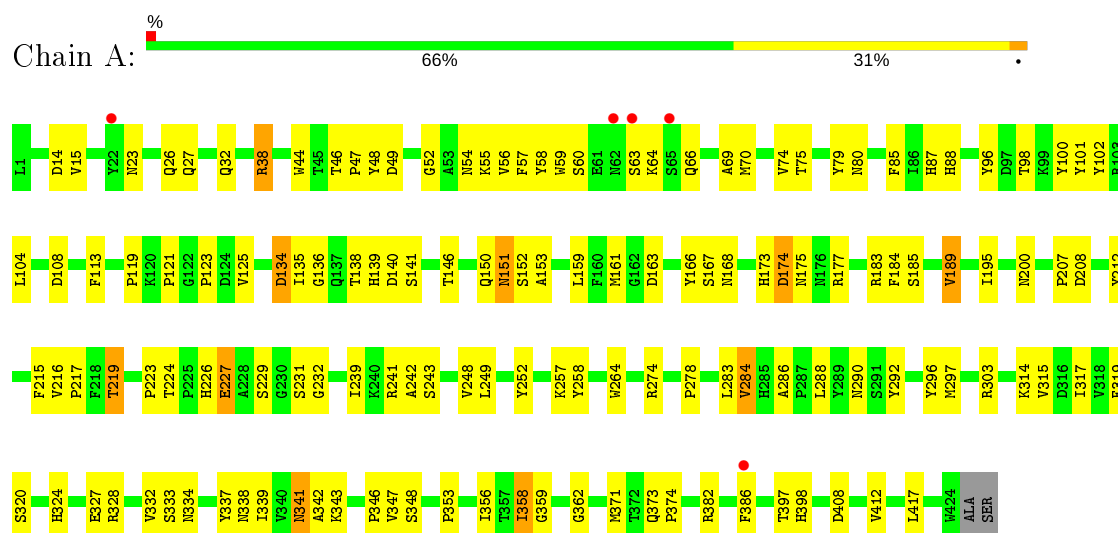
- Molecule 10 is water.

Mol	Chain	Residues	Atoms		ZeroOcc	AltConf
10	A	81	Total	O	0	0
			81	81		
10	B	100	Total	O	0	0
			100	100		

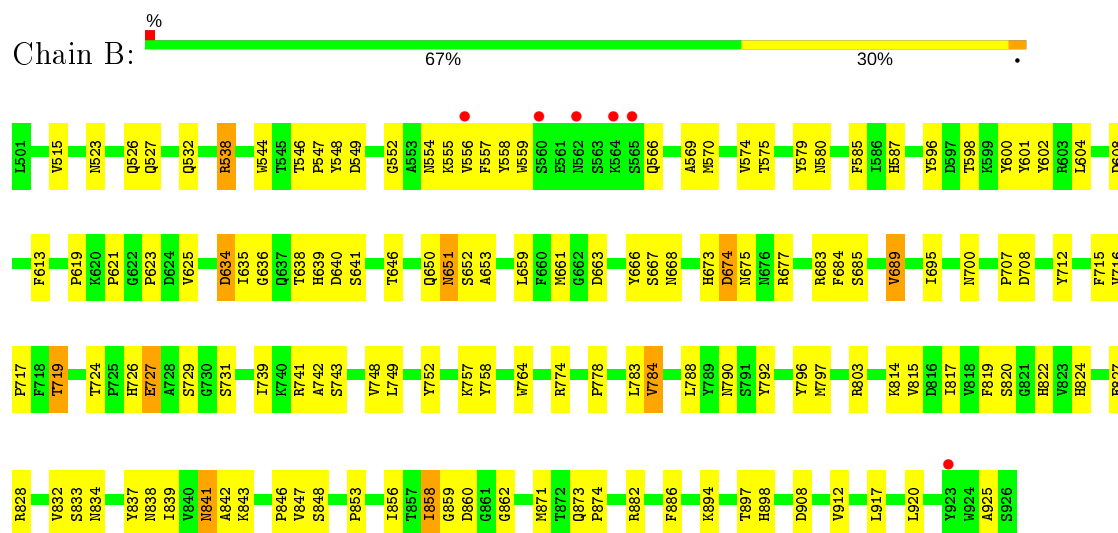
### 3 Residue-property plots

These plots are drawn for all protein, RNA, DNA and oligosaccharide chains in the entry. The first graphic for a chain summarises the proportions of the various outlier classes displayed in the second graphic. The second graphic shows the sequence view annotated by issues in geometry and electron density. Residues are color-coded according to the number of geometric quality criteria for which they contain at least one outlier: green = 0, yellow = 1, orange = 2 and red = 3 or more. A red dot above a residue indicates a poor fit to the electron density ( $RSRZ > 2$ ). Stretches of 2 or more consecutive residues without any outlier are shown as a green connector. Residues present in the sample, but not in the model, are shown in grey.

- Molecule 1: purple acid phosphatase



- Molecule 1: purple acid phosphatase



- Molecule 2: alpha-D-mannopyranose-(1-4)-2-acetamido-2-deoxy-beta-D-glucopyranose-(1-4)-[alpha-L-fucopyranose-(1-3)]2-acetamido-2-deoxy-beta-D-glucopyranose







- Molecule 2: alpha-D-mannopyranose-(1-4)-2-acetamido-2-deoxy-beta-D-glucopyranose-(1-4)-[alpha-L-fucopyranose-(1-3)]2-acetamido-2-deoxy-beta-D-glucopyranose

Chain H:



- Molecule 3: 2-acetamido-2-deoxy-beta-D-glucopyranose-(1-4)-2-acetamido-2-deoxy-beta-D-glucopyranose

Chain D:



- Molecule 4: alpha-L-fucopyranose-(1-3)-2-acetamido-2-deoxy-beta-D-glucopyranose

Chain E:



- Molecule 4: alpha-L-fucopyranose-(1-3)-2-acetamido-2-deoxy-beta-D-glucopyranose

Chain F:



- Molecule 5: alpha-L-fucopyranose-(1-3)-[2-acetamido-2-deoxy-beta-D-glucopyranose-(1-4)]2-acetamido-2-deoxy-beta-D-glucopyranose

Chain G:



- Molecule 5: alpha-L-fucopyranose-(1-3)-[2-acetamido-2-deoxy-beta-D-glucopyranose-(1-4)]2-acetamido-2-deoxy-beta-D-glucopyranose

Chain I:



## 4 Data and refinement statistics

Property	Value	Source
Space group	P 65 2 2	Depositor
Cell constants a, b, c, $\alpha$ , $\beta$ , $\gamma$	116.15Å 116.15Å 291.95Å 90.00° 90.00° 120.00°	Depositor
Resolution (Å)	95.10 – 2.50 95.10 – 2.50	Depositor EDS
% Data completeness (in resolution range)	88.1 (95.10-2.50) 88.0 (95.10-2.50)	Depositor EDS
$R_{merge}$	0.07	Depositor
$R_{sym}$	0.07	Depositor
$\langle I/\sigma(I) \rangle$ <sup>1</sup>	1.52 (at 2.48Å)	Xtriage
Refinement program	X-PLOR 3.843	Depositor
R, $R_{free}$	0.238 , 0.264 0.233 , 0.265	Depositor DCC
$R_{free}$ test set	3729 reflections (10.03%)	wwPDB-VP
Wilson B-factor (Å <sup>2</sup> )	42.4	Xtriage
Anisotropy	0.263	Xtriage
Bulk solvent $k_{sol}$ (e/Å <sup>3</sup> ), $B_{sol}$ (Å <sup>2</sup> )	0.36 , 38.3	EDS
L-test for twinning <sup>2</sup>	$\langle  L  \rangle = 0.45$ , $\langle L^2 \rangle = 0.27$	Xtriage
Estimated twinning fraction	No twinning to report.	Xtriage
$F_o, F_c$ correlation	0.92	EDS
Total number of atoms	7368	wwPDB-VP
Average B, all atoms (Å <sup>2</sup> )	41.0	wwPDB-VP

Xtriage's analysis on translational NCS is as follows: *The largest off-origin peak in the Patterson function is 3.64% of the height of the origin peak. No significant pseudotranslation is detected.*

<sup>1</sup>Intensities estimated from amplitudes.

<sup>2</sup>Theoretical values of  $\langle |L| \rangle$ ,  $\langle L^2 \rangle$  for acentric reflections are 0.5, 0.333 respectively for untwinned datasets, and 0.375, 0.2 for perfectly twinned datasets.

## 5 Model quality [i](#)

### 5.1 Standard geometry [i](#)

Bond lengths and bond angles in the following residue types are not validated in this section: NAG, PO4, MN, FUC, FE, MAN

The Z score for a bond length (or angle) is the number of standard deviations the observed value is removed from the expected value. A bond length (or angle) with  $|Z| > 5$  is considered an outlier worth inspection. RMSZ is the root-mean-square of all Z scores of the bond lengths (or angles).

Mol	Chain	Bond lengths		Bond angles	
		RMSZ	# Z  >5	RMSZ	# Z  >5
1	A	0.41	0/3568	0.64	0/4876
1	B	0.40	0/3583	0.64	0/4895
All	All	0.41	0/7151	0.64	0/9771

There are no bond length outliers.

There are no bond angle outliers.

There are no chirality outliers.

There are no planarity outliers.

### 5.2 Too-close contacts [i](#)

In the following table, the Non-H and H(model) columns list the number of non-hydrogen atoms and hydrogen atoms in the chain respectively. The H(added) column lists the number of hydrogen atoms added and optimized by MolProbity. The Clashes column lists the number of clashes within the asymmetric unit, whereas Symm-Clashes lists symmetry related clashes.

Mol	Chain	Non-H	H(model)	H(added)	Clashes	Symm-Clashes
1	A	3442	0	3149	133	0
1	B	3457	0	3167	134	0
2	C	49	0	43	8	0
2	H	49	0	43	7	0
3	D	28	0	25	2	0
4	E	24	0	22	0	0
4	F	24	0	22	2	0
5	G	38	0	34	3	0
5	I	38	0	34	8	0
6	A	1	0	0	0	0
6	B	1	0	0	0	0

*Continued on next page...*

*Continued from previous page...*

Mol	Chain	Non-H	H(model)	H(added)	Clashes	Symm-Clashes
7	A	1	0	0	0	0
7	B	1	0	0	0	0
8	A	10	0	0	0	0
8	B	10	0	0	1	0
9	B	14	0	13	0	0
10	A	81	0	0	2	0
10	B	100	0	0	1	0
All	All	7368	0	6552	283	0

The all-atom clashscore is defined as the number of clashes found per 1000 atoms (including hydrogen atoms). The all-atom clashscore for this structure is 21.

The worst 5 of 283 close contacts within the same asymmetric unit are listed below, sorted by their clash magnitude.

Atom-1	Atom-2	Interatomic distance (Å)	Clash overlap (Å)
2:C:2:NAG:H4	2:C:4:FUC:H61	1.23	1.14
1:B:638:THR:HG23	1:B:640:ASP:H	1.34	0.91
1:A:23:ASN:HD21	1:A:48:TYR:H	1.16	0.91
1:A:138:THR:HG23	1:A:140:ASP:H	1.37	0.89
1:B:523:ASN:HD22	1:B:547:PRO:HG2	1.38	0.88

There are no symmetry-related clashes.

## 5.3 Torsion angles [i](#)

### 5.3.1 Protein backbone [i](#)

In the following table, the Percentiles column shows the percent Ramachandran outliers of the chain as a percentile score with respect to all X-ray entries followed by that with respect to entries of similar resolution.

The Analysed column shows the number of residues for which the backbone conformation was analysed, and the total number of residues.

Mol	Chain	Analysed	Favoured	Allowed	Outliers	Percentiles	
1	A	422/426 (99%)	392 (93%)	27 (6%)	3 (1%)	22	39
1	B	424/426 (100%)	398 (94%)	25 (6%)	1 (0%)	47	68
All	All	846/852 (99%)	790 (93%)	52 (6%)	4 (0%)	29	48

All (4) Ramachandran outliers are listed below:

Mol	Chain	Res	Type
1	B	674	ASP
1	A	174	ASP
1	A	63	SER
1	A	64	LYS

### 5.3.2 Protein sidechains ⓘ

In the following table, the Percentiles column shows the percent sidechain outliers of the chain as a percentile score with respect to all X-ray entries followed by that with respect to entries of similar resolution.

The Analysed column shows the number of residues for which the sidechain conformation was analysed, and the total number of residues.

Mol	Chain	Analysed	Rotameric	Outliers	Percentiles	
1	A	360/366 (98%)	344 (96%)	16 (4%)	28	52
1	B	362/366 (99%)	347 (96%)	15 (4%)	30	55
All	All	722/732 (99%)	691 (96%)	31 (4%)	29	53

5 of 31 residues with a non-rotameric sidechain are listed below:

Mol	Chain	Res	Type
1	A	371	MET
1	B	608	ASP
1	B	858	ILE
1	A	382	ARG
1	B	634	ASP

Some sidechains can be flipped to improve hydrogen bonding and reduce clashes. 5 of 25 such sidechains are listed below:

Mol	Chain	Res	Type
1	A	388	HIS
1	B	526	GLN
1	B	841	ASN
1	B	523	ASN
1	B	529	HIS

### 5.3.3 RNA ⓘ

There are no RNA molecules in this entry.

## 5.4 Non-standard residues in protein, DNA, RNA chains ⓘ

There are no non-standard protein/DNA/RNA residues in this entry.

## 5.5 Carbohydrates ⓘ

20 monosaccharides are modelled in this entry.

In the following table, the Counts columns list the number of bonds (or angles) for which Mogul statistics could be retrieved, the number of bonds (or angles) that are observed in the model and the number of bonds (or angles) that are defined in the Chemical Component Dictionary. The Link column lists molecule types, if any, to which the group is linked. The Z score for a bond length (or angle) is the number of standard deviations the observed value is removed from the expected value. A bond length (or angle) with  $|Z| > 2$  is considered an outlier worth inspection. RMSZ is the root-mean-square of all Z scores of the bond lengths (or angles).

Mol	Type	Chain	Res	Link	Bond lengths			Bond angles		
					Counts	RMSZ	# $ Z  > 2$	Counts	RMSZ	# $ Z  > 2$
2	NAG	C	1	1,2	14,14,15	1.06	2 (14%)	17,19,21	0.76	0
2	NAG	C	2	2	14,14,15	0.92	1 (7%)	17,19,21	1.06	2 (11%)
2	MAN	C	3	2	11,11,12	0.78	0	15,15,17	1.18	1 (6%)
2	FUC	C	4	2	10,10,11	0.48	0	14,14,16	0.62	0
3	NAG	D	1	1,3	14,14,15	0.62	0	17,19,21	0.72	0
3	NAG	D	2	3	14,14,15	0.54	0	17,19,21	0.62	0
4	NAG	E	1	1,4	14,14,15	0.53	0	17,19,21	0.75	0
4	FUC	E	2	4	10,10,11	0.66	0	14,14,16	0.49	0
4	NAG	F	1	1,4	14,14,15	0.47	0	17,19,21	0.84	1 (5%)
4	FUC	F	2	4	10,10,11	0.71	0	14,14,16	1.06	1 (7%)
5	NAG	G	1	1,5	14,14,15	0.59	0	17,19,21	0.85	1 (5%)
5	FUC	G	2	5	10,10,11	0.55	0	14,14,16	0.51	0
5	NAG	G	3	5	14,14,15	0.59	0	17,19,21	0.91	1 (5%)
2	NAG	H	1	1,2	14,14,15	0.90	1 (7%)	17,19,21	1.62	3 (17%)
2	NAG	H	2	2	14,14,15	0.70	0	17,19,21	1.08	2 (11%)
2	MAN	H	3	2	11,11,12	0.68	0	15,15,17	0.42	0
2	FUC	H	4	2	10,10,11	0.60	0	14,14,16	1.15	2 (14%)
5	NAG	I	1	1,5	14,14,15	0.67	0	17,19,21	1.02	1 (5%)
5	FUC	I	2	5	10,10,11	0.60	0	14,14,16	0.62	0
5	NAG	I	3	5	14,14,15	0.69	0	17,19,21	0.87	2 (11%)

In the following table, the Chirals column lists the number of chiral outliers, the number of chiral centers analysed, the number of these observed in the model and the number defined in the Chemical Component Dictionary. Similar counts are reported in the Torsion and Rings columns.

'-' means no outliers of that kind were identified.

Mol	Type	Chain	Res	Link	Chirals	Torsions	Rings
2	NAG	C	1	1,2	1/1/5/7	5/6/23/26	0/1/1/1
2	NAG	C	2	2	1/1/5/7	4/6/23/26	0/1/1/1
2	MAN	C	3	2	1/1/4/5	2/2/19/22	0/1/1/1
2	FUC	C	4	2	-	-	0/1/1/1
3	NAG	D	1	1,3	-	2/6/23/26	0/1/1/1
3	NAG	D	2	3	-	0/6/23/26	0/1/1/1
4	NAG	E	1	1,4	-	2/6/23/26	0/1/1/1
4	FUC	E	2	4	1/1/4/5	-	0/1/1/1
4	NAG	F	1	1,4	-	2/6/23/26	0/1/1/1
4	FUC	F	2	4	1/1/4/5	-	0/1/1/1
5	NAG	G	1	1,5	-	4/6/23/26	0/1/1/1
5	FUC	G	2	5	-	-	0/1/1/1
5	NAG	G	3	5	-	4/6/23/26	0/1/1/1
2	NAG	H	1	1,2	1/1/5/7	4/6/23/26	0/1/1/1
2	NAG	H	2	2	1/1/5/7	3/6/23/26	0/1/1/1
2	MAN	H	3	2	1/1/4/5	2/2/19/22	0/1/1/1
2	FUC	H	4	2	1/1/4/5	-	0/1/1/1
5	NAG	I	1	1,5	-	2/6/23/26	0/1/1/1
5	FUC	I	2	5	1/1/4/5	-	0/1/1/1
5	NAG	I	3	5	-	4/6/23/26	0/1/1/1

All (4) bond length outliers are listed below:

Mol	Chain	Res	Type	Atoms	Z	Observed(Å)	Ideal(Å)
2	C	1	NAG	C3-C2	2.44	1.57	1.52
2	C	2	NAG	C1-C2	2.16	1.55	1.52
2	H	1	NAG	O5-C5	2.04	1.47	1.43
2	C	1	NAG	C1-C2	2.03	1.55	1.52

The worst 5 of 17 bond angle outliers are listed below:

Mol	Chain	Res	Type	Atoms	Z	Observed(°)	Ideal(°)
2	H	1	NAG	C4-C3-C2	-4.92	103.81	111.02
2	C	3	MAN	C1-C2-C3	4.09	114.69	109.67
4	F	2	FUC	C3-C4-C5	3.00	114.45	109.77
2	H	4	FUC	C1-C2-C3	2.90	113.22	109.67
2	H	2	NAG	C1-O5-C5	2.71	115.86	112.19

5 of 10 chirality outliers are listed below:

Mol	Chain	Res	Type	Atom
2	H	4	FUC	C1
2	H	1	NAG	C1
4	F	2	FUC	C1
4	E	2	FUC	C1
2	H	2	NAG	C1

5 of 40 torsion outliers are listed below:

Mol	Chain	Res	Type	Atoms
2	H	2	NAG	C8-C7-N2-C2
2	H	2	NAG	O7-C7-N2-C2
4	E	1	NAG	C8-C7-N2-C2
4	E	1	NAG	O7-C7-N2-C2
5	G	3	NAG	C8-C7-N2-C2

There are no ring outliers.

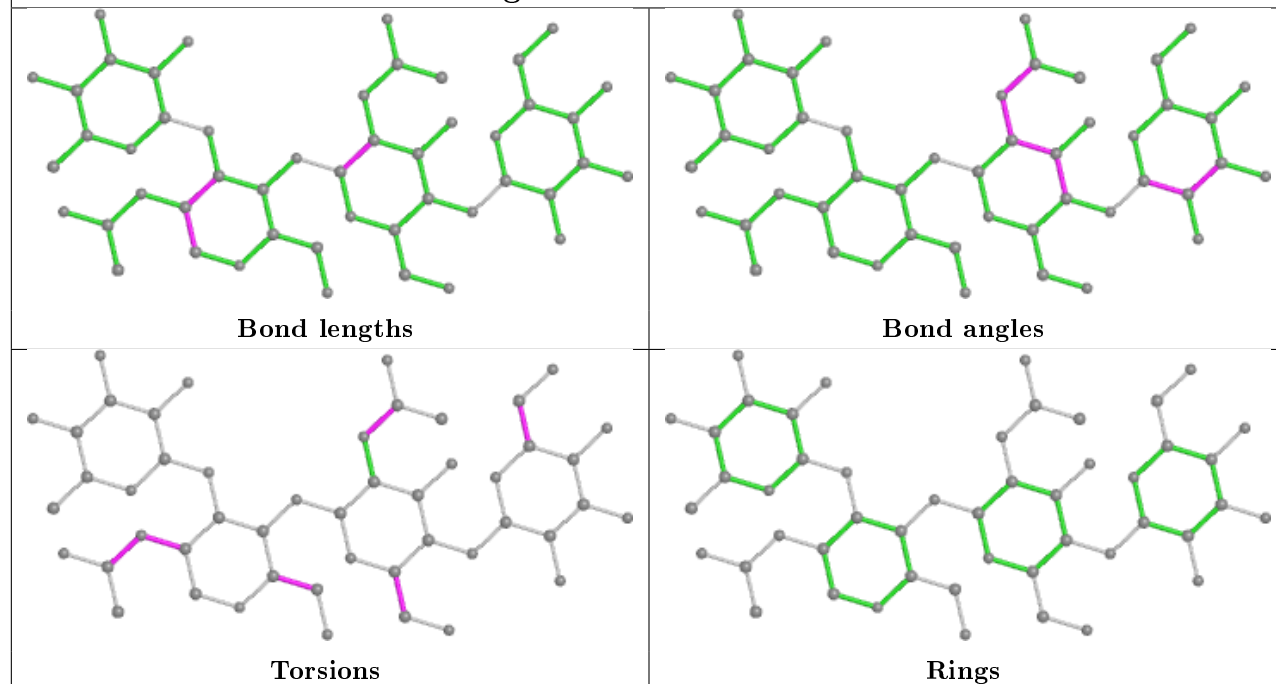
16 monomers are involved in 30 short contacts:

Mol	Chain	Res	Type	Clashes	Symm-Clashes
2	H	1	NAG	5	0
3	D	2	NAG	1	0
4	F	2	FUC	2	0
2	H	2	NAG	3	0
5	G	2	FUC	1	0
5	G	3	NAG	1	0
5	I	3	NAG	1	0
4	F	1	NAG	2	0
5	G	1	NAG	2	0
3	D	1	NAG	2	0
2	C	2	NAG	4	0
5	I	2	FUC	8	0
2	H	3	MAN	2	0
2	C	1	NAG	3	0
2	C	4	FUC	6	0
5	I	1	NAG	6	0

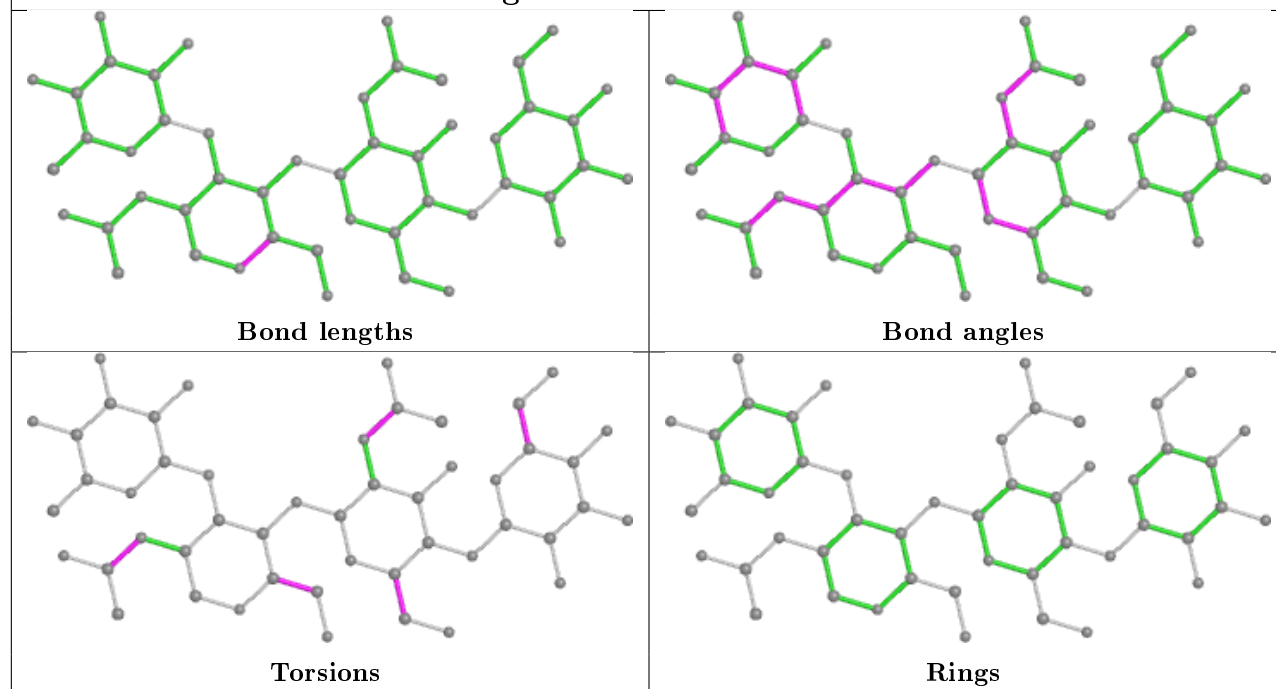
The following is a two-dimensional graphical depiction of Mogul quality analysis of bond lengths, bond angles, torsion angles, and ring geometry for oligosaccharide.

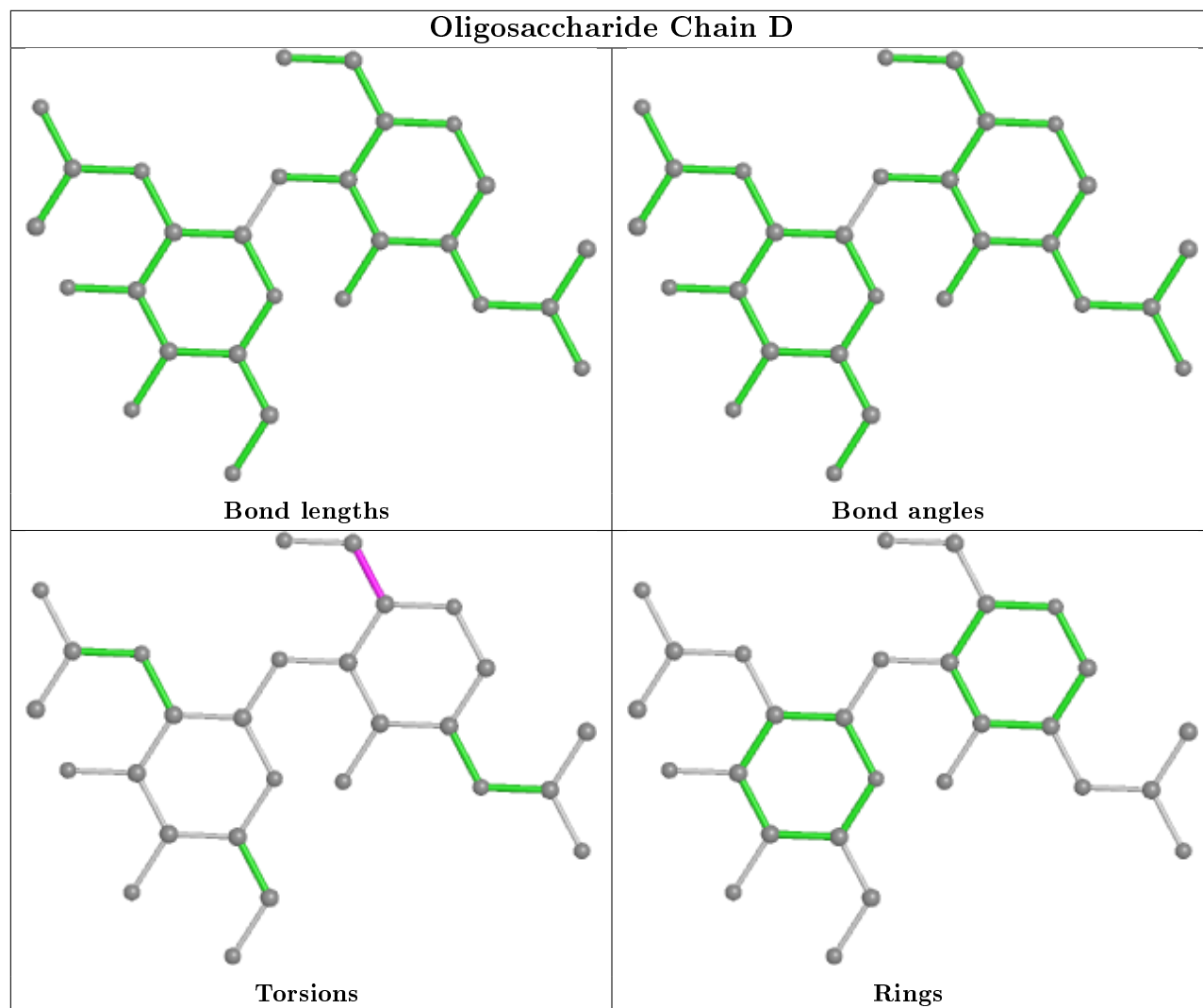


## Oligosaccharide Chain C

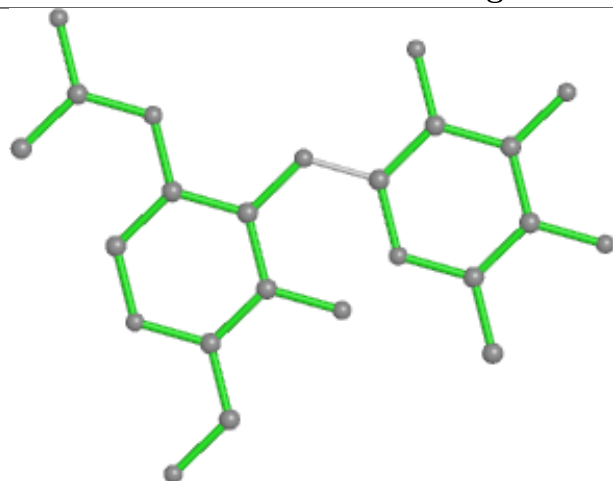


## Oligosaccharide Chain H

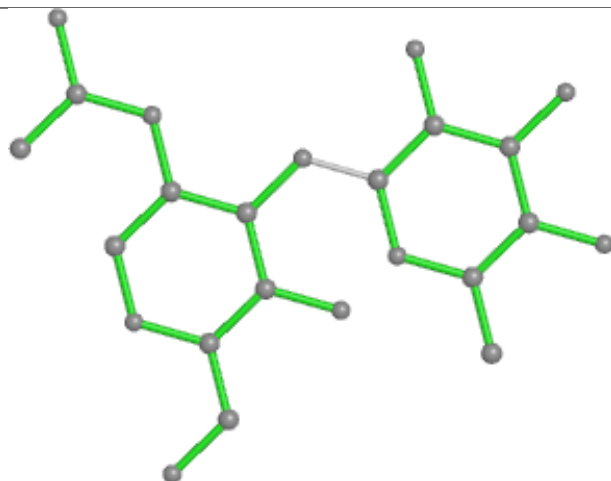




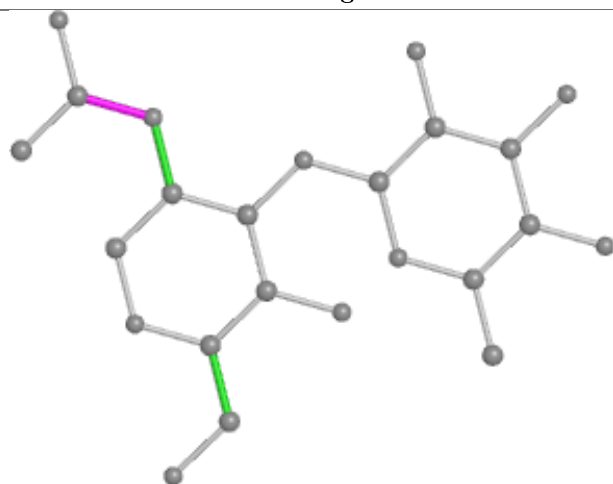
## Oligosaccharide Chain E



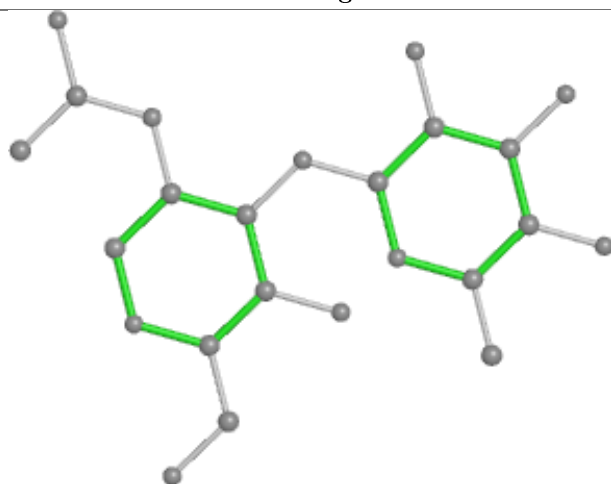
Bond lengths



Bond angles

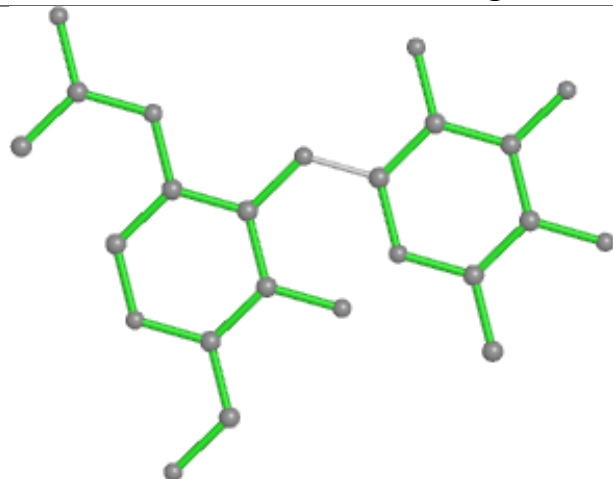


Torsions

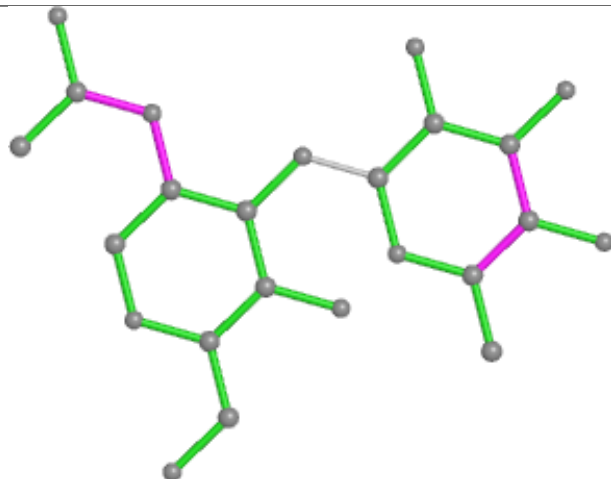


Rings

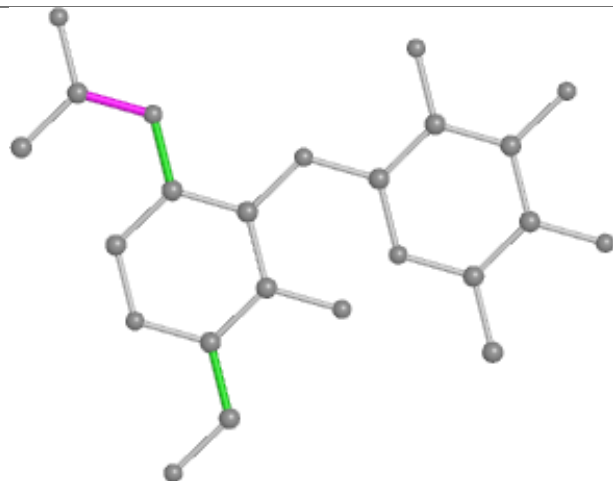
## Oligosaccharide Chain F



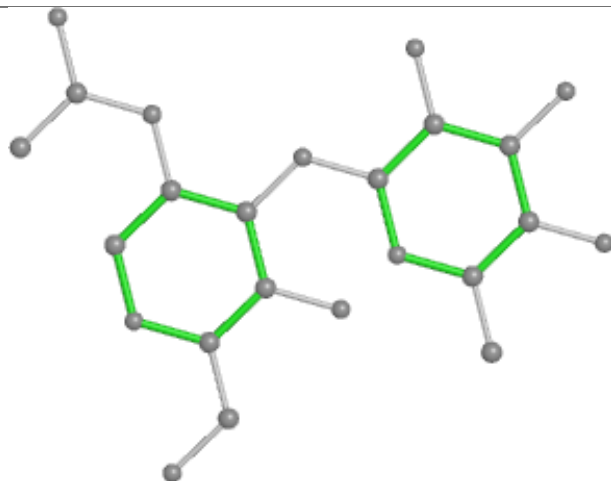
Bond lengths



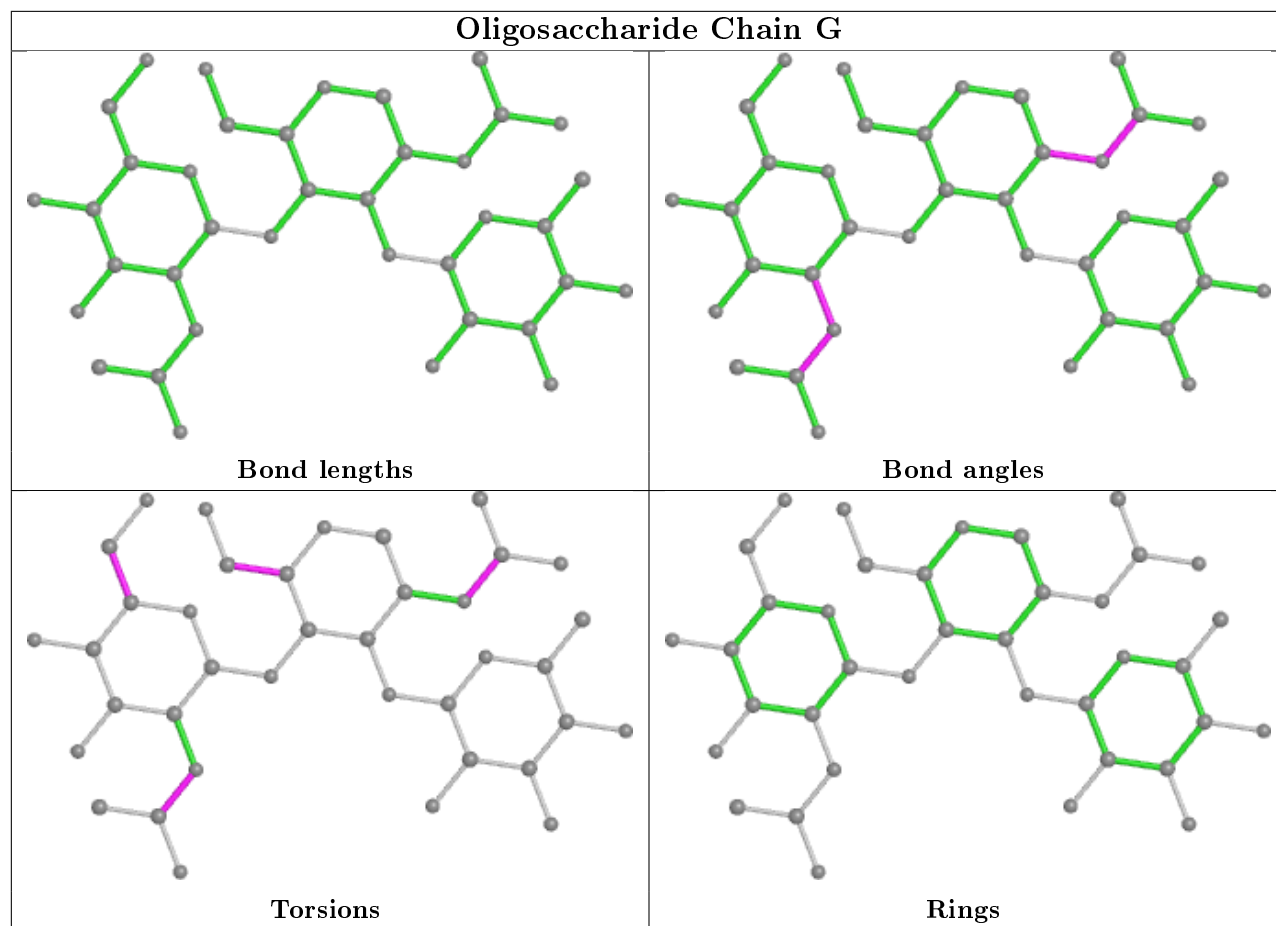
Bond angles

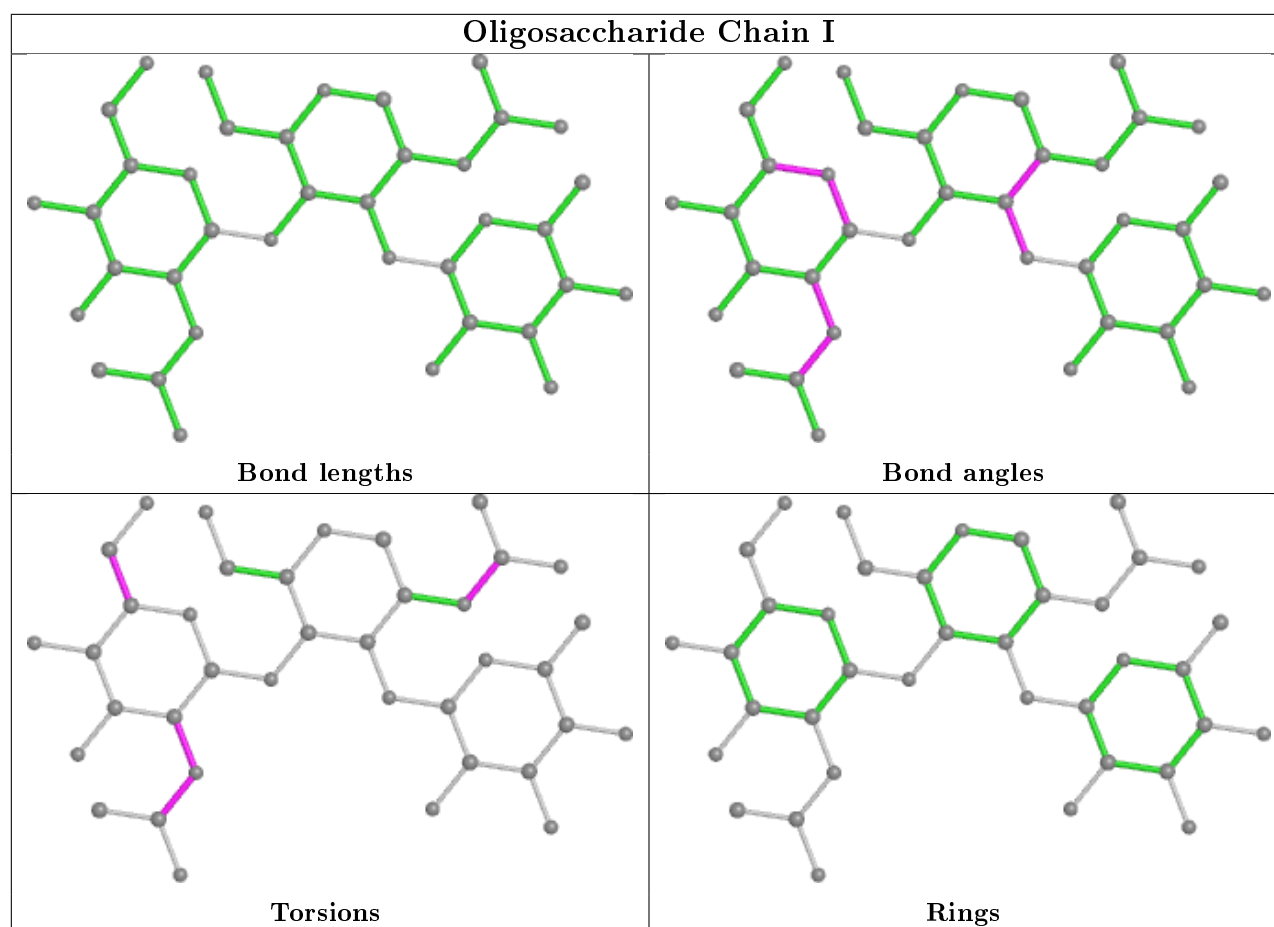


Torsions



Rings





## 5.6 Ligand geometry [i](#)

Of 9 ligands modelled in this entry, 4 are monoatomic - leaving 5 for Mogul analysis.

In the following table, the Counts columns list the number of bonds (or angles) for which Mogul statistics could be retrieved, the number of bonds (or angles) that are observed in the model and the number of bonds (or angles) that are defined in the Chemical Component Dictionary. The Link column lists molecule types, if any, to which the group is linked. The Z score for a bond length (or angle) is the number of standard deviations the observed value is removed from the expected value. A bond length (or angle) with  $|Z| > 2$  is considered an outlier worth inspection. RMSZ is the root-mean-square of all Z scores of the bond lengths (or angles).

Mol	Type	Chain	Res	Link	Bond lengths			Bond angles		
					Counts	RMSZ	$\# Z  > 2$	Counts	RMSZ	$\# Z  > 2$
8	PO4	A	451	-	4,4,4	1.26	0	6,6,6	0.37	0
8	PO4	B	450	-	4,4,4	1.20	0	6,6,6	0.25	0
9	NAG	B	934	1	14,14,15	0.66	0	17,19,21	0.67	0
8	PO4	A	431	7,6	4,4,4	1.77	1 (25%)	6,6,6	0.45	0
8	PO4	B	931	7,6	4,4,4	2.07	3 (75%)	6,6,6	0.38	0

In the following table, the Chirals column lists the number of chiral outliers, the number of chiral

centers analysed, the number of these observed in the model and the number defined in the Chemical Component Dictionary. Similar counts are reported in the Torsion and Rings columns. '-' means no outliers of that kind were identified.

Mol	Type	Chain	Res	Link	Chirals	Torsions	Rings
9	NAG	B	934	1	-	4/6/23/26	0/1/1/1

All (4) bond length outliers are listed below:

Mol	Chain	Res	Type	Atoms	Z	Observed(Å)	Ideal(Å)
8	B	931	PO4	P-O3	-2.52	1.47	1.54
8	B	931	PO4	P-O2	-2.11	1.48	1.54
8	A	431	PO4	P-O3	-2.01	1.48	1.54
8	B	931	PO4	P-O4	-2.00	1.48	1.54

There are no bond angle outliers.

There are no chirality outliers.

All (4) torsion outliers are listed below:

Mol	Chain	Res	Type	Atoms
9	B	934	NAG	C8-C7-N2-C2
9	B	934	NAG	O7-C7-N2-C2
9	B	934	NAG	O5-C5-C6-O6
9	B	934	NAG	C4-C5-C6-O6

There are no ring outliers.

1 monomer is involved in 1 short contact:

Mol	Chain	Res	Type	Clashes	Symm-Clashes
8	B	931	PO4	1	0

## 5.7 Other polymers [i](#)

There are no such residues in this entry.

## 5.8 Polymer linkage issues [i](#)

There are no chain breaks in this entry.

## 6 Fit of model and data [i](#)

### 6.1 Protein, DNA and RNA chains [i](#)

In the following table, the column labelled ‘#RSRZ> 2’ contains the number (and percentage) of RSRZ outliers, followed by percent RSRZ outliers for the chain as percentile scores relative to all X-ray entries and entries of similar resolution. The OWAB column contains the minimum, median, 95<sup>th</sup> percentile and maximum values of the occupancy-weighted average B-factor per residue. The column labelled ‘Q< 0.9’ lists the number of (and percentage) of residues with an average occupancy less than 0.9.

Mol	Chain	Analysed	<RSRZ>	#RSRZ>2	OWAB(Å <sup>2</sup> )	Q<0.9
1	A	424/426 (99%)	0.14	5 (1%) 79 80	27, 40, 55, 81	0
1	B	426/426 (100%)	0.26	6 (1%) 75 77	26, 38, 52, 78	0
All	All	850/852 (99%)	0.20	11 (1%) 77 79	26, 39, 54, 81	0

The worst 5 of 11 RSRZ outliers are listed below:

Mol	Chain	Res	Type	RSRZ
1	B	565	SER	6.4
1	A	62	ASN	4.2
1	A	22	TYR	3.1
1	A	65	SER	3.1
1	B	560	SER	2.5

### 6.2 Non-standard residues in protein, DNA, RNA chains [i](#)

There are no non-standard protein/DNA/RNA residues in this entry.

### 6.3 Carbohydrates [i](#)

In the following table, the Atoms column lists the number of modelled atoms in the group and the number defined in the chemical component dictionary. The B-factors column lists the minimum, median, 95<sup>th</sup> percentile and maximum values of B factors of atoms in the group. The column labelled ‘Q< 0.9’ lists the number of atoms with occupancy less than 0.9.

Mol	Type	Chain	Res	Atoms	RSCC	RSR	B-factors(Å <sup>2</sup> )	Q<0.9
2	MAN	C	3	11/12	0.67	0.31	97,99,100,100	0
2	MAN	H	3	11/12	0.68	0.18	63,65,66,67	0
2	NAG	C	1	14/15	0.68	0.27	77,81,88,91	0
5	FUC	I	2	10/11	0.69	0.28	78,80,81,81	0
5	FUC	G	2	10/11	0.72	0.30	84,86,87,88	0

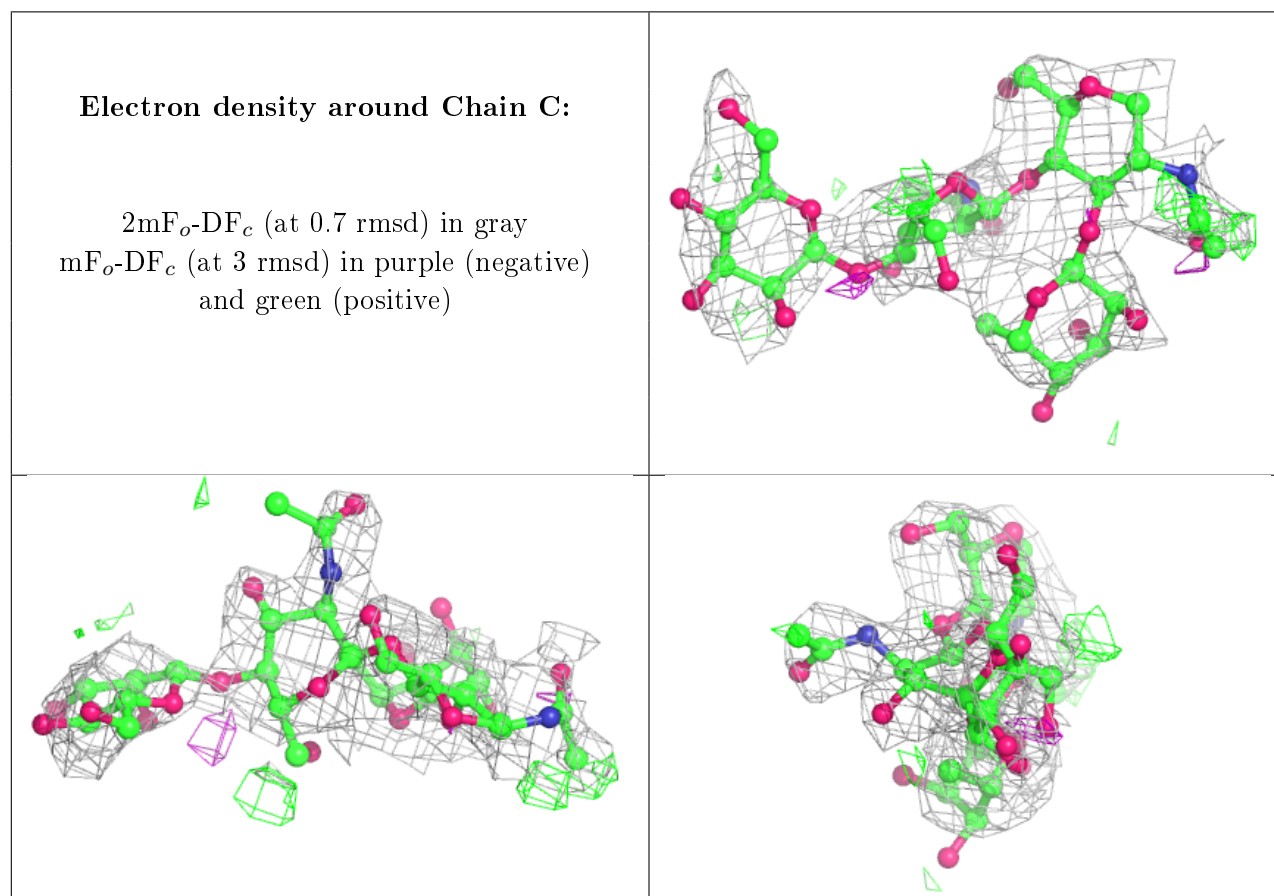
*Continued on next page...*



*Continued from previous page...*

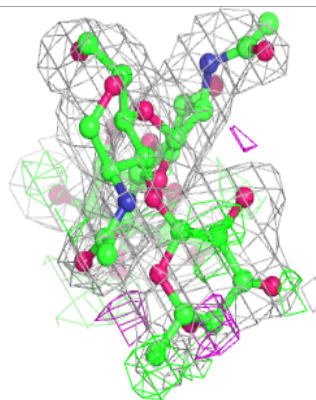
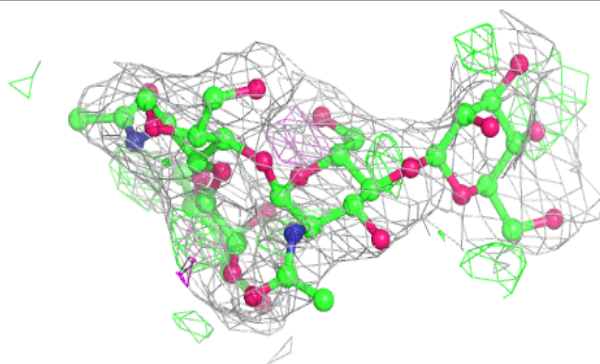
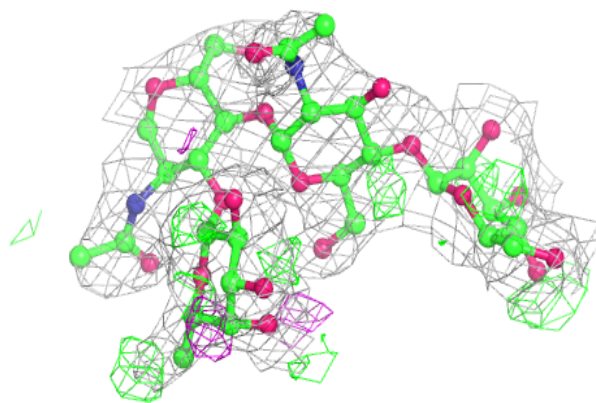
Mol	Type	Chain	Res	Atoms	RSCC	RSR	B-factors( $\text{\AA}^2$ )	Q<0.9
5	NAG	I	3	14/15	0.75	0.24	70,72,74,74	0
2	NAG	C	2	14/15	0.76	0.30	93,95,96,99	0
2	FUC	H	4	10/11	0.79	0.25	47,51,54,54	0
4	FUC	F	2	10/11	0.83	0.21	85,87,88,89	0
3	NAG	D	2	14/15	0.83	0.20	67,70,71,72	0
2	FUC	C	4	10/11	0.83	0.24	90,92,93,94	0
4	NAG	F	1	14/15	0.84	0.17	70,75,78,82	0
5	NAG	G	1	14/15	0.85	0.29	70,74,79,81	0
4	NAG	E	1	14/15	0.85	0.18	61,64,67,71	0
4	FUC	E	2	10/11	0.86	0.23	74,78,79,79	0
5	NAG	I	1	14/15	0.86	0.23	63,66,71,74	0
5	NAG	G	3	14/15	0.88	0.22	81,82,83,83	0
2	NAG	H	2	14/15	0.89	0.22	54,56,59,61	0
2	NAG	H	1	14/15	0.92	0.20	46,48,52,53	0
3	NAG	D	1	14/15	0.95	0.12	54,57,64,64	0

The following is a graphical depiction of the model fit to experimental electron density for oligosaccharide. Each fit is shown from different orientation to approximate a three-dimensional view.



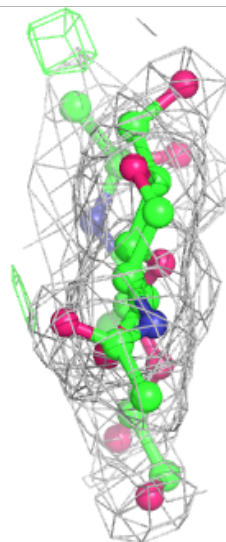
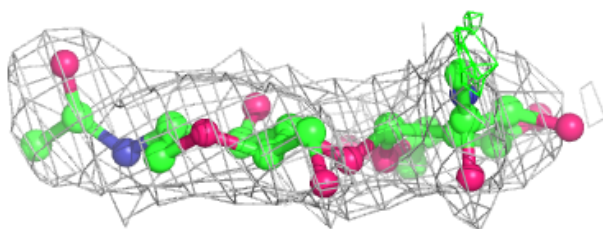
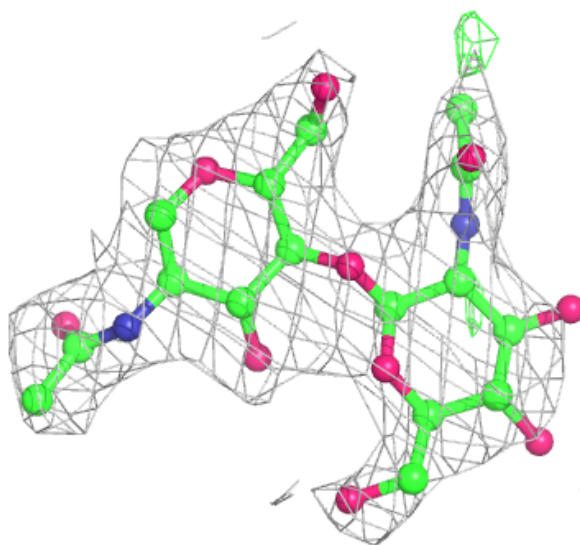
**Electron density around Chain H:**

$2mF_o-DF_c$  (at 0.7 rmsd) in gray  
 $mF_o-DF_c$  (at 3 rmsd) in purple (negative)  
and green (positive)



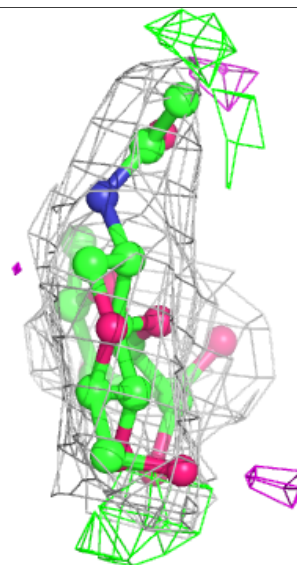
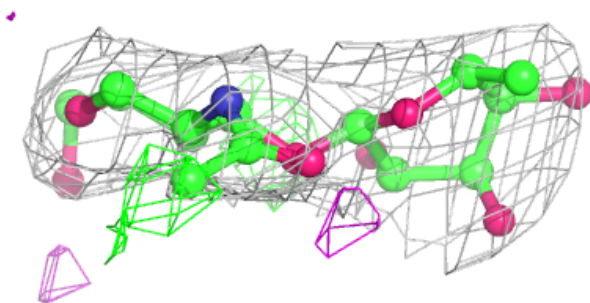
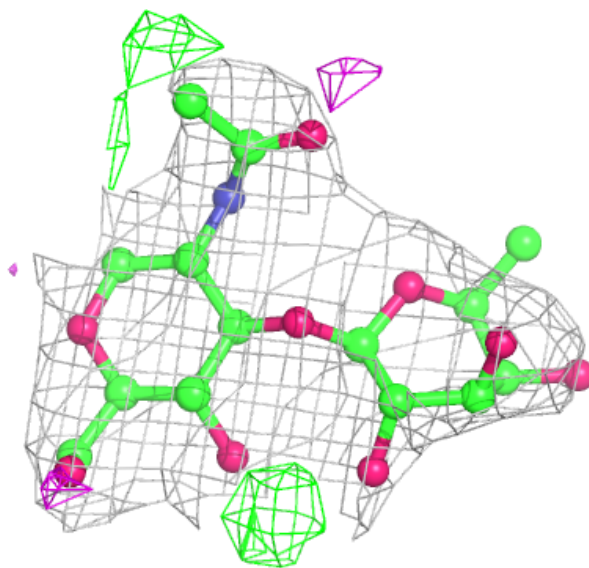
**Electron density around Chain D:**

$2mF_o-DF_c$  (at 0.7 rmsd) in gray  
 $mF_o-DF_c$  (at 3 rmsd) in purple (negative)  
and green (positive)



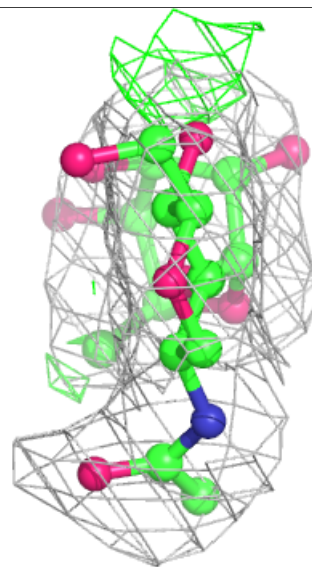
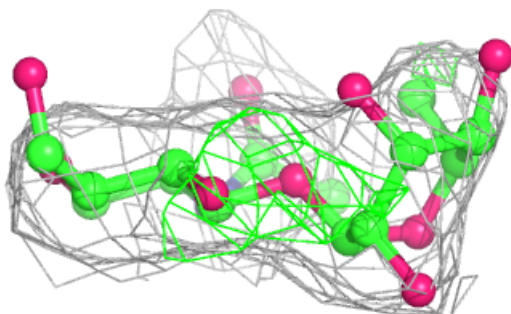
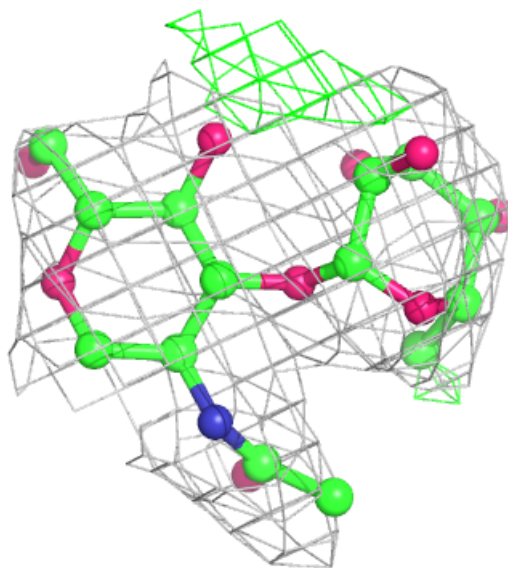
**Electron density around Chain E:**

$2mF_o-DF_c$  (at 0.7 rmsd) in gray  
 $mF_o-DF_c$  (at 3 rmsd) in purple (negative)  
and green (positive)



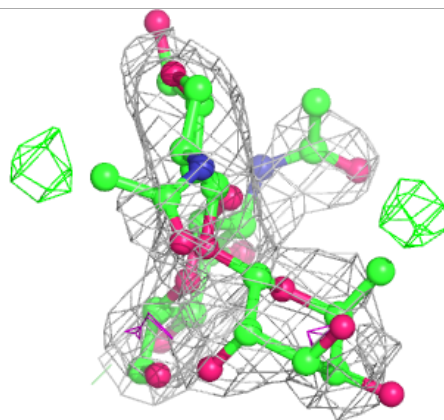
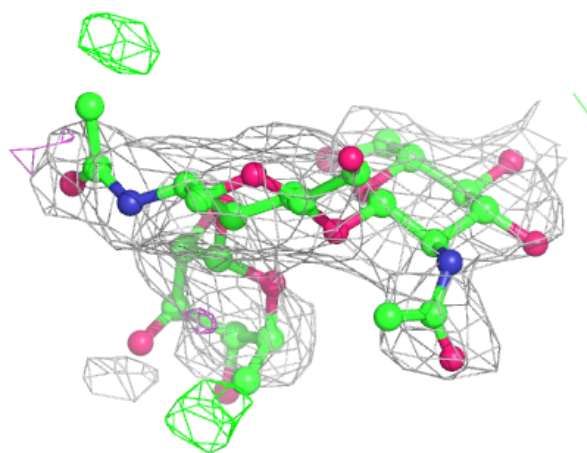
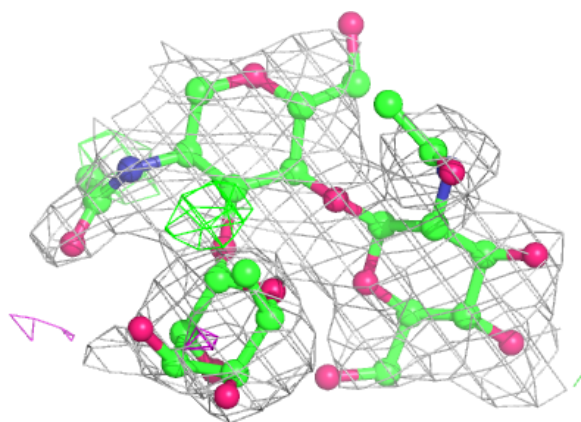
**Electron density around Chain F:**

$2mF_o-DF_c$  (at 0.7 rmsd) in gray  
 $mF_o-DF_c$  (at 3 rmsd) in purple (negative)  
and green (positive)

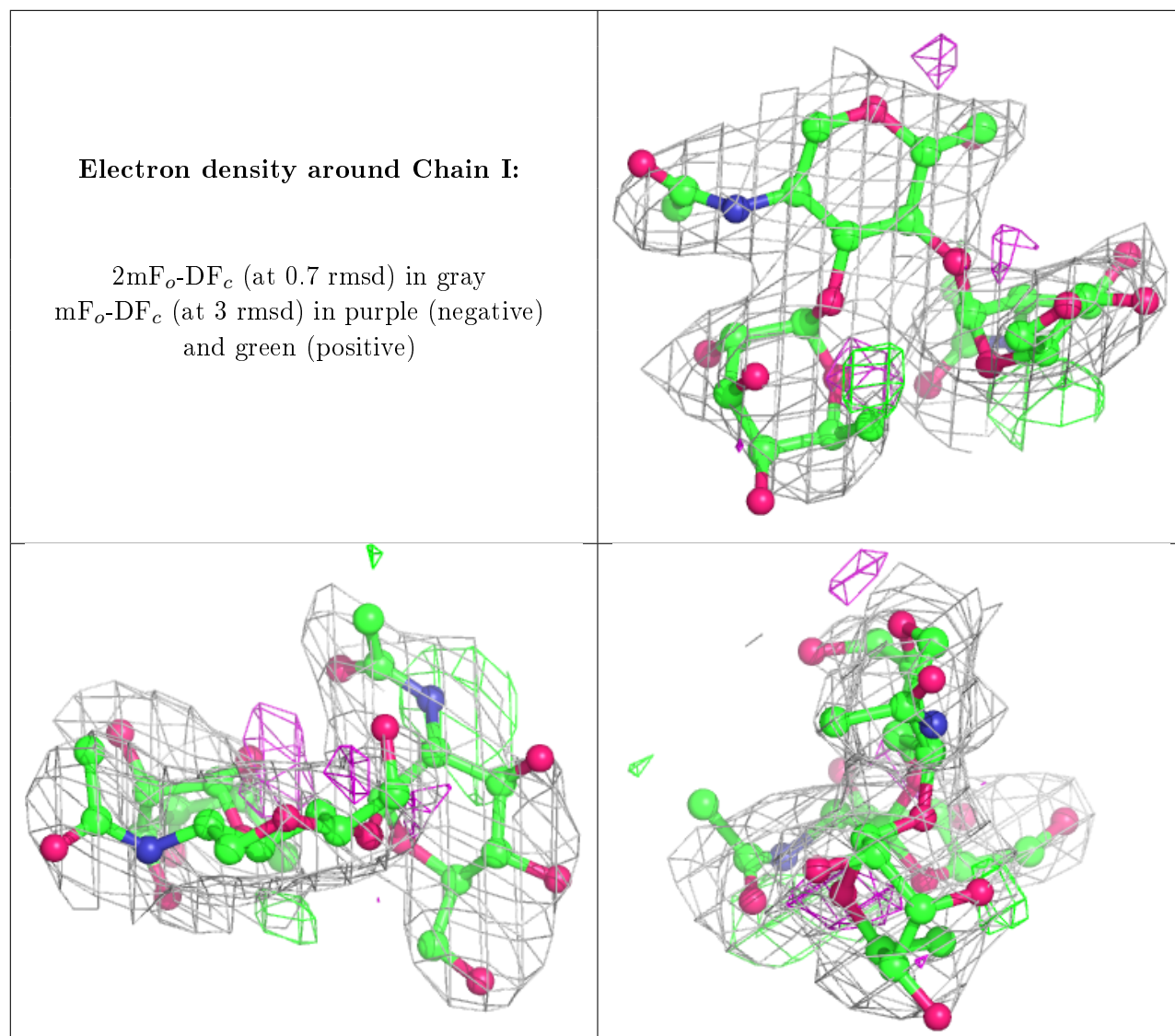


**Electron density around Chain G:**

$2mF_o-DF_c$  (at 0.7 rmsd) in gray  
 $mF_o-DF_c$  (at 3 rmsd) in purple (negative)  
and green (positive)







## 6.4 Ligands ⓘ

In the following table, the Atoms column lists the number of modelled atoms in the group and the number defined in the chemical component dictionary. The B-factors column lists the minimum, median, 95<sup>th</sup> percentile and maximum values of B factors of atoms in the group. The column labelled 'Q< 0.9' lists the number of atoms with occupancy less than 0.9.

Mol	Type	Chain	Res	Atoms	RSCC	RSR	B-factors(Å <sup>2</sup> )	Q<0.9
8	PO4	B	450	5/5	0.88	0.20	55,56,56,60	0
8	PO4	A	451	5/5	0.91	0.13	55,56,56,60	0
9	NAG	B	934	14/15	0.95	0.13	43,44,45,45	0
6	FE	A	429	1/1	0.96	0.04	63,63,63,63	0
6	FE	B	929	1/1	0.97	0.06	50,50,50,50	0
7	MN	B	930	1/1	0.99	0.10	36,36,36,36	0
7	MN	A	430	1/1	0.99	0.09	40,40,40,40	0

*Continued on next page...*

*Continued from previous page...*

Mol	Type	Chain	Res	Atoms	RSCC	RSR	B-factors( $\text{\AA}^2$ )	Q<0.9
8	PO4	A	431	5/5	0.99	0.15	51,51,53,53	0
8	PO4	B	931	5/5	0.99	0.11	40,40,42,44	0

## 6.5 Other polymers [i](#)

There are no such residues in this entry.