



# Full wwPDB X-ray Structure Validation Report ⓘ

May 25, 2020 – 03:32 pm BST

PDB ID : 1Y0P  
Title : Flavocytochrome c3 with mesaconate bound  
Authors : Mowat, C.G.; Wardrope, C.; Reid, G.A.; Chapman, S.K.  
Deposited on : 2004-11-16  
Resolution : 1.50 Å(reported)

This is a Full wwPDB X-ray Structure Validation Report for a publicly released PDB entry.

We welcome your comments at [validation@mail.wwpdb.org](mailto:validation@mail.wwpdb.org)

A user guide is available at

<https://www.wwpdb.org/validation/2017/XrayValidationReportHelp>

with specific help available everywhere you see the ⓘ symbol.

---

The following versions of software and data (see [references ⓘ](#)) were used in the production of this report:

MolProbity : 4.02b-467  
Mogul : 1.8.5 (274361), CSD as541be (2020)  
Xtriage (Phenix) : 1.13  
EDS : 2.11  
buster-report : 1.1.7 (2018)  
Percentile statistics : 20191225.v01 (using entries in the PDB archive December 25th 2019)  
Refmac : 5.8.0158  
CCP4 : 7.0.044 (Gargrove)  
Ideal geometry (proteins) : Engh & Huber (2001)  
Ideal geometry (DNA, RNA) : Parkinson et al. (1996)  
Validation Pipeline (wwPDB-VP) : 2.11

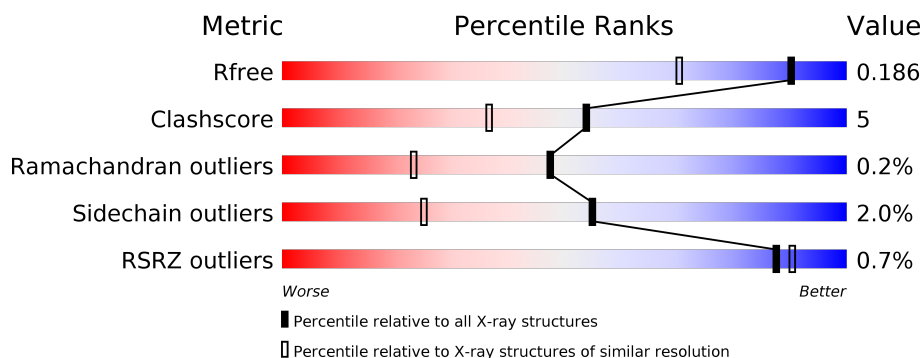
# 1 Overall quality at a glance ⓘ

The following experimental techniques were used to determine the structure:

*X-RAY DIFFRACTION*

The reported resolution of this entry is 1.50 Å.

Percentile scores (ranging between 0-100) for global validation metrics of the entry are shown in the following graphic. The table shows the number of entries on which the scores are based.



Metric	Whole archive (#Entries)	Similar resolution (#Entries, resolution range(Å))
$R_{free}$	130704	2936 (1.50-1.50)
Clashscore	141614	3144 (1.50-1.50)
Ramachandran outliers	138981	3066 (1.50-1.50)
Sidechain outliers	138945	3064 (1.50-1.50)
RSRZ outliers	127900	2884 (1.50-1.50)

The table below summarises the geometric issues observed across the polymeric chains and their fit to the electron density. The red, orange, yellow and green segments on the lower bar indicate the fraction of residues that contain outliers for  $\geq 3$ , 2, 1 and 0 types of geometric quality criteria respectively. A grey segment represents the fraction of residues that are not modelled. The numeric value for each fraction is indicated below the corresponding segment, with a dot representing fractions  $\leq 5\%$ . The upper red bar (where present) indicates the fraction of residues that have poor fit to the electron density. The numeric value is given above the bar.

Mol	Chain	Length	Quality of chain
1	A	571	<div> <div style="width: 100%; height: 10px; position: relative;"> <div style="position: absolute; top: -10px; left: 0; width: 100%; text-align: center;">%</div> <div style="position: absolute; top: 10px; left: 0; width: 100%; text-align: center;">91%</div> <div style="position: absolute; top: 10px; right: 0; width: 10%; text-align: right;">7% ..</div> </div> </div>

## 2 Entry composition [i](#)

There are 6 unique types of molecules in this entry. The entry contains 5701 atoms, of which 0 are hydrogens and 0 are deuteriums.

In the tables below, the ZeroOcc column contains the number of atoms modelled with zero occupancy, the AltConf column contains the number of residues with at least one atom in alternate conformation and the Trace column contains the number of residues modelled with at most 2 atoms.

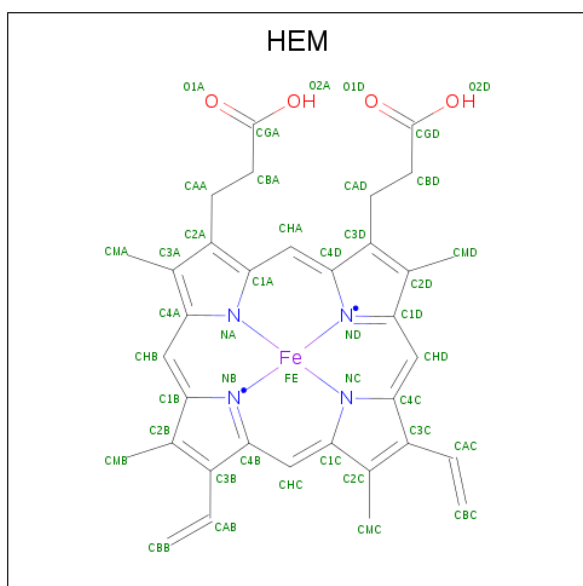
- Molecule 1 is a protein called Fumarate reductase flavoprotein subunit.

Mol	Chain	Residues	Atoms					ZeroOcc	AltConf	Trace
1	A	568	Total	C	N	O	S	0	0	0
			4217	2615	744	833	25			

- Molecule 2 is SODIUM ION (three-letter code: NA) (formula: Na).

Mol	Chain	Residues	Atoms		ZeroOcc	AltConf
2	A	1	Total	Na	0	0
			1	1		

- Molecule 3 is PROTOPORPHYRIN IX CONTAINING FE (three-letter code: HEM) (formula:  $C_{34}H_{32}FeN_4O_4$ ).



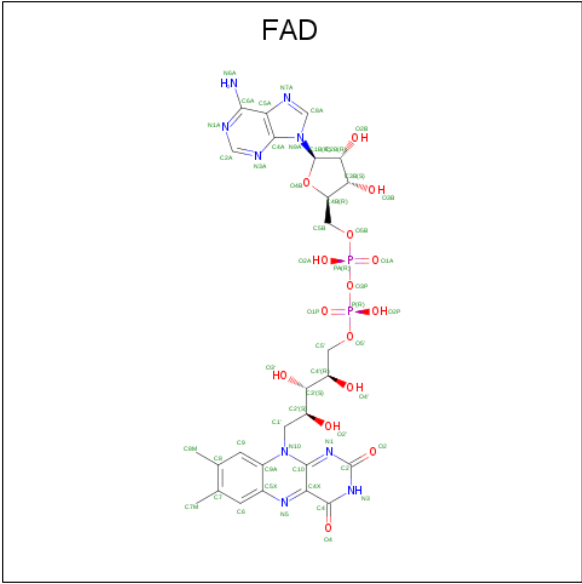
Mol	Chain	Residues	Atoms					ZeroOcc	AltConf
3	A	1	Total	C	Fe	N	O	0	0
			43	34	1	4	4		
3	A	1	Total	C	Fe	N	O	0	0
			43	34	1	4	4		

*Continued on next page...*

Continued from previous page...

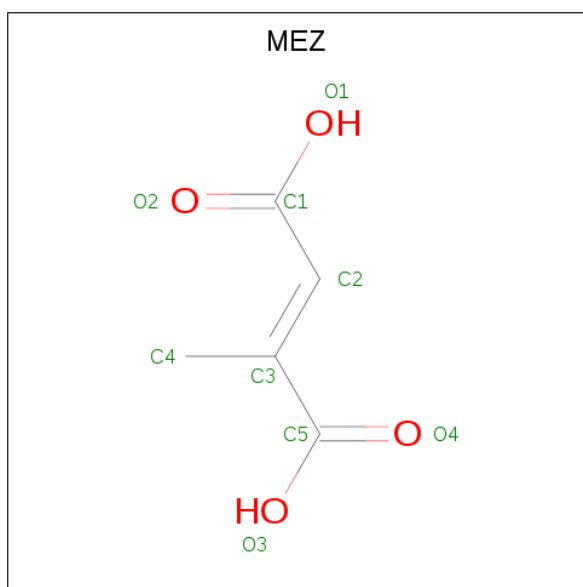
Mol	Chain	Residues	Atoms					ZeroOcc	AltConf
3	A	1	Total 43	C 34	Fe 1	N 4	O 4	0	0
3	A	1	Total 43	C 34	Fe 1	N 4	O 4	0	0

- Molecule 4 is FLAVIN-ADENINE DINUCLEOTIDE (three-letter code: FAD) (formula: C<sub>27</sub>H<sub>33</sub>N<sub>9</sub>O<sub>15</sub>P<sub>2</sub>).



Mol	Chain	Residues	Atoms					ZeroOcc	AltConf
4	A	1	Total	C	N	O	P	0	0
			53	27	9	15	2		

- Molecule 5 is (2E)-2-METHYLBUT-2-ENEDIOIC ACID (three-letter code: MEZ) (formula: C<sub>5</sub>H<sub>6</sub>O<sub>4</sub>).



Mol	Chain	Residues	Atoms			ZeroOcc	AltConf
5	A	1	Total	C	O	0	0
			9	5	4		

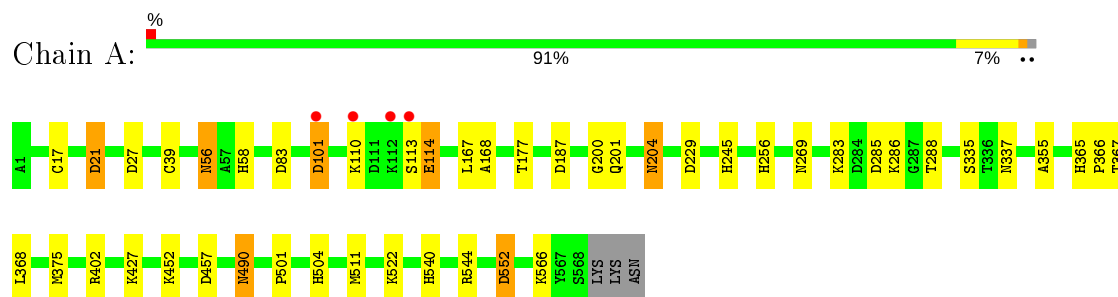
- Molecule 6 is water.

Mol	Chain	Residues	Atoms		ZeroOcc	AltConf
6	A	1249	Total	O	0	0
			1249	1249		

### 3 Residue-property plots [i](#)

These plots are drawn for all protein, RNA and DNA chains in the entry. The first graphic for a chain summarises the proportions of the various outlier classes displayed in the second graphic. The second graphic shows the sequence view annotated by issues in geometry and electron density. Residues are color-coded according to the number of geometric quality criteria for which they contain at least one outlier: green = 0, yellow = 1, orange = 2 and red = 3 or more. A red dot above a residue indicates a poor fit to the electron density ( $\text{RSRZ} > 2$ ). Stretches of 2 or more consecutive residues without any outlier are shown as a green connector. Residues present in the sample, but not in the model, are shown in grey.

- Molecule 1: Fumarate reductase flavoprotein subunit



## 4 Data and refinement statistics

Property	Value	Source
Space group	P 1 21 1	Depositor
Cell constants a, b, c, $\alpha$ , $\beta$ , $\gamma$	45.45Å 91.69Å 78.29Å 90.00° 91.13° 90.00°	Depositor
Resolution (Å)	24.00 – 1.50 22.72 – 1.50	Depositor EDS
% Data completeness (in resolution range)	97.2 (24.00-1.50) 97.2 (22.72-1.50)	Depositor EDS
$R_{merge}$	0.05	Depositor
$R_{sym}$	(Not available)	Depositor
$\langle I/\sigma(I) \rangle$ <sup>1</sup>	2.40 (at 1.50Å)	Xtriage
Refinement program	REFMAC 5.1.24	Depositor
R, $R_{free}$	0.151 , 0.184 0.153 , 0.186	Depositor DCC
$R_{free}$ test set	4978 reflections (5.00%)	wwPDB-VP
Wilson B-factor (Å <sup>2</sup> )	13.9	Xtriage
Anisotropy	0.119	Xtriage
Bulk solvent $k_{sol}$ (e/Å <sup>3</sup> ), $B_{sol}$ (Å <sup>2</sup> )	0.33 , 44.9	EDS
L-test for twinning <sup>2</sup>	$\langle  L  \rangle = 0.50$ , $\langle L^2 \rangle = 0.33$	Xtriage
Estimated twinning fraction	0.024 for h,-k,-l	Xtriage
$F_o, F_c$ correlation	0.97	EDS
Total number of atoms	5701	wwPDB-VP
Average B, all atoms (Å <sup>2</sup> )	20.0	wwPDB-VP

Xtriage's analysis on translational NCS is as follows: *The largest off-origin peak in the Patterson function is 4.06% of the height of the origin peak. No significant pseudotranslation is detected.*

<sup>1</sup>Intensities estimated from amplitudes.

<sup>2</sup>Theoretical values of  $\langle |L| \rangle$ ,  $\langle L^2 \rangle$  for acentric reflections are 0.5, 0.333 respectively for untwinned datasets, and 0.375, 0.2 for perfectly twinned datasets.

## 5 Model quality ⓘ

### 5.1 Standard geometry ⓘ

Bond lengths and bond angles in the following residue types are not validated in this section: HEM, NA, FAD, MEZ

The Z score for a bond length (or angle) is the number of standard deviations the observed value is removed from the expected value. A bond length (or angle) with  $|Z| > 5$  is considered an outlier worth inspection. RMSZ is the root-mean-square of all Z scores of the bond lengths (or angles).

Mol	Chain	Bond lengths		Bond angles	
		RMSZ	$\# Z  > 5$	RMSZ	$\# Z  > 5$
1	A	0.60	0/4287	0.83	8/5795 (0.1%)

There are no bond length outliers.

All (8) bond angle outliers are listed below:

Mol	Chain	Res	Type	Atoms	Z	Observed(°)	Ideal(°)
1	A	552	ASP	CB-CG-OD1	7.07	124.67	118.30
1	A	101	ASP	CB-CG-OD2	6.11	123.80	118.30
1	A	83	ASP	CB-CG-OD1	6.10	123.79	118.30
1	A	285	ASP	CB-CG-OD2	6.03	123.72	118.30
1	A	21	ASP	CB-CG-OD2	5.93	123.64	118.30
1	A	187	ASP	CB-CG-OD1	5.75	123.48	118.30
1	A	457	ASP	CB-CG-OD1	5.72	123.44	118.30
1	A	27	ASP	CB-CG-OD2	5.37	123.13	118.30

There are no chirality outliers.

There are no planarity outliers.

### 5.2 Too-close contacts ⓘ

In the following table, the Non-H and H(model) columns list the number of non-hydrogen atoms and hydrogen atoms in the chain respectively. The H(added) column lists the number of hydrogen atoms added and optimized by MolProbity. The Clashes column lists the number of clashes within the asymmetric unit, whereas Symm-Clashes lists symmetry related clashes.

Mol	Chain	Non-H	H(model)	H(added)	Clashes	Symm-Clashes
1	A	4217	0	4153	44	0
2	A	1	0	0	0	0
3	A	172	0	120	7	0

*Continued on next page...*

*Continued from previous page...*

Mol	Chain	Non-H	H(model)	H(added)	Clashes	Symm-Clashes
4	A	53	0	30	3	0
5	A	9	0	4	1	0
6	A	1249	0	0	16	0
All	All	5701	0	4307	44	0

The all-atom clashscore is defined as the number of clashes found per 1000 atoms (including hydrogen atoms). The all-atom clashscore for this structure is 5.

All (44) close contacts within the same asymmetric unit are listed below, sorted by their clash magnitude.

Atom-1	Atom-2	Interatomic distance (Å)	Clash overlap (Å)
1:A:375:MET:HE1	1:A:504:HIS:CE1	1.56	1.40
1:A:17:CYS:SG	3:A:801:HEM:HAC	1.69	1.24
1:A:39:CYS:SG	3:A:802:HEM:HAC	1.91	1.10
1:A:375:MET:CE	1:A:504:HIS:CE1	2.40	1.05
1:A:375:MET:HE1	1:A:504:HIS:HE1	0.93	0.97
1:A:229:ASP:H	1:A:256:HIS:HE1	1.14	0.96
1:A:204:ASN:H	1:A:204:ASN:HD22	1.20	0.86
1:A:200:GLY:HA3	1:A:204:ASN:HD21	1.51	0.76
1:A:39:CYS:SG	3:A:802:HEM:C3C	2.79	0.75
1:A:17:CYS:SG	3:A:801:HEM:CBC	2.75	0.74
1:A:39:CYS:SG	3:A:802:HEM:CBC	2.74	0.74
1:A:17:CYS:SG	3:A:801:HEM:C3C	2.83	0.72
1:A:501:PRO:HA	6:A:2150:HOH:O	1.91	0.70
1:A:365:HIS:O	6:A:2150:HOH:O	2.09	0.69
1:A:229:ASP:H	1:A:256:HIS:CE1	2.04	0.69
1:A:177:THR:OG1	1:A:245:HIS:HE1	1.79	0.64
1:A:204:ASN:ND2	1:A:204:ASN:H	1.94	0.64
1:A:113:SER:O	1:A:114:GLU:HB2	1.97	0.63
1:A:402:ARG:HH22	5:A:1806:MEZ:C3	2.14	0.60
1:A:540:HIS:HE1	1:A:552:ASP:OD2	1.89	0.56
1:A:168:ALA:HA	4:A:1805:FAD:N5	2.22	0.55
1:A:167:LEU:HB3	4:A:1805:FAD:HM72	1.92	0.51
1:A:113:SER:HA	6:A:2641:HOH:O	2.12	0.50
1:A:56:ASN:HD22	1:A:58:HIS:H	1.59	0.49
1:A:427:LYS:NZ	6:A:2721:HOH:O	2.46	0.48
1:A:540:HIS:HD2	6:A:1849:HOH:O	1.95	0.48
1:A:540:HIS:CD2	1:A:544:ARG:HG3	2.49	0.48
1:A:168:ALA:HA	4:A:1805:FAD:C5X	2.43	0.48
1:A:367:THR:N	6:A:2150:HOH:O	2.46	0.48
1:A:201:GLN:HG2	6:A:2656:HOH:O	2.14	0.47

*Continued on next page...*

Continued from previous page...

Atom-1	Atom-2	Interatomic distance (Å)	Clash overlap (Å)
1:A:490:ASN:C	1:A:490:ASN:HD22	2.19	0.46
1:A:56:ASN:ND2	1:A:58:HIS:H	2.13	0.45
1:A:256:HIS:HD2	6:A:2782:HOH:O	1.98	0.45
1:A:204:ASN:ND2	1:A:204:ASN:N	2.64	0.45
1:A:366:PRO:C	6:A:2150:HOH:O	2.56	0.45
1:A:522:LYS:NZ	6:A:3052:HOH:O	2.50	0.44
1:A:335:SER:HB3	6:A:2061:HOH:O	2.18	0.44
1:A:17:CYS:CB	3:A:801:HEM:C3C	3.01	0.43
1:A:355:ALA:HB3	1:A:511:MET:HE3	2.01	0.43
1:A:283:LYS:NZ	6:A:2170:HOH:O	2.53	0.42
1:A:566:LYS:HG3	6:A:2416:HOH:O	2.19	0.42
1:A:368:LEU:HD13	6:A:2150:HOH:O	2.20	0.41
1:A:101:ASP:HA	6:A:2589:HOH:O	2.20	0.41
1:A:286:LYS:HD3	6:A:2324:HOH:O	2.20	0.41

There are no symmetry-related clashes.

## 5.3 Torsion angles [i](#)

### 5.3.1 Protein backbone [i](#)

In the following table, the Percentiles column shows the percent Ramachandran outliers of the chain as a percentile score with respect to all X-ray entries followed by that with respect to entries of similar resolution.

The Analysed column shows the number of residues for which the backbone conformation was analysed, and the total number of residues.

Mol	Chain	Analysed	Favoured	Allowed	Outliers	Percentiles
1	A	566/571 (99%)	549 (97%)	16 (3%)	1 (0%)	47 23

All (1) Ramachandran outliers are listed below:

Mol	Chain	Res	Type
1	A	114	GLU

### 5.3.2 Protein sidechains [i](#)

In the following table, the Percentiles column shows the percent sidechain outliers of the chain as a percentile score with respect to all X-ray entries followed by that with respect to entries of similar

resolution.

The Analysed column shows the number of residues for which the sidechain conformation was analysed, and the total number of residues.

Mol	Chain	Analysed	Rotameric	Outliers	Percentiles
1	A	442/445 (99%)	433 (98%)	9 (2%)	55 25

All (9) residues with a non-rotameric sidechain are listed below:

Mol	Chain	Res	Type
1	A	21	ASP
1	A	56	ASN
1	A	110	LYS
1	A	204	ASN
1	A	269	ASN
1	A	288	THR
1	A	337	ASN
1	A	452	LYS
1	A	490	ASN

Some sidechains can be flipped to improve hydrogen bonding and reduce clashes. All (8) such sidechains are listed below:

Mol	Chain	Res	Type
1	A	56	ASN
1	A	91	ASN
1	A	201	GLN
1	A	204	ASN
1	A	245	HIS
1	A	256	HIS
1	A	490	ASN
1	A	540	HIS

### 5.3.3 RNA ⓘ

There are no RNA molecules in this entry.

## 5.4 Non-standard residues in protein, DNA, RNA chains ⓘ

There are no non-standard protein/DNA/RNA residues in this entry.

## 5.5 Carbohydrates

There are no carbohydrates in this entry.

## 5.6 Ligand geometry

Of 7 ligands modelled in this entry, 1 is monoatomic - leaving 6 for Mogul analysis.

In the following table, the Counts columns list the number of bonds (or angles) for which Mogul statistics could be retrieved, the number of bonds (or angles) that are observed in the model and the number of bonds (or angles) that are defined in the Chemical Component Dictionary. The Link column lists molecule types, if any, to which the group is linked. The Z score for a bond length (or angle) is the number of standard deviations the observed value is removed from the expected value. A bond length (or angle) with  $|Z| > 2$  is considered an outlier worth inspection. RMSZ is the root-mean-square of all Z scores of the bond lengths (or angles).

Mol	Type	Chain	Res	Link	Bond lengths			Bond angles		
					Counts	RMSZ	$\# Z  > 2$	Counts	RMSZ	$\# Z  > 2$
3	HEM	A	804	1	27,50,50	1.97	6 (22%)	17,82,82	1.60	5 (29%)
5	MEZ	A	1806	-	2,8,8	1.63	0	1,10,10	0.28	0
3	HEM	A	801	1	27,50,50	2.00	8 (29%)	17,82,82	1.65	4 (23%)
3	HEM	A	803	1	27,50,50	1.92	6 (22%)	17,82,82	2.25	8 (47%)
3	HEM	A	802	1	27,50,50	2.01	5 (18%)	17,82,82	1.38	2 (11%)
4	FAD	A	1805	-	51,58,58	2.42	17 (33%)	60,89,89	2.74	24 (40%)

In the following table, the Chirals column lists the number of chiral outliers, the number of chiral centers analysed, the number of these observed in the model and the number defined in the Chemical Component Dictionary. Similar counts are reported in the Torsion and Rings columns. '-' means no outliers of that kind were identified.

Mol	Type	Chain	Res	Link	Chirals	Torsions	Rings
3	HEM	A	804	1	-	2/6/54/54	-
5	MEZ	A	1806	-	-	0/1/8/8	-
3	HEM	A	801	1	-	0/6/54/54	-
3	HEM	A	803	1	-	0/6/54/54	-
3	HEM	A	802	1	-	0/6/54/54	-
4	FAD	A	1805	-	-	8/30/50/50	0/6/6/6

All (42) bond length outliers are listed below:

Mol	Chain	Res	Type	Atoms	Z	Observed(Å)	Ideal(Å)
4	A	1805	FAD	C10-N1	-6.01	1.25	1.33
4	A	1805	FAD	C5X-N5	5.90	1.45	1.35

*Continued on next page...*

*Continued from previous page...*

Mol	Chain	Res	Type	Atoms	Z	Observed(Å)	Ideal(Å)
4	A	1805	FAD	C2A-N3A	5.62	1.41	1.32
3	A	804	HEM	C3C-C2C	-5.54	1.32	1.40
3	A	801	HEM	C3B-C2B	-4.79	1.33	1.40
3	A	802	HEM	C3B-C2B	-4.79	1.33	1.40
3	A	803	HEM	C3C-C2C	-4.71	1.33	1.40
4	A	1805	FAD	C4-C4X	4.70	1.49	1.41
4	A	1805	FAD	C9A-N10	4.50	1.44	1.38
3	A	802	HEM	C3D-C2D	4.25	1.50	1.37
3	A	803	HEM	C3D-C2D	4.21	1.50	1.37
3	A	804	HEM	C3B-C2B	-4.15	1.34	1.40
4	A	1805	FAD	C5'-C4'	-4.13	1.45	1.51
4	A	1805	FAD	C4X-C10	4.12	1.42	1.38
3	A	802	HEM	C3C-CAC	4.11	1.56	1.47
4	A	1805	FAD	C6-C5X	4.06	1.48	1.41
3	A	801	HEM	C3D-C2D	3.91	1.49	1.37
3	A	801	HEM	C3C-CAC	3.69	1.55	1.47
3	A	801	HEM	C3C-C2C	-3.64	1.35	1.40
4	A	1805	FAD	C4'-C3'	3.56	1.60	1.53
3	A	802	HEM	C3C-C2C	-3.44	1.35	1.40
3	A	803	HEM	C3B-CAB	3.26	1.54	1.47
3	A	804	HEM	C3D-C2D	3.21	1.47	1.37
4	A	1805	FAD	C1'-N10	-3.09	1.45	1.48
3	A	804	HEM	C3C-CAC	3.09	1.54	1.47
3	A	803	HEM	C3B-C2B	-3.05	1.36	1.40
3	A	801	HEM	C3B-CAB	3.04	1.54	1.47
4	A	1805	FAD	O4-C4	-2.98	1.17	1.24
4	A	1805	FAD	O3B-C3B	2.97	1.50	1.43
3	A	804	HEM	C3B-CAB	2.90	1.53	1.47
4	A	1805	FAD	O2'-C2'	2.89	1.49	1.43
4	A	1805	FAD	C4-N3	2.78	1.37	1.33
3	A	803	HEM	CAA-C2A	2.70	1.56	1.52
3	A	802	HEM	C3B-CAB	2.66	1.53	1.47
3	A	803	HEM	C3C-CAC	2.63	1.53	1.47
4	A	1805	FAD	C2-N1	2.62	1.43	1.38
3	A	804	HEM	C1D-ND	2.60	1.41	1.36
3	A	801	HEM	CMA-C3A	2.24	1.56	1.51
3	A	801	HEM	C1D-CHD	-2.21	1.34	1.41
4	A	1805	FAD	O4B-C1B	-2.20	1.38	1.41
4	A	1805	FAD	C8A-N7A	-2.18	1.30	1.34
3	A	801	HEM	C4A-NA	2.02	1.40	1.36

All (43) bond angle outliers are listed below:

Mol	Chain	Res	Type	Atoms	Z	Observed(°)	Ideal(°)
4	A	1805	FAD	C4-N3-C2	10.56	124.06	115.14
4	A	1805	FAD	C4X-C4-N3	-6.86	114.05	123.43
4	A	1805	FAD	O2B-C2B-C3B	5.25	128.79	111.82
3	A	803	HEM	CBD-CAD-C3D	-4.91	103.43	112.48
4	A	1805	FAD	C10-C4X-N5	4.78	124.57	121.26
4	A	1805	FAD	O4'-C4'-C3'	-4.37	98.48	109.10
4	A	1805	FAD	O3B-C3B-C2B	-4.21	98.19	111.82
4	A	1805	FAD	C3B-C2B-C1B	4.14	107.20	100.98
4	A	1805	FAD	C4-C4X-C10	-3.97	117.32	119.95
4	A	1805	FAD	O2'-C2'-C1'	3.44	117.87	109.59
4	A	1805	FAD	C1'-N10-C9A	3.37	120.95	118.29
3	A	803	HEM	C1D-C2D-C3D	-3.34	104.67	107.00
3	A	801	HEM	CBD-CAD-C3D	-3.27	106.45	112.48
4	A	1805	FAD	O5'-C5'-C4'	-3.23	100.74	109.36
3	A	804	HEM	C4A-C3A-C2A	3.19	109.22	107.00
3	A	801	HEM	CMA-C3A-C4A	-3.18	123.58	128.46
4	A	1805	FAD	C8M-C8-C9	-3.16	112.79	120.34
4	A	1805	FAD	C5X-C9A-N10	3.15	120.00	117.72
4	A	1805	FAD	C9A-C5X-N5	-3.08	117.55	122.36
3	A	802	HEM	CBA-CAA-C2A	-3.02	106.92	112.49
4	A	1805	FAD	C9-C8-C7	3.02	125.00	119.91
4	A	1805	FAD	C6-C5X-C9A	2.88	122.82	119.05
3	A	801	HEM	CBA-CAA-C2A	-2.81	107.30	112.49
4	A	1805	FAD	C7-C6-C5X	-2.80	117.25	121.22
3	A	803	HEM	CMA-C3A-C4A	-2.75	124.24	128.46
3	A	803	HEM	C4C-C3C-C2C	2.73	108.81	106.90
3	A	803	HEM	CBA-CAA-C2A	-2.71	107.50	112.49
4	A	1805	FAD	C4X-N5-C5X	2.67	119.44	116.77
4	A	1805	FAD	O4'-C4'-C5'	2.64	115.85	109.92
4	A	1805	FAD	C5'-C4'-C3'	2.64	117.30	112.20
4	A	1805	FAD	O2B-C2B-C1B	2.54	120.22	110.85
4	A	1805	FAD	C4A-C5A-N7A	-2.48	106.81	109.40
3	A	803	HEM	C3C-C4C-NC	-2.42	106.37	110.94
3	A	804	HEM	CMA-C3A-C4A	-2.40	124.78	128.46
3	A	803	HEM	C4A-C3A-C2A	2.37	108.65	107.00
4	A	1805	FAD	O3'-C3'-C2'	-2.29	103.28	108.81
3	A	804	HEM	CBA-CAA-C2A	-2.28	108.29	112.49
3	A	801	HEM	CMA-C3A-C2A	2.28	129.23	124.94
3	A	802	HEM	C3B-C4B-NB	-2.13	106.45	109.21
4	A	1805	FAD	C1B-N9A-C4A	2.10	130.34	126.64
3	A	804	HEM	CMB-C2B-C3B	2.06	128.54	124.68
3	A	803	HEM	C3B-C4B-NB	2.06	111.87	109.21
3	A	804	HEM	CMC-C2C-C3C	2.05	128.52	124.68

There are no chirality outliers.

All (10) torsion outliers are listed below:

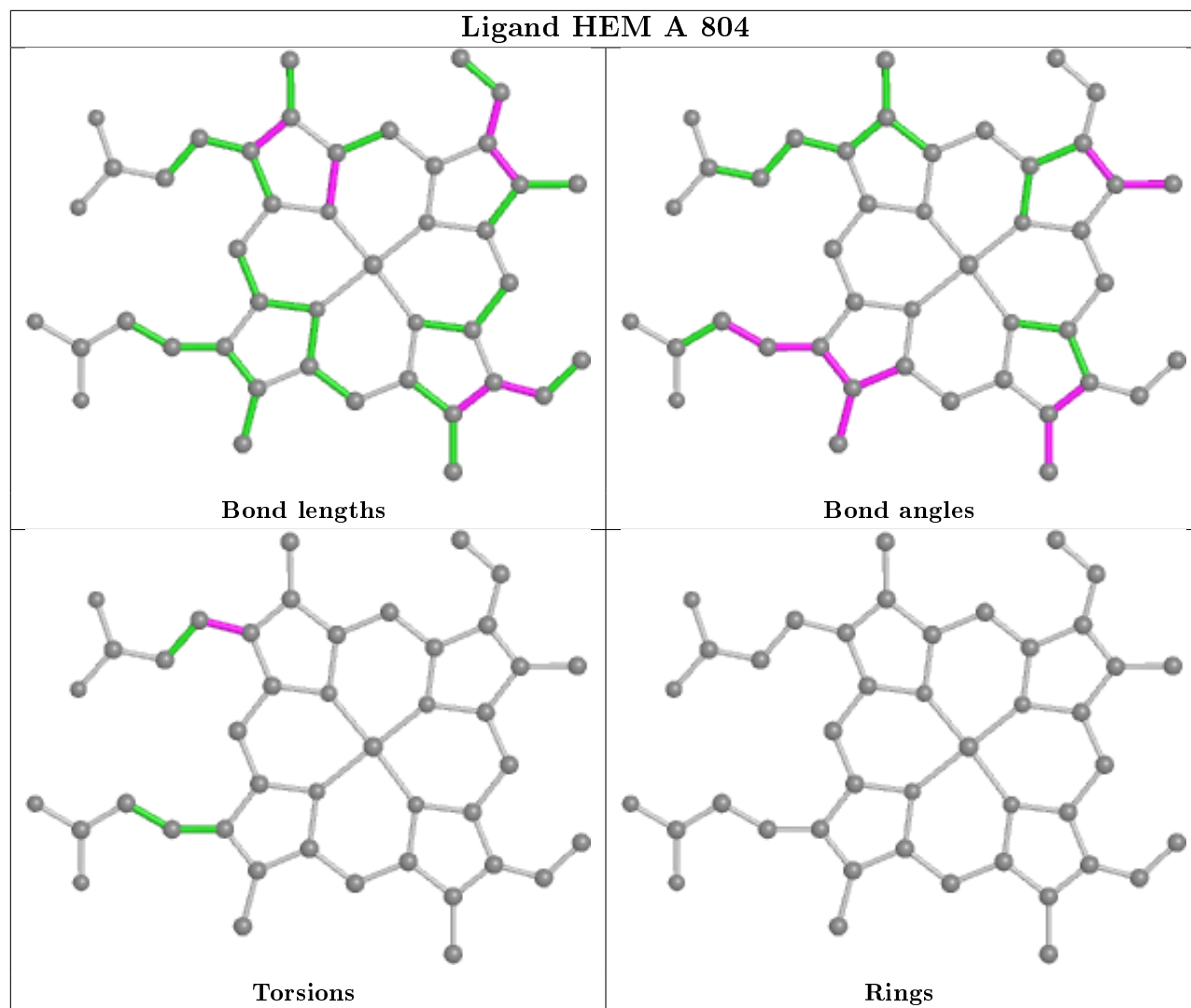
Mol	Chain	Res	Type	Atoms
4	A	1805	FAD	N10-C1'-C2'-O2'
4	A	1805	FAD	C2'-C3'-C4'-O4'
4	A	1805	FAD	C2'-C3'-C4'-C5'
4	A	1805	FAD	O3'-C3'-C4'-C5'
4	A	1805	FAD	PA-O3P-P-O5'
3	A	804	HEM	C2D-C3D-CAD-CBD
3	A	804	HEM	C4D-C3D-CAD-CBD
4	A	1805	FAD	N10-C1'-C2'-C3'
4	A	1805	FAD	O3'-C3'-C4'-O4'
4	A	1805	FAD	O4B-C4B-C5B-O5B

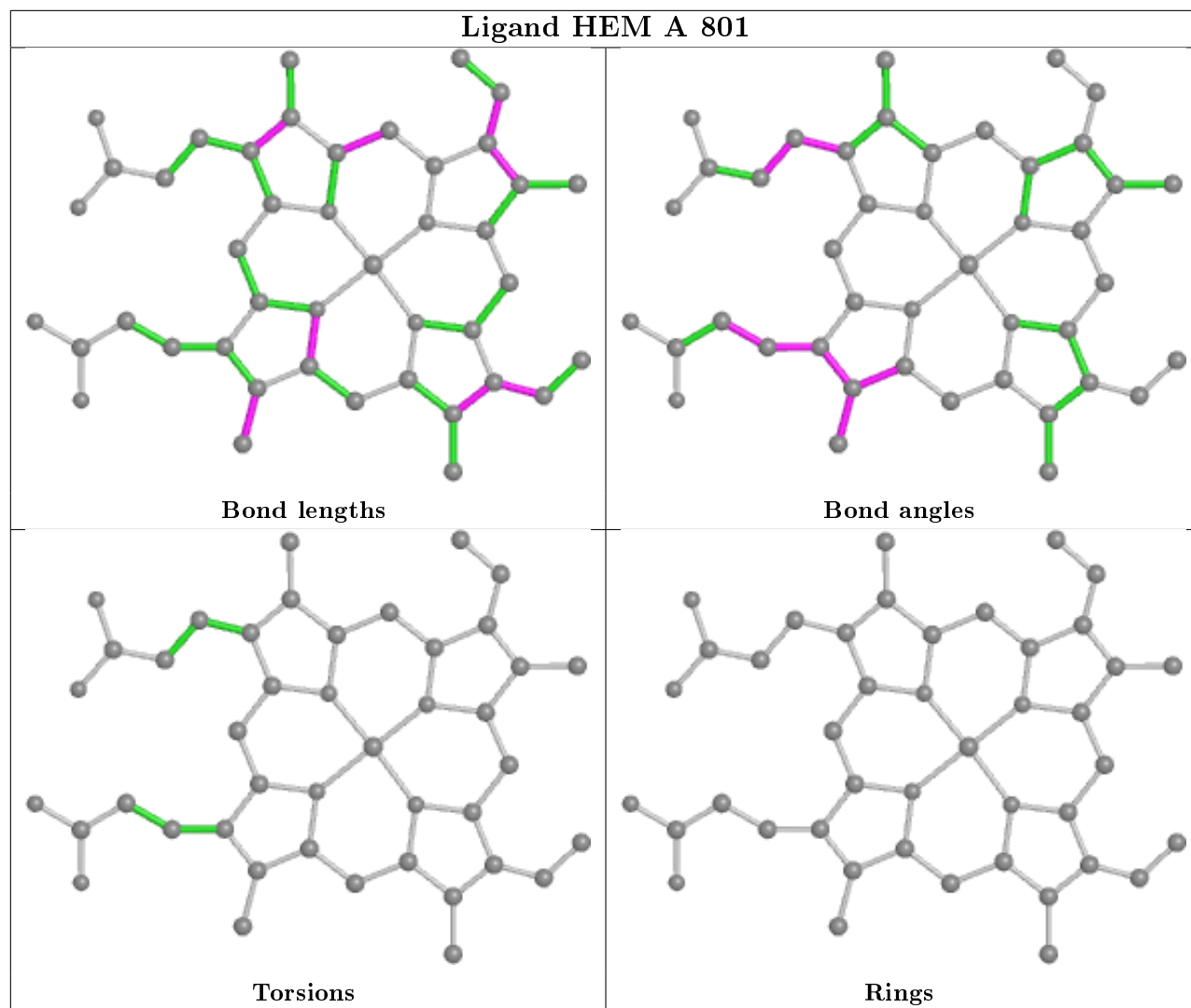
There are no ring outliers.

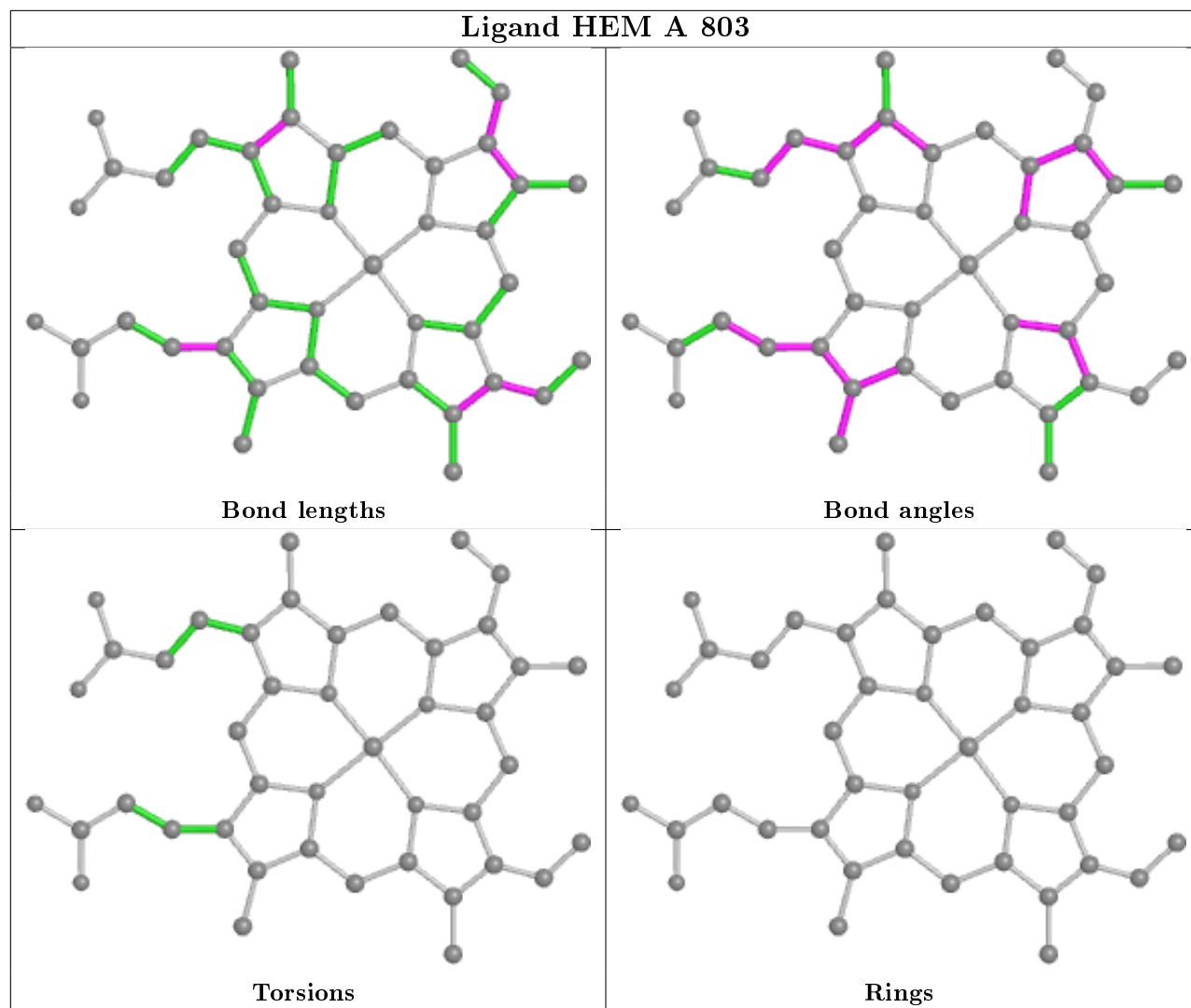
4 monomers are involved in 11 short contacts:

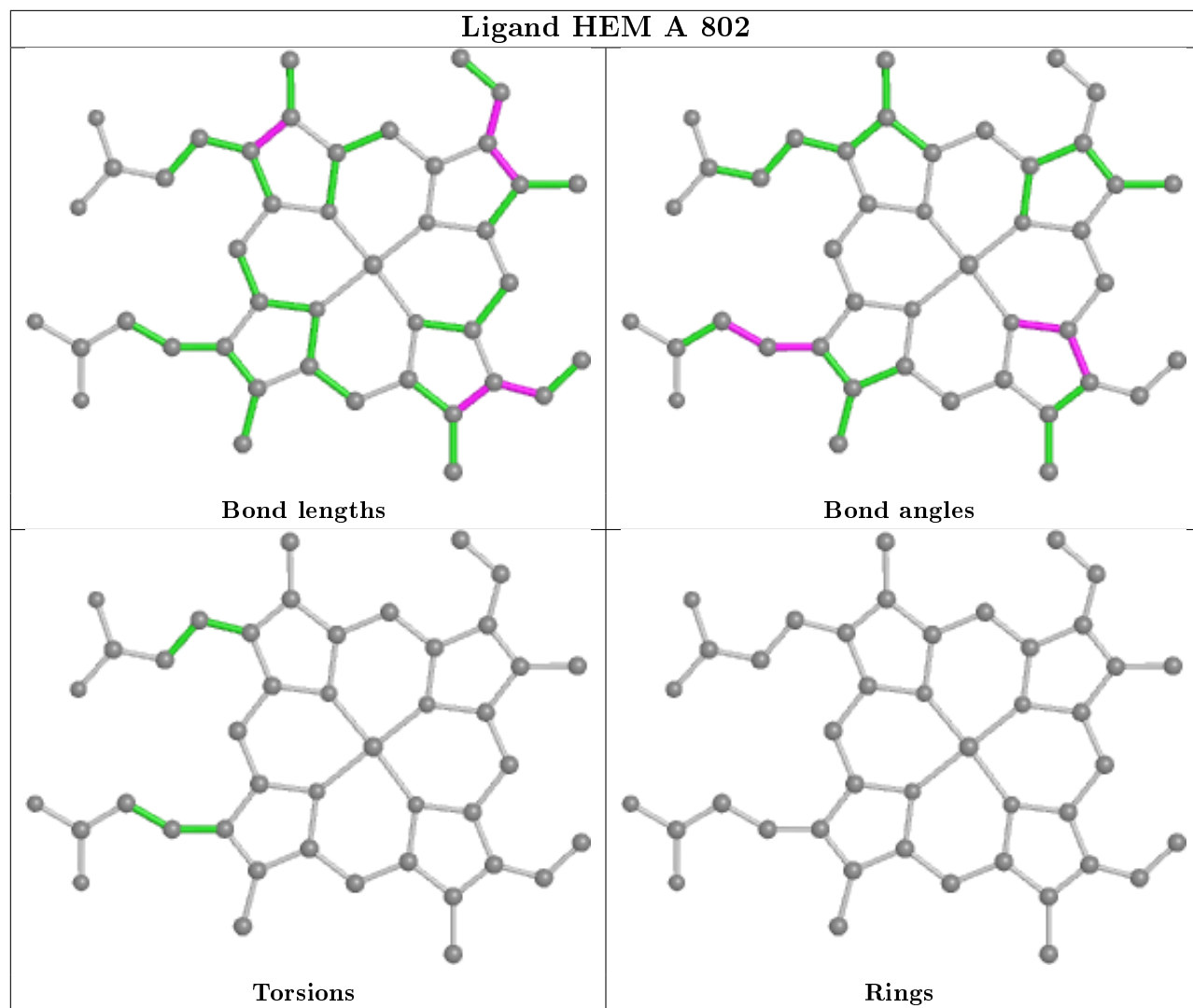
Mol	Chain	Res	Type	Clashes	Symm-Clashes
5	A	1806	MEZ	1	0
3	A	801	HEM	4	0
3	A	802	HEM	3	0
4	A	1805	FAD	3	0

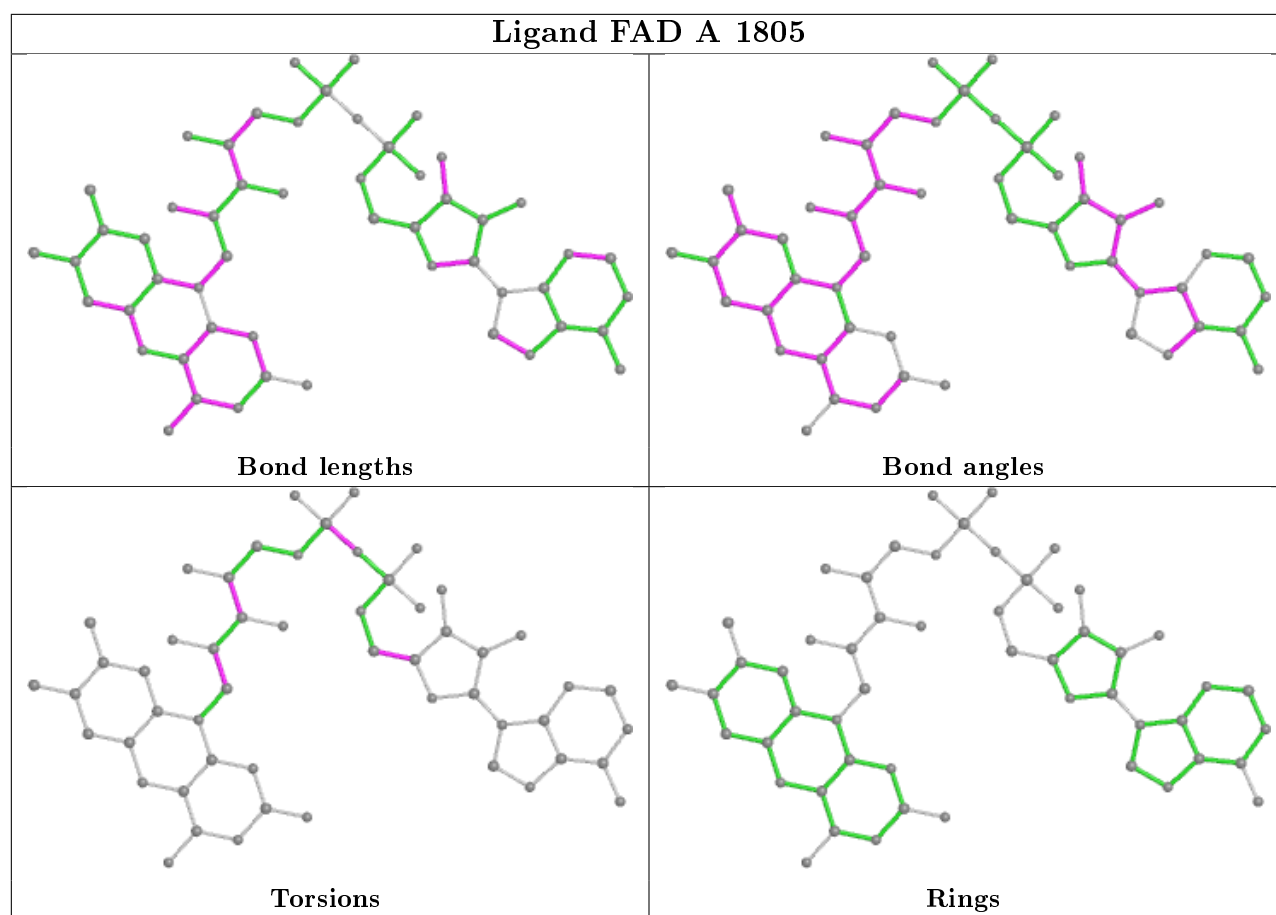
The following is a two-dimensional graphical depiction of Mogul quality analysis of bond lengths, bond angles, torsion angles, and ring geometry for all instances of the Ligand of Interest. In addition, ligands with molecular weight > 250 and outliers as shown on the validation Tables will also be included. For torsion angles, if less than 5% of the Mogul distribution of torsion angles is within 10 degrees of the torsion angle in question, then that torsion angle is considered an outlier. Any bond that is central to one or more torsion angles identified as an outlier by Mogul will be highlighted in the graph. For rings, the root-mean-square deviation (RMSD) between the ring in question and similar rings identified by Mogul is calculated over all ring torsion angles. If the average RMSD is greater than 60 degrees and the minimal RMSD between the ring in question and any Mogul-identified rings is also greater than 60 degrees, then that ring is considered an outlier. The outliers are highlighted in purple. The color gray indicates Mogul did not find sufficient equivalents in the CSD to analyse the geometry.











## 5.7 Other polymers [i](#)

There are no such residues in this entry.

## 5.8 Polymer linkage issues [i](#)

There are no chain breaks in this entry.

## 6 Fit of model and data [i](#)

### 6.1 Protein, DNA and RNA chains [i](#)

In the following table, the column labelled ‘#RSRZ> 2’ contains the number (and percentage) of RSRZ outliers, followed by percent RSRZ outliers for the chain as percentile scores relative to all X-ray entries and entries of similar resolution. The OWAB column contains the minimum, median, 95<sup>th</sup> percentile and maximum values of the occupancy-weighted average B-factor per residue. The column labelled ‘Q< 0.9’ lists the number of (and percentage) of residues with an average occupancy less than 0.9.

Mol	Chain	Analysed	<RSRZ>	#RSRZ>2	OWAB(Å <sup>2</sup> )	Q<0.9
1	A	568/571 (99%)	-0.31	4 (0%) 87 90	7, 15, 25, 38	0

All (4) RSRZ outliers are listed below:

Mol	Chain	Res	Type	RSRZ
1	A	101	ASP	3.7
1	A	110	LYS	3.5
1	A	113	SER	3.1
1	A	112	LYS	2.2

### 6.2 Non-standard residues in protein, DNA, RNA chains [i](#)

There are no non-standard protein/DNA/RNA residues in this entry.

### 6.3 Carbohydrates [i](#)

There are no carbohydrates in this entry.

### 6.4 Ligands [i](#)

In the following table, the Atoms column lists the number of modelled atoms in the group and the number defined in the chemical component dictionary. The B-factors column lists the minimum, median, 95<sup>th</sup> percentile and maximum values of B factors of atoms in the group. The column labelled ‘Q< 0.9’ lists the number of atoms with occupancy less than 0.9.

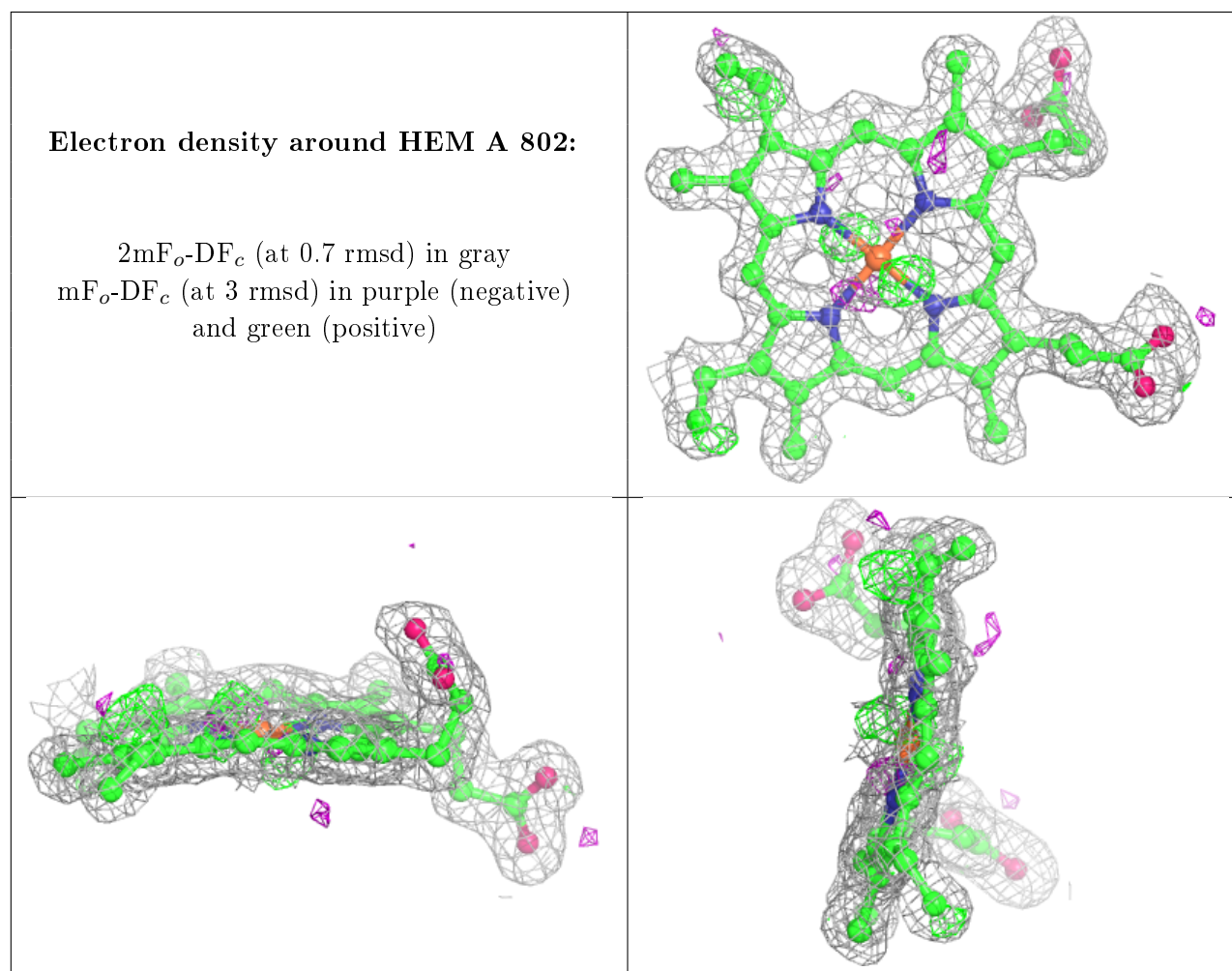
Mol	Type	Chain	Res	Atoms	RSCC	RSR	B-factors(Å <sup>2</sup> )	Q<0.9
3	HEM	A	802	43/43	0.95	0.10	13,18,28,34	0
3	HEM	A	803	43/43	0.96	0.09	10,14,28,37	0
3	HEM	A	801	43/43	0.97	0.09	10,15,21,25	0

*Continued on next page...*

*Continued from previous page...*

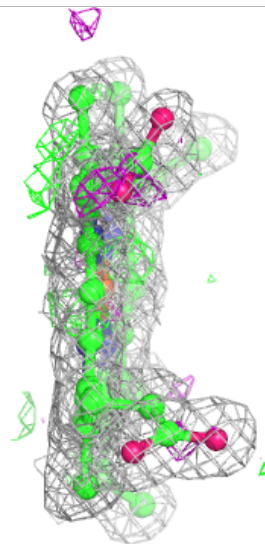
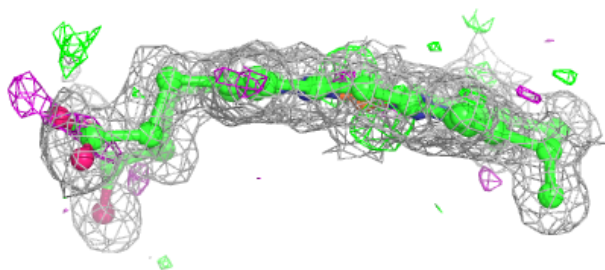
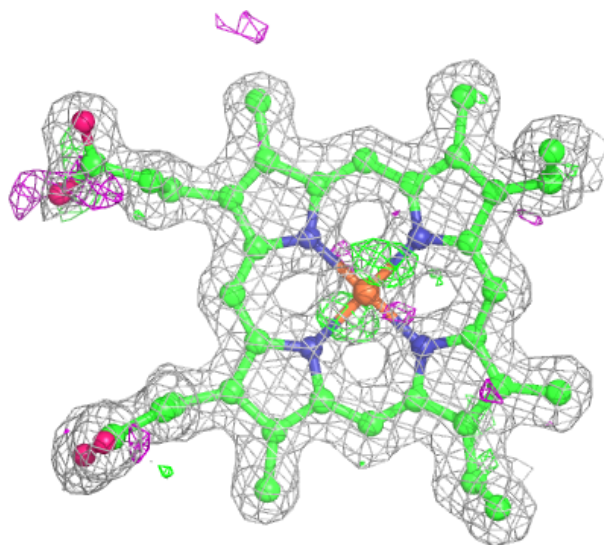
Mol	Type	Chain	Res	Atoms	RSCC	RSR	B-factors( $\text{\AA}^2$ )	Q<0.9
5	MEZ	A	1806	9/9	0.98	0.05	10,13,16,18	0
4	FAD	A	1805	53/53	0.98	0.06	7,9,16,17	0
3	HEM	A	804	43/43	0.99	0.06	7,10,14,16	0
2	NA	A	1810	1/1	0.99	0.04	8,8,8,8	0

The following is a graphical depiction of the model fit to experimental electron density of all instances of the Ligand of Interest. In addition, ligands with molecular weight > 250 and outliers as shown on the geometry validation Tables will also be included. Each fit is shown from different orientation to approximate a three-dimensional view.



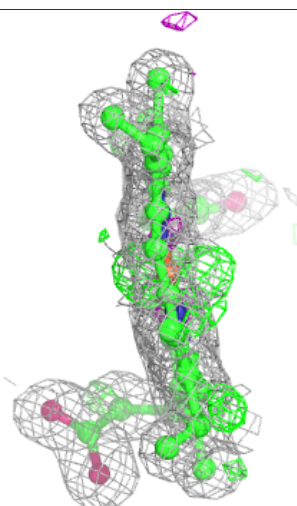
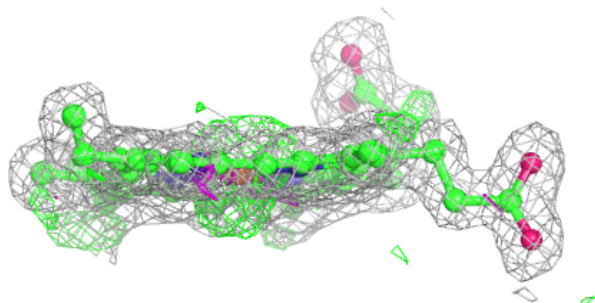
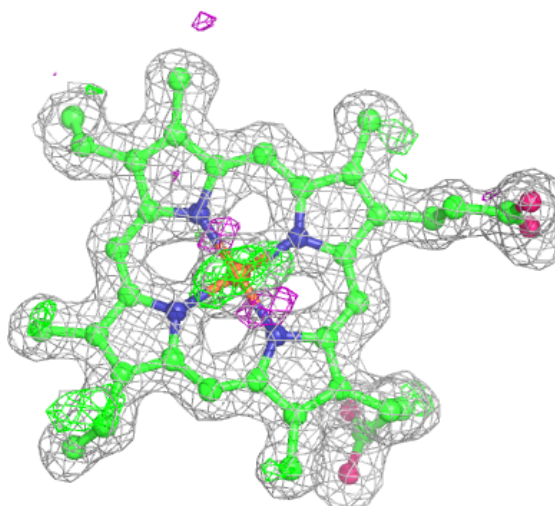
**Electron density around HEM A 803:**

$2mF_o-DF_c$  (at 0.7 rmsd) in gray  
 $mF_o-DF_c$  (at 3 rmsd) in purple (negative)  
and green (positive)



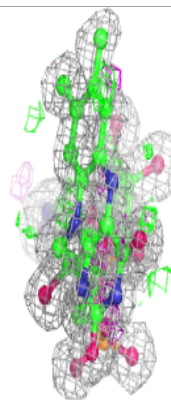
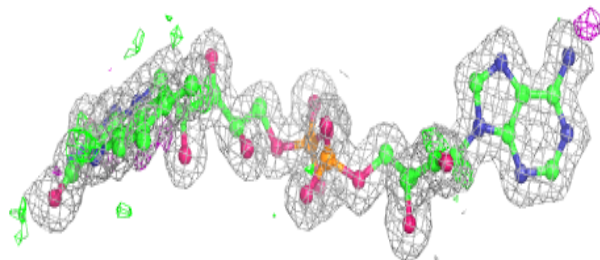
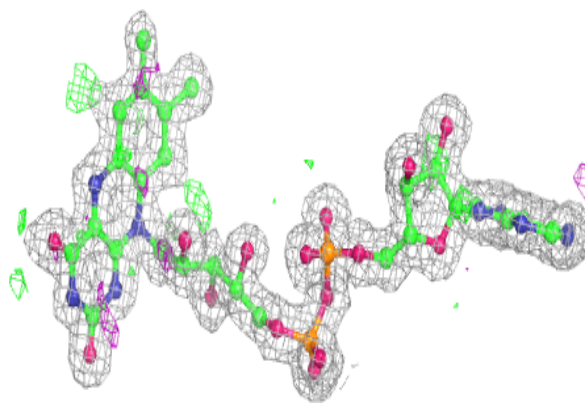
**Electron density around HEM A 801:**

$2mF_o-DF_c$  (at 0.7 rmsd) in gray  
 $mF_o-DF_c$  (at 3 rmsd) in purple (negative)  
and green (positive)



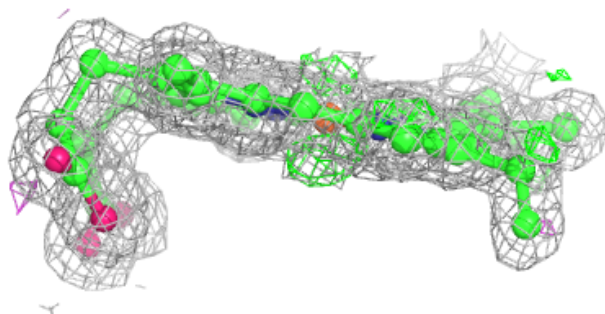
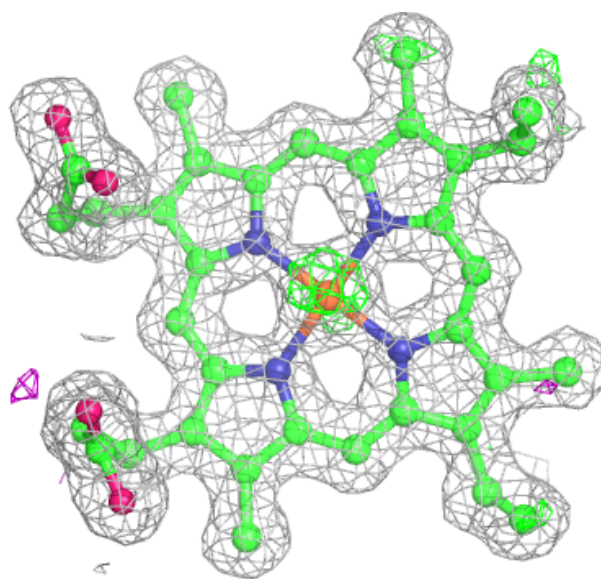
**Electron density around FAD A 1805:**

$2mF_o-DF_c$  (at 0.7 rmsd) in gray  
 $mF_o-DF_c$  (at 3 rmsd) in purple (negative)  
and green (positive)



**Electron density around HEM A 804:**

$2mF_o-DF_c$  (at 0.7 rmsd) in gray  
 $mF_o-DF_c$  (at 3 rmsd) in purple (negative)  
and green (positive)



## 6.5 Other polymers [i](#)

There are no such residues in this entry.