



Full wwPDB X-ray Structure Validation Report ⓘ

Aug 2, 2022 – 10:11 AM JST

PDB ID : 7Y0G
Title : Crystal structure of anti-mPEG h15-2b Fab
Authors : Chang, C.Y.; Nguyen, T.M.T.; Lin, E.C.; Su, Y.C.
Deposited on : 2022-06-05
Resolution : 2.08 Å(reported)

This is a Full wwPDB X-ray Structure Validation Report for a publicly released PDB entry.

We welcome your comments at validation@mail.wwpdb.org

A user guide is available at

<https://www.wwpdb.org/validation/2017/XrayValidationReportHelp>

with specific help available everywhere you see the ⓘ symbol.

The types of validation reports are described at <http://www.wwpdb.org/validation/2017/FAQs#types>.

The following versions of software and data (see [references ⓘ](#)) were used in the production of this report:

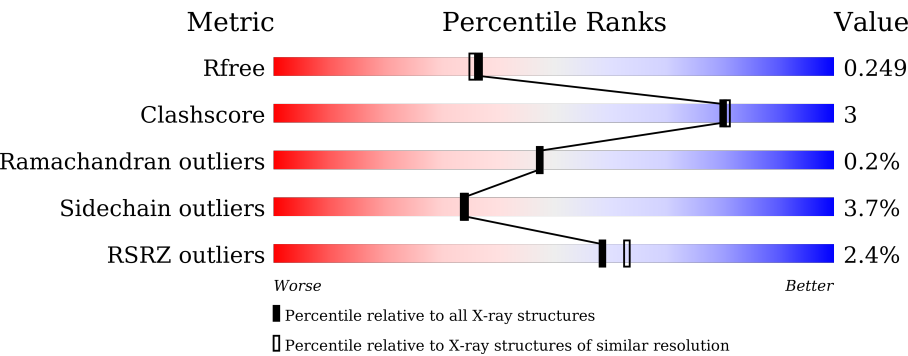
MolProbity : 4.02b-467
Mogul : 1.8.5 (274361), CSD as541be (2020)
Xtriage (Phenix) : 1.13
EDS : 2.29
buster-report : 1.1.7 (2018)
Percentile statistics : 20191225.v01 (using entries in the PDB archive December 25th 2019)
Refmac : 5.8.0158
CCP4 : 7.0.044 (Gargrove)
Ideal geometry (proteins) : Engh & Huber (2001)
Ideal geometry (DNA, RNA) : Parkinson et al. (1996)
Validation Pipeline (wwPDB-VP) : 2.29

1 Overall quality at a glance i

The following experimental techniques were used to determine the structure:
X-RAY DIFFRACTION

The reported resolution of this entry is 2.08 Å.

Percentile scores (ranging between 0-100) for global validation metrics of the entry are shown in the following graphic. The table shows the number of entries on which the scores are based.



Metric	Whole archive (#Entries)	Similar resolution (#Entries, resolution range(Å))
R_{free}	130704	6189 (2.10-2.06)
Clashscore	141614	6738 (2.10-2.06)
Ramachandran outliers	138981	6663 (2.10-2.06)
Sidechain outliers	138945	6664 (2.10-2.06)
RSRZ outliers	127900	6057 (2.10-2.06)

The table below summarises the geometric issues observed across the polymeric chains and their fit to the electron density. The red, orange, yellow and green segments of the lower bar indicate the fraction of residues that contain outliers for ≥ 3 , 2, 1 and 0 types of geometric quality criteria respectively. A grey segment represents the fraction of residues that are not modelled. The numeric value for each fraction is indicated below the corresponding segment, with a dot representing fractions $\leq 5\%$. The upper red bar (where present) indicates the fraction of residues that have poor fit to the electron density. The numeric value is given above the bar.

Mol	Chain	Length	Quality of chain
1	A	214	<div><div></div><div>96%</div><div></div><div></div></div>
1	D	214	<div><div>3%</div><div></div><div>85%</div><div>12%</div><div></div><div></div></div>
1	G	214	<div><div></div><div>91%</div><div>7%</div><div></div></div>
1	J	214	<div><div>9%</div><div></div><div>83%</div><div>14%</div><div></div><div></div></div>
2	B	229	<div><div></div><div>89%</div><div></div><div>8%</div></div>
2	E	229	<div><div>%</div><div></div><div>86%</div><div>5%</div><div>10%</div></div>

Continued on next page...

Continued from previous page...

Mol	Chain	Length	Quality of chain
2	H	229	<div><div></div><div>86%</div><div>5% • 8%</div></div>
2	K	229	<div><div>5%</div><div></div><div>82%</div><div>7% 10%</div></div>

2 Entry composition

There are 4 unique types of molecules in this entry. The entry contains 13662 atoms, of which 0 are hydrogens and 0 are deuteriums.

In the tables below, the ZeroOcc column contains the number of atoms modelled with zero occupancy, the AltConf column contains the number of residues with at least one atom in alternate conformation and the Trace column contains the number of residues modelled with at most 2 atoms.

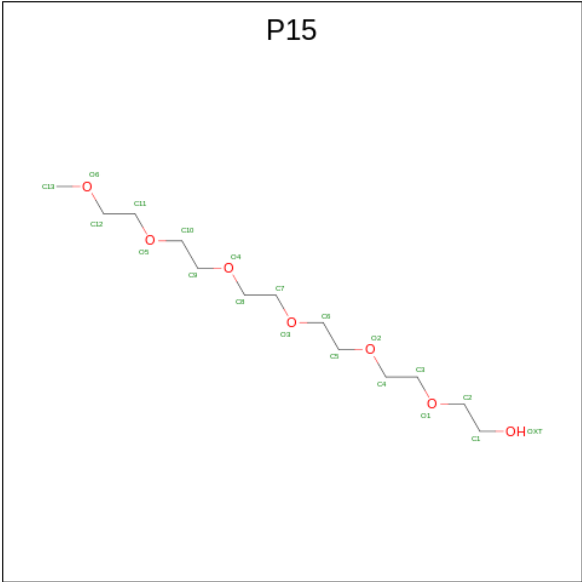
- Molecule 1 is a protein called 15-2b light chain.

Mol	Chain	Residues	Atoms					ZeroOcc	AltConf	Trace
1	A	213	Total	C	N	O	S	0	0	0
			1649	1037	275	332	5			
1	D	211	Total	C	N	O	S	0	0	0
			1636	1030	273	328	5			
1	G	213	Total	C	N	O	S	0	0	0
			1649	1037	275	332	5			
1	J	211	Total	C	N	O	S	0	0	0
			1636	1030	273	328	5			

- Molecule 2 is a protein called 15-2b heavy chain.

Mol	Chain	Residues	Atoms					ZeroOcc	AltConf	Trace
2	B	211	Total	C	N	O	S	0	0	0
			1594	1005	268	315	6			
2	E	207	Total	C	N	O	S	0	0	0
			1569	991	263	309	6			
2	H	211	Total	C	N	O	S	0	0	0
			1594	1005	268	315	6			
2	K	206	Total	C	N	O	S	0	0	0
			1563	988	262	307	6			

- Molecule 3 is 2,5,8,11,14,17-HEXAOXANONADECAN-19-OL (three-letter code: P15) (formula: C₁₃H₂₈O₇) (labeled as "Ligand of Interest" by depositor).



Mol	Chain	Residues	Atoms			ZeroOcc	AltConf
3	B	1	Total	C	O	0	0
			20	13	7		
3	E	1	Total	C	O	0	0
			20	13	7		
3	H	1	Total	C	O	0	0
			20	13	7		
3	K	1	Total	C	O	0	0
			20	13	7		

- Molecule 4 is water.

Mol	Chain	Residues	Atoms		ZeroOcc	AltConf
4	A	100	Total	O	0	0
			100	100		
4	B	110	Total	O	0	0
			110	110		
4	D	47	Total	O	0	0
			47	47		
4	E	98	Total	O	0	0
			98	98		
4	G	112	Total	O	0	0
			112	112		
4	H	113	Total	O	0	0
			113	113		
4	J	27	Total	O	0	0
			27	27		
4	K	85	Total	O	0	0
			85	85		

3 Residue-property plots [i](#)


These plots are drawn for all protein, RNA, DNA and oligosaccharide chains in the entry. The first graphic for a chain summarises the proportions of the various outlier classes displayed in the second graphic. The second graphic shows the sequence view annotated by issues in geometry and electron density. Residues are color-coded according to the number of geometric quality criteria for which they contain at least one outlier: green = 0, yellow = 1, orange = 2 and red = 3 or more. A red dot above a residue indicates a poor fit to the electron density ($RSRZ > 2$). Stretches of 2 or more consecutive residues without any outlier are shown as a green connector. Residues present in the sample, but not in the model, are shown in grey.

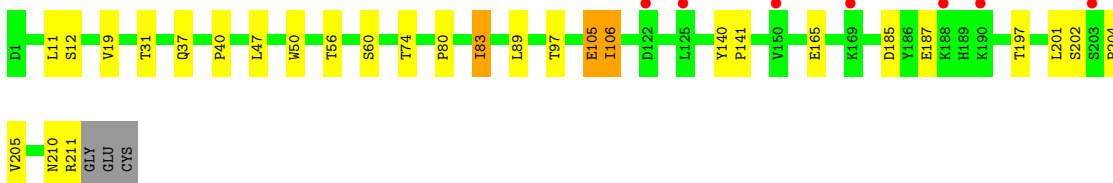
- Molecule 1: 15-2b light chain

Chain A:  96% ..



- Molecule 1: 15-2b light chain

Chain D:  3% 85% 12% ..




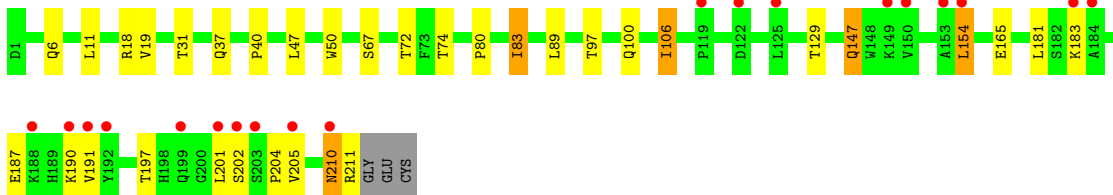
- Molecule 1: 15-2b light chain

Chain G:  91% 7% .




- Molecule 1: 15-2b light chain

Chain J:  9% 83% 14% ..




- Molecule 2: 15-2b heavy chain

Chain B:  89% 8%




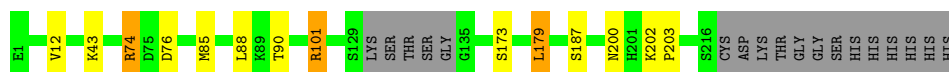
• Molecule 2: 15-2b heavy chain

Chain E:  86% 5% 10%




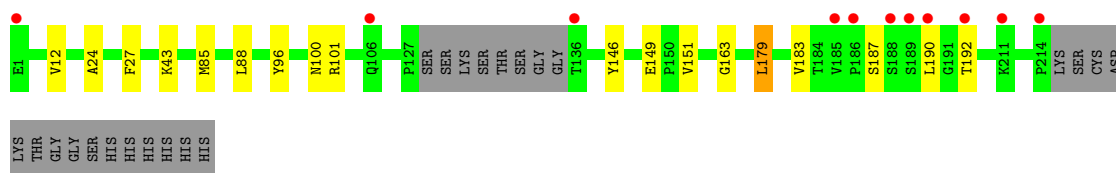
• Molecule 2: 15-2b heavy chain

Chain H:  86% 5% 8%



• Molecule 2: 15-2b heavy chain

Chain K:  82% 5% 7% 10%



4 Data and refinement statistics

Property	Value	Source
Space group	P 1 21 1	Depositor
Cell constants a, b, c, α , β , γ	63.99Å 112.28Å 158.73Å 90.00° 90.58° 90.00°	Depositor
Resolution (Å)	30.00 – 2.08 24.52 – 2.08	Depositor EDS
% Data completeness (in resolution range)	96.0 (30.00-2.08) 93.7 (24.52-2.08)	Depositor EDS
R_{merge}	0.06	Depositor
R_{sym}	(Not available)	Depositor
$\langle I/\sigma(I) \rangle$ ¹	1.30 (at 2.08Å)	Xtriage
Refinement program	REFMAC 5.8.0267	Depositor
R, R_{free}	0.211 , 0.245 0.217 , 0.249	Depositor DCC
R_{free} test set	6507 reflections (5.07%)	wwPDB-VP
Wilson B-factor (Å ²)	24.9	Xtriage
Anisotropy	0.011	Xtriage
Bulk solvent k_{sol} (e/Å ³), B_{sol} (Å ²)	0.35 , 20.8	EDS
L-test for twinning ²	$\langle L \rangle = 0.47$, $\langle L^2 \rangle = 0.30$	Xtriage
Estimated twinning fraction	0.297 for h,-k,-l	Xtriage
F_o, F_c correlation	0.93	EDS
Total number of atoms	13662	wwPDB-VP
Average B, all atoms (Å ²)	30.0	wwPDB-VP

Xtriage's analysis on translational NCS is as follows: *The largest off-origin peak in the Patterson function is 3.16% of the height of the origin peak. No significant pseudotranslation is detected.*

¹Intensities estimated from amplitudes.

²Theoretical values of $\langle |L| \rangle$, $\langle L^2 \rangle$ for acentric reflections are 0.5, 0.333 respectively for untwinned datasets, and 0.375, 0.2 for perfectly twinned datasets.

5 Model quality [i](#)

5.1 Standard geometry [i](#)

Bond lengths and bond angles in the following residue types are not validated in this section: P15

The Z score for a bond length (or angle) is the number of standard deviations the observed value is removed from the expected value. A bond length (or angle) with $|Z| > 5$ is considered an outlier worth inspection. RMSZ is the root-mean-square of all Z scores of the bond lengths (or angles).

Mol	Chain	Bond lengths		Bond angles	
		RMSZ	# $ Z > 5$	RMSZ	# $ Z > 5$
1	A	0.62	0/1687	0.78	0/2294
1	D	0.63	0/1674	0.76	0/2277
1	G	0.64	0/1687	0.78	0/2294
1	J	0.64	0/1674	0.77	0/2277
2	B	0.64	0/1632	0.77	0/2220
2	E	0.66	0/1607	0.76	0/2188
2	H	0.64	0/1632	0.78	0/2220
2	K	0.66	0/1601	0.76	0/2180
All	All	0.64	0/13194	0.77	0/17950

There are no bond length outliers.

There are no bond angle outliers.

There are no chirality outliers.

There are no planarity outliers.

5.2 Too-close contacts [i](#)

In the following table, the Non-H and H(model) columns list the number of non-hydrogen atoms and hydrogen atoms in the chain respectively. The H(added) column lists the number of hydrogen atoms added and optimized by MolProbity. The Clashes column lists the number of clashes within the asymmetric unit, whereas Symm-Clashes lists symmetry-related clashes.

Mol	Chain	Non-H	H(model)	H(added)	Clashes	Symm-Clashes
1	A	1649	0	1602	5	0
1	D	1636	0	1593	13	0
1	G	1649	0	1602	11	0
1	J	1636	0	1593	13	0
2	B	1594	0	1552	3	0

Continued on next page...

Continued from previous page...

Mol	Chain	Non-H	H(model)	H(added)	Clashes	Symm-Clashes
2	E	1569	0	1526	5	0
2	H	1594	0	1552	9	0
2	K	1563	0	1521	8	0
3	B	20	0	28	1	0
3	E	20	0	28	1	0
3	H	20	0	28	4	0
3	K	20	0	28	0	0
4	A	100	0	0	1	0
4	B	110	0	0	0	0
4	D	47	0	0	0	0
4	E	98	0	0	1	0
4	G	112	0	0	2	0
4	H	113	0	0	0	0
4	J	27	0	0	0	0
4	K	85	0	0	1	0
All	All	13662	0	12653	68	0

The all-atom clashscore is defined as the number of clashes found per 1000 atoms (including hydrogen atoms). The all-atom clashscore for this structure is 3.

All (68) close contacts within the same asymmetric unit are listed below, sorted by their clash magnitude.

Atom-1	Atom-2	Interatomic distance (Å)	Clash overlap (Å)
2:K:149:GLU:HG3	4:K:416:HOH:O	1.84	0.77
1:G:197:THR:HG23	4:G:351:HOH:O	1.84	0.76
1:J:83:ILE:HG22	1:J:106:ILE:HD13	1.76	0.67
1:D:83:ILE:HG22	1:D:106:ILE:HD13	1.80	0.63
1:J:210:ASN:O	1:J:211:ARG:HB2	2.03	0.58
2:H:179:LEU:C	2:H:179:LEU:HD12	2.24	0.57
1:D:80:PRO:O	1:D:83:ILE:HG23	2.05	0.56
4:E:425:HOH:O	1:G:197:THR:HG21	2.04	0.56
1:A:37:GLN:HB2	1:A:47:LEU:HD11	1.87	0.55
1:D:201:LEU:HD13	1:D:205:VAL:HG22	1.89	0.55
1:G:29:VAL:HA	1:G:92:ILE:HG12	1.88	0.55
2:K:179:LEU:C	2:K:179:LEU:HD12	2.27	0.54
1:J:6:GLN:H	1:J:100:GLN:HE22	1.55	0.54
1:G:4:MET:SD	1:G:90:GLN:HB2	2.48	0.53
1:A:4:MET:SD	1:A:90:GLN:HB2	2.49	0.52
2:E:179:LEU:HD12	2:E:179:LEU:C	2.31	0.51
1:A:29:VAL:HA	1:A:92:ILE:HG12	1.93	0.51
1:J:40:PRO:HB3	1:J:165:GLU:HG3	1.93	0.51

Continued on next page...

Continued from previous page...

Atom-1	Atom-2	Interatomic distance (Å)	Clash overlap (Å)
1:D:37:GLN:HB2	1:D:47:LEU:HD11	1.94	0.50
1:J:80:PRO:O	1:J:83:ILE:HG23	2.12	0.50
2:E:146:TYR:CE1	2:E:151:VAL:HG13	2.48	0.49
1:G:37:GLN:HB2	1:G:47:LEU:HD11	1.94	0.49
2:B:12:VAL:HG11	2:B:88:LEU:HD13	1.94	0.48
2:K:12:VAL:HG11	2:K:88:LEU:HD13	1.96	0.48
1:J:191:VAL:HG22	1:J:210:ASN:HB3	1.96	0.48
1:J:31:THR:O	1:J:50:TRP:HA	2.14	0.48
1:A:29:VAL:HG12	1:A:92:ILE:HD11	1.95	0.47
2:K:163:GLY:O	2:K:183:VAL:HA	2.15	0.47
1:D:210:ASN:O	1:D:211:ARG:HB2	2.14	0.47
2:E:101:ARG:HB3	3:E:301:P15:H82	1.96	0.47
1:G:31:THR:O	1:G:50:TRP:HA	2.14	0.47
1:G:149:LYS:HG3	4:G:355:HOH:O	2.14	0.46
1:D:12:SER:HA	1:D:105:GLU:O	2.14	0.46
2:H:12:VAL:HG11	2:H:88:LEU:HD13	1.97	0.46
1:G:32:ALA:HB3	1:G:92:ILE:HG23	1.96	0.46
4:A:312:HOH:O	2:B:144:LYS:HE2	2.16	0.46
1:J:89:LEU:HD22	1:J:97:THR:O	2.16	0.46
2:H:74:ARG:HD3	2:H:76:ASP:OD1	2.16	0.46
1:D:40:PRO:HB3	1:D:165:GLU:HG3	1.99	0.45
2:K:100:ASN:O	2:K:101:ARG:HB2	2.17	0.45
1:D:89:LEU:C	1:D:89:LEU:HD13	2.37	0.44
1:J:147:GLN:HG2	1:J:154:LEU:HD11	1.98	0.44
2:H:101:ARG:O	3:H:301:P15:H92	2.17	0.44
2:H:101:ARG:CZ	3:H:301:P15:H102	2.48	0.44
1:G:11:LEU:HD22	1:G:104:LEU:CD1	2.48	0.44
2:K:85:MET:HE1	2:K:96:TYR:CZ	2.54	0.43
3:B:301:P15:H132	3:B:301:P15:H111	1.74	0.43
1:D:89:LEU:HD22	1:D:97:THR:O	2.19	0.43
1:G:7:SER:HA	1:G:8:PRO:HA	1.86	0.43
2:H:101:ARG:NH1	3:H:301:P15:H51	2.33	0.43
1:D:31:THR:O	1:D:50:TRP:HA	2.19	0.42
2:H:85:MET:HE2	2:H:88:LEU:HD21	2.01	0.42
2:H:202:LYS:N	2:H:203:PRO:CD	2.82	0.42
1:J:37:GLN:HB2	1:J:47:LEU:HD11	2.01	0.42
2:H:101:ARG:NE	3:H:301:P15:H102	2.34	0.42
1:A:136:LEU:HD12	1:A:136:LEU:N	2.35	0.42
1:G:2:ILE:CD1	1:G:92:ILE:HD11	2.50	0.41
2:K:146:TYR:CE2	2:K:151:VAL:HG13	2.53	0.41
2:E:169:ALA:HA	2:E:179:LEU:HB3	2.02	0.41

Continued on next page...

Continued from previous page...

Atom-1	Atom-2	Interatomic distance (Å)	Clash overlap (Å)
1:J:19:VAL:O	1:J:74:THR:HA	2.21	0.41
1:J:201:LEU:HD13	1:J:205:VAL:HG22	2.02	0.41
1:D:83:ILE:HG22	1:D:106:ILE:CD1	2.50	0.41
2:K:24:ALA:HB1	2:K:27:PHE:CZ	2.55	0.41
1:J:100:GLN:NE2	1:J:100:GLN:H	2.19	0.41
2:B:85:MET:HE2	2:B:88:LEU:HD21	2.03	0.40
2:E:100:ASN:O	2:E:101:ARG:HB2	2.21	0.40
1:D:19:VAL:O	1:D:74:THR:HA	2.22	0.40
1:D:140:TYR:CG	1:D:141:PRO:HA	2.56	0.40

There are no symmetry-related clashes.

5.3 Torsion angles

5.3.1 Protein backbone

In the following table, the Percentiles column shows the percent Ramachandran outliers of the chain as a percentile score with respect to all X-ray entries followed by that with respect to entries of similar resolution.

The Analysed column shows the number of residues for which the backbone conformation was analysed, and the total number of residues.

Mol	Chain	Analysed	Favoured	Allowed	Outliers	Percentiles	
1	A	211/214 (99%)	203 (96%)	8 (4%)	0	100	100
1	D	209/214 (98%)	199 (95%)	9 (4%)	1 (0%)	29	25
1	G	211/214 (99%)	201 (95%)	10 (5%)	0	100	100
1	J	209/214 (98%)	201 (96%)	7 (3%)	1 (0%)	29	25
2	B	207/229 (90%)	205 (99%)	1 (0%)	1 (0%)	29	25
2	E	203/229 (89%)	199 (98%)	4 (2%)	0	100	100
2	H	207/229 (90%)	202 (98%)	4 (2%)	1 (0%)	29	25
2	K	202/229 (88%)	197 (98%)	5 (2%)	0	100	100
All	All	1659/1772 (94%)	1607 (97%)	48 (3%)	4 (0%)	47	47

All (4) Ramachandran outliers are listed below:

Mol	Chain	Res	Type
1	J	204	PRO

Continued on next page...

Continued from previous page...

Mol	Chain	Res	Type
1	D	204	PRO
2	B	145	ASP
2	H	101	ARG

5.3.2 Protein sidechains ⓘ

In the following table, the Percentiles column shows the percent sidechain outliers of the chain as a percentile score with respect to all X-ray entries followed by that with respect to entries of similar resolution.

The Analysed column shows the number of residues for which the sidechain conformation was analysed, and the total number of residues.

Mol	Chain	Analysed	Rotameric	Outliers	Percentiles	
1	A	187/188 (100%)	184 (98%)	3 (2%)	62	67
1	D	186/188 (99%)	176 (95%)	10 (5%)	22	19
1	G	187/188 (100%)	181 (97%)	6 (3%)	39	40
1	J	186/188 (99%)	170 (91%)	16 (9%)	10	6
2	B	179/194 (92%)	177 (99%)	2 (1%)	73	78
2	E	176/194 (91%)	171 (97%)	5 (3%)	43	46
2	H	179/194 (92%)	172 (96%)	7 (4%)	32	32
2	K	175/194 (90%)	170 (97%)	5 (3%)	42	44
All	All	1455/1528 (95%)	1401 (96%)	54 (4%)	34	34

All (54) residues with a non-rotameric sidechain are listed below:

Mol	Chain	Res	Type
1	A	12	SER
1	A	90	GLN
1	A	92	ILE
2	B	64	GLU
2	B	200	ASN
1	D	11	LEU
1	D	56	THR
1	D	60	SER
1	D	83	ILE
1	D	105	GLU
1	D	106	ILE
1	D	185	ASP

Continued on next page...

Continued from previous page...

Mol	Chain	Res	Type
1	D	187	GLU
1	D	197	THR
1	D	202	SER
2	E	118	LYS
2	E	189	SER
2	E	192	THR
2	E	194	THR
2	E	213	GLU
1	G	1	ASP
1	G	30	ASN
1	G	83	ILE
1	G	90	GLN
1	G	92	ILE
1	G	197	THR
2	H	43	LYS
2	H	74	ARG
2	H	90	THR
2	H	173	SER
2	H	179	LEU
2	H	187	SER
2	H	200	ASN
1	J	11	LEU
1	J	18	ARG
1	J	67	SER
1	J	72	THR
1	J	83	ILE
1	J	106	ILE
1	J	129	THR
1	J	147	GLN
1	J	154	LEU
1	J	181	LEU
1	J	183	LYS
1	J	187	GLU
1	J	190	LYS
1	J	197	THR
1	J	202	SER
1	J	210	ASN
2	K	43	LYS
2	K	179	LEU
2	K	187	SER
2	K	190	LEU
2	K	192	THR

Sometimes sidechains can be flipped to improve hydrogen bonding and reduce clashes. All (8) such sidechains are listed below:

Mol	Chain	Res	Type
2	B	165	HIS
2	B	200	ASN
1	D	124	GLN
1	D	160	GLN
2	H	165	HIS
1	J	100	GLN
1	J	155	GLN
1	J	160	GLN

5.3.3 RNA [i](#)

There are no RNA molecules in this entry.

5.4 Non-standard residues in protein, DNA, RNA chains [i](#)

There are no non-standard protein/DNA/RNA residues in this entry.

5.5 Carbohydrates [i](#)

There are no monosaccharides in this entry.

5.6 Ligand geometry [i](#)

4 ligands are modelled in this entry.

In the following table, the Counts columns list the number of bonds (or angles) for which Mogul statistics could be retrieved, the number of bonds (or angles) that are observed in the model and the number of bonds (or angles) that are defined in the Chemical Component Dictionary. The Link column lists molecule types, if any, to which the group is linked. The Z score for a bond length (or angle) is the number of standard deviations the observed value is removed from the expected value. A bond length (or angle) with $|Z| > 2$ is considered an outlier worth inspection. RMSZ is the root-mean-square of all Z scores of the bond lengths (or angles).

Mol	Type	Chain	Res	Link	Bond lengths			Bond angles		
					Counts	RMSZ	$\# Z > 2$	Counts	RMSZ	$\# Z > 2$
3	P15	K	301	-	19,19,19	0.53	0	18,18,18	0.96	0
3	P15	B	301	-	19,19,19	0.47	0	18,18,18	1.24	1 (5%)
3	P15	H	301	-	19,19,19	0.50	0	18,18,18	0.93	0
3	P15	E	301	-	19,19,19	0.57	0	18,18,18	0.85	0

In the following table, the Chirals column lists the number of chiral outliers, the number of chiral centers analysed, the number of these observed in the model and the number defined in the Chemical Component Dictionary. Similar counts are reported in the Torsion and Rings columns. '-' means no outliers of that kind were identified.

Mol	Type	Chain	Res	Link	Chirals	Torsions	Rings
3	P15	K	301	-	-	6/17/17/17	-
3	P15	B	301	-	-	8/17/17/17	-
3	P15	H	301	-	-	10/17/17/17	-
3	P15	E	301	-	-	5/17/17/17	-

There are no bond length outliers.

All (1) bond angle outliers are listed below:

Mol	Chain	Res	Type	Atoms	Z	Observed(°)	Ideal(°)
3	B	301	P15	C10-O5-C11	-3.44	98.37	113.29

There are no chirality outliers.

All (29) torsion outliers are listed below:

Mol	Chain	Res	Type	Atoms
3	E	301	P15	C6-C5-O2-C4
3	B	301	P15	O5-C10-C9-O4
3	E	301	P15	C4-C3-O1-C2
3	H	301	P15	O5-C10-C9-O4
3	H	301	P15	O3-C7-C8-O4
3	H	301	P15	O1-C3-C4-O2
3	E	301	P15	O5-C11-C12-O6
3	K	301	P15	O2-C5-C6-O3
3	B	301	P15	OXT-C1-C2-O1
3	K	301	P15	O1-C3-C4-O2
3	H	301	P15	O5-C11-C12-O6
3	K	301	P15	O5-C11-C12-O6
3	E	301	P15	OXT-C1-C2-O1
3	H	301	P15	OXT-C1-C2-O1
3	H	301	P15	O2-C5-C6-O3
3	B	301	P15	C11-C12-O6-C13
3	K	301	P15	O3-C7-C8-O4
3	K	301	P15	C6-C5-O2-C4
3	H	301	P15	C10-C9-O4-C8
3	B	301	P15	C5-C6-O3-C7
3	H	301	P15	C5-C6-O3-C7
3	B	301	P15	C1-C2-O1-C3

Continued on next page...

Continued from previous page...

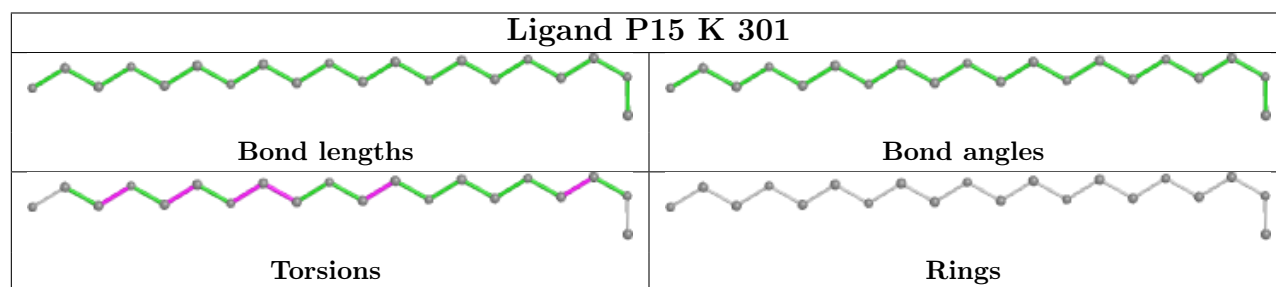
Mol	Chain	Res	Type	Atoms
3	H	301	P15	C12-C11-O5-C10
3	B	301	P15	O2-C5-C6-O3
3	E	301	P15	O1-C3-C4-O2
3	K	301	P15	C1-C2-O1-C3
3	B	301	P15	O5-C11-C12-O6
3	H	301	P15	C4-C3-O1-C2
3	B	301	P15	C6-C5-O2-C4

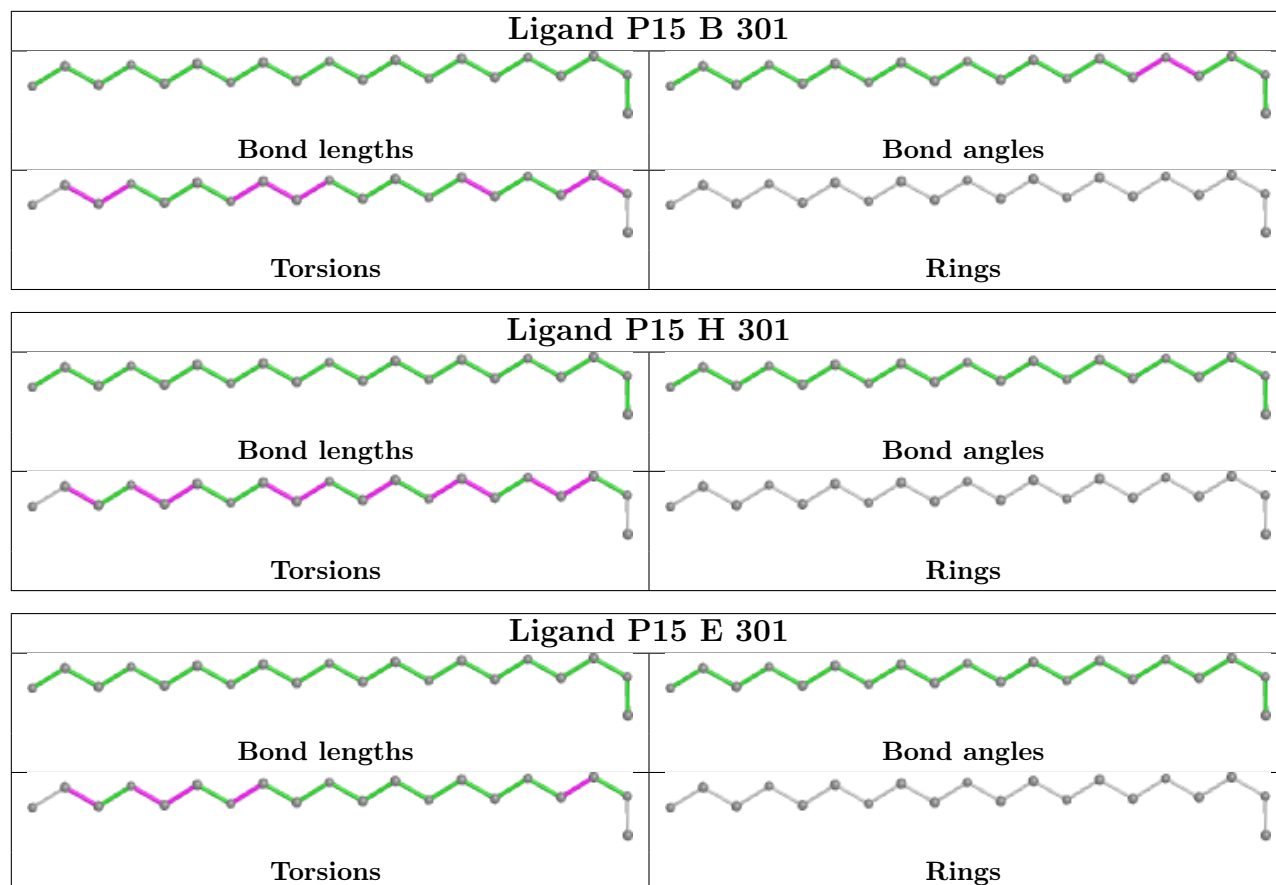
There are no ring outliers.

3 monomers are involved in 6 short contacts:

Mol	Chain	Res	Type	Clashes	Symm-Clashes
3	B	301	P15	1	0
3	H	301	P15	4	0
3	E	301	P15	1	0

The following is a two-dimensional graphical depiction of Mogul quality analysis of bond lengths, bond angles, torsion angles, and ring geometry for all instances of the Ligand of Interest. In addition, ligands with molecular weight > 250 and outliers as shown on the validation Tables will also be included. For torsion angles, if less than 5% of the Mogul distribution of torsion angles is within 10 degrees of the torsion angle in question, then that torsion angle is considered an outlier. Any bond that is central to one or more torsion angles identified as an outlier by Mogul will be highlighted in the graph. For rings, the root-mean-square deviation (RMSD) between the ring in question and similar rings identified by Mogul is calculated over all ring torsion angles. If the average RMSD is greater than 60 degrees and the minimal RMSD between the ring in question and any Mogul-identified rings is also greater than 60 degrees, then that ring is considered an outlier. The outliers are highlighted in purple. The color gray indicates Mogul did not find sufficient equivalents in the CSD to analyse the geometry.





5.7 Other polymers [i](#)

There are no such residues in this entry.

5.8 Polymer linkage issues [i](#)

There are no chain breaks in this entry.

6 Fit of model and data ⓘ

6.1 Protein, DNA and RNA chains ⓘ

In the following table, the column labelled ‘#RSRZ > 2’ contains the number (and percentage) of RSRZ outliers, followed by percent RSRZ outliers for the chain as percentile scores relative to all X-ray entries and entries of similar resolution. The OWAB column contains the minimum, median, 95th percentile and maximum values of the occupancy-weighted average B-factor per residue. The column labelled ‘Q < 0.9’ lists the number of (and percentage) of residues with an average occupancy less than 0.9.

Mol	Chain	Analysed	<RSRZ>	#RSRZ>2	OWAB(Å ²)	Q<0.9
1	A	213/214 (99%)	-0.02	0 100 100	13, 26, 45, 58	0
1	D	211/214 (98%)	0.22	7 (3%) 46 52	18, 34, 65, 84	0
1	G	213/214 (99%)	-0.17	1 (0%) 91 92	13, 24, 40, 63	0
1	J	211/214 (98%)	0.39	19 (9%) 9 11	19, 39, 74, 86	0
2	B	211/229 (92%)	-0.13	0 100 100	13, 26, 43, 60	0
2	E	207/229 (90%)	-0.08	2 (0%) 82 84	14, 26, 48, 65	0
2	H	211/229 (92%)	-0.19	0 100 100	14, 24, 39, 57	0
2	K	206/229 (89%)	0.09	11 (5%) 26 31	14, 30, 63, 78	0
All	All	1683/1772 (94%)	0.01	40 (2%) 59 63	13, 28, 59, 86	0

All (40) RSRZ outliers are listed below:

Mol	Chain	Res	Type	RSRZ
2	E	190	LEU	4.6
1	J	190	LYS	3.8
2	K	136	THR	3.6
2	K	214	PRO	3.6
2	K	192	THR	3.2
1	D	190	LYS	3.2
2	K	188	SER	3.1
1	J	191	VAL	3.0
2	K	211	LYS	3.0
1	J	150	VAL	2.9
1	D	203	SER	2.9
1	J	210	ASN	2.9
1	J	202	SER	2.8
1	D	122	ASP	2.8
1	J	184	ALA	2.8
2	K	1	GLU	2.7

Continued on next page...

Continued from previous page...

Mol	Chain	Res	Type	RSRZ
1	D	188	LYS	2.6
1	J	149	LYS	2.6
1	J	119	PRO	2.6
1	J	188	LYS	2.6
1	J	154	LEU	2.6
1	J	192	TYR	2.5
2	K	186	PRO	2.4
1	G	212	GLY	2.4
1	J	201	LEU	2.3
2	K	185	VAL	2.3
1	J	203	SER	2.3
1	D	125	LEU	2.3
1	J	205	VAL	2.3
2	K	189	SER	2.3
1	D	169	LYS	2.3
2	K	106	GLN	2.3
1	J	153	ALA	2.2
1	D	150	VAL	2.1
1	J	183	LYS	2.1
2	K	190	LEU	2.1
1	J	199	GLN	2.0
1	J	125	LEU	2.0
1	J	122	ASP	2.0
2	E	214	PRO	2.0

6.2 Non-standard residues in protein, DNA, RNA chains [i](#)

There are no non-standard protein/DNA/RNA residues in this entry.

6.3 Carbohydrates [i](#)

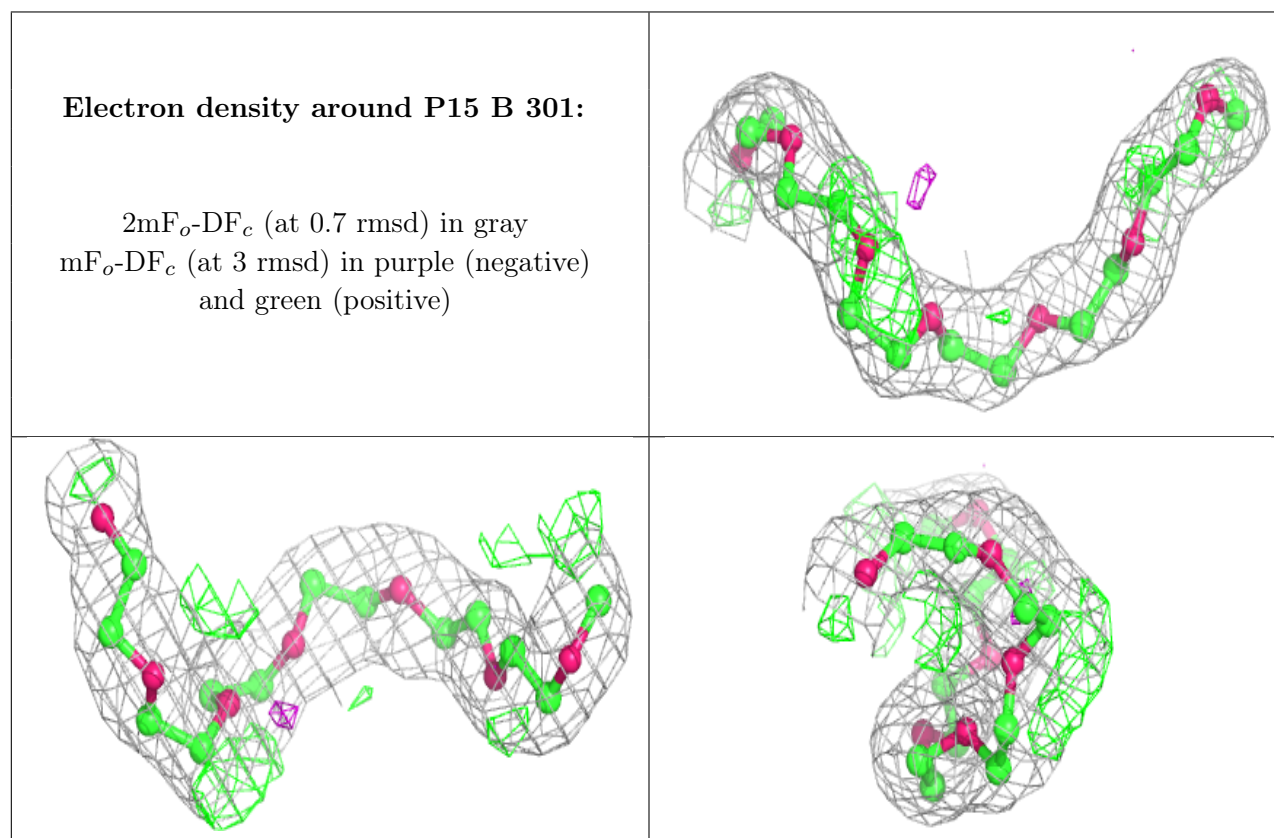
There are no monosaccharides in this entry.

6.4 Ligands [i](#)

In the following table, the Atoms column lists the number of modelled atoms in the group and the number defined in the chemical component dictionary. The B-factors column lists the minimum, median, 95th percentile and maximum values of B factors of atoms in the group. The column labelled 'Q< 0.9' lists the number of atoms with occupancy less than 0.9.

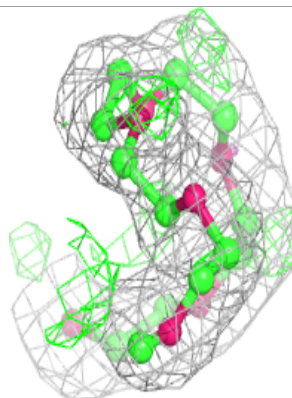
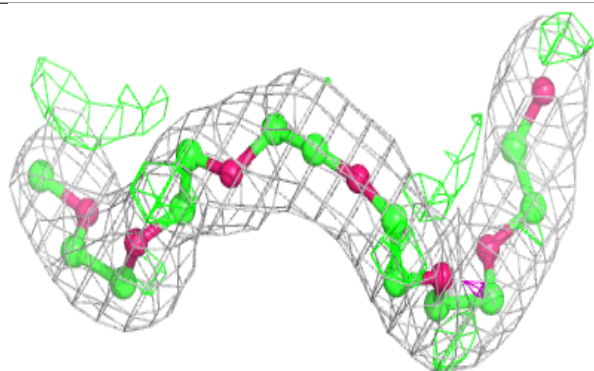
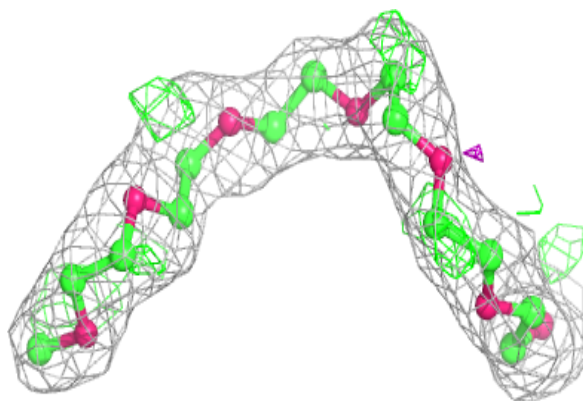
Mol	Type	Chain	Res	Atoms	RSCC	RSR	B-factors(\AA^2)	Q<0.9
3	P15	B	301	20/20	0.86	0.16	38,42,46,48	0
3	P15	H	301	20/20	0.87	0.15	34,38,39,41	0
3	P15	E	301	20/20	0.89	0.13	31,33,35,37	0
3	P15	K	301	20/20	0.90	0.14	37,38,42,42	0

The following is a graphical depiction of the model fit to experimental electron density of all instances of the Ligand of Interest. In addition, ligands with molecular weight > 250 and outliers as shown on the geometry validation Tables will also be included. Each fit is shown from different orientation to approximate a three-dimensional view.

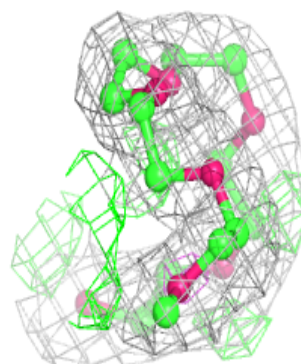
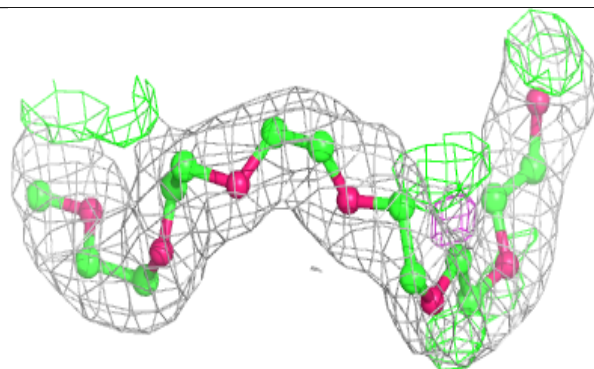
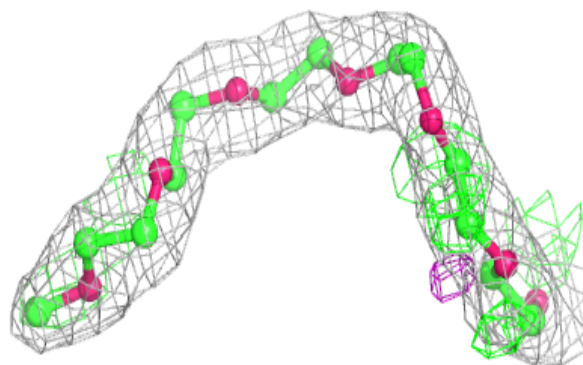


Electron density around P15 H 301:

$2mF_o-DF_c$ (at 0.7 rmsd) in gray
 mF_o-DF_c (at 3 rmsd) in purple (negative)
and green (positive)

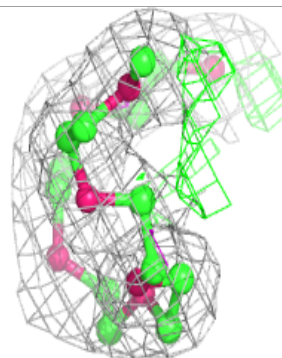
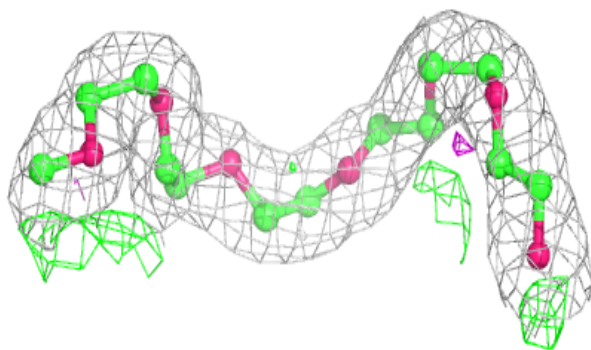
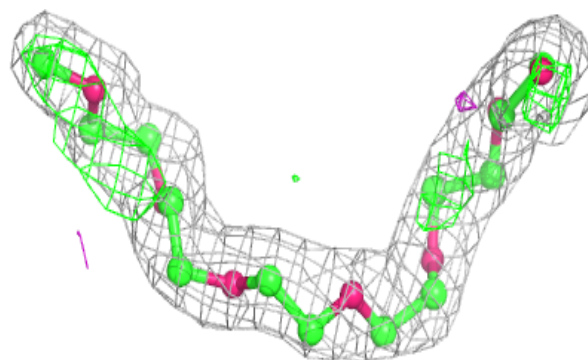
**Electron density around P15 E 301:**

$2mF_o-DF_c$ (at 0.7 rmsd) in gray
 mF_o-DF_c (at 3 rmsd) in purple (negative)
and green (positive)



Electron density around P15 K 301:

$2mF_o-DF_c$ (at 0.7 rmsd) in gray
 mF_o-DF_c (at 3 rmsd) in purple (negative)
and green (positive)



6.5 Other polymers [i](#)

There are no such residues in this entry.