



Full wwPDB X-ray Structure Validation Report ⓘ

May 27, 2020 – 12:38 am BST

PDB ID : 4Y2T
Title : Structure of soluble epoxide hydrolase in complex with 3-[4-(benzyloxy)phenyl]propan-1-ol
Authors : Amano, Y.; Yamaguchi, T.
Deposited on : 2015-02-10
Resolution : 2.40 Å(reported)

This is a Full wwPDB X-ray Structure Validation Report for a publicly released PDB entry.

We welcome your comments at validation@mail.wwpdb.org

A user guide is available at

<https://www.wwpdb.org/validation/2017/XrayValidationReportHelp>

with specific help available everywhere you see the ⓘ symbol.

The following versions of software and data (see [references ⓘ](#)) were used in the production of this report:

MolProbity : 4.02b-467
Mogul : 1.8.5 (274361), CSD as541be (2020)
Xtriage (Phenix) : 1.13
EDS : 2.11
Percentile statistics : 20191225.v01 (using entries in the PDB archive December 25th 2019)
Refmac : 5.8.0158
CCP4 : 7.0.044 (Gargrove)
Ideal geometry (proteins) : Engh & Huber (2001)
Ideal geometry (DNA, RNA) : Parkinson et al. (1996)
Validation Pipeline (wwPDB-VP) : 2.11

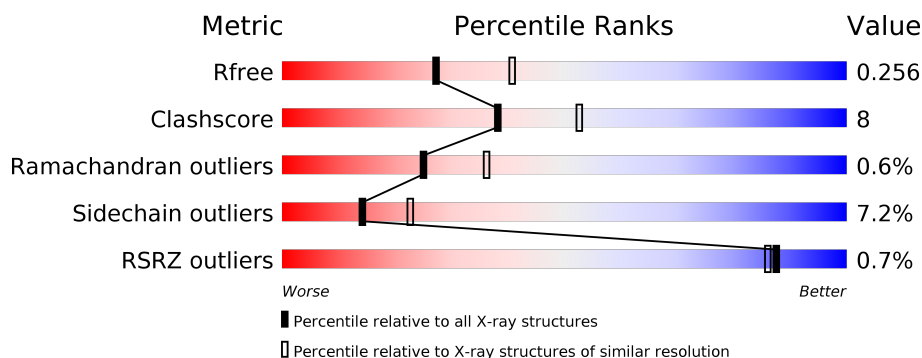
1 Overall quality at a glance

The following experimental techniques were used to determine the structure:

X-RAY DIFFRACTION

The reported resolution of this entry is 2.40 Å.

Percentile scores (ranging between 0-100) for global validation metrics of the entry are shown in the following graphic. The table shows the number of entries on which the scores are based.



Metric	Whole archive (#Entries)	Similar resolution (#Entries, resolution range(Å))
R_{free}	130704	3907 (2.40-2.40)
Clashscore	141614	4398 (2.40-2.40)
Ramachandran outliers	138981	4318 (2.40-2.40)
Sidechain outliers	138945	4319 (2.40-2.40)
RSRZ outliers	127900	3811 (2.40-2.40)

The table below summarises the geometric issues observed across the polymeric chains and their fit to the electron density. The red, orange, yellow and green segments on the lower bar indicate the fraction of residues that contain outliers for ≥ 3 , 2, 1 and 0 types of geometric quality criteria respectively. A grey segment represents the fraction of residues that are not modelled. The numeric value for each fraction is indicated below the corresponding segment, with a dot representing fractions $\leq 5\%$. The upper red bar (where present) indicates the fraction of residues that have poor fit to the electron density. The numeric value is given above the bar.

Mol	Chain	Length	Quality of chain
1	A	561	<div> <div></div> <div> <div></div> <div>79%</div> <div>15%</div> <div>• •</div> </div> </div>

2 Entry composition

There are 4 unique types of molecules in this entry. The entry contains 4389 atoms, of which 0 are hydrogens and 0 are deuteriums.

In the tables below, the ZeroOcc column contains the number of atoms modelled with zero occupancy, the AltConf column contains the number of residues with at least one atom in alternate conformation and the Trace column contains the number of residues modelled with at most 2 atoms.

- Molecule 1 is a protein called Bifunctional epoxide hydrolase 2.

Mol	Chain	Residues	Atoms					ZeroOcc	AltConf	Trace
1	A	546	Total	C	N	O	S	0	0	0
			4323	2771	728	788	36			

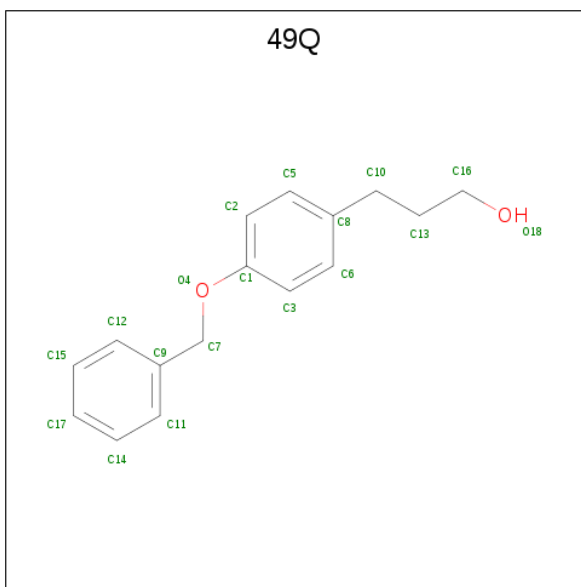
There are 6 discrepancies between the modelled and reference sequences:

Chain	Residue	Modelled	Actual	Comment	Reference
A	556	HIS	-	expression tag	UNP P34913
A	557	HIS	-	expression tag	UNP P34913
A	558	HIS	-	expression tag	UNP P34913
A	559	HIS	-	expression tag	UNP P34913
A	560	HIS	-	expression tag	UNP P34913
A	561	HIS	-	expression tag	UNP P34913

- Molecule 2 is MAGNESIUM ION (three-letter code: MG) (formula: Mg).

Mol	Chain	Residues	Atoms		ZeroOcc	AltConf
2	A	1	Total	Mg	0	0
			1	1		

- Molecule 3 is 3-[4-(benzyloxy)phenyl]propan-1-ol (three-letter code: 49Q) (formula: C₁₆H₁₈O₂).



Mol	Chain	Residues	Atoms			ZeroOcc	AltConf
3	A	1	Total	C	O	0	0
			18	16	2		

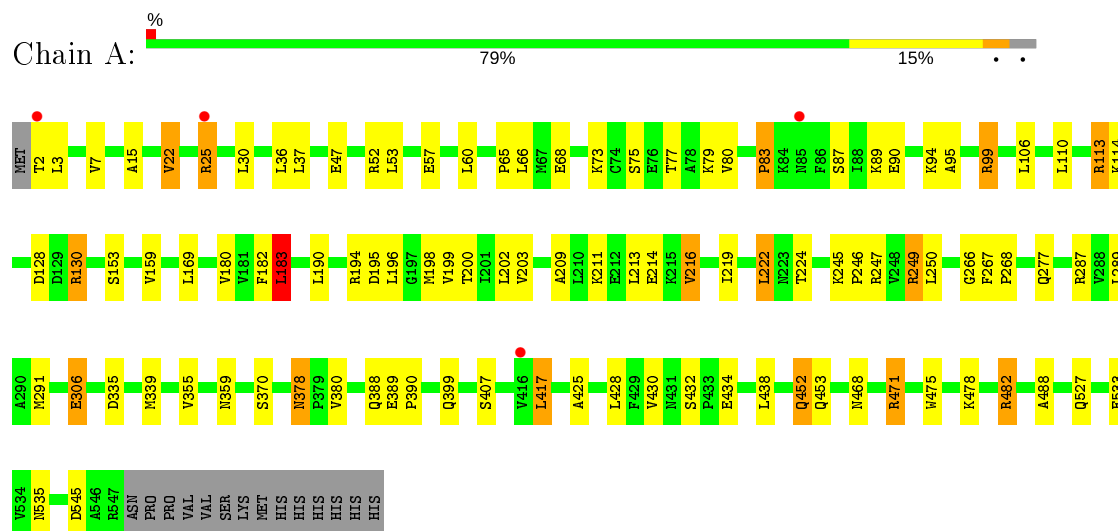
- Molecule 4 is water.

Mol	Chain	Residues	Atoms		ZeroOcc	AltConf
4	A	47	Total	O	0	0
			47	47		

3 Residue-property plots [i](#)

These plots are drawn for all protein, RNA and DNA chains in the entry. The first graphic for a chain summarises the proportions of the various outlier classes displayed in the second graphic. The second graphic shows the sequence view annotated by issues in geometry and electron density. Residues are color-coded according to the number of geometric quality criteria for which they contain at least one outlier: green = 0, yellow = 1, orange = 2 and red = 3 or more. A red dot above a residue indicates a poor fit to the electron density ($RSRZ > 2$). Stretches of 2 or more consecutive residues without any outlier are shown as a green connector. Residues present in the sample, but not in the model, are shown in grey.

- Molecule 1: Bifunctional epoxide hydrolase 2



4 Data and refinement statistics

Property	Value	Source
Space group	P 65 2 2	Depositor
Cell constants a, b, c, α , β , γ	92.37Å 92.37Å 244.19Å 90.00° 90.00° 120.00°	Depositor
Resolution (Å)	76.02 – 2.40 40.17 – 2.40	Depositor EDS
% Data completeness (in resolution range)	99.0 (76.02-2.40) 99.0 (40.17-2.40)	Depositor EDS
R_{merge}	(Not available)	Depositor
R_{sym}	(Not available)	Depositor
$\langle I/\sigma(I) \rangle$ ¹	3.53 (at 2.39Å)	Xtriage
Refinement program	REFMAC 5.8.0049	Depositor
R, R_{free}	0.194 , 0.260 0.193 , 0.256	Depositor DCC
R_{free} test set	1264 reflections (5.09%)	wwPDB-VP
Wilson B-factor (Å ²)	31.8	Xtriage
Anisotropy	0.024	Xtriage
Bulk solvent k_{sol} (e/Å ³), B_{sol} (Å ²)	0.38 , 35.5	EDS
L-test for twinning ²	$\langle L \rangle = 0.49$, $\langle L^2 \rangle = 0.33$	Xtriage
Estimated twinning fraction	No twinning to report.	Xtriage
F_o, F_c correlation	0.95	EDS
Total number of atoms	4389	wwPDB-VP
Average B, all atoms (Å ²)	31.0	wwPDB-VP

Xtriage's analysis on translational NCS is as follows: *The largest off-origin peak in the Patterson function is 4.10% of the height of the origin peak. No significant pseudotranslation is detected.*

¹Intensities estimated from amplitudes.

²Theoretical values of $\langle |L| \rangle$, $\langle L^2 \rangle$ for acentric reflections are 0.5, 0.333 respectively for untwinned datasets, and 0.375, 0.2 for perfectly twinned datasets.

5 Model quality

5.1 Standard geometry

Bond lengths and bond angles in the following residue types are not validated in this section: MG, 49Q

The Z score for a bond length (or angle) is the number of standard deviations the observed value is removed from the expected value. A bond length (or angle) with $|Z| > 5$ is considered an outlier worth inspection. RMSZ is the root-mean-square of all Z scores of the bond lengths (or angles).

Mol	Chain	Bond lengths		Bond angles	
		RMSZ	$\# Z > 5$	RMSZ	$\# Z > 5$
1	A	0.76	0/4428	0.90	10/6000 (0.2%)

Chiral center outliers are detected by calculating the chiral volume of a chiral center and verifying if the center is modelled as a planar moiety or with the opposite hand. A planarity outlier is detected by checking planarity of atoms in a peptide group, atoms in a mainchain group or atoms of a sidechain that are expected to be planar.

Mol	Chain	#Chirality outliers	#Planarity outliers
1	A	0	1

There are no bond length outliers.

All (10) bond angle outliers are listed below:

Mol	Chain	Res	Type	Atoms	Z	Observed($^{\circ}$)	Ideal($^{\circ}$)
1	A	287	ARG	NE-CZ-NH2	8.16	124.38	120.30
1	A	471	ARG	NE-CZ-NH2	7.44	124.02	120.30
1	A	183	LEU	CA-CB-CG	6.99	131.37	115.30
1	A	113	ARG	NE-CZ-NH1	-5.74	117.43	120.30
1	A	482	ARG	NE-CZ-NH1	-5.33	117.64	120.30
1	A	428	LEU	CB-CG-CD2	-5.31	101.98	111.00
1	A	130	ARG	NE-CZ-NH1	-5.24	117.68	120.30
1	A	130	ARG	NE-CZ-NH2	5.16	122.88	120.30
1	A	287	ARG	NE-CZ-NH1	-5.09	117.75	120.30
1	A	471	ARG	NE-CZ-NH1	-5.04	117.78	120.30

There are no chirality outliers.

All (1) planarity outliers are listed below:

Mol	Chain	Res	Type	Group
1	A	291	MET	Peptide

5.2 Too-close contacts ⓘ

In the following table, the Non-H and H(model) columns list the number of non-hydrogen atoms and hydrogen atoms in the chain respectively. The H(added) column lists the number of hydrogen atoms added and optimized by MolProbity. The Clashes column lists the number of clashes within the asymmetric unit, whereas Symm-Clashes lists symmetry related clashes.

Mol	Chain	Non-H	H(model)	H(added)	Clashes	Symm-Clashes
1	A	4323	0	4329	66	0
2	A	1	0	0	0	0
3	A	18	0	18	0	0
4	A	47	0	0	2	0
All	All	4389	0	4347	66	0

The all-atom clashscore is defined as the number of clashes found per 1000 atoms (including hydrogen atoms). The all-atom clashscore for this structure is 8.

All (66) close contacts within the same asymmetric unit are listed below, sorted by their clash magnitude.

Atom-1	Atom-2	Interatomic distance (Å)	Clash overlap (Å)
1:A:68:GLU:HG3	4:A:711:HOH:O	1.59	1.02
1:A:378:ASN:HD22	1:A:378:ASN:C	1.84	0.80
1:A:190:LEU:HD22	1:A:200:THR:HB	1.65	0.78
1:A:180:VAL:HG11	1:A:198:MET:CE	2.16	0.76
1:A:277:GLN:HE22	1:A:527:GLN:HB3	1.51	0.75
1:A:2:THR:HG23	1:A:3:LEU:H	1.53	0.73
1:A:60:LEU:HD23	1:A:130:ARG:CD	2.20	0.72
1:A:277:GLN:HG3	1:A:535:ASN:ND2	2.08	0.67
1:A:52:ARG:HD2	1:A:57:GLU:OE2	1.93	0.66
1:A:425:ALA:HB1	1:A:430:VAL:HG21	1.77	0.65
1:A:266:GLY:HA3	1:A:335:ASP:HB3	1.79	0.65
1:A:128:ASP:OD1	1:A:130:ARG:HD3	1.98	0.64
1:A:180:VAL:CG1	1:A:198:MET:HE2	2.30	0.61
1:A:60:LEU:HD23	1:A:130:ARG:HD2	1.81	0.61
1:A:60:LEU:HD23	1:A:130:ARG:HD3	1.81	0.60
1:A:468:ASN:OD1	1:A:471:ARG:NH2	2.36	0.59
1:A:183:LEU:HD11	1:A:213:LEU:HD22	1.85	0.59
1:A:378:ASN:ND2	1:A:380:VAL:HG12	2.18	0.58
1:A:203:VAL:HG22	1:A:209:ALA:HB1	1.86	0.57

Continued on next page...

Continued from previous page...

Atom-1	Atom-2	Interatomic distance (Å)	Clash overlap (Å)
1:A:475:TRP:O	1:A:478:LYS:HG3	2.04	0.57
1:A:180:VAL:CG1	1:A:198:MET:CE	2.81	0.57
1:A:180:VAL:HG11	1:A:198:MET:HE3	1.88	0.55
1:A:378:ASN:HD21	1:A:380:VAL:HG12	1.71	0.55
1:A:7:VAL:HG21	1:A:169:LEU:HD21	1.89	0.54
1:A:22:VAL:HG21	1:A:95:ALA:HB2	1.89	0.54
1:A:378:ASN:ND2	1:A:378:ASN:C	2.58	0.53
1:A:60:LEU:CD2	1:A:130:ARG:HD2	2.38	0.53
1:A:277:GLN:NE2	1:A:527:GLN:HB3	2.21	0.52
1:A:99:ARG:HG2	1:A:99:ARG:O	2.07	0.52
1:A:378:ASN:ND2	1:A:380:VAL:H	2.08	0.52
1:A:339:MET:CE	1:A:339:MET:HA	2.40	0.51
1:A:15:ALA:HB1	1:A:99:ARG:HG3	1.93	0.51
1:A:378:ASN:HD22	1:A:380:VAL:H	1.59	0.50
1:A:417:LEU:HD12	1:A:417:LEU:H	1.77	0.49
1:A:203:VAL:HG22	1:A:209:ALA:CB	2.42	0.49
1:A:355:VAL:O	1:A:488:ALA:HA	2.13	0.49
1:A:199:VAL:HG11	1:A:216:VAL:HG21	1.94	0.49
1:A:452:GLN:HE21	1:A:453:GLN:HE21	1.60	0.48
1:A:214:GLU:HG3	1:A:219:ILE:O	2.14	0.48
1:A:2:THR:HG23	1:A:3:LEU:N	2.24	0.48
1:A:73:LYS:O	1:A:77:THR:HG22	2.13	0.47
1:A:30:LEU:HD13	1:A:83:PRO:HG2	1.96	0.47
1:A:245:LYS:HB2	1:A:246:PRO:HD2	1.96	0.46
1:A:153:SER:HB2	1:A:159:VAL:HG12	1.98	0.46
1:A:388:GLN:O	1:A:390:PRO:HD3	2.17	0.45
1:A:36:LEU:HD12	1:A:37:LEU:HD23	1.99	0.45
1:A:65:PRO:O	1:A:68:GLU:HB2	2.16	0.44
1:A:75:SER:HB2	1:A:80:VAL:HG23	1.98	0.44
1:A:87:SER:OG	1:A:90:GLU:HB2	2.18	0.44
1:A:267:PHE:CD1	1:A:267:PHE:C	2.91	0.44
1:A:87:SER:CB	1:A:90:GLU:HB2	2.48	0.44
1:A:533:GLU:N	1:A:533:GLU:OE1	2.47	0.43
1:A:222:LEU:HD12	1:A:222:LEU:HA	1.71	0.43
1:A:417:LEU:HD12	1:A:417:LEU:N	2.34	0.43
1:A:452:GLN:NE2	1:A:453:GLN:HE21	2.17	0.42
1:A:87:SER:HB3	1:A:90:GLU:HB2	2.01	0.42
1:A:306:GLU:H	1:A:306:GLU:CD	2.22	0.42
1:A:114:LYS:HB3	1:A:114:LYS:HE2	1.80	0.42
1:A:407:SER:O	1:A:417:LEU:HD11	2.20	0.42
1:A:130:ARG:NH1	4:A:733:HOH:O	2.52	0.41

Continued on next page...

Continued from previous page...

Atom-1	Atom-2	Interatomic distance (Å)	Clash overlap (Å)
1:A:25:ARG:HB2	1:A:25:ARG:CZ	2.50	0.41
1:A:277:GLN:HG3	1:A:535:ASN:HD21	1.83	0.41
1:A:389:GLU:O	1:A:390:PRO:C	2.58	0.41
1:A:211:LYS:HG3	1:A:222:LEU:HD23	2.02	0.41
1:A:249:ARG:HG2	1:A:250:LEU:N	2.37	0.40
1:A:7:VAL:HB	1:A:182:PHE:HD1	1.86	0.40

There are no symmetry-related clashes.

5.3 Torsion angles [i](#)

5.3.1 Protein backbone [i](#)

In the following table, the Percentiles column shows the percent Ramachandran outliers of the chain as a percentile score with respect to all X-ray entries followed by that with respect to entries of similar resolution.

The Analysed column shows the number of residues for which the backbone conformation was analysed, and the total number of residues.

Mol	Chain	Analysed	Favoured	Allowed	Outliers	Percentiles	
1	A	544/561 (97%)	527 (97%)	14 (3%)	3 (1%)	25	36

All (3) Ramachandran outliers are listed below:

Mol	Chain	Res	Type
1	A	195	ASP
1	A	83	PRO
1	A	268	PRO

5.3.2 Protein sidechains [i](#)

In the following table, the Percentiles column shows the percent sidechain outliers of the chain as a percentile score with respect to all X-ray entries followed by that with respect to entries of similar resolution.

The Analysed column shows the number of residues for which the sidechain conformation was analysed, and the total number of residues.

Mol	Chain	Analysed	Rotameric	Outliers	Percentiles	
1	A	472/487 (97%)	438 (93%)	34 (7%)	14	23

All (34) residues with a non-rotameric sidechain are listed below:

Mol	Chain	Res	Type
1	A	22	VAL
1	A	25	ARG
1	A	47	GLU
1	A	53	LEU
1	A	66	LEU
1	A	79	LYS
1	A	89	LYS
1	A	94	LYS
1	A	99	ARG
1	A	106	LEU
1	A	110	LEU
1	A	113	ARG
1	A	183	LEU
1	A	194	ARG
1	A	196	LEU
1	A	202	LEU
1	A	216	VAL
1	A	222	LEU
1	A	224	THR
1	A	247	ARG
1	A	249	ARG
1	A	289	LEU
1	A	306	GLU
1	A	359	ASN
1	A	370	SER
1	A	378	ASN
1	A	399	GLN
1	A	417	LEU
1	A	432	SER
1	A	434	GLU
1	A	438	LEU
1	A	452	GLN
1	A	482	ARG
1	A	545	ASP

Some sidechains can be flipped to improve hydrogen bonding and reduce clashes. All (6) such sidechains are listed below:

Mol	Chain	Res	Type
1	A	38	ASN
1	A	277	GLN
1	A	378	ASN
1	A	384	GLN
1	A	452	GLN
1	A	535	ASN

5.3.3 RNA [i](#)

There are no RNA molecules in this entry.

5.4 Non-standard residues in protein, DNA, RNA chains [i](#)

There are no non-standard protein/DNA/RNA residues in this entry.

5.5 Carbohydrates [i](#)

There are no carbohydrates in this entry.

5.6 Ligand geometry [i](#)

Of 2 ligands modelled in this entry, 1 is monoatomic - leaving 1 for Mogul analysis.

In the following table, the Counts columns list the number of bonds (or angles) for which Mogul statistics could be retrieved, the number of bonds (or angles) that are observed in the model and the number of bonds (or angles) that are defined in the Chemical Component Dictionary. The Link column lists molecule types, if any, to which the group is linked. The Z score for a bond length (or angle) is the number of standard deviations the observed value is removed from the expected value. A bond length (or angle) with $|Z| > 2$ is considered an outlier worth inspection. RMSZ is the root-mean-square of all Z scores of the bond lengths (or angles).

Mol	Type	Chain	Res	Link	Bond lengths			Bond angles		
					Counts	RMSZ	$\# Z > 2$	Counts	RMSZ	$\# Z > 2$
3	49Q	A	602	-	19,19,19	0.43	0	23,23,23	1.60	5 (21%)

In the following table, the Chirals column lists the number of chiral outliers, the number of chiral centers analysed, the number of these observed in the model and the number defined in the Chemical Component Dictionary. Similar counts are reported in the Torsion and Rings columns. '-' means no outliers of that kind were identified.

Mol	Type	Chain	Res	Link	Chirals	Torsions	Rings
3	49Q	A	602	-	-	3/9/9/9	0/2/2/2

There are no bond length outliers.

All (5) bond angle outliers are listed below:

Mol	Chain	Res	Type	Atoms	Z	Observed(°)	Ideal(°)
3	A	602	49Q	C6-C3-C1	-3.51	115.44	119.73
3	A	602	49Q	O4-C7-C9	-3.35	99.11	109.16
3	A	602	49Q	C2-C5-C8	-3.09	116.78	121.03
3	A	602	49Q	C6-C8-C5	2.18	121.59	118.17
3	A	602	49Q	C13-C10-C8	-2.18	105.49	113.68

There are no chirality outliers.

All (3) torsion outliers are listed below:

Mol	Chain	Res	Type	Atoms
3	A	602	49Q	C2-C1-O4-C7
3	A	602	49Q	C3-C1-O4-C7
3	A	602	49Q	C8-C10-C13-C16

There are no ring outliers.

No monomer is involved in short contacts.

5.7 Other polymers [i](#)

There are no such residues in this entry.

5.8 Polymer linkage issues [i](#)

There are no chain breaks in this entry.

6 Fit of model and data [i](#)

6.1 Protein, DNA and RNA chains [i](#)

In the following table, the column labelled ‘#RSRZ> 2’ contains the number (and percentage) of RSRZ outliers, followed by percent RSRZ outliers for the chain as percentile scores relative to all X-ray entries and entries of similar resolution. The OWAB column contains the minimum, median, 95th percentile and maximum values of the occupancy-weighted average B-factor per residue. The column labelled ‘Q< 0.9’ lists the number of (and percentage) of residues with an average occupancy less than 0.9.

Mol	Chain	Analysed	<RSRZ>	#RSRZ>2	OWAB(Å ²)	Q<0.9
1	A	546/561 (97%)	-0.46	4 (0%) 87 86	16, 28, 54, 87	0

All (4) RSRZ outliers are listed below:

Mol	Chain	Res	Type	RSRZ
1	A	85	ASN	3.4
1	A	25	ARG	2.6
1	A	2	THR	2.4
1	A	416	VAL	2.1

6.2 Non-standard residues in protein, DNA, RNA chains [i](#)

There are no non-standard protein/DNA/RNA residues in this entry.

6.3 Carbohydrates [i](#)

There are no carbohydrates in this entry.

6.4 Ligands [i](#)

In the following table, the Atoms column lists the number of modelled atoms in the group and the number defined in the chemical component dictionary. The B-factors column lists the minimum, median, 95th percentile and maximum values of B factors of atoms in the group. The column labelled ‘Q< 0.9’ lists the number of atoms with occupancy less than 0.9.

Mol	Type	Chain	Res	Atoms	RSCC	RSR	B-factors(Å ²)	Q<0.9
2	MG	A	601	1/1	0.80	0.12	39,39,39,39	0
3	49Q	A	602	18/18	0.93	0.14	28,37,49,50	0

6.5 Other polymers [i](#)

There are no such residues in this entry.