



Full wwPDB X-ray Structure Validation Report ⓘ

Jun 15, 2020 – 08:39 am BST

PDB ID : 4Y6P
Title : Structure of Plasmodium falciparum DXR in complex with a beta-substituted fosmidomycin analogue, RC177, and manganese
Authors : Sooriyaarachchi, S.; Bergfors, T.; Jones, T.A.; Mowbray, S.L.
Deposited on : 2015-02-13
Resolution : 1.90 Å(reported)

This is a Full wwPDB X-ray Structure Validation Report for a publicly released PDB entry.

We welcome your comments at validation@mail.wwpdb.org

A user guide is available at

<https://www.wwpdb.org/validation/2017/XrayValidationReportHelp>

with specific help available everywhere you see the ⓘ symbol.

The following versions of software and data (see [references ⓘ](#)) were used in the production of this report:

MolProbity : 4.02b-467
Mogul : 1.8.5 (274361), CSD as541be (2020)
Xtriage (Phenix) : 1.13
EDS : 2.11
buster-report : 1.1.7 (2018)
Percentile statistics : 20191225.v01 (using entries in the PDB archive December 25th 2019)
Refmac : 5.8.0158
CCP4 : 7.0.044 (Gargrove)
Ideal geometry (proteins) : Engh & Huber (2001)
Ideal geometry (DNA, RNA) : Parkinson et al. (1996)
Validation Pipeline (wwPDB-VP) : 2.11

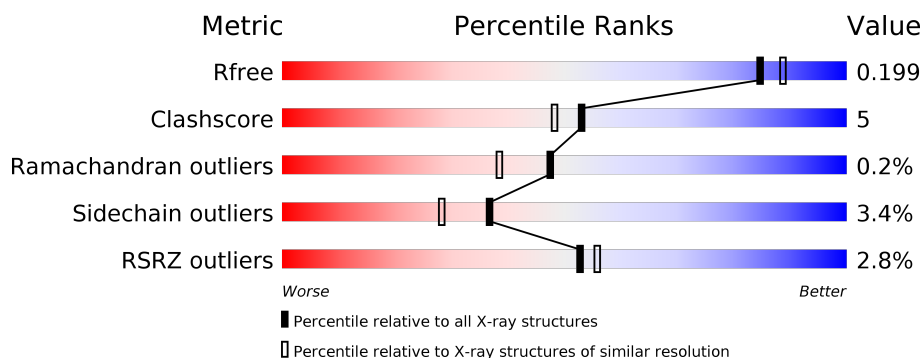
1 Overall quality at a glance ⓘ

The following experimental techniques were used to determine the structure:

X-RAY DIFFRACTION

The reported resolution of this entry is 1.90 Å.

Percentile scores (ranging between 0-100) for global validation metrics of the entry are shown in the following graphic. The table shows the number of entries on which the scores are based.



Metric	Whole archive (#Entries)	Similar resolution (#Entries, resolution range(Å))
R_{free}	130704	6207 (1.90-1.90)
Clashscore	141614	6847 (1.90-1.90)
Ramachandran outliers	138981	6760 (1.90-1.90)
Sidechain outliers	138945	6760 (1.90-1.90)
RSRZ outliers	127900	6082 (1.90-1.90)

The table below summarises the geometric issues observed across the polymeric chains and their fit to the electron density. The red, orange, yellow and green segments on the lower bar indicate the fraction of residues that contain outliers for ≥ 3 , 2, 1 and 0 types of geometric quality criteria respectively. A grey segment represents the fraction of residues that are not modelled. The numeric value for each fraction is indicated below the corresponding segment, with a dot representing fractions $\leq 5\%$. The upper red bar (where present) indicates the fraction of residues that have poor fit to the electron density. The numeric value is given above the bar.

Mol	Chain	Length	Quality of chain
1	A	422	<div> <div>4%</div> <div> <div></div> <div>86%</div> <div>10%</div> <div>••</div> </div> </div>
1	B	422	<div> <div>%</div> <div> <div></div> <div>84%</div> <div>12%</div> <div>••</div> </div> </div>

2 Entry composition

There are 6 unique types of molecules in this entry. The entry contains 7235 atoms, of which 0 are hydrogens and 0 are deuteriums.

In the tables below, the ZeroOcc column contains the number of atoms modelled with zero occupancy, the AltConf column contains the number of residues with at least one atom in alternate conformation and the Trace column contains the number of residues modelled with at most 2 atoms.

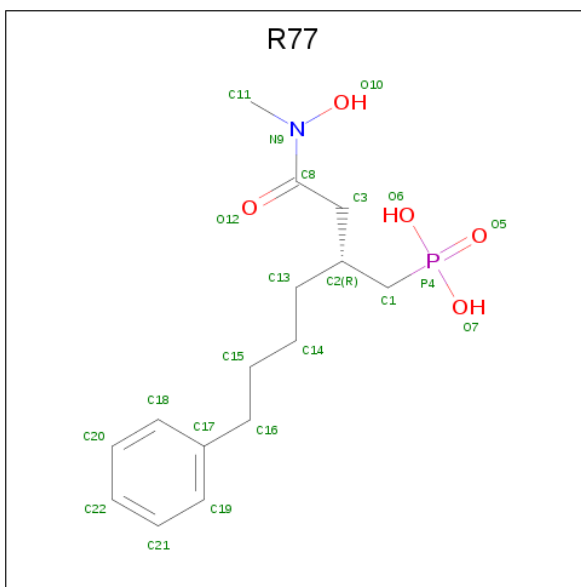
- Molecule 1 is a protein called 1-deoxy-D-xylulose 5-phosphate reductoisomerase, apicoplast.

Mol	Chain	Residues	Atoms					ZeroOcc	AltConf	Trace
1	A	410	Total	C	N	O	S	0	4	0
			3294	2116	539	619	20			
1	B	410	Total	C	N	O	S	30	6	0
			3316	2127	543	626	20			

There are 16 discrepancies between the modelled and reference sequences:

Chain	Residue	Modelled	Actual	Comment	Reference
A	67	MET	-	initiating methionine	UNP Q8IKG4
A	68	ALA	-	expression tag	UNP Q8IKG4
A	69	HIS	-	expression tag	UNP Q8IKG4
A	70	HIS	-	expression tag	UNP Q8IKG4
A	71	HIS	-	expression tag	UNP Q8IKG4
A	72	HIS	-	expression tag	UNP Q8IKG4
A	73	HIS	-	expression tag	UNP Q8IKG4
A	74	HIS	-	expression tag	UNP Q8IKG4
B	67	MET	-	initiating methionine	UNP Q8IKG4
B	68	ALA	-	expression tag	UNP Q8IKG4
B	69	HIS	-	expression tag	UNP Q8IKG4
B	70	HIS	-	expression tag	UNP Q8IKG4
B	71	HIS	-	expression tag	UNP Q8IKG4
B	72	HIS	-	expression tag	UNP Q8IKG4
B	73	HIS	-	expression tag	UNP Q8IKG4
B	74	HIS	-	expression tag	UNP Q8IKG4

- Molecule 2 is [(2R)-2-{2-[hydroxy(methyl)amino]-2-oxoethyl}-6-phenylhexyl]phosphonic acid (three-letter code: R77) (formula: C₁₅H₂₄NO₅P).



Mol	Chain	Residues	Atoms					ZeroOcc	AltConf
2	A	1	Total	C	N	O	P	0	0
			22	15	1	5	1		
2	B	1	Total	C	N	O	P	0	0
			22	15	1	5	1		

- Molecule 3 is MANGANESE (II) ION (three-letter code: MN) (formula: Mn).

Mol	Chain	Residues	Atoms		ZeroOcc	AltConf
3	B	1	Total	Mn	0	0
			1	1		
3	A	1	Total	Mn	0	0
			1	1		

- Molecule 4 is CALCIUM ION (three-letter code: CA) (formula: Ca).

Mol	Chain	Residues	Atoms		ZeroOcc	AltConf
4	B	1	Total	Ca	0	0
			1	1		

- Molecule 5 is SULFATE ION (three-letter code: SO4) (formula: O₄S).



Mol	Chain	Residues	Atoms			ZeroOcc	AltConf
5	B	1	Total	O	S	0	0
			5	4	1		

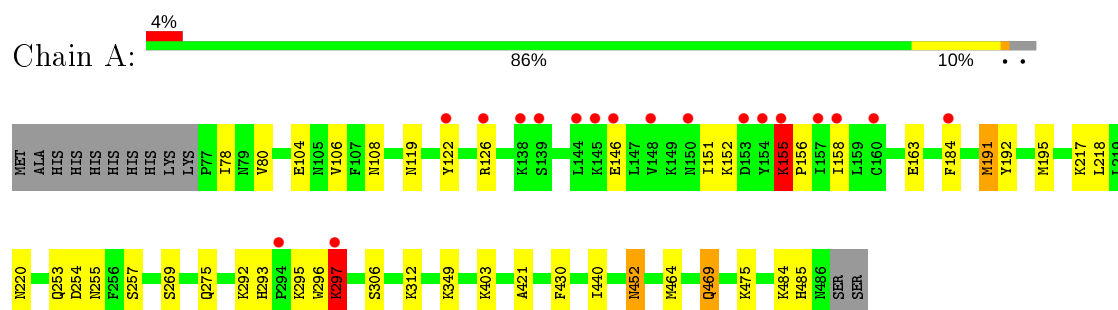
- Molecule 6 is water.

Mol	Chain	Residues	Atoms		ZeroOcc	AltConf
6	A	289	Total	O	0	0
			289	289		
6	B	284	Total	O	0	0
			284	284		

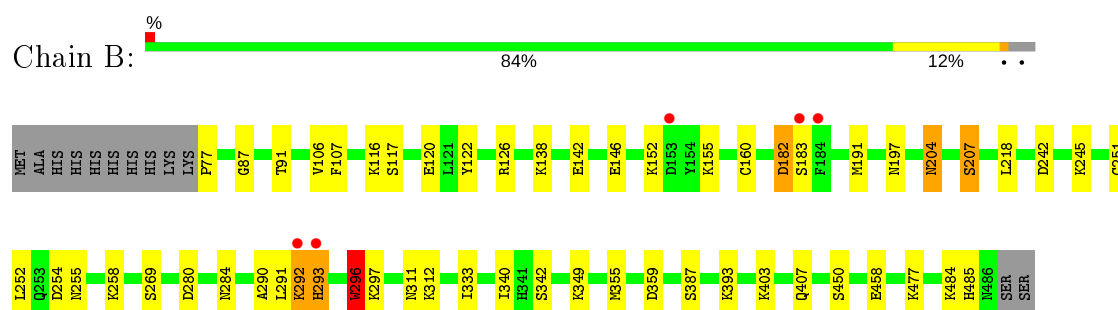
3 Residue-property plots [i](#)

These plots are drawn for all protein, RNA and DNA chains in the entry. The first graphic for a chain summarises the proportions of the various outlier classes displayed in the second graphic. The second graphic shows the sequence view annotated by issues in geometry and electron density. Residues are color-coded according to the number of geometric quality criteria for which they contain at least one outlier: green = 0, yellow = 1, orange = 2 and red = 3 or more. A red dot above a residue indicates a poor fit to the electron density ($RSRZ > 2$). Stretches of 2 or more consecutive residues without any outlier are shown as a green connector. Residues present in the sample, but not in the model, are shown in grey.

- Molecule 1: 1-deoxy-D-xylulose 5-phosphate reductoisomerase, apicoplast



- Molecule 1: 1-deoxy-D-xylulose 5-phosphate reductoisomerase, apicoplast



4 Data and refinement statistics

Property	Value	Source
Space group	P 1	Depositor
Cell constants a, b, c, α , β , γ	51.38Å 55.76Å 85.43Å 103.18° 102.83° 100.91°	Depositor
Resolution (Å)	48.47 – 1.90 47.73 – 1.90	Depositor EDS
% Data completeness (in resolution range)	95.2 (48.47-1.90) 95.2 (47.73-1.90)	Depositor EDS
R_{merge}	0.10	Depositor
R_{sym}	(Not available)	Depositor
$\langle I/\sigma(I) \rangle$ ¹	2.30 (at 1.90Å)	Xtriage
Refinement program	REFMAC 5.8.0073	Depositor
R, R_{free}	0.165 , 0.196 0.172 , 0.199	Depositor DCC
R_{free} test set	3312 reflections (5.07%)	wwPDB-VP
Wilson B-factor (Å ²)	20.3	Xtriage
Anisotropy	0.518	Xtriage
Bulk solvent k_{sol} (e/Å ³), B_{sol} (Å ²)	0.39 , 51.1	EDS
L-test for twinning ²	$\langle L \rangle = 0.48$, $\langle L^2 \rangle = 0.32$	Xtriage
Estimated twinning fraction	0.009 for -h,-k,h+k+l	Xtriage
F_o, F_c correlation	0.96	EDS
Total number of atoms	7235	wwPDB-VP
Average B, all atoms (Å ²)	22.0	wwPDB-VP

Xtriage's analysis on translational NCS is as follows: *The largest off-origin peak in the Patterson function is 6.18% of the height of the origin peak. No significant pseudotranslation is detected.*

¹Intensities estimated from amplitudes.

²Theoretical values of $\langle |L| \rangle$, $\langle L^2 \rangle$ for acentric reflections are 0.5, 0.333 respectively for untwinned datasets, and 0.375, 0.2 for perfectly twinned datasets.

5 Model quality [i](#)

5.1 Standard geometry [i](#)

Bond lengths and bond angles in the following residue types are not validated in this section: CA, MN, SO4, R77

The Z score for a bond length (or angle) is the number of standard deviations the observed value is removed from the expected value. A bond length (or angle) with $|Z| > 5$ is considered an outlier worth inspection. RMSZ is the root-mean-square of all Z scores of the bond lengths (or angles).

Mol	Chain	Bond lengths		Bond angles	
		RMSZ	$\# Z > 5$	RMSZ	$\# Z > 5$
1	A	0.43	0/3369	0.67	3/4550 (0.1%)
1	B	0.53	2/3382 (0.1%)	0.71	4/4569 (0.1%)
All	All	0.48	2/6751 (0.0%)	0.69	7/9119 (0.1%)

Chiral center outliers are detected by calculating the chiral volume of a chiral center and verifying if the center is modelled as a planar moiety or with the opposite hand. A planarity outlier is detected by checking planarity of atoms in a peptide group, atoms in a mainchain group or atoms of a sidechain that are expected to be planar.

Mol	Chain	#Chirality outliers	#Planarity outliers
1	B	0	2

All (2) bond length outliers are listed below:

Mol	Chain	Res	Type	Atoms	Z	Observed(Å)	Ideal(Å)
1	B	293	HIS	C-N	13.34	1.59	1.34
1	B	296	TRP	C-N	-6.76	1.18	1.34

All (7) bond angle outliers are listed below:

Mol	Chain	Res	Type	Atoms	Z	Observed(°)	Ideal(°)
1	B	296	TRP	C-N-CA	12.82	153.76	121.70
1	B	296	TRP	O-C-N	-10.74	105.51	122.70
1	B	155	LYS	CD-CE-NZ	-7.57	94.28	111.70
1	B	296	TRP	CA-C-N	7.44	133.57	117.20
1	A	297	LYS	CD-CE-NZ	-6.38	97.04	111.70
1	A	155	LYS	CD-CE-NZ	-6.11	97.65	111.70
1	A	292	LYS	CD-CE-NZ	-5.45	99.17	111.70

There are no chirality outliers.

All (2) planarity outliers are listed below:

Mol	Chain	Res	Type	Group
1	B	293	HIS	Mainchain
1	B	296	TRP	Peptide

5.2 Too-close contacts

In the following table, the Non-H and H(model) columns list the number of non-hydrogen atoms and hydrogen atoms in the chain respectively. The H(added) column lists the number of hydrogen atoms added and optimized by MolProbity. The Clashes column lists the number of clashes within the asymmetric unit, whereas Symm-Clashes lists symmetry related clashes.

Mol	Chain	Non-H	H(model)	H(added)	Clashes	Symm-Clashes
1	A	3294	0	3350	42	0
1	B	3316	0	3357	30	1
2	A	22	0	23	1	0
2	B	22	0	23	1	0
3	A	1	0	0	0	0
3	B	1	0	0	0	0
4	B	1	0	0	0	0
5	B	5	0	0	0	0
6	A	289	0	0	17	4
6	B	284	0	0	8	4
All	All	7235	0	6753	72	5

The all-atom clashscore is defined as the number of clashes found per 1000 atoms (including hydrogen atoms). The all-atom clashscore for this structure is 5.

All (72) close contacts within the same asymmetric unit are listed below, sorted by their clash magnitude.

Atom-1	Atom-2	Interatomic distance (Å)	Clash overlap (Å)
1:A:146:GLU:OE1	6:A:601:HOH:O	1.66	1.12
1:B:138:LYS:HG2	1:B:160:CYS:SG	2.02	1.00
1:A:184:PHE:CE2	6:A:843:HOH:O	2.15	0.98
1:A:403:LYS:HE3	6:A:861:HOH:O	1.70	0.92
1:B:138:LYS:HG2	1:B:160:CYS:HG	1.34	0.88
1:B:197:ASN:ND2	6:B:601:HOH:O	2.06	0.88
1:A:156:PRO:HG2	1:A:158:ILE:HD11	1.56	0.87
1:A:184:PHE:CD2	6:A:843:HOH:O	2.29	0.85
1:A:452:ASN:ND2	6:A:602:HOH:O	1.92	0.81
1:A:297:LYS:NZ	1:A:297:LYS:O	2.13	0.81

Continued on next page...

Continued from previous page...

Atom-1	Atom-2	Interatomic distance (Å)	Clash overlap (Å)
1:A:108:ASN:HB3	6:A:851:HOH:O	1.83	0.77
1:A:464:MET:HG3	6:A:773:HOH:O	1.84	0.76
1:B:242:ASP:OD2	6:B:759:HOH:O	2.02	0.76
1:A:469:GLN:NE2	6:A:789:HOH:O	2.22	0.72
1:A:464:MET:CG	6:A:773:HOH:O	2.38	0.72
1:B:146:GLU:OE1	6:B:602:HOH:O	2.07	0.71
1:A:293:HIS:HE1	1:A:306:SER:OG	1.73	0.71
1:A:155:LYS:CA	1:A:155:LYS:HE3	2.14	0.70
1:B:182:ASP:OD1	6:B:782:HOH:O	2.11	0.68
1:A:155:LYS:CE	1:A:155:LYS:HA	2.25	0.67
1:B:204:ASN:ND2	1:B:207:SER:OG	2.28	0.67
1:A:155:LYS:CE	1:A:155:LYS:CA	2.69	0.66
1:B:290:ALA:O	1:B:292:LYS:N	2.29	0.65
1:B:77:PRO:HB3	6:B:859:HOH:O	1.96	0.65
1:B:284:ASN:OD1	6:B:603:HOH:O	2.15	0.64
1:A:297:LYS:NZ	1:A:297:LYS:C	2.52	0.63
1:A:220:ASN:ND2	1:A:253[B]:GLN:HE22	1.98	0.62
1:B:290:ALA:C	1:B:292:LYS:H	2.02	0.62
1:A:293:HIS:HD2	1:A:295:LYS:H	1.48	0.60
1:A:191:MET:HG2	1:A:195:MET:HE2	1.84	0.59
1:B:87:GLY:O	1:B:91:THR:HG23	2.03	0.58
1:A:122:TYR:CZ	1:A:126:ARG:HD2	2.40	0.57
1:A:452:ASN:HB2	6:A:602:HOH:O	2.03	0.56
1:B:245:LYS:CE	6:B:613:HOH:O	2.54	0.56
1:B:269:SER:HB2	1:B:312:LYS:HE2	1.88	0.55
1:A:163:GLU:HB3	6:A:879:HOH:O	2.07	0.54
1:B:117:SER:HB3	1:B:120:GLU:OE2	2.08	0.54
1:A:191:MET:HG2	1:A:195:MET:CE	2.38	0.53
1:A:297:LYS:HZ1	1:A:297:LYS:C	2.11	0.53
1:B:106:VAL:HG23	1:B:107:PHE:CD2	2.44	0.52
1:A:464:MET:SD	6:A:773:HOH:O	2.59	0.52
1:A:254:ASP:O	1:A:255:ASN:HB2	2.09	0.52
1:B:340:ILE:HG12	1:B:355:MET:HG2	1.92	0.51
1:A:293:HIS:CE1	1:A:306:SER:OG	2.60	0.51
1:A:191:MET:HG3	1:A:218:LEU:HD21	1.93	0.50
1:B:254:ASP:O	1:B:255:ASN:HB2	2.12	0.50
1:A:253[A]:GLN:HG2	6:A:749:HOH:O	2.12	0.49
1:B:403:LYS:HE3	1:B:407:GLN:NE2	2.28	0.49
1:A:104:GLU:O	1:A:106:VAL:HG23	2.14	0.48
1:B:311:ASN:ND2	2:B:501:R77:H4	2.29	0.47
1:B:393:LYS:HE3	6:B:858:HOH:O	2.13	0.47

Continued on next page...

Continued from previous page...

Atom-1	Atom-2	Interatomic distance (Å)	Clash overlap (Å)
1:A:275:GLN:HB2	6:A:710:HOH:O	2.15	0.47
1:A:217:LYS:NZ	6:A:856:HOH:O	2.35	0.46
1:B:290:ALA:C	1:B:292:LYS:N	2.68	0.46
1:A:122:TYR:OH	1:A:126:ARG:HD2	2.17	0.45
1:B:122:TYR:CZ	1:B:126:ARG:HD2	2.51	0.45
1:A:485:HIS:HB2	6:A:848:HOH:O	2.17	0.44
1:B:204:ASN:HD22	1:B:204:ASN:C	2.22	0.43
1:B:349:LYS:HD3	1:B:349:LYS:HA	1.86	0.43
1:A:155:LYS:HB2	1:A:155:LYS:HE3	1.47	0.43
1:B:138:LYS:CG	1:B:160:CYS:SG	2.90	0.43
1:B:450:SER:OG	1:B:477:LYS:HE2	2.19	0.43
1:B:269:SER:HB2	1:B:312:LYS:HG3	2.00	0.42
1:B:191:MET:HG3	1:B:218:LEU:HD21	2.01	0.42
1:A:296:TRP:CG	2:A:501:R77:H24	2.55	0.42
1:A:192:TYR:OH	6:A:603:HOH:O	2.20	0.42
1:A:421:ALA:HB1	1:A:475:LYS:HG3	2.02	0.41
1:A:78:ILE:HG22	1:A:80[A]:VAL:HG13	2.02	0.41
1:A:126:ARG:HG2	1:A:151:ILE:HG12	2.03	0.41
1:A:269:SER:HB2	1:A:312:LYS:HE2	2.02	0.41
1:B:251:CYS:O	1:B:252:LEU:HB2	2.22	0.40
1:A:430:PHE:CG	1:A:440:ILE:HD11	2.57	0.40

All (5) symmetry-related close contacts are listed below. The label for Atom-2 includes the symmetry operator and encoded unit-cell translations to be applied.

Atom-1	Atom-2	Interatomic distance (Å)	Clash overlap (Å)
6:A:655:HOH:O	6:B:608:HOH:O[1_655]	1.87	0.33
6:A:651:HOH:O	6:B:666:HOH:O[1_556]	1.92	0.28
1:B:258:LYS:NZ	1:B:280:ASP:OD2[1_655]	2.09	0.11
6:A:649:HOH:O	6:B:662:HOH:O[1_545]	2.11	0.09
6:A:654:HOH:O	6:B:633:HOH:O[1_545]	2.17	0.03

5.3 Torsion angles ⓘ

5.3.1 Protein backbone ⓘ

In the following table, the Percentiles column shows the percent Ramachandran outliers of the chain as a percentile score with respect to all X-ray entries followed by that with respect to entries of similar resolution.

The Analysed column shows the number of residues for which the backbone conformation was analysed, and the total number of residues.

Mol	Chain	Analysed	Favoured	Allowed	Outliers	Percentiles	
1	A	412/422 (98%)	397 (96%)	15 (4%)	0	100	100
1	B	414/422 (98%)	400 (97%)	12 (3%)	2 (0%)	29	18
All	All	826/844 (98%)	797 (96%)	27 (3%)	2 (0%)	47	38

All (2) Ramachandran outliers are listed below:

Mol	Chain	Res	Type
1	B	291	LEU
1	B	342	SER

5.3.2 Protein sidechains ⓘ

In the following table, the Percentiles column shows the percent sidechain outliers of the chain as a percentile score with respect to all X-ray entries followed by that with respect to entries of similar resolution.

The Analysed column shows the number of residues for which the sidechain conformation was analysed, and the total number of residues.

Mol	Chain	Analysed	Rotameric	Outliers	Percentiles	
1	A	381/388 (98%)	371 (97%)	10 (3%)	46	39
1	B	383/388 (99%)	366 (96%)	17 (4%)	28	19
All	All	764/776 (98%)	737 (96%)	27 (4%)	37	27

All (27) residues with a non-rotameric sidechain are listed below:

Mol	Chain	Res	Type
1	A	119	ASN
1	A	152	LYS
1	A	155	LYS
1	A	191	MET
1	A	257	SER
1	A	297	LYS
1	A	349	LYS
1	A	452	ASN
1	A	469	GLN
1	A	484	LYS
1	B	116	LYS

Continued on next page...

Continued from previous page...

Mol	Chain	Res	Type
1	B	142	GLU
1	B	152	LYS
1	B	182	ASP
1	B	183	SER
1	B	204	ASN
1	B	207	SER
1	B	292	LYS
1	B	296	TRP
1	B	297	LYS
1	B	333	ILE
1	B	359[A]	ASP
1	B	359[B]	ASP
1	B	387	SER
1	B	458	GLU
1	B	484	LYS
1	B	485	HIS

Some sidechains can be flipped to improve hydrogen bonding and reduce clashes. All (19) such sidechains are listed below:

Mol	Chain	Res	Type
1	A	119	ASN
1	A	136	HIS
1	A	150	ASN
1	A	220	ASN
1	A	244	ASN
1	A	255	ASN
1	A	293	HIS
1	A	469	GLN
1	A	486	ASN
1	B	119	ASN
1	B	150	ASN
1	B	197	ASN
1	B	204	ASN
1	B	244	ASN
1	B	284	ASN
1	B	392	HIS
1	B	420	ASN
1	B	428	ASN
1	B	433	ASN

5.3.3 RNA ⓘ

There are no RNA molecules in this entry.

5.4 Non-standard residues in protein, DNA, RNA chains ⓘ

There are no non-standard protein/DNA/RNA residues in this entry.

5.5 Carbohydrates ⓘ

There are no carbohydrates in this entry.

5.6 Ligand geometry ⓘ

Of 6 ligands modelled in this entry, 3 are monoatomic - leaving 3 for Mogul analysis.

In the following table, the Counts columns list the number of bonds (or angles) for which Mogul statistics could be retrieved, the number of bonds (or angles) that are observed in the model and the number of bonds (or angles) that are defined in the Chemical Component Dictionary. The Link column lists molecule types, if any, to which the group is linked. The Z score for a bond length (or angle) is the number of standard deviations the observed value is removed from the expected value. A bond length (or angle) with $|Z| > 2$ is considered an outlier worth inspection. RMSZ is the root-mean-square of all Z scores of the bond lengths (or angles).

Mol	Type	Chain	Res	Link	Bond lengths			Bond angles		
					Counts	RMSZ	# $ Z > 2$	Counts	RMSZ	# $ Z > 2$
5	SO4	B	504	-	4,4,4	0.37	0	6,6,6	0.23	0
2	R77	B	501	3	20,22,22	0.98	1 (5%)	23,29,29	1.15	4 (17%)
2	R77	A	501	3	20,22,22	0.85	1 (5%)	23,29,29	0.88	1 (4%)

In the following table, the Chirals column lists the number of chiral outliers, the number of chiral centers analysed, the number of these observed in the model and the number defined in the Chemical Component Dictionary. Similar counts are reported in the Torsion and Rings columns. '-' means no outliers of that kind were identified.

Mol	Type	Chain	Res	Link	Chirals	Torsions	Rings
2	R77	B	501	3	-	8/20/20/20	0/1/1/1
2	R77	A	501	3	-	6/20/20/20	0/1/1/1

All (2) bond length outliers are listed below:

Mol	Chain	Res	Type	Atoms	Z	Observed(Å)	Ideal(Å)
2	B	501	R77	P4-C1	3.47	1.82	1.78
2	A	501	R77	P4-C1	2.52	1.81	1.78

All (5) bond angle outliers are listed below:

Mol	Chain	Res	Type	Atoms	Z	Observed(°)	Ideal(°)
2	B	501	R77	O5-P4-C1	-2.67	106.60	111.54
2	B	501	R77	O7-P4-O6	2.38	115.03	108.08
2	B	501	R77	O12-C8-C3	-2.23	118.18	122.20
2	B	501	R77	C3-C8-N9	2.12	120.22	117.63
2	A	501	R77	O5-P4-C1	-2.10	107.65	111.54

There are no chirality outliers.

All (14) torsion outliers are listed below:

Mol	Chain	Res	Type	Atoms
2	B	501	R77	C2-C3-C8-O12
2	A	501	R77	C2-C3-C8-O12
2	B	501	R77	C2-C1-P4-O5
2	B	501	R77	C2-C1-P4-O6
2	B	501	R77	C2-C1-P4-O7
2	A	501	R77	C2-C1-P4-O6
2	B	501	R77	C2-C3-C8-N9
2	A	501	R77	C2-C3-C8-N9
2	A	501	R77	C2-C1-P4-O7
2	B	501	R77	C2-C13-C14-C15
2	B	501	R77	C14-C15-C16-C17
2	A	501	R77	C2-C13-C14-C15
2	B	501	R77	O12-C8-N9-O10
2	A	501	R77	O12-C8-N9-O10

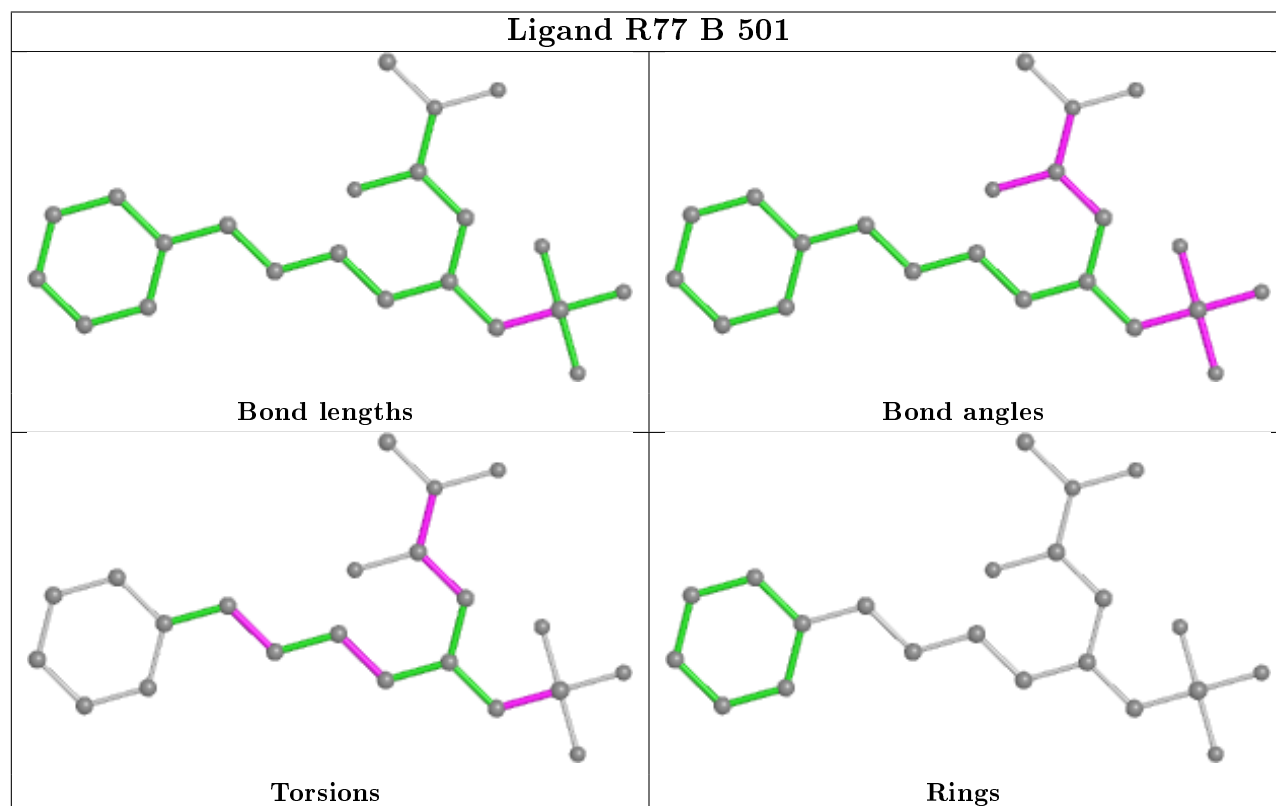
There are no ring outliers.

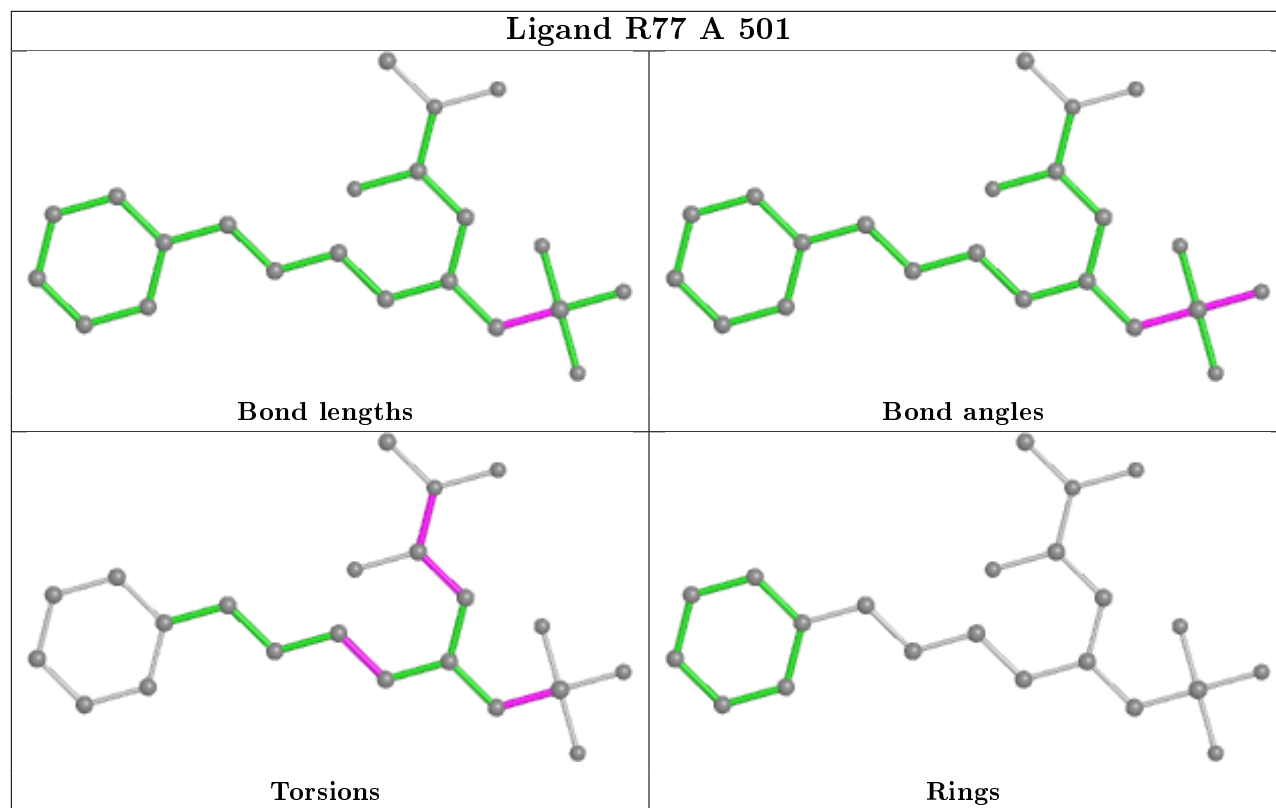
2 monomers are involved in 2 short contacts:

Mol	Chain	Res	Type	Clashes	Symm-Clashes
2	B	501	R77	1	0
2	A	501	R77	1	0

The following is a two-dimensional graphical depiction of Mogul quality analysis of bond lengths, bond angles, torsion angles, and ring geometry for all instances of the Ligand of Interest. In addition, ligands with molecular weight > 250 and outliers as shown on the validation Tables will also be included. For torsion angles, if less than 5% of the Mogul distribution of torsion angles is

within 10 degrees of the torsion angle in question, then that torsion angle is considered an outlier. Any bond that is central to one or more torsion angles identified as an outlier by Mogul will be highlighted in the graph. For rings, the root-mean-square deviation (RMSD) between the ring in question and similar rings identified by Mogul is calculated over all ring torsion angles. If the average RMSD is greater than 60 degrees and the minimal RMSD between the ring in question and any Mogul-identified rings is also greater than 60 degrees, then that ring is considered an outlier. The outliers are highlighted in purple. The color gray indicates Mogul did not find sufficient equivalents in the CSD to analyse the geometry.





5.7 Other polymers [i](#)

There are no such residues in this entry.

5.8 Polymer linkage issues [i](#)

The following chains have linkage breaks:

Mol	Chain	Number of breaks
1	B	1

All chain breaks are listed below:

Model	Chain	Residue-1	Atom-1	Residue-2	Atom-2	Distance (Å)
1	B	296:TRP	C	297:LYS	N	1.18

6 Fit of model and data ⓘ

6.1 Protein, DNA and RNA chains ⓘ

In the following table, the column labelled ‘#RSRZ> 2’ contains the number (and percentage) of RSRZ outliers, followed by percent RSRZ outliers for the chain as percentile scores relative to all X-ray entries and entries of similar resolution. The OWAB column contains the minimum, median, 95th percentile and maximum values of the occupancy-weighted average B-factor per residue. The column labelled ‘Q< 0.9’ lists the number of (and percentage) of residues with an average occupancy less than 0.9.

Mol	Chain	Analysed	<RSRZ>	#RSRZ>2	OWAB(Å ²)	Q<0.9
1	A	410/422 (97%)	-0.08	18 (4%) 34 37	10, 19, 42, 54	0
1	B	407/422 (96%)	-0.26	5 (1%) 79 81	9, 18, 36, 63	1 (0%)
All	All	817/844 (96%)	-0.17	23 (2%) 53 56	9, 18, 41, 63	1 (0%)

All (23) RSRZ outliers are listed below:

Mol	Chain	Res	Type	RSRZ
1	B	184	PHE	9.0
1	A	184	PHE	5.6
1	A	138	LYS	4.0
1	B	153	ASP	3.8
1	B	292	LYS	3.7
1	A	153	ASP	3.4
1	B	293	HIS	3.2
1	A	144	LEU	3.1
1	A	155	LYS	3.0
1	A	158	ILE	3.0
1	A	154	TYR	2.8
1	A	148	VAL	2.7
1	A	150	ASN	2.5
1	A	122	TYR	2.4
1	B	183	SER	2.3
1	A	157	ILE	2.3
1	A	126	ARG	2.3
1	A	160	CYS	2.2
1	A	294	PRO	2.2
1	A	297	LYS	2.1
1	A	139	SER	2.1
1	A	146	GLU	2.1
1	A	145	LYS	2.1

6.2 Non-standard residues in protein, DNA, RNA chains [i](#)

There are no non-standard protein/DNA/RNA residues in this entry.

6.3 Carbohydrates [i](#)

There are no carbohydrates in this entry.

6.4 Ligands [i](#)

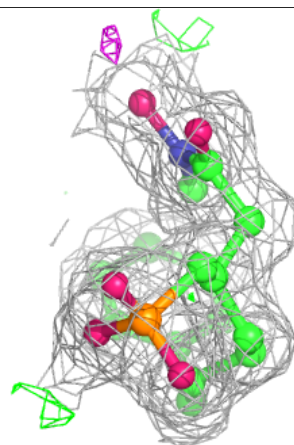
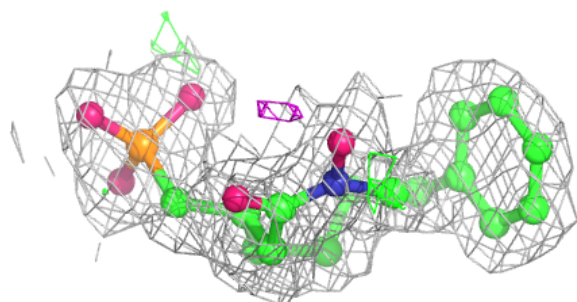
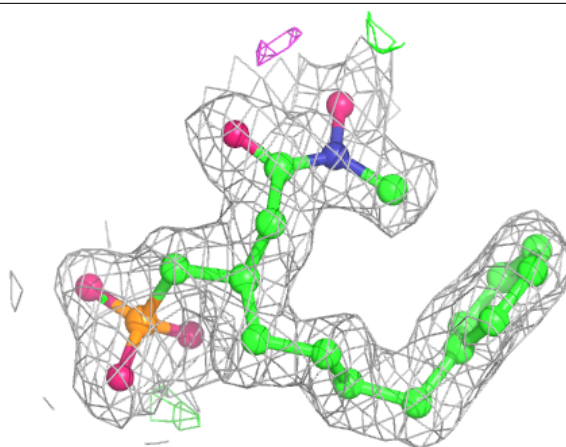
In the following table, the Atoms column lists the number of modelled atoms in the group and the number defined in the chemical component dictionary. The B-factors column lists the minimum, median, 95th percentile and maximum values of B factors of atoms in the group. The column labelled 'Q< 0.9' lists the number of atoms with occupancy less than 0.9.

Mol	Type	Chain	Res	Atoms	RSCC	RSR	B-factors(\AA^2)	Q<0.9
5	SO4	B	504	5/5	0.85	0.35	58,59,62,63	0
2	R77	B	501	22/22	0.97	0.09	14,18,21,22	0
2	R77	A	501	22/22	0.98	0.08	15,20,23,23	0
3	MN	A	502	1/1	1.00	0.06	14,14,14,14	0
3	MN	B	502	1/1	1.00	0.04	13,13,13,13	0
4	CA	B	503	1/1	1.00	0.04	15,15,15,15	0

The following is a graphical depiction of the model fit to experimental electron density of all instances of the Ligand of Interest. In addition, ligands with molecular weight > 250 and outliers as shown on the geometry validation Tables will also be included. Each fit is shown from different orientation to approximate a three-dimensional view.

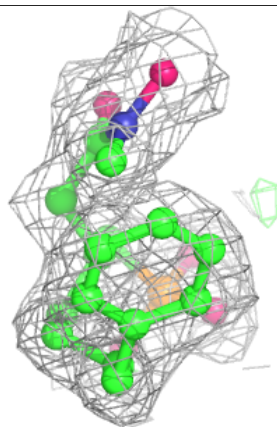
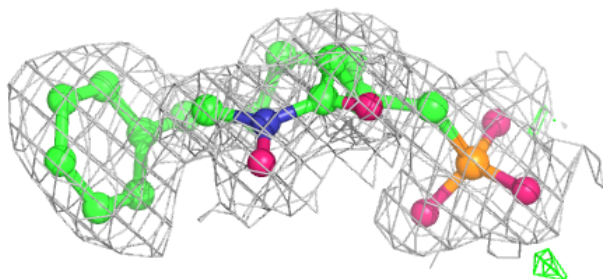
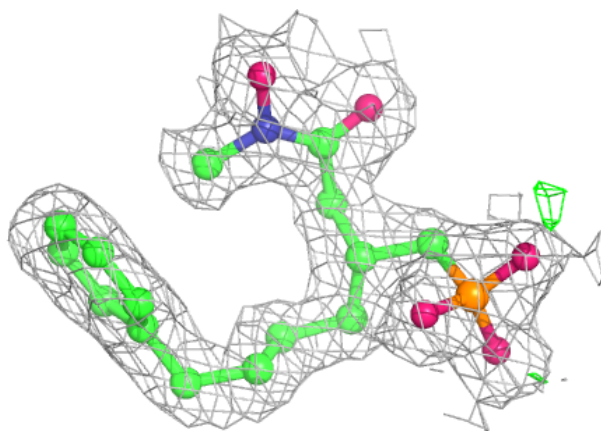
Electron density around R77 B 501:

$2mF_o-DF_c$ (at 0.7 rmsd) in gray
 mF_o-DF_c (at 3 rmsd) in purple (negative)
and green (positive)



Electron density around R77 A 501:

$2mF_o-DF_c$ (at 0.7 rmsd) in gray
 mF_o-DF_c (at 3 rmsd) in purple (negative)
and green (positive)



6.5 Other polymers [i](#)

There are no such residues in this entry.