



Full wwPDB X-ray Structure Validation Report ⓘ

Jun 15, 2020 – 09:02 am BST

PDB ID : 4YAF
Title : rat CYPOR with 2'-AMP
Authors : Xia, C.; Kim, J.J.P.
Deposited on : 2015-02-17
Resolution : 1.91 Å(reported)

This is a Full wwPDB X-ray Structure Validation Report for a publicly released PDB entry.

We welcome your comments at validation@mail.wwpdb.org

A user guide is available at

<https://www.wwpdb.org/validation/2017/XrayValidationReportHelp>

with specific help available everywhere you see the ⓘ symbol.

The following versions of software and data (see [references ⓘ](#)) were used in the production of this report:

MolProbity : 4.02b-467
Mogul : 1.8.5 (274361), CSD as541be (2020)
Xtriage (Phenix) : 1.13
EDS : 2.11
buster-report : 1.1.7 (2018)
Percentile statistics : 20191225.v01 (using entries in the PDB archive December 25th 2019)
Refmac : 5.8.0158
CCP4 : 7.0.044 (Gargrove)
Ideal geometry (proteins) : Engh & Huber (2001)
Ideal geometry (DNA, RNA) : Parkinson et al. (1996)
Validation Pipeline (wwPDB-VP) : 2.11

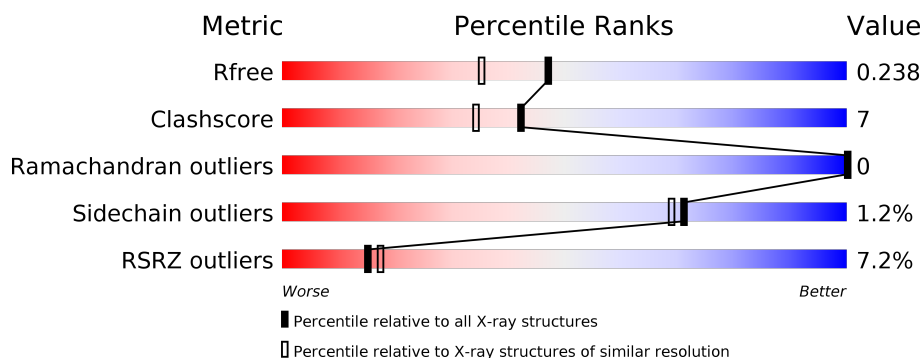
1 Overall quality at a glance

The following experimental techniques were used to determine the structure:

X-RAY DIFFRACTION

The reported resolution of this entry is 1.91 Å.

Percentile scores (ranging between 0-100) for global validation metrics of the entry are shown in the following graphic. The table shows the number of entries on which the scores are based.



Metric	Whole archive (#Entries)	Similar resolution (#Entries, resolution range(Å))
R_{free}	130704	7937 (1.94-1.90)
Clashscore	141614	8644 (1.94-1.90)
Ramachandran outliers	138981	8530 (1.94-1.90)
Sidechain outliers	138945	8530 (1.94-1.90)
RSRZ outliers	127900	7793 (1.94-1.90)

The table below summarises the geometric issues observed across the polymeric chains and their fit to the electron density. The red, orange, yellow and green segments on the lower bar indicate the fraction of residues that contain outliers for ≥ 3 , 2, 1 and 0 types of geometric quality criteria respectively. A grey segment represents the fraction of residues that are not modelled. The numeric value for each fraction is indicated below the corresponding segment, with a dot representing fractions $\leq 5\%$. The upper red bar (where present) indicates the fraction of residues that have poor fit to the electron density. The numeric value is given above the bar.

Mol	Chain	Length	Quality of chain
1	A	622	
1	B	622	

The following table lists non-polymeric compounds, carbohydrate monomers and non-standard residues in protein, DNA, RNA chains that are outliers for geometric or electron-density-fit criteria:

Mol	Type	Chain	Res	Chirality	Geometry	Clashes	Electron density
5	PO4	B	704	-	X	-	-

2 Entry composition [i](#)

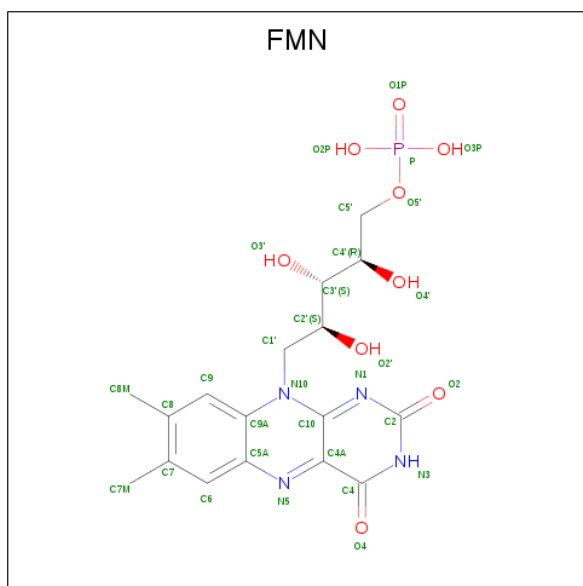
There are 6 unique types of molecules in this entry. The entry contains 10977 atoms, of which 0 are hydrogens and 0 are deuteriums.

In the tables below, the ZeroOcc column contains the number of atoms modelled with zero occupancy, the AltConf column contains the number of residues with at least one atom in alternate conformation and the Trace column contains the number of residues modelled with at most 2 atoms.

- Molecule 1 is a protein called NADPH–cytochrome P450 reductase.

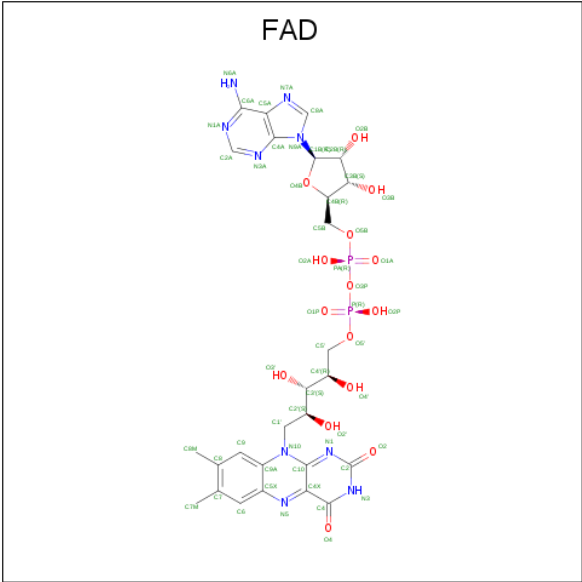
Mol	Chain	Residues	Atoms					ZeroOcc	AltConf	Trace
1	A	609	Total	C	N	O	S	0	0	0
			4867	3087	835	922	23			
1	B	605	Total	C	N	O	S	0	0	0
			4804	3045	830	906	23			

- Molecule 2 is FLAVIN MONONUCLEOTIDE (three-letter code: FMN) (formula: $C_{17}H_{21}N_4O_9P$).



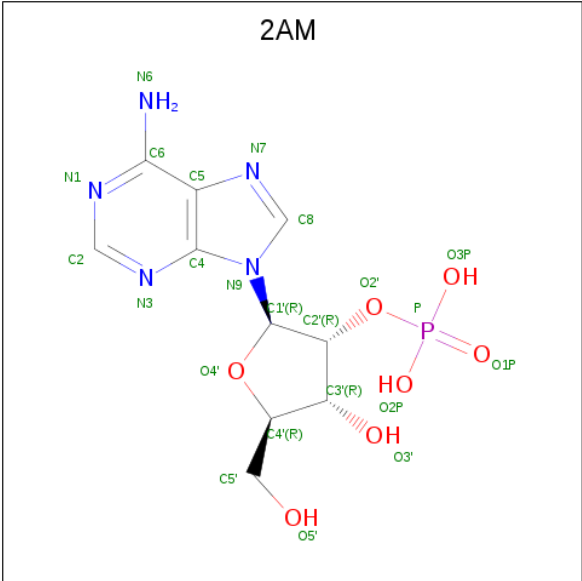
Mol	Chain	Residues	Atoms					ZeroOcc	AltConf
2	A	1	Total	C	N	O	P	0	0
			31	17	4	9	1		
2	B	1	Total	C	N	O	P	0	0
			31	17	4	9	1		

- Molecule 3 is FLAVIN-ADENINE DINUCLEOTIDE (three-letter code: FAD) (formula: $C_{27}H_{33}N_9O_{15}P_2$).



Mol	Chain	Residues	Atoms					ZeroOcc	AltConf
3	A	1	Total	C	N	O	P	0	0
			53	27	9	15	2		
3	B	1	Total	C	N	O	P	0	0
			53	27	9	15	2		

- Molecule 4 is ADENOSINE-2'-MONOPHOSPHATE (three-letter code: 2AM) (formula: C₁₀H₁₄N₅O₇P).



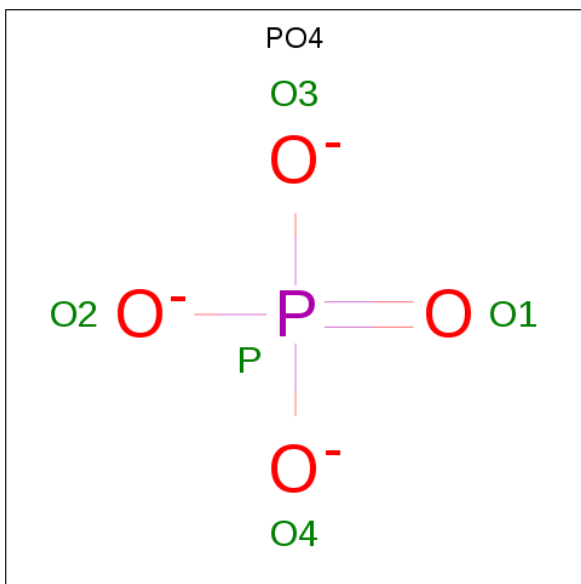
Mol	Chain	Residues	Atoms					ZeroOcc	AltConf
4	A	1	Total	C	N	O	P	0	0
			23	10	5	7	1		

Continued on next page...

Continued from previous page...

Mol	Chain	Residues	Atoms					ZeroOcc	AltConf
4	B	1	Total	C	N	O	P	0	0
			23	10	5	7	1		

- Molecule 5 is PHOSPHATE ION (three-letter code: PO4) (formula: O₄P).



Mol	Chain	Residues	Atoms			ZeroOcc	AltConf
5	B	1	Total	O	P	0	0
			5	4	1		

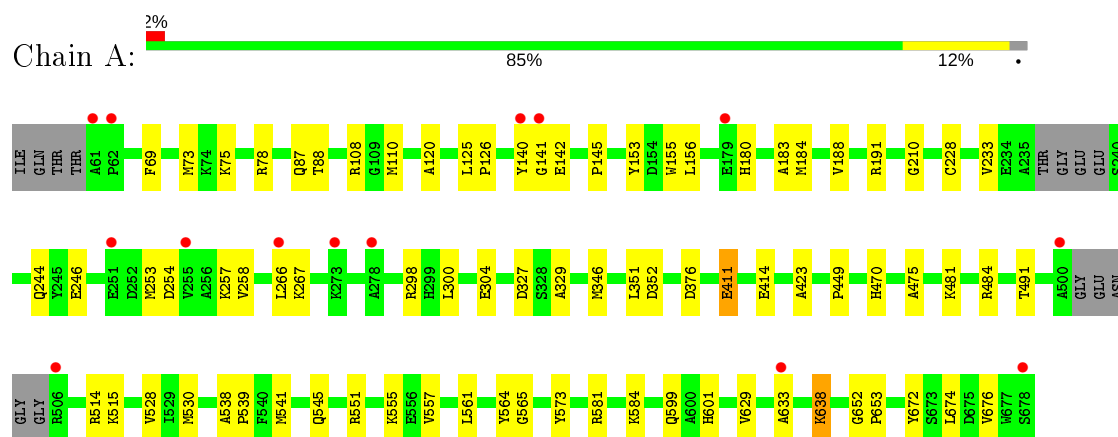
- Molecule 6 is water.

Mol	Chain	Residues	Atoms		ZeroOcc	AltConf
6	A	596	Total	O	0	0
			596	596		
6	B	491	Total	O	0	0
			491	491		

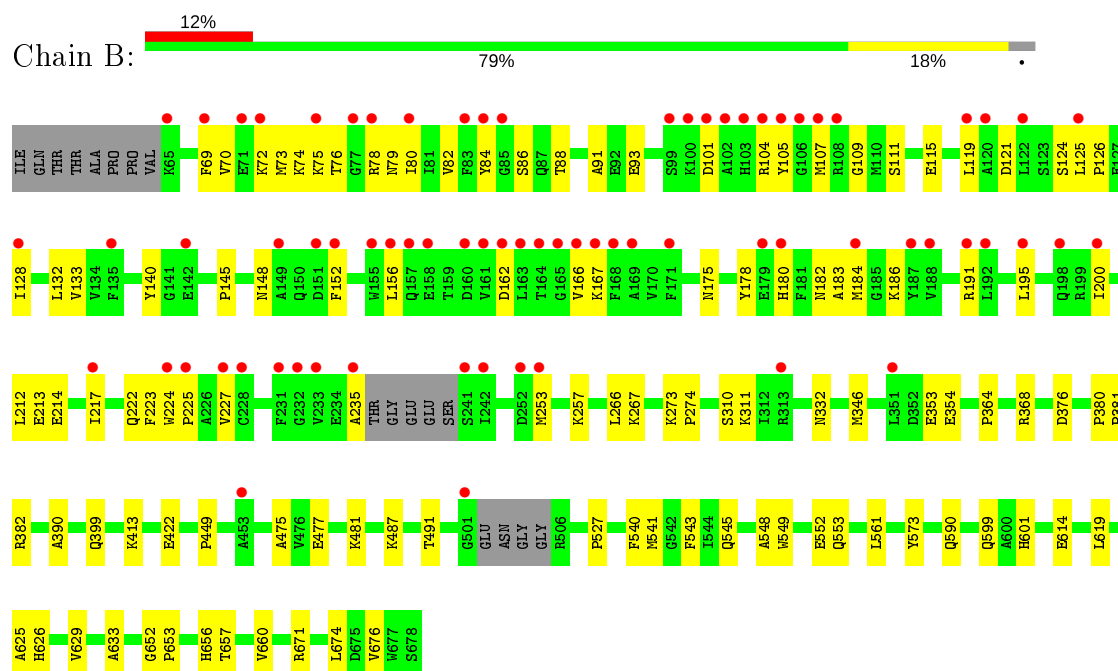
3 Residue-property plots [i](#)

These plots are drawn for all protein, RNA and DNA chains in the entry. The first graphic for a chain summarises the proportions of the various outlier classes displayed in the second graphic. The second graphic shows the sequence view annotated by issues in geometry and electron density. Residues are color-coded according to the number of geometric quality criteria for which they contain at least one outlier: green = 0, yellow = 1, orange = 2 and red = 3 or more. A red dot above a residue indicates a poor fit to the electron density ($RSRZ > 2$). Stretches of 2 or more consecutive residues without any outlier are shown as a green connector. Residues present in the sample, but not in the model, are shown in grey.

- Molecule 1: NADPH-cytochrome P450 reductase



- Molecule 1: NADPH-cytochrome P450 reductase



4 Data and refinement statistics

Property	Value	Source
Space group	P 21 21 21	Depositor
Cell constants a, b, c, α , β , γ	102.04Å 115.29Å 118.91Å 90.00° 90.00° 90.00°	Depositor
Resolution (Å)	46.24 – 1.91 46.24 – 1.91	Depositor EDS
% Data completeness (in resolution range)	99.2 (46.24-1.91) 99.3 (46.24-1.91)	Depositor EDS
R_{merge}	(Not available)	Depositor
R_{sym}	(Not available)	Depositor
$\langle I/\sigma(I) \rangle$ ¹	5.10 (at 1.91Å)	Xtriage
Refinement program	CNS 1.3	Depositor
R, R_{free}	0.205 , 0.239 0.205 , 0.238	Depositor DCC
R_{free} test set	5432 reflections (5.04%)	wwPDB-VP
Wilson B-factor (Å ²)	30.3	Xtriage
Anisotropy	0.247	Xtriage
Bulk solvent k_{sol} (e/Å ³), B_{sol} (Å ²)	0.34 , 48.3	EDS
L-test for twinning ²	$\langle L \rangle = 0.50$, $\langle L^2 \rangle = 0.34$	Xtriage
Estimated twinning fraction	0.008 for -h,l,k	Xtriage
F_o, F_c correlation	0.95	EDS
Total number of atoms	10977	wwPDB-VP
Average B, all atoms (Å ²)	38.0	wwPDB-VP

Xtriage's analysis on translational NCS is as follows: *The largest off-origin peak in the Patterson function is 14.25% of the height of the origin peak. No significant pseudotranslation is detected.*

¹Intensities estimated from amplitudes.

²Theoretical values of $\langle |L| \rangle$, $\langle L^2 \rangle$ for acentric reflections are 0.5, 0.333 respectively for untwinned datasets, and 0.375, 0.2 for perfectly twinned datasets.

5 Model quality

5.1 Standard geometry

Bond lengths and bond angles in the following residue types are not validated in this section: FMN, PO4, 2AM, FAD

The Z score for a bond length (or angle) is the number of standard deviations the observed value is removed from the expected value. A bond length (or angle) with $|Z| > 5$ is considered an outlier worth inspection. RMSZ is the root-mean-square of all Z scores of the bond lengths (or angles).

Mol	Chain	Bond lengths		Bond angles	
		RMSZ	# Z >5	RMSZ	# Z >5
1	A	0.35	0/4984	0.59	2/6747 (0.0%)
1	B	0.31	0/4919	0.58	3/6657 (0.0%)
All	All	0.33	0/9903	0.58	5/13404 (0.0%)

There are no bond length outliers.

All (5) bond angle outliers are listed below:

Mol	Chain	Res	Type	Atoms	Z	Observed(°)	Ideal(°)
1	A	140	TYR	CB-CA-C	6.88	124.16	110.40
1	B	140	TYR	CB-CA-C	5.91	122.22	110.40
1	A	210	GLY	N-CA-C	-5.30	99.84	113.10
1	B	128	ILE	N-CA-C	5.28	125.27	111.00
1	B	128	ILE	CB-CA-C	-5.14	101.31	111.60

There are no chirality outliers.

There are no planarity outliers.

5.2 Too-close contacts

In the following table, the Non-H and H(model) columns list the number of non-hydrogen atoms and hydrogen atoms in the chain respectively. The H(added) column lists the number of hydrogen atoms added and optimized by MolProbity. The Clashes column lists the number of clashes within the asymmetric unit, whereas Symm-Clashes lists symmetry related clashes.

Mol	Chain	Non-H	H(model)	H(added)	Clashes	Symm-Clashes
1	A	4867	0	4709	57	0
1	B	4804	0	4610	76	0
2	A	31	0	19	1	0
2	B	31	0	19	0	0

Continued on next page...

Continued from previous page...

Mol	Chain	Non-H	H(model)	H(added)	Clashes	Symm-Clashes
3	A	53	0	31	0	0
3	B	53	0	31	0	0
4	A	23	0	12	0	0
4	B	23	0	12	0	0
5	B	5	0	0	0	0
6	A	596	0	0	8	0
6	B	491	0	0	9	0
All	All	10977	0	9443	133	0

The all-atom clashscore is defined as the number of clashes found per 1000 atoms (including hydrogen atoms). The all-atom clashscore for this structure is 7.

All (133) close contacts within the same asymmetric unit are listed below, sorted by their clash magnitude.

Atom-1	Atom-2	Interatomic distance (Å)	Clash overlap (Å)
1:A:581:ARG:HH21	1:A:584:LYS:HD3	1.37	0.89
1:B:72:LYS:HD2	1:B:354:GLU:HB3	1.58	0.85
1:B:119:LEU:HG	1:B:152:PHE:CD1	2.22	0.75
1:A:254:ASP:HB2	1:A:257:LYS:HE2	1.71	0.71
1:A:581:ARG:NH2	1:A:584:LYS:HD3	2.06	0.71
1:B:477:GLU:HG3	1:B:487:LYS:HD2	1.72	0.70
1:A:184:MET:HE2	1:A:184:MET:O	1.91	0.70
1:A:376:ASP:HB3	1:A:449:PRO:HG2	1.75	0.67
1:B:115:GLU:OE1	1:B:148:ASN:HA	1.95	0.67
1:B:86:SER:HB2	1:B:91:ALA:HB3	1.77	0.65
1:A:633:ALA:HB2	1:A:676:VAL:HB	1.78	0.65
1:A:253:MET:HE2	1:A:257:LYS:HE3	1.79	0.65
1:A:629:VAL:HB	1:A:674:LEU:HD23	1.78	0.65
1:A:257:LYS:HA	1:A:266:LEU:HD21	1.79	0.64
1:B:156:LEU:HB3	1:B:191:ARG:HG2	1.79	0.63
1:B:376:ASP:HB3	1:B:449:PRO:HG2	1.79	0.63
1:B:70:VAL:HG12	1:B:74:LYS:HE3	1.81	0.62
1:B:69:PHE:CE1	1:B:121:ASP:HB2	2.35	0.61
1:B:76:THR:HG21	1:B:78:ARG:HE	1.65	0.61
1:B:561:LEU:HD22	1:B:590:GLN:HB2	1.82	0.60
1:A:638:LYS:HE3	1:A:638:LYS:HA	1.82	0.60
1:A:88:THR:HB	2:A:701:FMN:O1P	2.02	0.59
1:B:222:GLN:C	1:B:225:PRO:HD2	2.23	0.58
1:B:548:ALA:O	1:B:552:GLU:HG2	2.05	0.56
1:A:551:ARG:HG3	1:A:557:VAL:HG21	1.87	0.56
1:B:191:ARG:NE	1:B:195:LEU:HD11	2.19	0.56

Continued on next page...

Continued from previous page...

Atom-1	Atom-2	Interatomic distance (Å)	Clash overlap (Å)
1:A:78:ARG:HH11	1:A:78:ARG:HG3	1.69	0.56
1:A:228:CYS:HA	1:A:233:VAL:CG2	2.36	0.55
1:B:125:LEU:N	1:B:126:PRO:HD2	2.21	0.55
1:A:75:LYS:HD2	6:A:1357:HOH:O	2.06	0.55
1:B:422:GLU:HG3	1:B:481:LYS:CE	2.37	0.55
1:B:223:PHE:O	1:B:227:VAL:HG23	2.07	0.55
1:A:555:LYS:HE2	6:A:1340:HOH:O	2.06	0.55
1:B:167:LYS:HG3	1:B:200:ILE:HD11	1.89	0.54
1:B:390:ALA:O	1:B:399:GLN:HG3	2.07	0.54
1:A:78:ARG:HH11	1:A:78:ARG:CG	2.21	0.53
1:B:76:THR:CG2	1:B:78:ARG:HE	2.21	0.52
1:B:167:LYS:CG	1:B:200:ILE:HD11	2.38	0.52
1:A:228:CYS:HA	1:A:233:VAL:HG22	1.90	0.52
1:B:191:ARG:O	1:B:195:LEU:HD13	2.09	0.52
1:B:481:LYS:HE3	6:B:1133:HOH:O	2.08	0.52
1:A:423:ALA:HA	1:A:481:LYS:HB2	1.91	0.52
1:A:244:GLN:HG2	6:A:1099:HOH:O	2.10	0.51
1:B:162:ASP:HA	1:B:195:LEU:O	2.10	0.51
1:A:156:LEU:HB3	1:A:191:ARG:HG2	1.93	0.51
1:A:145:PRO:HG3	1:A:184:MET:SD	2.51	0.51
1:B:93:GLU:OE1	1:B:93:GLU:HA	2.11	0.50
1:B:549:TRP:O	1:B:553:GLN:HG2	2.10	0.50
1:A:298:ARG:HD3	6:A:1109:HOH:O	2.10	0.50
1:B:126:PRO:HD3	1:B:166:VAL:HG22	1.92	0.50
1:A:145:PRO:HG2	1:A:153:TYR:CG	2.46	0.50
1:B:167:LYS:HD2	1:B:167:LYS:N	2.27	0.50
1:B:222:GLN:O	1:B:225:PRO:HD2	2.11	0.50
1:B:310:SER:O	1:B:311:LYS:HB2	2.12	0.49
1:A:514:ARG:HH11	1:A:514:ARG:HG2	1.75	0.49
1:A:541:MET:O	1:A:545:GLN:HG3	2.12	0.49
1:B:657:THR:HG23	6:B:1147:HOH:O	2.11	0.49
1:A:69:PHE:O	1:A:73:MET:HG3	2.13	0.49
1:B:652:GLY:N	1:B:653:PRO:HA	2.28	0.48
1:B:541:MET:O	1:B:545:GLN:HG3	2.14	0.48
1:B:656:HIS:O	1:B:660:VAL:HG23	2.14	0.48
1:A:246:GLU:HB3	1:A:351:LEU:HD21	1.96	0.48
1:B:633:ALA:HB2	1:B:676:VAL:HB	1.95	0.48
1:B:119:LEU:HD22	1:B:119:LEU:N	2.28	0.48
1:B:266:LEU:HG	1:B:267:LYS:HG2	1.96	0.48
1:B:182:ASN:O	1:B:186:LYS:HG2	2.13	0.47
1:B:70:VAL:HG21	1:B:124:SER:HB2	1.97	0.47

Continued on next page...

Continued from previous page...

Atom-1	Atom-2	Interatomic distance (Å)	Clash overlap (Å)
1:B:145:PRO:HB3	1:B:184:MET:SD	2.55	0.47
1:B:253:MET:SD	1:B:364:PRO:HG3	2.54	0.47
1:B:332:ASN:OD1	1:B:368:ARG:NH1	2.47	0.47
1:B:88:THR:HG22	6:B:899:HOH:O	2.14	0.47
1:A:561:LEU:HD12	1:A:561:LEU:N	2.30	0.46
1:B:133:VAL:HG13	1:B:133:VAL:O	2.16	0.46
1:A:88:THR:O	1:A:88:THR:HG22	2.16	0.46
1:B:614:GLU:HG2	6:B:1218:HOH:O	2.16	0.46
1:B:180:HIS:HB3	1:B:183:ALA:HB2	1.96	0.46
1:B:629:VAL:HB	1:B:674:LEU:HD23	1.97	0.46
1:B:132:LEU:HD12	1:B:167:LYS:O	2.15	0.46
1:B:76:THR:HB	1:B:78:ARG:HG2	1.98	0.46
1:A:254:ASP:HB2	1:A:257:LYS:CE	2.43	0.46
1:A:411:GLU:HA	1:A:414:GLU:OE1	2.16	0.46
1:B:82:VAL:O	1:B:111:SER:HA	2.15	0.46
1:A:515:LYS:HE3	6:A:1336:HOH:O	2.16	0.46
1:B:101:ASP:HB2	1:B:224:TRP:CZ2	2.51	0.45
1:A:184:MET:CE	1:A:188:VAL:HG23	2.47	0.45
1:A:184:MET:HE2	1:A:188:VAL:HG23	1.98	0.45
1:B:599:GLN:HG3	1:B:601:HIS:CE1	2.51	0.45
1:B:148:ASN:HB3	6:B:1236:HOH:O	2.16	0.45
1:B:382:ARG:CZ	6:B:932:HOH:O	2.64	0.45
1:B:75:LYS:HD2	6:B:1252:HOH:O	2.17	0.45
1:B:175:ASN:HB3	1:B:178:TYR:CD1	2.52	0.45
1:A:120:ALA:HA	1:A:155:TRP:CZ2	2.52	0.45
1:A:528:VAL:HG12	1:A:530:MET:HG3	1.99	0.44
1:B:104:ARG:O	1:B:235:ALA:HA	2.17	0.44
1:A:78:ARG:HD3	1:A:110:MET:HB3	1.99	0.44
1:B:93:GLU:HG3	6:B:938:HOH:O	2.17	0.44
1:A:78:ARG:NH2	1:A:352:ASP:OD2	2.51	0.44
1:B:475:ALA:HA	1:B:491:THR:HB	1.99	0.44
1:B:186:LYS:HE2	1:B:186:LYS:HB3	1.85	0.44
1:B:80:ILE:O	1:B:109:GLY:HA2	2.18	0.44
1:B:167:LYS:HD3	6:B:968:HOH:O	2.16	0.44
1:A:253:MET:CE	1:A:257:LYS:HE3	2.46	0.44
1:A:304:GLU:HG2	1:A:470:HIS:CD2	2.53	0.44
1:B:105:TYR:O	1:B:107:MET:HG3	2.18	0.44
1:B:167:LYS:HB3	1:B:200:ILE:CG1	2.48	0.44
1:A:652:GLY:N	1:A:653:PRO:HA	2.32	0.43
1:B:540:PHE:HA	1:B:543:PHE:HB2	1.99	0.43
1:B:84:TYR:CD1	1:B:84:TYR:O	2.72	0.43

Continued on next page...

Continued from previous page...

Atom-1	Atom-2	Interatomic distance (Å)	Clash overlap (Å)
1:A:538:ALA:HB3	1:A:539:PRO:CD	2.49	0.43
1:B:214:GLU:OE1	1:B:413:LYS:HE3	2.19	0.43
1:B:380:PRO:HA	1:B:381:PRO:HD3	1.92	0.43
1:A:180:HIS:HB3	1:A:183:ALA:HB2	2.01	0.43
1:A:599:GLN:HG2	1:A:601:HIS:O	2.19	0.42
1:A:125:LEU:N	1:A:126:PRO:CD	2.81	0.42
1:B:257:LYS:HA	1:B:266:LEU:HD21	2.01	0.42
1:A:141:GLY:O	1:A:142:GLU:HB2	2.19	0.42
1:A:267:LYS:HA	6:A:1245:HOH:O	2.18	0.42
1:A:551:ARG:HG3	1:A:557:VAL:CG2	2.49	0.42
1:B:273:LYS:HA	1:B:274:PRO:HD3	1.89	0.41
1:B:626:HIS:CD2	1:B:671:ARG:HG2	2.55	0.41
1:A:638:LYS:CE	1:A:638:LYS:HA	2.50	0.41
1:B:79:ASN:ND2	1:B:80:ILE:HG13	2.35	0.41
1:B:213:GLU:O	1:B:217:ILE:HG13	2.20	0.41
1:B:73:MET:HB3	1:B:78:ARG:HB2	2.03	0.41
1:A:108:ARG:HH11	1:A:108:ARG:HG3	1.85	0.41
1:A:253:MET:HG2	1:A:258:VAL:CG2	2.51	0.41
1:A:564:TYR:CG	1:A:565:GLY:N	2.88	0.41
1:A:475:ALA:HA	1:A:491:THR:HB	2.03	0.40
1:A:514:ARG:NH1	6:A:818:HOH:O	2.54	0.40
1:B:266:LEU:O	1:B:267:LYS:HB2	2.21	0.40
1:A:327:ASP:OD1	1:A:329:ALA:HB3	2.21	0.40
1:A:87:GLN:HG2	6:A:810:HOH:O	2.21	0.40
1:B:527:PRO:HB2	1:B:625:ALA:HB2	2.03	0.40

There are no symmetry-related clashes.

5.3 Torsion angles ⓘ

5.3.1 Protein backbone ⓘ

In the following table, the Percentiles column shows the percent Ramachandran outliers of the chain as a percentile score with respect to all X-ray entries followed by that with respect to entries of similar resolution.

The Analysed column shows the number of residues for which the backbone conformation was analysed, and the total number of residues.

Mol	Chain	Analysed	Favoured	Allowed	Outliers	Percentiles	
1	A	603/622 (97%)	590 (98%)	13 (2%)	0	100	100

Continued on next page...

Continued from previous page...

Mol	Chain	Analysed	Favoured	Allowed	Outliers	Percentiles	
1	B	599/622 (96%)	570 (95%)	29 (5%)	0	100	100
All	All	1202/1244 (97%)	1160 (96%)	42 (4%)	0	100	100

There are no Ramachandran outliers to report.

5.3.2 Protein sidechains ⓘ

In the following table, the Percentiles column shows the percent sidechain outliers of the chain as a percentile score with respect to all X-ray entries followed by that with respect to entries of similar resolution.

The Analysed column shows the number of residues for which the sidechain conformation was analysed, and the total number of residues.

Mol	Chain	Analysed	Rotameric	Outliers	Percentiles	
1	A	518/531 (98%)	511 (99%)	7 (1%)	67	63
1	B	502/531 (94%)	497 (99%)	5 (1%)	76	75
All	All	1020/1062 (96%)	1008 (99%)	12 (1%)	71	69

All (12) residues with a non-rotameric sidechain are listed below:

Mol	Chain	Res	Type
1	A	300	LEU
1	A	346	MET
1	A	411	GLU
1	A	484	ARG
1	A	573	TYR
1	A	638	LYS
1	A	672	TYR
1	B	212	LEU
1	B	346	MET
1	B	353	GLU
1	B	573	TYR
1	B	619	LEU

Some sidechains can be flipped to improve hydrogen bonding and reduce clashes. All (3) such sidechains are listed below:

Mol	Chain	Res	Type
1	A	399	GLN

Continued on next page...

Continued from previous page...

Mol	Chain	Res	Type
1	A	486	ASN
1	B	356	ASN

5.3.3 RNA ⓘ

There are no RNA molecules in this entry.

5.4 Non-standard residues in protein, DNA, RNA chains ⓘ

There are no non-standard protein/DNA/RNA residues in this entry.

5.5 Carbohydrates ⓘ

There are no carbohydrates in this entry.

5.6 Ligand geometry ⓘ

7 ligands are modelled in this entry.

In the following table, the Counts columns list the number of bonds (or angles) for which Mogul statistics could be retrieved, the number of bonds (or angles) that are observed in the model and the number of bonds (or angles) that are defined in the Chemical Component Dictionary. The Link column lists molecule types, if any, to which the group is linked. The Z score for a bond length (or angle) is the number of standard deviations the observed value is removed from the expected value. A bond length (or angle) with $|Z| > 2$ is considered an outlier worth inspection. RMSZ is the root-mean-square of all Z scores of the bond lengths (or angles).

Mol	Type	Chain	Res	Link	Bond lengths			Bond angles		
					Counts	RMSZ	$\# Z > 2$	Counts	RMSZ	$\# Z > 2$
4	2AM	B	703	-	21,25,25	1.83	5 (23%)	24,38,38	1.85	3 (12%)
2	FMN	B	701	-	31,33,33	3.05	14 (45%)	40,50,50	3.53	14 (35%)
5	PO4	B	704	-	4,4,4	2.30	4 (100%)	6,6,6	1.12	1 (16%)
3	FAD	B	702	-	51,58,58	2.26	11 (21%)	60,89,89	1.79	10 (16%)
4	2AM	A	703	-	21,25,25	1.81	5 (23%)	24,38,38	1.87	4 (16%)
2	FMN	A	701	-	31,33,33	3.05	14 (45%)	40,50,50	3.46	16 (40%)
3	FAD	A	702	-	51,58,58	2.27	11 (21%)	60,89,89	1.79	11 (18%)

In the following table, the Chirals column lists the number of chiral outliers, the number of chiral centers analysed, the number of these observed in the model and the number defined in the

Chemical Component Dictionary. Similar counts are reported in the Torsion and Rings columns.
'-' means no outliers of that kind were identified.

Mol	Type	Chain	Res	Link	Chirals	Torsions	Rings
4	2AM	B	703	-	-	1/7/27/27	0/3/3/3
2	FMN	B	701	-	-	0/18/18/18	0/3/3/3
3	FAD	B	702	-	-	1/30/50/50	0/6/6/6
4	2AM	A	703	-	-	1/7/27/27	0/3/3/3
2	FMN	A	701	-	-	0/18/18/18	0/3/3/3
3	FAD	A	702	-	-	1/30/50/50	0/6/6/6

All (64) bond length outliers are listed below:

Mol	Chain	Res	Type	Atoms	Z	Observed(Å)	Ideal(Å)
3	A	702	FAD	C8A-N7A	7.56	1.48	1.34
3	B	702	FAD	C8A-N7A	7.48	1.48	1.34
2	A	701	FMN	C9A-N10	7.44	1.48	1.38
2	B	701	FMN	C9A-N10	7.32	1.48	1.38
2	B	701	FMN	C8M-C8	-6.37	1.38	1.51
2	B	701	FMN	C4A-N5	6.19	1.42	1.33
2	A	701	FMN	C8M-C8	-6.17	1.38	1.51
2	A	701	FMN	C4A-N5	6.09	1.42	1.33
3	A	702	FAD	C7M-C7	-5.75	1.39	1.51
3	A	702	FAD	C8M-C8	-5.74	1.39	1.51
3	B	702	FAD	C8M-C8	-5.73	1.39	1.51
3	B	702	FAD	C7M-C7	-5.72	1.39	1.51
3	B	702	FAD	C10-N1	5.58	1.40	1.33
3	A	702	FAD	C10-N1	5.54	1.40	1.33
2	B	701	FMN	C4A-C10	5.20	1.44	1.38
3	B	702	FAD	C2A-N3A	5.19	1.40	1.32
3	A	702	FAD	C2A-N3A	5.11	1.40	1.32
2	B	701	FMN	C10-N1	5.11	1.39	1.33
4	B	703	2AM	C2-N3	5.09	1.40	1.32
4	A	703	2AM	C2-N3	5.07	1.40	1.32
2	A	701	FMN	C10-N1	5.06	1.39	1.33
2	A	701	FMN	C4A-C10	5.06	1.43	1.38
2	A	701	FMN	C4-N3	4.75	1.41	1.33
2	B	701	FMN	C4-N3	4.33	1.40	1.33
3	B	702	FAD	C4-N3	4.30	1.40	1.33
3	A	702	FAD	C4-N3	4.28	1.40	1.33
2	A	701	FMN	C8-C7	3.80	1.50	1.40
2	B	701	FMN	C8-C7	3.74	1.50	1.40
4	B	703	2AM	C2-N1	3.48	1.40	1.33
4	A	703	2AM	C2-N1	3.48	1.40	1.33
2	B	701	FMN	C9-C9A	3.45	1.47	1.40

Continued on next page...

Continued from previous page...

Mol	Chain	Res	Type	Atoms	Z	Observed(Å)	Ideal(Å)
3	B	702	FAD	C2A-N1A	3.40	1.40	1.33
3	A	702	FAD	C2A-N1A	3.40	1.40	1.33
2	A	701	FMN	C9-C9A	3.38	1.47	1.40
2	B	701	FMN	C5A-N5	3.21	1.40	1.35
2	A	701	FMN	C5A-N5	3.18	1.40	1.35
3	A	702	FAD	C9A-N10	-2.93	1.34	1.38
3	B	702	FAD	C9A-N10	-2.86	1.34	1.38
4	B	703	2AM	C5-C4	-2.76	1.33	1.40
4	A	703	2AM	C5-C4	-2.74	1.33	1.40
3	B	702	FAD	C5A-C4A	-2.67	1.33	1.40
2	A	701	FMN	C9A-C5A	2.63	1.47	1.42
3	A	702	FAD	C5A-C4A	-2.63	1.34	1.40
3	A	702	FAD	C6A-C5A	-2.63	1.33	1.43
2	A	701	FMN	O2'-C2'	2.62	1.48	1.43
4	B	703	2AM	C6-C5	-2.62	1.33	1.43
5	B	704	PO4	P-O2	-2.61	1.46	1.54
4	A	703	2AM	C6-C5	-2.60	1.33	1.43
3	B	702	FAD	C6A-C5A	-2.60	1.33	1.43
2	B	701	FMN	O2'-C2'	2.60	1.48	1.43
2	B	701	FMN	C9A-C5A	2.58	1.47	1.42
2	B	701	FMN	C4'-C3'	2.36	1.57	1.53
5	B	704	PO4	P-O3	-2.36	1.47	1.54
2	A	701	FMN	C1'-N10	-2.35	1.45	1.48
2	B	701	FMN	C1'-N10	-2.32	1.45	1.48
2	A	701	FMN	C4'-C3'	2.31	1.57	1.53
3	A	702	FAD	O4B-C1B	2.28	1.44	1.41
3	B	702	FAD	O4B-C1B	2.24	1.44	1.41
4	B	703	2AM	O4'-C1'	2.20	1.44	1.41
5	B	704	PO4	P-O4	-2.12	1.48	1.54
2	A	701	FMN	C7M-C7	2.11	1.55	1.51
4	A	703	2AM	O4'-C1'	2.08	1.44	1.41
5	B	704	PO4	P-O1	-2.08	1.45	1.50
2	B	701	FMN	C7M-C7	2.03	1.55	1.51

All (59) bond angle outliers are listed below:

Mol	Chain	Res	Type	Atoms	Z	Observed(°)	Ideal(°)
2	B	701	FMN	C4-N3-C2	14.53	127.41	115.14
2	A	701	FMN	C4-N3-C2	14.20	127.13	115.14
2	A	701	FMN	C10-C4A-N5	8.48	127.12	121.26
2	B	701	FMN	C10-C4A-N5	8.45	127.10	121.26
2	B	701	FMN	C4-C4A-C10	-7.56	114.95	119.95

Continued on next page...

Continued from previous page...

Mol	Chain	Res	Type	Atoms	Z	Observed(°)	Ideal(°)
2	A	701	FMN	C4-C4A-C10	-7.50	114.98	119.95
3	A	702	FAD	N3A-C2A-N1A	-7.24	117.37	128.68
3	B	702	FAD	N3A-C2A-N1A	-7.14	117.52	128.68
4	B	703	2AM	N3-C2-N1	-7.04	117.68	128.68
4	A	703	2AM	N3-C2-N1	-7.03	117.70	128.68
3	B	702	FAD	C4-N3-C2	5.96	120.18	115.14
3	A	702	FAD	C4-N3-C2	5.89	120.12	115.14
2	A	701	FMN	C4A-C4-N3	-5.04	116.53	123.43
2	B	701	FMN	C4A-C4-N3	-5.01	116.58	123.43
3	A	702	FAD	C1'-N10-C9A	4.72	122.00	118.29
3	B	702	FAD	C1'-N10-C9A	4.28	121.66	118.29
2	B	701	FMN	C4A-C10-N10	-3.81	116.39	120.30
2	A	701	FMN	C4A-C10-N10	-3.64	116.56	120.30
2	B	701	FMN	P-O5'-C5'	3.56	128.10	118.30
2	A	701	FMN	O4'-C4'-C3'	-3.42	100.79	109.10
2	B	701	FMN	O4'-C4'-C3'	-3.40	100.83	109.10
2	A	701	FMN	C6-C5A-N5	-3.36	115.35	119.05
2	B	701	FMN	C6-C5A-N5	-3.35	115.36	119.05
3	B	702	FAD	C4X-N5-C5X	3.27	120.04	116.77
2	A	701	FMN	C5A-C9A-N10	-3.13	115.44	117.72
3	B	702	FAD	C10-C4X-N5	-3.12	119.10	121.26
2	B	701	FMN	C5A-C9A-N10	-3.08	115.48	117.72
3	A	702	FAD	C4X-N5-C5X	3.00	119.77	116.77
3	A	702	FAD	C10-C4X-N5	-2.98	119.20	121.26
2	A	701	FMN	P-O5'-C5'	2.98	126.50	118.30
3	B	702	FAD	P-O3P-PA	-2.90	122.87	132.83
3	A	702	FAD	C5X-C9A-N10	2.79	119.73	117.72
2	B	701	FMN	C9A-C5A-N5	2.78	126.71	122.36
2	A	701	FMN	C1'-N10-C9A	2.75	120.45	118.29
2	A	701	FMN	C9A-C5A-N5	2.71	126.60	122.36
3	B	702	FAD	C5A-C6A-N6A	-2.70	116.24	120.35
2	A	701	FMN	C4A-N5-C5A	-2.70	114.08	116.77
3	A	702	FAD	C5A-C6A-N6A	-2.68	116.27	120.35
2	B	701	FMN	C4A-N5-C5A	-2.67	114.11	116.77
3	B	702	FAD	C5X-C9A-N10	2.67	119.65	117.72
2	B	701	FMN	O3P-P-O5'	-2.65	99.68	106.73
3	A	702	FAD	P-O3P-PA	-2.65	123.75	132.83
3	A	702	FAD	C4X-C4-N3	-2.62	119.85	123.43
2	B	701	FMN	C8M-C8-C7	2.56	125.99	120.74
2	A	701	FMN	C8M-C8-C7	2.55	125.97	120.74
3	B	702	FAD	C4X-C4-N3	-2.52	119.98	123.43
4	A	703	2AM	O4'-C1'-C2'	-2.52	102.22	106.59

Continued on next page...

Continued from previous page...

Mol	Chain	Res	Type	Atoms	Z	Observed(°)	Ideal(°)
3	B	702	FAD	C2B-C3B-C4B	-2.51	97.76	102.64
4	A	703	2AM	C5-C6-N6	-2.47	116.60	120.35
3	A	702	FAD	C2B-C3B-C4B	-2.39	97.99	102.64
2	A	701	FMN	O2P-P-O1P	2.34	119.83	110.68
2	B	701	FMN	O2P-P-O1P	2.34	119.83	110.68
5	B	704	PO4	O4-P-O3	-2.31	100.56	107.97
4	B	703	2AM	C5-C6-N6	-2.30	116.85	120.35
4	B	703	2AM	C3'-C2'-C1'	-2.24	98.68	102.89
2	A	701	FMN	O3P-P-O5'	-2.16	100.99	106.73
4	A	703	2AM	C5'-C4'-C3'	-2.12	109.97	115.09
3	A	702	FAD	C9A-N10-C10	-2.08	119.19	121.91
2	A	701	FMN	C4'-C3'-C2'	-2.06	109.07	113.36

There are no chirality outliers.

All (4) torsion outliers are listed below:

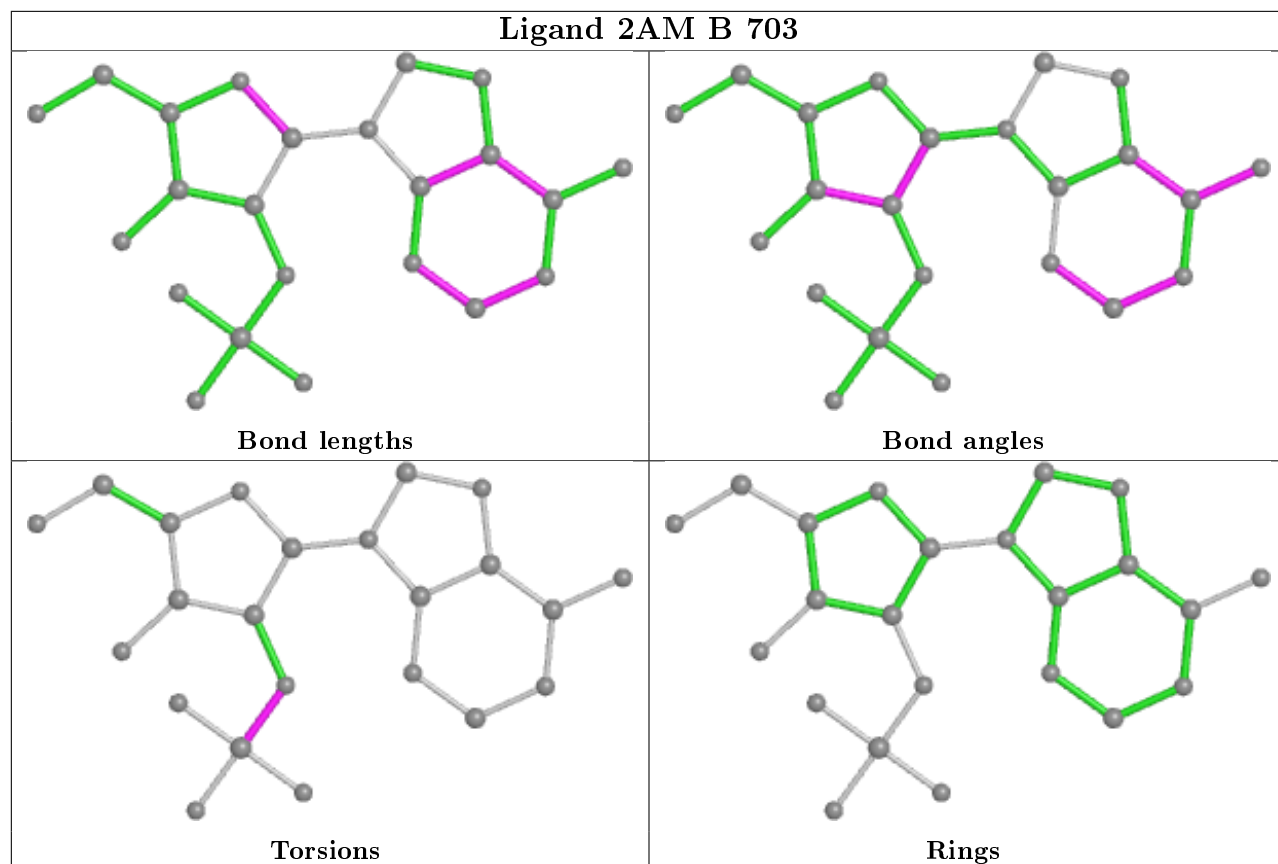
Mol	Chain	Res	Type	Atoms
4	B	703	2AM	C2'-O2'-P-O1P
4	A	703	2AM	C2'-O2'-P-O1P
3	A	702	FAD	PA-O3P-P-O1P
3	B	702	FAD	PA-O3P-P-O2P

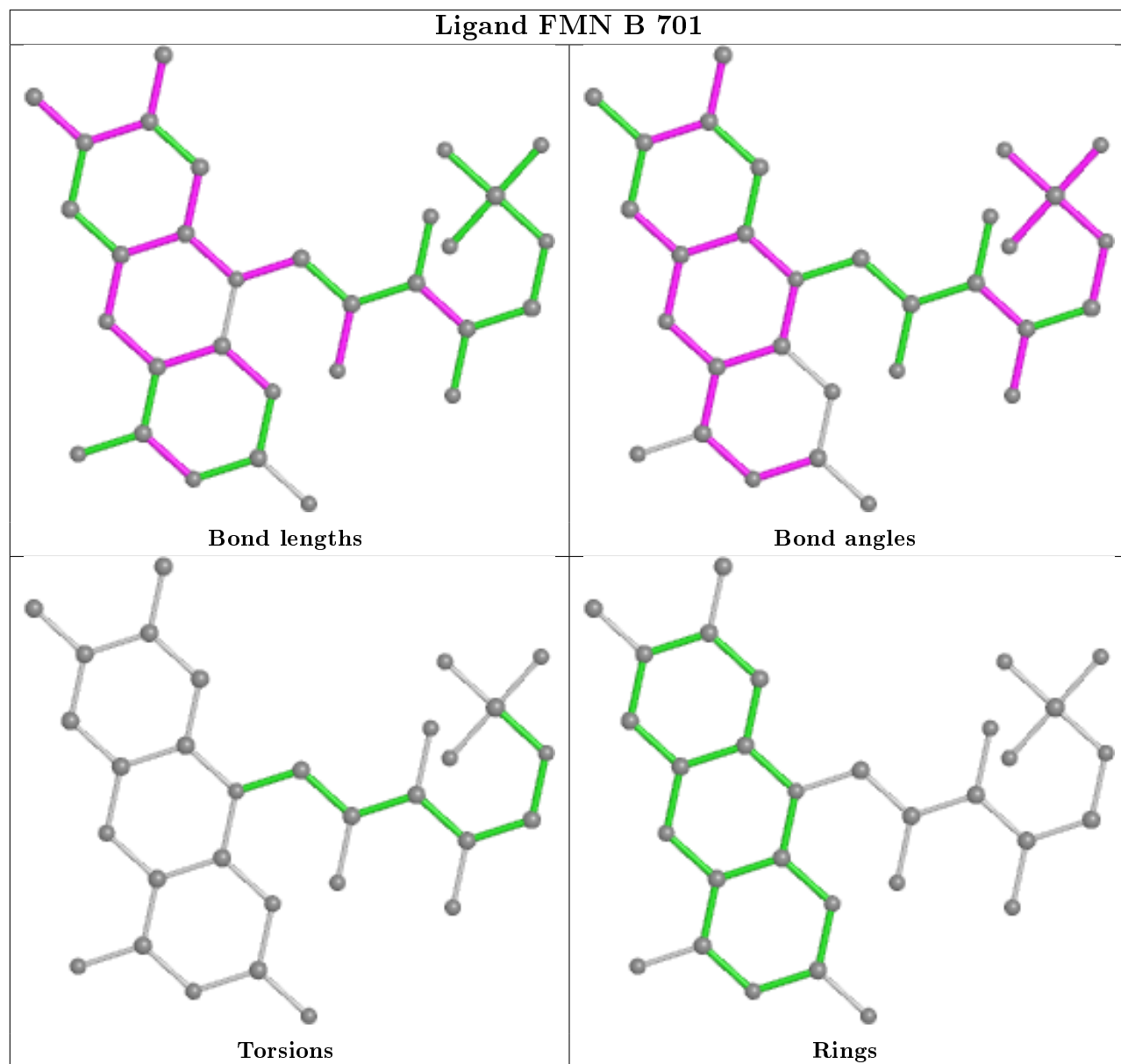
There are no ring outliers.

1 monomer is involved in 1 short contact:

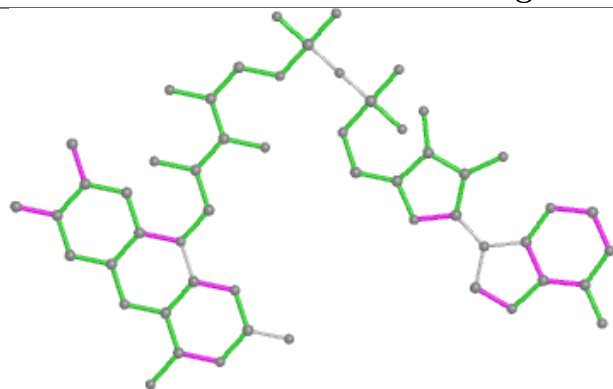
Mol	Chain	Res	Type	Clashes	Symm-Clashes
2	A	701	FMN	1	0

The following is a two-dimensional graphical depiction of Mogul quality analysis of bond lengths, bond angles, torsion angles, and ring geometry for all instances of the Ligand of Interest. In addition, ligands with molecular weight > 250 and outliers as shown on the validation Tables will also be included. For torsion angles, if less than 5% of the Mogul distribution of torsion angles is within 10 degrees of the torsion angle in question, then that torsion angle is considered an outlier. Any bond that is central to one or more torsion angles identified as an outlier by Mogul will be highlighted in the graph. For rings, the root-mean-square deviation (RMSD) between the ring in question and similar rings identified by Mogul is calculated over all ring torsion angles. If the average RMSD is greater than 60 degrees and the minimal RMSD between the ring in question and any Mogul-identified rings is also greater than 60 degrees, then that ring is considered an outlier. The outliers are highlighted in purple. The color gray indicates Mogul did not find sufficient equivalents in the CSD to analyse the geometry.

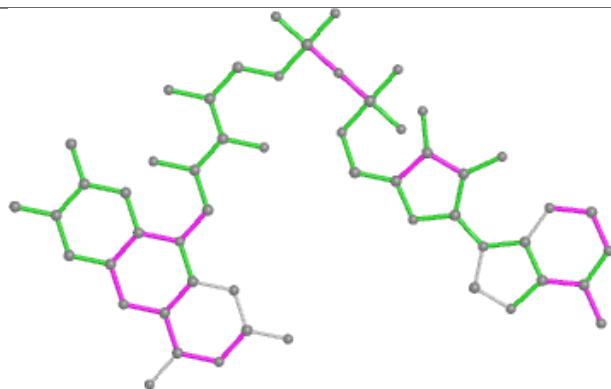




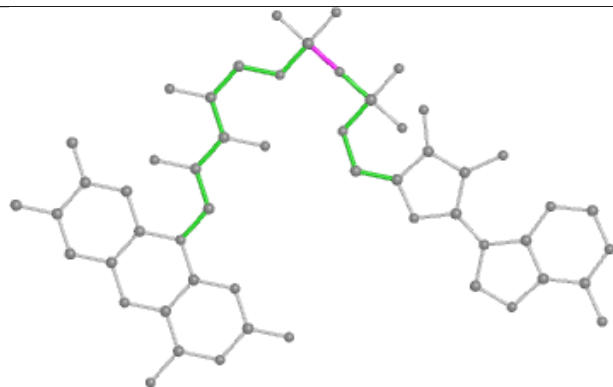
Ligand FAD B 702



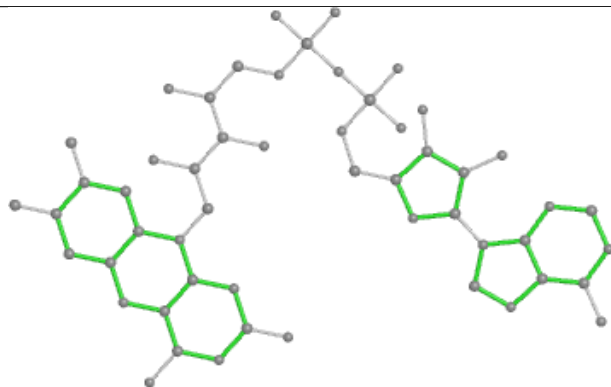
Bond lengths



Bond angles

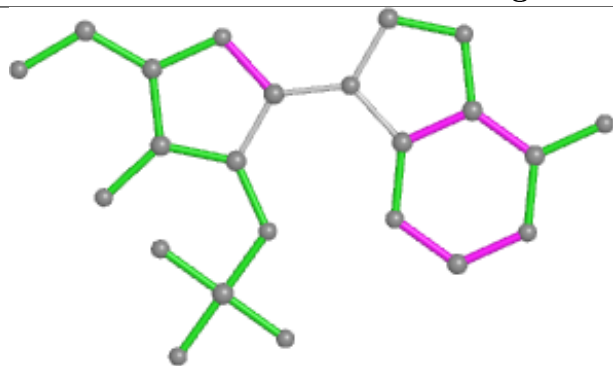


Torsions

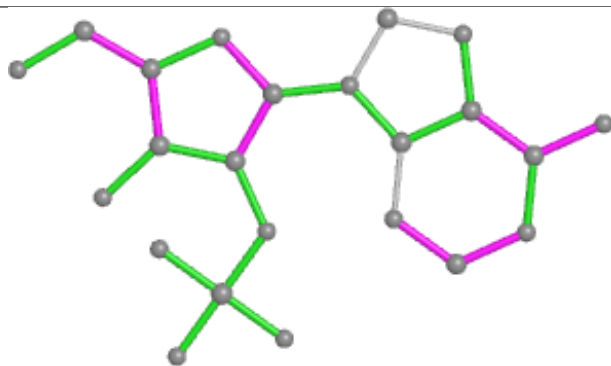


Rings

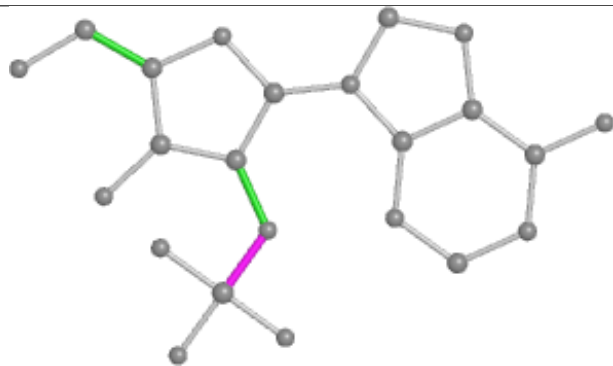
Ligand 2AM A 703



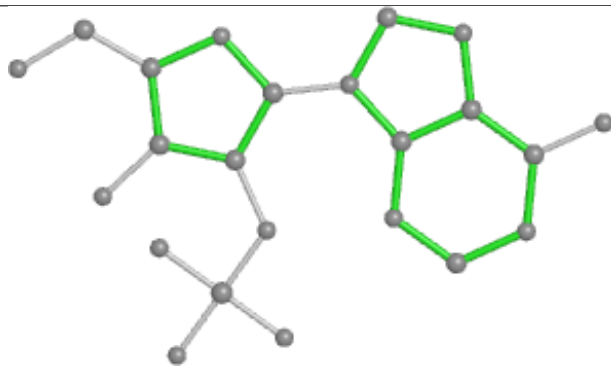
Bond lengths



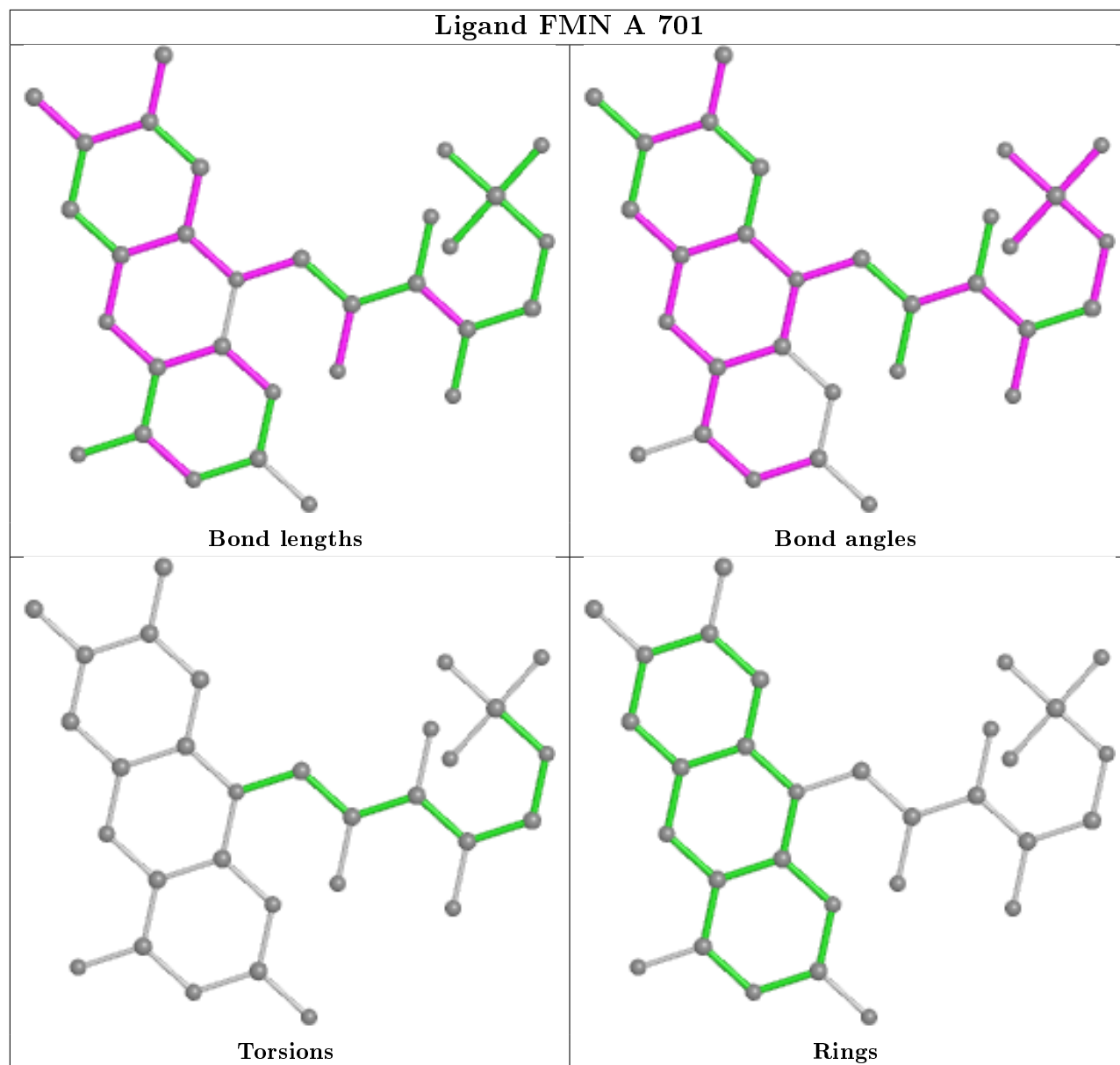
Bond angles

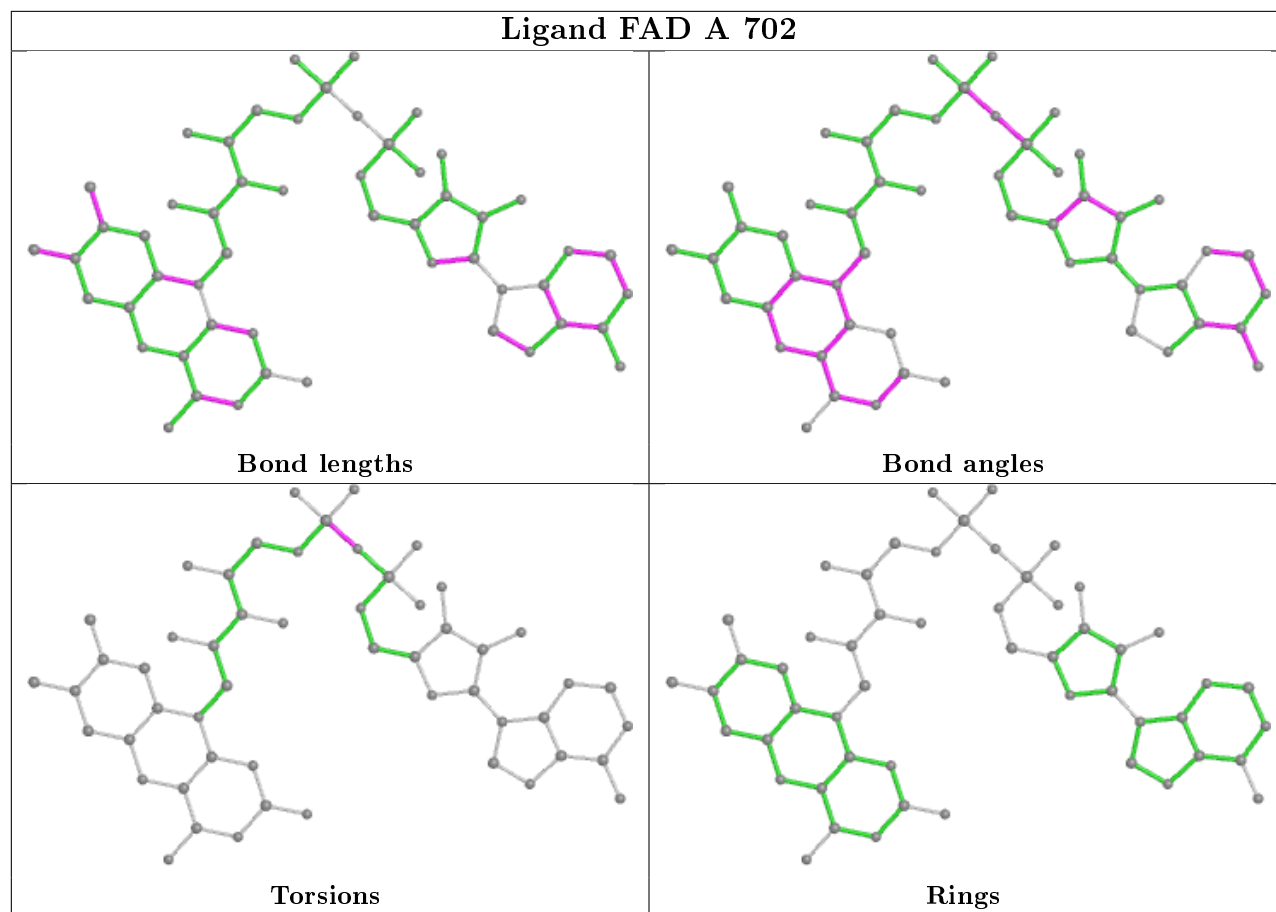


Torsions



Rings





5.7 Other polymers [i](#)

There are no such residues in this entry.

5.8 Polymer linkage issues [i](#)

There are no chain breaks in this entry.

6 Fit of model and data ⓘ

6.1 Protein, DNA and RNA chains ⓘ

In the following table, the column labelled ‘#RSRZ> 2’ contains the number (and percentage) of RSRZ outliers, followed by percent RSRZ outliers for the chain as percentile scores relative to all X-ray entries and entries of similar resolution. The OWAB column contains the minimum, median, 95th percentile and maximum values of the occupancy-weighted average B-factor per residue. The column labelled ‘Q< 0.9’ lists the number of (and percentage) of residues with an average occupancy less than 0.9.

Mol	Chain	Analysed	<RSRZ>	#RSRZ>2	OWAB(Å ²)	Q<0.9
1	A	609/622 (97%)	0.11	14 (2%) 60 63	22, 32, 49, 64	0
1	B	605/622 (97%)	0.60	73 (12%) 4 5	19, 37, 76, 90	0
All	All	1214/1244 (97%)	0.35	87 (7%) 15 17	19, 34, 70, 90	0

All (87) RSRZ outliers are listed below:

Mol	Chain	Res	Type	RSRZ
1	B	195	LEU	6.5
1	B	104	ARG	5.8
1	B	163	LEU	5.5
1	B	192	LEU	5.3
1	B	125	LEU	4.9
1	B	106	GLY	4.8
1	B	103	HIS	4.8
1	B	120	ALA	4.8
1	B	161	VAL	4.7
1	B	242	ILE	4.7
1	B	119	LEU	4.6
1	A	61	ALA	4.4
1	B	191	ARG	4.3
1	B	200	ILE	4.3
1	B	187	TYR	4.2
1	B	231	PHE	4.1
1	B	155	TRP	3.9
1	B	105	TYR	3.9
1	B	233	VAL	3.8
1	B	160	ASP	3.7
1	B	80	ILE	3.7
1	B	166	VAL	3.6
1	B	252	ASP	3.5
1	B	224	TRP	3.4

Continued on next page...

Continued from previous page...

Mol	Chain	Res	Type	RSRZ
1	B	168	PHE	3.4
1	B	171	PHE	3.3
1	B	227	VAL	3.3
1	B	235	ALA	3.3
1	B	180	HIS	3.3
1	B	85	GLY	3.2
1	A	678	SER	3.2
1	A	500	ALA	3.2
1	B	65	LYS	3.2
1	B	188	VAL	3.2
1	B	501	GLY	3.2
1	B	135	PHE	3.2
1	B	152	PHE	3.2
1	B	157	GLN	3.1
1	B	128	ILE	3.0
1	B	162	ASP	2.9
1	B	151	ASP	2.9
1	B	142	GLU	2.8
1	B	108	ARG	2.8
1	B	102	ALA	2.8
1	B	164	THR	2.8
1	B	351	LEU	2.8
1	B	156	LEU	2.7
1	B	167	LYS	2.7
1	B	101	ASP	2.7
1	B	241	SER	2.7
1	A	255	VAL	2.7
1	A	506	ARG	2.6
1	B	232	GLY	2.6
1	B	225	PRO	2.6
1	B	158	GLU	2.6
1	A	140	TYR	2.5
1	B	107	MET	2.5
1	B	75	LYS	2.5
1	A	278	ALA	2.4
1	B	179	GLU	2.4
1	A	273	LYS	2.4
1	B	165	GLY	2.4
1	A	266	LEU	2.4
1	B	72	LYS	2.3
1	A	141	GLY	2.3
1	B	83	PHE	2.3

Continued on next page...

Continued from previous page...

Mol	Chain	Res	Type	RSRZ
1	B	228	CYS	2.3
1	B	122	LEU	2.3
1	B	69	PHE	2.3
1	B	77	GLY	2.3
1	A	179	GLU	2.3
1	B	198	GLN	2.2
1	B	84	TYR	2.2
1	B	217	ILE	2.2
1	A	633	ALA	2.2
1	A	251	GLU	2.1
1	B	78	ARG	2.1
1	B	169	ALA	2.1
1	B	71	GLU	2.1
1	B	100	LYS	2.1
1	B	313	ARG	2.0
1	B	184	MET	2.0
1	A	62	PRO	2.0
1	B	253	MET	2.0
1	B	99	SER	2.0
1	B	149	ALA	2.0
1	B	453	ALA	2.0

6.2 Non-standard residues in protein, DNA, RNA chains ⓘ

There are no non-standard protein/DNA/RNA residues in this entry.

6.3 Carbohydrates ⓘ

There are no carbohydrates in this entry.

6.4 Ligands ⓘ

In the following table, the Atoms column lists the number of modelled atoms in the group and the number defined in the chemical component dictionary. The B-factors column lists the minimum, median, 95th percentile and maximum values of B factors of atoms in the group. The column labelled 'Q< 0.9' lists the number of atoms with occupancy less than 0.9.

Mol	Type	Chain	Res	Atoms	RSCC	RSR	B-factors(\AA^2)	Q<0.9
5	PO4	B	704	5/5	0.84	0.18	68,71,71,71	0
2	FMN	B	701	31/31	0.93	0.14	49,60,63,63	0

Continued on next page...

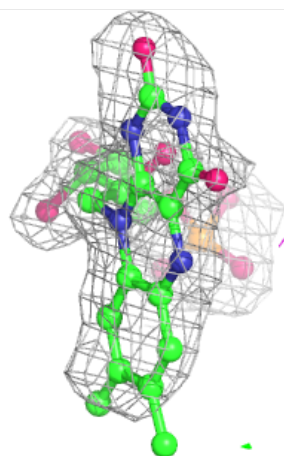
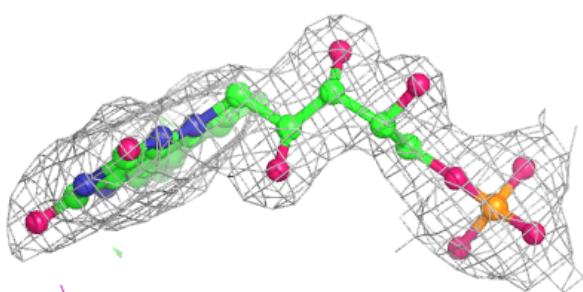
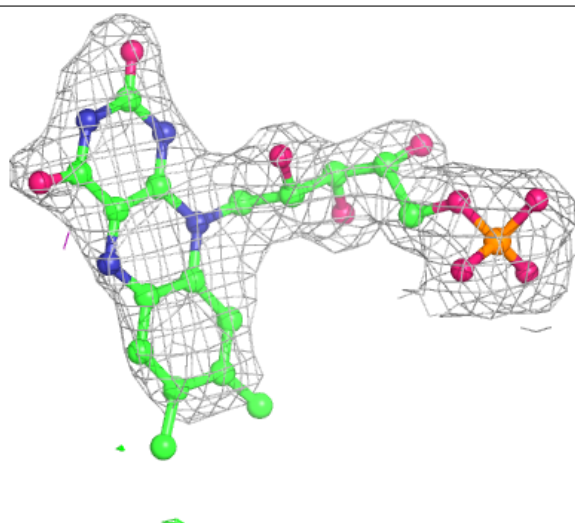
Continued from previous page...

Mol	Type	Chain	Res	Atoms	RSCC	RSR	B-factors(\AA^2)	Q<0.9
2	FMN	A	701	31/31	0.94	0.12	33,39,43,45	0
4	2AM	A	703	23/23	0.97	0.10	26,27,29,38	0
4	2AM	B	703	23/23	0.97	0.11	25,27,31,38	0
3	FAD	B	702	53/53	0.98	0.15	18,22,30,32	0
3	FAD	A	702	53/53	0.98	0.10	20,24,30,33	0

The following is a graphical depiction of the model fit to experimental electron density of all instances of the Ligand of Interest. In addition, ligands with molecular weight > 250 and outliers as shown on the geometry validation Tables will also be included. Each fit is shown from different orientation to approximate a three-dimensional view.

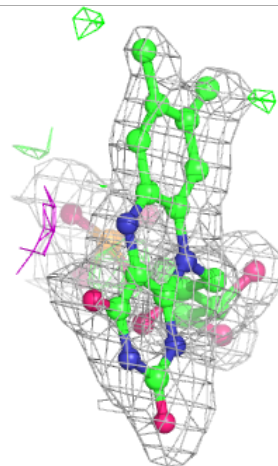
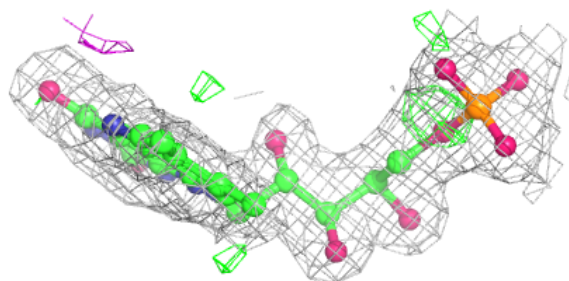
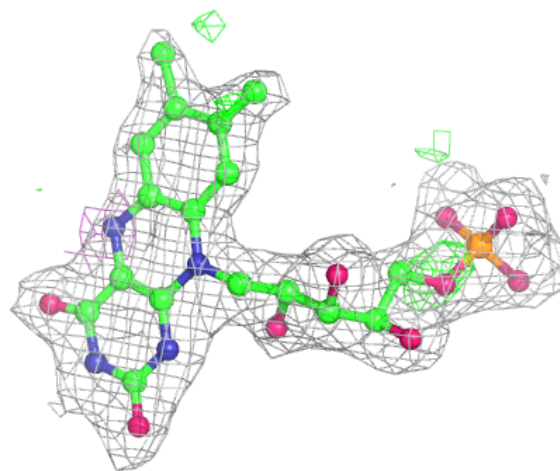
Electron density around FMN B 701:

2mF_o-DF_c (at 0.7 rmsd) in gray
mF_o-DF_c (at 3 rmsd) in purple (negative)
and green (positive)



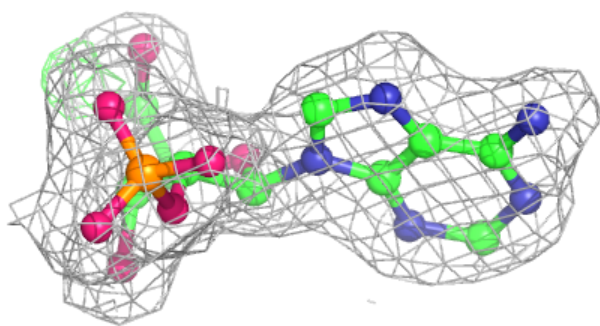
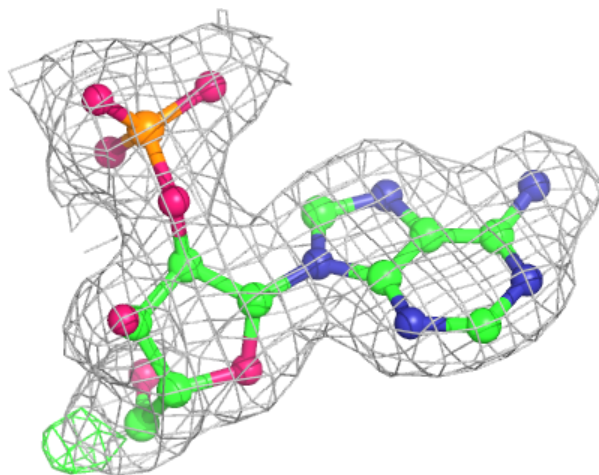
Electron density around FMN A 701:

$2mF_o-DF_c$ (at 0.7 rmsd) in gray
 mF_o-DF_c (at 3 rmsd) in purple (negative)
and green (positive)



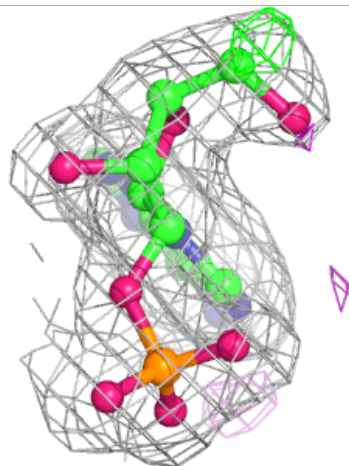
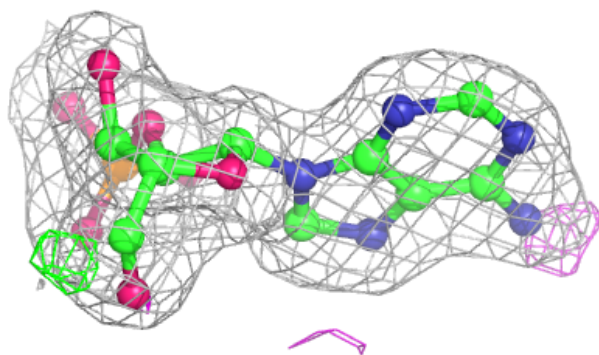
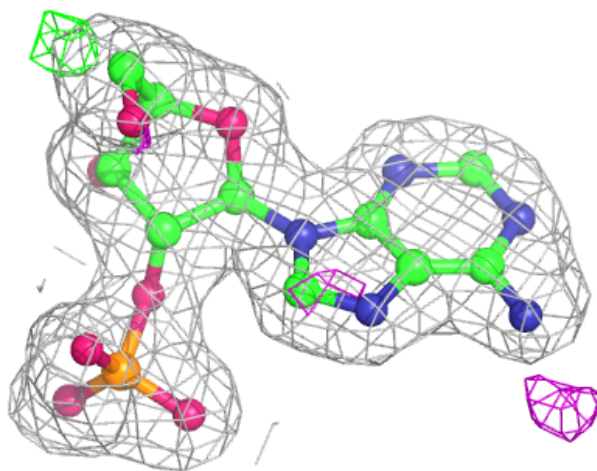
Electron density around 2AM A 703:

$2mF_o-DF_c$ (at 0.7 rmsd) in gray
 mF_o-DF_c (at 3 rmsd) in purple (negative)
and green (positive)



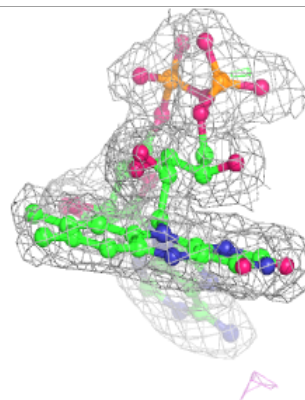
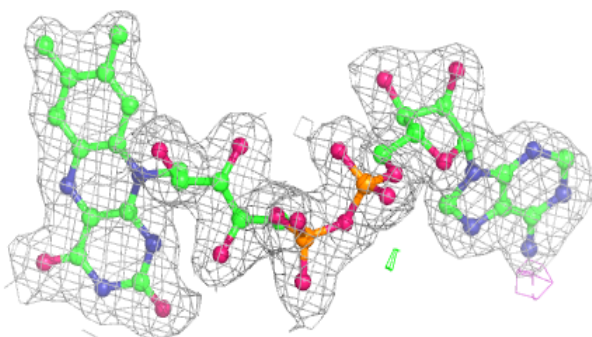
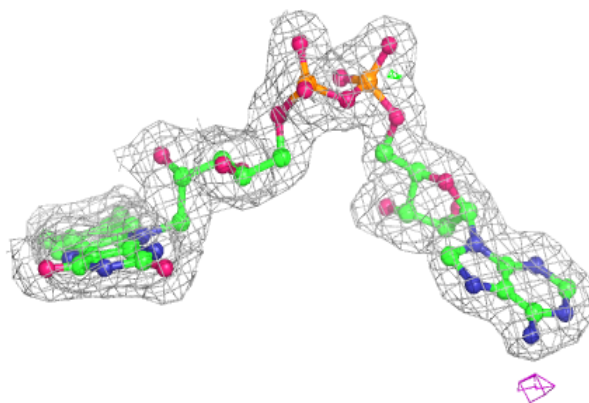
Electron density around 2AM B 703:

$2mF_o-DF_c$ (at 0.7 rmsd) in gray
 mF_o-DF_c (at 3 rmsd) in purple (negative)
and green (positive)

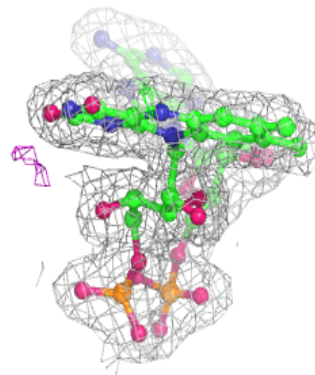
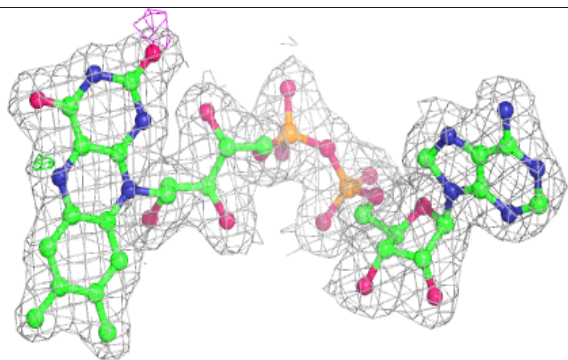
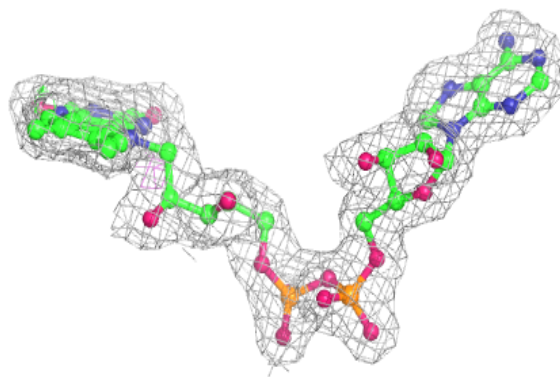


Electron density around FAD B 702:

$2mF_o-DF_c$ (at 0.7 rmsd) in gray
 mF_o-DF_c (at 3 rmsd) in purple (negative)
and green (positive)

**Electron density around FAD A 702:**

$2mF_o-DF_c$ (at 0.7 rmsd) in gray
 mF_o-DF_c (at 3 rmsd) in purple (negative)
and green (positive)



6.5 Other polymers

There are no such residues in this entry.