



# Full wwPDB X-ray Structure Validation Report ⓘ

May 28, 2020 – 03:04 am BST

PDB ID : 5YIJ  
Title : Structure of a Legionella effector with substrates  
Authors : Feng, Y.; Mu, Y.; Wang, H.  
Deposited on : 2017-10-05  
Resolution : 3.18 Å(reported)

This is a Full wwPDB X-ray Structure Validation Report for a publicly released PDB entry.

We welcome your comments at [validation@mail.wwpdb.org](mailto:validation@mail.wwpdb.org)

A user guide is available at

<https://www.wwpdb.org/validation/2017/XrayValidationReportHelp>

with specific help available everywhere you see the ⓘ symbol.

---

The following versions of software and data (see [references ⓘ](#)) were used in the production of this report:

MolProbity : 4.02b-467  
Mogul : 1.8.5 (274361), CSD as541be (2020)  
Xtriage (Phenix) : 1.13  
EDS : 2.11  
buster-report : 1.1.7 (2018)  
Percentile statistics : 20191225.v01 (using entries in the PDB archive December 25th 2019)  
Refmac : 5.8.0158  
CCP4 : 7.0.044 (Gargrove)  
Ideal geometry (proteins) : Engh & Huber (2001)  
Ideal geometry (DNA, RNA) : Parkinson et al. (1996)  
Validation Pipeline (wwPDB-VP) : 2.11

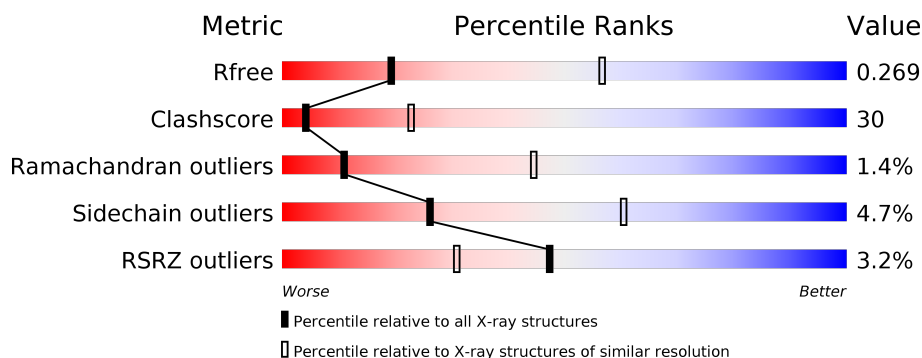
# 1 Overall quality at a glance

The following experimental techniques were used to determine the structure:

## *X-RAY DIFFRACTION*

The reported resolution of this entry is 3.18 Å.

Percentile scores (ranging between 0-100) for global validation metrics of the entry are shown in the following graphic. The table shows the number of entries on which the scores are based.



Metric	Whole archive (#Entries)	Similar resolution (#Entries, resolution range(Å))
$R_{free}$	130704	1467 (3.20-3.16)
Clashscore	141614	1599 (3.20-3.16)
Ramachandran outliers	138981	1574 (3.20-3.16)
Sidechain outliers	138945	1573 (3.20-3.16)
RSRZ outliers	127900	1423 (3.20-3.16)

The table below summarises the geometric issues observed across the polymeric chains and their fit to the electron density. The red, orange, yellow and green segments on the lower bar indicate the fraction of residues that contain outliers for  $\geq 3$ , 2, 1 and 0 types of geometric quality criteria respectively. A grey segment represents the fraction of residues that are not modelled. The numeric value for each fraction is indicated below the corresponding segment, with a dot representing fractions  $\leq 5\%$ . The upper red bar (where present) indicates the fraction of residues that have poor fit to the electron density. The numeric value is given above the bar.

Mol	Chain	Length	Quality of chain
1	A	968	<div> <div>54%</div> <div>42%</div> <div>• •</div> </div>
2	C	78	<div> <div>27%</div> <div>27%</div> <div>58%</div> <div>6%</div> <div>9%</div> </div>
2	D	78	<div> <div>9%</div> <div>46%</div> <div>46%</div> <div>5%</div> <div>•</div> </div>
2	G	78	<div> <div>62%</div> <div>36%</div> <div>• •</div> </div>

## 2 Entry composition

There are 3 unique types of molecules in this entry. The entry contains 9426 atoms, of which 0 are hydrogens and 0 are deuteriums.

In the tables below, the ZeroOcc column contains the number of atoms modelled with zero occupancy, the AltConf column contains the number of residues with at least one atom in alternate conformation and the Trace column contains the number of residues modelled with at most 2 atoms.

- Molecule 1 is a protein called SdeA.

Mol	Chain	Residues	Atoms					ZeroOcc	AltConf	Trace
			Total	C	N	O	S			
1	A	959	7607	4770	1332	1478	27	0	0	0

There are 8 discrepancies between the modelled and reference sequences:

Chain	Residue	Modelled	Actual	Comment	Reference
A	1191	LEU	-	expression tag	UNP Q6RCR0
A	1192	GLU	-	expression tag	UNP Q6RCR0
A	1193	HIS	-	expression tag	UNP Q6RCR0
A	1194	HIS	-	expression tag	UNP Q6RCR0
A	1195	HIS	-	expression tag	UNP Q6RCR0
A	1196	HIS	-	expression tag	UNP Q6RCR0
A	1197	HIS	-	expression tag	UNP Q6RCR0
A	1198	HIS	-	expression tag	UNP Q6RCR0

- Molecule 2 is a protein called Ubiquitin.

Mol	Chain	Residues	Atoms					ZeroOcc	AltConf	Trace
			Total	C	N	O	S			
2	C	71	563	356	94	112	1	0	0	0
2	D	76	601	378	105	117	1	0	0	0
2	G	77	611	384	108	118	1	0	0	0

There are 6 discrepancies between the modelled and reference sequences:

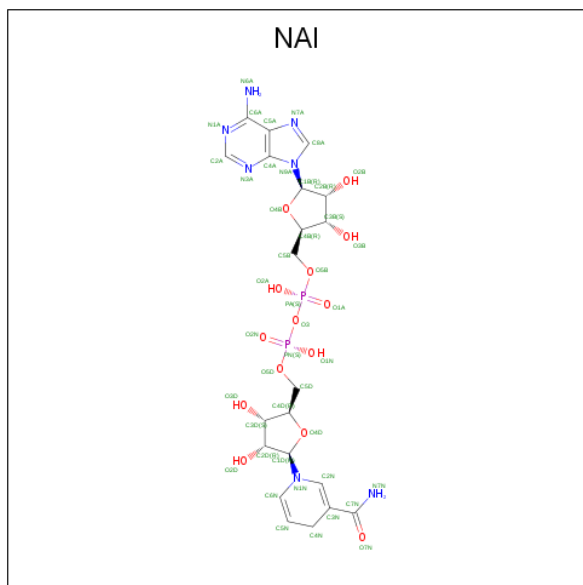
Chain	Residue	Modelled	Actual	Comment	Reference
C	-1	SER	-	expression tag	UNP P0CG47
C	0	HIS	-	expression tag	UNP P0CG47
D	-1	SER	-	expression tag	UNP P0CG47
D	0	HIS	-	expression tag	UNP P0CG47

*Continued on next page...*

Continued from previous page...

Chain	Residue	Modelled	Actual	Comment	Reference
G	-1	SER	-	expression tag	UNP P0CG47
G	0	HIS	-	expression tag	UNP P0CG47

- Molecule 3 is 1,4-DIHYDRONICOTINAMIDE ADENINE DINUCLEOTIDE (three-letter code: NAI) (formula:  $C_{21}H_{29}N_7O_{14}P_2$ ).

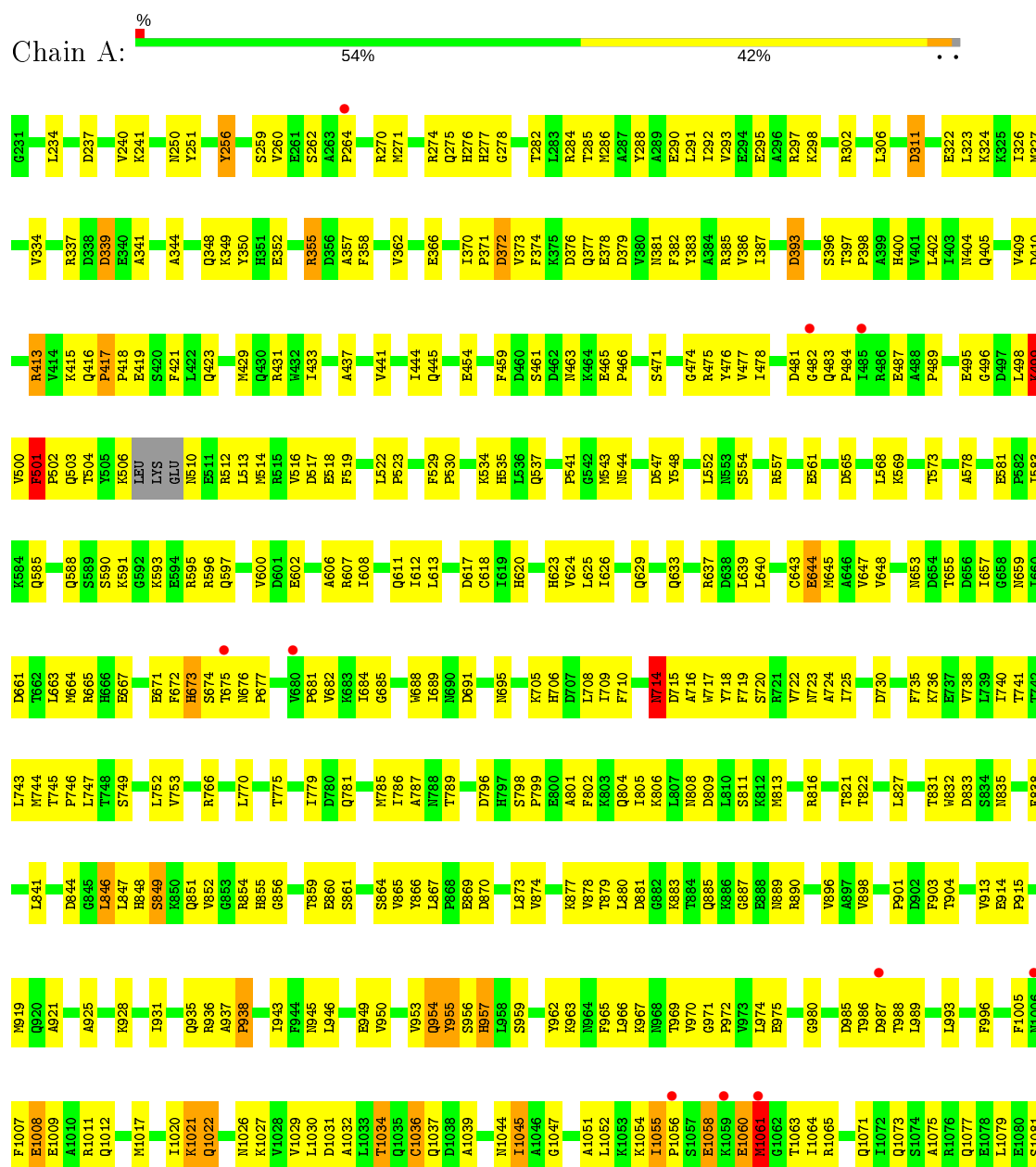


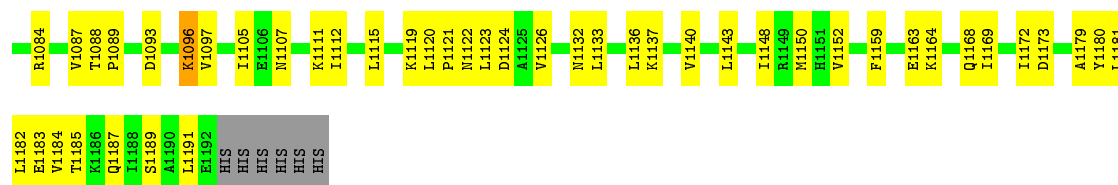
Mol	Chain	Residues	Atoms					ZeroOcc	AltConf
3	A	1	Total	C	N	O	P	0	0
			44	21	7	14	2		

### 3 Residue-property plots

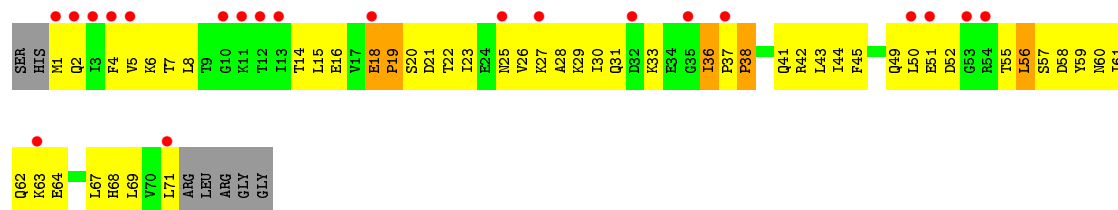
These plots are drawn for all protein, RNA and DNA chains in the entry. The first graphic for a chain summarises the proportions of the various outlier classes displayed in the second graphic. The second graphic shows the sequence view annotated by issues in geometry and electron density. Residues are color-coded according to the number of geometric quality criteria for which they contain at least one outlier: green = 0, yellow = 1, orange = 2 and red = 3 or more. A red dot above a residue indicates a poor fit to the electron density ( $\text{RSRZ} > 2$ ). Stretches of 2 or more consecutive residues without any outlier are shown as a green connector. Residues present in the sample, but not in the model, are shown in grey.

#### • Molecule 1: SdeA

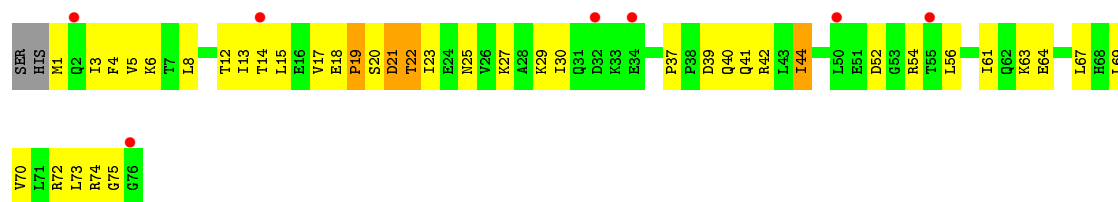




• Molecule 2: Ubiquitin



• Molecule 2: Ubiquitin



• Molecule 2: Ubiquitin



## 4 Data and refinement statistics

Property	Value	Source
Space group	C 1 2 1	Depositor
Cell constants a, b, c, $\alpha$ , $\beta$ , $\gamma$	107.78Å 145.85Å 103.35Å 90.00° 103.82° 90.00°	Depositor
Resolution (Å)	39.96 – 3.18 39.95 – 3.18	Depositor EDS
% Data completeness (in resolution range)	92.0 (39.96-3.18) 92.4 (39.95-3.18)	Depositor EDS
$R_{merge}$	(Not available)	Depositor
$R_{sym}$	(Not available)	Depositor
$\langle I/\sigma(I) \rangle$ <sup>1</sup>	5.80 (at 3.18Å)	Xtriage
Refinement program	PHENIX 1.9_1692	Depositor
R, $R_{free}$	0.226 , 0.275 0.231 , 0.269	Depositor DCC
$R_{free}$ test set	1241 reflections (5.14%)	wwPDB-VP
Wilson B-factor (Å <sup>2</sup> )	49.0	Xtriage
Anisotropy	0.143	Xtriage
Bulk solvent $k_{sol}$ (e/Å <sup>3</sup> ), $B_{sol}$ (Å <sup>2</sup> )	0.31 , 46.4	EDS
L-test for twinning <sup>2</sup>	$\langle  L  \rangle = 0.50$ , $\langle L^2 \rangle = 0.33$	Xtriage
Estimated twinning fraction	No twinning to report.	Xtriage
$F_o, F_c$ correlation	0.86	EDS
Total number of atoms	9426	wwPDB-VP
Average B, all atoms (Å <sup>2</sup> )	50.0	wwPDB-VP

Xtriage's analysis on translational NCS is as follows: *The largest off-origin peak in the Patterson function is 3.97% of the height of the origin peak. No significant pseudotranslation is detected.*

<sup>1</sup>Intensities estimated from amplitudes.

<sup>2</sup>Theoretical values of  $\langle |L| \rangle$ ,  $\langle L^2 \rangle$  for acentric reflections are 0.5, 0.333 respectively for untwinned datasets, and 0.375, 0.2 for perfectly twinned datasets.

## 5 Model quality [i](#)

### 5.1 Standard geometry [i](#)

Bond lengths and bond angles in the following residue types are not validated in this section: NAI

The Z score for a bond length (or angle) is the number of standard deviations the observed value is removed from the expected value. A bond length (or angle) with  $|Z| > 5$  is considered an outlier worth inspection. RMSZ is the root-mean-square of all Z scores of the bond lengths (or angles).

Mol	Chain	Bond lengths		Bond angles	
		RMSZ	# Z  >5	RMSZ	# Z  >5
1	A	0.36	0/7740	0.47	3/10447 (0.0%)
2	C	0.30	0/569	0.65	0/767
2	D	0.30	0/607	0.55	0/816
2	G	0.25	0/618	0.52	0/831
All	All	0.35	0/9534	0.49	3/12861 (0.0%)

There are no bond length outliers.

All (3) bond angle outliers are listed below:

Mol	Chain	Res	Type	Atoms	Z	Observed(°)	Ideal(°)
1	A	501	PHE	N-CA-C	-8.39	88.34	111.00
1	A	938	PRO	N-CA-CB	5.54	109.95	103.30
1	A	1061	MET	N-CA-C	5.19	125.02	111.00

There are no chirality outliers.

There are no planarity outliers.

### 5.2 Too-close contacts [i](#)

In the following table, the Non-H and H(model) columns list the number of non-hydrogen atoms and hydrogen atoms in the chain respectively. The H(added) column lists the number of hydrogen atoms added and optimized by MolProbity. The Clashes column lists the number of clashes within the asymmetric unit, whereas Symm-Clashes lists symmetry related clashes.

Mol	Chain	Non-H	H(model)	H(added)	Clashes	Symm-Clashes
1	A	7607	0	7527	416	0
2	C	563	0	586	78	0
2	D	601	0	629	57	0
2	G	611	0	636	31	0

*Continued on next page...*



*Continued from previous page...*

Mol	Chain	Non-H	H(model)	H(added)	Clashes	Symm-Clashes
3	A	44	0	27	9	0
All	All	9426	0	9405	556	0

The all-atom clashscore is defined as the number of clashes found per 1000 atoms (including hydrogen atoms). The all-atom clashscore for this structure is 30.

All (556) close contacts within the same asymmetric unit are listed below, sorted by their clash magnitude.

Atom-1	Atom-2	Interatomic distance (Å)	Clash overlap (Å)
2:C:21:ASP:HB2	2:C:56:LEU:HD23	1.23	1.20
1:A:1061:MET:CE	1:A:1064:ILE:HD13	1.81	1.11
1:A:986:THR:HB	1:A:988:THR:HG22	1.17	1.10
1:A:1061:MET:HE1	1:A:1064:ILE:HD13	1.20	1.09
2:G:1:MET:HB2	2:G:63:LYS:HG2	1.32	1.08
2:C:1:MET:HA	2:C:63:LYS:HG2	1.31	1.06
1:A:1060:GLU:N	1:A:1060:GLU:OE1	1.90	1.05
2:D:40:GLN:HG2	2:D:73:LEU:HD13	1.39	1.05
2:D:1:MET:SD	2:D:19:PRO:HG3	1.98	1.03
1:A:953:VAL:HG21	1:A:966:LEU:HD12	1.36	1.01
1:A:477:VAL:HG21	1:A:500:VAL:HG21	1.42	0.99
1:A:822:THR:HG21	1:A:827:LEU:HD23	1.45	0.98
1:A:855:HIS:HA	1:A:859:THR:HG21	1.45	0.97
1:A:1058:GLU:O	1:A:1061:MET:N	1.97	0.97
2:G:24:GLU:HB2	2:G:52:ASP:HB3	1.42	0.96
2:D:21:ASP:OD1	2:D:22:THR:N	1.99	0.95
2:D:8:LEU:HD11	2:D:70:VAL:HG22	1.48	0.95
2:D:41:GLN:HB2	2:D:69:LEU:HD11	1.51	0.93
2:D:23:ILE:HB	2:D:52:ASP:HA	1.49	0.92
2:D:21:ASP:OD1	2:D:25:ASN:HB2	1.70	0.92
1:A:822:THR:HG23	3:A:1201:NAI:H5N	1.51	0.90
1:A:393:ASP:OD2	1:A:396:SER:HB3	1.72	0.88
2:C:18:GLU:HB2	2:C:19:PRO:HD3	1.55	0.88
1:A:477:VAL:CG2	1:A:500:VAL:HG21	2.03	0.87
1:A:256:TYR:HB3	1:A:262:SER:HB3	1.57	0.87
1:A:1182:LEU:HD13	2:C:42:ARG:HD3	1.57	0.87
1:A:417:PRO:HD2	1:A:421:PHE:CE1	2.09	0.87
1:A:417:PRO:HD2	1:A:421:PHE:HE1	1.37	0.87
1:A:1115:LEU:HD23	1:A:1172:ILE:HD12	1.57	0.86
1:A:277:HIS:HB3	1:A:334:VAL:HG11	1.58	0.86
1:A:996:PHE:CD2	1:A:1021:LYS:HG3	2.11	0.85
1:A:936:ARG:O	1:A:937:ALA:HB3	1.75	0.84

*Continued on next page...*

*Continued from previous page...*

Atom-1	Atom-2	Interatomic distance (Å)	Clash overlap (Å)
1:A:674:SER:HB3	1:A:720:SER:HB3	1.60	0.84
1:A:745:THR:HB	1:A:746:PRO:HD3	1.58	0.83
1:A:789:THR:HG22	1:A:801:ALA:HB1	1.60	0.83
1:A:1105:ILE:HD12	1:A:1143:LEU:HD13	1.61	0.82
2:C:1:MET:CA	2:C:63:LYS:HG2	2.09	0.82
1:A:1032:ALA:CB	1:A:1055:ILE:CD1	2.58	0.81
2:C:18:GLU:CB	2:C:19:PRO:HD3	2.10	0.81
1:A:260:VAL:HG11	1:A:341:ALA:HB2	1.62	0.81
1:A:1051:ALA:O	1:A:1054:LYS:HB2	1.82	0.80
1:A:1032:ALA:HB3	1:A:1055:ILE:HD11	1.63	0.78
1:A:596:ARG:CG	1:A:1087:VAL:HG21	2.12	0.78
1:A:415:LYS:HB3	1:A:421:PHE:CE1	2.20	0.77
1:A:827:LEU:HD13	2:D:8:LEU:HD21	1.65	0.77
1:A:1032:ALA:HB3	1:A:1055:ILE:CD1	2.15	0.77
1:A:709:ILE:HD13	1:A:752:LEU:HD23	1.67	0.77
1:A:1007:PHE:CZ	1:A:1011:ARG:HD3	2.21	0.76
1:A:478:ILE:HD11	1:A:512:ARG:HE	1.48	0.76
2:C:43:LEU:O	2:C:49:GLN:HA	1.85	0.76
1:A:596:ARG:HG2	1:A:597:GLN:H	1.49	0.75
1:A:1182:LEU:HD22	2:C:42:ARG:NH1	2.01	0.75
1:A:500:VAL:C	1:A:501:PHE:O	2.04	0.75
2:C:23:ILE:HB	2:C:52:ASP:HA	1.68	0.75
1:A:925:ALA:HB2	1:A:1037:GLN:HE22	1.51	0.74
1:A:671:GLU:HG3	1:A:684:ILE:HD12	1.69	0.74
1:A:955:TYR:HB3	2:G:42:ARG:NH1	2.03	0.74
1:A:645:MET:SD	1:A:746:PRO:HG3	2.27	0.73
2:D:17:VAL:HG12	2:D:29:LYS:HD2	1.69	0.73
1:A:674:SER:CB	1:A:720:SER:HB3	2.19	0.73
1:A:237:ASP:OD2	1:A:324:LYS:NZ	2.20	0.73
1:A:986:THR:HB	1:A:988:THR:CG2	2.08	0.73
2:C:2:GLN:O	2:C:64:GLU:N	2.19	0.73
2:C:31:GLN:HB2	2:C:38:PRO:CG	2.19	0.73
1:A:290:GLU:HG2	1:A:327:MET:HE1	1.69	0.72
1:A:415:LYS:HD3	1:A:421:PHE:CE2	2.24	0.72
2:C:21:ASP:O	2:C:56:LEU:N	2.22	0.72
2:C:15:LEU:HD22	2:C:33:LYS:HG3	1.72	0.72
2:G:23:ILE:HB	2:G:52:ASP:HA	1.70	0.72
1:A:477:VAL:CG2	1:A:500:VAL:CG2	2.68	0.72
2:D:41:GLN:HB2	2:D:69:LEU:CD1	2.19	0.71
1:A:1159:PHE:O	1:A:1163:GLU:HG2	1.89	0.71
1:A:1032:ALA:CB	1:A:1055:ILE:HD11	2.19	0.71

*Continued on next page...*

*Continued from previous page...*

Atom-1	Atom-2	Interatomic distance (Å)	Clash overlap (Å)
1:A:596:ARG:NH2	1:A:602:GLU:OE1	2.22	0.71
2:D:4:PHE:CE2	2:D:14:THR:HG23	2.25	0.71
2:C:56:LEU:HB2	2:C:61:ILE:CD1	2.20	0.71
1:A:1189:SER:HB2	2:C:44:ILE:CG2	2.21	0.70
2:C:51:GLU:OE2	2:C:51:GLU:N	2.20	0.70
1:A:723:ASN:ND2	3:A:1201:NAI:O2A	2.24	0.70
2:C:43:LEU:HB3	2:C:50:LEU:HD12	1.74	0.70
1:A:955:TYR:HB3	2:G:42:ARG:HH11	1.56	0.70
2:C:31:GLN:HB2	2:C:38:PRO:HG2	1.73	0.70
1:A:1112:ILE:HG12	1:A:1136:LEU:HD13	1.72	0.69
2:D:39:ASP:O	2:D:42:ARG:NH2	2.25	0.69
1:A:644:GLU:HG2	1:A:647:VAL:CG2	2.21	0.69
2:G:1:MET:CB	2:G:63:LYS:HG2	2.17	0.69
2:D:5:VAL:HG21	2:D:30:ILE:HD11	1.74	0.69
1:A:644:GLU:HG2	1:A:647:VAL:HG23	1.72	0.69
1:A:595:ARG:HD2	1:A:644:GLU:OE2	1.93	0.69
1:A:613:LEU:HD23	1:A:663:LEU:HD22	1.73	0.69
1:A:936:ARG:O	1:A:937:ALA:CB	2.39	0.68
2:C:43:LEU:HA	2:C:69:LEU:CD2	2.22	0.68
1:A:1008:GLU:O	1:A:1011:ARG:NH2	2.26	0.68
1:A:495:GLU:HG3	1:A:496:GLY:H	1.56	0.68
1:A:722:VAL:HG13	1:A:741:THR:HG23	1.75	0.68
2:C:44:ILE:HB	2:C:68:HIS:O	1.93	0.68
1:A:859:THR:HG23	1:A:861:SER:H	1.59	0.68
1:A:714:ASN:OD1	1:A:715:ASP:CG	2.32	0.67
1:A:583:ILE:HD13	1:A:874:VAL:CG1	2.24	0.67
2:G:17:VAL:HG12	2:G:29:LYS:HE3	1.75	0.67
1:A:664:MET:HG3	1:A:688:TRP:CG	2.30	0.67
1:A:1061:MET:CE	1:A:1064:ILE:CD1	2.67	0.67
2:C:43:LEU:HA	2:C:69:LEU:HD22	1.76	0.67
1:A:1008:GLU:O	1:A:1011:ARG:HG2	1.95	0.66
1:A:478:ILE:HD11	1:A:512:ARG:NE	2.10	0.66
1:A:481:ASP:O	1:A:483:GLN:N	2.29	0.66
1:A:1097:VAL:HG12	1:A:1150:MET:HE3	1.76	0.66
1:A:612:ILE:CD1	1:A:626:ILE:HD11	2.26	0.66
1:A:822:THR:CG2	1:A:827:LEU:HD23	2.24	0.66
1:A:1045:ILE:CD1	1:A:1081:SER:HB3	2.25	0.66
2:D:1:MET:SD	2:D:19:PRO:CG	2.80	0.66
1:A:400:HIS:O	1:A:404:ASN:ND2	2.29	0.66
1:A:655:THR:O	1:A:659:ASN:ND2	2.29	0.65
1:A:946:LEU:HG	1:A:974:LEU:HD21	1.79	0.65

*Continued on next page...*

*Continued from previous page...*

Atom-1	Atom-2	Interatomic distance (Å)	Clash overlap (Å)
1:A:710:PHE:CD1	2:D:74:ARG:HA	2.31	0.65
2:D:15:LEU:HD11	2:D:30:ILE:HG12	1.78	0.65
1:A:667:GLU:O	1:A:685:GLY:HA3	1.97	0.65
1:A:382:PHE:O	1:A:386:VAL:HG23	1.97	0.65
1:A:943:ILE:HD13	1:A:1020:ILE:CD1	2.28	0.64
1:A:928:LYS:NZ	1:A:1034:THR:HG23	2.12	0.64
1:A:1060:GLU:H	1:A:1060:GLU:CD	1.97	0.64
1:A:461:SER:HB2	1:A:534:LYS:O	1.97	0.64
2:C:38:PRO:HB3	2:C:41:GLN:OE1	1.98	0.64
1:A:943:ILE:HD11	1:A:1020:ILE:HG23	1.80	0.64
1:A:476:TYR:CD2	1:A:514:MET:HE1	2.32	0.63
1:A:1148:ILE:HD11	1:A:1159:PHE:HZ	1.63	0.63
1:A:264:PRO:HB2	1:A:271:MET:CE	2.28	0.63
2:C:60:ASN:O	2:C:62:GLN:NE2	2.31	0.63
1:A:972:PRO:O	1:A:975:GLU:HB3	1.98	0.63
2:D:23:ILE:HG12	2:D:54:ARG:O	1.98	0.63
1:A:477:VAL:HG23	1:A:500:VAL:CG2	2.28	0.63
2:D:17:VAL:HG12	2:D:29:LYS:CD	2.29	0.63
1:A:943:ILE:HD13	1:A:1020:ILE:HD13	1.80	0.63
1:A:661:ASP:O	1:A:665:ARG:HG3	1.98	0.62
1:A:725:ILE:HA	1:A:730:ASP:OD1	1.99	0.62
1:A:781:GLN:HB3	1:A:808:ASN:HB3	1.80	0.62
1:A:956:SER:HA	2:G:70:VAL:HG11	1.80	0.62
2:C:56:LEU:HB2	2:C:61:ILE:HD11	1.82	0.62
1:A:477:VAL:HG23	1:A:500:VAL:HG22	1.80	0.62
1:A:1007:PHE:CE1	1:A:1011:ARG:HD3	2.35	0.62
1:A:583:ILE:HD13	1:A:874:VAL:HG11	1.80	0.62
1:A:275:GLN:HG3	1:A:276:HIS:ND1	2.15	0.62
1:A:339:ASP:HB2	1:A:350:TYR:OH	1.99	0.61
1:A:980:GLY:HA3	1:A:989:LEU:HD13	1.82	0.61
1:A:503:GLN:HG2	1:A:504:THR:N	2.14	0.61
1:A:386:VAL:HG22	1:A:400:HIS:NE2	2.16	0.61
2:C:8:LEU:HD12	2:C:8:LEU:H	1.64	0.61
1:A:967:LYS:HD3	1:A:967:LYS:O	1.99	0.61
1:A:397:THR:HB	1:A:398:PRO:HD2	1.83	0.61
1:A:1032:ALA:HB1	1:A:1055:ILE:CD1	2.31	0.61
1:A:416:GLN:O	1:A:418:PRO:HD3	1.99	0.61
1:A:832:TRP:CD1	2:D:44:ILE:HD12	2.35	0.60
1:A:358:PHE:O	1:A:362:VAL:HG23	2.01	0.60
1:A:949:GLU:O	1:A:953:VAL:HG13	2.00	0.60
1:A:608:ILE:O	1:A:612:ILE:HG12	2.02	0.60

*Continued on next page...*

*Continued from previous page...*

Atom-1	Atom-2	Interatomic distance (Å)	Clash overlap (Å)
2:D:3:ILE:HD13	2:D:17:VAL:HG21	1.84	0.60
1:A:596:ARG:NH1	1:A:869:GLU:OE2	2.34	0.60
2:C:36:ILE:HD12	2:C:36:ILE:H	1.67	0.60
1:A:290:GLU:HG2	1:A:327:MET:CE	2.31	0.59
1:A:463:ASN:OD1	1:A:465:GLU:HG2	2.01	0.59
2:D:4:PHE:O	2:D:67:LEU:N	2.33	0.59
2:D:41:GLN:CB	2:D:69:LEU:HD11	2.30	0.59
1:A:775:THR:O	1:A:779:ILE:HG13	2.02	0.59
1:A:1093:ASP:HB3	1:A:1096:LYS:HB3	1.84	0.59
2:D:8:LEU:HD12	2:D:8:LEU:H	1.68	0.59
1:A:500:VAL:O	1:A:501:PHE:O	2.20	0.59
1:A:822:THR:HG21	1:A:827:LEU:CD2	2.27	0.59
2:C:6:LYS:O	2:C:68:HIS:HA	2.03	0.59
2:C:7:THR:HG22	2:C:69:LEU:O	2.02	0.59
2:C:1:MET:HA	2:C:63:LYS:CG	2.20	0.59
1:A:478:ILE:HG22	1:A:484:PRO:N	2.18	0.58
1:A:557:ARG:NH2	1:A:561:GLU:OE2	2.37	0.58
1:A:633:GLN:OE1	1:A:637:ARG:NH1	2.36	0.58
1:A:740:ILE:O	1:A:744:MET:HG2	2.03	0.58
2:C:6:LYS:N	2:C:67:LEU:O	2.26	0.58
1:A:618:CYS:HB2	1:A:625:LEU:O	2.04	0.58
1:A:682:VAL:HB	1:A:717:TRP:CE3	2.38	0.58
1:A:612:ILE:HD12	1:A:624:VAL:HG11	1.85	0.58
1:A:501:PHE:HD1	1:A:502:PRO:HD3	1.69	0.58
1:A:241:LYS:HD3	1:A:568:LEU:HD12	1.84	0.58
1:A:302:ARG:NH1	1:A:787:ALA:O	2.36	0.58
1:A:1056:PRO:HG2	1:A:1061:MET:HG3	1.84	0.58
1:A:282:THR:O	1:A:286:MET:HG3	2.04	0.58
1:A:954:GLN:NE2	1:A:963:LYS:HB3	2.19	0.58
1:A:822:THR:CG2	3:A:1201:NAI:H5N	2.31	0.58
1:A:349:LYS:O	1:A:352:GLU:HB2	2.03	0.58
1:A:714:ASN:HB3	2:D:72:ARG:HD3	1.85	0.58
1:A:415:LYS:HD3	1:A:421:PHE:CZ	2.38	0.58
1:A:519:PHE:O	1:A:522:LEU:HB2	2.03	0.57
1:A:849:SER:HB3	1:A:865:VAL:HG22	1.86	0.57
2:C:23:ILE:O	2:C:27:LYS:HG3	2.04	0.57
1:A:256:TYR:CB	1:A:262:SER:HB3	2.34	0.57
1:A:1181:LEU:HA	1:A:1184:VAL:HG22	1.85	0.57
2:C:15:LEU:HD22	2:C:33:LYS:HE3	1.86	0.57
1:A:256:TYR:HB3	1:A:262:SER:CB	2.32	0.57
1:A:798:SER:HB2	1:A:799:PRO:HD3	1.87	0.57

*Continued on next page...*

*Continued from previous page...*

Atom-1	Atom-2	Interatomic distance (Å)	Clash overlap (Å)
1:A:822:THR:HG23	3:A:1201:NAI:C5N	2.29	0.57
1:A:419:GLU:HA	1:A:459:PHE:CE1	2.39	0.57
2:D:21:ASP:OD2	2:D:25:ASN:HB3	2.05	0.57
2:C:28:ALA:O	2:C:31:GLN:HB3	2.05	0.57
1:A:372:ASP:OD1	1:A:372:ASP:N	2.38	0.57
2:C:56:LEU:HD22	2:C:61:ILE:HD11	1.86	0.57
1:A:1133:LEU:HD11	1:A:1169:ILE:HG23	1.87	0.57
1:A:291:LEU:HD11	1:A:444:ILE:HD12	1.87	0.57
1:A:476:TYR:HD2	1:A:514:MET:HE1	1.70	0.57
1:A:241:LYS:NZ	1:A:565:ASP:OD2	2.28	0.57
1:A:645:MET:HB2	1:A:866:TYR:CZ	2.40	0.57
1:A:498:LEU:O	1:A:500:VAL:N	2.37	0.56
1:A:1120:LEU:HD13	1:A:1126:VAL:HG22	1.87	0.56
1:A:1075:ALA:O	1:A:1079:LEU:HG	2.05	0.56
2:C:5:VAL:HG12	2:C:67:LEU:HB2	1.88	0.56
1:A:366:GLU:HG2	1:A:370:ILE:HB	1.87	0.56
1:A:612:ILE:HD11	1:A:626:ILE:HD11	1.85	0.56
2:C:14:THR:O	2:C:15:LEU:HD23	2.05	0.56
1:A:1055:ILE:HG12	1:A:1071:GLN:OE1	2.05	0.56
1:A:437:ALA:O	1:A:441:VAL:HG23	2.05	0.56
2:C:58:ASP:O	2:C:59:TYR:HB2	2.06	0.56
1:A:429:MET:O	1:A:433:ILE:HG22	2.06	0.56
1:A:569:LYS:O	1:A:573:THR:HG23	2.06	0.56
3:A:1201:NAI:C5B	3:A:1201:NAI:PN	2.94	0.56
2:C:18:GLU:CB	2:C:19:PRO:CD	2.83	0.56
1:A:596:ARG:HD2	1:A:1087:VAL:HG21	1.89	0.56
2:C:56:LEU:HD12	2:C:57:SER:N	2.21	0.56
2:C:45:PHE:HB2	2:C:67:LEU:HD22	1.87	0.56
2:C:8:LEU:N	2:C:8:LEU:HD12	2.20	0.55
2:D:6:LYS:HG3	2:D:12:THR:HG22	1.88	0.55
1:A:1107:ASN:OD1	1:A:1111:LYS:HE3	2.06	0.55
1:A:285:THR:HA	1:A:288:TYR:CD2	2.41	0.55
1:A:1036:CYS:SG	1:A:1052:LEU:HD21	2.47	0.55
1:A:383:TYR:O	1:A:387:ILE:HG13	2.06	0.55
1:A:785:MET:HE1	1:A:809:ASP:HA	1.88	0.55
1:A:974:LEU:HD11	1:A:1017:MET:SD	2.46	0.55
2:D:41:GLN:C	2:D:42:ARG:HD2	2.26	0.55
1:A:1032:ALA:CB	1:A:1055:ILE:HD12	2.37	0.55
1:A:465:GLU:O	1:A:516:VAL:HG23	2.07	0.55
1:A:674:SER:HB3	1:A:720:SER:CB	2.36	0.55
1:A:883:LYS:HD3	1:A:887:GLY:O	2.05	0.55

*Continued on next page...*

*Continued from previous page...*

Atom-1	Atom-2	Interatomic distance (Å)	Clash overlap (Å)
1:A:1012:GLN:HG2	2:G:10:GLY:CA	2.37	0.55
1:A:1056:PRO:HB2	1:A:1061:MET:HB2	1.89	0.55
1:A:1133:LEU:HD13	1:A:1172:ILE:HG13	1.88	0.55
1:A:506:LYS:CB	1:A:510:ASN:CB	2.85	0.55
1:A:967:LYS:HD3	1:A:967:LYS:C	2.27	0.55
1:A:1119:LYS:C	1:A:1121:PRO:HD3	2.27	0.54
1:A:478:ILE:HG22	1:A:484:PRO:CA	2.37	0.54
2:G:19:PRO:O	2:G:20:SER:OG	2.18	0.54
1:A:1084:ARG:HD2	1:A:1084:ARG:O	2.07	0.54
1:A:716:ALA:HA	1:A:719:PHE:CE2	2.43	0.54
2:C:56:LEU:HB2	2:C:61:ILE:HD13	1.88	0.54
2:G:14:THR:C	2:G:15:LEU:HD12	2.27	0.54
1:A:322:GLU:O	1:A:326:ILE:HG13	2.07	0.54
2:D:56:LEU:HD22	2:D:61:ILE:HG13	1.89	0.54
1:A:691:ASP:OD1	1:A:695:ASN:ND2	2.41	0.54
1:A:1123:LEU:HD13	1:A:1183:GLU:HB2	1.89	0.54
1:A:386:VAL:HG22	1:A:400:HIS:CE1	2.43	0.54
1:A:847:LEU:HD12	1:A:867:LEU:HD12	1.90	0.54
1:A:946:LEU:O	1:A:950:VAL:HG23	2.08	0.54
2:G:17:VAL:HG12	2:G:29:LYS:CE	2.38	0.54
1:A:832:TRP:HZ3	3:A:1201:NAI:H42N	1.73	0.54
1:A:706:HIS:HD2	2:D:75:GLY:HA3	1.72	0.54
1:A:373:VAL:HG12	1:A:374:PHE:CD1	2.42	0.54
1:A:664:MET:HG3	1:A:688:TRP:CD1	2.43	0.54
1:A:714:ASN:OD1	1:A:715:ASP:OD2	2.26	0.54
2:C:41:GLN:HA	2:C:71:LEU:CD2	2.38	0.54
1:A:914:GLU:HB2	1:A:915:PRO:HD3	1.91	0.53
2:C:43:LEU:HB2	2:C:50:LEU:HB2	1.89	0.53
1:A:596:ARG:CD	1:A:1087:VAL:HG21	2.37	0.53
1:A:612:ILE:HD13	1:A:626:ILE:HD11	1.90	0.53
1:A:827:LEU:HD12	1:A:831:THR:OG1	2.09	0.53
2:C:4:PHE:HE1	2:C:14:THR:HG22	1.72	0.53
1:A:596:ARG:HG2	1:A:1087:VAL:HG21	1.90	0.53
1:A:234:LEU:HD23	1:A:234:LEU:C	2.29	0.53
1:A:499:LYS:HG2	1:A:499:LYS:O	2.06	0.53
1:A:334:VAL:CG1	1:A:337:ARG:HG3	2.38	0.53
1:A:676:ASN:N	1:A:677:PRO:HD3	2.23	0.53
1:A:517:ASP:OD1	1:A:518:GLU:N	2.41	0.53
1:A:749:SER:O	1:A:753:VAL:HG23	2.08	0.53
1:A:801:ALA:O	1:A:805:ILE:HG13	2.08	0.53
2:D:5:VAL:O	2:D:13:ILE:HG12	2.08	0.53

*Continued on next page...*

*Continued from previous page...*

Atom-1	Atom-2	Interatomic distance (Å)	Clash overlap (Å)
1:A:537:GLN:OE1	1:A:541:PRO:HB3	2.09	0.53
1:A:606:ALA:HB2	1:A:648:VAL:HG13	1.91	0.53
1:A:284:ARG:NH2	1:A:454:GLU:HG3	2.24	0.53
1:A:1164:LYS:O	1:A:1168:GLN:HG3	2.08	0.52
1:A:832:TRP:HH2	3:A:1201:NAI:C6N	2.22	0.52
1:A:250:ASN:HB2	1:A:251:TYR:CD1	2.43	0.52
1:A:326:ILE:HD13	1:A:402:LEU:HD12	1.90	0.52
1:A:1189:SER:HB2	2:C:44:ILE:HG21	1.91	0.52
2:C:56:LEU:HD12	2:C:56:LEU:C	2.30	0.52
1:A:1140:VAL:O	1:A:1143:LEU:HB2	2.08	0.52
1:A:596:ARG:HG2	1:A:597:GLN:N	2.21	0.52
1:A:277:HIS:HB3	1:A:334:VAL:CG1	2.36	0.52
1:A:323:LEU:O	1:A:327:MET:HG3	2.09	0.52
1:A:334:VAL:O	1:A:334:VAL:HG12	2.09	0.52
1:A:846:LEU:N	1:A:846:LEU:CD1	2.72	0.52
2:C:25:ASN:O	2:C:29:LYS:HG2	2.09	0.52
2:D:8:LEU:N	2:D:8:LEU:HD12	2.25	0.52
2:G:66:THR:O	2:G:67:LEU:HD23	2.10	0.52
1:A:928:LYS:CE	1:A:1034:THR:HG23	2.39	0.52
2:G:28:ALA:O	2:G:31:GLN:HB3	2.10	0.52
2:G:56:LEU:HD22	2:G:61:ILE:HD12	1.91	0.52
1:A:1061:MET:HE3	1:A:1061:MET:O	2.10	0.51
1:A:376:ASP:OD2	1:A:378:GLU:HB3	2.10	0.51
1:A:1009:GLU:HG2	2:G:8:LEU:HB2	1.92	0.51
1:A:925:ALA:HB2	1:A:1037:GLN:NE2	2.24	0.51
1:A:946:LEU:HD23	1:A:1020:ILE:HD12	1.92	0.51
2:C:1:MET:CB	2:C:63:LYS:HG2	2.40	0.51
1:A:714:ASN:HB3	2:D:72:ARG:CD	2.40	0.51
1:A:620:HIS:O	1:A:736:LYS:NZ	2.41	0.51
1:A:639:LEU:O	1:A:643:CYS:HB2	2.11	0.51
2:G:23:ILE:HG13	2:G:50:LEU:HB3	1.93	0.51
1:A:673:HIS:HB3	1:A:675:THR:O	2.10	0.51
2:D:37:PRO:HB2	2:D:39:ASP:OD1	2.11	0.51
2:C:19:PRO:O	2:C:20:SER:OG	2.26	0.51
1:A:371:PRO:HB2	1:A:372:ASP:OD1	2.11	0.51
1:A:954:GLN:HE21	1:A:963:LYS:HB3	1.76	0.51
1:A:1189:SER:CB	2:C:44:ILE:CG2	2.89	0.51
1:A:1084:ARG:HD2	1:A:1084:ARG:C	2.31	0.50
1:A:629:GLN:HG3	1:A:919:MET:HG3	1.93	0.50
1:A:706:HIS:CD2	2:D:75:GLY:HA3	2.46	0.50
1:A:1045:ILE:HD11	1:A:1081:SER:HB3	1.91	0.50

*Continued on next page...*



*Continued from previous page...*

Atom-1	Atom-2	Interatomic distance (Å)	Clash overlap (Å)
1:A:543:MET:SD	1:A:548:TYR:HA	2.51	0.50
2:C:8:LEU:CD1	2:C:8:LEU:H	2.24	0.50
1:A:588:GLN:HG3	1:A:901:PRO:HG2	1.93	0.50
2:D:39:ASP:OD1	2:D:40:GLN:HG3	2.12	0.50
1:A:295:GLU:OE2	1:A:298:LYS:NZ	2.45	0.50
1:A:1119:LYS:O	1:A:1121:PRO:HD3	2.12	0.50
2:D:56:LEU:HB3	2:D:61:ILE:HB	1.94	0.50
1:A:1036:CYS:O	1:A:1039:ALA:HB3	2.12	0.50
1:A:714:ASN:O	1:A:715:ASP:C	2.48	0.50
1:A:1029:VAL:HG22	1:A:1056:PRO:HD2	1.92	0.50
1:A:1179:ALA:O	1:A:1183:GLU:HG2	2.12	0.50
1:A:832:TRP:NE1	2:D:44:ILE:HD12	2.27	0.50
1:A:256:TYR:CZ	1:A:274:ARG:HD3	2.47	0.50
1:A:653:ASN:OD1	1:A:655:THR:HB	2.12	0.50
1:A:877:LYS:HE3	1:A:879:THR:OG1	2.12	0.50
1:A:714:ASN:OD1	1:A:715:ASP:N	2.45	0.49
2:C:41:GLN:HA	2:C:71:LEU:HD23	1.93	0.49
2:D:18:GLU:O	2:D:20:SER:O	2.29	0.49
1:A:323:LEU:HG	1:A:327:MET:HE2	1.94	0.49
1:A:487:GLU:O	1:A:489:PRO:HD3	2.12	0.49
1:A:846:LEU:O	1:A:847:LEU:HB3	2.12	0.49
2:C:22:THR:O	2:C:26:VAL:HG23	2.11	0.49
1:A:1122:ASN:OD1	1:A:1122:ASN:N	2.44	0.49
1:A:474:GLY:O	1:A:475:ARG:HD3	2.13	0.49
1:A:489:PRO:HD2	1:A:495:GLU:CG	2.42	0.49
1:A:745:THR:CB	1:A:746:PRO:HD3	2.37	0.49
1:A:802:PHE:O	1:A:806:LYS:HG2	2.12	0.49
2:C:1:MET:H2	2:C:18:GLU:HG2	1.77	0.49
2:C:21:ASP:CB	2:C:56:LEU:HD23	2.16	0.49
1:A:855:HIS:CA	1:A:859:THR:HG21	2.31	0.49
1:A:928:LYS:HE2	1:A:1034:THR:CG2	2.43	0.49
1:A:376:ASP:OD1	1:A:376:ASP:N	2.45	0.49
1:A:640:LEU:HA	1:A:645:MET:HE2	1.95	0.49
1:A:928:LYS:HE2	1:A:1034:THR:HG23	1.93	0.49
1:A:613:LEU:HD11	1:A:747:LEU:HD11	1.94	0.49
2:C:55:THR:O	2:C:58:ASP:HB2	2.12	0.49
1:A:292:ILE:HG23	1:A:433:ILE:HD12	1.94	0.49
1:A:260:VAL:CG1	1:A:341:ALA:HB2	2.39	0.48
1:A:657:ILE:HD13	1:A:747:LEU:HD22	1.94	0.48
1:A:1011:ARG:HG3	1:A:1012:GLN:N	2.28	0.48
1:A:410:ASP:OD2	1:A:413:ARG:NH1	2.46	0.48

*Continued on next page...*

*Continued from previous page...*

Atom-1	Atom-2	Interatomic distance (Å)	Clash overlap (Å)
1:A:419:GLU:HA	1:A:459:PHE:HE1	1.77	0.48
1:A:1073:GLN:O	1:A:1077:GLN:HG2	2.13	0.48
1:A:846:LEU:HD12	1:A:846:LEU:N	2.27	0.48
1:A:478:ILE:HG12	1:A:512:ARG:O	2.13	0.48
1:A:256:TYR:CE1	1:A:274:ARG:HD3	2.48	0.48
1:A:234:LEU:HD11	1:A:286:MET:HB2	1.95	0.48
1:A:1185:THR:OG1	2:C:8:LEU:HD11	2.14	0.48
1:A:664:MET:HG3	1:A:688:TRP:CB	2.44	0.48
1:A:832:TRP:CH2	3:A:1201:NAI:C6N	2.97	0.48
1:A:1112:ILE:CG1	1:A:1136:LEU:HD13	2.43	0.48
1:A:708:LEU:HD13	1:A:744:MET:HE1	1.96	0.48
1:A:623:HIS:HA	1:A:735:PHE:CZ	2.49	0.48
1:A:811:SER:OG	1:A:873:LEU:N	2.44	0.48
1:A:709:ILE:HG22	1:A:852:VAL:HG13	1.96	0.48
1:A:612:ILE:CD1	1:A:624:VAL:HG11	2.43	0.47
1:A:1187:GLN:O	1:A:1191:LEU:HG	2.15	0.47
1:A:898:VAL:HG12	1:A:903:PHE:HE2	1.77	0.47
1:A:921:ALA:O	1:A:1037:GLN:NE2	2.47	0.47
1:A:1045:ILE:HD11	1:A:1081:SER:CB	2.44	0.47
1:A:596:ARG:HG3	1:A:1087:VAL:HG21	1.96	0.47
2:G:17:VAL:HG12	2:G:29:LYS:CD	2.44	0.47
2:C:18:GLU:HB2	2:C:19:PRO:CD	2.35	0.47
1:A:943:ILE:HD13	1:A:1020:ILE:HG12	1.97	0.47
1:A:461:SER:HB3	1:A:535:HIS:CE1	2.48	0.47
2:G:23:ILE:O	2:G:27:LYS:HG3	2.14	0.47
1:A:1168:GLN:O	1:A:1172:ILE:HG12	2.15	0.47
1:A:743:LEU:O	1:A:746:PRO:HD2	2.14	0.47
1:A:822:THR:HG22	1:A:860:GLU:O	2.15	0.47
2:D:21:ASP:OD1	2:D:25:ASN:CB	2.54	0.47
1:A:1180:TYR:O	1:A:1184:VAL:HG13	2.14	0.47
1:A:709:ILE:CG2	1:A:852:VAL:HG13	2.45	0.47
1:A:766:ARG:HB2	1:A:821:THR:HG22	1.97	0.47
1:A:986:THR:HG22	1:A:987:ASP:N	2.29	0.47
1:A:1026:ASN:O	1:A:1030:LEU:HD13	2.16	0.46
1:A:770:LEU:O	1:A:835:ASN:ND2	2.48	0.46
2:C:4:PHE:CE1	2:C:14:THR:HG22	2.50	0.46
2:D:73:LEU:HD12	2:D:74:ARG:H	1.80	0.46
1:A:590:SER:OG	1:A:591:LYS:N	2.45	0.46
2:D:1:MET:HB3	2:D:19:PRO:HD3	1.97	0.46
1:A:416:GLN:C	1:A:418:PRO:HD3	2.34	0.46
1:A:441:VAL:O	1:A:445:GLN:HB2	2.15	0.46

*Continued on next page...*

*Continued from previous page...*

Atom-1	Atom-2	Interatomic distance (Å)	Clash overlap (Å)
2:C:43:LEU:O	2:C:44:ILE:HD12	2.15	0.46
2:D:1:MET:SD	2:D:19:PRO:HD3	2.56	0.46
2:G:17:VAL:CG1	2:G:29:LYS:HD3	2.46	0.46
1:A:943:ILE:HD13	1:A:1020:ILE:CG1	2.46	0.46
2:C:44:ILE:H	2:C:69:LEU:HD23	1.80	0.46
2:D:8:LEU:CD1	2:D:8:LEU:H	2.28	0.46
1:A:334:VAL:HG13	1:A:337:ARG:HG3	1.97	0.46
1:A:478:ILE:HG22	1:A:484:PRO:HA	1.97	0.46
1:A:965:PHE:O	1:A:969:THR:HB	2.16	0.46
1:A:813:MET:HE1	1:A:838:PHE:HZ	1.80	0.46
1:A:870:ASP:HB3	1:A:904:THR:CG2	2.46	0.46
2:G:43:LEU:HB3	2:G:50:LEU:HD12	1.98	0.46
1:A:859:THR:HG23	1:A:861:SER:N	2.30	0.46
1:A:870:ASP:HB3	1:A:904:THR:HG22	1.98	0.46
1:A:980:GLY:CA	1:A:989:LEU:HD13	2.46	0.46
1:A:971:GLY:N	1:A:972:PRO:HD2	2.30	0.46
1:A:1182:LEU:CD1	2:C:42:ARG:HD3	2.38	0.46
1:A:481:ASP:N	1:A:481:ASP:OD1	2.50	0.45
1:A:966:LEU:HA	1:A:970:VAL:HB	1.96	0.45
2:C:37:PRO:HA	2:C:38:PRO:HD3	1.67	0.45
1:A:752:LEU:HD13	1:A:864:SER:HB3	1.98	0.45
1:A:847:LEU:CD1	1:A:867:LEU:CD1	2.95	0.45
1:A:931:ILE:HG22	1:A:1030:LEU:HD11	1.97	0.45
2:D:3:ILE:CD1	2:D:17:VAL:HG21	2.45	0.45
1:A:709:ILE:CD1	1:A:752:LEU:HD23	2.43	0.45
2:C:30:ILE:HG21	2:C:41:GLN:HE22	1.82	0.45
1:A:962:TYR:HA	1:A:1005:PHE:CE1	2.52	0.45
1:A:1032:ALA:HB3	1:A:1055:ILE:HD12	1.95	0.45
1:A:856:GLY:H	1:A:859:THR:CG2	2.29	0.45
1:A:950:VAL:O	1:A:953:VAL:HG22	2.16	0.45
2:D:1:MET:HB3	2:D:17:VAL:O	2.16	0.45
1:A:827:LEU:HD13	2:D:8:LEU:CD2	2.40	0.45
1:A:846:LEU:H	1:A:846:LEU:CD1	2.30	0.45
1:A:844:ASP:HB2	1:A:846:LEU:HD13	1.98	0.45
1:A:293:VAL:O	1:A:297:ARG:HG3	2.17	0.45
1:A:416:GLN:HA	1:A:416:GLN:OE1	2.17	0.45
1:A:487:GLU:N	1:A:487:GLU:OE1	2.50	0.45
1:A:980:GLY:HA3	1:A:989:LEU:CD1	2.45	0.45
1:A:705:LYS:O	1:A:709:ILE:HG13	2.17	0.44
2:D:21:ASP:CG	2:D:25:ASN:HB2	2.36	0.44
1:A:665:ARG:HG3	1:A:689:ILE:HD11	1.99	0.44

*Continued on next page...*

*Continued from previous page...*

Atom-1	Atom-2	Interatomic distance (Å)	Clash overlap (Å)
2:D:21:ASP:OD2	2:D:25:ASN:CB	2.65	0.44
2:C:52:ASP:N	2:C:52:ASP:OD1	2.51	0.44
2:C:6:LYS:HG2	2:C:7:THR:H	1.82	0.44
2:D:18:GLU:OE2	2:D:20:SER:OG	2.30	0.44
1:A:344:ALA:O	1:A:348:GLN:HG2	2.17	0.44
1:A:985:ASP:O	1:A:986:THR:OG1	2.32	0.44
2:D:42:ARG:N	2:D:42:ARG:HD2	2.32	0.44
1:A:260:VAL:N	1:A:339:ASP:OD1	2.51	0.44
2:C:22:THR:HG22	2:C:55:THR:HA	1.98	0.44
2:C:43:LEU:CB	2:C:50:LEU:HB2	2.47	0.44
1:A:1136:LEU:O	1:A:1140:VAL:HG23	2.18	0.44
1:A:290:GLU:CG	1:A:327:MET:HE1	2.42	0.44
1:A:522:LEU:HG	1:A:523:PRO:HD2	2.00	0.44
1:A:264:PRO:HB2	1:A:271:MET:HE2	2.00	0.44
1:A:278:GLY:O	1:A:282:THR:HG23	2.17	0.44
1:A:1022:GLN:HB2	1:A:1063:THR:HG21	1.99	0.44
1:A:352:GLU:O	1:A:355:ARG:HG3	2.17	0.44
1:A:946:LEU:CG	1:A:974:LEU:HD21	2.46	0.44
2:G:19:PRO:O	2:G:20:SER:CB	2.66	0.44
2:G:63:LYS:O	2:G:64:GLU:HB2	2.18	0.44
1:A:264:PRO:HB2	1:A:271:MET:HE1	2.00	0.43
2:G:37:PRO:HA	2:G:38:PRO:HD3	1.91	0.43
1:A:554:SER:O	1:A:557:ARG:HB3	2.18	0.43
2:D:5:VAL:HG11	2:D:30:ILE:CD1	2.48	0.43
1:A:348:GLN:O	1:A:352:GLU:HG3	2.18	0.43
1:A:405:GLN:O	1:A:409:VAL:HG13	2.18	0.43
1:A:786:ILE:HD11	1:A:878:VAL:HG23	2.01	0.43
1:A:719:PHE:CD1	1:A:719:PHE:C	2.92	0.43
2:C:23:ILE:HD12	2:C:43:LEU:HG	2.01	0.43
2:C:6:LYS:HG2	2:C:7:THR:N	2.34	0.43
1:A:1122:ASN:ND2	1:A:1124:ASP:HB2	2.33	0.43
1:A:237:ASP:OD2	1:A:240:VAL:HG23	2.18	0.43
1:A:477:VAL:O	1:A:484:PRO:HA	2.17	0.43
1:A:688:TRP:O	1:A:691:ASP:HB3	2.19	0.43
1:A:665:ARG:CG	1:A:689:ILE:HD11	2.49	0.43
1:A:985:ASP:OD2	1:A:986:THR:N	2.51	0.43
2:C:18:GLU:HB3	2:C:19:PRO:HD3	1.97	0.43
2:C:44:ILE:H	2:C:69:LEU:CD2	2.32	0.43
1:A:943:ILE:CD1	1:A:1020:ILE:HG23	2.46	0.43
1:A:478:ILE:HG22	1:A:483:GLN:C	2.38	0.43
1:A:736:LYS:O	1:A:740:ILE:HG13	2.19	0.43

*Continued on next page...*

*Continued from previous page...*

Atom-1	Atom-2	Interatomic distance (Å)	Clash overlap (Å)
1:A:466:PRO:HB2	1:A:475:ARG:HH22	1.84	0.43
1:A:613:LEU:O	1:A:659:ASN:HB3	2.19	0.43
1:A:804:GLN:O	1:A:808:ASN:ND2	2.49	0.43
1:A:956:SER:HA	2:G:70:VAL:CG1	2.48	0.43
1:A:674:SER:O	1:A:675:THR:OG1	2.26	0.42
1:A:672:PHE:CE1	1:A:681:PRO:HB3	2.53	0.42
2:C:27:LYS:HA	2:C:41:GLN:OE1	2.19	0.42
2:D:20:SER:O	2:D:21:ASP:HB3	2.18	0.42
2:D:63:LYS:O	2:D:64:GLU:HB2	2.19	0.42
1:A:1044:ASN:ND2	1:A:1047:GLY:HA3	2.34	0.42
1:A:607:ARG:O	1:A:611:GLN:HG3	2.19	0.42
1:A:613:LEU:CD2	1:A:663:LEU:HD22	2.46	0.42
2:G:66:THR:C	2:G:67:LEU:HD23	2.40	0.42
1:A:487:GLU:O	1:A:495:GLU:HB3	2.19	0.42
1:A:827:LEU:O	1:A:831:THR:OG1	2.37	0.42
1:A:833:ASP:CG	1:A:885:GLN:H	2.21	0.42
1:A:548:TYR:CE2	1:A:552:LEU:HD11	2.55	0.42
1:A:600:VAL:CG1	1:A:913:VAL:HG21	2.50	0.42
1:A:1133:LEU:O	1:A:1137:LYS:HG3	2.19	0.42
1:A:718:TYR:O	1:A:722:VAL:HG23	2.20	0.42
1:A:723:ASN:HD22	3:A:1201:NAI:PA	2.39	0.42
1:A:786:ILE:CD1	1:A:878:VAL:HG23	2.49	0.42
1:A:311:ASP:N	1:A:311:ASP:OD1	2.40	0.41
1:A:880:LEU:HD11	1:A:889:ASN:HB3	2.02	0.41
1:A:988:THR:HG23	1:A:989:LEU:N	2.34	0.41
1:A:529:PHE:HA	1:A:530:PRO:HD3	1.81	0.41
1:A:796:ASP:OD2	1:A:799:PRO:HD3	2.19	0.41
1:A:856:GLY:H	1:A:859:THR:HG22	1.85	0.41
1:A:841:LEU:HB2	1:A:896:VAL:HG22	2.02	0.41
1:A:959:SER:O	1:A:963:LYS:HG3	2.21	0.41
2:G:1:MET:HG2	2:G:17:VAL:O	2.20	0.41
1:A:1009:GLU:HB3	2:G:8:LEU:HB3	2.02	0.41
1:A:1133:LEU:CD2	1:A:1173:ASP:HA	2.50	0.41
1:A:682:VAL:HG11	1:A:717:TRP:CZ2	2.54	0.41
2:C:43:LEU:C	2:C:44:ILE:HD12	2.40	0.41
1:A:234:LEU:HD21	1:A:568:LEU:CD2	2.50	0.41
1:A:234:LEU:HD23	1:A:234:LEU:O	2.21	0.41
1:A:381:ASN:O	1:A:385:ARG:HB2	2.20	0.41
1:A:444:ILE:HG12	1:A:578:ALA:HB1	2.02	0.41
1:A:849:SER:HB3	1:A:865:VAL:CG2	2.49	0.41
1:A:832:TRP:HE1	2:D:44:ILE:HD12	1.83	0.41

*Continued on next page...*

Continued from previous page...

Atom-1	Atom-2	Interatomic distance (Å)	Clash overlap (Å)
2:G:43:LEU:O	2:G:44:ILE:HD13	2.21	0.41
1:A:234:LEU:CD2	1:A:568:LEU:HD22	2.51	0.41
1:A:585:GLN:O	1:A:1096:LYS:HE3	2.21	0.41
1:A:725:ILE:HD13	1:A:738:VAL:HA	2.02	0.41
1:A:989:LEU:CD2	1:A:1027:LYS:HG2	2.51	0.41
1:A:251:TYR:CZ	1:A:357:ALA:HB1	2.56	0.41
1:A:259:SER:N	1:A:339:ASP:OD1	2.54	0.41
1:A:620:HIS:HB2	1:A:623:HIS:O	2.20	0.41
2:D:23:ILE:HG22	2:D:27:LYS:HG3	2.02	0.41
1:A:1061:MET:SD	1:A:1061:MET:O	2.79	0.41
1:A:851:GLN:HG3	1:A:855:HIS:CE1	2.56	0.41
1:A:880:LEU:HD12	1:A:890:ARG:O	2.20	0.41
1:A:682:VAL:HG21	1:A:717:TRP:CG	2.56	0.41
1:A:724:ALA:C	1:A:730:ASP:HB3	2.40	0.41
1:A:957:HIS:CE1	2:G:72:ARG:HD2	2.55	0.41
1:A:1036:CYS:HB2	1:A:1051:ALA:HB3	2.03	0.40
1:A:1055:ILE:N	1:A:1055:ILE:CD1	2.84	0.40
1:A:306:LEU:N	1:A:306:LEU:HD12	2.36	0.40
1:A:986:THR:HG22	1:A:987:ASP:H	1.85	0.40
2:D:23:ILE:O	2:D:27:LYS:HG3	2.21	0.40
1:A:1148:ILE:CD1	1:A:1159:PHE:HZ	2.33	0.40
2:C:2:GLN:HE22	2:C:16:GLU:HG3	1.86	0.40
1:A:811:SER:C	1:A:813:MET:H	2.25	0.40
1:A:880:LEU:HD12	1:A:881:ASP:N	2.36	0.40
1:A:1061:MET:HE1	1:A:1064:ILE:CG2	2.51	0.40
1:A:544:ASN:OD1	1:A:547:ASP:HB2	2.22	0.40
2:C:30:ILE:HG21	2:C:41:GLN:NE2	2.35	0.40
1:A:945:ASN:OD1	2:G:66:THR:HG21	2.21	0.40
1:A:256:TYR:HD1	1:A:256:TYR:HA	1.79	0.40
1:A:377:GLN:HG3	1:A:381:ASN:OD1	2.22	0.40
2:C:4:PHE:O	2:C:67:LEU:N	2.49	0.40
1:A:710:PHE:HD1	2:D:74:ARG:HA	1.83	0.40

There are no symmetry-related clashes.

## 5.3 Torsion angles ⓘ

### 5.3.1 Protein backbone ⓘ

In the following table, the Percentiles column shows the percent Ramachandran outliers of the chain as a percentile score with respect to all X-ray entries followed by that with respect to entries

of similar resolution.

The Analysed column shows the number of residues for which the backbone conformation was analysed, and the total number of residues.

Mol	Chain	Analysed	Favoured	Allowed	Outliers	Percentiles	
1	A	955/968 (99%)	886 (93%)	58 (6%)	11 (1%)	13	48
2	C	69/78 (88%)	61 (88%)	5 (7%)	3 (4%)	2	18
2	D	74/78 (95%)	72 (97%)	1 (1%)	1 (1%)	11	44
2	G	75/78 (96%)	74 (99%)	0	1 (1%)	12	46
All	All	1173/1202 (98%)	1093 (93%)	64 (6%)	16 (1%)	11	44

All (16) Ramachandran outliers are listed below:

Mol	Chain	Res	Type
1	A	938	PRO
2	C	18	GLU
2	C	19	PRO
1	A	482	GLY
1	A	644	GLU
1	A	714	ASN
2	D	21	ASP
2	G	20	SER
1	A	1008	GLU
1	A	1065	ARG
1	A	1089	PRO
1	A	417	PRO
1	A	501	PHE
1	A	471	SER
1	A	499	LYS
2	C	38	PRO

### 5.3.2 Protein sidechains ⓘ

In the following table, the Percentiles column shows the percent sidechain outliers of the chain as a percentile score with respect to all X-ray entries followed by that with respect to entries of similar resolution.

The Analysed column shows the number of residues for which the sidechain conformation was analysed, and the total number of residues.

Mol	Chain	Analysed	Rotameric	Outliers	Percentiles	
1	A	828/844 (98%)	785 (95%)	43 (5%)	23	56

*Continued on next page...*

*Continued from previous page...*

Mol	Chain	Analysed	Rotameric	Outliers	Percentiles	
2	C	65/70 (93%)	63 (97%)	2 (3%)	40	71
2	D	68/70 (97%)	65 (96%)	3 (4%)	28	62
2	G	69/70 (99%)	69 (100%)	0	100	100
All	All	1030/1054 (98%)	982 (95%)	48 (5%)	26	60

All (48) residues with a non-rotameric sidechain are listed below:

Mol	Chain	Res	Type
1	A	256	TYR
1	A	270	ARG
1	A	311	ASP
1	A	339	ASP
1	A	355	ARG
1	A	372	ASP
1	A	379	ASP
1	A	393	ASP
1	A	413	ARG
1	A	423	GLN
1	A	431	ARG
1	A	499	LYS
1	A	501	PHE
1	A	513	LEU
1	A	581	GLU
1	A	593	LYS
1	A	617	ASP
1	A	673	HIS
1	A	714	ASN
1	A	816	ARG
1	A	846	LEU
1	A	848	HIS
1	A	849	SER
1	A	854	ARG
1	A	935	GLN
1	A	954	GLN
1	A	955	TYR
1	A	957	HIS
1	A	993	LEU
1	A	1021	LYS
1	A	1022	GLN
1	A	1031	ASP
1	A	1034	THR

*Continued on next page...*



*Continued from previous page...*

Mol	Chain	Res	Type
1	A	1036	CYS
1	A	1045	ILE
1	A	1055	ILE
1	A	1058	GLU
1	A	1060	GLU
1	A	1061	MET
1	A	1088	THR
1	A	1096	LYS
1	A	1132	ASN
1	A	1152	VAL
2	C	36	ILE
2	C	56	LEU
2	D	19	PRO
2	D	22	THR
2	D	44	ILE

Some sidechains can be flipped to improve hydrogen bonding and reduce clashes. All (4) such sidechains are listed below:

Mol	Chain	Res	Type
1	A	706	HIS
1	A	957	HIS
1	A	1037	GLN
2	D	31	GLN

### 5.3.3 RNA [i](#)

There are no RNA molecules in this entry.

### 5.4 Non-standard residues in protein, DNA, RNA chains [i](#)

There are no non-standard protein/DNA/RNA residues in this entry.

### 5.5 Carbohydrates [i](#)

There are no carbohydrates in this entry.

### 5.6 Ligand geometry [i](#)

1 ligand is modelled in this entry.

In the following table, the Counts columns list the number of bonds (or angles) for which Mogul statistics could be retrieved, the number of bonds (or angles) that are observed in the model and the number of bonds (or angles) that are defined in the Chemical Component Dictionary. The Link column lists molecule types, if any, to which the group is linked. The Z score for a bond length (or angle) is the number of standard deviations the observed value is removed from the expected value. A bond length (or angle) with  $|Z| > 2$  is considered an outlier worth inspection. RMSZ is the root-mean-square of all Z scores of the bond lengths (or angles).

Mol	Type	Chain	Res	Link	Bond lengths			Bond angles		
					Counts	RMSZ	# Z  > 2	Counts	RMSZ	# Z  > 2
3	NAI	A	1201	-	42,48,48	2.17	14 (33%)	47,73,73	1.81	13 (27%)

In the following table, the Chirals column lists the number of chiral outliers, the number of chiral centers analysed, the number of these observed in the model and the number defined in the Chemical Component Dictionary. Similar counts are reported in the Torsion and Rings columns. '-' means no outliers of that kind were identified.

Mol	Type	Chain	Res	Link	Chirals	Torsions	Rings
3	NAI	A	1201	-	-	8/25/72/72	0/5/5/5

All (14) bond length outliers are listed below:

Mol	Chain	Res	Type	Atoms	Z	Observed(Å)	Ideal(Å)
3	A	1201	NAI	C4N-C3N	-8.07	1.34	1.49
3	A	1201	NAI	C4N-C5N	-4.75	1.36	1.48
3	A	1201	NAI	C2B-C1B	-3.33	1.48	1.53
3	A	1201	NAI	C4A-N3A	-3.19	1.31	1.35
3	A	1201	NAI	O7N-C7N	-2.77	1.17	1.24
3	A	1201	NAI	C6N-N1N	-2.63	1.30	1.37
3	A	1201	NAI	C5A-N7A	-2.53	1.30	1.39
3	A	1201	NAI	C2B-C3B	-2.43	1.46	1.53
3	A	1201	NAI	O4B-C4B	-2.29	1.39	1.45
3	A	1201	NAI	C6N-C5N	2.22	1.37	1.33
3	A	1201	NAI	O4D-C4D	-2.13	1.40	1.45
3	A	1201	NAI	C2D-C3D	-2.09	1.47	1.53
3	A	1201	NAI	C7N-C3N	-2.06	1.44	1.48
3	A	1201	NAI	PN-O1N	-2.01	1.45	1.55

All (13) bond angle outliers are listed below:

Mol	Chain	Res	Type	Atoms	Z	Observed(°)	Ideal(°)
3	A	1201	NAI	O5B-PA-O1A	-4.09	93.09	109.07
3	A	1201	NAI	PN-O3-PA	-4.05	118.91	132.83
3	A	1201	NAI	O5D-C5D-C4D	3.27	120.23	108.99

*Continued on next page...*

*Continued from previous page...*

Mol	Chain	Res	Type	Atoms	Z	Observed(°)	Ideal(°)
3	A	1201	NAI	N3A-C2A-N1A	-3.19	123.69	128.68
3	A	1201	NAI	O4B-C4B-C5B	2.91	118.95	109.37
3	A	1201	NAI	C2D-C3D-C4D	2.86	108.20	102.64
3	A	1201	NAI	O2A-PA-O1A	2.85	126.34	112.24
3	A	1201	NAI	O5B-C5B-C4B	2.72	118.37	108.99
3	A	1201	NAI	O3D-C3D-C2D	-2.68	103.15	111.82
3	A	1201	NAI	C3B-C2B-C1B	2.37	104.55	100.98
3	A	1201	NAI	C2A-N1A-C6A	2.22	122.54	118.75
3	A	1201	NAI	O2B-C2B-C3B	-2.16	104.83	111.82
3	A	1201	NAI	C4A-C5A-N7A	-2.00	107.31	109.40

There are no chirality outliers.

All (8) torsion outliers are listed below:

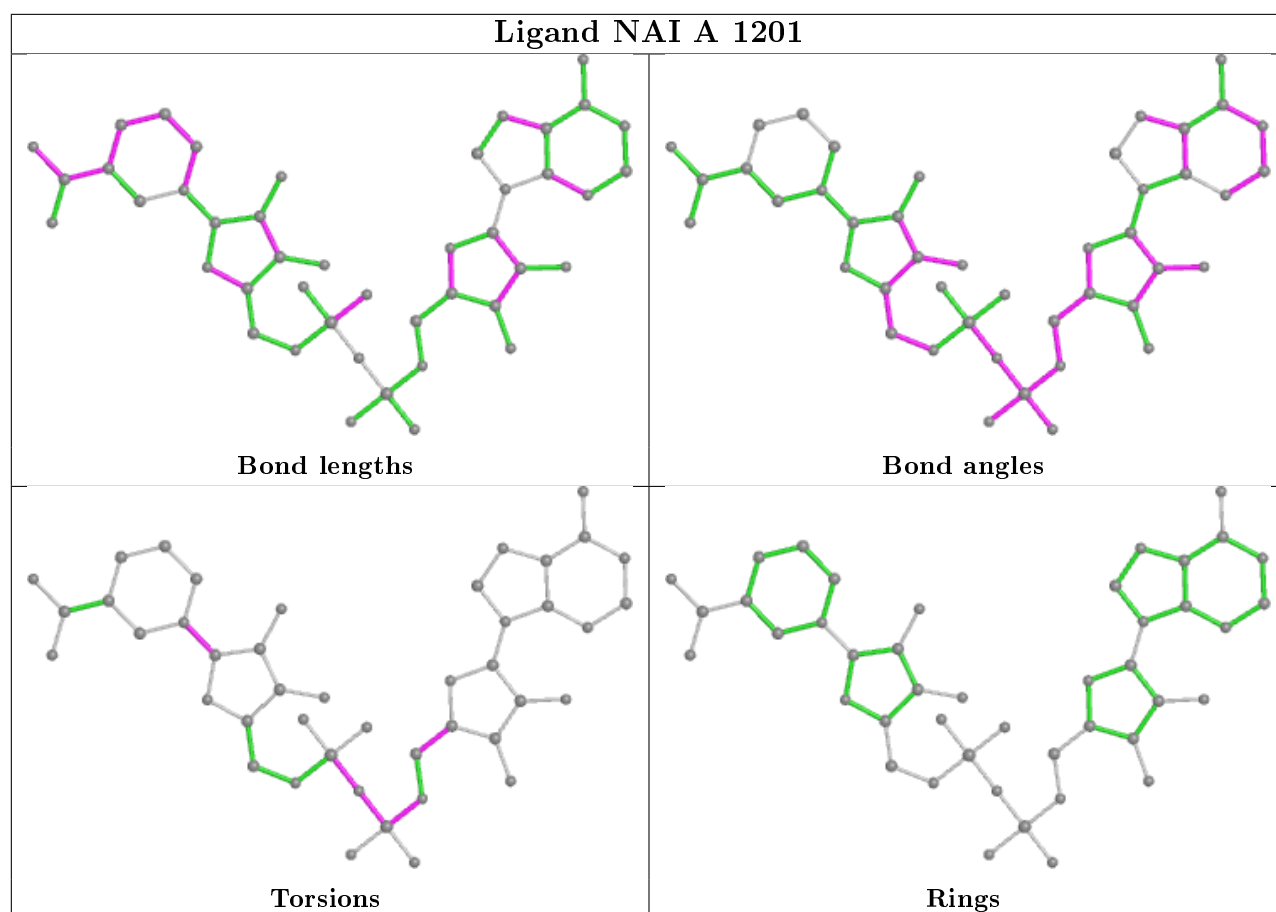
Mol	Chain	Res	Type	Atoms
3	A	1201	NAI	C5B-O5B-PA-O1A
3	A	1201	NAI	PN-O3-PA-O5B
3	A	1201	NAI	O4B-C4B-C5B-O5B
3	A	1201	NAI	C3B-C4B-C5B-O5B
3	A	1201	NAI	O4D-C1D-N1N-C6N
3	A	1201	NAI	C5B-O5B-PA-O3
3	A	1201	NAI	PN-O3-PA-O1A
3	A	1201	NAI	PA-O3-PN-O1N

There are no ring outliers.

1 monomer is involved in 9 short contacts:

Mol	Chain	Res	Type	Clashes	Symm-Clashes
3	A	1201	NAI	9	0

The following is a two-dimensional graphical depiction of Mogul quality analysis of bond lengths, bond angles, torsion angles, and ring geometry for all instances of the Ligand of Interest. In addition, ligands with molecular weight > 250 and outliers as shown on the validation Tables will also be included. For torsion angles, if less than 5% of the Mogul distribution of torsion angles is within 10 degrees of the torsion angle in question, then that torsion angle is considered an outlier. Any bond that is central to one or more torsion angles identified as an outlier by Mogul will be highlighted in the graph. For rings, the root-mean-square deviation (RMSD) between the ring in question and similar rings identified by Mogul is calculated over all ring torsion angles. If the average RMSD is greater than 60 degrees and the minimal RMSD between the ring in question and any Mogul-identified rings is also greater than 60 degrees, then that ring is considered an outlier. The outliers are highlighted in purple. The color gray indicates Mogul did not find sufficient equivalents in the CSD to analyse the geometry.



## 5.7 Other polymers [i](#)

There are no such residues in this entry.

## 5.8 Polymer linkage issues [i](#)

There are no chain breaks in this entry.

## 6 Fit of model and data ⓘ

### 6.1 Protein, DNA and RNA chains ⓘ

In the following table, the column labelled ‘#RSRZ> 2’ contains the number (and percentage) of RSRZ outliers, followed by percent RSRZ outliers for the chain as percentile scores relative to all X-ray entries and entries of similar resolution. The OWAB column contains the minimum, median, 95<sup>th</sup> percentile and maximum values of the occupancy-weighted average B-factor per residue. The column labelled ‘Q< 0.9’ lists the number of (and percentage) of residues with an average occupancy less than 0.9.

Mol	Chain	Analysed	<RSRZ>	#RSRZ>2	OWAB(Å <sup>2</sup> )	Q<0.9
1	A	959/968 (99%)	-0.10	10 (1%) 82 72	9, 42, 74, 99	0
2	C	71/78 (91%)	1.53	21 (29%) 0 0	62, 107, 132, 140	0
2	D	76/78 (97%)	0.76	7 (9%) 9 5	57, 86, 102, 109	0
2	G	77/78 (98%)	0.30	0 100 100	39, 61, 84, 93	0
All	All	1183/1202 (98%)	0.08	38 (3%) 47 31	9, 47, 99, 140	0

All (38) RSRZ outliers are listed below:

Mol	Chain	Res	Type	RSRZ
2	C	3	ILE	5.2
2	C	2	GLN	5.1
2	C	1	MET	4.3
2	D	76	GLY	4.2
2	C	35	GLY	3.9
2	C	63	LYS	3.8
2	D	32	ASP	3.5
2	C	5	VAL	3.4
1	A	1006	ASN	3.3
2	D	14	THR	3.2
1	A	680	VAL	3.1
2	D	2	GLN	3.1
2	C	25	ASN	3.1
2	C	50	LEU	3.1
2	C	13	ILE	2.9
2	D	34	GLU	2.9
2	C	27	LYS	2.8
2	C	10	GLY	2.7
1	A	1059	LYS	2.6
2	C	32	ASP	2.6
2	C	53	GLY	2.5

*Continued on next page...*

*Continued from previous page...*

Mol	Chain	Res	Type	RSRZ
2	C	37	PRO	2.5
1	A	485	ILE	2.5
1	A	987	ASP	2.4
2	C	54	ARG	2.4
1	A	1056	PRO	2.4
2	C	18	GLU	2.4
2	D	50	LEU	2.3
2	C	12	THR	2.2
1	A	675	THR	2.2
2	C	71	LEU	2.2
2	C	51	GLU	2.2
1	A	264	PRO	2.2
2	C	4	PHE	2.1
2	C	11	LYS	2.1
1	A	482	GLY	2.1
1	A	1061	MET	2.1
2	D	55	THR	2.1

## 6.2 Non-standard residues in protein, DNA, RNA chains ⓘ

There are no non-standard protein/DNA/RNA residues in this entry.

## 6.3 Carbohydrates ⓘ

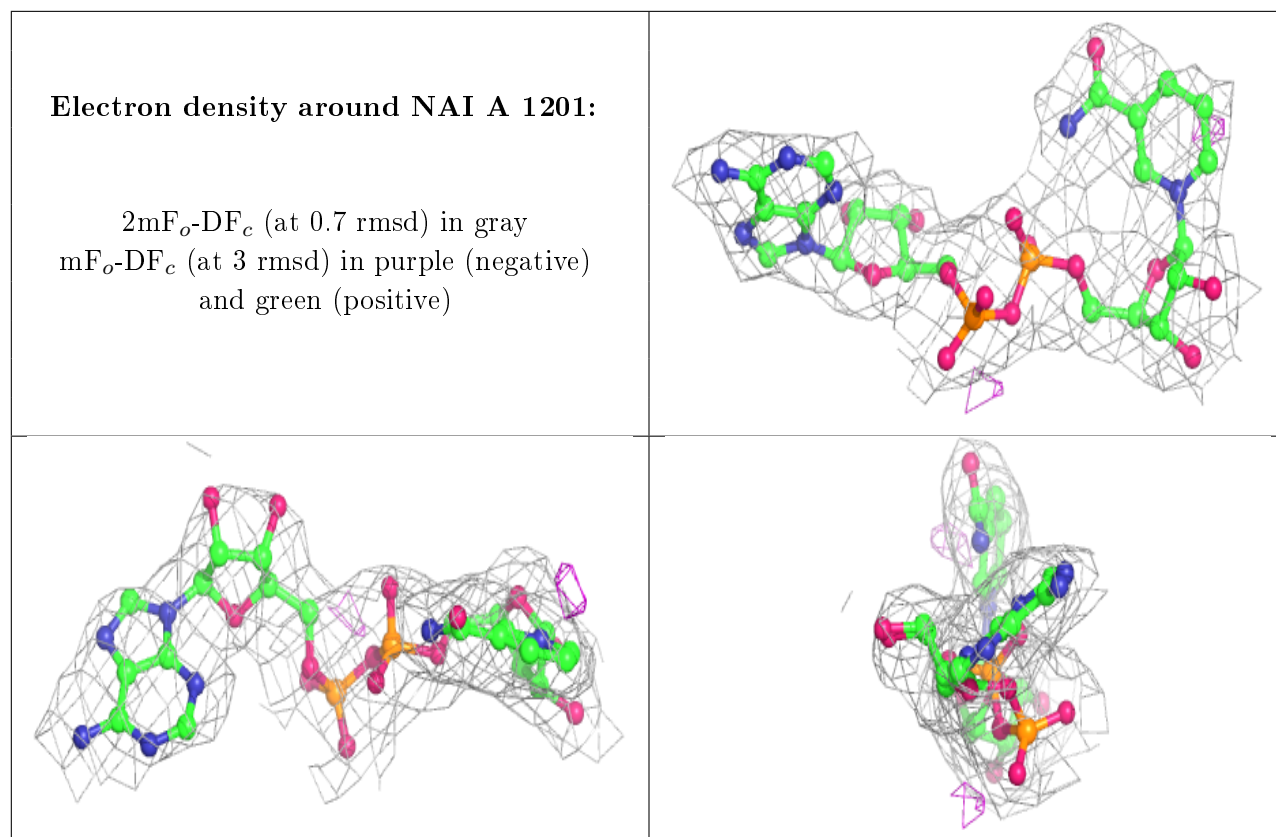
There are no carbohydrates in this entry.

## 6.4 Ligands ⓘ

In the following table, the Atoms column lists the number of modelled atoms in the group and the number defined in the chemical component dictionary. The B-factors column lists the minimum, median, 95<sup>th</sup> percentile and maximum values of B factors of atoms in the group. The column labelled 'Q< 0.9' lists the number of atoms with occupancy less than 0.9.

Mol	Type	Chain	Res	Atoms	RSCC	RSR	B-factors( $\text{\AA}^2$ )	Q<0.9
3	NAI	A	1201	44/44	0.94	0.18	29,45,55,87	0

The following is a graphical depiction of the model fit to experimental electron density of all instances of the Ligand of Interest. In addition, ligands with molecular weight > 250 and outliers as shown on the geometry validation Tables will also be included. Each fit is shown from different orientation to approximate a three-dimensional view.



## 6.5 Other polymers [i](#)

There are no such residues in this entry.