



Full wwPDB X-ray Structure Validation Report ⓘ

Aug 16, 2022 – 12:10 PM JST

PDB ID : 7YJA
Title : Crystal structure of Stenoloma chusanum chalcone synthase 1 (ScCHS1) complex with CoA and Pinocembrin
Authors : Li, J.X.; Cheng, A.X.; Zhang, P.
Deposited on : 2022-07-19
Resolution : 2.17 Å(reported)

This is a Full wwPDB X-ray Structure Validation Report for a publicly released PDB entry.

We welcome your comments at validation@mail.wwpdb.org

A user guide is available at

<https://www.wwpdb.org/validation/2017/XrayValidationReportHelp>

with specific help available everywhere you see the ⓘ symbol.

The types of validation reports are described at <http://www.wwpdb.org/validation/2017/FAQs#types>.

The following versions of software and data (see [references ⓘ](#)) were used in the production of this report:

MolProbity	:	4.02b-467
Mogul	:	1.8.5 (274361), CSD as541be (2020)
Xtriage (Phenix)	:	1.13
EDS	:	2.29
buster-report	:	1.1.7 (2018)
Percentile statistics	:	20191225.v01 (using entries in the PDB archive December 25th 2019)
Refmac	:	5.8.0158
CCP4	:	7.0.044 (Gargrove)
Ideal geometry (proteins)	:	Engh & Huber (2001)
Ideal geometry (DNA, RNA)	:	Parkinson et al. (1996)
Validation Pipeline (wwPDB-VP)	:	2.29

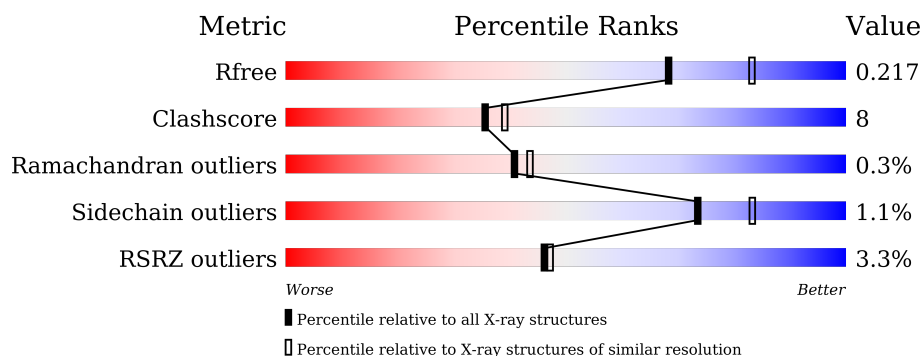
1 Overall quality at a glance

The following experimental techniques were used to determine the structure:

X-RAY DIFFRACTION

The reported resolution of this entry is 2.17 Å.

Percentile scores (ranging between 0-100) for global validation metrics of the entry are shown in the following graphic. The table shows the number of entries on which the scores are based.



Metric	Whole archive (#Entries)	Similar resolution (#Entries, resolution range(Å))
R_{free}	130704	6864 (2.20-2.16)
Clashscore	141614	7689 (2.20-2.16)
Ramachandran outliers	138981	7564 (2.20-2.16)
Sidechain outliers	138945	7564 (2.20-2.16)
RSRZ outliers	127900	6738 (2.20-2.16)

The table below summarises the geometric issues observed across the polymeric chains and their fit to the electron density. The red, orange, yellow and green segments of the lower bar indicate the fraction of residues that contain outliers for ≥ 3 , 2, 1 and 0 types of geometric quality criteria respectively. A grey segment represents the fraction of residues that are not modelled. The numeric value for each fraction is indicated below the corresponding segment, with a dot representing fractions $\leq 5\%$. The upper red bar (where present) indicates the fraction of residues that have poor fit to the electron density. The numeric value is given above the bar.

Mol	Chain	Length	Quality of chain
1	A	412	<div> <div>3%</div> <div> <div></div> <div>78%</div> <div>16%</div> <div>• 5%</div> </div> </div>
1	B	412	<div> <div>3%</div> <div> <div></div> <div>81%</div> <div>13%</div> <div>• 5%</div> </div> </div>

2 Entry composition [i](#)

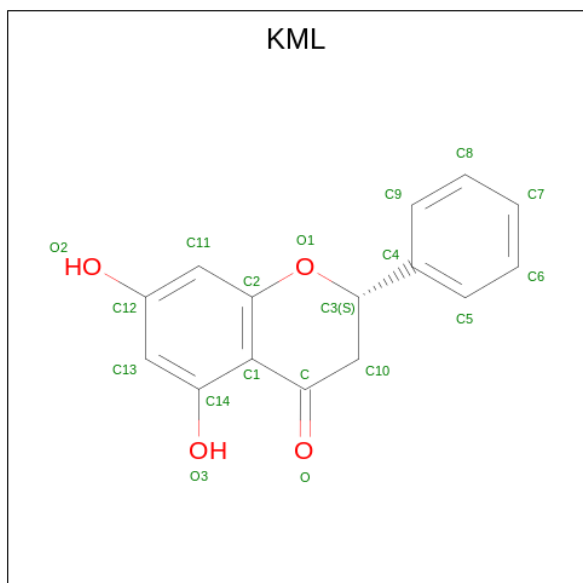
There are 4 unique types of molecules in this entry. The entry contains 6534 atoms, of which 0 are hydrogens and 0 are deuteriums.

In the tables below, the ZeroOcc column contains the number of atoms modelled with zero occupancy, the AltConf column contains the number of residues with at least one atom in alternate conformation and the Trace column contains the number of residues modelled with at most 2 atoms.

- Molecule 1 is a protein called chalcone synthase 1 (ScCHS1).

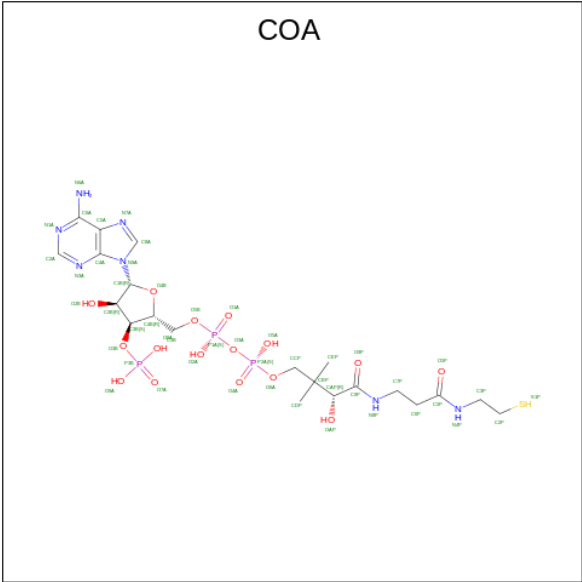
Mol	Chain	Residues	Atoms					ZeroOcc	AltConf	Trace
1	A	390	Total	C	N	O	S	0	0	0
			2979	1902	512	550	15			
1	B	390	Total	C	N	O	S	0	0	0
			2979	1902	512	550	15			

- Molecule 2 is pinocembrin (three-letter code: KML) (formula: C₁₅H₁₂O₄).



Mol	Chain	Residues	Atoms			ZeroOcc	AltConf
2	A	1	Total	C	O	0	0
			19	15	4		
2	B	1	Total	C	O	0	0
			19	15	4		

- Molecule 3 is COENZYME A (three-letter code: COA) (formula: C₂₁H₃₆N₇O₁₆P₃S).



Mol	Chain	Residues	Atoms						ZeroOcc	AltConf
3	A	1	Total	C	N	O	P	S	0	1
			49	21	7	16	3	2		
3	B	1	Total	C	N	O	P	S	0	1
			49	21	7	16	3	2		

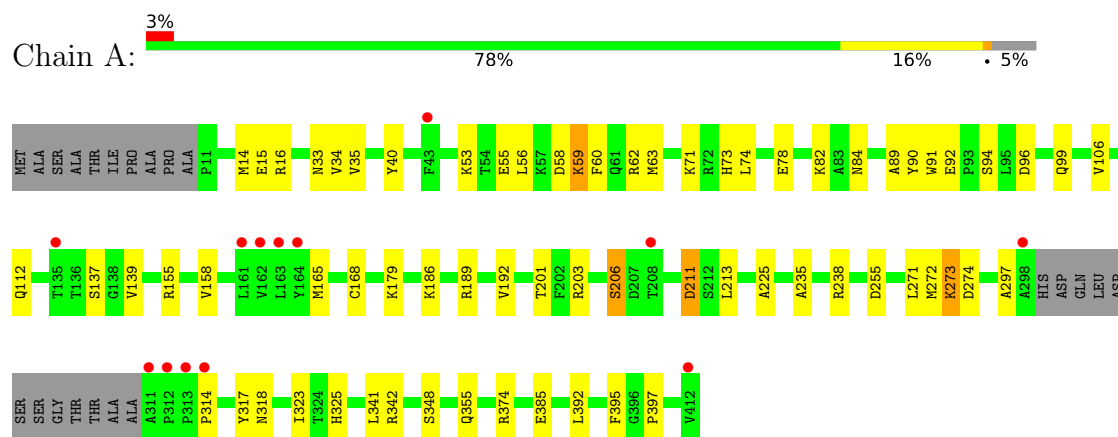
- Molecule 4 is water.

Mol	Chain	Residues	Atoms		ZeroOcc	AltConf
4	A	218	Total	O	0	0
			218	218		
4	B	222	Total	O	0	0
			222	222		

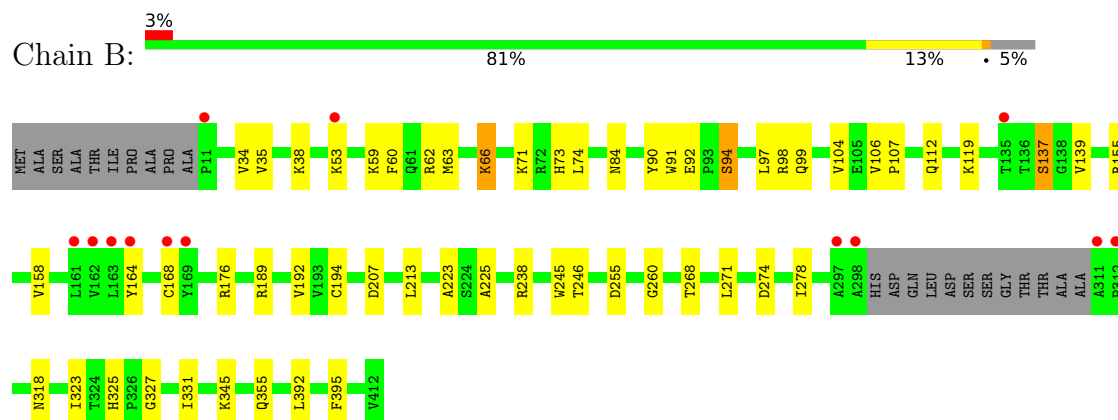
3 Residue-property plots [i](#)

These plots are drawn for all protein, RNA, DNA and oligosaccharide chains in the entry. The first graphic for a chain summarises the proportions of the various outlier classes displayed in the second graphic. The second graphic shows the sequence view annotated by issues in geometry and electron density. Residues are color-coded according to the number of geometric quality criteria for which they contain at least one outlier: green = 0, yellow = 1, orange = 2 and red = 3 or more. A red dot above a residue indicates a poor fit to the electron density ($RSRZ > 2$). Stretches of 2 or more consecutive residues without any outlier are shown as a green connector. Residues present in the sample, but not in the model, are shown in grey.

- Molecule 1: chalcone synthase 1 (ScCHS1)



- Molecule 1: chalcone synthase 1 (ScCHS1)



4 Data and refinement statistics

Property	Value	Source
Space group	P 1 21 1	Depositor
Cell constants a, b, c, α , β , γ	77.76Å 72.37Å 83.49Å 90.00° 97.37° 90.00°	Depositor
Resolution (Å)	46.39 – 2.17 46.39 – 2.17	Depositor EDS
% Data completeness (in resolution range)	86.0 (46.39-2.17) 81.1 (46.39-2.17)	Depositor EDS
R_{merge}	(Not available)	Depositor
R_{sym}	(Not available)	Depositor
$\langle I/\sigma(I) \rangle$ ¹	4.25 (at 2.18Å)	Xtriage
Refinement program	PHENIX 1.10_2155	Depositor
R, R_{free}	0.181 , 0.218 0.181 , 0.217	Depositor DCC
R_{free} test set	1988 reflections (4.73%)	wwPDB-VP
Wilson B-factor (Å ²)	27.3	Xtriage
Anisotropy	0.175	Xtriage
Bulk solvent k_{sol} (e/Å ³), B_{sol} (Å ²)	0.34 , 34.4	EDS
L-test for twinning ²	$\langle L \rangle = 0.49$, $\langle L^2 \rangle = 0.32$	Xtriage
Estimated twinning fraction	No twinning to report.	Xtriage
F_o, F_c correlation	0.95	EDS
Total number of atoms	6534	wwPDB-VP
Average B, all atoms (Å ²)	33.0	wwPDB-VP

Xtriage's analysis on translational NCS is as follows: *The largest off-origin peak in the Patterson function is 7.45% of the height of the origin peak. No significant pseudotranslation is detected.*

¹Intensities estimated from amplitudes.

²Theoretical values of $\langle |L| \rangle$, $\langle L^2 \rangle$ for acentric reflections are 0.5, 0.333 respectively for untwinned datasets, and 0.375, 0.2 for perfectly twinned datasets.

5 Model quality

5.1 Standard geometry

Bond lengths and bond angles in the following residue types are not validated in this section: COA, KML

The Z score for a bond length (or angle) is the number of standard deviations the observed value is removed from the expected value. A bond length (or angle) with $|Z| > 5$ is considered an outlier worth inspection. RMSZ is the root-mean-square of all Z scores of the bond lengths (or angles).

Mol	Chain	Bond lengths		Bond angles	
		RMSZ	$\# Z > 5$	RMSZ	$\# Z > 5$
1	A	0.51	0/3045	0.61	3/4133 (0.1%)
1	B	0.49	0/3045	0.59	2/4133 (0.0%)
All	All	0.50	0/6090	0.60	5/8266 (0.1%)

There are no bond length outliers.

All (5) bond angle outliers are listed below:

Mol	Chain	Res	Type	Atoms	Z	Observed(°)	Ideal(°)
1	A	238	ARG	NE-CZ-NH1	6.40	123.50	120.30
1	A	189	ARG	NE-CZ-NH1	6.25	123.43	120.30
1	B	238	ARG	NE-CZ-NH1	5.62	123.11	120.30
1	A	272	MET	CG-SD-CE	5.14	108.42	100.20
1	B	189	ARG	NE-CZ-NH1	5.14	122.87	120.30

There are no chirality outliers.

There are no planarity outliers.

5.2 Too-close contacts

In the following table, the Non-H and H(model) columns list the number of non-hydrogen atoms and hydrogen atoms in the chain respectively. The H(added) column lists the number of hydrogen atoms added and optimized by MolProbity. The Clashes column lists the number of clashes within the asymmetric unit, whereas Symm-Clashes lists symmetry-related clashes.

Mol	Chain	Non-H	H(model)	H(added)	Clashes	Symm-Clashes
1	A	2979	0	3018	56	0
1	B	2979	0	3018	45	0
2	A	19	0	0	1	0
2	B	19	0	0	0	0

Continued on next page...

Continued from previous page...

Mol	Chain	Non-H	H(model)	H(added)	Clashes	Symm-Clashes
3	A	49	0	6	0	0
3	B	49	0	6	0	0
4	A	218	0	0	13	0
4	B	222	0	0	5	0
All	All	6534	0	6048	99	0

The all-atom clashscore is defined as the number of clashes found per 1000 atoms (including hydrogen atoms). The all-atom clashscore for this structure is 8.

All (99) close contacts within the same asymmetric unit are listed below, sorted by their clash magnitude.

Atom-1	Atom-2	Interatomic distance (Å)	Clash overlap (Å)
1:A:374:ARG:NH2	1:A:385:GLU:OE2	1.81	1.13
1:A:348:SER:OG	1:A:374:ARG:NH1	1.91	1.02
1:A:273:LYS:HE2	1:A:273:LYS:H	1.23	1.01
1:B:112:GLN:OE1	4:B:601:HOH:O	1.85	0.92
1:A:112:GLN:OE1	4:A:601:HOH:O	1.92	0.87
1:B:255:ASP:OD1	4:B:602:HOH:O	1.91	0.86
1:B:92:GLU:OE1	4:B:603:HOH:O	1.95	0.84
1:A:273:LYS:H	1:A:273:LYS:CE	1.90	0.84
1:A:63:MET:HE1	1:A:213:LEU:HB3	1.62	0.79
1:A:59:LYS:N	1:A:59:LYS:HD3	1.96	0.78
1:B:66:LYS:O	1:B:66:LYS:HE2	1.83	0.77
1:A:273:LYS:HE2	1:A:273:LYS:N	2.01	0.76
1:B:318:ASN:HA	1:B:345:LYS:HD2	1.68	0.76
1:B:99:GLN:HE22	1:B:139:VAL:H	1.34	0.74
1:A:235:ALA:O	4:A:603:HOH:O	2.08	0.72
1:A:318:ASN:HD21	1:A:342:ARG:H	1.37	0.72
1:B:38:LYS:NZ	4:B:604:HOH:O	2.21	0.71
1:A:255:ASP:OD1	4:A:604:HOH:O	2.12	0.68
1:A:16:ARG:NH1	4:A:602:HOH:O	1.95	0.68
1:A:84:ASN:OD1	4:A:605:HOH:O	2.15	0.65
1:B:155:ARG:HG2	1:B:158:VAL:HG23	1.79	0.64
1:A:99:GLN:HE22	1:A:139:VAL:H	1.45	0.64
1:A:273:LYS:H	1:A:273:LYS:CD	2.11	0.62
1:A:35:VAL:HG21	1:A:74:LEU:HD12	1.81	0.61
1:A:211:ASP:OD1	1:A:211:ASP:N	2.33	0.60
1:B:274:ASP:HA	4:B:640:HOH:O	2.00	0.60
1:B:71:LYS:HE3	1:B:355:GLN:OE1	2.03	0.59
1:B:94:SER:O	1:B:98:ARG:HG3	2.03	0.57
1:A:112:GLN:HB2	4:A:601:HOH:O	2.04	0.57

Continued on next page...

Continued from previous page...

Atom-1	Atom-2	Interatomic distance (Å)	Clash overlap (Å)
1:B:53:LYS:NZ	1:B:207:ASP:OD1	2.38	0.57
1:A:89:ALA:HB3	1:A:92:GLU:HG2	1.88	0.56
1:B:34:VAL:HG12	1:B:73:HIS:CE1	2.41	0.55
1:A:53:LYS:NZ	4:A:610:HOH:O	2.33	0.55
1:A:314:PRO:O	4:A:606:HOH:O	2.18	0.54
1:B:60:PHE:HA	1:B:63:MET:HE2	1.89	0.54
1:A:14:MET:SD	1:B:245:TRP:HA	2.49	0.53
1:A:59:LYS:HD2	1:A:62:ARG:HH12	1.74	0.53
1:A:71:LYS:HE3	1:A:355:GLN:OE1	2.09	0.52
1:A:60:PHE:CD1	1:A:213:LEU:HD22	2.44	0.52
1:A:63:MET:CE	1:A:213:LEU:HB3	2.34	0.52
1:A:59:LYS:HD3	1:A:59:LYS:H	1.74	0.51
1:A:59:LYS:O	1:A:63:MET:HG3	2.12	0.50
1:B:84:ASN:HB3	1:B:97:LEU:HD21	1.94	0.50
1:B:104:VAL:O	1:B:107:PRO:HD2	2.12	0.49
1:B:73:HIS:O	1:B:74:LEU:HD23	2.12	0.49
1:B:35:VAL:HG21	1:B:74:LEU:HD12	1.93	0.49
1:B:139:VAL:HG12	1:B:164:TYR:CG	2.48	0.49
1:B:274:ASP:O	1:B:278:ILE:HG12	2.13	0.49
1:A:165:MET:HG3	1:B:139:VAL:HB	1.95	0.48
1:A:273:LYS:N	1:A:273:LYS:CD	2.75	0.48
1:B:192:VAL:O	1:B:225:ALA:HA	2.13	0.48
1:A:168:CYS:HB3	1:A:325:HIS:NE2	2.28	0.48
1:A:323:ILE:O	1:A:392:LEU:HA	2.14	0.47
1:A:58:ASP:O	1:A:62:ARG:HG3	2.13	0.47
1:A:297:ALA:N	4:A:612:HOH:O	2.38	0.47
1:B:168:CYS:HB3	1:B:325:HIS:NE2	2.30	0.46
1:A:35:VAL:HG11	1:A:40:TYR:HD1	1.80	0.46
1:B:323:ILE:O	1:B:392:LEU:HA	2.16	0.46
1:A:168:CYS:HB2	1:A:395:PHE:O	2.16	0.46
1:A:206:SER:HA	4:A:610:HOH:O	2.15	0.46
1:A:318:ASN:ND2	1:A:342:ARG:H	2.11	0.46
1:B:63:MET:CE	1:B:213:LEU:HB3	2.45	0.45
1:B:90:TYR:CD1	1:B:91:TRP:HB2	2.51	0.45
1:A:34:VAL:HG22	1:A:73:HIS:CE1	2.53	0.44
1:A:274:ASP:HA	4:A:630:HOH:O	2.16	0.44
1:A:179:LYS:HE3	4:A:639:HOH:O	2.17	0.44
1:A:317:TYR:HB3	1:A:341:LEU:CD2	2.48	0.44
1:A:397:PRO:HD3	2:A:501:KML:O2	2.17	0.44
1:A:90:TYR:CD1	1:A:91:TRP:HB2	2.53	0.44
1:B:106:VAL:HG21	1:B:137:SER:HB2	2.00	0.43

Continued on next page...

Continued from previous page...

Atom-1	Atom-2	Interatomic distance (Å)	Clash overlap (Å)
1:B:168:CYS:HB2	1:B:395:PHE:O	2.18	0.43
1:A:192:VAL:O	1:A:225:ALA:HA	2.19	0.43
1:B:194:CYS:O	1:B:223:ALA:HA	2.18	0.43
1:A:201:THR:O	1:A:203:ARG:NH1	2.52	0.43
1:A:155:ARG:O	1:A:158:VAL:HG12	2.19	0.42
1:A:56:LEU:HD12	1:A:56:LEU:HA	1.88	0.42
1:B:176:ARG:HA	1:B:246:THR:HG21	2.02	0.42
1:B:63:MET:HE3	1:B:213:LEU:HB3	2.02	0.42
1:A:78:GLU:HG2	1:A:82:LYS:HD3	2.02	0.41
1:B:119:LYS:HE2	1:B:119:LYS:HB2	1.91	0.41
1:B:260:GLY:HA2	1:B:268:THR:O	2.21	0.41
1:A:15:GLU:OE1	1:A:186:LYS:HE3	2.20	0.41
1:A:33:ASN:HB3	1:A:74:LEU:O	2.21	0.41
1:A:96:ASP:HA	4:A:629:HOH:O	2.21	0.41
1:B:327:GLY:HA3	1:B:331:ILE:HD12	2.03	0.41
1:A:106:VAL:HG21	1:A:137:SER:HB2	2.03	0.40

There are no symmetry-related clashes.

5.3 Torsion angles ⓘ

5.3.1 Protein backbone ⓘ

In the following table, the Percentiles column shows the percent Ramachandran outliers of the chain as a percentile score with respect to all X-ray entries followed by that with respect to entries of similar resolution.

The Analysed column shows the number of residues for which the backbone conformation was analysed, and the total number of residues.

Mol	Chain	Analysed	Favoured	Allowed	Outliers	Percentiles	
1	A	386/412 (94%)	377 (98%)	8 (2%)	1 (0%)	41	43
1	B	386/412 (94%)	377 (98%)	8 (2%)	1 (0%)	41	43
All	All	772/824 (94%)	754 (98%)	16 (2%)	2 (0%)	41	43

All (2) Ramachandran outliers are listed below:

Mol	Chain	Res	Type
1	A	94	SER
1	B	94	SER

5.3.2 Protein sidechains ⓘ

In the following table, the Percentiles column shows the percent sidechain outliers of the chain as a percentile score with respect to all X-ray entries followed by that with respect to entries of similar resolution.

The Analysed column shows the number of residues for which the sidechain conformation was analysed, and the total number of residues.

Mol	Chain	Analysed	Rotameric	Outliers	Percentiles	
1	A	322/337 (96%)	317 (98%)	5 (2%)	62	74
1	B	322/337 (96%)	320 (99%)	2 (1%)	86	92
All	All	644/674 (96%)	637 (99%)	7 (1%)	73	83

All (7) residues with a non-rotameric sidechain are listed below:

Mol	Chain	Res	Type
1	A	55	GLU
1	A	59	LYS
1	A	206	SER
1	A	211	ASP
1	A	273	LYS
1	B	66	LYS
1	B	137	SER

Sometimes sidechains can be flipped to improve hydrogen bonding and reduce clashes. All (5) such sidechains are listed below:

Mol	Chain	Res	Type
1	A	99	GLN
1	A	318	ASN
1	B	99	GLN
1	B	123	GLN
1	B	184	ASN

5.3.3 RNA ⓘ

There are no RNA molecules in this entry.

5.4 Non-standard residues in protein, DNA, RNA chains ⓘ

There are no non-standard protein/DNA/RNA residues in this entry.

5.5 Carbohydrates [i](#)

There are no monosaccharides in this entry.

5.6 Ligand geometry [i](#)

6 ligands are modelled in this entry.

In the following table, the Counts columns list the number of bonds (or angles) for which Mogul statistics could be retrieved, the number of bonds (or angles) that are observed in the model and the number of bonds (or angles) that are defined in the Chemical Component Dictionary. The Link column lists molecule types, if any, to which the group is linked. The Z score for a bond length (or angle) is the number of standard deviations the observed value is removed from the expected value. A bond length (or angle) with $|Z| > 2$ is considered an outlier worth inspection. RMSZ is the root-mean-square of all Z scores of the bond lengths (or angles).

Mol	Type	Chain	Res	Link	Bond lengths			Bond angles		
					Counts	RMSZ	# Z > 2	Counts	RMSZ	# Z > 2
3	COA	A	502[A]	-	41,50,50	1.10	2 (4%)	52,75,75	5.05	14 (26%)
3	COA	A	502[B]	-	41,50,50	1.11	2 (4%)	52,75,75	5.05	14 (26%)
3	COA	B	502[A]	-	41,50,50	1.21	2 (4%)	52,75,75	5.02	13 (25%)
3	COA	B	502[B]	-	41,50,50	1.21	2 (4%)	52,75,75	5.02	13 (25%)
2	KML	A	501	-	21,21,21	3.67	12 (57%)	30,30,30	2.31	5 (16%)
2	KML	B	501	-	21,21,21	3.70	13 (61%)	30,30,30	2.25	5 (16%)

In the following table, the Chirals column lists the number of chiral outliers, the number of chiral centers analysed, the number of these observed in the model and the number defined in the Chemical Component Dictionary. Similar counts are reported in the Torsion and Rings columns. '-' means no outliers of that kind were identified.

Mol	Type	Chain	Res	Link	Chirals	Torsions	Rings
3	COA	A	502[A]	-	-	11/44/64/64	0/3/3/3
3	COA	A	502[B]	-	-	11/44/64/64	0/3/3/3
3	COA	B	502[A]	-	-	10/44/64/64	0/3/3/3
3	COA	B	502[B]	-	-	9/44/64/64	0/3/3/3
2	KML	A	501	-	-	0/4/16/16	0/3/3/3
2	KML	B	501	-	-	0/4/16/16	0/3/3/3

All (33) bond length outliers are listed below:

Mol	Chain	Res	Type	Atoms	Z	Observed(Å)	Ideal(Å)
2	B	501	KML	O-C	11.19	1.40	1.22

Continued on next page...

Continued from previous page...

Mol	Chain	Res	Type	Atoms	Z	Observed(Å)	Ideal(Å)
2	A	501	KML	O-C	11.14	1.40	1.22
2	A	501	KML	O3-C14	5.83	1.48	1.36
2	B	501	KML	O3-C14	5.49	1.47	1.36
2	B	501	KML	O2-C12	4.63	1.47	1.37
2	A	501	KML	O2-C12	4.55	1.47	1.37
2	B	501	KML	C11-C12	-4.26	1.32	1.39
2	B	501	KML	C1-C2	-4.19	1.33	1.40
2	A	501	KML	C1-C2	-3.92	1.33	1.40
2	A	501	KML	C13-C14	-3.81	1.33	1.38
2	A	501	KML	C11-C12	-3.75	1.33	1.39
2	B	501	KML	C13-C14	-3.69	1.33	1.38
2	A	501	KML	C4-C3	3.63	1.57	1.51
2	B	501	KML	C4-C3	3.57	1.57	1.51
2	A	501	KML	O1-C3	-3.23	1.36	1.44
2	B	501	KML	O1-C3	-3.18	1.37	1.44
2	B	501	KML	C1-C	3.03	1.53	1.46
2	A	501	KML	O1-C2	3.02	1.42	1.38
2	A	501	KML	C1-C	2.88	1.53	1.46
2	B	501	KML	C1-C14	-2.70	1.37	1.41
2	A	501	KML	C1-C14	-2.65	1.37	1.41
2	B	501	KML	O1-C2	2.64	1.41	1.38
3	B	502[A]	COA	C5A-N7A	-2.56	1.30	1.39
3	B	502[B]	COA	C5A-N7A	-2.56	1.30	1.39
3	A	502[A]	COA	C2B-C1B	-2.35	1.50	1.53
3	A	502[B]	COA	C2B-C1B	-2.35	1.50	1.53
2	B	501	KML	C10-C	2.33	1.54	1.50
2	A	501	KML	C6-C5	-2.24	1.34	1.38
3	A	502[A]	COA	C5A-N7A	-2.24	1.31	1.39
3	A	502[B]	COA	C5A-N7A	-2.24	1.31	1.39
2	B	501	KML	C6-C5	-2.22	1.34	1.38
3	B	502[A]	COA	P3B-O8A	-2.22	1.46	1.54
3	B	502[B]	COA	P3B-O8A	-2.22	1.46	1.54

All (64) bond angle outliers are listed below:

Mol	Chain	Res	Type	Atoms	Z	Observed(°)	Ideal(°)
3	B	502[A]	COA	CDP-CBP-CCP	-21.20	73.65	108.23
3	B	502[B]	COA	CDP-CBP-CCP	-21.20	73.65	108.23
3	A	502[A]	COA	CDP-CBP-CCP	-21.12	73.79	108.23
3	A	502[B]	COA	CDP-CBP-CCP	-21.12	73.79	108.23
3	A	502[A]	COA	CEP-CBP-CCP	20.24	141.25	108.23
3	A	502[B]	COA	CEP-CBP-CCP	20.24	141.25	108.23

Continued on next page...

Continued from previous page...

Mol	Chain	Res	Type	Atoms	Z	Observed(°)	Ideal(°)
3	B	502[A]	COA	CEP-CBP-CCP	19.30	139.71	108.23
3	B	502[B]	COA	CEP-CBP-CCP	19.30	139.71	108.23
3	A	502[A]	COA	CEP-CBP-CDP	-16.02	76.51	109.17
3	A	502[B]	COA	CEP-CBP-CDP	-16.02	76.51	109.17
3	B	502[A]	COA	CEP-CBP-CDP	-15.66	77.24	109.17
3	B	502[B]	COA	CEP-CBP-CDP	-15.66	77.24	109.17
3	B	502[A]	COA	CDP-CBP-CAP	9.29	124.92	108.82
3	B	502[B]	COA	CDP-CBP-CAP	9.29	124.92	108.82
3	A	502[A]	COA	CDP-CBP-CAP	9.14	124.67	108.82
3	A	502[B]	COA	CDP-CBP-CAP	9.14	124.67	108.82
2	A	501	KML	O-C-C1	-7.57	110.40	122.38
2	B	501	KML	O-C-C1	-7.10	111.14	122.38
3	A	502[A]	COA	CEP-CBP-CAP	-6.13	98.19	108.82
3	A	502[B]	COA	CEP-CBP-CAP	-6.13	98.19	108.82
2	A	501	KML	O-C-C10	-6.09	112.23	120.79
3	B	502[A]	COA	CEP-CBP-CAP	-5.96	98.49	108.82
3	B	502[B]	COA	CEP-CBP-CAP	-5.96	98.49	108.82
2	B	501	KML	C10-C-C1	-5.88	106.85	117.12
2	A	501	KML	C10-C-C1	-4.85	108.64	117.12
3	B	502[A]	COA	C7P-C6P-C5P	-4.61	104.67	112.36
3	B	502[B]	COA	C7P-C6P-C5P	-4.61	104.67	112.36
2	B	501	KML	O-C-C10	-4.47	114.50	120.79
3	A	502[A]	COA	O4B-C1B-C2B	-4.02	101.05	106.93
3	A	502[B]	COA	O4B-C1B-C2B	-4.02	101.05	106.93
3	B	502[A]	COA	O4B-C1B-C2B	-3.79	101.39	106.93
3	B	502[B]	COA	O4B-C1B-C2B	-3.79	101.39	106.93
2	A	501	KML	C14-C1-C2	3.75	121.16	117.35
3	B	502[A]	COA	N3A-C2A-N1A	-3.65	122.97	128.68
3	B	502[B]	COA	N3A-C2A-N1A	-3.65	122.97	128.68
3	B	502[A]	COA	C2P-C3P-N4P	-3.30	104.75	112.31
3	B	502[B]	COA	C2P-C3P-N4P	-3.30	104.75	112.31
2	B	501	KML	C14-C1-C2	3.27	120.68	117.35
3	B	502[A]	COA	O6A-CCP-CBP	-3.27	105.29	110.55
3	B	502[B]	COA	O6A-CCP-CBP	-3.27	105.29	110.55
3	A	502[A]	COA	N3A-C2A-N1A	-3.12	123.80	128.68
3	A	502[B]	COA	N3A-C2A-N1A	-3.12	123.80	128.68
3	B	502[A]	COA	C4A-C5A-N7A	-2.92	106.36	109.40
3	B	502[B]	COA	C4A-C5A-N7A	-2.92	106.36	109.40
3	B	502[A]	COA	P2A-O3A-P1A	-2.91	122.84	132.83
3	B	502[B]	COA	P2A-O3A-P1A	-2.91	122.84	132.83
2	B	501	KML	O3-C14-C1	-2.69	116.10	121.14
3	A	502[A]	COA	P2A-O3A-P1A	-2.69	123.60	132.83

Continued on next page...

Continued from previous page...

Mol	Chain	Res	Type	Atoms	Z	Observed(°)	Ideal(°)
3	A	502[B]	COA	P2A-O3A-P1A	-2.69	123.60	132.83
3	A	502[A]	COA	OAP-CAP-CBP	-2.34	104.75	110.25
3	A	502[B]	COA	OAP-CAP-CBP	-2.34	104.75	110.25
3	A	502[A]	COA	C4A-C5A-N7A	-2.32	106.99	109.40
3	A	502[B]	COA	C4A-C5A-N7A	-2.32	106.99	109.40
3	A	502[A]	COA	C6P-C5P-N4P	2.31	120.31	116.42
3	A	502[B]	COA	C6P-C5P-N4P	2.31	120.31	116.42
3	A	502[A]	COA	O5P-C5P-N4P	-2.29	118.69	123.01
3	A	502[B]	COA	O5P-C5P-N4P	-2.29	118.69	123.01
3	B	502[A]	COA	O2A-P1A-O1A	2.26	123.42	112.24
3	B	502[B]	COA	O2A-P1A-O1A	2.26	123.42	112.24
3	A	502[A]	COA	O2A-P1A-O1A	2.18	122.99	112.24
3	A	502[B]	COA	O2A-P1A-O1A	2.18	122.99	112.24
3	A	502[A]	COA	O3B-P3B-O7A	-2.09	101.33	109.39
3	A	502[B]	COA	O3B-P3B-O7A	-2.09	101.33	109.39
2	A	501	KML	O3-C14-C1	-2.05	117.30	121.14

There are no chirality outliers.

All (41) torsion outliers are listed below:

Mol	Chain	Res	Type	Atoms
3	A	502[A]	COA	CDP-CBP-CCP-O6A
3	A	502[A]	COA	CAP-CBP-CCP-O6A
3	A	502[A]	COA	OAP-CAP-CBP-CCP
3	A	502[A]	COA	C9P-CAP-CBP-CCP
3	A	502[A]	COA	OAP-CAP-CBP-CEP
3	A	502[A]	COA	C9P-CAP-CBP-CEP
3	A	502[A]	COA	C5P-C6P-C7P-N8P
3	A	502[A]	COA	C6P-C5P-N4P-C3P
3	A	502[A]	COA	O5P-C5P-N4P-C3P
3	A	502[B]	COA	CDP-CBP-CCP-O6A
3	A	502[B]	COA	CAP-CBP-CCP-O6A
3	A	502[B]	COA	OAP-CAP-CBP-CCP
3	A	502[B]	COA	C9P-CAP-CBP-CCP
3	A	502[B]	COA	OAP-CAP-CBP-CEP
3	A	502[B]	COA	C9P-CAP-CBP-CEP
3	A	502[B]	COA	C5P-C6P-C7P-N8P
3	A	502[B]	COA	C6P-C5P-N4P-C3P
3	A	502[B]	COA	O5P-C5P-N4P-C3P
3	B	502[A]	COA	CDP-CBP-CCP-O6A
3	B	502[A]	COA	CAP-CBP-CCP-O6A
3	B	502[A]	COA	OAP-CAP-CBP-CCP

Continued on next page...

Continued from previous page...

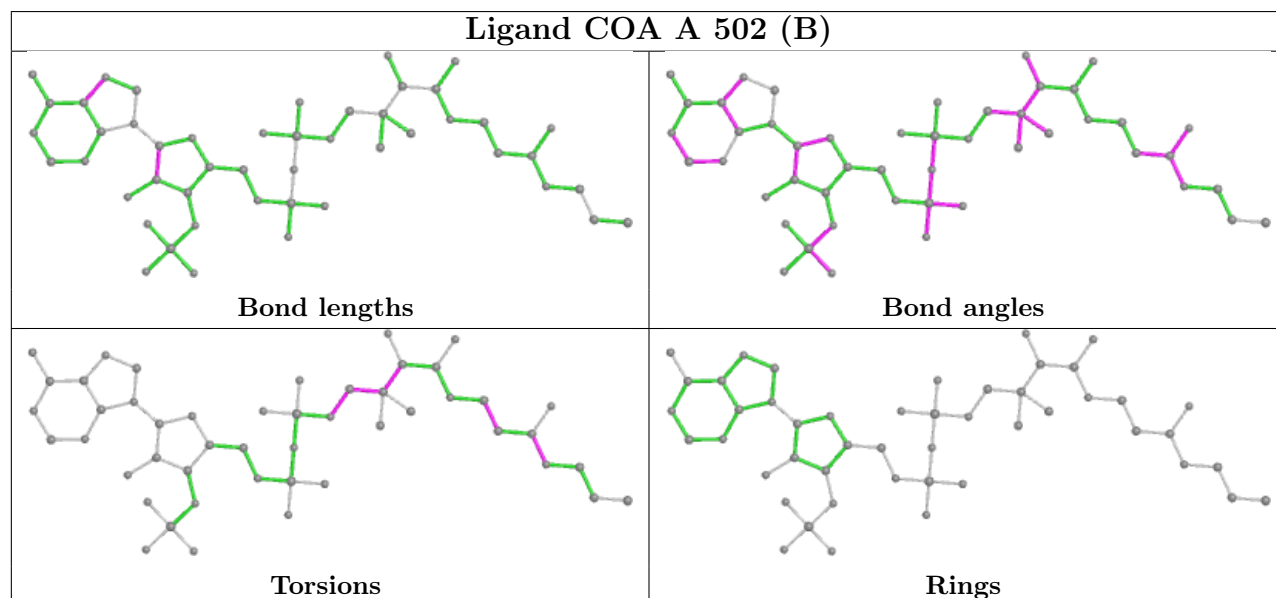
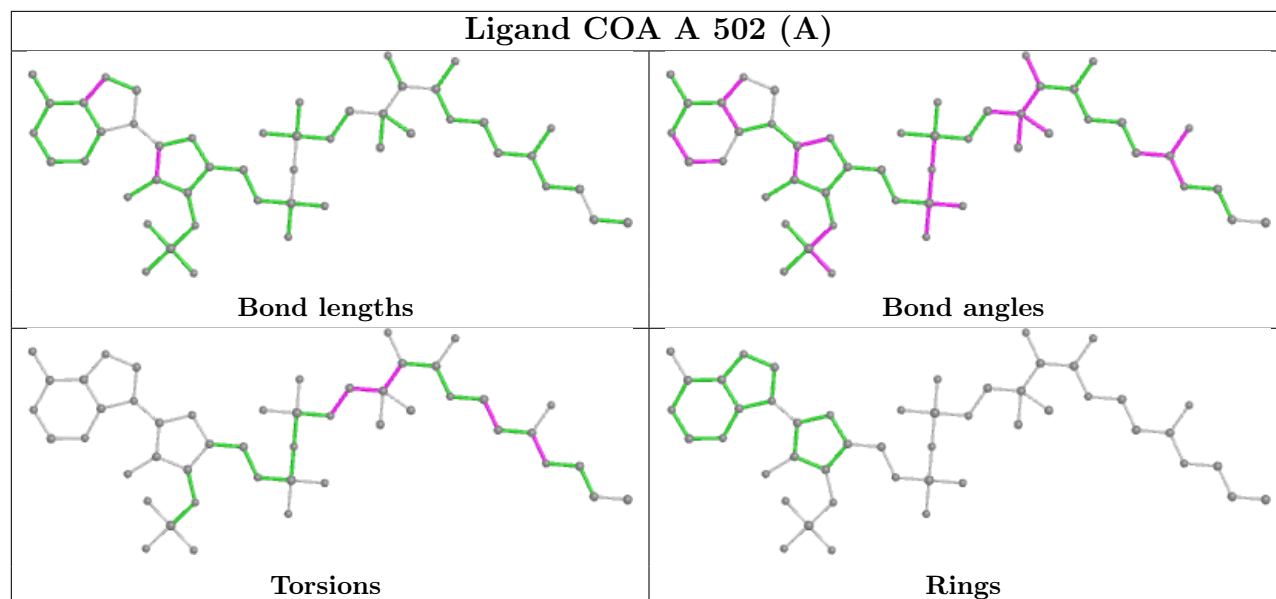
Mol	Chain	Res	Type	Atoms
3	B	502[A]	COA	C9P-CAP-CBP-CCP
3	B	502[A]	COA	OAP-CAP-CBP-CEP
3	B	502[A]	COA	C9P-CAP-CBP-CEP
3	B	502[A]	COA	C5P-C6P-C7P-N8P
3	B	502[A]	COA	S1P-C2P-C3P-N4P
3	B	502[B]	COA	CDP-CBP-CCP-O6A
3	B	502[B]	COA	CAP-CBP-CCP-O6A
3	B	502[B]	COA	OAP-CAP-CBP-CCP
3	B	502[B]	COA	C9P-CAP-CBP-CCP
3	B	502[B]	COA	OAP-CAP-CBP-CEP
3	B	502[B]	COA	C9P-CAP-CBP-CEP
3	B	502[B]	COA	C5P-C6P-C7P-N8P
3	A	502[A]	COA	CEP-CBP-CCP-O6A
3	A	502[B]	COA	CEP-CBP-CCP-O6A
3	B	502[A]	COA	CEP-CBP-CCP-O6A
3	B	502[B]	COA	CEP-CBP-CCP-O6A
3	B	502[A]	COA	P1A-O3A-P2A-O4A
3	B	502[B]	COA	P1A-O3A-P2A-O4A
3	A	502[A]	COA	CBP-CCP-O6A-P2A
3	A	502[B]	COA	CBP-CCP-O6A-P2A

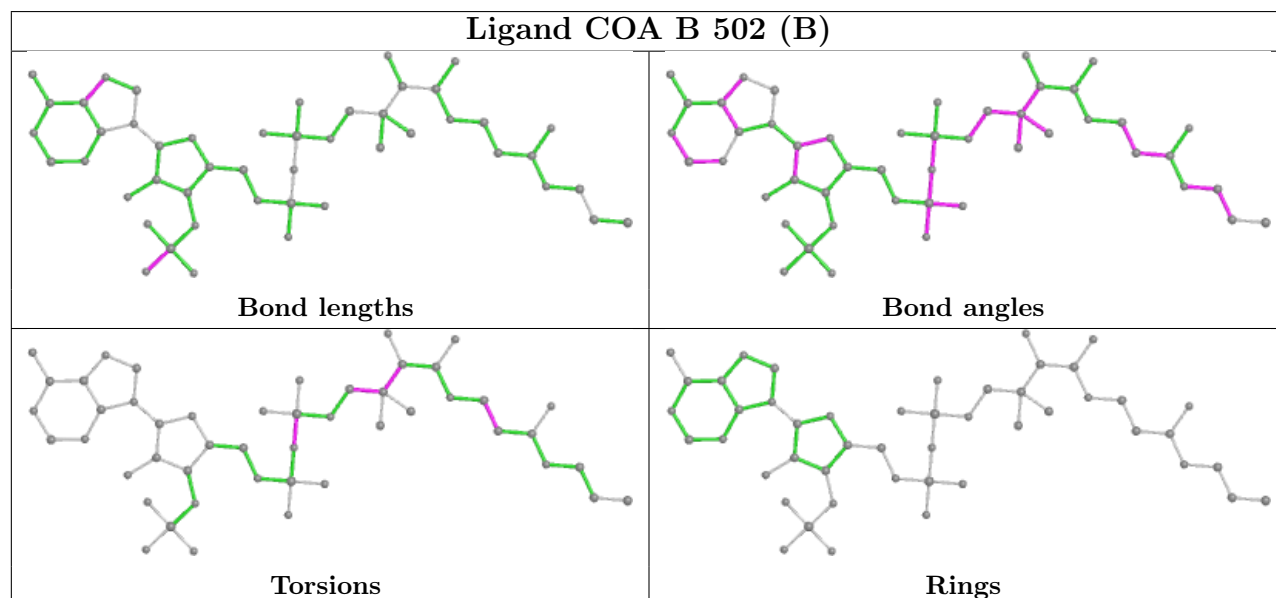
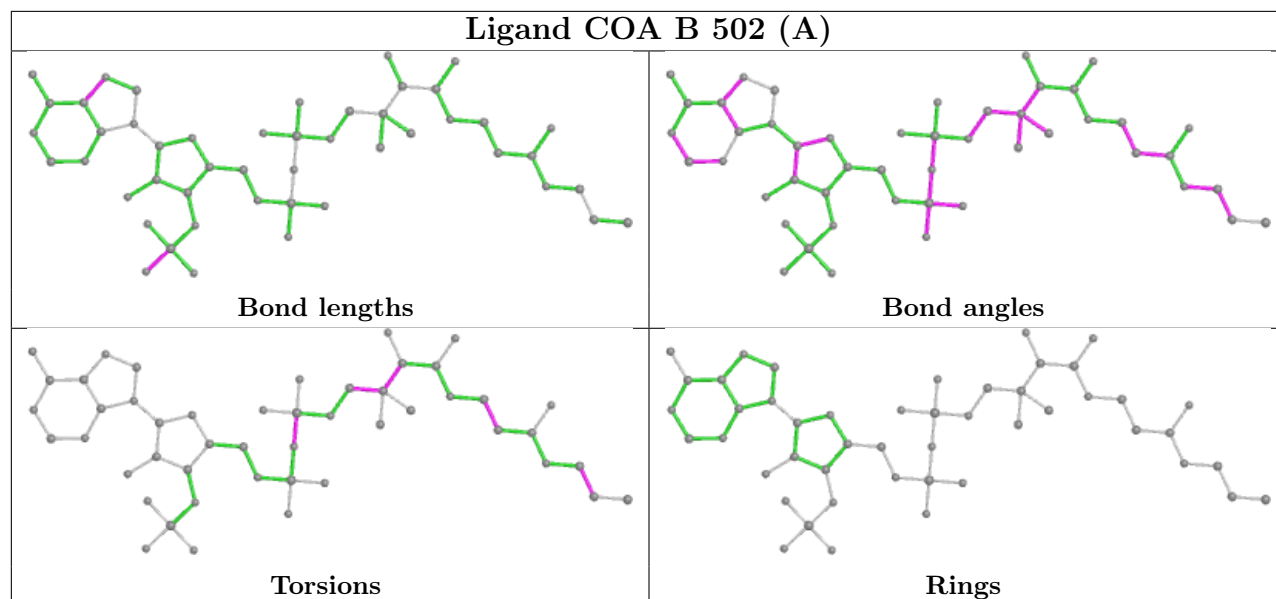
There are no ring outliers.

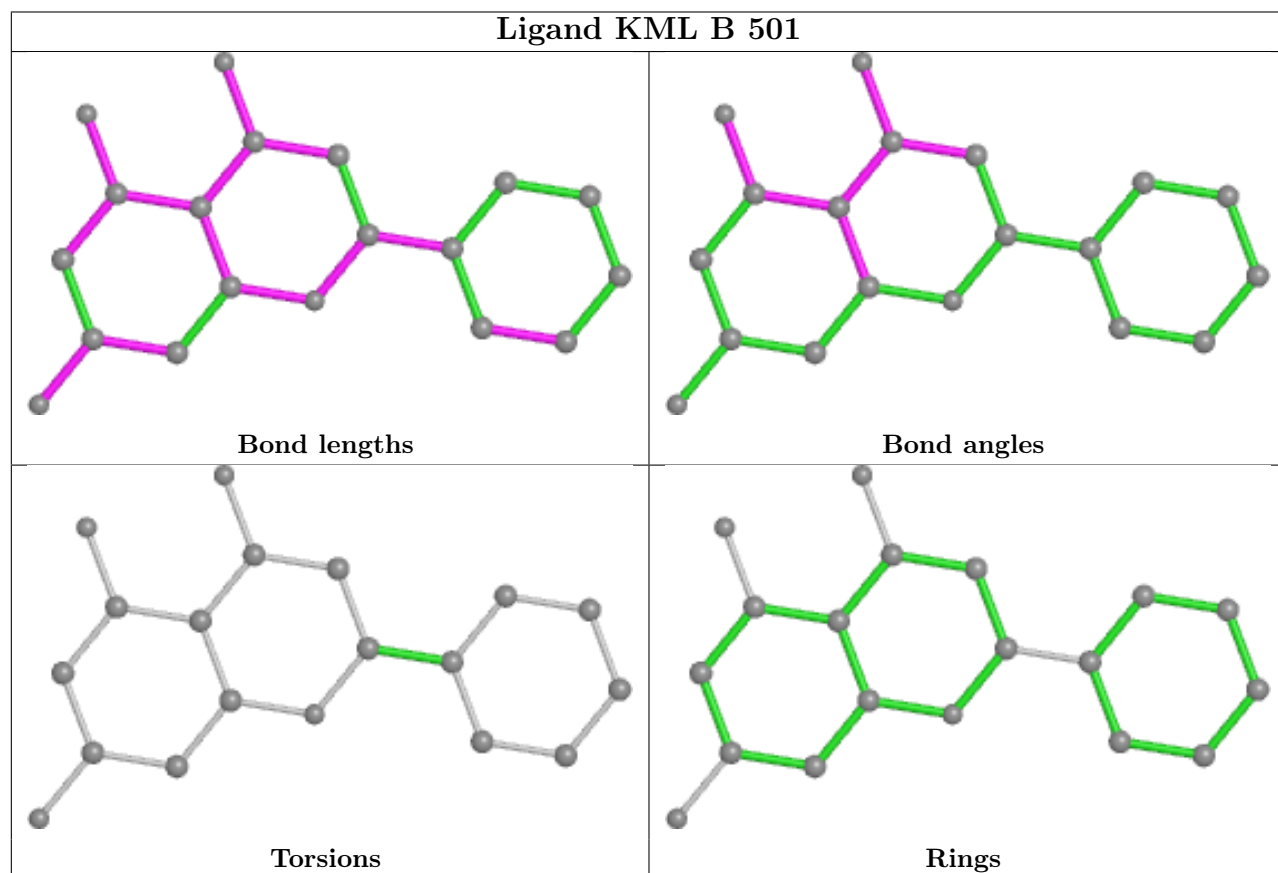
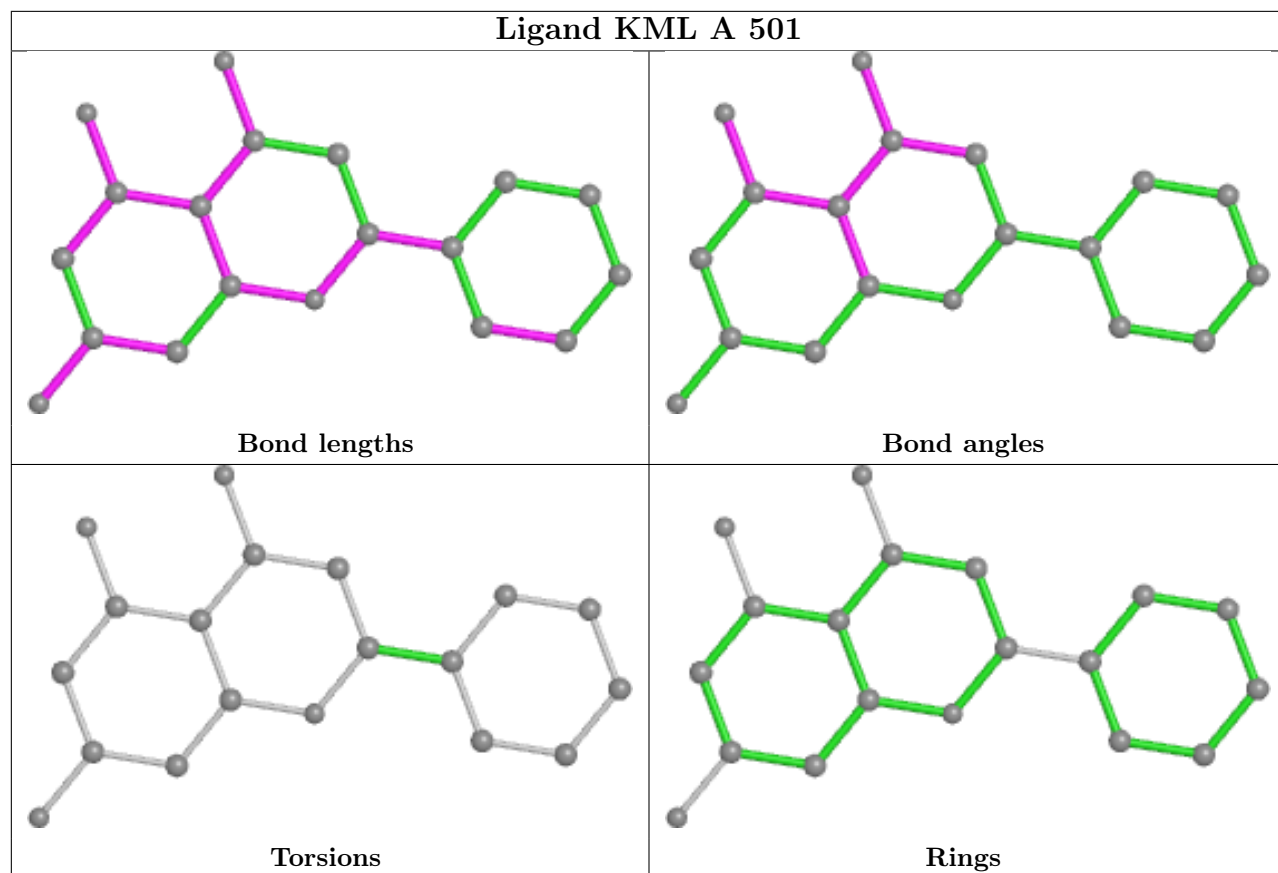
1 monomer is involved in 1 short contact:

Mol	Chain	Res	Type	Clashes	Symm-Clashes
2	A	501	KML	1	0

The following is a two-dimensional graphical depiction of Mogul quality analysis of bond lengths, bond angles, torsion angles, and ring geometry for all instances of the Ligand of Interest. In addition, ligands with molecular weight > 250 and outliers as shown on the validation Tables will also be included. For torsion angles, if less than 5% of the Mogul distribution of torsion angles is within 10 degrees of the torsion angle in question, then that torsion angle is considered an outlier. Any bond that is central to one or more torsion angles identified as an outlier by Mogul will be highlighted in the graph. For rings, the root-mean-square deviation (RMSD) between the ring in question and similar rings identified by Mogul is calculated over all ring torsion angles. If the average RMSD is greater than 60 degrees and the minimal RMSD between the ring in question and any Mogul-identified rings is also greater than 60 degrees, then that ring is considered an outlier. The outliers are highlighted in purple. The color gray indicates Mogul did not find sufficient equivalents in the CSD to analyse the geometry.







5.7 Other polymers

There are no such residues in this entry.

5.8 Polymer linkage issues

There are no chain breaks in this entry.

6 Fit of model and data ⓘ

6.1 Protein, DNA and RNA chains ⓘ

In the following table, the column labelled ‘#RSRZ > 2’ contains the number (and percentage) of RSRZ outliers, followed by percent RSRZ outliers for the chain as percentile scores relative to all X-ray entries and entries of similar resolution. The OWAB column contains the minimum, median, 95th percentile and maximum values of the occupancy-weighted average B-factor per residue. The column labelled ‘Q < 0.9’ lists the number of (and percentage) of residues with an average occupancy less than 0.9.

Mol	Chain	Analysed	<RSRZ>	#RSRZ>2	OWAB(Å ²)	Q<0.9
1	A	390/412 (94%)	0.04	13 (3%) 46 47	21, 29, 48, 75	0
1	B	390/412 (94%)	0.23	13 (3%) 46 47	22, 30, 50, 79	0
All	All	780/824 (94%)	0.14	26 (3%) 46 47	21, 30, 49, 79	0

All (26) RSRZ outliers are listed below:

Mol	Chain	Res	Type	RSRZ
1	A	298	ALA	5.3
1	A	312	PRO	4.5
1	B	311	ALA	4.4
1	B	298	ALA	4.3
1	B	164	TYR	3.7
1	A	311	ALA	3.7
1	A	313	PRO	3.5
1	B	11	PRO	3.4
1	B	163	LEU	3.1
1	A	164	TYR	3.1
1	B	312	PRO	3.1
1	A	162	VAL	3.0
1	B	162	VAL	2.9
1	A	208	THR	2.8
1	B	168	CYS	2.8
1	A	43	PHE	2.7
1	A	314	PRO	2.5
1	B	161	LEU	2.4
1	A	163	LEU	2.4
1	A	161	LEU	2.3
1	B	297	ALA	2.3
1	B	135	THR	2.2
1	A	135	THR	2.2
1	B	169	TYR	2.2

Continued on next page...

Continued from previous page...

Mol	Chain	Res	Type	RSRZ
1	A	412	VAL	2.1
1	B	53	LYS	2.1

6.2 Non-standard residues in protein, DNA, RNA chains [i](#)

There are no non-standard protein/DNA/RNA residues in this entry.

6.3 Carbohydrates [i](#)

There are no monosaccharides in this entry.

6.4 Ligands [i](#)

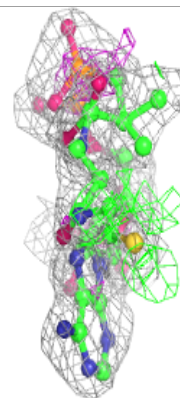
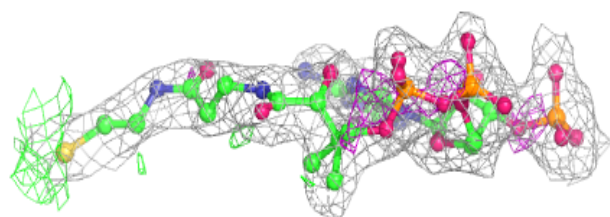
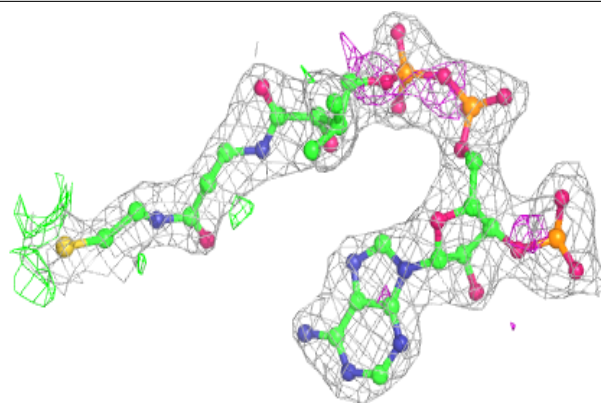
In the following table, the Atoms column lists the number of modelled atoms in the group and the number defined in the chemical component dictionary. The B-factors column lists the minimum, median, 95th percentile and maximum values of B factors of atoms in the group. The column labelled 'Q<0.9' lists the number of atoms with occupancy less than 0.9.

Mol	Type	Chain	Res	Atoms	RSCC	RSR	B-factors(\AA^2)	Q<0.9
3	COA	A	502[A]	48/48	0.87	0.19	36,54,78,80	1
3	COA	A	502[B]	48/48	0.87	0.19	36,54,78,80	1
2	KML	A	501	19/19	0.88	0.20	31,41,45,45	0
2	KML	B	501	19/19	0.89	0.18	33,42,47,51	0
3	COA	B	502[A]	48/48	0.90	0.15	34,48,65,71	1
3	COA	B	502[B]	48/48	0.90	0.15	34,48,65,71	1

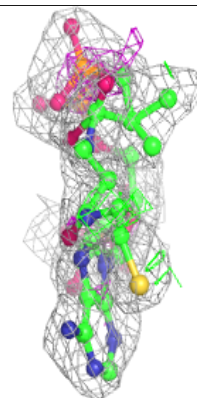
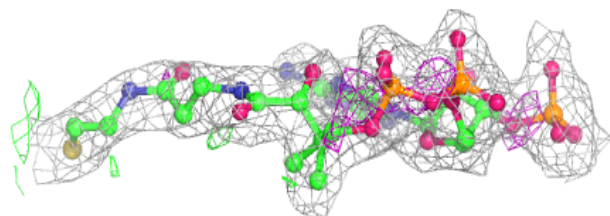
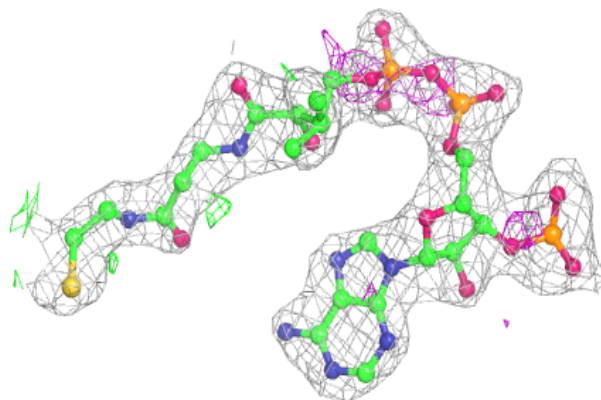
The following is a graphical depiction of the model fit to experimental electron density of all instances of the Ligand of Interest. In addition, ligands with molecular weight > 250 and outliers as shown on the geometry validation Tables will also be included. Each fit is shown from different orientation to approximate a three-dimensional view.

Electron density around COA A 502 (A):

$2mF_o-DF_c$ (at 0.7 rmsd) in gray
 mF_o-DF_c (at 3 rmsd) in purple (negative)
and green (positive)

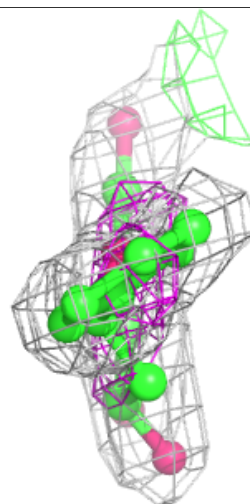
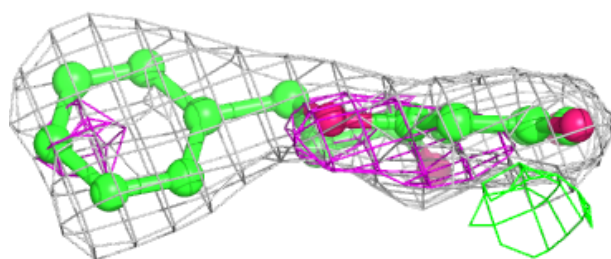
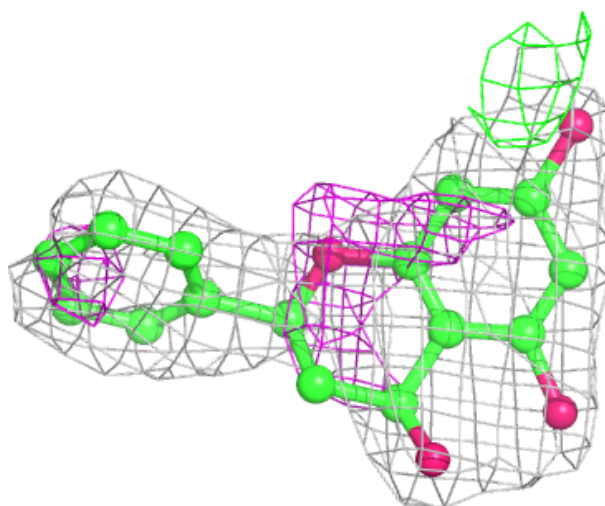
**Electron density around COA A 502 (B):**

$2mF_o-DF_c$ (at 0.7 rmsd) in gray
 mF_o-DF_c (at 3 rmsd) in purple (negative)
and green (positive)



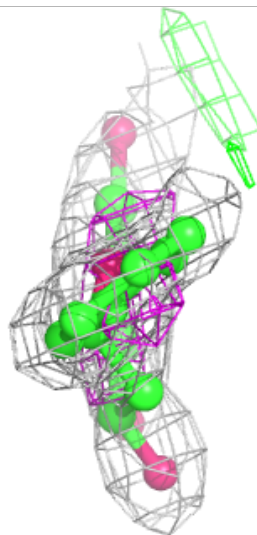
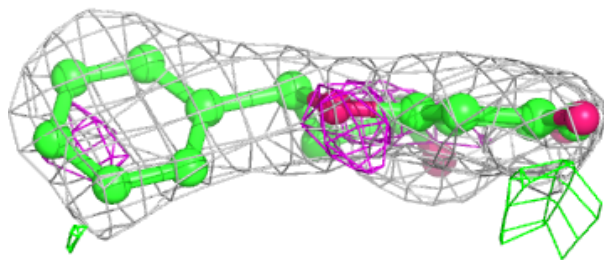
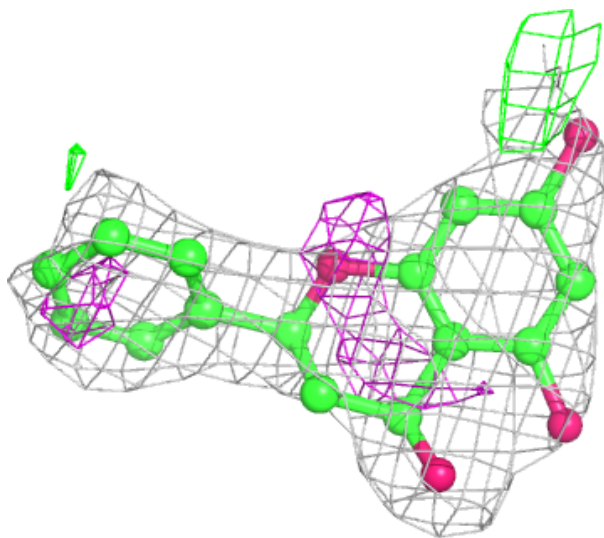
Electron density around KML A 501:

$2mF_o-DF_c$ (at 0.7 rmsd) in gray
 mF_o-DF_c (at 3 rmsd) in purple (negative)
and green (positive)



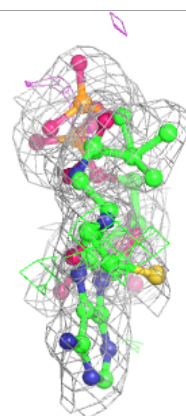
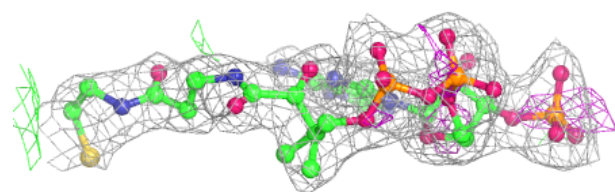
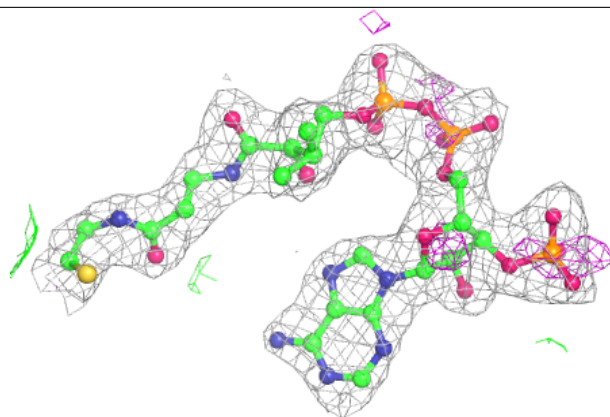
Electron density around KML B 501:

$2mF_o-DF_c$ (at 0.7 rmsd) in gray
 mF_o-DF_c (at 3 rmsd) in purple (negative)
and green (positive)

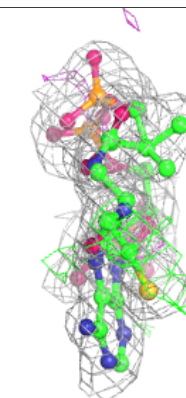
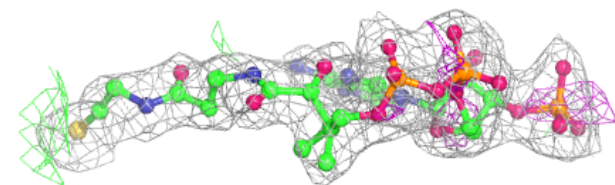
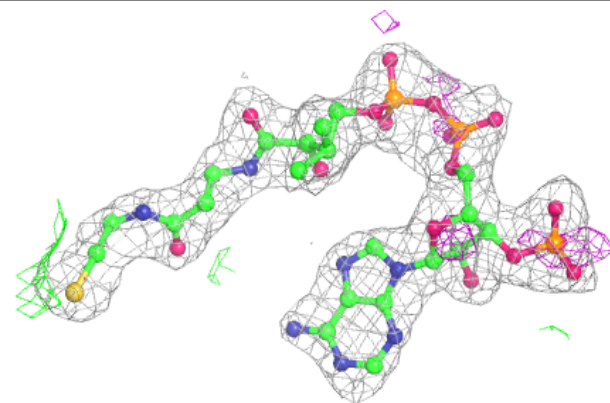


Electron density around COA B 502 (A):

$2mF_o-DF_c$ (at 0.7 rmsd) in gray
 mF_o-DF_c (at 3 rmsd) in purple (negative)
and green (positive)

**Electron density around COA B 502 (B):**

$2mF_o-DF_c$ (at 0.7 rmsd) in gray
 mF_o-DF_c (at 3 rmsd) in purple (negative)
and green (positive)



6.5 Other polymers [i](#)

There are no such residues in this entry.