



# Full wwPDB X-ray Structure Validation Report ⓘ

May 16, 2020 – 12:49 pm BST

PDB ID : 2YK6  
Title : Structure of Neisseria LOS-specific sialyltransferase (NST), in complex with CDP.  
Authors : Lin, L.Y.C.; Rakic, B.; Chiu, C.P.C.; Lameignere, E.; Wakarchuk, W.W.; Withers, S.G.; Strynadka, N.C.J.  
Deposited on : 2011-05-25  
Resolution : 2.83 Å(reported)

This is a Full wwPDB X-ray Structure Validation Report for a publicly released PDB entry.

We welcome your comments at [validation@mail.wwpdb.org](mailto:validation@mail.wwpdb.org)

A user guide is available at

<https://www.wwpdb.org/validation/2017/XrayValidationReportHelp>

with specific help available everywhere you see the ⓘ symbol.

---

The following versions of software and data (see [references ⓘ](#)) were used in the production of this report:

MolProbity : 4.02b-467  
Mogul : 1.8.5 (274361), CSD as541be (2020)  
Xtriage (Phenix) : 1.13  
EDS : 2.11  
buster-report : 1.1.7 (2018)  
Percentile statistics : 20191225.v01 (using entries in the PDB archive December 25th 2019)  
Refmac : 5.8.0158  
CCP4 : 7.0.044 (Gargrove)  
Ideal geometry (proteins) : Engh & Huber (2001)  
Ideal geometry (DNA, RNA) : Parkinson et al. (1996)  
Validation Pipeline (wwPDB-VP) : 2.11

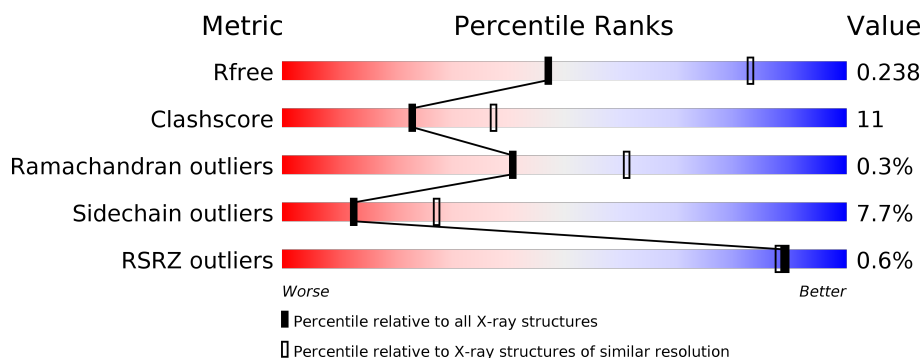
# 1 Overall quality at a glance

The following experimental techniques were used to determine the structure:

## *X-RAY DIFFRACTION*

The reported resolution of this entry is 2.83 Å.

Percentile scores (ranging between 0-100) for global validation metrics of the entry are shown in the following graphic. The table shows the number of entries on which the scores are based.



Metric	Whole archive (#Entries)	Similar resolution (#Entries, resolution range(Å))
$R_{free}$	130704	1031 (2.86-2.82)
Clashscore	141614	1078 (2.86-2.82)
Ramachandran outliers	138981	1050 (2.86-2.82)
Sidechain outliers	138945	1051 (2.86-2.82)
RSRZ outliers	127900	1019 (2.86-2.82)

The table below summarises the geometric issues observed across the polymeric chains and their fit to the electron density. The red, orange, yellow and green segments on the lower bar indicate the fraction of residues that contain outliers for  $\geq 3$ , 2, 1 and 0 types of geometric quality criteria respectively. A grey segment represents the fraction of residues that are not modelled. The numeric value for each fraction is indicated below the corresponding segment, with a dot representing fractions  $\leq 5\%$ . The upper red bar (where present) indicates the fraction of residues that have poor fit to the electron density. The numeric value is given above the bar.

Mol	Chain	Length	Quality of chain
1	A	326	<div> <div></div> <div>71%</div> <div>26%</div> <div></div> </div>

## 2 Entry composition

There are 5 unique types of molecules in this entry. The entry contains 2764 atoms, of which 0 are hydrogens and 0 are deuteriums.

In the tables below, the ZeroOcc column contains the number of atoms modelled with zero occupancy, the AltConf column contains the number of residues with at least one atom in alternate conformation and the Trace column contains the number of residues modelled with at most 2 atoms.

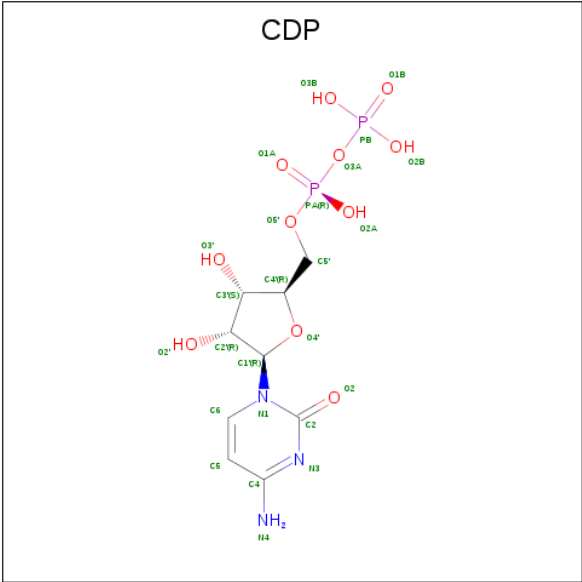
- Molecule 1 is a protein called CMP-N-ACETYLNEURAMINATE-BETA-GALACTOSAMIDE-ALPHA-2,3-SIALYLTRANSFERASE.

Mol	Chain	Residues	Atoms					ZeroOcc	AltConf	Trace
1	A	325	Total	C	N	O	S	0	0	0
			2637	1715	429	481	12			

There are 9 discrepancies between the modelled and reference sequences:

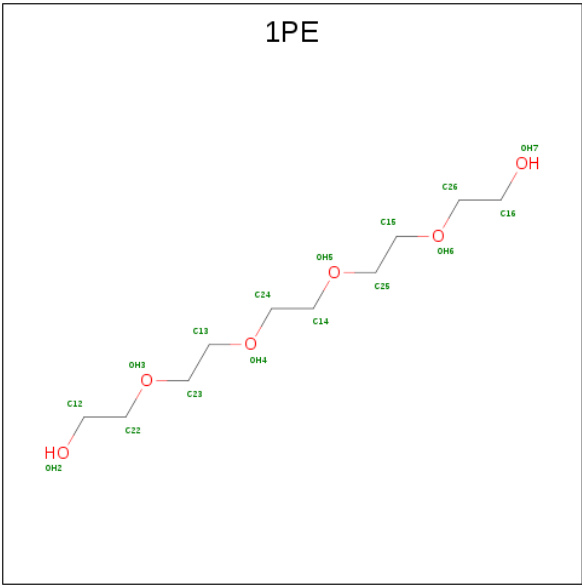
Chain	Residue	Modelled	Actual	Comment	Reference
A	371	LEU	-	expression tag	UNP P72097
A	372	VAL	-	expression tag	UNP P72097
A	373	PRO	-	expression tag	UNP P72097
A	374	ARG	-	expression tag	UNP P72097
A	102	TRP	ARG	variant	UNP P72097
A	129	ALA	SER	variant	UNP P72097
A	168	ILE	GLY	variant	UNP P72097
A	242	ALA	THR	variant	UNP P72097
A	273	ASN	LYS	variant	UNP P72097

- Molecule 2 is CYTIDINE-5'-DIPHOSPHATE (three-letter code: CDP) (formula: C<sub>9</sub>H<sub>15</sub>N<sub>3</sub>O<sub>11</sub>P<sub>2</sub>).



Mol	Chain	Residues	Atoms					ZeroOcc	AltConf
2	A	1	Total	C	N	O	P	0	0
			25	9	3	11	2		

- Molecule 3 is PENTAETHYLENE GLYCOL (three-letter code: 1PE) (formula: C<sub>10</sub>H<sub>22</sub>O<sub>6</sub>).



Mol	Chain	Residues	Atoms			ZeroOcc	AltConf
3	A	1	Total	C	O	0	0
			16	10	6		

- Molecule 4 is SULFATE ION (three-letter code: SO4) (formula: O<sub>4</sub>S).



Mol	Chain	Residues	Atoms			ZeroOcc	AltConf
4	A	1	Total	O	S	0	0
			5	4	1		

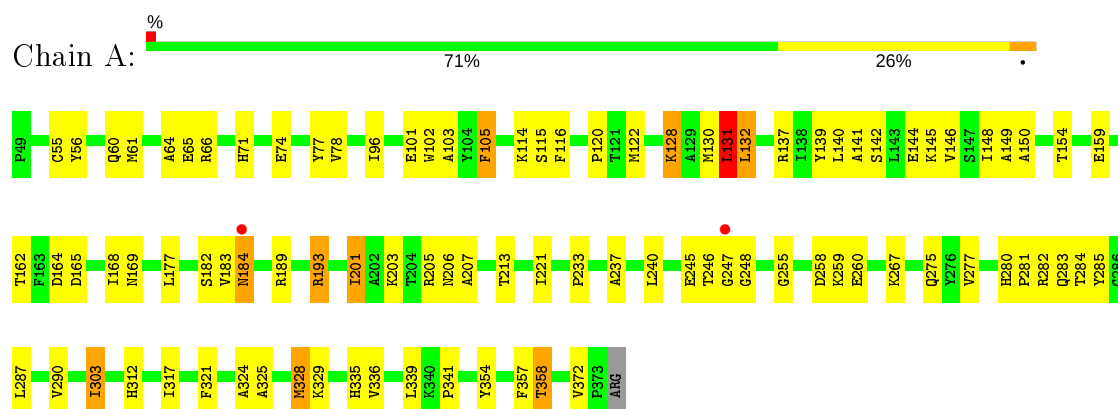
- Molecule 5 is water.

Mol	Chain	Residues	Atoms		ZeroOcc	AltConf
5	A	81	Total	O	0	0
			81	81		

### 3 Residue-property plots

These plots are drawn for all protein, RNA and DNA chains in the entry. The first graphic for a chain summarises the proportions of the various outlier classes displayed in the second graphic. The second graphic shows the sequence view annotated by issues in geometry and electron density. Residues are color-coded according to the number of geometric quality criteria for which they contain at least one outlier: green = 0, yellow = 1, orange = 2 and red = 3 or more. A red dot above a residue indicates a poor fit to the electron density ( $RSRZ > 2$ ). Stretches of 2 or more consecutive residues without any outlier are shown as a green connector. Residues present in the sample, but not in the model, are shown in grey.

- Molecule 1: CMP-N-ACETYLNEURAMINATE-BETA-GALACTOSAMIDE-ALPHA-2,3-SIALYLTRANSFERASE



## 4 Data and refinement statistics

Property	Value	Source
Space group	P 21 21 2	Depositor
Cell constants a, b, c, $\alpha$ , $\beta$ , $\gamma$	86.10Å 123.51Å 41.65Å 90.00° 90.00° 90.00°	Depositor
Resolution (Å)	70.71 – 2.83 32.05 – 2.83	Depositor EDS
% Data completeness (in resolution range)	99.5 (70.71-2.83) 99.7 (32.05-2.83)	Depositor EDS
$R_{merge}$	0.12	Depositor
$R_{sym}$	(Not available)	Depositor
$\langle I/\sigma(I) \rangle$ <sup>1</sup>	2.57 (at 2.81Å)	Xtriage
Refinement program	REFMAC 5.5.0110	Depositor
R, $R_{free}$	0.190 , 0.257 0.180 , 0.238	Depositor DCC
$R_{free}$ test set	532 reflections (4.77%)	wwPDB-VP
Wilson B-factor (Å <sup>2</sup> )	39.9	Xtriage
Anisotropy	0.104	Xtriage
Bulk solvent $k_{sol}$ (e/Å <sup>3</sup> ), $B_{sol}$ (Å <sup>2</sup> )	0.33 , 43.3	EDS
L-test for twinning <sup>2</sup>	$\langle  L  \rangle = 0.49$ , $\langle L^2 \rangle = 0.33$	Xtriage
Estimated twinning fraction	No twinning to report.	Xtriage
$F_o, F_c$ correlation	0.94	EDS
Total number of atoms	2764	wwPDB-VP
Average B, all atoms (Å <sup>2</sup> )	27.0	wwPDB-VP

Xtriage's analysis on translational NCS is as follows: *The largest off-origin peak in the Patterson function is 5.52% of the height of the origin peak. No significant pseudotranslation is detected.*

<sup>1</sup>Intensities estimated from amplitudes.

<sup>2</sup>Theoretical values of  $\langle |L| \rangle$ ,  $\langle L^2 \rangle$  for acentric reflections are 0.5, 0.333 respectively for untwinned datasets, and 0.375, 0.2 for perfectly twinned datasets.

## 5 Model quality [i](#)

### 5.1 Standard geometry [i](#)

Bond lengths and bond angles in the following residue types are not validated in this section: CDP, SO4, 1PE

The Z score for a bond length (or angle) is the number of standard deviations the observed value is removed from the expected value. A bond length (or angle) with  $|Z| > 5$  is considered an outlier worth inspection. RMSZ is the root-mean-square of all Z scores of the bond lengths (or angles).

Mol	Chain	Bond lengths		Bond angles	
		RMSZ	$\# Z  > 5$	RMSZ	$\# Z  > 5$
1	A	0.75	1/2706 (0.0%)	0.80	2/3662 (0.1%)

All (1) bond length outliers are listed below:

Mol	Chain	Res	Type	Atoms	Z	Observed(Å)	Ideal(Å)
1	A	55	CYS	CB-SG	-7.65	1.69	1.82

All (2) bond angle outliers are listed below:

Mol	Chain	Res	Type	Atoms	Z	Observed(°)	Ideal(°)
1	A	303	ILE	CG1-CB-CG2	-5.51	99.28	111.40
1	A	131	LEU	CA-CB-CG	5.29	127.46	115.30

There are no chirality outliers.

There are no planarity outliers.

### 5.2 Too-close contacts [i](#)

In the following table, the Non-H and H(model) columns list the number of non-hydrogen atoms and hydrogen atoms in the chain respectively. The H(added) column lists the number of hydrogen atoms added and optimized by MolProbity. The Clashes column lists the number of clashes within the asymmetric unit, whereas Symm-Clashes lists symmetry related clashes.

Mol	Chain	Non-H	H(model)	H(added)	Clashes	Symm-Clashes
1	A	2637	0	2638	58	1
2	A	25	0	12	2	0
3	A	16	0	22	1	0
4	A	5	0	0	0	0
5	A	81	0	0	2	2

*Continued on next page...*



*Continued from previous page...*

Mol	Chain	Non-H	H(model)	H(added)	Clashes	Symm-Clashes
All	All	2764	0	2672	61	3

The all-atom clashscore is defined as the number of clashes found per 1000 atoms (including hydrogen atoms). The all-atom clashscore for this structure is 11.

All (61) close contacts within the same asymmetric unit are listed below, sorted by their clash magnitude.

Atom-1	Atom-2	Interatomic distance (Å)	Clash overlap (Å)
1:A:280:HIS:HD2	1:A:282:ARG:H	1.17	0.87
1:A:141:ALA:HB3	1:A:144:GLU:HG3	1.58	0.84
1:A:165:ASP:H	1:A:169:ASN:HD21	1.26	0.84
1:A:280:HIS:H	1:A:283:GLN:HE21	1.29	0.81
1:A:280:HIS:H	1:A:283:GLN:NE2	1.84	0.75
1:A:280:HIS:CD2	1:A:282:ARG:H	2.07	0.69
1:A:245:GLU:OE2	1:A:335:HIS:HE1	1.78	0.67
1:A:255:GLY:HA3	1:A:283:GLN:HE22	1.59	0.67
1:A:165:ASP:H	1:A:169:ASN:ND2	1.93	0.65
2:A:1374:CDP:O1B	2:A:1374:CDP:C5'	2.47	0.62
1:A:116:PHE:CZ	1:A:128:LYS:HD2	2.39	0.58
1:A:324:ALA:O	1:A:328:MET:HB2	2.03	0.57
2:A:1374:CDP:O1B	2:A:1374:CDP:O5'	2.23	0.57
1:A:64:ALA:HB3	1:A:96:ILE:HD11	1.88	0.56
1:A:140:LEU:N	1:A:140:LEU:HD23	2.20	0.55
1:A:237:ALA:O	1:A:240:LEU:HB2	2.06	0.55
1:A:137:ARG:HD3	1:A:139:TYR:CZ	2.42	0.54
1:A:56:TYR:H	1:A:60:GLN:NE2	2.05	0.54
1:A:77:TYR:CD1	1:A:102:TRP:HB3	2.43	0.53
1:A:164:ASP:OD2	1:A:213:THR:HA	2.09	0.53
1:A:277:VAL:HG11	1:A:287:LEU:HD23	1.92	0.51
1:A:168:ILE:O	1:A:168:ILE:HG13	2.10	0.51
1:A:140:LEU:O	1:A:162:THR:HA	2.12	0.49
1:A:114:LYS:HB2	1:A:132:LEU:HD11	1.95	0.49
1:A:267:LYS:HE2	1:A:372:VAL:O	2.14	0.48
1:A:61:MET:O	1:A:65:GLU:HG3	2.13	0.48
1:A:339:LEU:O	1:A:341:PRO:HD3	2.14	0.47
1:A:189:ARG:HD2	1:A:193:ARG:HH21	1.80	0.47
1:A:354:TYR:O	1:A:358:THR:HG23	2.15	0.47
1:A:115:SER:O	1:A:128:LYS:NZ	2.48	0.47
1:A:140:LEU:N	1:A:140:LEU:CD2	2.78	0.46
1:A:206:ASN:O	1:A:207:ALA:C	2.53	0.46
1:A:165:ASP:N	1:A:169:ASN:ND2	2.62	0.46

*Continued on next page...*

*Continued from previous page...*

Atom-1	Atom-2	Interatomic distance (Å)	Clash overlap (Å)
1:A:140:LEU:HD23	1:A:140:LEU:H	1.81	0.46
1:A:280:HIS:HD2	1:A:282:ARG:N	1.99	0.46
1:A:71:HIS:HB3	1:A:74:GLU:HG3	1.98	0.46
1:A:280:HIS:HB3	1:A:283:GLN:HB2	1.97	0.45
1:A:203:LYS:HE2	1:A:221:ILE:O	2.16	0.45
1:A:183:VAL:HG12	1:A:184:ASN:H	1.80	0.45
1:A:245:GLU:HA	1:A:312:HIS:O	2.16	0.45
1:A:280:HIS:CD2	1:A:281:PRO:HD2	2.52	0.45
1:A:145:LYS:O	1:A:149:ALA:HB2	2.17	0.45
1:A:78:VAL:HG11	1:A:96:ILE:HG21	1.99	0.44
3:A:1375:1PE:H232	5:A:2010:HOH:O	2.17	0.44
1:A:114:LYS:HE3	1:A:132:LEU:HD21	1.99	0.44
1:A:317:ILE:HG21	1:A:328:MET:HE1	1.98	0.43
1:A:114:LYS:HG2	5:A:2012:HOH:O	2.17	0.43
1:A:131:LEU:HD12	1:A:132:LEU:N	2.34	0.43
1:A:280:HIS:O	1:A:283:GLN:HB3	2.18	0.42
1:A:116:PHE:CD2	1:A:120:PRO:HG3	2.54	0.42
1:A:321:PHE:HA	1:A:357:PHE:CZ	2.55	0.42
1:A:246:THR:O	1:A:248:GLY:N	2.52	0.42
1:A:78:VAL:O	1:A:103:ALA:HA	2.19	0.42
1:A:105:PHE:CD1	1:A:105:PHE:C	2.93	0.42
1:A:259:LYS:HA	1:A:285:TYR:CE1	2.55	0.41
1:A:137:ARG:HA	1:A:159:GLU:O	2.21	0.41
1:A:137:ARG:HD3	1:A:139:TYR:OH	2.21	0.41
1:A:325:ALA:HB1	1:A:336:VAL:HG11	2.02	0.41
1:A:146:VAL:HG22	1:A:201:ILE:HG13	2.01	0.41
1:A:258:ASP:C	1:A:260:GLU:N	2.74	0.41
1:A:150:ALA:O	1:A:154:THR:HG23	2.21	0.40

All (3) symmetry-related close contacts are listed below. The label for Atom-2 includes the symmetry operator and encoded unit-cell translations to be applied.

Atom-1	Atom-2	Interatomic distance (Å)	Clash overlap (Å)
5:A:2004:HOH:O	5:A:2057:HOH:O[3_655]	1.68	0.52
5:A:2003:HOH:O	5:A:2080:HOH:O[3_655]	2.14	0.06
1:A:66:ARG:NH1	1:A:233:PRO:O[2_665]	2.18	0.02

## 5.3 Torsion angles [i](#)

### 5.3.1 Protein backbone [i](#)

In the following table, the Percentiles column shows the percent Ramachandran outliers of the chain as a percentile score with respect to all X-ray entries followed by that with respect to entries of similar resolution.

The Analysed column shows the number of residues for which the backbone conformation was analysed, and the total number of residues.

Mol	Chain	Analysed	Favoured	Allowed	Outliers	Percentiles	
1	A	323/326 (99%)	310 (96%)	12 (4%)	1 (0%)	41	61

All (1) Ramachandran outliers are listed below:

Mol	Chain	Res	Type
1	A	247	GLY

### 5.3.2 Protein sidechains [i](#)

In the following table, the Percentiles column shows the percent sidechain outliers of the chain as a percentile score with respect to all X-ray entries followed by that with respect to entries of similar resolution.

The Analysed column shows the number of residues for which the sidechain conformation was analysed, and the total number of residues.

Mol	Chain	Analysed	Rotameric	Outliers	Percentiles	
1	A	286/287 (100%)	264 (92%)	22 (8%)	13	27

All (22) residues with a non-rotameric sidechain are listed below:

Mol	Chain	Res	Type
1	A	101	GLU
1	A	105	PHE
1	A	122	MET
1	A	128	LYS
1	A	130	MET
1	A	131	LEU
1	A	132	LEU
1	A	142	SER
1	A	148	ILE
1	A	177	LEU

*Continued on next page...*

*Continued from previous page...*

Mol	Chain	Res	Type
1	A	182	SER
1	A	184	ASN
1	A	193	ARG
1	A	201	ILE
1	A	205	ARG
1	A	275	GLN
1	A	284	THR
1	A	290	VAL
1	A	303	ILE
1	A	328	MET
1	A	329	LYS
1	A	358	THR

Some sidechains can be flipped to improve hydrogen bonding and reduce clashes. All (6) such sidechains are listed below:

Mol	Chain	Res	Type
1	A	60	GLN
1	A	169	ASN
1	A	184	ASN
1	A	280	HIS
1	A	283	GLN
1	A	335	HIS

### 5.3.3 RNA ⓘ

There are no RNA molecules in this entry.

## 5.4 Non-standard residues in protein, DNA, RNA chains ⓘ

There are no non-standard protein/DNA/RNA residues in this entry.

## 5.5 Carbohydrates ⓘ

There are no carbohydrates in this entry.

## 5.6 Ligand geometry ⓘ

3 ligands are modelled in this entry.

In the following table, the Counts columns list the number of bonds (or angles) for which Mogul statistics could be retrieved, the number of bonds (or angles) that are observed in the model and the number of bonds (or angles) that are defined in the Chemical Component Dictionary. The Link column lists molecule types, if any, to which the group is linked. The Z score for a bond length (or angle) is the number of standard deviations the observed value is removed from the expected value. A bond length (or angle) with  $|Z| > 2$  is considered an outlier worth inspection. RMSZ is the root-mean-square of all Z scores of the bond lengths (or angles).

Mol	Type	Chain	Res	Link	Bond lengths			Bond angles		
					Counts	RMSZ	$\# Z  > 2$	Counts	RMSZ	$\# Z  > 2$
4	SO4	A	1376	-	4,4,4	0.17	0	6,6,6	0.33	0
3	1PE	A	1375	-	15,15,15	0.73	0	14,14,14	1.34	1 (7%)
2	CDP	A	1374	-	21,26,26	1.95	7 (33%)	28,40,40	2.04	7 (25%)

In the following table, the Chirals column lists the number of chiral outliers, the number of chiral centers analysed, the number of these observed in the model and the number defined in the Chemical Component Dictionary. Similar counts are reported in the Torsion and Rings columns. '-' means no outliers of that kind were identified.

Mol	Type	Chain	Res	Link	Chirals	Torsions	Rings
3	1PE	A	1375	-	-	9/13/13/13	-
2	CDP	A	1374	-	-	4/14/32/32	0/2/2/2

All (7) bond length outliers are listed below:

Mol	Chain	Res	Type	Atoms	Z	Observed(Å)	Ideal(Å)
2	A	1374	CDP	PA-O1A	3.71	1.64	1.50
2	A	1374	CDP	C2'-C1'	-3.48	1.48	1.53
2	A	1374	CDP	C6-N1	3.14	1.39	1.35
2	A	1374	CDP	PA-O5'	3.13	1.72	1.59
2	A	1374	CDP	C5'-C4'	2.65	1.59	1.51
2	A	1374	CDP	O5'-C5'	2.65	1.55	1.44
2	A	1374	CDP	PB-O3B	2.57	1.64	1.54

All (8) bond angle outliers are listed below:

Mol	Chain	Res	Type	Atoms	Z	Observed(°)	Ideal(°)
2	A	1374	CDP	C2-N3-C4	5.86	122.28	116.34
2	A	1374	CDP	PA-O3A-PB	-4.88	116.10	132.83
2	A	1374	CDP	O2B-PB-O3A	3.33	115.81	104.64
2	A	1374	CDP	N4-C4-N3	2.88	121.04	116.49
3	A	1375	1PE	OH4-C24-C14	-2.46	99.31	110.39
2	A	1374	CDP	O5'-C5'-C4'	2.30	116.90	108.99

*Continued on next page...*

*Continued from previous page...*

Mol	Chain	Res	Type	Atoms	Z	Observed(°)	Ideal(°)
2	A	1374	CDP	C5-C4-N3	-2.11	119.29	121.72
2	A	1374	CDP	O2'-C2'-C1'	-2.08	103.18	110.85

There are no chirality outliers.

All (13) torsion outliers are listed below:

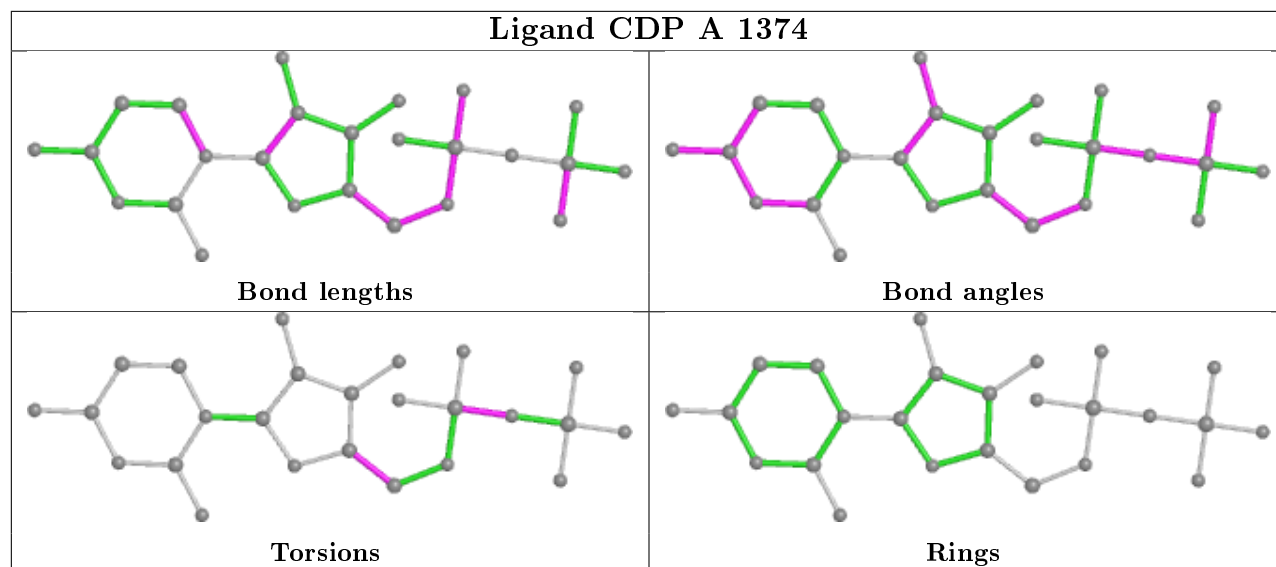
Mol	Chain	Res	Type	Atoms
2	A	1374	CDP	O4'-C4'-C5'-O5'
2	A	1374	CDP	C3'-C4'-C5'-O5'
3	A	1375	1PE	OH2-C12-C22-OH3
2	A	1374	CDP	PB-O3A-PA-O1A
2	A	1374	CDP	PB-O3A-PA-O5'
3	A	1375	1PE	C14-C24-OH4-C13
3	A	1375	1PE	C23-C13-OH4-C24
3	A	1375	1PE	OH4-C13-C23-OH3
3	A	1375	1PE	C12-C22-OH3-C23
3	A	1375	1PE	C15-C25-OH5-C14
3	A	1375	1PE	OH6-C15-C25-OH5
3	A	1375	1PE	OH5-C14-C24-OH4
3	A	1375	1PE	C16-C26-OH6-C15

There are no ring outliers.

2 monomers are involved in 3 short contacts:

Mol	Chain	Res	Type	Clashes	Symm-Clashes
3	A	1375	1PE	1	0
2	A	1374	CDP	2	0

The following is a two-dimensional graphical depiction of Mogul quality analysis of bond lengths, bond angles, torsion angles, and ring geometry for all instances of the Ligand of Interest. In addition, ligands with molecular weight > 250 and outliers as shown on the validation Tables will also be included. For torsion angles, if less than 5% of the Mogul distribution of torsion angles is within 10 degrees of the torsion angle in question, then that torsion angle is considered an outlier. Any bond that is central to one or more torsion angles identified as an outlier by Mogul will be highlighted in the graph. For rings, the root-mean-square deviation (RMSD) between the ring in question and similar rings identified by Mogul is calculated over all ring torsion angles. If the average RMSD is greater than 60 degrees and the minimal RMSD between the ring in question and any Mogul-identified rings is also greater than 60 degrees, then that ring is considered an outlier. The outliers are highlighted in purple. The color gray indicates Mogul did not find sufficient equivalents in the CSD to analyse the geometry.



## 5.7 Other polymers [i](#)

There are no such residues in this entry.

## 5.8 Polymer linkage issues [i](#)

There are no chain breaks in this entry.

## 6 Fit of model and data [i](#)

### 6.1 Protein, DNA and RNA chains [i](#)

In the following table, the column labelled ‘#RSRZ> 2’ contains the number (and percentage) of RSRZ outliers, followed by percent RSRZ outliers for the chain as percentile scores relative to all X-ray entries and entries of similar resolution. The OWAB column contains the minimum, median, 95<sup>th</sup> percentile and maximum values of the occupancy-weighted average B-factor per residue. The column labelled ‘Q< 0.9’ lists the number of (and percentage) of residues with an average occupancy less than 0.9.

Mol	Chain	Analysed	<RSRZ>	#RSRZ>2	OWAB(Å <sup>2</sup> )	Q<0.9
1	A	325/326 (99%)	-0.44	2 (0%) 89 88	12, 26, 46, 52	23 (7%)

All (2) RSRZ outliers are listed below:

Mol	Chain	Res	Type	RSRZ
1	A	247	GLY	2.5
1	A	184	ASN	2.3

### 6.2 Non-standard residues in protein, DNA, RNA chains [i](#)

There are no non-standard protein/DNA/RNA residues in this entry.

### 6.3 Carbohydrates [i](#)

There are no carbohydrates in this entry.

### 6.4 Ligands [i](#)

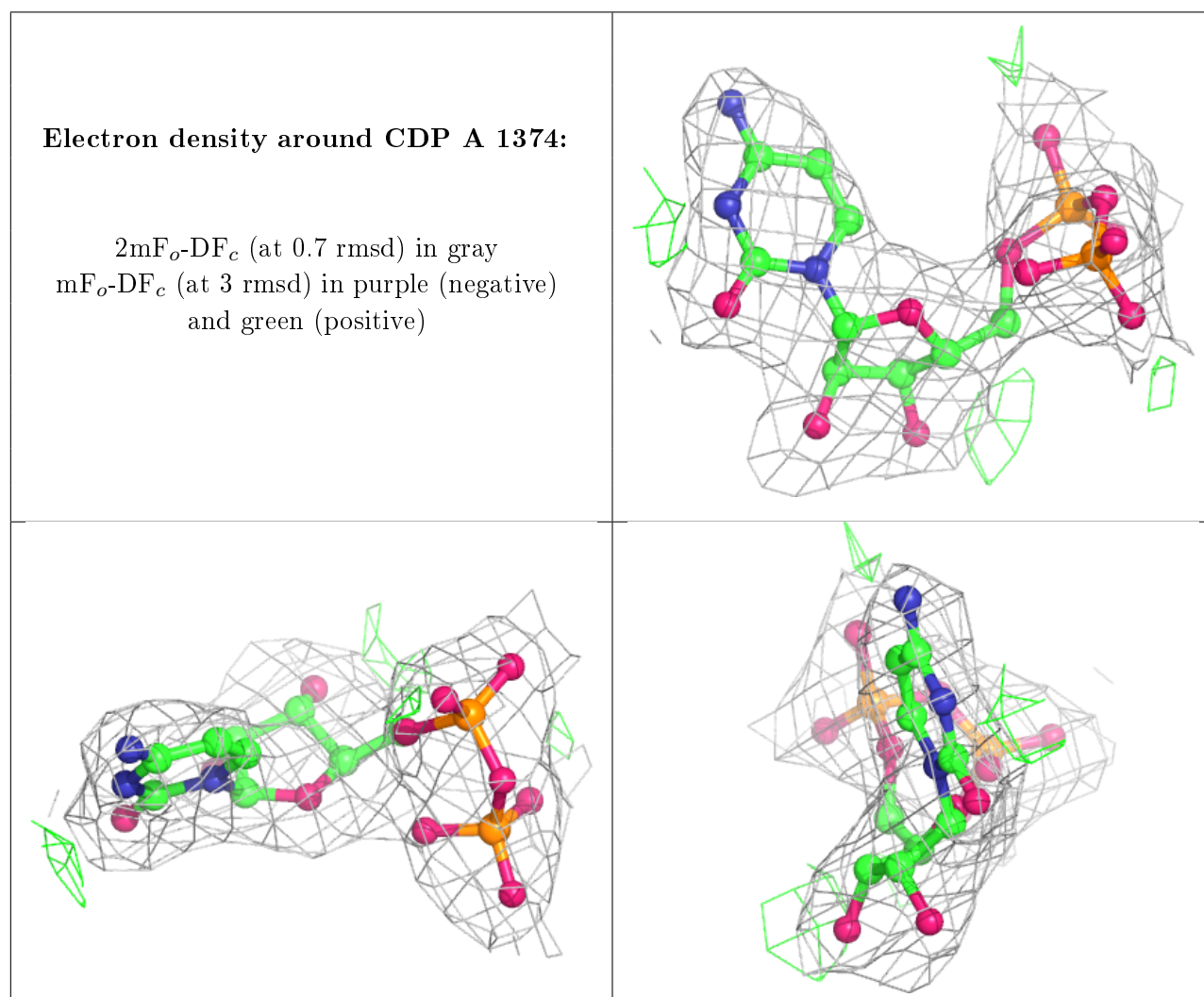
In the following table, the Atoms column lists the number of modelled atoms in the group and the number defined in the chemical component dictionary. The B-factors column lists the minimum, median, 95<sup>th</sup> percentile and maximum values of B factors of atoms in the group. The column labelled ‘Q< 0.9’ lists the number of atoms with occupancy less than 0.9.

Mol	Type	Chain	Res	Atoms	RSCC	RSR	B-factors(Å <sup>2</sup> )	Q<0.9
4	SO4	A	1376	5/5	0.95	0.17	79,80,81,81	0
2	CDP	A	1374	25/25	0.96	0.22	16,19,37,38	0
3	1PE	A	1375	16/16	0.97	0.18	16,19,35,36	0

The following is a graphical depiction of the model fit to experimental electron density of all instances of the Ligand of Interest. In addition, ligands with molecular weight > 250 and outliers



as shown on the geometry validation Tables will also be included. Each fit is shown from different orientation to approximate a three-dimensional view.



## 6.5 Other polymers [i](#)

There are no such residues in this entry.