



wwPDB X-ray Structure Validation Summary Report ⓘ

Aug 7, 2020 – 11:29 PM BST

PDB ID : 4YK4
Title : Human antibody 641 I-9 in complex with influenza hemagglutinin H1 Solomon Islands/03/2006
Authors : Schmidt, A.G.; Harrison, S.C.
Deposited on : 2015-03-03
Resolution : 2.80 Å(reported)

This is a wwPDB X-ray Structure Validation Summary Report for a publicly released PDB entry.

We welcome your comments at validation@mail.wwpdb.org

A user guide is available at

<https://www.wwpdb.org/validation/2017/XrayValidationReportHelp>

with specific help available everywhere you see the ⓘ symbol.

The following versions of software and data (see [references ⓘ](#)) were used in the production of this report:

MolProbity : 4.02b-467
Mogul : 1.8.5 (274361), CSD as541be (2020)
Xtriage (Phenix) : 1.13
EDS : 2.13.1
Percentile statistics : 20191225.v01 (using entries in the PDB archive December 25th 2019)
Refmac : 5.8.0158
CCP4 : 7.0.044 (Gargrove)
Ideal geometry (proteins) : Engh & Huber (2001)
Ideal geometry (DNA, RNA) : Parkinson et al. (1996)
Validation Pipeline (wwPDB-VP) : 2.13.1

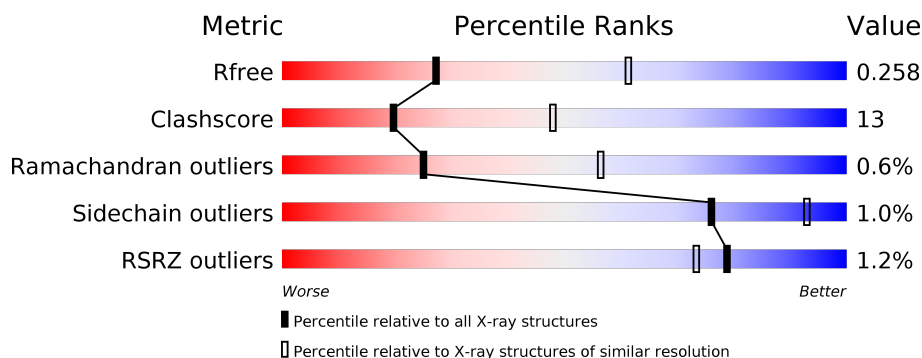
1 Overall quality at a glance

The following experimental techniques were used to determine the structure:

X-RAY DIFFRACTION

The reported resolution of this entry is 2.80 Å.

Percentile scores (ranging between 0-100) for global validation metrics of the entry are shown in the following graphic. The table shows the number of entries on which the scores are based.



Metric	Whole archive (#Entries)	Similar resolution (#Entries, resolution range(Å))
R_{free}	130704	3140 (2.80-2.80)
Clashscore	141614	3569 (2.80-2.80)
Ramachandran outliers	138981	3498 (2.80-2.80)
Sidechain outliers	138945	3500 (2.80-2.80)
RSRZ outliers	127900	3078 (2.80-2.80)

The table below summarises the geometric issues observed across the polymeric chains and their fit to the electron density. The red, orange, yellow and green segments on the lower bar indicate the fraction of residues that contain outliers for ≥ 3 , 2, 1 and 0 types of geometric quality criteria respectively. A grey segment represents the fraction of residues that are not modelled. The numeric value for each fraction is indicated below the corresponding segment, with a dot representing fractions $\leq 5\%$. The upper red bar (where present) indicates the fraction of residues that have poor fit to the electron density. The numeric value is given above the bar.

Mol	Chain	Length	Quality of chain
1	B	214	<div> <div>86%</div> <div>12%</div> <div>•</div> </div>
1	Y	214	<div> <div>84%</div> <div>14%</div> <div>•</div> </div>
2	C	236	<div> <div>78%</div> <div>15%</div> <div>7%</div> </div>
2	Z	236	<div> <div>78%</div> <div>16%</div> <div>6%</div> </div>
3	A	230	<div> <div>2%</div> <div>60%</div> <div>27%</div> <div>•</div> <div>10%</div> </div>
3	E	230	<div> <div>3%</div> <div>65%</div> <div>21%</div> <div>•</div> <div>10%</div> </div>

The following table lists non-polymeric compounds, carbohydrate monomers and non-standard residues in protein, DNA, RNA chains that are outliers for geometric or electron-density-fit criteria:

Mol	Type	Chain	Res	Chirality	Geometry	Clashes	Electron density
4	NAG	A	301	X	-	-	-
4	NAG	E	301	X	-	-	-

2 Entry composition [i](#)

There are 5 unique types of molecules in this entry. The entry contains 10127 atoms, of which 0 are hydrogens and 0 are deuteriums.

In the tables below, the ZeroOcc column contains the number of atoms modelled with zero occupancy, the AltConf column contains the number of residues with at least one atom in alternate conformation and the Trace column contains the number of residues modelled with at most 2 atoms.

- Molecule 1 is a protein called 641 I-9 VLCL antibody.

Mol	Chain	Residues	Atoms					ZeroOcc	AltConf	Trace
1	Y	211	Total	C	N	O	S	0	0	0
			1621	1014	272	330	5			
1	B	211	Total	C	N	O	S	0	0	0
			1621	1014	272	330	5			

- Molecule 2 is a protein called 641 I-9 VHCH antibody.

Mol	Chain	Residues	Atoms					ZeroOcc	AltConf	Trace
2	Z	223	Total	C	N	O	S	0	0	0
			1691	1074	277	335	5			
2	C	220	Total	C	N	O	S	0	0	0
			1670	1062	273	330	5			

- Molecule 3 is a protein called Hemagglutinin.

Mol	Chain	Residues	Atoms					ZeroOcc	AltConf	Trace
3	E	206	Total	C	N	O	S	0	0	0
			1658	1057	283	314	4			
3	A	206	Total	C	N	O	S	0	0	0
			1658	1057	283	314	4			

There are 30 discrepancies between the modelled and reference sequences:

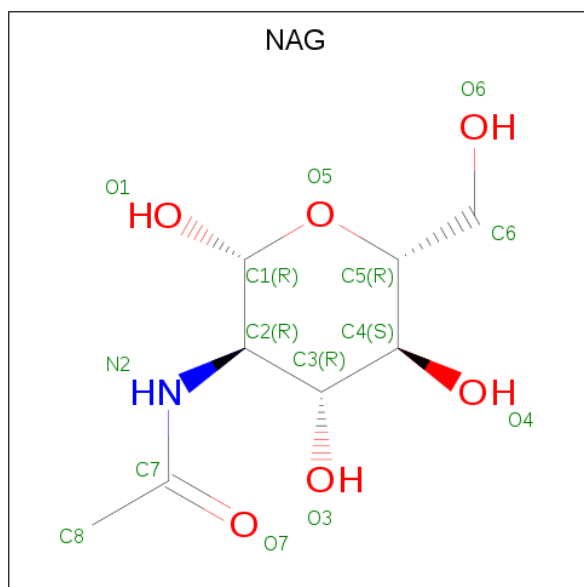
Chain	Residue	Modelled	Actual	Comment	Reference
E	44	ALA	-	expression tag	UNP A7UPX0
E	45	ASP	-	expression tag	UNP A7UPX0
E	46	PRO	-	expression tag	UNP A7UPX0
E	47	GLY	-	expression tag	UNP A7UPX0
E	48	TYR	-	expression tag	UNP A7UPX0
E	49	LEU	-	expression tag	UNP A7UPX0
E	50	LEU	-	expression tag	UNP A7UPX0
E	51	GLU	-	expression tag	UNP A7UPX0

Continued on next page...

Continued from previous page...

Chain	Residue	Modelled	Actual	Comment	Reference
E	226	GLN	ARG	conflict	UNP A7UPX0
E	268	LEU	-	expression tag	UNP A7UPX0
E	269	GLU	-	expression tag	UNP A7UPX0
E	270	VAL	-	expression tag	UNP A7UPX0
E	271	LEU	-	expression tag	UNP A7UPX0
E	272	PHE	-	expression tag	UNP A7UPX0
E	273	GLN	-	expression tag	UNP A7UPX0
A	44	ALA	-	expression tag	UNP A7UPX0
A	45	ASP	-	expression tag	UNP A7UPX0
A	46	PRO	-	expression tag	UNP A7UPX0
A	47	GLY	-	expression tag	UNP A7UPX0
A	48	TYR	-	expression tag	UNP A7UPX0
A	49	LEU	-	expression tag	UNP A7UPX0
A	50	LEU	-	expression tag	UNP A7UPX0
A	51	GLU	-	expression tag	UNP A7UPX0
A	226	GLN	ARG	conflict	UNP A7UPX0
A	268	LEU	-	expression tag	UNP A7UPX0
A	269	GLU	-	expression tag	UNP A7UPX0
A	270	VAL	-	expression tag	UNP A7UPX0
A	271	LEU	-	expression tag	UNP A7UPX0
A	272	PHE	-	expression tag	UNP A7UPX0
A	273	GLN	-	expression tag	UNP A7UPX0

- Molecule 4 is 2-acetamido-2-deoxy-beta-D-glucopyranose (three-letter code: NAG) (formula: $C_8H_{15}NO_6$).



Mol	Chain	Residues	Atoms				ZeroOcc	AltConf
4	E	1	Total	C	N	O	0	0
			14	8	1	5		
4	E	1	Total	C	N	O	0	0
			14	8	1	5		
4	E	1	Total	C	N	O	0	0
			14	8	1	5		
4	A	1	Total	C	N	O	0	0
			14	8	1	5		
4	A	1	Total	C	N	O	0	0
			14	8	1	5		
4	A	1	Total	C	N	O	0	0
			14	8	1	5		


- Molecule 5 is water.

Mol	Chain	Residues	Atoms		ZeroOcc	AltConf
5	Y	37	Total	O	0	0
			37	37		
5	Z	19	Total	O	0	0
			19	19		
5	E	12	Total	O	0	0
			12	12		
5	B	28	Total	O	0	0
			28	28		
5	C	21	Total	O	0	0
			21	21		
5	A	7	Total	O	0	0
			7	7		

3 Residue-property plots


These plots are drawn for all protein, RNA, DNA and oligosaccharide chains in the entry. The first graphic for a chain summarises the proportions of the various outlier classes displayed in the second graphic. The second graphic shows the sequence view annotated by issues in geometry and electron density. Residues are color-coded according to the number of geometric quality criteria for which they contain at least one outlier: green = 0, yellow = 1, orange = 2 and red = 3 or more. A red dot above a residue indicates a poor fit to the electron density ($RSRZ > 2$). Stretches of 2 or more consecutive residues without any outlier are shown as a green connector. Residues present in the sample, but not in the model, are shown in grey.

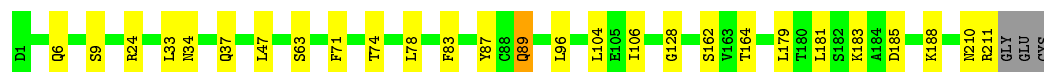
- Molecule 1: 641 I-9 VLCL antibody

Chain Y: 




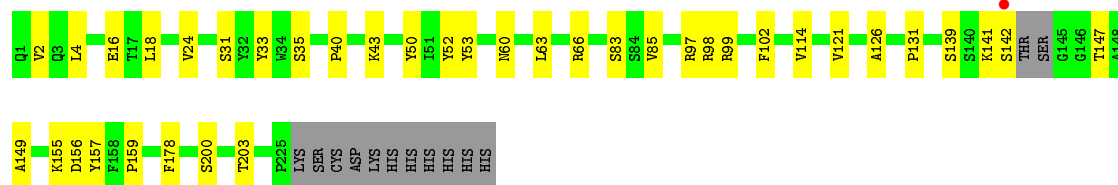
- Molecule 1: 641 I-9 VLCL antibody

Chain B: 



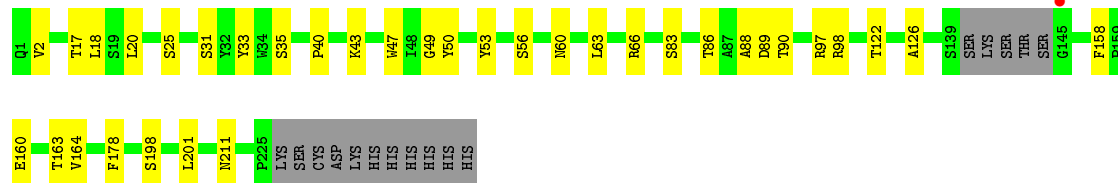
- Molecule 2: 641 I-9 VHCH antibody

Chain Z: 



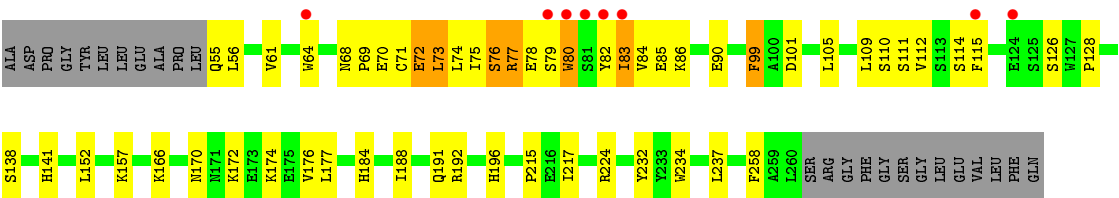
- Molecule 2: 641 I-9 VHCH antibody

Chain C: 

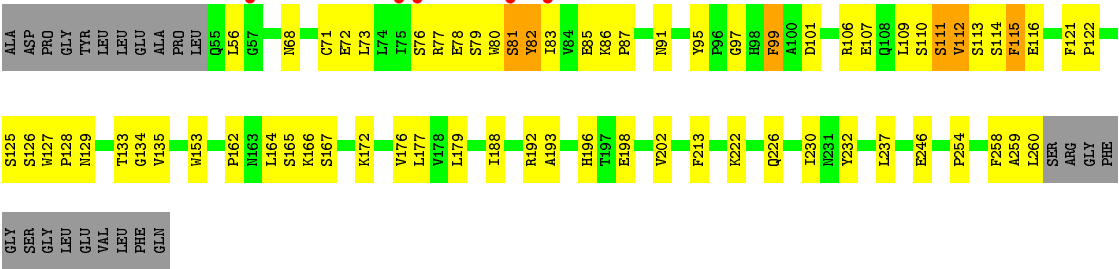


- Molecule 3: Hemagglutinin

Chain E: 



• Molecule 3: Hemagglutinin



4 Data and refinement statistics

Property	Value	Source
Space group	C 1 2 1	Depositor
Cell constants a, b, c, α , β , γ	235.37Å 130.15Å 68.97Å 90.00° 105.88° 90.00°	Depositor
Resolution (Å)	35.04 – 2.80 35.04 – 2.75	Depositor EDS
% Data completeness (in resolution range)	95.8 (35.04-2.80) 88.3 (35.04-2.75)	Depositor EDS
R_{merge}	0.11	Depositor
R_{sym}	(Not available)	Depositor
$\langle I/\sigma(I) \rangle$ ¹	1.66 (at 2.76Å)	Xtriage
Refinement program	PHENIX	Depositor
R, R_{free}	0.220 , 0.260 0.222 , 0.258	Depositor DCC
R_{free} test set	2003 reflections (4.17%)	wwPDB-VP
Wilson B-factor (Å ²)	54.3	Xtriage
Anisotropy	0.390	Xtriage
Bulk solvent k_{sol} (e/Å ³), B_{sol} (Å ²)	0.30 , 23.7	EDS
L-test for twinning ²	$\langle L \rangle = 0.49$, $\langle L^2 \rangle = 0.33$	Xtriage
Estimated twinning fraction	0.109 for -h-2*k,l	Xtriage
F_o, F_c correlation	0.92	EDS
Total number of atoms	10127	wwPDB-VP
Average B, all atoms (Å ²)	63.0	wwPDB-VP

Xtriage's analysis on translational NCS is as follows: *The largest off-origin peak in the Patterson function is 4.43% of the height of the origin peak. No significant pseudotranslation is detected.*

¹Intensities estimated from amplitudes.

²Theoretical values of $\langle |L| \rangle$, $\langle L^2 \rangle$ for acentric reflections are 0.5, 0.333 respectively for untwinned datasets, and 0.375, 0.2 for perfectly twinned datasets.

5 Model quality [i](#)

5.1 Standard geometry [i](#)

Bond lengths and bond angles in the following residue types are not validated in this section:
NAG

The Z score for a bond length (or angle) is the number of standard deviations the observed value is removed from the expected value. A bond length (or angle) with $|Z| > 5$ is considered an outlier worth inspection. RMSZ is the root-mean-square of all Z scores of the bond lengths (or angles).

Mol	Chain	Bond lengths		Bond angles	
		RMSZ	$\# Z > 5$	RMSZ	$\# Z > 5$
1	B	0.31	0/1655	0.52	0/2247
1	Y	0.31	0/1655	0.51	0/2247
2	C	0.29	0/1714	0.52	0/2342
2	Z	0.32	0/1735	0.53	0/2369
3	A	0.35	0/1709	0.53	0/2327
3	E	0.34	0/1709	0.56	1/2327 (0.0%)
All	All	0.32	0/10177	0.53	1/13859 (0.0%)

There are no bond length outliers.

All (1) bond angle outliers are listed below:

Mol	Chain	Res	Type	Atoms	Z	Observed(°)	Ideal(°)
3	E	80	TRP	N-CA-C	-7.60	90.48	111.00

There are no chirality outliers.

There are no planarity outliers.

5.2 Too-close contacts [i](#)

In the following table, the Non-H and H(model) columns list the number of non-hydrogen atoms and hydrogen atoms in the chain respectively. The H(added) column lists the number of hydrogen atoms added and optimized by MolProbity. The Clashes column lists the number of clashes within the asymmetric unit, whereas Symm-Clashes lists symmetry related clashes.

Mol	Chain	Non-H	H(model)	H(added)	Clashes	Symm-Clashes
1	B	1621	0	1584	19	0
1	Y	1621	0	1584	20	0
2	C	1670	0	1633	29	0
2	Z	1691	0	1656	24	0

Continued on next page...

Continued from previous page...

Mol	Chain	Non-H	H(model)	H(added)	Clashes	Symm-Clashes
3	A	1658	0	1568	83	1
3	E	1658	0	1567	76	0
4	A	42	0	39	5	0
4	E	42	0	39	7	0
5	A	7	0	0	4	0
5	B	28	0	0	4	0
5	C	21	0	0	8	0
5	E	12	0	0	3	0
5	Y	37	0	0	5	0
5	Z	19	0	0	4	0
All	All	10127	0	9670	249	1

The all-atom clashscore is defined as the number of clashes found per 1000 atoms (including hydrogen atoms). The all-atom clashscore for this structure is 13.

The worst 5 of 249 close contacts within the same asymmetric unit are listed below, sorted by their clash magnitude.

Atom-1	Atom-2	Interatomic distance (Å)	Clash overlap (Å)
3:A:80:TRP:CE2	3:A:112:VAL:HG11	1.52	1.45
3:A:80:TRP:CD2	3:A:112:VAL:HG11	1.67	1.30
3:A:78:GLU:O	3:A:114:SER:HA	1.31	1.21
3:A:76:SER:O	3:A:77:ARG:HG3	1.41	1.20
3:A:79:SER:HB3	3:A:113:SER:O	1.46	1.12

All (1) symmetry-related close contacts are listed below. The label for Atom-2 includes the symmetry operator and encoded unit-cell translations to be applied.

Atom-1	Atom-2	Interatomic distance (Å)	Clash overlap (Å)
3:A:81:SER:OG	3:A:81:SER:OG[2_555]	1.93	0.27

5.3 Torsion angles [i](#)

5.3.1 Protein backbone [i](#)

In the following table, the Percentiles column shows the percent Ramachandran outliers of the chain as a percentile score with respect to all X-ray entries followed by that with respect to entries of similar resolution.

The Analysed column shows the number of residues for which the backbone conformation was analysed, and the total number of residues.

Mol	Chain	Analysed	Favoured	Allowed	Outliers	Percentiles	
1	B	209/214 (98%)	200 (96%)	8 (4%)	1 (0%)	29	61
1	Y	209/214 (98%)	200 (96%)	8 (4%)	1 (0%)	29	61
2	C	216/236 (92%)	207 (96%)	9 (4%)	0	100	100
2	Z	219/236 (93%)	206 (94%)	13 (6%)	0	100	100
3	A	204/230 (89%)	181 (89%)	19 (9%)	4 (2%)	7	24
3	E	204/230 (89%)	187 (92%)	15 (7%)	2 (1%)	15	44
All	All	1261/1360 (93%)	1181 (94%)	72 (6%)	8 (1%)	25	56

5 of 8 Ramachandran outliers are listed below:

Mol	Chain	Res	Type
3	E	77	ARG
3	A	111	SER
3	A	112	VAL
3	A	125	SER
1	Y	96	LEU

5.3.2 Protein sidechains ⓘ

In the following table, the Percentiles column shows the percent sidechain outliers of the chain as a percentile score with respect to all X-ray entries followed by that with respect to entries of similar resolution.

The Analysed column shows the number of residues for which the sidechain conformation was analysed, and the total number of residues.

Mol	Chain	Analysed	Rotameric	Outliers	Percentiles	
1	B	187/189 (99%)	186 (100%)	1 (0%)	88	96
1	Y	187/189 (99%)	187 (100%)	0	100	100
2	C	192/208 (92%)	192 (100%)	0	100	100
2	Z	195/208 (94%)	195 (100%)	0	100	100
3	A	181/199 (91%)	176 (97%)	5 (3%)	43	77
3	E	181/199 (91%)	176 (97%)	5 (3%)	43	77
All	All	1123/1192 (94%)	1112 (99%)	11 (1%)	76	93

5 of 11 residues with a non-rotameric sidechain are listed below:

Mol	Chain	Res	Type
3	E	101	ASP

Continued on next page...

Continued from previous page...

Mol	Chain	Res	Type
1	B	89	GLN
3	A	101	ASP
3	E	99	PHE
3	A	99	PHE

Some sidechains can be flipped to improve hydrogen bonding and reduce clashes. All (2) such sidechains are listed below:

Mol	Chain	Res	Type
1	Y	147	GLN
1	B	34	ASN

5.3.3 RNA [i](#)

There are no RNA molecules in this entry.

5.4 Non-standard residues in protein, DNA, RNA chains [i](#)

There are no non-standard protein/DNA/RNA residues in this entry.

5.5 Carbohydrates [i](#)

There are no monosaccharides in this entry.

5.6 Ligand geometry [i](#)

6 ligands are modelled in this entry.

In the following table, the Counts columns list the number of bonds (or angles) for which Mogul statistics could be retrieved, the number of bonds (or angles) that are observed in the model and the number of bonds (or angles) that are defined in the Chemical Component Dictionary. The Link column lists molecule types, if any, to which the group is linked. The Z score for a bond length (or angle) is the number of standard deviations the observed value is removed from the expected value. A bond length (or angle) with $|Z| > 2$ is considered an outlier worth inspection. RMSZ is the root-mean-square of all Z scores of the bond lengths (or angles).

Mol	Type	Chain	Res	Link	Bond lengths			Bond angles		
					Counts	RMSZ	$\# Z > 2$	Counts	RMSZ	$\# Z > 2$
4	NAG	A	303	3	14,14,15	0.30	0	17,19,21	0.61	0
4	NAG	E	303	3	14,14,15	0.30	0	17,19,21	0.61	0
4	NAG	E	302	3	14,14,15	0.29	0	17,19,21	0.62	0

Mol	Type	Chain	Res	Link	Bond lengths			Bond angles		
					Counts	RMSZ	# Z > 2	Counts	RMSZ	# Z > 2
4	NAG	A	301	3	14,14,15	0.36	0	17,19,21	0.73	0
4	NAG	E	301	3	14,14,15	0.52	0	17,19,21	1.76	4 (23%)
4	NAG	A	302	3	14,14,15	0.79	0	17,19,21	1.23	1 (5%)

In the following table, the Chirals column lists the number of chiral outliers, the number of chiral centers analysed, the number of these observed in the model and the number defined in the Chemical Component Dictionary. Similar counts are reported in the Torsion and Rings columns. '-' means no outliers of that kind were identified.

Mol	Type	Chain	Res	Link	Chirals	Torsions	Rings
4	NAG	A	303	3	-	3/6/23/26	0/1/1/1
4	NAG	E	303	3	-	3/6/23/26	0/1/1/1
4	NAG	E	302	3	-	6/6/23/26	0/1/1/1
4	NAG	A	301	3	1/1/5/7	6/6/23/26	0/1/1/1
4	NAG	E	301	3	1/1/5/7	2/6/23/26	0/1/1/1
4	NAG	A	302	3	-	5/6/23/26	0/1/1/1

There are no bond length outliers.

All (5) bond angle outliers are listed below:

Mol	Chain	Res	Type	Atoms	Z	Observed(°)	Ideal(°)
4	E	301	NAG	C1-O5-C5	4.77	118.65	112.19
4	A	302	NAG	O5-C1-C2	-2.52	107.31	111.29
4	E	301	NAG	C2-N2-C7	-2.52	119.32	122.90
4	E	301	NAG	C1-C2-N2	-2.12	106.86	110.49
4	E	301	NAG	C3-C4-C5	-2.02	106.63	110.24

All (2) chirality outliers are listed below:

Mol	Chain	Res	Type	Atom
4	A	301	NAG	C1
4	E	301	NAG	C1

5 of 25 torsion outliers are listed below:

Mol	Chain	Res	Type	Atoms
4	A	303	NAG	C8-C7-N2-C2
4	A	303	NAG	O7-C7-N2-C2
4	E	303	NAG	C8-C7-N2-C2
4	E	303	NAG	O7-C7-N2-C2

Continued on next page...

Continued from previous page...

Mol	Chain	Res	Type	Atoms
4	E	302	NAG	C1-C2-N2-C7

There are no ring outliers.

4 monomers are involved in 12 short contacts:

Mol	Chain	Res	Type	Clashes	Symm-Clashes
4	A	303	NAG	1	0
4	E	302	NAG	6	0
4	E	301	NAG	1	0
4	A	302	NAG	4	0

5.7 Other polymers [i](#)

There are no such residues in this entry.

5.8 Polymer linkage issues [i](#)

There are no chain breaks in this entry.

6 Fit of model and data ⓘ

6.1 Protein, DNA and RNA chains ⓘ

In the following table, the column labelled ‘#RSRZ> 2’ contains the number (and percentage) of RSRZ outliers, followed by percent RSRZ outliers for the chain as percentile scores relative to all X-ray entries and entries of similar resolution. The OWAB column contains the minimum, median, 95th percentile and maximum values of the occupancy-weighted average B-factor per residue. The column labelled ‘Q< 0.9’ lists the number of (and percentage) of residues with an average occupancy less than 0.9.

Mol	Chain	Analysed	<RSRZ>	#RSRZ>2	OWAB(Å ²)	Q<0.9
1	B	211/214 (98%)	-0.27	0 100 100	33, 50, 74, 124	0
1	Y	211/214 (98%)	-0.35	0 100 100	32, 49, 68, 104	0
2	C	220/236 (93%)	-0.32	1 (0%) 91 88	35, 55, 84, 124	0
2	Z	223/236 (94%)	-0.31	1 (0%) 92 91	31, 54, 84, 164	0
3	A	206/230 (89%)	-0.10	5 (2%) 59 49	38, 74, 142, 193	0
3	E	206/230 (89%)	-0.16	8 (3%) 39 29	41, 69, 133, 219	0
All	All	1277/1360 (93%)	-0.25	15 (1%) 79 73	31, 56, 109, 219	0

The worst 5 of 15 RSRZ outliers are listed below:

Mol	Chain	Res	Type	RSRZ
3	A	76	SER	4.6
3	E	81	SER	4.0
3	E	115	PHE	3.1
3	E	83	ILE	3.0
3	E	80	TRP	2.7

6.2 Non-standard residues in protein, DNA, RNA chains ⓘ

There are no non-standard protein/DNA/RNA residues in this entry.

6.3 Carbohydrates ⓘ

There are no monosaccharides in this entry.

6.4 Ligands [i](#)

In the following table, the Atoms column lists the number of modelled atoms in the group and the number defined in the chemical component dictionary. The B-factors column lists the minimum, median, 95th percentile and maximum values of B factors of atoms in the group. The column labelled 'Q< 0.9' lists the number of atoms with occupancy less than 0.9.

Mol	Type	Chain	Res	Atoms	RSCC	RSR	B-factors(Å ²)	Q<0.9
4	NAG	A	303	14/15	0.68	0.37	167,167,167,167	0
4	NAG	E	301	14/15	0.72	0.27	145,145,145,145	0
4	NAG	A	301	14/15	0.79	0.33	159,159,159,159	0
4	NAG	E	302	14/15	0.79	0.38	146,146,146,146	0
4	NAG	A	302	14/15	0.80	0.28	119,119,119,119	0
4	NAG	E	303	14/15	0.81	0.28	151,151,151,151	0

6.5 Other polymers [i](#)

There are no such residues in this entry.