



# Full wwPDB X-ray Structure Validation Report ⓘ

Aug 6, 2020 – 10:54 PM BST

PDB ID : 4YLZ  
Title : Crystal structure of the human galectin-4 C-terminal carbohydrate recognition domain in complex with lacto-N-neotetraose (LNnT)  
Authors : Bum-Erdene, K.; Blanchard, H.  
Deposited on : 2015-03-06  
Resolution : 2.10 Å(reported)

This is a Full wwPDB X-ray Structure Validation Report for a publicly released PDB entry.

We welcome your comments at [validation@mail.wwpdb.org](mailto:validation@mail.wwpdb.org)

A user guide is available at

<https://www.wwpdb.org/validation/2017/XrayValidationReportHelp>

with specific help available everywhere you see the ⓘ symbol.

---

The following versions of software and data (see [references ⓘ](#)) were used in the production of this report:

MolProbity : 4.02b-467  
Mogul : 1.8.5 (274361), CSD as541be (2020)  
Xtriage (Phenix) : 1.13  
EDS : 2.13.1  
Percentile statistics : 20191225.v01 (using entries in the PDB archive December 25th 2019)  
Refmac : 5.8.0158  
CCP4 : 7.0.044 (Gargrove)  
Ideal geometry (proteins) : Engh & Huber (2001)  
Ideal geometry (DNA, RNA) : Parkinson et al. (1996)  
Validation Pipeline (wwPDB-VP) : 2.13.1

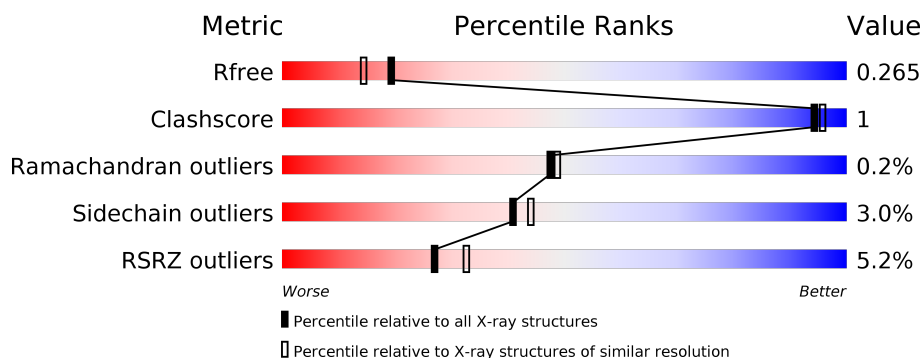
# 1 Overall quality at a glance i

The following experimental techniques were used to determine the structure:

*X-RAY DIFFRACTION*

The reported resolution of this entry is 2.10 Å.

Percentile scores (ranging between 0-100) for global validation metrics of the entry are shown in the following graphic. The table shows the number of entries on which the scores are based.





Metric	Whole archive (#Entries)	Similar resolution (#Entries, resolution range(Å))
$R_{free}$	130704	5197 (2.10-2.10)
Clashscore	141614	5710 (2.10-2.10)
Ramachandran outliers	138981	5647 (2.10-2.10)
Sidechain outliers	138945	5648 (2.10-2.10)
RSRZ outliers	127900	5083 (2.10-2.10)

The table below summarises the geometric issues observed across the polymeric chains and their fit to the electron density. The red, orange, yellow and green segments on the lower bar indicate the fraction of residues that contain outliers for  $\geq 3$ , 2, 1 and 0 types of geometric quality criteria respectively. A grey segment represents the fraction of residues that are not modelled. The numeric value for each fraction is indicated below the corresponding segment, with a dot representing fractions  $\leq 5\%$ . The upper red bar (where present) indicates the fraction of residues that have poor fit to the electron density. The numeric value is given above the bar.

Mol	Chain	Length	Quality of chain
1	A	153	<div> <div>5%</div> <div> <div></div> <div>87%</div> <div>10%</div> </div> </div>
1	B	153	<div> <div>%</div> <div> <div></div> <div>82%</div> <div>7% • 10%</div> </div> </div>
1	C	153	<div> <div>5%</div> <div> <div></div> <div>88%</div> <div>• • 8%</div> </div> </div>
1	D	153	<div> <div>8%</div> <div> <div></div> <div>84%</div> <div>7% • 8%</div> </div> </div>
2	E	4	<div> <div></div> <div> <div>25%</div> <div>75%</div> </div> </div>
2	F	4	<div> <div></div> <div> <div>50%</div> <div>50%</div> </div> </div>

*Continued on next page...*

*Continued from previous page...*

Mol	Chain	Length	Quality of chain
2	G	4	 50%50%
2	H	4	 50%50%

## 2 Entry composition [i](#)

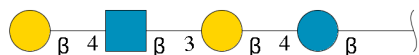
There are 5 unique types of molecules in this entry. The entry contains 4733 atoms, of which 0 are hydrogens and 0 are deuteriums.

In the tables below, the ZeroOcc column contains the number of atoms modelled with zero occupancy, the AltConf column contains the number of residues with at least one atom in alternate conformation and the Trace column contains the number of residues modelled with at most 2 atoms.

- Molecule 1 is a protein called Galectin-4.

Mol	Chain	Residues	Atoms					ZeroOcc	AltConf	Trace
1	A	138	Total	C	N	O	S	0	0	0
			1082	694	194	192	2			
1	B	138	Total	C	N	O	S	0	0	0
			1082	694	194	192	2			
1	C	140	Total	C	N	O	S	0	1	0
			1101	706	199	194	2			
1	D	140	Total	C	N	O	S	0	1	0
			1098	704	196	196	2			

- Molecule 2 is an oligosaccharide called beta-D-galactopyranose-(1-4)-2-acetamido-2-deoxy-beta-D-glucopyranose-(1-3)-beta-D-galactopyranose-(1-4)-beta-D-glucopyranose.



Mol	Chain	Residues	Atoms				ZeroOcc	AltConf	Trace
2	E	4	Total	C	N	O	0	0	0
			48	26	1	21			
2	F	4	Total	C	N	O	0	0	0
			48	26	1	21			
2	G	4	Total	C	N	O	0	0	0
			48	26	1	21			
2	H	4	Total	C	N	O	0	0	0
			48	26	1	21			

- Molecule 3 is GLYCEROL (three-letter code: GOL) (formula: C<sub>3</sub>H<sub>8</sub>O<sub>3</sub>).



Mol	Chain	Residues	Atoms			ZeroOcc	AltConf
3	A	1	Total	C	O	0	0
			6	3	3		

- Molecule 4 is SULFATE ION (three-letter code: SO4) (formula: O<sub>4</sub>S).



Mol	Chain	Residues	Atoms			ZeroOcc	AltConf
4	A	1	Total	O	S	0	0
			5	4	1		
4	B	1	Total	O	S	0	0
			5	4	1		
4	B	1	Total	O	S	0	0
			5	4	1		

*Continued on next page...*

*Continued from previous page...*

Mol	Chain	Residues	Atoms			ZeroOcc	AltConf
4	C	1	Total	O	S	0	0
			5	4	1		
4	D	1	Total	O	S	0	0
			5	4	1		
4	D	1	Total	O	S	0	0
			5	4	1		

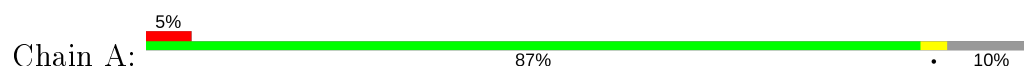
- Molecule 5 is water.

Mol	Chain	Residues	Atoms		ZeroOcc	AltConf
5	A	29	Total	O	0	0
			29	29		
5	B	51	Total	O	0	0
			51	51		
5	C	33	Total	O	0	0
			33	33		
5	D	29	Total	O	0	0
			29	29		

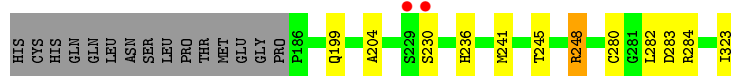
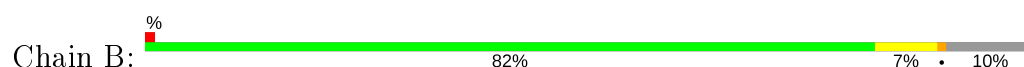
### 3 Residue-property plots [i](#)

These plots are drawn for all protein, RNA, DNA and oligosaccharide chains in the entry. The first graphic for a chain summarises the proportions of the various outlier classes displayed in the second graphic. The second graphic shows the sequence view annotated by issues in geometry and electron density. Residues are color-coded according to the number of geometric quality criteria for which they contain at least one outlier: green = 0, yellow = 1, orange = 2 and red = 3 or more. A red dot above a residue indicates a poor fit to the electron density ( $RSRZ > 2$ ). Stretches of 2 or more consecutive residues without any outlier are shown as a green connector. Residues present in the sample, but not in the model, are shown in grey.

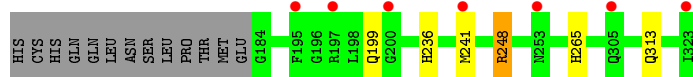
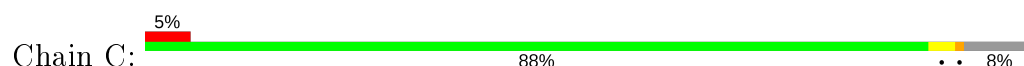
- Molecule 1: Galectin-4



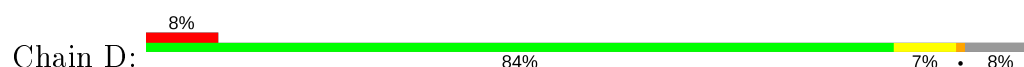
- Molecule 1: Galectin-4



- Molecule 1: Galectin-4



- Molecule 1: Galectin-4



- Molecule 2: beta-D-galactopyranose-(1-4)-2-acetamido-2-deoxy-beta-D-glucopyranose-(1-3)-beta-D-galactopyranose-(1-4)-beta-D-glucopyranose



- Molecule 2: beta-D-galactopyranose-(1-4)-2-acetamido-2-deoxy-beta-D-glucopyranose-(1-3)-beta-D-galactopyranose-(1-4)-beta-D-glucopyranose

Chain F:  50% 50%



- Molecule 2: beta-D-galactopyranose-(1-4)-2-acetamido-2-deoxy-beta-D-glucopyranose-(1-3)-beta-D-galactopyranose-(1-4)-beta-D-glucopyranose

Chain G:  50% 50%



- Molecule 2: beta-D-galactopyranose-(1-4)-2-acetamido-2-deoxy-beta-D-glucopyranose-(1-3)-beta-D-galactopyranose-(1-4)-beta-D-glucopyranose

Chain H:  50% 50%





## 4 Data and refinement statistics

Property	Value	Source
Space group	P 1 21 1	Depositor
Cell constants a, b, c, $\alpha$ , $\beta$ , $\gamma$	45.08Å 127.64Å 45.10Å 90.00° 96.05° 90.00°	Depositor
Resolution (Å)	44.85 – 2.10 42.31 – 2.10	Depositor EDS
% Data completeness (in resolution range)	99.8 (44.85-2.10) 99.7 (42.31-2.10)	Depositor EDS
$R_{merge}$	0.09	Depositor
$R_{sym}$	(Not available)	Depositor
$\langle I/\sigma(I) \rangle$ <sup>1</sup>	13.17 (at 2.10Å)	Xtriage
Refinement program	REFMAC	Depositor
R, $R_{free}$	0.205 , 0.265 0.210 , 0.265	Depositor DCC
$R_{free}$ test set	1403 reflections (4.76%)	wwPDB-VP
Wilson B-factor (Å <sup>2</sup> )	24.9	Xtriage
Anisotropy	0.019	Xtriage
Bulk solvent $k_{sol}$ (e/Å <sup>3</sup> ), $B_{sol}$ (Å <sup>2</sup> )	0.36 , 17.3	EDS
L-test for twinning <sup>2</sup>	$\langle  L  \rangle = 0.38$ , $\langle L^2 \rangle = 0.21$	Xtriage
Estimated twinning fraction	0.308 for l,-k,h	Xtriage
$F_o, F_c$ correlation	0.95	EDS
Total number of atoms	4733	wwPDB-VP
Average B, all atoms (Å <sup>2</sup> )	25.0	wwPDB-VP

Xtriage's analysis on translational NCS is as follows: *The largest off-origin peak in the Patterson function is 8.80% of the height of the origin peak. No significant pseudotranslation is detected.*

<sup>1</sup>Intensities estimated from amplitudes.

<sup>2</sup>Theoretical values of  $\langle |L| \rangle$ ,  $\langle L^2 \rangle$  for acentric reflections are 0.5, 0.333 respectively for untwinned datasets, and 0.375, 0.2 for perfectly twinned datasets.

## 5 Model quality [i](#)

### 5.1 Standard geometry [i](#)

Bond lengths and bond angles in the following residue types are not validated in this section: GAL, GOL, BGC, NAG, SO4

The Z score for a bond length (or angle) is the number of standard deviations the observed value is removed from the expected value. A bond length (or angle) with  $|Z| > 5$  is considered an outlier worth inspection. RMSZ is the root-mean-square of all Z scores of the bond lengths (or angles).

Mol	Chain	Bond lengths		Bond angles	
		RMSZ	$\# Z  > 5$	RMSZ	$\# Z  > 5$
1	A	0.43	0/1111	0.66	0/1502
1	B	0.44	0/1111	0.66	0/1502
1	C	0.42	0/1134	0.63	0/1534
1	D	0.43	0/1131	0.65	0/1531
All	All	0.43	0/4487	0.65	0/6069

There are no bond length outliers.

There are no bond angle outliers.

There are no chirality outliers.

There are no planarity outliers.

### 5.2 Too-close contacts [i](#)

In the following table, the Non-H and H(model) columns list the number of non-hydrogen atoms and hydrogen atoms in the chain respectively. The H(added) column lists the number of hydrogen atoms added and optimized by MolProbity. The Clashes column lists the number of clashes within the asymmetric unit, whereas Symm-Clashes lists symmetry related clashes.

Mol	Chain	Non-H	H(model)	H(added)	Clashes	Symm-Clashes
1	A	1082	0	1074	3	0
1	B	1082	0	1074	6	0
1	C	1101	0	1096	2	0
1	D	1098	0	1087	5	0
2	E	48	0	42	0	0
2	F	48	0	42	0	0
2	G	48	0	42	0	0
2	H	48	0	42	0	0
3	A	6	0	8	1	0

*Continued on next page...*

*Continued from previous page...*

Mol	Chain	Non-H	H(model)	H(added)	Clashes	Symm-Clashes
4	A	5	0	0	0	0
4	B	10	0	0	0	0
4	C	5	0	0	0	0
4	D	10	0	0	0	0
5	A	29	0	0	0	0
5	B	51	0	0	1	0
5	C	33	0	0	0	0
5	D	29	0	0	0	0
All	All	4733	0	4507	12	0

The all-atom clashscore is defined as the number of clashes found per 1000 atoms (including hydrogen atoms). The all-atom clashscore for this structure is 1.

All (12) close contacts within the same asymmetric unit are listed below, sorted by their clash magnitude.

Atom-1	Atom-2	Interatomic distance (Å)	Clash overlap (Å)
1:B:245:THR:HG22	1:C:265:HIS:HB3	1.78	0.64
1:A:282:LEU:N	3:A:404:GOL:O2	2.28	0.63
1:A:245:THR:HG22	1:D:265:HIS:HB3	1.88	0.54
1:D:293:HIS:NE2	1:D:296:ASP:OD1	2.39	0.54
1:B:204:ALA:O	1:B:280:CYS:O	2.27	0.53
1:B:282:LEU:O	1:D:258:SER:HA	2.11	0.50
1:C:236:HIS:O	1:C:248:ARG:HA	2.18	0.44
1:B:323:ILE:HG22	5:B:538:HOH:O	2.19	0.43
1:D:236:HIS:O	1:D:248:ARG:HA	2.18	0.43
1:B:283:ASP:HB2	1:B:284:ARG:NH1	2.35	0.42
1:A:262:LYS:HD3	1:D:262:LYS:HD2	2.03	0.41
1:B:236:HIS:O	1:B:248:ARG:HA	2.22	0.40

There are no symmetry-related clashes.

## 5.3 Torsion angles [i](#)

### 5.3.1 Protein backbone [i](#)

In the following table, the Percentiles column shows the percent Ramachandran outliers of the chain as a percentile score with respect to all X-ray entries followed by that with respect to entries of similar resolution.

The Analysed column shows the number of residues for which the backbone conformation was analysed, and the total number of residues.

Mol	Chain	Analysed	Favoured	Allowed	Outliers	Percentiles	
1	A	136/153 (89%)	134 (98%)	2 (2%)	0	100	100
1	B	136/153 (89%)	135 (99%)	0	1 (1%)	22	18
1	C	139/153 (91%)	137 (99%)	2 (1%)	0	100	100
1	D	139/153 (91%)	132 (95%)	7 (5%)	0	100	100
All	All	550/612 (90%)	538 (98%)	11 (2%)	1 (0%)	47	49

All (1) Ramachandran outliers are listed below:

Mol	Chain	Res	Type
1	B	230	SER

### 5.3.2 Protein sidechains ⓘ

In the following table, the Percentiles column shows the percent sidechain outliers of the chain as a percentile score with respect to all X-ray entries followed by that with respect to entries of similar resolution.

The Analysed column shows the number of residues for which the sidechain conformation was analysed, and the total number of residues.

Mol	Chain	Analysed	Rotameric	Outliers	Percentiles	
1	A	116/130 (89%)	114 (98%)	2 (2%)	60	67
1	B	116/130 (89%)	113 (97%)	3 (3%)	46	50
1	C	118/130 (91%)	114 (97%)	4 (3%)	37	39
1	D	118/130 (91%)	113 (96%)	5 (4%)	30	30
All	All	468/520 (90%)	454 (97%)	14 (3%)	41	44

All (14) residues with a non-rotameric sidechain are listed below:

Mol	Chain	Res	Type
1	A	197	ARG
1	A	241	MET
1	B	199	GLN
1	B	241	MET
1	B	248	ARG
1	C	199	GLN
1	C	241	MET
1	C	248	ARG
1	C	313	GLN
1	D	199	GLN

*Continued on next page...*

*Continued from previous page...*

Mol	Chain	Res	Type
1	D	229	SER
1	D	241	MET
1	D	248	ARG
1	D	284	ARG

Some sidechains can be flipped to improve hydrogen bonding and reduce clashes. All (1) such sidechains are listed below:

Mol	Chain	Res	Type
1	A	313	GLN

### 5.3.3 RNA ⓘ

There are no RNA molecules in this entry.

## 5.4 Non-standard residues in protein, DNA, RNA chains ⓘ

There are no non-standard protein/DNA/RNA residues in this entry.

## 5.5 Carbohydrates ⓘ

16 monosaccharides are modelled in this entry.

In the following table, the Counts columns list the number of bonds (or angles) for which Mogul statistics could be retrieved, the number of bonds (or angles) that are observed in the model and the number of bonds (or angles) that are defined in the Chemical Component Dictionary. The Link column lists molecule types, if any, to which the group is linked. The Z score for a bond length (or angle) is the number of standard deviations the observed value is removed from the expected value. A bond length (or angle) with  $|Z| > 2$  is considered an outlier worth inspection. RMSZ is the root-mean-square of all Z scores of the bond lengths (or angles).

Mol	Type	Chain	Res	Link	Bond lengths			Bond angles		
					Counts	RMSZ	$\# Z  > 2$	Counts	RMSZ	$\# Z  > 2$
2	BGC	E	1	2	12,12,12	0.45	0	17,17,17	0.72	0
2	GAL	E	2	2	11,11,12	0.37	0	15,15,17	0.90	1 (6%)
2	NAG	E	3	2	14,14,15	0.31	0	17,19,21	1.06	1 (5%)
2	GAL	E	4	2	11,11,12	0.40	0	15,15,17	1.35	2 (13%)
2	BGC	F	1	2	12,12,12	0.51	0	17,17,17	1.01	0
2	GAL	F	2	2	11,11,12	0.50	0	15,15,17	0.58	0
2	NAG	F	3	2	14,14,15	0.43	0	17,19,21	1.10	1 (5%)

Mol	Type	Chain	Res	Link	Bond lengths			Bond angles		
					Counts	RMSZ	# Z  > 2	Counts	RMSZ	# Z  > 2
2	GAL	F	4	2	11,11,12	0.52	0	15,15,17	1.41	3 (20%)
2	BGC	G	1	2	12,12,12	0.53	0	17,17,17	0.65	0
2	GAL	G	2	2	11,11,12	0.31	0	15,15,17	0.82	0
2	NAG	G	3	2	14,14,15	0.30	0	17,19,21	1.05	1 (5%)
2	GAL	G	4	2	11,11,12	0.30	0	15,15,17	0.86	1 (6%)
2	BGC	H	1	2	12,12,12	0.54	0	17,17,17	0.71	0
2	GAL	H	2	2	11,11,12	0.52	0	15,15,17	0.94	0
2	NAG	H	3	2	14,14,15	0.35	0	17,19,21	1.17	1 (5%)
2	GAL	H	4	2	11,11,12	0.32	0	15,15,17	1.08	1 (6%)

In the following table, the Chirals column lists the number of chiral outliers, the number of chiral centers analysed, the number of these observed in the model and the number defined in the Chemical Component Dictionary. Similar counts are reported in the Torsion and Rings columns. '-' means no outliers of that kind were identified.

Mol	Type	Chain	Res	Link	Chirals	Torsions	Rings
2	BGC	E	1	2	-	0/2/22/22	0/1/1/1
2	GAL	E	2	2	-	0/2/19/22	0/1/1/1
2	NAG	E	3	2	-	0/6/23/26	0/1/1/1
2	GAL	E	4	2	-	0/2/19/22	0/1/1/1
2	BGC	F	1	2	-	0/2/22/22	0/1/1/1
2	GAL	F	2	2	-	0/2/19/22	0/1/1/1
2	NAG	F	3	2	-	0/6/23/26	0/1/1/1
2	GAL	F	4	2	-	0/2/19/22	0/1/1/1
2	BGC	G	1	2	-	2/2/22/22	0/1/1/1
2	GAL	G	2	2	-	0/2/19/22	0/1/1/1
2	NAG	G	3	2	-	0/6/23/26	0/1/1/1
2	GAL	G	4	2	-	0/2/19/22	0/1/1/1
2	BGC	H	1	2	-	2/2/22/22	0/1/1/1
2	GAL	H	2	2	-	0/2/19/22	0/1/1/1
2	NAG	H	3	2	-	0/6/23/26	0/1/1/1
2	GAL	H	4	2	-	0/2/19/22	0/1/1/1

There are no bond length outliers.

All (12) bond angle outliers are listed below:

Mol	Chain	Res	Type	Atoms	Z	Observed(°)	Ideal(°)
2	F	4	GAL	C1-C2-C3	4.00	114.58	109.67
2	G	3	NAG	C1-O5-C5	3.92	117.50	112.19
2	E	4	GAL	C1-C2-C3	3.66	114.16	109.67

*Continued on next page...*

Continued from previous page...

Mol	Chain	Res	Type	Atoms	Z	Observed(°)	Ideal(°)
2	F	3	NAG	C1-O5-C5	3.56	117.01	112.19
2	H	4	GAL	C1-C2-C3	3.31	113.74	109.67
2	E	3	NAG	O5-C5-C6	2.48	111.10	107.20
2	E	2	GAL	O5-C5-C6	2.42	111.00	107.20
2	F	4	GAL	O2-C2-C3	-2.29	105.56	110.14
2	H	3	NAG	C1-C2-N2	-2.28	106.60	110.49
2	F	4	GAL	C2-C3-C4	2.25	114.79	110.89
2	G	4	GAL	O5-C5-C6	2.10	110.50	107.20
2	E	4	GAL	C2-C3-C4	2.09	114.51	110.89

There are no chirality outliers.

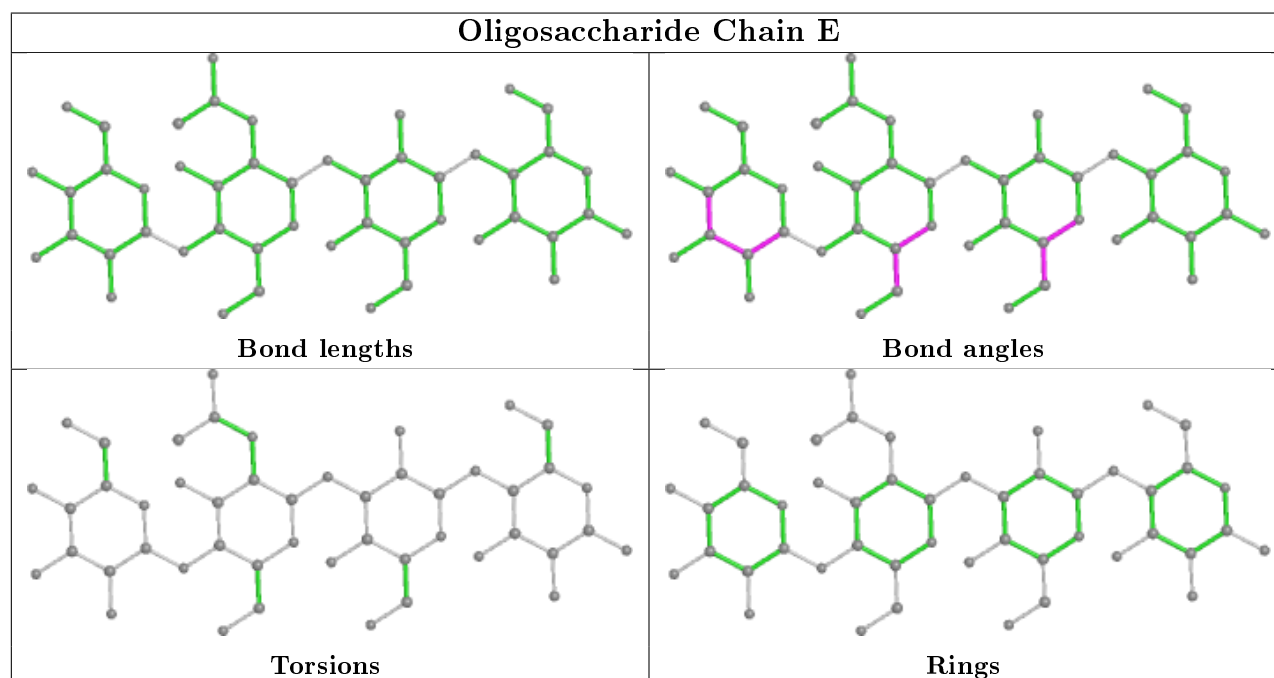
All (4) torsion outliers are listed below:

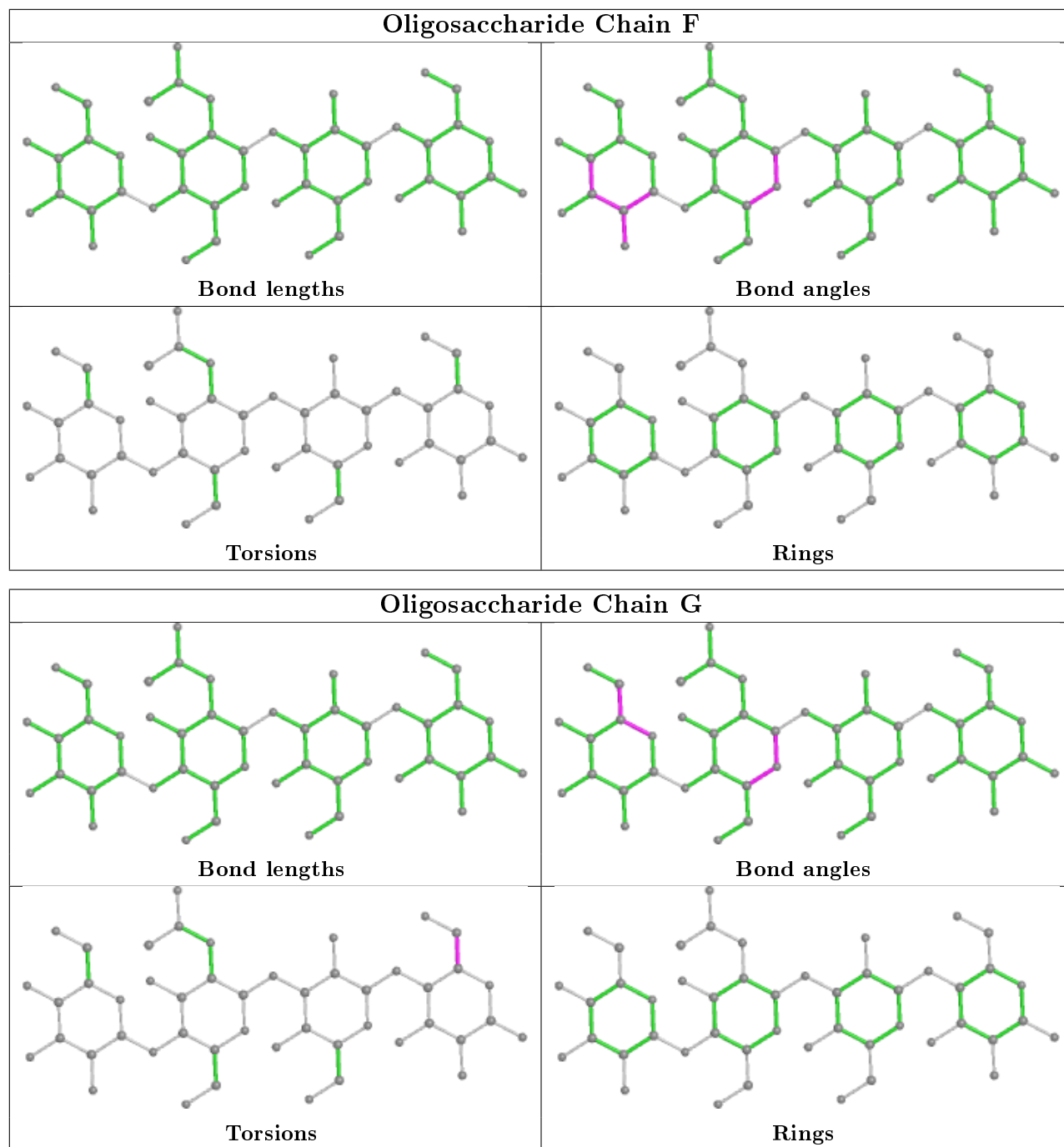
Mol	Chain	Res	Type	Atoms
2	H	1	BGC	O5-C5-C6-O6
2	H	1	BGC	C4-C5-C6-O6
2	G	1	BGC	O5-C5-C6-O6
2	G	1	BGC	C4-C5-C6-O6

There are no ring outliers.

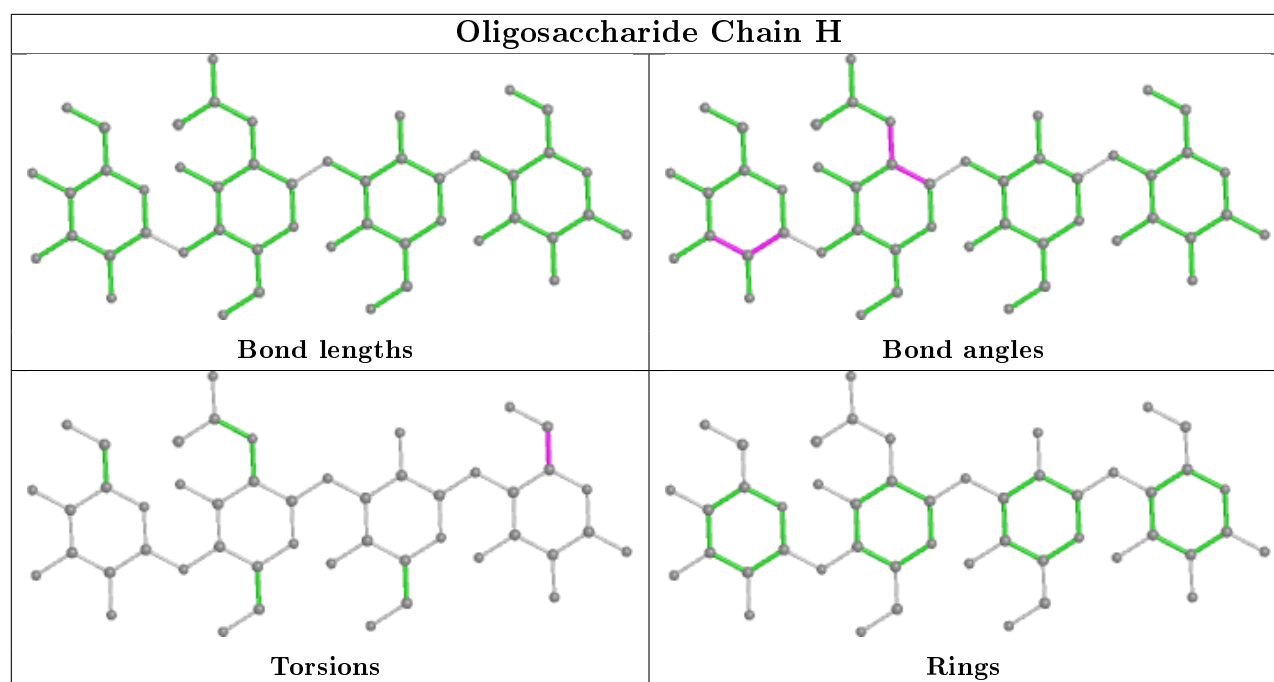
No monomer is involved in short contacts.

The following is a two-dimensional graphical depiction of Mogul quality analysis of bond lengths, bond angles, torsion angles, and ring geometry for oligosaccharide.









## 5.6 Ligand geometry [i](#)

7 ligands are modelled in this entry.

In the following table, the Counts columns list the number of bonds (or angles) for which Mogul statistics could be retrieved, the number of bonds (or angles) that are observed in the model and the number of bonds (or angles) that are defined in the Chemical Component Dictionary. The Link column lists molecule types, if any, to which the group is linked. The Z score for a bond length (or angle) is the number of standard deviations the observed value is removed from the expected value. A bond length (or angle) with  $|Z| > 2$  is considered an outlier worth inspection. RMSZ is the root-mean-square of all Z scores of the bond lengths (or angles).

Mol	Type	Chain	Res	Link	Bond lengths			Bond angles		
					Counts	RMSZ	$\# Z  > 2$	Counts	RMSZ	$\# Z  > 2$
4	SO4	D	404	-	4,4,4	0.40	0	6,6,6	0.15	0
3	GOL	A	404	-	5,5,5	0.44	0	5,5,5	0.48	0
4	SO4	B	404	-	4,4,4	0.34	0	6,6,6	0.29	0
4	SO4	B	405	-	4,4,4	0.36	0	6,6,6	0.08	0
4	SO4	D	405	-	4,4,4	0.29	0	6,6,6	0.20	0
4	SO4	A	405	-	4,4,4	0.32	0	6,6,6	0.29	0
4	SO4	C	404	-	4,4,4	0.39	0	6,6,6	0.18	0

In the following table, the Chirals column lists the number of chiral outliers, the number of chiral centers analysed, the number of these observed in the model and the number defined in the Chemical Component Dictionary. Similar counts are reported in the Torsion and Rings columns. '-' means no outliers of that kind were identified.

Mol	Type	Chain	Res	Link	Chirals	Torsions	Rings
3	GOL	A	404	-	-	2/4/4/4	-

There are no bond length outliers.

There are no bond angle outliers.

There are no chirality outliers.

All (2) torsion outliers are listed below:

Mol	Chain	Res	Type	Atoms
3	A	404	GOL	C1-C2-C3-O3
3	A	404	GOL	O2-C2-C3-O3

There are no ring outliers.

1 monomer is involved in 1 short contact:

Mol	Chain	Res	Type	Clashes	Symm-Clashes
3	A	404	GOL	1	0

## 5.7 Other polymers [i](#)

There are no such residues in this entry.

## 5.8 Polymer linkage issues [i](#)

There are no chain breaks in this entry.

## 6 Fit of model and data ⓘ

### 6.1 Protein, DNA and RNA chains ⓘ

In the following table, the column labelled ‘#RSRZ> 2’ contains the number (and percentage) of RSRZ outliers, followed by percent RSRZ outliers for the chain as percentile scores relative to all X-ray entries and entries of similar resolution. The OWAB column contains the minimum, median, 95<sup>th</sup> percentile and maximum values of the occupancy-weighted average B-factor per residue. The column labelled ‘Q< 0.9’ lists the number of (and percentage) of residues with an average occupancy less than 0.9.

Mol	Chain	Analysed	<RSRZ>	#RSRZ>2	OWAB(Å <sup>2</sup> )	Q<0.9
1	A	138/153 (90%)	0.17	7 (5%) 28 33	14, 23, 47, 59	1 (0%)
1	B	138/153 (90%)	0.04	2 (1%) 75 78	12, 21, 40, 49	0
1	C	140/153 (91%)	0.18	7 (5%) 28 34	14, 24, 40, 54	0
1	D	140/153 (91%)	0.43	13 (9%) 8 11	14, 25, 55, 59	0
All	All	556/612 (90%)	0.21	29 (5%) 27 32	12, 23, 46, 59	1 (0%)

All (29) RSRZ outliers are listed below:

Mol	Chain	Res	Type	RSRZ
1	D	302	SER	4.1
1	D	301	LEU	3.8
1	B	229	SER	3.8
1	D	199	GLN	3.7
1	D	231	GLY	3.7
1	D	198	LEU	3.6
1	D	230	SER	3.5
1	C	323	ILE	3.4
1	D	227	VAL	3.2
1	C	200	GLY	3.1
1	D	282	LEU	3.0
1	C	253	ASN	2.9
1	C	305	GLN	2.7
1	D	197	ARG	2.7
1	D	229	SER	2.6
1	B	230	SER	2.6
1	C	195	PHE	2.6
1	D	270	PRO	2.5
1	A	229	SER	2.4
1	A	197	ARG	2.4
1	D	304	PHE	2.3

*Continued on next page...*

*Continued from previous page...*

Mol	Chain	Res	Type	RSRZ
1	A	205	ARG	2.3
1	D	217	THR	2.2
1	A	186	PRO	2.2
1	C	241	MET	2.2
1	A	203	THR	2.2
1	A	305	GLN	2.1
1	C	197	ARG	2.0
1	A	204	ALA	2.0

## 6.2 Non-standard residues in protein, DNA, RNA chains ⓘ

There are no non-standard protein/DNA/RNA residues in this entry.

## 6.3 Carbohydrates ⓘ

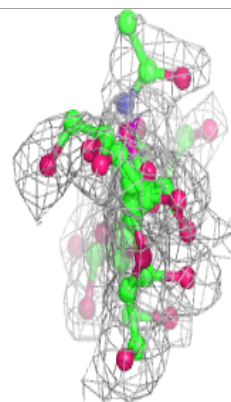
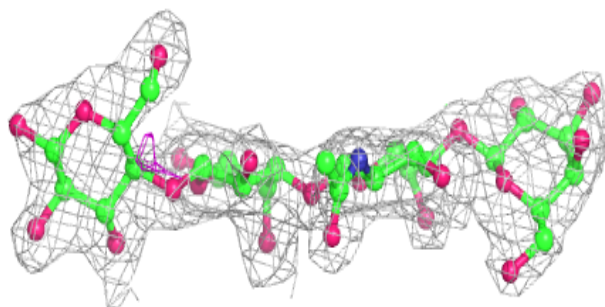
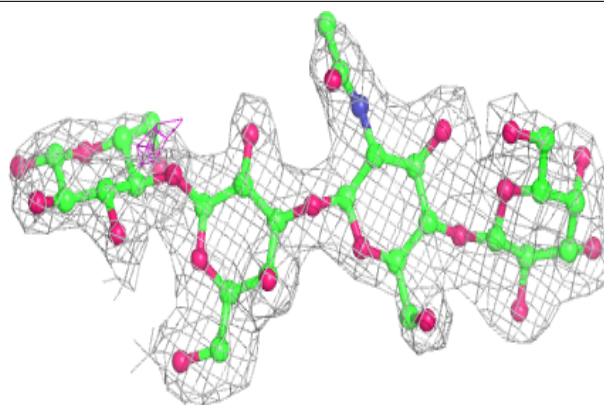
In the following table, the Atoms column lists the number of modelled atoms in the group and the number defined in the chemical component dictionary. The B-factors column lists the minimum, median, 95<sup>th</sup> percentile and maximum values of B factors of atoms in the group. The column labelled 'Q< 0.9' lists the number of atoms with occupancy less than 0.9.

Mol	Type	Chain	Res	Atoms	RSCC	RSR	B-factors(Å <sup>2</sup> )	Q<0.9
2	GAL	F	4	11/12	0.78	0.19	33,37,40,41	0
2	BGC	E	1	12/12	0.83	0.19	32,34,37,37	0
2	BGC	F	1	12/12	0.84	0.17	30,32,34,38	0
2	BGC	G	1	12/12	0.87	0.14	28,29,33,36	0
2	BGC	H	1	12/12	0.87	0.18	24,28,30,31	0
2	GAL	H	4	11/12	0.88	0.13	28,31,33,34	0
2	GAL	G	4	11/12	0.88	0.12	35,39,42,43	0
2	GAL	E	4	11/12	0.89	0.14	41,43,45,46	0
2	NAG	E	3	14/15	0.91	0.14	36,38,42,46	0
2	NAG	F	3	14/15	0.92	0.12	28,33,35,36	0
2	GAL	E	2	11/12	0.92	0.13	25,27,29,30	0
2	NAG	G	3	14/15	0.93	0.12	25,27,28,30	0
2	GAL	F	2	11/12	0.93	0.11	23,26,28,28	0
2	GAL	G	2	11/12	0.94	0.11	20,23,25,26	0
2	GAL	H	2	11/12	0.94	0.11	17,19,21,21	0
2	NAG	H	3	14/15	0.97	0.10	19,22,24,26	0

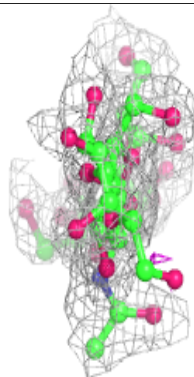
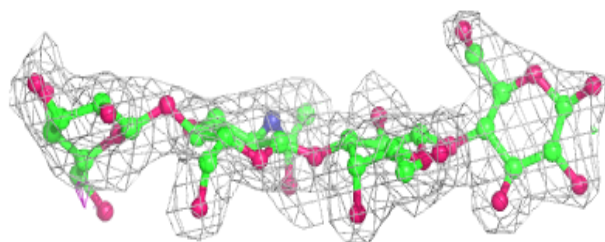
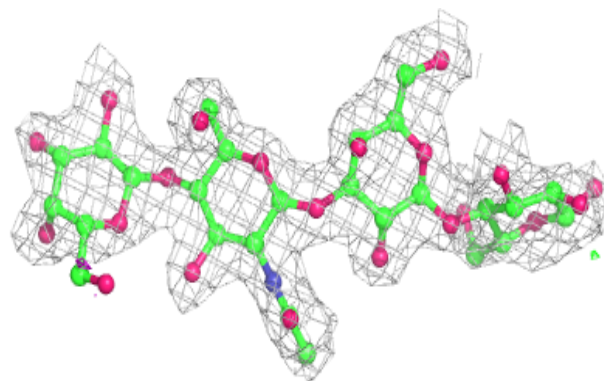
The following is a graphical depiction of the model fit to experimental electron density for oligosaccharide. Each fit is shown from different orientation to approximate a three-dimensional view.

**Electron density around Chain E:**

$2mF_o-DF_c$  (at 0.7 rmsd) in gray  
 $mF_o-DF_c$  (at 3 rmsd) in purple (negative)  
and green (positive)

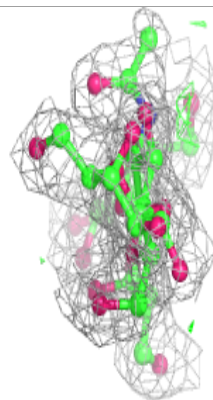
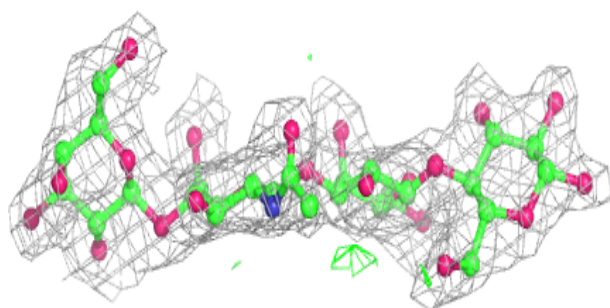
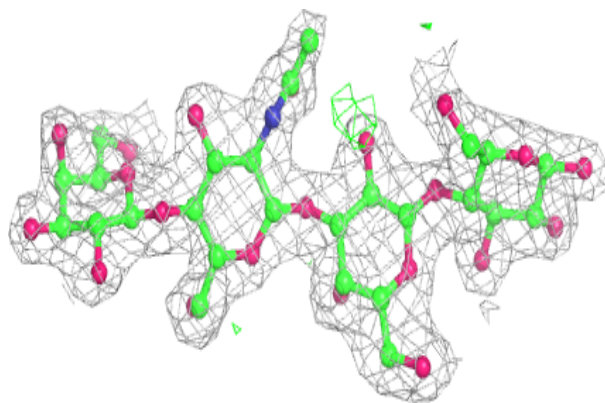
**Electron density around Chain F:**

$2mF_o-DF_c$  (at 0.7 rmsd) in gray  
 $mF_o-DF_c$  (at 3 rmsd) in purple (negative)  
and green (positive)

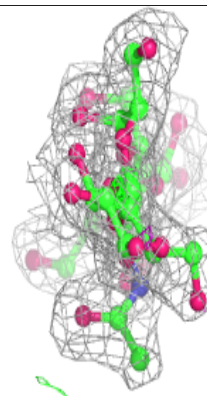
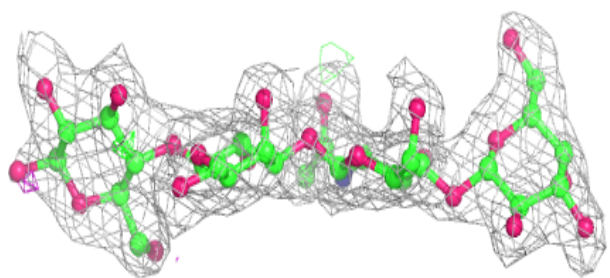
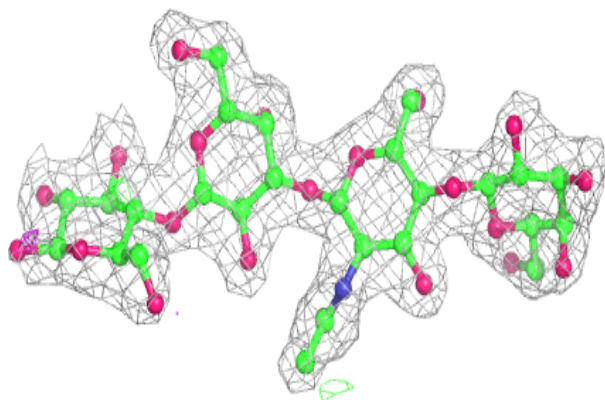


**Electron density around Chain G:**

$2mF_o-DF_c$  (at 0.7 rmsd) in gray  
 $mF_o-DF_c$  (at 3 rmsd) in purple (negative)  
and green (positive)

**Electron density around Chain H:**

$2mF_o-DF_c$  (at 0.7 rmsd) in gray  
 $mF_o-DF_c$  (at 3 rmsd) in purple (negative)  
and green (positive)



## 6.4 Ligands [i](#)

In the following table, the Atoms column lists the number of modelled atoms in the group and the number defined in the chemical component dictionary. The B-factors column lists the minimum, median, 95<sup>th</sup> percentile and maximum values of B factors of atoms in the group. The column labelled 'Q< 0.9' lists the number of atoms with occupancy less than 0.9.

Mol	Type	Chain	Res	Atoms	RSCC	RSR	B-factors( $\text{\AA}^2$ )	Q<0.9
3	GOL	A	404	6/6	0.77	0.21	35,39,40,41	0
4	SO4	D	404	5/5	0.91	0.23	47,49,51,51	0
4	SO4	B	404	5/5	0.94	0.17	31,34,36,36	0
4	SO4	C	404	5/5	0.94	0.14	37,38,39,39	0
4	SO4	B	405	5/5	0.96	0.12	53,54,54,56	0
4	SO4	A	405	5/5	0.97	0.09	36,37,39,40	0
4	SO4	D	405	5/5	0.97	0.10	50,50,51,51	0

## 6.5 Other polymers [i](#)

There are no such residues in this entry.