



# wwPDB X-ray Structure Validation Summary Report ⓘ

May 25, 2020 – 07:07 pm BST

PDB ID : 5YL2  
Title : Crystal structure of T2R-TTL-Y28 complex  
Authors : Yang, J.H.; Yang, T.; Wen, J.L.; Chen, L.J.  
Deposited on : 2017-10-16  
Resolution : 2.09 Å(reported)

This is a wwPDB X-ray Structure Validation Summary Report for a publicly released PDB entry.

We welcome your comments at [validation@mail.wwpdb.org](mailto:validation@mail.wwpdb.org)

A user guide is available at

<https://www.wwpdb.org/validation/2017/XrayValidationReportHelp>

with specific help available everywhere you see the ⓘ symbol.

---

The following versions of software and data (see [references ⓘ](#)) were used in the production of this report:

MolProbity : 4.02b-467  
Mogul : 1.8.5 (274361), CSD as541be (2020)  
Xtriage (Phenix) : 1.13  
EDS : 2.11  
buster-report : 1.1.7 (2018)  
Percentile statistics : 20191225.v01 (using entries in the PDB archive December 25th 2019)  
Refmac : 5.8.0158  
CCP4 : 7.0.044 (Gargrove)  
Ideal geometry (proteins) : Engh & Huber (2001)  
Ideal geometry (DNA, RNA) : Parkinson et al. (1996)  
Validation Pipeline (wwPDB-VP) : 2.11

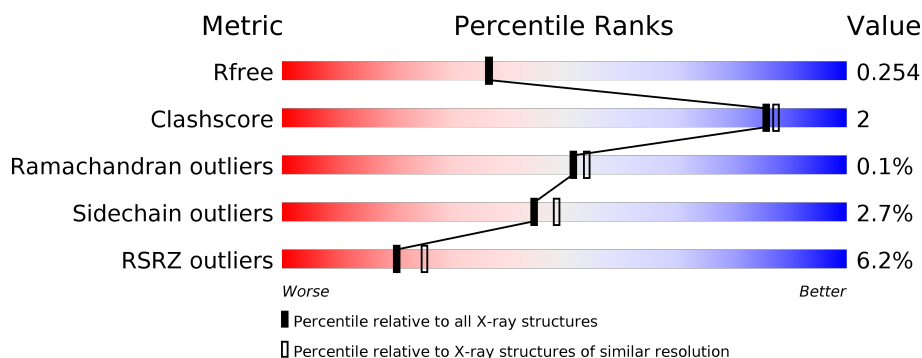
# 1 Overall quality at a glance

The following experimental techniques were used to determine the structure:

## *X-RAY DIFFRACTION*

The reported resolution of this entry is 2.09 Å.

Percentile scores (ranging between 0-100) for global validation metrics of the entry are shown in the following graphic. The table shows the number of entries on which the scores are based.



Metric	Whole archive (#Entries)	Similar resolution (#Entries, resolution range(Å))
$R_{free}$	130704	5197 (2.10-2.10)
Clashscore	141614	5710 (2.10-2.10)
Ramachandran outliers	138981	5647 (2.10-2.10)
Sidechain outliers	138945	5648 (2.10-2.10)
RSRZ outliers	127900	5083 (2.10-2.10)

The table below summarises the geometric issues observed across the polymeric chains and their fit to the electron density. The red, orange, yellow and green segments on the lower bar indicate the fraction of residues that contain outliers for  $\geq 3$ , 2, 1 and 0 types of geometric quality criteria respectively. A grey segment represents the fraction of residues that are not modelled. The numeric value for each fraction is indicated below the corresponding segment, with a dot representing fractions  $\leq 5\%$ . The upper red bar (where present) indicates the fraction of residues that have poor fit to the electron density. The numeric value is given above the bar.

Mol	Chain	Length	Quality of chain
1	A	451	<div> <div>89%</div> <div>7%</div> <div>•</div> </div>
1	C	451	<div> <div>89%</div> <div>8%</div> <div>••</div> </div>
2	B	445	<div> <div>3%</div> <div>89%</div> <div>7%</div> <div>•</div> </div>
2	D	445	<div> <div>8%</div> <div>86%</div> <div>8%</div> <div>5%</div> </div>
3	E	143	<div> <div>9%</div> <div>80%</div> <div>••</div> <div>15%</div> </div>
4	F	384	<div> <div>16%</div> <div>80%</div> <div>6%</div> <div>•</div> <div>13%</div> </div>

## 2 Entry composition

There are 13 unique types of molecules in this entry. The entry contains 18366 atoms, of which 0 are hydrogens and 0 are deuteriums.

In the tables below, the ZeroOcc column contains the number of atoms modelled with zero occupancy, the AltConf column contains the number of residues with at least one atom in alternate conformation and the Trace column contains the number of residues modelled with at most 2 atoms.

- Molecule 1 is a protein called Tubulin alpha-1B chain.

Mol	Chain	Residues	Atoms					ZeroOcc	AltConf	Trace
1	A	437	Total	C	N	O	S	0	0	0
			3416	2163	581	650	22			
1	C	440	Total	C	N	O	S	0	0	0
			3437	2175	584	656	22			

- Molecule 2 is a protein called Tubulin beta chain.

Mol	Chain	Residues	Atoms					ZeroOcc	AltConf	Trace
2	B	428	Total	C	N	O	S	0	0	0
			3369	2115	577	650	27			
2	D	421	Total	C	N	O	S	0	0	0
			3309	2080	562	640	27			

- Molecule 3 is a protein called Stathmin-4.

Mol	Chain	Residues	Atoms					ZeroOcc	AltConf	Trace
3	E	121	Total	C	N	O	S	0	0	0
			1000	617	181	197	5			

There are 2 discrepancies between the modelled and reference sequences:

Chain	Residue	Modelled	Actual	Comment	Reference
E	3	MET	-	expression tag	UNP P63043
E	4	ALA	-	expression tag	UNP P63043

- Molecule 4 is a protein called Tubulin tyrosine ligase.

Mol	Chain	Residues	Atoms					ZeroOcc	AltConf	Trace
4	F	334	Total	C	N	O	S	0	0	0
			2744	1761	470	499	14			

There are 6 discrepancies between the modelled and reference sequences:

Chain	Residue	Modelled	Actual	Comment	Reference
F	379	HIS	-	expression tag	UNP E1BQ43
F	380	HIS	-	expression tag	UNP E1BQ43
F	381	HIS	-	expression tag	UNP E1BQ43
F	382	HIS	-	expression tag	UNP E1BQ43
F	383	HIS	-	expression tag	UNP E1BQ43
F	384	HIS	-	expression tag	UNP E1BQ43

- Molecule 5 is GUANOSINE-5'-TRIPHOSPHATE (three-letter code: GTP) (formula:  $C_{10}H_{16}N_5O_{14}P_3$ ).



Mol	Chain	Residues	Atoms					ZeroOcc	AltConf
5	A	1	Total	C	N	O	P	0	0
			32	10	5	14	3		
5	C	1	Total	C	N	O	P	0	0
			32	10	5	14	3		
5	D	1	Total	C	N	O	P	0	0
			32	10	5	14	3		

- Molecule 6 is MAGNESIUM ION (three-letter code: MG) (formula: Mg).

Mol	Chain	Residues	Atoms		ZeroOcc	AltConf
6	B	1	Total	Mg	0	0
			1	1		
6	A	1	Total	Mg	0	0
			1	1		
6	D	1	Total	Mg	0	0
			1	1		

*Continued on next page...*

*Continued from previous page...*

Mol	Chain	Residues	Atoms		ZeroOcc	AltConf
6	C	1	Total	Mg	0	0
			1	1		

- Molecule 7 is CALCIUM ION (three-letter code: CA) (formula: Ca).

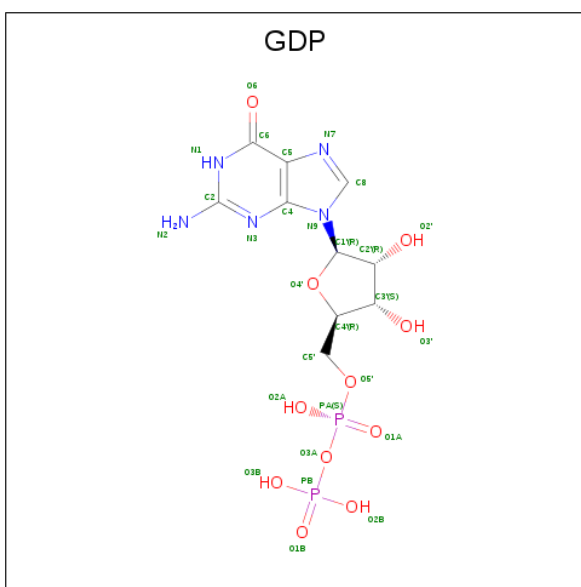
Mol	Chain	Residues	Atoms		ZeroOcc	AltConf
7	A	1	Total	Ca	0	0
			1	1		
7	C	1	Total	Ca	0	0
			1	1		

- Molecule 8 is GLYCEROL (three-letter code: GOL) (formula: C<sub>3</sub>H<sub>8</sub>O<sub>3</sub>).



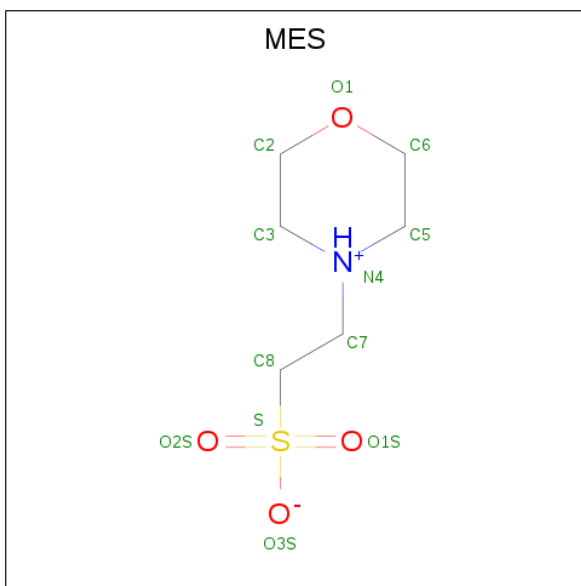
Mol	Chain	Residues	Atoms			ZeroOcc	AltConf
8	A	1	Total	C	O	0	0
			6	3	3		

- Molecule 9 is GUANOSINE-5'-DIPHOSPHATE (three-letter code: GDP) (formula: C<sub>10</sub>H<sub>15</sub>N<sub>5</sub>O<sub>11</sub>P<sub>2</sub>).



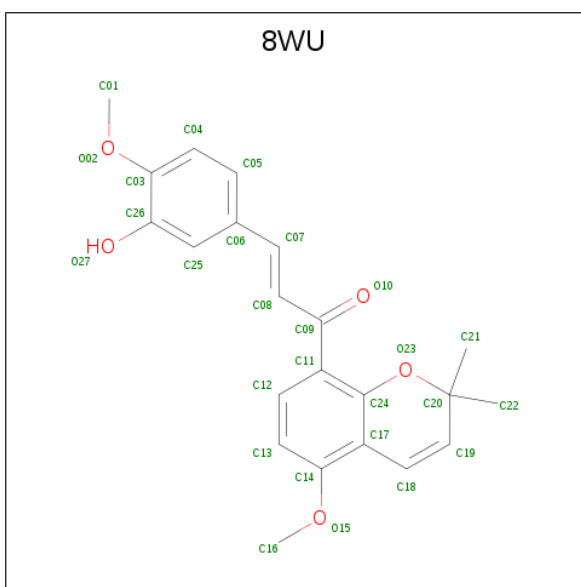
Mol	Chain	Residues	Atoms				ZeroOcc	AltConf
9	B	1	Total	C	N	O	P	0
			28	10	5	11	2	

- Molecule 10 is 2-(N-MORPHOLINO)-ETHANESULFONIC ACID (three-letter code: MES) (formula:  $C_6H_{13}NO_4S$ ).



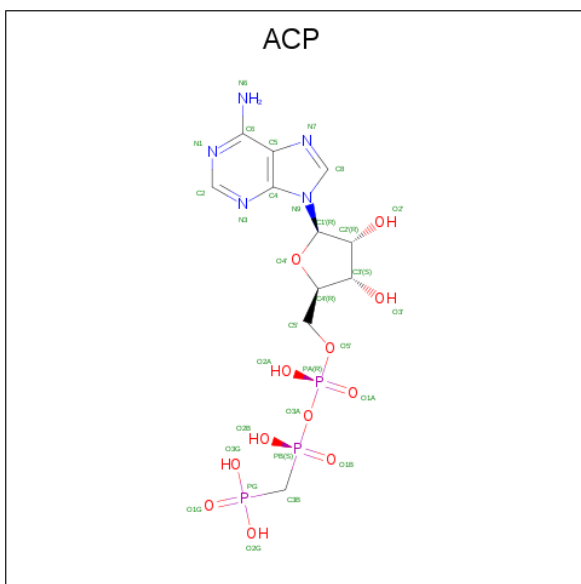
Mol	Chain	Residues	Atoms				ZeroOcc	AltConf
10	B	1	Total	C	N	O	S	0
			12	6	1	4	1	

- Molecule 11 is (E)-1-(5-methoxy-2,2-dimethyl-chromen-8-yl)-3-(4-methoxy-3-oxidanyl-phenyl)prop-2-en-1-one (three-letter code: 8WU) (formula:  $C_{22}H_{22}O_5$ ).



Mol	Chain	Residues	Atoms			ZeroOcc	AltConf
11	B	1	Total	C	O	0	0
			27	22	5		
11	D	1	Total	C	O	0	0
			27	22	5		

- Molecule 12 is PHOSPHOMETHYLPHOSPHONIC ACID ADENYLATE ESTER (three-letter code: ACP) (formula:  $C_{11}H_{18}N_5O_{12}P_3$ ).



- Molecule 13 is water.

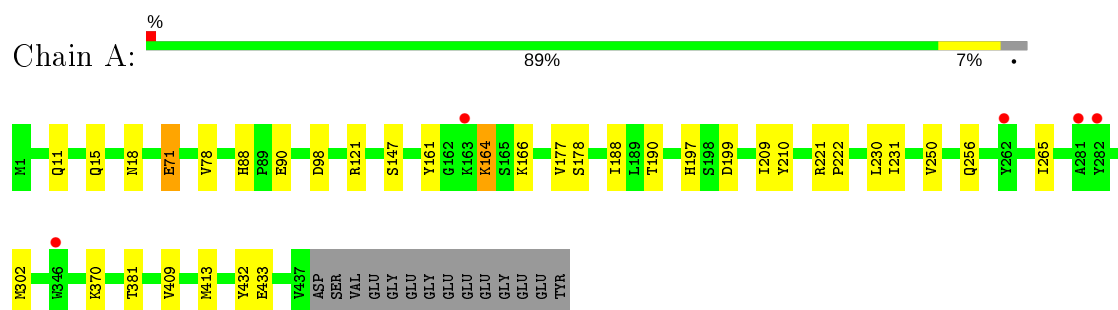
Mol	Chain	Residues	Atoms		ZeroOcc	AltConf
13	A	204	Total 204	O 204	0	0
13	B	145	Total 145	O 145	0	0
13	C	292	Total 292	O 292	0	0
13	D	81	Total 81	O 81	0	0
13	E	37	Total 37	O 37	0	0
13	F	99	Total 99	O 99	0	0



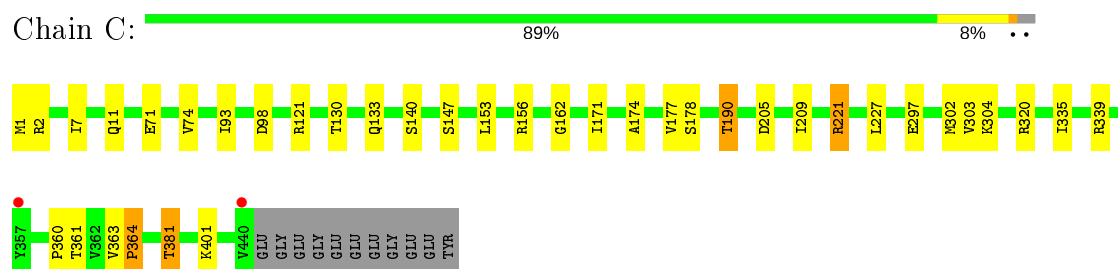
### 3 Residue-property plots [i](#)

These plots are drawn for all protein, RNA and DNA chains in the entry. The first graphic for a chain summarises the proportions of the various outlier classes displayed in the second graphic. The second graphic shows the sequence view annotated by issues in geometry and electron density. Residues are color-coded according to the number of geometric quality criteria for which they contain at least one outlier: green = 0, yellow = 1, orange = 2 and red = 3 or more. A red dot above a residue indicates a poor fit to the electron density ( $RSRZ > 2$ ). Stretches of 2 or more consecutive residues without any outlier are shown as a green connector. Residues present in the sample, but not in the model, are shown in grey.

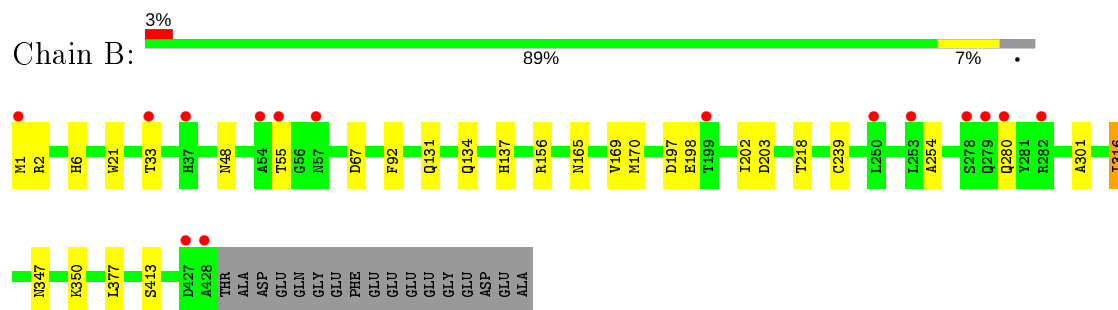
- Molecule 1: Tubulin alpha-1B chain



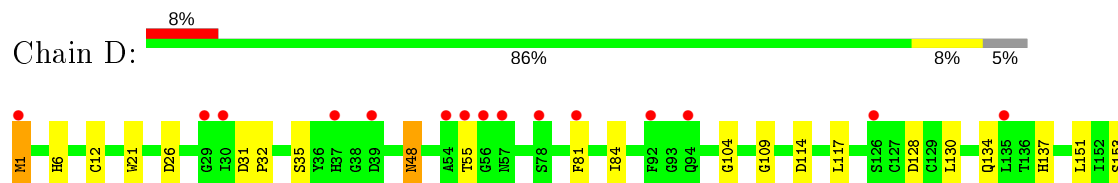
- Molecule 1: Tubulin alpha-1B chain

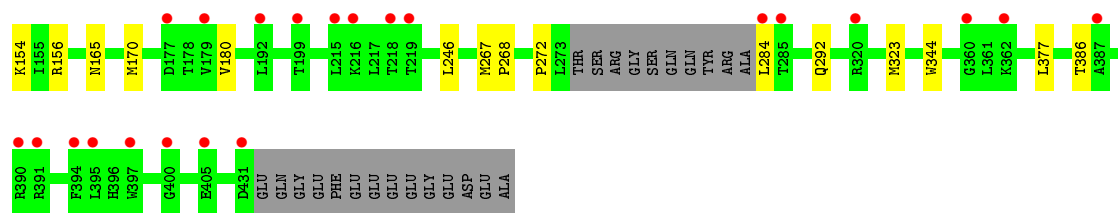


- Molecule 2: Tubulin beta chain

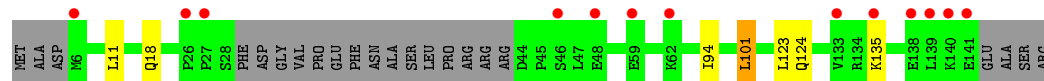
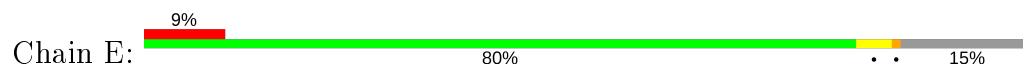


- Molecule 2: Tubulin beta chain

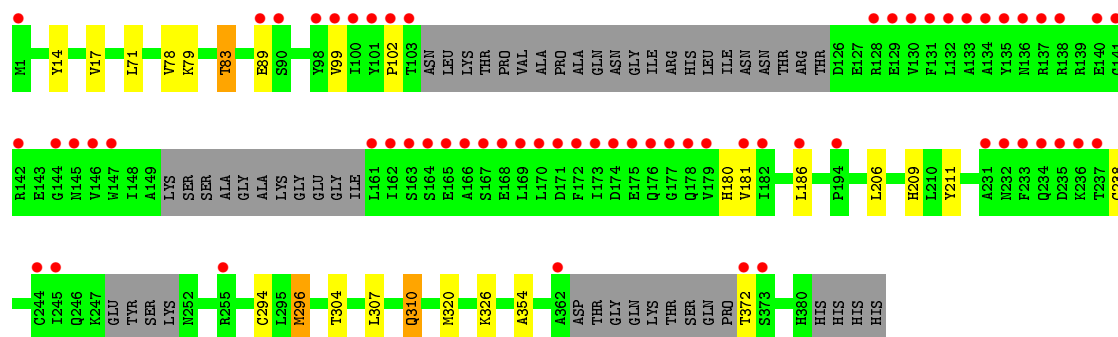
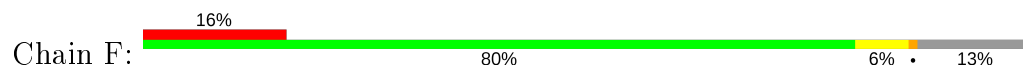




● Molecule 3: Stathmin-4



● Molecule 4: Tubulin tyrosine ligase



## 4 Data and refinement statistics

Property	Value	Source
Space group	P 21 21 21	Depositor
Cell constants a, b, c, $\alpha$ , $\beta$ , $\gamma$	105.54Å 158.20Å 181.80Å 90.00° 90.00° 90.00°	Depositor
Resolution (Å)	50.01 – 2.09 41.74 – 2.09	Depositor EDS
% Data completeness (in resolution range)	57.7 (50.01-2.09) 57.7 (41.74-2.09)	Depositor EDS
$R_{merge}$	(Not available)	Depositor
$R_{sym}$	(Not available)	Depositor
$\langle I/\sigma(I) \rangle$ <sup>1</sup>	2.08 (at 2.10Å)	Xtriage
Refinement program	REFMAC 5.8.0107	Depositor
R, $R_{free}$	0.209 , 0.254 0.208 , 0.254	Depositor DCC
$R_{free}$ test set	5217 reflections (5.04%)	wwPDB-VP
Wilson B-factor (Å <sup>2</sup> )	25.3	Xtriage
Anisotropy	0.133	Xtriage
Bulk solvent $k_{sol}$ (e/Å <sup>3</sup> ), $B_{sol}$ (Å <sup>2</sup> )	0.33 , 36.6	EDS
L-test for twinning <sup>2</sup>	$\langle  L  \rangle = 0.49$ , $\langle L^2 \rangle = 0.33$	Xtriage
Estimated twinning fraction	No twinning to report.	Xtriage
$F_o, F_c$ correlation	0.94	EDS
Total number of atoms	18366	wwPDB-VP
Average B, all atoms (Å <sup>2</sup> )	34.0	wwPDB-VP

Xtriage's analysis on translational NCS is as follows: *The largest off-origin peak in the Patterson function is 2.44% of the height of the origin peak. No significant pseudotranslation is detected.*

<sup>1</sup>Intensities estimated from amplitudes.

<sup>2</sup>Theoretical values of  $\langle |L| \rangle$ ,  $\langle L^2 \rangle$  for acentric reflections are 0.5, 0.333 respectively for untwinned datasets, and 0.375, 0.2 for perfectly twinned datasets.

## 5 Model quality [i](#)

### 5.1 Standard geometry [i](#)

Bond lengths and bond angles in the following residue types are not validated in this section: GDP, GOL, MG, CA, 8WU, GTP, ACP, MES

The Z score for a bond length (or angle) is the number of standard deviations the observed value is removed from the expected value. A bond length (or angle) with  $|Z| > 5$  is considered an outlier worth inspection. RMSZ is the root-mean-square of all Z scores of the bond lengths (or angles).

Mol	Chain	Bond lengths		Bond angles	
		RMSZ	$\# Z  > 5$	RMSZ	$\# Z  > 5$
1	A	0.43	0/3494	0.62	0/4743
1	C	0.44	0/3515	0.66	0/4772
2	B	0.46	0/3444	0.62	0/4664
2	D	0.42	0/3382	0.62	0/4581
3	E	0.36	0/1008	0.59	1/1337 (0.1%)
4	F	0.50	0/2806	0.65	0/3791
All	All	0.45	0/17649	0.63	1/23888 (0.0%)

There are no bond length outliers.

All (1) bond angle outliers are listed below:

Mol	Chain	Res	Type	Atoms	Z	Observed(°)	Ideal(°)
3	E	101	LEU	CA-CB-CG	6.01	129.13	115.30

There are no chirality outliers.

There are no planarity outliers.

### 5.2 Too-close contacts [i](#)

In the following table, the Non-H and H(model) columns list the number of non-hydrogen atoms and hydrogen atoms in the chain respectively. The H(added) column lists the number of hydrogen atoms added and optimized by MolProbity. The Clashes column lists the number of clashes within the asymmetric unit, whereas Symm-Clashes lists symmetry related clashes.

Mol	Chain	Non-H	H(model)	H(added)	Clashes	Symm-Clashes
1	A	3416	0	3331	17	0
1	C	3437	0	3348	22	0
2	B	3369	0	3250	13	0
2	D	3309	0	3189	16	0

*Continued on next page...*

*Continued from previous page...*

Mol	Chain	Non-H	H(model)	H(added)	Clashes	Symm-Clashes
3	E	1000	0	1018	5	0
4	F	2744	0	2709	10	0
5	A	32	0	12	0	0
5	C	32	0	12	0	0
5	D	32	0	12	1	0
6	A	1	0	0	0	0
6	B	1	0	0	0	0
6	C	1	0	0	0	0
6	D	1	0	0	0	0
7	A	1	0	0	0	0
7	C	1	0	0	0	0
8	A	6	0	8	0	0
9	B	28	0	12	0	0
10	B	12	0	13	2	0
11	B	27	0	0	0	0
11	D	27	0	0	0	0
12	F	31	0	14	0	0
13	A	204	0	0	2	0
13	B	145	0	0	0	0
13	C	292	0	0	3	0
13	D	81	0	0	1	0
13	E	37	0	0	0	0
13	F	99	0	0	0	0
All	All	18366	0	16928	76	0

The all-atom clashscore is defined as the number of clashes found per 1000 atoms (including hydrogen atoms). The all-atom clashscore for this structure is 2.

The worst 5 of 76 close contacts within the same asymmetric unit are listed below, sorted by their clash magnitude.

Atom-1	Atom-2	Interatomic distance (Å)	Clash overlap (Å)
4:F:79:LYS:O	4:F:83:THR:OG1	1.72	1.07
4:F:209:HIS:HB2	4:F:310:GLN:HG2	1.60	0.84
1:A:209:ILE:HD11	1:A:302:MET:SD	2.27	0.75
2:B:1:MET:HB2	2:B:131:GLN:HB3	1.76	0.66
1:C:71:GLU:HB2	1:C:98:ASP:HB3	1.79	0.65

There are no symmetry-related clashes.

## 5.3 Torsion angles

### 5.3.1 Protein backbone

In the following table, the Percentiles column shows the percent Ramachandran outliers of the chain as a percentile score with respect to all X-ray entries followed by that with respect to entries of similar resolution.

The Analysed column shows the number of residues for which the backbone conformation was analysed, and the total number of residues.

Mol	Chain	Analysed	Favoured	Allowed	Outliers	Percentiles	
1	A	435/451 (96%)	424 (98%)	11 (2%)	0	100	100
1	C	438/451 (97%)	428 (98%)	9 (2%)	1 (0%)	47	49
2	B	426/445 (96%)	409 (96%)	17 (4%)	0	100	100
2	D	417/445 (94%)	406 (97%)	11 (3%)	0	100	100
3	E	117/143 (82%)	115 (98%)	2 (2%)	0	100	100
4	F	324/384 (84%)	308 (95%)	15 (5%)	1 (0%)	41	41
All	All	2157/2319 (93%)	2090 (97%)	65 (3%)	2 (0%)	51	54

All (2) Ramachandran outliers are listed below:

Mol	Chain	Res	Type
4	F	102	PRO
1	C	364	PRO

### 5.3.2 Protein sidechains

In the following table, the Percentiles column shows the percent sidechain outliers of the chain as a percentile score with respect to all X-ray entries followed by that with respect to entries of similar resolution.

The Analysed column shows the number of residues for which the sidechain conformation was analysed, and the total number of residues.

Mol	Chain	Analysed	Rotameric	Outliers	Percentiles	
1	A	368/379 (97%)	359 (98%)	9 (2%)	49	53
1	C	371/379 (98%)	362 (98%)	9 (2%)	49	53
2	B	370/383 (97%)	361 (98%)	9 (2%)	49	53
2	D	364/383 (95%)	351 (96%)	13 (4%)	35	36
3	E	109/127 (86%)	107 (98%)	2 (2%)	59	65

*Continued on next page...*

*Continued from previous page...*

Mol	Chain	Analysed	Rotameric	Outliers	Percentiles	
4	F	301/342 (88%)	292 (97%)	9 (3%)	41	44
All	All	1883/1993 (94%)	1832 (97%)	51 (3%)	44	48

5 of 51 residues with a non-rotameric sidechain are listed below:

Mol	Chain	Res	Type
1	C	302	MET
2	D	26	ASP
4	F	296	MET
1	C	361	THR
2	D	48	ASN

Some sidechains can be flipped to improve hydrogen bonding and reduce clashes. 5 of 12 such sidechains are listed below:

Mol	Chain	Res	Type
2	B	245	GLN
2	B	375	GLN
3	E	18	GLN
2	B	165	ASN
2	D	292	GLN

### 5.3.3 RNA [i](#)

There are no RNA molecules in this entry.

## 5.4 Non-standard residues in protein, DNA, RNA chains [i](#)

There are no non-standard protein/DNA/RNA residues in this entry.

## 5.5 Carbohydrates [i](#)

There are no carbohydrates in this entry.

## 5.6 Ligand geometry [i](#)

Of 15 ligands modelled in this entry, 6 are monoatomic - leaving 9 for Mogul analysis.

In the following table, the Counts columns list the number of bonds (or angles) for which Mogul statistics could be retrieved, the number of bonds (or angles) that are observed in the model and

the number of bonds (or angles) that are defined in the Chemical Component Dictionary. The Link column lists molecule types, if any, to which the group is linked. The Z score for a bond length (or angle) is the number of standard deviations the observed value is removed from the expected value. A bond length (or angle) with  $|Z| > 2$  is considered an outlier worth inspection. RMSZ is the root-mean-square of all Z scores of the bond lengths (or angles).

Mol	Type	Chain	Res	Link	Bond lengths			Bond angles		
					Counts	RMSZ	$\# Z  > 2$	Counts	RMSZ	$\# Z  > 2$
9	GDP	B	501	6	24,30,30	1.18	2 (8%)	31,47,47	2.06	6 (19%)
5	GTP	A	501	6	26,34,34	1.23	2 (7%)	33,54,54	2.03	9 (27%)
12	ACP	F	401	-	27,33,33	1.80	7 (25%)	32,52,52	1.32	4 (12%)
10	MES	B	503	-	12,12,12	2.05	2 (16%)	14,16,16	7.40	8 (57%)
11	8WU	D	503	-	29,29,29	2.89	14 (48%)	41,42,42	1.48	7 (17%)
5	GTP	D	501	6	26,34,34	1.25	2 (7%)	33,54,54	2.03	8 (24%)
8	GOL	A	504	-	5,5,5	0.28	0	5,5,5	0.20	0
11	8WU	B	504	-	29,29,29	2.81	13 (44%)	41,42,42	1.54	7 (17%)
5	GTP	C	501	6	26,34,34	1.21	2 (7%)	33,54,54	1.91	6 (18%)

In the following table, the Chirals column lists the number of chiral outliers, the number of chiral centers analysed, the number of these observed in the model and the number defined in the Chemical Component Dictionary. Similar counts are reported in the Torsion and Rings columns. '-' means no outliers of that kind were identified.

Mol	Type	Chain	Res	Link	Chirals	Torsions	Rings
9	GDP	B	501	6	-	3/12/32/32	0/3/3/3
5	GTP	A	501	6	-	8/18/38/38	0/3/3/3
12	ACP	F	401	-	-	3/15/38/38	0/3/3/3
10	MES	B	503	-	-	4/6/14/14	0/1/1/1
11	8WU	D	503	-	-	7/13/24/24	0/3/3/3
5	GTP	D	501	6	-	5/18/38/38	0/3/3/3
8	GOL	A	504	-	-	2/4/4/4	-
11	8WU	B	504	-	-	5/13/24/24	0/3/3/3
5	GTP	C	501	6	-	9/18/38/38	0/3/3/3

The worst 5 of 44 bond length outliers are listed below:

Mol	Chain	Res	Type	Atoms	Z	Observed(Å)	Ideal(Å)
11	D	503	8WU	C18-C19	8.38	1.44	1.33
11	B	504	8WU	C18-C19	8.00	1.43	1.33
11	D	503	8WU	O23-C24	7.30	1.49	1.37
11	B	504	8WU	O23-C24	7.28	1.49	1.37

*Continued on next page...*



*Continued from previous page...*

Mol	Chain	Res	Type	Atoms	Z	Observed(Å)	Ideal(Å)
10	B	503	MES	C8-S	-6.23	1.68	1.77

The worst 5 of 55 bond angle outliers are listed below:

Mol	Chain	Res	Type	Atoms	Z	Observed(°)	Ideal(°)
10	B	503	MES	O1S-S-C8	-18.92	84.14	106.92
10	B	503	MES	O2S-S-C8	11.07	120.25	106.92
10	B	503	MES	O3S-S-O1S	-10.86	84.75	111.27
10	B	503	MES	O2S-S-O1S	-8.65	84.01	113.95
10	B	503	MES	O3S-S-C8	8.01	118.72	105.77

There are no chirality outliers.

5 of 46 torsion outliers are listed below:

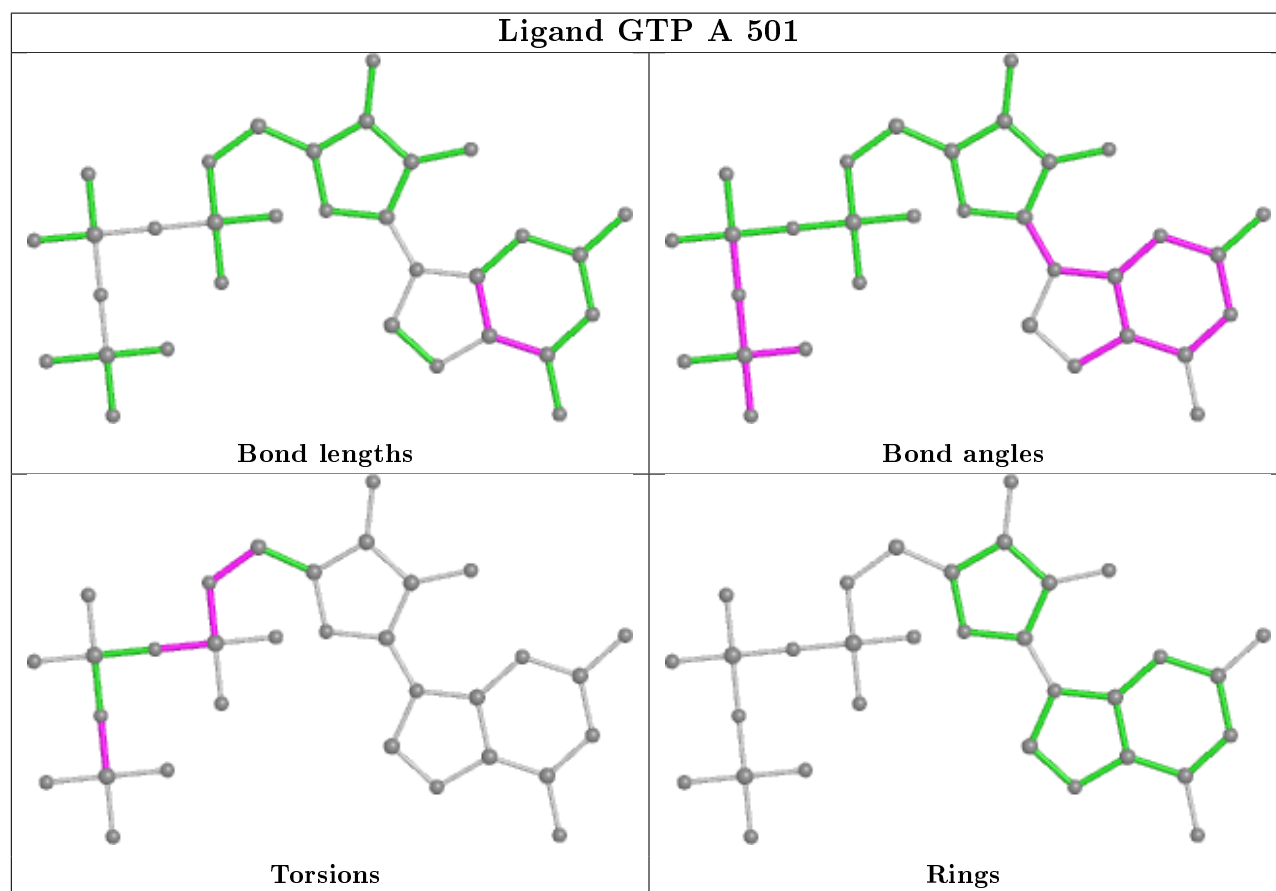
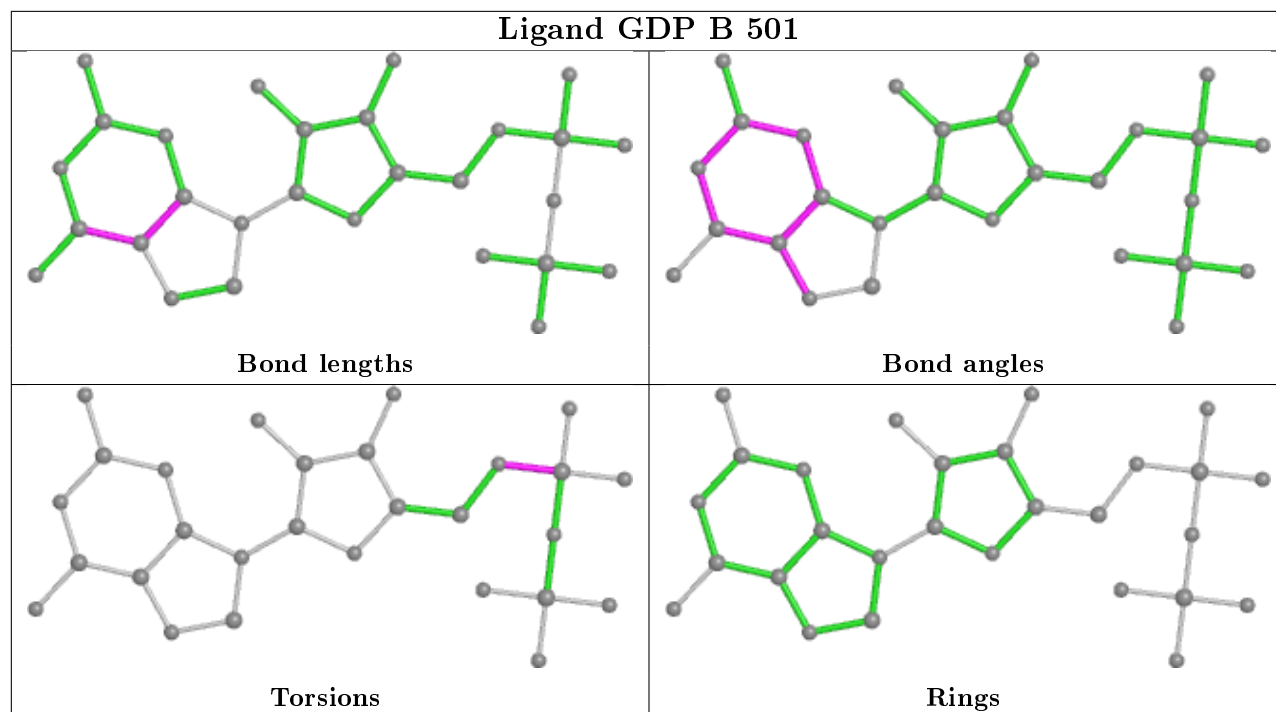
Mol	Chain	Res	Type	Atoms
9	B	501	GDP	C5'-O5'-PA-O1A
9	B	501	GDP	C5'-O5'-PA-O2A
5	A	501	GTP	C5'-O5'-PA-O1A
5	A	501	GTP	C5'-O5'-PA-O2A
10	B	503	MES	C8-C7-N4-C5

There are no ring outliers.

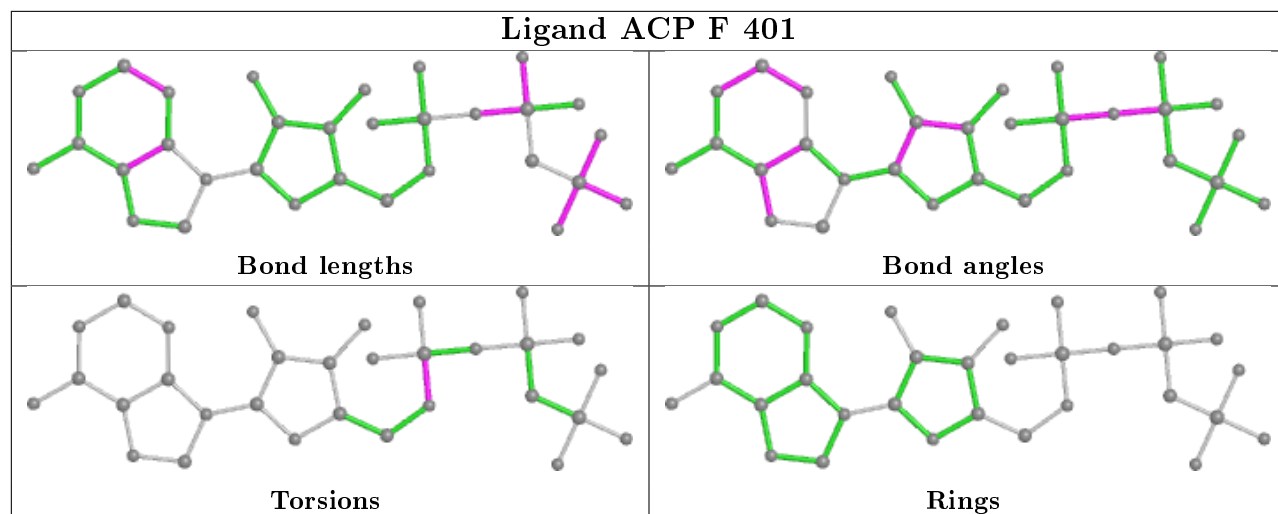
2 monomers are involved in 3 short contacts:

Mol	Chain	Res	Type	Clashes	Symm-Clashes
10	B	503	MES	2	0
5	D	501	GTP	1	0

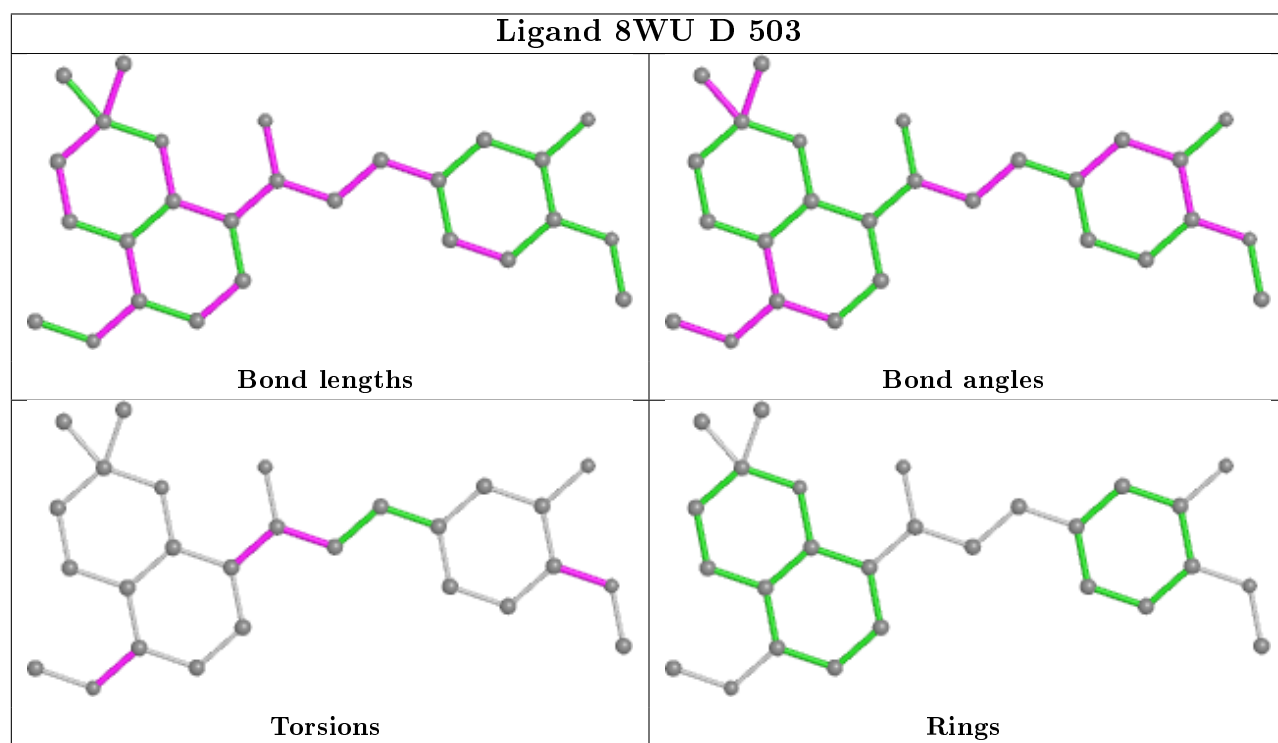
The following is a two-dimensional graphical depiction of Mogul quality analysis of bond lengths, bond angles, torsion angles, and ring geometry for all instances of the Ligand of Interest. In addition, ligands with molecular weight > 250 and outliers as shown on the validation Tables will also be included. For torsion angles, if less than 5% of the Mogul distribution of torsion angles is within 10 degrees of the torsion angle in question, then that torsion angle is considered an outlier. Any bond that is central to one or more torsion angles identified as an outlier by Mogul will be highlighted in the graph. For rings, the root-mean-square deviation (RMSD) between the ring in question and similar rings identified by Mogul is calculated over all ring torsion angles. If the average RMSD is greater than 60 degrees and the minimal RMSD between the ring in question and any Mogul-identified rings is also greater than 60 degrees, then that ring is considered an outlier. The outliers are highlighted in purple. The color gray indicates Mogul did not find sufficient equivalents in the CSD to analyse the geometry.

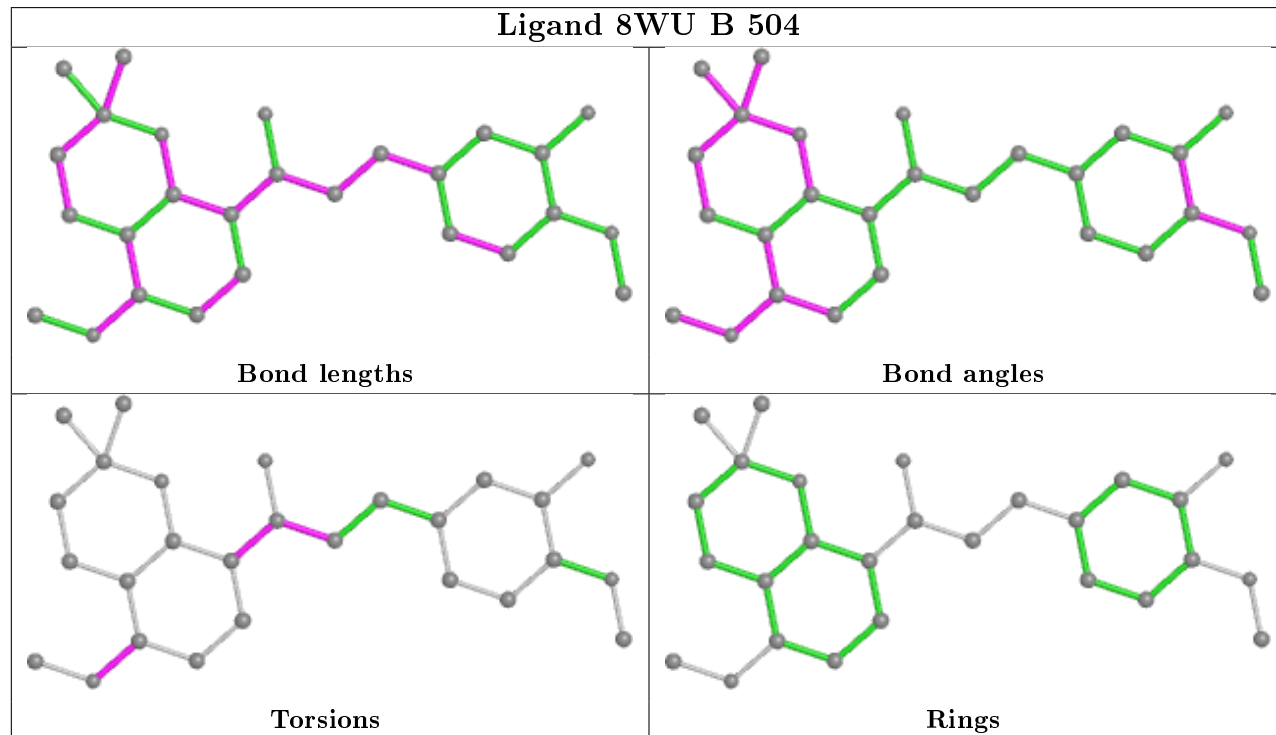
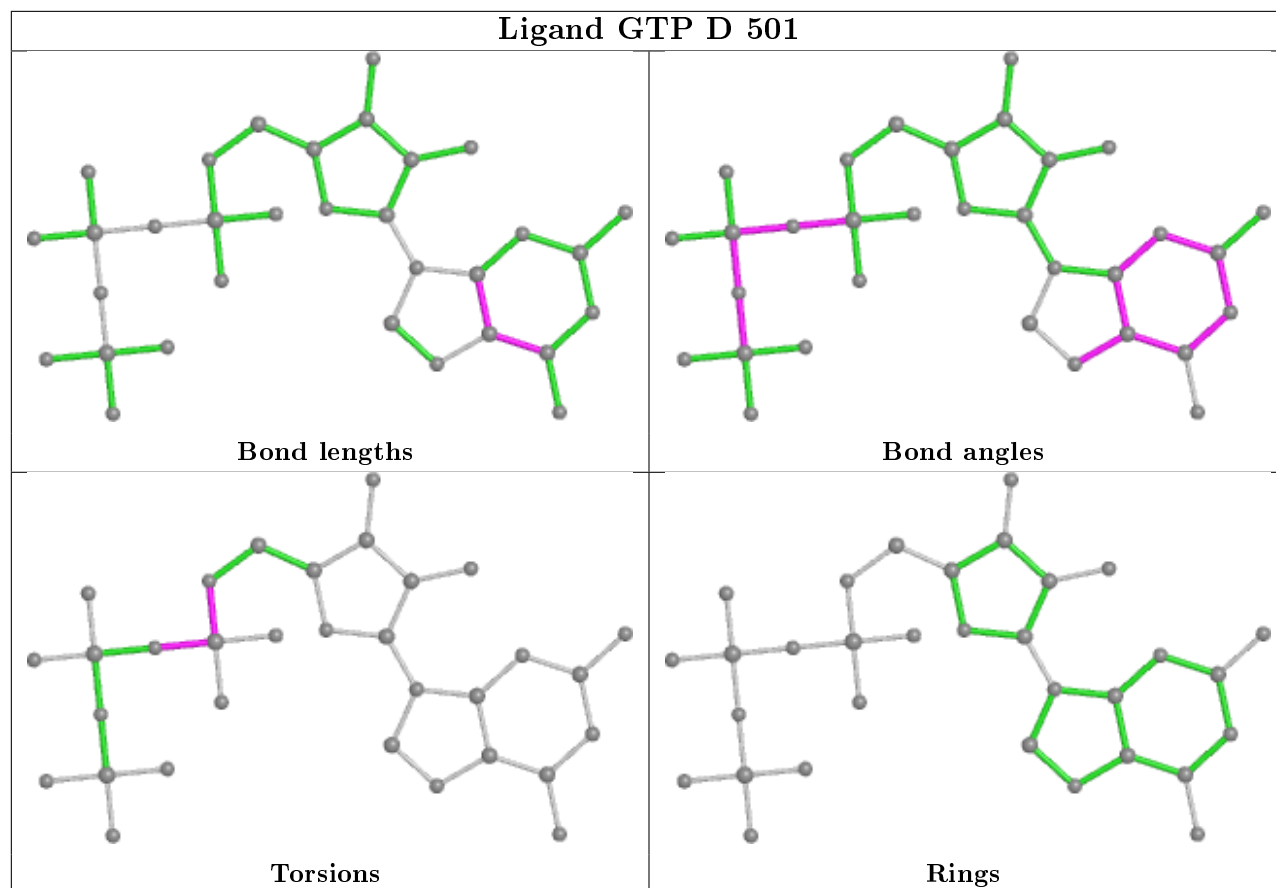


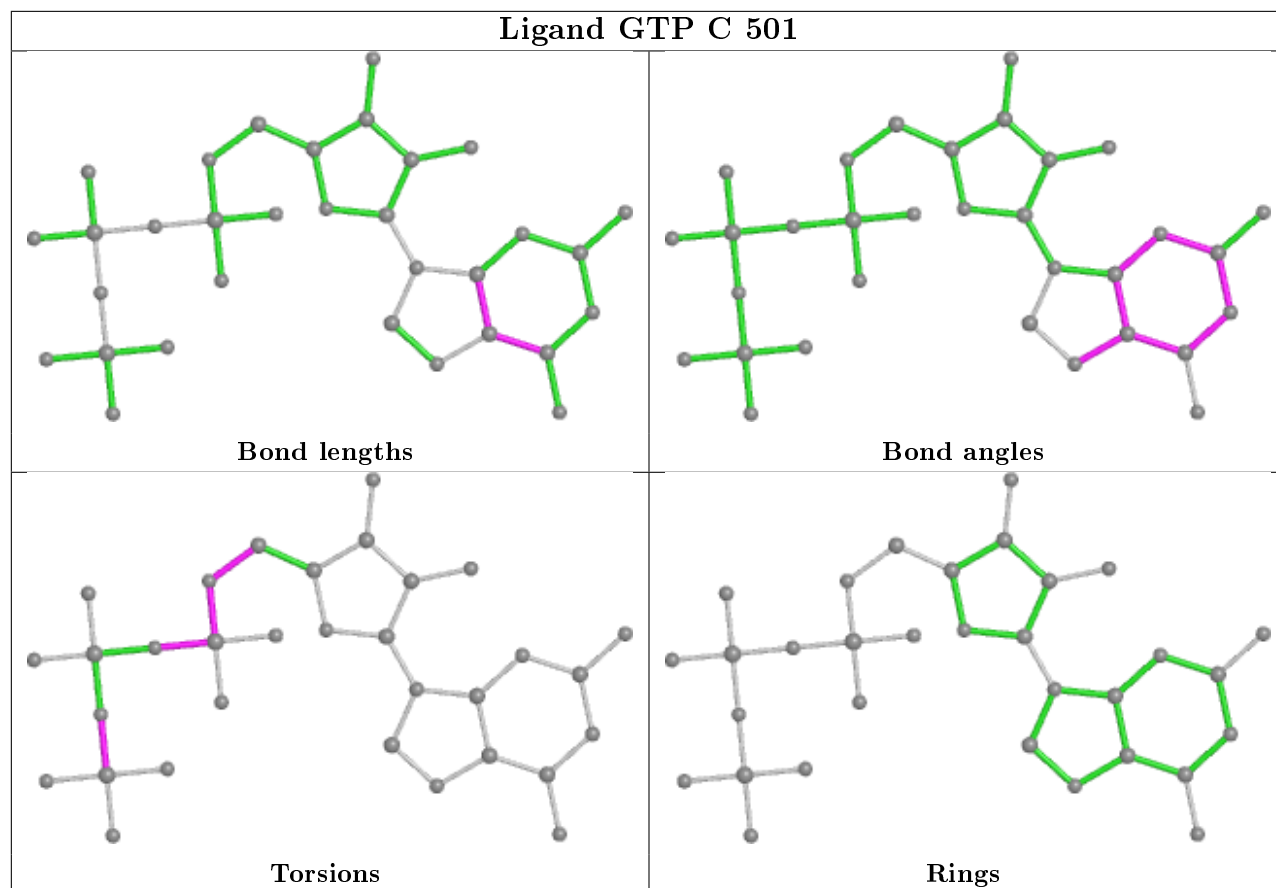
## Ligand ACP F 401



## Ligand 8WU D 503







## 5.7 Other polymers [i](#)

There are no such residues in this entry.

## 5.8 Polymer linkage issues [i](#)

There are no chain breaks in this entry.

## 6 Fit of model and data [i](#)

### 6.1 Protein, DNA and RNA chains [i](#)

In the following table, the column labelled ‘#RSRZ> 2’ contains the number (and percentage) of RSRZ outliers, followed by percent RSRZ outliers for the chain as percentile scores relative to all X-ray entries and entries of similar resolution. The OWAB column contains the minimum, median, 95<sup>th</sup> percentile and maximum values of the occupancy-weighted average B-factor per residue. The column labelled ‘Q< 0.9’ lists the number of (and percentage) of residues with an average occupancy less than 0.9.

Mol	Chain	Analysed	<RSRZ>	#RSRZ>2	OWAB(Å <sup>2</sup> )	Q<0.9
1	A	437/451 (96%)	-0.22	5 (1%) 80 84	13, 26, 45, 65	0
1	C	440/451 (97%)	-0.37	2 (0%) 91 92	8, 20, 39, 50	0
2	B	428/445 (96%)	-0.08	15 (3%) 44 50	11, 27, 51, 87	0
2	D	421/445 (94%)	0.45	37 (8%) 10 12	14, 42, 69, 84	0
3	E	121/143 (84%)	0.37	13 (10%) 6 7	23, 44, 72, 92	0
4	F	334/384 (86%)	0.69	63 (18%) 1 1	19, 46, 108, 123	0
All	All	2181/2319 (94%)	0.08	135 (6%) 20 25	8, 30, 71, 123	0

The worst 5 of 135 RSRZ outliers are listed below:

Mol	Chain	Res	Type	RSRZ
4	F	173	ILE	9.6
4	F	132	LEU	6.8
4	F	166	ALA	6.7
2	B	55	THR	6.4
4	F	172	PHE	6.4

### 6.2 Non-standard residues in protein, DNA, RNA chains [i](#)

There are no non-standard protein/DNA/RNA residues in this entry.

### 6.3 Carbohydrates [i](#)

There are no carbohydrates in this entry.

## 6.4 Ligands

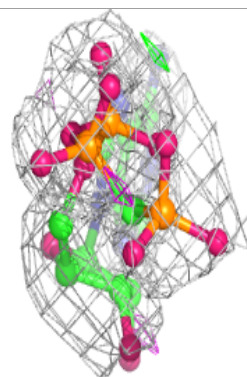
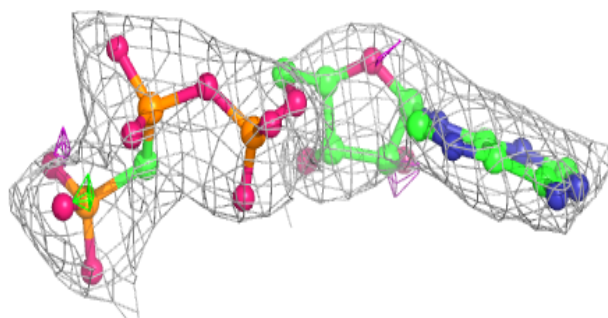
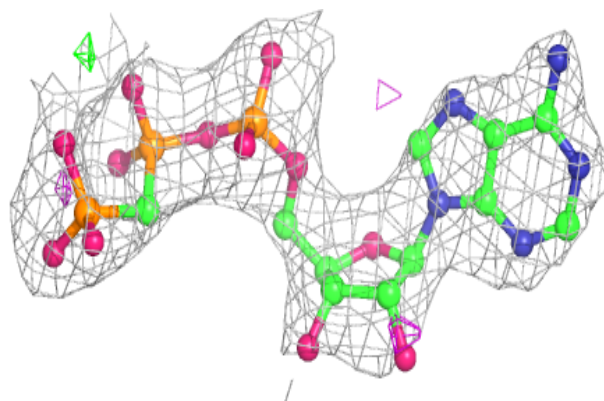
In the following table, the Atoms column lists the number of modelled atoms in the group and the number defined in the chemical component dictionary. The B-factors column lists the minimum, median, 95<sup>th</sup> percentile and maximum values of B factors of atoms in the group. The column labelled 'Q< 0.9' lists the number of atoms with occupancy less than 0.9.

Mol	Type	Chain	Res	Atoms	RSCC	RSR	B-factors(Å <sup>2</sup> )	Q<0.9
10	MES	B	503	12/12	0.93	0.13	58,59,61,61	0
12	ACP	F	401	31/31	0.93	0.12	66,68,74,75	0
5	GTP	D	501	32/32	0.93	0.10	29,34,39,41	0
8	GOL	A	504	6/6	0.93	0.13	35,36,38,39	0
11	8WU	D	503	27/27	0.95	0.11	24,31,36,37	0
11	8WU	B	504	27/27	0.96	0.17	24,26,27,28	0
6	MG	A	502	1/1	0.98	0.12	17,17,17,17	0
6	MG	B	502	1/1	0.98	0.09	12,12,12,12	0
7	CA	C	503	1/1	0.98	0.03	24,24,24,24	0
6	MG	D	502	1/1	0.98	0.05	22,22,22,22	0
5	GTP	A	501	32/32	0.98	0.12	12,13,14,14	0
9	GDP	B	501	28/28	0.99	0.08	14,16,17,17	0
6	MG	C	502	1/1	0.99	0.09	10,10,10,10	0
7	CA	A	503	1/1	0.99	0.04	28,28,28,28	0
5	GTP	C	501	32/32	0.99	0.11	10,12,13,13	0

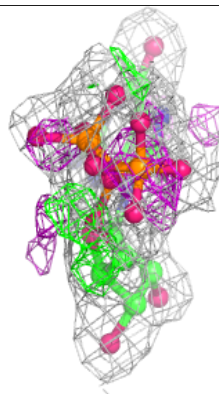
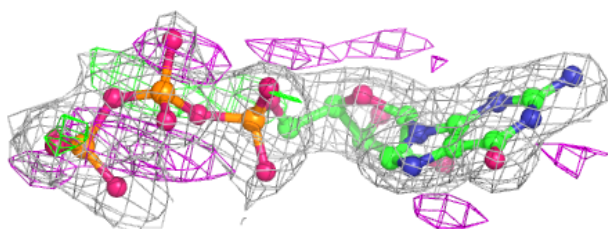
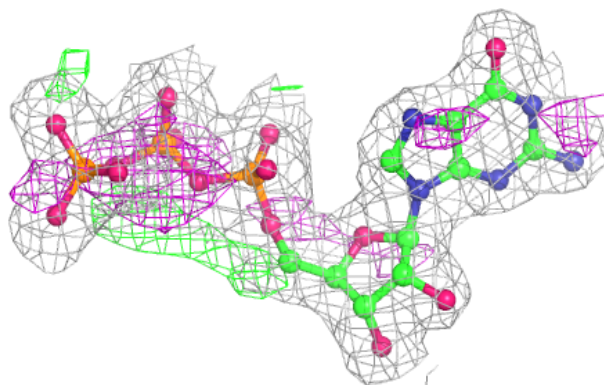
The following is a graphical depiction of the model fit to experimental electron density of all instances of the Ligand of Interest. In addition, ligands with molecular weight > 250 and outliers as shown on the geometry validation Tables will also be included. Each fit is shown from different orientation to approximate a three-dimensional view.

**Electron density around ACP F 401:**

$2mF_o-DF_c$  (at 0.7 rmsd) in gray  
 $mF_o-DF_c$  (at 3 rmsd) in purple (negative)  
and green (positive)

**Electron density around GTP D 501:**

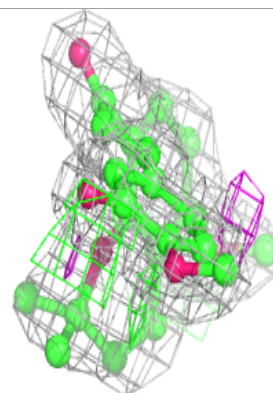
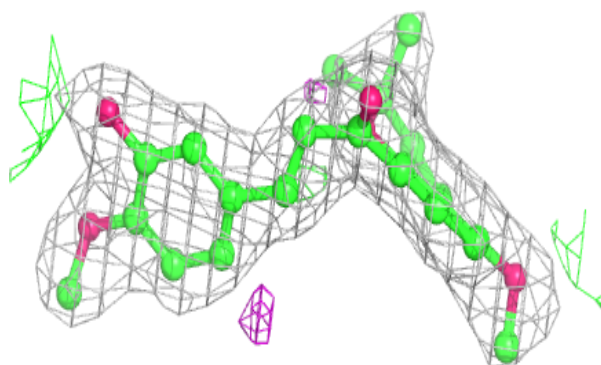
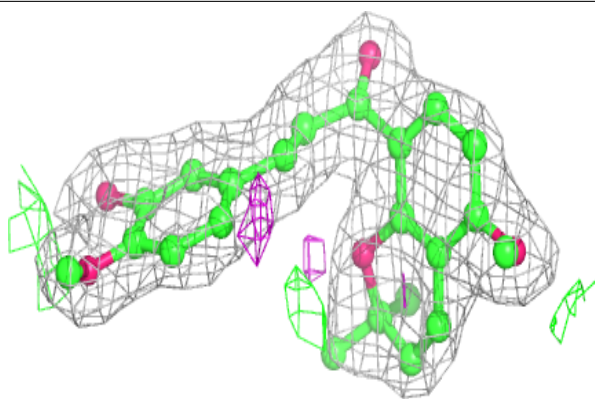
$2mF_o-DF_c$  (at 0.7 rmsd) in gray  
 $mF_o-DF_c$  (at 3 rmsd) in purple (negative)  
and green (positive)



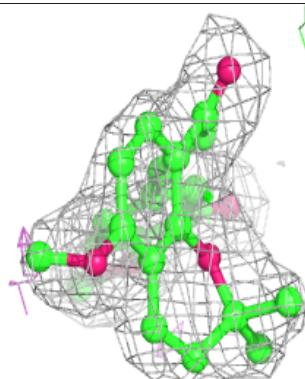
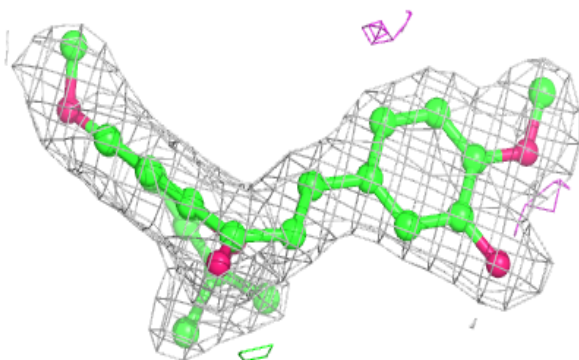
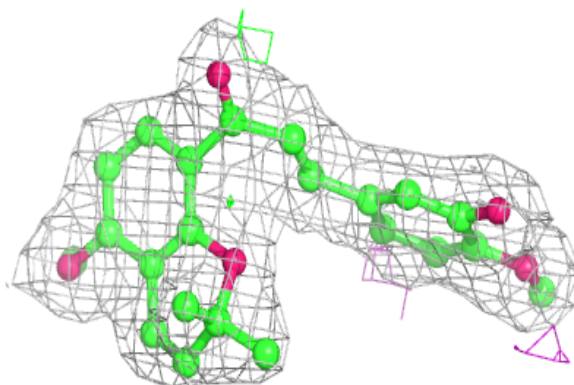


**Electron density around 8WU D 503:**

$2mF_o-DF_c$  (at 0.7 rmsd) in gray  
 $mF_o-DF_c$  (at 3 rmsd) in purple (negative)  
and green (positive)

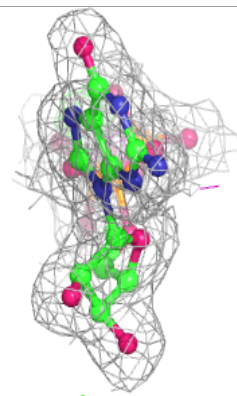
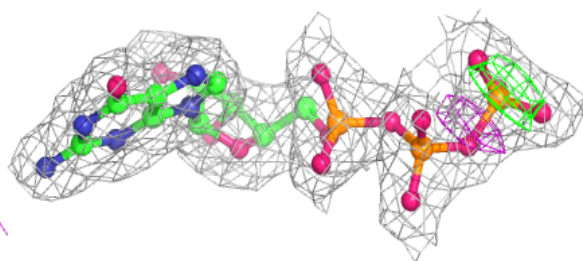
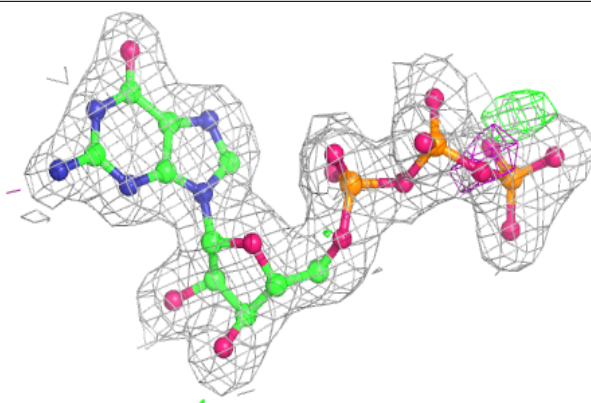
**Electron density around 8WU B 504:**

$2mF_o-DF_c$  (at 0.7 rmsd) in gray  
 $mF_o-DF_c$  (at 3 rmsd) in purple (negative)  
and green (positive)

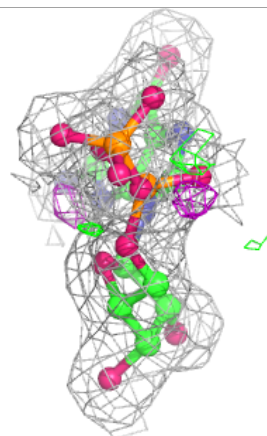
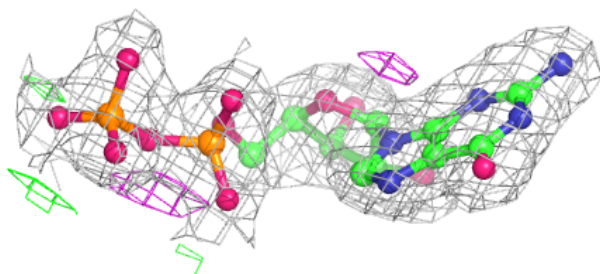
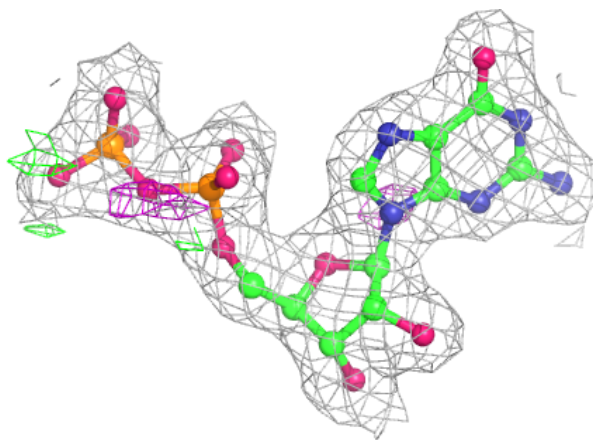


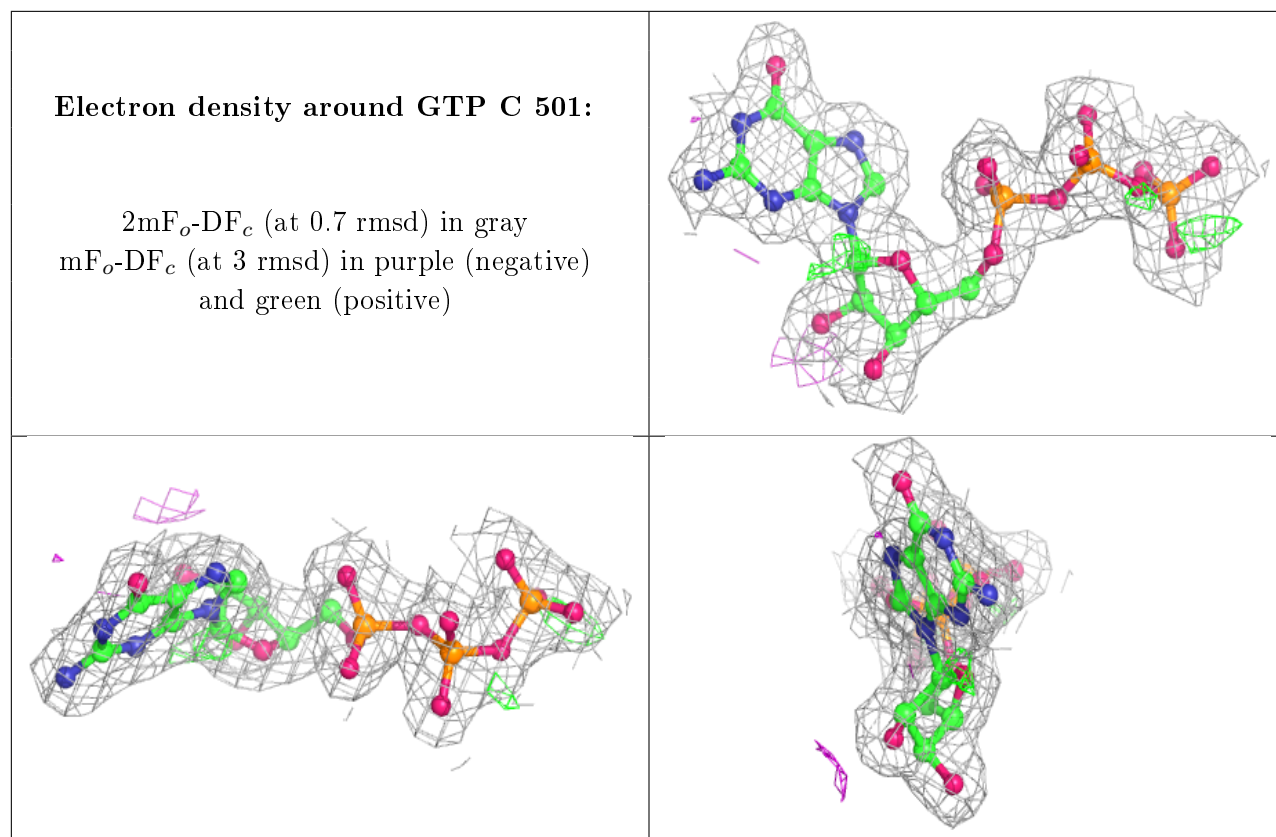
**Electron density around GTP A 501:**

$2mF_o-DF_c$  (at 0.7 rmsd) in gray  
 $mF_o-DF_c$  (at 3 rmsd) in purple (negative)  
and green (positive)

**Electron density around GDP B 501:**

$2mF_o-DF_c$  (at 0.7 rmsd) in gray  
 $mF_o-DF_c$  (at 3 rmsd) in purple (negative)  
and green (positive)





## 6.5 Other polymers [i](#)

There are no such residues in this entry.