



# Full wwPDB X-ray Structure Validation Report ⓘ

Apr 12, 2021 – 10:08 am BST

PDB ID : 6YRZ  
Title : Crystal structure of FAP et pH 8.5 after illumination at 150K  
Authors : Sorigue, D.; Legrand, P.; Blangy, S.; Beisson, F.; Arnoux, P.  
Deposited on : 2020-04-20  
Resolution : 1.82 Å(reported)

This is a Full wwPDB X-ray Structure Validation Report for a publicly released PDB entry.

We welcome your comments at [validation@mail.wwpdb.org](mailto:validation@mail.wwpdb.org)

A user guide is available at

<https://www.wwpdb.org/validation/2017/XrayValidationReportHelp>

with specific help available everywhere you see the ⓘ symbol.

---

The following versions of software and data (see [references ⓘ](#)) were used in the production of this report:

MolProbity : 4.02b-467  
Mogul : 1.8.5 (274361), CSD as541be (2020)  
Xtriage (Phenix) : 1.13  
EDS : 2.18  
buster-report : 1.1.7 (2018)  
Percentile statistics : 20191225.v01 (using entries in the PDB archive December 25th 2019)  
Refmac : 5.8.0158  
CCP4 : 7.0.044 (Gargrove)  
Ideal geometry (proteins) : Engh & Huber (2001)  
Ideal geometry (DNA, RNA) : Parkinson et al. (1996)  
Validation Pipeline (wwPDB-VP) : 2.18

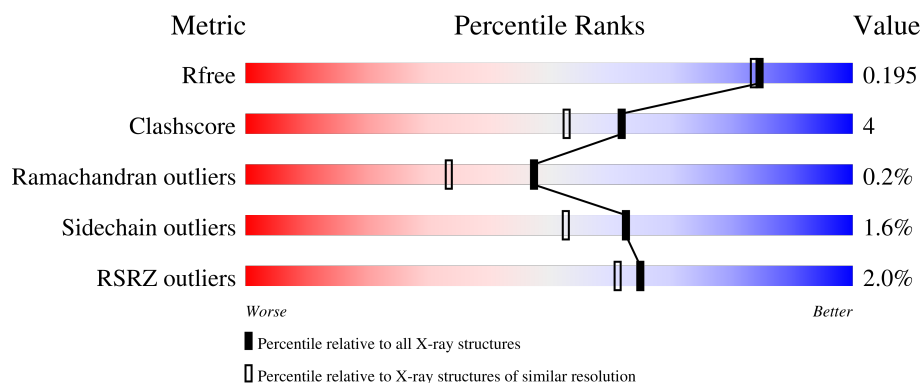
# 1 Overall quality at a glance

The following experimental techniques were used to determine the structure:

*X-RAY DIFFRACTION*


The reported resolution of this entry is 1.82 Å.

Percentile scores (ranging between 0-100) for global validation metrics of the entry are shown in the following graphic. The table shows the number of entries on which the scores are based.



Metric	Whole archive (#Entries)	Similar resolution (#Entries, resolution range(Å))
$R_{free}$	130704	7484 (1.84-1.80)
Clashscore	141614	8401 (1.84-1.80)
Ramachandran outliers	138981	8290 (1.84-1.80)
Sidechain outliers	138945	8290 (1.84-1.80)
RSRZ outliers	127900	7371 (1.84-1.80)

The table below summarises the geometric issues observed across the polymeric chains and their fit to the electron density. The red, orange, yellow and green segments of the lower bar indicate the fraction of residues that contain outliers for  $\geq 3$ , 2, 1 and 0 types of geometric quality criteria respectively. A grey segment represents the fraction of residues that are not modelled. The numeric value for each fraction is indicated below the corresponding segment, with a dot representing fractions  $\leq 5\%$ . The upper red bar (where present) indicates the fraction of residues that have poor fit to the electron density. The numeric value is given above the bar.

Mol	Chain	Length	Quality of chain
1	AAA	578	

## 2 Entry composition [i](#)

There are 7 unique types of molecules in this entry. The entry contains 4784 atoms, of which 0 are hydrogens and 0 are deuteriums.

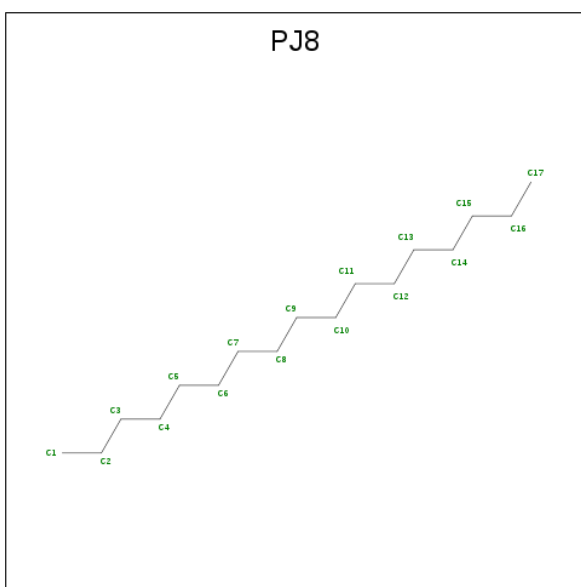
In the tables below, the ZeroOcc column contains the number of atoms modelled with zero occupancy, the AltConf column contains the number of residues with at least one atom in alternate conformation and the Trace column contains the number of residues modelled with at most 2 atoms.

- Molecule 1 is a protein called Fatty acid photodecarboxylase, chloroplastic.

Mol	Chain	Residues	Atoms					ZeroOcc	AltConf	Trace
1	AAA	564	Total	C	N	O	S	0	3	0
			4235	2649	760	811	15			

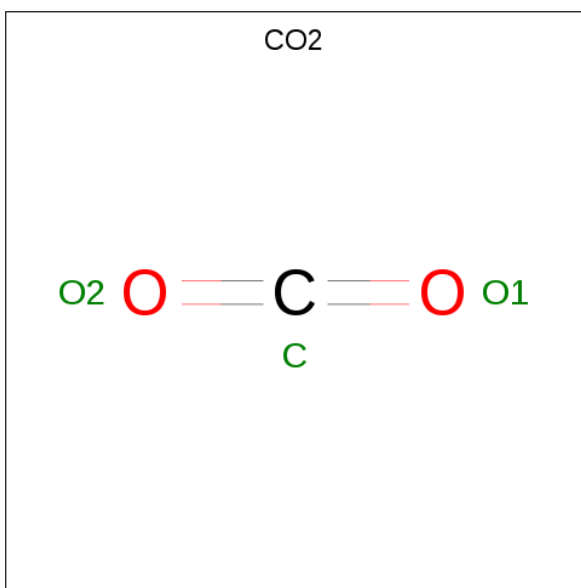
- Molecule 2 is FLAVIN-ADENINE DINUCLEOTIDE (three-letter code: FAD) (formula:  $C_{27}H_{33}N_9O_{15}P_2$ ) (labeled as "Ligand of Interest" by depositor).





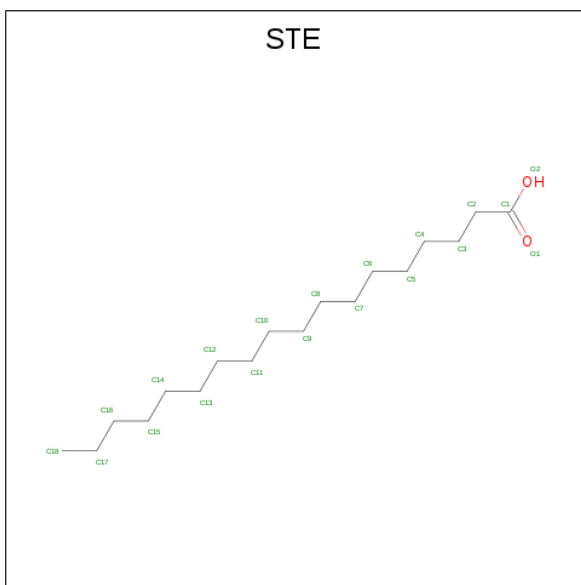
Mol	Chain	Residues	Atoms		ZeroOcc	AltConf
3	AAA	1	Total	C	0	0
			17	17		

- Molecule 4 is CARBON DIOXIDE (three-letter code: CO2) (formula: CO<sub>2</sub>).



Mol	Chain	Residues	Atoms			ZeroOcc	AltConf
4	AAA	1	Total	C	O	0	0
			3	1	2		

- Molecule 5 is STEARIC ACID (three-letter code: STE) (formula: C<sub>18</sub>H<sub>36</sub>O<sub>2</sub>).



Mol	Chain	Residues	Atoms			ZeroOcc	AltConf
5	AAA	1	Total	C	O	0	0
			20	18	2		

- Molecule 6 is PENTAETHYLENE GLYCOL (three-letter code: 1PE) (formula:  $C_{10}H_{22}O_6$ ).

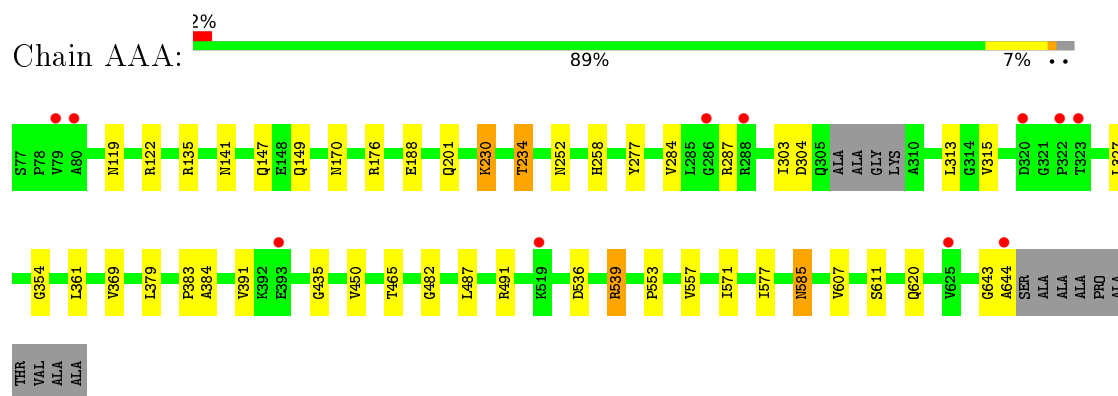


Mol	Chain	Residues	Atoms		ZeroOcc	AltConf
7	AAA	440	Total 440	O 440	0	0

### 3 Residue-property plots [i](#)

These plots are drawn for all protein, RNA, DNA and oligosaccharide chains in the entry. The first graphic for a chain summarises the proportions of the various outlier classes displayed in the second graphic. The second graphic shows the sequence view annotated by issues in geometry and electron density. Residues are color-coded according to the number of geometric quality criteria for which they contain at least one outlier: green = 0, yellow = 1, orange = 2 and red = 3 or more. A red dot above a residue indicates a poor fit to the electron density ( $RSRZ > 2$ ). Stretches of 2 or more consecutive residues without any outlier are shown as a green connector. Residues present in the sample, but not in the model, are shown in grey.

- Molecule 1: Fatty acid photodecarboxylase, chloroplastic



## 4 Data and refinement statistics

Property	Value	Source
Space group	I 2 2 2	Depositor
Cell constants a, b, c, $\alpha$ , $\beta$ , $\gamma$	90.47Å 104.56Å 156.90Å 90.00° 90.00° 90.00°	Depositor
Resolution (Å)	46.82 – 1.82 46.77 – 1.82	Depositor EDS
% Data completeness (in resolution range)	99.7 (46.82-1.82) 99.7 (46.77-1.82)	Depositor EDS
$R_{merge}$	0.09	Depositor
$R_{sym}$	(Not available)	Depositor
$\langle I/\sigma(I) \rangle$ <sup>1</sup>	1.03 (at 1.82Å)	Xtriage
Refinement program	REFMAC 5.8.0257	Depositor
R, $R_{free}$	0.158 , 0.188 0.169 , 0.195	Depositor DCC
$R_{free}$ test set	3312 reflections (5.00%)	wwPDB-VP
Wilson B-factor (Å <sup>2</sup> )	33.8	Xtriage
Anisotropy	0.055	Xtriage
Bulk solvent $k_{sol}$ (e/Å <sup>3</sup> ), $B_{sol}$ (Å <sup>2</sup> )	0.34 , 44.5	EDS
L-test for twinning <sup>2</sup>	$\langle  L  \rangle = 0.48$ , $\langle L^2 \rangle = 0.31$	Xtriage
Estimated twinning fraction	No twinning to report.	Xtriage
$F_o, F_c$ correlation	0.97	EDS
Total number of atoms	4784	wwPDB-VP
Average B, all atoms (Å <sup>2</sup> )	36.0	wwPDB-VP

Xtriage's analysis on translational NCS is as follows: *The largest off-origin peak in the Patterson function is 4.34% of the height of the origin peak. No significant pseudotranslation is detected.*

<sup>1</sup>Intensities estimated from amplitudes.

<sup>2</sup>Theoretical values of  $\langle |L| \rangle$ ,  $\langle L^2 \rangle$  for acentric reflections are 0.5, 0.333 respectively for untwinned datasets, and 0.375, 0.2 for perfectly twinned datasets.



## 5 Model quality [i](#)

### 5.1 Standard geometry [i](#)

Bond lengths and bond angles in the following residue types are not validated in this section: 1PE, STE, CO2, PJ8, FAD

The Z score for a bond length (or angle) is the number of standard deviations the observed value is removed from the expected value. A bond length (or angle) with  $|Z| > 5$  is considered an outlier worth inspection. RMSZ is the root-mean-square of all Z scores of the bond lengths (or angles).

Mol	Chain	Bond lengths		Bond angles	
		RMSZ	$\# Z  > 5$	RMSZ	$\# Z  > 5$
1	AAA	0.78	0/4330	0.89	1/5872 (0.0%)

There are no bond length outliers.

All (1) bond angle outliers are listed below:

Mol	Chain	Res	Type	Atoms	Z	Observed( $^{\circ}$ )	Ideal( $^{\circ}$ )
1	AAA	539	ARG	NE-CZ-NH1	7.54	124.07	120.30

There are no chirality outliers.

There are no planarity outliers.

### 5.2 Too-close contacts [i](#)

In the following table, the Non-H and H(model) columns list the number of non-hydrogen atoms and hydrogen atoms in the chain respectively. The H(added) column lists the number of hydrogen atoms added and optimized by MolProbity. The Clashes column lists the number of clashes within the asymmetric unit, whereas Symm-Clashes lists symmetry-related clashes.

Mol	Chain	Non-H	H(model)	H(added)	Clashes	Symm-Clashes
1	AAA	4235	0	4182	38	0
2	AAA	53	0	31	3	0
3	AAA	17	0	0	0	0
4	AAA	3	0	0	0	0
5	AAA	20	0	35	2	0
6	AAA	16	0	22	0	0
7	AAA	440	0	0	0	1
All	All	4784	0	4270	38	1

The all-atom clashscore is defined as the number of clashes found per 1000 atoms (including

hydrogen atoms). The all-atom clashscore for this structure is 4.

All (38) close contacts within the same asymmetric unit are listed below, sorted by their clash magnitude.

Atom-1	Atom-2	Interatomic distance (Å)	Clash overlap (Å)
1:AAA:122:ARG:HG3	5:AAA:804:STE:H31	1.54	0.88
1:AAA:135[A]:ARG:HH11	1:AAA:141:ASN:HD22	1.24	0.86
1:AAA:188:GLU:H	1:AAA:585:ASN:HD21	1.31	0.78
1:AAA:230:LYS:O	1:AAA:234:THR:CG2	2.33	0.75
1:AAA:135[A]:ARG:HH11	1:AAA:141:ASN:ND2	1.92	0.68
1:AAA:147:GLN:HE21	1:AAA:149:GLN:HE22	1.43	0.62
1:AAA:170:ASN:HB2	2:AAA:801:FAD:C5X	2.30	0.62
1:AAA:122:ARG:CG	5:AAA:804:STE:H31	2.30	0.62
1:AAA:303:ILE:HG21	1:AAA:369:VAL:HG11	1.83	0.59
1:AAA:230:LYS:O	1:AAA:234:THR:HG23	2.02	0.58
1:AAA:147:GLN:NE2	1:AAA:149:GLN:HE22	2.01	0.58
1:AAA:536:ASP:OD1	1:AAA:539:ARG:NH2	2.38	0.56
1:AAA:354:GLY:HA2	1:AAA:361:LEU:HD13	1.91	0.53
1:AAA:135[A]:ARG:NH1	1:AAA:141:ASN:HD22	1.99	0.52
1:AAA:188:GLU:H	1:AAA:585:ASN:ND2	2.03	0.52
1:AAA:135[A]:ARG:HA	1:AAA:141:ASN:HD21	1.75	0.51
1:AAA:135[B]:ARG:HA	1:AAA:141:ASN:HD21	1.76	0.51
1:AAA:176:ARG:H	1:AAA:252:ASN:ND2	2.09	0.50
1:AAA:176:ARG:H	1:AAA:252:ASN:HD21	1.60	0.49
1:AAA:384:ALA:HA	1:AAA:487:LEU:O	2.16	0.46
1:AAA:620:GLN:HB3	2:AAA:801:FAD:C2	2.45	0.46
1:AAA:230:LYS:O	1:AAA:234:THR:HG22	2.11	0.46
1:AAA:258:HIS:HD2	1:AAA:491:ARG:HH12	1.63	0.45
1:AAA:284:VAL:HB	1:AAA:287:ARG:HD2	1.99	0.45
1:AAA:135[A]:ARG:NH1	1:AAA:141:ASN:ND2	2.61	0.45
1:AAA:383:PRO:HB2	1:AAA:571:ILE:HD11	1.99	0.45
1:AAA:304:ASP:HB2	1:AAA:313:LEU:HD11	1.99	0.44
1:AAA:170:ASN:HB2	2:AAA:801:FAD:C4X	2.48	0.44
1:AAA:135[B]:ARG:HA	1:AAA:141:ASN:ND2	2.33	0.43
1:AAA:643:GLY:O	1:AAA:644:ALA:HB2	2.17	0.43
1:AAA:258:HIS:CD2	1:AAA:491:ARG:HH22	2.36	0.43
1:AAA:135[A]:ARG:HA	1:AAA:141:ASN:ND2	2.33	0.43
1:AAA:553:PRO:HB2	1:AAA:557:VAL:HB	2.02	0.42
1:AAA:391:VAL:HG13	1:AAA:482:GLY:HA2	2.01	0.42
1:AAA:379:LEU:C	1:AAA:379:LEU:HD23	2.41	0.42
1:AAA:435:GLY:HA3	1:AAA:450:VAL:O	2.20	0.42
1:AAA:607:VAL:HG11	1:AAA:611[B]:SER:OG	2.20	0.41
1:AAA:119:ASN:HB3	1:AAA:277:TYR:CD2	2.56	0.40

All (1) symmetry-related close contacts are listed below. The label for Atom-2 includes the symmetry operator and encoded unit-cell translations to be applied.

Atom-1	Atom-2	Interatomic distance (Å)	Clash overlap (Å)
7:AAA:1057:HOH:O	7:AAA:1256:HOH:O[4_565]	1.73	0.47

## 5.3 Torsion angles [i](#)

### 5.3.1 Protein backbone [i](#)

In the following table, the Percentiles column shows the percent Ramachandran outliers of the chain as a percentile score with respect to all X-ray entries followed by that with respect to entries of similar resolution.

The Analysed column shows the number of residues for which the backbone conformation was analysed, and the total number of residues.

Mol	Chain	Analysed	Favoured	Allowed	Outliers	Percentiles
1	AAA	563/578 (97%)	548 (97%)	14 (2%)	1 (0%)	47 33

All (1) Ramachandran outliers are listed below:

Mol	Chain	Res	Type
1	AAA	577	ILE

### 5.3.2 Protein sidechains [i](#)

In the following table, the Percentiles column shows the percent sidechain outliers of the chain as a percentile score with respect to all X-ray entries followed by that with respect to entries of similar resolution.

The Analysed column shows the number of residues for which the sidechain conformation was analysed, and the total number of residues.

Mol	Chain	Analysed	Rotameric	Outliers	Percentiles
1	AAA	439/441 (100%)	432 (98%)	7 (2%)	62 53

All (7) residues with a non-rotameric sidechain are listed below:

Mol	Chain	Res	Type
1	AAA	201	GLN
1	AAA	230	LYS

*Continued on next page...*

*Continued from previous page...*

Mol	Chain	Res	Type
1	AAA	234	THR
1	AAA	315	VAL
1	AAA	327	LEU
1	AAA	465	THR
1	AAA	585	ASN

Sometimes sidechains can be flipped to improve hydrogen bonding and reduce clashes. There are no such sidechains identified.

### 5.3.3 RNA [i](#)

There are no RNA molecules in this entry.

## 5.4 Non-standard residues in protein, DNA, RNA chains [i](#)

There are no non-standard protein/DNA/RNA residues in this entry.

## 5.5 Carbohydrates [i](#)

There are no monosaccharides in this entry.

## 5.6 Ligand geometry [i](#)

5 ligands are modelled in this entry.

In the following table, the Counts columns list the number of bonds (or angles) for which Mogul statistics could be retrieved, the number of bonds (or angles) that are observed in the model and the number of bonds (or angles) that are defined in the Chemical Component Dictionary. The Link column lists molecule types, if any, to which the group is linked. The Z score for a bond length (or angle) is the number of standard deviations the observed value is removed from the expected value. A bond length (or angle) with  $|Z| > 2$  is considered an outlier worth inspection. RMSZ is the root-mean-square of all Z scores of the bond lengths (or angles).

Mol	Type	Chain	Res	Link	Bond lengths			Bond angles		
					Counts	RMSZ	$\# Z  > 2$	Counts	RMSZ	$\# Z  > 2$
4	CO2	AAA	803	-	2,2,2	0.07	0	1,1,1	1.23	0
3	PJ8	AAA	802	-	16,16,16	0.83	0	15,15,15	0.95	1 (6%)
5	STE	AAA	804	-	16,19,19	0.59	0	15,19,19	0.30	0
6	1PE	AAA	805	-	15,15,15	0.23	0	14,14,14	0.19	0
2	FAD	AAA	801	-	51,58,58	1.02	1 (1%)	60,89,89	1.99	9 (15%)

In the following table, the Chirals column lists the number of chiral outliers, the number of chiral centers analysed, the number of these observed in the model and the number defined in the Chemical Component Dictionary. Similar counts are reported in the Torsion and Rings columns. '-' means no outliers of that kind were identified.

Mol	Type	Chain	Res	Link	Chirals	Torsions	Rings
3	PJ8	AAA	802	-	-	5/14/14/14	-
5	STE	AAA	804	-	-	8/15/17/17	-
6	1PE	AAA	805	-	-	9/13/13/13	-
2	FAD	AAA	801	-	-	3/30/50/50	0/6/6/6

All (1) bond length outliers are listed below:

Mol	Chain	Res	Type	Atoms	Z	Observed(Å)	Ideal(Å)
2	AAA	801	FAD	C4X-C10	5.16	1.44	1.38

All (10) bond angle outliers are listed below:

Mol	Chain	Res	Type	Atoms	Z	Observed(°)	Ideal(°)
2	AAA	801	FAD	C4-N3-C2	9.39	123.07	115.14
2	AAA	801	FAD	C4-C4X-C10	-6.29	115.78	119.95
2	AAA	801	FAD	C4X-C4-N3	-4.93	116.69	123.43
2	AAA	801	FAD	C10-C4X-N5	4.01	124.03	121.26
2	AAA	801	FAD	C1'-N10-C9A	3.38	120.95	118.29
2	AAA	801	FAD	C4X-C10-N10	-3.15	117.07	120.30
2	AAA	801	FAD	O4B-C1B-C2B	-2.60	103.12	106.93
2	AAA	801	FAD	O2P-P-O1P	2.58	125.01	112.24
3	AAA	802	PJ8	C8-C7-C6	2.22	125.72	114.42
2	AAA	801	FAD	O3'-C3'-C2'	2.05	113.77	108.81

There are no chirality outliers.

All (25) torsion outliers are listed below:

Mol	Chain	Res	Type	Atoms
6	AAA	805	1PE	C25-C15-OH6-C26
6	AAA	805	1PE	C24-C14-OH5-C25
6	AAA	805	1PE	OH4-C13-C23-OH3
6	AAA	805	1PE	OH2-C12-C22-OH3
5	AAA	804	STE	C6-C7-C8-C9
6	AAA	805	1PE	OH7-C16-C26-OH6
5	AAA	804	STE	C14-C15-C16-C17
3	AAA	802	PJ8	C9-C10-C11-C12
3	AAA	802	PJ8	C4-C5-C6-C7

*Continued on next page...*

*Continued from previous page...*

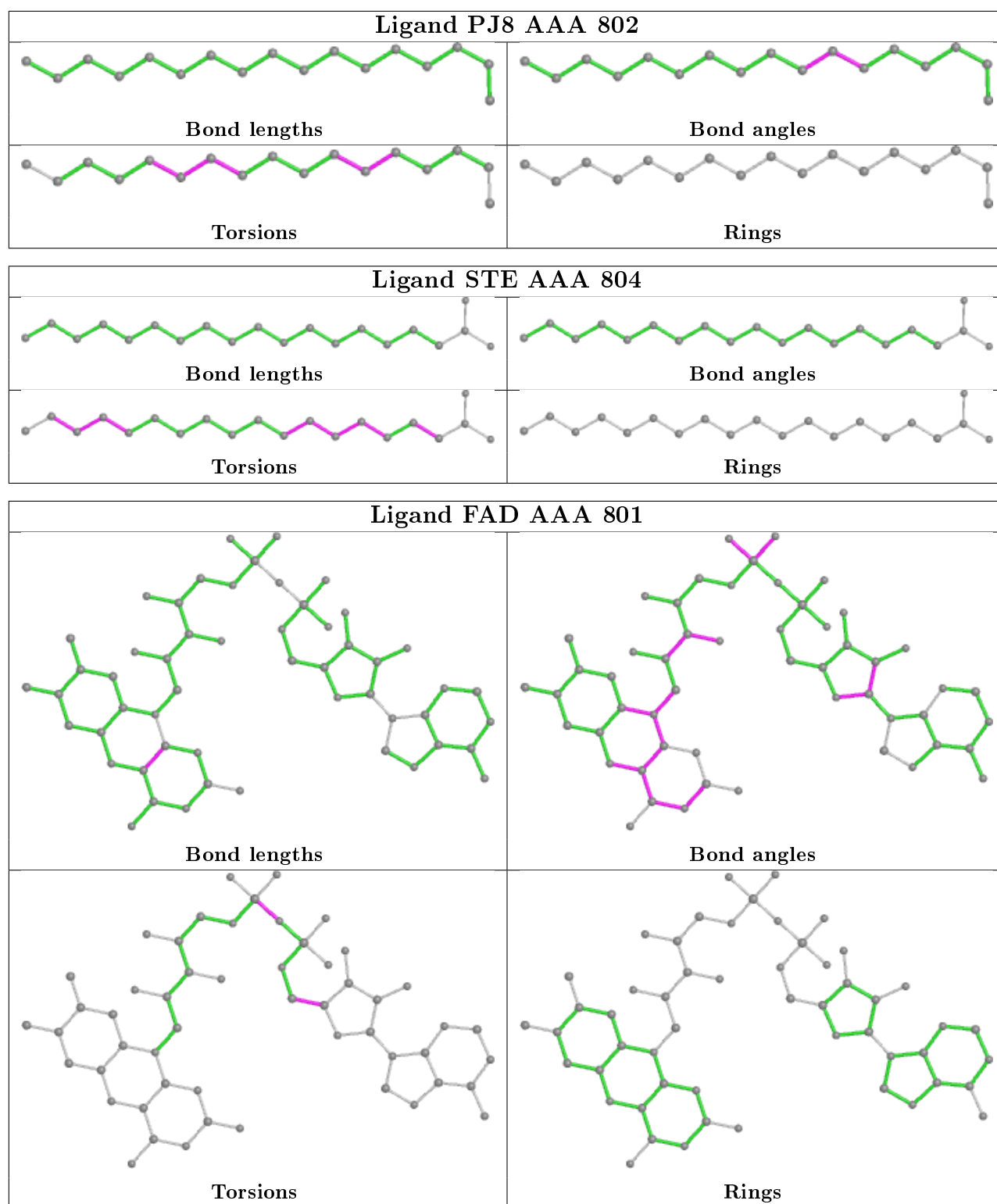
Mol	Chain	Res	Type	Atoms
2	AAA	801	FAD	PA-O3P-P-O5'
6	AAA	805	1PE	C12-C22-OH3-C23
2	AAA	801	FAD	O4B-C4B-C5B-O5B
6	AAA	805	1PE	C23-C13-OH4-C24
5	AAA	804	STE	C15-C16-C17-C18
3	AAA	802	PJ8	C11-C12-C13-C14
5	AAA	804	STE	C4-C5-C6-C7
5	AAA	804	STE	C5-C6-C7-C8
5	AAA	804	STE	C13-C14-C15-C16
3	AAA	802	PJ8	C10-C11-C12-C13
6	AAA	805	1PE	OH6-C15-C25-OH5
2	AAA	801	FAD	C3B-C4B-C5B-O5B
5	AAA	804	STE	C3-C4-C5-C6
5	AAA	804	STE	C1-C2-C3-C4
3	AAA	802	PJ8	C5-C6-C7-C8
6	AAA	805	1PE	OH5-C14-C24-OH4

There are no ring outliers.

2 monomers are involved in 5 short contacts:

Mol	Chain	Res	Type	Clashes	Symm-Clashes
5	AAA	804	STE	2	0
2	AAA	801	FAD	3	0

The following is a two-dimensional graphical depiction of Mogul quality analysis of bond lengths, bond angles, torsion angles, and ring geometry for all instances of the Ligand of Interest. In addition, ligands with molecular weight > 250 and outliers as shown on the validation Tables will also be included. For torsion angles, if less than 5% of the Mogul distribution of torsion angles is within 10 degrees of the torsion angle in question, then that torsion angle is considered an outlier. Any bond that is central to one or more torsion angles identified as an outlier by Mogul will be highlighted in the graph. For rings, the root-mean-square deviation (RMSD) between the ring in question and similar rings identified by Mogul is calculated over all ring torsion angles. If the average RMSD is greater than 60 degrees and the minimal RMSD between the ring in question and any Mogul-identified rings is also greater than 60 degrees, then that ring is considered an outlier. The outliers are highlighted in purple. The color gray indicates Mogul did not find sufficient equivalents in the CSD to analyse the geometry.



## 5.7 Other polymers ⓘ

There are no such residues in this entry.

## 5.8 Polymer linkage issues ⓘ

There are no chain breaks in this entry.



## 6 Fit of model and data [i](#)

### 6.1 Protein, DNA and RNA chains [i](#)

In the following table, the column labelled ‘#RSRZ> 2’ contains the number (and percentage) of RSRZ outliers, followed by percent RSRZ outliers for the chain as percentile scores relative to all X-ray entries and entries of similar resolution. The OWAB column contains the minimum, median, 95<sup>th</sup> percentile and maximum values of the occupancy-weighted average B-factor per residue. The column labelled ‘Q< 0.9’ lists the number of (and percentage) of residues with an average occupancy less than 0.9.

Mol	Chain	Analysed	<RSRZ>	#RSRZ>2	OWAB(Å <sup>2</sup> )	Q<0.9
1	AAA	564/578 (97%)	-0.19	11 (1%) 65 61	23, 33, 55, 79	0

All (11) RSRZ outliers are listed below:

Mol	Chain	Res	Type	RSRZ
1	AAA	288	ARG	3.0
1	AAA	79	VAL	3.0
1	AAA	80	ALA	2.9
1	AAA	323	THR	2.8
1	AAA	644	ALA	2.7
1	AAA	519	LYS	2.5
1	AAA	393	GLU	2.4
1	AAA	322	PRO	2.3
1	AAA	320	ASP	2.2
1	AAA	286	GLY	2.2
1	AAA	625	VAL	2.1

### 6.2 Non-standard residues in protein, DNA, RNA chains [i](#)

There are no non-standard protein/DNA/RNA residues in this entry.

### 6.3 Carbohydrates [i](#)

There are no monosaccharides in this entry.

### 6.4 Ligands [i](#)

In the following table, the Atoms column lists the number of modelled atoms in the group and the number defined in the chemical component dictionary. The B-factors column lists the minimum,

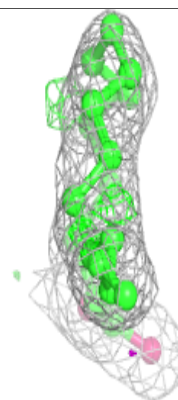
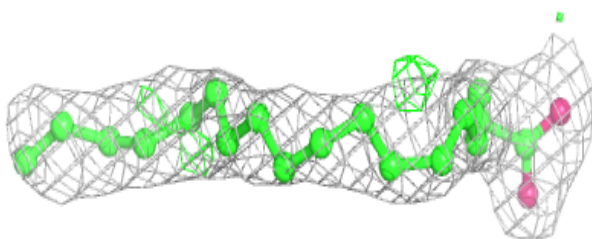
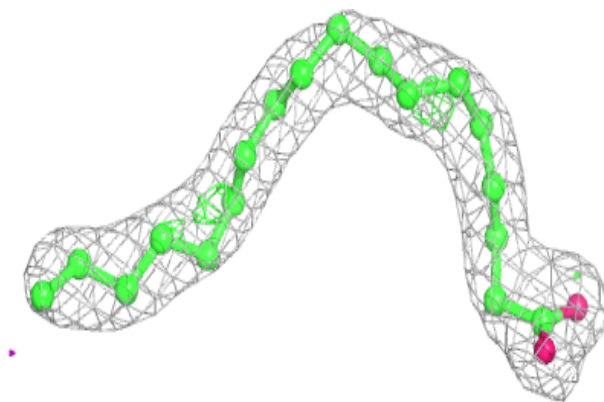
median, 95<sup>th</sup> percentile and maximum values of B factors of atoms in the group. The column labelled 'Q< 0.9' lists the number of atoms with occupancy less than 0.9.

Mol	Type	Chain	Res	Atoms	RSCC	RSR	B-factors(Å <sup>2</sup> )	Q<0.9
5	STE	AAA	804	20/20	0.92	0.13	43,54,61,62	0
3	PJ8	AAA	802	17/17	0.93	0.12	29,36,49,50	0
6	1PE	AAA	805	16/16	0.94	0.19	50,57,61,66	0
4	CO2	AAA	803	3/3	0.97	0.13	49,49,59,70	0
2	FAD	AAA	801	53/53	0.98	0.11	22,25,32,35	0

The following is a graphical depiction of the model fit to experimental electron density of all instances of the Ligand of Interest. In addition, ligands with molecular weight > 250 and outliers as shown on the geometry validation Tables will also be included. Each fit is shown from different orientation to approximate a three-dimensional view.

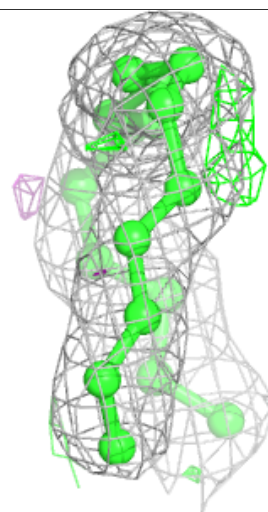
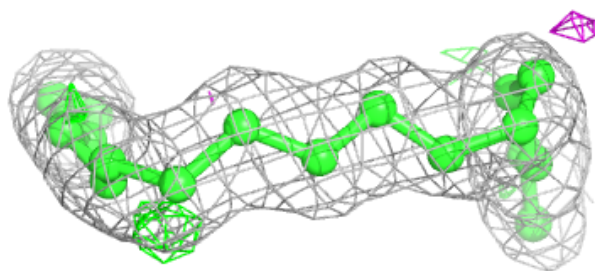
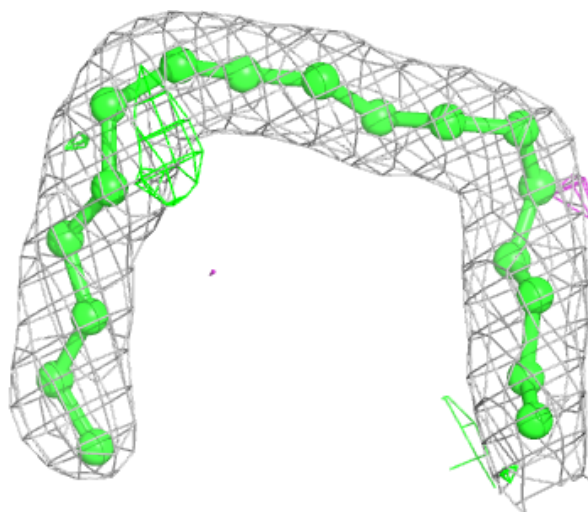
**Electron density around STE AAA 804:**

2mF<sub>o</sub>-DF<sub>c</sub> (at 0.7 rmsd) in gray  
mF<sub>o</sub>-DF<sub>c</sub> (at 3 rmsd) in purple (negative)  
and green (positive)



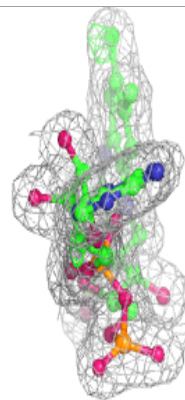
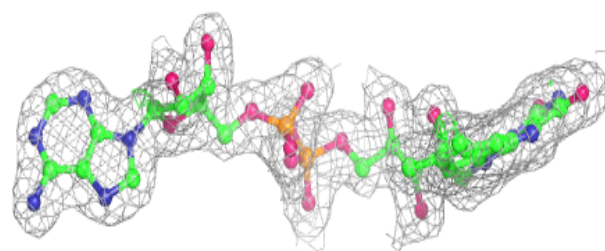
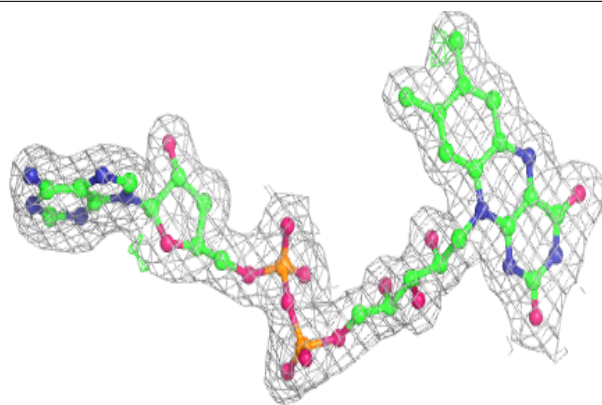
**Electron density around PJ8 AAA 802:**

$2mF_o-DF_c$  (at 0.7 rmsd) in gray  
 $mF_o-DF_c$  (at 3 rmsd) in purple (negative)  
and green (positive)



**Electron density around FAD AAA 801:**

$2mF_o - DF_c$  (at 0.7 rmsd) in gray  
 $mF_o - DF_c$  (at 3 rmsd) in purple (negative)  
and green (positive)



## 6.5 Other polymers [i](#)

There are no such residues in this entry.