



wwPDB X-ray Structure Validation Summary Report ⓘ

Jun 4, 2020 – 11:45 pm BST

PDB ID : 1YST
Title : STRUCTURE OF THE PHOTOCHEMICAL REACTION CENTER OF A SPHEROIDENE CONTAINING PURPLE BACTERIUM, RHODOBACTER SPHAEROIDES Y, AT 3 ANGSTROMS RESOLUTION
Authors : Arnoux, B.; Gaucher, J.F.; Ducruix, A.; Reiss-Husson, F.
Deposited on : 1994-12-07
Resolution : 3.00 Å(reported)

This is a wwPDB X-ray Structure Validation Summary Report for a publicly released PDB entry.

We welcome your comments at validation@mail.wwpdb.org

A user guide is available at

<https://www.wwpdb.org/validation/2017/XrayValidationReportHelp>

with specific help available everywhere you see the ⓘ symbol.

The following versions of software and data (see [references ⓘ](#)) were used in the production of this report:

MolProbity : 4.02b-467
Mogul : 1.8.5 (274361), CSD as541be (2020)
Xtriage (Phenix) : **NOT EXECUTED**
EDS : **NOT EXECUTED**
buster-report : 1.1.7 (2018)
Percentile statistics : 20191225.v01 (using entries in the PDB archive December 25th 2019)
Ideal geometry (proteins) : Engh & Huber (2001)
Ideal geometry (DNA, RNA) : Parkinson et al. (1996)
Validation Pipeline (wwPDB-VP) : 2.11

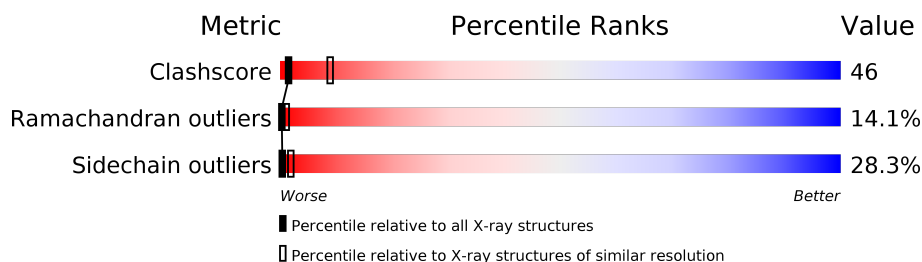
1 Overall quality at a glance

The following experimental techniques were used to determine the structure:

X-RAY DIFFRACTION

The reported resolution of this entry is 3.00 Å.

Percentile scores (ranging between 0-100) for global validation metrics of the entry are shown in the following graphic. The table shows the number of entries on which the scores are based.



Metric	Whole archive (#Entries)	Similar resolution (#Entries, resolution range(Å))
Clashscore	141614	2416 (3.00-3.00)
Ramachandran outliers	138981	2333 (3.00-3.00)
Sidechain outliers	138945	2336 (3.00-3.00)

The table below summarises the geometric issues observed across the polymeric chains and their fit to the electron density. The red, orange, yellow and green segments on the lower bar indicate the fraction of residues that contain outliers for ≥ 3 , 2, 1 and 0 types of geometric quality criteria respectively. A grey segment represents the fraction of residues that are not modelled. The numeric value for each fraction is indicated below the corresponding segment, with a dot representing fractions $\leq 5\%$.

Note EDS was not executed.

Mol	Chain	Length	Quality of chain
1	L	273	
2	M	305	
3	H	260	

The following table lists non-polymeric compounds, carbohydrate monomers and non-standard residues in protein, DNA, RNA chains that are outliers for geometric or electron-density-fit criteria:

Mol	Type	Chain	Res	Chirality	Geometry	Clashes	Electron density
4	BCL	L	274	X	-	X	-
4	BCL	M	307	X	-	X	-

Continued on next page...

Continued from previous page...

Mol	Type	Chain	Res	Chirality	Geometry	Clashes	Electron density
5	BPH	L	276	X	-	X	-
5	BPH	M	309	X	-	-	-

2 Entry composition [i](#)

There are 8 unique types of molecules in this entry. The entry contains 7136 atoms, of which 0 are hydrogens and 0 are deuteriums.

In the tables below, the ZeroOcc column contains the number of atoms modelled with zero occupancy, the AltConf column contains the number of residues with at least one atom in alternate conformation and the Trace column contains the number of residues modelled with at most 2 atoms.

- Molecule 1 is a protein called PHOTOSYNTHETIC REACTION CENTER (L SUBUNIT).

Mol	Chain	Residues	Atoms					ZeroOcc	AltConf	Trace
			Total	C	N	O	S			
1	L	273	2181	1476	345	352	8	0	0	0

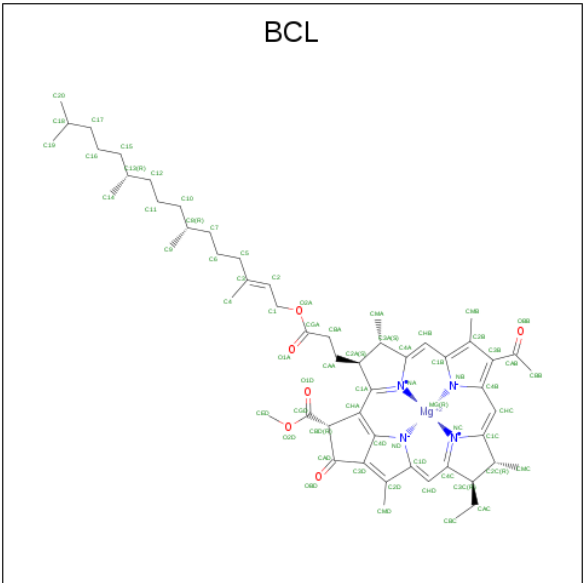
- Molecule 2 is a protein called PHOTOSYNTHETIC REACTION CENTER (M SUBUNIT).

Mol	Chain	Residues	Atoms					ZeroOcc	AltConf	Trace
			Total	C	N	O	S			
2	M	305	2429	1619	397	401	12	0	0	0

- Molecule 3 is a protein called PHOTOSYNTHETIC REACTION CENTER (H SUBUNIT).

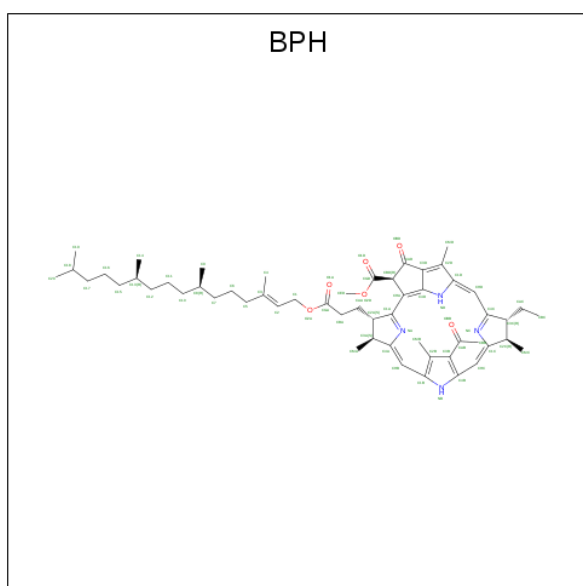
Mol	Chain	Residues	Atoms					ZeroOcc	AltConf	Trace
			Total	C	N	O	S			
3	H	260	1973	1264	335	363	11	0	0	0

- Molecule 4 is BACTERIOCHLOROPHYLL A (three-letter code: BCL) (formula: C₅₅H₇₄MgN₄O₆).



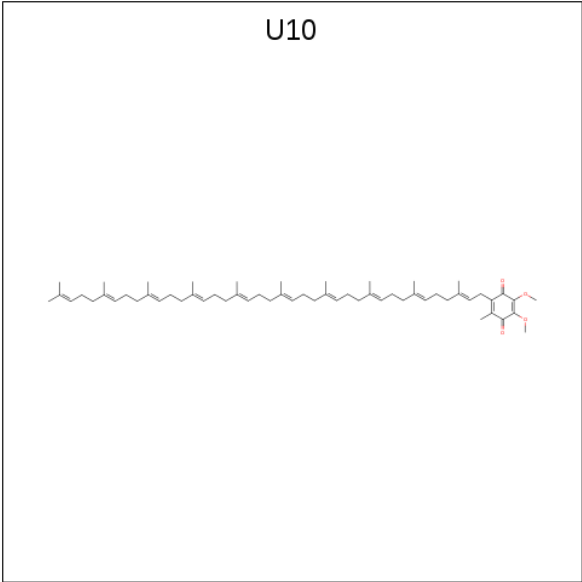
Mol	Chain	Residues	Atoms					ZeroOcc	AltConf
4	L	1	Total 66	C 55	Mg 1	N 4	O 6	0	0
4	L	1	Total 66	C 55	Mg 1	N 4	O 6	0	0
4	M	1	Total 66	C 55	Mg 1	N 4	O 6	0	0
4	M	1	Total 66	C 55	Mg 1	N 4	O 6	0	0

- Molecule 5 is BACTERIOPHEOPHYTIN A (three-letter code: BPH) (formula: $C_{55}H_{76}N_4O_6$).



Mol	Chain	Residues	Atoms				ZeroOcc	AltConf
5	L	1	Total	C	N	O	0	0
			65	55	4	6		
5	M	1	Total	C	N	O	0	0
			65	55	4	6		

- Molecule 6 is UBIQUINONE-10 (three-letter code: U10) (formula: $C_{59}H_{90}O_4$).

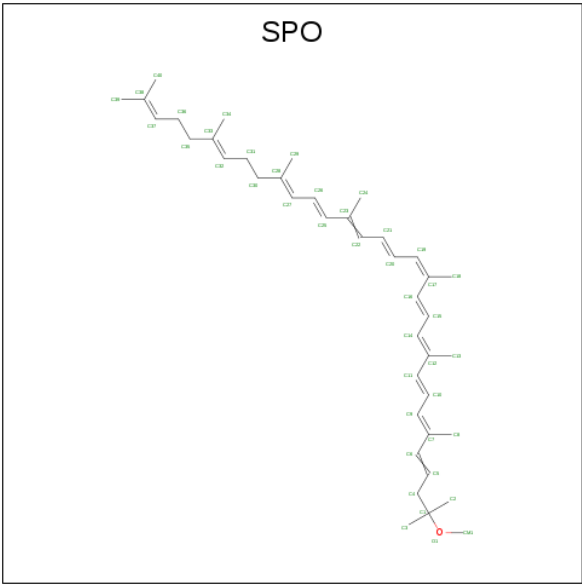


Mol	Chain	Residues	Atoms			ZeroOcc	AltConf
6	L	1	Total	C	O	0	0
			58	54	4		
6	M	1	Total	C	O	0	0
			58	54	4		

- Molecule 7 is MANGANESE (II) ION (three-letter code: MN) (formula: Mn).

Mol	Chain	Residues	Atoms		ZeroOcc	AltConf
7	M	1	Total	Mn	0	0
			1	1		

- Molecule 8 is SPHEROIDENE (three-letter code: SPO) (formula: C₄₁H₆₀O).



Mol	Chain	Residues	Atoms			ZeroOcc	AltConf
8	M	1	Total	C	O	0	0
			42	41	1		

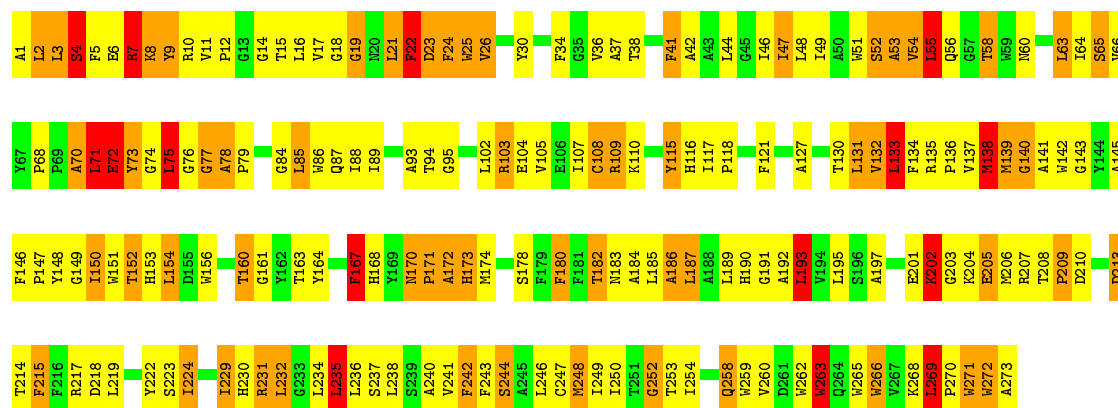
3 Residue-property plots

These plots are drawn for all protein, RNA and DNA chains in the entry. The first graphic for a chain summarises the proportions of the various outlier classes displayed in the second graphic. The second graphic shows the sequence view annotated by issues in geometry. Residues are color-coded according to the number of geometric quality criteria for which they contain at least one outlier: green = 0, yellow = 1, orange = 2 and red = 3 or more. Stretches of 2 or more consecutive residues without any outlier are shown as a green connector. Residues present in the sample, but not in the model, are shown in grey.

Note EDS was not executed.

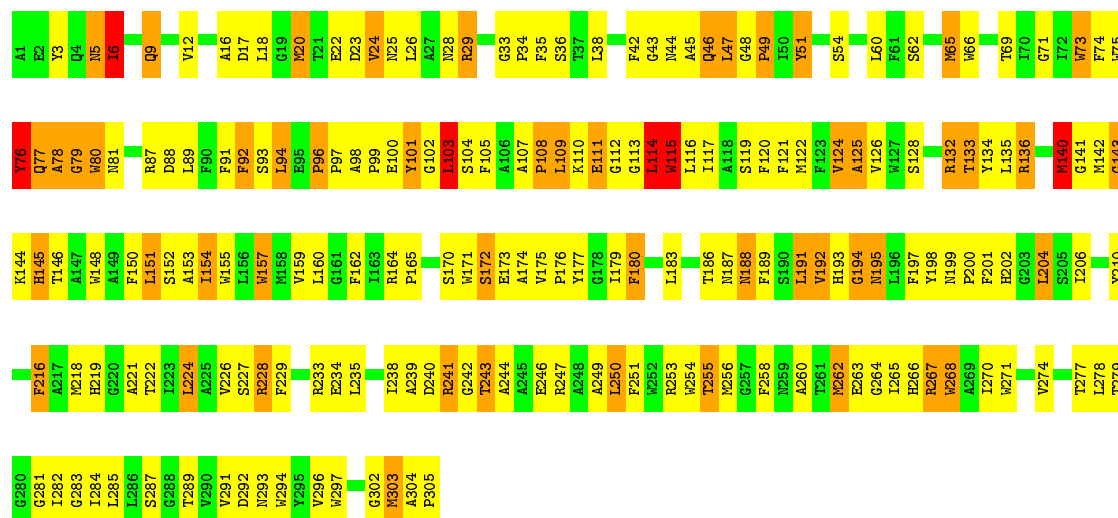
- Molecule 1: PHOTOSYNTHETIC REACTION CENTER (L SUBUNIT)

Chain L: 



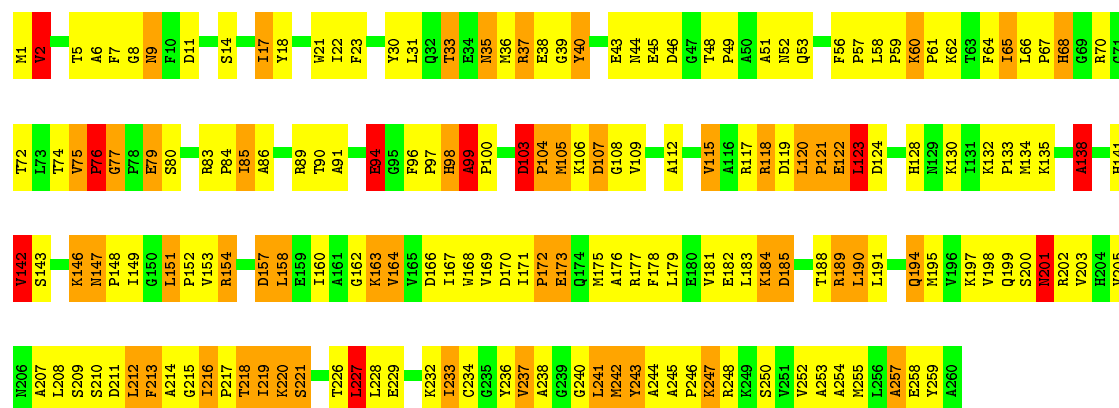
- Molecule 2: PHOTOSYNTHETIC REACTION CENTER (M SUBUNIT)

Chain M: 



- Molecule 3: PHOTOSYNTHETIC REACTION CENTER (H SUBUNIT)

Response	Percentage
Yes, a threat	31%
No, not a threat	46%
Don't know	20%
Refuse to answer	3%



4 Data and refinement statistics

Xtriage (Phenix) and EDS were not executed - this section is therefore incomplete.

Property	Value	Source
Space group	P 21 21 21	Depositor
Cell constants a, b, c, α , β , γ	143.70Å 139.80Å 78.65Å 90.00° 90.00° 90.00°	Depositor
Resolution (Å)	7.00 – 3.00	Depositor
% Data completeness (in resolution range)	(Not available) (7.00-3.00)	Depositor
R_{merge}	(Not available)	Depositor
R_{sym}	(Not available)	Depositor
Refinement program	X-PLOR	Depositor
R, R_{free}	0.234 , (Not available)	Depositor
Estimated twinning fraction	No twinning to report.	Xtriage
Total number of atoms	7136	wwPDB-VP
Average B, all atoms (Å ²)	39.0	wwPDB-VP

5 Model quality ⓘ

5.1 Standard geometry ⓘ

Bond lengths and bond angles in the following residue types are not validated in this section: BCL, BPH, MN, U10, SPO

The Z score for a bond length (or angle) is the number of standard deviations the observed value is removed from the expected value. A bond length (or angle) with $|Z| > 5$ is considered an outlier worth inspection. RMSZ is the root-mean-square of all Z scores of the bond lengths (or angles).

Mol	Chain	Bond lengths		Bond angles	
		RMSZ	$\# Z > 5$	RMSZ	$\# Z > 5$
1	L	0.87	1/2268 (0.0%)	1.04	11/3104 (0.4%)
2	M	0.85	4/2522 (0.2%)	1.41	10/3441 (0.3%)
3	H	0.92	2/2024 (0.1%)	1.16	8/2752 (0.3%)
All	All	0.87	7/6814 (0.1%)	1.22	29/9297 (0.3%)

Chiral center outliers are detected by calculating the chiral volume of a chiral center and verifying if the center is modelled as a planar moiety or with the opposite hand. A planarity outlier is detected by checking planarity of atoms in a peptide group, atoms in a mainchain group or atoms of a sidechain that are expected to be planar.

Mol	Chain	#Chirality outliers	#Planarity outliers
1	L	0	3
3	H	0	4
All	All	0	7

The worst 5 of 7 bond length outliers are listed below:

Mol	Chain	Res	Type	Atoms	Z	Observed(Å)	Ideal(Å)
3	H	76	PRO	C-N	18.97	1.67	1.33
1	L	252	GLY	C-N	-14.31	1.01	1.34
2	M	228	ARG	CD-NE	-11.97	1.26	1.46
2	M	228	ARG	NE-CZ	-9.37	1.20	1.33
3	H	99	ALA	C-N	6.71	1.47	1.34

The worst 5 of 29 bond angle outliers are listed below:

Mol	Chain	Res	Type	Atoms	Z	Observed(°)	Ideal(°)
2	M	228	ARG	NE-CZ-NH2	37.25	138.92	120.30
2	M	228	ARG	NE-CZ-NH1	-33.24	103.68	120.30
2	M	228	ARG	CD-NE-CZ	28.33	163.26	123.60

Continued on next page...

Continued from previous page...

Mol	Chain	Res	Type	Atoms	Z	Observed(°)	Ideal(°)
3	H	76	PRO	C-N-CA	9.99	143.28	122.30
1	L	133	LEU	CA-CB-CG	8.18	134.11	115.30

There are no chirality outliers.

5 of 7 planarity outliers are listed below:

Mol	Chain	Res	Type	Group
3	H	138	ALA	Mainchain
3	H	99	ALA	Mainchain
1	L	153	HIS	Mainchain
1	L	252	GLY	Mainchain
1	L	263	TRP	Mainchain

5.2 Too-close contacts [i](#)

In the following table, the Non-H and H(model) columns list the number of non-hydrogen atoms and hydrogen atoms in the chain respectively. The H(added) column lists the number of hydrogen atoms added and optimized by MolProbity. The Clashes column lists the number of clashes within the asymmetric unit, whereas Symm-Clashes lists symmetry related clashes.

Mol	Chain	Non-H	H(model)	H(added)	Clashes	Symm-Clashes
1	L	2181	0	2136	239	0
2	M	2429	0	2339	202	0
3	H	1973	0	1981	197	0
4	L	132	0	145	28	0
4	M	132	0	148	36	0
5	L	65	0	76	23	0
5	M	65	0	76	11	0
6	L	58	0	79	16	0
6	M	58	0	79	19	0
7	M	1	0	0	0	0
8	M	42	0	60	13	0
All	All	7136	0	7119	661	0

The all-atom clashscore is defined as the number of clashes found per 1000 atoms (including hydrogen atoms). The all-atom clashscore for this structure is 46.

The worst 5 of 661 close contacts within the same asymmetric unit are listed below, sorted by their clash magnitude.

Atom-1	Atom-2	Interatomic distance (Å)	Clash overlap (Å)
6:L:277:U10:C27	6:L:277:U10:C28	1.79	1.56
5:L:276:BPH:C2A	5:L:276:BPH:CAA	1.75	1.54
1:L:78:ALA:HB1	1:L:79:PRO:CD	1.69	1.21
1:L:78:ALA:CB	1:L:79:PRO:HD3	1.74	1.15
1:L:78:ALA:CB	1:L:79:PRO:CD	2.25	1.15

There are no symmetry-related clashes.

5.3 Torsion angles [i](#)

5.3.1 Protein backbone [i](#)

In the following table, the Percentiles column shows the percent Ramachandran outliers of the chain as a percentile score with respect to all X-ray entries followed by that with respect to entries of similar resolution.

The Analysed column shows the number of residues for which the backbone conformation was analysed, and the total number of residues.

Mol	Chain	Analysed	Favoured	Allowed	Outliers	Percentiles	
1	L	271/273 (99%)	166 (61%)	63 (23%)	42 (16%)	0	1
2	M	303/305 (99%)	201 (66%)	70 (23%)	32 (11%)	0	2
3	H	258/260 (99%)	151 (58%)	64 (25%)	43 (17%)	0	0
All	All	832/838 (99%)	518 (62%)	197 (24%)	117 (14%)	0	1

5 of 117 Ramachandran outliers are listed below:

Mol	Chain	Res	Type
1	L	3	LEU
1	L	4	SER
1	L	65	SER
1	L	70	ALA
1	L	71	LEU

5.3.2 Protein sidechains [i](#)

In the following table, the Percentiles column shows the percent sidechain outliers of the chain as a percentile score with respect to all X-ray entries followed by that with respect to entries of similar resolution.

The Analysed column shows the number of residues for which the sidechain conformation was

analysed, and the total number of residues.

Mol	Chain	Analysed	Rotameric	Outliers	Percentiles	
1	L	215/215 (100%)	156 (73%)	59 (27%)	0	2
2	M	238/238 (100%)	173 (73%)	65 (27%)	0	2
3	H	208/208 (100%)	145 (70%)	63 (30%)	0	1
All	All	661/661 (100%)	474 (72%)	187 (28%)	0	2

5 of 187 residues with a non-rotameric sidechain are listed below:

Mol	Chain	Res	Type
2	M	101	TYR
2	M	187	ASN
3	H	197	LYS
2	M	114	LEU
2	M	136	ARG

Some sidechains can be flipped to improve hydrogen bonding and reduce clashes. 5 of 24 such sidechains are listed below:

Mol	Chain	Res	Type
2	M	46	GLN
2	M	188	ASN
3	H	194	GLN
2	M	81	ASN
2	M	145	HIS

5.3.3 RNA ⓘ

There are no RNA molecules in this entry.

5.4 Non-standard residues in protein, DNA, RNA chains ⓘ

There are no non-standard protein/DNA/RNA residues in this entry.

5.5 Carbohydrates ⓘ

There are no carbohydrates in this entry.

5.6 Ligand geometry

Of 10 ligands modelled in this entry, 1 is monoatomic - leaving 9 for Mogul analysis.

In the following table, the Counts columns list the number of bonds (or angles) for which Mogul statistics could be retrieved, the number of bonds (or angles) that are observed in the model and the number of bonds (or angles) that are defined in the Chemical Component Dictionary. The Link column lists molecule types, if any, to which the group is linked. The Z score for a bond length (or angle) is the number of standard deviations the observed value is removed from the expected value. A bond length (or angle) with $|Z| > 2$ is considered an outlier worth inspection. RMSZ is the root-mean-square of all Z scores of the bond lengths (or angles).

Mol	Type	Chain	Res	Link	Bond lengths			Bond angles		
					Counts	RMSZ	# Z > 2	Counts	RMSZ	# Z > 2
4	BCL	M	307	2	58,74,74	2.53	18 (31%)	69,115,115	1.99	15 (21%)
5	BPH	L	276	-	64,70,70	2.32	16 (25%)	76,101,101	1.39	12 (15%)
4	BCL	L	274	1	58,74,74	4.19	24 (41%)	69,115,115	1.83	14 (20%)
4	BCL	M	308	2	58,74,74	3.58	23 (39%)	69,115,115	1.78	15 (21%)
6	U10	L	277	-	58,58,63	3.69	36 (62%)	70,73,79	1.80	14 (20%)
8	SPO	M	310	-	40,41,41	2.99	22 (55%)	47,50,50	1.93	12 (25%)
4	BCL	L	275	1	58,74,74	3.13	27 (46%)	69,115,115	1.70	15 (21%)
5	BPH	M	309	-	64,70,70	2.63	20 (31%)	76,101,101	1.40	12 (15%)
6	U10	M	311	-	58,58,63	3.02	31 (53%)	70,73,79	1.44	11 (15%)

In the following table, the Chirals column lists the number of chiral outliers, the number of chiral centers analysed, the number of these observed in the model and the number defined in the Chemical Component Dictionary. Similar counts are reported in the Torsion and Rings columns. '-' means no outliers of that kind were identified.

Mol	Type	Chain	Res	Link	Chirals	Torsions	Rings
4	BCL	M	307	2	2/2/21/25	10/37/137/137	-
5	BPH	L	276	-	1/1/18/22	17/54/105/105	0/5/6/6
4	BCL	L	274	1	1/1/21/25	9/37/137/137	-
4	BCL	M	308	2	-	12/37/137/137	-
6	U10	L	277	-	-	13/57/81/87	0/1/1/1
8	SPO	M	310	-	-	6/47/47/47	-
4	BCL	L	275	1	-	15/37/137/137	-
5	BPH	M	309	-	1/1/18/22	16/54/105/105	0/5/6/6
6	U10	M	311	-	-	20/57/81/87	0/1/1/1

The worst 5 of 217 bond length outliers are listed below:

Mol	Chain	Res	Type	Atoms	Z	Observed(Å)	Ideal(Å)
4	L	274	BCL	C3C-C4C	17.85	1.74	1.51
4	M	308	BCL	C4B-NB	15.87	1.49	1.35
5	L	276	BPH	CAA-C2A	11.61	1.75	1.54
4	L	274	BCL	CAA-C2A	10.51	1.73	1.54
4	L	274	BCL	OBB-CAB	10.16	1.54	1.22

The worst 5 of 120 bond angle outliers are listed below:

Mol	Chain	Res	Type	Atoms	Z	Observed(°)	Ideal(°)
4	M	307	BCL	CHD-C4C-NC	7.89	133.84	125.08
6	L	277	U10	C8-C7-C6	6.91	130.67	112.05
4	L	274	BCL	CHC-C1C-NC	-6.47	115.56	124.51
8	M	310	SPO	C3-C1-C4	-6.36	101.09	110.86
6	L	277	U10	C6-C1-C2	5.64	123.64	119.18

All (5) chirality outliers are listed below:

Mol	Chain	Res	Type	Atom
4	M	307	BCL	C8
4	M	307	BCL	C13
5	L	276	BPH	C8
4	L	274	BCL	C2C
5	M	309	BPH	C3C

5 of 118 torsion outliers are listed below:

Mol	Chain	Res	Type	Atoms
5	L	276	BPH	CBD-CGD-O2D-CED
5	L	276	BPH	C4C-C3C-CAC-CBC
5	L	276	BPH	C2C-C3C-CAC-CBC
5	L	276	BPH	C4B-C3B-CAB-CBB
4	L	274	BCL	CBD-CGD-O2D-CED

There are no ring outliers.

9 monomers are involved in 136 short contacts:

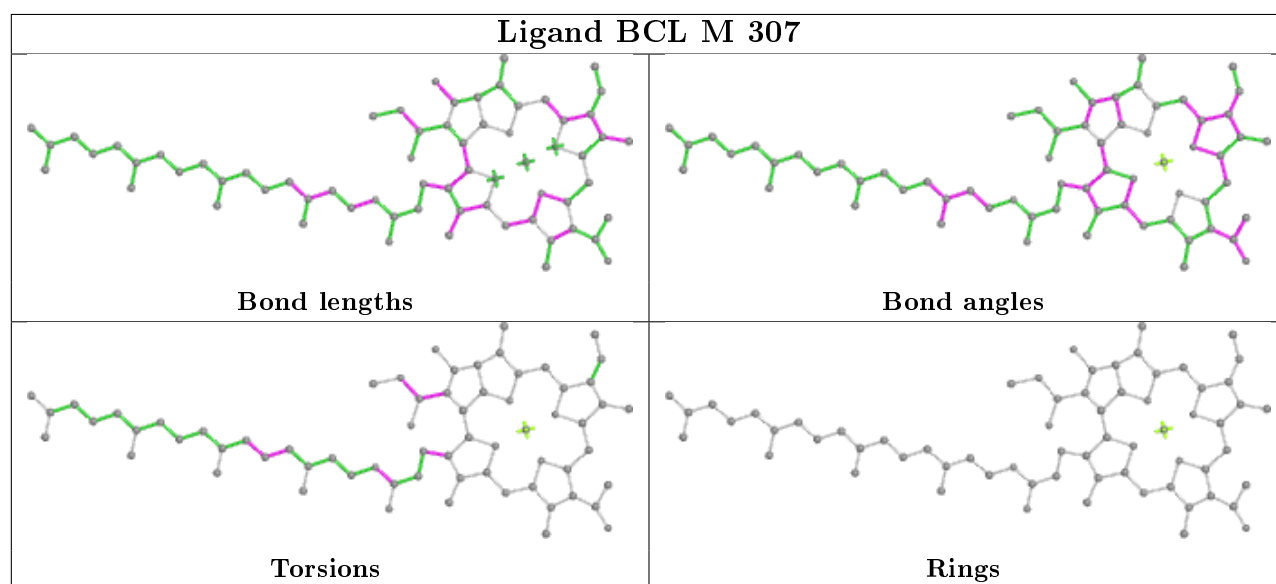
Mol	Chain	Res	Type	Clashes	Symm-Clashes
4	M	307	BCL	23	0
5	L	276	BPH	23	0
4	L	274	BCL	22	0
4	M	308	BCL	17	0
6	L	277	U10	16	0

Continued on next page...

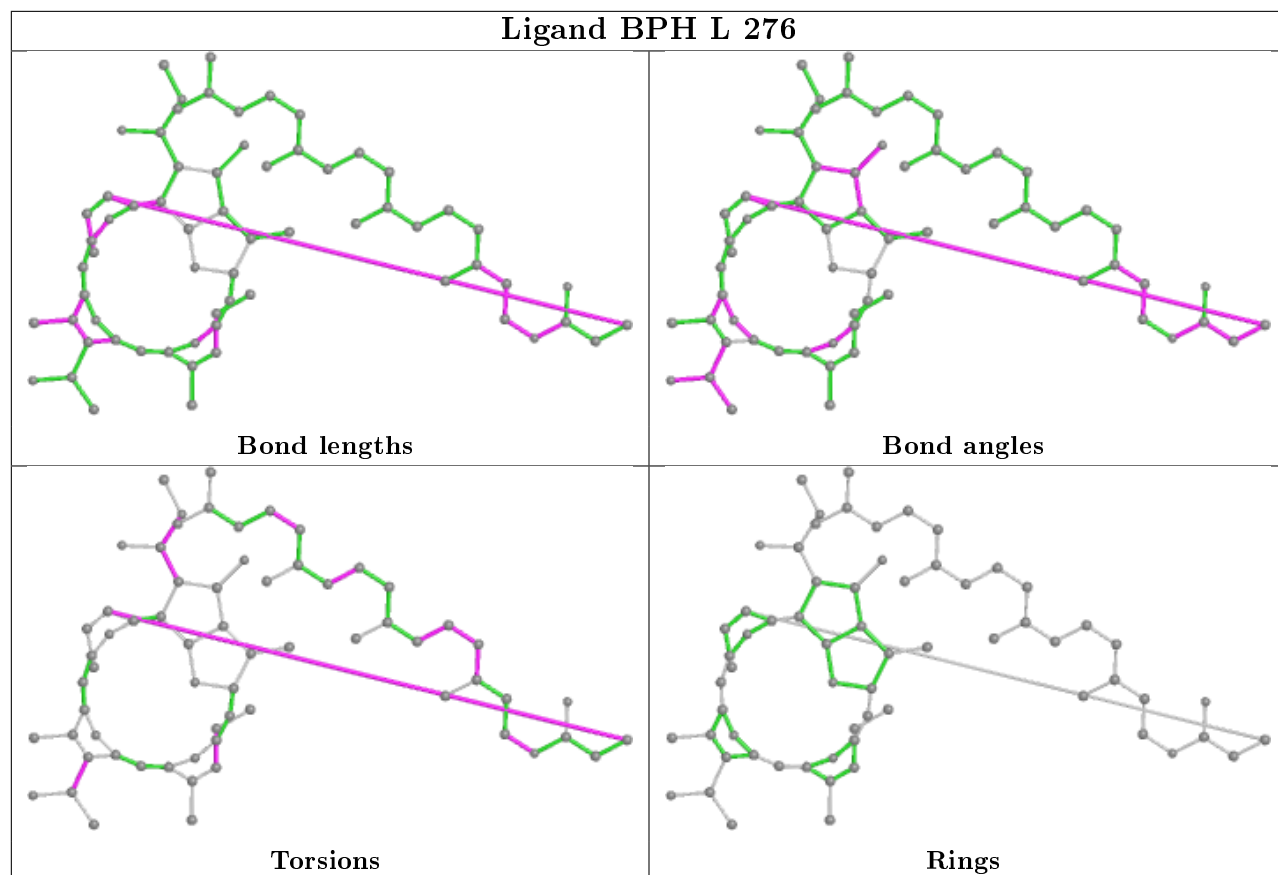
Continued from previous page...

Mol	Chain	Res	Type	Clashes	Symm-Clashes
8	M	310	SPO	13	0
4	L	275	BCL	9	0
5	M	309	BPH	11	0
6	M	311	U10	19	0

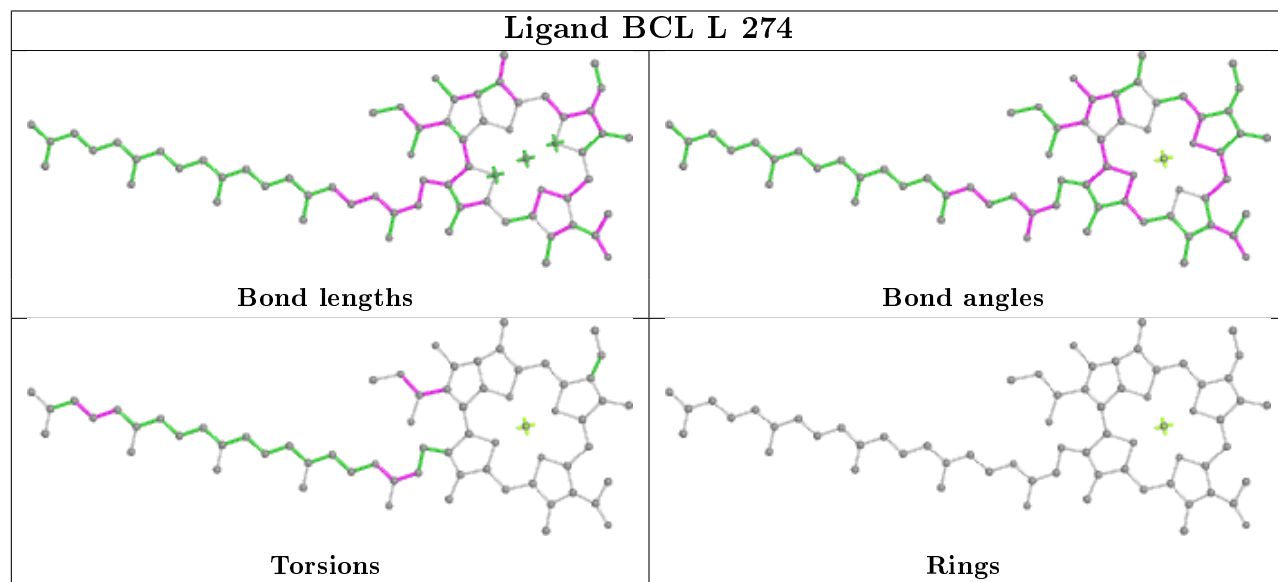
The following is a two-dimensional graphical depiction of Mogul quality analysis of bond lengths, bond angles, torsion angles, and ring geometry for all instances of the Ligand of Interest. In addition, ligands with molecular weight > 250 and outliers as shown on the validation Tables will also be included. For torsion angles, if less than 5% of the Mogul distribution of torsion angles is within 10 degrees of the torsion angle in question, then that torsion angle is considered an outlier. Any bond that is central to one or more torsion angles identified as an outlier by Mogul will be highlighted in the graph. For rings, the root-mean-square deviation (RMSD) between the ring in question and similar rings identified by Mogul is calculated over all ring torsion angles. If the average RMSD is greater than 60 degrees and the minimal RMSD between the ring in question and any Mogul-identified rings is also greater than 60 degrees, then that ring is considered an outlier. The outliers are highlighted in purple. The color gray indicates Mogul did not find sufficient equivalents in the CSD to analyse the geometry.

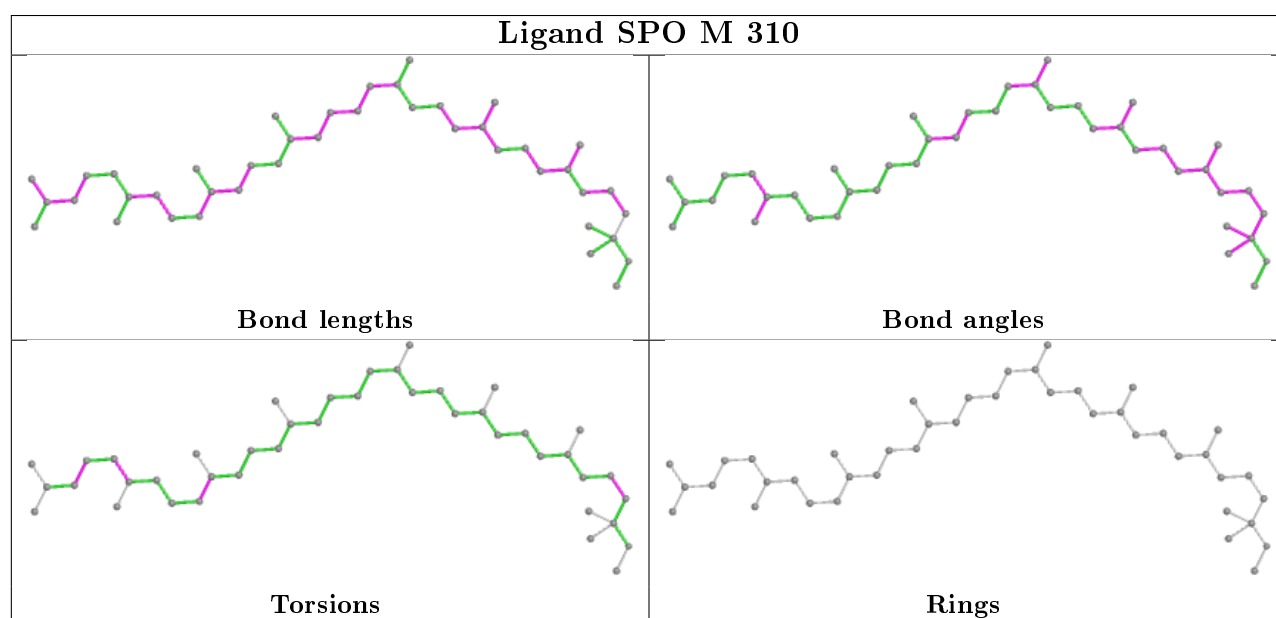
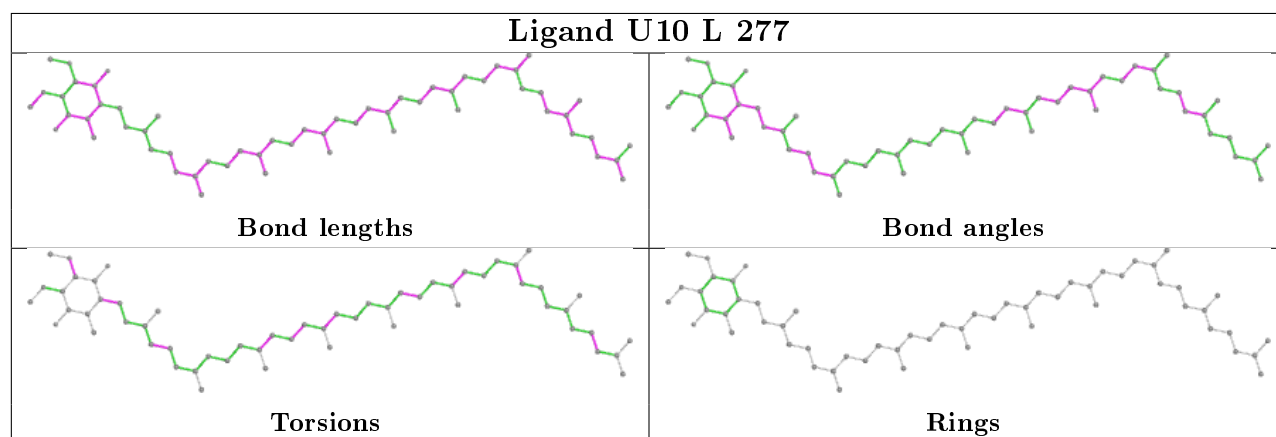
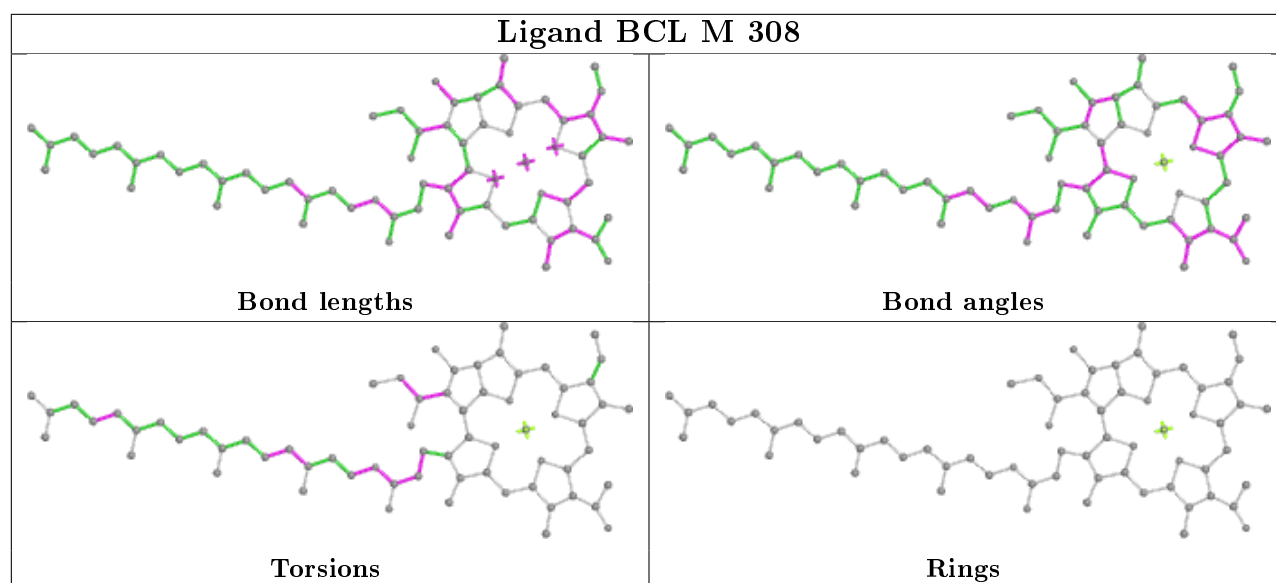


Ligand BPH L 276

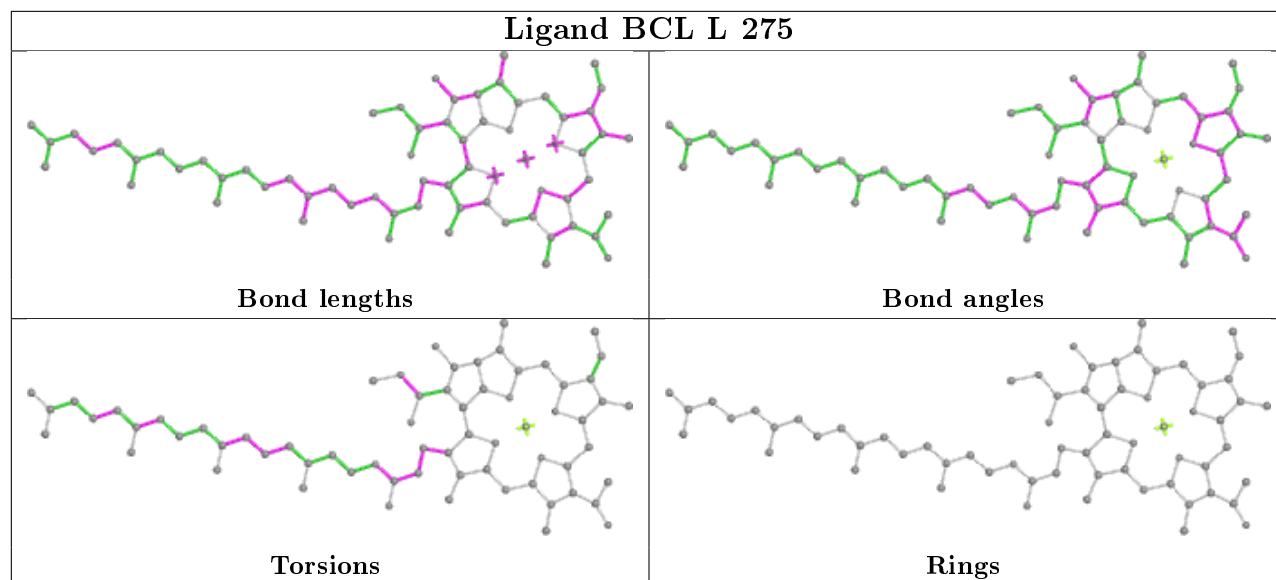


Ligand BCL L 274

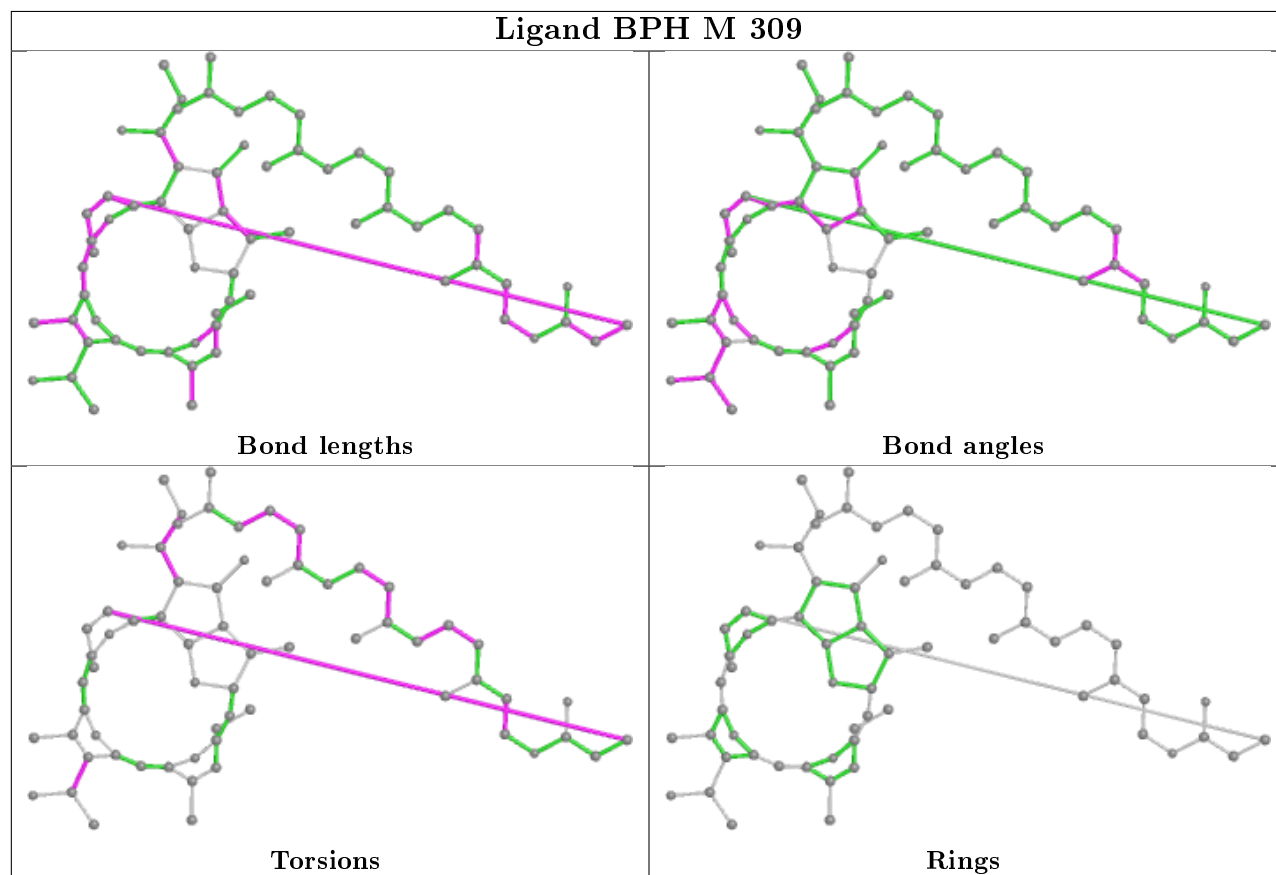


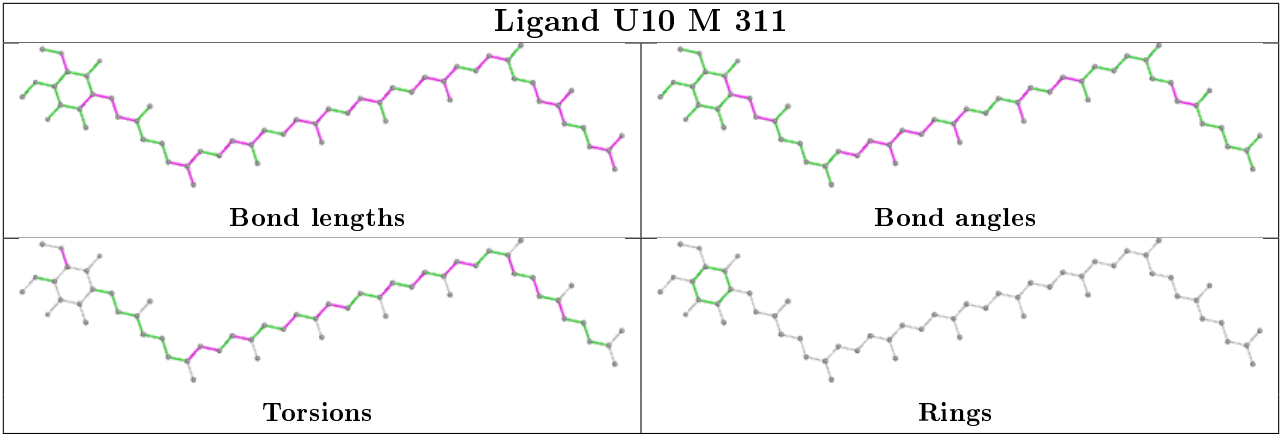


Ligand BCL L 275



Ligand BPH M 309





5.7 Other polymers ⓘ

There are no such residues in this entry.

5.8 Polymer linkage issues ⓘ

The following chains have linkage breaks:

Mol	Chain	Number of breaks
3	H	1
1	L	1

All chain breaks are listed below:

Model	Chain	Residue-1	Atom-1	Residue-2	Atom-2	Distance (Å)
1	H	76:PRO	C	77:GLY	N	1.67
1	L	252:GLY	C	253:THR	N	1.01

6 Fit of model and data ⓘ

6.1 Protein, DNA and RNA chains ⓘ

EDS was not executed - this section is therefore empty.

6.2 Non-standard residues in protein, DNA, RNA chains ⓘ

EDS was not executed - this section is therefore empty.

6.3 Carbohydrates ⓘ

EDS was not executed - this section is therefore empty.

6.4 Ligands ⓘ

EDS was not executed - this section is therefore empty.

6.5 Other polymers ⓘ

EDS was not executed - this section is therefore empty.