



Full wwPDB X-ray Structure Validation Report ⓘ

May 25, 2020 – 06:00 pm BST

PDB ID : 4YWA
Title : Structural Insight into Divalent Galactoside Binding to Pseudomonas aeruginosa lectin LecA
Authors : Visini, R.; Jin, X.; Michaud, G.; Bergmann, M.; Gillon, E.; Imberty, A.; Stocker, A.; Darbre, T.; Pieters, R.; Reymond, J.-L.
Deposited on : 2015-03-20
Resolution : 1.19 Å(reported)

This is a Full wwPDB X-ray Structure Validation Report for a publicly released PDB entry.

We welcome your comments at validation@mail.wwpdb.org

A user guide is available at

<https://www.wwpdb.org/validation/2017/XrayValidationReportHelp>

with specific help available everywhere you see the ⓘ symbol.

The following versions of software and data (see [references ⓘ](#)) were used in the production of this report:

MolProbity : 4.02b-467
Mogul : 1.8.5 (274361), CSD as541be (2020)
Xtriage (Phenix) : 1.13
EDS : 2.11
buster-report : 1.1.7 (2018)
Percentile statistics : 20191225.v01 (using entries in the PDB archive December 25th 2019)
Refmac : 5.8.0158
CCP4 : 7.0.044 (Gargrove)
Ideal geometry (proteins) : Engh & Huber (2001)
Ideal geometry (DNA, RNA) : Parkinson et al. (1996)
Validation Pipeline (wwPDB-VP) : 2.11

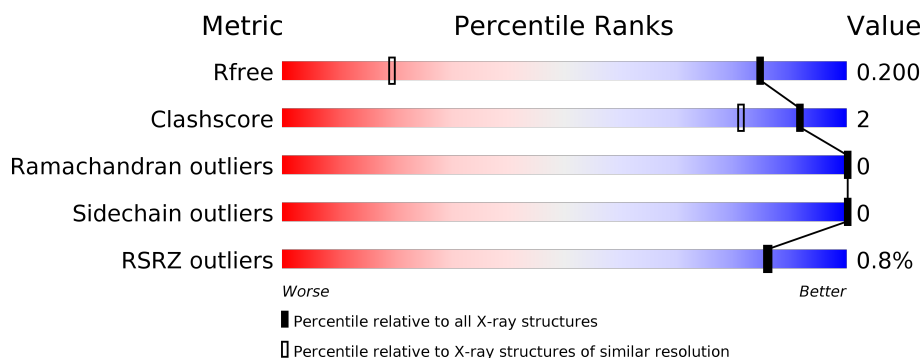
1 Overall quality at a glance

The following experimental techniques were used to determine the structure:

X-RAY DIFFRACTION

The reported resolution of this entry is 1.19 Å.

Percentile scores (ranging between 0-100) for global validation metrics of the entry are shown in the following graphic. The table shows the number of entries on which the scores are based.



Metric	Whole archive (#Entries)	Similar resolution (#Entries, resolution range(Å))
R_{free}	130704	1223 (1.22-1.18)
Clashscore	141614	1286 (1.22-1.18)
Ramachandran outliers	138981	1240 (1.22-1.18)
Sidechain outliers	138945	1239 (1.22-1.18)
RSRZ outliers	127900	1200 (1.22-1.18)

The table below summarises the geometric issues observed across the polymeric chains and their fit to the electron density. The red, orange, yellow and green segments on the lower bar indicate the fraction of residues that contain outliers for ≥ 3 , 2, 1 and 0 types of geometric quality criteria respectively. A grey segment represents the fraction of residues that are not modelled. The numeric value for each fraction is indicated below the corresponding segment, with a dot representing fractions $\leq 5\%$. The upper red bar (where present) indicates the fraction of residues that have poor fit to the electron density. The numeric value is given above the bar.

Mol	Chain	Length	Quality of chain
1	A	121	<div> <div>%</div> <div> <div></div> <div>96%</div> <div>.</div> </div> </div>
1	B	121	<div> <div>%</div> <div> <div></div> <div>96%</div> <div>.</div> </div> </div>
1	C	121	<div> <div>%</div> <div> <div></div> <div>97%</div> <div>.</div> </div> </div>
1	D	121	<div> <div>%</div> <div> <div></div> <div>97%</div> <div>.</div> </div> </div>

2 Entry composition [i](#)

There are 4 unique types of molecules in this entry. The entry contains 4620 atoms, of which 120 are hydrogens and 0 are deuteriums.

In the tables below, the ZeroOcc column contains the number of atoms modelled with zero occupancy, the AltConf column contains the number of residues with at least one atom in alternate conformation and the Trace column contains the number of residues modelled with at most 2 atoms.

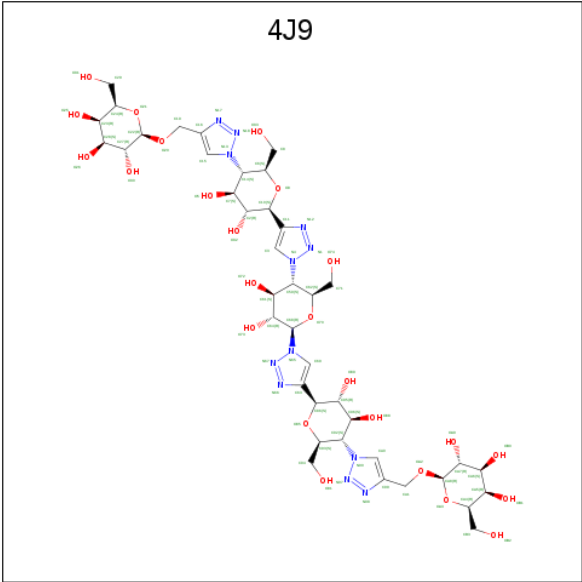
- Molecule 1 is a protein called PA-I galactophilic lectin.

Mol	Chain	Residues	Atoms					ZeroOcc	AltConf	Trace
1	A	121	Total	C	N	O	S	0	0	0
			900	567	156	174	3			
1	B	121	Total	C	N	O	S	0	0	0
			900	567	156	174	3			
1	C	121	Total	C	N	O	S	0	0	0
			900	567	156	174	3			
1	D	121	Total	C	N	O	S	0	0	0
			900	567	156	174	3			

- Molecule 2 is CALCIUM ION (three-letter code: CA) (formula: Ca).

Mol	Chain	Residues	Atoms		ZeroOcc	AltConf
2	B	1	Total	Ca	0	0
			1	1		
2	A	1	Total	Ca	0	0
			1	1		
2	D	1	Total	Ca	0	0
			1	1		
2	C	1	Total	Ca	0	0
			1	1		

- Molecule 3 is (2R,3R,4S,5R,6R,2'R,3'R,4'S,5'R,6'R)-2,2'-([(2R,3R,4S,5S,6S)-3,4-dihydroxy-6-(hydroxymethyl)tetrahydro-2H-pyran-2,5-diyl]bis{1H-1,2,3-triazole-1,4-diyl}[(2S,3R,4S,5S,6S)-3,4-dihydroxy-6-(hydroxymethyl)tetrahydro-2H-pyran-2,5-diyl]-1H-1,2,3-triazole-1,4-diylmethanediyl)bis[6-(hydroxymethyl)tetrahydro-2H-pyran-3,4,5-triol] (three-letter code: 4J9) (formula: C₄₀H₆₀N₁₂O₂₄).



Mol	Chain	Residues	Atoms					ZeroOcc	AltConf
3	A	1	Total	C	H	N	O	0	0
			136	40	60	12	24		
3	C	1	Total	C	H	N	O	0	0
			136	40	60	12	24		

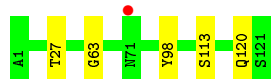
- Molecule 4 is water.

Mol	Chain	Residues	Atoms		ZeroOcc	AltConf
4	A	196	Total	O	0	0
			196	196		
4	B	180	Total	O	0	0
			180	180		
4	C	193	Total	O	0	0
			193	193		
4	D	175	Total	O	0	0
			175	175		

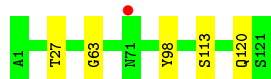
3 Residue-property plots [i](#)

These plots are drawn for all protein, RNA and DNA chains in the entry. The first graphic for a chain summarises the proportions of the various outlier classes displayed in the second graphic. The second graphic shows the sequence view annotated by issues in geometry and electron density. Residues are color-coded according to the number of geometric quality criteria for which they contain at least one outlier: green = 0, yellow = 1, orange = 2 and red = 3 or more. A red dot above a residue indicates a poor fit to the electron density ($RSRZ > 2$). Stretches of 2 or more consecutive residues without any outlier are shown as a green connector. Residues present in the sample, but not in the model, are shown in grey.

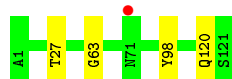
- Molecule 1: PA-I galactophilic lectin



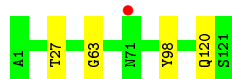
- Molecule 1: PA-I galactophilic lectin



- Molecule 1: PA-I galactophilic lectin



- Molecule 1: PA-I galactophilic lectin



4 Data and refinement statistics

Property	Value	Source
Space group	P 1	Depositor
Cell constants a, b, c, α , β , γ	40.77Å 72.32Å 78.71Å 117.23° 105.00° 89.94°	Depositor
Resolution (Å)	23.74 – 1.19 23.74 – 1.19	Depositor EDS
% Data completeness (in resolution range)	93.8 (23.74-1.19) 91.8 (23.74-1.19)	Depositor EDS
R_{merge}	(Not available)	Depositor
R_{sym}	0.06	Depositor
$\langle I/\sigma(I) \rangle$ ¹	1.48 (at 1.19Å)	Xtriage
Refinement program	PHENIX	Depositor
R, R_{free}	0.186 , 0.203 0.183 , 0.200	Depositor DCC
R_{free} test set	11334 reflections (5.02%)	wwPDB-VP
Wilson B-factor (Å ²)	12.8	Xtriage
Anisotropy	0.713	Xtriage
Bulk solvent k_{sol} (e/Å ³), B_{sol} (Å ²)	0.40 , 49.4	EDS
L-test for twinning ²	$\langle L \rangle = 0.50$, $\langle L^2 \rangle = 0.33$	Xtriage
Estimated twinning fraction	0.477 for h,-k,-h-l 0.477 for -h,k,-k-l 0.477 for -h,-k,h+k+l	Xtriage
F_o, F_c correlation	0.97	EDS
Total number of atoms	4620	wwPDB-VP
Average B, all atoms (Å ²)	20.0	wwPDB-VP

Xtriage's analysis on translational NCS is as follows: *The largest off-origin peak in the Patterson function is 9.04% of the height of the origin peak. No significant pseudotranslation is detected.*

¹Intensities estimated from amplitudes.

²Theoretical values of $\langle |L| \rangle$, $\langle L^2 \rangle$ for acentric reflections are 0.5, 0.333 respectively for untwinned datasets, and 0.375, 0.2 for perfectly twinned datasets.

5 Model quality [i](#)

5.1 Standard geometry [i](#)

Bond lengths and bond angles in the following residue types are not validated in this section: 4J9, CA

The Z score for a bond length (or angle) is the number of standard deviations the observed value is removed from the expected value. A bond length (or angle) with $|Z| > 5$ is considered an outlier worth inspection. RMSZ is the root-mean-square of all Z scores of the bond lengths (or angles).

Mol	Chain	Bond lengths		Bond angles	
		RMSZ	$\# Z > 5$	RMSZ	$\# Z > 5$
1	A	0.52	0/923	0.67	0/1262
1	B	0.52	0/923	0.66	0/1262
1	C	0.52	0/923	0.66	0/1262
1	D	0.54	0/923	0.67	0/1262
All	All	0.52	0/3692	0.66	0/5048

There are no bond length outliers.

There are no bond angle outliers.

There are no chirality outliers.

There are no planarity outliers.

5.2 Too-close contacts [i](#)

In the following table, the Non-H and H(model) columns list the number of non-hydrogen atoms and hydrogen atoms in the chain respectively. The H(added) column lists the number of hydrogen atoms added and optimized by MolProbity. The Clashes column lists the number of clashes within the asymmetric unit, whereas Symm-Clashes lists symmetry related clashes.

Mol	Chain	Non-H	H(model)	H(added)	Clashes	Symm-Clashes
1	A	900	0	861	4	0
1	B	900	0	861	4	0
1	C	900	0	861	3	0
1	D	900	0	861	3	0
2	A	1	0	0	0	0
2	B	1	0	0	0	0
2	C	1	0	0	0	0
2	D	1	0	0	0	0
3	A	76	60	56	0	0

Continued on next page...

Continued from previous page...

Mol	Chain	Non-H	H(model)	H(added)	Clashes	Symm-Clashes
3	C	76	60	56	0	0
4	A	196	0	0	2	4
4	B	180	0	0	2	2
4	C	193	0	0	1	3
4	D	175	0	0	1	3
All	All	4500	120	3556	12	6

The all-atom clashscore is defined as the number of clashes found per 1000 atoms (including hydrogen atoms). The all-atom clashscore for this structure is 2.

All (12) close contacts within the same asymmetric unit are listed below, sorted by their clash magnitude.

Atom-1	Atom-2	Interatomic distance (Å)	Clash overlap (Å)
1:B:120:GLN:NE2	4:B:1002:HOH:O	2.28	0.57
1:C:120:GLN:NE2	4:C:301:HOH:O	2.27	0.56
1:A:27:THR:HG21	1:B:27:THR:HG21	1.87	0.56
1:C:27:THR:HG21	1:D:27:THR:HG21	1.88	0.55
1:D:120:GLN:NE2	4:D:1001:HOH:O	2.34	0.55
1:B:113:SER:OG	4:B:1001:HOH:O	2.07	0.54
1:A:120:GLN:NE2	4:A:303:HOH:O	2.39	0.53
1:A:63:GLY:HA2	1:A:98:TYR:CZ	2.49	0.47
1:C:63:GLY:HA2	1:C:98:TYR:CZ	2.50	0.47
1:D:63:GLY:HA2	1:D:98:TYR:CZ	2.51	0.46
1:B:63:GLY:HA2	1:B:98:TYR:CZ	2.51	0.45
1:A:113:SER:OG	4:A:301:HOH:O	2.12	0.43

All (6) symmetry-related close contacts are listed below. The label for Atom-2 includes the symmetry operator and encoded unit-cell translations to be applied.

Atom-1	Atom-2	Interatomic distance (Å)	Clash overlap (Å)
4:B:1130:HOH:O	4:C:423:HOH:O[1_645]	2.08	0.12
4:A:423:HOH:O	4:D:1133:HOH:O[1_655]	2.13	0.07
4:B:1128:HOH:O	4:C:434:HOH:O[1_645]	2.13	0.07
4:A:432:HOH:O	4:D:1124:HOH:O[1_655]	2.13	0.07
4:A:425:HOH:O	4:D:1116:HOH:O[1_655]	2.15	0.05
4:A:457:HOH:O	4:C:381:HOH:O[1_656]	2.18	0.02

5.3 Torsion angles [i](#)

5.3.1 Protein backbone [i](#)

In the following table, the Percentiles column shows the percent Ramachandran outliers of the chain as a percentile score with respect to all X-ray entries followed by that with respect to entries of similar resolution.

The Analysed column shows the number of residues for which the backbone conformation was analysed, and the total number of residues.

Mol	Chain	Analysed	Favoured	Allowed	Outliers	Percentiles	
1	A	119/121 (98%)	116 (98%)	3 (2%)	0	100	100
1	B	119/121 (98%)	116 (98%)	3 (2%)	0	100	100
1	C	119/121 (98%)	116 (98%)	3 (2%)	0	100	100
1	D	119/121 (98%)	116 (98%)	3 (2%)	0	100	100
All	All	476/484 (98%)	464 (98%)	12 (2%)	0	100	100

There are no Ramachandran outliers to report.

5.3.2 Protein sidechains [i](#)

In the following table, the Percentiles column shows the percent sidechain outliers of the chain as a percentile score with respect to all X-ray entries followed by that with respect to entries of similar resolution.

The Analysed column shows the number of residues for which the sidechain conformation was analysed, and the total number of residues.

Mol	Chain	Analysed	Rotameric	Outliers	Percentiles	
1	A	94/94 (100%)	94 (100%)	0	100	100
1	B	94/94 (100%)	94 (100%)	0	100	100
1	C	94/94 (100%)	94 (100%)	0	100	100
1	D	94/94 (100%)	94 (100%)	0	100	100
All	All	376/376 (100%)	376 (100%)	0	100	100

There are no protein residues with a non-rotameric sidechain to report.

Some sidechains can be flipped to improve hydrogen bonding and reduce clashes. All (4) such sidechains are listed below:

Mol	Chain	Res	Type
1	A	53	GLN
1	B	53	GLN
1	C	53	GLN
1	D	53	GLN

5.3.3 RNA ⓘ

There are no RNA molecules in this entry.

5.4 Non-standard residues in protein, DNA, RNA chains ⓘ

There are no non-standard protein/DNA/RNA residues in this entry.

5.5 Carbohydrates ⓘ

There are no carbohydrates in this entry.

5.6 Ligand geometry ⓘ

Of 6 ligands modelled in this entry, 4 are monoatomic - leaving 2 for Mogul analysis.

In the following table, the Counts columns list the number of bonds (or angles) for which Mogul statistics could be retrieved, the number of bonds (or angles) that are observed in the model and the number of bonds (or angles) that are defined in the Chemical Component Dictionary. The Link column lists molecule types, if any, to which the group is linked. The Z score for a bond length (or angle) is the number of standard deviations the observed value is removed from the expected value. A bond length (or angle) with $|Z| > 2$ is considered an outlier worth inspection. RMSZ is the root-mean-square of all Z scores of the bond lengths (or angles).

Mol	Type	Chain	Res	Link	Bond lengths			Bond angles		
					Counts	RMSZ	$\# Z > 2$	Counts	RMSZ	$\# Z > 2$
3	4J9	C	201	2	82,84,84	2.08	20 (24%)	80,125,125	1.48	11 (13%)
3	4J9	A	202	2	82,84,84	2.08	20 (24%)	80,125,125	1.51	11 (13%)

In the following table, the Chirals column lists the number of chiral outliers, the number of chiral centers analysed, the number of these observed in the model and the number defined in the Chemical Component Dictionary. Similar counts are reported in the Torsion and Rings columns. '-' means no outliers of that kind were identified.

Mol	Type	Chain	Res	Link	Chirals	Torsions	Rings
3	4J9	C	201	2	-	7/16/144/144	0/9/9/9

Continued on next page...

Continued from previous page...

Mol	Type	Chain	Res	Link	Chirals	Torsions	Rings
3	4J9	A	202	2	-	7/16/144/144	0/9/9/9

All (40) bond length outliers are listed below:

Mol	Chain	Res	Type	Atoms	Z	Observed(Å)	Ideal(Å)
3	C	201	4J9	C11-N12	6.89	1.43	1.34
3	A	202	4J9	C11-N12	6.86	1.43	1.34
3	A	202	4J9	CA0-N90	5.52	1.41	1.35
3	A	202	4J9	C14-N13	-5.48	1.41	1.49
3	C	201	4J9	CA0-N90	5.22	1.41	1.35
3	C	201	4J9	C14-N13	-5.21	1.41	1.49
3	C	201	4J9	C69-N65	5.16	1.41	1.35
3	C	201	4J9	N12-N1	5.05	1.43	1.34
3	A	202	4J9	C69-N65	5.05	1.41	1.35
3	C	201	4J9	C92-N90	-5.00	1.41	1.49
3	A	202	4J9	N12-N1	5.00	1.43	1.34
3	A	202	4J9	C92-N90	-4.91	1.42	1.49
3	C	201	4J9	O9-C10	-4.41	1.38	1.44
3	A	202	4J9	O9-C10	-4.34	1.38	1.44
3	A	202	4J9	C99-N98	3.95	1.39	1.34
3	C	201	4J9	C99-N98	3.89	1.39	1.34
3	A	202	4J9	N98-N97	3.87	1.41	1.34
3	C	201	4J9	N98-N97	3.81	1.41	1.34
3	C	201	4J9	C16-N17	3.49	1.38	1.34
3	A	202	4J9	C16-N17	3.43	1.38	1.34
3	C	201	4J9	C11-C10	3.04	1.54	1.51
3	A	202	4J9	C69-C63	2.98	1.40	1.36
3	C	201	4J9	C69-C63	2.95	1.40	1.36
3	A	202	4J9	C11-C10	2.86	1.53	1.51
3	C	201	4J9	OA3-CA4	-2.63	1.38	1.44
3	C	201	4J9	C63-N66	2.59	1.37	1.34
3	C	201	4J9	C15-N13	2.57	1.38	1.35
3	A	202	4J9	C63-N66	2.57	1.37	1.34
3	A	202	4J9	OA3-CA4	-2.51	1.38	1.44
3	C	201	4J9	N66-N67	2.36	1.38	1.34
3	A	202	4J9	N66-N67	2.33	1.38	1.34
3	C	201	4J9	O21-C24	-2.33	1.38	1.44
3	A	202	4J9	C15-N13	2.30	1.38	1.35
3	C	201	4J9	N18-N13	2.28	1.39	1.34
3	A	202	4J9	N18-N13	2.27	1.39	1.34
3	A	202	4J9	O9-C6	-2.24	1.38	1.44
3	C	201	4J9	N17-N18	2.21	1.38	1.34

Continued on next page...

Continued from previous page...

Mol	Chain	Res	Type	Atoms	Z	Observed(Å)	Ideal(Å)
3	C	201	4J9	O9-C6	-2.19	1.39	1.44
3	A	202	4J9	O21-C24	-2.10	1.39	1.44
3	A	202	4J9	N17-N18	2.07	1.38	1.34

All (22) bond angle outliers are listed below:

Mol	Chain	Res	Type	Atoms	Z	Observed(°)	Ideal(°)
3	A	202	4J9	C10-C11-N12	5.26	128.86	120.30
3	C	201	4J9	C10-C11-N12	5.24	128.83	120.30
3	A	202	4J9	C3-N4-C59	-5.11	120.96	125.48
3	C	201	4J9	C3-N4-C59	-4.85	121.19	125.48
3	C	201	4J9	C86-C63-N66	4.66	127.88	120.30
3	A	202	4J9	C86-C63-N66	4.53	127.67	120.30
3	A	202	4J9	C6-O9-C10	3.19	117.94	112.14
3	C	201	4J9	C6-O9-C10	3.17	117.90	112.14
3	A	202	4J9	O9-C10-C2	2.91	113.71	108.91
3	C	201	4J9	O9-C10-C2	2.60	113.19	108.91
3	C	201	4J9	CA1-OA2-CA8	-2.58	108.72	113.31
3	A	202	4J9	C19-O20-C22	-2.54	108.79	113.31
3	C	201	4J9	O85-C86-C95	2.49	113.00	108.91
3	A	202	4J9	O85-C86-C95	2.38	112.83	108.91
3	C	201	4J9	C93-O85-C86	-2.34	107.88	112.14
3	A	202	4J9	C93-O85-C86	-2.28	108.00	112.14
3	C	201	4J9	C19-O20-C22	-2.27	109.28	113.31
3	C	201	4J9	C11-C10-C2	-2.25	107.23	112.67
3	A	202	4J9	CA8-OA3-CA4	-2.17	109.42	113.69
3	A	202	4J9	C11-C10-C2	-2.16	107.47	112.67
3	C	201	4J9	O25-C23-C28	-2.13	105.42	110.35
3	A	202	4J9	OA3-CA4-CA5	2.10	113.50	109.69

There are no chirality outliers.

All (14) torsion outliers are listed below:

Mol	Chain	Res	Type	Atoms
3	C	201	4J9	C92-C93-C94-O91
3	A	202	4J9	C92-C93-C94-O91
3	C	201	4J9	CA7-CA8-OA2-CA1
3	C	201	4J9	OA3-CA8-OA2-CA1
3	C	201	4J9	O85-C93-C94-O91
3	A	202	4J9	OA3-CA8-OA2-CA1
3	A	202	4J9	CA7-CA8-OA2-CA1
3	C	201	4J9	O21-C22-O20-C19

Continued on next page...

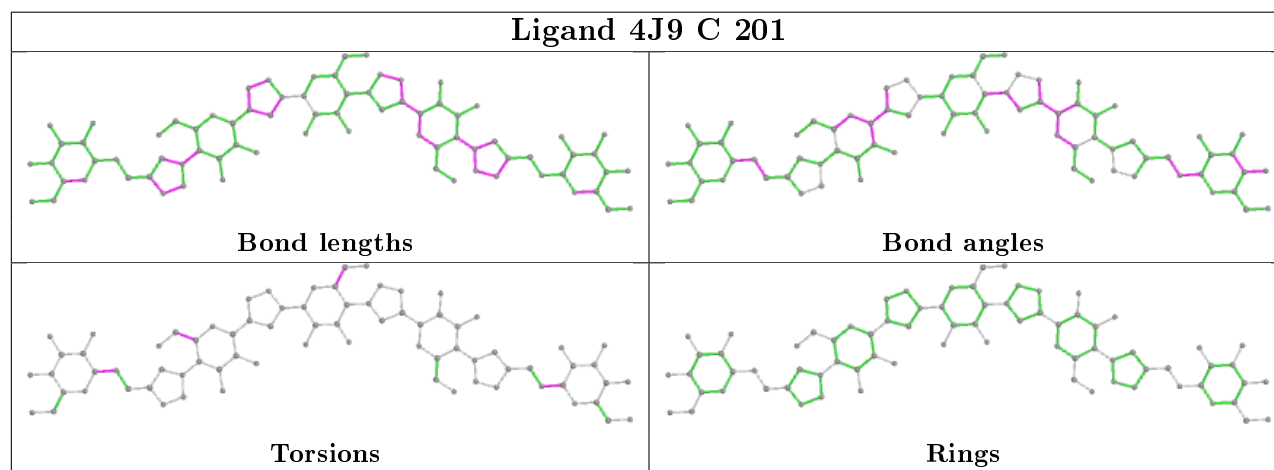
Continued from previous page...

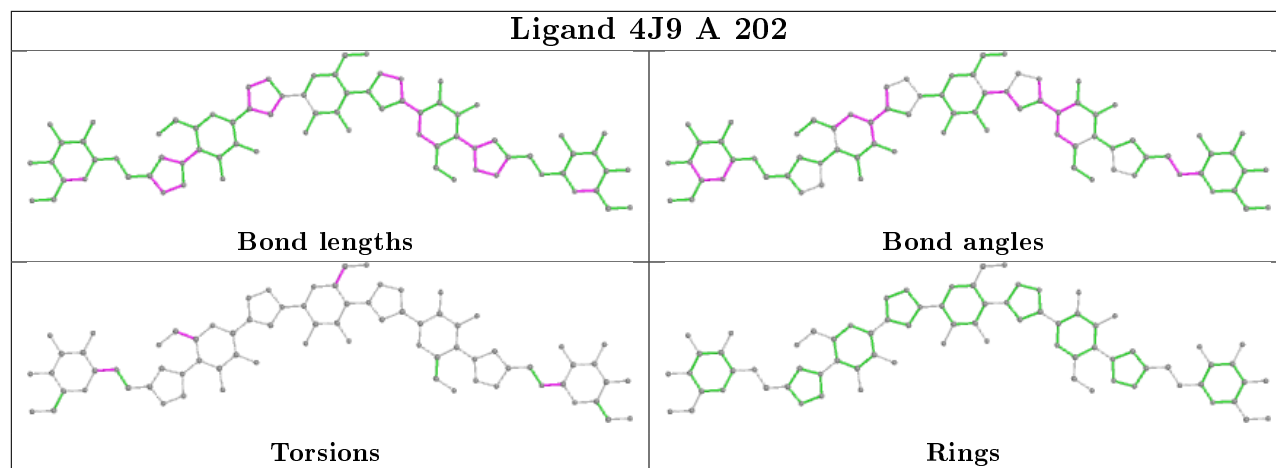
Mol	Chain	Res	Type	Atoms
3	A	202	4J9	C59-C62-C71-O74
3	A	202	4J9	O21-C22-O20-C19
3	C	201	4J9	C27-C22-O20-C19
3	A	202	4J9	C27-C22-O20-C19
3	C	201	4J9	C59-C62-C71-O74
3	A	202	4J9	O85-C93-C94-O91

There are no ring outliers.

No monomer is involved in short contacts.

The following is a two-dimensional graphical depiction of Mogul quality analysis of bond lengths, bond angles, torsion angles, and ring geometry for all instances of the Ligand of Interest. In addition, ligands with molecular weight > 250 and outliers as shown on the validation Tables will also be included. For torsion angles, if less than 5% of the Mogul distribution of torsion angles is within 10 degrees of the torsion angle in question, then that torsion angle is considered an outlier. Any bond that is central to one or more torsion angles identified as an outlier by Mogul will be highlighted in the graph. For rings, the root-mean-square deviation (RMSD) between the ring in question and similar rings identified by Mogul is calculated over all ring torsion angles. If the average RMSD is greater than 60 degrees and the minimal RMSD between the ring in question and any Mogul-identified rings is also greater than 60 degrees, then that ring is considered an outlier. The outliers are highlighted in purple. The color gray indicates Mogul did not find sufficient equivalents in the CSD to analyse the geometry.





5.7 Other polymers [i](#)

There are no such residues in this entry.

5.8 Polymer linkage issues [i](#)

There are no chain breaks in this entry.

6 Fit of model and data [i](#)

6.1 Protein, DNA and RNA chains [i](#)

In the following table, the column labelled ‘#RSRZ> 2’ contains the number (and percentage) of RSRZ outliers, followed by percent RSRZ outliers for the chain as percentile scores relative to all X-ray entries and entries of similar resolution. The OWAB column contains the minimum, median, 95th percentile and maximum values of the occupancy-weighted average B-factor per residue. The column labelled ‘Q< 0.9’ lists the number of (and percentage) of residues with an average occupancy less than 0.9.

Mol	Chain	Analysed	<RSRZ>	#RSRZ>2	OWAB(Å ²)	Q<0.9
1	A	121/121 (100%)	0.04	1 (0%) 86 86	11, 15, 25, 43	0
1	B	121/121 (100%)	-0.01	1 (0%) 86 86	11, 15, 25, 43	0
1	C	121/121 (100%)	-0.04	1 (0%) 86 86	10, 15, 26, 45	0
1	D	121/121 (100%)	0.00	1 (0%) 86 86	10, 15, 25, 43	0
All	All	484/484 (100%)	-0.00	4 (0%) 86 86	10, 15, 27, 45	0

All (4) RSRZ outliers are listed below:

Mol	Chain	Res	Type	RSRZ
1	B	71	ASN	3.8
1	D	71	ASN	3.1
1	C	71	ASN	3.1
1	A	71	ASN	2.9

6.2 Non-standard residues in protein, DNA, RNA chains [i](#)

There are no non-standard protein/DNA/RNA residues in this entry.

6.3 Carbohydrates [i](#)

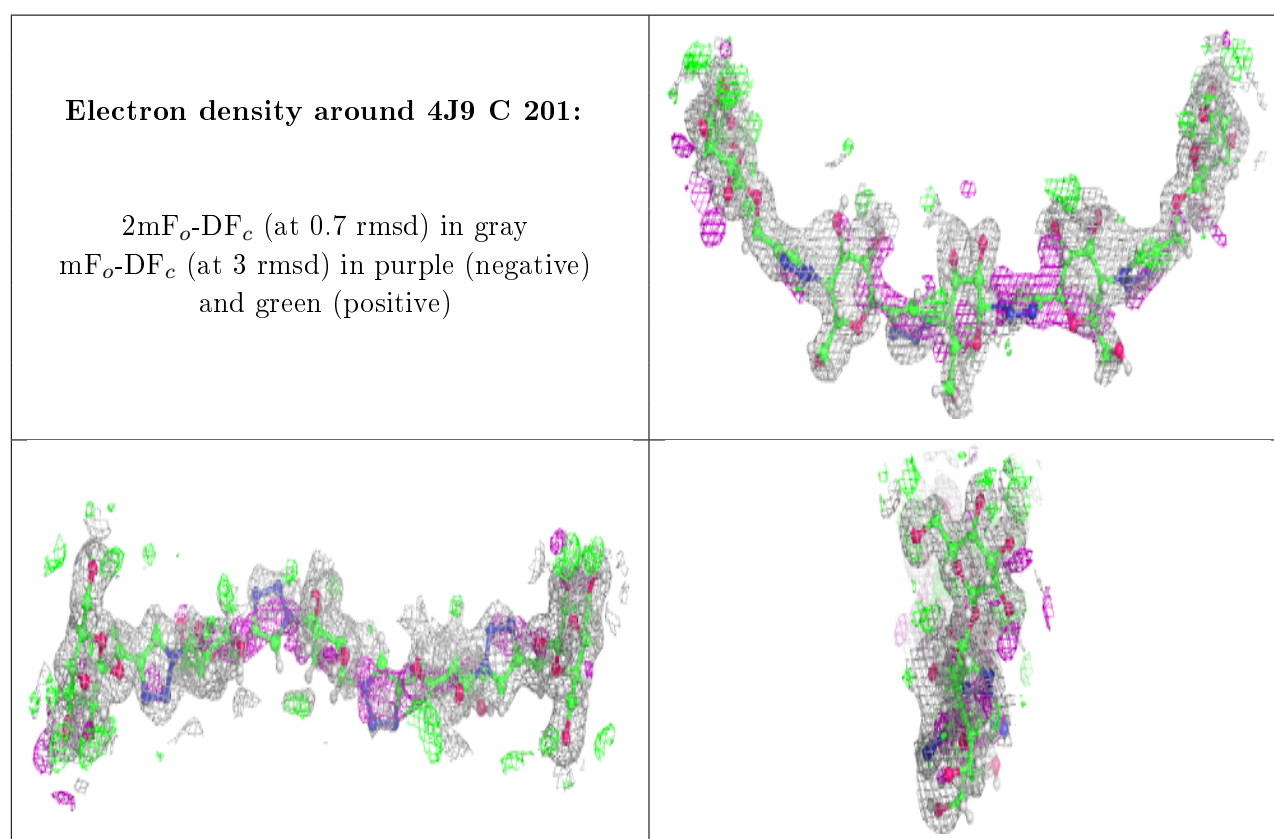
There are no carbohydrates in this entry.

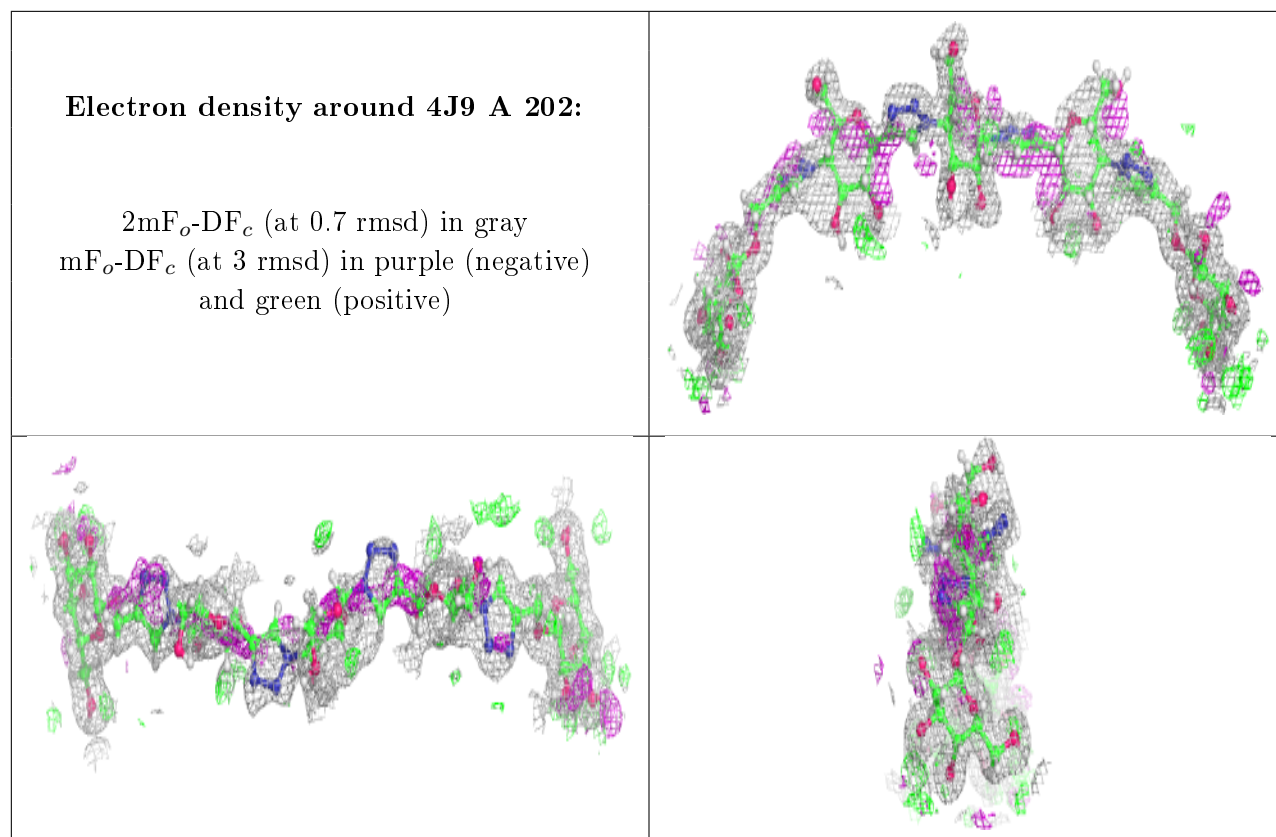
6.4 Ligands [i](#)

In the following table, the Atoms column lists the number of modelled atoms in the group and the number defined in the chemical component dictionary. The B-factors column lists the minimum, median, 95th percentile and maximum values of B factors of atoms in the group. The column labelled ‘Q< 0.9’ lists the number of atoms with occupancy less than 0.9.

Mol	Type	Chain	Res	Atoms	RSCC	RSR	B-factors(\AA^2)	Q<0.9
3	4J9	C	201	76/76	0.95	0.17	12,49,77,82	0
3	4J9	A	202	76/76	0.95	0.16	12,49,79,86	0
2	CA	D	900	1/1	0.98	0.10	12,12,12,12	0
2	CA	A	201	1/1	0.98	0.10	12,12,12,12	0
2	CA	B	900	1/1	0.98	0.10	13,13,13,13	0
2	CA	C	202	1/1	0.99	0.09	12,12,12,12	0

The following is a graphical depiction of the model fit to experimental electron density of all instances of the Ligand of Interest. In addition, ligands with molecular weight > 250 and outliers as shown on the geometry validation Tables will also be included. Each fit is shown from different orientation to approximate a three-dimensional view.





6.5 Other polymers [i](#)

There are no such residues in this entry.