



Full wwPDB X-ray Structure Validation Report ⓘ

Aug 10, 2020 – 12:54 PM BST

PDB ID : 6Z1T
Title : MAP3K14 (NIK) in complex with 4S/3694
Authors : Jacoby, E.; van Vlijmen, H.; Querolle, O.; Stansfield, I.; Meerpoel, L.; Versele, M.; Hynd, G.; Attar, R.
Deposited on : 2020-05-14
Resolution : 2.31 Å(reported)

This is a Full wwPDB X-ray Structure Validation Report for a publicly released PDB entry.

We welcome your comments at validation@mail.wwpdb.org

A user guide is available at

<https://www.wwpdb.org/validation/2017/XrayValidationReportHelp>

with specific help available everywhere you see the ⓘ symbol.

The following versions of software and data (see [references ⓘ](#)) were used in the production of this report:

MolProbity : 4.02b-467
Mogul : 1.8.5 (274361), CSD as541be (2020)
Xtriage (Phenix) : 1.13
EDS : 2.13.1
buster-report : 1.1.7 (2018)
Percentile statistics : 20191225.v01 (using entries in the PDB archive December 25th 2019)
Refmac : 5.8.0158
CCP4 : 7.0.044 (Gargrove)
Ideal geometry (proteins) : Engh & Huber (2001)
Ideal geometry (DNA, RNA) : Parkinson et al. (1996)
Validation Pipeline (wwPDB-VP) : 2.13.1

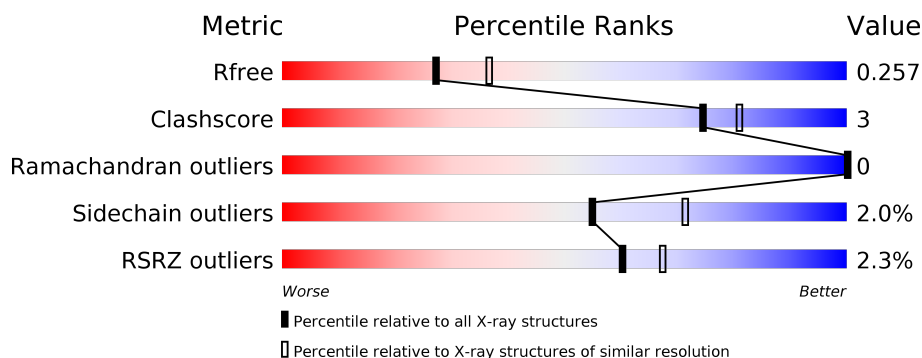
1 Overall quality at a glance

The following experimental techniques were used to determine the structure:

X-RAY DIFFRACTION

The reported resolution of this entry is 2.31 Å.

Percentile scores (ranging between 0-100) for global validation metrics of the entry are shown in the following graphic. The table shows the number of entries on which the scores are based.



Metric	Whole archive (#Entries)	Similar resolution (#Entries, resolution range(Å))
R_{free}	130704	5974 (2.34-2.30)
Clashscore	141614	6604 (2.34-2.30)
Ramachandran outliers	138981	6523 (2.34-2.30)
Sidechain outliers	138945	6523 (2.34-2.30)
RSRZ outliers	127900	5855 (2.34-2.30)

The table below summarises the geometric issues observed across the polymeric chains and their fit to the electron density. The red, orange, yellow and green segments on the lower bar indicate the fraction of residues that contain outliers for ≥ 3 , 2, 1 and 0 types of geometric quality criteria respectively. A grey segment represents the fraction of residues that are not modelled. The numeric value for each fraction is indicated below the corresponding segment, with a dot representing fractions $\leq 5\%$. The upper red bar (where present) indicates the fraction of residues that have poor fit to the electron density. The numeric value is given above the bar.

Mol	Chain	Length	Quality of chain
1	AAA	351	
1	BBB	351	

2 Entry composition [i](#)

There are 3 unique types of molecules in this entry. The entry contains 10163 atoms, of which 4850 are hydrogens and 0 are deuteriums.

In the tables below, the ZeroOcc column contains the number of atoms modelled with zero occupancy, the AltConf column contains the number of residues with at least one atom in alternate conformation and the Trace column contains the number of residues modelled with at most 2 atoms.

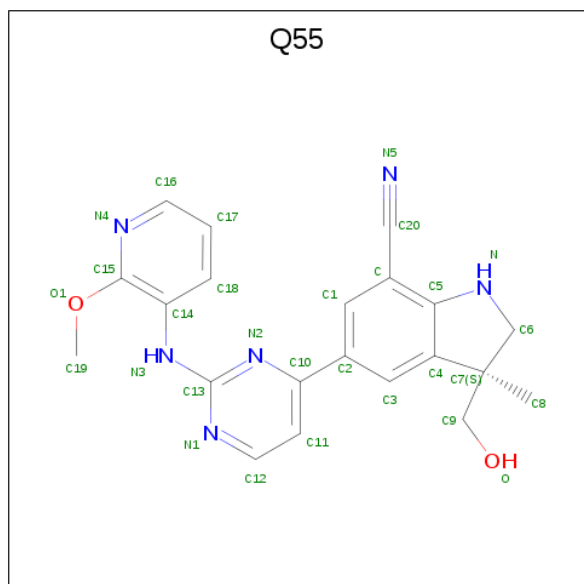
- Molecule 1 is a protein called Mitogen-activated protein kinase kinase kinase 14.

Mol	Chain	Residues	Atoms						ZeroOcc	AltConf	Trace
1	AAA	331	Total	C	H	N	O	S	0	1	0
			4966	1610	2410	454	474	18			
1	BBB	334	Total	C	H	N	O	S	0	0	0
			4946	1603	2402	453	470	18			

There are 2 discrepancies between the modelled and reference sequences:

Chain	Residue	Modelled	Actual	Comment	Reference
AAA	549	ASP	SER	conflict	UNP Q99558
BBB	549	ASP	SER	conflict	UNP Q99558

- Molecule 2 is 4S/3694 (three-letter code: Q55) (formula: C₂₁H₂₀N₆O₂).



Mol	Chain	Residues	Atoms						ZeroOcc	AltConf
2	AAA	1	Total	C	H	N	O		0	0
			48	21	19	6	2			

Continued on next page...

Continued from previous page...

Mol	Chain	Residues	Atoms					ZeroOcc	AltConf
2	BBB	1	Total	C	H	N	O	0	0
			48	21	19	6	2		

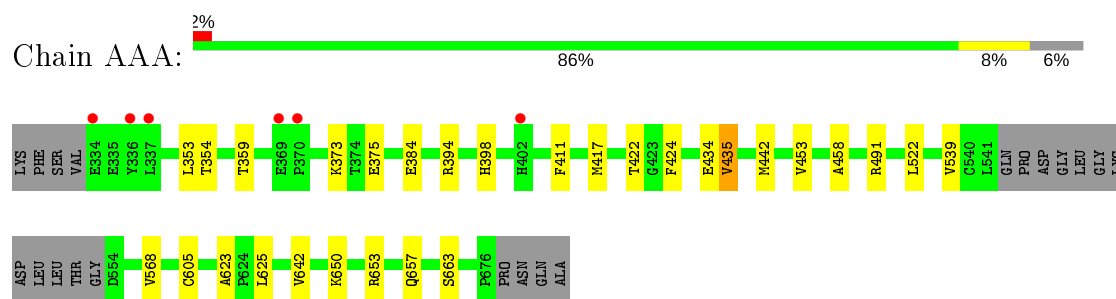
- Molecule 3 is water.

Mol	Chain	Residues	Atoms		ZeroOcc	AltConf
3	AAA	90	Total	O	0	0
			90	90		
3	BBB	65	Total	O	0	0
			65	65		

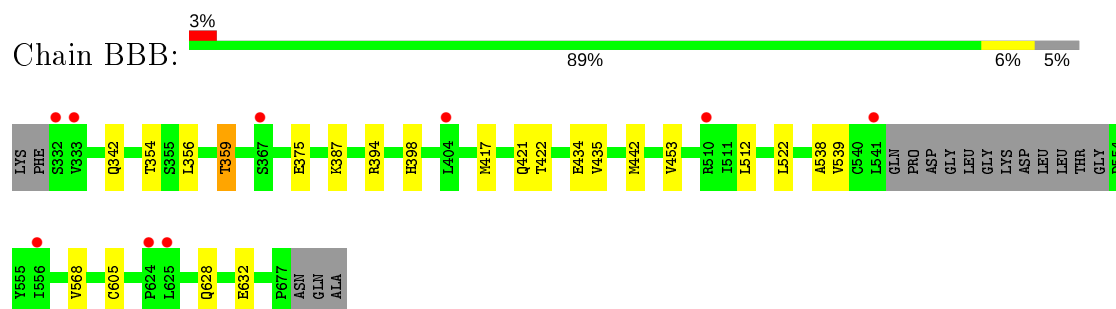
3 Residue-property plots [i](#)

These plots are drawn for all protein, RNA, DNA and oligosaccharide chains in the entry. The first graphic for a chain summarises the proportions of the various outlier classes displayed in the second graphic. The second graphic shows the sequence view annotated by issues in geometry and electron density. Residues are color-coded according to the number of geometric quality criteria for which they contain at least one outlier: green = 0, yellow = 1, orange = 2 and red = 3 or more. A red dot above a residue indicates a poor fit to the electron density ($RSRZ > 2$). Stretches of 2 or more consecutive residues without any outlier are shown as a green connector. Residues present in the sample, but not in the model, are shown in grey.

- Molecule 1: Mitogen-activated protein kinase kinase kinase 14



- Molecule 1: Mitogen-activated protein kinase kinase kinase 14



4 Data and refinement statistics

Property	Value	Source
Space group	P 41	Depositor
Cell constants a, b, c, α , β , γ	84.50 Å 84.50 Å 118.72 Å 90.00° 90.00° 90.00°	Depositor
Resolution (Å)	84.64 – 2.31 84.50 – 2.31	Depositor EDS
% Data completeness (in resolution range)	99.9 (84.64-2.31) 100.0 (84.50-2.31)	Depositor EDS
R_{merge}	(Not available)	Depositor
R_{sym}	(Not available)	Depositor
$\langle I/\sigma(I) \rangle$ ¹	2.50 (at 2.32 Å)	Xtriage
Refinement program	REFMAC 5.8.0258	Depositor
R, R_{free}	0.197 , 0.256 0.200 , 0.257	Depositor DCC
R_{free} test set	1827 reflections (5.00%)	wwPDB-VP
Wilson B-factor (Å ²)	41.3	Xtriage
Anisotropy	0.045	Xtriage
Bulk solvent k_{sol} (e/Å ³), B_{sol} (Å ²)	0.38 , 22.2	EDS
L-test for twinning ²	$\langle L \rangle = 0.42$, $\langle L^2 \rangle = 0.25$	Xtriage
Estimated twinning fraction	0.158 for h,-k,-l	Xtriage
F_o, F_c correlation	0.95	EDS
Total number of atoms	10163	wwPDB-VP
Average B, all atoms (Å ²)	46.0	wwPDB-VP

Xtriage's analysis on translational NCS is as follows: *The largest off-origin peak in the Patterson function is 3.53% of the height of the origin peak. No significant pseudotranslation is detected.*

¹Intensities estimated from amplitudes.

²Theoretical values of $\langle |L| \rangle$, $\langle L^2 \rangle$ for acentric reflections are 0.5, 0.333 respectively for untwinned datasets, and 0.375, 0.2 for perfectly twinned datasets.

5 Model quality

5.1 Standard geometry

Bond lengths and bond angles in the following residue types are not validated in this section: Q55

The Z score for a bond length (or angle) is the number of standard deviations the observed value is removed from the expected value. A bond length (or angle) with $|Z| > 5$ is considered an outlier worth inspection. RMSZ is the root-mean-square of all Z scores of the bond lengths (or angles).

Mol	Chain	Bond lengths		Bond angles	
		RMSZ	# Z >5	RMSZ	# Z >5
1	AAA	0.63	0/2617	0.73	0/3549
1	BBB	0.65	0/2605	0.73	0/3535
All	All	0.64	0/5222	0.73	0/7084

There are no bond length outliers.

There are no bond angle outliers.

There are no chirality outliers.

There are no planarity outliers.

5.2 Too-close contacts

In the following table, the Non-H and H(model) columns list the number of non-hydrogen atoms and hydrogen atoms in the chain respectively. The H(added) column lists the number of hydrogen atoms added and optimized by MolProbity. The Clashes column lists the number of clashes within the asymmetric unit, whereas Symm-Clashes lists symmetry related clashes.

Mol	Chain	Non-H	H(model)	H(added)	Clashes	Symm-Clashes
1	AAA	2556	2410	2502	17	0
1	BBB	2544	2402	2493	16	0
2	AAA	29	19	0	0	0
2	BBB	29	19	0	0	0
3	AAA	90	0	0	2	0
3	BBB	65	0	0	4	0
All	All	5313	4850	4995	32	0

The all-atom clashscore is defined as the number of clashes found per 1000 atoms (including hydrogen atoms). The all-atom clashscore for this structure is 3.

All (32) close contacts within the same asymmetric unit are listed below, sorted by their clash

magnitude.

Atom-1	Atom-2	Interatomic distance (Å)	Clash overlap (Å)
1:BBB:422:THR:HB	3:BBB:807:HOH:O	1.63	0.96
1:AAA:568:VAL:HG11	1:AAA:605:CYS:O	1.87	0.74
1:AAA:623:ALA:HB1	1:AAA:657:GLN:HE21	1.67	0.60
1:AAA:394:ARG:H	1:AAA:398:HIS:HD2	1.51	0.58
1:AAA:422:THR:HG22	1:AAA:424:PHE:HD2	1.71	0.56
1:AAA:375:GLU:O	1:AAA:394:ARG:NH2	2.39	0.55
1:BBB:394:ARG:H	1:BBB:398:HIS:HD2	1.55	0.55
1:BBB:359:THR:CG2	3:BBB:811:HOH:O	2.58	0.52
1:BBB:354:THR:HG23	1:BBB:442:MET:HG2	1.92	0.51
1:BBB:342:GLN:HE21	1:BBB:359:THR:HG21	1.76	0.50
1:BBB:356:LEU:O	1:BBB:359:THR:HB	2.12	0.50
1:BBB:453:VAL:HG21	1:BBB:522:LEU:HD12	1.94	0.50
1:AAA:491:ARG:NH2	3:AAA:801:HOH:O	2.41	0.49
1:BBB:512:LEU:HG	3:BBB:819:HOH:O	2.12	0.49
1:BBB:375:GLU:O	1:BBB:394:ARG:NH2	2.42	0.48
1:BBB:568:VAL:HG11	1:BBB:605:CYS:O	2.15	0.47
1:AAA:491:ARG:NH1	1:AAA:663:SER:O	2.48	0.46
1:AAA:568:VAL:CG1	1:AAA:605:CYS:O	2.59	0.46
1:AAA:411:PHE:CD1	1:AAA:435:VAL:HG13	2.51	0.45
1:BBB:398:HIS:HA	1:BBB:421:GLN:HE22	1.82	0.45
1:BBB:605:CYS:HB2	3:BBB:834:HOH:O	2.18	0.44
1:BBB:628:GLN:O	1:BBB:632:GLU:HG3	2.19	0.43
1:AAA:453:VAL:HG21	1:AAA:522:LEU:HD12	2.00	0.43
1:AAA:625:LEU:H	1:AAA:657:GLN:HE22	1.65	0.43
1:BBB:512:LEU:HD13	1:BBB:539:VAL:HG22	2.01	0.43
1:AAA:354:THR:HG23	1:AAA:442:MET:HG2	2.00	0.42
1:AAA:653:ARG:NH2	3:AAA:806:HOH:O	2.52	0.42
1:AAA:353:LEU:HD11	1:AAA:458:ALA:HB3	2.01	0.42
1:AAA:394:ARG:H	1:AAA:398:HIS:CD2	2.35	0.42
1:AAA:642:VAL:HG11	1:AAA:650:LYS:HE3	2.01	0.42
1:BBB:512:LEU:O	1:BBB:538:ALA:HA	2.20	0.41
1:AAA:435:VAL:HG23	1:BBB:434:GLU:HG3	2.02	0.41

There are no symmetry-related clashes.

5.3 Torsion angles

5.3.1 Protein backbone

In the following table, the Percentiles column shows the percent Ramachandran outliers of the chain as a percentile score with respect to all X-ray entries followed by that with respect to entries of similar resolution.

The Analysed column shows the number of residues for which the backbone conformation was analysed, and the total number of residues.

Mol	Chain	Analysed	Favoured	Allowed	Outliers	Percentiles	
1	AAA	328/351 (93%)	313 (95%)	15 (5%)	0	100	100
1	BBB	330/351 (94%)	316 (96%)	14 (4%)	0	100	100
All	All	658/702 (94%)	629 (96%)	29 (4%)	0	100	100

There are no Ramachandran outliers to report.

5.3.2 Protein sidechains

In the following table, the Percentiles column shows the percent sidechain outliers of the chain as a percentile score with respect to all X-ray entries followed by that with respect to entries of similar resolution.

The Analysed column shows the number of residues for which the sidechain conformation was analysed, and the total number of residues.

Mol	Chain	Analysed	Rotameric	Outliers	Percentiles	
1	AAA	270/291 (93%)	263 (97%)	7 (3%)	46	62
1	BBB	269/291 (92%)	265 (98%)	4 (2%)	65	79
All	All	539/582 (93%)	528 (98%)	11 (2%)	55	71

All (11) residues with a non-rotameric sidechain are listed below:

Mol	Chain	Res	Type
1	AAA	359	THR
1	AAA	373	LYS
1	AAA	384	GLU
1	AAA	417	MET
1	AAA	434	GLU
1	AAA	435	VAL
1	AAA	539	VAL
1	BBB	359	THR

Continued on next page...

Continued from previous page...

Mol	Chain	Res	Type
1	BBB	387	LYS
1	BBB	417	MET
1	BBB	435	VAL

Some sidechains can be flipped to improve hydrogen bonding and reduce clashes. There are no such sidechains identified.

5.3.3 RNA [i](#)

There are no RNA molecules in this entry.

5.4 Non-standard residues in protein, DNA, RNA chains [i](#)

There are no non-standard protein/DNA/RNA residues in this entry.

5.5 Carbohydrates [i](#)

There are no monosaccharides in this entry.

5.6 Ligand geometry [i](#)

2 ligands are modelled in this entry.

In the following table, the Counts columns list the number of bonds (or angles) for which Mogul statistics could be retrieved, the number of bonds (or angles) that are observed in the model and the number of bonds (or angles) that are defined in the Chemical Component Dictionary. The Link column lists molecule types, if any, to which the group is linked. The Z score for a bond length (or angle) is the number of standard deviations the observed value is removed from the expected value. A bond length (or angle) with $|Z| > 2$ is considered an outlier worth inspection. RMSZ is the root-mean-square of all Z scores of the bond lengths (or angles).

Mol	Type	Chain	Res	Link	Bond lengths			Bond angles		
					Counts	RMSZ	$\# Z > 2$	Counts	RMSZ	$\# Z > 2$
2	Q55	BBB	701	-	31,32,32	0.56	1 (3%)	37,46,46	1.12	3 (8%)
2	Q55	AAA	701	-	31,32,32	0.61	1 (3%)	37,46,46	1.11	2 (5%)

In the following table, the Chirals column lists the number of chiral outliers, the number of chiral centers analysed, the number of these observed in the model and the number defined in the Chemical Component Dictionary. Similar counts are reported in the Torsion and Rings columns. '-' means no outliers of that kind were identified.

Mol	Type	Chain	Res	Link	Chirals	Torsions	Rings
2	Q55	BBB	701	-	-	0/15/27/27	0/4/4/4
2	Q55	AAA	701	-	-	1/15/27/27	0/4/4/4

All (2) bond length outliers are listed below:

Mol	Chain	Res	Type	Atoms	Z	Observed(Å)	Ideal(Å)
2	AAA	701	Q55	C9-C7	-2.62	1.51	1.54
2	BBB	701	Q55	C9-C7	-2.01	1.52	1.54

All (5) bond angle outliers are listed below:

Mol	Chain	Res	Type	Atoms	Z	Observed(°)	Ideal(°)
2	BBB	701	Q55	C4-C5-N	-3.19	107.55	111.24
2	AAA	701	Q55	C4-C5-N	-3.11	107.64	111.24
2	AAA	701	Q55	C-C5-N	2.87	132.03	128.99
2	BBB	701	Q55	C-C5-N	2.70	131.85	128.99
2	BBB	701	Q55	C10-N2-C13	2.03	118.36	116.69

There are no chirality outliers.

All (1) torsion outliers are listed below:

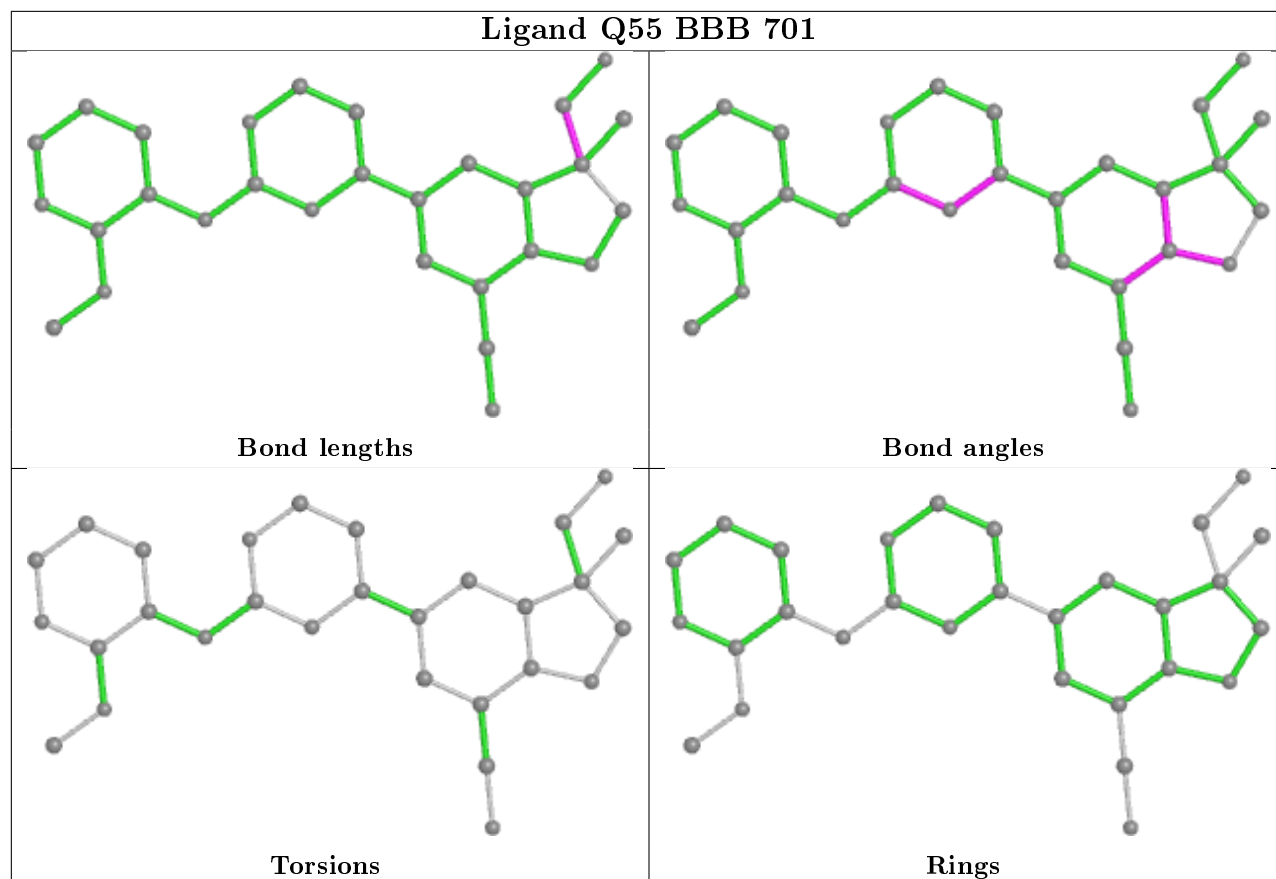
Mol	Chain	Res	Type	Atoms
2	AAA	701	Q55	C6-C7-C9-O

There are no ring outliers.

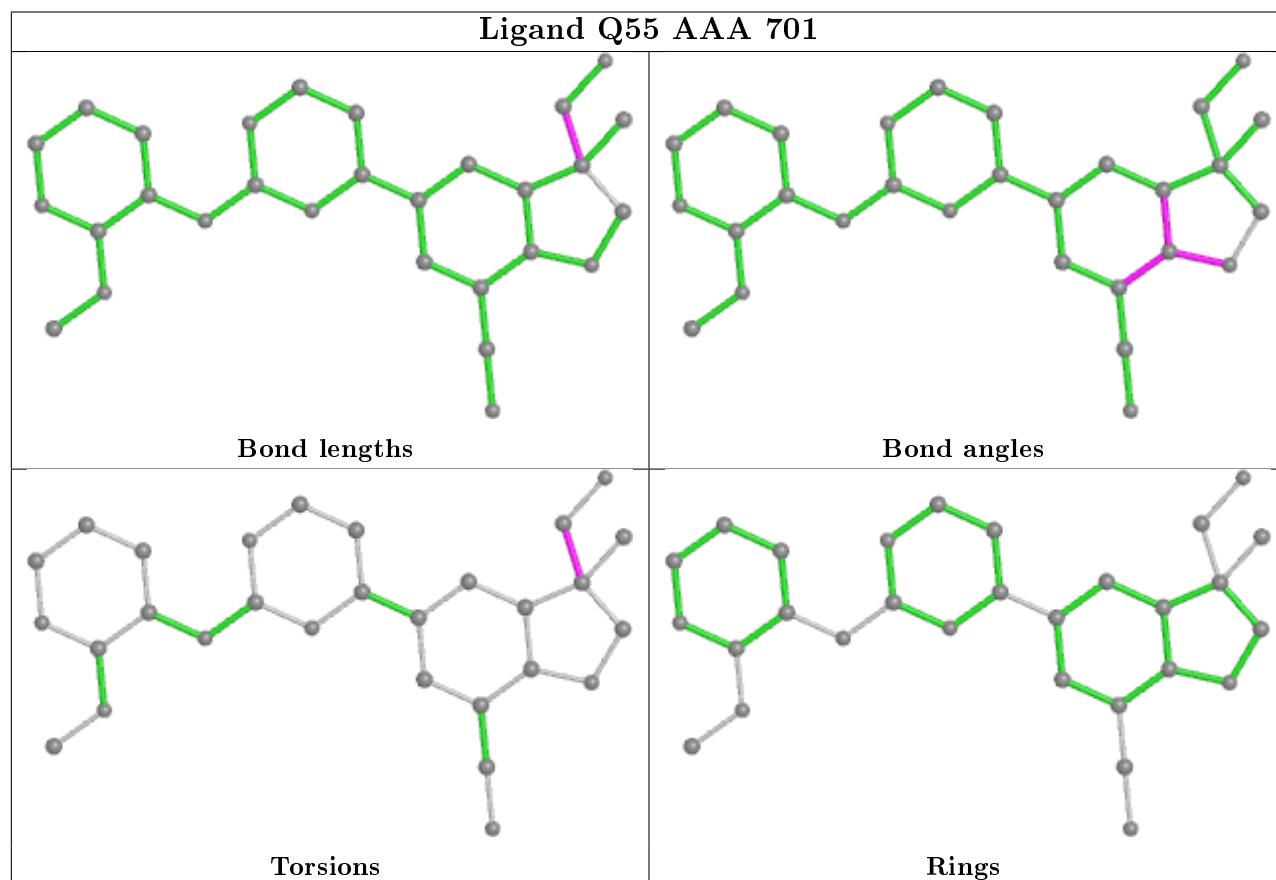
No monomer is involved in short contacts.

The following is a two-dimensional graphical depiction of Mogul quality analysis of bond lengths, bond angles, torsion angles, and ring geometry for all instances of the Ligand of Interest. In addition, ligands with molecular weight > 250 and outliers as shown on the validation Tables will also be included. For torsion angles, if less than 5% of the Mogul distribution of torsion angles is within 10 degrees of the torsion angle in question, then that torsion angle is considered an outlier. Any bond that is central to one or more torsion angles identified as an outlier by Mogul will be highlighted in the graph. For rings, the root-mean-square deviation (RMSD) between the ring in question and similar rings identified by Mogul is calculated over all ring torsion angles. If the average RMSD is greater than 60 degrees and the minimal RMSD between the ring in question and any Mogul-identified rings is also greater than 60 degrees, then that ring is considered an outlier. The outliers are highlighted in purple. The color gray indicates Mogul did not find sufficient equivalents in the CSD to analyse the geometry.

Ligand Q55 BBB 701



Ligand Q55 AAA 701



5.7 Other polymers

There are no such residues in this entry.

5.8 Polymer linkage issues

There are no chain breaks in this entry.

6 Fit of model and data [i](#)

6.1 Protein, DNA and RNA chains [i](#)

In the following table, the column labelled ‘#RSRZ> 2’ contains the number (and percentage) of RSRZ outliers, followed by percent RSRZ outliers for the chain as percentile scores relative to all X-ray entries and entries of similar resolution. The OWAB column contains the minimum, median, 95th percentile and maximum values of the occupancy-weighted average B-factor per residue. The column labelled ‘Q< 0.9’ lists the number of (and percentage) of residues with an average occupancy less than 0.9.

Mol	Chain	Analysed	<RSRZ>	#RSRZ>2	OWAB(Å ²)	Q<0.9
1	AAA	331/351 (94%)	0.24	6 (1%) 68 75	26, 40, 69, 92	0
1	BBB	334/351 (95%)	0.36	9 (2%) 54 62	30, 48, 79, 109	0
All	All	665/702 (94%)	0.30	15 (2%) 60 67	26, 43, 75, 109	0

All (15) RSRZ outliers are listed below:

Mol	Chain	Res	Type	RSRZ
1	BBB	332	SER	5.8
1	AAA	402	HIS	3.7
1	BBB	556	ILE	3.3
1	AAA	334	GLU	3.3
1	AAA	336	TYR	3.2
1	AAA	369	GLU	3.2
1	BBB	333	VAL	3.0
1	BBB	541	LEU	2.9
1	BBB	367	SER	2.8
1	AAA	370	PRO	2.6
1	AAA	337	LEU	2.6
1	BBB	510	ARG	2.6
1	BBB	625	LEU	2.5
1	BBB	404	LEU	2.2
1	BBB	624	PRO	2.1

6.2 Non-standard residues in protein, DNA, RNA chains [i](#)

There are no non-standard protein/DNA/RNA residues in this entry.

6.3 Carbohydrates [i](#)

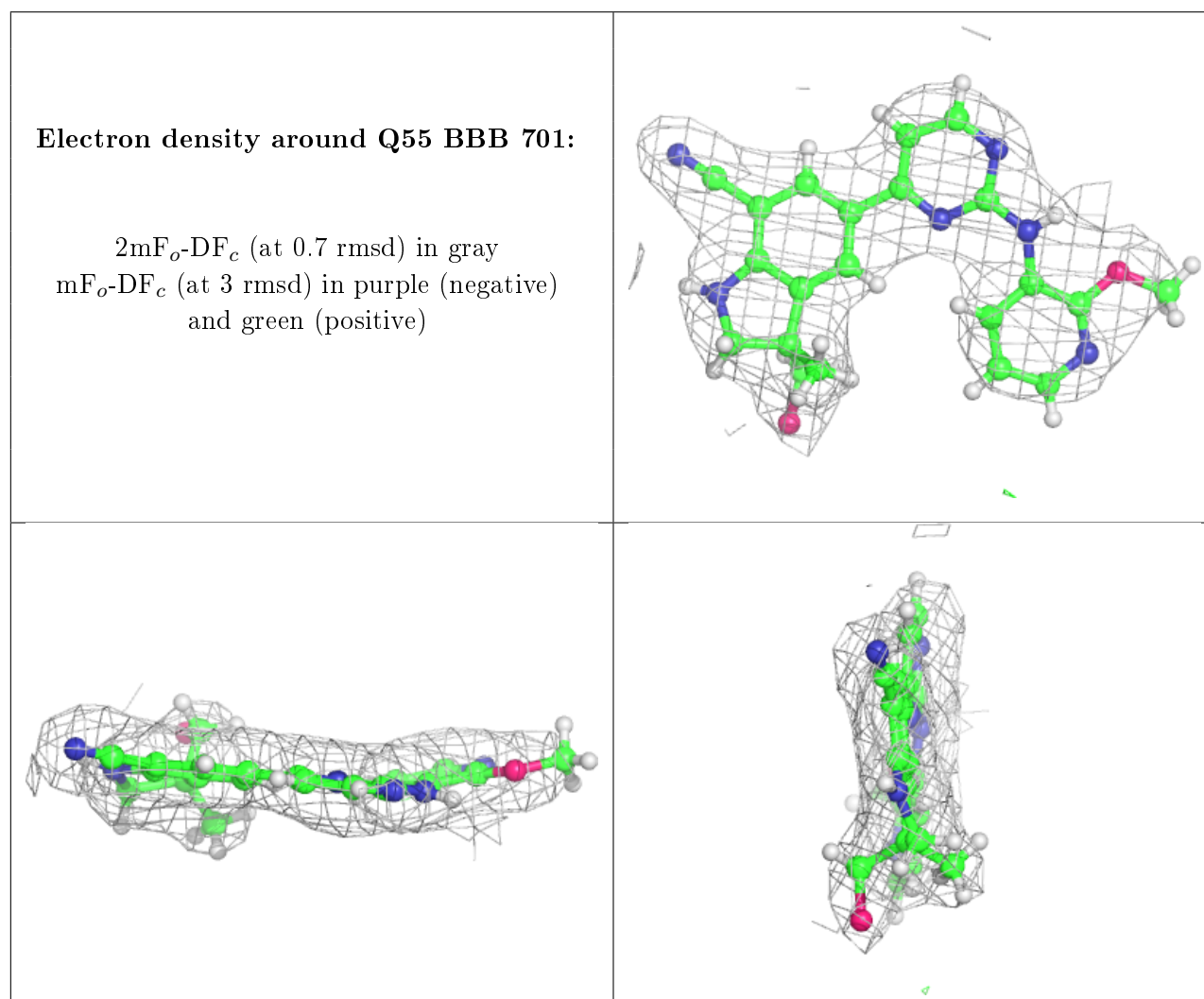
There are no monosaccharides in this entry.

6.4 Ligands ⓘ

In the following table, the Atoms column lists the number of modelled atoms in the group and the number defined in the chemical component dictionary. The B-factors column lists the minimum, median, 95th percentile and maximum values of B factors of atoms in the group. The column labelled 'Q< 0.9' lists the number of atoms with occupancy less than 0.9.

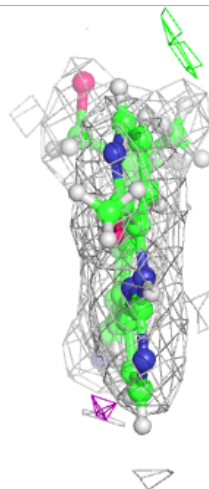
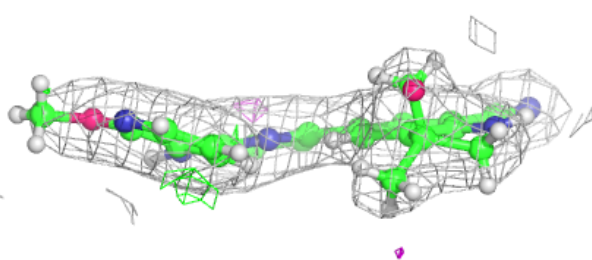
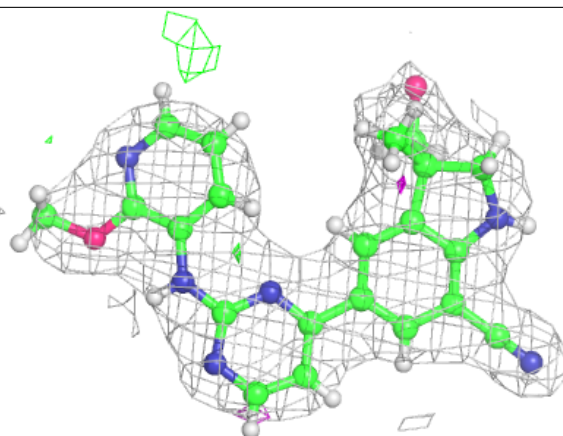
Mol	Type	Chain	Res	Atoms	RSCC	RSR	B-factors(Å ²)	Q<0.9
2	Q55	BBB	701	29/29	0.95	0.15	36,39,47,47	0
2	Q55	AAA	701	29/29	0.95	0.16	29,31,40,41	0

The following is a graphical depiction of the model fit to experimental electron density of all instances of the Ligand of Interest. In addition, ligands with molecular weight > 250 and outliers as shown on the geometry validation Tables will also be included. Each fit is shown from different orientation to approximate a three-dimensional view.



Electron density around Q55 AAA 701:

$2mF_o-DF_c$ (at 0.7 rmsd) in gray
 mF_o-DF_c (at 3 rmsd) in purple (negative)
and green (positive)



6.5 Other polymers [i](#)

There are no such residues in this entry.