



Full wwPDB X-ray Structure Validation Report ⓘ

Feb 1, 2021 – 04:10 PM EST

PDB ID : 4Z3N
Title : Crystal structure of the MATE transporter ClbM
Authors : Mousa, J.J.; Bruner, S.D.
Deposited on : 2015-03-31
Resolution : 2.70 Å(reported)

This is a Full wwPDB X-ray Structure Validation Report for a publicly released PDB entry.

We welcome your comments at validation@mail.wwpdb.org

A user guide is available at

<https://www.wwpdb.org/validation/2017/XrayValidationReportHelp>

with specific help available everywhere you see the ⓘ symbol.

The following versions of software and data (see [references ⓘ](#)) were used in the production of this report:

MolProbity : 4.02b-467
Mogul : 1.8.5 (274361), CSD as541be (2020)
Xtriage (Phenix) : 1.13
EDS : 2.16
buster-report : 1.1.7 (2018)
Percentile statistics : 20191225.v01 (using entries in the PDB archive December 25th 2019)
Refmac : 5.8.0158
CCP4 : 7.0.044 (Gargrove)
Ideal geometry (proteins) : Engh & Huber (2001)
Ideal geometry (DNA, RNA) : Parkinson et al. (1996)
Validation Pipeline (wwPDB-VP) : 2.16

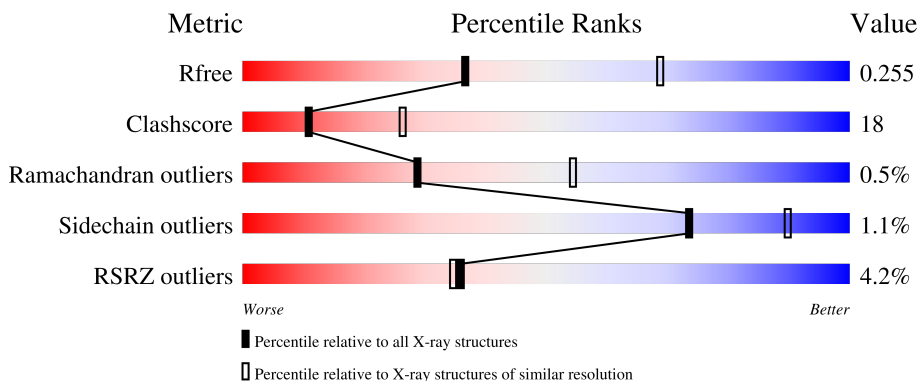
1 Overall quality at a glance

The following experimental techniques were used to determine the structure:

X-RAY DIFFRACTION

The reported resolution of this entry is 2.70 Å.

Percentile scores (ranging between 0-100) for global validation metrics of the entry are shown in the following graphic. The table shows the number of entries on which the scores are based.



Metric	Whole archive (#Entries)	Similar resolution (#Entries, resolution range(Å))
R_{free}	130704	2808 (2.70-2.70)
Clashscore	141614	3122 (2.70-2.70)
Ramachandran outliers	138981	3069 (2.70-2.70)
Sidechain outliers	138945	3069 (2.70-2.70)
RSRZ outliers	127900	2737 (2.70-2.70)

The table below summarises the geometric issues observed across the polymeric chains and their fit to the electron density. The red, orange, yellow and green segments of the lower bar indicate the fraction of residues that contain outliers for ≥ 3 , 2, 1 and 0 types of geometric quality criteria respectively. A grey segment represents the fraction of residues that are not modelled. The numeric value for each fraction is indicated below the corresponding segment, with a dot representing fractions $\leq 5\%$. The upper red bar (where present) indicates the fraction of residues that have poor fit to the electron density. The numeric value is given above the bar.

Mol	Chain	Length	Quality of chain
1	A	499	

2 Entry composition

There are 4 unique types of molecules in this entry. The entry contains 3473 atoms, of which 6 are hydrogens and 0 are deuteriums.

In the tables below, the ZeroOcc column contains the number of atoms modelled with zero occupancy, the AltConf column contains the number of residues with at least one atom in alternate conformation and the Trace column contains the number of residues modelled with at most 2 atoms.

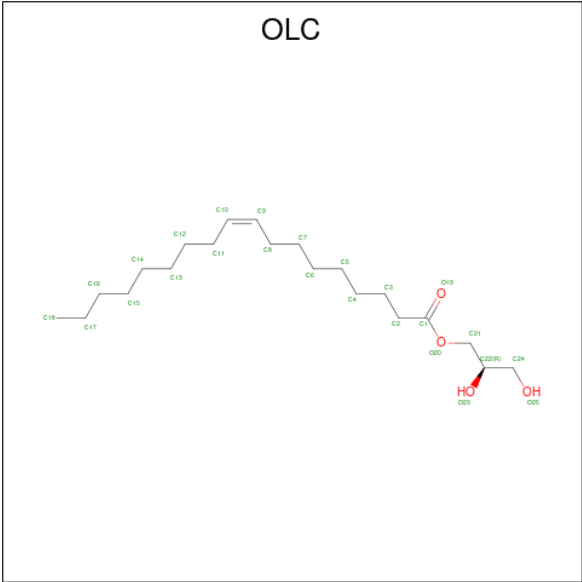
- Molecule 1 is a protein called Putative drug/sodium antiporter.

Mol	Chain	Residues	Atoms					ZeroOcc	AltConf	Trace
1	A	431	Total	C	N	O	S	0	0	0
			3345	2248	529	541	27			

There are 20 discrepancies between the modelled and reference sequences:

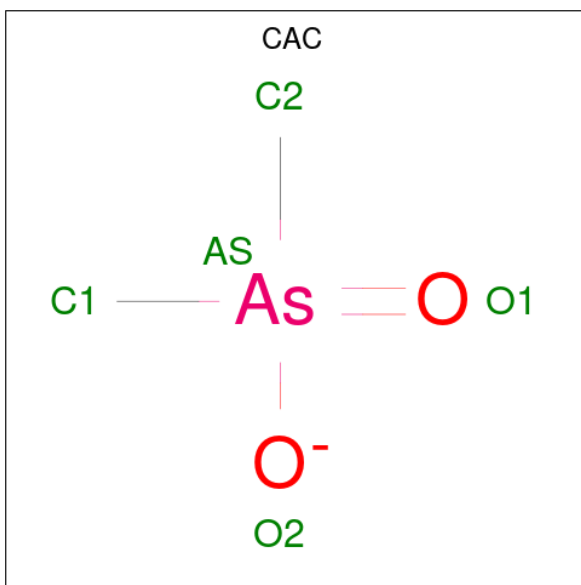
Chain	Residue	Modelled	Actual	Comment	Reference
A	480	ALA	-	expression tag	UNP Q0P7K3
A	481	ASP	-	expression tag	UNP Q0P7K3
A	482	ASP	-	expression tag	UNP Q0P7K3
A	483	ASP	-	expression tag	UNP Q0P7K3
A	484	ASP	-	expression tag	UNP Q0P7K3
A	485	LYS	-	expression tag	UNP Q0P7K3
A	486	LEU	-	expression tag	UNP Q0P7K3
A	487	ALA	-	expression tag	UNP Q0P7K3
A	488	ALA	-	expression tag	UNP Q0P7K3
A	489	ALA	-	expression tag	UNP Q0P7K3
A	490	HIS	-	expression tag	UNP Q0P7K3
A	491	HIS	-	expression tag	UNP Q0P7K3
A	492	HIS	-	expression tag	UNP Q0P7K3
A	493	HIS	-	expression tag	UNP Q0P7K3
A	494	HIS	-	expression tag	UNP Q0P7K3
A	495	HIS	-	expression tag	UNP Q0P7K3
A	496	HIS	-	expression tag	UNP Q0P7K3
A	497	HIS	-	expression tag	UNP Q0P7K3
A	498	HIS	-	expression tag	UNP Q0P7K3
A	499	HIS	-	expression tag	UNP Q0P7K3

- Molecule 2 is (2R)-2,3-dihydroxypropyl (9Z)-octadec-9-enoate (three-letter code: OLC) (formula: C₂₁H₄₀O₄).



Mol	Chain	Residues	Atoms	ZeroOcc	AltConf
2	A	1	Total C O 25 21 4	0	0
2	A	1	Total C 9 9	0	0
2	A	1	Total C 9 9	0	0
2	A	1	Total C 6 6	0	0
2	A	1	Total C 13 13	0	0
2	A	1	Total C 6 6	0	0
2	A	1	Total C 8 8	0	0

- Molecule 3 is CACODYLATE ION (three-letter code: CAC) (formula: C₂H₆AsO₂).



Mol	Chain	Residues	Atoms					ZeroOcc	AltConf
3	A	1	Total	As	C	H	O	0	0
			11	1	2	6	2		

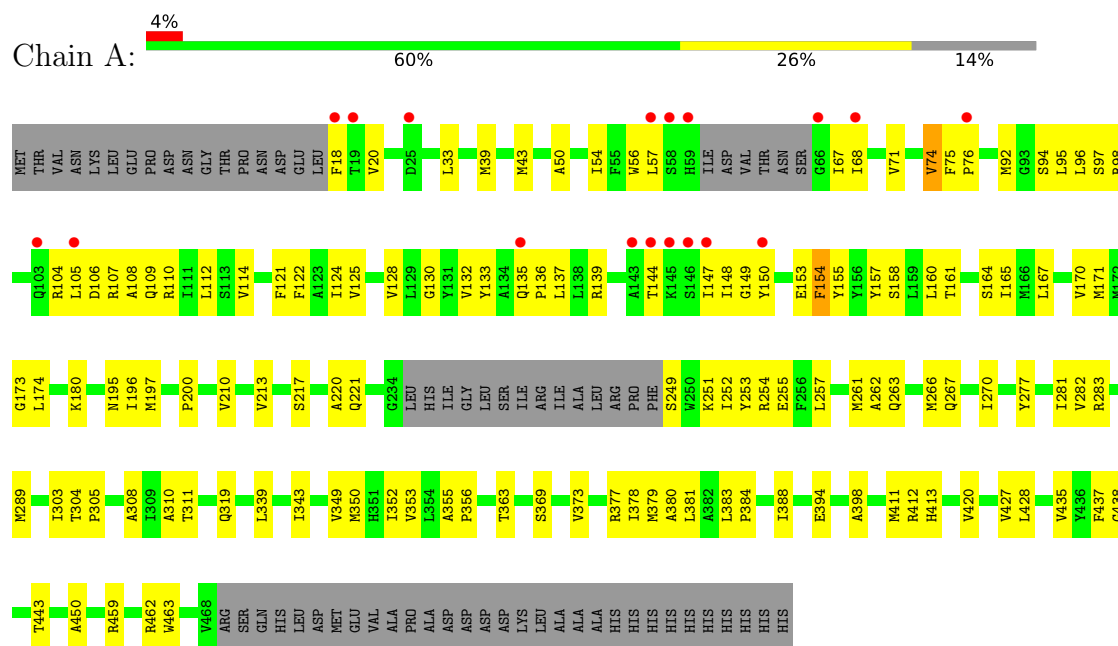
- Molecule 4 is water.

Mol	Chain	Residues	Atoms		ZeroOcc	AltConf
4	A	41	Total	O	0	0
			41	41		

3 Residue-property plots [i](#)

These plots are drawn for all protein, RNA, DNA and oligosaccharide chains in the entry. The first graphic for a chain summarises the proportions of the various outlier classes displayed in the second graphic. The second graphic shows the sequence view annotated by issues in geometry and electron density. Residues are color-coded according to the number of geometric quality criteria for which they contain at least one outlier: green = 0, yellow = 1, orange = 2 and red = 3 or more. A red dot above a residue indicates a poor fit to the electron density ($RSRZ > 2$). Stretches of 2 or more consecutive residues without any outlier are shown as a green connector. Residues present in the sample, but not in the model, are shown in grey.

- Molecule 1: Putative drug/sodium antiporter



4 Data and refinement statistics

Property	Value	Source
Space group	P 31 2 1	Depositor
Cell constants a, b, c, α , β , γ	79.46Å 79.46Å 174.92Å 90.00° 90.00° 120.00°	Depositor
Resolution (Å)	39.73 – 2.70 39.73 – 2.70	Depositor EDS
% Data completeness (in resolution range)	96.6 (39.73-2.70) 96.6 (39.73-2.70)	Depositor EDS
R_{merge}	0.10	Depositor
R_{sym}	(Not available)	Depositor
$\langle I/\sigma(I) \rangle$ ¹	2.49 (at 2.69Å)	Xtriage
Refinement program	PHENIX 1.8.4_1496	Depositor
R, R_{free}	0.206 , 0.255 0.208 , 0.255	Depositor DCC
R_{free} test set	1871 reflections (10.62%)	wwPDB-VP
Wilson B-factor (Å ²)	46.4	Xtriage
Anisotropy	0.364	Xtriage
Bulk solvent k_{sol} (e/Å ³), B_{sol} (Å ²)	0.32 , 60.8	EDS
L-test for twinning ²	$\langle L \rangle = 0.49$, $\langle L^2 \rangle = 0.32$	Xtriage
Estimated twinning fraction	0.033 for -h,-k,l	Xtriage
F_o, F_c correlation	0.92	EDS
Total number of atoms	3473	wwPDB-VP
Average B, all atoms (Å ²)	42.0	wwPDB-VP

Xtriage's analysis on translational NCS is as follows: *The largest off-origin peak in the Patterson function is 7.46% of the height of the origin peak. No significant pseudotranslation is detected.*

¹Intensities estimated from amplitudes.

²Theoretical values of $\langle |L| \rangle$, $\langle L^2 \rangle$ for acentric reflections are 0.5, 0.333 respectively for untwinned datasets, and 0.375, 0.2 for perfectly twinned datasets.

5 Model quality [i](#)

5.1 Standard geometry [i](#)

Bond lengths and bond angles in the following residue types are not validated in this section: CAC, OLC

The Z score for a bond length (or angle) is the number of standard deviations the observed value is removed from the expected value. A bond length (or angle) with $|Z| > 5$ is considered an outlier worth inspection. RMSZ is the root-mean-square of all Z scores of the bond lengths (or angles).

Mol	Chain	Bond lengths		Bond angles	
		RMSZ	$\# Z > 5$	RMSZ	$\# Z > 5$
1	A	0.45	1/3421 (0.0%)	0.57	0/4651

All (1) bond length outliers are listed below:

Mol	Chain	Res	Type	Atoms	Z	Observed(Å)	Ideal(Å)
1	A	154	PHE	CE1-CZ	5.04	1.47	1.37

There are no bond angle outliers.

There are no chirality outliers.

There are no planarity outliers.

5.2 Too-close contacts [i](#)

In the following table, the Non-H and H(model) columns list the number of non-hydrogen atoms and hydrogen atoms in the chain respectively. The H(added) column lists the number of hydrogen atoms added and optimized by MolProbity. The Clashes column lists the number of clashes within the asymmetric unit, whereas Symm-Clashes lists symmetry-related clashes.

Mol	Chain	Non-H	H(model)	H(added)	Clashes	Symm-Clashes
1	A	3345	0	3542	127	0
2	A	76	0	125	8	0
3	A	5	6	0	2	0
4	A	41	0	0	23	0
All	All	3467	6	3667	129	0

The all-atom clashscore is defined as the number of clashes found per 1000 atoms (including hydrogen atoms). The all-atom clashscore for this structure is 18.

All (129) close contacts within the same asymmetric unit are listed below, sorted by their clash

magnitude.

Atom-1	Atom-2	Interatomic distance (Å)	Clash overlap (Å)
1:A:350:MET:SD	4:A:637:HOH:O	2.03	1.14
1:A:350:MET:CG	4:A:637:HOH:O	2.07	1.00
1:A:443:THR:O	4:A:601:HOH:O	1.81	0.97
1:A:56:TRP:NE1	4:A:604:HOH:O	1.99	0.91
1:A:107:ARG:NH2	4:A:603:HOH:O	1.91	0.90
1:A:180:LYS:NZ	4:A:602:HOH:O	1.82	0.88
1:A:135:GLN:HB3	4:A:607:HOH:O	1.77	0.84
1:A:144:THR:HB	1:A:148:ILE:HB	1.61	0.83
1:A:377:ARG:HD3	2:A:503:OLC:H6A	1.65	0.76
1:A:363:THR:O	4:A:605:HOH:O	2.04	0.76
1:A:18:PHE:CE2	1:A:105:LEU:HD13	2.23	0.73
1:A:196:ILE:O	4:A:604:HOH:O	2.06	0.73
1:A:352:ILE:HD11	1:A:380:ALA:HB3	1.69	0.73
1:A:133:TYR:O	1:A:137:LEU:HG	1.90	0.71
1:A:350:MET:HG2	4:A:637:HOH:O	1.79	0.71
1:A:68:ILE:HG12	1:A:150:TYR:CE1	2.27	0.70
1:A:303:ILE:HD11	1:A:383:LEU:CD2	2.23	0.68
1:A:135:GLN:HG3	1:A:139:ARG:HH12	1.57	0.68
1:A:148:ILE:HG23	1:A:149:GLY:H	1.62	0.65
1:A:135:GLN:CB	4:A:607:HOH:O	2.38	0.64
1:A:197:MET:O	1:A:200:PRO:HD2	1.98	0.64
1:A:411:MET:HE2	1:A:411:MET:HA	1.78	0.64
1:A:135:GLN:HG3	1:A:139:ARG:NH1	2.13	0.64
1:A:144:THR:HG21	1:A:148:ILE:HD12	1.79	0.63
1:A:263:GLN:O	1:A:267:GLN:HG2	1.99	0.63
1:A:50:ALA:O	1:A:54:ILE:HG22	1.99	0.63
1:A:304:THR:N	1:A:305:PRO:HD2	2.14	0.62
1:A:132:VAL:HG23	1:A:133:TYR:CD1	2.35	0.62
1:A:161:THR:O	1:A:165:ILE:HG12	2.00	0.61
1:A:39:MET:HG3	1:A:43:MET:HE3	1.81	0.61
1:A:148:ILE:HG23	1:A:149:GLY:N	2.16	0.61
1:A:200:PRO:HG3	4:A:604:HOH:O	2.02	0.59
1:A:94:SER:O	1:A:98:ARG:HG3	2.03	0.59
1:A:144:THR:CB	1:A:148:ILE:HB	2.32	0.59
1:A:56:TRP:CZ2	1:A:200:PRO:HG3	2.39	0.58
1:A:254:ARG:NH2	4:A:613:HOH:O	2.37	0.58
1:A:98:ARG:HD3	1:A:398:ALA:O	2.03	0.58
1:A:160:LEU:O	4:A:609:HOH:O	2.17	0.57
1:A:180:LYS:HD3	4:A:602:HOH:O	2.04	0.57
1:A:210:VAL:O	1:A:213:VAL:HG22	2.04	0.57
1:A:277:TYR:O	1:A:281:ILE:HG12	2.06	0.56

Continued on next page...

Continued from previous page...

Atom-1	Atom-2	Interatomic distance (Å)	Clash overlap (Å)
1:A:303:ILE:HD11	1:A:383:LEU:HD22	1.88	0.55
1:A:92:MET:CE	1:A:112:LEU:HA	2.36	0.55
1:A:339:LEU:O	1:A:343:ILE:HG13	2.07	0.55
1:A:56:TRP:CE2	1:A:200:PRO:HG3	2.40	0.55
1:A:95:LEU:HD11	1:A:255:GLU:CG	2.37	0.54
1:A:57:LEU:HD21	1:A:210:VAL:HG22	1.90	0.53
1:A:249:SER:OG	1:A:251:LYS:HG2	2.09	0.53
1:A:281:ILE:HD11	1:A:435:VAL:HG11	1.91	0.53
1:A:270:ILE:HG12	1:A:413:HIS:CE1	2.43	0.53
1:A:104:ARG:HB3	1:A:106:ASP:HB3	1.91	0.53
1:A:197:MET:C	1:A:200:PRO:HD2	2.30	0.53
1:A:75:PHE:HB3	1:A:76:PRO:HD3	1.90	0.52
1:A:124:ILE:O	1:A:128:VAL:HG23	2.09	0.52
1:A:39:MET:HG3	1:A:43:MET:CE	2.39	0.52
1:A:462:ARG:HH12	3:A:508:CAC:C1	2.23	0.52
1:A:171:MET:HE2	1:A:171:MET:HA	1.92	0.52
1:A:56:TRP:CE2	4:A:604:HOH:O	2.52	0.52
1:A:92:MET:HB3	1:A:173:GLY:HA3	1.91	0.52
1:A:39:MET:HG2	1:A:311:THR:OG1	2.10	0.52
1:A:411:MET:CA	1:A:411:MET:HE2	2.35	0.52
1:A:147:ILE:O	1:A:147:ILE:HG13	2.10	0.51
1:A:413:HIS:NE2	2:A:501:OLC:H16A	2.25	0.51
1:A:251:LYS:HG3	1:A:252:ILE:N	2.26	0.50
1:A:153:GLU:HG2	1:A:157:TYR:CE2	2.46	0.50
1:A:373:VAL:O	1:A:377:ARG:HG3	2.12	0.50
1:A:349:VAL:O	1:A:353:VAL:HG22	2.12	0.49
1:A:170:VAL:HG12	1:A:171:MET:HE3	1.93	0.49
1:A:171:MET:HA	1:A:171:MET:CE	2.43	0.49
1:A:95:LEU:HD11	1:A:255:GLU:HG3	1.95	0.48
1:A:221:GLN:OE1	2:A:504:OLC:H8A	2.13	0.48
1:A:95:LEU:HD11	1:A:255:GLU:HG2	1.95	0.48
1:A:92:MET:HE1	1:A:112:LEU:HA	1.95	0.48
1:A:180:LYS:CD	4:A:602:HOH:O	2.57	0.48
1:A:71:VAL:O	1:A:74:VAL:HG12	2.14	0.47
1:A:106:ASP:H	1:A:108:ALA:H	1.61	0.47
1:A:355:ALA:HB3	1:A:356:PRO:HD3	1.96	0.47
1:A:420:VAL:HG12	1:A:438:GLY:HA2	1.96	0.47
1:A:107:ARG:O	1:A:110:ARG:HB2	2.15	0.47
1:A:459:ARG:HD3	1:A:463:TRP:CZ2	2.50	0.47
1:A:67:ILE:HG22	1:A:150:TYR:CE2	2.49	0.47
1:A:412:ARG:HH21	1:A:413:HIS:HE1	1.63	0.46

Continued on next page...

Continued from previous page...

Atom-1	Atom-2	Interatomic distance (Å)	Clash overlap (Å)
1:A:95:LEU:HA	1:A:95:LEU:HD12	1.65	0.46
1:A:310:ALA:O	1:A:394:GLU:HG2	2.15	0.46
1:A:282:VAL:HG23	1:A:289:MET:HG2	1.97	0.46
1:A:303:ILE:HD11	1:A:383:LEU:HD21	1.95	0.46
1:A:132:VAL:HG23	1:A:133:TYR:HD1	1.76	0.46
1:A:195:ASN:ND2	4:A:606:HOH:O	2.07	0.46
1:A:428:LEU:N	1:A:428:LEU:HD22	2.31	0.46
1:A:68:ILE:HG22	1:A:68:ILE:O	2.16	0.46
2:A:501:OLC:H8A	2:A:501:OLC:H5A	1.61	0.46
1:A:383:LEU:N	1:A:384:PRO:HD2	2.31	0.46
1:A:121:PHE:O	1:A:125:VAL:HG23	2.16	0.46
1:A:56:TRP:CZ2	4:A:604:HOH:O	2.70	0.45
1:A:57:LEU:CD2	1:A:210:VAL:HG22	2.46	0.45
1:A:257:LEU:O	1:A:261:MET:HB2	2.17	0.45
1:A:107:ARG:NE	4:A:603:HOH:O	2.50	0.45
1:A:157:TYR:HB3	2:A:506:OLC:H16	1.98	0.44
1:A:282:VAL:HG12	1:A:283:ARG:N	2.32	0.44
1:A:107:ARG:CZ	4:A:603:HOH:O	2.49	0.44
1:A:68:ILE:HG12	1:A:150:TYR:CD1	2.52	0.44
1:A:369:SER:O	1:A:373:VAL:HG23	2.18	0.44
1:A:303:ILE:CG1	1:A:383:LEU:HD22	2.48	0.44
1:A:97:SER:O	1:A:319:GLN:HG2	2.17	0.44
1:A:114:VAL:HG22	1:A:253:TYR:CZ	2.52	0.43
1:A:217:SER:O	1:A:220:ALA:HB3	2.18	0.43
2:A:501:OLC:H9	2:A:501:OLC:H12	1.81	0.43
1:A:262:ALA:O	1:A:266:MET:HE2	2.19	0.43
1:A:130:GLY:O	1:A:155:TYR:OH	2.35	0.43
1:A:98:ARG:HG3	1:A:98:ARG:HH11	1.83	0.43
1:A:379:MET:CE	2:A:501:OLC:H5A	2.49	0.43
1:A:150:TYR:O	1:A:154:PHE:HD2	2.02	0.43
1:A:249:SER:O	1:A:252:ILE:HG22	2.18	0.43
1:A:148:ILE:CG2	1:A:149:GLY:H	2.30	0.42
1:A:304:THR:N	1:A:305:PRO:CD	2.80	0.42
1:A:381:LEU:O	1:A:384:PRO:HD2	2.20	0.42
1:A:378:ILE:HD13	1:A:437:PHE:CE2	2.55	0.42
1:A:95:LEU:CD1	1:A:255:GLU:HG3	2.50	0.42
1:A:33:LEU:HA	1:A:33:LEU:HD23	1.89	0.41
1:A:136:PRO:HD2	4:A:607:HOH:O	2.20	0.41
1:A:157:TYR:HB3	2:A:506:OLC:C16	2.50	0.41
1:A:388:ILE:HG22	1:A:450:ALA:HB3	2.01	0.41
1:A:462:ARG:HH12	3:A:508:CAC:AS	2.63	0.41

Continued on next page...

Continued from previous page...

Atom-1	Atom-2	Interatomic distance (Å)	Clash overlap (Å)
1:A:43:MET:HE3	1:A:308:ALA:HA	2.02	0.41
1:A:200:PRO:CG	4:A:604:HOH:O	2.65	0.41
1:A:155:TYR:O	1:A:158:SER:HB2	2.21	0.41
1:A:167:LEU:HD23	1:A:167:LEU:HA	1.84	0.41
1:A:96:LEU:HD22	1:A:174:LEU:HD12	2.03	0.41
1:A:68:ILE:HG23	1:A:154:PHE:HE2	1.87	0.40

There are no symmetry-related clashes.

5.3 Torsion angles [i](#)

5.3.1 Protein backbone [i](#)

In the following table, the Percentiles column shows the percent Ramachandran outliers of the chain as a percentile score with respect to all X-ray entries followed by that with respect to entries of similar resolution.

The Analysed column shows the number of residues for which the backbone conformation was analysed, and the total number of residues.

Mol	Chain	Analysed	Favoured	Allowed	Outliers	Percentiles
1	A	425/499 (85%)	411 (97%)	12 (3%)	2 (0%)	29 54

All (2) Ramachandran outliers are listed below:

Mol	Chain	Res	Type
1	A	20	VAL
1	A	427	VAL

5.3.2 Protein sidechains [i](#)

In the following table, the Percentiles column shows the percent sidechain outliers of the chain as a percentile score with respect to all X-ray entries followed by that with respect to entries of similar resolution.

The Analysed column shows the number of residues for which the sidechain conformation was analysed, and the total number of residues.

Mol	Chain	Analysed	Rotameric	Outliers	Percentiles
1	A	348/408 (85%)	344 (99%)	4 (1%)	73 90

All (4) residues with a non-rotameric sidechain are listed below:

Mol	Chain	Res	Type
1	A	74	VAL
1	A	109	GLN
1	A	122	PHE
1	A	164	SER

Sometimes sidechains can be flipped to improve hydrogen bonding and reduce clashes. There are no such sidechains identified.

5.3.3 RNA [i](#)

There are no RNA molecules in this entry.

5.4 Non-standard residues in protein, DNA, RNA chains [i](#)

There are no non-standard protein/DNA/RNA residues in this entry.

5.5 Carbohydrates [i](#)

There are no monosaccharides in this entry.

5.6 Ligand geometry [i](#)

8 ligands are modelled in this entry.

In the following table, the Counts columns list the number of bonds (or angles) for which Mogul statistics could be retrieved, the number of bonds (or angles) that are observed in the model and the number of bonds (or angles) that are defined in the Chemical Component Dictionary. The Link column lists molecule types, if any, to which the group is linked. The Z score for a bond length (or angle) is the number of standard deviations the observed value is removed from the expected value. A bond length (or angle) with $|Z| > 2$ is considered an outlier worth inspection. RMSZ is the root-mean-square of all Z scores of the bond lengths (or angles).

Mol	Type	Chain	Res	Link	Bond lengths			Bond angles		
					Counts	RMSZ	$\# Z > 2$	Counts	RMSZ	$\# Z > 2$
2	OLC	A	502	-	8,8,24	0.19	0	7,7,25	0.68	0
2	OLC	A	505	-	12,12,24	0.30	0	11,11,25	0.62	0
2	OLC	A	506	-	5,5,24	0.27	0	4,4,25	0.33	0
2	OLC	A	503	-	8,8,24	0.20	0	7,7,25	0.58	0
2	OLC	A	507	-	7,7,24	0.16	0	6,6,25	0.68	0
2	OLC	A	504	-	5,5,24	0.20	0	4,4,25	0.47	0

Mol	Type	Chain	Res	Link	Bond lengths			Bond angles		
					Counts	RMSZ	# Z > 2	Counts	RMSZ	# Z > 2
3	CAC	A	508	-	0,4,4	0.00	-	0,6,6	0.00	-
2	OLC	A	501	-	24,24,24	0.64	1 (4%)	25,25,25	0.90	2 (8%)

In the following table, the Chirals column lists the number of chiral outliers, the number of chiral centers analysed, the number of these observed in the model and the number defined in the Chemical Component Dictionary. Similar counts are reported in the Torsion and Rings columns. '-' means no outliers of that kind were identified.

Mol	Type	Chain	Res	Link	Chirals	Torsions	Rings
2	OLC	A	502	-	-	3/6/6/24	-
2	OLC	A	505	-	-	7/10/10/24	-
2	OLC	A	506	-	-	1/3/3/24	-
2	OLC	A	503	-	-	2/6/6/24	-
2	OLC	A	507	-	-	3/5/5/24	-
2	OLC	A	504	-	-	3/3/3/24	-
2	OLC	A	501	-	-	15/24/24/24	-

All (1) bond length outliers are listed below:

Mol	Chain	Res	Type	Atoms	Z	Observed(Å)	Ideal(Å)
2	A	501	OLC	O20-C1	2.51	1.40	1.33

All (2) bond angle outliers are listed below:

Mol	Chain	Res	Type	Atoms	Z	Observed(°)	Ideal(°)
2	A	501	OLC	O20-C1-C2	2.64	120.18	111.91
2	A	501	OLC	O20-C1-O19	-2.28	117.83	123.59

There are no chirality outliers.

All (34) torsion outliers are listed below:

Mol	Chain	Res	Type	Atoms
2	A	505	OLC	C11-C10-C9-C8
2	A	501	OLC	C21-C22-C24-O25
2	A	505	OLC	C13-C14-C15-C16
2	A	507	OLC	C12-C13-C14-C15
2	A	505	OLC	C6-C7-C8-C9
2	A	501	OLC	C11-C10-C9-C8
2	A	501	OLC	C12-C13-C14-C15
2	A	503	OLC	C3-C4-C5-C6

Continued on next page...

Continued from previous page...

Mol	Chain	Res	Type	Atoms
2	A	507	OLC	C13-C14-C15-C16
2	A	504	OLC	C5-C6-C7-C8
2	A	505	OLC	C14-C15-C16-C17
2	A	507	OLC	C14-C15-C16-C17
2	A	501	OLC	O23-C22-C24-O25
2	A	501	OLC	C10-C11-C12-C13
2	A	501	OLC	C14-C15-C16-C17
2	A	506	OLC	C13-C14-C15-C16
2	A	501	OLC	C1-C2-C3-C4
2	A	505	OLC	C12-C13-C14-C15
2	A	504	OLC	C4-C5-C6-C7
2	A	501	OLC	C5-C6-C7-C8
2	A	501	OLC	C13-C14-C15-C16
2	A	502	OLC	C1-C2-C3-C4
2	A	505	OLC	C10-C11-C12-C13
2	A	501	OLC	C3-C4-C5-C6
2	A	502	OLC	C6-C7-C8-C9
2	A	503	OLC	C1-C2-C3-C4
2	A	501	OLC	C11-C12-C13-C14
2	A	501	OLC	C7-C8-C9-C10
2	A	502	OLC	C2-C3-C4-C5
2	A	504	OLC	C6-C7-C8-C9
2	A	501	OLC	O20-C21-C22-C24
2	A	501	OLC	O20-C21-C22-O23
2	A	505	OLC	C7-C8-C9-C10
2	A	501	OLC	C9-C10-C11-C12

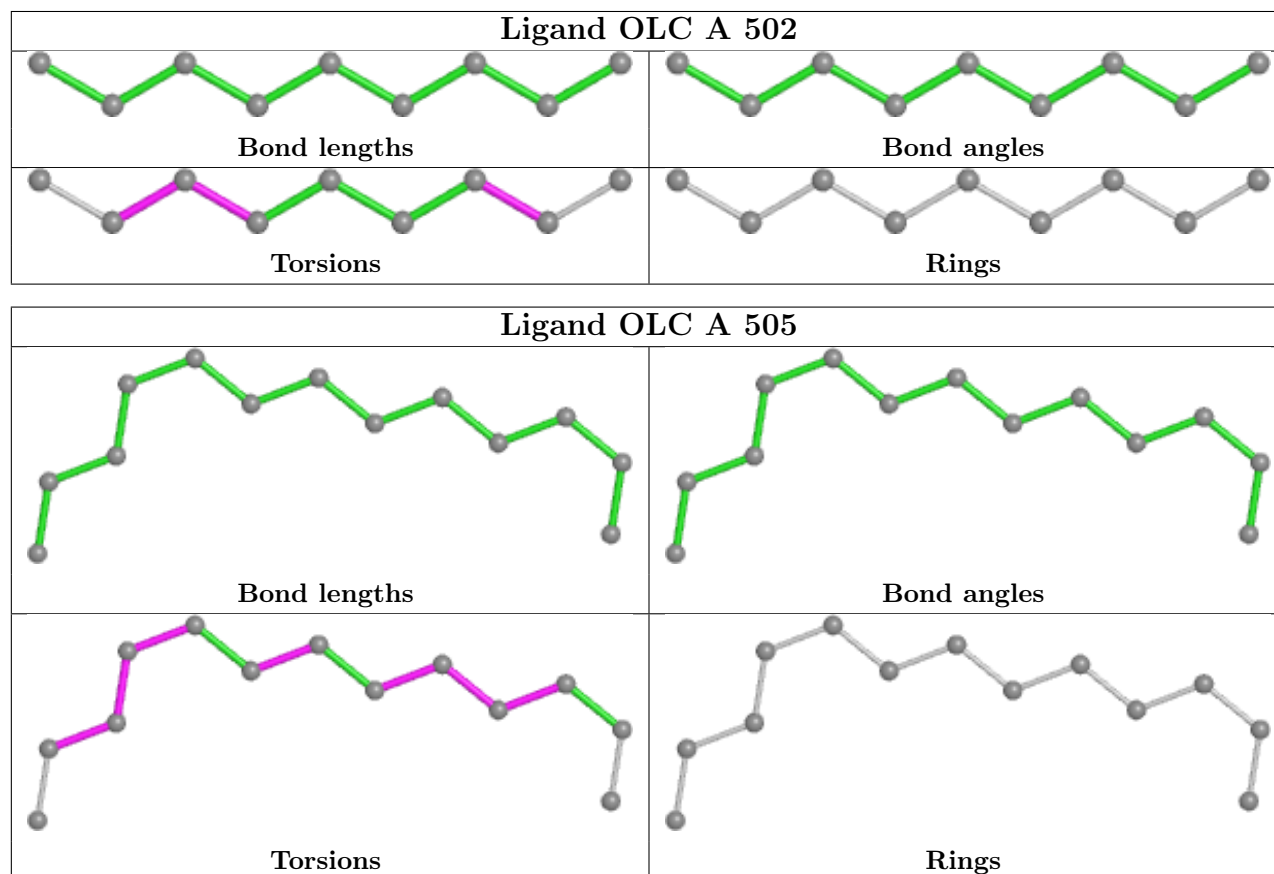
There are no ring outliers.

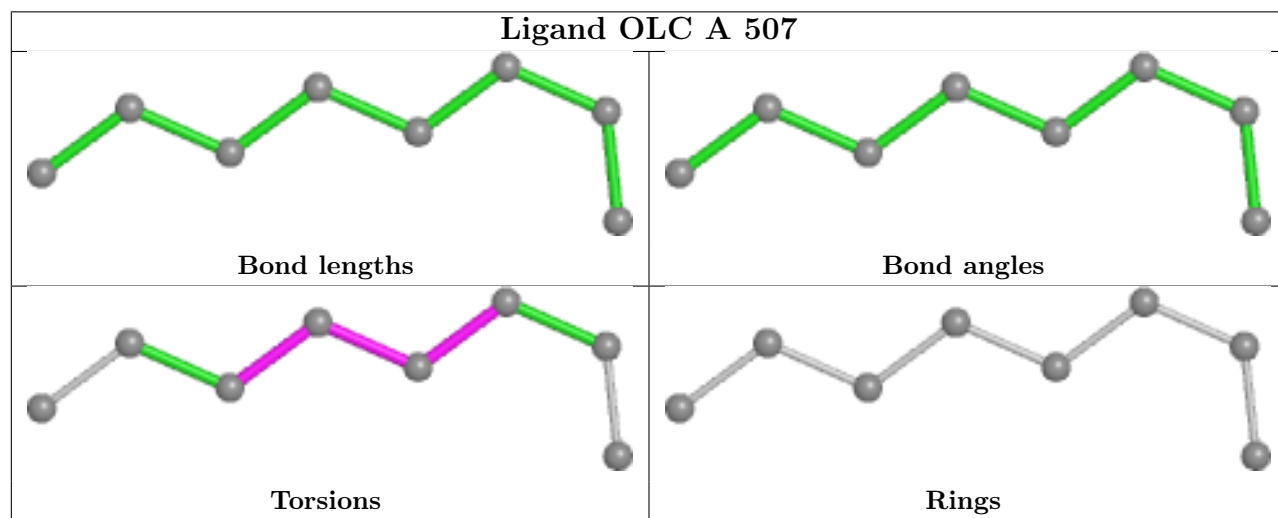
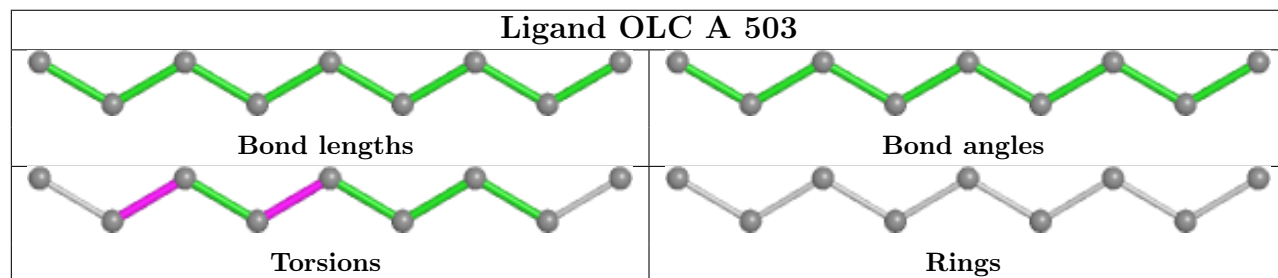
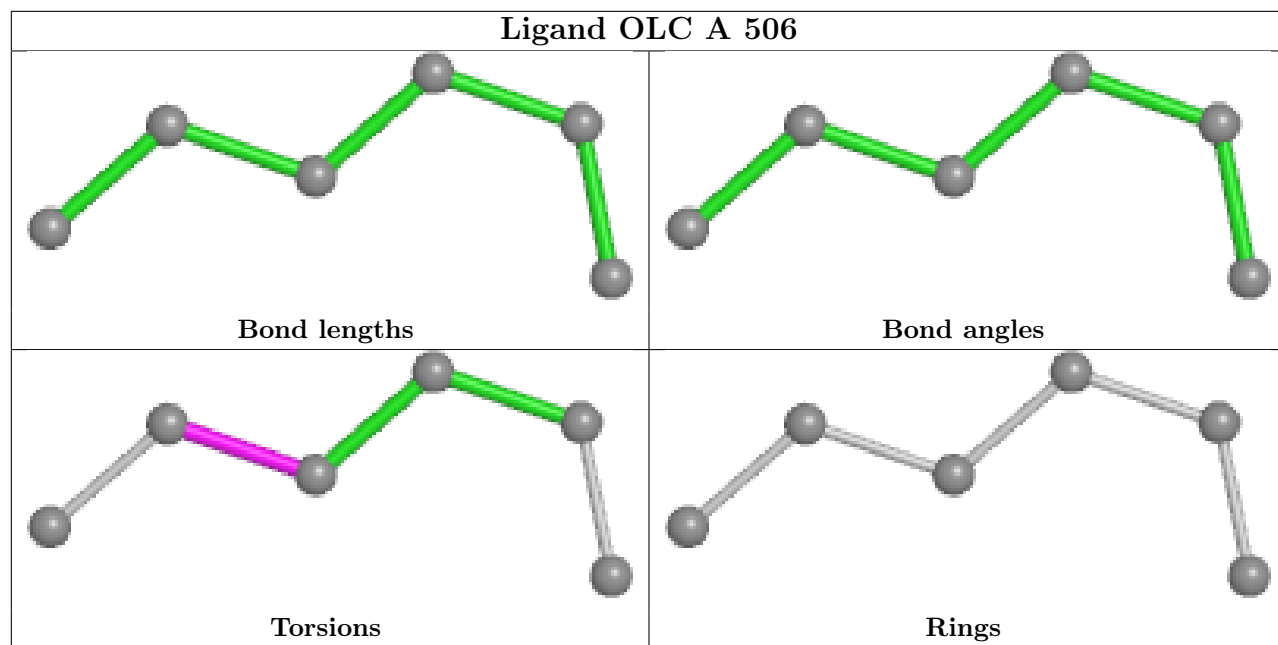
5 monomers are involved in 10 short contacts:

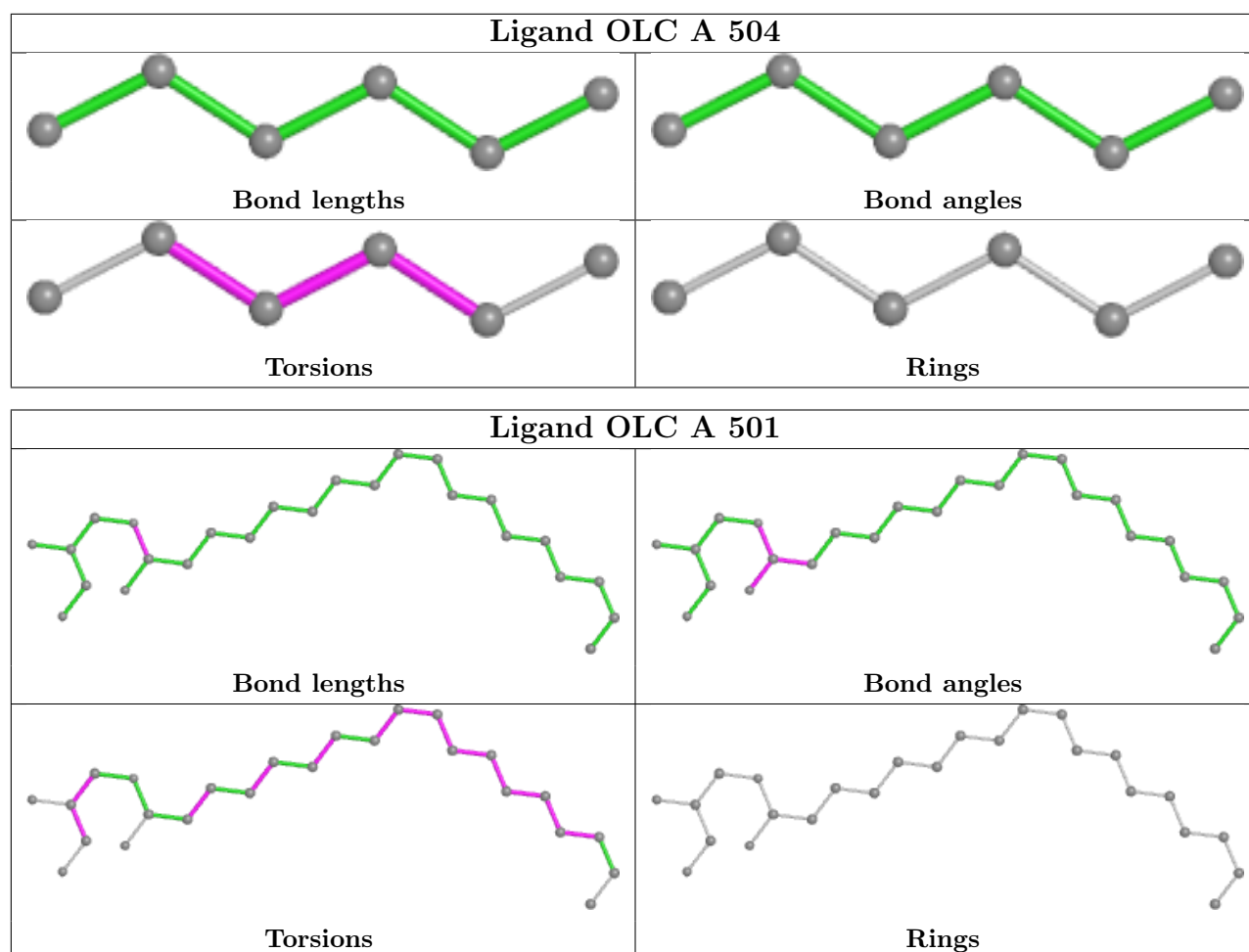
Mol	Chain	Res	Type	Clashes	Symm-Clashes
2	A	506	OLC	2	0
2	A	503	OLC	1	0
2	A	504	OLC	1	0
3	A	508	CAC	2	0
2	A	501	OLC	4	0

The following is a two-dimensional graphical depiction of Mogul quality analysis of bond lengths, bond angles, torsion angles, and ring geometry for all instances of the Ligand of Interest. In addition, ligands with molecular weight > 250 and outliers as shown on the validation Tables will also be included. For torsion angles, if less than 5% of the Mogul distribution of torsion angles is within 10 degrees of the torsion angle in question, then that torsion angle is considered an outlier.

Any bond that is central to one or more torsion angles identified as an outlier by Mogul will be highlighted in the graph. For rings, the root-mean-square deviation (RMSD) between the ring in question and similar rings identified by Mogul is calculated over all ring torsion angles. If the average RMSD is greater than 60 degrees and the minimal RMSD between the ring in question and any Mogul-identified rings is also greater than 60 degrees, then that ring is considered an outlier. The outliers are highlighted in purple. The color gray indicates Mogul did not find sufficient equivalents in the CSD to analyse the geometry.







5.7 Other polymers [i](#)

There are no such residues in this entry.

5.8 Polymer linkage issues [i](#)

There are no chain breaks in this entry.

6 Fit of model and data ⓘ

6.1 Protein, DNA and RNA chains ⓘ

In the following table, the column labelled ‘#RSRZ> 2’ contains the number (and percentage) of RSRZ outliers, followed by percent RSRZ outliers for the chain as percentile scores relative to all X-ray entries and entries of similar resolution. The OWAB column contains the minimum, median, 95th percentile and maximum values of the occupancy-weighted average B-factor per residue. The column labelled ‘Q< 0.9’ lists the number of (and percentage) of residues with an average occupancy less than 0.9.

Mol	Chain	Analysed	<RSRZ>	#RSRZ>2	OWAB(Å ²)	Q<0.9
1	A	431/499 (86%)	0.01	18 (4%) 36 35	24, 38, 73, 110	0

All (18) RSRZ outliers are listed below:

Mol	Chain	Res	Type	RSRZ
1	A	58	SER	4.8
1	A	19	THR	4.5
1	A	147	ILE	4.4
1	A	105	LEU	3.9
1	A	146	SER	3.9
1	A	143	ALA	3.7
1	A	145	LYS	3.5
1	A	144	THR	3.4
1	A	150	TYR	2.9
1	A	68	ILE	2.8
1	A	25	ASP	2.7
1	A	57	LEU	2.6
1	A	18	PHE	2.5
1	A	66	GLY	2.2
1	A	76	PRO	2.1
1	A	59	HIS	2.1
1	A	103	GLN	2.1
1	A	135	GLN	2.1

6.2 Non-standard residues in protein, DNA, RNA chains ⓘ

There are no non-standard protein/DNA/RNA residues in this entry.

6.3 Carbohydrates

There are no monosaccharides in this entry.

6.4 Ligands

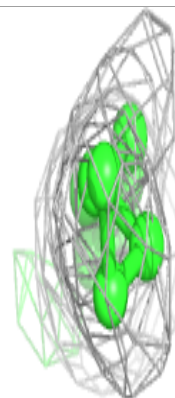
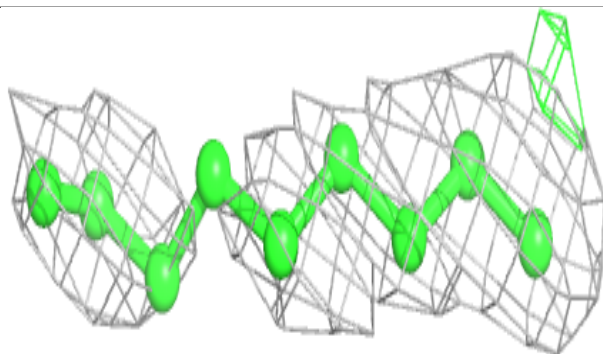
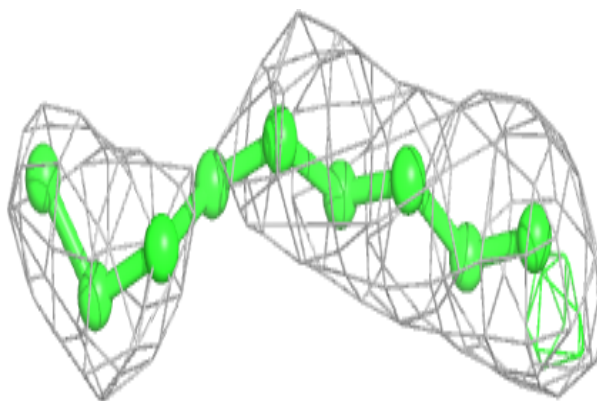
In the following table, the Atoms column lists the number of modelled atoms in the group and the number defined in the chemical component dictionary. The B-factors column lists the minimum, median, 95th percentile and maximum values of B factors of atoms in the group. The column labelled 'Q< 0.9' lists the number of atoms with occupancy less than 0.9.

Mol	Type	Chain	Res	Atoms	RSCC	RSR	B-factors(\AA^2)	Q<0.9
2	OLC	A	503	9/25	0.72	0.27	36,45,53,55	0
2	OLC	A	505	13/25	0.84	0.21	34,40,50,52	0
2	OLC	A	502	9/25	0.84	0.20	38,40,46,47	0
2	OLC	A	504	6/25	0.85	0.28	44,45,49,55	0
2	OLC	A	506	6/25	0.86	0.30	31,36,38,40	0
2	OLC	A	501	25/25	0.86	0.20	31,44,53,60	0
2	OLC	A	507	8/25	0.88	0.26	26,38,41,47	0
3	CAC	A	508	5/5	0.95	0.17	49,62,93,93	0

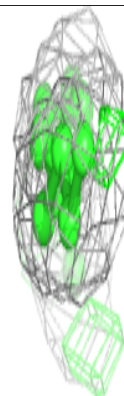
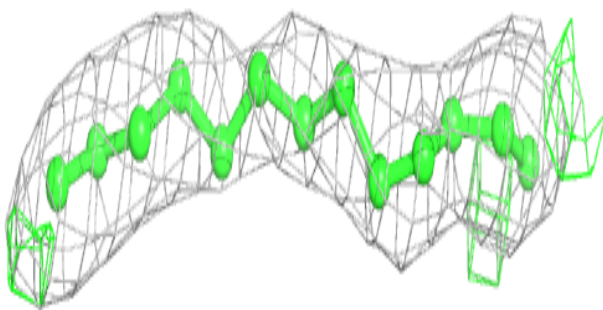
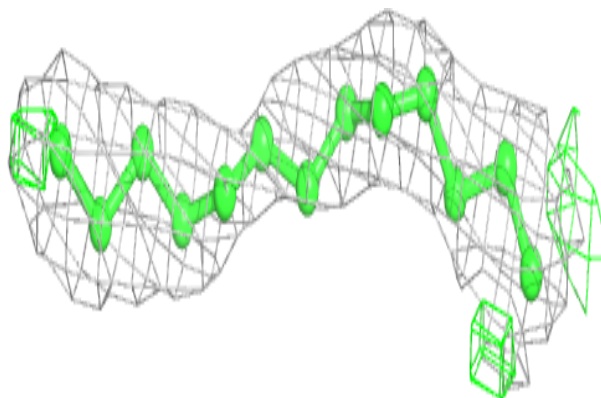
The following is a graphical depiction of the model fit to experimental electron density of all instances of the Ligand of Interest. In addition, ligands with molecular weight > 250 and outliers as shown on the geometry validation Tables will also be included. Each fit is shown from different orientation to approximate a three-dimensional view.

Electron density around OLC A 503:

$2mF_o-DF_c$ (at 0.7 rmsd) in gray
 mF_o-DF_c (at 3 rmsd) in purple (negative)
and green (positive)

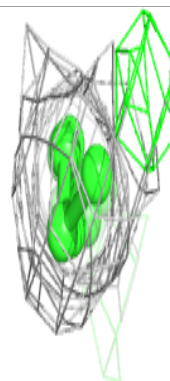
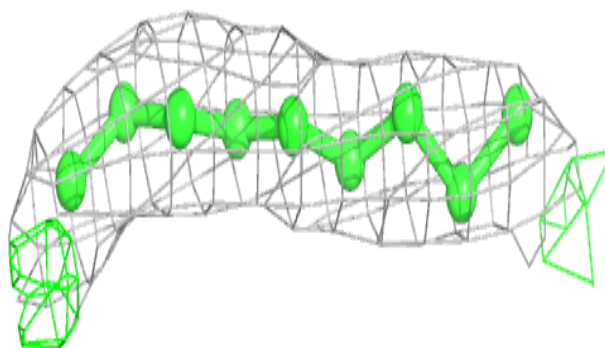
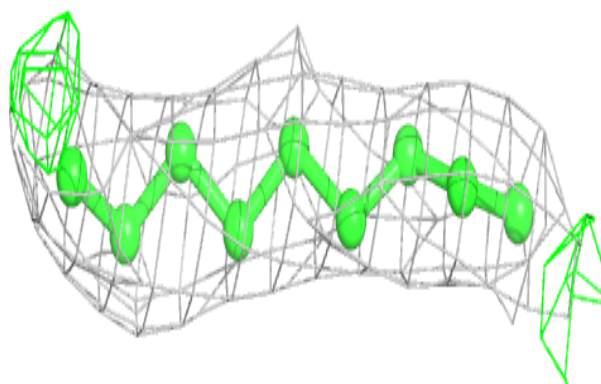
**Electron density around OLC A 505:**

$2mF_o-DF_c$ (at 0.7 rmsd) in gray
 mF_o-DF_c (at 3 rmsd) in purple (negative)
and green (positive)

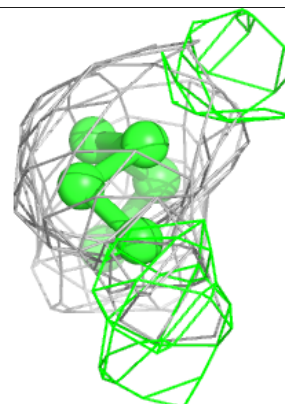
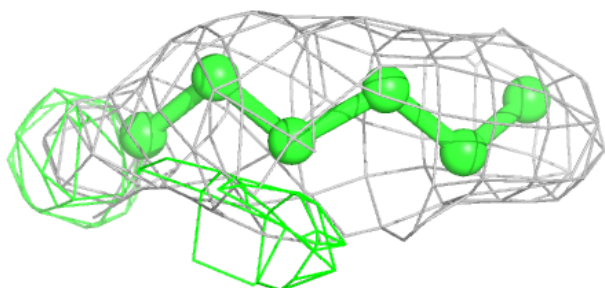
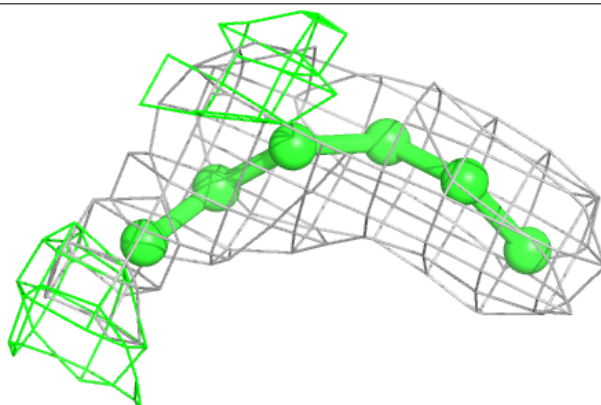


Electron density around OLC A 502:

$2mF_o-DF_c$ (at 0.7 rmsd) in gray
 mF_o-DF_c (at 3 rmsd) in purple (negative)
and green (positive)

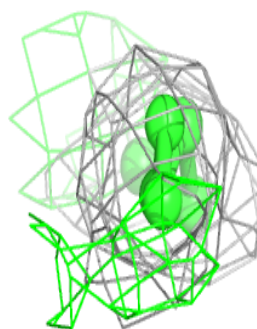
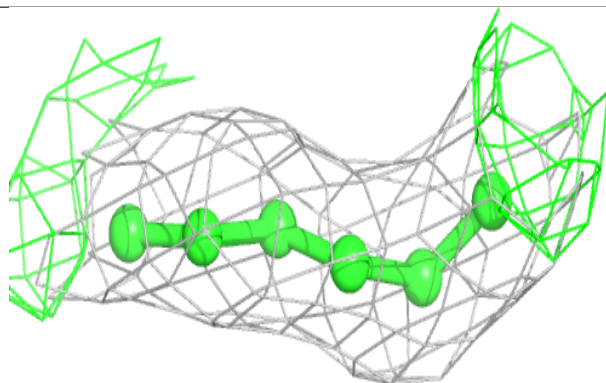
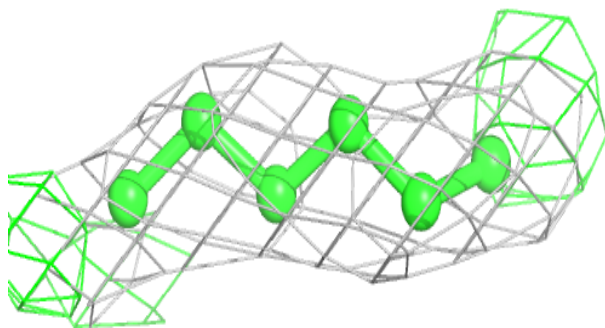
**Electron density around OLC A 504:**

$2mF_o-DF_c$ (at 0.7 rmsd) in gray
 mF_o-DF_c (at 3 rmsd) in purple (negative)
and green (positive)



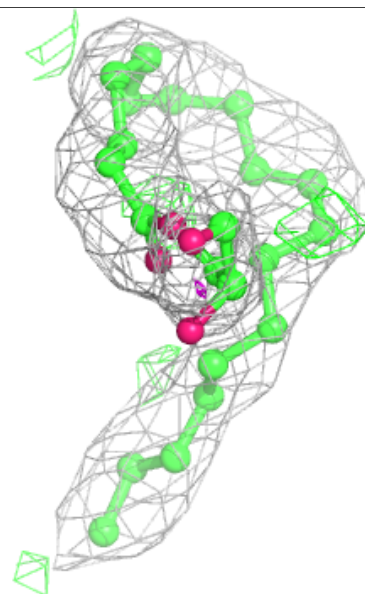
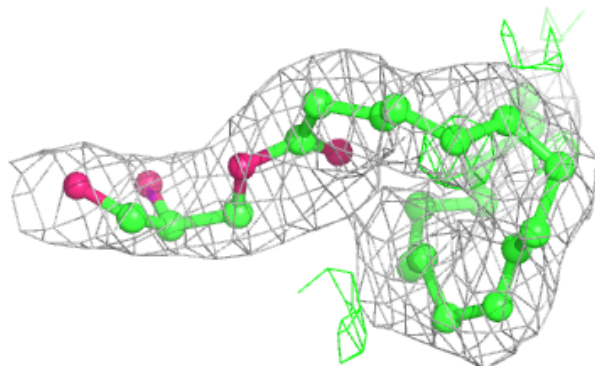
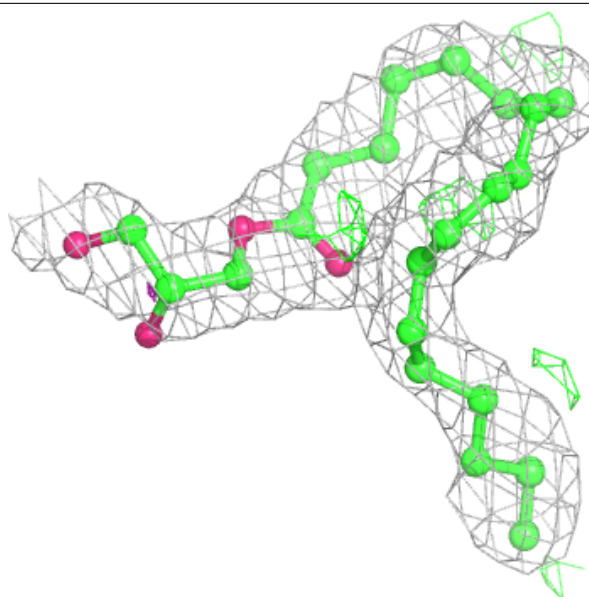
Electron density around OLC A 506:

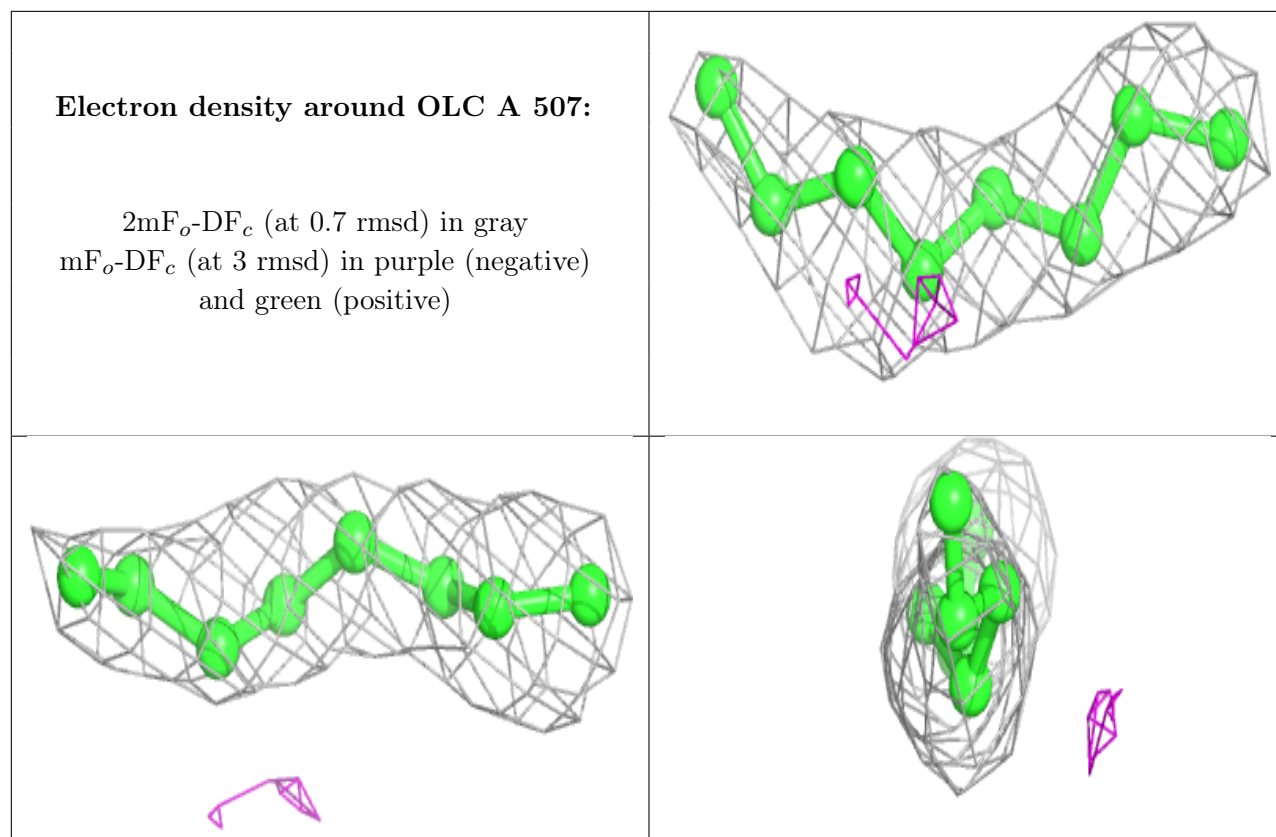
$2mF_o-DF_c$ (at 0.7 rmsd) in gray
 mF_o-DF_c (at 3 rmsd) in purple (negative)
and green (positive)



Electron density around OLC A 501:

$2mF_o-DF_c$ (at 0.7 rmsd) in gray
 mF_o-DF_c (at 3 rmsd) in purple (negative)
and green (positive)





6.5 Other polymers [i](#)

There are no such residues in this entry.