



Full wwPDB X-ray Structure Validation Report ⓘ

Aug 9, 2020 – 08:29 AM BST

PDB ID : 2Z49
Title : Crystal Structure of Hemolytic Lectin CEL-III Complexed with methyl-alpha-D-galactopyranoside
Authors : Hatakeyama, T.; Unno, H.; Eto, S.; Hidemura, H.; Uchida, T.; Kouzuma, Y.
Deposited on : 2007-06-13
Resolution : 1.95 Å(reported)

This is a Full wwPDB X-ray Structure Validation Report for a publicly released PDB entry.

We welcome your comments at validation@mail.wwpdb.org

A user guide is available at

<https://www.wwpdb.org/validation/2017/XrayValidationReportHelp>

with specific help available everywhere you see the ⓘ symbol.

The following versions of software and data (see [references ⓘ](#)) were used in the production of this report:

MolProbity : 4.02b-467
Mogul : 1.8.5 (274361), CSD as541be (2020)
Xtriage (Phenix) : 1.13
EDS : 2.13.1
Percentile statistics : 20191225.v01 (using entries in the PDB archive December 25th 2019)
Refmac : 5.8.0158
CCP4 : 7.0.044 (Gargrove)
Ideal geometry (proteins) : Engh & Huber (2001)
Ideal geometry (DNA, RNA) : Parkinson et al. (1996)
Validation Pipeline (wwPDB-VP) : 2.13.1

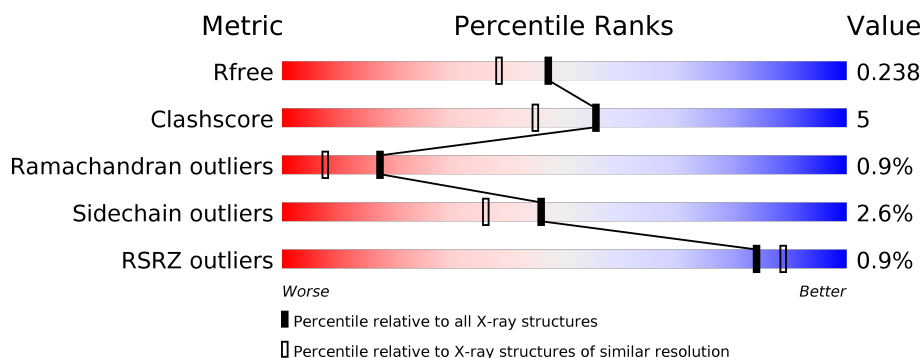
1 Overall quality at a glance ⓘ

The following experimental techniques were used to determine the structure:

X-RAY DIFFRACTION

The reported resolution of this entry is 1.95 Å.

Percentile scores (ranging between 0-100) for global validation metrics of the entry are shown in the following graphic. The table shows the number of entries on which the scores are based.



Metric	Whole archive (#Entries)	Similar resolution (#Entries, resolution range(Å))
R_{free}	130704	2580 (1.96-1.96)
Clashscore	141614	2705 (1.96-1.96)
Ramachandran outliers	138981	2678 (1.96-1.96)
Sidechain outliers	138945	2678 (1.96-1.96)
RSRZ outliers	127900	2539 (1.96-1.96)

The table below summarises the geometric issues observed across the polymeric chains and their fit to the electron density. The red, orange, yellow and green segments on the lower bar indicate the fraction of residues that contain outliers for ≥ 3 , 2, 1 and 0 types of geometric quality criteria respectively. A grey segment represents the fraction of residues that are not modelled. The numeric value for each fraction is indicated below the corresponding segment, with a dot representing fractions $\leq 5\%$. The upper red bar (where present) indicates the fraction of residues that have poor fit to the electron density. The numeric value is given above the bar.

Mol	Chain	Length	Quality of chain
1	A	432	<div> <div></div> <div>89%</div> <div>10%</div> <div>.</div> </div>
1	B	432	<div> <div>%</div> <div>85%</div> <div>14%</div> <div>.</div> </div>

2 Entry composition

There are 5 unique types of molecules in this entry. The entry contains 7502 atoms, of which 0 are hydrogens and 0 are deuteriums.

In the tables below, the ZeroOcc column contains the number of atoms modelled with zero occupancy, the AltConf column contains the number of residues with at least one atom in alternate conformation and the Trace column contains the number of residues modelled with at most 2 atoms.

- Molecule 1 is a protein called Hemolytic lectin CEL-III.

Mol	Chain	Residues	Atoms					ZeroOcc	AltConf	Trace
1	A	432	Total	C	N	O	S	0	0	0
			3313	2033	562	688	30			
1	B	431	Total	C	N	O	S	0	0	0
			3305	2028	561	686	30			

There are 26 discrepancies between the modelled and reference sequences:

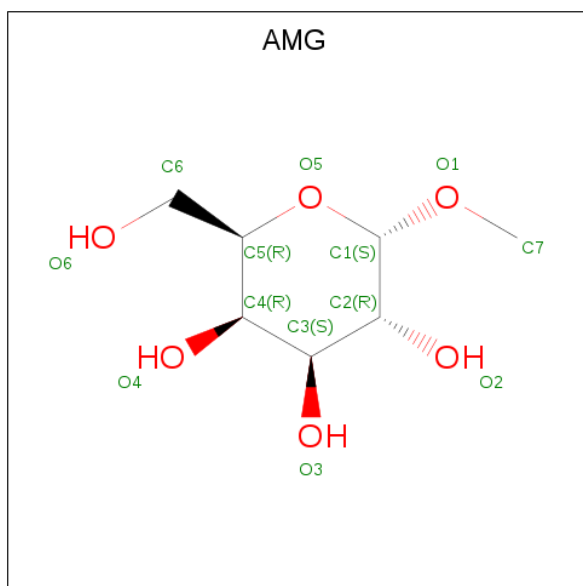
Chain	Residue	Modelled	Actual	Comment	Reference
A	15	SER	ASN	SEE REMARK 999	UNP Q868M7
A	16	PHE	TYR	SEE REMARK 999	UNP Q868M7
A	36	TYR	HIS	SEE REMARK 999	UNP Q868M7
A	48	ILE	MET	SEE REMARK 999	UNP Q868M7
A	92	GLN	LEU	SEE REMARK 999	UNP Q868M7
A	95	ARG	LYS	SEE REMARK 999	UNP Q868M7
A	97	THR	ALA	SEE REMARK 999	UNP Q868M7
A	122	ILE	VAL	SEE REMARK 999	UNP Q868M7
A	146	VAL	ILE	SEE REMARK 999	UNP Q868M7
A	173	ASP	GLU	SEE REMARK 999	UNP Q868M7
A	204	SER	GLN	SEE REMARK 999	UNP Q868M7
A	340	THR	SER	SEE REMARK 999	UNP Q868M7
A	404	VAL	ILE	SEE REMARK 999	UNP Q868M7
B	15	SER	ASN	SEE REMARK 999	UNP Q868M7
B	16	PHE	TYR	SEE REMARK 999	UNP Q868M7
B	36	TYR	HIS	SEE REMARK 999	UNP Q868M7
B	48	ILE	MET	SEE REMARK 999	UNP Q868M7
B	92	GLN	LEU	SEE REMARK 999	UNP Q868M7
B	95	ARG	LYS	SEE REMARK 999	UNP Q868M7
B	97	THR	ALA	SEE REMARK 999	UNP Q868M7
B	122	ILE	VAL	SEE REMARK 999	UNP Q868M7
B	146	VAL	ILE	SEE REMARK 999	UNP Q868M7
B	173	ASP	GLU	SEE REMARK 999	UNP Q868M7
B	204	SER	GLN	SEE REMARK 999	UNP Q868M7
B	340	THR	SER	SEE REMARK 999	UNP Q868M7

Continued on next page...

Continued from previous page...

Chain	Residue	Modelled	Actual	Comment	Reference
B	404	VAL	ILE	SEE REMARK 999	UNP Q868M7

- Molecule 2 is methyl alpha-D-galactopyranoside (three-letter code: AMG) (formula: $C_7H_{14}O_6$).



Mol	Chain	Residues	Atoms			ZeroOcc	AltConf
2	A	1	Total	C	O	0	0
			13	7	6		
2	A	1	Total	C	O	0	0
			13	7	6		
2	A	1	Total	C	O	0	0
			13	7	6		
2	A	1	Total	C	O	0	0
			13	7	6		
2	B	1	Total	C	O	0	0
			13	7	6		
2	B	1	Total	C	O	0	0
			13	7	6		
2	B	1	Total	C	O	0	0
			13	7	6		
2	B	1	Total	C	O	0	0
			13	7	6		

- Molecule 3 is CALCIUM ION (three-letter code: CA) (formula: Ca).

Mol	Chain	Residues	Atoms		ZeroOcc	AltConf
3	B	5	Total 5	Ca 5	0	0
3	A	5	Total 5	Ca 5	0	0

- Molecule 4 is MAGNESIUM ION (three-letter code: MG) (formula: Mg).

Mol	Chain	Residues	Atoms		ZeroOcc	AltConf
4	B	2	Total 2	Mg 2	0	0
4	A	2	Total 2	Mg 2	0	0

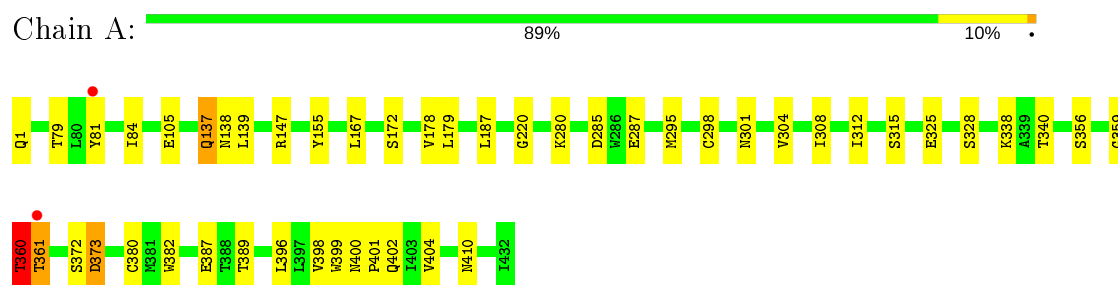
- Molecule 5 is water.

Mol	Chain	Residues	Atoms		ZeroOcc	AltConf
5	A	443	Total 443	O 443	0	0
5	B	297	Total 297	O 297	0	0

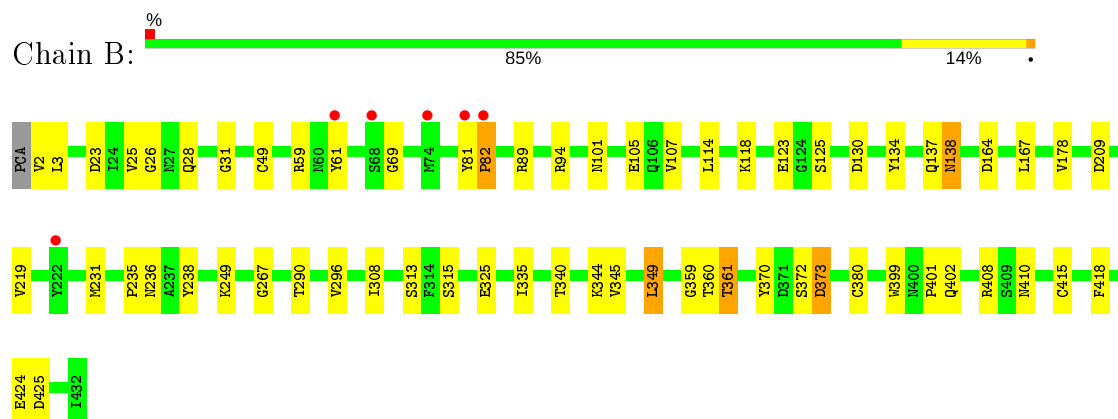
3 Residue-property plots

These plots are drawn for all protein, RNA, DNA and oligosaccharide chains in the entry. The first graphic for a chain summarises the proportions of the various outlier classes displayed in the second graphic. The second graphic shows the sequence view annotated by issues in geometry and electron density. Residues are color-coded according to the number of geometric quality criteria for which they contain at least one outlier: green = 0, yellow = 1, orange = 2 and red = 3 or more. A red dot above a residue indicates a poor fit to the electron density ($RSRZ > 2$). Stretches of 2 or more consecutive residues without any outlier are shown as a green connector. Residues present in the sample, but not in the model, are shown in grey.

- Molecule 1: Hemolytic lectin CEL-III



- Molecule 1: Hemolytic lectin CEL-III



4 Data and refinement statistics

Property	Value	Source
Space group	P 1 21 1	Depositor
Cell constants a, b, c, α , β , γ	53.29 Å 65.45 Å 126.99 Å 90.00° 97.07° 90.00°	Depositor
Resolution (Å)	58.12 – 1.95 58.08 – 1.95	Depositor EDS
% Data completeness (in resolution range)	100.0 (58.12-1.95) 100.0 (58.08-1.95)	Depositor EDS
R_{merge}	0.08	Depositor
R_{sym}	(Not available)	Depositor
$\langle I/\sigma(I) \rangle$ ¹	2.89 (at 1.95 Å)	Xtriage
Refinement program	REFMAC 5.2.0005	Depositor
R, R_{free}	0.191 , 0.239 0.191 , 0.238	Depositor DCC
R_{free} test set	3221 reflections (5.07%)	wwPDB-VP
Wilson B-factor (Å ²)	25.6	Xtriage
Anisotropy	0.059	Xtriage
Bulk solvent k_{sol} (e/Å ³), B_{sol} (Å ²)	0.36 , 44.9	EDS
L-test for twinning ²	$\langle L \rangle = 0.47$, $\langle L^2 \rangle = 0.30$	Xtriage
Estimated twinning fraction	No twinning to report.	Xtriage
F_o, F_c correlation	0.95	EDS
Total number of atoms	7502	wwPDB-VP
Average B, all atoms (Å ²)	29.0	wwPDB-VP

Xtriage's analysis on translational NCS is as follows: *The analyses of the Patterson function reveals a significant off-origin peak that is 27.96 % of the origin peak, indicating pseudo-translational symmetry. The chance of finding a peak of this or larger height randomly in a structure without pseudo-translational symmetry is equal to 2.0052e-03. The detected translational NCS is most likely also responsible for the elevated intensity ratio.*

¹ Intensities estimated from amplitudes.

² Theoretical values of $\langle |L| \rangle$, $\langle L^2 \rangle$ for acentric reflections are 0.5, 0.333 respectively for untwinned datasets, and 0.375, 0.2 for perfectly twinned datasets.

5 Model quality [i](#)

5.1 Standard geometry [i](#)

Bond lengths and bond angles in the following residue types are not validated in this section: CA, PCA, MG, AMG

The Z score for a bond length (or angle) is the number of standard deviations the observed value is removed from the expected value. A bond length (or angle) with $|Z| > 5$ is considered an outlier worth inspection. RMSZ is the root-mean-square of all Z scores of the bond lengths (or angles).

Mol	Chain	Bond lengths		Bond angles	
		RMSZ	$\# Z > 5$	RMSZ	$\# Z > 5$
1	A	0.60	0/3366	0.66	0/4566
1	B	0.52	1/3365 (0.0%)	0.63	1/4563 (0.0%)
All	All	0.56	1/6731 (0.0%)	0.64	1/9129 (0.0%)

All (1) bond length outliers are listed below:

Mol	Chain	Res	Type	Atoms	Z	Observed(Å)	Ideal(Å)
1	B	415	CYS	CB-SG	-5.26	1.73	1.81

All (1) bond angle outliers are listed below:

Mol	Chain	Res	Type	Atoms	Z	Observed(°)	Ideal(°)
1	B	3	LEU	CA-CB-CG	5.01	126.83	115.30

There are no chirality outliers.

There are no planarity outliers.

5.2 Too-close contacts [i](#)

In the following table, the Non-H and H(model) columns list the number of non-hydrogen atoms and hydrogen atoms in the chain respectively. The H(added) column lists the number of hydrogen atoms added and optimized by MolProbity. The Clashes column lists the number of clashes within the asymmetric unit, whereas Symm-Clashes lists symmetry related clashes.

Mol	Chain	Non-H	H(model)	H(added)	Clashes	Symm-Clashes
1	A	3313	0	3082	29	0
1	B	3305	0	3075	41	1
2	A	65	0	60	0	0
2	B	65	0	62	3	0

Continued on next page...

Continued from previous page...

Mol	Chain	Non-H	H(model)	H(added)	Clashes	Symm-Clashes
3	A	5	0	0	0	0
3	B	5	0	0	0	0
4	A	2	0	0	0	0
4	B	2	0	0	0	0
5	A	443	0	0	9	0
5	B	297	0	0	9	0
All	All	7502	0	6279	67	1

The all-atom clashscore is defined as the number of clashes found per 1000 atoms (including hydrogen atoms). The all-atom clashscore for this structure is 5.

All (67) close contacts within the same asymmetric unit are listed below, sorted by their clash magnitude.

Atom-1	Atom-2	Interatomic distance (Å)	Clash overlap (Å)
1:B:325:GLU:HG3	5:B:2264:HOH:O	1.37	1.24
1:A:361:THR:HA	5:A:2011:HOH:O	1.40	1.19
1:B:49:CYS:HB2	5:B:2033:HOH:O	1.46	1.14
1:A:361:THR:HB	5:A:2274:HOH:O	1.56	1.05
1:A:360:THR:HA	1:A:361:THR:OG1	1.63	0.96
1:B:105:GLU:HG3	5:B:2213:HOH:O	1.66	0.94
1:A:287:GLU:HG3	1:A:389:THR:HB	1.62	0.81
1:B:94:ARG:NH2	1:B:138:ASN:HB3	2.02	0.74
1:A:340:THR:HG22	5:A:2348:HOH:O	1.89	0.73
1:A:360:THR:HA	1:A:361:THR:CB	2.22	0.70
1:B:28:GLN:O	1:B:59:ARG:HB2	1.95	0.65
1:B:125:SER:HB3	5:B:2239:HOH:O	1.99	0.62
1:A:356:SER:HB3	5:A:2315:HOH:O	1.99	0.62
1:A:312:ILE:HD11	5:A:2315:HOH:O	2.00	0.61
1:B:26:GLY:O	2:B:1405:AMG:H2	2.01	0.61
1:A:387:GLU:HG3	1:A:398:VAL:HG22	1.82	0.60
1:B:399:TRP:CZ2	1:B:401:PRO:HB3	2.38	0.58
1:A:372:SER:O	1:A:373:ASP:HB2	2.05	0.56
1:A:399:TRP:CZ2	1:A:401:PRO:HB3	2.41	0.55
1:B:349:LEU:HD23	1:B:418:PHE:HE1	1.72	0.54
1:A:387:GLU:HG2	1:A:396:LEU:HD11	1.91	0.53
1:B:94:ARG:HH22	1:B:138:ASN:HB3	1.72	0.53
1:B:308:ILE:HG22	1:B:402:GLN:HG2	1.90	0.53
1:B:340:THR:HG22	5:B:2193:HOH:O	2.10	0.51
1:B:372:SER:O	1:B:373:ASP:HB2	2.11	0.50
1:A:308:ILE:HG22	1:A:402:GLN:HG2	1.94	0.50
1:A:380:CYS:SG	1:A:410:ASN:ND2	2.84	0.50

Continued on next page...

Continued from previous page...

Atom-1	Atom-2	Interatomic distance (Å)	Clash overlap (Å)
1:B:81:TYR:HA	1:B:82:PRO:C	2.32	0.49
1:A:338:LYS:HB3	5:A:2350:HOH:O	2.11	0.49
1:B:380:CYS:SG	1:B:410:ASN:ND2	2.86	0.48
1:B:235:PRO:HG2	1:B:238:TYR:HD1	1.79	0.48
1:B:69:GLY:HA2	1:B:118:LYS:HE3	1.95	0.47
1:A:172:SER:HB2	1:B:59:ARG:NH2	2.29	0.47
1:B:25:VAL:HG23	2:B:1405:AMG:O6	2.14	0.47
1:A:147:ARG:HD2	1:A:147:ARG:C	2.35	0.47
1:B:296:VAL:HG11	1:B:308:ILE:HD11	1.96	0.47
1:B:123:GLU:HG2	1:B:130:ASP:N	2.30	0.47
1:B:370:TYR:CD1	1:B:424:GLU:HG2	2.50	0.46
1:A:172:SER:HB2	1:B:59:ARG:HH21	1.80	0.46
1:B:219:VAL:HG23	1:B:267:GLY:HA2	1.97	0.46
1:A:178:VAL:HG23	1:A:220:GLY:HA2	1.97	0.46
1:B:105:GLU:CD	5:B:2007:HOH:O	2.54	0.46
1:A:400:ASN:ND2	5:A:2267:HOH:O	2.48	0.45
1:B:138:ASN:N	1:B:138:ASN:OD1	2.51	0.44
1:B:231:MET:HB3	1:B:249:LYS:HD2	1.99	0.44
1:B:399:TRP:CE2	1:B:401:PRO:HB3	2.53	0.44
1:B:107:VAL:HG22	5:B:2007:HOH:O	2.17	0.43
1:A:382:TRP:O	1:A:404:VAL:HA	2.17	0.43
1:A:172:SER:HG	1:B:61:TYR:HE2	1.65	0.43
1:B:167:LEU:HD22	1:B:178:VAL:CG1	2.49	0.42
1:B:236:ASN:HB2	5:B:2212:HOH:O	2.20	0.42
1:A:372:SER:O	1:A:373:ASP:CB	2.67	0.42
1:A:325:GLU:HG3	5:A:2353:HOH:O	2.19	0.42
1:B:89:ARG:HB3	1:B:114:LEU:HD12	2.02	0.42
1:A:79:THR:O	1:A:84:ILE:HA	2.20	0.42
1:A:295:MET:SD	1:A:298:CYS:SG	3.18	0.42
1:B:101:ASN:HB2	5:B:2071:HOH:O	2.20	0.41
1:B:372:SER:O	1:B:373:ASP:CB	2.68	0.41
1:B:360:THR:O	1:B:361:THR:O	2.37	0.41
1:B:23:ASP:OD2	2:B:1405:AMG:O4	2.38	0.41
1:B:290:THR:HG22	1:B:335:ILE:HB	2.02	0.41
1:B:344:LYS:HG3	1:B:345:VAL:N	2.34	0.41
1:B:408:ARG:HB3	1:B:425:ASP:OD1	2.21	0.41
1:A:280:LYS:NZ	5:A:2417:HOH:O	2.48	0.40
1:A:155:TYR:CG	1:A:328:SER:HB3	2.56	0.40
1:A:137:GLN:NE2	1:A:139:LEU:HD12	2.36	0.40
1:B:25:VAL:HG12	1:B:31:GLY:HA3	2.02	0.40

All (1) symmetry-related close contacts are listed below. The label for Atom-2 includes the sym-

metry operator and encoded unit-cell translations to be applied.

Atom-1	Atom-2	Interatomic distance (Å)	Clash overlap (Å)
1:B:134:TYR:OH	1:B:164:ASP:OD2[1_565]	2.16	0.04

5.3 Torsion angles [i](#)

5.3.1 Protein backbone [i](#)

In the following table, the Percentiles column shows the percent Ramachandran outliers of the chain as a percentile score with respect to all X-ray entries followed by that with respect to entries of similar resolution.

The Analysed column shows the number of residues for which the backbone conformation was analysed, and the total number of residues.

Mol	Chain	Analysed	Favoured	Allowed	Outliers	Percentiles	
1	A	430/432 (100%)	417 (97%)	9 (2%)	4 (1%)	17	8
1	B	429/432 (99%)	412 (96%)	13 (3%)	4 (1%)	17	8
All	All	859/864 (99%)	829 (96%)	22 (3%)	8 (1%)	17	8

All (8) Ramachandran outliers are listed below:

Mol	Chain	Res	Type
1	A	359	GLY
1	A	361	THR
1	B	361	THR
1	A	373	ASP
1	B	359	GLY
1	B	373	ASP
1	A	360	THR
1	B	82	PRO

5.3.2 Protein sidechains [i](#)

In the following table, the Percentiles column shows the percent sidechain outliers of the chain as a percentile score with respect to all X-ray entries followed by that with respect to entries of similar resolution.

The Analysed column shows the number of residues for which the sidechain conformation was analysed, and the total number of residues.

Mol	Chain	Analysed	Rotameric	Outliers	Percentiles	
1	A	370/370 (100%)	358 (97%)	12 (3%)	39	27
1	B	370/370 (100%)	363 (98%)	7 (2%)	57	50
All	All	740/740 (100%)	721 (97%)	19 (3%)	46	36

All (19) residues with a non-rotameric sidechain are listed below:

Mol	Chain	Res	Type
1	A	81	TYR
1	A	105	GLU
1	A	137	GLN
1	A	138	ASN
1	A	167	LEU
1	A	179	LEU
1	A	187	LEU
1	A	285	ASP
1	A	301	ASN
1	A	304	VAL
1	A	315	SER
1	A	360	THR
1	B	2	VAL
1	B	137	GLN
1	B	138	ASN
1	B	209	ASP
1	B	313	SER
1	B	315	SER
1	B	349	LEU

Some sidechains can be flipped to improve hydrogen bonding and reduce clashes. All (8) such sidechains are listed below:

Mol	Chain	Res	Type
1	A	186	ASN
1	A	383	GLN
1	A	400	ASN
1	B	28	GLN
1	B	186	ASN
1	B	294	ASN
1	B	383	GLN
1	B	410	ASN

5.3.3 RNA ⓘ

There are no RNA molecules in this entry.

5.4 Non-standard residues in protein, DNA, RNA chains ⓘ

1 non-standard protein/DNA/RNA residue is modelled in this entry.

In the following table, the Counts columns list the number of bonds (or angles) for which Mogul statistics could be retrieved, the number of bonds (or angles) that are observed in the model and the number of bonds (or angles) that are defined in the Chemical Component Dictionary. The Link column lists molecule types, if any, to which the group is linked. The Z score for a bond length (or angle) is the number of standard deviations the observed value is removed from the expected value. A bond length (or angle) with $|Z| > 2$ is considered an outlier worth inspection. RMSZ is the root-mean-square of all Z scores of the bond lengths (or angles).

Mol	Type	Chain	Res	Link	Bond lengths			Bond angles		
					Counts	RMSZ	$\# Z > 2$	Counts	RMSZ	$\# Z > 2$
1	PCA	A	1	-	7,8,9	1.73	1 (14%)	9,10,12	2.24	5 (55%)

In the following table, the Chirals column lists the number of chiral outliers, the number of chiral centers analysed, the number of these observed in the model and the number defined in the Chemical Component Dictionary. Similar counts are reported in the Torsion and Rings columns. '-' means no outliers of that kind were identified.

Mol	Type	Chain	Res	Link	Chirals	Torsions	Rings
1	PCA	A	1	-	-	0/0/11/13	0/1/1/1

All (1) bond length outliers are listed below:

Mol	Chain	Res	Type	Atoms	Z	Observed(Å)	Ideal(Å)
1	A	1	PCA	CD-N	4.31	1.45	1.34

All (5) bond angle outliers are listed below:

Mol	Chain	Res	Type	Atoms	Z	Observed(°)	Ideal(°)
1	A	1	PCA	CA-N-CD	-3.28	102.34	113.58
1	A	1	PCA	OE-CD-CG	-2.83	121.83	126.76
1	A	1	PCA	CG-CD-N	2.72	115.44	108.39
1	A	1	PCA	CB-CA-C	-2.65	109.05	112.70
1	A	1	PCA	CB-CA-N	2.53	110.55	103.30

There are no chirality outliers.

There are no torsion outliers.

There are no ring outliers.

No monomer is involved in short contacts.

5.5 Carbohydrates [i](#)

There are no monosaccharides in this entry.

5.6 Ligand geometry [i](#)

Of 24 ligands modelled in this entry, 14 are monoatomic - leaving 10 for Mogul analysis.

In the following table, the Counts columns list the number of bonds (or angles) for which Mogul statistics could be retrieved, the number of bonds (or angles) that are observed in the model and the number of bonds (or angles) that are defined in the Chemical Component Dictionary. The Link column lists molecule types, if any, to which the group is linked. The Z score for a bond length (or angle) is the number of standard deviations the observed value is removed from the expected value. A bond length (or angle) with $|Z| > 2$ is considered an outlier worth inspection. RMSZ is the root-mean-square of all Z scores of the bond lengths (or angles).

Mol	Type	Chain	Res	Link	Bond lengths			Bond angles		
					Counts	RMSZ	$\# Z > 2$	Counts	RMSZ	$\# Z > 2$
2	AMG	A	1402	-	13,13,13	0.67	0	18,18,18	0.75	0
2	AMG	B	1405	-	13,13,13	0.71	0	18,18,18	1.33	4 (22%)
2	AMG	A	1404	-	13,13,13	0.72	0	18,18,18	0.63	0
2	AMG	A	1403	-	13,13,13	0.82	1 (7%)	18,18,18	1.07	1 (5%)
2	AMG	B	1408	-	13,13,13	0.68	0	18,18,18	0.90	0
2	AMG	A	1400	-	13,13,13	0.73	1 (7%)	18,18,18	0.64	0
2	AMG	B	1407	-	13,13,13	0.70	0	18,18,18	0.71	0
2	AMG	B	1409	-	13,13,13	0.90	1 (7%)	18,18,18	1.00	2 (11%)
2	AMG	A	1401	-	13,13,13	0.85	1 (7%)	18,18,18	0.70	0
2	AMG	B	1406	-	13,13,13	0.78	1 (7%)	18,18,18	0.88	1 (5%)

In the following table, the Chirals column lists the number of chiral outliers, the number of chiral centers analysed, the number of these observed in the model and the number defined in the Chemical Component Dictionary. Similar counts are reported in the Torsion and Rings columns. '-' means no outliers of that kind were identified.

Mol	Type	Chain	Res	Link	Chirals	Torsions	Rings
2	AMG	A	1402	-	-	2/4/24/24	0/1/1/1
2	AMG	B	1405	-	-	4/4/24/24	0/1/1/1
2	AMG	A	1404	-	-	0/4/24/24	0/1/1/1
2	AMG	A	1403	-	-	0/4/24/24	0/1/1/1

Continued on next page...

Continued from previous page...

Mol	Type	Chain	Res	Link	Chirals	Torsions	Rings
2	AMG	B	1408	-	-	2/4/24/24	0/1/1/1
2	AMG	A	1400	-	-	0/4/24/24	0/1/1/1
2	AMG	B	1407	-	-	0/4/24/24	0/1/1/1
2	AMG	B	1409	-	-	4/4/24/24	0/1/1/1
2	AMG	A	1401	-	-	0/4/24/24	0/1/1/1
2	AMG	B	1406	-	-	2/4/24/24	0/1/1/1

All (5) bond length outliers are listed below:

Mol	Chain	Res	Type	Atoms	Z	Observed(Å)	Ideal(Å)
2	A	1401	AMG	O1-C1	2.61	1.44	1.40
2	B	1409	AMG	O1-C1	2.60	1.44	1.40
2	A	1403	AMG	O1-C1	2.46	1.44	1.40
2	B	1406	AMG	O1-C1	2.26	1.44	1.40
2	A	1400	AMG	O1-C1	2.20	1.43	1.40

All (8) bond angle outliers are listed below:

Mol	Chain	Res	Type	Atoms	Z	Observed(°)	Ideal(°)
2	B	1405	AMG	O1-C1-C2	3.28	112.00	108.15
2	A	1403	AMG	O1-C1-C2	3.20	111.90	108.15
2	B	1406	AMG	O5-C5-C6	3.00	113.89	106.44
2	B	1409	AMG	O5-C1-C2	-2.33	105.42	110.35
2	B	1409	AMG	O1-C1-C2	2.12	110.63	108.15
2	B	1405	AMG	C7-O1-C1	-2.07	110.08	113.27
2	B	1405	AMG	C1-C2-C3	2.06	114.28	110.00
2	B	1405	AMG	O5-C5-C6	2.05	111.53	106.44

There are no chirality outliers.

All (14) torsion outliers are listed below:

Mol	Chain	Res	Type	Atoms
2	A	1402	AMG	O5-C1-O1-C7
2	B	1405	AMG	O5-C1-O1-C7
2	B	1409	AMG	O5-C1-O1-C7
2	B	1406	AMG	O5-C5-C6-O6
2	A	1402	AMG	C2-C1-O1-C7
2	B	1405	AMG	C2-C1-O1-C7
2	B	1409	AMG	C2-C1-O1-C7
2	B	1409	AMG	O5-C5-C6-O6

Continued on next page...

Continued from previous page...

Mol	Chain	Res	Type	Atoms
2	B	1405	AMG	O5-C5-C6-O6
2	B	1406	AMG	C4-C5-C6-O6
2	B	1405	AMG	C4-C5-C6-O6
2	B	1408	AMG	C4-C5-C6-O6
2	B	1408	AMG	O5-C5-C6-O6
2	B	1409	AMG	C4-C5-C6-O6

There are no ring outliers.

1 monomer is involved in 3 short contacts:

Mol	Chain	Res	Type	Clashes	Symm-Clashes
2	B	1405	AMG	3	0

5.7 Other polymers [i](#)

There are no such residues in this entry.

5.8 Polymer linkage issues [i](#)

There are no chain breaks in this entry.

6 Fit of model and data [i](#)

6.1 Protein, DNA and RNA chains [i](#)

In the following table, the column labelled ‘#RSRZ> 2’ contains the number (and percentage) of RSRZ outliers, followed by percent RSRZ outliers for the chain as percentile scores relative to all X-ray entries and entries of similar resolution. The OWAB column contains the minimum, median, 95th percentile and maximum values of the occupancy-weighted average B-factor per residue. The column labelled ‘Q< 0.9’ lists the number of (and percentage) of residues with an average occupancy less than 0.9.

Mol	Chain	Analysed	<RSRZ>	#RSRZ>2	OWAB(Å ²)	Q<0.9
1	A	431/432 (99%)	-0.22	2 (0%) 91 94	15, 24, 35, 48	0
1	B	431/432 (99%)	0.04	6 (1%) 75 82	18, 33, 47, 63	0
All	All	862/864 (99%)	-0.09	8 (0%) 84 89	15, 27, 43, 63	0

All (8) RSRZ outliers are listed below:

Mol	Chain	Res	Type	RSRZ
1	A	81	TYR	3.5
1	B	81	TYR	3.1
1	B	222	TYR	3.1
1	B	74	MET	2.9
1	B	68	SER	2.7
1	A	361	THR	2.6
1	B	82	PRO	2.3
1	B	61	TYR	2.1

6.2 Non-standard residues in protein, DNA, RNA chains [i](#)

In the following table, the Atoms column lists the number of modelled atoms in the group and the number defined in the chemical component dictionary. The B-factors column lists the minimum, median, 95th percentile and maximum values of B factors of atoms in the group. The column labelled ‘Q< 0.9’ lists the number of atoms with occupancy less than 0.9.

Mol	Type	Chain	Res	Atoms	RSCC	RSR	B-factors(Å ²)	Q<0.9
1	PCA	A	1	8/9	0.93	0.21	36,37,38,39	0

6.3 Carbohydrates [i](#)

There are no monosaccharides in this entry.

6.4 Ligands ⓘ

In the following table, the Atoms column lists the number of modelled atoms in the group and the number defined in the chemical component dictionary. The B-factors column lists the minimum, median, 95th percentile and maximum values of B factors of atoms in the group. The column labelled 'Q< 0.9' lists the number of atoms with occupancy less than 0.9.

Mol	Type	Chain	Res	Atoms	RSCC	RSR	B-factors(Å ²)	Q<0.9
2	AMG	B	1405	13/13	0.80	0.19	54,55,56,58	0
2	AMG	B	1409	13/13	0.80	0.15	58,59,62,62	0
2	AMG	B	1406	13/13	0.84	0.13	35,39,43,43	0
2	AMG	B	1408	13/13	0.87	0.11	41,45,46,47	0
2	AMG	B	1407	13/13	0.89	0.13	40,44,46,46	0
2	AMG	A	1404	13/13	0.93	0.11	29,35,39,39	0
2	AMG	A	1402	13/13	0.94	0.11	29,33,37,41	0
3	CA	B	1001	1/1	0.94	0.06	40,40,40,40	0
4	MG	B	2001	1/1	0.94	0.26	52,52,52,52	0
2	AMG	A	1401	13/13	0.94	0.10	29,32,37,37	0
2	AMG	A	1403	13/13	0.95	0.10	23,24,28,30	0
3	CA	B	1005	1/1	0.95	0.07	37,37,37,37	0
3	CA	B	1003	1/1	0.96	0.06	33,33,33,33	0
3	CA	B	1002	1/1	0.97	0.09	42,42,42,42	0
2	AMG	A	1400	13/13	0.97	0.07	21,24,28,30	0
3	CA	A	1002	1/1	0.98	0.08	25,25,25,25	0
3	CA	B	1004	1/1	0.98	0.06	35,35,35,35	0
4	MG	B	2002	1/1	0.98	0.08	38,38,38,38	0
4	MG	A	2001	1/1	0.98	0.10	28,28,28,28	0
3	CA	A	1004	1/1	0.99	0.07	19,19,19,19	0
3	CA	A	1001	1/1	0.99	0.09	21,21,21,21	0
3	CA	A	1003	1/1	0.99	0.08	32,32,32,32	0
3	CA	A	1005	1/1	0.99	0.07	21,21,21,21	0
4	MG	A	2002	1/1	0.99	0.05	23,23,23,23	0

6.5 Other polymers ⓘ

There are no such residues in this entry.