



# Full wwPDB X-ray Structure Validation Report ⓘ

May 16, 2020 – 11:46 am BST

PDB ID : 5Z5P  
Title : Crystal structure of ConA-R3M  
Authors : Chen, G.S.; Gan, J.H.; Hu, R.T.  
Deposited on : 2018-01-19  
Resolution : 1.40 Å(reported)

This is a Full wwPDB X-ray Structure Validation Report for a publicly released PDB entry.

We welcome your comments at [validation@mail.wwpdb.org](mailto:validation@mail.wwpdb.org)

A user guide is available at

<https://www.wwpdb.org/validation/2017/XrayValidationReportHelp>

with specific help available everywhere you see the ⓘ symbol.

---

The following versions of software and data (see [references ⓘ](#)) were used in the production of this report:

MolProbity : 4.02b-467  
Mogul : 1.8.5 (274361), CSD as541be (2020)  
Xtriage (Phenix) : 1.13  
EDS : 2.11  
buster-report : 1.1.7 (2018)  
Percentile statistics : 20191225.v01 (using entries in the PDB archive December 25th 2019)  
Refmac : 5.8.0158  
CCP4 : 7.0.044 (Gargrove)  
Ideal geometry (proteins) : Engh & Huber (2001)  
Ideal geometry (DNA, RNA) : Parkinson et al. (1996)  
Validation Pipeline (wwPDB-VP) : 2.11

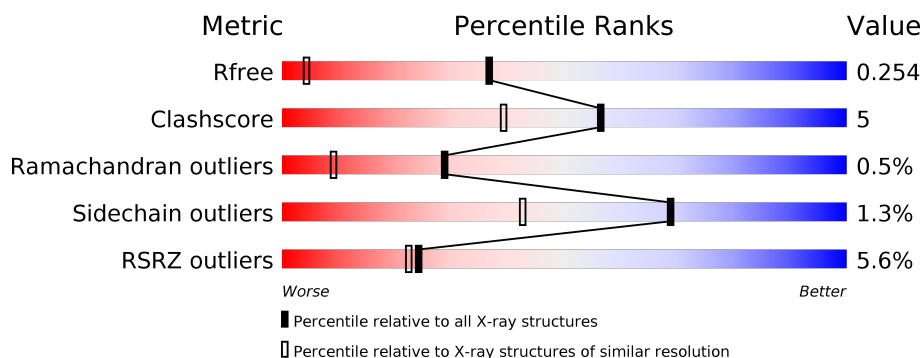
# 1 Overall quality at a glance ⓘ

The following experimental techniques were used to determine the structure:

## *X-RAY DIFFRACTION*

The reported resolution of this entry is 1.40 Å.

Percentile scores (ranging between 0-100) for global validation metrics of the entry are shown in the following graphic. The table shows the number of entries on which the scores are based.



Metric	Whole archive (#Entries)	Similar resolution (#Entries, resolution range(Å))
$R_{free}$	130704	1714 (1.40-1.40)
Clashscore	141614	1812 (1.40-1.40)
Ramachandran outliers	138981	1763 (1.40-1.40)
Sidechain outliers	138945	1762 (1.40-1.40)
RSRZ outliers	127900	1674 (1.40-1.40)

The table below summarises the geometric issues observed across the polymeric chains and their fit to the electron density. The red, orange, yellow and green segments on the lower bar indicate the fraction of residues that contain outliers for  $\geq 3$ , 2, 1 and 0 types of geometric quality criteria respectively. A grey segment represents the fraction of residues that are not modelled. The numeric value for each fraction is indicated below the corresponding segment, with a dot representing fractions  $\leq 5\%$ . The upper red bar (where present) indicates the fraction of residues that have poor fit to the electron density. The numeric value is given above the bar.

Mol	Chain	Length	Quality of chain
1	A	237	<div> <div>3%</div> <div>84%</div> <div>9%</div> <div>7%</div> </div>
1	B	237	<div> <div>7%</div> <div>84%</div> <div>10%</div> <div>6%</div> </div>

The following table lists non-polymeric compounds, carbohydrate monomers and non-standard residues in protein, DNA, RNA chains that are outliers for geometric or electron-density-fit criteria:

Mol	Type	Chain	Res	Chirality	Geometry	Clashes	Electron density
4	R3M	A	303	X	-	-	-
4	R3M	B	301	X	-	-	-

## 2 Entry composition

There are 5 unique types of molecules in this entry. The entry contains 3992 atoms, of which 56 are hydrogens and 0 are deuteriums.

In the tables below, the ZeroOcc column contains the number of atoms modelled with zero occupancy, the AltConf column contains the number of residues with at least one atom in alternate conformation and the Trace column contains the number of residues modelled with at most 2 atoms.

- Molecule 1 is a protein called Concanavalin-A.

Mol	Chain	Residues	Atoms					ZeroOcc	AltConf	Trace
1	A	220	Total	C	N	O	S	0	15	0
			1774	1135	290	346	3			
1	B	223	Total	C	N	O	S	0	5	0
			1749	1110	291	346	2			

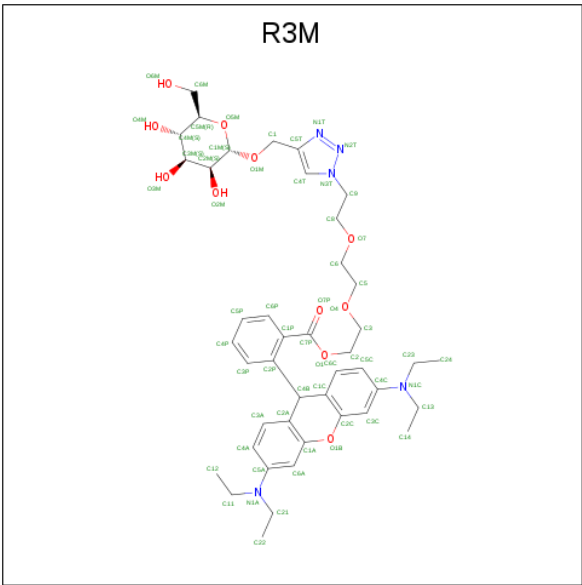
- Molecule 2 is MANGANESE (II) ION (three-letter code: MN) (formula: Mn).

Mol	Chain	Residues	Atoms		ZeroOcc	AltConf
2	B	1	Total	Mn	0	0
			1	1		
2	A	1	Total	Mn	0	0
			1	1		

- Molecule 3 is CALCIUM ION (three-letter code: CA) (formula: Ca).

Mol	Chain	Residues	Atoms		ZeroOcc	AltConf
3	B	2	Total	Ca	0	0
			2	2		
3	A	1	Total	Ca	0	0
			1	1		

- Molecule 4 is 2-[2-(2-{4-[(alpha-D-mannopyranosyloxy)methyl]-1H-1,2,3-triazol-1-yl}ethoxy)ethoxy]ethyl 2-[3,6-bis(diethylamino)-9H-xanthen-9-yl]benzoate (three-letter code: R3M) (formula: C<sub>43</sub>H<sub>57</sub>N<sub>5</sub>O<sub>11</sub>).



Mol	Chain	Residues	Atoms					ZeroOcc	AltConf
4	A	1	Total	C	H	N	O	0	0
			115	43	56	5	11		
4	B	1	Total	C	N	O		0	0
			59	43	5	11			

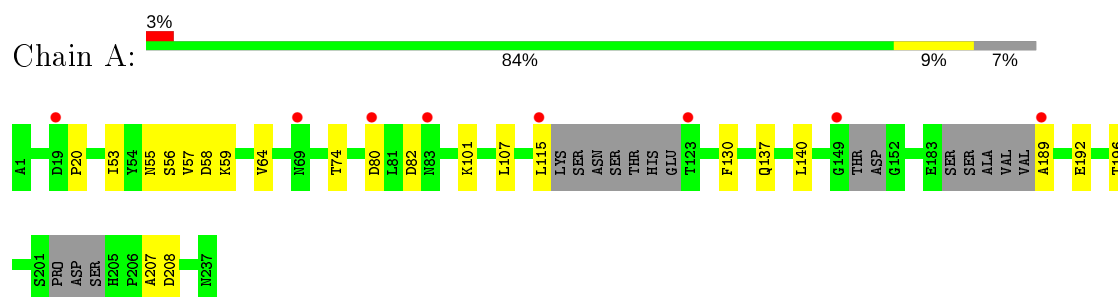
- Molecule 5 is water.

Mol	Chain	Residues	Atoms		ZeroOcc	AltConf
5	A	167	Total	O	0	0
			167	167		
5	B	123	Total	O	0	0
			123	123		

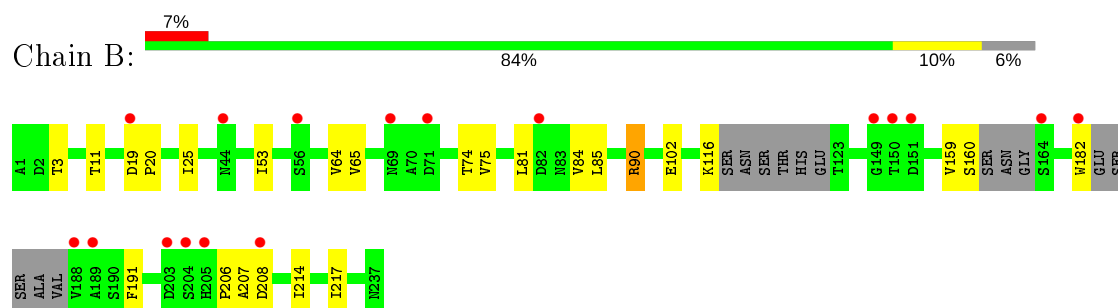
### 3 Residue-property plots [i](#)

These plots are drawn for all protein, RNA and DNA chains in the entry. The first graphic for a chain summarises the proportions of the various outlier classes displayed in the second graphic. The second graphic shows the sequence view annotated by issues in geometry and electron density. Residues are color-coded according to the number of geometric quality criteria for which they contain at least one outlier: green = 0, yellow = 1, orange = 2 and red = 3 or more. A red dot above a residue indicates a poor fit to the electron density ( $\text{RSRZ} > 2$ ). Stretches of 2 or more consecutive residues without any outlier are shown as a green connector. Residues present in the sample, but not in the model, are shown in grey.

#### • Molecule 1: Concanavalin-A



#### • Molecule 1: Concanavalin-A



## 4 Data and refinement statistics

Property	Value	Source
Space group	P 2 21 21	Depositor
Cell constants a, b, c, $\alpha$ , $\beta$ , $\gamma$	58.74Å 61.95Å 115.96Å 90.00° 90.00° 90.00°	Depositor
Resolution (Å)	58.74 – 1.40 42.62 – 1.40	Depositor EDS
% Data completeness (in resolution range)	90.8 (58.74-1.40) 90.8 (42.62-1.40)	Depositor EDS
$R_{merge}$	(Not available)	Depositor
$R_{sym}$	(Not available)	Depositor
$\langle I/\sigma(I) \rangle$ <sup>1</sup>	4.48 (at 1.40Å)	Xtriage
Refinement program	REFMAC 5.8.0131	Depositor
R, $R_{free}$	0.193 , 0.241 0.212 , 0.254	Depositor DCC
$R_{free}$ test set	3721 reflections (4.87%)	wwPDB-VP
Wilson B-factor (Å <sup>2</sup> )	13.3	Xtriage
Anisotropy	0.048	Xtriage
Bulk solvent $k_{sol}$ (e/Å <sup>3</sup> ), $B_{sol}$ (Å <sup>2</sup> )	0.35 , 39.4	EDS
L-test for twinning <sup>2</sup>	$\langle  L  \rangle = 0.46$ , $\langle L^2 \rangle = 0.29$	Xtriage
Estimated twinning fraction	No twinning to report.	Xtriage
$F_o, F_c$ correlation	0.94	EDS
Total number of atoms	3992	wwPDB-VP
Average B, all atoms (Å <sup>2</sup> )	17.0	wwPDB-VP

Xtriage's analysis on translational NCS is as follows: *The largest off-origin peak in the Patterson function is 10.13% of the height of the origin peak. No significant pseudotranslation is detected.*

<sup>1</sup>Intensities estimated from amplitudes.

<sup>2</sup>Theoretical values of  $\langle |L| \rangle$ ,  $\langle L^2 \rangle$  for acentric reflections are 0.5, 0.333 respectively for untwinned datasets, and 0.375, 0.2 for perfectly twinned datasets.

## 5 Model quality

### 5.1 Standard geometry

Bond lengths and bond angles in the following residue types are not validated in this section: R3M, CA, MN

The Z score for a bond length (or angle) is the number of standard deviations the observed value is removed from the expected value. A bond length (or angle) with  $|Z| > 5$  is considered an outlier worth inspection. RMSZ is the root-mean-square of all Z scores of the bond lengths (or angles).

Mol	Chain	Bond lengths		Bond angles	
		RMSZ	$\# Z  > 5$	RMSZ	$\# Z  > 5$
1	A	1.15	0/1838	1.07	0/2497
1	B	1.10	0/1788	1.15	0/2433
All	All	1.12	0/3626	1.11	0/4930

There are no bond length outliers.

There are no bond angle outliers.

There are no chirality outliers.

There are no planarity outliers.

### 5.2 Too-close contacts

In the following table, the Non-H and H(model) columns list the number of non-hydrogen atoms and hydrogen atoms in the chain respectively. The H(added) column lists the number of hydrogen atoms added and optimized by MolProbity. The Clashes column lists the number of clashes within the asymmetric unit, whereas Symm-Clashes lists symmetry related clashes.

Mol	Chain	Non-H	H(model)	H(added)	Clashes	Symm-Clashes
1	A	1774	0	1758	17	0
1	B	1749	0	1703	18	0
2	A	1	0	0	0	0
2	B	1	0	0	0	0
3	A	1	0	0	0	0
3	B	2	0	0	0	0
4	A	59	56	55	1	0
4	B	59	0	55	0	0
5	A	167	0	0	2	0
5	B	123	0	0	2	0
All	All	3936	56	3571	36	0



The all-atom clashscore is defined as the number of clashes found per 1000 atoms (including hydrogen atoms). The all-atom clashscore for this structure is 5.

All (36) close contacts within the same asymmetric unit are listed below, sorted by their clash magnitude.

Atom-1	Atom-2	Interatomic distance (Å)	Clash overlap (Å)
1:A:64[B]:VAL:HG12	1:A:74[B]:THR:HG22	1.08	1.07
1:A:64[B]:VAL:HG12	1:A:74[B]:THR:CG2	1.89	1.02
1:A:64[B]:VAL:CG1	1:A:74[B]:THR:HG22	1.93	0.98
1:B:102:GLU:OE2	1:B:206:PRO:HB2	1.65	0.97
1:B:64:VAL:HG23	1:B:74[B]:THR:HG22	1.55	0.88
1:A:59:LYS:NZ	1:A:80:ASP:OD1	2.11	0.79
1:A:137[B]:GLN:HG2	1:A:140:LEU:HD12	1.71	0.73
1:B:90:ARG:HG3	1:B:217:ILE:HA	1.72	0.71
1:A:58[A]:ASP:OD1	5:A:402:HOH:O	2.15	0.65
1:A:80:ASP:OD1	1:A:82:ASP:OD2	2.14	0.65
1:B:25[B]:ILE:HD12	1:B:65:VAL:HG23	1.80	0.63
1:A:130:PHE:CE1	1:A:137[B]:GLN:NE2	2.68	0.61
1:B:64:VAL:CG2	1:B:74[B]:THR:HG22	2.30	0.61
1:B:208:ASP:HB3	5:B:462:HOH:O	2.02	0.60
1:A:74[B]:THR:HG21	5:A:409:HOH:O	2.05	0.57
1:A:64[B]:VAL:CG1	1:A:74[B]:THR:CG2	2.69	0.53
1:B:64:VAL:HG23	1:B:74[B]:THR:CG2	2.33	0.53
1:B:3:THR:HG21	1:B:84:VAL:O	2.08	0.53
1:B:207:ALA:HB1	1:B:208:ASP:CG	2.29	0.52
1:B:81:LEU:HD22	1:B:85:LEU:HD12	1.92	0.50
1:A:56:SER:HG	1:A:189:ALA:N	2.10	0.50
1:B:74[A]:THR:HG22	1:B:75:VAL:N	2.27	0.49
1:A:64[B]:VAL:HG12	1:A:74[B]:THR:CB	2.43	0.49
1:B:102:GLU:OE2	1:B:206:PRO:CB	2.52	0.48
1:B:25[B]:ILE:HD12	1:B:65:VAL:CG2	2.44	0.48
1:B:182:TRP:C	1:B:182:TRP:CE3	2.89	0.47
1:B:159:VAL:HG12	1:B:160:SER:O	2.15	0.46
1:A:207:ALA:HA	1:A:208:ASP:HA	1.80	0.46
1:A:56:SER:HB3	1:A:189:ALA:HB3	1.96	0.46
1:A:53[A]:ILE:HG22	1:A:192:GLU:HG2	1.99	0.45
1:A:55:ASN:OD1	1:A:57:VAL:HB	2.17	0.45
4:A:303:R3M:H44	4:A:303:R3M:H40	1.88	0.43
1:B:191:PHE:CZ	1:B:214:ILE:HD11	2.53	0.43
1:B:19:ASP:OD1	5:B:401:HOH:O	2.21	0.43
1:A:107[B]:LEU:HB2	1:A:196:THR:OG1	2.18	0.43
1:B:11:THR:HG21	1:B:102:GLU:OE1	2.20	0.42

There are no symmetry-related clashes.

## 5.3 Torsion angles

### 5.3.1 Protein backbone

In the following table, the Percentiles column shows the percent Ramachandran outliers of the chain as a percentile score with respect to all X-ray entries followed by that with respect to entries of similar resolution.

The Analysed column shows the number of residues for which the backbone conformation was analysed, and the total number of residues.

Mol	Chain	Analysed	Favoured	Allowed	Outliers	Percentiles	
1	A	225/237 (95%)	217 (96%)	7 (3%)	1 (0%)	34	12
1	B	220/237 (93%)	212 (96%)	7 (3%)	1 (0%)	29	9
All	All	445/474 (94%)	429 (96%)	14 (3%)	2 (0%)	29	12

All (2) Ramachandran outliers are listed below:

Mol	Chain	Res	Type
1	B	20	PRO
1	A	20	PRO

### 5.3.2 Protein sidechains

In the following table, the Percentiles column shows the percent sidechain outliers of the chain as a percentile score with respect to all X-ray entries followed by that with respect to entries of similar resolution.

The Analysed column shows the number of residues for which the sidechain conformation was analysed, and the total number of residues.

Mol	Chain	Analysed	Rotameric	Outliers	Percentiles	
1	A	202/203 (100%)	200 (99%)	2 (1%)	76	53
1	B	196/203 (97%)	193 (98%)	3 (2%)	65	37
All	All	398/406 (98%)	393 (99%)	5 (1%)	69	42

All (5) residues with a non-rotameric sidechain are listed below:

Mol	Chain	Res	Type
1	A	101	LYS
1	A	115	LEU
1	B	53	ILE
1	B	90	ARG

*Continued on next page...*

*Continued from previous page...*

Mol	Chain	Res	Type
1	B	116	LYS

Some sidechains can be flipped to improve hydrogen bonding and reduce clashes. All (6) such sidechains are listed below:

Mol	Chain	Res	Type
1	A	166	GLN
1	A	237	ASN
1	B	43	GLN
1	B	83	ASN
1	B	104	ASN
1	B	237	ASN

### 5.3.3 RNA ⓘ

There are no RNA molecules in this entry.

## 5.4 Non-standard residues in protein, DNA, RNA chains ⓘ

There are no non-standard protein/DNA/RNA residues in this entry.

## 5.5 Carbohydrates ⓘ

There are no carbohydrates in this entry.

## 5.6 Ligand geometry ⓘ

Of 7 ligands modelled in this entry, 5 are monoatomic - leaving 2 for Mogul analysis.

In the following table, the Counts columns list the number of bonds (or angles) for which Mogul statistics could be retrieved, the number of bonds (or angles) that are observed in the model and the number of bonds (or angles) that are defined in the Chemical Component Dictionary. The Link column lists molecule types, if any, to which the group is linked. The Z score for a bond length (or angle) is the number of standard deviations the observed value is removed from the expected value. A bond length (or angle) with  $|Z| > 2$  is considered an outlier worth inspection. RMSZ is the root-mean-square of all Z scores of the bond lengths (or angles).

Mol	Type	Chain	Res	Link	Bond lengths			Bond angles		
					Counts	RMSZ	$\# Z  > 2$	Counts	RMSZ	$\# Z  > 2$
4	R3M	B	301	-	64,64,64	2.23	18 (28%)	81,88,88	2.66	24 (29%)
4	R3M	A	303	-	64,64,64	3.07	22 (34%)	81,88,88	2.95	25 (30%)

In the following table, the Chirals column lists the number of chiral outliers, the number of chiral centers analysed, the number of these observed in the model and the number defined in the Chemical Component Dictionary. Similar counts are reported in the Torsion and Rings columns. '-' means no outliers of that kind were identified.

Mol	Type	Chain	Res	Link	Chirals	Torsions	Rings
4	R3M	B	301	-	1/1/9/9	4/41/75/75	0/6/6/6
4	R3M	A	303	-	1/1/9/9	4/41/75/75	0/6/6/6

All (40) bond length outliers are listed below:

Mol	Chain	Res	Type	Atoms	Z	Observed(Å)	Ideal(Å)
4	A	303	R3M	C5T-N1T	-11.33	1.18	1.34
4	A	303	R3M	N2T-N3T	-8.32	1.18	1.34
4	A	303	R3M	N1T-N2T	-8.02	1.19	1.34
4	A	303	R3M	C4A-C5A	7.10	1.53	1.39
4	B	301	R3M	C2A-C4B	-6.29	1.41	1.52
4	B	301	R3M	C4T-N3T	-5.97	1.29	1.35
4	B	301	R3M	C4A-C5A	5.78	1.50	1.39
4	B	301	R3M	C4A-C3A	5.57	1.48	1.38
4	A	303	R3M	C6A-C5A	5.43	1.49	1.39
4	A	303	R3M	C2A-C4B	-5.43	1.43	1.52
4	A	303	R3M	C4A-C3A	5.03	1.47	1.38
4	B	301	R3M	C1P-C2P	-4.76	1.35	1.40
4	B	301	R3M	C1C-C4B	-4.55	1.44	1.52
4	A	303	R3M	C6A-C1A	4.42	1.46	1.38
4	A	303	R3M	C1P-C2P	-4.27	1.35	1.40
4	A	303	R3M	C6C-C1C	-4.02	1.34	1.39
4	B	301	R3M	C3A-C2A	4.00	1.45	1.39
4	A	303	R3M	O2M-C2M	-3.94	1.33	1.43
4	A	303	R3M	C4T-C5T	3.63	1.41	1.36
4	B	301	R3M	C2P-C4B	3.53	1.57	1.53
4	A	303	R3M	C2P-C4B	3.19	1.57	1.53
4	B	301	R3M	C6A-C5A	3.16	1.45	1.39
4	A	303	R3M	C3C-C4C	-2.98	1.34	1.39
4	A	303	R3M	O1-C2	-2.88	1.37	1.45
4	A	303	R3M	C1C-C4B	-2.87	1.47	1.52
4	A	303	R3M	C3M-C2M	-2.84	1.45	1.52
4	A	303	R3M	O1B-C2C	2.78	1.42	1.38
4	B	301	R3M	C4T-C5T	2.74	1.40	1.36
4	B	301	R3M	C3P-C2P	-2.67	1.36	1.39
4	B	301	R3M	O1B-C2C	2.64	1.42	1.38
4	B	301	R3M	C3M-C2M	-2.43	1.46	1.52
4	B	301	R3M	C4P-C3P	2.35	1.43	1.38

*Continued on next page...*

*Continued from previous page...*

Mol	Chain	Res	Type	Atoms	Z	Observed(Å)	Ideal(Å)
4	A	303	R3M	O7P-C7P	-2.32	1.16	1.22
4	A	303	R3M	C3A-C2A	2.32	1.42	1.39
4	A	303	R3M	C4M-C3M	-2.27	1.46	1.52
4	B	301	R3M	O1B-C1A	2.15	1.42	1.38
4	B	301	R3M	C5T-N1T	-2.09	1.31	1.34
4	A	303	R3M	C4P-C5P	-2.09	1.32	1.38
4	B	301	R3M	O5M-C1M	2.04	1.47	1.41
4	B	301	R3M	C3C-C2C	2.00	1.42	1.38

All (49) bond angle outliers are listed below:

Mol	Chain	Res	Type	Atoms	Z	Observed(°)	Ideal(°)
4	A	303	R3M	C1-C5T-C4T	13.47	153.90	128.45
4	B	301	R3M	N1T-N2T-N3T	-12.94	97.56	107.31
4	A	303	R3M	C9-N3T-C4T	10.79	155.19	129.82
4	A	303	R3M	N1T-N2T-N3T	9.72	114.64	107.31
4	B	301	R3M	C1C-C4B-C2A	7.27	116.67	105.83
4	A	303	R3M	C1C-C4B-C2A	6.55	115.61	105.83
4	B	301	R3M	C4T-C5T-N1T	-6.36	101.89	111.34
4	A	303	R3M	O1M-C1M-C2M	-5.91	99.08	108.30
4	A	303	R3M	C3A-C2A-C4B	-5.78	116.96	126.14
4	B	301	R3M	O1-C7P-O7P	-5.31	112.90	123.67
4	B	301	R3M	O2M-C2M-C3M	5.06	122.04	110.35
4	B	301	R3M	C3A-C4A-C5A	-5.05	113.67	120.32
4	B	301	R3M	O1M-C1M-C2M	-4.85	100.73	108.30
4	B	301	R3M	O1-C7P-C1P	4.83	121.76	112.21
4	A	303	R3M	C4T-C5T-N1T	-4.42	104.77	111.34
4	A	303	R3M	C6C-C1C-C4B	-4.03	119.74	126.14
4	B	301	R3M	C1M-C2M-C3M	3.98	118.28	110.00
4	B	301	R3M	C3P-C2P-C4B	-3.90	112.80	121.49
4	B	301	R3M	C21-N1A-C5A	-3.63	116.03	121.39
4	B	301	R3M	C6A-C5A-N1A	-3.52	117.55	121.33
4	A	303	R3M	O2M-C2M-C1M	3.46	118.45	110.05
4	A	303	R3M	C5A-C6A-C1A	-3.35	115.29	120.46
4	B	301	R3M	C4T-N3T-N2T	3.33	116.11	109.45
4	A	303	R3M	C11-N1A-C21	2.91	121.92	116.34
4	A	303	R3M	C2P-C4B-C1C	2.85	122.82	113.32
4	A	303	R3M	C1M-C2M-C3M	2.84	115.91	110.00
4	B	301	R3M	C6C-C1C-C4B	-2.83	121.64	126.14
4	A	303	R3M	C6A-C1A-C2A	2.79	126.05	121.85
4	A	303	R3M	C3A-C2A-C1A	2.79	120.90	117.75
4	A	303	R3M	C21-N1A-C5A	-2.73	117.35	121.39

*Continued on next page...*

*Continued from previous page...*

Mol	Chain	Res	Type	Atoms	Z	Observed(°)	Ideal(°)
4	B	301	R3M	C5P-C6P-C1P	2.71	124.95	119.81
4	B	301	R3M	C2P-C4B-C2A	2.70	122.30	113.32
4	A	303	R3M	O2M-C2M-C3M	2.64	116.46	110.35
4	A	303	R3M	O7-C8-C9	2.64	119.98	109.92
4	B	301	R3M	C4P-C5P-C6P	-2.54	116.31	120.19
4	B	301	R3M	C3A-C2A-C4B	-2.53	122.12	126.14
4	B	301	R3M	C1-O1M-C1M	-2.50	108.86	113.31
4	A	303	R3M	C2P-C4B-C2A	2.48	121.57	113.32
4	A	303	R3M	C4P-C3P-C2P	-2.33	118.05	121.01
4	A	303	R3M	C8-O7-C6	2.32	123.35	113.29
4	B	301	R3M	C2P-C4B-C1C	2.32	121.02	113.32
4	B	301	R3M	C1-C5T-C4T	2.30	132.80	128.45
4	B	301	R3M	C2C-O1B-C1A	-2.27	113.60	118.58
4	B	301	R3M	O4M-C4M-C3M	-2.23	105.20	110.35
4	A	303	R3M	O1B-C1A-C6A	-2.22	111.91	115.20
4	A	303	R3M	C3C-C4C-N1C	-2.10	119.07	121.33
4	A	303	R3M	C6A-C5A-N1A	-2.05	119.12	121.33
4	A	303	R3M	C5-O4-C3	2.02	122.06	113.29
4	B	301	R3M	C2-O1-C7P	2.01	120.66	116.43

All (2) chirality outliers are listed below:

Mol	Chain	Res	Type	Atom
4	B	301	R3M	C2M
4	A	303	R3M	C2M

All (8) torsion outliers are listed below:

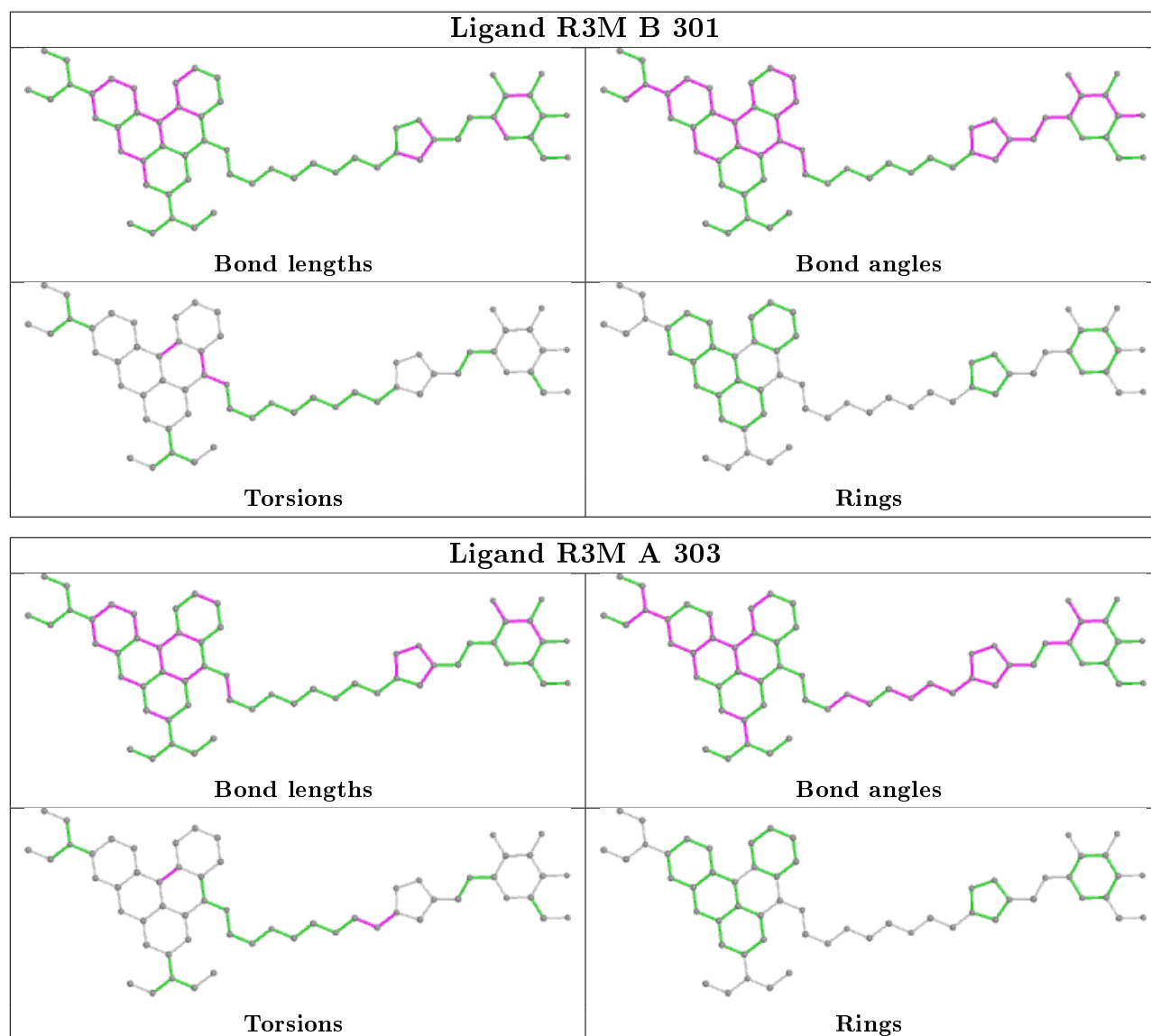
Mol	Chain	Res	Type	Atoms
4	A	303	R3M	C8-C9-N3T-C4T
4	B	301	R3M	O7P-C7P-O1-C2
4	A	303	R3M	O7-C8-C9-N3T
4	B	301	R3M	C1P-C2P-C4B-C2A
4	B	301	R3M	C2P-C1P-C7P-O1
4	A	303	R3M	C3P-C2P-C4B-C1C
4	A	303	R3M	C1P-C2P-C4B-C1C
4	B	301	R3M	C6P-C1P-C7P-O1

There are no ring outliers.

1 monomer is involved in 1 short contact:

Mol	Chain	Res	Type	Clashes	Symm-Clashes
4	A	303	R3M	1	0

The following is a two-dimensional graphical depiction of Mogul quality analysis of bond lengths, bond angles, torsion angles, and ring geometry for all instances of the Ligand of Interest. In addition, ligands with molecular weight > 250 and outliers as shown on the validation Tables will also be included. For torsion angles, if less than 5% of the Mogul distribution of torsion angles is within 10 degrees of the torsion angle in question, then that torsion angle is considered an outlier. Any bond that is central to one or more torsion angles identified as an outlier by Mogul will be highlighted in the graph. For rings, the root-mean-square deviation (RMSD) between the ring in question and similar rings identified by Mogul is calculated over all ring torsion angles. If the average RMSD is greater than 60 degrees and the minimal RMSD between the ring in question and any Mogul-identified rings is also greater than 60 degrees, then that ring is considered an outlier. The outliers are highlighted in purple. The color gray indicates Mogul did not find sufficient equivalents in the CSD to analyse the geometry.



## 5.7 Other polymers

There are no such residues in this entry.

## 5.8 Polymer linkage issues

There are no chain breaks in this entry.



## 6 Fit of model and data

### 6.1 Protein, DNA and RNA chains

In the following table, the column labelled ‘#RSRZ> 2’ contains the number (and percentage) of RSRZ outliers, followed by percent RSRZ outliers for the chain as percentile scores relative to all X-ray entries and entries of similar resolution. The OWAB column contains the minimum, median, 95<sup>th</sup> percentile and maximum values of the occupancy-weighted average B-factor per residue. The column labelled ‘Q< 0.9’ lists the number of (and percentage) of residues with an average occupancy less than 0.9.

Mol	Chain	Analysed	<RSRZ>	#RSRZ>2	OWAB(Å <sup>2</sup> )	Q<0.9
1	A	220/237 (92%)	0.05	8 (3%) 42 42	6, 12, 31, 44	0
1	B	223/237 (94%)	0.35	17 (7%) 13 13	8, 16, 36, 52	0
All	All	443/474 (93%)	0.20	25 (5%) 24 22	6, 14, 32, 52	0

All (25) RSRZ outliers are listed below:

Mol	Chain	Res	Type	RSRZ
1	A	189	ALA	5.0
1	B	150	THR	4.5
1	B	69	ASN	4.5
1	A	19	ASP	4.3
1	B	189	ALA	4.2
1	B	19	ASP	4.0
1	B	205[A]	HIS	3.6
1	B	188	VAL	3.6
1	B	204	SER	3.4
1	A	83	ASN	3.4
1	B	44	ASN	2.9
1	A	149	GLY	2.6
1	A	80	ASP	2.5
1	B	151	ASP	2.4
1	B	82	ASP	2.4
1	A	123	THR	2.4
1	B	203	ASP	2.3
1	A	69	ASN	2.3
1	B	71	ASP	2.3
1	A	115	LEU	2.3
1	B	56	SER	2.2
1	B	208	ASP	2.1
1	B	182	TRP	2.1
1	B	164	SER	2.0

*Continued on next page...*

*Continued from previous page...*

Mol	Chain	Res	Type	RSRZ
1	B	149	GLY	2.0

## 6.2 Non-standard residues in protein, DNA, RNA chains [i](#)

There are no non-standard protein/DNA/RNA residues in this entry.

## 6.3 Carbohydrates [i](#)

There are no carbohydrates in this entry.

## 6.4 Ligands [i](#)

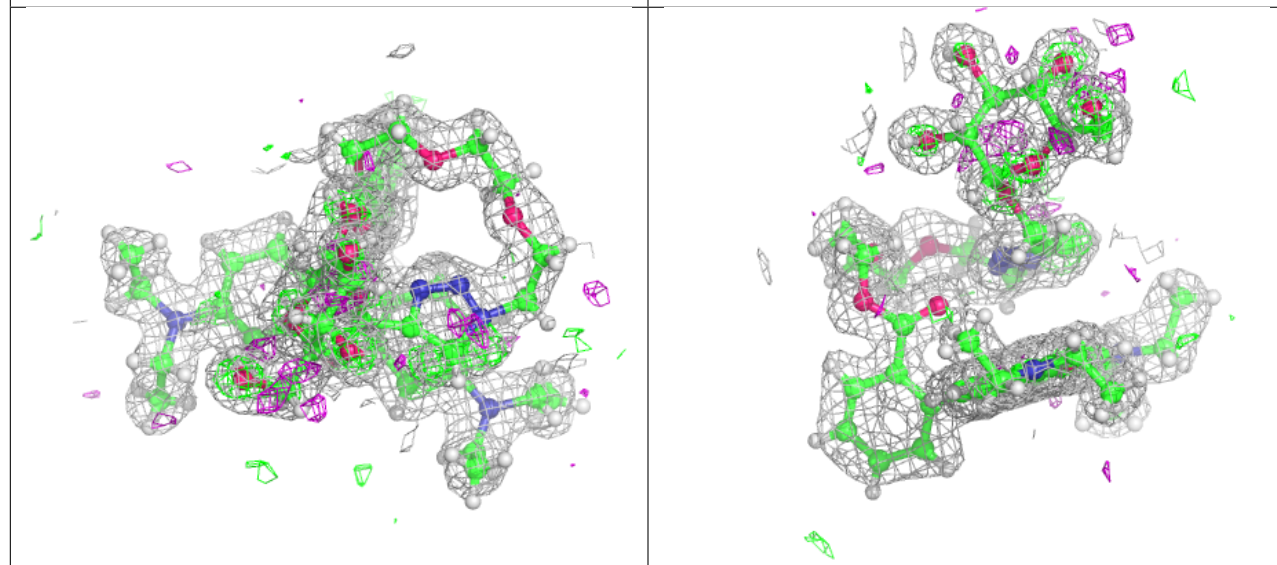
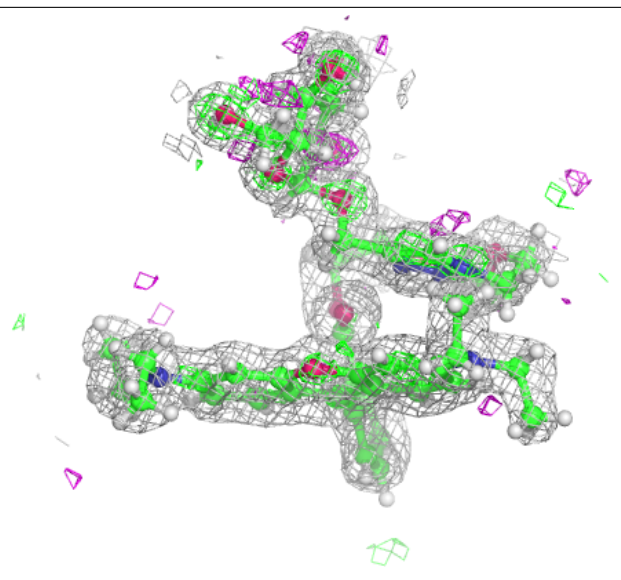
In the following table, the Atoms column lists the number of modelled atoms in the group and the number defined in the chemical component dictionary. The B-factors column lists the minimum, median, 95<sup>th</sup> percentile and maximum values of B factors of atoms in the group. The column labelled 'Q< 0.9' lists the number of atoms with occupancy less than 0.9.

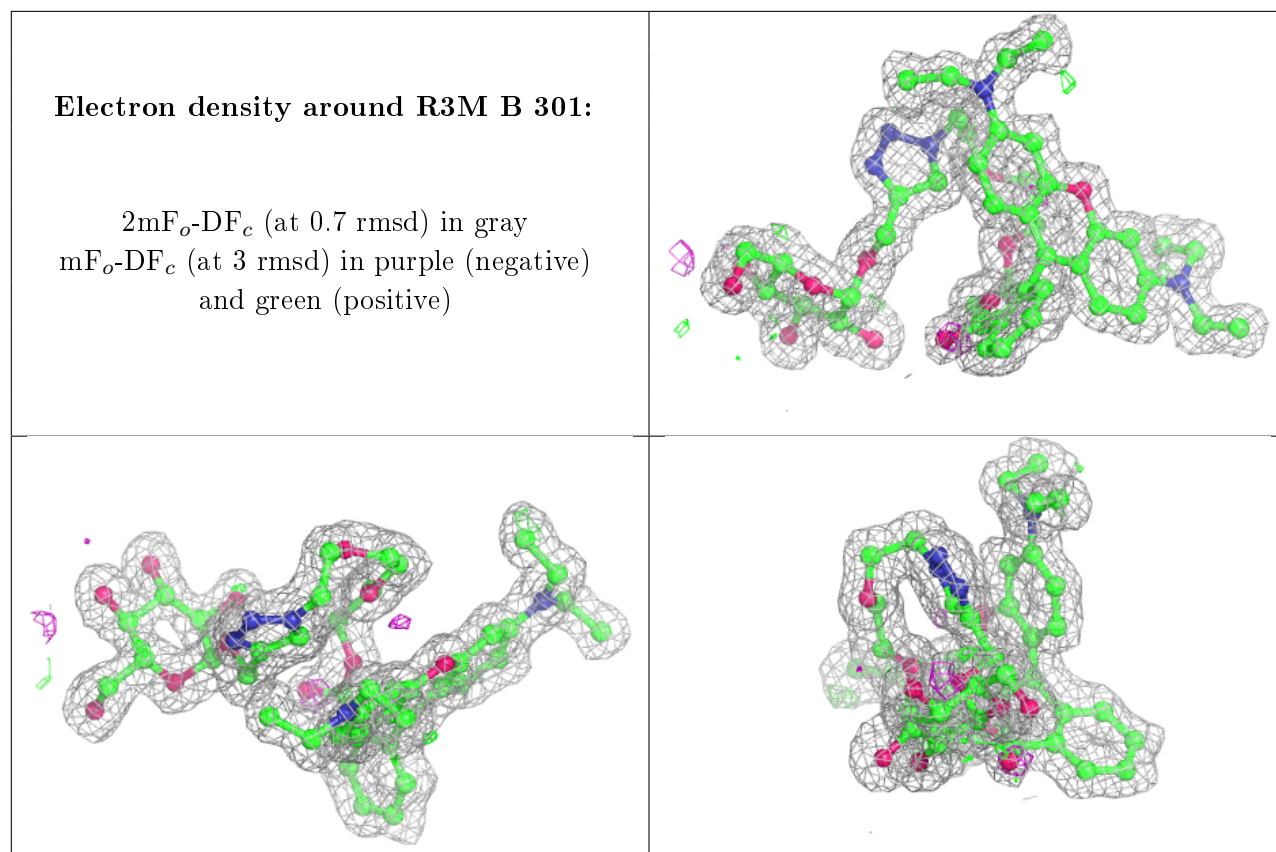
Mol	Type	Chain	Res	Atoms	RSCC	RSR	B-factors( $\text{\AA}^2$ )	Q<0.9
4	R3M	A	303	59/59	0.87	0.14	20,20,20,20	0
4	R3M	B	301	59/59	0.93	0.08	9,13,16,25	0
3	CA	B	302	1/1	0.95	0.07	13,13,13,13	0
2	MN	B	304	1/1	0.98	0.06	13,13,13,13	0
3	CA	B	303	1/1	0.99	0.06	14,14,14,14	0
2	MN	A	301	1/1	1.00	0.06	9,9,9,9	0
3	CA	A	302	1/1	1.00	0.06	8,8,8,8	0

The following is a graphical depiction of the model fit to experimental electron density of all instances of the Ligand of Interest. In addition, ligands with molecular weight > 250 and outliers as shown on the geometry validation Tables will also be included. Each fit is shown from different orientation to approximate a three-dimensional view.

**Electron density around R3M A 303:**

$2mF_o-DF_c$  (at 0.7 rmsd) in gray  
 $mF_o-DF_c$  (at 3 rmsd) in purple (negative)  
and green (positive)





## 6.5 Other polymers [i](#)

There are no such residues in this entry.