



wwPDB X-ray Structure Validation Summary Report ⓘ

Apr 12, 2021 – 12:11 pm BST

PDB ID : 6Z5O
Title : CRYSTAL STRUCTURE OF RAT PEROXISOMAL MULTIFUNCTIONAL ENZYME TYPE-1 (RPMFE1) COMPLEXED WITH COENZYME-A AND OXIDISED NICOTINAMIDE ADENINE DINUCLEOTIDE
Authors : Wierenga, R.K.; Sridhar, S.; Kiema, T.R.
Deposited on : 2020-05-27
Resolution : 1.70 Å(reported)

This is a wwPDB X-ray Structure Validation Summary Report for a publicly released PDB entry.

We welcome your comments at validation@mail.wwpdb.org

A user guide is available at

<https://www.wwpdb.org/validation/2017/XrayValidationReportHelp>

with specific help available everywhere you see the ⓘ symbol.

The following versions of software and data (see [references ⓘ](#)) were used in the production of this report:

MolProbity : 4.02b-467
Mogul : 1.8.5 (274361), CSD as541be (2020)
Xtriage (Phenix) : 1.13
EDS : 2.18
buster-report : 1.1.7 (2018)
Percentile statistics : 20191225.v01 (using entries in the PDB archive December 25th 2019)
Refmac : 5.8.0158
CCP4 : 7.0.044 (Gargrove)
Ideal geometry (proteins) : Engh & Huber (2001)
Ideal geometry (DNA, RNA) : Parkinson et al. (1996)
Validation Pipeline (wwPDB-VP) : 2.18

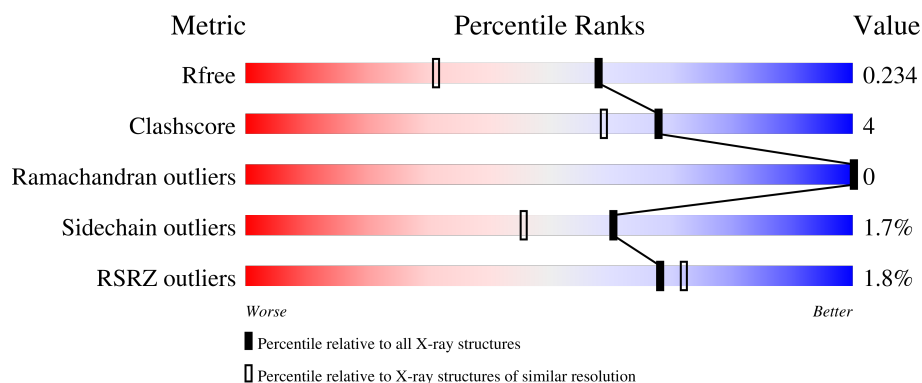
1 Overall quality at a glance

The following experimental techniques were used to determine the structure:

X-RAY DIFFRACTION


The reported resolution of this entry is 1.70 Å.

Percentile scores (ranging between 0-100) for global validation metrics of the entry are shown in the following graphic. The table shows the number of entries on which the scores are based.



Metric	Whole archive (#Entries)	Similar resolution (#Entries, resolution range(Å))
R_{free}	130704	4298 (1.70-1.70)
Clashscore	141614	4695 (1.70-1.70)
Ramachandran outliers	138981	4610 (1.70-1.70)
Sidechain outliers	138945	4610 (1.70-1.70)
RSRZ outliers	127900	4222 (1.70-1.70)

The table below summarises the geometric issues observed across the polymeric chains and their fit to the electron density. The red, orange, yellow and green segments of the lower bar indicate the fraction of residues that contain outliers for ≥ 3 , 2, 1 and 0 types of geometric quality criteria respectively. A grey segment represents the fraction of residues that are not modelled. The numeric value for each fraction is indicated below the corresponding segment, with a dot representing fractions $\leq 5\%$. The upper red bar (where present) indicates the fraction of residues that have poor fit to the electron density. The numeric value is given above the bar.

Mol	Chain	Length	Quality of chain
1	AAA	742	

2 Entry composition

There are 7 unique types of molecules in this entry. The entry contains 6480 atoms, of which 0 are hydrogens and 0 are deuteriums.

In the tables below, the ZeroOcc column contains the number of atoms modelled with zero occupancy, the AltConf column contains the number of residues with at least one atom in alternate conformation and the Trace column contains the number of residues modelled with at most 2 atoms.

- Molecule 1 is a protein called Peroxisomal bifunctional enzyme.

Mol	Chain	Residues	Atoms					ZeroOcc	AltConf	Trace
			Total	C	N	O	S			
1	AAA	716	5633	3617	972	1020	24	0	25	0

There are 20 discrepancies between the modelled and reference sequences:

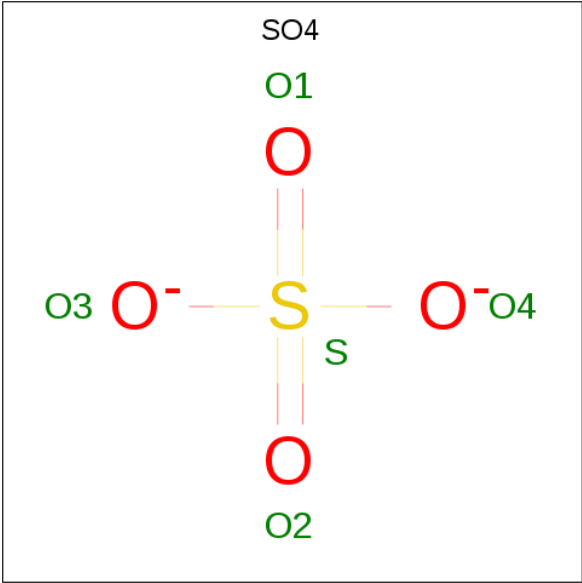
Chain	Residue	Modelled	Actual	Comment	Reference
AAA	-19	MET	-	initiating methionine	UNP P07896
AAA	-18	GLY	-	expression tag	UNP P07896
AAA	-17	SER	-	expression tag	UNP P07896
AAA	-16	SER	-	expression tag	UNP P07896
AAA	-15	HIS	-	expression tag	UNP P07896
AAA	-14	HIS	-	expression tag	UNP P07896
AAA	-13	HIS	-	expression tag	UNP P07896
AAA	-12	HIS	-	expression tag	UNP P07896
AAA	-11	HIS	-	expression tag	UNP P07896
AAA	-10	HIS	-	expression tag	UNP P07896
AAA	-9	SER	-	expression tag	UNP P07896
AAA	-8	SER	-	expression tag	UNP P07896
AAA	-7	GLY	-	expression tag	UNP P07896
AAA	-6	LEU	-	expression tag	UNP P07896
AAA	-5	VAL	-	expression tag	UNP P07896
AAA	-4	PRO	-	expression tag	UNP P07896
AAA	-3	ARG	-	expression tag	UNP P07896
AAA	-2	GLY	-	expression tag	UNP P07896
AAA	-1	SER	-	expression tag	UNP P07896
AAA	0	HIS	-	expression tag	UNP P07896

- Molecule 2 is NICOTINAMIDE-ADENINE-DINUCLEOTIDE (three-letter code: NAD) (formula: C₂₁H₂₇N₇O₁₄P₂) (labeled as "Ligand of Interest" by depositor).



Mol	Chain	Residues	Atoms					ZeroOcc	AltConf
2	AAA	1	Total	C	N	O	P	0	0
			44	21	7	14	2		

- Molecule 3 is SULFATE ION (three-letter code: SO4) (formula: O₄S).



Mol	Chain	Residues	Atoms			ZeroOcc	AltConf
3	AAA	1	Total	O	S	0	0
			5	4	1		
3	AAA	1	Total	O	S	0	0
			5	4	1		
3	AAA	1	Total	O	S	0	0
			5	4	1		

Continued on next page...

Continued from previous page...

Mol	Chain	Residues	Atoms			ZeroOcc	AltConf
3	AAA	1	Total	O	S	0	0
			5	4	1		
3	AAA	1	Total	O	S	0	0
			5	4	1		

- Molecule 4 is GLYCEROL (three-letter code: GOL) (formula: C₃H₈O₃).



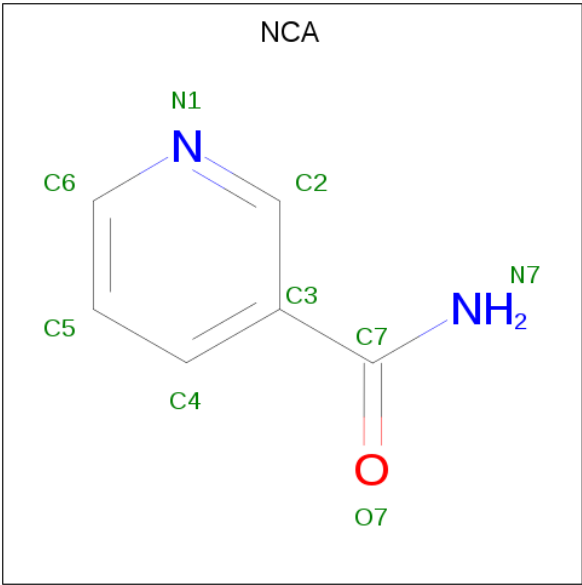
Mol	Chain	Residues	Atoms			ZeroOcc	AltConf
4	AAA	1	Total	C	O	0	0
			6	3	3		

- Molecule 5 is COENZYME A (three-letter code: COA) (formula: C₂₁H₃₆N₇O₁₆P₃S) (labeled as "Ligand of Interest" by depositor).



Mol	Chain	Residues	Atoms						ZeroOcc	AltConf
5	AAA	1	Total	C	N	O	P	S	0	1
			96	42	14	32	6	2		

- Molecule 6 is NICOTINAMIDE (three-letter code: NCA) (formula: C₆H₆N₂O).



Mol	Chain	Residues	Atoms				ZeroOcc	AltConf
6	AAA	1	Total	C	N	O	0	0
			9	6	2	1		

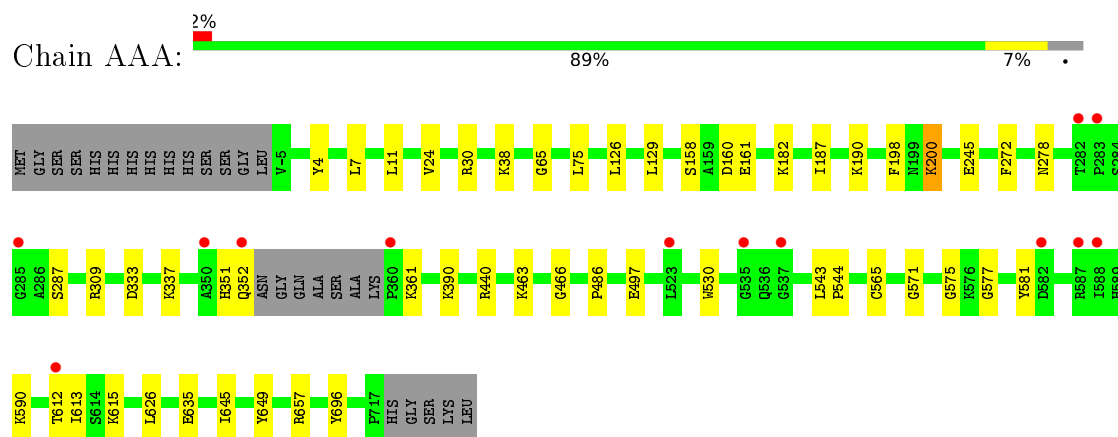
- Molecule 7 is water.

Mol	Chain	Residues	Atoms		ZeroOcc	AltConf
7	AAA	667	Total 667	O 667	0	0

3 Residue-property plots [i](#)

These plots are drawn for all protein, RNA, DNA and oligosaccharide chains in the entry. The first graphic for a chain summarises the proportions of the various outlier classes displayed in the second graphic. The second graphic shows the sequence view annotated by issues in geometry and electron density. Residues are color-coded according to the number of geometric quality criteria for which they contain at least one outlier: green = 0, yellow = 1, orange = 2 and red = 3 or more. A red dot above a residue indicates a poor fit to the electron density ($RSRZ > 2$). Stretches of 2 or more consecutive residues without any outlier are shown as a green connector. Residues present in the sample, but not in the model, are shown in grey.

- Molecule 1: Peroxisomal bifunctional enzyme



4 Data and refinement statistics

Property	Value	Source
Space group	P 21 21 21	Depositor
Cell constants a, b, c, α , β , γ	62.65Å 106.66Å 114.51Å 90.00° 90.00° 90.00°	Depositor
Resolution (Å)	48.90 – 1.70 48.86 – 1.70	Depositor EDS
% Data completeness (in resolution range)	94.8 (48.90-1.70) 94.8 (48.86-1.70)	Depositor EDS
R_{merge}	0.13	Depositor
R_{sym}	(Not available)	Depositor
$\langle I/\sigma(I) \rangle$ ¹	2.28 (at 1.70Å)	Xtriage
Refinement program	REFMAC 5.8.0258	Depositor
R, R_{free}	0.189 , 0.233 0.190 , 0.234	Depositor DCC
R_{free} test set	4190 reflections (5.20%)	wwPDB-VP
Wilson B-factor (Å ²)	21.4	Xtriage
Anisotropy	0.023	Xtriage
Bulk solvent k_{sol} (e/Å ³), B_{sol} (Å ²)	0.36 , 42.4	EDS
L-test for twinning ²	$\langle L \rangle = 0.50$, $\langle L^2 \rangle = 0.33$	Xtriage
Estimated twinning fraction	No twinning to report.	Xtriage
F_o, F_c correlation	0.96	EDS
Total number of atoms	6480	wwPDB-VP
Average B, all atoms (Å ²)	25.0	wwPDB-VP

Xtriage's analysis on translational NCS is as follows: *The largest off-origin peak in the Patterson function is 5.34% of the height of the origin peak. No significant pseudotranslation is detected.*

¹Intensities estimated from amplitudes.

²Theoretical values of $\langle |L| \rangle$, $\langle L^2 \rangle$ for acentric reflections are 0.5, 0.333 respectively for untwinned datasets, and 0.375, 0.2 for perfectly twinned datasets.

5 Model quality [i](#)

5.1 Standard geometry [i](#)

Bond lengths and bond angles in the following residue types are not validated in this section: NCA, COA, SO4, NAD, GOL

The Z score for a bond length (or angle) is the number of standard deviations the observed value is removed from the expected value. A bond length (or angle) with $|Z| > 5$ is considered an outlier worth inspection. RMSZ is the root-mean-square of all Z scores of the bond lengths (or angles).

Mol	Chain	Bond lengths		Bond angles	
		RMSZ	$\# Z > 5$	RMSZ	$\# Z > 5$
1	AAA	0.44	0/5838	0.80	5/7901 (0.1%)

There are no bond length outliers.

All (5) bond angle outliers are listed below:

Mol	Chain	Res	Type	Atoms	Z	Observed(°)	Ideal(°)
1	AAA	361	LYS	CB-CA-C	6.61	123.61	110.40
1	AAA	649[A]	TYR	CA-CB-CG	-5.87	102.24	113.40
1	AAA	649[B]	TYR	CA-CB-CG	-5.87	102.24	113.40
1	AAA	309	ARG	CG-CD-NE	-5.28	100.71	111.80
1	AAA	657	ARG	CG-CD-NE	-5.25	100.78	111.80

There are no chirality outliers.

There are no planarity outliers.

5.2 Too-close contacts [i](#)

In the following table, the Non-H and H(model) columns list the number of non-hydrogen atoms and hydrogen atoms in the chain respectively. The H(added) column lists the number of hydrogen atoms added and optimized by MolProbity. The Clashes column lists the number of clashes within the asymmetric unit, whereas Symm-Clashes lists symmetry-related clashes.

Mol	Chain	Non-H	H(model)	H(added)	Clashes	Symm-Clashes
1	AAA	5633	0	5799	31	0
2	AAA	44	0	26	0	0
3	AAA	25	0	0	0	0
4	AAA	6	0	8	0	0
5	AAA	96	0	64	14	0
6	AAA	9	0	6	0	0

Continued on next page...

Continued from previous page...

Mol	Chain	Non-H	H(model)	H(added)	Clashes	Symm-Clashes
7	AAA	667	0	0	11	0
All	All	6480	0	5903	44	0

The all-atom clashscore is defined as the number of clashes found per 1000 atoms (including hydrogen atoms). The all-atom clashscore for this structure is 4.

The worst 5 of 44 close contacts within the same asymmetric unit are listed below, sorted by their clash magnitude.

Atom-1	Atom-2	Interatomic distance (Å)	Clash overlap (Å)
5:AAA:808[A]:COA:H72	5:AAA:808[A]:COA:C3P	1.54	1.27
5:AAA:808[A]:COA:H72	5:AAA:808[A]:COA:C2P	1.77	1.14
5:AAA:808[A]:COA:H31	5:AAA:808[A]:COA:C7P	1.69	1.13
5:AAA:808[A]:COA:H72	5:AAA:808[A]:COA:H31	1.17	1.03
5:AAA:808[A]:COA:H72	5:AAA:808[A]:COA:H22	1.48	0.94

There are no symmetry-related clashes.

5.3 Torsion angles [i](#)

5.3.1 Protein backbone [i](#)

In the following table, the Percentiles column shows the percent Ramachandran outliers of the chain as a percentile score with respect to all X-ray entries followed by that with respect to entries of similar resolution.

The Analysed column shows the number of residues for which the backbone conformation was analysed, and the total number of residues.

Mol	Chain	Analysed	Favoured	Allowed	Outliers	Percentiles
1	AAA	736/742 (99%)	719 (98%)	17 (2%)	0	100 100

There are no Ramachandran outliers to report.

5.3.2 Protein sidechains [i](#)

In the following table, the Percentiles column shows the percent sidechain outliers of the chain as a percentile score with respect to all X-ray entries followed by that with respect to entries of similar resolution.

The Analysed column shows the number of residues for which the sidechain conformation was

analysed, and the total number of residues.

Mol	Chain	Analysed	Rotameric	Outliers	Percentiles
1	AAA	614/609 (101%)	602 (98%)	12 (2%)	55 38

5 of 12 residues with a non-rotameric sidechain are listed below:

Mol	Chain	Res	Type
1	AAA	486	PRO
1	AAA	590	LYS
1	AAA	645	ILE
1	AAA	612	THR
1	AAA	287[A]	SER

Sometimes sidechains can be flipped to improve hydrogen bonding and reduce clashes. There are no such sidechains identified.

5.3.3 RNA ⓘ

There are no RNA molecules in this entry.

5.4 Non-standard residues in protein, DNA, RNA chains ⓘ

There are no non-standard protein/DNA/RNA residues in this entry.

5.5 Carbohydrates ⓘ

There are no monosaccharides in this entry.

5.6 Ligand geometry ⓘ

10 ligands are modelled in this entry.

In the following table, the Counts columns list the number of bonds (or angles) for which Mogul statistics could be retrieved, the number of bonds (or angles) that are observed in the model and the number of bonds (or angles) that are defined in the Chemical Component Dictionary. The Link column lists molecule types, if any, to which the group is linked. The Z score for a bond length (or angle) is the number of standard deviations the observed value is removed from the expected value. A bond length (or angle) with $|Z| > 2$ is considered an outlier worth inspection. RMSZ is the root-mean-square of all Z scores of the bond lengths (or angles).

Mol	Type	Chain	Res	Link	Bond lengths			Bond angles		
					Counts	RMSZ	# Z > 2	Counts	RMSZ	# Z > 2
4	GOL	AAA	807	-	5,5,5	0.17	0	5,5,5	0.64	0
3	SO4	AAA	802	-	4,4,4	0.26	0	6,6,6	0.27	0
5	COA	AAA	808[B]	-	41,50,50	0.58	0	52,75,75	0.68	1 (1%)
3	SO4	AAA	803	-	4,4,4	0.37	0	6,6,6	0.04	0
2	NAD	AAA	801	-	42,48,48	1.04	2 (4%)	50,73,73	0.87	2 (4%)
3	SO4	AAA	806	-	4,4,4	0.36	0	6,6,6	0.07	0
5	COA	AAA	808[A]	-	41,50,50	0.58	0	52,75,75	0.66	1 (1%)
3	SO4	AAA	805	-	4,4,4	0.37	0	6,6,6	0.10	0
3	SO4	AAA	804	-	4,4,4	0.35	0	6,6,6	0.09	0
6	NCA	AAA	809	-	9,9,9	1.33	1 (11%)	11,11,11	1.95	2 (18%)

In the following table, the Chirals column lists the number of chiral outliers, the number of chiral centers analysed, the number of these observed in the model and the number defined in the Chemical Component Dictionary. Similar counts are reported in the Torsion and Rings columns. '-' means no outliers of that kind were identified.

Mol	Type	Chain	Res	Link	Chirals	Torsions	Rings
4	GOL	AAA	807	-	-	2/4/4/4	-
5	COA	AAA	808[B]	-	-	9/44/64/64	0/3/3/3
2	NAD	AAA	801	-	-	5/26/62/62	0/5/5/5
5	COA	AAA	808[A]	-	-	16/44/64/64	0/3/3/3
6	NCA	AAA	809	-	-	0/4/4/4	0/1/1/1

All (3) bond length outliers are listed below:

Mol	Chain	Res	Type	Atoms	Z	Observed(Å)	Ideal(Å)
2	AAA	801	NAD	C2N-N1N	4.82	1.40	1.35
2	AAA	801	NAD	O4D-C1D	2.35	1.44	1.41
6	AAA	809	NCA	C5-C6	2.11	1.43	1.37

The worst 5 of 6 bond angle outliers are listed below:

Mol	Chain	Res	Type	Atoms	Z	Observed(°)	Ideal(°)
6	AAA	809	NCA	O7-C7-C3	4.36	124.86	119.63
6	AAA	809	NCA	O7-C7-N7	-3.34	117.83	122.58
2	AAA	801	NAD	O4B-C1B-C2B	-2.54	103.22	106.93
5	AAA	808[B]	COA	C5A-C6A-N6A	2.12	123.57	120.35
5	AAA	808[A]	COA	C5A-C6A-N6A	2.09	123.53	120.35

There are no chirality outliers.

5 of 32 torsion outliers are listed below:

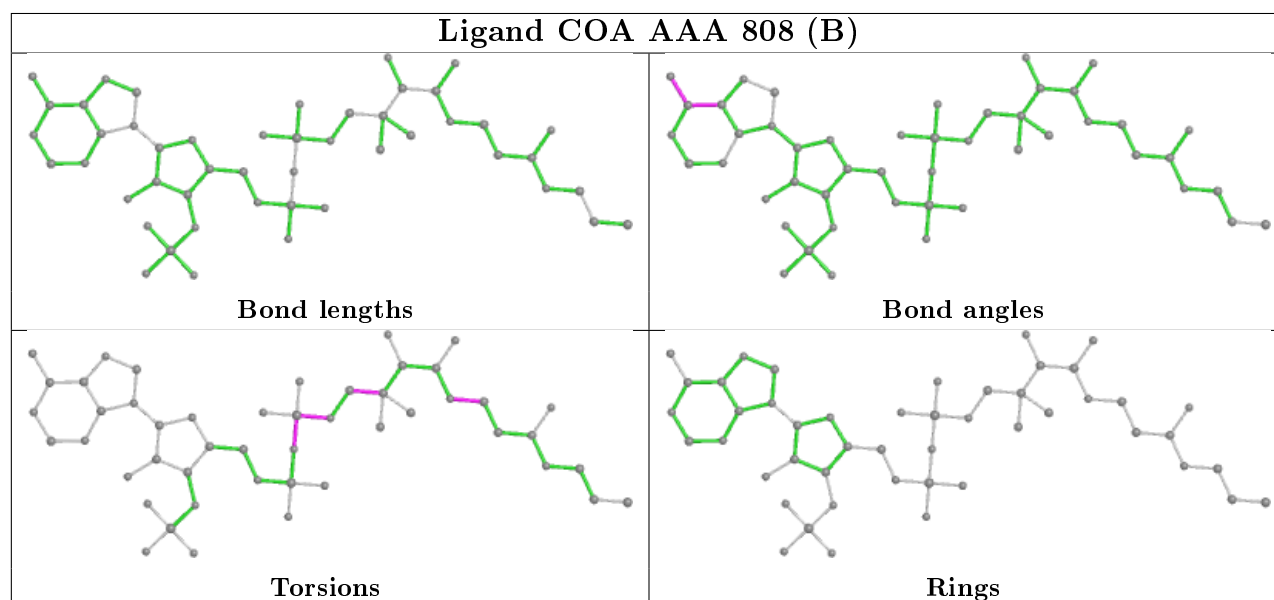
Mol	Chain	Res	Type	Atoms
2	AAA	801	NAD	O4D-C1D-N1N-C2N
2	AAA	801	NAD	O4D-C1D-N1N-C6N
2	AAA	801	NAD	C2D-C1D-N1N-C2N
2	AAA	801	NAD	C2D-C1D-N1N-C6N
4	AAA	807	GOL	C1-C2-C3-O3

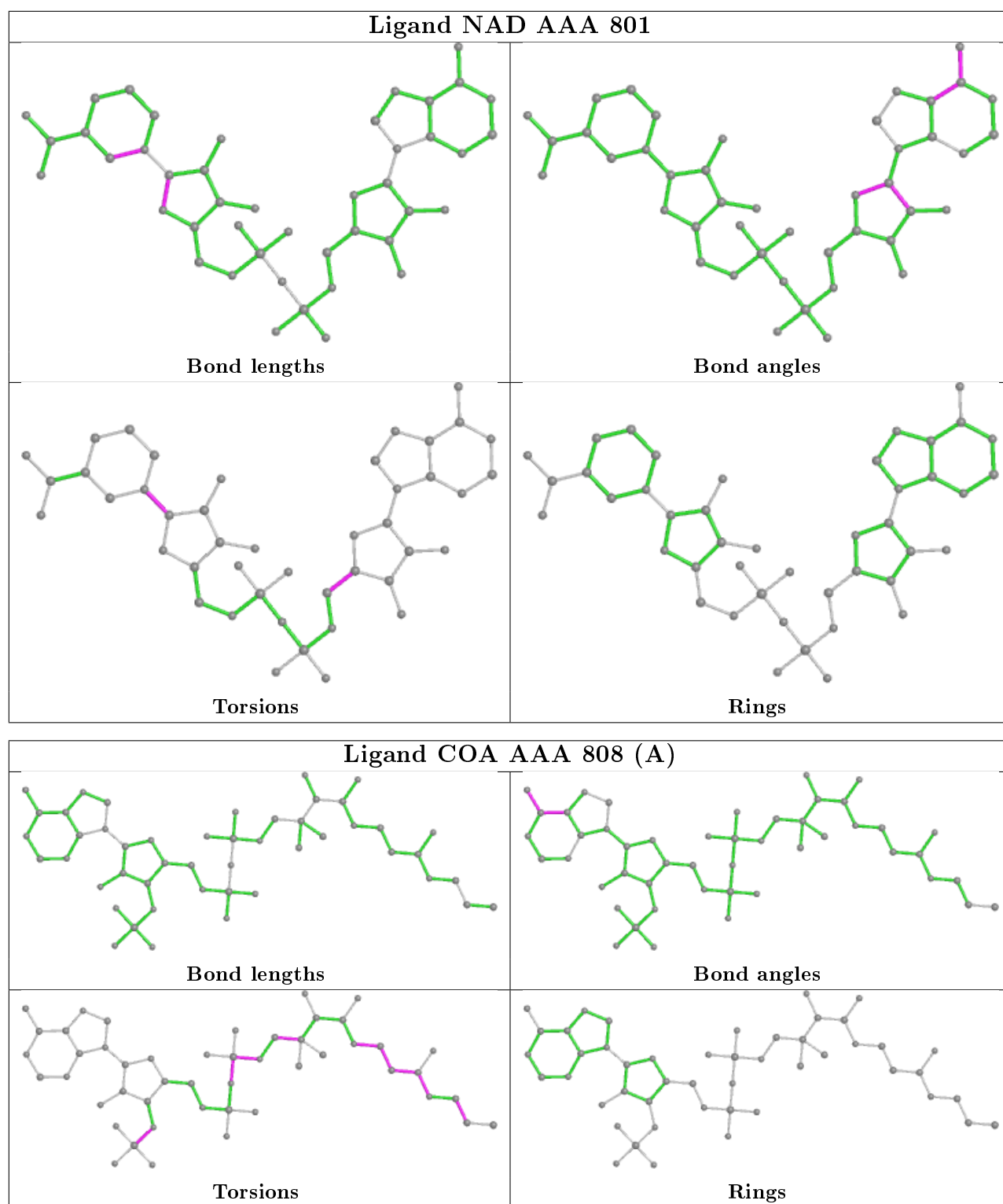
There are no ring outliers.

2 monomers are involved in 14 short contacts:

Mol	Chain	Res	Type	Clashes	Symm-Clashes
5	AAA	808[B]	COA	2	0
5	AAA	808[A]	COA	12	0

The following is a two-dimensional graphical depiction of Mogul quality analysis of bond lengths, bond angles, torsion angles, and ring geometry for all instances of the Ligand of Interest. In addition, ligands with molecular weight > 250 and outliers as shown on the validation Tables will also be included. For torsion angles, if less than 5% of the Mogul distribution of torsion angles is within 10 degrees of the torsion angle in question, then that torsion angle is considered an outlier. Any bond that is central to one or more torsion angles identified as an outlier by Mogul will be highlighted in the graph. For rings, the root-mean-square deviation (RMSD) between the ring in question and similar rings identified by Mogul is calculated over all ring torsion angles. If the average RMSD is greater than 60 degrees and the minimal RMSD between the ring in question and any Mogul-identified rings is also greater than 60 degrees, then that ring is considered an outlier. The outliers are highlighted in purple. The color gray indicates Mogul did not find sufficient equivalents in the CSD to analyse the geometry.





5.7 Other polymers ⓘ

There are no such residues in this entry.

5.8 Polymer linkage issues ⓘ

There are no chain breaks in this entry.

6 Fit of model and data [i](#)

6.1 Protein, DNA and RNA chains [i](#)

In the following table, the column labelled ‘#RSRZ> 2’ contains the number (and percentage) of RSRZ outliers, followed by percent RSRZ outliers for the chain as percentile scores relative to all X-ray entries and entries of similar resolution. The OWAB column contains the minimum, median, 95th percentile and maximum values of the occupancy-weighted average B-factor per residue. The column labelled ‘Q< 0.9’ lists the number of (and percentage) of residues with an average occupancy less than 0.9.

Mol	Chain	Analysed	<RSRZ>	#RSRZ>2	OWAB(Å ²)	Q<0.9
1	AAA	716/742 (96%)	-0.13	13 (1%) 68 72	12, 20, 40, 85	0

The worst 5 of 13 RSRZ outliers are listed below:

Mol	Chain	Res	Type	RSRZ
1	AAA	352	GLN	4.2
1	AAA	285	GLY	3.9
1	AAA	588	ILE	3.7
1	AAA	587	ARG	3.5
1	AAA	283	PRO	3.1

6.2 Non-standard residues in protein, DNA, RNA chains [i](#)

There are no non-standard protein/DNA/RNA residues in this entry.

6.3 Carbohydrates [i](#)

There are no monosaccharides in this entry.

6.4 Ligands [i](#)

In the following table, the Atoms column lists the number of modelled atoms in the group and the number defined in the chemical component dictionary. The B-factors column lists the minimum, median, 95th percentile and maximum values of B factors of atoms in the group. The column labelled ‘Q< 0.9’ lists the number of atoms with occupancy less than 0.9.

Mol	Type	Chain	Res	Atoms	RSCC	RSR	B-factors(Å ²)	Q<0.9
3	SO4	AAA	804	5/5	0.70	0.22	83,84,97,105	0
5	COA	AAA	808[A]	48/48	0.76	0.19	36,51,69,77	48

Continued on next page...

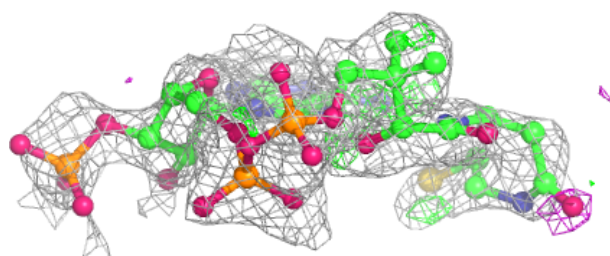
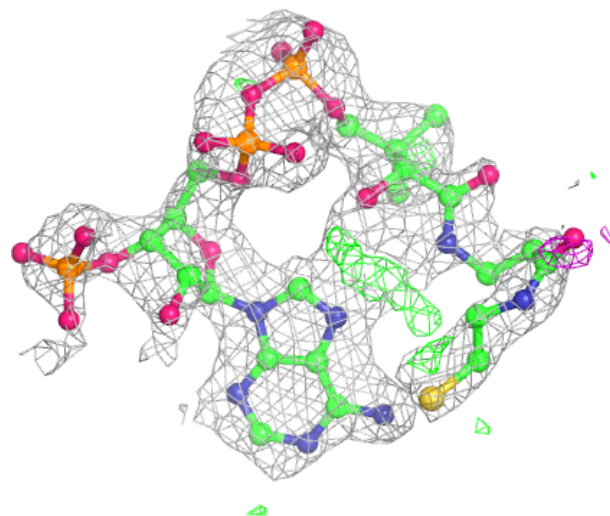
Continued from previous page...

Mol	Type	Chain	Res	Atoms	RSCC	RSR	B-factors(\AA^2)	Q<0.9
5	COA	AAA	808[B]	48/48	0.76	0.19	40,104,163,167	48
3	SO4	AAA	805	5/5	0.77	0.28	98,101,105,109	0
4	GOL	AAA	807	6/6	0.86	0.14	28,37,44,45	0
3	SO4	AAA	806	5/5	0.89	0.13	74,80,83,86	0
3	SO4	AAA	803	5/5	0.90	0.12	87,88,89,96	0
6	NCA	AAA	809	9/9	0.95	0.08	20,24,26,29	0
2	NAD	AAA	801	44/44	0.96	0.07	16,21,27,28	0
3	SO4	AAA	802	5/5	0.96	0.16	33,33,36,40	0

The following is a graphical depiction of the model fit to experimental electron density of all instances of the Ligand of Interest. In addition, ligands with molecular weight > 250 and outliers as shown on the geometry validation Tables will also be included. Each fit is shown from different orientation to approximate a three-dimensional view.

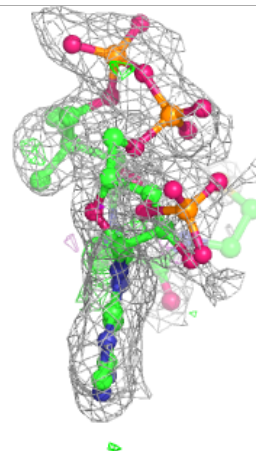
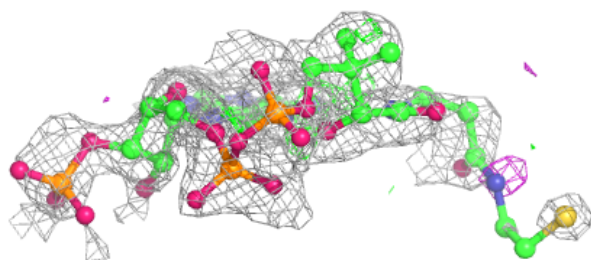
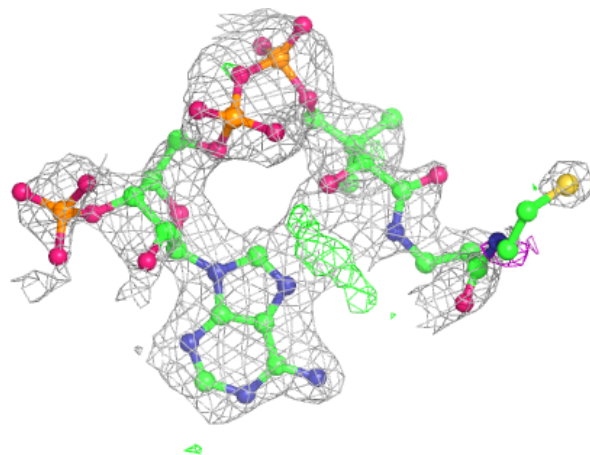
Electron density around COA AAA 808 (A):

2mF_o-DF_c (at 0.7 rmsd) in gray
mF_o-DF_c (at 3 rmsd) in purple (negative)
and green (positive)



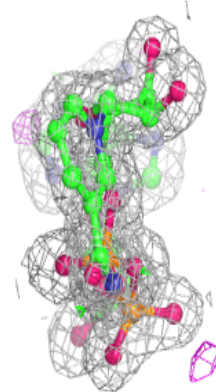
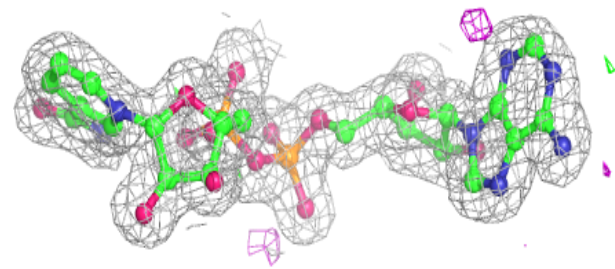
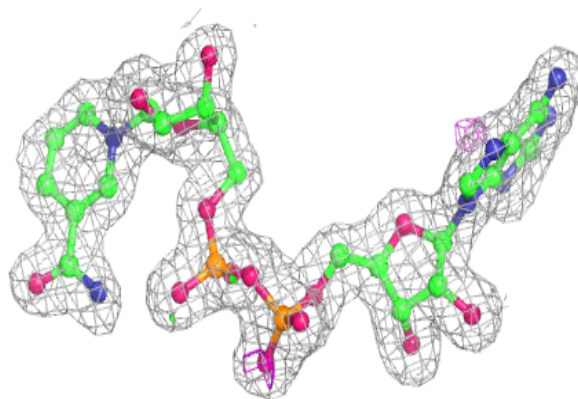
Electron density around COA AAA 808 (B):

$2mF_o-DF_c$ (at 0.7 rmsd) in gray
 mF_o-DF_c (at 3 rmsd) in purple (negative)
and green (positive)



Electron density around NAD AAA 801:

$2mF_o-DF_c$ (at 0.7 rmsd) in gray
 mF_o-DF_c (at 3 rmsd) in purple (negative)
and green (positive)



6.5 Other polymers [i](#)

There are no such residues in this entry.