



Full wwPDB X-ray Structure Validation Report ⓘ

Oct 31, 2021 – 03:15 AM EDT

PDB ID : 2Z8C
Title : Phosphorylated insulin receptor tyrosine kinase in complex with (4-{[5-carbamoyl-4-(3-methylanilino)pyrimidin-2-yl]amino}phenyl)acetic acid
Authors : Katayama, N.; Kurihara, H.
Deposited on : 2007-09-05
Resolution : 3.25 Å(reported)

This is a Full wwPDB X-ray Structure Validation Report for a publicly released PDB entry.

We welcome your comments at validation@mail.wwpdb.org

A user guide is available at

<https://www.wwpdb.org/validation/2017/XrayValidationReportHelp>

with specific help available everywhere you see the ⓘ symbol.

The following versions of software and data (see [references ⓘ](#)) were used in the production of this report:

MolProbity : 4.02b-467
Mogul : 1.8.5 (274361), CSD as541be (2020)
Xtriage (Phenix) : 1.13
EDS : 2.23.2
buster-report : 1.1.7 (2018)
Percentile statistics : 20191225.v01 (using entries in the PDB archive December 25th 2019)
Refmac : 5.8.0158
CCP4 : 7.0.044 (Gargrove)
Ideal geometry (proteins) : Engh & Huber (2001)
Ideal geometry (DNA, RNA) : Parkinson et al. (1996)
Validation Pipeline (wwPDB-VP) : 2.23.2

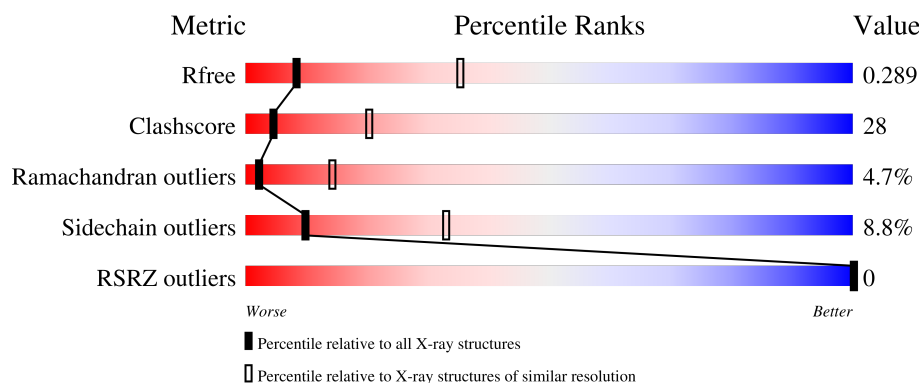
1 Overall quality at a glance

The following experimental techniques were used to determine the structure:

X-RAY DIFFRACTION


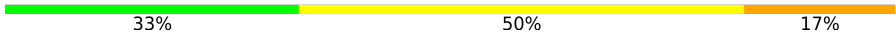
The reported resolution of this entry is 3.25 Å.

Percentile scores (ranging between 0-100) for global validation metrics of the entry are shown in the following graphic. The table shows the number of entries on which the scores are based.



Metric	Whole archive (#Entries)	Similar resolution (#Entries, resolution range(Å))
R_{free}	130704	1191 (3.30-3.22)
Clashscore	141614	1251 (3.30-3.22)
Ramachandran outliers	138981	1229 (3.30-3.22)
Sidechain outliers	138945	1228 (3.30-3.22)
RSRZ outliers	127900	1154 (3.30-3.22)

The table below summarises the geometric issues observed across the polymeric chains and their fit to the electron density. The red, orange, yellow and green segments of the lower bar indicate the fraction of residues that contain outliers for ≥ 3 , 2, 1 and 0 types of geometric quality criteria respectively. A grey segment represents the fraction of residues that are not modelled. The numeric value for each fraction is indicated below the corresponding segment, with a dot representing fractions $\leq 5\%$. The upper red bar (where present) indicates the fraction of residues that have poor fit to the electron density. The numeric value is given above the bar.

Mol	Chain	Length	Quality of chain
1	A	303	
2	B	6	

The following table lists non-polymeric compounds, carbohydrate monomers and non-standard residues in protein, DNA, RNA chains that are outliers for geometric or electron-density-fit criteria:

Mol	Type	Chain	Res	Chirality	Geometry	Clashes	Electron density
1	PTR	A	1163	-	-	X	-

2 Entry composition [i](#)

There are 3 unique types of molecules in this entry. The entry contains 2466 atoms, of which 0 are hydrogens and 0 are deuteriums.

In the tables below, the ZeroOcc column contains the number of atoms modelled with zero occupancy, the AltConf column contains the number of residues with at least one atom in alternate conformation and the Trace column contains the number of residues modelled with at most 2 atoms.

- Molecule 1 is a protein called Insulin receptor.

Mol	Chain	Residues	Atoms						ZeroOcc	AltConf	Trace
1	A	300	Total	C	N	O	P	S	0	0	0
			2387	1507	408	450	3	19			

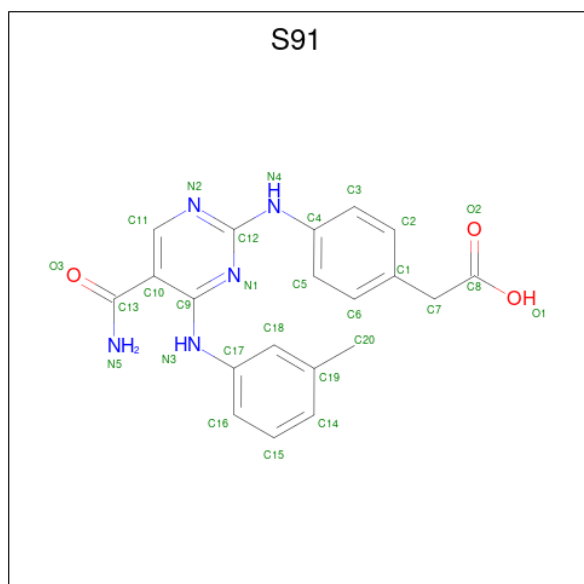
There are 2 discrepancies between the modelled and reference sequences:

Chain	Residue	Modelled	Actual	Comment	Reference
A	981	SER	CYS	engineered mutation	UNP P06213
A	984	PHE	TYR	engineered mutation	UNP P06213

- Molecule 2 is a protein called 6-mer peptide from Insulin receptor substrate 1.

Mol	Chain	Residues	Atoms					ZeroOcc	AltConf	Trace
2	B	6	Total	C	N	O	S	0	0	0
			51	30	7	12	2			

- Molecule 3 is [4-({5-(AMINOCARBONYL)-4-[(3-METHYLPHENYL)AMINO]PYRIMIDIN-2-YL}AMINO)PHENYL]ACETIC ACID (three-letter code: S91) (formula: C₂₀H₁₉N₅O₃).

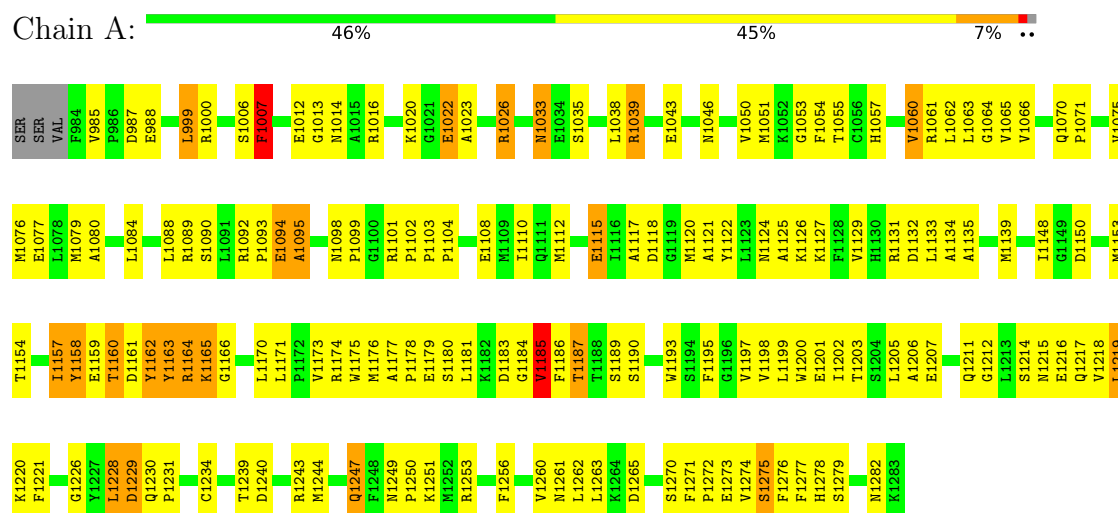


Mol	Chain	Residues	Atoms				ZeroOcc	AltConf
3	A	1	Total	C	N	O	0	0
			28	20	5	3		

3 Residue-property plots

These plots are drawn for all protein, RNA, DNA and oligosaccharide chains in the entry. The first graphic for a chain summarises the proportions of the various outlier classes displayed in the second graphic. The second graphic shows the sequence view annotated by issues in geometry and electron density. Residues are color-coded according to the number of geometric quality criteria for which they contain at least one outlier: green = 0, yellow = 1, orange = 2 and red = 3 or more. A red dot above a residue indicates a poor fit to the electron density ($RSRZ > 2$). Stretches of 2 or more consecutive residues without any outlier are shown as a green connector. Residues present in the sample, but not in the model, are shown in grey.

• Molecule 1: Insulin receptor



• Molecule 2: 6-mer peptide from Insulin receptor substrate 1



4 Data and refinement statistics

Property	Value	Source
Space group	P 32 2 1	Depositor
Cell constants a, b, c, α , β , γ	71.54Å 71.54Å 133.85Å 90.00° 90.00° 120.00°	Depositor
Resolution (Å)	56.23 – 3.25 56.22 – 3.00	Depositor EDS
% Data completeness (in resolution range)	96.3 (56.23-3.25) 93.9 (56.22-3.00)	Depositor EDS
R_{merge}	0.09	Depositor
R_{sym}	(Not available)	Depositor
$\langle I/\sigma(I) \rangle$ ¹	2.28 (at 3.01Å)	Xtriage
Refinement program	CNX 2002	Depositor
R, R_{free}	0.217 , 0.292 0.209 , 0.289	Depositor DCC
R_{free} test set	832 reflections (10.57%)	wwPDB-VP
Wilson B-factor (Å ²)	82.5	Xtriage
Anisotropy	0.087	Xtriage
Bulk solvent k_{sol} (e/Å ³), B_{sol} (Å ²)	0.27 , 38.5	EDS
L-test for twinning ²	$\langle L \rangle = 0.49$, $\langle L^2 \rangle = 0.31$	Xtriage
Estimated twinning fraction	0.043 for -h,-k,l	Xtriage
F_o, F_c correlation	0.93	EDS
Total number of atoms	2466	wwPDB-VP
Average B, all atoms (Å ²)	60.0	wwPDB-VP

Xtriage's analysis on translational NCS is as follows: *The largest off-origin peak in the Patterson function is 7.29% of the height of the origin peak. No significant pseudotranslation is detected.*

¹Intensities estimated from amplitudes.

²Theoretical values of $\langle |L| \rangle$, $\langle L^2 \rangle$ for acentric reflections are 0.5, 0.333 respectively for untwinned datasets, and 0.375, 0.2 for perfectly twinned datasets.

5 Model quality [i](#)

5.1 Standard geometry [i](#)

Bond lengths and bond angles in the following residue types are not validated in this section: S91, PTR

The Z score for a bond length (or angle) is the number of standard deviations the observed value is removed from the expected value. A bond length (or angle) with $|Z| > 5$ is considered an outlier worth inspection. RMSZ is the root-mean-square of all Z scores of the bond lengths (or angles).

Mol	Chain	Bond lengths		Bond angles	
		RMSZ	$\# Z > 5$	RMSZ	$\# Z > 5$
1	A	0.47	1/2389 (0.0%)	0.74	3/3227 (0.1%)
2	B	0.63	0/51	0.61	0/65
All	All	0.47	1/2440 (0.0%)	0.73	3/3292 (0.1%)

All (1) bond length outliers are listed below:

Mol	Chain	Res	Type	Atoms	Z	Observed(Å)	Ideal(Å)
1	A	1094	GLU	CD-OE2	6.85	1.33	1.25

All (3) bond angle outliers are listed below:

Mol	Chain	Res	Type	Atoms	Z	Observed(°)	Ideal(°)
1	A	1164	ARG	N-CA-C	-7.48	90.81	111.00
1	A	1157	ILE	N-CA-C	5.94	127.05	111.00
1	A	1053	GLY	N-CA-C	-5.89	98.38	113.10

There are no chirality outliers.

There are no planarity outliers.

5.2 Too-close contacts [i](#)

In the following table, the Non-H and H(model) columns list the number of non-hydrogen atoms and hydrogen atoms in the chain respectively. The H(added) column lists the number of hydrogen atoms added and optimized by MolProbity. The Clashes column lists the number of clashes within the asymmetric unit, whereas Symm-Clashes lists symmetry-related clashes.

Mol	Chain	Non-H	H(model)	H(added)	Clashes	Symm-Clashes
1	A	2387	0	2317	136	0
2	B	51	0	41	3	0

Continued on next page...

Continued from previous page...

Mol	Chain	Non-H	H(model)	H(added)	Clashes	Symm-Clashes
3	A	28	0	18	0	0
All	All	2466	0	2376	137	0

The all-atom clashscore is defined as the number of clashes found per 1000 atoms (including hydrogen atoms). The all-atom clashscore for this structure is 28.

All (137) close contacts within the same asymmetric unit are listed below, sorted by their clash magnitude.

Atom-1	Atom-2	Interatomic distance (Å)	Clash overlap (Å)
1:A:1165:LYS:HB2	1:A:1184:GLY:HA3	1.50	0.93
1:A:1163:PTR:HB2	1:A:1165:LYS:H	1.33	0.91
1:A:1089:ARG:HH21	1:A:1092:ARG:HH12	1.25	0.83
1:A:1214:SER:H	1:A:1217:GLN:NE2	1.77	0.82
1:A:1055:THR:HA	1:A:1061:ARG:HH12	1.45	0.81
1:A:1163:PTR:HB2	1:A:1165:LYS:N	1.98	0.77
1:A:1271:PHE:O	1:A:1275:SER:HB2	1.83	0.77
1:A:1247:GLN:HE21	1:A:1247:GLN:N	1.83	0.77
1:A:1187:THR:H	1:A:1190:SER:HB3	1.48	0.76
1:A:1163:PTR:C	1:A:1165:LYS:H	1.99	0.76
1:A:1179:GLU:HG2	1:A:1180:SER:H	1.51	0.76
1:A:1110:ILE:HG23	1:A:1263:LEU:HD13	1.70	0.72
1:A:1272:PRO:HA	1:A:1278:HIS:ND1	2.05	0.70
1:A:1219:LEU:HD11	2:B:13:MET:SD	2.32	0.70
1:A:1095:ALA:HB3	1:A:1098:ASN:HB2	1.74	0.70
1:A:1089:ARG:NH2	1:A:1092:ARG:HH12	1.90	0.70
1:A:1211:GLN:HG2	1:A:1212:GLY:N	2.06	0.69
1:A:1094:GLU:HG3	1:A:1095:ALA:H	1.58	0.69
1:A:1270:SER:O	1:A:1273:GLU:HG2	1.92	0.69
1:A:999:LEU:HD22	1:A:1013:GLY:HA2	1.76	0.68
1:A:1189:SER:HB3	1:A:1253:ARG:HG3	1.78	0.66
1:A:1062:LEU:HD13	1:A:1063:LEU:N	2.11	0.66
1:A:1247:GLN:NE2	1:A:1247:GLN:H	1.94	0.65
1:A:1185:VAL:HG23	1:A:1186:PHE:H	1.62	0.64
1:A:1239:THR:O	1:A:1243:ARG:HG3	1.97	0.64
1:A:1198:VAL:O	1:A:1202:ILE:HG13	1.98	0.64
1:A:1244:MET:C	1:A:1247:GLN:HE22	2.01	0.64
1:A:1122:TYR:CE1	1:A:1126:LYS:HE3	2.34	0.63
1:A:1179:GLU:HG2	1:A:1180:SER:N	2.13	0.63
1:A:1065:VAL:HG12	1:A:1066:VAL:N	2.14	0.62
1:A:1033:ASN:C	1:A:1035:SER:H	2.01	0.62
1:A:1164:ARG:HH11	1:A:1164:ARG:HG2	1.64	0.62

Continued on next page...

Continued from previous page...

Atom-1	Atom-2	Interatomic distance (Å)	Clash overlap (Å)
1:A:1183:ASP:O	1:A:1185:VAL:HG22	1.99	0.61
1:A:1247:GLN:N	1:A:1247:GLN:NE2	2.48	0.61
1:A:1187:THR:H	1:A:1190:SER:CB	2.12	0.61
1:A:1065:VAL:HG12	1:A:1066:VAL:H	1.67	0.60
1:A:1174:ARG:HH11	1:A:1218:VAL:HG21	1.67	0.59
1:A:1014:ASN:HA	1:A:1026:ARG:HA	1.83	0.59
1:A:1162:PTR:HB2	1:A:1163:PTR:O	2.01	0.59
2:B:12:ASN:O	2:B:13:MET:HB3	2.03	0.59
1:A:1163:PTR:CB	1:A:1165:LYS:H	2.13	0.58
1:A:1063:LEU:HB3	1:A:1075:VAL:HG23	1.87	0.57
1:A:1170:LEU:O	1:A:1171:LEU:HD23	2.04	0.57
1:A:1165:LYS:HG3	1:A:1166:GLY:H	1.69	0.57
1:A:999:LEU:HD21	1:A:1014:ASN:ND2	2.20	0.57
1:A:1163:PTR:HB2	1:A:1165:LYS:CA	2.35	0.56
1:A:1184:GLY:O	1:A:1185:VAL:HG13	2.05	0.56
1:A:1228:LEU:HD23	1:A:1229:ASP:H	1.69	0.56
1:A:1187:THR:O	1:A:1190:SER:HB3	2.05	0.56
1:A:1211:GLN:HG2	1:A:1212:GLY:H	1.68	0.56
1:A:1026:ARG:N	1:A:1026:ARG:HD3	2.21	0.55
1:A:1163:PTR:O	1:A:1185:VAL:HA	2.07	0.55
1:A:1022:GLU:HA	1:A:1022:GLU:OE1	2.04	0.55
1:A:1203:THR:HG21	1:A:1234:CYS:SG	2.49	0.53
1:A:1046:ASN:O	1:A:1050:VAL:HG22	2.09	0.53
1:A:1062:LEU:HD13	1:A:1064:GLY:H	1.74	0.53
1:A:1214:SER:H	1:A:1217:GLN:HE21	1.56	0.53
1:A:1084:LEU:HB3	1:A:1135:ALA:O	2.09	0.52
1:A:1276:PHE:HA	1:A:1279:SER:HB2	1.91	0.52
1:A:1221:PHE:CE1	1:A:1226:GLY:HA3	2.45	0.52
1:A:1271:PHE:HB3	1:A:1272:PRO:HD3	1.91	0.52
1:A:1131:ARG:HB2	1:A:1153:MET:HB3	1.90	0.52
1:A:1215:ASN:O	1:A:1219:LEU:HB2	2.10	0.52
1:A:1108:GLU:O	1:A:1112:MET:HG3	2.09	0.52
1:A:1200:TRP:CH2	1:A:1207:GLU:HB3	2.44	0.51
1:A:1104:PRO:HA	1:A:1108:GLU:OE1	2.11	0.51
1:A:1240:ASP:HA	1:A:1243:ARG:HE	1.75	0.51
1:A:1054:PHE:HA	1:A:1122:TYR:HE2	1.75	0.51
1:A:1165:LYS:HG3	1:A:1166:GLY:N	2.26	0.51
1:A:1131:ARG:HD3	1:A:1153:MET:O	2.11	0.50
1:A:1125:ALA:C	1:A:1127:LYS:H	2.15	0.50
1:A:1039:ARG:O	1:A:1043:GLU:HG2	2.10	0.50
1:A:1195:PHE:CE2	1:A:1199:LEU:HD11	2.47	0.50

Continued on next page...

Continued from previous page...

Atom-1	Atom-2	Interatomic distance (Å)	Clash overlap (Å)
1:A:1090:SER:O	1:A:1098:ASN:HA	2.12	0.50
1:A:1157:ILE:HB	1:A:1161:ASP:HA	1.93	0.50
1:A:1060:VAL:HG13	1:A:1148:ILE:O	2.13	0.49
1:A:1165:LYS:HA	1:A:1165:LYS:HD2	1.59	0.48
1:A:1203:THR:HG22	1:A:1231:PRO:HB2	1.95	0.48
1:A:1064:GLY:O	1:A:1075:VAL:HG22	2.13	0.48
1:A:1173:VAL:HG13	1:A:1181:LEU:HD21	1.95	0.48
1:A:1174:ARG:NH1	1:A:1218:VAL:HG21	2.30	0.47
1:A:1089:ARG:HG2	1:A:1206:ALA:HB3	1.96	0.47
1:A:1134:ALA:HA	1:A:1198:VAL:HG22	1.95	0.47
1:A:1122:TYR:O	1:A:1125:ALA:HB3	2.15	0.47
1:A:1170:LEU:HB3	2:B:10:TYR:HB3	1.95	0.47
1:A:1016:ARG:HA	1:A:1023:ALA:O	2.15	0.46
1:A:1026:ARG:HD3	1:A:1026:ARG:H	1.80	0.46
1:A:1051:MET:SD	1:A:1062:LEU:HD23	2.55	0.46
1:A:1216:GLU:O	1:A:1220:LYS:HG2	2.16	0.45
1:A:1061:ARG:H	1:A:1077:GLU:HG2	1.82	0.45
1:A:1276:PHE:HA	1:A:1279:SER:CB	2.47	0.45
1:A:1221:PHE:CZ	1:A:1226:GLY:HA3	2.52	0.45
1:A:1230:GLN:OE1	1:A:1239:THR:HG23	2.17	0.44
1:A:1256:PHE:O	1:A:1260:VAL:HG23	2.18	0.44
1:A:1177:ALA:HB1	1:A:1178:PRO:HD2	1.99	0.44
1:A:1000:ARG:NH1	1:A:1012:GLU:OE2	2.51	0.44
1:A:1054:PHE:CD1	1:A:1054:PHE:N	2.85	0.44
1:A:1054:PHE:N	1:A:1054:PHE:HD1	2.16	0.44
1:A:1211:GLN:CG	1:A:1212:GLY:N	2.78	0.44
1:A:1007:PHE:N	1:A:1007:PHE:CD2	2.86	0.43
1:A:1101:ARG:HB2	1:A:1102:PRO:HD2	2.00	0.43
1:A:1177:ALA:HB1	1:A:1179:GLU:OE1	2.18	0.43
1:A:1051:MET:HB3	1:A:1062:LEU:HB2	2.01	0.43
1:A:1118:ASP:O	1:A:1121:ALA:HB3	2.17	0.43
1:A:1193:TRP:O	1:A:1197:VAL:HG23	2.18	0.43
1:A:1117:ALA:O	1:A:1118:ASP:C	2.56	0.43
1:A:1079:MET:HG3	1:A:1139:MET:CB	2.49	0.43
1:A:1120:MET:O	1:A:1124:ASN:ND2	2.52	0.43
1:A:1253:ARG:HG3	1:A:1253:ARG:HH11	1.83	0.42
1:A:1088:LEU:CD1	1:A:1202:ILE:HA	2.50	0.42
1:A:1131:ARG:NH1	1:A:1153:MET:O	2.46	0.42
1:A:1070:GLN:HA	1:A:1071:PRO:HA	1.61	0.42
1:A:1092:ARG:HG2	1:A:1205:LEU:HD13	2.01	0.42
1:A:1057:HIS:CG	1:A:1274:VAL:HB	2.55	0.42

Continued on next page...

Continued from previous page...

Atom-1	Atom-2	Interatomic distance (Å)	Clash overlap (Å)
1:A:1115:GLU:H	1:A:1115:GLU:HG2	1.69	0.42
1:A:1120:MET:HG3	1:A:1133:LEU:HD22	2.01	0.42
1:A:1185:VAL:O	1:A:1186:PHE:HB2	2.20	0.42
1:A:1277:PHE:HD1	1:A:1278:HIS:CD2	2.38	0.42
1:A:1063:LEU:CB	1:A:1075:VAL:HG23	2.50	0.41
1:A:1174:ARG:HB2	1:A:1175:TRP:CE3	2.55	0.41
1:A:1262:LEU:O	1:A:1263:LEU:HD23	2.20	0.41
1:A:1157:ILE:C	1:A:1158:PTR:O	2.54	0.41
1:A:1129:VAL:O	1:A:1154:THR:HA	2.20	0.41
1:A:1088:LEU:HA	1:A:1088:LEU:HD23	1.62	0.41
1:A:1200:TRP:HH2	1:A:1207:GLU:HB3	1.83	0.41
1:A:1231:PRO:O	1:A:1234:CYS:HB3	2.21	0.41
1:A:1065:VAL:CG1	1:A:1066:VAL:N	2.83	0.41
1:A:1098:ASN:HA	1:A:1099:PRO:HD2	1.88	0.41
1:A:1249:ASN:OD1	1:A:1251:LYS:HB2	2.20	0.41
1:A:1249:ASN:HA	1:A:1250:PRO:HD2	1.69	0.41
1:A:1020:LYS:HE2	1:A:1020:LYS:HB3	1.93	0.41
1:A:1262:LEU:O	1:A:1262:LEU:HD12	2.20	0.41
1:A:1273:GLU:HG2	1:A:1273:GLU:H	1.72	0.41
1:A:1103:PRO:HA	1:A:1104:PRO:HD3	1.88	0.41
1:A:1127:LYS:HE3	1:A:1157:ILE:HG13	2.02	0.40
1:A:1243:ARG:O	1:A:1247:GLN:NE2	2.54	0.40
1:A:1159:GLU:O	1:A:1160:THR:C	2.59	0.40

There are no symmetry-related clashes.

5.3 Torsion angles ⓘ

5.3.1 Protein backbone ⓘ

In the following table, the Percentiles column shows the percent Ramachandran outliers of the chain as a percentile score with respect to all X-ray entries followed by that with respect to entries of similar resolution.

The Analysed column shows the number of residues for which the backbone conformation was analysed, and the total number of residues.

Mol	Chain	Analysed	Favoured	Allowed	Outliers	Percentiles	
1	A	295/303 (97%)	232 (79%)	50 (17%)	13 (4%)	2	15
2	B	4/6 (67%)	3 (75%)	0	1 (25%)	0	0

Continued on next page...

Continued from previous page...

Mol	Chain	Analysed	Favoured	Allowed	Outliers	Percentiles	
All	All	299/309 (97%)	235 (79%)	50 (17%)	14 (5%)	2	14

All (14) Ramachandran outliers are listed below:

Mol	Chain	Res	Type
1	A	1095	ALA
1	A	1150	ASP
1	A	1275	SER
1	A	1007	PHE
1	A	1080	ALA
1	A	1160	THR
1	A	1185	VAL
1	A	1006	SER
1	A	1165	LYS
1	A	1229	ASP
2	B	13	MET
1	A	985	VAL
1	A	1132	ASP
1	A	1093	PRO

5.3.2 Protein sidechains ⓘ

In the following table, the Percentiles column shows the percent sidechain outliers of the chain as a percentile score with respect to all X-ray entries followed by that with respect to entries of similar resolution.

The Analysed column shows the number of residues for which the sidechain conformation was analysed, and the total number of residues.

Mol	Chain	Analysed	Rotameric	Outliers	Percentiles	
1	A	254/262 (97%)	232 (91%)	22 (9%)	10	34
2	B	6/6 (100%)	5 (83%)	1 (17%)	2	9
All	All	260/268 (97%)	237 (91%)	23 (9%)	10	33

All (23) residues with a non-rotameric sidechain are listed below:

Mol	Chain	Res	Type
1	A	987	ASP
1	A	988	GLU
1	A	999	LEU
1	A	1007	PHE

Continued on next page...

Continued from previous page...

Mol	Chain	Res	Type
1	A	1022	GLU
1	A	1026	ARG
1	A	1033	ASN
1	A	1038	LEU
1	A	1039	ARG
1	A	1060	VAL
1	A	1076	MET
1	A	1115	GLU
1	A	1176	MET
1	A	1185	VAL
1	A	1187	THR
1	A	1201	GLU
1	A	1219	LEU
1	A	1228	LEU
1	A	1247	GLN
1	A	1261	ASN
1	A	1265	ASP
1	A	1282	ASN
2	B	9	ASP

Sometimes sidechains can be flipped to improve hydrogen bonding and reduce clashes. All (7) such sidechains are listed below:

Mol	Chain	Res	Type
1	A	1057	HIS
1	A	1124	ASN
1	A	1217	GLN
1	A	1233	ASN
1	A	1247	GLN
1	A	1261	ASN
1	A	1282	ASN

5.3.3 RNA ⓘ

There are no RNA molecules in this entry.

5.4 Non-standard residues in protein, DNA, RNA chains ⓘ

3 non-standard protein/DNA/RNA residues are modelled in this entry.

In the following table, the Counts columns list the number of bonds (or angles) for which Mogul statistics could be retrieved, the number of bonds (or angles) that are observed in the model and

the number of bonds (or angles) that are defined in the Chemical Component Dictionary. The Link column lists molecule types, if any, to which the group is linked. The Z score for a bond length (or angle) is the number of standard deviations the observed value is removed from the expected value. A bond length (or angle) with $|Z| > 2$ is considered an outlier worth inspection. RMSZ is the root-mean-square of all Z scores of the bond lengths (or angles).

Mol	Type	Chain	Res	Link	Bond lengths			Bond angles		
					Counts	RMSZ	# Z > 2	Counts	RMSZ	# Z > 2
1	PTR	A	1162	1	15,16,17	0.79	1 (6%)	19,22,24	2.10	4 (21%)
1	PTR	A	1158	1	15,16,17	0.73	0	19,22,24	1.96	4 (21%)
1	PTR	A	1163	1	15,16,17	0.89	0	19,22,24	2.34	4 (21%)

In the following table, the Chirals column lists the number of chiral outliers, the number of chiral centers analysed, the number of these observed in the model and the number defined in the Chemical Component Dictionary. Similar counts are reported in the Torsion and Rings columns. '-' means no outliers of that kind were identified.

Mol	Type	Chain	Res	Link	Chirals	Torsions	Rings
1	PTR	A	1162	1	-	1/10/11/13	0/1/1/1
1	PTR	A	1158	1	-	3/10/11/13	0/1/1/1
1	PTR	A	1163	1	-	4/10/11/13	0/1/1/1

All (1) bond length outliers are listed below:

Mol	Chain	Res	Type	Atoms	Z	Observed(Å)	Ideal(Å)
1	A	1162	PTR	P-O1P	2.21	1.57	1.50

All (12) bond angle outliers are listed below:

Mol	Chain	Res	Type	Atoms	Z	Observed(°)	Ideal(°)
1	A	1163	PTR	CB-CA-C	-8.34	95.84	111.47
1	A	1158	PTR	CB-CA-C	-6.44	99.39	111.47
1	A	1162	PTR	CB-CA-C	-6.33	99.60	111.47
1	A	1162	PTR	CG-CB-CA	5.42	125.08	114.10
1	A	1163	PTR	P-OH-CZ	-3.59	112.25	123.75
1	A	1158	PTR	CG-CB-CA	3.44	121.06	114.10
1	A	1163	PTR	CG-CB-CA	3.34	120.87	114.10
1	A	1158	PTR	P-OH-CZ	-2.66	115.22	123.75
1	A	1158	PTR	O3P-P-OH	2.46	112.95	105.24
1	A	1162	PTR	P-OH-CZ	-2.40	116.06	123.75
1	A	1162	PTR	O3P-P-OH	2.34	112.56	105.24
1	A	1163	PTR	O3P-P-OH	2.18	112.06	105.24

There are no chirality outliers.

All (8) torsion outliers are listed below:

Mol	Chain	Res	Type	Atoms
1	A	1162	PTR	O-C-CA-CB
1	A	1163	PTR	CZ-OH-P-O1P
1	A	1158	PTR	N-CA-CB-CG
1	A	1163	PTR	N-CA-CB-CG
1	A	1163	PTR	CA-CB-CG-CD1
1	A	1163	PTR	CA-CB-CG-CD2
1	A	1158	PTR	CZ-OH-P-O1P
1	A	1158	PTR	CZ-OH-P-O2P

There are no ring outliers.

3 monomers are involved in 8 short contacts:

Mol	Chain	Res	Type	Clashes	Symm-Clashes
1	A	1162	PTR	1	0
1	A	1158	PTR	1	0
1	A	1163	PTR	7	0

5.5 Carbohydrates [i](#)

There are no monosaccharides in this entry.

5.6 Ligand geometry [i](#)

1 ligand is modelled in this entry.

In the following table, the Counts columns list the number of bonds (or angles) for which Mogul statistics could be retrieved, the number of bonds (or angles) that are observed in the model and the number of bonds (or angles) that are defined in the Chemical Component Dictionary. The Link column lists molecule types, if any, to which the group is linked. The Z score for a bond length (or angle) is the number of standard deviations the observed value is removed from the expected value. A bond length (or angle) with $|Z| > 2$ is considered an outlier worth inspection. RMSZ is the root-mean-square of all Z scores of the bond lengths (or angles).

Mol	Type	Chain	Res	Link	Bond lengths			Bond angles		
					Counts	RMSZ	$\# Z > 2$	Counts	RMSZ	$\# Z > 2$
3	S91	A	1	-	27,30,30	3.04	15 (55%)	36,41,41	3.15	16 (44%)

In the following table, the Chirals column lists the number of chiral outliers, the number of chiral centers analysed, the number of these observed in the model and the number defined in the

Chemical Component Dictionary. Similar counts are reported in the Torsion and Rings columns.
'-' means no outliers of that kind were identified.

Mol	Type	Chain	Res	Link	Chirals	Torsions	Rings
3	S91	A	1	-	-	2/14/16/16	0/3/3/3

All (15) bond length outliers are listed below:

Mol	Chain	Res	Type	Atoms	Z	Observed(Å)	Ideal(Å)
3	A	1	S91	C3-C4	6.55	1.50	1.39
3	A	1	S91	C16-C17	4.99	1.47	1.39
3	A	1	S91	C6-C1	4.63	1.48	1.38
3	A	1	S91	C3-C2	4.56	1.47	1.38
3	A	1	S91	C6-C5	4.23	1.46	1.38
3	A	1	S91	C5-C4	4.21	1.46	1.39
3	A	1	S91	C2-C1	3.86	1.47	1.38
3	A	1	S91	C18-C19	3.63	1.45	1.39
3	A	1	S91	C10-C13	-3.55	1.45	1.50
3	A	1	S91	C15-C14	3.32	1.45	1.38
3	A	1	S91	C15-C16	3.25	1.45	1.38
3	A	1	S91	C18-C17	3.23	1.44	1.39
3	A	1	S91	C12-N2	3.01	1.38	1.34
3	A	1	S91	C13-N5	2.31	1.37	1.33
3	A	1	S91	C17-N3	-2.12	1.36	1.40

All (16) bond angle outliers are listed below:

Mol	Chain	Res	Type	Atoms	Z	Observed(°)	Ideal(°)
3	A	1	S91	C11-C10-C9	7.04	121.44	114.55
3	A	1	S91	C10-C11-N2	-6.70	114.18	124.28
3	A	1	S91	C10-C13-N5	-6.18	108.80	118.29
3	A	1	S91	C10-C9-N3	-5.59	113.89	120.01
3	A	1	S91	C17-C18-C19	-4.75	115.77	120.65
3	A	1	S91	C5-C4-C3	4.66	125.41	119.03
3	A	1	S91	C14-C19-C18	4.44	124.62	117.95
3	A	1	S91	C6-C5-C4	-4.06	115.61	120.30
3	A	1	S91	C6-C1-C2	4.01	124.47	118.17
3	A	1	S91	C11-N2-C12	3.94	121.82	115.88
3	A	1	S91	O3-C13-N5	3.83	128.01	122.58
3	A	1	S91	C3-C2-C1	-3.38	116.38	121.03
3	A	1	S91	N3-C9-N1	2.86	123.38	119.12
3	A	1	S91	O3-C13-C10	2.45	123.13	120.24
3	A	1	S91	C4-N4-C12	-2.42	122.22	129.23
3	A	1	S91	C18-C17-N3	-2.38	112.26	120.32

There are no chirality outliers.

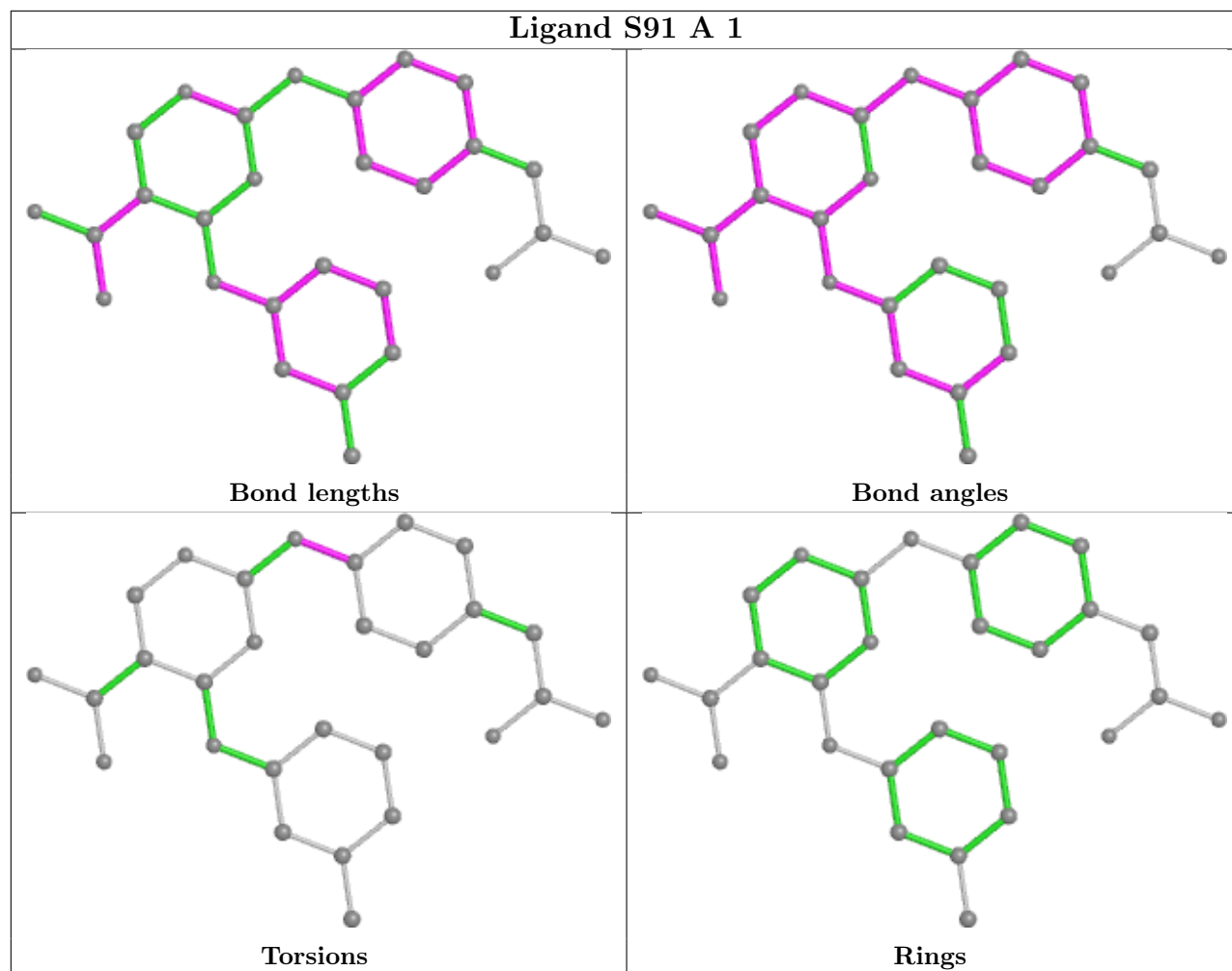
All (2) torsion outliers are listed below:

Mol	Chain	Res	Type	Atoms
3	A	1	S91	C3-C4-N4-C12
3	A	1	S91	C5-C4-N4-C12

There are no ring outliers.

No monomer is involved in short contacts.

The following is a two-dimensional graphical depiction of Mogul quality analysis of bond lengths, bond angles, torsion angles, and ring geometry for all instances of the Ligand of Interest. In addition, ligands with molecular weight > 250 and outliers as shown on the validation Tables will also be included. For torsion angles, if less than 5% of the Mogul distribution of torsion angles is within 10 degrees of the torsion angle in question, then that torsion angle is considered an outlier. Any bond that is central to one or more torsion angles identified as an outlier by Mogul will be highlighted in the graph. For rings, the root-mean-square deviation (RMSD) between the ring in question and similar rings identified by Mogul is calculated over all ring torsion angles. If the average RMSD is greater than 60 degrees and the minimal RMSD between the ring in question and any Mogul-identified rings is also greater than 60 degrees, then that ring is considered an outlier. The outliers are highlighted in purple. The color gray indicates Mogul did not find sufficient equivalents in the CSD to analyse the geometry.



5.7 Other polymers [i](#)

There are no such residues in this entry.

5.8 Polymer linkage issues [i](#)

There are no chain breaks in this entry.

6 Fit of model and data [i](#)

6.1 Protein, DNA and RNA chains [i](#)

In the following table, the column labelled ‘#RSRZ> 2’ contains the number (and percentage) of RSRZ outliers, followed by percent RSRZ outliers for the chain as percentile scores relative to all X-ray entries and entries of similar resolution. The OWAB column contains the minimum, median, 95th percentile and maximum values of the occupancy-weighted average B-factor per residue. The column labelled ‘Q< 0.9’ lists the number of (and percentage) of residues with an average occupancy less than 0.9.

Mol	Chain	Analysed	<RSRZ>	#RSRZ>2	OWAB(Å ²)	Q<0.9
1	A	297/303 (98%)	-0.52	0 100 100	33, 60, 80, 88	0
2	B	6/6 (100%)	0.15	0 100 100	63, 76, 83, 84	0
All	All	303/309 (98%)	-0.51	0 100 100	33, 60, 80, 88	0

There are no RSRZ outliers to report.

6.2 Non-standard residues in protein, DNA, RNA chains [i](#)

In the following table, the Atoms column lists the number of modelled atoms in the group and the number defined in the chemical component dictionary. The B-factors column lists the minimum, median, 95th percentile and maximum values of B factors of atoms in the group. The column labelled ‘Q< 0.9’ lists the number of atoms with occupancy less than 0.9.

Mol	Type	Chain	Res	Atoms	RSCC	RSR	B-factors(Å ²)	Q<0.9
1	PTR	A	1162	16/17	0.65	0.24	77,87,95,95	0
1	PTR	A	1158	16/17	0.73	0.21	81,91,102,103	0
1	PTR	A	1163	16/17	0.87	0.15	80,80,83,84	0

6.3 Carbohydrates [i](#)

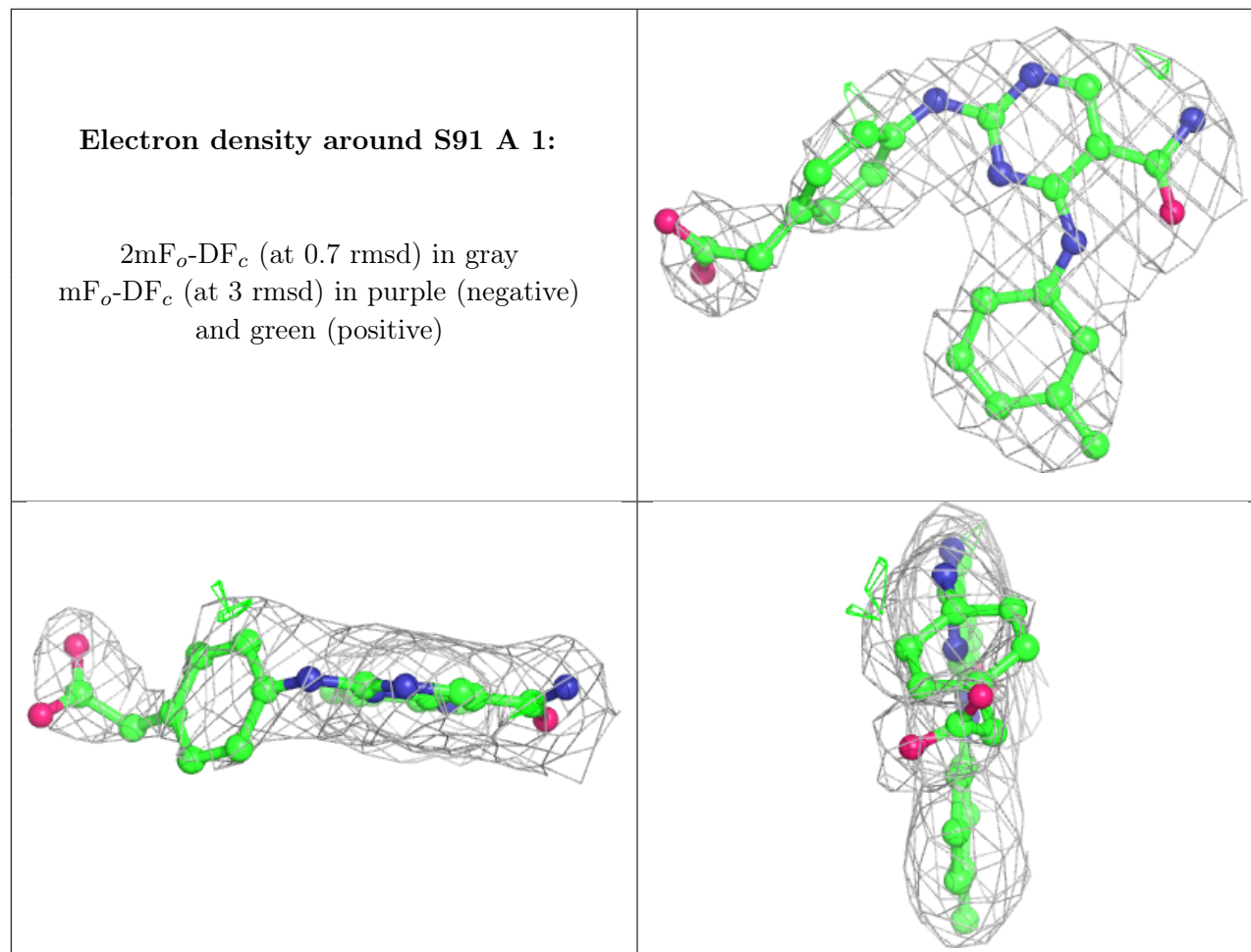
There are no monosaccharides in this entry.

6.4 Ligands [i](#)

In the following table, the Atoms column lists the number of modelled atoms in the group and the number defined in the chemical component dictionary. The B-factors column lists the minimum, median, 95th percentile and maximum values of B factors of atoms in the group. The column labelled ‘Q< 0.9’ lists the number of atoms with occupancy less than 0.9.

Mol	Type	Chain	Res	Atoms	RSCC	RSR	B-factors(\AA^2)	Q<0.9
3	S91	A	1	28/28	0.92	0.21	39,45,64,66	0

The following is a graphical depiction of the model fit to experimental electron density of all instances of the Ligand of Interest. In addition, ligands with molecular weight > 250 and outliers as shown on the geometry validation Tables will also be included. Each fit is shown from different orientation to approximate a three-dimensional view.



6.5 Other polymers ⓘ

There are no such residues in this entry.