



# Full wwPDB X-ray Structure Validation Report ⓘ

Sep 13, 2020 – 10:52 AM BST

PDB ID : 2ZAL  
Title : Crystal structure of E. coli isoaspartyl aminopeptidase/L-asparaginase in complex with L-aspartate  
Authors : Michalska, K.; Brzezinski, K.; Jaskolski, M.  
Deposited on : 2007-10-07  
Resolution : 1.90 Å(reported)

This is a Full wwPDB X-ray Structure Validation Report for a publicly released PDB entry.

We welcome your comments at [validation@mail.wwpdb.org](mailto:validation@mail.wwpdb.org)

A user guide is available at

<https://www.wwpdb.org/validation/2017/XrayValidationReportHelp>

with specific help available everywhere you see the ⓘ symbol.

---

The following versions of software and data (see [references ⓘ](#)) were used in the production of this report:

MolProbity : 4.02b-467  
Mogul : 1.8.5 (274361), CSD as541be (2020)  
Xtriage (Phenix) : 1.13  
EDS : **FAILED**  
Percentile statistics : 20191225.v01 (using entries in the PDB archive December 25th 2019)  
Ideal geometry (proteins) : Engh & Huber (2001)  
Ideal geometry (DNA, RNA) : Parkinson et al. (1996)  
Validation Pipeline (wwPDB-VP) : 2.14.4.dev1

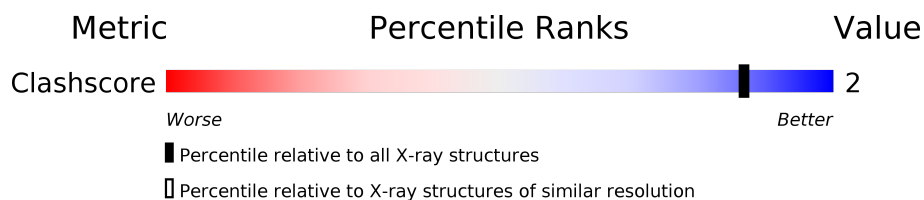
# 1 Overall quality at a glance

The following experimental techniques were used to determine the structure:

*X-RAY DIFFRACTION*

The reported resolution of this entry is 1.90 Å.

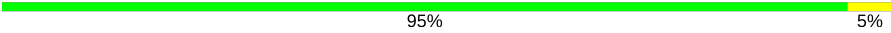
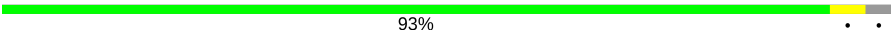


Percentile scores (ranging between 0-100) for global validation metrics of the entry are shown in the following graphic. The table shows the number of entries on which the scores are based.



Metric	Whole archive (#Entries)	Similar resolution (#Entries, resolution range(Å))
Clashscore	141614	6847 (1.90-1.90)

The table below summarises the geometric issues observed across the polymeric chains and their fit to the electron density. The red, orange, yellow and green segments on the lower bar indicate the fraction of residues that contain outliers for  $\geq 3$ , 2, 1 and 0 types of geometric quality criteria respectively. A grey segment represents the fraction of residues that are not modelled. The numeric value for each fraction is indicated below the corresponding segment, with a dot representing fractions  $\leq 5\%$

Note EDS failed to run properly.

Mol	Chain	Length	Quality of chain
1	A	160	 95% 5%
1	C	160	 93% . .
2	B	137	 90% 9% .
2	D	137	 93% 5% .

## 2 Entry composition [i](#)

There are 8 unique types of molecules in this entry. The entry contains 4598 atoms, of which 0 are hydrogens and 0 are deuteriums.

In the tables below, the ZeroOcc column contains the number of atoms modelled with zero occupancy, the AltConf column contains the number of residues with at least one atom in alternate conformation and the Trace column contains the number of residues modelled with at most 2 atoms.

- Molecule 1 is a protein called L-asparaginase.

Mol	Chain	Residues	Atoms					ZeroOcc	AltConf	Trace
1	A	160	Total	C	N	O	S	0	1	0
			1196	745	212	229	10			
1	C	156	Total	C	N	O	S	0	2	0
			1177	734	210	223	10			

- Molecule 2 is a protein called L-asparaginase.

Mol	Chain	Residues	Atoms					ZeroOcc	AltConf	Trace
2	B	135	Total	C	N	O	S	0	1	0
			956	597	161	191	7			
2	D	135	Total	C	N	O	S	0	0	0
			952	593	161	191	7			

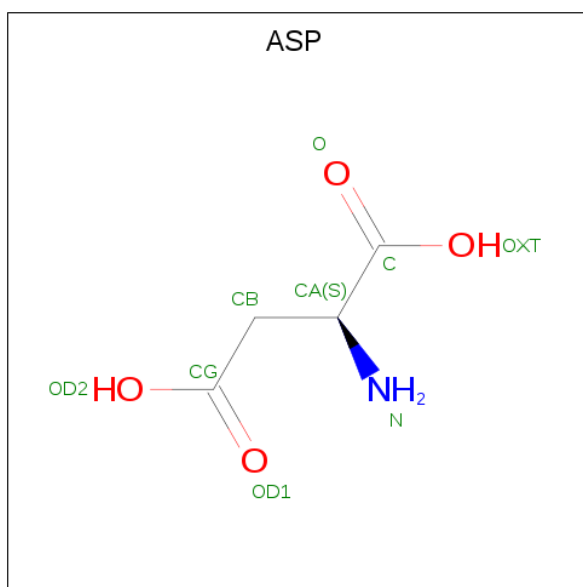
- Molecule 3 is SODIUM ION (three-letter code: NA) (formula: Na).

Mol	Chain	Residues	Atoms		ZeroOcc	AltConf
3	A	1	Total	Na	0	0
			1	1		
3	C	1	Total	Na	0	0
			1	1		

- Molecule 4 is CALCIUM ION (three-letter code: CA) (formula: Ca).

Mol	Chain	Residues	Atoms		ZeroOcc	AltConf
4	B	4	Total	Ca	0	0
			4	4		
4	A	1	Total	Ca	0	0
			1	1		

- Molecule 5 is ASPARTIC ACID (three-letter code: ASP) (formula: C<sub>4</sub>H<sub>7</sub>NO<sub>4</sub>).

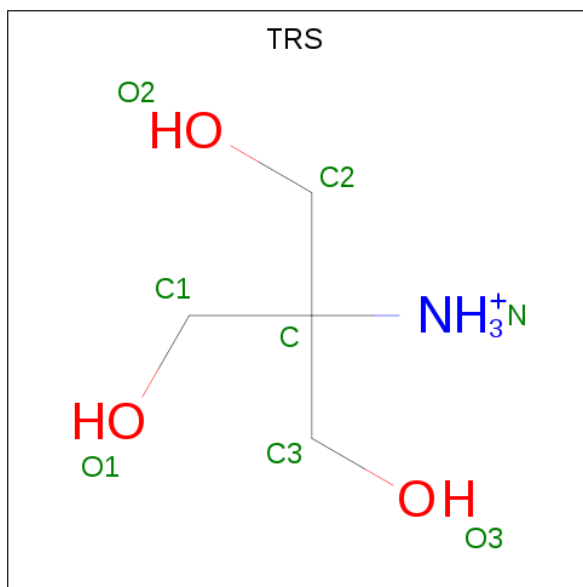


Mol	Chain	Residues	Atoms				ZeroOcc	AltConf
5	A	1	Total	C	N	O	0	0
			9	4	1	4		
5	B	1	Total	C	N	O	0	0
			9	4	1	4		
5	B	1	Total	C	N	O	0	0
			9	4	1	4		
5	B	1	Total	C	N	O	0	0
			9	4	1	4		
5	D	1	Total	C	N	O	0	0
			9	4	1	4		

- Molecule 6 is CHLORIDE ION (three-letter code: CL) (formula: Cl).

Mol	Chain	Residues	Atoms		ZeroOcc	AltConf
6	C	1	Total	Cl	0	0
			1	1		

- Molecule 7 is 2-AMINO-2-HYDROXYMETHYL-PROPANE-1,3-DIOL (three-letter code: TRS) (formula: C<sub>4</sub>H<sub>12</sub>NO<sub>3</sub>).



Mol	Chain	Residues	Atoms				ZeroOcc	AltConf
7	C	1	Total	C	N	O	0	0
			8	4	1	3		
7	C	1	Total	C	N	O	0	0
			8	4	1	3		

- Molecule 8 is water.

Mol	Chain	Residues	Atoms		ZeroOcc	AltConf
8	A	85	Total	O	0	0
			85	85		
8	B	57	Total	O	0	0
			57	57		
8	C	60	Total	O	0	0
			60	60		
8	D	46	Total	O	0	0
			46	46		

### 3 Residue-property plots [i](#)

These plots are drawn for all protein, RNA, DNA and oligosaccharide chains in the entry. The first graphic for a chain summarises the proportions of the various outlier classes displayed in the second graphic. The second graphic shows the sequence view annotated by issues in geometry. Residues are color-coded according to the number of geometric quality criteria for which they contain at least one outlier: green = 0, yellow = 1, orange = 2 and red = 3 or more. Stretches of 2 or more consecutive residues without any outlier are shown as a green connector. Residues present in the sample, but not in the model, are shown in grey.

Note EDS failed to run properly.

- Molecule 1: L-asparaginase

Chain A: 




- Molecule 1: L-asparaginase

Chain C: 



- Molecule 2: L-asparaginase

Chain B: 



- Molecule 2: L-asparaginase

Chain D: 



## 4 Data and refinement statistics

EDS failed to run properly - this section is therefore incomplete.

Property	Value	Source
Space group	P 21 21 21	Depositor
Cell constants a, b, c, $\alpha$ , $\beta$ , $\gamma$	49.89 Å 77.28 Å 147.53 Å 90.00° 90.00° 90.00°	Depositor
Resolution (Å)	20.00 – 1.90	Depositor
% Data completeness (in resolution range)	95.7 (20.00-1.90)	Depositor
$R_{merge}$	0.06	Depositor
$R_{sym}$	(Not available)	Depositor
$\langle I/\sigma(I) \rangle$ <sup>1</sup>	2.18 (at 1.90 Å)	Xtriage
Refinement program	REFMAC 5.1.24	Depositor
R, $R_{free}$	0.157 , 0.188	Depositor
Wilson B-factor (Å <sup>2</sup> )	21.7	Xtriage
Anisotropy	0.291	Xtriage
L-test for twinning <sup>2</sup>	$\langle  L  \rangle = 0.49$ , $\langle L^2 \rangle = 0.33$	Xtriage
Estimated twinning fraction	No twinning to report.	Xtriage
Total number of atoms	4598	wwPDB-VP
Average B, all atoms (Å <sup>2</sup> )	14.0	wwPDB-VP

Xtriage's analysis on translational NCS is as follows: *The largest off-origin peak in the Patterson function is 4.70% of the height of the origin peak. No significant pseudotranslation is detected.*

<sup>1</sup>Intensities estimated from amplitudes.

<sup>2</sup>Theoretical values of  $\langle |L| \rangle$ ,  $\langle L^2 \rangle$  for acentric reflections are 0.5, 0.333 respectively for untwinned datasets, and 0.375, 0.2 for perfectly twinned datasets.

## 5 Model quality [i](#)

### 5.1 Standard geometry [i](#)

Bond lengths and bond angles in the following residue types are not validated in this section: NA, CA, TRS, CL

The Z score for a bond length (or angle) is the number of standard deviations the observed value is removed from the expected value. A bond length (or angle) with  $|Z| > 5$  is considered an outlier worth inspection. RMSZ is the root-mean-square of all Z scores of the bond lengths (or angles).

Mol	Chain	Bond lengths		Bond angles	
		RMSZ	$\# Z  > 5$	RMSZ	$\# Z  > 5$
1	A	0.59	0/1213	0.74	1/1634 (0.1%)
1	C	0.55	0/1197	0.74	1/1613 (0.1%)
2	B	0.65	0/974	0.79	1/1326 (0.1%)
2	D	0.55	0/967	0.78	2/1316 (0.2%)
All	All	0.59	0/4351	0.76	5/5889 (0.1%)

There are no bond length outliers.

All (5) bond angle outliers are listed below:

Mol	Chain	Res	Type	Atoms	Z	Observed(°)	Ideal(°)
1	C	88	ASP	CB-CG-OD2	8.28	125.75	118.30
2	B	250	ASP	CB-CG-OD2	7.78	125.30	118.30
1	A	51	ASP	CB-CG-OD2	5.32	123.08	118.30
2	D	210	ASP	CB-CG-OD2	5.29	123.06	118.30
2	D	304	ASP	CB-CG-OD2	5.18	122.96	118.30

There are no chirality outliers.

There are no planarity outliers.

### 5.2 Too-close contacts [i](#)

In the following table, the Non-H and H(model) columns list the number of non-hydrogen atoms and hydrogen atoms in the chain respectively. The H(added) column lists the number of hydrogen atoms added and optimized by MolProbity. The Clashes column lists the number of clashes within the asymmetric unit, whereas Symm-Clashes lists symmetry related clashes.

Mol	Chain	Non-H	H(model)	H(added)	Clashes	Symm-Clashes
1	A	1196	0	1205	5	0
1	C	1177	0	1191	7	0

*Continued on next page...*



*Continued from previous page...*

Mol	Chain	Non-H	H(model)	H(added)	Clashes	Symm-Clashes
2	B	956	0	936	6	0
2	D	952	0	927	4	0
3	A	1	0	0	0	0
3	C	1	0	0	0	0
4	A	1	0	0	0	0
4	B	4	0	0	0	0
5	A	9	0	3	0	0
5	B	27	0	9	0	0
5	D	9	0	3	0	0
6	C	1	0	0	0	0
7	C	16	0	24	0	0
8	A	85	0	0	0	0
8	B	57	0	0	0	0
8	C	60	0	0	1	0
8	D	46	0	0	2	0
All	All	4598	0	4298	18	0

The all-atom clashscore is defined as the number of clashes found per 1000 atoms (including hydrogen atoms). The all-atom clashscore for this structure is 2.

All (18) close contacts within the same asymmetric unit are listed below, sorted by their clash magnitude.

Atom-1	Atom-2	Interatomic distance (Å)	Clash overlap (Å)
2:B:200:MET:HE1	2:B:232:THR:HA	1.43	0.98
1:A:23:GLN:HE21	1:A:23:GLN:H	1.48	0.62
1:A:156:ALA:O	1:A:159:GLU:HG3	2.01	0.60
2:D:312:ARG:O	2:D:313:GLU:HB2	2.04	0.56
1:C:121:MET:HE2	8:D:843:HOH:O	2.06	0.56
1:C:121:MET:CE	8:D:843:HOH:O	2.53	0.55
1:C:85:CYS:HB2	2:D:212:PRO:HA	1.89	0.54
2:B:312:ARG:O	2:B:313:GLU:HB2	2.12	0.50
1:A:85:CYS:HB2	2:B:212:PRO:HA	1.94	0.47
1:C:93:LYS:HD3	8:C:865:HOH:O	2.18	0.43
1:A:140:SER:O	1:A:143:ILE:HG12	2.19	0.43
1:C:5:VAL:HB	2:D:301:TYR:CD1	2.55	0.42
2:B:183:VAL:HG23	2:B:280:ILE:HD12	2.02	0.41
2:B:179:THR:HG23	2:B:197:THR:HB	2.02	0.40
2:B:226:ALA:O	2:B:279:ALA:HA	2.21	0.40
1:C:44:GLU:HG3	2:D:302:ALA:HB1	2.03	0.40

There are no symmetry-related clashes.

### 5.3 Torsion angles [i](#)

#### 5.3.1 Protein backbone [i](#)

There are no protein backbone outliers to report in this entry.

#### 5.3.2 Protein sidechains [i](#)

There are no protein residues with a non-rotameric sidechain to report in this entry.

#### 5.3.3 RNA [i](#)

There are no RNA molecules in this entry.

### 5.4 Non-standard residues in protein, DNA, RNA chains [i](#)

There are no non-standard protein/DNA/RNA residues in this entry.

### 5.5 Carbohydrates [i](#)

There are no monosaccharides in this entry.

### 5.6 Ligand geometry [i](#)

Of 15 ligands modelled in this entry, 8 are monoatomic - leaving 7 for Mogul analysis.

In the following table, the Counts columns list the number of bonds (or angles) for which Mogul statistics could be retrieved, the number of bonds (or angles) that are observed in the model and the number of bonds (or angles) that are defined in the Chemical Component Dictionary. The Link column lists molecule types, if any, to which the group is linked. The Z score for a bond length (or angle) is the number of standard deviations the observed value is removed from the expected value. A bond length (or angle) with  $|Z| > 2$  is considered an outlier worth inspection. RMSZ is the root-mean-square of all Z scores of the bond lengths (or angles).

Mol	Type	Chain	Res	Link	Bond lengths			Bond angles		
					Counts	RMSZ	$\# Z  > 2$	Counts	RMSZ	$\# Z  > 2$
5	ASP	D	500	-	2,8,8	1.73	1 (50%)	1,10,10	3.20	1 (100%)
7	TRS	C	506	-	7,7,7	0.41	0	9,9,9	0.65	0
5	ASP	B	502	4	2,8,8	0.71	0	1,10,10	0.83	0
5	ASP	B	501	-	2,8,8	1.19	0	1,10,10	2.26	1 (100%)
7	TRS	C	505	-	7,7,7	0.36	0	9,9,9	0.31	0
5	ASP	A	503	4	2,8,8	0.68	0	1,10,10	0.13	0

Mol	Type	Chain	Res	Link	Bond lengths			Bond angles		
					Counts	RMSZ	# Z  > 2	Counts	RMSZ	# Z  > 2
5	ASP	B	504	4	2,8,8	0.75	0	1,10,10	0.73	0

In the following table, the Chirals column lists the number of chiral outliers, the number of chiral centers analysed, the number of these observed in the model and the number defined in the Chemical Component Dictionary. Similar counts are reported in the Torsion and Rings columns. '-' means no outliers of that kind were identified.

Mol	Type	Chain	Res	Link	Chirals	Torsions	Rings
5	ASP	D	500	-	-	0/2/8/8	-
7	TRS	C	506	-	-	0/9/9/9	-
5	ASP	B	502	4	-	0/2/8/8	-
5	ASP	B	501	-	-	0/2/8/8	-
7	TRS	C	505	-	-	0/9/9/9	-
5	ASP	A	503	4	-	0/2/8/8	-
5	ASP	B	504	4	-	0/2/8/8	-

All (1) bond length outliers are listed below:

Mol	Chain	Res	Type	Atoms	Z	Observed(Å)	Ideal(Å)
5	D	500	ASP	CA-N	2.44	1.52	1.47

All (2) bond angle outliers are listed below:

Mol	Chain	Res	Type	Atoms	Z	Observed(°)	Ideal(°)
5	D	500	ASP	CB-CA-C	-3.20	105.51	110.69
5	B	501	ASP	CB-CA-C	-2.26	107.03	110.69

There are no chirality outliers.

There are no torsion outliers.

There are no ring outliers.

No monomer is involved in short contacts.

## 5.7 Other polymers

There are no such residues in this entry.

## 5.8 Polymer linkage issues

There are no chain breaks in this entry.

## 6 Fit of model and data

### 6.1 Protein, DNA and RNA chains

EDS failed to run properly - this section is therefore empty.

### 6.2 Non-standard residues in protein, DNA, RNA chains

EDS failed to run properly - this section is therefore empty.

### 6.3 Carbohydrates

EDS failed to run properly - this section is therefore empty.

### 6.4 Ligands

EDS failed to run properly - this section is therefore empty.

### 6.5 Other polymers

EDS failed to run properly - this section is therefore empty.