



Full wwPDB X-ray Structure Validation Report ⓘ

Aug 8, 2020 – 03:28 AM BST

PDB ID : 4ZAK
Title : Crystal structure of the mCD1d/DB06-1/iNKTTCR ternary complex
Authors : Zajonc, D.M.; Birkholz, A.M.
Deposited on : 2015-04-13
Resolution : 2.82 Å(reported)

This is a Full wwPDB X-ray Structure Validation Report for a publicly released PDB entry.

We welcome your comments at validation@mail.wwpdb.org

A user guide is available at

<https://www.wwpdb.org/validation/2017/XrayValidationReportHelp>

with specific help available everywhere you see the ⓘ symbol.

The following versions of software and data (see [references ⓘ](#)) were used in the production of this report:

MolProbity : 4.02b-467
Mogul : 1.8.5 (274361), CSD as541be (2020)
Xtriage (Phenix) : 1.13
EDS : 2.13.1
buster-report : 1.1.7 (2018)
Percentile statistics : 20191225.v01 (using entries in the PDB archive December 25th 2019)
Refmac : 5.8.0158
CCP4 : 7.0.044 (Gargrove)
Ideal geometry (proteins) : Engh & Huber (2001)
Ideal geometry (DNA, RNA) : Parkinson et al. (1996)
Validation Pipeline (wwPDB-VP) : 2.13.1

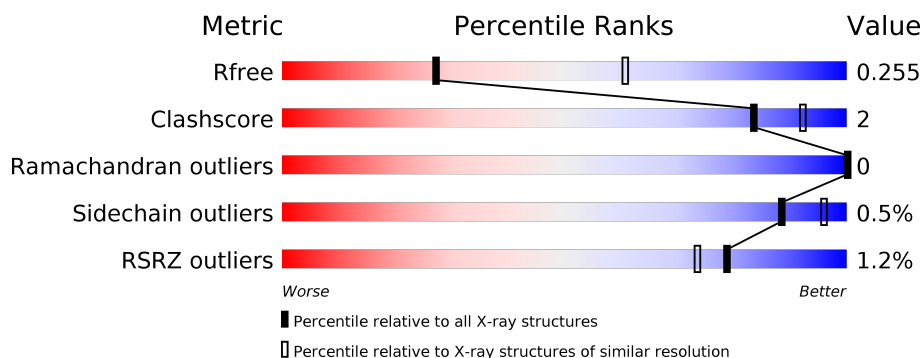
1 Overall quality at a glance

The following experimental techniques were used to determine the structure:

X-RAY DIFFRACTION

The reported resolution of this entry is 2.82 Å.

Percentile scores (ranging between 0-100) for global validation metrics of the entry are shown in the following graphic. The table shows the number of entries on which the scores are based.



Metric	Whole archive (#Entries)	Similar resolution (#Entries, resolution range(Å))
R_{free}	130704	3617 (2.84-2.80)
Clashscore	141614	4060 (2.84-2.80)
Ramachandran outliers	138981	3978 (2.84-2.80)
Sidechain outliers	138945	3980 (2.84-2.80)
RSRZ outliers	127900	3552 (2.84-2.80)

The table below summarises the geometric issues observed across the polymeric chains and their fit to the electron density. The red, orange, yellow and green segments on the lower bar indicate the fraction of residues that contain outliers for ≥ 3 , 2, 1 and 0 types of geometric quality criteria respectively. A grey segment represents the fraction of residues that are not modelled. The numeric value for each fraction is indicated below the corresponding segment, with a dot representing fractions $\leq 5\%$. The upper red bar (where present) indicates the fraction of residues that have poor fit to the electron density. The numeric value is given above the bar.

Mol	Chain	Length	Quality of chain
1	A	285	<div> <div>%</div> <div> <div></div> <div>84%</div> <div>9%</div> <div>6%</div> </div> </div>
2	B	99	<div> <div>2%</div> <div> <div></div> <div>95%</div> <div></div> </div> </div>
3	C	209	<div> <div>%</div> <div> <div></div> <div>91%</div> <div>6%</div> </div> </div>
4	D	241	<div> <div></div> <div> <div></div> <div>91%</div> <div>8%</div> </div> </div>
5	E	2	<div> <div></div> <div> <div>50%</div> <div>50%</div> </div> </div>

2 Entry composition

There are 7 unique types of molecules in this entry. The entry contains 6340 atoms, of which 0 are hydrogens and 0 are deuteriums.

In the tables below, the ZeroOcc column contains the number of atoms modelled with zero occupancy, the AltConf column contains the number of residues with at least one atom in alternate conformation and the Trace column contains the number of residues modelled with at most 2 atoms.

- Molecule 1 is a protein called Antigen-presenting glycoprotein CD1d1.

Mol	Chain	Residues	Atoms					ZeroOcc	AltConf	Trace
1	A	267	Total	C	N	O	S	0	0	0
			2072	1329	346	384	13			

There are 7 discrepancies between the modelled and reference sequences:

Chain	Residue	Modelled	Actual	Comment	Reference
A	201	HIS	ASP	conflict	UNP P11609
A	280	HIS	-	expression tag	UNP P11609
A	281	HIS	-	expression tag	UNP P11609
A	282	HIS	-	expression tag	UNP P11609
A	283	HIS	-	expression tag	UNP P11609
A	284	HIS	-	expression tag	UNP P11609
A	285	HIS	-	expression tag	UNP P11609

- Molecule 2 is a protein called Beta-2-microglobulin.

Mol	Chain	Residues	Atoms					ZeroOcc	AltConf	Trace
2	B	98	Total	C	N	O	S	0	0	0
			758	485	123	144	6			

- Molecule 3 is a protein called Protein Trav11,Va14Ja18/Vb8.2,Human nkt tcr alpha chain.

Mol	Chain	Residues	Atoms					ZeroOcc	AltConf	Trace
3	C	203	Total	C	N	O	S	0	0	0
			1529	948	262	311	8			

There are 6 discrepancies between the modelled and reference sequences:

Chain	Residue	Modelled	Actual	Comment	Reference
C	0	MET	-	initiating methionine	UNP A0A0B4J1J9
C	98	ALA	THR	conflict	UNP A0N4Z0
C	103	HIS	TYR	conflict	UNP A0N4Z0

Continued on next page...

Continued from previous page...

Chain	Residue	Modelled	Actual	Comment	Reference
C	106	ALA	ARG	conflict	UNP A0N4Z0
C	111	ILE	THR	conflict	UNP A0N4Z0
C	113	ILE	-	linker	UNP A0N4Z0

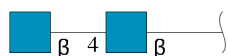
- Molecule 4 is a protein called T cell antigen receptor beta chain 8.2,T-cell receptor beta-2 chain C region,Protein Trbc2,T-cell receptor beta-2 chain C region.

Mol	Chain	Residues	Atoms					ZeroOcc	AltConf	Trace
4	D	239	Total	C	N	O	S	0	0	0
			1865	1172	332	355	6			

There are 2 discrepancies between the modelled and reference sequences:

Chain	Residue	Modelled	Actual	Comment	Reference
D	168	CYS	SER	engineered mutation	UNP A0A5B9
D	186	SER	CYS	engineered mutation	UNP A0A5B9

- Molecule 5 is an oligosaccharide called 2-acetamido-2-deoxy-beta-D-glucopyranose-(1-4)-2-acetamido-2-deoxy-beta-D-glucopyranose.



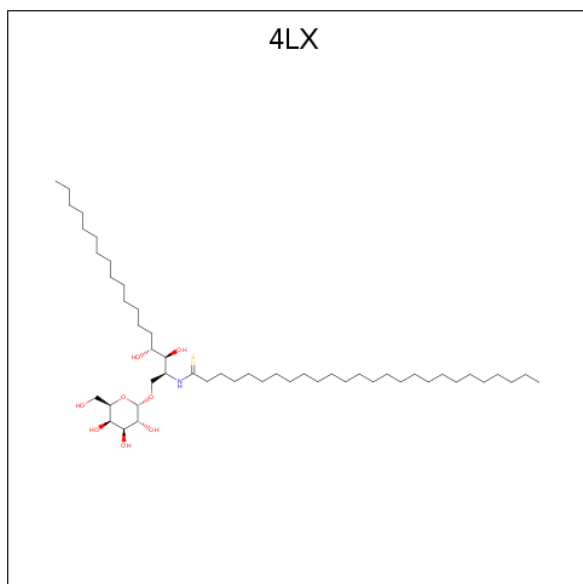
Mol	Chain	Residues	Atoms					ZeroOcc	AltConf	Trace
5	E	2	Total	C	N	O		0	0	0
			28	16	2	10				

- Molecule 6 is 2-acetamido-2-deoxy-beta-D-glucopyranose (three-letter code: NAG) (formula: C₈H₁₅NO₆).



Mol	Chain	Residues	Atoms				ZeroOcc	AltConf
6	A	1	Total	C	N	O	0	0
			14	8	1	5		
6	A	1	Total	C	N	O	0	0
			14	8	1	5		

- Molecule 7 is N-[(2S,3S,4R)-1-(alpha-D-galactopyranosyloxy)-3,4-dihydroxyoctadecan-2-yl] hexacosanethioamide (three-letter code: 4LX) (formula: C₅₀H₉₉NO₈S).

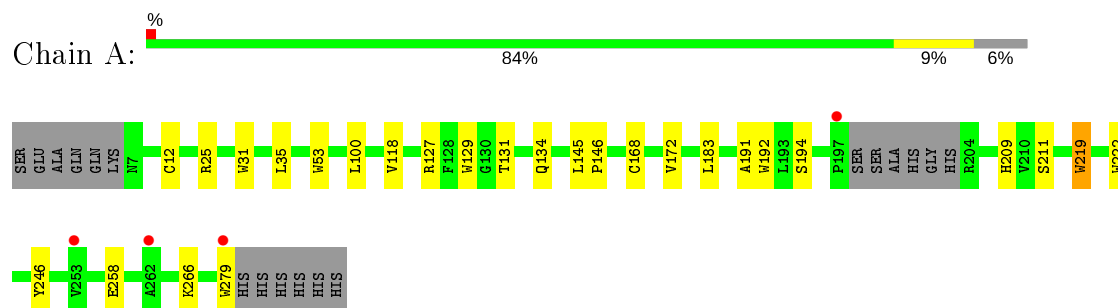


Mol	Chain	Residues	Atoms					ZeroOcc	AltConf
7	A	1	Total	C	N	O	S	0	0
			60	50	1	8	1		

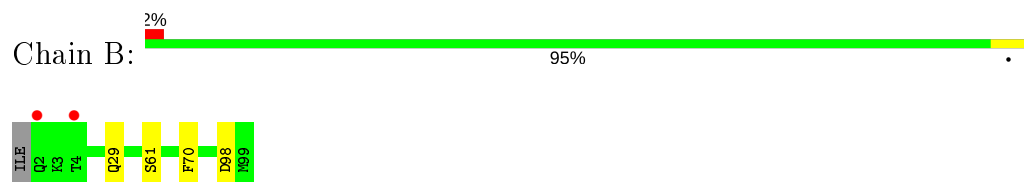
3 Residue-property plots [i](#)

These plots are drawn for all protein, RNA, DNA and oligosaccharide chains in the entry. The first graphic for a chain summarises the proportions of the various outlier classes displayed in the second graphic. The second graphic shows the sequence view annotated by issues in geometry and electron density. Residues are color-coded according to the number of geometric quality criteria for which they contain at least one outlier: green = 0, yellow = 1, orange = 2 and red = 3 or more. A red dot above a residue indicates a poor fit to the electron density ($RSRZ > 2$). Stretches of 2 or more consecutive residues without any outlier are shown as a green connector. Residues present in the sample, but not in the model, are shown in grey.

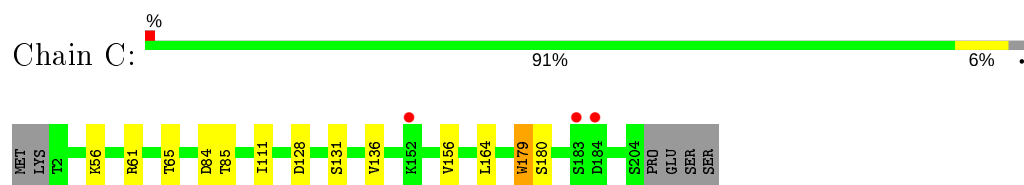
- Molecule 1: Antigen-presenting glycoprotein CD1d1



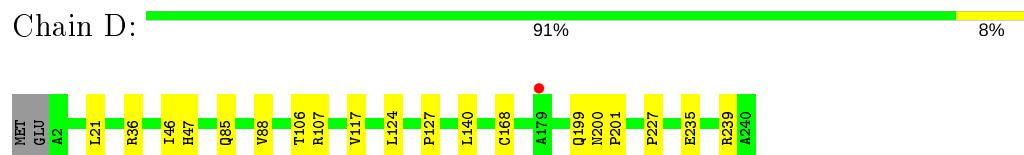
- Molecule 2: Beta-2-microglobulin



- Molecule 3: Protein Trav11,Va14Ja18/Vb8.2,Human nkt tcr alpha chain



- Molecule 4: T cell antigen receptor beta chain 8.2,T-cell receptor beta-2 chain C region,Protein Trbc2,T-cell receptor beta-2 chain C region



- Molecule 5: 2-acetamido-2-deoxy-beta-D-glucopyranose-(1-4)-2-acetamido-2-deoxy-beta-D-glucopyranose





4 Data and refinement statistics

Property	Value	Source
Space group	C 2 2 21	Depositor
Cell constants a, b, c, α , β , γ	78.92Å 190.54Å 150.76Å 90.00° 90.00° 90.00°	Depositor
Resolution (Å)	45.42 – 2.82 45.42 – 2.82	Depositor EDS
% Data completeness (in resolution range)	98.0 (45.42-2.82) 98.1 (45.42-2.82)	Depositor EDS
R_{merge}	(Not available)	Depositor
R_{sym}	0.01	Depositor
$\langle I/\sigma(I) \rangle$ ¹	1.66 (at 2.81Å)	Xtriage
Refinement program	REFMAC 5.6.0104	Depositor
R, R_{free}	0.216 , 0.256 0.215 , 0.255	Depositor DCC
R_{free} test set	1366 reflections (5.02%)	wwPDB-VP
Wilson B-factor (Å ²)	51.0	Xtriage
Anisotropy	0.074	Xtriage
Bulk solvent k_{sol} (e/Å ³), B_{sol} (Å ²)	0.31 , 14.5	EDS
L-test for twinning ²	$\langle L \rangle = 0.49$, $\langle L^2 \rangle = 0.32$	Xtriage
Estimated twinning fraction	No twinning to report.	Xtriage
F_o, F_c correlation	0.92	EDS
Total number of atoms	6340	wwPDB-VP
Average B, all atoms (Å ²)	49.0	wwPDB-VP

Xtriage's analysis on translational NCS is as follows: *The largest off-origin peak in the Patterson function is 3.62% of the height of the origin peak. No significant pseudotranslation is detected.*

¹Intensities estimated from amplitudes.

²Theoretical values of $\langle |L| \rangle$, $\langle L^2 \rangle$ for acentric reflections are 0.5, 0.333 respectively for untwinned datasets, and 0.375, 0.2 for perfectly twinned datasets.

5 Model quality ⓘ

5.1 Standard geometry ⓘ

Bond lengths and bond angles in the following residue types are not validated in this section: 4LX, NAG

The Z score for a bond length (or angle) is the number of standard deviations the observed value is removed from the expected value. A bond length (or angle) with $|Z| > 5$ is considered an outlier worth inspection. RMSZ is the root-mean-square of all Z scores of the bond lengths (or angles).

Mol	Chain	Bond lengths		Bond angles	
		RMSZ	$\# Z > 5$	RMSZ	$\# Z > 5$
1	A	0.62	6/2134 (0.3%)	0.50	0/2913
2	B	0.55	0/784	0.48	0/1076
3	C	0.44	1/1557 (0.1%)	0.50	0/2123
4	D	0.52	0/1916	0.50	0/2613
All	All	0.54	7/6391 (0.1%)	0.50	0/8725

All (7) bond length outliers are listed below:

Mol	Chain	Res	Type	Atoms	Z	Observed(Å)	Ideal(Å)
1	A	31	TRP	CD2-CE2	5.07	1.47	1.41
1	A	222	TRP	CD2-CE2	5.07	1.47	1.41
1	A	129	TRP	CD2-CE2	5.05	1.47	1.41
1	A	53	TRP	CD2-CE2	5.03	1.47	1.41
1	A	219	TRP	CD2-CE2	5.02	1.47	1.41
1	A	192	TRP	CD2-CE2	5.02	1.47	1.41
3	C	179	TRP	CD2-CE2	5.01	1.47	1.41

There are no bond angle outliers.

There are no chirality outliers.

There are no planarity outliers.

5.2 Too-close contacts ⓘ

In the following table, the Non-H and H(model) columns list the number of non-hydrogen atoms and hydrogen atoms in the chain respectively. The H(added) column lists the number of hydrogen atoms added and optimized by MolProbity. The Clashes column lists the number of clashes within the asymmetric unit, whereas Symm-Clashes lists symmetry related clashes.

Mol	Chain	Non-H	H(model)	H(added)	Clashes	Symm-Clashes
1	A	2072	0	1914	12	0
2	B	758	0	673	2	0
3	C	1529	0	1428	7	0
4	D	1865	0	1766	10	0
5	E	28	0	25	0	0
6	A	28	0	26	1	0
7	A	60	0	99	1	0
All	All	6340	0	5931	29	0

The all-atom clashscore is defined as the number of clashes found per 1000 atoms (including hydrogen atoms). The all-atom clashscore for this structure is 2.

All (29) close contacts within the same asymmetric unit are listed below, sorted by their clash magnitude.

Atom-1	Atom-2	Interatomic distance (Å)	Clash overlap (Å)
1:A:35:LEU:HD12	1:A:183:LEU:HD23	1.88	0.55
3:C:61:ARG:NH2	3:C:84:ASP:OD2	2.41	0.54
3:C:156:VAL:HA	3:C:180:SER:HB2	1.89	0.53
4:D:88:VAL:HG22	4:D:107:ARG:HG2	1.91	0.52
3:C:128:ASP:HB3	3:C:131:SER:O	2.11	0.51
3:C:164:LEU:HB3	4:D:168:CYS:HB2	1.95	0.48
1:A:219:TRP:HB3	1:A:266:LYS:HB2	1.94	0.48
1:A:25:ARG:HB3	6:A:302:NAG:H82	1.94	0.47
3:C:56:LYS:HG2	3:C:65:THR:HG22	1.95	0.47
2:B:29:GLN:HA	2:B:61:SER:HB2	1.97	0.47
1:A:100:LEU:HG	1:A:118:VAL:HG22	1.97	0.46
4:D:21:LEU:HD22	4:D:106:THR:HG21	1.97	0.45
1:A:127:ARG:HE	1:A:134:GLN:NE2	2.15	0.45
1:A:194:SER:HB2	2:B:98:ASP:HA	1.99	0.45
1:A:211:SER:HB2	1:A:246:TYR:HD1	1.82	0.45
4:D:117:VAL:HG12	4:D:227:PRO:HB2	1.98	0.45
4:D:199:GLN:HA	4:D:239:ARG:O	2.17	0.45
1:A:191:ALA:HA	1:A:209:HIS:O	2.16	0.44
4:D:124:LEU:HD11	4:D:140:LEU:HD23	1.99	0.44
1:A:145:LEU:HB3	1:A:146:PRO:HD3	2.00	0.43
4:D:200:ASN:HA	4:D:201:PRO:HD3	1.90	0.43
1:A:258:GLU:HB3	1:A:279:TRP:CD1	2.54	0.42
3:C:136:VAL:HG12	3:C:179:TRP:HB3	2.02	0.42
4:D:46:ILE:HG22	4:D:47:HIS:CD2	2.55	0.42
4:D:127:PRO:HD3	4:D:140:LEU:HG	2.02	0.41
3:C:85:THR:HG23	3:C:111:ILE:HA	2.02	0.41
4:D:36:ARG:HH12	4:D:85:GLN:HA	1.86	0.41

Continued on next page...

Continued from previous page...

Atom-1	Atom-2	Interatomic distance (Å)	Clash overlap (Å)
1:A:12:CYS:HB3	7:A:305:4LX:H69	2.03	0.40
1:A:168:CYS:O	1:A:172:VAL:HG23	2.21	0.40

There are no symmetry-related clashes.

5.3 Torsion angles [i](#)

5.3.1 Protein backbone [i](#)

In the following table, the Percentiles column shows the percent Ramachandran outliers of the chain as a percentile score with respect to all X-ray entries followed by that with respect to entries of similar resolution.

The Analysed column shows the number of residues for which the backbone conformation was analysed, and the total number of residues.

Mol	Chain	Analysed	Favoured	Allowed	Outliers	Percentiles	
1	A	263/285 (92%)	257 (98%)	6 (2%)	0	100	100
2	B	96/99 (97%)	95 (99%)	1 (1%)	0	100	100
3	C	201/209 (96%)	192 (96%)	9 (4%)	0	100	100
4	D	237/241 (98%)	235 (99%)	2 (1%)	0	100	100
All	All	797/834 (96%)	779 (98%)	18 (2%)	0	100	100

There are no Ramachandran outliers to report.

5.3.2 Protein sidechains [i](#)

In the following table, the Percentiles column shows the percent sidechain outliers of the chain as a percentile score with respect to all X-ray entries followed by that with respect to entries of similar resolution.

The Analysed column shows the number of residues for which the sidechain conformation was analysed, and the total number of residues.

Mol	Chain	Analysed	Rotameric	Outliers	Percentiles	
1	A	215/249 (86%)	214 (100%)	1 (0%)	88	96
2	B	80/93 (86%)	79 (99%)	1 (1%)	69	90
3	C	170/188 (90%)	170 (100%)	0	100	100

Continued on next page...

Continued from previous page...

Mol	Chain	Analysed	Rotameric	Outliers	Percentiles	
4	D	200/208 (96%)	199 (100%)	1 (0%)	88	96
All	All	665/738 (90%)	662 (100%)	3 (0%)	88	96

All (3) residues with a non-rotameric sidechain are listed below:

Mol	Chain	Res	Type
1	A	131	THR
2	B	70	PHE
4	D	235	GLU

Some sidechains can be flipped to improve hydrogen bonding and reduce clashes. All (3) such sidechains are listed below:

Mol	Chain	Res	Type
1	A	134	GLN
3	C	31	ASN
4	D	230	GLN

5.3.3 RNA ⓘ

There are no RNA molecules in this entry.

5.4 Non-standard residues in protein, DNA, RNA chains ⓘ

There are no non-standard protein/DNA/RNA residues in this entry.

5.5 Carbohydrates ⓘ

2 monosaccharides are modelled in this entry.

In the following table, the Counts columns list the number of bonds (or angles) for which Mogul statistics could be retrieved, the number of bonds (or angles) that are observed in the model and the number of bonds (or angles) that are defined in the Chemical Component Dictionary. The Link column lists molecule types, if any, to which the group is linked. The Z score for a bond length (or angle) is the number of standard deviations the observed value is removed from the expected value. A bond length (or angle) with $|Z| > 2$ is considered an outlier worth inspection. RMSZ is the root-mean-square of all Z scores of the bond lengths (or angles).

Mol	Type	Chain	Res	Link	Bond lengths			Bond angles		
					Counts	RMSZ	$\# Z > 2$	Counts	RMSZ	$\# Z > 2$
5	NAG	E	1	1,5	14,14,15	0.52	0	17,19,21	0.80	0

Mol	Type	Chain	Res	Link	Bond lengths			Bond angles		
					Counts	RMSZ	# Z > 2	Counts	RMSZ	# Z > 2
5	NAG	E	2	5	14,14,15	0.52	0	17,19,21	1.01	1 (5%)

In the following table, the Chirals column lists the number of chiral outliers, the number of chiral centers analysed, the number of these observed in the model and the number defined in the Chemical Component Dictionary. Similar counts are reported in the Torsion and Rings columns. '-' means no outliers of that kind were identified.

Mol	Type	Chain	Res	Link	Chirals	Torsions	Rings
5	NAG	E	1	1,5	-	1/6/23/26	0/1/1/1
5	NAG	E	2	5	-	2/6/23/26	0/1/1/1

There are no bond length outliers.

All (1) bond angle outliers are listed below:

Mol	Chain	Res	Type	Atoms	Z	Observed(°)	Ideal(°)
5	E	2	NAG	C1-O5-C5	2.62	115.74	112.19

There are no chirality outliers.

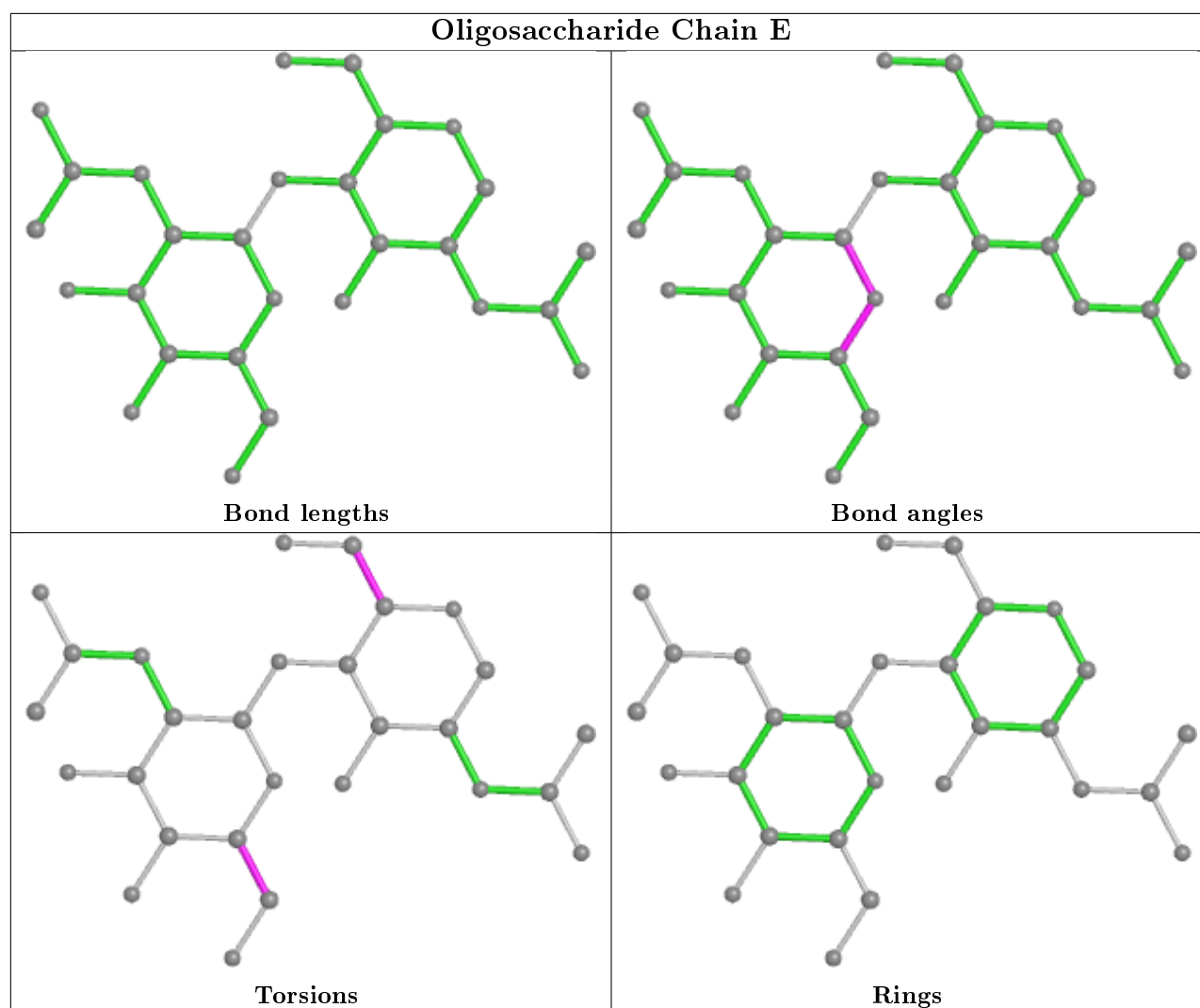
All (3) torsion outliers are listed below:

Mol	Chain	Res	Type	Atoms
5	E	2	NAG	O5-C5-C6-O6
5	E	2	NAG	C4-C5-C6-O6
5	E	1	NAG	C4-C5-C6-O6

There are no ring outliers.

No monomer is involved in short contacts.

The following is a two-dimensional graphical depiction of Mogul quality analysis of bond lengths, bond angles, torsion angles, and ring geometry for oligosaccharide.



5.6 Ligand geometry ⓘ

3 ligands are modelled in this entry.

In the following table, the Counts columns list the number of bonds (or angles) for which Mogul statistics could be retrieved, the number of bonds (or angles) that are observed in the model and the number of bonds (or angles) that are defined in the Chemical Component Dictionary. The Link column lists molecule types, if any, to which the group is linked. The Z score for a bond length (or angle) is the number of standard deviations the observed value is removed from the expected value. A bond length (or angle) with $|Z| > 2$ is considered an outlier worth inspection. RMSZ is the root-mean-square of all Z scores of the bond lengths (or angles).

Mol	Type	Chain	Res	Link	Bond lengths			Bond angles		
					Counts	RMSZ	$\# Z > 2$	Counts	RMSZ	$\# Z > 2$
6	NAG	A	301	1	14,14,15	0.54	0	17,19,21	1.00	1 (5%)
6	NAG	A	302	1	14,14,15	0.49	0	17,19,21	1.05	1 (5%)
7	4LX	A	305	-	59,60,60	0.64	1 (1%)	65,69,69	0.73	2 (3%)

In the following table, the Chirals column lists the number of chiral outliers, the number of chiral centers analysed, the number of these observed in the model and the number defined in the Chemical Component Dictionary. Similar counts are reported in the Torsion and Rings columns. '-' means no outliers of that kind were identified.

Mol	Type	Chain	Res	Link	Chirals	Torsions	Rings
6	NAG	A	301	1	-	2/6/23/26	0/1/1/1
6	NAG	A	302	1	-	2/6/23/26	0/1/1/1
7	4LX	A	305	-	-	24/57/78/78	0/1/1/1

All (1) bond length outliers are listed below:

Mol	Chain	Res	Type	Atoms	Z	Observed(Å)	Ideal(Å)
7	A	305	4LX	CAA-SAA	-3.46	1.56	1.65

All (4) bond angle outliers are listed below:

Mol	Chain	Res	Type	Atoms	Z	Observed(°)	Ideal(°)
6	A	302	NAG	C1-O5-C5	3.17	116.48	112.19
6	A	301	NAG	O5-C5-C6	2.57	111.23	107.20
7	A	305	4LX	C1-C2-N2	-2.24	106.31	109.61
7	A	305	4LX	O6A-C5M-C6A	2.09	111.64	106.44

There are no chirality outliers.

All (28) torsion outliers are listed below:

Mol	Chain	Res	Type	Atoms
6	A	302	NAG	O5-C5-C6-O6
6	A	302	NAG	C4-C5-C6-O6
7	A	305	4LX	O4-C4-C5-C6
7	A	305	4LX	CAJ-CAK-CAL-CAM
7	A	305	4LX	C11-C10-C9-C8
7	A	305	4LX	CAQ-CAR-CAS-CAT
7	A	305	4LX	C12-C13-C14-C15
7	A	305	4LX	C13-C14-C15-C16
6	A	301	NAG	C4-C5-C6-O6
7	A	305	4LX	C9-C10-C11-C12
6	A	301	NAG	O5-C5-C6-O6
7	A	305	4LX	CAP-CAQ-CAR-CAS
7	A	305	4LX	CAF-CAG-CAH-CAI
7	A	305	4LX	CAN-CAO-CAP-CAQ
7	A	305	4LX	CAM-CAN-CAO-CAP
7	A	305	4LX	O6A-C5M-C6A-O5A

Continued on next page...

Continued from previous page...

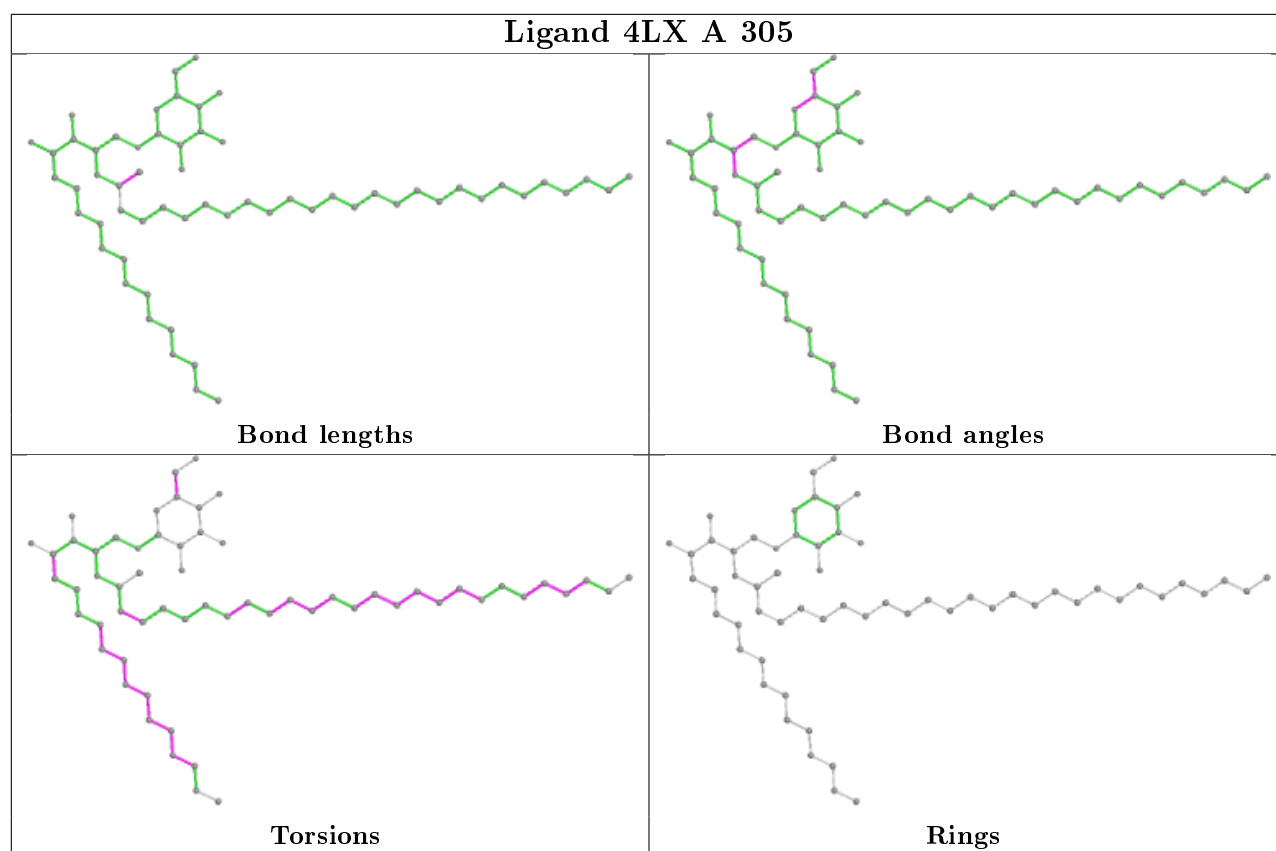
Mol	Chain	Res	Type	Atoms
7	A	305	4LX	CAO-CAP-CAQ-CAR
7	A	305	4LX	CAU-CAV-CAW-CAX
7	A	305	4LX	CAT-CAU-CAV-CAW
7	A	305	4LX	CAA-CAB-CAC-CAD
7	A	305	4LX	C10-C11-C12-C13
7	A	305	4LX	CAI-CAJ-CAK-CAL
7	A	305	4LX	C7-C8-C9-C10
7	A	305	4LX	CAL-CAM-CAN-CAO
7	A	305	4LX	CAV-CAW-CAX-CAY
7	A	305	4LX	CAH-CAI-CAJ-CAK
7	A	305	4LX	C11-C12-C13-C14
7	A	305	4LX	C14-C15-C16-C17

There are no ring outliers.

2 monomers are involved in 2 short contacts:

Mol	Chain	Res	Type	Clashes	Symm-Clashes
6	A	302	NAG	1	0
7	A	305	4LX	1	0

The following is a two-dimensional graphical depiction of Mogul quality analysis of bond lengths, bond angles, torsion angles, and ring geometry for all instances of the Ligand of Interest. In addition, ligands with molecular weight > 250 and outliers as shown on the validation Tables will also be included. For torsion angles, if less than 5% of the Mogul distribution of torsion angles is within 10 degrees of the torsion angle in question, then that torsion angle is considered an outlier. Any bond that is central to one or more torsion angles identified as an outlier by Mogul will be highlighted in the graph. For rings, the root-mean-square deviation (RMSD) between the ring in question and similar rings identified by Mogul is calculated over all ring torsion angles. If the average RMSD is greater than 60 degrees and the minimal RMSD between the ring in question and any Mogul-identified rings is also greater than 60 degrees, then that ring is considered an outlier. The outliers are highlighted in purple. The color gray indicates Mogul did not find sufficient equivalents in the CSD to analyse the geometry.



5.7 Other polymers [i](#)

There are no such residues in this entry.

5.8 Polymer linkage issues [i](#)

There are no chain breaks in this entry.

6 Fit of model and data [i](#)

6.1 Protein, DNA and RNA chains [i](#)

In the following table, the column labelled ‘#RSRZ> 2’ contains the number (and percentage) of RSRZ outliers, followed by percent RSRZ outliers for the chain as percentile scores relative to all X-ray entries and entries of similar resolution. The OWAB column contains the minimum, median, 95th percentile and maximum values of the occupancy-weighted average B-factor per residue. The column labelled ‘Q< 0.9’ lists the number of (and percentage) of residues with an average occupancy less than 0.9.

Mol	Chain	Analysed	<RSRZ>	#RSRZ>2	OWAB(Å ²)	Q<0.9
1	A	267/285 (93%)	-0.01	4 (1%) 73 67	31, 45, 84, 98	0
2	B	98/99 (98%)	0.08	2 (2%) 65 56	39, 52, 71, 84	1 (1%)
3	C	203/209 (97%)	0.01	3 (1%) 73 67	34, 46, 81, 93	0
4	D	239/241 (99%)	-0.16	1 (0%) 92 91	33, 45, 65, 82	0
All	All	807/834 (96%)	-0.04	10 (1%) 79 73	31, 46, 79, 98	1 (0%)

All (10) RSRZ outliers are listed below:

Mol	Chain	Res	Type	RSRZ
3	C	183	SER	4.1
4	D	179	ALA	3.5
2	B	4	THR	3.0
1	A	253	VAL	2.5
1	A	197	PRO	2.3
1	A	262	ALA	2.3
3	C	152	LYS	2.1
2	B	2	GLN	2.1
1	A	279	TRP	2.1
3	C	184	ASP	2.1

6.2 Non-standard residues in protein, DNA, RNA chains [i](#)

There are no non-standard protein/DNA/RNA residues in this entry.

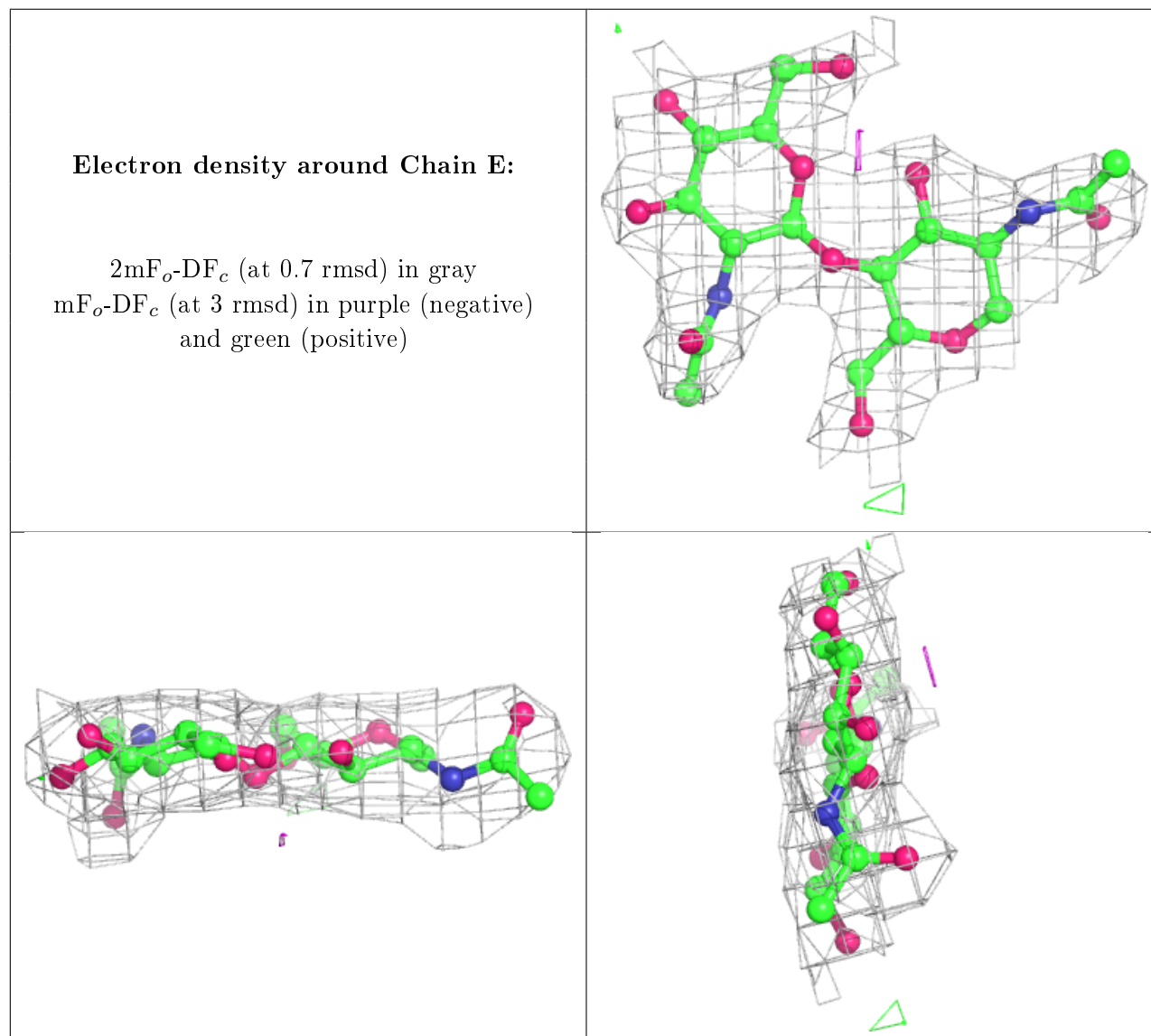
6.3 Carbohydrates [i](#)

In the following table, the Atoms column lists the number of modelled atoms in the group and the number defined in the chemical component dictionary. The B-factors column lists the minimum,

median, 95th percentile and maximum values of B factors of atoms in the group. The column labelled 'Q<0.9' lists the number of atoms with occupancy less than 0.9.

Mol	Type	Chain	Res	Atoms	RSCC	RSR	B-factors(\AA^2)	Q<0.9
5	NAG	E	2	14/15	0.86	0.35	62,64,65,66	0
5	NAG	E	1	14/15	0.92	0.28	50,52,55,60	0

The following is a graphical depiction of the model fit to experimental electron density for oligosaccharide. Each fit is shown from different orientation to approximate a three-dimensional view.



6.4 Ligands ⓘ

In the following table, the Atoms column lists the number of modelled atoms in the group and the number defined in the chemical component dictionary. The B-factors column lists the minimum,

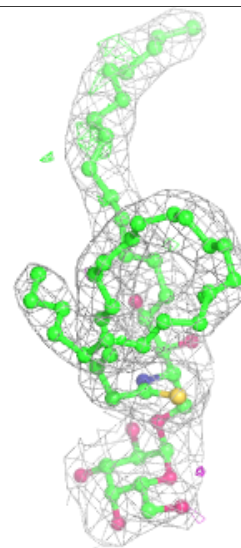
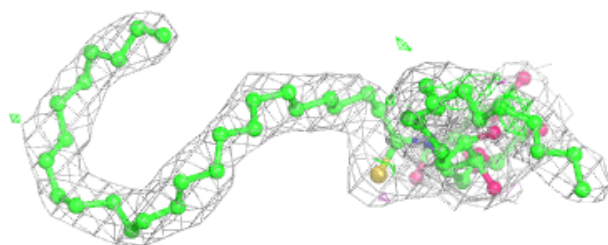
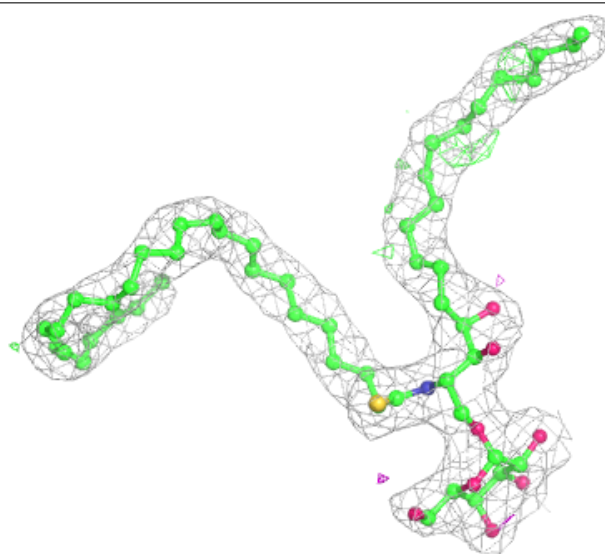
median, 95th percentile and maximum values of B factors of atoms in the group. The column labelled 'Q< 0.9' lists the number of atoms with occupancy less than 0.9.

Mol	Type	Chain	Res	Atoms	RSCC	RSR	B-factors(Å ²)	Q<0.9
6	NAG	A	301	14/15	0.90	0.20	63,66,68,68	0
6	NAG	A	302	14/15	0.92	0.18	45,47,49,50	0
7	4LX	A	305	60/60	0.95	0.21	36,38,40,41	0

The following is a graphical depiction of the model fit to experimental electron density of all instances of the Ligand of Interest. In addition, ligands with molecular weight > 250 and outliers as shown on the geometry validation Tables will also be included. Each fit is shown from different orientation to approximate a three-dimensional view.

Electron density around 4LX A 305:

2mF_o-DF_c (at 0.7 rmsd) in gray
mF_o-DF_c (at 3 rmsd) in purple (negative)
and green (positive)



6.5 Other polymers

There are no such residues in this entry.